

TRACT 38797 - Bienville Parish, Louisiana

All of the mineral rights only under land adjudicated to and acquired by the State of Louisiana in and through a proper tax sale, and subsequently alienated by the State which retained the mineral rights thereto, and which is not under valid mineral lease from the State of Louisiana on December 13, 2006, situated in Bienville Parish, Louisiana, and being more fully described as follows: Bienville Parish, Louisiana All of the land adjudicated to and acquired by the State of Louisiana in and through a proper tax sale, as pertaining to mineral rights only, which is not under valid mineral lease from the State of Louisiana, situated in Bienville Parish, Louisiana, and being more fully described as follows The South Half of the Southwest Quarter (S/2 of SW/4) of Section 30 and the Northwest Quarter of Northwest Quarter (NW/4 of NW/4) and the West Half of the Northeast Quarter of the Northwest Quarter (W/2 of NE/4 of NW/4) of Section 31, both of Township 15 North, Range 4 West, Bienville Parish, Louisiana, adjudicated to the State of Louisiana for unpaid taxes for the years 1915 and 1916 assessed under the name of Edmond Jones (also known as East D. Jones), **LESS AND EXCEPT** any portion of the West Half of the Northeast Quarter of the Northwest Quarter (W/2 of NE/4 of NW/4) lying North of the North Louisiana AND Gulf Railroad and East of Ruston St Morris Public Road, containing approximately **140 acres**, all as more particularly outlined on a plat on file in the Office of Mineral Resources, Department of Natural Resources. All bearings, distances and coordinates are based on Louisiana Coordinate System of 1927, (North or South Zone), where applicable.

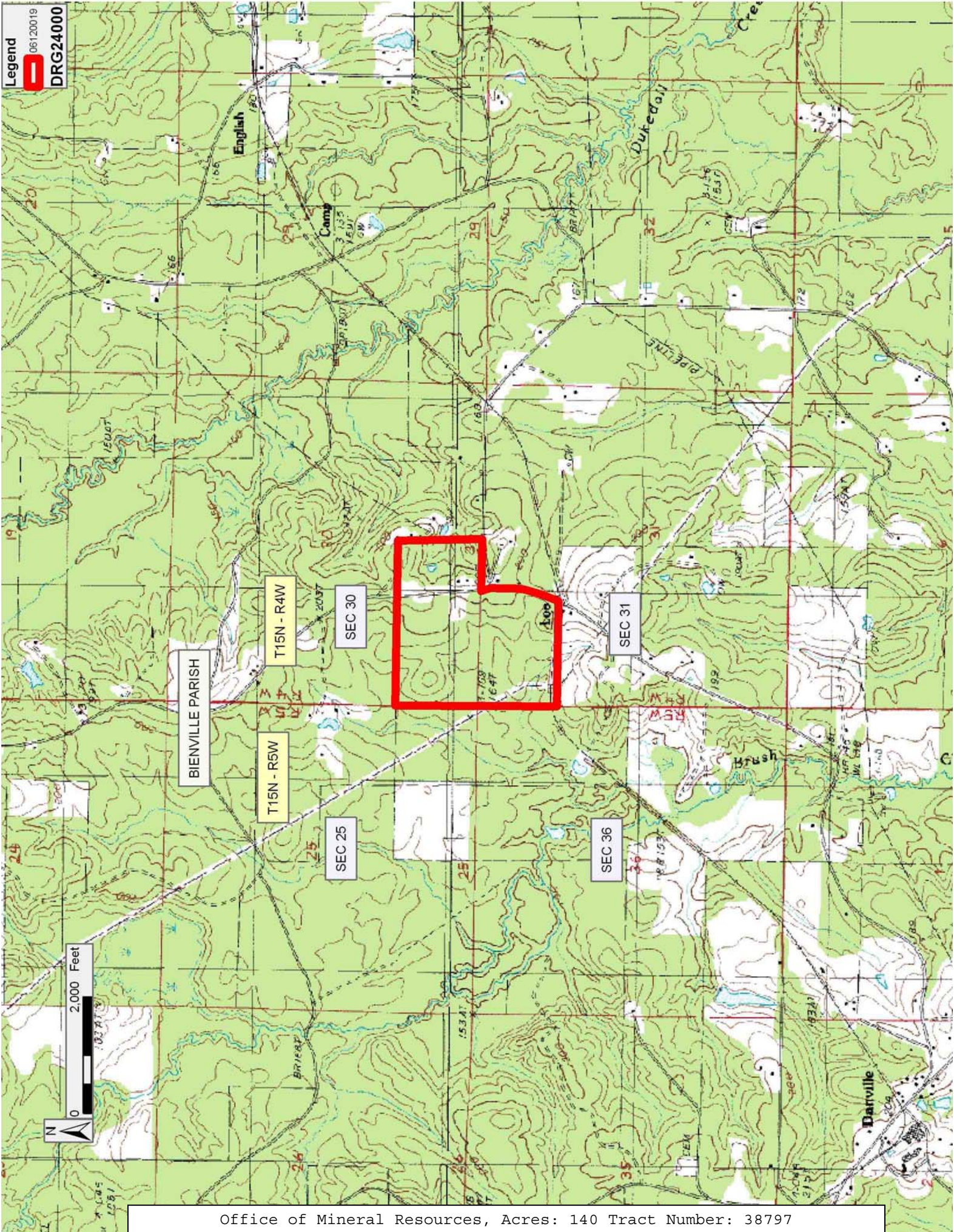
NOTE: The above description of the Tract nominated for lease has been provided and corrected, where required, exclusively by the nomination party. Any mineral lease selected from this Tract and awarded by the Louisiana State Mineral Board shall be without warranty of any kind, either express, implied, or statutory, including, but not limited to, the implied warranties of merchantability and fitness for a particular purpose. Should the mineral lease awarded by the Louisiana State Mineral Board be subsequently modified, cancelled or abrogated due to the existence of conflicting leases, operating agreements, private claims or other future obligations or conditions which may affect all or any portion of the leased Tract, it shall not relieve the Lessee of the obligation to pay any bonus due thereon to the Louisiana State Mineral Board, nor shall the Louisiana State Mineral Board be obligated to refund any consideration paid by the Lessor prior to such modification, cancellation, or abrogation, including, but not limited to, bonuses, rentals and royalties.

NOTE: The State of Louisiana owns only the mineral rights on this tract; the surface and other rights of ownership have been sold or patented out by the State. Because the surface is not owned by the State, no surface activity on this tract undertaken in conjunction with any operations under any mineral lease given on this tract will be allowed without prior approval of the surface owner and further, no such right of surface use

shall be deemed to have been given as part of any mineral lease by the State of Louisiana on this tract.

Applicant: CLASSIC PETROLEUM, INC.

Bidder	Cash Payment	Price/ Acre	Rental	Oil	Gas	Other



TRACT 38798 - Bienville Parish, Louisiana

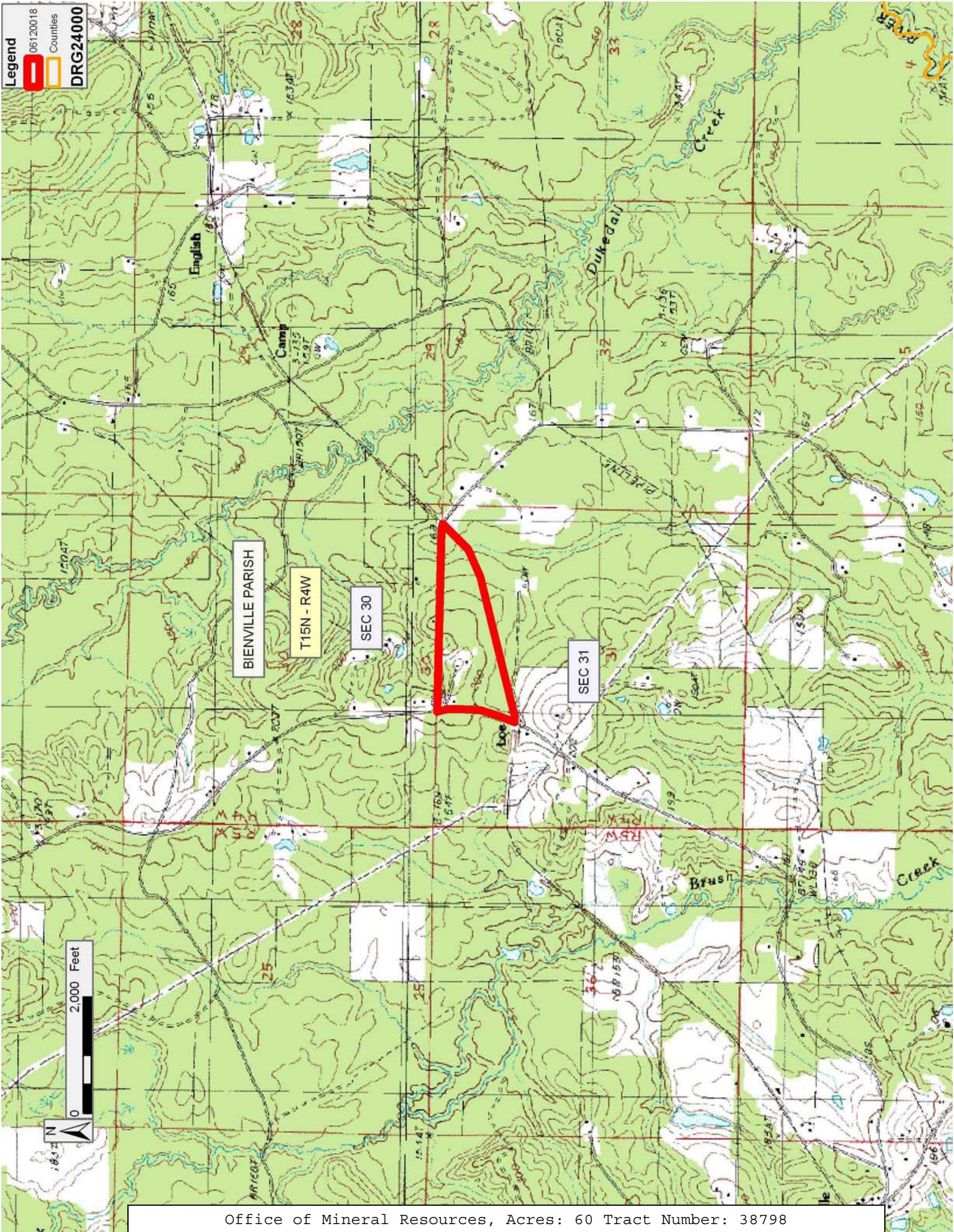
All of the mineral rights only under land adjudicated to and acquired by the State of Louisiana in and through a proper tax sale, and subsequently alienated by the State which retained the mineral rights thereto, and which is not under valid mineral lease from the State of Louisiana on December 13, 2006, situated in Bienville Parish, Louisiana, and being more fully described as follows: That part of the North Half of the Northeast Quarter (N/2 of NE/4) and Northeast Quarter of Northwest Quarter (NE/4 of NW/4) lying North of the North Louisiana AND Gulf Railroad and East of Ruston St Morris Public Road in Section 31, Township 15 North, Range 4 West, Bienville Parish, Louisiana, adjudicated to the State of Louisiana for unpaid taxes for the years 1930 and 1932 assessed under the name of Gene Williams, containing approximately **60 acres**, all as more particularly outlined on a plat on file in the Office of Mineral Resources, Department of Natural Resources. All bearings, distances and coordinates are based on Louisiana Coordinate System of 1927, (North or South Zone), where applicable.

NOTE: The above description of the Tract nominated for lease has been provided and corrected, where required, exclusively by the nomination party. Any mineral lease selected from this Tract and awarded by the Louisiana State Mineral Board shall be without warranty of any kind, either express, implied, or statutory, including, but not limited to, the implied warranties of merchantability and fitness for a particular purpose. Should the mineral lease awarded by the Louisiana State Mineral Board be subsequently modified, cancelled or abrogated due to the existence of conflicting leases, operating agreements, private claims or other future obligations or conditions which may affect all or any portion of the leased Tract, it shall not relieve the Lessee of the obligation to pay any bonus due thereon to the Louisiana State Mineral Board, nor shall the Louisiana State Mineral Board be obligated to refund any consideration paid by the Lessor prior to such modification, cancellation, or abrogation, including, but not limited to, bonuses, rentals and royalties.

NOTE: The State of Louisiana owns only the mineral rights on this tract; the surface and other rights of ownership have been sold or patented out by the State. Because the surface is not owned by the State, no surface activity on this tract undertaken in conjunction with any operations under any mineral lease given on this tract will be allowed without prior approval of the surface owner and further, no such right of surface use shall be deemed to have been given as part of any mineral lease by the State of Louisiana on this tract.

Applicant: CLASSIC PETROLEUM, INC.

Bidder	Cash Payment	Price/ Acre	Rental	Oil	Gas	Other



TRACT 38799 - Natchitoches Parish, Louisiana

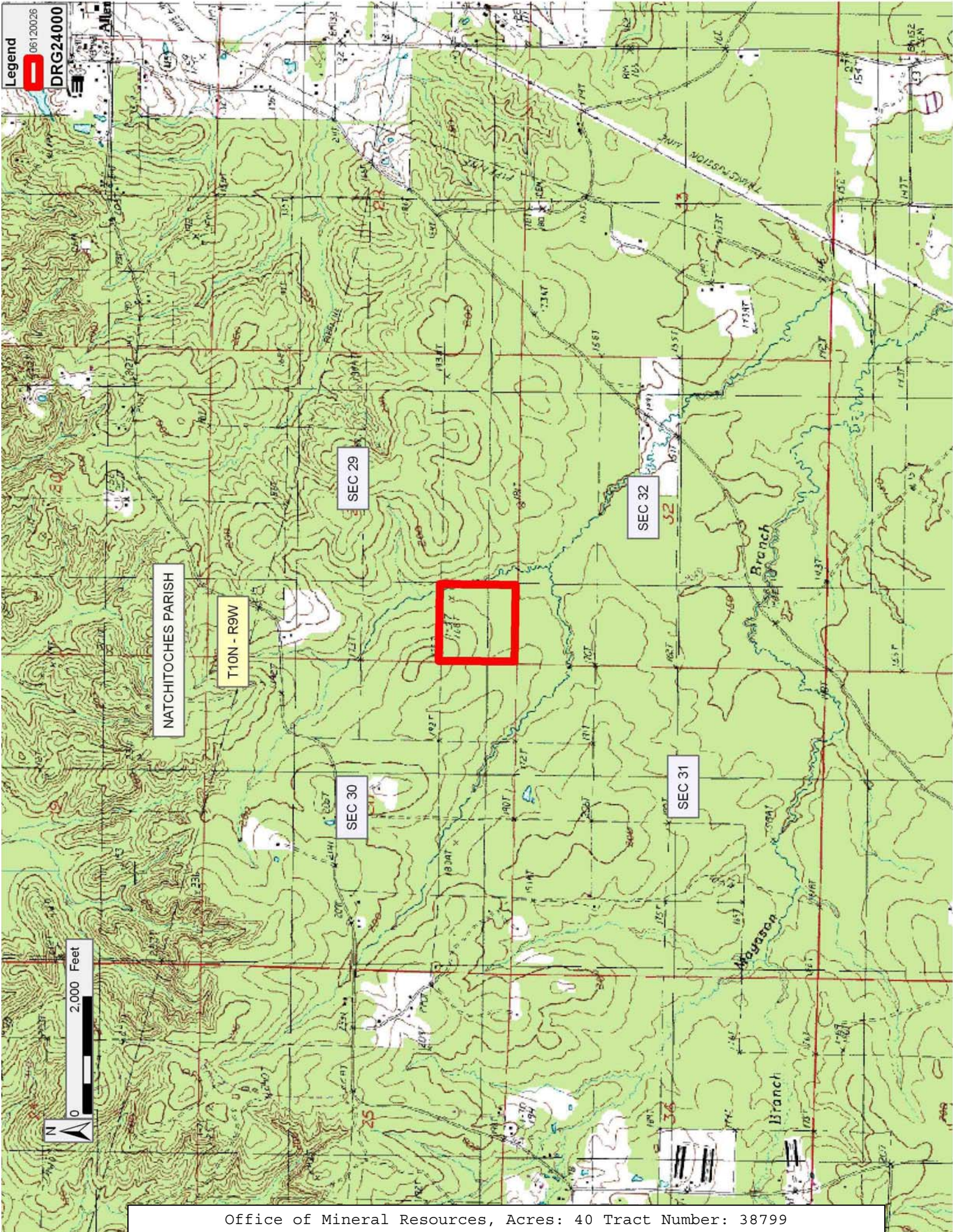
All of the mineral rights only under land adjudicated to and acquired by the State of Louisiana in and through a proper tax sale, and subsequently alienated by the State which retained the mineral rights thereto, and which is not under valid mineral lease from the State of Louisiana on December 13, 2006, situated in Natchitoches Parish, Louisiana, and being more fully described as follows: The Southwest quarter (SW/4) of the Southwest quarter (SW/4) of Section 29, Township 10 North, Range 9 West, being the same land adjudicated to the State of Louisiana in the name of Jake Burrel for unpaid taxes of the year 1931, containing approximately **40 acres**, all as more particularly outlined on a plat on file in the Office of Mineral Resources, Department of Natural Resources. All bearings, distances and coordinates are based on Louisiana Coordinate System of 1927, (North or South Zone), where applicable.

NOTE: The above description of the Tract nominated for lease has been provided and corrected, where required, exclusively by the nomination party. Any mineral lease selected from this Tract and awarded by the Louisiana State Mineral Board shall be without warranty of any kind, either express, implied, or statutory, including, but not limited to, the implied warranties of merchantability and fitness for a particular purpose. Should the mineral lease awarded by the Louisiana State Mineral Board be subsequently modified, cancelled or abrogated due to the existence of conflicting leases, operating agreements, private claims or other future obligations or conditions which may affect all or any portion of the leased Tract, it shall not relieve the Lessee of the obligation to pay any bonus due thereon to the Louisiana State Mineral Board, nor shall the Louisiana State Mineral Board be obligated to refund any consideration paid by the Lessor prior to such modification, cancellation, or abrogation, including, but not limited to, bonuses, rentals and royalties.

NOTE: The State of Louisiana owns only the mineral rights on this tract; the surface and other rights of ownership have been sold or patented out by the State. Because the surface is not owned by the State, no surface activity on this tract undertaken in conjunction with any operations under any mineral lease given on this tract will be allowed without prior approval of the surface owner and further, no such right of surface use shall be deemed to have been given as part of any mineral lease by the State of Louisiana on this tract.

Applicant: LEE ABER

Bidder	Cash Payment	Price/ Acre	Rental	Oil	Gas	Other



TRACT 38800 - Natchitoches Parish, Louisiana

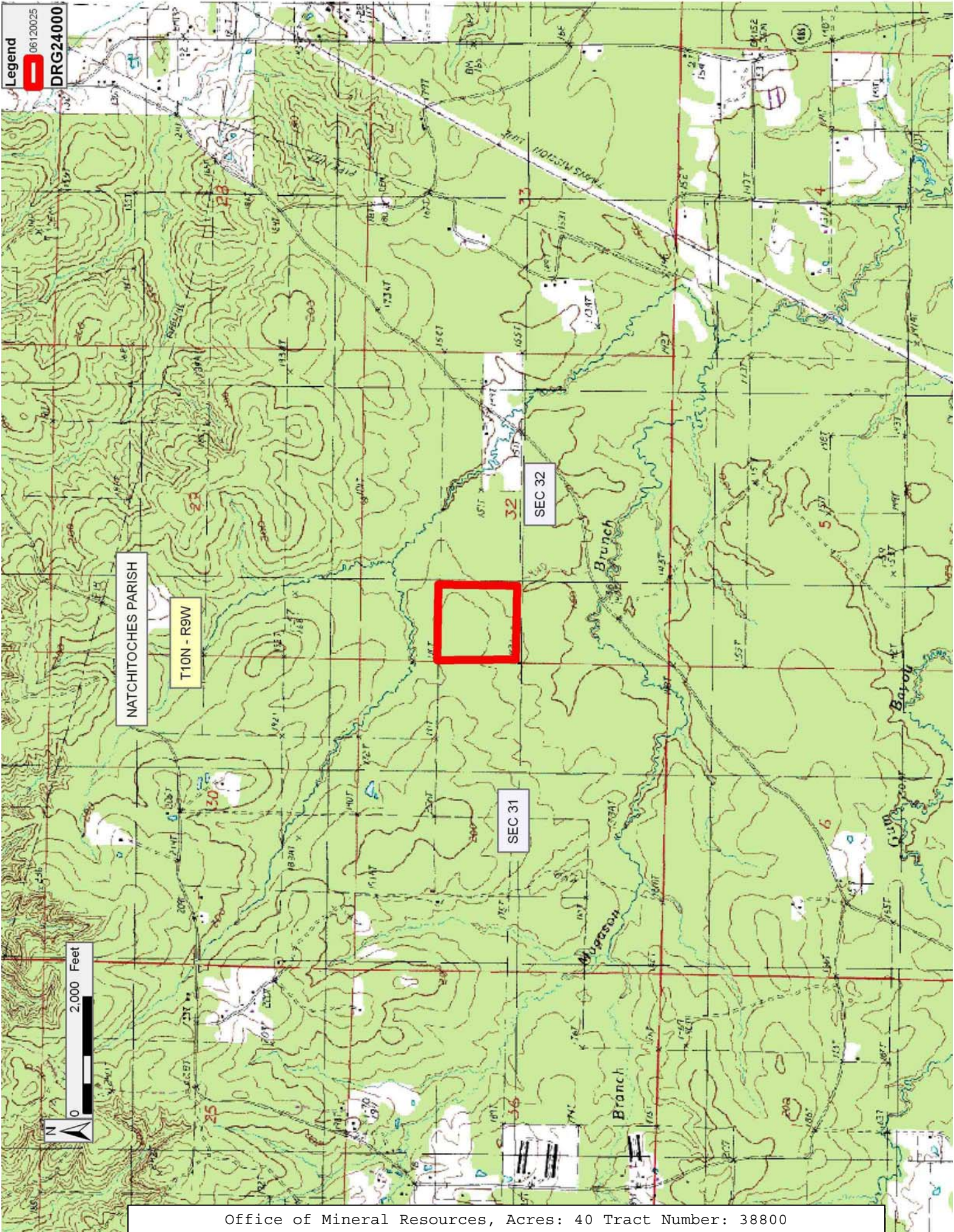
All of the mineral rights only under land adjudicated to and acquired by the State of Louisiana in and through a proper tax sale, and subsequently alienated by the State which retained the mineral rights thereto, and which is not under valid mineral lease from the State of Louisiana on December 13, 2006, situated in Natchitoches Parish, Louisiana, and being more fully described as follows: The Southwest quarter (SW/4) of the Northwest quarter (NW/4) of Section 32, Township 10 North, Range 9 West, being the same land adjudicated to the State of Louisiana in the name of Est. Horace Brown for unpaid taxes of the year 1931, containing approximately **40 acres**, all as more particularly outlined on a plat on file in the Office of Mineral Resources, Department of Natural Resources. All bearings, distances and coordinates are based on Louisiana Coordinate System of 1927, (North or South Zone), where applicable.

NOTE: The above description of the Tract nominated for lease has been provided and corrected, where required, exclusively by the nomination party. Any mineral lease selected from this Tract and awarded by the Louisiana State Mineral Board shall be without warranty of any kind, either express, implied, or statutory, including, but not limited to, the implied warranties of merchantability and fitness for a particular purpose. Should the mineral lease awarded by the Louisiana State Mineral Board be subsequently modified, cancelled or abrogated due to the existence of conflicting leases, operating agreements, private claims or other future obligations or conditions which may affect all or any portion of the leased Tract, it shall not relieve the Lessee of the obligation to pay any bonus due thereon to the Louisiana State Mineral Board, nor shall the Louisiana State Mineral Board be obligated to refund any consideration paid by the Lessor prior to such modification, cancellation, or abrogation, including, but not limited to, bonuses, rentals and royalties.

NOTE: The State of Louisiana owns only the mineral rights on this tract; the surface and other rights of ownership have been sold or patented out by the State. Because the surface is not owned by the State, no surface activity on this tract undertaken in conjunction with any operations under any mineral lease given on this tract will be allowed without prior approval of the surface owner and further, no such right of surface use shall be deemed to have been given as part of any mineral lease by the State of Louisiana on this tract.

Applicant: LEE ABER

Bidder	Cash Payment	Price/ Acre	Rental	Oil	Gas	Other



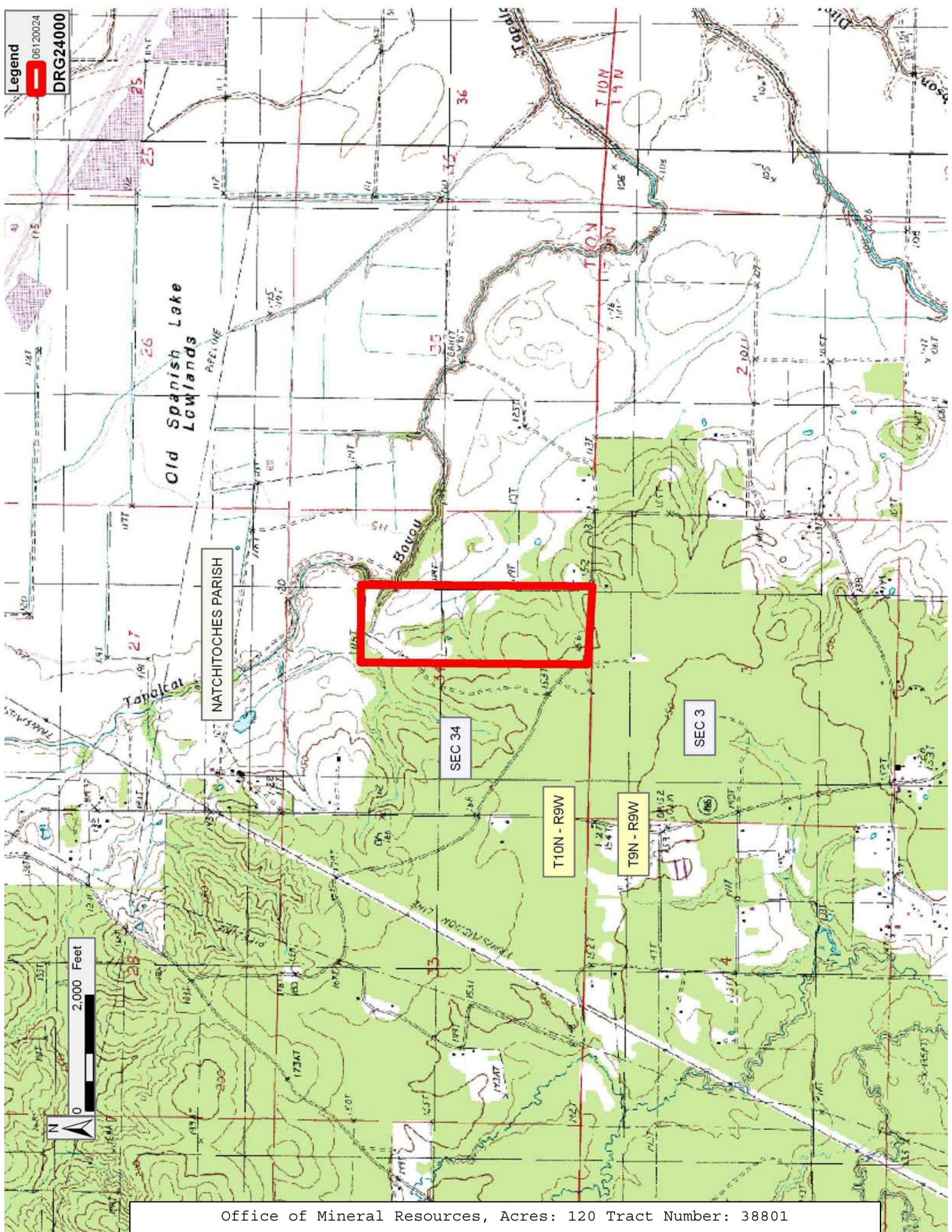
TRACT 38801 - Natchitoches Parish, Louisiana

All of the mineral rights only under land adjudicated to and acquired by the State of Louisiana in and through a proper tax sale, and subsequently alienated by the State which retained the mineral rights thereto, and which is not under valid mineral lease from the State of Louisiana on December 13, 2006, situated in Natchitoches Parish, Louisiana, and being more fully described as follows: The Southwest quarter (SW/4) of the Northeast quarter (NE/4) and the West half (W/2) of the Southeast quarter (SE/4) of Section 34, Township 10 North, Range 9 West, being the same land adjudicated to the State of Louisiana in the name of Elija Brooks for unpaid taxes of the year 1931, containing approximately **120 acres**, all as more particularly outlined on a plat on file in the Office of Mineral Resources, Department of Natural Resources. All bearings, distances and coordinates are based on Louisiana Coordinate System of 1927, (North or South Zone), where applicable.

NOTE: The above description of the Tract nominated for lease has been provided and corrected, where required, exclusively by the nomination party. Any mineral lease selected from this Tract and awarded by the Louisiana State Mineral Board shall be without warranty of any kind, either express, implied, or statutory, including, but not limited to, the implied warranties of merchantability and fitness for a particular purpose. Should the mineral lease awarded by the Louisiana State Mineral Board be subsequently modified, cancelled or abrogated due to the existence of conflicting leases, operating agreements, private claims or other future obligations or conditions which may affect all or any portion of the leased Tract, it shall not relieve the Lessee of the obligation to pay any bonus due thereon to the Louisiana State Mineral Board, nor shall the Louisiana State Mineral Board be obligated to refund any consideration paid by the Lessor prior to such modification, cancellation, or abrogation, including, but not limited to, bonuses, rentals and royalties.

Applicant: LEE ABER

Bidder	Cash Payment	Price/ Acre	Rental	Oil	Gas	Other



TRACT 38802 - Natchitoches Parish, Louisiana

All of the mineral rights only under land adjudicated to and acquired by the State of Louisiana in and through a proper tax sale, and subsequently alienated by the State which retained the mineral rights thereto, and which is not under valid mineral lease from the State of Louisiana on December 13, 2006, situated in Natchitoches Parish, Louisiana, and being more fully described as follows: The Northeast quarter (NE/4) of the Southeast quarter (SE/4) of Section 7, Township 9 North, Range 9 West, being the same land adjudicated to the State of Louisiana in the name of Nancy Byron for unpaid taxes of the year 1931, containing approximately **40 acres**, all as more particularly outlined on a plat on file in the Office of Mineral Resources, Department of Natural Resources. All bearings, distances and coordinates are based on Louisiana Coordinate System of 1927, (North or South Zone), where applicable.

NOTE: The above description of the Tract nominated for lease has been provided and corrected, where required, exclusively by the nomination party. Any mineral lease selected from this Tract and awarded by the Louisiana State Mineral Board shall be without warranty of any kind, either express, implied, or statutory, including, but not limited to, the implied warranties of merchantability and fitness for a particular purpose. Should the mineral lease awarded by the Louisiana State Mineral Board be subsequently modified, cancelled or abrogated due to the existence of conflicting leases, operating agreements, private claims or other future obligations or conditions which may affect all or any portion of the leased Tract, it shall not relieve the Lessee of the obligation to pay any bonus due thereon to the Louisiana State Mineral Board, nor shall the Louisiana State Mineral Board be obligated to refund any consideration paid by the Lessor prior to such modification, cancellation, or abrogation, including, but not limited to, bonuses, rentals and royalties.

NOTE: The State of Louisiana owns only the mineral rights on this tract; the surface and other rights of ownership have been sold or patented out by the State. Because the surface is not owned by the State, no surface activity on this tract undertaken in conjunction with any operations under any mineral lease given on this tract will be allowed without prior approval of the surface owner and further, no such right of surface use shall be deemed to have been given as part of any mineral lease by the State of Louisiana on this tract.

Applicant: LEE ABER

Bidder	Cash Payment	Price/ Acre	Rental	Oil	Gas	Other

