

TRACT 38773 - Portion of Block 32, Main Pass Area, Revised, Plaquemines Parish, Louisiana

All of the lands now or formerly constituting the beds and bottoms of all water bodies of every nature and description the title of which vests in the State of Louisiana, together with all islands arising therein and other lands formed by accretion or by reliction, where allowed by law, excepting tax adjudicated lands, and not presently under mineral lease and cross hatched on December 13, 2006, situated in Plaquemines Parish, Louisiana, and more particularly described as follows: Beginning at a point having Coordinates of X = 2,605,850.00 and Y = 307,580.01; thence East 2,170.00 feet to a point being the Northwest corner of State Lease No. 18473 having Coordinates of X = 2,608,020.00 and Y = 307,580.00; thence South 4,935.01 feet along the West boundary line of said State Lease No. 18473 to a point having Coordinates of X = 2,608,020.00 and Y = 302,645.00; thence along the West boundary line of said State Lease No. 18473 South 3 degrees 43 minutes 3 seconds East 4,935.38 feet to a point being the Southwest corner of said State Lease No. 18473 having Coordinates of X = 2,608,340.00 and Y = 297,720.00; thence East 2,495.00 feet along the South boundary line of said State Lease No. 18473 to a point being the Southeast corner of said State Lease No. 18473 having Coordinates of X = 2,610,835.00 and Y = 297,720.00; thence North 2 degrees 12 minutes 2 seconds West 5,599.12 feet along the East boundary of said State Lease No. 18473 to a point having Coordinates of X = 2,610,620.00 and Y = 303,315.00; thence East 1,155.00 feet along the East boundary line of said State Lease No. 18473 to a point having Coordinates of X = 2,611,775.00 and Y = 303,315.00; thence North 4,265.00 feet along the East boundary line of said State Lease No. 18473 to a point being the Northeast corner of said State Lease No. 18473 having Coordinates of X = 2,611,775.00 and Y = 307,580.00; thence East 8,825.00 feet to a point having Coordinates of X = 2,620,600.00 and Y = 307,579.99; thence South 1,053.56 feet to a point being the Northeast corner of State Lease No. 14441 having Coordinates of X = 2,620,599.99 and Y = 306,526.42; thence West 2,170.57 feet to a point being the Northwest corner of said State Lease No. 14441 having Coordinates of X = 2,618,429.43 and Y = 306,526.42; thence South 946.42 feet along the West boundary line of said State Lease No. 14441 to a point being the Northeast corner of State Lease No. 18517 having Coordinates of X = 2,618,429.43 and Y = 305,580.00; thence West 3,075.43 feet to a point being the Northwest corner of said State Lease No. 18517 having Coordinates of X = 2,615,354.00 and Y = 305,580.00; thence South 4,000.00 feet along the West boundary of said State Lease No. 18517 to a point being the Southwest corner of said State Lease No. 18517 having Coordinates of X = 2,615,354.00 and Y = 301,580.00; thence East 3,075.43 feet to a point being the Southeast corner of said State Lease No. 18517 having Coordinates of X = 2,618,429.43 and Y = 301,580.00; thence North 636.36 feet along the East boundary line of said State Lease No. 18517 to a point being the Southwest corner of State Lease No. 14441 having Coordinates of X = 2,618,429.43 and Y = 302,216.36; thence East 2,170.56 feet along the South boundary line of said State Lease No. 14441 to a point being the Southeast corner of said State Lease No. 14441 having

Coordinates of X = 2,620,599.99 and Y = 302,216.35; thence South 2,131.47 feet to a point being the Northeast corner of State Lease No. 17293 having Coordinates of X = 2,620,600.00 and Y = 300,084.88; thence South 63 degrees 15 minutes 14 seconds West 4,210.49 feet along the North boundary of said State Lease No. 17293 to a point being the Northwest corner of said State Lease No. 17293 having Coordinates of X = 2,616,840.00 and Y = 298,189.99; thence South 909.99 feet along the West boundary line of said State Lease No. 17293 to a point being the Southwest corner of said State Lease No. 17293 and a point on the North boundary line of State Lease No. 1958 having Coordinates of X = 2,616,840.00 and Y = 297,280.00; thence West 10,990.00 feet along the North boundary line of said State Lease No. 1958 to a point being the Northwest corner of said State Lease No. 1958 having Coordinates of X = 2,605,850.01 and Y = 297,280.00; thence North 10,300.00 feet to the Point of Beginning, containing approximately **2,132.88 acres**, all as more particularly outlined on a plat on file in the Office of Mineral Resources, Department of Natural Resources. All bearings, distances and coordinates are based on Louisiana Coordinate System of 1927, (North or South Zone), where applicable.

NOTE: The above description of the Tract nominated for lease has been provided and corrected, where required, exclusively by the nomination party. Any mineral lease selected from this Tract and awarded by the Louisiana State Mineral Board shall be without warranty of any kind, either express, implied, or statutory, including, but not limited to, the implied warranties of merchantability and fitness for a particular purpose. Should the mineral lease awarded by the Louisiana State Mineral Board be subsequently modified, cancelled or abrogated due to the existence of conflicting leases, operating agreements, private claims or other future obligations or conditions which may affect all or any portion of the leased Tract, it shall not relieve the Lessee of the obligation to pay any bonus due thereon to the Louisiana State Mineral Board, nor shall the Louisiana State Mineral Board be obligated to refund any consideration paid by the Lessor prior to such modification, cancellation, or abrogation, including, but not limited to, bonuses, rentals and royalties.

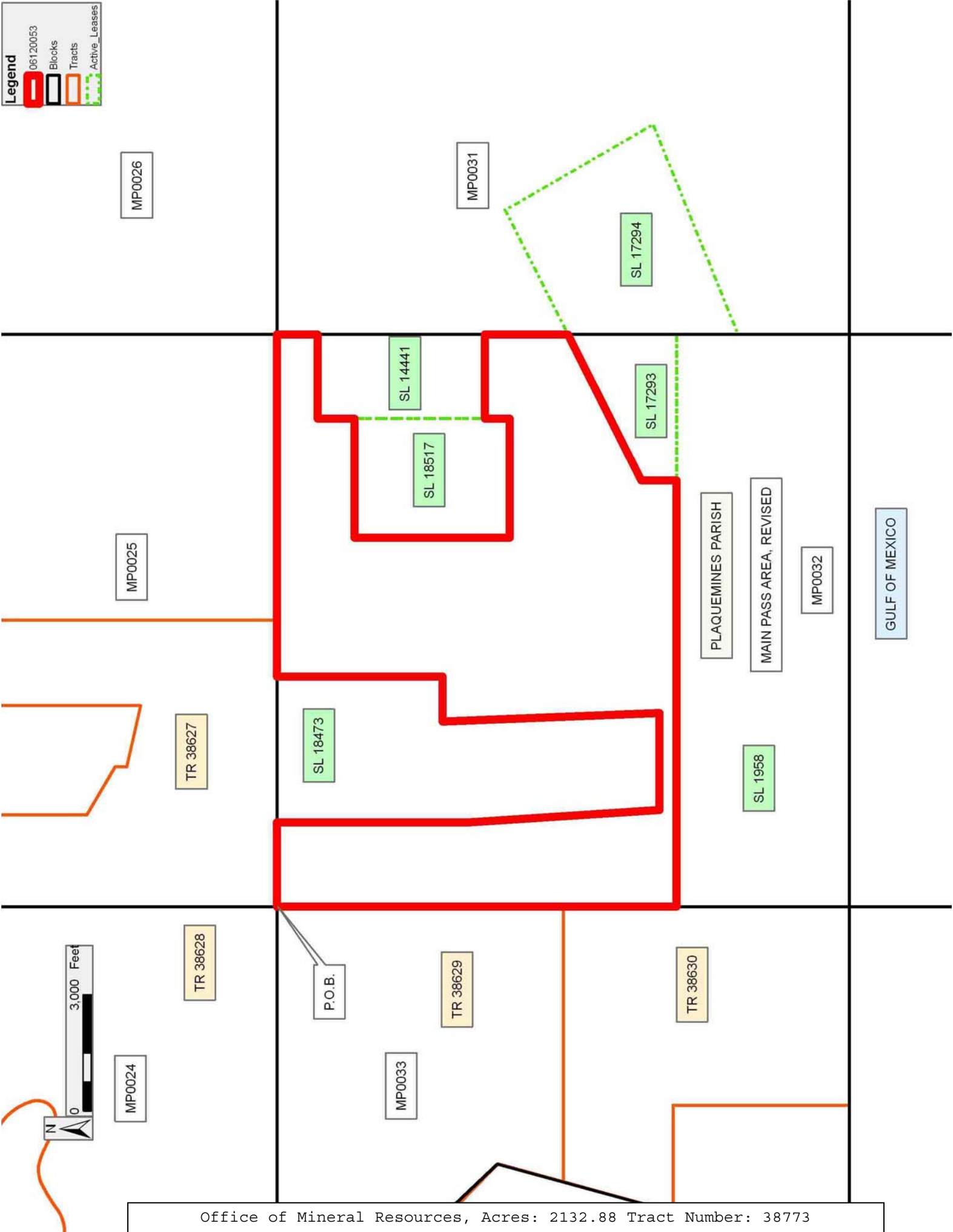
NOTE: The State of Louisiana does hereby reserve, and this lease shall be subject to, the imprescriptible right of surface use in the nature of a servitude in favor of the Department of Natural Resources, including its Offices and Commissions, for the sole purpose of implementing, constructing, servicing and maintaining approved coastal zone management and/or restoration projects. Utilization of any and all rights derived under this lease by the mineral lessee, its agents, successors or assigns, shall not interfere with nor hinder the reasonable surface use by the Department of Natural Resources, its Offices or Commissions, as herein above reserved.

Applicant: CRAIG S. CHARBONNET, INC.

Bidder	Cash Payment	Price/ Acre	Rental	Oil	Gas	Other

Legend

- 06120053
- Blocks
- Tracts
- Active_Leases



TRACT 38774 - Portion of Block 33, Main Pass Area, Revised, Plaquemines Parish, Louisiana

All of the lands now or formerly constituting the beds and bottoms of all water bodies of every nature and description the title of which vests in the State of Louisiana, together with all islands arising therein and other lands formed by accretion or by reliction, where allowed by law, excepting tax adjudicated lands, and not presently under mineral lease and cross hatched on December 13, 2006, situated in Plaquemines Parish, Louisiana, and more particularly described as follows: Beginning at a point having Coordinates of X = 2,581,693.00 and Y = 306,340.47; thence East approximately 12,958 feet to a point said to be on the West boundary line of Tract No. 38629; thence Southeasterly approximately 6,373 feet along the West boundary line of said Tract No. 38629 to a point; thence Southwesterly approximately 1,742 feet to a point said to be the Southwest corner of Tract No. 38629 having a coordinate of Y = 300,205.00; thence Southwesterly approximately 684 feet along the West boundary line of Tract No. 38630 to a point having a coordinate of Y = 299,545.17; thence West approximately 16,880 feet to a point having Coordinates of X = 2,581,693.00 and Y = 299,545.17; thence North 6,795.30 feet to the Point of Beginning, containing approximately **2,482 acres**, all as more particularly outlined on a plat on file in the Office of Mineral Resources, Department of Natural Resources. All bearings, distances and coordinates are based on Louisiana Coordinate System of 1927, (North or South Zone), where applicable.

NOTE: The above description of the Tract nominated for lease has been provided and corrected, where required, exclusively by the nomination party. Any mineral lease selected from this Tract and awarded by the Louisiana State Mineral Board shall be without warranty of any kind, either express, implied, or statutory, including, but not limited to, the implied warranties of merchantability and fitness for a particular purpose. Should the mineral lease awarded by the Louisiana State Mineral Board be subsequently modified, cancelled or abrogated due to the existence of conflicting leases, operating agreements, private claims or other future obligations or conditions which may affect all or any portion of the leased Tract, it shall not relieve the Lessee of the obligation to pay any bonus due thereon to the Louisiana State Mineral Board, nor shall the Louisiana State Mineral Board be obligated to refund any consideration paid by the Lessor prior to such modification, cancellation, or abrogation, including, but not limited to, bonuses, rentals and royalties.

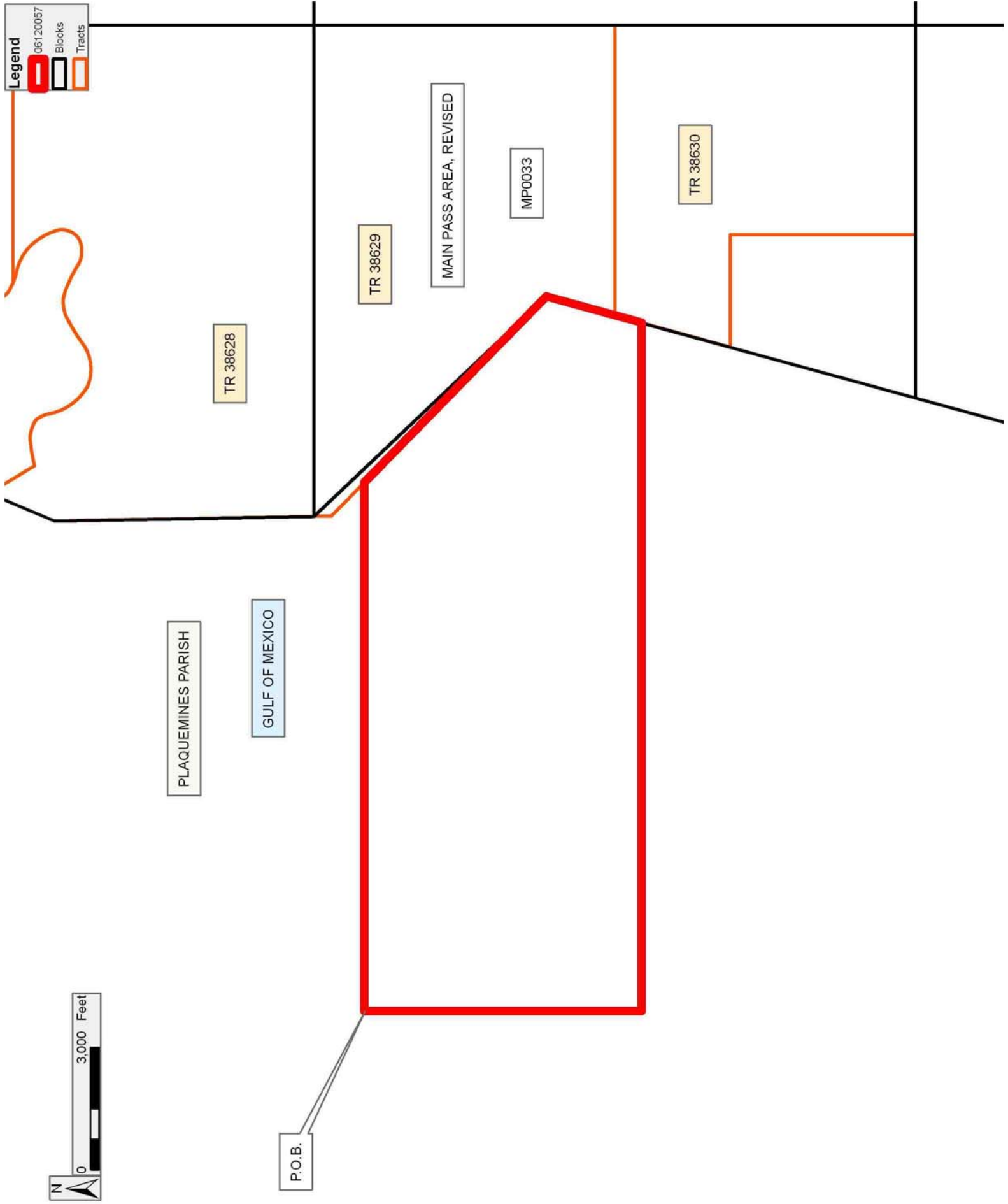
NOTE: The State of Louisiana does hereby reserve, and this lease shall be subject to, the imprescriptible right of surface use in the nature of a servitude in favor of the Department of Natural Resources, including its Offices and Commissions, for the sole purpose of implementing, constructing, servicing and maintaining approved coastal zone management and/or restoration projects. Utilization of any and all rights derived under this lease by the mineral lessee, its agents, successors or assigns, shall not interfere with nor hinder the reasonable surface use by the

Department of Natural Resources, its Offices or Commissions, as herein above reserved.

NOTE: The Department of Wildlife and Fisheries has designated certain areas in the coastal waters of the State of Louisiana as Oyster Seed Bed Areas. The exact location of those Seed Bed Areas must be obtained from the Department of Wildlife and Fisheries and any work done under a mineral lease from the State of Louisiana may necessarily be conducted in conformity with the rules and regulations promulgated by the said Department of Wildlife and Fisheries for Oyster Seed Bed Areas.

Applicant: CRAIG S. CHARBONNET, INC.

Bidder	Cash Payment	Price/ Acre	Rental	Oil	Gas	Other



TRACT 38775 - Plaquemines Parish, Louisiana

All of the lands now or formerly constituting the beds and bottoms of all water bodies of every nature and description the title of which vests in the State of Louisiana, together with all islands arising therein and other lands formed by accretion or by reliction, where allowed by law, excepting tax adjudicated lands, and not presently under mineral lease and cross hatched on December 13, 2006, situated in Plaquemines Parish, Louisiana, and more particularly described as follows: Beginning at a point having Coordinates of X = 2,572,693.00 and Y = 302,473.46; thence East 9,000.00 feet to a point having Coordinates of X = 2,581,693.00 and Y = 302,473.46; thence South approximately 10,099 feet, or an extension thereof, to a point said to be on the North boundary line of State Lease No. 195 having a coordinate of X = 2,581,693.00; thence Westerly along the North boundary line of said State Lease No. 195 approximately 8,770 feet to a point said to be the Northwest corner of said State Lease No. 195; thence Westerly approximately 230 feet to a point having Coordinates of X = 2,572,693.00 and Y = 292,374.75; thence North 10,098.70 feet to the Point of Beginning, **LESS AND EXCEPT** any portion of the above described tract which may lie within State Lease No. 195, containing approximately **2,080 acres**, all as more particularly outlined on a plat on file in the Office of Mineral Resources, Department of Natural Resources. All bearings, distances and coordinates are based on Louisiana Coordinate System of 1927, (North or South Zone), where applicable.

NOTE: The above description of the Tract nominated for lease has been provided and corrected, where required, exclusively by the nomination party. Any mineral lease selected from this Tract and awarded by the Louisiana State Mineral Board shall be without warranty of any kind, either express, implied, or statutory, including, but not limited to, the implied warranties of merchantability and fitness for a particular purpose. Should the mineral lease awarded by the Louisiana State Mineral Board be subsequently modified, cancelled or abrogated due to the existence of conflicting leases, operating agreements, private claims or other future obligations or conditions which may affect all or any portion of the leased Tract, it shall not relieve the Lessee of the obligation to pay any bonus due thereon to the Louisiana State Mineral Board, nor shall the Louisiana State Mineral Board be obligated to refund any consideration paid by the Lessor prior to such modification, cancellation, or abrogation, including, but not limited to, bonuses, rentals and royalties.

NOTE: The State of Louisiana does hereby reserve, and this lease shall be subject to, the imprescriptible right of surface use in the nature of a servitude in favor of the Department of Natural Resources, including its Offices and Commissions, for the sole purpose of implementing, constructing, servicing and maintaining approved coastal zone management and/or restoration projects. Utilization of any and all rights derived under this lease by the mineral lessee, its agents, successors or assigns, shall not interfere with nor hinder the reasonable surface use by the

Department of Natural Resources, its Offices or Commissions, as herein above reserved.

NOTE: The Department of Wildlife and Fisheries has designated certain areas in the coastal waters of the State of Louisiana as Oyster Seed Bed Areas. The exact location of those Seed Bed Areas must be obtained from the Department of Wildlife and Fisheries and any work done under a mineral lease from the State of Louisiana may necessarily be conducted in conformity with the rules and regulations promulgated by the said Department of Wildlife and Fisheries for Oyster Seed Bed Areas.

Applicant: CRAIG S. CHARBONNET, INC.

Bidder	Cash Payment	Price/ Acre	Rental	Oil	Gas	Other



PLAQUEMINES PARISH

GULF OF MEXICO

P.O.B.



SL 195



TRACT 38776 - Plaquemines Parish, Louisiana

All of the lands now or formerly constituting the beds and bottoms of all water bodies of every nature and description the title of which vests in the State of Louisiana, together with all islands arising therein and other lands formed by accretion or by reliction, where allowed by law, excepting tax adjudicated lands, and not presently under mineral lease and cross hatched on December 13, 2006, situated in Plaquemines Parish, Louisiana, and more particularly described as follows: Beginning at a point having Coordinates of X = 2,581,693.00 and Y = 299,545.17; thence East 14,928.50 feet to a point having Coordinates of X = 2,596,621.50 and Y = 299,545.17; thence South 5,440.17 feet to a point being the Northeast corner of State Lease No. 18665 having Coordinates of X = 2,596,621.50 and Y = 294,105.00; thence West 1,656.50 feet along the North boundary line of said State Lease No. 18665 to a point being the Northwest corner of said State Lease No. 18665 having Coordinates of X = 2,594,965.00 and Y = 294,105.00; thence South approximately 1,888 feet to a point said to be on the North boundary line of State Lease No. 195 having a coordinate of X = 2,594,965.00; thence Westerly approximately 13,273 feet along the North boundary line of said State Lease No. 195 to a point with a coordinate of X = 2,581,693.00; thence North approximately 7,170 feet to the Point of Beginning, **LESS AND EXCEPT** any portion of the above described tract which may lie within State Lease No. 195, containing approximately **2,416 acres**, all as more particularly outlined on a plat on file in the Office of Mineral Resources, Department of Natural Resources. All bearings, distances and coordinates are based on Louisiana Coordinate System of 1927, (North or South Zone), where applicable.

NOTE: The above description of the Tract nominated for lease has been provided and corrected, where required, exclusively by the nomination party. Any mineral lease selected from this Tract and awarded by the Louisiana State Mineral Board shall be without warranty of any kind, either express, implied, or statutory, including, but not limited to, the implied warranties of merchantability and fitness for a particular purpose. Should the mineral lease awarded by the Louisiana State Mineral Board be subsequently modified, cancelled or abrogated due to the existence of conflicting leases, operating agreements, private claims or other future obligations or conditions which may affect all or any portion of the leased Tract, it shall not relieve the Lessee of the obligation to pay any bonus due thereon to the Louisiana State Mineral Board, nor shall the Louisiana State Mineral Board be obligated to refund any consideration paid by the Lessor prior to such modification, cancellation, or abrogation, including, but not limited to, bonuses, rentals and royalties.

NOTE: The State of Louisiana does hereby reserve, and this lease shall be subject to, the imprescriptible right of surface use in the nature of a servitude in favor of the Department of Natural Resources, including its Offices and Commissions, for the sole purpose of implementing, constructing, servicing and maintaining approved coastal zone management and/or restoration projects. Utilization of any and all rights derived

under this lease by the mineral lessee, its agents, successors or assigns, shall not interfere with nor hinder the reasonable surface use by the Department of Natural Resources, its Offices or Commissions, as herein above reserved.

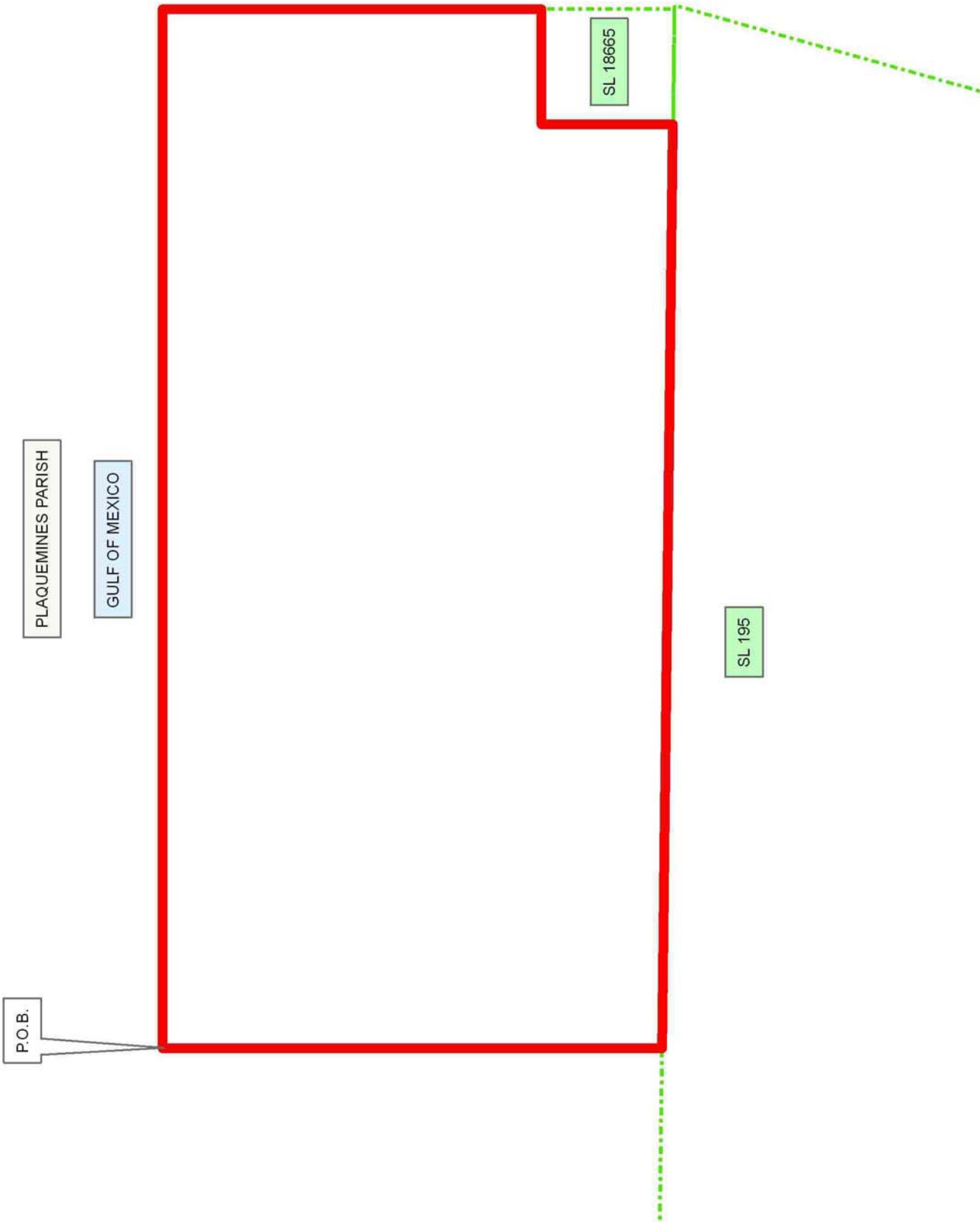
NOTE: The Department of Wildlife and Fisheries has designated certain areas in the coastal waters of the State of Louisiana as Oyster Seed Bed Areas. The exact location of those Seed Bed Areas must be obtained from the Department of Wildlife and Fisheries and any work done under a mineral lease from the State of Louisiana may necessarily be conducted in conformity with the rules and regulations promulgated by the said Department of Wildlife and Fisheries for Oyster Seed Bed Areas.

Applicant: CRAIG S. CHARBONNET, INC.

Bidder	Cash Payment	Price/ Acre	Rental	Oil	Gas	Other

Legend

Active_Leases
06120055



TRACT 38777 - Portion of Blocks 33, and 34, Main Pass Area, Revised, Plaquemines Parish, Louisiana

All of the lands now or formerly constituting the beds and bottoms of all water bodies of every nature and description the title of which vests in the State of Louisiana, together with all islands arising therein and other lands formed by accretion or by reliction, where allowed by law, excepting tax adjudicated lands, and not presently under mineral lease and cross hatched on December 13, 2006, situated in Plaquemines Parish, Louisiana, and more particularly described as follows: Beginning at a point having Coordinates of X = 2,596,621.50 and Y = 299,545.17; thence East approximately 1,952 feet to a point on the West boundary line of Tract No. 38630 having a coordinate of Y = 299,545.17; thence Southwesterly approximately 2,253 feet to a point having a coordinate of Y = 297,372.00; thence East approximately 2,744 feet to a point having Coordinates of X = 2,600,721.00 and Y = 297,372.00; thence South 4,542.00 feet to a point having Coordinates of X = 2,600,721.00 and Y = 292,830.00; thence East 5,129.00 feet to a point being the Southwest corner of State Lease No. 1958 and the Northwest corner of State Lease No. 1961 having Coordinates of X = 2,605,850.00 and Y = 292,830.00; thence South 7,384.21 feet along the West boundary line of said State Lease No. 1961 to a point being the Southwest corner of said State Lease No. 1961 having Coordinates of X = 2,605,850.00 and Y = 285,445.79; thence South 88.79 feet to a point having Coordinates of X = 2,605,850.00 and Y = 285,357.00; thence West 9,744.00 feet to a point being on the North boundary line of State Lease No. 1349 having Coordinates of X = 2,596,106.00 and Y = 285,357.00; thence along the North boundary line of said State Lease No. 1349 South 89 degrees 55 minutes 16 seconds West approximately 1,358 feet to a point said to be on the East boundary line of State Lease No. 195; thence Northerly approximately 7,108 feet along the East boundary of said State Lease No. 195 to a point said to be the Northeast corner of State Lease No. 195; thence Westerly approximately 53 feet along the North boundary line of said State Lease No. 195 to the Southeast corner of State Lease No. 18665 having a coordinate of X = 2,596,621.50; thence North approximately 1,908 feet along the East boundary line of said State Lease No. 18665 to the Northeast corner of said State lease No. 18665 having Coordinates of X = 2,596,621.50 and Y = 294,105.00; thence North 5,440.17 feet to the Point of Beginning, **LESS AND EXCEPT** any portion of the above described tract that may lie within State Lease No. 195, containing approximately **2,236 acres**, all as more particularly outlined on a plat on file in the Office of Mineral Resources, Department of Natural Resources. All bearings, distances and coordinates are based on Louisiana Coordinate System of 1927, (North or South Zone), where applicable.

NOTE: The above description of the Tract nominated for lease has been provided and corrected, where required, exclusively by the nomination party. Any mineral lease selected from this Tract and awarded by the Louisiana State Mineral Board shall be without warranty of any kind, either express, implied, or statutory, including, but not limited to, the implied warranties of merchantability and fitness for a particular

purpose. Should the mineral lease awarded by the Louisiana State Mineral Board be subsequently modified, cancelled or abrogated due to the existence of conflicting leases, operating agreements, private claims or other future obligations or conditions which may affect all or any portion of the leased Tract, it shall not relieve the Lessee of the obligation to pay any bonus due thereon to the Louisiana State Mineral Board, nor shall the Louisiana State Mineral Board be obligated to refund any consideration paid by the Lessor prior to such modification, cancellation, or abrogation, including, but not limited to, bonuses, rentals and royalties.

NOTE: The State of Louisiana does hereby reserve, and this lease shall be subject to, the imprescriptible right of surface use in the nature of a servitude in favor of the Department of Natural Resources, including its Offices and Commissions, for the sole purpose of implementing, constructing, servicing and maintaining approved coastal zone management and/or restoration projects. Utilization of any and all rights derived under this lease by the mineral lessee, its agents, successors or assigns, shall not interfere with nor hinder the reasonable surface use by the Department of Natural Resources, its Offices or Commissions, as herein above reserved.

Applicant: CRAIG S. CHARBONNET, INC.

Bidder	Cash Payment	Price/ Acre	Rental	Oil	Gas	Other

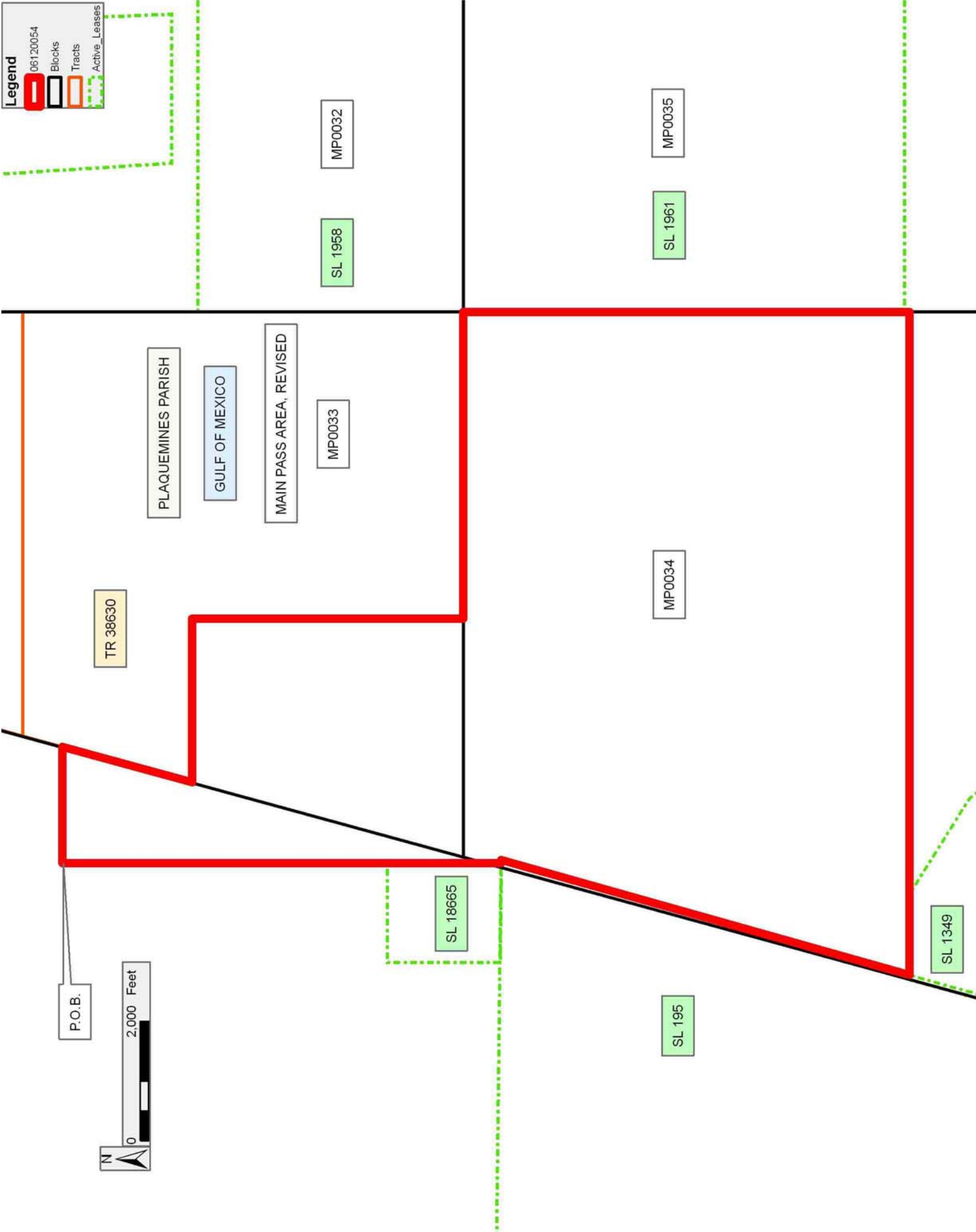
Legend

06120054

Blocks

Tracts

Active_Leases



TRACT 38778 - Portion of Block 34, Main Pass Area, Revised, Plaquemines Parish, Louisiana

All of the lands now or formerly constituting the beds and bottoms of all water bodies of every nature and description the title of which vests in the State of Louisiana, together with all islands arising therein and other lands formed by accretion or by reliction, where allowed by law, excepting tax adjudicated lands, and not presently under mineral lease and cross hatched on December 13, 2006, situated in Plaquemines Parish, Louisiana, and more particularly described as follows: Beginning at the Southeast corner of Block 34, Main Pass Area, Revised, having Coordinates of X = 2,605,850.00 and Y = 278,080.00; thence West 3,257.78 feet along the South line of said Block 34 to the Northeast corner of State Lease No. 6420 having Coordinates of X = 2,602,592.22 and Y = 278,080.00; thence West 2,390.36 feet along the North boundary of said State Lease No. 6420 to the Southeast corner of State Lease No. 1349, as amended, having Coordinates of X = 2,600,201.86 and Y = 278,080.00; thence along the boundary of said State Lease No. 1349 the following courses: North 3,826.00 feet to a point having Coordinates of X = 2,600,201.86 and Y = 281,906.00 and West 163.70 feet to a point on the boundary of State Lease No. 15941, as amended, having Coordinates of X = 2,600,038.16 and Y = 281,906.00; thence along the boundary of said State Lease No. 15941 the following courses: Northwesterly along an arc to the left having a radius 800.00 feet to a point having Coordinates of X = 2,599,726.08 and Y = 282,175.59; Northwesterly along an arc to the right having a radius of 3,100.00 feet to a point having Coordinates of X = 2,599,627.78 and Y = 282,221.19; Northwesterly along an arc to the right having a radius of 470.00 feet to a point having Coordinates of X = 2,599,552.80 and Y = 282,290.24; Northwesterly along an arc to the left having a radius of 1,212.00 feet to a point having Coordinates of X = 2,599,443.98 and Y = 282,399.87; North 82 degrees 01 minute 22 seconds East 646.43 feet to a point having Coordinates of X = 2,600,084.15 and Y = 282,489.58; Northwesterly along an arc to the left having a radius 3,930.00 feet to a point having Coordinates of X = 2,599,915.45 and Y = 282,639.58; Northeasterly along an arc to the right having a radius of 2,650.00 feet to a point having Coordinates of X = 2,599,954.87 and Y = 282,652.75; Northwesterly along an arc to the left having a radius of 3,430.00 feet to a point having Coordinates of X = 2,598,461.66 and Y = 283,567.22; Northwesterly along an arc to the left having a radius of 1,450.00 feet to a point on the boundary of said State Lease No. 1349 having Coordinates of X = 2,598,186.21 and Y = 283,621.47; thence along the boundary of said State Lease No. 1349 the following courses: North 13 degrees 19 minutes 37 seconds West 131.06 feet to a point having Coordinates of X = 2,598,156.00 and Y = 283,749.00; North 36 degrees 9 minutes 29 seconds West 740.66 feet to a point having Coordinates of X = 2,597,719.00 and Y = 284,347.00 and North 57 degrees 56 minutes 48 seconds West 1,903.12 feet to a point having Coordinates of X = 2,596,106.00 and Y = 285,357.00; thence East 9,744.00 feet to a point on the East line of said Block 34 having Coordinates of X = 2,605,850.00 and Y = 285,357.00; thence South 7,277.00 feet along the East line of said Block 34 to the point of beginning, **LESS**

AND EXCEPT any portion of State Lease No. 15941 which may lie within the above described tract, containing approximately **1,083.74 acres**, all as more particularly outlined on a plat on file in the Office of Mineral Resources, Department of Natural Resources. All bearings, distances and coordinates are based on Louisiana Coordinate System of 1927, (North or South Zone), where applicable.

NOTE: The above description of the Tract nominated for lease has been provided and corrected, where required, exclusively by the nomination party. Any mineral lease selected from this Tract and awarded by the Louisiana State Mineral Board shall be without warranty of any kind, either express, implied, or statutory, including, but not limited to, the implied warranties of merchantability and fitness for a particular purpose. Should the mineral lease awarded by the Louisiana State Mineral Board be subsequently modified, cancelled or abrogated due to the existence of conflicting leases, operating agreements, private claims or other future obligations or conditions which may affect all or any portion of the leased Tract, it shall not relieve the Lessee of the obligation to pay any bonus due thereon to the Louisiana State Mineral Board, nor shall the Louisiana State Mineral Board be obligated to refund any consideration paid by the Lessor prior to such modification, cancellation, or abrogation, including, but not limited to, bonuses, rentals and royalties.

NOTE: The State of Louisiana does hereby reserve, and this lease shall be subject to, the imprescriptible right of surface use in the nature of a servitude in favor of the Department of Natural Resources, including its Offices and Commissions, for the sole purpose of implementing, constructing, servicing and maintaining approved coastal zone management and/or restoration projects. Utilization of any and all rights derived under this lease by the mineral lessee, its agents, successors or assigns, shall not interfere with nor hinder the reasonable surface use by the Department of Natural Resources, its Offices or Commissions, as herein above reserved.

Applicant: CRAIG S. CHARBONNET, INC.

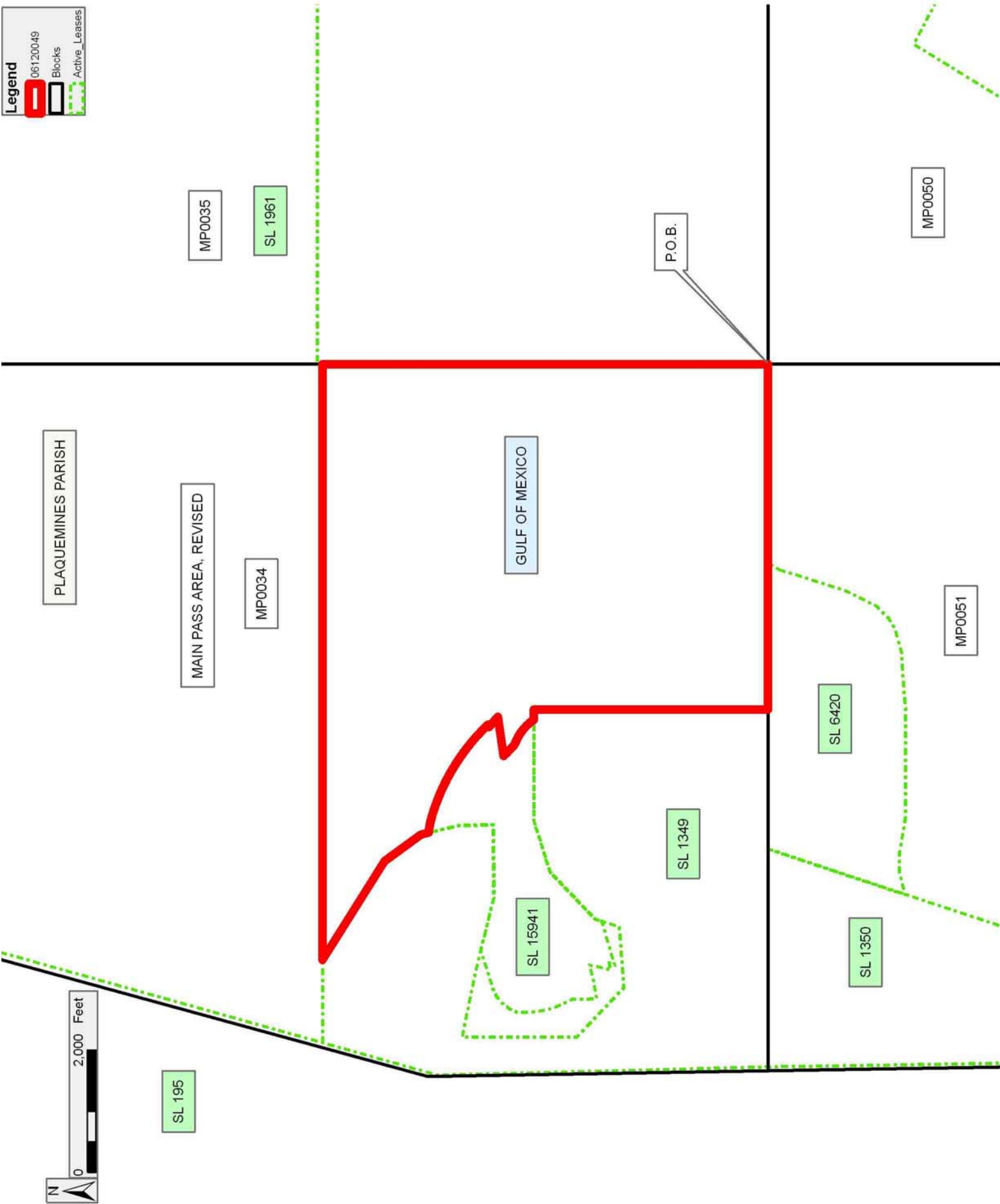
Bidder	Cash Payment	Price/Acre	Rental	Oil	Gas	Other

Legend

06120049

Blocks

Active_Leases



TRACT 38779 - Portion of Block 35, Main Pass Area, Revised, Plaquemines Parish, Louisiana

All of the lands now or formerly constituting the beds and bottoms of all water bodies of every nature and description the title of which vests in the State of Louisiana, together with all islands arising therein and other lands formed by accretion or by reliction, where allowed by law, excepting tax adjudicated lands, and not presently under mineral lease and cross hatched on December 13, 2006, situated in Plaquemines Parish, Louisiana, and more particularly described as follows: Beginning at a point having Coordinates of X = 2,605,850.00 and Y = 278,080.00; thence North 7,365.79 feet to a point being the Southwest corner of State Lease No. 1961 having Coordinates of X = 2,605,850.00 and Y = 285,445.79; thence East 14,750.00 feet along the South boundary line of State Lease No. 1961 to a point being the Southeast corner of said State Lease No. 1961 having Coordinates of X = 2,620,600.00 and Y = 285,445.79; thence South 7,365.79 feet to a point being the Northeast corner of State Lease No. 19002 and the Northwest corner of State Lease No. 19001 having Coordinates of X = 2,620,600.00 and Y = 278,080.00; thence West 2,276.00 feet along the North boundary line of said State Lease No. 19002 to a point being the Northwest corner of said State Lease No. 19002 having Coordinates of X = 2,618,324.00 and Y = 278,080.00; thence West 12,474.00 feet to the Point of Beginning, containing approximately **2,494.16 acres**, all as more particularly outlined on a plat on file in the Office of Mineral Resources, Department of Natural Resources. All bearings, distances and coordinates are based on Louisiana Coordinate System of 1927, (North or South Zone), where applicable.

NOTE: The above description of the Tract nominated for lease has been provided and corrected, where required, exclusively by the nomination party. Any mineral lease selected from this Tract and awarded by the Louisiana State Mineral Board shall be without warranty of any kind, either express, implied, or statutory, including, but not limited to, the implied warranties of merchantability and fitness for a particular purpose. Should the mineral lease awarded by the Louisiana State Mineral Board be subsequently modified, cancelled or abrogated due to the existence of conflicting leases, operating agreements, private claims or other future obligations or conditions which may affect all or any portion of the leased Tract, it shall not relieve the Lessee of the obligation to pay any bonus due thereon to the Louisiana State Mineral Board, nor shall the Louisiana State Mineral Board be obligated to refund any consideration paid by the Lessor prior to such modification, cancellation, or abrogation, including, but not limited to, bonuses, rentals and royalties.

NOTE: The State of Louisiana does hereby reserve, and this lease shall be subject to, the imprescriptible right of surface use in the nature of a servitude in favor of the Department of Natural Resources, including its Offices and Commissions, for the sole purpose of implementing, constructing, servicing and maintaining approved coastal zone management and/or restoration projects. Utilization of any and all rights derived

under this lease by the mineral lessee, its agents, successors or assigns, shall not interfere with nor hinder the reasonable surface use by the Department of Natural Resources, its Offices or Commissions, as herein above reserved.

Applicant: CRAIG S. CHARBONNET, INC.

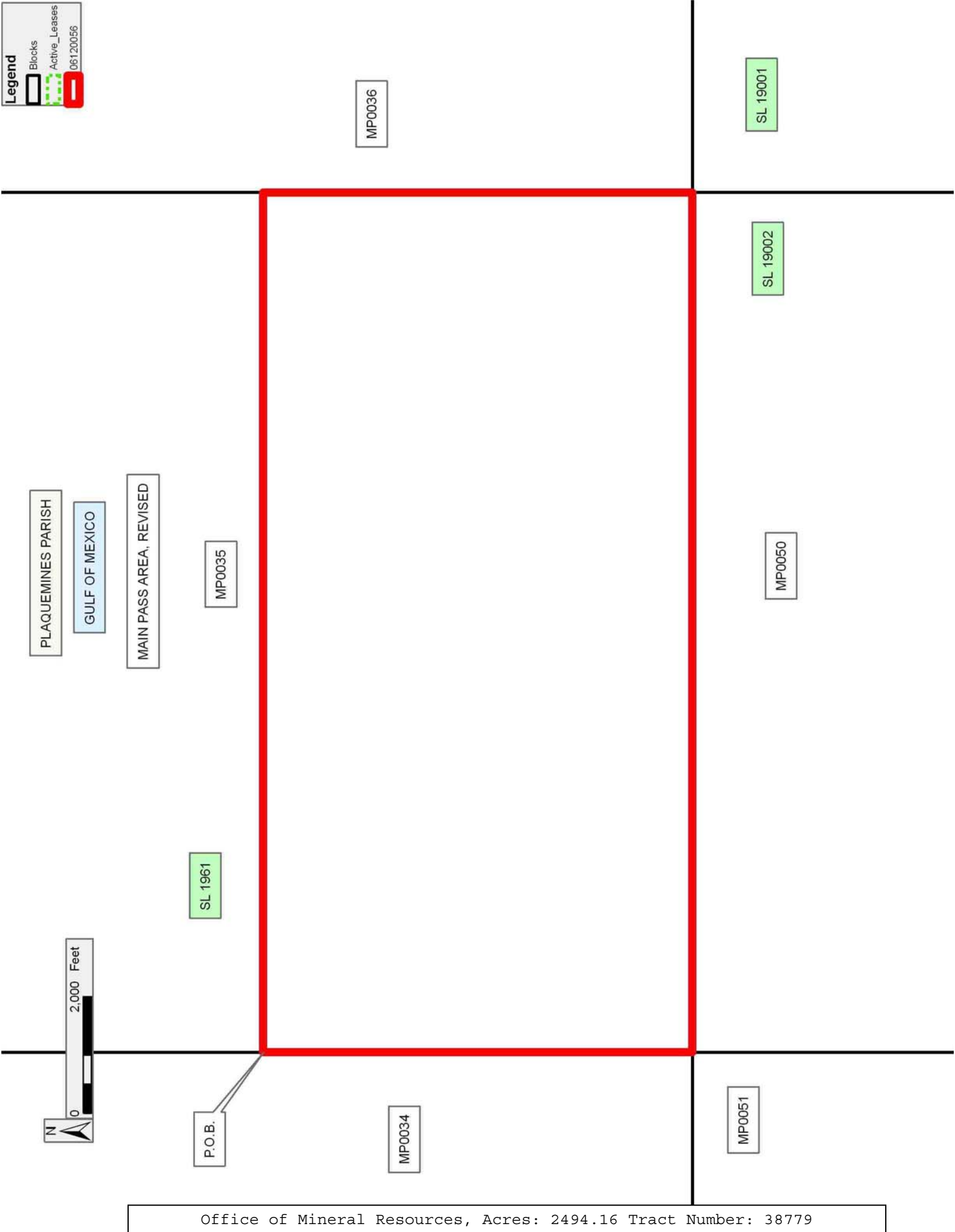
Bidder	Cash Payment	Price/ Acre	Rental	Oil	Gas	Other

Legend

Blocks

Active_Leases

06120056



TRACT 38780 - Terrebonne Parish, Louisiana

All of the lands now or formerly constituting the beds and bottoms of all water bodies of every nature and description the title of which vests in the State of Louisiana, together with all islands arising therein and other lands formed by accretion or by reliction, where allowed by law, excepting tax adjudicated lands, and not presently under mineral lease and cross hatched on December 13, 2006, situated in Terrebonne Parish, Louisiana, and more particularly described as follows: Beginning at the most Southern Northeast corner of State Lease No. 17755, as amended, said corner located on the West boundary of State Lease No. 17535, having Coordinates of X = 2,219,650.00 and Y = 268,593.10; thence West 1,648.96 feet along a North boundary of said State Lease No. 17755 to an interior corner, having Coordinates of X = 2,218,001.04 and Y = 268,593.10; thence North 426.36 feet along an East boundary of said State Lease No. 17755 to an interior corner, having Coordinates of X = 2,218,001.04 and Y = 269,019.46; thence North 89 degrees 49 minutes 56 seconds East 879.52 feet along a South boundary of said State Lease No. 17755 to its most Northern Southeast corner, having Coordinates of X = 2,218,880.56 and Y = 269,022.03; thence North 893.57 feet along an East boundary of said State Lease No. 17755 to its most Northern Northeast corner, said corner located on the South boundary of State Lease No. 5351, as amended, having Coordinates of X = 2,218,880.56 and Y = 269,915.60; thence North 84 degrees 00 minutes 13 seconds East 773.67 feet along the South boundary of said State Lease No. 5351 to the Northwest corner of said State Lease No. 17535, having Coordinates of X = 2,219,650.00 and Y = 269,996.42; thence South 1,403.32 feet along the West boundary of said State Lease No. 17535 to the point of beginning, containing approximately **32.71 acres**, all as more particularly outlined on a plat on file in the Office of Mineral Resources, Department of Natural Resources. All bearings, distances and coordinates are based on Louisiana Coordinate System of 1927, (North or South Zone), where applicable.

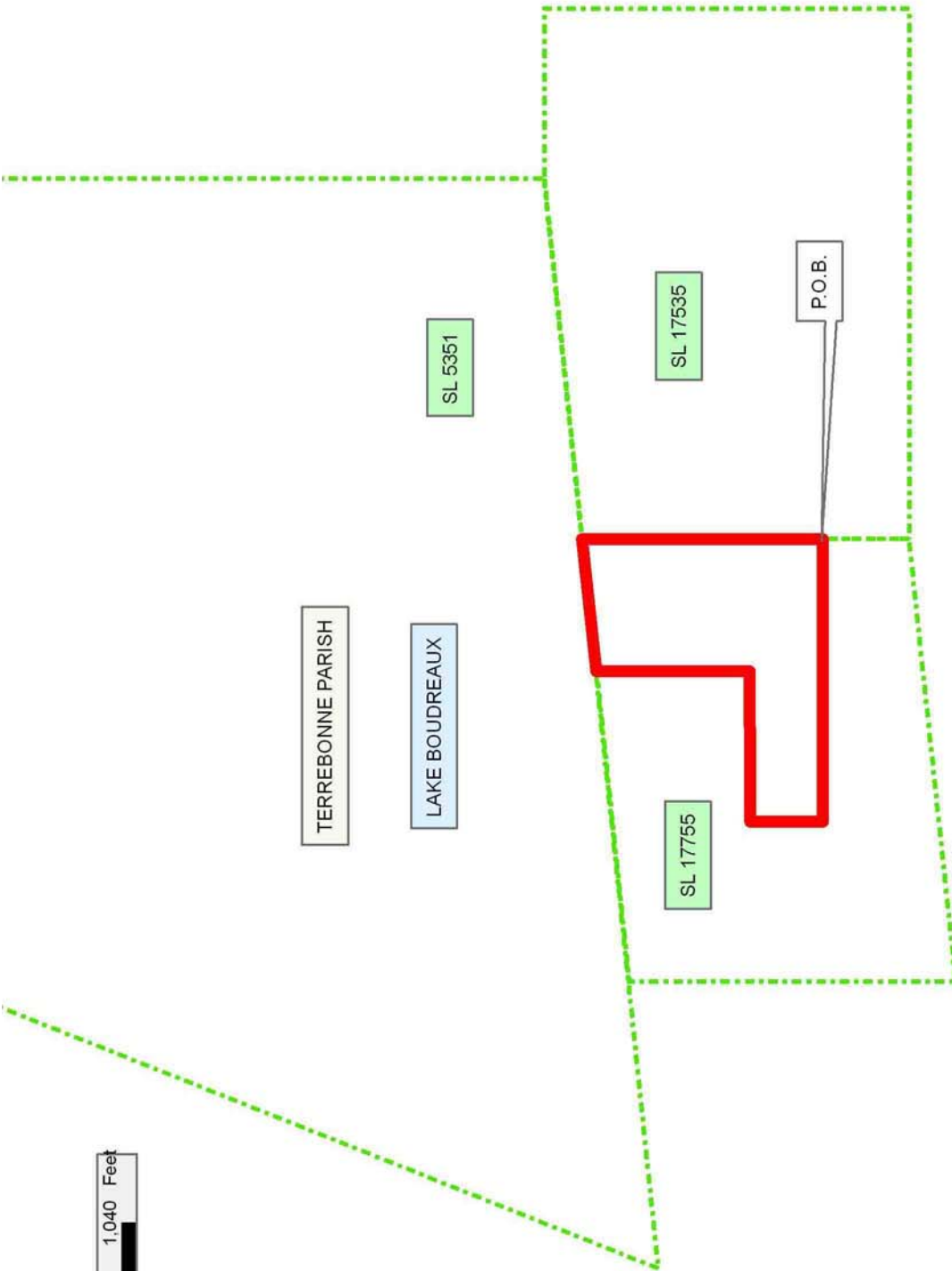
NOTE: The above description of the Tract nominated for lease has been provided and corrected, where required, exclusively by the nomination party. Any mineral lease selected from this Tract and awarded by the Louisiana State Mineral Board shall be without warranty of any kind, either express, implied, or statutory, including, but not limited to, the implied warranties of merchantability and fitness for a particular purpose. Should the mineral lease awarded by the Louisiana State Mineral Board be subsequently modified, cancelled or abrogated due to the existence of conflicting leases, operating agreements, private claims or other future obligations or conditions which may affect all or any portion of the leased Tract, it shall not relieve the Lessee of the obligation to pay any bonus due thereon to the Louisiana State Mineral Board, nor shall the Louisiana State Mineral Board be obligated to refund any consideration paid by the Lessor prior to such modification, cancellation, or abrogation, including, but not limited to, bonuses, rentals and royalties.

NOTE: The State of Louisiana does hereby reserve, and this lease shall be subject to, the imprescriptible right of surface use in the nature of a servitude in favor of the Department of Natural Resources, including its Offices and Commissions, for the sole purpose of implementing, constructing, servicing and maintaining approved coastal zone management and/or restoration projects. Utilization of any and all rights derived under this lease by the mineral lessee, its agents, successors or assigns, shall not interfere with nor hinder the reasonable surface use by the Department of Natural Resources, its Offices or Commissions, as herein above reserved.

NOTE: The Department of Wildlife and Fisheries has designated certain areas in the coastal waters of the State of Louisiana as Oyster Seed Bed Areas. The exact location of those Seed Bed Areas must be obtained from the Department of Wildlife and Fisheries and any work done under a mineral lease from the State of Louisiana may necessarily be conducted in conformity with the rules and regulations promulgated by the said Department of Wildlife and Fisheries for Oyster Seed Bed Areas.

Applicant: THEOPHILUS OIL GAS & LAND SERVICES LLC

Bidder	Cash Payment	Price/ Acre	Rental	Oil	Gas	Other



TRACT 38781 - Plaquemines Parish, Louisiana

All of the lands now or formerly constituting the beds and bottoms of all water bodies of every nature and description the title of which vests in the State of Louisiana, together with all islands arising therein and other lands formed by accretion or by reliction, where allowed by law, excepting tax adjudicated lands, and not presently under mineral lease and cross hatched on December 13, 2006, situated in Plaquemines Parish, Louisiana, and more particularly described as follows: Beginning at a point having Coordinates of X = 2,535,421.00 and Y = 258,600.00; thence East 13,047.00 feet to a point having Coordinates of X = 2,548,468.00 and Y = 258,600.00; thence South 7,226.00 feet to a point having Coordinates of X = 2,548,468.00 and Y = 251,374.00; thence West 13,047.00 feet to a point having Coordinates of X = 2,535,421.00 and Y = 251,374.00; thence North 7,226.00 feet to the point of beginning, containing approximately **1,565 acres**, all as more particularly outlined on a plat on file in the Office of Mineral Resources, Department of Natural Resources. All bearings, distances and coordinates are based on Louisiana Coordinate System of 1927, (North or South Zone), where applicable.

NOTE: The above description of the Tract nominated for lease has been provided and corrected, where required, exclusively by the nomination party. Any mineral lease selected from this Tract and awarded by the Louisiana State Mineral Board shall be without warranty of any kind, either express, implied, or statutory, including, but not limited to, the implied warranties of merchantability and fitness for a particular purpose. Should the mineral lease awarded by the Louisiana State Mineral Board be subsequently modified, cancelled or abrogated due to the existence of conflicting leases, operating agreements, private claims or other future obligations or conditions which may affect all or any portion of the leased Tract, it shall not relieve the Lessee of the obligation to pay any bonus due thereon to the Louisiana State Mineral Board, nor shall the Louisiana State Mineral Board be obligated to refund any consideration paid by the Lessor prior to such modification, cancellation, or abrogation, including, but not limited to, bonuses, rentals and royalties.

NOTE: The State of Louisiana does hereby reserve, and this lease shall be subject to, the imprescriptible right of surface use in the nature of a servitude in favor of the Department of Natural Resources, including its Offices and Commissions, for the sole purpose of implementing, constructing, servicing and maintaining approved coastal zone management and/or restoration projects. Utilization of any and all rights derived under this lease by the mineral lessee, its agents, successors or assigns, shall not interfere with nor hinder the reasonable surface use by the Department of Natural Resources, its Offices or Commissions, as herein above reserved.

NOTE: The Department of Wildlife and Fisheries has designated certain areas in the coastal waters of the State of Louisiana as Oyster Seed Bed Areas. The exact location of those Seed Bed Areas must be obtained from

the Department of Wildlife and Fisheries and any work done under a mineral lease from the State of Louisiana may necessarily be conducted in conformity with the rules and regulations promulgated by the said Department of Wildlife and Fisheries for Oyster Seed Bed Areas.

Applicant: SPANDREL RESOURCES

Bidder	Cash Payment	Price/ Acre	Rental	Oil	Gas	Other

Legend

 06120045

 06120045water

DOQQ2004

PLAQUEMINES PARISH

BAYOU COURANT

P.O.B.



ADAMS BAY

HALFMOON BAY



TRACT 38782 - Plaquemines Parish, Louisiana

All of the lands now or formerly constituting the beds and bottoms of all water bodies of every nature and description the title of which vests in the State of Louisiana, together with all islands arising therein and other lands formed by accretion or by reliction, where allowed by law, excepting tax adjudicated lands, and not presently under mineral lease and cross hatched on December 13, 2006, situated in Plaquemines Parish, Louisiana, and more particularly described as follows: Beginning at a point having Coordinates of X = 2,548,468.00 and Y = 258,600.00; thence East 14,862.00 feet to the Northernmost Northwest corner of State Lease No. 18672 having Coordinates of X = 2,563,330.00 and Y = 258,600.00; thence along the boundaries of said State Lease No. 18672 the following courses: South 63 degrees 49 minutes 25 seconds West 4,284.40 feet, South 3,710.00 feet and North 63 degrees 50 minutes 18 seconds East 2,258.64 feet to a point on its Southern boundary having Coordinates of X = 2,561,512.25 and Y = 253,995.84; thence South 00 degrees 03 minutes 36 seconds East 2,621.84 feet to a point having Coordinates of X = 2,561,515.00 and Y = 251,374.00; thence West 13,047.00 feet to a point having Coordinates of X = 2,548,468.00 and Y = 251,374.00; thence North 7,226.00 feet to the point of beginning, containing approximately **1,021 acres**, all as more particularly outlined on a plat on file in the Office of Mineral Resources, Department of Natural Resources. All bearings, distances and coordinates are based on Louisiana Coordinate System of 1927, (North or South Zone), where applicable.

NOTE: The above description of the Tract nominated for lease has been provided and corrected, where required, exclusively by the nomination party. Any mineral lease selected from this Tract and awarded by the Louisiana State Mineral Board shall be without warranty of any kind, either express, implied, or statutory, including, but not limited to, the implied warranties of merchantability and fitness for a particular purpose. Should the mineral lease awarded by the Louisiana State Mineral Board be subsequently modified, cancelled or abrogated due to the existence of conflicting leases, operating agreements, private claims or other future obligations or conditions which may affect all or any portion of the leased Tract, it shall not relieve the Lessee of the obligation to pay any bonus due thereon to the Louisiana State Mineral Board, nor shall the Louisiana State Mineral Board be obligated to refund any consideration paid by the Lessor prior to such modification, cancellation, or abrogation, including, but not limited to, bonuses, rentals and royalties.

NOTE: The State of Louisiana does hereby reserve, and this lease shall be subject to, the imprescriptible right of surface use in the nature of a servitude in favor of the Department of Natural Resources, including its Offices and Commissions, for the sole purpose of implementing, constructing, servicing and maintaining approved coastal zone management and/or restoration projects. Utilization of any and all rights derived under this lease by the mineral lessee, its agents, successors or assigns, shall not interfere with nor hinder the reasonable surface use by the

Department of Natural Resources, its Offices or Commissions, as herein above reserved.

NOTE: The Department of Wildlife and Fisheries has designated certain areas in the coastal waters of the State of Louisiana as Oyster Seed Bed Areas. The exact location of those Seed Bed Areas must be obtained from the Department of Wildlife and Fisheries and any work done under a mineral lease from the State of Louisiana may necessarily be conducted in conformity with the rules and regulations promulgated by the said Department of Wildlife and Fisheries for Oyster Seed Bed Areas.

Applicant: SPANDREL RESOURCES

Bidder	Cash Payment	Price/ Acre	Rental	Oil	Gas	Other

Legend

- 06120046
- 06120046water
- Active_Leases

DOQQ2004

