

SPECIAL NOTICE

On Monday, October 30, 2006, the Office of Mineral Resources on behalf of the State Mineral Board advertised in the "Notice of Publication," for receipt of sealed bids on or before **12:00 o'clock p.m. on Tuesday, December 12, 2006**, for State Leases to be awarded upon **Tract Nos. 38735 through 38806**, inclusive at its **December 13, 2006** Lease Sale. Within said advertisement additional provisions were inadvertently advertised for **Tract No. 38789, Calcasieu Parish**. By virtue of this public notice, **Tract No. 38789** in Calcasieu Parish, Louisiana is hereby corrected as follows:

TRACT 38789 - Calcasieu Parish School Board Calcasieu Parish, Louisiana

The State Mineral Board acting on behalf of the Parish School Board(s), pursuant to Resolution(s) adopted by that (those) body(ies) and in accordance with Louisiana Revised Statutes 30:121-136 and 151-156, as amended, and Article XIV, Section 16(A)(9) and (B) of the Louisiana Constitution of 1974, as same may be continued and promulgated in proper statutory form and, further, amended from time to time, advertises the lands not under mineral lease on December 13, 2006, excluding the beds and bottoms of all navigable water bodies located within the following: All of Section 16, Township 9 South, Range 13 West, lying within the geographical boundaries of the Sabine Island WMA containing approximately **280 acres**, all as more particularly outlined on a plat on file in the Office of Mineral Resources, Department of Natural Resources. The description is based on information provided by the State Agency regarding location and ownership of surface and mineral rights. All bearings, distances and coordinates, if applicable, are based on Louisiana Coordinate System of 1927, (North or South Zone).

NOTE: The above description of the Tract nominated for lease has been provided and corrected, where required, exclusively by the nomination party. Any mineral lease selected from this Tract and awarded by the Louisiana State Mineral Board shall be without warranty of any kind, either express, implied, or statutory, including, but not limited to, the implied warranties of merchantability and fitness for a particular purpose. Should the mineral lease awarded by the Louisiana State Mineral Board be subsequently modified, cancelled or abrogated due to the existence of conflicting leases, operating agreements, private claims or other future obligations or conditions which may affect all or any portion of the leased Tract, it shall not relieve the Lessee of the obligation to pay any bonus due thereon to the Louisiana State Mineral Board, nor shall the Louisiana State Mineral Board be obligated to refund any consideration paid by the Lessor prior to such modification, cancellation, or abrogation, including, but not limited to, bonuses, rentals and royalties.

NOTE: This tract is located within the boundaries of a wildlife management area or refuge and any operations conducted thereon in conjunction with this mineral lease may be subject to rules and regulations promulgated by the Department of Wildlife and Fisheries for the protection of fish, birds and other wildlife including, but not necessarily limited to, the following:

1. No activities will be allowed without written authorization of the Louisiana Department of Wildlife and Fisheries. All projects will be coordinated and approved by the Sabine Island WMA Supervisor prior to any activities on the wildlife management area.
2. Proposed projects will be evaluated on a case by case basis. Modifications to proposed project features including but not limited to access routes, well sites, flowlines and appurtenant structures may be required by the Louisiana Department of Wildlife and Fisheries.
3. Compliance with the Sabine Island WMA regulations will be required unless otherwise specified by the Department.
4. Compensatory mitigation will be required to offset unavoidable habitat impacts.
5. Removal of all structures, facilities and equipment will be required within 120 days of abandonment unless otherwise agreed to by the Department.
6. No activities will be allowed during the hunting season unless approved by the department.
7. Prior to submitting applications for wetland permits to Federal and State permitting agencies, the leaseholder shall coordinate project details with the Department. Contact person for the Department will be Mike Windham at (504) 568-5886 or 225-765-2807.

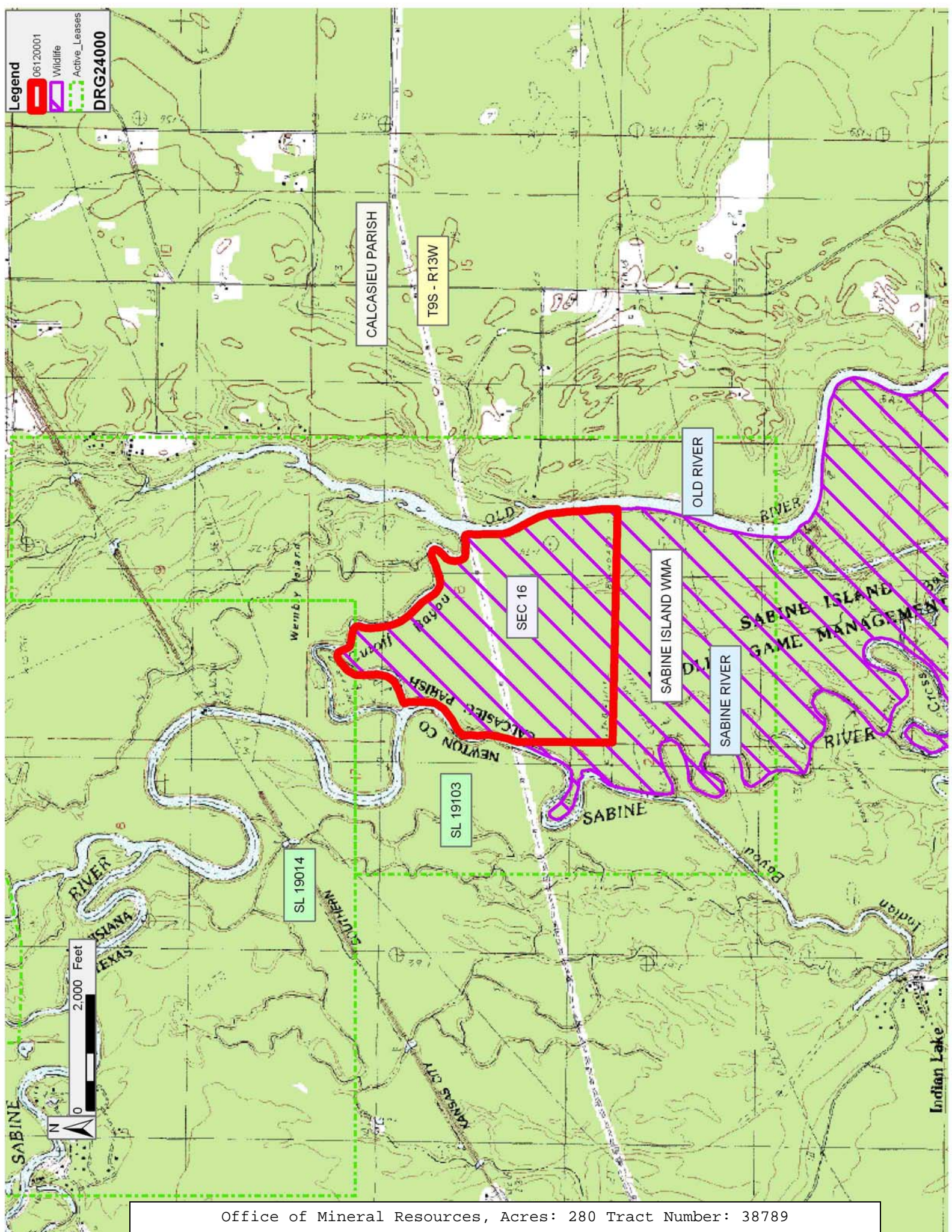
Applicant: DAY EXPLORATION to Agency and by Resolution from the Calcasieu Parish School Board authorizing the Mineral Board to act in its behalf

Bidder	Cash Payment	Price/Acre	Rental	Oil	Gas	Other

Legend

-  06120001
-  Wildlife
-  Active_Leases

DRG24000



Office of Mineral Resources, Acres: 280 Tract Number: 38789