

TRACT 35094 - Portion of Block 42, South Pass Area, Plaquemines Parish, Louisiana

That portion of Block 42, South Pass Area, Plaquemines Parish, Louisiana, belonging to the State of Louisiana and not presently under mineral lease on December 11, 2002, being more fully described as follows: Beginning at a point having Coordinates of X = 2,615,928.00 and Y = 82,150.00, said point also being the Southwest corner of Block 42, South Pass Area; thence North 4,954.62 feet on and along the West line of said Block 42, South Pass Area, to a point having Coordinates of X = 2,615,928.00 and Y = 87,104.62, said point also being on the Eastern boundary of State Lease No. 12967, as amended; thence on and along said Eastern boundary of said State Lease No. 12967 the following courses and distances, to-wit: North 29 degrees 44 minutes 42 seconds East 403.11 feet to a point having Coordinates of X = 2,616,128.00 and Y = 87,454.62; North 1,400.00 feet to a point having Coordinates of X = 2,616,128.00 and Y = 88,854.62; and North 38 degrees 51 minutes 34 seconds East 4,462.77 feet to a point having Coordinates of X = 2,618,928.00 and Y = 92,329.72, said point also being on the Western boundary of State Lease No. 16991; thence on and along the Western and Southern boundaries of said State Lease No. 16991 the following courses and distances, to-wit: South 29 degrees 55 minutes 24 seconds East 3,231.50 feet to a point having Coordinates of X = 2,620,540.00 and Y = 89,529.00; and East 1,498.15 feet to a point having Coordinates of X = 2,622,038.15 and Y = 89,529.00, said point also being the Northwest corner of State Lease No. 17197; thence on and along the Western, Southern, and Eastern boundaries of said State Lease No. 17197 the following courses and distances, to-wit: South 2,301.38 feet to a point having Coordinates of X = 2,622,038.15 and Y = 87,227.62; East 3,497.85 feet to a point having Coordinates of X = 2,625,536.00 and Y = 87,227.62; and North 1.38 feet to a point having Coordinates of X = 2,625,536.00 and Y = 87,229.00, said point also being the Southwest corner of State Lease No. 16869; thence East 73.64 feet on and along the Southern boundary of said State Lease No. 16869 to a point having coordinates of X = 2,625,609.64 and Y = 87,229.00, said point also being the Northwest corner of State Lease No. 17196; thence on and along the Western and Southern boundaries of said State Lease No. 17196 the following courses and distances, to-wit: South 1,779.23 feet to a point having Coordinates of X = 2,625,609.64 and Y = 85,449.77; and East 2,671.17 feet to a point having Coordinates of X = 2,628,280.81 and Y = 85,449.77; thence South 38 degrees 56 minutes 39 seconds West 3,585.65 feet to a point having Coordinates of X = 2,626,027.00 and Y = 82,661.00; thence South 38 degrees 58 minutes 36 seconds West 657.32 feet to a point having Coordinates of X = 2,625,613.54 and Y = 82,150.00, said point also being on the South line of said Block 42, South Pass Area; thence West 9,685.54 feet on and along said South line of said Block 42, South Pass Area, to the point of beginning, containing approximately **1,662.54 acres, LESS AND EXCEPT** that portion thereof, if any, lying seaward of the line three nautical miles from the coast line of Louisiana, as said three mile line has been decreed by the Supreme Court of the United States, as determined by a Special Master appointed therein, in litigation styled **United States v. State of Louisiana et al No. 9 Original**, in 1975, all as more particularly outlined

on a plat on file in the Office of Mineral Resources, Department of Natural Resources, as provided by the applicant. All bearings, distances and coordinates are based on Louisiana Coordinate System of 1927, (North or South Zone).

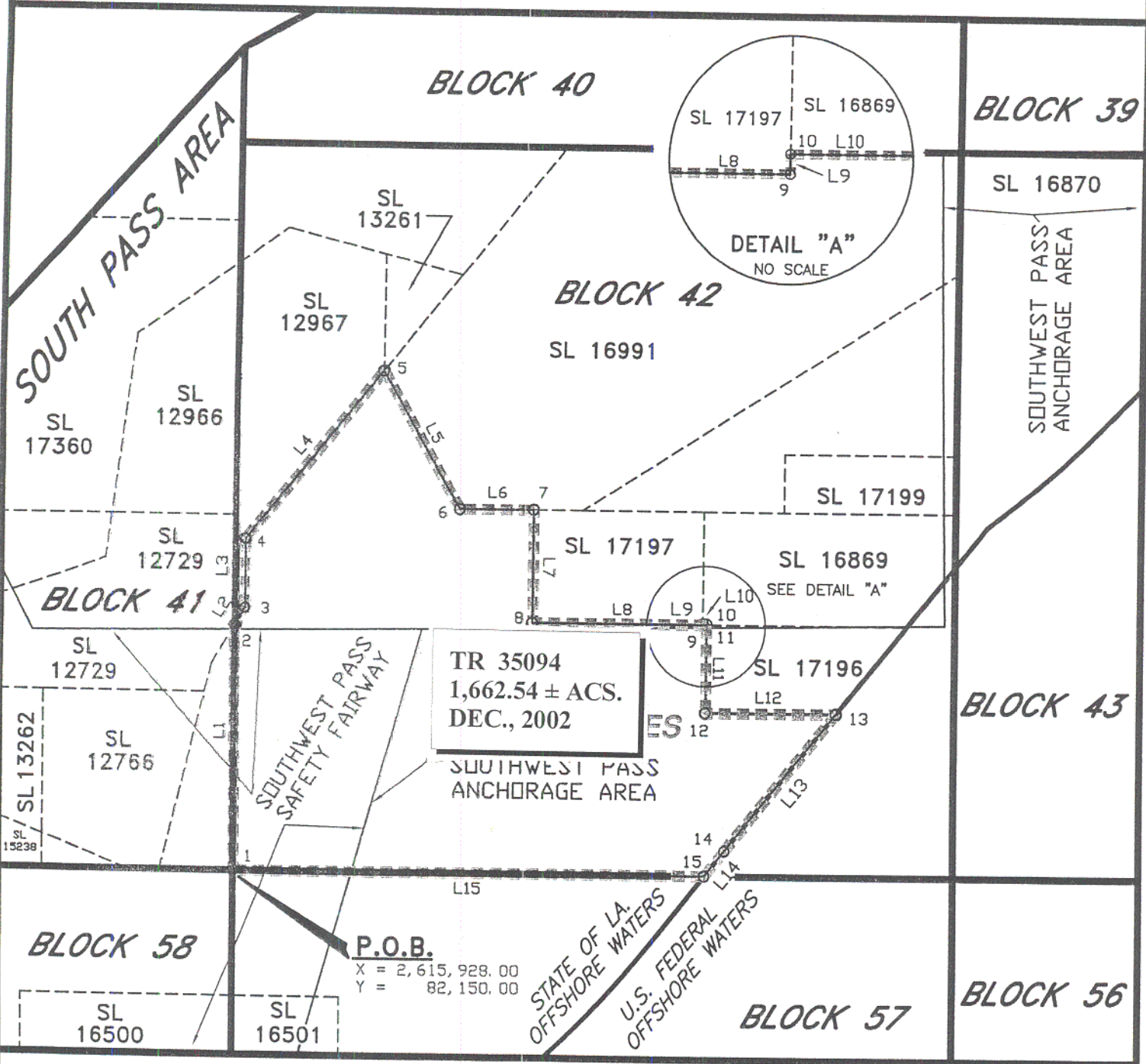
NOTE: The above description of the Tract nominated for lease has been provided and corrected, where required, exclusively by the nomination party. Any mineral lease selected from this Tract and awarded by the Louisiana State Mineral Board shall be without warranty of any kind, either express, implied, or statutory, including, but not limited to, the implied warranties of merchantability and fitness for a particular purpose. Should the mineral lease awarded by the Louisiana State Mineral Board be subsequently modified, cancelled or abrogated due to the existence of conflicting leases, operating agreements, private claims or other future obligations or conditions which may affect all or any portion of the leased Tract, it shall not relieve the Lessee of the obligation to pay any bonus due thereon to the Louisiana State Mineral Board, nor shall the Louisiana State Mineral Board be obligated to refund any consideration paid by the Lessor prior to such modification, cancellation, or abrogation, including, but not limited to, bonuses, rentals and royalties.

NOTE: It appears, according to our records, that a portion of this Tract is located within the restrictive safety fairway area as set out by the Corps of Engineers, U.S. Army and/or the restrictive anchorage area as set out by the U.S. Coast Guard.

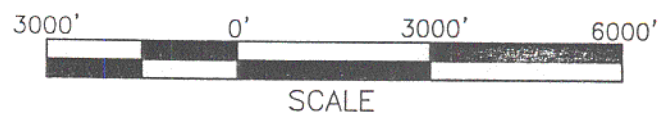
NOTE: The State of Louisiana does hereby reserve, and this lease shall be subject to, the imprescriptible right of surface use in the nature of a servitude in favor of the Department of Natural Resources, including its Offices and Commissions, for the sole purpose of implementing, constructing, servicing and maintaining approved coastal zone management and/or restoration projects. Utilization of any and all rights derived under this lease by the mineral lessee, its agents, successors or assigns, shall not interfere with nor hinder the reasonable surface use by the Department of Natural Resources, its Offices or Commissions, as herein above reserved.

Applicant: Robert A. Schroeder, Inc.

Bidder	Cash Payment	Price / Acre	Rental	Oil	Gas	Other



BLOCK 42
SOUTH PASS AREA
PLAQUEMINES PARISH, LOUISIANA
SCALE 1" = 3000'



ALL COORDINATES, BEARINGS AND DISTANCES ARE GRID, AND ARE ON THE LOUISIANA LAMBERT PLANE COORDINATE SYSTEM, SOUTH ZONE, 1927 NORTH AMERICAN DATUM.

TRACT 35095 - Portion of Block 42, South Pass Area, Plaquemines Parish, Louisiana

That portion of Block 42, South Pass Area, Plaquemines Parish, Louisiana, belonging to the State of Louisiana and not presently under mineral lease on December 11, 2002, being more fully described as follows: Beginning at a point having Coordinates of X = 2,630,686.00 and Y = 90,729.00, said point also being on the East line of Block 42, South Pass Area, said point also being on the Northeast corner of State Lease No. 17199; thence on and along the Northern and Western boundaries of said State Lease No. 17199 the following courses and distances, to-wit: West 3,503.32 feet to a point having Coordinates of X = 2,627,182.68 and Y = 90,729.00; and South 1,200.00 feet to a point having Coordinates of X = 2,627,182.68 and Y = 89,529.00, said point also being on the Northern boundary of said State Lease No. 16869; thence West 1,646.68 feet on and along said Northern boundary of said State Lease No. 16869 to a point having Coordinates of X = 2,625,536.00 and Y = 89,529.00, said point also being the Northwest corner of said State Lease No. 16869 and the Northeast corner of State Lease No. 17197; thence West 2,496.00 feet on and along the Northern boundary of said State Lease No. 17197 to a point having Coordinates of X = 2,623,040.00 and Y = 89,529.00, said point also being on the Eastern boundary of State Lease No. 16991; thence North 57 degrees 19 minutes 29 seconds East 9,083.53 on and along said Eastern boundary of said State Lease No. 16991 to a point having Coordinates of X = 2,630,686.00 and Y = 94,433.00, said point also being on said East line of said Block 42, South Pass Area; thence South 3,704.00 feet on and along said East line of said Block 42, South Pass Area, to the point of beginning, containing approximately **333.88 acres**, all as more particularly outlined on a plat on file in the Office of Mineral Resources, Department of Natural Resources, as provided by the applicant. All bearings, distances and coordinates are based on Louisiana Coordinate System of 1927, (North or South Zone).

NOTE: The above description of the Tract nominated for lease has been provided and corrected, where required, exclusively by the nomination party. Any mineral lease selected from this Tract and awarded by the Louisiana State Mineral Board shall be without warranty of any kind, either express, implied, or statutory, including, but not limited to, the implied warranties of merchantability and fitness for a particular purpose. Should the mineral lease awarded by the Louisiana State Mineral Board be subsequently modified, cancelled or abrogated due to the existence of conflicting leases, operating agreements, private claims or other future obligations or conditions which may affect all or any portion of the leased Tract, it shall not relieve the Lessee of the obligation to pay any bonus due thereon to the Louisiana State Mineral Board, nor shall the Louisiana State Mineral Board be obligated to refund any consideration paid by the Lessor prior to such modification, cancellation, or abrogation, including, but not limited to, bonuses, rentals and royalties.

NOTE: The Department of Wildlife and Fisheries has designated certain areas in the coastal waters of the State of Louisiana as Oyster Seed Bed Areas. The exact location of those Seed Bed Areas must be obtained from

the Department of Wildlife and Fisheries and any work done under a mineral lease from the State of Louisiana may necessarily be conducted in conformity with the rules and regulations promulgated by the said Department of Wildlife and Fisheries for Oyster Seed Bed Areas.

NOTE: It appears, according to our records, that a portion of this Tract is located within the restrictive safety fairway area as set out by the Corps of Engineers, U.S. Army and/or the restrictive anchorage area as set out by the U.S. Coast Guard.

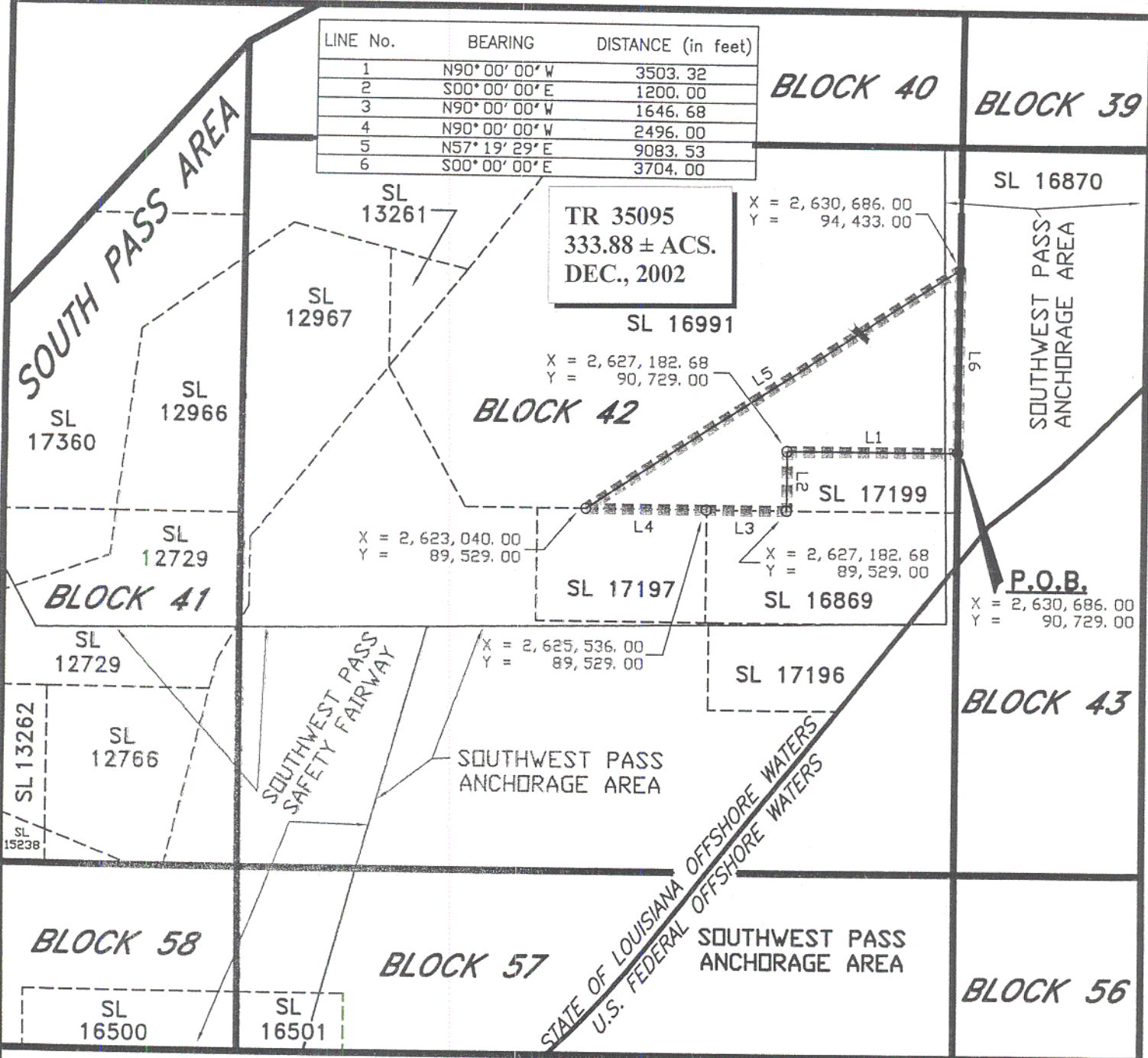
NOTE: The State of Louisiana does hereby reserve, and this lease shall be subject to, the imprescriptible right of surface use in the nature of a servitude in favor of the Department of Natural Resources, including its Offices and Commissions, for the sole purpose of implementing, constructing, servicing and maintaining approved coastal zone management and/or restoration projects. Utilization of any and all rights derived under this lease by the mineral lessee, its agents, successors or assigns, shall not interfere with nor hinder the reasonable surface use by the Department of Natural Resources, its Offices or Commissions, as herein above reserved.

Applicant: Robert A. Schroeder, Inc.

Bidder	Cash Payment	Price / Acre	Rental	Oil	Gas	Other

LINE No.	BEARING	DISTANCE (in feet)
1	N90°00'00"W	3503.32
2	S00°00'00"E	1200.00
3	N90°00'00"W	1646.68
4	N90°00'00"W	2496.00
5	N57°19'29"E	9083.53
6	S00°00'00"E	3704.00

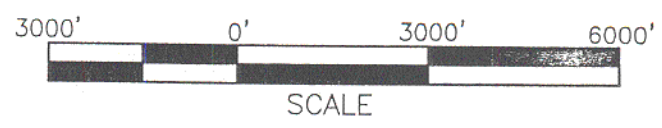
TR 35095
333.88 ± ACS.
DEC., 2002



ALL COORDINATES, BEARINGS AND DISTANCES ARE GRID, AND ARE ON THE LOUISIANA LAMBERT PLANE COORDINATE SYSTEM, SOUTH ZONE, 1927 NORTH AMERICAN DATUM.



LOCATED IN
 BLOCK 42
 SOUTH PASS AREA
 PLAQUEMINES PARISH, LOUISIANA
 SCALE 1" = 3000'



TRACT 35096 - Portion of Block 57, South Pass Area, Plaquemines Parish, Louisiana

That portion of Block 57, South Pass Area, Plaquemines Parish, Louisiana, belonging to the State of Louisiana and not presently under mineral lease on December 11, 2002, being more fully described as follows: Beginning at a point having Coordinates of X = 2,615,928.00 and Y = 82,150.00, said point also being the Northwest corner of Block 57, South Pass Area; thence East 9,685.54 feet on and along the North line of said Block 57, South Pass Area, to a point having Coordinates of X = 2,625,613.54 and Y = 82,150.00; thence South 38 degrees 58 minutes 36 seconds West 2,024.69 feet to a point having Coordinates of X = 2,624,340.00 and Y = 80,576.00; thence 3,935.62 feet on a non-tangent curve to the right having a radius of 18,240.60 feet to a point having Coordinates of X = 2,621,555.00 and Y = 77,806.00; thence South 51 degrees 20 minutes 25 seconds West 480.23 feet to a point having Coordinates of X = 2,621,180.00 and Y = 77,506.00; thence 3,646.82 feet on a non-tangent curve to the right having a radius of 18,240.60 feet to a point having Coordinates of X = 2,618,124.00 and Y = 75,527.14, said point also being an Eastern boundary of State Lease No. 16501, as amended; thence on and along the Eastern and Northern boundaries of said State Lease No. 16501 the following courses and distances, to-wit: North 4,096.78 feet to a point having Coordinates of X = 2,618,124.00 and Y = 79,623.92; and West 2,196.00 feet to a point having Coordinates of X = 2,615,928.00 and Y = 79,623.92, said point also being on the West line of said Block 57, South Pass Area; thence North 2,526.08 feet on and along said West line of said Block 57, South Pass Area, to the point of beginning, containing approximately **784.90 acres, LESS AND EXCEPT** that portion thereof, if any, lying seaward of the line three nautical miles from the coast line of Louisiana, as said three mile line has been decreed by the Supreme Court of the United States, as determined by a Special Master appointed therein, in litigation styled **United States v. State of Louisiana et al No. 9 Original**, in 1975, all as more particularly outlined on a plat on file in the Office of Mineral Resources, Department of Natural Resources, as provided by the applicant. All bearings, distances and coordinates are based on Louisiana Coordinate System of 1927, (North or South Zone).

NOTE: The above description of the Tract nominated for lease has been provided and corrected, where required, exclusively by the nomination party. Any mineral lease selected from this Tract and awarded by the Louisiana State Mineral Board shall be without warranty of any kind, either express, implied, or statutory, including, but not limited to, the implied warranties of merchantability and fitness for a particular purpose. Should the mineral lease awarded by the Louisiana State Mineral Board be subsequently modified, cancelled or abrogated due to the existence of conflicting leases, operating agreements, private claims or other future obligations or conditions which may affect all or any portion of the leased Tract, it shall not relieve the Lessee of the obligation to pay any bonus due thereon to the Louisiana State Mineral Board, nor shall the Louisiana State Mineral Board be obligated to refund any consideration

paid by the Lessor prior to such modification, cancellation, or abrogation, including, but not limited to, bonuses, rentals and royalties.

NOTE: It appears, according to our records, that a portion of this Tract is located within the restrictive safety fairway area as set out by the Corps of Engineers, U.S. Army and/or the restrictive anchorage area as set out by the U.S. Coast Guard.

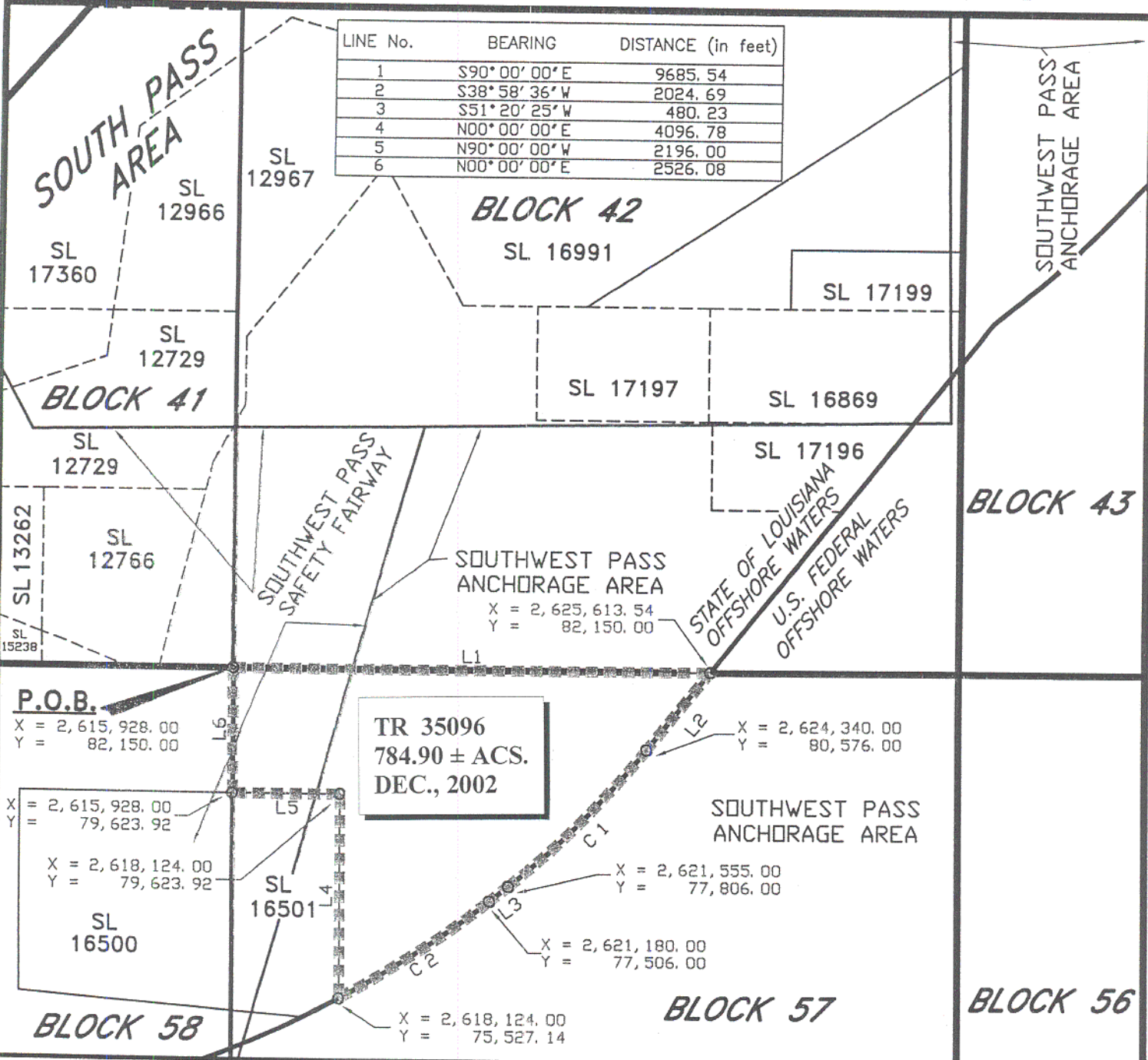
NOTE: The State of Louisiana does hereby reserve, and this lease shall be subject to, the imprescriptible right of surface use in the nature of a servitude in favor of the Department of Natural Resources, including its Offices and Commissions, for the sole purpose of implementing, constructing, servicing and maintaining approved coastal zone management and/or restoration projects. Utilization of any and all rights derived under this lease by the mineral lessee, its agents, successors or assigns, shall not interfere with nor hinder the reasonable surface use by the Department of Natural Resources, its Offices or Commissions, as herein above reserved.

Applicant: Robert A. Schroeder, Inc.

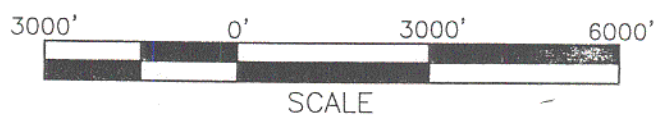
Bidder	Cash Payment	Price / Acre	Rental	Oil	Gas	Other

CURVE No.	DELTA	RADIUS	ARC LENGTH	TANGENT	CHORD
1	12° 21' 44"	18240.60	3935.62	1975.48	3927.99 S45° 09' 17" W
2	11° 27' 18"	18240.60	3646.82	1829.51	3640.75 S57° 04' 32" W

LINE No.	BEARING	DISTANCE (in feet)
1	S90° 00' 00" E	9685.54
2	S38° 58' 36" W	2024.69
3	S51° 20' 25" W	480.23
4	N00° 00' 00" E	4096.78
5	N90° 00' 00" W	2196.00
6	N00° 00' 00" E	2526.08



BLOCK 57
SOUTH PASS AREA
PLAQUEMINES PARISH, LOUISIANA
SCALE 1" = 3000'



ALL COORDINATES, BEARINGS AND DISTANCES ARE GRID, AND ARE ON THE LOUISIANA LAMBERT PLANE COORDINATE SYSTEM, SOUTH ZONE, 1927 NORTH AMERICAN DATUM.

TRACT 35097 - Portion of Block 45, Breton Sound Area, Plaquemines Parish, Louisiana

That portion of Block 45, Breton Sound Area, Plaquemines Parish, Louisiana, belonging to the State of Louisiana and not presently under mineral lease on December 11, 2002, being more fully described as follows: Beginning at the Southwest corner of Block 45, Breton Sound Area, having Coordinates of X = 2,679,600.00 and Y = 292,830.00; thence North 1,813.81 feet along the West line of said Block 45 to a point having Coordinates of X = 2,679,600.00 and Y = 294,643.81; thence Northeasterly on a straight line to a point having Coordinates of X = 2,680,880 and Y = 294,918; thence Northeasterly on a straight line to a point having Coordinates of X = 2,683,264 and Y = 296,069; thence Northeasterly on a straight line to a point having Coordinates of X = 2,685,058 and Y = 297,573; thence Northeasterly on a straight line to a point having Coordinates of X = 2,687,014 and Y = 300,054; thence Northeasterly on a straight line to a point having Coordinates of X = 2,687,610 and Y = 301,648; thence Northeasterly on a straight line to a point on the South line of State Lease No. 2001, as amended, having Coordinates of X = 2,687,625.35 and Y = 301,705.00; thence along the boundary of said State Lease No. 2201 the following courses: East 4,724.65 feet and North 2,925.00 feet to the Northeast corner of said State Lease No. 2201, also being the Southeast corner of State Lease No. 1237, as amended, having Coordinates of X = 2,692,350.00 and Y = 304,630.00; thence North 2,950.00 feet along the East line of said State Lease No. 1237 to its Northeast corner, also being a point on the North line of said Block 45 having Coordinates of X = 2,692,350.00 and Y = 307,580.00; thence East 2,000.00 feet along the North line of said Block 45 to its Northeast corner having Coordinates of X = 2,694,350.00 and Y = 307,580.00; thence South 7,900.00 feet along the East line of said Block 45 to a point, also being the North corner of State Lease No. 16735 having Coordinates of X = 2,694,350.00 and Y = 299,680.00; thence South 29 degrees 33 minutes 37 seconds West 3,851.30 feet along the West line of said State Lease No. 16735 to its Southwest corner, also being a point on the North line of State Lease No. 15683 having Coordinates of X = 2,692,450.00 and Y = 296,330.00; thence along the boundary of said State Lease No. 15683 the following courses: West 850.00 feet and South 50 degrees 31 minutes 39 seconds West 5,505.68 feet to the Southwest corner of said State Lease No. 15683, also being a point on the South line of said Block 45 having Coordinates of X = 2,687,350.00 and Y = 292,830.00; thence West 7,750.00 feet along the South line of said Block 45 to the point of beginning, containing approximately **1,924.08 acres**, all as more particularly outlined on a plat on file in the Office of Mineral Resources, Department of Natural Resources, as provided by the applicant. All bearings, distances and coordinates are based on Louisiana Coordinate System of 1927, (North or South Zone).

NOTE: The above description of the Tract nominated for lease has been provided and corrected, where required, exclusively by the nomination party. Any mineral lease selected from this Tract and awarded by the Louisiana State Mineral Board shall be without warranty of any kind, either express, implied, or statutory, including, but not limited to, the

implied warranties of merchantability and fitness for a particular purpose. Should the mineral lease awarded by the Louisiana State Mineral Board be subsequently modified, cancelled or abrogated due to the existence of conflicting leases, operating agreements, private claims or other future obligations or conditions which may affect all or any portion of the leased Tract, it shall not relieve the Lessee of the obligation to pay any bonus due thereon to the Louisiana State Mineral Board, nor shall the Louisiana State Mineral Board be obligated to refund any consideration paid by the Lessor prior to such modification, cancellation, or abrogation, including, but not limited to, bonuses, rentals and royalties.

NOTE: It appears, according to our records, that a portion of this Tract is located within the restrictive safety fairway area as set out by the Corps of Engineers, U.S. Army and/or the restrictive anchorage area as set out by the U.S. Coast Guard.

NOTE: The State of Louisiana does hereby reserve, and this lease shall be subject to, the imprescriptible right of surface use in the nature of a servitude in favor of the Department of Natural Resources, including its Offices and Commissions, for the sole purpose of implementing, constructing, servicing and maintaining approved coastal zone management and/or restoration projects. Utilization of any and all rights derived under this lease by the mineral lessee, its agents, successors or assigns, shall not interfere with nor hinder the reasonable surface use by the Department of Natural Resources, its Offices or Commissions, as herein above reserved.

Applicant: Mandy L. Trahan

Bidder	Cash Payment	Price / Acre	Rental	Oil	Gas	Other

BIK. 35

BIK. 36

⁶¹
BIK. 37

SL 1237

SL 2001

SL 16893

BIK. 46

BIK. 45

TR 35097
1,924.08 ± ACS.
DEC., 2002

BIK. 44

SL 17485

SL 16735

SL 16736

SL 15683

P. O. B.
X=2,679,600.00
Y= 292,830.00

BRETON SOUND AREA

SL 16738

SL 12806, As Amended

BIK. 51

BIK. 52

BIK. 53

SL 16737

GULF OF MEXICO

Plaquemines Parish, Louisiana

3000' 0' 3000'

NAD 27 — LAMBERT LA. SOUTH ZONE

TRACT 35098 - Portion of Block 52, Breton Sound Area, Plaquemines Parish, Louisiana

That portion of Block 52, Breton Sound Area, Plaquemines Parish, Louisiana, belonging to the State of Louisiana and not presently under mineral lease on December 11, 2002, being more fully described as follows: Beginning at the Northwest corner of Block 52, Breton Sound Area, having Coordinates of X = 2,679,600.00 and Y = 292,830.00; thence East 7,750.00 feet along the North line of said Block 52 to a point, also being the Northwest corner of State Lease No. 12806, as amended, having Coordinates of X = 2,687,350.00 and Y = 292,830.00; thence along the boundary of said State Lease No. 12806 the following courses: South 50 degrees 32 minutes 23 seconds West 5,310.43 feet, South 1,200.00 feet, South 79 degrees 02 minutes 24 seconds East 2,050.87 feet and Southeasterly on an arc having a radius of 6,073.33 feet and a chord bearing of South 88 degrees 19 minutes 20 seconds East 1,712.27 feet to a point on the South boundary line of said State Lease No. 12806 having Coordinates of X = 2,686,975.00 and Y = 287,814.95; thence South 9,734.95 feet to a point on the South line of said Block 52 having Coordinates of X = 2,686,975.00 and Y = 278,080.00; thence West 7,375.00 feet along the South line of said Block 52 to its Southwest corner having Coordinates of X = 2,679,600.00 and Y = 278,080.00; thence North 14,750.00 feet along the West line of said Block 52 to the point of beginning, containing approximately **2,237.97 acres**, all as more particularly outlined on a plat on file in the Office of Mineral Resources, Department of Natural Resources, as provided by the applicant. All bearings, distances and coordinates are based on Louisiana Coordinate System of 1927, (North or South Zone).

NOTE: The above description of the Tract nominated for lease has been provided and corrected, where required, exclusively by the nomination party. Any mineral lease selected from this Tract and awarded by the Louisiana State Mineral Board shall be without warranty of any kind, either express, implied, or statutory, including, but not limited to, the implied warranties of merchantability and fitness for a particular purpose. Should the mineral lease awarded by the Louisiana State Mineral Board be subsequently modified, cancelled or abrogated due to the existence of conflicting leases, operating agreements, private claims or other future obligations or conditions which may affect all or any portion of the leased Tract, it shall not relieve the Lessee of the obligation to pay any bonus due thereon to the Louisiana State Mineral Board, nor shall the Louisiana State Mineral Board be obligated to refund any consideration paid by the Lessor prior to such modification, cancellation, or abrogation, including, but not limited to, bonuses, rentals and royalties.

NOTE: The State of Louisiana does hereby reserve, and this lease shall be subject to, the imprescriptible right of surface use in the nature of a servitude in favor of the Department of Natural Resources, including its Offices and Commissions, for the sole purpose of implementing, constructing, servicing and maintaining approved coastal zone management and/or restoration projects. Utilization of any and all rights derived under this lease by the mineral lessee, its agents, successors or assigns,

shall not interfere with nor hinder the reasonable surface use by the Department of Natural Resources, its Offices or Commissions, as herein above reserved.

Applicant: Mandy L. Trahan

Bidder	Cash Payment	Price / Acre	Rental	Oil	Gas	Other

BIK. 46

BIK. 45

64

SL 16736
BIK. 44

SL 15683

P. O. B.
X=2,679,600.00
Y= 292,830.00

SL 16738

SL 12806, As Amended

SL 16737

BIK. 51

TR 35098
2,237.97 ± ACS.
DEC., 2002

SL 3770
BIK. 53

BIK. 52

SL 17244

BRETON SOUND AREA

SL 17052

SL 17053

MAIN PASS AREA, REVISED

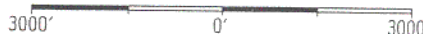
GULF OF MEXICO

BIK. 45

BIK. 44

NAD 27 LAMBERT LA. SOUTH ZONE

Plaquemines Parish, Louisiana



TRACT 35099 - Portion of Block 52, Breton Sound Area, Plaquemines Parish, Louisiana

That portion of Block 52, Breton Sound Area, Plaquemines Parish, Louisiana, belonging to the State of Louisiana and not presently under mineral lease on December 11, 2002, being more fully described as follows: Beginning at the Southeast corner of Block 52, Breton Sound Area, having Coordinates of X = 2,694,350.00 and Y = 278,080.00; thence West 7,375.00 feet along the South line of said Block 52 to a point having Coordinates of X = 2,686,975.00 and Y = 278,080.00; thence North 9,734.95 feet to a point on the South boundary line of State Lease No. 12806, as amended, having Coordinates of X = 2,686,975.00 and Y = 287,814.95; thence along the boundary of said State Lease No. 12806 the following courses: Northeasterly on an arc having a radius of 6,073.33 feet and a chord bearing of North 80 degrees 48 minutes 33 seconds East 585.89 feet, North 78 degrees 45 minutes 57 seconds East 1,028.18 feet, Northeasterly on an arc having a radius of 10,021.87 feet and a chord bearing of North 70 degrees 31 minutes 38 seconds East 3,635.07 feet and North 60 degrees 17 minutes 03 seconds East 523.59 feet to a point on the South boundary line of said State Lease No. 12806, also being the Northwest corner of State Lease No. 16737 having Coordinates of X = 2,692,443.73 and Y = 289,580.18; thence along the boundary of said State Lease No. 16737 the following courses: South 07 degrees 07 minutes 30 seconds East 3,275.47 feet and East 1,500.00 feet to the Southeast corner of said State Lease No. 16737, also being a point on the East line of said Block 52 having Coordinates of X = 2,694,350.00 and Y = 286,330.00; thence South 8,250.00 feet along the East line of said Block 52 to the point of beginning, containing approximately **1,682.01 acres**, all as more particularly outlined on a plat on file in the Office of Mineral Resources, Department of Natural Resources, as provided by the applicant. All bearings, distances and coordinates are based on Louisiana Coordinate System of 1927, (North or South Zone).

NOTE: The above description of the Tract nominated for lease has been provided and corrected, where required, exclusively by the nomination party. Any mineral lease selected from this Tract and awarded by the Louisiana State Mineral Board shall be without warranty of any kind, either express, implied, or statutory, including, but not limited to, the implied warranties of merchantability and fitness for a particular purpose. Should the mineral lease awarded by the Louisiana State Mineral Board be subsequently modified, cancelled or abrogated due to the existence of conflicting leases, operating agreements, private claims or other future obligations or conditions which may affect all or any portion of the leased Tract, it shall not relieve the Lessee of the obligation to pay any bonus due thereon to the Louisiana State Mineral Board, nor shall the Louisiana State Mineral Board be obligated to refund any consideration paid by the Lessor prior to such modification, cancellation, or abrogation, including, but not limited to, bonuses, rentals and royalties.

NOTE: The State of Louisiana does hereby reserve, and this lease shall be subject to, the imprescriptible right of surface use in the nature of a

servitude in favor of the Department of Natural Resources, including its Offices and Commissions, for the sole purpose of implementing, constructing, servicing and maintaining approved coastal zone management and/or restoration projects. Utilization of any and all rights derived under this lease by the mineral lessee, its agents, successors or assigns, shall not interfere with nor hinder the reasonable surface use by the Department of Natural Resources, its Offices or Commissions, as herein above reserved.

Applicant: Mandy L. Trahan

Bidder	Cash Payment	Price / Acre	Rental	Oil	Gas	Other

BIK. 46

BIK. 45

SL 15683

⁴⁷
SL 16736
BIK. 44

SL 16738

SL 12806, As Amended

SL 16737

BIK. 51

BIK. 52

SL 3770
BIK. 53

TR 35099
1,682.01± ACS.
DEC., 2002

SL 17244

BRETON SOUND AREA

P. O. B.
X=2,694,350.00
Y= 278,080.00

SL 17052

SL 17053

MAIN PASS AREA, REVISED

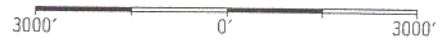
GULF OF MEXICO

BIK. 45

BIK. 44

NAD 27
LAMBERT LA. SOUTH ZONE

Plaquemines Parish, Louisiana



TRACT 35100 - Portion of Block 45, Main Pass Area, Revised, Plaquemines Parish, Louisiana

That portion of Block 45, Main Pass Area, Revised, Plaquemines Parish, Louisiana, belonging to the State of Louisiana and not presently under mineral lease on December 11, 2002, being more fully described as follows: Beginning at the Northeast corner of Block 45, Main Pass Area, Revised, having Coordinates of X = 2,694,350.00 and Y = 278,080.00; thence South 7,375.00 feet along the East line of said Block 45 to a point having Coordinates of X = 2,694,350.00 and Y = 270,705.00; thence West 14,750.00 feet to a point on the West line of said Block 45 having Coordinate of X = 2,679,600.00 and Y = 270,705.00; thence North 3,275.00 feet along the West line of said Block 45 to a point, also being the Southwest corner of State Lease No. 17053 having Coordinates of X = 2,679,600.00 and Y = 273,980.00; thence along the boundary of said State Lease No. 17053 the following courses: East 1,180.00 feet and North 4,100.00 feet to the Northeast corner of said State Lease No. 17053, also being a point on the North line of said Block 45 having Coordinates of X = 2,680,780.00 and Y = 278,080.00; thence East 13,570.00 feet along the North line of said Block 45 to the point of beginning, containing approximately **2,386.21 acres**, all as more particularly outlined on a plat on file in the Office of Mineral Resources, Department of Natural Resources, as provided by the applicant. All bearings, distances and coordinates are based on Louisiana Coordinate System of 1927, (North or South Zone).

NOTE: The above description of the Tract nominated for lease has been provided and corrected, where required, exclusively by the nomination party. Any mineral lease selected from this Tract and awarded by the Louisiana State Mineral Board shall be without warranty of any kind, either express, implied, or statutory, including, but not limited to, the implied warranties of merchantability and fitness for a particular purpose. Should the mineral lease awarded by the Louisiana State Mineral Board be subsequently modified, cancelled or abrogated due to the existence of conflicting leases, operating agreements, private claims or other future obligations or conditions which may affect all or any portion of the leased Tract, it shall not relieve the Lessee of the obligation to pay any bonus due thereon to the Louisiana State Mineral Board, nor shall the Louisiana State Mineral Board be obligated to refund any consideration paid by the Lessor prior to such modification, cancellation, or abrogation, including, but not limited to, bonuses, rentals and royalties.

NOTE: The State of Louisiana does hereby reserve, and this lease shall be subject to, the imprescriptible right of surface use in the nature of a servitude in favor of the Department of Natural Resources, including its Offices and Commissions, for the sole purpose of implementing, constructing, servicing and maintaining approved coastal zone management and/or restoration projects. Utilization of any and all rights derived under this lease by the mineral lessee, its agents, successors or assigns, shall not interfere with nor hinder the reasonable surface use by the Department of Natural Resources, its Offices or Commissions, as herein above reserved.

Applicant: Mandy L. Trahan

Bidder	Cash Payment	Price / Acre	Rental	Oil	Gas	Other

BIK. 51

BIK. 52

BIK. 53

SL 17244

BRETON SOUND AREA

P. O. B.
X=2,694,350.00
Y= 278,080.00

SL 17052

MAIN PASS AREA, REVISED

SL 17053

TR 35100
2,386.21 ± ACS.
DEC., 2002

SL 2726

BIK. 46

BIK. 45

BIK. 44

SL 2726

GULF OF MEXICO

NAD 27
LAMBERT LA. SOUTH ZONE

Plaquemines Parish, Louisiana

3000' 0' 3000'

TRACT 35101 - Portion of Block 37, Breton Sound Area, Plaquemines Parish, Louisiana

That portion of Block 37, Breton Sound Area, Plaquemines Parish, Louisiana, belonging to the State of Louisiana and not presently under mineral lease on December 11, 2002, being more fully described as follows: Beginning at the Southeast corner of Block 37, Breton Sound Area, having Coordinates of X = 2,709,100.00 and Y = 307,580.00; thence West 14,750.00 feet along the South line of said Block 37 to its Southwest corner having Coordinates of X = 2,694,350.00 and Y = 307,580.00; thence North 2,912.12 feet along the West line of said Block 37 to a point having Coordinates of X = 2,694,350.00 and Y = 310,492.12; thence Northeasterly on a straight line to a point having Coordinates of X = 2,707,350.47 and Y = 314,955.00; thence Easterly on a straight line to a point on the East line of said Block 37 having Coordinates of X = 2,709,100.00 and Y = 314,955.00; thence South 7,375.00 feet along the East line of said Block 37 to the point of beginning, containing approximately **1,831.30 acres**, all as more particularly outlined on a plat on file in the Office of Mineral Resources, Department of Natural Resources, as provided by the applicant. All bearings, distances and coordinates are based on Louisiana Coordinate System of 1927, (North or South Zone).

NOTE: The above description of the Tract nominated for lease has been provided and corrected, where required, exclusively by the nomination party. Any mineral lease selected from this Tract and awarded by the Louisiana State Mineral Board shall be without warranty of any kind, either express, implied, or statutory, including, but not limited to, the implied warranties of merchantability and fitness for a particular purpose. Should the mineral lease awarded by the Louisiana State Mineral Board be subsequently modified, cancelled or abrogated due to the existence of conflicting leases, operating agreements, private claims or other future obligations or conditions which may affect all or any portion of the leased Tract, it shall not relieve the Lessee of the obligation to pay any bonus due thereon to the Louisiana State Mineral Board, nor shall the Louisiana State Mineral Board be obligated to refund any consideration paid by the Lessor prior to such modification, cancellation, or abrogation, including, but not limited to, bonuses, rentals and royalties.

NOTE: It appears, according to our records, that a portion of this Tract is located within the restrictive safety fairway area as set out by the Corps of Engineers, U.S. Army and/or the restrictive anchorage area as set out by the U.S. Coast Guard.

NOTE: The State of Louisiana does hereby reserve, and this lease shall be subject to, the imprescriptible right of surface use in the nature of a servitude in favor of the Department of Natural Resources, including its Offices and Commissions, for the sole purpose of implementing, constructing, servicing and maintaining approved coastal zone management and/or restoration projects. Utilization of any and all rights derived under this lease by the mineral lessee, its agents, successors or assigns, shall not interfere with nor hinder the reasonable surface use by the

Department of Natural Resources, its Offices or Commissions, as herein above reserved.

Applicant: Mandy L. Trahan

Bidder	Cash Payment	Price / Acre	Rental	Oil	Gas	Other

73

SL 1230,
As Amended

SL 4409, As Amended

Bik. 36

Bik. 37

Bik. 38

TR 35101
1,831.30 ± ACS.
DEC., 2002

P. O. B.
X=2,709,100.00
Y= 307,580.00

Bik. 44

Bik. 45

Bik. 43

BRETON SOUND AREA
GULF OF MEXICO

NAD 27
LAMBERT LA. SOUTH ZONE

Plaquemines Parish, Louisiana



TRACT 35102 - Portion of Block 44, Breton Sound Area, Plaquemines Parish, Louisiana

That portion of Block 44, Breton Sound Area, Plaquemines Parish, Louisiana, belonging to the State of Louisiana and not presently under mineral lease on December 11, 2002, being more fully described as follows: Beginning at the Northeast corner of Block 44, Breton Sound Area, having Coordinates of X = 2,709,100.00 and Y = 307,580.00; thence South 7,375.00 feet along the East line of said Block 44 to a point having Coordinates of X = 2,709,100.00 and Y = 300,205.00; thence West 14,750.00 feet to a point on the West line of said Block 44 having Coordinates of X = 2,694,350.00 and Y = 300,205.00; thence North 7,375.00 feet along the West line of said Block 44 to its Northwest corner having Coordinates of X = 2,694,350.00 and Y = 307,580.00; thence East 14,750.00 feet along the North line of said Block 44 to the point of beginning, containing approximately **2,497.27 acres**, all as more particularly outlined on a plat on file in the Office of Mineral Resources, Department of Natural Resources, as provided by the applicant. All bearings, distances and coordinates are based on Louisiana Coordinate System of 1927, (North or South Zone).

NOTE: The above description of the Tract nominated for lease has been provided and corrected, where required, exclusively by the nomination party. Any mineral lease selected from this Tract and awarded by the Louisiana State Mineral Board shall be without warranty of any kind, either express, implied, or statutory, including, but not limited to, the implied warranties of merchantability and fitness for a particular purpose. Should the mineral lease awarded by the Louisiana State Mineral Board be subsequently modified, cancelled or abrogated due to the existence of conflicting leases, operating agreements, private claims or other future obligations or conditions which may affect all or any portion of the leased Tract, it shall not relieve the Lessee of the obligation to pay any bonus due thereon to the Louisiana State Mineral Board, nor shall the Louisiana State Mineral Board be obligated to refund any consideration paid by the Lessor prior to such modification, cancellation, or abrogation, including, but not limited to, bonuses, rentals and royalties.

NOTE: It appears, according to our records, that a portion of this Tract is located within the restrictive safety fairway area as set out by the Corps of Engineers, U.S. Army and/or the restrictive anchorage area as set out by the U.S. Coast Guard.

NOTE: The State of Louisiana does hereby reserve, and this lease shall be subject to, the imprescriptible right of surface use in the nature of a servitude in favor of the Department of Natural Resources, including its Offices and Commissions, for the sole purpose of implementing, constructing, servicing and maintaining approved coastal zone management and/or restoration projects. Utilization of any and all rights derived under this lease by the mineral lessee, its agents, successors or assigns, shall not interfere with nor hinder the reasonable surface use by the Department of Natural Resources, its Offices or Commissions, as herein above reserved.

Applicant: Mandy L. Trahan

Bidder	Cash Payment	Price / Acre	Rental	Oil	Gas	Other

76

BIK. 36

BIK. 37

P. O. B.
X=2,709,100.00
Y= 307,580.00

BIK. 38

TR 35102
2,497.27 ± ACS.
DEC., 2002

BIK. 45

BIK. 43

BIK. 44

SL 16735

SL 16736

SL 15683

SL 16738

BIK. 52

BIK. 53

BIK. 54

BRETON SOUND AREA

GULF OF MEXICO

NAD 27
LAMBERT L.A. SOUTH ZONE

Plaquemines Parish, Louisiana



TRACT 35103 - Portion of Block 44, Breton Sound Area, Plaquemines Parish, Louisiana

That portion of Block 44, Breton Sound Area, Plaquemines Parish, Louisiana, belonging to the State of Louisiana and not presently under mineral lease on December 11, 2002, being more fully described as follows: Beginning at a point on the East line of Block 44, Breton Sound Area, having Coordinates of X = 2,709,100.00 and Y = 300,205.00; thence South 3,934.92 feet along the East line of said Block 44 to a point having Coordinates of X = 2,709,100.00 and Y = 296,270.08; thence Southwesterly on a straight line to a point having Coordinates of X = 2,704,480 and Y = 294,684; thence Southwesterly on a straight line to a point having Coordinates of X = 2,704,099 and Y = 293,666; thence Southwesterly on an arc having a radius of 18,240.60 feet and a center at X = 2,687,014 and Y = 300,054 to a point on the South line of said Block 44 having Coordinates of X = 2,703,763.13 and Y = 292,830.00; thence West 4,200.09 feet along the South line of said Block 44 to the most Southerly Southeast corner of State Lease No. 16736 having Coordinates of X = 2,699,563.04 and Y = 292,830.00; thence along the boundary of said State Lease No. 16736 the following courses: North 43 degrees 43 minutes 37 seconds East 3,127.73 feet, North 1,239.77 feet, West 4,475.00 feet, North 2,500.00 feet, North 46 degrees 23 minutes 50 seconds West 1,450.00 feet and South 85 degrees 21 minutes 52 seconds West 1,856.07 feet to the Northwest corner of said State Lease No. 16736, also being a point on the West line of said Block 44 having Coordinates of X = 2,694,350.00 and Y = 299,680.00; thence North 525.00 feet along the West line of said Block 44 to a point having Coordinates of X = 2,694,350.00 and Y = 300,205.00; thence East 14,750.00 feet to the point of beginning, containing approximately **1,447.36 acres**, all as more particularly outlined on a plat on file in the Office of Mineral Resources, Department of Natural Resources, as provided by the applicant. All bearings, distances and coordinates are based on Louisiana Coordinate System of 1927, (North or South Zone).

NOTE: The above description of the Tract nominated for lease has been provided and corrected, where required, exclusively by the nomination party. Any mineral lease selected from this Tract and awarded by the Louisiana State Mineral Board shall be without warranty of any kind, either express, implied, or statutory, including, but not limited to, the implied warranties of merchantability and fitness for a particular purpose. Should the mineral lease awarded by the Louisiana State Mineral Board be subsequently modified, cancelled or abrogated due to the existence of conflicting leases, operating agreements, private claims or other future obligations or conditions which may affect all or any portion of the leased Tract, it shall not relieve the Lessee of the obligation to pay any bonus due thereon to the Louisiana State Mineral Board, nor shall the Louisiana State Mineral Board be obligated to refund any consideration paid by the Lessor prior to such modification, cancellation, or abrogation, including, but not limited to, bonuses, rentals and royalties.

NOTE: It appears, according to our records, that a portion of this Tract is located within the restrictive safety fairway area as set out by the

Corps of Engineers, U.S. Army and/or the restrictive anchorage area as set out by the U.S. Coast Guard.

NOTE: The State of Louisiana does hereby reserve, and this lease shall be subject to, the imprescriptible right of surface use in the nature of a servitude in favor of the Department of Natural Resources, including its Offices and Commissions, for the sole purpose of implementing, constructing, servicing and maintaining approved coastal zone management and/or restoration projects. Utilization of any and all rights derived under this lease by the mineral lessee, its agents, successors or assigns, shall not interfere with nor hinder the reasonable surface use by the Department of Natural Resources, its Offices or Commissions, as herein above reserved.

Applicant: Mandy L. Trahan

Bidder	Cash Payment	Price / Acre	Rental	Oil	Gas	Other

79

BIK. 36

BIK. 37

BIK. 38

BIK. 45

BIK. 44

BIK. 43

TR 35103
1,447.36 ± ACS.
DEC., 2002

P. O. B.
X=2,709,100.00
Y= 300,205.00

SL 16735

SL 15683

SL 16736

SL 16738

BIK. 52

BIK. 53

BIK. 54

BRETON SOUND AREA
GULF OF MEXICO

NAD 27
LAMBERT LA. SOUTH ZONE

Plaquemines Parish, Louisiana

3000' 0' 3000'

TRACT 35104 - Portion of Block 53, Breton Sound Area, Plaquemines Parish, Louisiana

That portion of Block 53, Breton Sound Area, Plaquemines Parish, Louisiana, belonging to the State of Louisiana and not presently under mineral lease on December 11, 2002, being more fully described as follows: Beginning at a point on the North line of Block 53, Breton Sound Area, also being the Northeast corner of State Lease No. 16738 having Coordinates of X = 2,699,563.04 and Y = 292,830.00; thence East 4,200.09 feet along the North line of said Block 53 to a point having Coordinates of X = 2,703,763.13 and Y = 292,830.00; thence Southwesterly on an arc having a radius of 18,240.60 feet and a center at X = 2,687,014 and Y = 300,054 to a point having Coordinates of X = 2,701,338 and Y = 288,761; thence Southwesterly on a straight line to the most Easterly Northeast corner of State Lease No. 3770, as amended, having Coordinates of X = 2,700,150.00 and Y = 287,254.14; thence along the boundary of said State Lease No. 3770 the following courses: West 5,000.00 feet, North 46 degrees 44 minutes 26 seconds East 5,217.93 feet and West 1,300.00 feet to a point on the North line of said State Lease No. 3770, also being the Southeast corner of said State Lease No. 16738 having Coordinates of X = 2,697,650.00 and Y = 290,830.00; thence North 43 degrees 43 minutes 37 seconds East 2,767.62 feet along the East line of said State Lease No. 16738 to the point of beginning, containing approximately **581.34 acres, LESS AND EXCEPT** that portion thereof, if any, lying seaward of the line three nautical miles from the coast line of Louisiana, as said three mile line has been decreed by the Supreme Court of the United States, as determined by a Special Master appointed therein, in litigation styled **United States v. State of Louisiana et al No. 9 Original**, in 1975, all as more particularly outlined on a plat on file in the Office of Mineral Resources, Department of Natural Resources, as provided by the applicant. All bearings, distances and coordinates are based on Louisiana Coordinate System of 1927, (North or South Zone).

NOTE: The above description of the Tract nominated for lease has been provided and corrected, where required, exclusively by the nomination party. Any mineral lease selected from this Tract and awarded by the Louisiana State Mineral Board shall be without warranty of any kind, either express, implied, or statutory, including, but not limited to, the implied warranties of merchantability and fitness for a particular purpose. Should the mineral lease awarded by the Louisiana State Mineral Board be subsequently modified, cancelled or abrogated due to the existence of conflicting leases, operating agreements, private claims or other future obligations or conditions which may affect all or any portion of the leased Tract, it shall not relieve the Lessee of the obligation to pay any bonus due thereon to the Louisiana State Mineral Board, nor shall the Louisiana State Mineral Board be obligated to refund any consideration paid by the Lessor prior to such modification, cancellation, or abrogation, including, but not limited to, bonuses, rentals and royalties.

NOTE: The State of Louisiana does hereby reserve, and this lease shall be subject to, the imprescriptible right of surface use in the nature of a

servitude in favor of the Department of Natural Resources, including its Offices and Commissions, for the sole purpose of implementing, constructing, servicing and maintaining approved coastal zone management and/or restoration projects. Utilization of any and all rights derived under this lease by the mineral lessee, its agents, successors or assigns, shall not interfere with nor hinder the reasonable surface use by the Department of Natural Resources, its Offices or Commissions, as herein above reserved.

Applicant: Mandy L. Trahan

Bidder	Cash Payment	Price / Acre	Rental	Oil	Gas	Other

82

Bik. 43

Bik. 45

Bik. 44

SL 16735

SL 15683

SL 16736

SL 12806,
As Amended

SL 16738

P. O. B.
X=2,699,563.04
Y= 292,830.00

TR 35104
581.34 ± ACS.
DEC., 2002

SL 16737

LA
US

SL 3770

Bik. 53

Bik. 52

Bik. 54

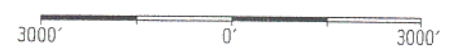
BRETON SOUND AREA

MAIN PASS AREA, REVISED

GULF OF MEXICO

NAD 27
LAMBERT LA. SOUTH ZONE

Plaquemines Parish, Louisiana



TRACT 35105 - Portion of Block 53, Breton Sound Area, Plaquemines Parish, Louisiana

That portion of Block 53, Breton Sound Area, Plaquemines Parish, Louisiana, belonging to the State of Louisiana and not presently under mineral lease on December 11, 2002, being more fully described as follows: Beginning at the Southwest corner of Block 53, Breton Sound Area, having Coordinates of X = 2,694,350.00 and Y = 278,080.00; thence North 3,900.00 feet along the West line of said Block 53 to a point, also being the South corner of State Lease No. 3770, as amended, having Coordinates of X = 2,694,350.00 and Y = 281,980.00; thence along the boundary of said State Lease No. 3770 the following courses: North 58 degrees 20 minutes 55 seconds East 1,715.11 feet and North 51 degrees 27 minutes 54 seconds East 2,078.68 feet to a point on the boundary of said State Lease No. 3770 having Coordinates of X = 2,697,436.00 and Y = 284,175.00; thence Southeasterly on a straight line to a point on the South line of said Block 53 having Coordinates of X = 2,698,087.39 and Y = 278,080.00; thence West 3,737.39 feet along the South line of said Block 53 to the point of beginning, **LESS AND EXCEPT** that portion of State Lease No. 3770, as amended, that may lie within the above described tract, containing approximately **394.71 acres**, **LESS AND EXCEPT** that portion thereof, if any, lying seaward of the line three nautical miles from the coast line of Louisiana, as said three mile line has been decreed by the Supreme Court of the United States, as determined by a Special Master appointed therein, in litigation styled **United States v. State of Louisiana et al No. 9 Original**, in 1975, all as more particularly outlined on a plat on file in the Office of Mineral Resources, Department of Natural Resources, as provided by the applicant. All bearings, distances and coordinates are based on Louisiana Coordinate System of 1927, (North or South Zone).

NOTE: The above description of the Tract nominated for lease has been provided and corrected, where required, exclusively by the nomination party. Any mineral lease selected from this Tract and awarded by the Louisiana State Mineral Board shall be without warranty of any kind, either express, implied, or statutory, including, but not limited to, the implied warranties of merchantability and fitness for a particular purpose. Should the mineral lease awarded by the Louisiana State Mineral Board be subsequently modified, cancelled or abrogated due to the existence of conflicting leases, operating agreements, private claims or other future obligations or conditions which may affect all or any portion of the leased Tract, it shall not relieve the Lessee of the obligation to pay any bonus due thereon to the Louisiana State Mineral Board, nor shall the Louisiana State Mineral Board be obligated to refund any consideration paid by the Lessor prior to such modification, cancellation, or abrogation, including, but not limited to, bonuses, rentals and royalties.

NOTE: The State of Louisiana does hereby reserve, and this lease shall be subject to, the imprescriptible right of surface use in the nature of a servitude in favor of the Department of Natural Resources, including its Offices and Commissions, for the sole purpose of implementing, constructing, servicing and maintaining approved coastal zone management

and/or restoration projects. Utilization of any and all rights derived under this lease by the mineral lessee, its agents, successors or assigns, shall not interfere with nor hinder the reasonable surface use by the Department of Natural Resources, its Offices or Commissions, as herein above reserved.

Applicant: Mandy L. Trahan

Bidder	Cash Payment	Price / Acre	Rental	Oil	Gas	Other

SL 12806, As Amended

SL 16738

SL 16737

SL 3770

BIK. 52

BIK. 53

LA
US

TR 35105
394.71 ± ACS.
DEC., 2002

P. O. B.
X=2,694,350.00
Y= 278,080.00

BRETON SOUND AREA

MAIN PASS AREA, REVISED

BIK. 45

BIK. 44

GULF OF MEXICO

NAD 27
LAMBERT LA. SOUTH ZONE

Plaquemines Parish, Louisiana



TRACT 35106 - Portion of Block 44, Main Pass Area, Revised, Plaquemines Parish, Louisiana

That portion of Block 44, Main Pass Area, Revised, Plaquemines Parish, Louisiana, belonging to the State of Louisiana and not presently under mineral lease on December 11, 2002, being more fully described as follows: Beginning at the Northwest corner of Block 44, Main Pass Area, Revised, having Coordinates of X = 2,694,350.00 and Y = 278,080.00; thence East 3,737.39 feet along the North line of said Block 44 to a point having Coordinates of X = 2,698,087.39 and Y = 278,080.00; thence Southeasterly on a straight line to a point having Coordinates of X = 2,698,875.58 and Y = 270,705.00; thence West 4,525.58 feet to a point on the West line of said Block 44 having Coordinates of X = 2,694,350.00 and Y = 270,705.00; thence North 7,375.00 feet along the West line of said Block 44 to the point of beginning, containing approximately **699.49 acres, LESS AND EXCEPT** that portion thereof, if any, lying seaward of the line three nautical miles from the coast line of Louisiana, as said three mile line has been decreed by the Supreme Court of the United States, as determined by a Special Master appointed therein, in litigation styled **United States v. State of Louisiana et al No. 9 Original**, in 1975, all as more particularly outlined on a plat on file in the Office of Mineral Resources, Department of Natural Resources, as provided by the applicant. All bearings, distances and coordinates are based on Louisiana Coordinate System of 1927, (North or South Zone).

NOTE: The above description of the Tract nominated for lease has been provided and corrected, where required, exclusively by the nomination party. Any mineral lease selected from this Tract and awarded by the Louisiana State Mineral Board shall be without warranty of any kind, either express, implied, or statutory, including, but not limited to, the implied warranties of merchantability and fitness for a particular purpose. Should the mineral lease awarded by the Louisiana State Mineral Board be subsequently modified, cancelled or abrogated due to the existence of conflicting leases, operating agreements, private claims or other future obligations or conditions which may affect all or any portion of the leased Tract, it shall not relieve the Lessee of the obligation to pay any bonus due thereon to the Louisiana State Mineral Board, nor shall the Louisiana State Mineral Board be obligated to refund any consideration paid by the Lessor prior to such modification, cancellation, or abrogation, including, but not limited to, bonuses, rentals and royalties.

NOTE: The State of Louisiana does hereby reserve, and this lease shall be subject to, the imprescriptible right of surface use in the nature of a servitude in favor of the Department of Natural Resources, including its Offices and Commissions, for the sole purpose of implementing, constructing, servicing and maintaining approved coastal zone management and/or restoration projects. Utilization of any and all rights derived under this lease by the mineral lessee, its agents, successors or assigns, shall not interfere with nor hinder the reasonable surface use by the Department of Natural Resources, its Offices or Commissions, as herein above reserved.

Applicant: Mandy L. Trahan

Bidder	Cash Payment	Price / Acre	Rental	Oil	Gas	Other

BIK. 52

SL 3770

BIK. 53

88

P. O. B.
X=2,694,350.00
Y= 278,080.00

LA
US

BRETON SOUND AREA

MAIN PASS AREA, REVISED

TR 35106
699.49 ± ACS.
DEC., 2002

BIK. 45

BIK. 44

GULF OF MEXICO

NAD 27
LAMBERT LA. SOUTH ZONE

Plaquemines Parish, Louisiana

3000' 0' 3000'

TRACT 35107 - Portion of Block 38, Breton Sound Area, Plaquemines Parish, Louisiana

That portion of Block 38, Breton Sound Area, Plaquemines Parish, Louisiana, belonging to the State of Louisiana and not presently under mineral lease on December 11, 2002, being more fully described as follows: Beginning at the Southwest corner of Block 38, Breton Sound Area, having Coordinates of X = 2,709,100.00 and Y = 307,580.00; thence North 7,375.00 feet along the West line of said Block 38 to a point having Coordinates of X = 2,709,100.00 and Y = 314,955.00; thence East 14,750.00 feet to a point on the East line of said Block 38 having Coordinates of X = 2,723,850.00 and Y = 314,955.00; thence South 7,375.00 feet along the East line of said Block 38 to its Southeast corner having Coordinates of X = 2,723,850.00 and Y = 307,580.00; thence West 14,750.00 feet along the South line of said Block 38 to the point of beginning, containing approximately **2,497.27 acres**, all as more particularly outlined on a plat on file in the Office of Mineral Resources, Department of Natural Resources, as provided by the applicant. All bearings, distances and coordinates are based on Louisiana Coordinate System of 1927, (North or South Zone).

NOTE: The above description of the Tract nominated for lease has been provided and corrected, where required, exclusively by the nomination party. Any mineral lease selected from this Tract and awarded by the Louisiana State Mineral Board shall be without warranty of any kind, either express, implied, or statutory, including, but not limited to, the implied warranties of merchantability and fitness for a particular purpose. Should the mineral lease awarded by the Louisiana State Mineral Board be subsequently modified, cancelled or abrogated due to the existence of conflicting leases, operating agreements, private claims or other future obligations or conditions which may affect all or any portion of the leased Tract, it shall not relieve the Lessee of the obligation to pay any bonus due thereon to the Louisiana State Mineral Board, nor shall the Louisiana State Mineral Board be obligated to refund any consideration paid by the Lessor prior to such modification, cancellation, or abrogation, including, but not limited to, bonuses, rentals and royalties.

NOTE: It appears, according to our records, that a portion of this Tract is located within the restrictive safety fairway area as set out by the Corps of Engineers, U.S. Army and/or the restrictive anchorage area as set out by the U.S. Coast Guard.

NOTE: The State of Louisiana does hereby reserve, and this lease shall be subject to, the imprescriptible right of surface use in the nature of a servitude in favor of the Department of Natural Resources, including its Offices and Commissions, for the sole purpose of implementing, constructing, servicing and maintaining approved coastal zone management and/or restoration projects. Utilization of any and all rights derived under this lease by the mineral lessee, its agents, successors or assigns, shall not interfere with nor hinder the reasonable surface use by the Department of Natural Resources, its Offices or Commissions, as herein above reserved.

Applicant: Mandy L. Trahan

Bidder	Cash Payment	Price / Acre	Rental	Oil	Gas	Other

Bik. 28

Bik. 27

SL 4574

⁹¹
Bik. 26

Bik. 37

Bik. 38

Bik. 39

TR 35107
2,497.27 ± ACS.
DEC., 2002

P. O. B.
X=2,709,100.00
Y= 307,580.00

Bik. 43

BRETON SOUND AREA
GULF OF MEXICO

Bik. 42

Bik. 44

NAD 27
LAMBERT LA. SOUTH ZONE

Plaquemines Parish, Louisiana

3000' 0' 3000'