

**TRACT 35170 - Portion of Block 36, Breton Sound Area, Plaquemines Parish, Louisiana**

All of the lands now or formerly constituting the beds and bottoms of all water bodies of every nature and description, and all islands and other lands formed by accretion, where allowed by law, or by reliction, and excepting tax adjudicated lands, belonging to the State of Louisiana and not presently under mineral lease on December 11, 2002, situated in Plaquemines Parish, Louisiana, and more particularly described as follows: Beginning at the Southwest corner of Block 36, Breton Sound Area, having Coordinates of X = 2,679,600.00 and Y = 307,580.00; thence North 9,700.00 feet along the West line of said Block 36 to a point, also being the most Westerly Southwest corner of State Lease No. 1230, as amended, having Coordinates of X = 2,679,600.00 and Y = 317,280.00; thence along the boundary of said State Lease No. 1230 the following courses: East 7,500.00 feet, South 1,300.00 feet, South 37 degrees 20 minutes 00 seconds West 7,420.24 feet and South 21 degrees 48 minutes 05 seconds West 2,692.58 feet to the most Southerly Southwest corner of said State Lease No. 1230, also being a point on the South line of said Block 36 having Coordinates of X = 2,681,600.00 and Y = 307,580.00; thence West 2,000.00 feet along the South line of said Block 36 to the point of beginning, containing approximately **1,078.40 acres**, all as more particularly outlined on a plat on file in the Office of Mineral Resources, Department of Natural Resources, as provided by the applicant. All bearings, distances and coordinates are based on Louisiana Coordinate System of 1927, (North or South Zone), where applicable.

NOTE: The above description of the Tract nominated for lease has been provided and corrected, where required, exclusively by the nomination party. Any mineral lease selected from this Tract and awarded by the Louisiana State Mineral Board shall be without warranty of any kind, either express, implied, or statutory, including, but not limited to, the implied warranties of merchantability and fitness for a particular purpose. Should the mineral lease awarded by the Louisiana State Mineral Board be subsequently modified, cancelled or abrogated due to the existence of conflicting leases, operating agreements, private claims or other future obligations or conditions which may affect all or any portion of the leased Tract, it shall not relieve the Lessee of the obligation to pay any bonus due thereon to the Louisiana State Mineral Board, nor shall the Louisiana State Mineral Board be obligated to refund any consideration paid by the Lessor prior to such modification, cancellation, or abrogation, including, but not limited to, bonuses, rentals and royalties.

NOTE: It appears, according to our records, that a portion of this Tract is located within the restrictive safety fairway area as set out by the Corps of Engineers, U.S. Army and/or the restrictive anchorage area as set out by the U.S. Coast Guard.

NOTE: The State of Louisiana does hereby reserve, and this lease shall be subject to, the imprescriptible right of surface use in the nature of a servitude in favor of the Department of Natural Resources, including its

Offices and Commissions, for the sole purpose of implementing, constructing, servicing and maintaining approved coastal zone management and/or restoration projects. Utilization of any and all rights derived under this lease by the mineral lessee, its agents, successors or assigns, shall not interfere with nor hinder the reasonable surface use by the Department of Natural Resources, its Offices or Commissions, as herein above reserved.

Applicant: Mandy L. Trahan

Bidder	Cash Payment	Price / Acre	Rental	Oil	Gas	Other

Bik. 30

Bik. 29

272

SL 17483

SL 1230, As Amended

SL 4409, As Amended

Bik. 35

TR 35170  
1,078.40 ± ACS.  
DEC., 2002

Bik. 36

P.O.B.  
X=2,679,600.00  
Y=307,580.00

SL 1237

Bik. 46

Bik. 45

SL 2001

BRETON SOUND AREA

GULF OF MEXICO

Plaquemines Parish, Louisiana

3000' 0' 3000'

NAD 27 LAMBERT LA. SOUTH ZONE

**TRACT 35171 - Portion of Block 45, Breton Sound Area, Plaquemines Parish, Louisiana**

All of the lands now or formerly constituting the beds and bottoms of all water bodies of every nature and description, and all islands and other lands formed by accretion, where allowed by law, or by reliction, and excepting tax adjudicated lands, belonging to the State of Louisiana and not presently under mineral lease on December 11, 2002, situated in Plaquemines Parish, Louisiana, and more particularly described as follows: Beginning at the Northwest corner of Block 45, Breton Sound Area, having Coordinates of X = 2,679,600.00 and Y = 307,580.00; thence East 2,000.00 feet along the North line of said Block 45 to a point, also being the Northwest corner of State Lease No. 1237 having Coordinates of X = 2,681,600.00 and Y = 307,580.00; thence South 2,950.00 feet along the West line of said State Lease No. 1237 to its Southwest corner, also being the Northwest corner of State Lease No. 2001 having Coordinates of X = 2,681,600.00 and Y = 304,630.00; thence along the boundary of said State Lease No. 2001 the following courses: South 2,925.00 feet and East 6,025.35 feet to a point on the South line of said State Lease No. 2001 having Coordinates of X = 2,687,625.35 and Y = 301,705.00; thence Southwesterly on a straight line to a point having Coordinates of X = 2,687,610 and Y = 301,648; thence Southwesterly on a straight line to a point having Coordinates of X = 2,687,014 and Y = 300,054; thence Southwesterly on a straight line to a point having Coordinates of X = 2,685,058 and Y = 297,573; thence Southwesterly on a straight line to a point having Coordinates of X = 2,683,264 and Y = 296,069; thence Southwesterly on a straight line to a point having Coordinates of X = 2,680,880 and Y = 294,918; thence Southwesterly on a straight line to a point on the West line of said Block 45 having Coordinates of X = 2,679,600.00 and Y = 294,643.81; thence North 12,936.19 feet along the West line of said Block 45 to the point of beginning, containing approximately **1,136 acres**, all as more particularly outlined on a plat on file in the Office of Mineral Resources, Department of Natural Resources, as provided by the applicant. All bearings, distances and coordinates are based on Louisiana Coordinate System of 1927, (North or South Zone), where applicable.

NOTE: The above description of the Tract nominated for lease has been provided and corrected, where required, exclusively by the nomination party. Any mineral lease selected from this Tract and awarded by the Louisiana State Mineral Board shall be without warranty of any kind, either express, implied, or statutory, including, but not limited to, the implied warranties of merchantability and fitness for a particular purpose. Should the mineral lease awarded by the Louisiana State Mineral Board be subsequently modified, cancelled or abrogated due to the existence of conflicting leases, operating agreements, private claims or other future obligations or conditions which may affect all or any portion of the leased Tract, it shall not relieve the Lessee of the obligation to pay any bonus due thereon to the Louisiana State Mineral Board, nor shall the Louisiana State Mineral Board be obligated to refund any consideration

paid by the Lessor prior to such modification, cancellation, or abrogation, including, but not limited to, bonuses, rentals and royalties.

NOTE: The State of Louisiana does hereby reserve, and this lease shall be subject to, the imprescriptible right of surface use in the nature of a servitude in favor of the Department of Natural Resources, including its Offices and Commissions, for the sole purpose of implementing, constructing, servicing and maintaining approved coastal zone management and/or restoration projects. Utilization of any and all rights derived under this lease by the mineral lessee, its agents, successors or assigns, shall not interfere with nor hinder the reasonable surface use by the Department of Natural Resources, its Offices or Commissions, as herein above reserved.

Applicant: Mandy L. Trahan

Bidder	Cash Payment	Price / Acre	Rental	Oil	Gas	Other

Bik. 35

Bik. 36

275  
Bik. 37

P. O. B.  
X=2,679,600.00  
Y=307,580.00

SL 1237

SL 2001

SL 16893  
Bik. 46

TR 35171  
1,136.00 ± ACS.  
DEC., 2002

Bik. 45

Bik. 44

SL 17485

SL 16735

SL 15683

SL 16736

BRETON SOUND AREA

SL 16738

SL 12806, As Amended

Bik. 52

Bik. 53

Bik. 51

GULF OF MEXICO

SL 16737

Plaquemines Parish, Louisiana

3000' 0' 3000'

NAD 27  
LAMBERT LA. SOUTH ZONE

**TRACT 35172 - Portion of Block 37, Breton Sound Area, Plaquemines Parish, Louisiana**

All of the lands now or formerly constituting the beds and bottoms of all water bodies of every nature and description, and all islands and other lands formed by accretion, where allowed by law, or by reliction, and excepting tax adjudicated lands, belonging to the State of Louisiana and not presently under mineral lease on December 11, 2002, situated in Plaquemines Parish, Louisiana, and more particularly described as follows: Beginning at a point on the West line of Block 37, Breton Sound Area, also being the Southwest corner of State Lease No. 4409, as amended, having Coordinates of X = 2,694,350.00 and Y = 314,250.00; thence East 10,230.00 feet along the South line of said State Lease No. 4409 to its Southeast corner having Coordinates of X = 2,704,580.00 and Y = 314,250.00; thence North 705.00 feet along the East line of said State Lease No. 4409 to a point having Coordinates of X = 2,704,580.00 and Y = 314,955.00; thence East 2,770.47 feet to a point having Coordinates of X = 2,707,350.47 and Y = 314,955.00; thence Southwesterly on a straight line to a point on the West line of said Block 37 having Coordinates of X = 2,694,350.00 and Y = 310,492.12; thence North 3,757.88 feet along the West line of said Block 37 to the point of beginning, containing approximately **500.40 acres**, all as more particularly outlined on a plat on file in the Office of Mineral Resources, Department of Natural Resources, as provided by the applicant. All bearings, distances and coordinates are based on Louisiana Coordinate System of 1927, (North or South Zone), where applicable.

NOTE: The above description of the Tract nominated for lease has been provided and corrected, where required, exclusively by the nomination party. Any mineral lease selected from this Tract and awarded by the Louisiana State Mineral Board shall be without warranty of any kind, either express, implied, or statutory, including, but not limited to, the implied warranties of merchantability and fitness for a particular purpose. Should the mineral lease awarded by the Louisiana State Mineral Board be subsequently modified, cancelled or abrogated due to the existence of conflicting leases, operating agreements, private claims or other future obligations or conditions which may affect all or any portion of the leased Tract, it shall not relieve the Lessee of the obligation to pay any bonus due thereon to the Louisiana State Mineral Board, nor shall the Louisiana State Mineral Board be obligated to refund any consideration paid by the Lessor prior to such modification, cancellation, or abrogation, including, but not limited to, bonuses, rentals and royalties.

NOTE: It appears, according to our records, that a portion of this Tract is located within the restrictive safety fairway area as set out by the Corps of Engineers, U.S. Army and/or the restrictive anchorage area as set out by the U.S. Coast Guard.

NOTE: The State of Louisiana does hereby reserve, and this lease shall be subject to, the imprescriptible right of surface use in the nature of a servitude in favor of the Department of Natural Resources, including its Offices and Commissions, for the sole purpose of implementing,

constructing, servicing and maintaining approved coastal zone management and/or restoration projects. Utilization of any and all rights derived under this lease by the mineral lessee, its agents, successors or assigns, shall not interfere with nor hinder the reasonable surface use by the Department of Natural Resources, its Offices or Commissions, as herein above reserved.

Applicant: Mandy L. Trahan

Bidder	Cash Payment	Price / Acre	Rental	Oil	Gas	Other



278

SL 1230,  
As Amended

SL 4409, As Amended

Bik. 36

P. O. B.  
X=2,694,350.00  
Y= 314,250.00

Bik. 37

Bik. 38

TR 35172  
500.40 ± ACS.  
DEC., 2002

Bik. 44

Bik. 45

Bik. 43

BRETON SOUND AREA  
GULF OF MEXICO

NAD 27 LAMBERT LA. SOUTH ZONE

Plaquemines Parish, Louisiana

3000' 0' 3000'

**TRACT 35173 - Portion of Block 47, Chandeleur Sound Area, St. Bernard Parish, Louisiana**

All of the lands now or formerly constituting the beds and bottoms of all water bodies of every nature and description, and all islands and other lands formed by accretion, where allowed by law, or by reliction, and excepting tax adjudicated lands, belonging to the State of Louisiana and not presently under mineral lease on December 11, 2002, situated in St. Bernard Parish, Louisiana, and more particularly described as follows: Beginning at a point having Coordinates of X = 2,605,850.00 and Y = 396,080.00, also being the Southeast corner of Block 47, Chandeleur Sound Area; thence West along the South line of said Block 47 7,500.00 feet to a point having Coordinates of X = 2,598,350.00 and Y = 396,080.00; thence North 5,920.00 feet to a point having Coordinates of X = 2,598,350.00 and Y = 402,000.00; thence East 7,500.00 feet to a point having Coordinates of X = 2,605,850.00 and Y = 402,000.00; thence South 5,920.00 feet to the point of beginning, **LESS AND EXCEPT** that portion of State Lease No. 4039, as amended, that lies within the above described tract, containing approximately **70 acres**, all as more particularly outlined on a plat on file in the Office of Mineral Resources, Department of Natural Resources. All bearings, distances and coordinates are based on Louisiana Coordinate System of 1927, (North or South Zone), where applicable.

NOTE: The above description of the Tract nominated for lease has been provided and corrected, where required, exclusively by the nomination party. Any mineral lease selected from this Tract and awarded by the Louisiana State Mineral Board shall be without warranty of any kind, either express, implied, or statutory, including, but not limited to, the implied warranties of merchantability and fitness for a particular purpose. Should the mineral lease awarded by the Louisiana State Mineral Board be subsequently modified, cancelled or abrogated due to the existence of conflicting leases, operating agreements, private claims or other future obligations or conditions which may affect all or any portion of the leased Tract, it shall not relieve the Lessee of the obligation to pay any bonus due thereon to the Louisiana State Mineral Board, nor shall the Louisiana State Mineral Board be obligated to refund any consideration paid by the Lessor prior to such modification, cancellation, or abrogation, including, but not limited to, bonuses, rentals and royalties.

NOTE: The Department of Wildlife and Fisheries has designated certain areas in the coastal waters of the State of Louisiana as Oyster Seed Bed Areas. The exact location of those Seed Bed Areas must be obtained from the Department of Wildlife and Fisheries and any work done under a mineral lease from the State of Louisiana may necessarily be conducted in conformity with the rules and regulations promulgated by the said Department of Wildlife and Fisheries for Oyster Seed Bed Areas.

NOTE: The State of Louisiana does hereby reserve, and this lease shall be subject to, the imprescriptible right of surface use in the nature of a servitude in favor of the Department of Natural Resources, including its Offices and Commissions, for the sole purpose of implementing,

constructing, servicing and maintaining approved coastal zone management and/or restoration projects. Utilization of any and all rights derived under this lease by the mineral lessee, its agents, successors or assigns, shall not interfere with nor hinder the reasonable surface use by the Department of Natural Resources, its Offices or Commissions, as herein above reserved.

Applicant: Stephen M. Jenkins & Associates, Inc.

Bidder	Cash Payment	Price / Acre	Rental	Oil	Gas	Other



ST. BERNARD PARISH

CHANDELEUR SOUND AREA

BLOCK 47

LAKE ELOI

BLOCK 48

TR35173  
70 +/- ACRES  
DEC. 2002

1955 SHORELINE

SL 4039

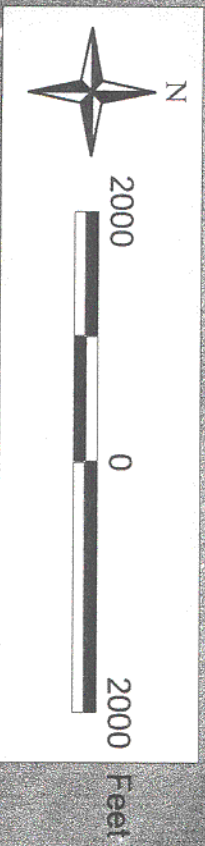
T15S-R17E

PRESENT-DAY  
SHORELINE

P.O.B.  
X=2,605,850.00  
Y=396,080.00

BLOCK 72

BLOCK 71





**TRACT 35174 - Portion of Block 27, North Lake Borgne Area, Orleans and St. Bernard Parishes, Louisiana**

All of the lands now or formerly constituting the beds and bottoms of all water bodies of every nature and description, and all islands and other lands formed by accretion, where allowed by law, or by reliction, and excepting tax adjudicated lands, belonging to the State of Louisiana and not presently under mineral lease on December 11, 2002, situated in Orleans and St. Bernard Parishes, Louisiana, and more particularly described as follows: Beginning at the Northeast corner of Block 27, North Lake Borgne Area, having Coordinates of X = 2,536,250.00 and Y = 538,958.70; thence South 9,000.00 feet along the East boundary of said Block 27 to its Southeast corner having Coordinates of X = 2,536,250.00 and Y = 529,958.70; thence West 18,000.00 feet along the South boundary of said Block 27 to its Southwest corner having Coordinates of X = 2,518,250.00 and Y = 529,958.70; thence North 9,000.00 feet along the West boundary of said Block 27 to its Northwest corner having Coordinates of X = 2,518,250.00 and Y = 538.958.70; thence East 18,000.00 feet along the North boundary of said Block 27 to the point of beginning, containing approximately **1,060 acres**, all as more particularly outlined on a plat on file in the Office of Mineral Resources, Department of Natural Resources, as provided by the applicant. All bearings, distances and coordinates are based on Louisiana Coordinate System of 1927, (North or South Zone), where applicable.

NOTE: The above description of the Tract nominated for lease has been provided and corrected, where required, exclusively by the nomination party. Any mineral lease selected from this Tract and awarded by the Louisiana State Mineral Board shall be without warranty of any kind, either express, implied, or statutory, including, but not limited to, the implied warranties of merchantability and fitness for a particular purpose. Should the mineral lease awarded by the Louisiana State Mineral Board be subsequently modified, cancelled or abrogated due to the existence of conflicting leases, operating agreements, private claims or other future obligations or conditions which may affect all or any portion of the leased Tract, it shall not relieve the Lessee of the obligation to pay any bonus due thereon to the Louisiana State Mineral Board, nor shall the Louisiana State Mineral Board be obligated to refund any consideration paid by the Lessor prior to such modification, cancellation, or abrogation, including, but not limited to, bonuses, rentals and royalties.

NOTE: The Office of Mineral Resources will require a minimum bonus of \$200 per acre and a minimum royalty of 22%.

NOTE: The Department of Wildlife and Fisheries has designated certain areas in the coastal waters of the State of Louisiana as Oyster Seed Bed Areas. The exact location of those Seed Bed Areas must be obtained from the Department of Wildlife and Fisheries and any work done under a mineral lease from the State of Louisiana may necessarily be conducted in conformity with the rules and regulations promulgated by the said Department of Wildlife and Fisheries for Oyster Seed Bed Areas.

NOTE: The State of Louisiana does hereby reserve, and this lease shall be subject to, the imprescriptible right of surface use in the nature of a servitude in favor of the Department of Natural Resources, including its Offices and Commissions, for the sole purpose of implementing, constructing, servicing and maintaining approved coastal zone management and/or restoration projects. Utilization of any and all rights derived under this lease by the mineral lessee, its agents, successors or assigns, shall not interfere with nor hinder the reasonable surface use by the Department of Natural Resources, its Offices or Commissions, as herein above reserved.

Applicant: H.I. McDonnough

Bidder	Cash Payment	Price / Acre	Rental	Oil	Gas	Other



**TRACT 35175 - Portion of Block 23, North Lake Borgne Area, Orleans, St. Bernard and St. Tammany Parishes, Louisiana**

All of the lands now or formerly constituting the beds and bottoms of all water bodies of every nature and description, and all islands and other lands formed by accretion, where allowed by law, or by reliction, and excepting tax adjudicated lands, belonging to the State of Louisiana and not presently under mineral lease on December 11, 2002, situated in Orleans, St. Bernard and St. Tammany Parishes, Louisiana, and more particularly described as follows: Beginning at the Southwest corner of Block 23, North Lake Borgne Area, having Coordinates of X = 2,536,250.00 and Y = 538,958.70; thence North 9,000.00 feet along the West boundary of said Block 23 to its Northwest corner having Coordinates of X = 2,536,250.00 and Y = 547,958.70; thence East 18,000.00 feet along the North boundary of said Block 23 to its Northeast corner having Coordinates of X = 2,554,250.00 and Y = 547,958.70; thence South 9,000.00 feet along the East boundary of said Block 23 to its Southeast corner having Coordinates of X = 2,554,250.00 and Y = 538,958.70; thence West 2,219.60 feet along the South boundary of said Block 23 to the Southeast corner of State Lease No. 6646, as amended, having Coordinates of X = 2,552,030.40 and Y = 538,958.70; thence along the boundaries of said State Lease No. 6646, as amended, the following courses: North 3,018.10 feet, West 4,600.00 feet, North 900.00 feet, West 4,600.00 feet, South 2,876.80 feet, West 6,100.40 feet and South 1,041.30 feet to a point having Coordinates of X = 2,536,730.00 and Y = 538,958.70; thence West 480.00 feet along the South boundary of said Block 23 to the point of beginning, containing approximately **1,746.00 acres**, all as more particularly outlined on a plat on file in the Office of Mineral Resources, Department of Natural Resources, as provided by the applicant. All bearings, distances and coordinates are based on Louisiana Coordinate System of 1927, (North or South Zone), where applicable.

NOTE: The above description of the Tract nominated for lease has been provided and corrected, where required, exclusively by the nomination party. Any mineral lease selected from this Tract and awarded by the Louisiana State Mineral Board shall be without warranty of any kind, either express, implied, or statutory, including, but not limited to, the implied warranties of merchantability and fitness for a particular purpose. Should the mineral lease awarded by the Louisiana State Mineral Board be subsequently modified, cancelled or abrogated due to the existence of conflicting leases, operating agreements, private claims or other future obligations or conditions which may affect all or any portion of the leased Tract, it shall not relieve the Lessee of the obligation to pay any bonus due thereon to the Louisiana State Mineral Board, nor shall the Louisiana State Mineral Board be obligated to refund any consideration paid by the Lessor prior to such modification, cancellation, or abrogation, including, but not limited to, bonuses, rentals and royalties.

NOTE: The Office of Mineral Resources will require a minimum bonus of \$200 per acre and a minimum royalty of 22%.

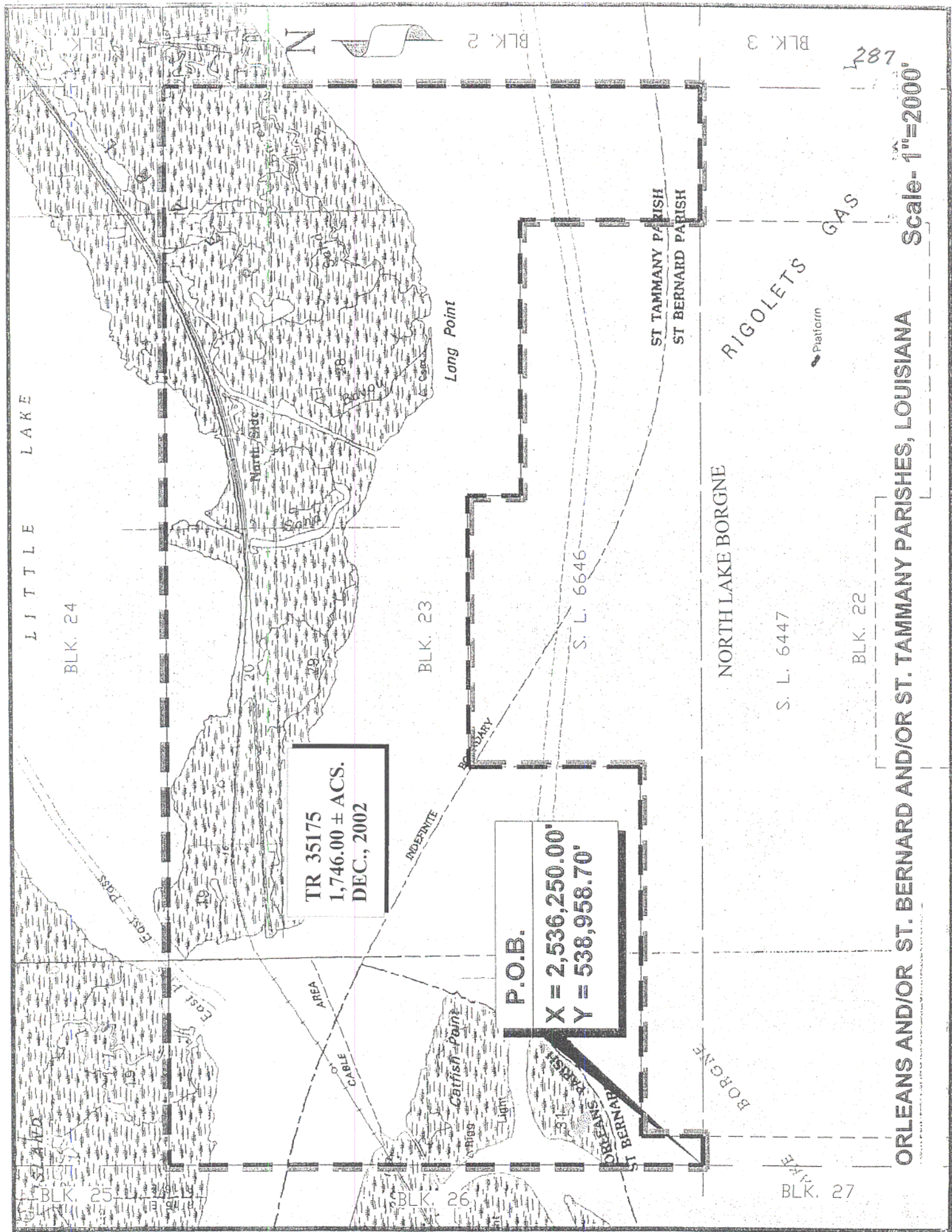


NOTE: The Department of Wildlife and Fisheries has designated certain areas in the coastal waters of the State of Louisiana as Oyster Seed Bed Areas. The exact location of those Seed Bed Areas must be obtained from the Department of Wildlife and Fisheries and any work done under a mineral lease from the State of Louisiana may necessarily be conducted in conformity with the rules and regulations promulgated by the said Department of Wildlife and Fisheries for Oyster Seed Bed Areas.

NOTE: The State of Louisiana does hereby reserve, and this lease shall be subject to, the imprescriptible right of surface use in the nature of a servitude in favor of the Department of Natural Resources, including its Offices and Commissions, for the sole purpose of implementing, constructing, servicing and maintaining approved coastal zone management and/or restoration projects. Utilization of any and all rights derived under this lease by the mineral lessee, its agents, successors or assigns, shall not interfere with nor hinder the reasonable surface use by the Department of Natural Resources, its Offices or Commissions, as herein above reserved.

Applicant: H.I. McDonnough

Bidder	Cash Payment	Price / Acre	Rental	Oil	Gas	Other



TR 35175  
1,746.00 ± ACS.  
DEC., 2002

P.O.B.  
X = 2,536,250.00  
Y = 538,958.70

ORLEANS AND/OR ST. BERNARD AND/OR ST. TAMMANY PARISHES, LOUISIANA  
Scale- 1"=2000'

**TRACT 35176 - Portion of Block 22, North Lake Borgne Area, St. Bernard Parish, Louisiana**

All of the lands now or formerly constituting the beds and bottoms of all water bodies of every nature and description, and all islands and other lands formed by accretion, where allowed by law, or by reliction, and excepting tax adjudicated lands, belonging to the State of Louisiana and not presently under mineral lease on December 11, 2002, situated in St. Bernard Parish, Louisiana, and more particularly described as follows: Beginning at the Northeast corner of Block 22, North Lake Borgne Area, having Coordinates of X = 2,554,250.00 and Y = 538,958.70; thence South 4,500.00 feet to the Northeast corner of State Lease No. 6647, as amended, having Coordinates of X = 2,554,250.00 and Y = 534,458.70; thence West 2,219.60 feet along the North boundary of said State Lease No. 6647 to its Northwest corner having Coordinates of X = 2,552,030.40 and Y = 534,458.70; thence South 4,500.00 feet along the West boundary of said State Lease No. 6647 to its Southwest corner having Coordinates of X = 2,552,030.40 and Y = 529,958.70; thence West 15,780.40 feet along the South boundary of Block 22, North Lake Borgne Area, to a point having Coordinates of X = 2,536,250.00 and Y = 529,958.70; thence North 9,000.00 feet along the West boundary of Block 22, North Lake Borgne Area, to a point having Coordinates of X = 2,536,250.00 and Y = 538,958.70; thence East 480.00 feet along the North boundary of Block 22, North Lake Borgne Area, to a point being the Northwest boundary of State Lease No. 6647 having Coordinates of X = 2,536,730.00 and Y = 538,958.70; thence along the State Lease No. 6647 the following courses: South 4,099.80 feet, East 6,100.40 feet, North 1,199.80 feet, East 4,600.00 feet, South 900.00 feet, East 4,600.00 feet and North 3,800.00 feet to a point having Coordinates of X = 2,552,030.40 and Y = 538,958.70; thence East 2,219.60 feet to the point of beginning, containing approximately **2,208.02 acres**, all as more particularly outlined on a plat on file in the Office of Mineral Resources, Department of Natural Resources, as provided by the applicant. All bearings, distances and coordinates are based on Louisiana Coordinate System of 1927, (North or South Zone), where applicable.

NOTE: The above description of the Tract nominated for lease has been provided and corrected, where required, exclusively by the nomination party. Any mineral lease selected from this Tract and awarded by the Louisiana State Mineral Board shall be without warranty of any kind, either express, implied, or statutory, including, but not limited to, the implied warranties of merchantability and fitness for a particular purpose. Should the mineral lease awarded by the Louisiana State Mineral Board be subsequently modified, cancelled or abrogated due to the existence of conflicting leases, operating agreements, private claims or other future obligations or conditions which may affect all or any portion of the leased Tract, it shall not relieve the Lessee of the obligation to pay any bonus due thereon to the Louisiana State Mineral Board, nor shall the Louisiana State Mineral Board be obligated to refund any consideration paid by the Lessor prior to such modification, cancellation, or abrogation, including, but not limited to, bonuses, rentals and royalties.

NOTE: The Office of Mineral Resources will require a minimum bonus of \$200 per acre and a minimum royalty of 22%.

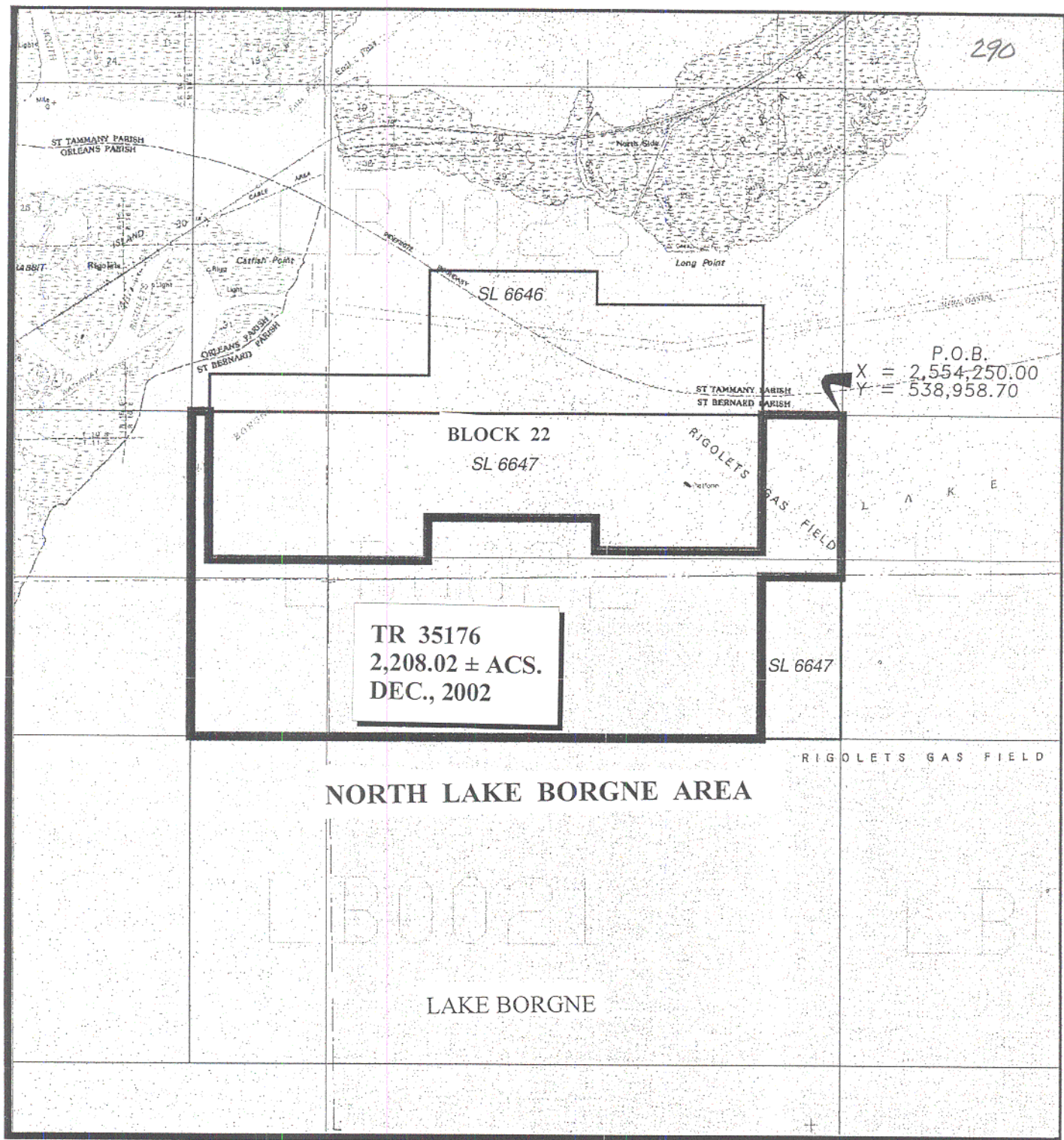
NOTE: The Department of Wildlife and Fisheries has designated certain areas in the coastal waters of the State of Louisiana as Oyster Seed Bed Areas. The exact location of those Seed Bed Areas must be obtained from the Department of Wildlife and Fisheries and any work done under a mineral lease from the State of Louisiana may necessarily be conducted in conformity with the rules and regulations promulgated by the said Department of Wildlife and Fisheries for Oyster Seed Bed Areas.

NOTE: The State of Louisiana does hereby reserve, and this lease shall be subject to, the imprescriptible right of surface use in the nature of a servitude in favor of the Department of Natural Resources, including its Offices and Commissions, for the sole purpose of implementing, constructing, servicing and maintaining approved coastal zone management and/or restoration projects. Utilization of any and all rights derived under this lease by the mineral lessee, its agents, successors or assigns, shall not interfere with nor hinder the reasonable surface use by the Department of Natural Resources, its Offices or Commissions, as herein above reserved.

Applicant: H.I. McDonnough

Bidder	Cash Payment	Price / Acre	Rental	Oil	Gas	Other





NORTH LAKE BORGNE AREA  
ST. BERNARD PARISH

SCALE: 1" = 4000'

**TRACT 35177 - Lake Borgne Area, St. Bernard Parish, Louisiana**

All of the lands now or formerly constituting the beds and bottoms of all water bodies of every nature and description, and all islands and other lands formed by accretion, where allowed by law, or by reliction, and excepting tax adjudicated lands, belonging to the State of Louisiana and not presently under mineral lease on December 11, 2002, situated in St. Bernard Parish, Louisiana, and more particularly described as follows: Beginning at a point having Coordinates of X = 2,554,250.00 and Y = 506,200.65; thence South 7,379.024 feet to a point having Coordinates of X = 2,554,250.00 and Y = 498,821.63; thence West 14,758.048 feet to a point having Coordinates of X = 2,539,491.95 and Y = 498,821.63; thence North 7,379.024 feet to a point having Coordinates of X = 2,539,491.95 and Y = 506,200.65; thence East 14,758.048 feet to the point of beginning, containing approximately **2,500.00 acres**, all as more particularly outlined on a plat on file in the Office of Mineral Resources, Department of Natural Resources, as provided by the applicant. All bearings, distances and coordinates are based on Louisiana Coordinate System of 1927, (North or South Zone), where applicable.

NOTE: The above description of the Tract nominated for lease has been provided and corrected, where required, exclusively by the nomination party. Any mineral lease selected from this Tract and awarded by the Louisiana State Mineral Board shall be without warranty of any kind, either express, implied, or statutory, including, but not limited to, the implied warranties of merchantability and fitness for a particular purpose. Should the mineral lease awarded by the Louisiana State Mineral Board be subsequently modified, cancelled or abrogated due to the existence of conflicting leases, operating agreements, private claims or other future obligations or conditions which may affect all or any portion of the leased Tract, it shall not relieve the Lessee of the obligation to pay any bonus due thereon to the Louisiana State Mineral Board, nor shall the Louisiana State Mineral Board be obligated to refund any consideration paid by the Lessor prior to such modification, cancellation, or abrogation, including, but not limited to, bonuses, rentals and royalties.

NOTE: The Office of Mineral Resources will require a minimum bonus of \$230 per acre and a minimum royalty of 23%.

NOTE: The Department of Wildlife and Fisheries has designated certain areas in the coastal waters of the State of Louisiana as Oyster Seed Bed Areas. The exact location of those Seed Bed Areas must be obtained from the Department of Wildlife and Fisheries and any work done under a mineral lease from the State of Louisiana may necessarily be conducted in conformity with the rules and regulations promulgated by the said Department of Wildlife and Fisheries for Oyster Seed Bed Areas.

NOTE: The State of Louisiana does hereby reserve, and this lease shall be subject to, the imprescriptible right of surface use in the nature of a servitude in favor of the Department of Natural Resources, including its Offices and Commissions, for the sole purpose of implementing,

constructing, servicing and maintaining approved coastal zone management and/or restoration projects. Utilization of any and all rights derived under this lease by the mineral lessee, its agents, successors or assigns, shall not interfere with nor hinder the reasonable surface use by the Department of Natural Resources, its Offices or Commissions, as herein above reserved.

Applicant: H.I. McDonnough

Bidder	Cash Payment	Price / Acre	Rental	Oil	Gas	Other



293

LAKE BORGNE

P.O.B.  
X = 2,554,250.00  
Y = 506,200.65

TR 35177  
2,500.00 ± ACS.  
DEC., 2002



St. Bernard Parish, Louisiana

SCALE: 1" = 4000'



**TRACT 35178 - Lake Borgne Area, St. Bernard Parish, Louisiana**

All of the lands now or formerly constituting the beds and bottoms of all water bodies of every nature and description, and all islands and other lands formed by accretion, where allowed by law, or by reliction, and excepting tax adjudicated lands, belonging to the State of Louisiana and not presently under mineral lease on December 11, 2002, situated in St. Bernard Parish, Louisiana, and more particularly described as follows: Beginning at a point having Coordinates of X = 2,554,250.00 and Y = 498,821.63; thence South 7,379.024 feet to a point having Coordinates of X = 2,554,250.00 and Y = 491,442.60; thence West 14,758.048 feet to a point having Coordinates of X = 2,539,491.95 and Y = 491,442.60; thence North 7,379.024 feet to a point having Coordinates of X = 2,539,491.95 and Y = 498,821.63; thence East 14,758.048 feet to the point of beginning, containing approximately **2,500.00 acres**, all as more particularly outlined on a plat on file in the Office of Mineral Resources, Department of Natural Resources, as provided by the applicant. All bearings, distances and coordinates are based on Louisiana Coordinate System of 1927, (North or South Zone), where applicable.

NOTE: The above description of the Tract nominated for lease has been provided and corrected, where required, exclusively by the nomination party. Any mineral lease selected from this Tract and awarded by the Louisiana State Mineral Board shall be without warranty of any kind, either express, implied, or statutory, including, but not limited to, the implied warranties of merchantability and fitness for a particular purpose. Should the mineral lease awarded by the Louisiana State Mineral Board be subsequently modified, cancelled or abrogated due to the existence of conflicting leases, operating agreements, private claims or other future obligations or conditions which may affect all or any portion of the leased Tract, it shall not relieve the Lessee of the obligation to pay any bonus due thereon to the Louisiana State Mineral Board, nor shall the Louisiana State Mineral Board be obligated to refund any consideration paid by the Lessor prior to such modification, cancellation, or abrogation, including, but not limited to, bonuses, rentals and royalties.

NOTE: The Office of Mineral Resources will require a minimum bonus of \$230 per acre and a minimum royalty of 23%.

NOTE: The Department of Wildlife and Fisheries has designated certain areas in the coastal waters of the State of Louisiana as Oyster Seed Bed Areas. The exact location of those Seed Bed Areas must be obtained from the Department of Wildlife and Fisheries and any work done under a mineral lease from the State of Louisiana may necessarily be conducted in conformity with the rules and regulations promulgated by the said Department of Wildlife and Fisheries for Oyster Seed Bed Areas.

NOTE: The State of Louisiana does hereby reserve, and this lease shall be subject to, the imprescriptible right of surface use in the nature of a servitude in favor of the Department of Natural Resources, including its Offices and Commissions, for the sole purpose of implementing,

constructing, servicing and maintaining approved coastal zone management and/or restoration projects. Utilization of any and all rights derived under this lease by the mineral lessee, its agents, successors or assigns, shall not interfere with nor hinder the reasonable surface use by the Department of Natural Resources, its Offices or Commissions, as herein above reserved.

Applicant: H.I. McDonnough

Bidder	Cash Payment	Price / Acre	Rental	Oil	Gas	Other

LAKE BORGNE

296

LB00

P.O.B.  
X = 2,554,250.00  
Y = 498,821.63

TR 35178  
2,500.00 ± ACS.  
DEC., 2002

SL 17078

SL 17547

SL 17079

Pte aux Marchettes

Lake

Shore

Bogus



St. Bernard Parish, Louisiana

SCALE: 1" = 4000'

**TRACT 35179 - Portion of Block 1, North Lake Borgne Area, St. Tammany Parish, Louisiana**

All of the lands now or formerly constituting the beds and bottoms of all water bodies of every nature and description, and all islands and other lands formed by accretion, where allowed by law, or by reliction, and excepting tax adjudicated lands, belonging to the State of Louisiana and not presently under mineral lease on December 11, 2002, situated in St. Tammany Parish, Louisiana, and more particularly described as follows: Beginning at a point on the South boundary of Block 1, North Lake Borgne Area, having Coordinates of X = 2,563,250.00 and Y = 547,958.70; thence West 9,000.00 feet along the South boundary of said Block 1 to its Southwest corner having Coordinates of X = 2,554,250.00 and Y = 547,958.70; thence North approximately 8,400.00 feet along the West boundary of said Block 1 to its Northwest corner on the boundary between the States of Louisiana and Mississippi having a Coordinate of X = 2,554,250.00; thence Southeasterly and Northeasterly along the said boundary between Louisiana and Mississippi to an intersection point with a North - South line having a Coordinate of X = 2,563,250.00; thence South approximately 10,540.00 feet to the point of beginning, **LESS AND EXCEPT**, if any, that portion that may lie within the State of Mississippi, containing approximately **1,051.00 acres**, all as more particularly outlined on a plat on file in the Office of Mineral Resources, Department of Natural Resources, as provided by the applicant. All bearings, distances and coordinates are based on Louisiana Coordinate System of 1927, (North or South Zone), where applicable.

NOTE: The above description of the Tract nominated for lease has been provided and corrected, where required, exclusively by the nomination party. Any mineral lease selected from this Tract and awarded by the Louisiana State Mineral Board shall be without warranty of any kind, either express, implied, or statutory, including, but not limited to, the implied warranties of merchantability and fitness for a particular purpose. Should the mineral lease awarded by the Louisiana State Mineral Board be subsequently modified, cancelled or abrogated due to the existence of conflicting leases, operating agreements, private claims or other future obligations or conditions which may affect all or any portion of the leased Tract, it shall not relieve the Lessee of the obligation to pay any bonus due thereon to the Louisiana State Mineral Board, nor shall the Louisiana State Mineral Board be obligated to refund any consideration paid by the Lessor prior to such modification, cancellation, or abrogation, including, but not limited to, bonuses, rentals and royalties.

NOTE: The Office of Mineral Resources will require a minimum bonus of \$200 per acre and a minimum royalty of 22%.

NOTE: The Department of Wildlife and Fisheries has designated certain areas in the coastal waters of the State of Louisiana as Oyster Seed Bed Areas. The exact location of those Seed Bed Areas must be obtained from the Department of Wildlife and Fisheries and any work done under a mineral lease from the State of Louisiana may necessarily be conducted in

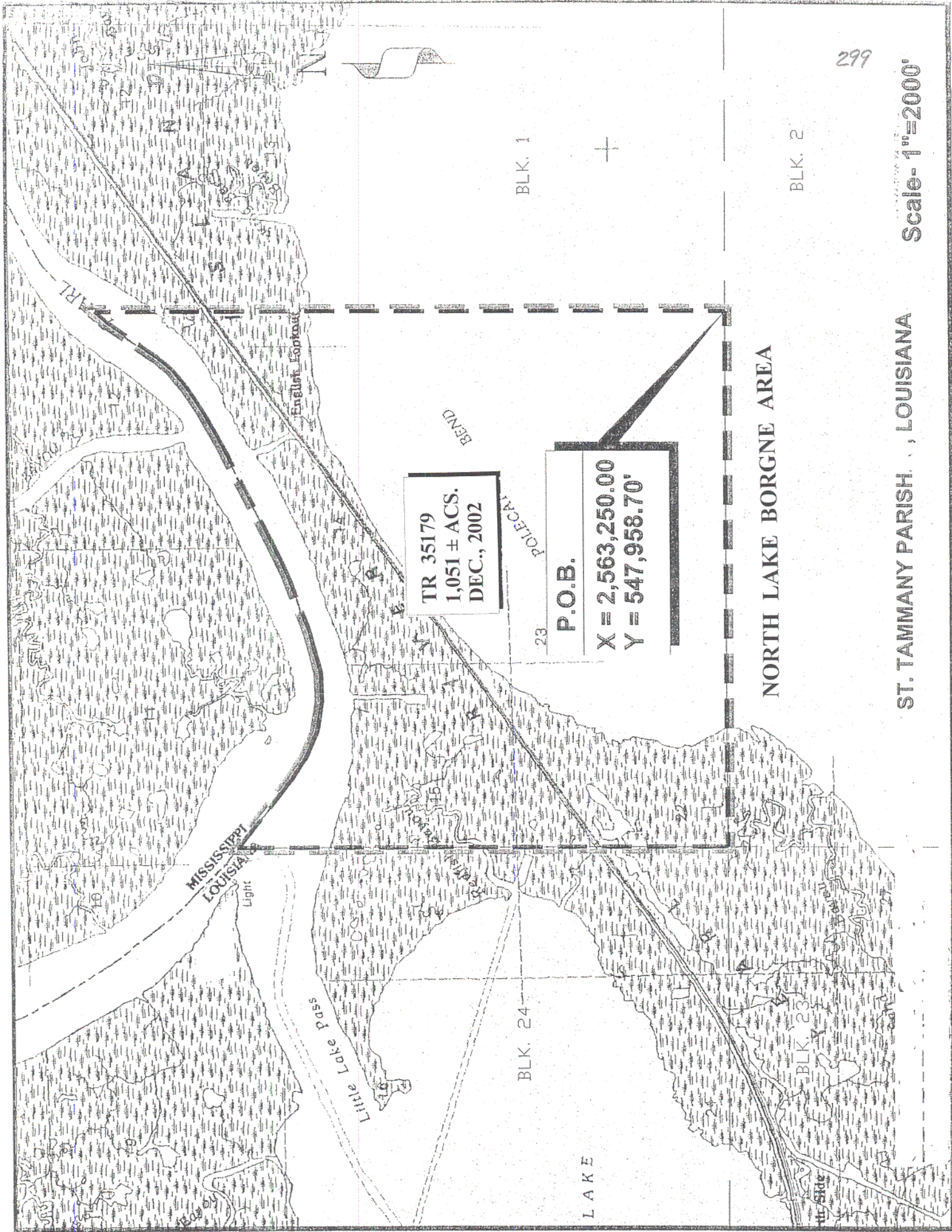
conformity with the rules and regulations promulgated by the said Department of Wildlife and Fisheries for Oyster Seed Bed Areas.

NOTE: The State of Louisiana does hereby reserve, and this lease shall be subject to, the imprescriptible right of surface use in the nature of a servitude in favor of the Department of Natural Resources, including its Offices and Commissions, for the sole purpose of implementing, constructing, servicing and maintaining approved coastal zone management and/or restoration projects. Utilization of any and all rights derived under this lease by the mineral lessee, its agents, successors or assigns, shall not interfere with nor hinder the reasonable surface use by the Department of Natural Resources, its Offices or Commissions, as herein above reserved.

Applicant: H.I. McDonnough

Bidder	Cash Payment	Price / Acre	Rental	Oil	Gas	Other





**TRACT 35180 - Portion of Block 2, North Lake Borgne Area, St. Bernard and St. Tammany Parishes, Louisiana**

All of the lands now or formerly constituting the beds and bottoms of all water bodies of every nature and description, and all islands and other lands formed by accretion, where allowed by law, or by reliction, and excepting tax adjudicated lands, belonging to the State of Louisiana and not presently under mineral lease on December 11, 2002, situated in St. Bernard and St. Tammany Parishes, Louisiana, and more particularly described as follows: Beginning at a point on the North boundary Block 2, North Lake Borgne Area, having Coordinates of X = 2,563,250.00 and Y = 547,958.70; thence South 9,000.00 feet to a point on the South boundary of said Block 2 having Coordinates of X = 2,563,250.00 and Y = 538,958.70; thence West 9,000.00 feet along the said South boundary of said Block 2 to its Southwest corner having Coordinates of X = 2,554,250.00 and Y = 538,958.70; thence North 9,000.00 feet along the West boundary of said Block 2 to its Northwest corner having Coordinates of X = 2,554,250.00 and Y = 547,958.70; thence East 9,000.00 feet along the North boundary of said Block 2 to the point of beginning, containing approximately **1,794.00 acres**, all as more particularly outlined on a plat on file in the Office of Mineral Resources, Department of Natural Resources, as provided by the applicant. All bearings, distances and coordinates are based on Louisiana Coordinate System of 1927, (North or South Zone), where applicable.

NOTE: The above description of the Tract nominated for lease has been provided and corrected, where required, exclusively by the nomination party. Any mineral lease selected from this Tract and awarded by the Louisiana State Mineral Board shall be without warranty of any kind, either express, implied, or statutory, including, but not limited to, the implied warranties of merchantability and fitness for a particular purpose. Should the mineral lease awarded by the Louisiana State Mineral Board be subsequently modified, cancelled or abrogated due to the existence of conflicting leases, operating agreements, private claims or other future obligations or conditions which may affect all or any portion of the leased Tract, it shall not relieve the Lessee of the obligation to pay any bonus due thereon to the Louisiana State Mineral Board, nor shall the Louisiana State Mineral Board be obligated to refund any consideration paid by the Lessor prior to such modification, cancellation, or abrogation, including, but not limited to, bonuses, rentals and royalties.

NOTE: The Office of Mineral Resources will require a minimum bonus of \$200 per acre and a minimum royalty of 22%.

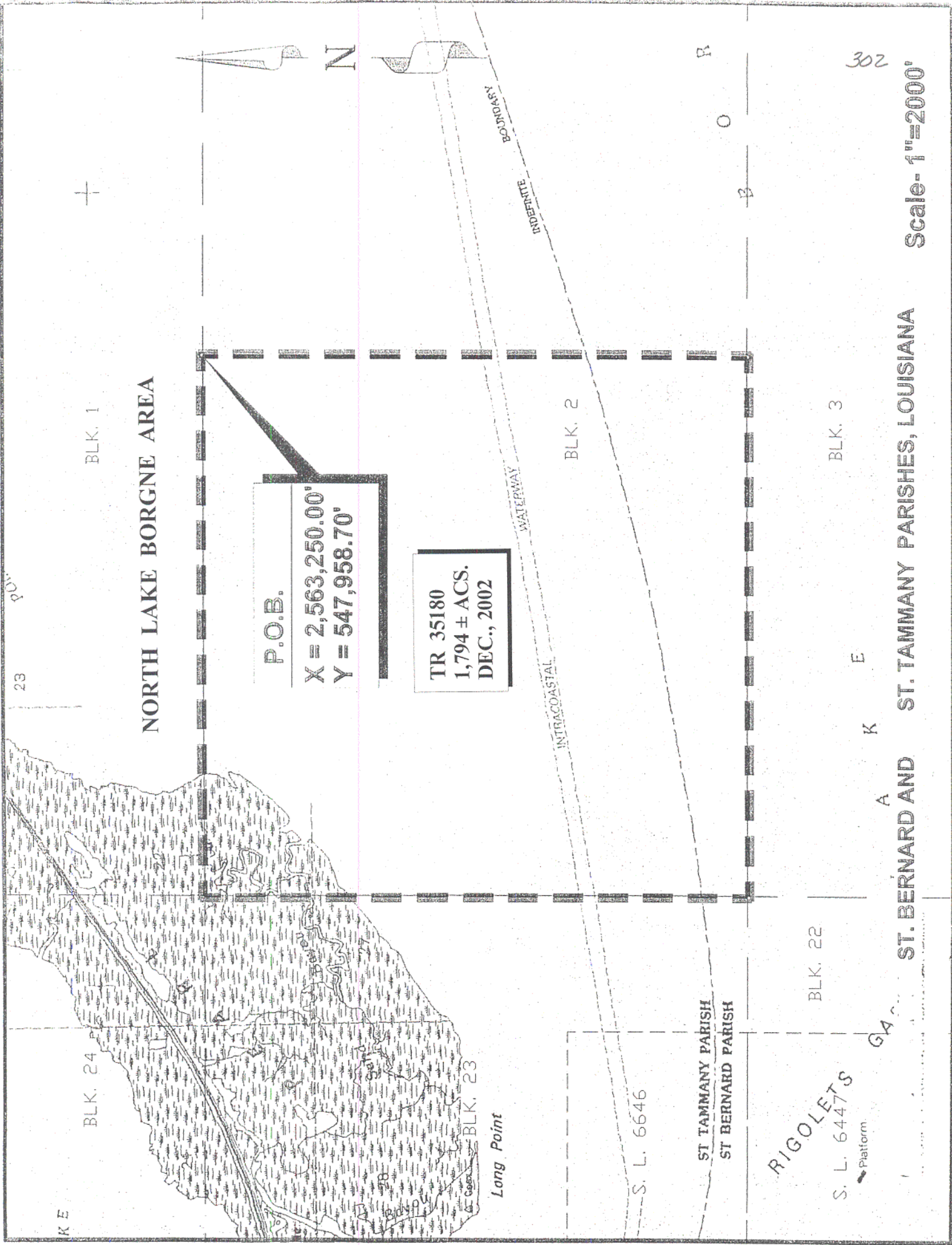
NOTE: The Department of Wildlife and Fisheries has designated certain areas in the coastal waters of the State of Louisiana as Oyster Seed Bed Areas. The exact location of those Seed Bed Areas must be obtained from the Department of Wildlife and Fisheries and any work done under a mineral lease from the State of Louisiana may necessarily be conducted in conformity with the rules and regulations promulgated by the said Department of Wildlife and Fisheries for Oyster Seed Bed Areas.

NOTE: The State of Louisiana does hereby reserve, and this lease shall be subject to, the imprescriptible right of surface use in the nature of a servitude in favor of the Department of Natural Resources, including its Offices and Commissions, for the sole purpose of implementing, constructing, servicing and maintaining approved coastal zone management and/or restoration projects. Utilization of any and all rights derived under this lease by the mineral lessee, its agents, successors or assigns, shall not interfere with nor hinder the reasonable surface use by the Department of Natural Resources, its Offices or Commissions, as herein above reserved.

Applicant: H.I. McDonnough

Bidder	Cash Payment	Price / Acre	Rental	Oil	Gas	Other





BLK. 1

NORTH LAKE BORGNE AREA

P.O.B.

X = 2,563,250.00'  
Y = 547,958.70'

TR 35180  
1,794 ± ACS.  
DEC., 2002

Long Point

BLK. 2

BLK. 3

BLK. 22

BLK. 24

BLK. 23

ST. TAMMANY PARISH  
ST. BERNARD PARISH

RIGOLET S  
S. L. 6447 S  
Platform

A  
K  
E

ST. BERNARD AND

ST. TAMMANY PARISHES, LOUISIANA

Scale- 1"=2000'

**TRACT 35181 - Portion of Block 4, North Lake Borgne Area, St. Bernard Parish, Louisiana**

All of the lands now or formerly constituting the beds and bottoms of all water bodies of every nature and description, and all islands and other lands formed by accretion, where allowed by law, or by reliction, and excepting tax adjudicated lands, belonging to the State of Louisiana and not presently under mineral lease on December 11, 2002, situated in St. Bernard Parish, Louisiana, and more particularly described as follows: Beginning at the Northwest corner of Block 4, North Lake Borgne Area, having Coordinates of X = 2,554,250.00 and Y = 529,958.70; thence East 9,000.00 feet to a point having Coordinates of X = 2,563,250.00 and Y = 529,958.70; thence South 9,000.00 feet to a point having Coordinates of X = 2,563,250.00 and Y = 520,958.70; thence West 9,000.00 feet to a point having Coordinates of X = 2,554,250.00 and Y = 520,958.70; thence North 9,000.00 feet to the point of beginning, containing approximately **1,859.50 acres**, all as more particularly outlined on a plat on file in the Office of Mineral Resources, Department of Natural Resources, as provided by the applicant. All bearings, distances and coordinates are based on Louisiana Coordinate System of 1927, (North or South Zone), where applicable.

NOTE: The above description of the Tract nominated for lease has been provided and corrected, where required, exclusively by the nomination party. Any mineral lease selected from this Tract and awarded by the Louisiana State Mineral Board shall be without warranty of any kind, either express, implied, or statutory, including, but not limited to, the implied warranties of merchantability and fitness for a particular purpose. Should the mineral lease awarded by the Louisiana State Mineral Board be subsequently modified, cancelled or abrogated due to the existence of conflicting leases, operating agreements, private claims or other future obligations or conditions which may affect all or any portion of the leased Tract, it shall not relieve the Lessee of the obligation to pay any bonus due thereon to the Louisiana State Mineral Board, nor shall the Louisiana State Mineral Board be obligated to refund any consideration paid by the Lessor prior to such modification, cancellation, or abrogation, including, but not limited to, bonuses, rentals and royalties.

NOTE: The Office of Mineral Resources will require a minimum bonus of \$200 per acre and a minimum royalty of 22%.

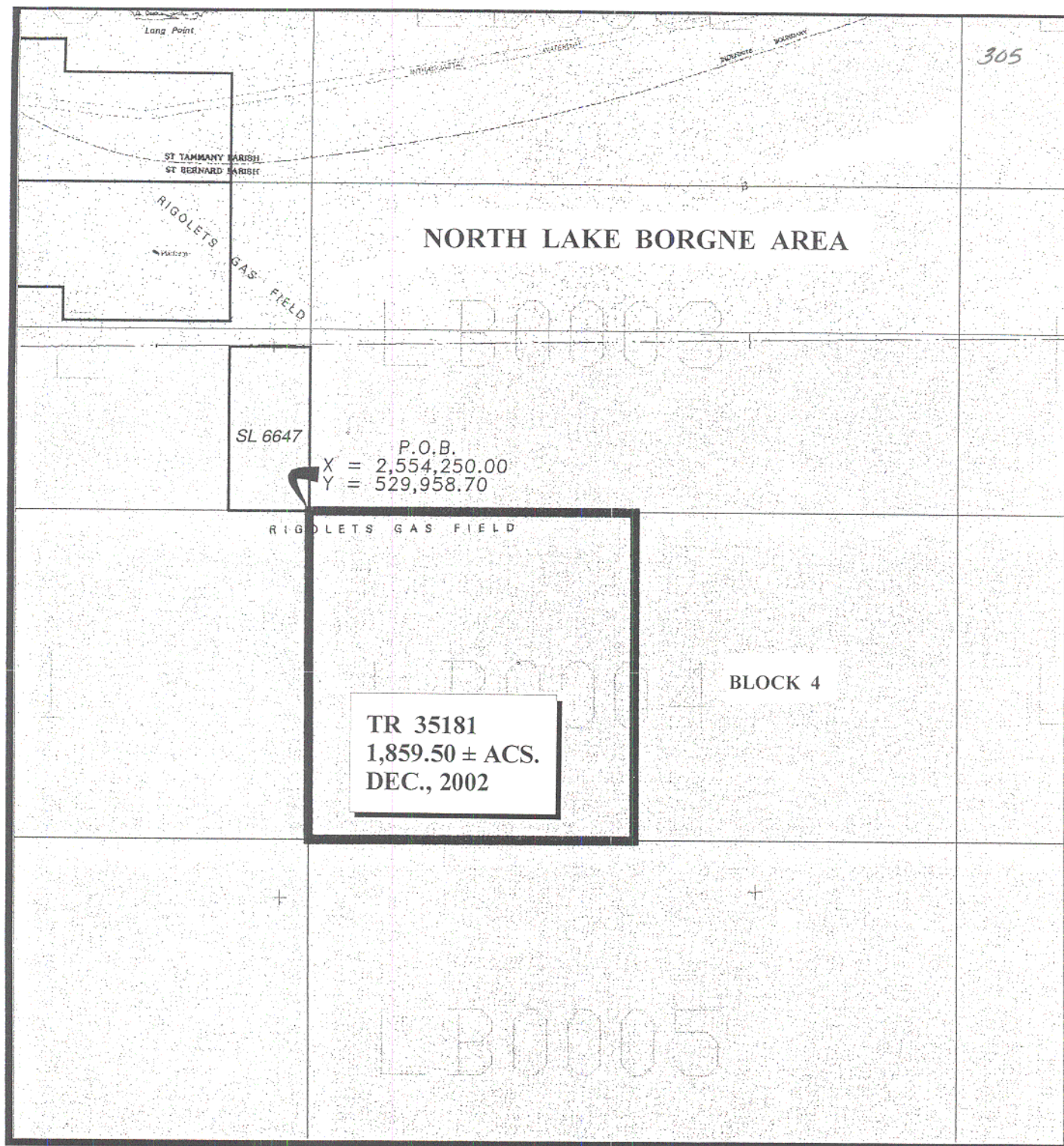
NOTE: The Department of Wildlife and Fisheries has designated certain areas in the coastal waters of the State of Louisiana as Oyster Seed Bed Areas. The exact location of those Seed Bed Areas must be obtained from the Department of Wildlife and Fisheries and any work done under a mineral lease from the State of Louisiana may necessarily be conducted in conformity with the rules and regulations promulgated by the said Department of Wildlife and Fisheries for Oyster Seed Bed Areas.

NOTE: The State of Louisiana does hereby reserve, and this lease shall be subject to, the imprescriptible right of surface use in the nature of a servitude in favor of the Department of Natural Resources, including its

Offices and Commissions, for the sole purpose of implementing, constructing, servicing and maintaining approved coastal zone management and/or restoration projects. Utilization of any and all rights derived under this lease by the mineral lessee, its agents, successors or assigns, shall not interfere with nor hinder the reasonable surface use by the Department of Natural Resources, its Offices or Commissions, as herein above reserved.

Applicant: H.I. McDonnough

Bidder	Cash Payment	Price / Acre	Rental	Oil	Gas	Other



**TRACT 35182 - Portion of Block 5, North Lake Borgne Area, St. Bernard Parish, Louisiana**

All of the lands now or formerly constituting the beds and bottoms of all water bodies of every nature and description, and all islands and other lands formed by accretion, where allowed by law, or by reliction, and excepting tax adjudicated lands, belonging to the State of Louisiana and not presently under mineral lease on December 11, 2002, situated in St. Bernard Parish, Louisiana, and more particularly described as follows: Beginning at the Northwest corner of Block 5, North Lake Borgne Area, having Coordinates of X = 2,554,250.00 and Y = 520,958.70; thence East 9,000.00 feet to a point having Coordinates of X = 2,563,250.00 and Y = 520,958.70; thence South 9,000.00 feet to a point having Coordinates of X = 2,563,250.00 and Y = 511,958.70; thence West 9,000.00 feet to a point having Coordinates of X = 2,554,250.00 and Y = 511,958.70; thence North 9,000.00 feet to the point of beginning, containing approximately **1,859.50 acres**, all as more particularly outlined on a plat on file in the Office of Mineral Resources, Department of Natural Resources, as provided by the applicant. All bearings, distances and coordinates are based on Louisiana Coordinate System of 1927, (North or South Zone), where applicable.

NOTE: The above description of the Tract nominated for lease has been provided and corrected, where required, exclusively by the nomination party. Any mineral lease selected from this Tract and awarded by the Louisiana State Mineral Board shall be without warranty of any kind, either express, implied, or statutory, including, but not limited to, the implied warranties of merchantability and fitness for a particular purpose. Should the mineral lease awarded by the Louisiana State Mineral Board be subsequently modified, cancelled or abrogated due to the existence of conflicting leases, operating agreements, private claims or other future obligations or conditions which may affect all or any portion of the leased Tract, it shall not relieve the Lessee of the obligation to pay any bonus due thereon to the Louisiana State Mineral Board, nor shall the Louisiana State Mineral Board be obligated to refund any consideration paid by the Lessor prior to such modification, cancellation, or abrogation, including, but not limited to, bonuses, rentals and royalties.

NOTE: The Office of Mineral Resources will require a minimum bonus of \$200 per acre and a minimum royalty of 22%.

NOTE: The Department of Wildlife and Fisheries has designated certain areas in the coastal waters of the State of Louisiana as Oyster Seed Bed Areas. The exact location of those Seed Bed Areas must be obtained from the Department of Wildlife and Fisheries and any work done under a mineral lease from the State of Louisiana may necessarily be conducted in conformity with the rules and regulations promulgated by the said Department of Wildlife and Fisheries for Oyster Seed Bed Areas.

NOTE: The State of Louisiana does hereby reserve, and this lease shall be subject to, the imprescriptible right of surface use in the nature of a servitude in favor of the Department of Natural Resources, including its

Offices and Commissions, for the sole purpose of implementing, constructing, servicing and maintaining approved coastal zone management and/or restoration projects. Utilization of any and all rights derived under this lease by the mineral lessee, its agents, successors or assigns, shall not interfere with nor hinder the reasonable surface use by the Department of Natural Resources, its Offices or Commissions, as herein above reserved.

Applicant: H.I. McDonnough

Bidder	Cash Payment	Price / Acre	Rental	Oil	Gas	Other



SL 6647

308

RIGOLETS GAS FIELD

## NORTH LAKE BORGNE AREA

P.O.B.  
X = 2,554,250.00  
Y = 520,958.70

TR 35182  
1,859 .50 ± ACS.  
DEC., 2002

BLOCK 5



NORTH LAKE BORGNE AREA  
St. Bernard Parish, Louisiana

SCALE: 1" = 4000'

**TRACT 35183 - Portion of Block 6, North Lake Borgne Area, St. Bernard Parish, Louisiana**

All of the lands now or formerly constituting the beds and bottoms of all water bodies of every nature and description, and all islands and other lands formed by accretion, where allowed by law, or by reliction, and excepting tax adjudicated lands, belonging to the State of Louisiana and not presently under mineral lease on December 11, 2002, situated in St. Bernard Parish, Louisiana, and more particularly described as follows: Beginning at the Northwest corner of Block 6, North Lake Borgne Area, having Coordinates of X = 2,554,250.00 and Y = 511,958.70; thence East 9,000.00 feet to a point having Coordinates of X = 2,563,250.00 and Y = 511,958.70; thence South 7,800.00 feet to a point having Coordinates of X = 2,563,250.00 and Y = 504,158.70; thence West 9,000.00 feet to a point having Coordinates of X = 2,554,250.00 and Y = 504,158.70; thence North 7,800.00 feet to the point of beginning, containing approximately **1,611.57 acres**, all as more particularly outlined on a plat on file in the Office of Mineral Resources, Department of Natural Resources, as provided by the applicant. All bearings, distances and coordinates are based on Louisiana Coordinate System of 1927, (North or South Zone), where applicable.

NOTE: The above description of the Tract nominated for lease has been provided and corrected, where required, exclusively by the nomination party. Any mineral lease selected from this Tract and awarded by the Louisiana State Mineral Board shall be without warranty of any kind, either express, implied, or statutory, including, but not limited to, the implied warranties of merchantability and fitness for a particular purpose. Should the mineral lease awarded by the Louisiana State Mineral Board be subsequently modified, cancelled or abrogated due to the existence of conflicting leases, operating agreements, private claims or other future obligations or conditions which may affect all or any portion of the leased Tract, it shall not relieve the Lessee of the obligation to pay any bonus due thereon to the Louisiana State Mineral Board, nor shall the Louisiana State Mineral Board be obligated to refund any consideration paid by the Lessor prior to such modification, cancellation, or abrogation, including, but not limited to, bonuses, rentals and royalties.

NOTE: The Office of Mineral Resources will require a minimum bonus of \$200 per acre and a minimum royalty of 22%.

NOTE: The Department of Wildlife and Fisheries has designated certain areas in the coastal waters of the State of Louisiana as Oyster Seed Bed Areas. The exact location of those Seed Bed Areas must be obtained from the Department of Wildlife and Fisheries and any work done under a mineral lease from the State of Louisiana may necessarily be conducted in conformity with the rules and regulations promulgated by the said Department of Wildlife and Fisheries for Oyster Seed Bed Areas.

NOTE: The State of Louisiana does hereby reserve, and this lease shall be subject to, the imprescriptible right of surface use in the nature of a servitude in favor of the Department of Natural Resources, including its



Offices and Commissions, for the sole purpose of implementing, constructing, servicing and maintaining approved coastal zone management and/or restoration projects. Utilization of any and all rights derived under this lease by the mineral lessee, its agents, successors or assigns, shall not interfere with nor hinder the reasonable surface use by the Department of Natural Resources, its Offices or Commissions, as herein above reserved.

Applicant: H.I. McDonnough

Bidder	Cash Payment	Price / Acre	Rental	Oil	Gas	Other

311

NORTH LAKE BORGNE AREA

P.O.B.  
X = 2,554,250.00  
Y = 511,958.70

L A K E

B O R G N E

TR 35183  
1,611.57 ± ACS.  
DEC., 2002

BLOCK 6



NORTH LAKE BORGNE AREA  
St. Bernard Parish, Louisiana

SCALE: 1" = 4000'