

TRACT 35114 - Caldwell Parish, Louisiana

All lands owned by, and not presently under mineral lease from the State of Louisiana on December 11, 2002 situated in Caldwell Parish, Louisiana, and being more fully described as follows: The Northwest Quarter of the Northwest Quarter of Section 29, Township 13 North, Range 2 East, containing approximately **40.00 acres**, all as more particularly outlined on a plat on file in the Office of Mineral Resources, Department of Natural Resources, as provided by the applicant.

NOTE: The above description of the Tract nominated for lease has been provided and corrected, where required, exclusively by the nomination party. Any mineral lease selected from this Tract and awarded by the Louisiana State Mineral Board shall be without warranty of any kind, either express, implied, or statutory, including, but not limited to, the implied warranties of merchantability and fitness for a particular purpose. Should the mineral lease awarded by the Louisiana State Mineral Board be subsequently modified, cancelled or abrogated due to the existence of conflicting leases, operating agreements, private claims or other future obligations or conditions which may affect all or any portion of the leased Tract, it shall not relieve the Lessee of the obligation to pay any bonus due thereon to the Louisiana State Mineral Board, nor shall the Louisiana State Mineral Board be obligated to refund any consideration paid by the Lessor prior to such modification, cancellation, or abrogation, including, but not limited to, bonuses, rentals and royalties.

Applicant: Paul Danner

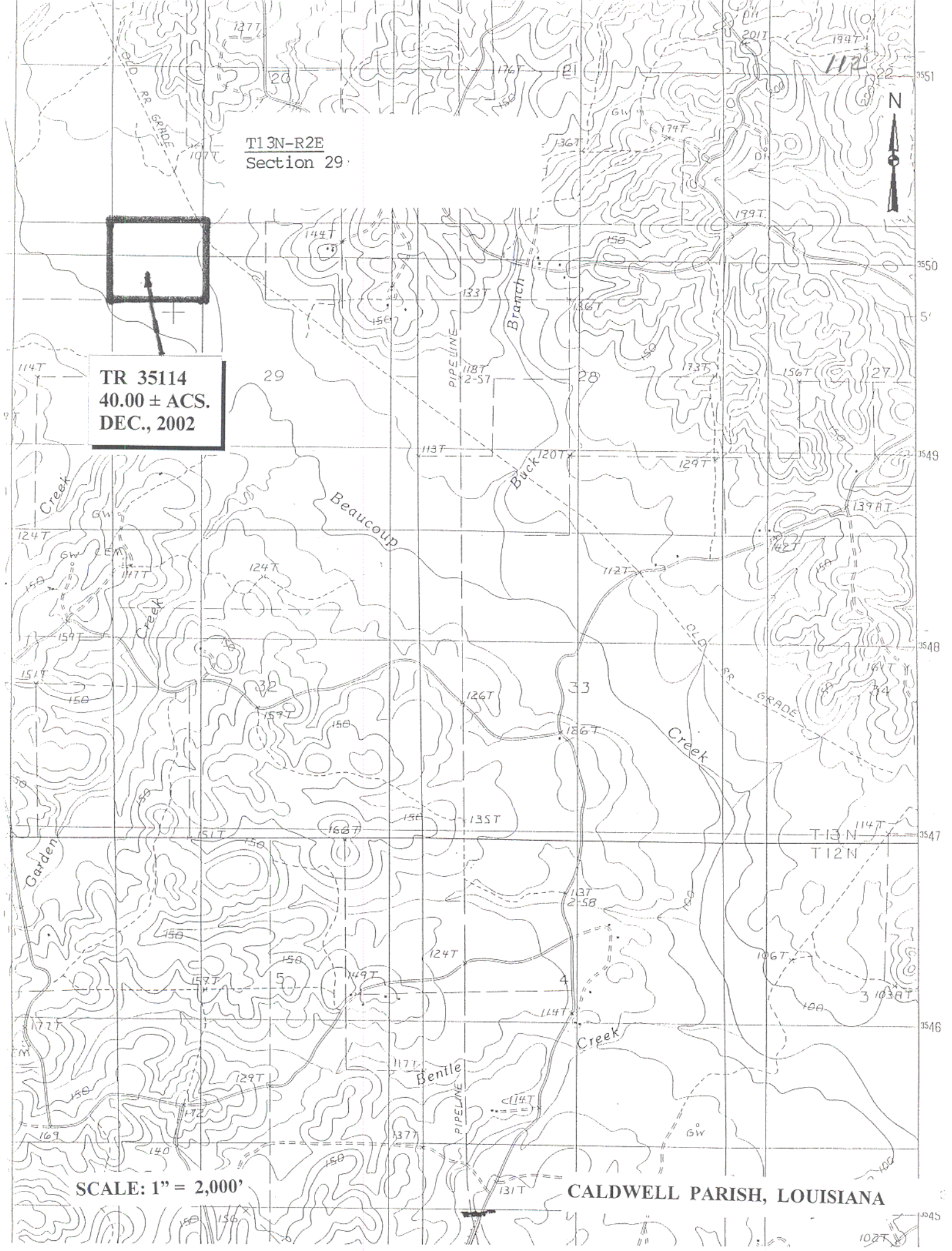
Bidder	Cash Payment	Price / Acre	Rental	Oil	Gas	Other

T13N-R2E
Section 29

TR 35114
40.00 ± ACS.
DEC., 2002

SCALE: 1" = 2,000'

CALDWELL PARISH, LOUISIANA



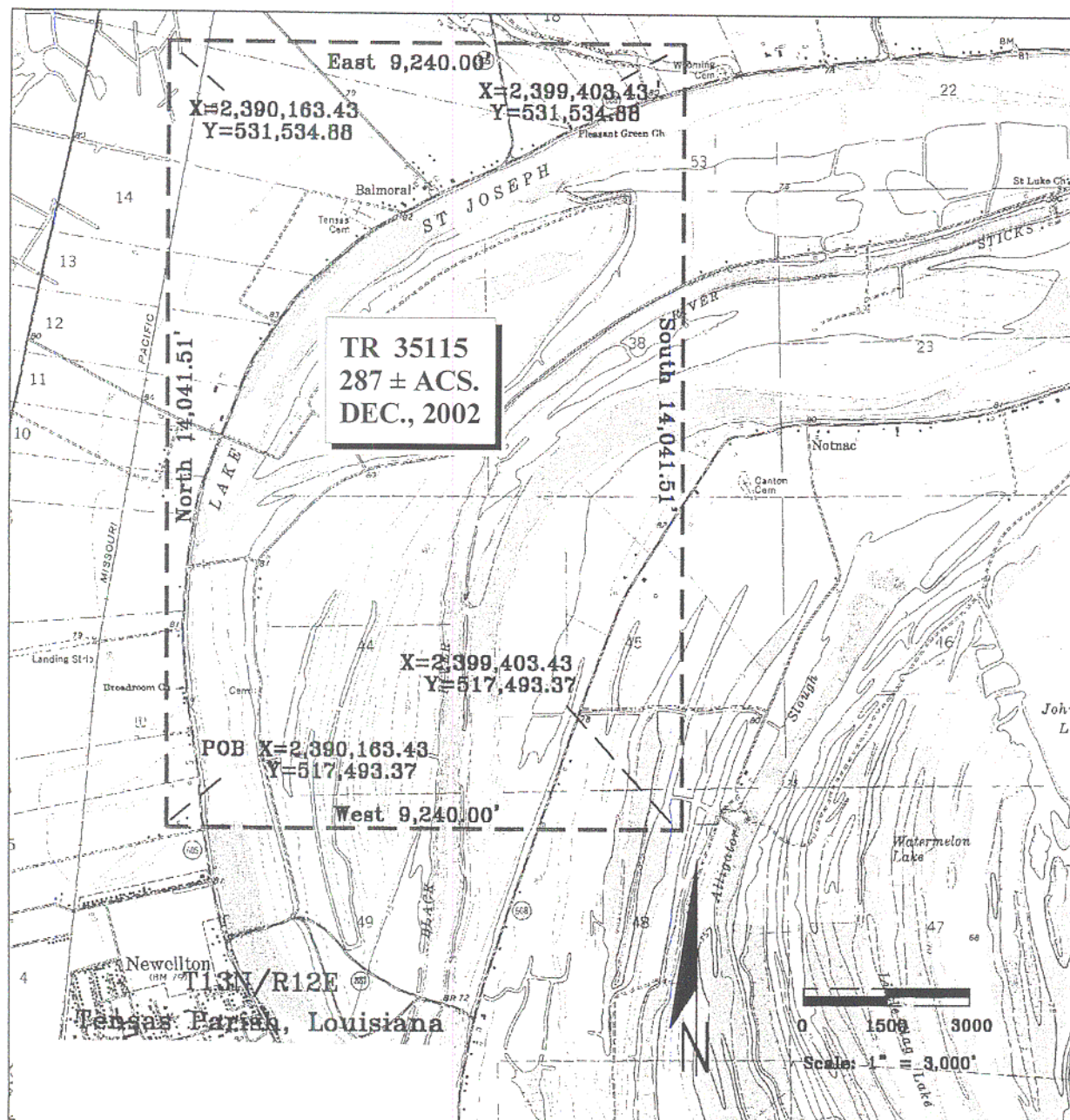
TRACT 35115 - Tensas Parish, Louisiana

All of the lands now or formerly constituting the beds and bottoms of all water bodies of every nature and description, and all islands and other lands formed by accretion, where allowed by law, or by reliction, and excepting tax adjudicated lands, belonging to the State of Louisiana and not presently under mineral lease on December 11, 2002, situated in Tensas Parish, Louisiana, and more particularly described as follows: Beginning at a point having Coordinates of X = 2,390,163.43 and Y = 517,493.37; thence North 14,041.51 feet to a point having Coordinates of X = 2,390,163.43 and Y = 531,534.88; thence East 9,240.00 feet to a point having Coordinates of X = 2,399,403.43 and Y = 531,534.88; thence South 14,041.51 feet to a point having Coordinates of X = 2,399,403.43 and Y = 517,493.37; thence West 9,240.00 feet to the point of beginning, containing approximately **287 acres**, all as more particularly outlined on a plat on file in the Office of Mineral Resources, Department of Natural Resources, as provided by the applicant. All bearings, distances and coordinates are based on Louisiana Coordinate System of 1927, (North or South Zone), where applicable.

NOTE: The above description of the Tract nominated for lease has been provided and corrected, where required, exclusively by the nomination party. Any mineral lease selected from this Tract and awarded by the Louisiana State Mineral Board shall be without warranty of any kind, either express, implied, or statutory, including, but not limited to, the implied warranties of merchantability and fitness for a particular purpose. Should the mineral lease awarded by the Louisiana State Mineral Board be subsequently modified, cancelled or abrogated due to the existence of conflicting leases, operating agreements, private claims or other future obligations or conditions which may affect all or any portion of the leased Tract, it shall not relieve the Lessee of the obligation to pay any bonus due thereon to the Louisiana State Mineral Board, nor shall the Louisiana State Mineral Board be obligated to refund any consideration paid by the Lessor prior to such modification, cancellation, or abrogation, including, but not limited to, bonuses, rentals and royalties.

Applicant: Mark A. O'Neal & Associates, Inc.

Bidder	Cash Payment	Price / Acre	Rental	Oil	Gas	Other



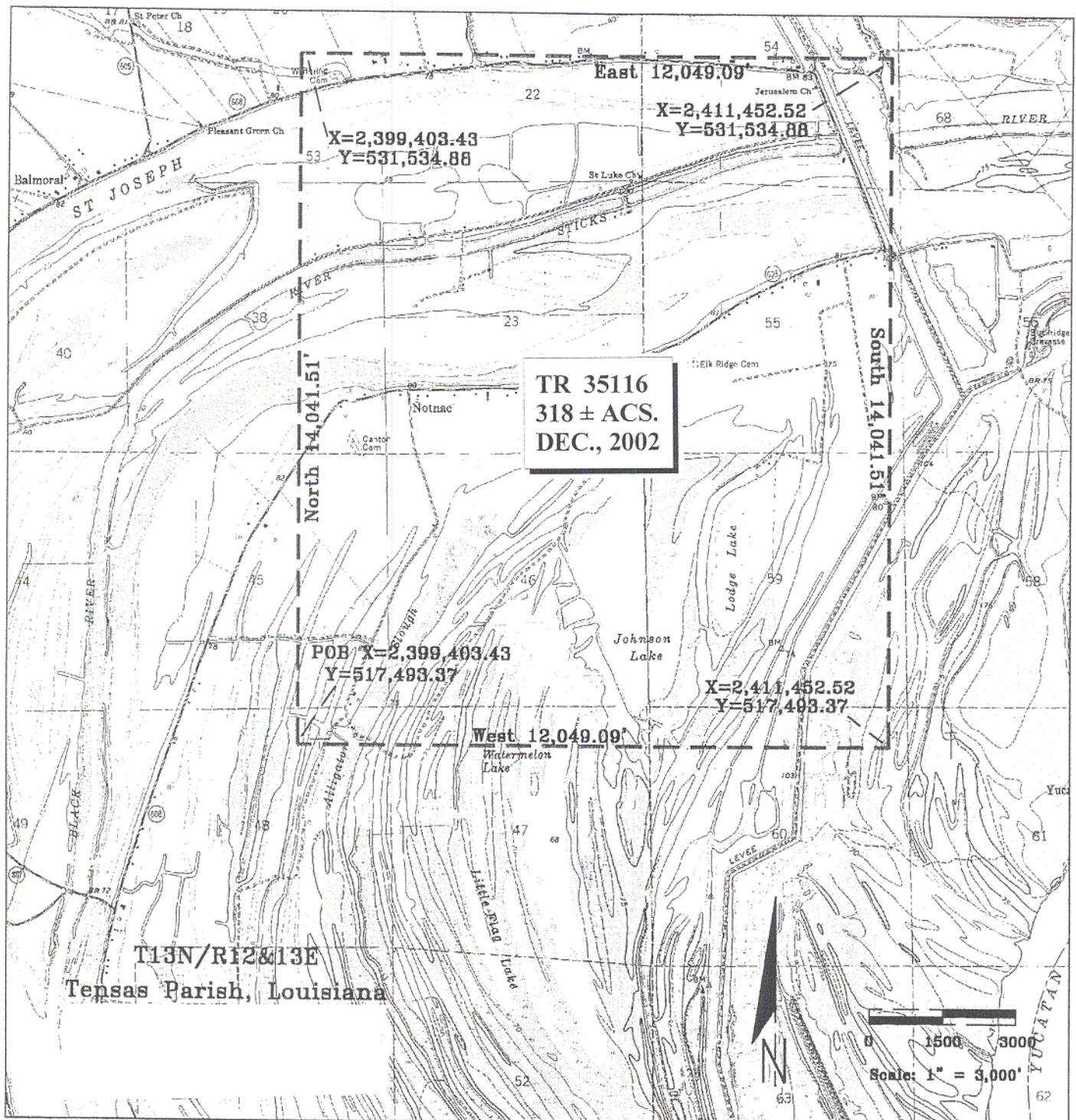
TRACT 35116 - Tensas Parish, Louisiana

All of the lands now or formerly constituting the beds and bottoms of all water bodies of every nature and description, and all islands and other lands formed by accretion, where allowed by law, or by reliction, and excepting tax adjudicated lands, belonging to the State of Louisiana and not presently under mineral lease on December 11, 2002, situated in Tensas Parish, Louisiana, and more particularly described as follows: Beginning at a point having Coordinates of X = 2,399,403.43 and Y = 517,493.37; thence North 14,041.51 feet to a point having Coordinates of X = 2,399,403.43 and Y = 531,534.88; thence East 12,049.09 feet to a point having Coordinates of X = 2,411,452.52 and Y = 531,534.88; thence South 14,041.51 feet to a point having Coordinates of X = 2,411,452.52 and Y = 517,493.37; thence West 12,049.09 feet to the point of beginning, containing approximately **318 acres**, all as more particularly outlined on a plat on file in the Office of Mineral Resources, Department of Natural Resources, as provided by the applicant. All bearings, distances and coordinates are based on Louisiana Coordinate System of 1927, (North or South Zone), where applicable.

NOTE: The above description of the Tract nominated for lease has been provided and corrected, where required, exclusively by the nomination party. Any mineral lease selected from this Tract and awarded by the Louisiana State Mineral Board shall be without warranty of any kind, either express, implied, or statutory, including, but not limited to, the implied warranties of merchantability and fitness for a particular purpose. Should the mineral lease awarded by the Louisiana State Mineral Board be subsequently modified, cancelled or abrogated due to the existence of conflicting leases, operating agreements, private claims or other future obligations or conditions which may affect all or any portion of the leased Tract, it shall not relieve the Lessee of the obligation to pay any bonus due thereon to the Louisiana State Mineral Board, nor shall the Louisiana State Mineral Board be obligated to refund any consideration paid by the Lessor prior to such modification, cancellation, or abrogation, including, but not limited to, bonuses, rentals and royalties.

Applicant: Mark A. O'Neal & Associates, Inc.

Bidder	Cash Payment	Price / Acre	Rental	Oil	Gas	Other



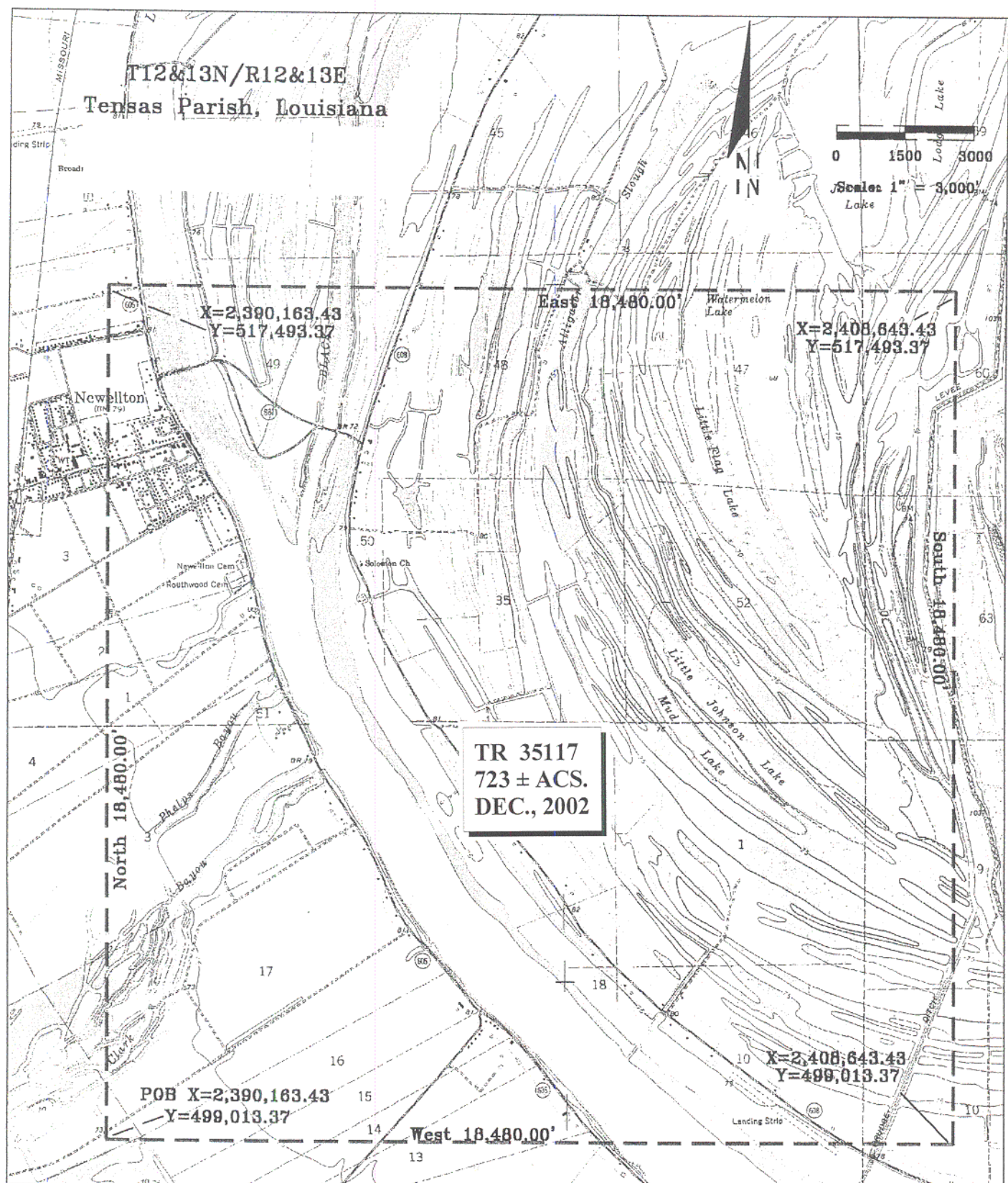
TRACT 35117 - Tensas Parish, Louisiana

All of the lands now or formerly constituting the beds and bottoms of all water bodies of every nature and description, and all islands and other lands formed by accretion, where allowed by law, or by reliction, and excepting tax adjudicated lands, belonging to the State of Louisiana and not presently under mineral lease on December 11, 2002, situated in Tensas Parish, Louisiana, and more particularly described as follows: Beginning at a point having Coordinates of X = 2,390,163.43 and Y = 499,013.37; thence North 18,480.00 feet to a point having Coordinates of X = 2,390,163.43 and Y = 517,493.37; thence East 18,480.00 feet to a point having Coordinates of X = 2,408,643.43 and Y = 517,493.37; thence South 18,480.00 feet to a point having Coordinates of X = 2,408,643.43 and Y = 499,013.37; thence West 18,480.00 feet to the point of beginning, containing approximately **651.95 acres**, all as more particularly outlined on a plat on file in the Office of Mineral Resources, Department of Natural Resources, as provided by the applicant. All bearings, distances and coordinates are based on Louisiana Coordinate System of 1927, (North or South Zone), where applicable.

NOTE: The above description of the Tract nominated for lease has been provided and corrected, where required, exclusively by the nomination party. Any mineral lease selected from this Tract and awarded by the Louisiana State Mineral Board shall be without warranty of any kind, either express, implied, or statutory, including, but not limited to, the implied warranties of merchantability and fitness for a particular purpose. Should the mineral lease awarded by the Louisiana State Mineral Board be subsequently modified, cancelled or abrogated due to the existence of conflicting leases, operating agreements, private claims or other future obligations or conditions which may affect all or any portion of the leased Tract, it shall not relieve the Lessee of the obligation to pay any bonus due thereon to the Louisiana State Mineral Board, nor shall the Louisiana State Mineral Board be obligated to refund any consideration paid by the Lessor prior to such modification, cancellation, or abrogation, including, but not limited to, bonuses, rentals and royalties.

Applicant: Mark A. O'Neal & Associates, Inc.

Bidder	Cash Payment	Price / Acre	Rental	Oil	Gas	Other



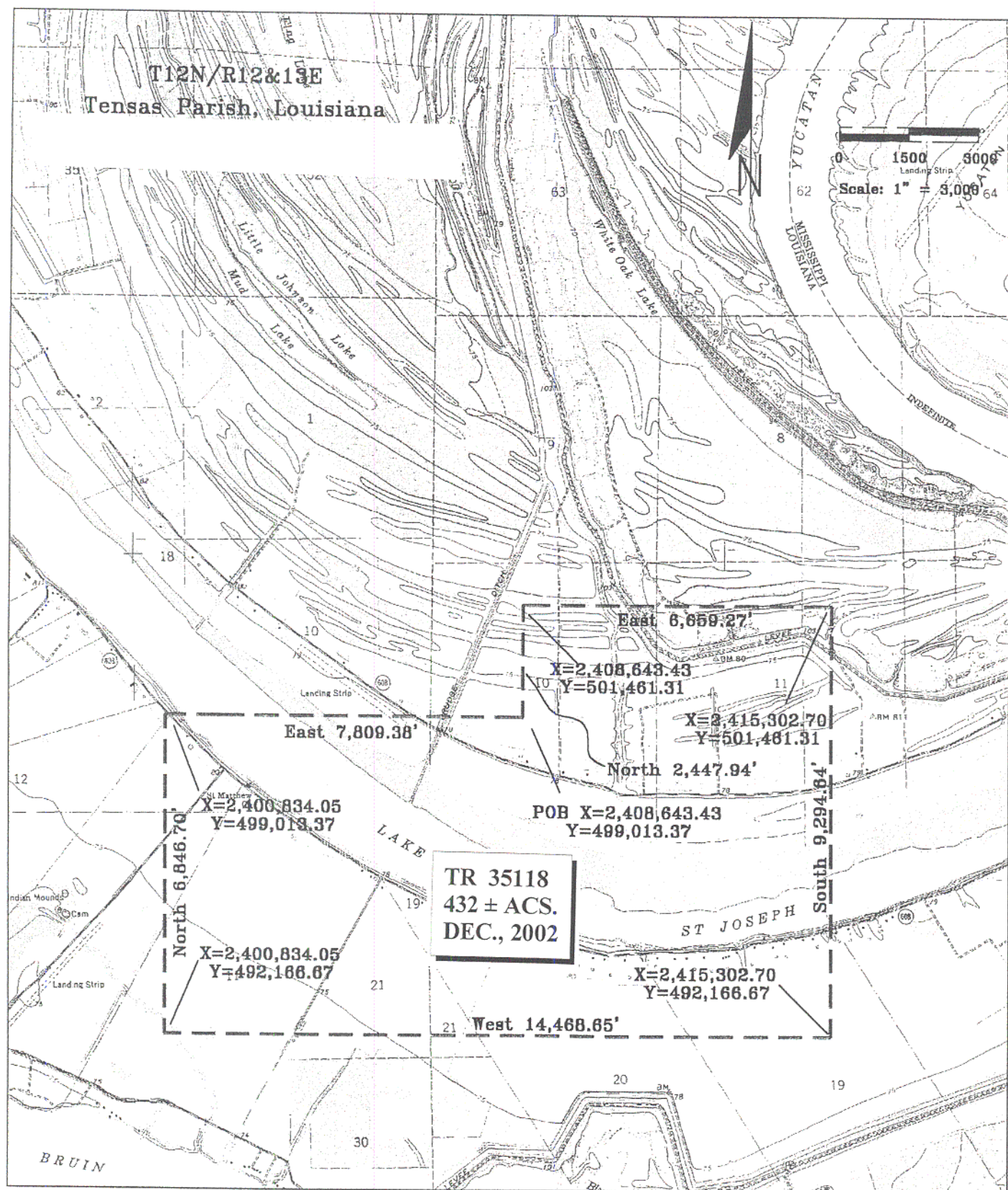
TRACT 35118 - Tensas Parish, Louisiana

All of the lands now or formerly constituting the beds and bottoms of all water bodies of every nature and description, and all islands and other lands formed by accretion, where allowed by law, or by reliction, and excepting tax adjudicated lands, belonging to the State of Louisiana and not presently under mineral lease on December 11, 2002, situated in Tensas Parish, Louisiana, and more particularly described as follows: Beginning at a point having Coordinates of X = 2,408,643.43 and Y = 499,013.37; thence North 2,447.94 feet to a point having Coordinates of X = 2,408,643.43 and Y = 501,461.31; thence East 6,659.27 feet to a point having Coordinates of X = 2,415,302.70 and Y = 501,461.31; thence South 9,294.64 feet to a point having Coordinates of X = 2,415,302.70 and Y = 492,166.67; thence West 14,468.65 feet to a point having Coordinates of X = 2,400,834.05 and Y = 492,166.67; thence North 6,846.70 feet to a point having Coordinates of X = 2,400,834.05 and Y = 499,013.37; thence East 7,809.38 feet to the point of beginning, containing approximately **432 acres**, all as more particularly outlined on a plat on file in the Office of Mineral Resources, Department of Natural Resources, as provided by the applicant. All bearings, distances and coordinates are based on Louisiana Coordinate System of 1927, (North or South Zone), where applicable.

NOTE: The above description of the Tract nominated for lease has been provided and corrected, where required, exclusively by the nomination party. Any mineral lease selected from this Tract and awarded by the Louisiana State Mineral Board shall be without warranty of any kind, either express, implied, or statutory, including, but not limited to, the implied warranties of merchantability and fitness for a particular purpose. Should the mineral lease awarded by the Louisiana State Mineral Board be subsequently modified, cancelled or abrogated due to the existence of conflicting leases, operating agreements, private claims or other future obligations or conditions which may affect all or any portion of the leased Tract, it shall not relieve the Lessee of the obligation to pay any bonus due thereon to the Louisiana State Mineral Board, nor shall the Louisiana State Mineral Board be obligated to refund any consideration paid by the Lessor prior to such modification, cancellation, or abrogation, including, but not limited to, bonuses, rentals and royalties.

Applicant: Mark A. O'Neal & Associates, Inc.

Bidder	Cash Payment	Price / Acre	Rental	Oil	Gas	Other



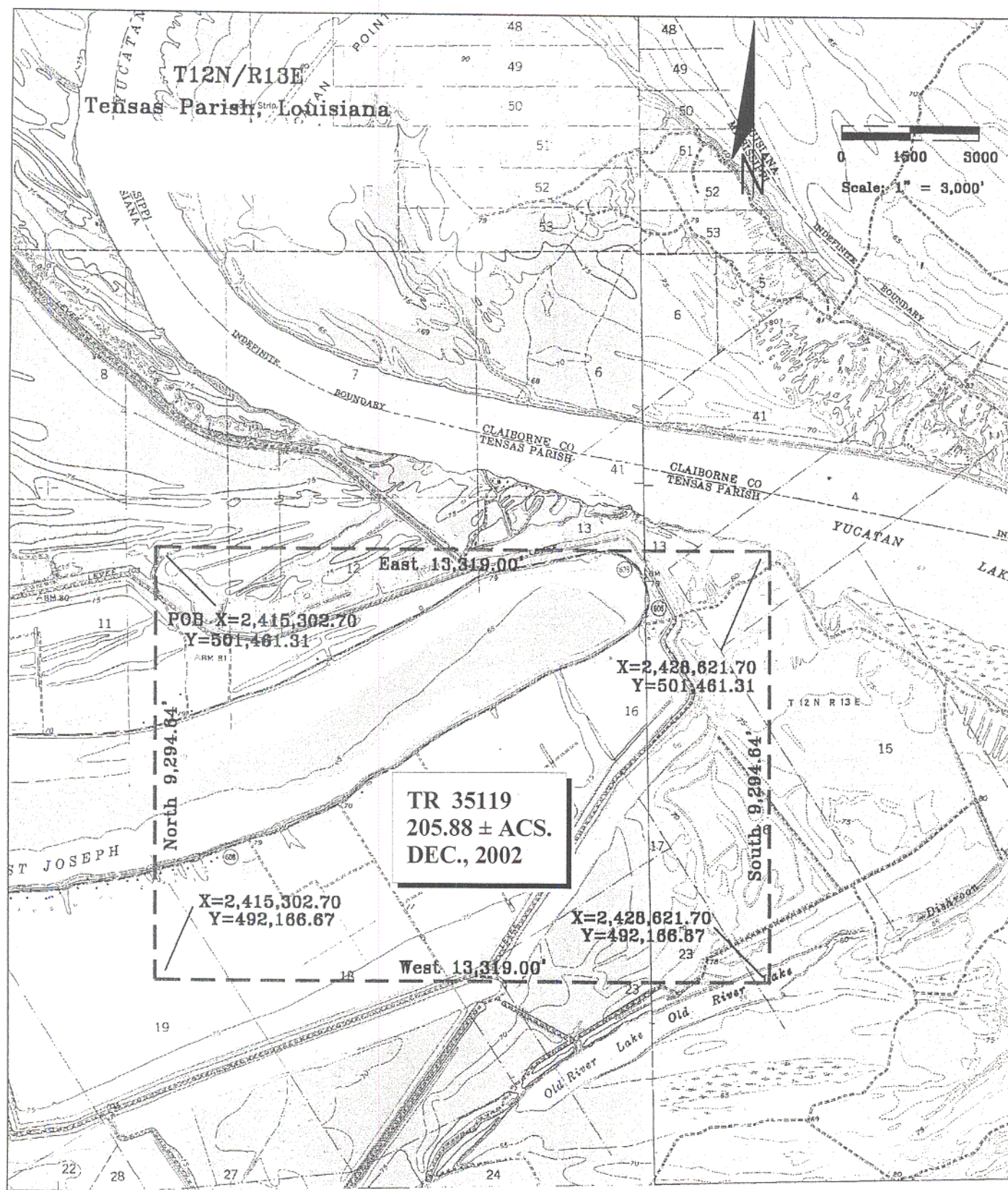
TRACT 35119 - Tensas Parish, Louisiana

All of the lands now or formerly constituting the beds and bottoms of all water bodies of every nature and description, and all islands and other lands formed by accretion, where allowed by law, or by reliction, and excepting tax adjudicated lands, belonging to the State of Louisiana and not presently under mineral lease on December 11, 2002, situated in Tensas Parish, Louisiana, and more particularly described as follows: Beginning at a point having Coordinates of X = 2,415,302.70 and Y = 501,461.31; thence East 13,319.00 feet to a point having Coordinates of X = 2,428,621.70 and Y = 501,461.31; thence South 9,294.64 feet to a point having Coordinates of X = 2,428,621.70 and Y = 492,166.67; thence West 13,319.00 feet to a point having Coordinates of X = 2,415,302.70 and Y = 492,166.67; thence North 9,294.64 feet to the Point of beginning, containing approximately **205.88 acres**, all as more particularly outlined on a plat on file in the Office of Mineral Resources, Department of Natural Resources, as provided by the applicant. All bearings, distances and coordinates are based on Louisiana Coordinate System of 1927, (North or South Zone), where applicable.

NOTE: The above description of the Tract nominated for lease has been provided and corrected, where required, exclusively by the nomination party. Any mineral lease selected from this Tract and awarded by the Louisiana State Mineral Board shall be without warranty of any kind, either express, implied, or statutory, including, but not limited to, the implied warranties of merchantability and fitness for a particular purpose. Should the mineral lease awarded by the Louisiana State Mineral Board be subsequently modified, cancelled or abrogated due to the existence of conflicting leases, operating agreements, private claims or other future obligations or conditions which may affect all or any portion of the leased Tract, it shall not relieve the Lessee of the obligation to pay any bonus due thereon to the Louisiana State Mineral Board, nor shall the Louisiana State Mineral Board be obligated to refund any consideration paid by the Lessor prior to such modification, cancellation, or abrogation, including, but not limited to, bonuses, rentals and royalties.

Applicant: Mark A. O'Neal & Associates, Inc.

Bidder	Cash Payment	Price / Acre	Rental	Oil	Gas	Other



TRACT 35120 - Calcasieu Parish, Louisiana

All of the lands now or formerly constituting the beds and bottoms of all water bodies of every nature and description and all islands and other lands formed by accretion, reliction and all other state lands except tax lands, owned by and not under mineral lease from the State of Louisiana on December 11, 2002, situated in Calcasieu Parish, Louisiana within the following described boundaries: Beginning at a point having Coordinates of X = 1,261,441.59 and Y = 537,900.00, thence North 10,000.00 feet to a point having Coordinates of X = 1,261,441.59 and Y = 547,900.00 thence West 13,000.00 feet to a point having Coordinates of X = 1,248,441.59 and Y = 547,900.00, thence South 10,000.00 feet to a point having Coordinates of X = 1,248,441.59 and Y = 537,900.00, thence East 13,000.00 feet to the point of beginning, **LESS AND EXCEPT** that portion thereof, if any, covered by State Lease No. 16948, containing approximately **211 acres, LESS AND EXCEPT** that portion thereof, if any, located West of the boundary line between the States of Texas and Louisiana as determined by the report of the Special Master and adjudicated by the Supreme Court of the United States in litigation styled **Texas v. Louisiana, et al No. 36 Original**, or as otherwise approved by said court, all as more particularly outlined on a plat on file in the Office of Mineral Resources, Department of Natural Resources, as provided by the applicant. All bearings, distances and coordinates are based on Louisiana Coordinate System of 1927, (North or South Zone), where applicable.

NOTE: The above description of the Tract nominated for lease has been provided and corrected, where required, exclusively by the nomination party. Any mineral lease selected from this Tract and awarded by the Louisiana State Mineral Board shall be without warranty of any kind, either express, implied, or statutory, including, but not limited to, the implied warranties of merchantability and fitness for a particular purpose. Should the mineral lease awarded by the Louisiana State Mineral Board be subsequently modified, cancelled or abrogated due to the existence of conflicting leases, operating agreements, private claims or other future obligations or conditions which may affect all or any portion of the leased Tract, it shall not relieve the Lessee of the obligation to pay any bonus due thereon to the Louisiana State Mineral Board, nor shall the Louisiana State Mineral Board be obligated to refund any consideration paid by the Lessor prior to such modification, cancellation, or abrogation, including, but not limited to, bonuses, rentals and royalties.

Applicant: Angelle & Donohue Oil & Gas Properties, Inc.

Bidder	Cash Payment	Price / Acre	Rental	Oil	Gas	Other

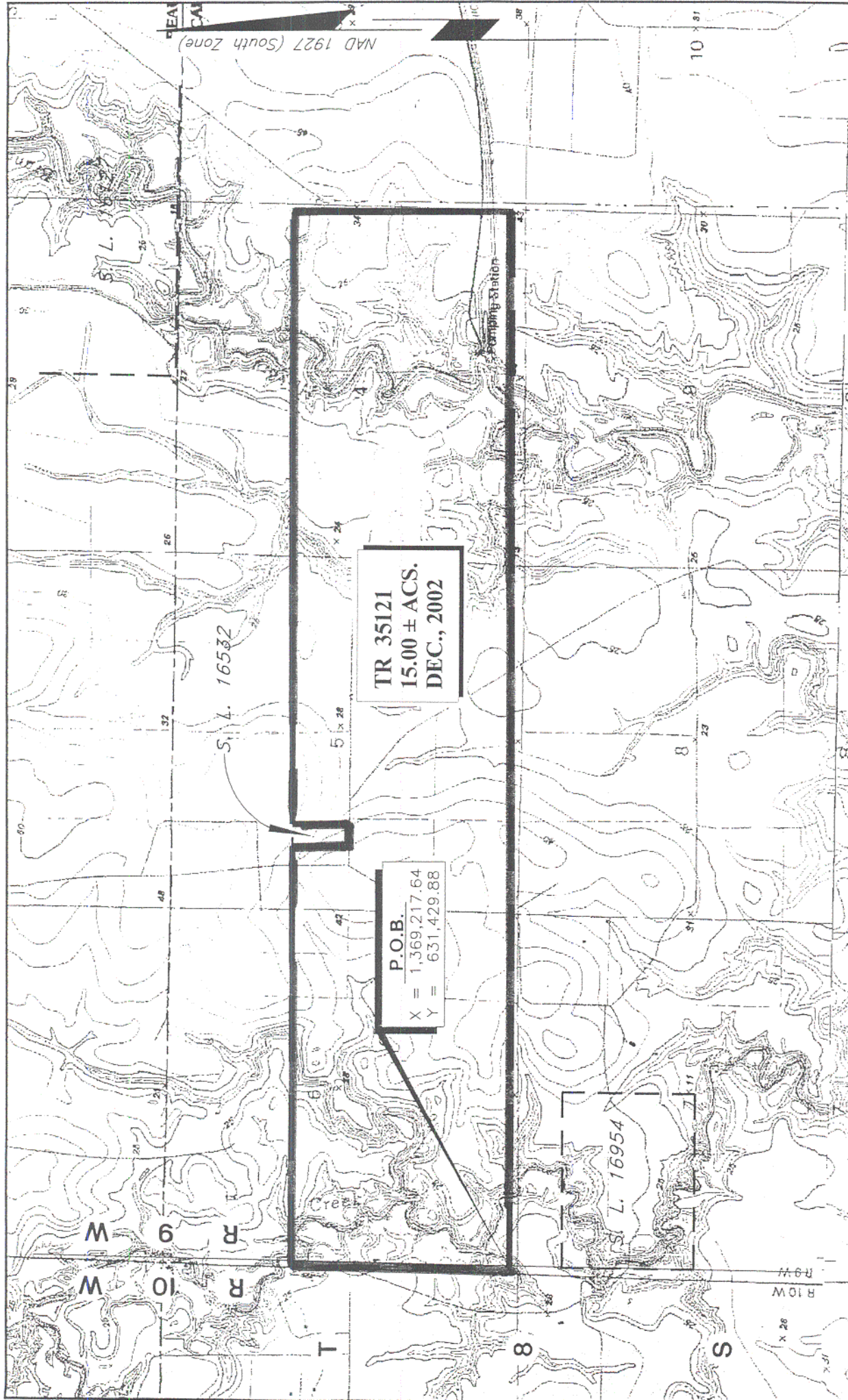
TRACT 35121 - Calcasieu Parish, Louisiana

All of the lands now or formerly constituting the beds and bottoms of all water bodies of every nature and description, and all islands and other lands formed by accretion, where allowed by law, or by reliction, and excepting tax adjudicated lands, belonging to the State of Louisiana and not presently under mineral lease on December 11, 2002, situated in Calcasieu Parish, Louisiana, and more particularly described as follows: Beginning at a point having Coordinates of X = 1,369,217.64 and Y = 631,429.88; thence North 3,356.74 feet to a point having Coordinates of X = 1,369,217.64 and Y = 634,786.62; thence Easterly approximately 6,302.00 feet to a point being the Northwest corner of State Lease No. 16532, as amended; thence Southerly approximately 865.00 feet with the Western boundary of the said State Lease No. 16532 to its Southwest corner; thence Easterly approximately 340.00 feet with the Southern boundary of State Lease No. 16532; thence Northerly approximately 865.00 feet with the Western boundary of said State Lease No. 16532 to its Northeast corner; thence Easterly approximately 9,205.00 feet to a point having Coordinates of X = 1,385,057.64 and Y = 634,786.62; thence South 3,356.74 feet to a point having Coordinates of X = 1,385,057.64 and Y = 631,429.88; thence West 15,840.00 feet to the point of beginning, **LESS AND EXCEPT**, if any, that portion of State Lease No. 16532, as amended, that may lie within the above described tract, containing approximately **15.00 acres**, all as more particularly outlined on a plat on file in the Office of Mineral Resources, Department of Natural Resources, as provided by the applicant. All bearings, distances and coordinates are based on Louisiana Coordinate System of 1927, (North or South Zone), where applicable.

NOTE: The above description of the Tract nominated for lease has been provided and corrected, where required, exclusively by the nomination party. Any mineral lease selected from this Tract and awarded by the Louisiana State Mineral Board shall be without warranty of any kind, either express, implied, or statutory, including, but not limited to, the implied warranties of merchantability and fitness for a particular purpose. Should the mineral lease awarded by the Louisiana State Mineral Board be subsequently modified, cancelled or abrogated due to the existence of conflicting leases, operating agreements, private claims or other future obligations or conditions which may affect all or any portion of the leased Tract, it shall not relieve the Lessee of the obligation to pay any bonus due thereon to the Louisiana State Mineral Board, nor shall the Louisiana State Mineral Board be obligated to refund any consideration paid by the Lessor prior to such modification, cancellation, or abrogation, including, but not limited to, bonuses, rentals and royalties.

Applicant: John P. Holbrook

Bidder	Cash Payment	Price / Acre	Rental	Oil	Gas	Other



TR 35121
15.00 ± ACS.
DEC., 2002

P.O.B.
X = 1,369,217.64
Y = 631,429.88

128

CALCASIEU PARISH, LOUISIANA

SCALE : 1" = 2000'

TRACT 35122 - Calcasieu Parish, Louisiana

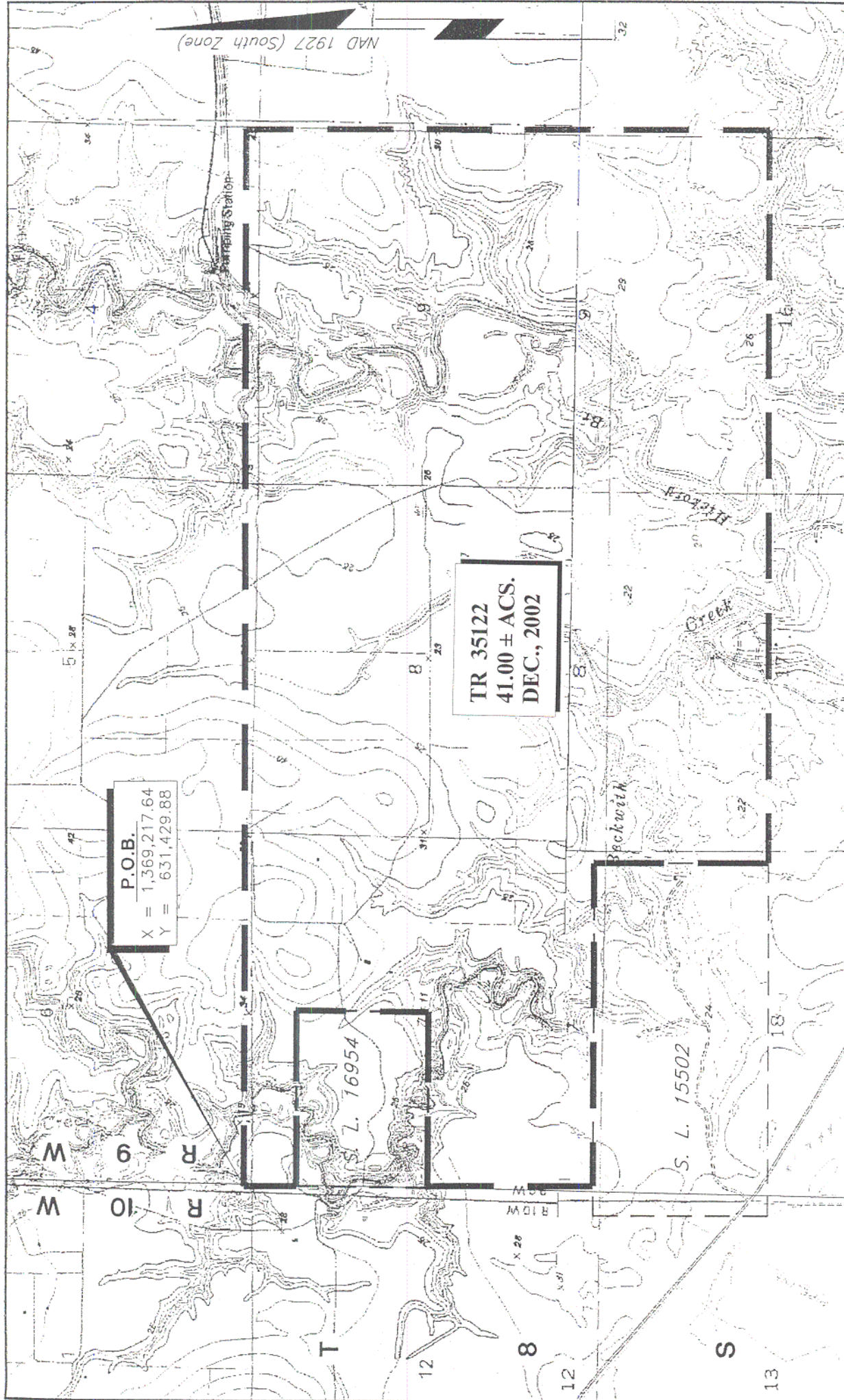
All of the lands now or formerly constituting the beds and bottoms of all water bodies of every nature and description, and all islands and other lands formed by accretion, where allowed by law, or by reliction, and excepting tax adjudicated lands, belonging to the State of Louisiana and not presently under mineral lease on December 11, 2002, situated in Calcasieu Parish, Louisiana, and more particularly described as follows: Beginning at a point having Coordinates of X = 1,369,217.64 and Y = 631,429.88; thence East 15,840.00 feet to a point having Coordinates of X = 1,385,057.64 and Y = 631,429.88; thence South 7,920.00 feet to a having Coordinates of X = 1,385,057.64 and Y = 623,509.88; thence West 11,004.18 feet to the Southeast corner of State Lease No. 15502, as amended, having Coordinates of X = 1,374,053.46 and Y = 623,509.96; thence North 2,640.00 feet with the Western boundary of the said State Lease No. 15502 to its Northeast corner having Coordinates of X = 1,374,053.46 and Y = 626,149.96; thence West 4,835.82 feet with the North boundary of said State Lease No. 15502 to a point having Coordinates of X = 1,369,217.64 and Y = 626,149.96; thence North 2,503.57 feet to a point on the South boundary of State Lease No. 16954, as amended, having Coordinates of X = 1,369,217.64 and Y = 628,653.53; thence South 89 degrees 49 minutes 41 seconds East 2,607.35 feet with the Southern boundary of said State Lease No. 16954 to its Southeast corner having Coordinates of X = 1,371,824.98 and Y = 628,645.71; thence North 00 degrees 47 minutes 13 seconds East 1,996.26 feet with the East boundary of said State Lease No. 16954 to its Northeast corner having Coordinates of X = 1,371,852.40 and Y = 630,641.78; thence South 89 degrees 50 minutes 28 seconds West 2,634.77 feet with the North boundary of said State Lease No. 16954 having Coordinates of X = 1,369,217.64 and Y = 630,634.47; thence North 795.41 feet to the point of beginning, **LESS AND EXCEPT**, if any, that portion of State Lease No. 15502, as amended, that may lie within the above described tract, containing approximately **41.00 acres**, all as more particularly outlined on a plat on file in the Office of Mineral Resources, Department of Natural Resources, as provided by the applicant. All bearings, distances and coordinates are based on Louisiana Coordinate System of 1927, (North or South Zone), where applicable.

NOTE: The above description of the Tract nominated for lease has been provided and corrected, where required, exclusively by the nomination party. Any mineral lease selected from this Tract and awarded by the Louisiana State Mineral Board shall be without warranty of any kind, either express, implied, or statutory, including, but not limited to, the implied warranties of merchantability and fitness for a particular purpose. Should the mineral lease awarded by the Louisiana State Mineral Board be subsequently modified, cancelled or abrogated due to the existence of conflicting leases, operating agreements, private claims or other future obligations or conditions which may affect all or any portion of the leased Tract, it shall not relieve the Lessee of the obligation to pay any bonus due thereon to the Louisiana State Mineral Board, nor shall the Louisiana State Mineral Board be obligated to refund any consideration

paid by the Lessor prior to such modification, cancellation, or abrogation, including, but not limited to, bonuses, rentals and royalties.

Applicant: John P. Holbrook

Bidder	Cash Payment	Price / Acre	Rental	Oil	Gas	Other



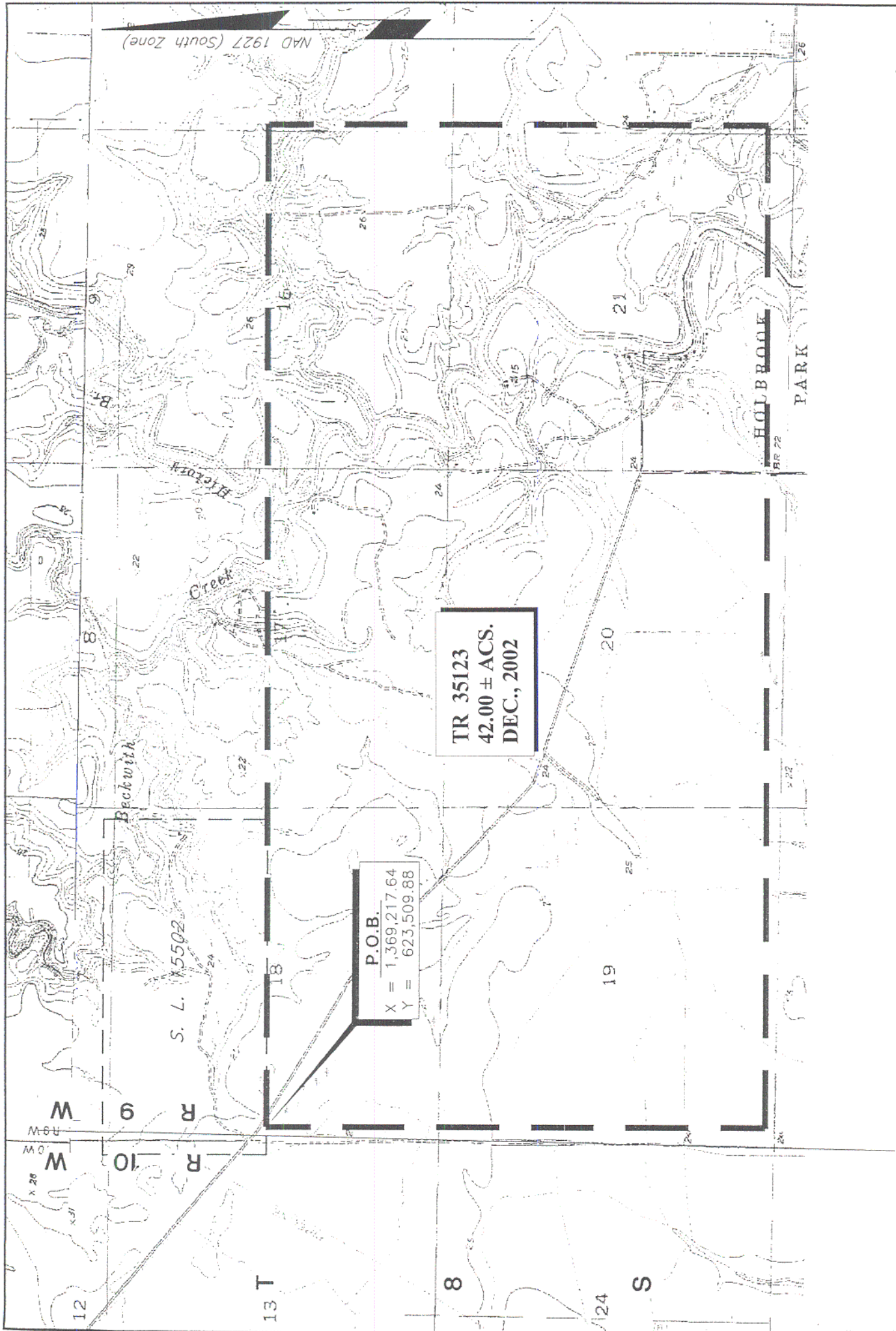
TRACT 35123 - Calcasieu Parish, Louisiana

All of the lands now or formerly constituting the beds and bottoms of all water bodies of every nature and description, and all islands and other lands formed by accretion, where allowed by law, or by reliction, and excepting tax adjudicated lands, belonging to the State of Louisiana and not presently under mineral lease on December 11, 2002, situated in Calcasieu Parish, Louisiana, and more particularly described as follows: Beginning at a point on the Southern boundary of State Lease No. 15502, as amended, having Coordinates of X = 1,369,217.64 and Y = 623,509.88; thence East 15,840.00 feet with the Southern boundary of the above said State Lease No. 15502 and an extension thereof to a point having Coordinates of X = 1,385,057.64 and Y = 623,509.88; thence South 7,920.00 feet to a having coordinates of X = 1,385,057.64 and Y = 615,589.88; thence West 15,840.00 feet to a point having Coordinates of X = 1,369,217.64 and Y = 615,589.88; thence North 7,920.00 feet to the point of beginning, **LESS AND EXCEPT**, if any, that portion of State Lease No. 15502 that may lie within the above described tract, containing approximately **42.00 acres**, all as more particularly outlined on a plat on file in the Office of Mineral Resources, Department of Natural Resources, as provided by the applicant. All bearings, distances and coordinates are based on Louisiana Coordinate System of 1927, (North or South Zone), where applicable.

NOTE: The above description of the Tract nominated for lease has been provided and corrected, where required, exclusively by the nomination party. Any mineral lease selected from this Tract and awarded by the Louisiana State Mineral Board shall be without warranty of any kind, either express, implied, or statutory, including, but not limited to, the implied warranties of merchantability and fitness for a particular purpose. Should the mineral lease awarded by the Louisiana State Mineral Board be subsequently modified, cancelled or abrogated due to the existence of conflicting leases, operating agreements, private claims or other future obligations or conditions which may affect all or any portion of the leased Tract, it shall not relieve the Lessee of the obligation to pay any bonus due thereon to the Louisiana State Mineral Board, not shall the Louisiana State Mineral Board be obligated to refund any consideration paid by the Lessor prior to such modification, cancellation, or abrogation, including, but not limited to, bonuses, rentals and royalties.

Applicant: John P. Holbrook

Bidder	Cash Payment	Price / Acre	Rental	Oil	Gas	Other



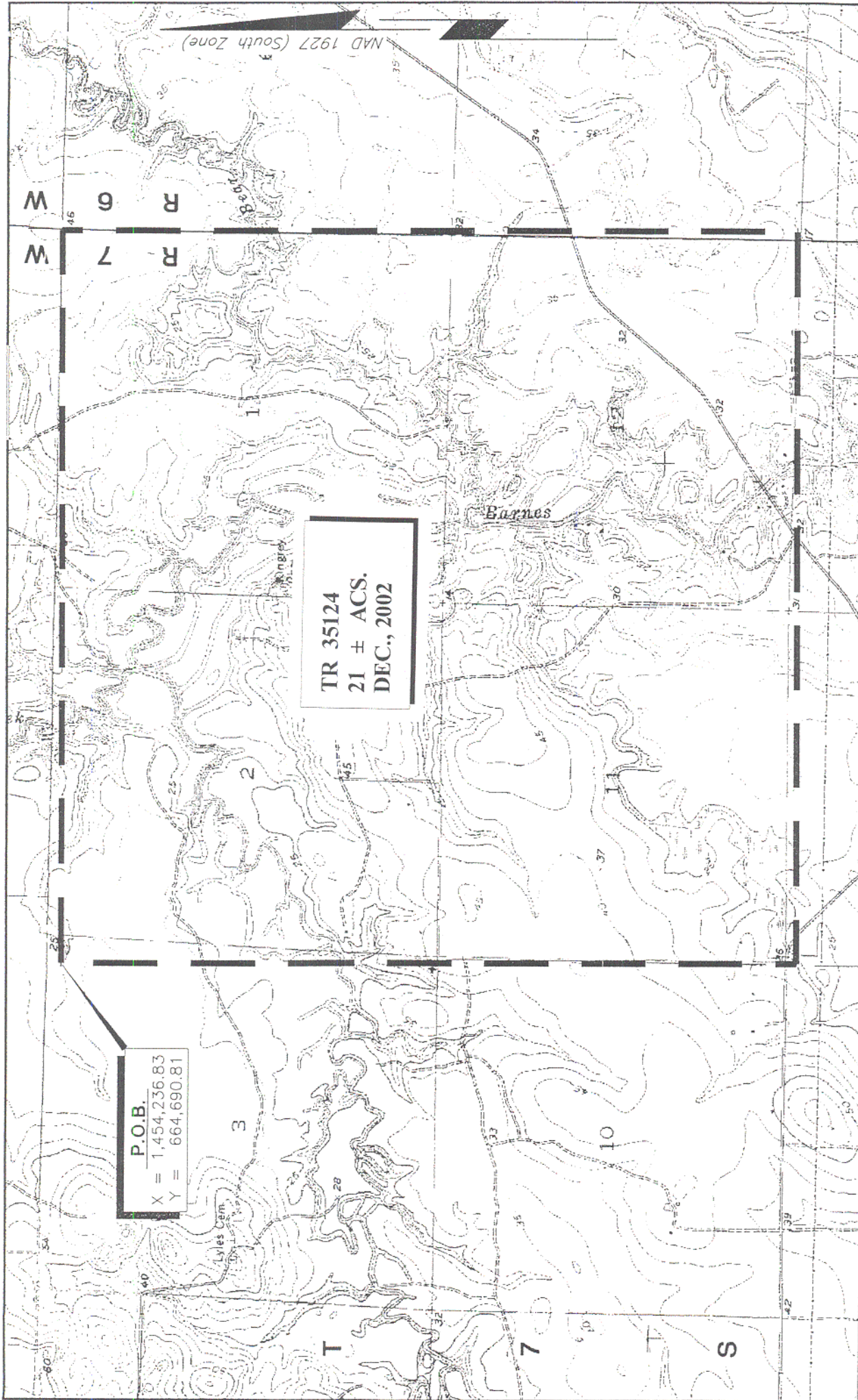
TRACT 35124 - Allen and Jefferson Davis Parishes, Louisiana

All of the lands now or formerly constituting the beds and bottoms of all water bodies of every nature and description, and all islands and other lands formed by accretion, where allowed by law, or by reliction, and excepting tax adjudicated lands, belonging to the State of Louisiana and not presently under mineral lease on December 11, 2002, situated in Allen and Jefferson Davis Parishes, Louisiana, and more particularly described as follows: Beginning at a point having Coordinates of X = 1,454,236.83 and Y = 664,690.81; thence East 11,000.00 feet to a point having Coordinates of X = 1,465,236.83 and Y = 664,690.81; thence South 11,140.00 feet to a point having Coordinates of X = 1,465,236.83 and Y = 653,550.81; thence West 11,000.00 feet to a point having Coordinates of X = 1,454,236.83 and Y = 653,550.81; thence North 11,140.00 feet to the point of beginning, containing approximately **21 acres**, all as more particularly outlined on a plat on file in the Office of Mineral Resources, Department of Natural Resources, as provided by the applicant. All bearings, distances and coordinates are based on Louisiana Coordinate System of 1927, (North or South Zone), where applicable.

NOTE: The above description of the Tract nominated for lease has been provided and corrected, where required, exclusively by the nomination party. Any mineral lease selected from this Tract and awarded by the Louisiana State Mineral Board shall be without warranty of any kind, either express, implied, or statutory, including, but not limited to, the implied warranties of merchantability and fitness for a particular purpose. Should the mineral lease awarded by the Louisiana State Mineral Board be subsequently modified, cancelled or abrogated due to the existence of conflicting leases, operating agreements, private claims or other future obligations or conditions which may affect all or any portion of the leased Tract, it shall not relieve the Lessee of the obligation to pay any bonus due thereon to the Louisiana State Mineral Board, nor shall the Louisiana State Mineral Board be obligated to refund any consideration paid by the Lessor prior to such modification, cancellation, or abrogation, including, but not limited to, bonuses, rentals and royalties.

Applicant: M.J. Armstrong

Bidder	Cash Payment	Price / Acre	Rental	Oil	Gas	Other



135

ALLEN AND JEFFERSON DAVIS PARISHES, LOUISIANA

SCALE : 1" = 2000'

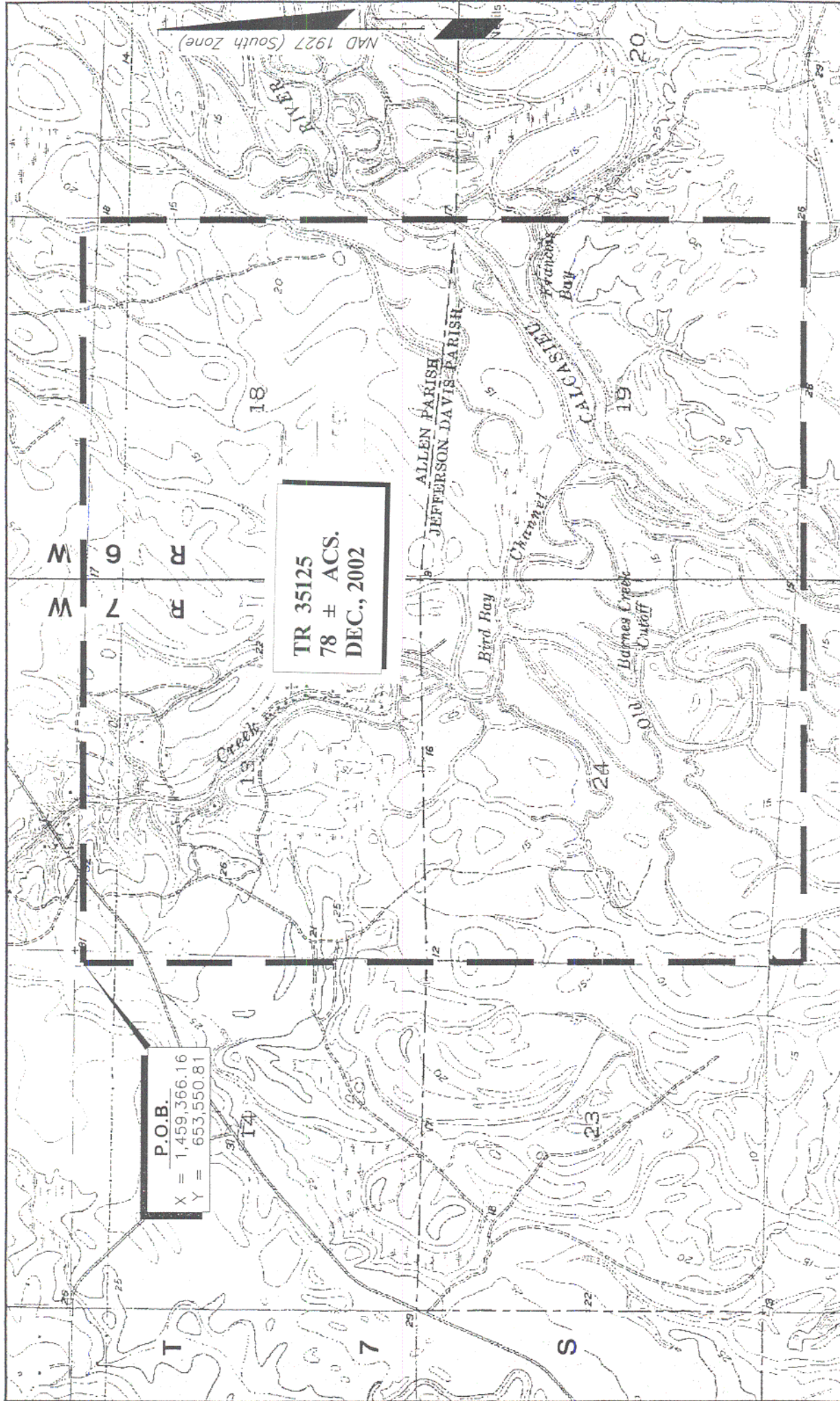
TRACT 35125 - Allen and Jefferson Davis Parishes, Louisiana

All of the lands now or formerly constituting the beds and bottoms of all water bodies of every nature and description, and all islands and other lands formed by accretion, where allowed by law, or by reliction, and excepting tax adjudicated lands, belonging to the State of Louisiana and not presently under mineral lease on December 11, 2002, situated in Allen and Jefferson Davis Parishes, Louisiana, and more particularly described as follows: Beginning at a point having Coordinates of X = 1,459,366.16 and Y = 653,550.81; thence East 11,140.00 feet to a point having Coordinates of X = 1,470,506.16 and Y = 653,550.81; thence South 10,900.00 feet to a point having Coordinates of X = 1,470,506.16 and Y = 642,650.81; thence West 11,140.00 feet to a point having Coordinates of X = 1,459,366.16 and Y = 642,650.81; thence North 10,900.00 feet to the point of beginning, containing approximately **78 acres**, all as more particularly outlined on a plat on file in the Office of Mineral Resources, Department of Natural Resources, as provided by the applicant. All bearings, distances and coordinates are based on Louisiana Coordinate System of 1927, (North or South Zone), where applicable.

NOTE: The above description of the Tract nominated for lease has been provided and corrected, where required, exclusively by the nomination party. Any mineral lease selected from this Tract and awarded by the Louisiana State Mineral Board shall be without warranty of any kind, either express, implied, or statutory, including, but not limited to, the implied warranties of merchantability and fitness for a particular purpose. Should the mineral lease awarded by the Louisiana State Mineral Board be subsequently modified, cancelled or abrogated due to the existence of conflicting leases, operating agreements, private claims or other future obligations or conditions which may affect all or any portion of the leased Tract, it shall not relieve the Lessee of the obligation to pay any bonus due thereon to the Louisiana State Mineral Board, nor shall the Louisiana State Mineral Board be obligated to refund any consideration paid by the Lessor prior to such modification, cancellation, or abrogation, including, but not limited to, bonuses, rentals and royalties.

Applicant: M.J. Armstrong

Bidder	Cash Payment	Price / Acre	Rental	Oil	Gas	Other



TRACT 35126 - Acadia and Vermilion Parishes, Louisiana

All of the lands now or formerly constituting the beds and bottoms of all water bodies of every nature and description, and all islands and other lands formed by accretion, where allowed by law, or by reliction, and excepting tax adjudicated lands, belonging to the State of Louisiana and not presently under mineral lease on December 11, 2002, situated in Acadia and Vermilion Parishes, Louisiana, and more particularly described as follows: Beginning at a point having Coordinates of X = 1,693,080.00 and Y = 514,800.00; thence West 18,480.00 feet to a point having Coordinates of X = 1,674,600.00 and Y = 514,800.00; thence North 4,936.52 feet to a point having Coordinates of X = 1,674,600.00 and Y = 519,736.52; thence East 1,627.53 feet to the West corner of State Lease No. 15911, as amended having Coordinates of X = 1,676,227.53 and Y = 519,736.52; thence along the boundary of said State Lease No. 15911 the following courses: Southeasterly along an arc having a radius of 600.00 feet and a chord bearing of South 83 degrees 05 minutes 17 seconds East 128.55 feet, Southeasterly along an arc having a radius of 5,000.00 feet and a chord bearing of South 89 degrees 34 minutes 03 seconds East 278.11 feet, Southeasterly along an arc having a radius of 6,500.00 feet and a chord bearing of South 87 degrees 17 minutes 28 seconds East 907.71 feet, South 82 degrees 29 minutes 24 seconds East 742.17 feet, Southeasterly along an arc having a radius of 3,000.00 feet and a chord bearing of South 87 degrees 05 minutes 33 seconds East 451.48 feet, Northeasterly along an arc having a radius of 1,100.00 feet and a chord bearing of North 72 degrees 53 minutes 14 seconds East 505.69 feet, Northeasterly along an arc having a radius of 2,100.00 feet and a chord bearing of North 50 degrees 31 minutes 45 seconds East 615.71 feet, Northeasterly along an arc having a radius of 3,500.00 feet and a chord bearing of North 33 degrees 01 minutes 45 seconds East 848.89 feet, and Northeasterly along an arc having a radius of 2,500.00 feet and a chord bearing of North 20 degrees 22 minutes 49 seconds East 453.70 feet to its Northeast corner having Coordinates of X = 1,680,305.95 and Y = 521,233.35; thence North 12,036.65 feet to a point having Coordinates of X = 1,680,305.95 and Y = 533,270.00; thence East approximately 8,076 feet to a point on the boundary of State Lease No. 3172, as amended having a Coordinate of Y = 533,270.00; thence Southwesterly, Southeasterly, and Northeasterly on the boundary of said State Lease No. 3172 to the point of intersection with a North-South line having a Coordinate of X = 1,693,080.00; thence South approximately 18,062 feet to the point of beginning, **LESS AND EXCEPT**, if any, that portion of State Lease No. 13148 that may lie within the above described tract, containing approximately **58 acres**, all as more particularly outlined on a plat on file in the Office of Mineral Resources, Department of Natural Resources, as provided by the applicant. All bearings, distances and coordinates are based on Louisiana Coordinate System of 1927, (North or South Zone), where applicable.

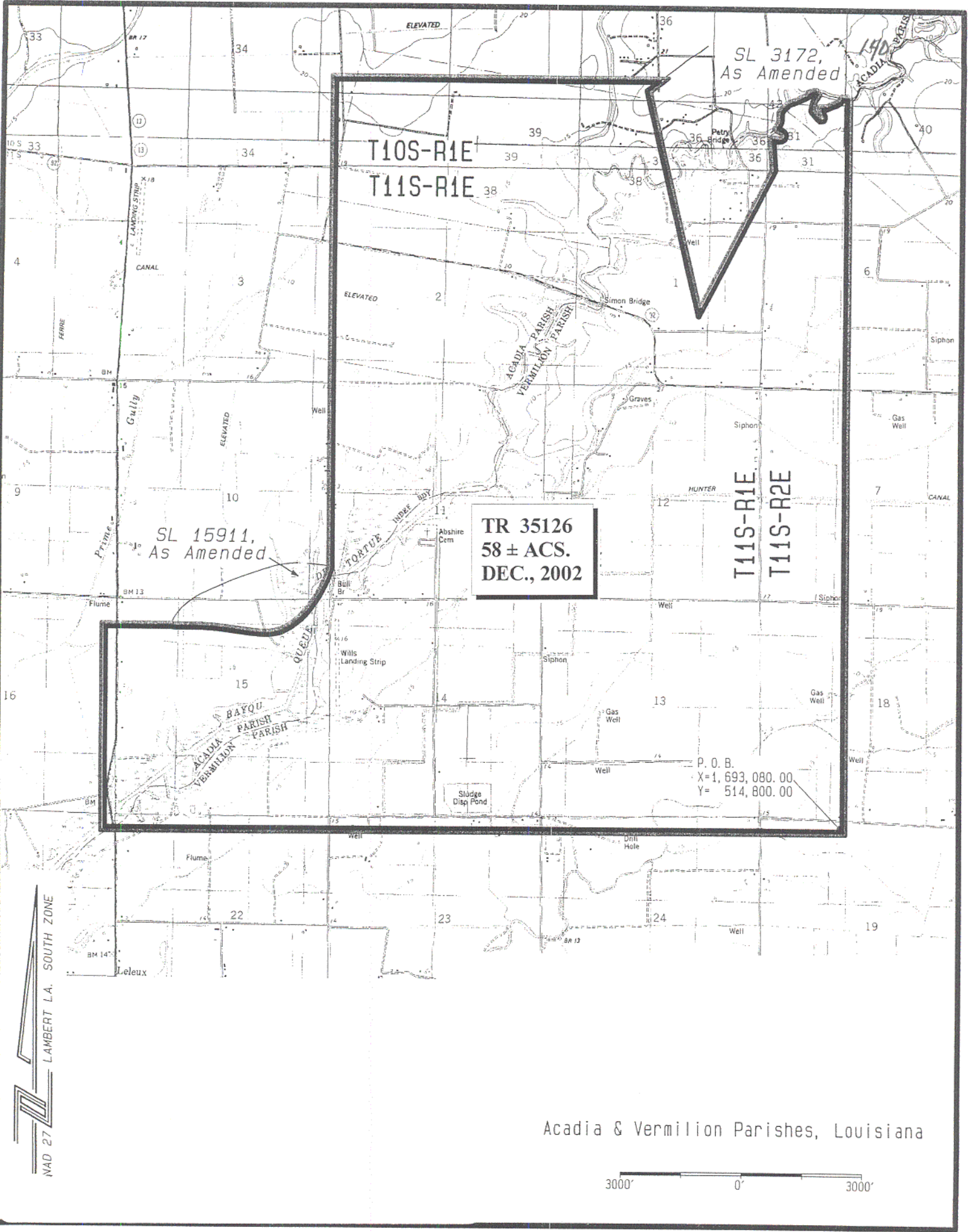
NOTE: The above description of the Tract nominated for lease has been provided and corrected, where required, exclusively by the nomination party. Any mineral lease selected from this Tract and awarded by the Louisiana State Mineral Board shall be without warranty of any kind,

either express, implied, or statutory, including, but not limited to, the implied warranties of merchantability and fitness for a particular purpose. Should the mineral lease awarded by the Louisiana State Mineral Board be subsequently modified, cancelled or abrogated due to the existence of conflicting leases, operating agreements, private claims or other future obligations or conditions which may affect all or any portion of the leased Tract, it shall not relieve the Lessee of the obligation to pay any bonus due thereon to the Louisiana State Mineral Board, not shall the Louisiana State Mineral Board be obligated to refund any consideration paid by the Lessor prior to such modification, cancellation, or abrogation, including, but not limited to, bonuses, rentals and royalties.

NOTE: The State of Louisiana does hereby reserve, and this lease shall be subject to, the imprescriptible right of surface use in the nature of a servitude in favor of the Department of Natural Resources, including its Offices and Commissions, for the sole purpose of implementing, constructing, servicing and maintaining approved coastal zone management and/or restoration projects. Utilization of any and all rights derived under this lease by the mineral lessee, its agents, successors or assigns, shall not interfere with nor hinder the reasonable surface use by the Department of Natural Resources, its Offices or Commissions, as herein above reserved.

Applicant: Saxon Energy, Inc.

Bidder	Cash Payment	Price / Acre	Rental	Oil	Gas	Other



T10S-R1E

T11S-R1E

SL 3172,
As Amended

SL 15911,
As Amended

TR 35126
58 ± ACS.
DEC., 2002

T11S-R1E

T11S-R2E

P. O. B.
X=1,693,080.00
Y=514,800.00

Acadia & Vermilion Parishes, Louisiana

3000' 0' 3000'

NAD 27 LAMBERT LA. SOUTH ZONE

TRACT 35127 - St. Martin Parish, Louisiana

All of the lands now or formerly constituting the beds and bottoms of all water bodies of every nature and description, and all islands and other lands formed by accretion, where allowed by law, or by reliction, and excepting tax adjudicated lands, belonging to the State of Louisiana and not presently under mineral lease on December 11, 2002, situated in St. Martin Parish, Louisiana, and more particularly described as follows: Beginning at a point having Coordinates of X = 1,921,500.00 and Y = 542,487.08; thence East 5,354.71 feet to the Northwest corner of State Lease No. 17066 having Coordinates of X = 1,926,854.71 and Y = 542,487.08; thence South approximately 7,797 feet along the West boundary of said State Lease No. 17066 to its Southwest corner located on the North boundary of a projection thereof of State Lease No. 4956 having a Coordinate of X = 1,926,854.71; thence on a straight line to the Northwest corner of said State Lease No. 4956; thence Southerly approximately 2,791 feet along the West boundary of said State Lease No. 4956 to a point having a Coordinate of Y = 531,900.00; thence West approximately 5,377 feet to a point having Coordinates of X = 1,921,500.00 and Y = 531,900.00; thence North 10,587.08 feet to the point of beginning, containing approximately **200 acres**, all as more particularly outlined on a plat on file in the Office of Mineral Resources, Department of Natural Resources, as provided by the applicant. All bearings, distances and coordinates are based on Louisiana Coordinate System of 1927, (North or South Zone), where applicable.

NOTE: The above description of the Tract nominated for lease has been provided and corrected, where required, exclusively by the nomination party. Any mineral lease selected from this Tract and awarded by the Louisiana State Mineral Board shall be without warranty of any kind, either express, implied, or statutory, including, but not limited to, the implied warranties of merchantability and fitness for a particular purpose. Should the mineral lease awarded by the Louisiana State Mineral Board be subsequently modified, cancelled or abrogated due to the existence of conflicting leases, operating agreements, private claims or other future obligations or conditions which may affect all or any portion of the leased Tract, it shall not relieve the Lessee of the obligation to pay any bonus due thereon to the Louisiana State Mineral Board, nor shall the Louisiana State Mineral Board be obligated to refund any consideration paid by the Lessor prior to such modification, cancellation, or abrogation, including, but not limited to, bonuses, rentals and royalties.

Applicant: Krescent Energy Partners I, LP

Bidder	Cash Payment	Price / Acre	Rental	Oil	Gas	Other

P.O.B.
X=1,921,500.00
Y= 542,487.08

TR 35127
200 ± ACS.
DEC., 2002

1832-33
Meander
Lines

Four Hundred Dollar
Lochen

T10S-R9E

T11S-R9E

Topography obtained from USC&GS Quadrangles
LAKE MONGOULOIS, LA., 1973 Edition &
"JACKASS BAY, LA", 1973 Edition.

St. Martin Parish, Louisiana

2000 0 2000
Scale in Feet