

TRACT 35197 - St. Mary Parish, Louisiana

A portion of all State owned lands, above the mean high water mark, located within the boundaries of the Atchafalaya Delta Wildlife Management Area, and lands now or formerly the beds and bottoms of any water body lying inland of the present day shoreline and within the boundaries of said W.M.A., not presently under mineral lease by the State of Louisiana on December 11, 2002, all as set forth following: Beginning at a point having Coordinates of X = 1,936,400.00 and Y = 299,160.00; thence North 10,840.00 feet to a point having Coordinates of X = 1,936,400.00 and Y = 310,000.00; thence East 5,600.00 feet to the Northwest corner of State Lease No. 17228 having Coordinates of X = 1,942,000.00 and Y = 310,000.00; thence South 4,000.00 feet along the West line of said State Lease No. 17228 to its Southwest corner, said corner also being the Northwest corner of State Lease No. 17227, having Coordinates of X = 1,942,000.00 and Y = 306,000.00; thence South 1,500.00 feet along the West line of said State Lease No. 17227 to its Southwest corner having Coordinates of X = 1,942,000.00 and Y = 304,500.00; thence East 8,999.00 feet along the South line of said State Lease No. 17227 to its Southeast corner, said corner also being a point on the West line of State Lease No. 16966, having Coordinates of X = 1,950,999.00 and Y = 304,500.00; thence South 2,942.00 feet along the West line of said State Lease No. 16966 to its Southwest corner having Coordinates of X = 1,950,999.00 and Y = 301,558.00; thence South 2,398.00 feet to a point having Coordinates of X = 1,950,999.00 and Y = 299,160.00; thence West 14,599.00 feet to the point of beginning, containing approximately **2,496.76 acres**, all as more particularly outlined on a plat on file in the Office of Mineral Resources, Department of Natural Resources, as provided by the applicant. All bearings, distances and coordinates are based on Louisiana Coordinate System of 1927, (South Zone).

NOTE: The above description of the Tract nominated for lease has been provided and corrected, where required, exclusively by the nomination party. Any mineral lease selected from this Tract and awarded by the Louisiana State Mineral Board shall be without warranty of any kind, either express, implied, or statutory, including, but not limited to, the implied warranties of merchantability and fitness for a particular purpose. Should the mineral lease awarded by the Louisiana State Mineral Board be subsequently modified, cancelled or abrogated due to the existence of conflicting leases, operating agreements, private claims or other future obligations or conditions which may affect all or any portion of the leased Tract, it shall not relieve the Lessee of the obligation to pay any bonus due thereon to the Louisiana State Mineral Board, nor shall the Louisiana State Mineral Board be obligated to refund any consideration paid by the Lessor prior to such modification, cancellation, or abrogation, including, but not limited to, bonuses, rentals and royalties.

NOTE: The Department of Wildlife and Fisheries has designated certain areas in the coastal waters of the State of Louisiana as Oyster Seed Bed Areas. The exact location of those Seed Bed Areas must be obtained from the Department of Wildlife and Fisheries and any work done under a mineral

lease from the State of Louisiana may necessarily be conducted in conformity with the rules and regulations promulgated by the said Department of Wildlife and Fisheries for Oyster Seed Bed Areas.

NOTE: The mineral lease is located in the Atchafalaya Delta Wildlife Management Area under the jurisdiction of the Louisiana Department of Wildlife and Fisheries which has promulgated rules and regulations for the protection of game and wildlife on the aforesaid Tract and, therefore, shall be subject to said rules and regulations, a copy of which shall be attached to the mineral lease. In addition to the specific rules and regulations applicable, the following shall apply regarding operations under this mineral lease:

1. No activities will be allowed without written authorization of the Department of Wildlife and Fisheries.
2. Proposed projects will be evaluated on a case by case basis. Modifications to project features including, but not limited to, access routes, spoil placement, well sites, flow lines and other appurtenant structures may be required by the Department of Wildlife and Fisheries.
3. Compliance with the Atchafalaya Delta Wildlife Management Area regulations will be required unless otherwise specified by the Department of Wildlife and Fisheries.
4. Compensatory mitigation will be required to offset avoidable wetland impacts.
5. Removal of all structures, facilities and equipment will be required within 120 days of abandonment unless otherwise agreed to in writing by the Department of Wildlife and Fisheries.
6. No activities will be allowed during the hunting season unless authorized by the Department of Wildlife and Fisheries.
7. Prior to submitting applications for wetland permits to Federal and State permitting agencies the lease holder shall coordinate project details with the Department of Wildlife and Fisheries. Contact person for the Department will be Mike Windham at (504) 568-5886.

NOTE: The Department of Wildlife and Fisheries will require a minimum bonus of \$350.00 per acre and a minimum royalty of 25%.

NOTE: The State of Louisiana does hereby reserve, and this lease shall be subject to, the imprescriptible right of surface use in the nature of a servitude in favor of the Department of Natural Resources, including its Offices and Commissions, for the sole purpose of implementing, constructing, servicing and maintaining approved coastal zone management and/or restoration projects. Utilization of any and all rights derived under this lease by the mineral lessee, its agents, successors or assigns, shall not interfere with nor hinder the reasonable surface use by the Department of Natural Resources, its Offices or Commissions, as herein above reserved.

Applicant: MW&N Petroleum Group

Bidder	Cash Payment	Price / Acre	Rental	Oil	Gas	Other

NAD 1927 (South Zone)

S. L. 16966

S. L. 17228

S. L. 17227

356

LOUISIANA

PARISH,

ST. MARY

SCALE : 1" = 2000'

TR 35197
2,497.76 ± ACS.
DEC., 2002

P.O.B.
X = 1,936,400.00
Y = 299,160.00

A

T

C

H

A

F

A

L

A

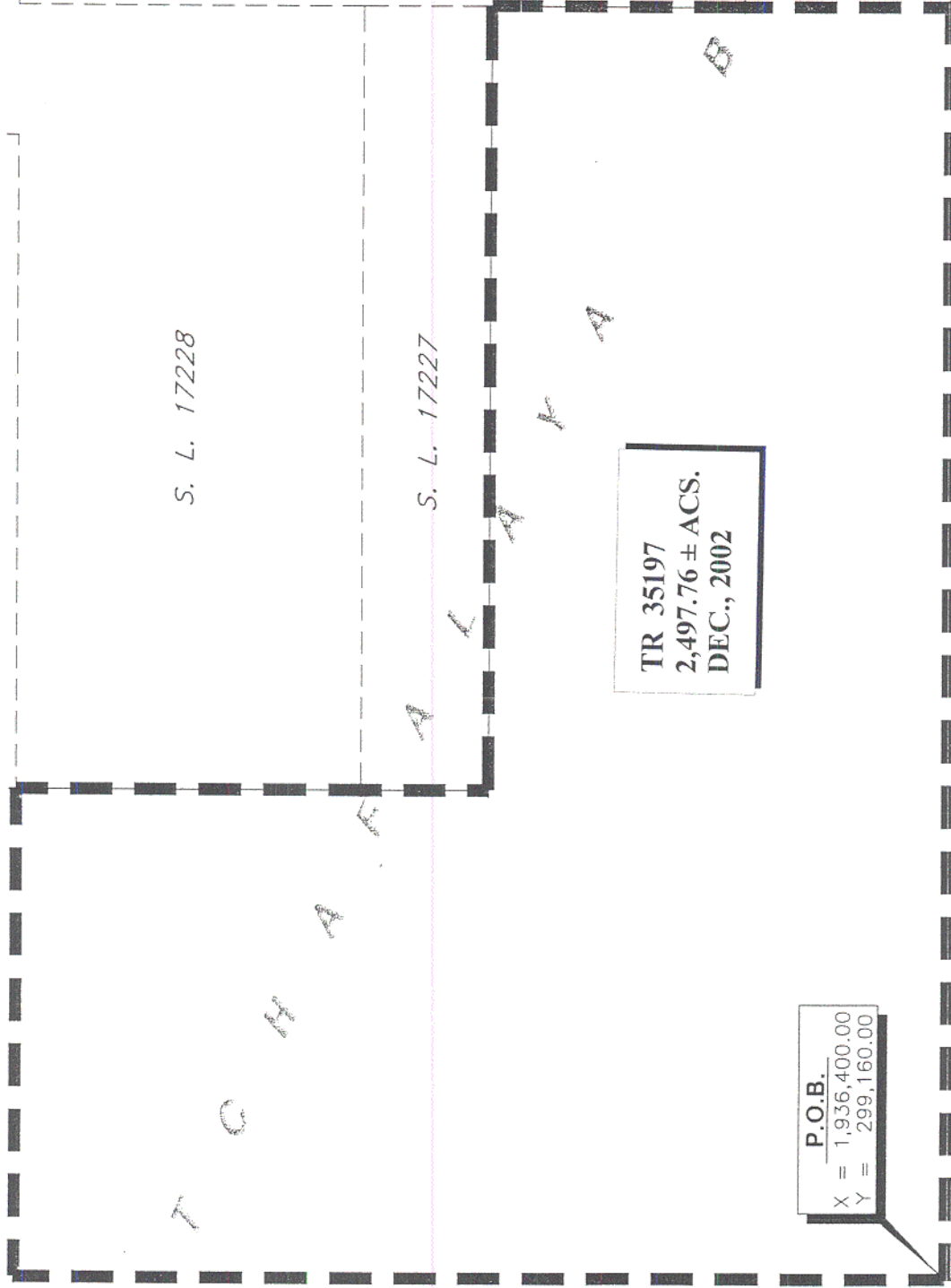
K

A

B

A

K



TRACT 35198 - St. Mary Parish, Louisiana

A portion of all State owned lands, above the mean high water mark, located within the boundaries of the Atchafalaya Delta Wildlife Management Area, and lands now or formerly the beds and bottoms of any water body lying inland of the present day shoreline and within the boundaries of said W.M.A., not presently under mineral lease by the State of Louisiana on December 11, 2002, all as set forth following: Beginning at a point having Coordinates of X = 1,936,400.00 and Y = 299,160.00; thence East 14,599.00 feet to a point having Coordinates of X = 1,950,999.00 and Y = 299,160.00; thence South 7,450.00 feet to a point having Coordinates of X = 1,950,999.00 and Y = 291,710.00; thence West 14,599.00 feet to a point having Coordinates of X = 1,936,400.00 and Y = 291,710.00; thence North 7,450.00 feet to the point of beginning, **LESS AND EXCEPT**, if any, that portion of State Lease No. 340, as amended, that may lie within the above described tract, containing approximately **2,496.84 acres**, all as more particularly outlined on a plat on file in the Office of Mineral Resources, Department of Natural Resources, as provided by the applicant. All bearings, distances and coordinates are based on Louisiana Coordinate System of 1927, (South Zone).

NOTE: The above description of the Tract nominated for lease has been provided and corrected, where required, exclusively by the nomination party. Any mineral lease selected from this Tract and awarded by the Louisiana State Mineral Board shall be without warranty of any kind, either express, implied, or statutory, including, but not limited to, the implied warranties of merchantability and fitness for a particular purpose. Should the mineral lease awarded by the Louisiana State Mineral Board be subsequently modified, cancelled or abrogated due to the existence of conflicting leases, operating agreements, private claims or other future obligations or conditions which may affect all or any portion of the leased Tract, it shall not relieve the Lessee of the obligation to pay any bonus due thereon to the Louisiana State Mineral Board, nor shall the Louisiana State Mineral Board be obligated to refund any consideration paid by the Lessor prior to such modification, cancellation, or abrogation, including, but not limited to, bonuses, rentals and royalties.

NOTE: The Department of Wildlife and Fisheries has designated certain areas in the coastal waters of the State of Louisiana as Oyster Seed Bed Areas. The exact location of those Seed Bed Areas must be obtained from the Department of Wildlife and Fisheries and any work done under a mineral lease from the State of Louisiana may necessarily be conducted in conformity with the rules and regulations promulgated by the said Department of Wildlife and Fisheries for Oyster Seed Bed Areas.

NOTE: The mineral lease is located in the Atchafalaya Delta Wildlife Management Area under the jurisdiction of the Louisiana Department of Wildlife and Fisheries which has promulgated rules and regulations for the protection of game and wildlife on the aforesaid Tract and, therefore, shall be subject to said rules and regulations, a copy of which shall be attached to the mineral lease. In addition to the specific rules and

regulations applicable, the following shall apply regarding operations under this mineral lease:

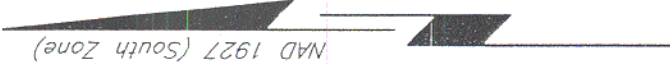
1. No activities will be allowed without written authorization of the Department of Wildlife and Fisheries.
2. Proposed projects will be evaluated on a case by case basis. Modifications to project features including, but not limited to, access routes, spoil placement, well sites, flow lines and other appurtenant structures may be required by the Department of Wildlife and Fisheries.
3. Compliance with the Atchafalaya Delta Wildlife Management Area regulations will be required unless otherwise specified by the Department of Wildlife and Fisheries.
4. Compensatory mitigation will be required to offset avoidable wetland impacts.
5. Removal of all structures, facilities and equipment will be required within 120 days of abandonment unless otherwise agreed to in writing by the Department of Wildlife and Fisheries.
6. No activities will be allowed during the hunting season unless authorized by the Department of Wildlife and Fisheries.
7. Prior to submitting applications for wetland permits to Federal and State permitting agencies the lease holder shall coordinate project details with the Department of Wildlife and Fisheries. Contact person for the Department will be Mike Windham at (504) 568-5886.

NOTE: The Department of Wildlife and Fisheries will require a minimum bonus of \$350.00 per acre and a minimum royalty of 25%.

NOTE: The State of Louisiana does hereby reserve, and this lease shall be subject to, the imprescriptible right of surface use in the nature of a servitude in favor of the Department of Natural Resources, including its Offices and Commissions, for the sole purpose of implementing, constructing, servicing and maintaining approved coastal zone management and/or restoration projects. Utilization of any and all rights derived under this lease by the mineral lessee, its agents, successors or assigns, shall not interfere with nor hinder the reasonable surface use by the Department of Natural Resources, its Offices or Commissions, as herein above reserved.

Applicant: MW&N Petroleum Group

Bidder	Cash Payment	Price / Acre	Rental	Oil	Gas	Other



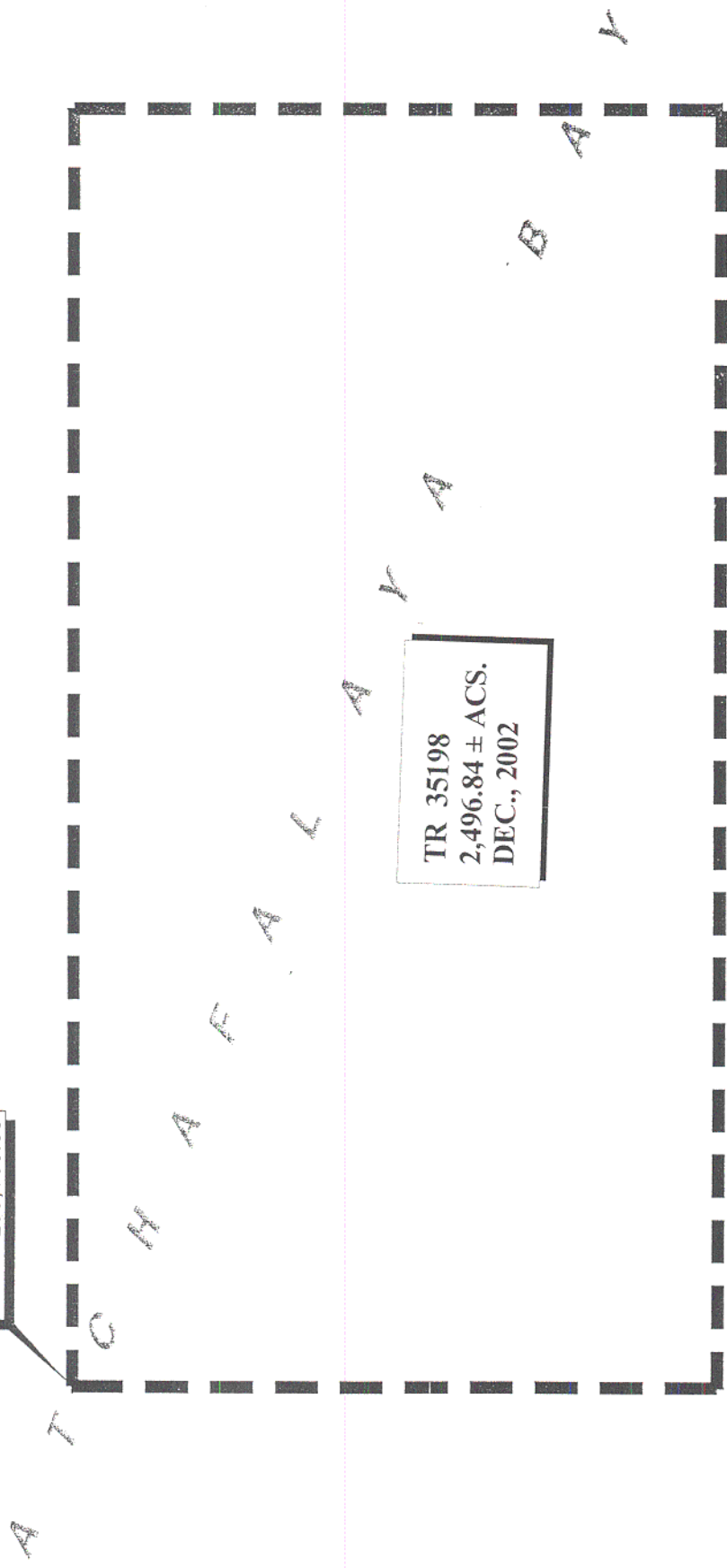
359

LOUISIANA

PARISH,

ST. MARY

SCALE : 1" = 2000'



TRACT 35199 - St. Mary Parish, Louisiana

A portion of all State owned lands, above the mean high water mark, located within the boundaries of the Atchafalaya Delta Wildlife Management Area, and lands now or formerly the beds and bottoms of any water body lying inland of the present day shoreline and within the boundaries of said W.M.A., not presently under mineral lease by the State of Louisiana on December 11, 2002, all as set forth following: Beginning at a point having Coordinates of X = 1,958,999.00 and Y = 291,710.00; thence West 8,000.00 feet to a point having Coordinates of X = 1,950,999.00 and Y = 291,710.00; thence North 9,848.00 feet to the Southwest of State Lease No. 16966 having Coordinates of X = 1,950,999.00 and Y = 301,558.00; thence East 8,000.00 feet along the South line of said State Lease No. 16966 to its Southeast corner having Coordinates of X = 1,958,999.00 and Y = 301,558.00; thence South 9,848.00 feet to the point of beginning, containing **1,808.63 acres**, all as more particularly outlined on a plat on file in the Office of Mineral Resources, Department of Natural Resources, as provided by the applicant. All bearings, distances and coordinates are based on Louisiana Coordinate System of 1927, (South Zone).

NOTE: The above description of the Tract nominated for lease has been provided and corrected, where required, exclusively by the nomination party. Any mineral lease selected from this Tract and awarded by the Louisiana State Mineral Board shall be without warranty of any kind, either express, implied, or statutory, including, but not limited to, the implied warranties of merchantability and fitness for a particular purpose. Should the mineral lease awarded by the Louisiana State Mineral Board be subsequently modified, cancelled or abrogated due to the existence of conflicting leases, operating agreements, private claims or other future obligations or conditions which may affect all or any portion of the leased Tract, it shall not relieve the Lessee of the obligation to pay any bonus due thereon to the Louisiana State Mineral Board, nor shall the Louisiana State Mineral Board be obligated to refund any consideration paid by the Lessor prior to such modification, cancellation, or abrogation, including, but not limited to, bonuses, rentals and royalties.

NOTE: The Department of Wildlife and Fisheries has designated certain areas in the coastal waters of the State of Louisiana as Oyster Seed Bed Areas. The exact location of those Seed Bed Areas must be obtained from the Department of Wildlife and Fisheries and any work done under a mineral lease from the State of Louisiana may necessarily be conducted in conformity with the rules and regulations promulgated by the said Department of Wildlife and Fisheries for Oyster Seed Bed Areas.

NOTE: The mineral lease is located in the Atchafalaya Delta Wildlife Management Area under the jurisdiction of the Louisiana Department of Wildlife and Fisheries which has promulgated rules and regulations for the protection of game and wildlife on the aforesaid Tract and, therefore, shall be subject to said rules and regulations, a copy of which shall be attached to the mineral lease. In addition to the specific rules and

regulations applicable, the following shall apply regarding operations under this mineral lease:

1. No activities will be allowed without written authorization of the Department of Wildlife and Fisheries.
2. Proposed projects will be evaluated on a case by case basis. Modifications to project features including, but not limited to, access routes, spoil placement, well sites, flow lines and other appurtenant structures may be required by the Department of Wildlife and Fisheries.
3. Compliance with the Atchafalaya Delta Wildlife Management Area regulations will be required unless otherwise specified by the Department of Wildlife and Fisheries.
4. Compensatory mitigation will be required to offset avoidable wetland impacts.
5. Removal of all structures, facilities and equipment will be required within 120 days of abandonment unless otherwise agreed to in writing by the Department of Wildlife and Fisheries.
6. No activities will be allowed during the hunting season unless authorized by the Department of Wildlife and Fisheries.
7. Prior to submitting applications for wetland permits to Federal and State permitting agencies the lease holder shall coordinate project details with the Department of Wildlife and Fisheries. Contact person for the Department will be Mike Windham at (504) 568-5886.

NOTE: The Department of Wildlife and Fisheries will require a minimum bonus of \$350.00 per acre and a minimum royalty of 25%.

NOTE: The State of Louisiana does hereby reserve, and this lease shall be subject to, the imprescriptible right of surface use in the nature of a servitude in favor of the Department of Natural Resources, including its Offices and Commissions, for the sole purpose of implementing, constructing, servicing and maintaining approved coastal zone management and/or restoration projects. Utilization of any and all rights derived under this lease by the mineral lessee, its agents, successors or assigns, shall not interfere with nor hinder the reasonable surface use by the Department of Natural Resources, its Offices or Commissions, as herein above reserved.

Applicant: MW&N Petroleum Group

Bidder	Cash Payment	Price / Acre	Rental	Oil	Gas	Other

362

S. L. 16966

A
T

C

H

A

F

A

T

A

T

A

TR 35199
1,808.63 ± ACS.
DEC., 2002

NAD 1927 (South Zone)

B

P.O.B.
X = 1,958,999.00
Y = 291,710.00

A

T

ST. MARY PARISH, LOUISIANA

SCALE : 1" = 2000'

TRACT 35200 - Portion of Block 16, Eugene Island Area, Revised, St. Mary Parish, Louisiana

A portion of all State owned lands, above the mean high water mark, located within the boundaries of the Atchafalaya Delta Wildlife Management Area, and lands now or formerly the beds and bottoms of any water body lying inland of the present day shoreline and within the boundaries of said W.M.A., not presently under mineral lease by the State of Louisiana on December 11, 2002, all as set forth following: Beginning at a point on the North line of Block 16, Eugene Island Area, Revised, having Coordinates of X = 1,979,400.00 and Y = 252,394.00; thence South 5,067.69 feet to a point on the Southern boundary of the Atchafalaya Delta Wildlife Management Area having Coordinates of X = 1,979,400.00 and Y = 246,786.31; thence North 70 degrees 45 minutes 06 seconds West 7,169.97 feet along the said Southern boundary of the Atchafalaya Delta Wildlife Management Area to a point on the South boundary of State Lease No. 17521 having Coordinates of X = 1,972,630.85 and Y = 249,150.00; thence along the South and East boundaries of said State Lease No. 17521 the following courses: East 2,019.15 feet and North 3,244.00 feet to a point on the North line of said Block 16 having Coordinates of X = 1,974,650.00 and Y = 252,394.00; thence East 4,750.00 feet along the North line of said Block 16 to the point of beginning, containing approximately **537.40 acres**, all as more particularly outlined on a plat on file in the Office of Mineral Resources, Department of Natural Resources, as provided by the applicant. All bearings, distances and coordinates are based on Louisiana Coordinate System of 1927, (South Zone).

NOTE: The above description of the Tract nominated for lease has been provided and corrected, where required, exclusively by the nomination party. Any mineral lease selected from this Tract and awarded by the Louisiana State Mineral Board shall be without warranty of any kind, either express, implied, or statutory, including, but not limited to, the implied warranties of merchantability and fitness for a particular purpose. Should the mineral lease awarded by the Louisiana State Mineral Board be subsequently modified, cancelled or abrogated due to the existence of conflicting leases, operating agreements, private claims or other future obligations or conditions which may affect all or any portion of the leased Tract, it shall not relieve the Lessee of the obligation to pay any bonus due thereon to the Louisiana State Mineral Board, nor shall the Louisiana State Mineral Board be obligated to refund any consideration paid by the Lessor prior to such modification, cancellation, or abrogation, including, but not limited to, bonuses, rentals and royalties.

NOTE: It appears, according to our records, that a portion of this Tract is located within the restrictive safety fairway area as set out by the Corps of Engineers, U.S. Army and/or the restrictive anchorage area as set out by the U.S. Coast Guard.

NOTE: The mineral lease is located in the Atchafalaya Delta Wildlife Management Area under the jurisdiction of the Louisiana Department of Wildlife and Fisheries which has promulgated rules and regulations for the

protection of game and wildlife on the aforesaid Tract and, therefore, shall be subject to said rules and regulations, a copy of which shall be attached to the mineral lease. In addition to the specific rules and regulations applicable, the following shall apply regarding operations under this mineral lease:

1. No activities will be allowed without written authorization of the Department of Wildlife and Fisheries.
2. Proposed projects will be evaluated on a case by case basis. Modifications to project features including, but not limited to, access routes, spoil placement, well sites, flow lines and other appurtenant structures may be required by the Department of Wildlife and Fisheries.
3. Compliance with the Atchafalaya Delta Wildlife Management Area regulations will be required unless otherwise specified by the Department of Wildlife and Fisheries.
4. Compensatory mitigation will be required to offset avoidable wetland impacts.
5. Removal of all structures, facilities and equipment will be required within 120 days of abandonment unless otherwise agreed to in writing by the Department of Wildlife and Fisheries.
6. No activities will be allowed during the hunting season unless authorized by the Department of Wildlife and Fisheries.
7. Prior to submitting applications for wetland permits to Federal and State permitting agencies the lease holder shall coordinate project details with the Department of Wildlife and Fisheries. Contact person for the Department will be Mike Windham at (504) 568-5886.

NOTE: The Department of Wildlife and Fisheries will require a minimum bonus of \$350.00 per acre and a minimum royalty of 25%.

NOTE: The Department of Wildlife and Fisheries has designated certain areas in the coastal waters of the State of Louisiana as Oyster Seed Bed Areas. The exact location of those Seed Bed Areas must be obtained from the Department of Wildlife and Fisheries and any work done under a mineral lease from the State of Louisiana may necessarily be conducted in conformity with the rules and regulations promulgated by the said Department of Wildlife and Fisheries for Oyster Seed Bed Areas.

NOTE: The State of Louisiana does hereby reserve, and this lease shall be subject to, the imprescriptible right of surface use in the nature of a servitude in favor of the Department of Natural Resources, including its Offices and Commissions, for the sole purpose of implementing, constructing, servicing and maintaining approved coastal zone management and/or restoration projects. Utilization of any and all rights derived under this lease by the mineral lessee, its agents, successors or assigns, shall not interfere with nor hinder the reasonable surface use by the Department of Natural Resources, its Offices or Commissions, as herein above reserved.

Applicant: Bagre Marinus & Co., Ltd.

Bidder	Cash Payment	Price / Acre	Rental	Oil	Gas	Other

ATCHAFALAYA DELTA
WILDLIFE MANAGEMENT AREA

P.O.B.
X = 1,979,400.00
Y = 252,394.00

SL 17520

SL 17251

TR 35200
537.40 ± ACS.
DEC., 2002

EUGENE ISLAND AREA, REVISED
BLOCK 16

ST. MARY PARISH

