

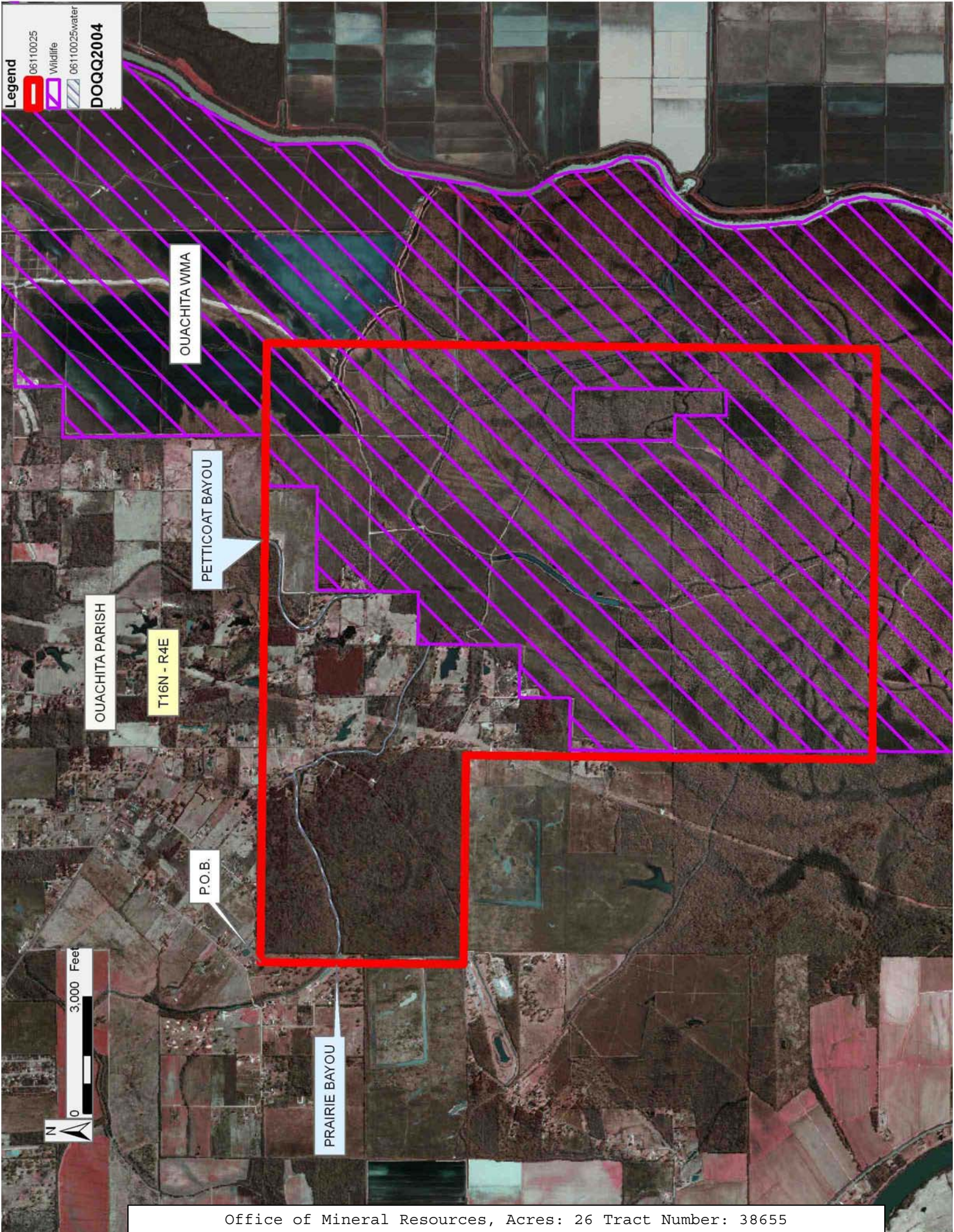
TRACT 38655 - Ouachita Parish, Louisiana

All of the lands now or formerly constituting the beds and bottoms of all water bodies of every nature and description the title of which vests in the State of Louisiana, together with all islands arising therein and other lands formed by accretion or by reliction, where allowed by law, excepting tax adjudicated lands, and not presently under mineral lease and cross hatched on November 8, 2006, situated in Ouachita Parish, Louisiana, and more particularly described as follows: Beginning at a point having Coordinates of X = 2,131,733.27 and Y = 623,568.66; thence East 15,939.86 feet to a point having Coordinates of X = 2,147,673.13 and Y = 623,568.66; thence South 15,686.44 feet to a point having Coordinates of X = 2,147,673.13 and Y = 607,882.22; thence West 10,566.13 feet to a point having Coordinates of X = 2,137,107.00 and Y = 607,882.22; thence North 10,457.63 feet to a point having Coordinates of X = 2,137,107.00 and Y = 618,339.85; thence West 5,373.73 feet to a point having Coordinates of X = 2,131,733.27 and Y = 618,339.85; thence North 5,228.81 feet to the Point of Beginning, **LESS AND EXCEPT** all portions of the above described lands and water bottoms lying inside the Ouachita State Wildlife Management Area, containing approximately **26.00 acres**, all as more particularly outlined on a plat on file in the Office of Mineral Resources, Department of Natural Resources. All bearings, distances and coordinates are based on Louisiana Coordinate System of 1927, (North or South Zone), where applicable.

NOTE: The above description of the Tract nominated for lease has been provided and corrected, where required, exclusively by the nomination party. Any mineral lease selected from this Tract and awarded by the Louisiana State Mineral Board shall be without warranty of any kind, either express, implied, or statutory, including, but not limited to, the implied warranties of merchantability and fitness for a particular purpose. Should the mineral lease awarded by the Louisiana State Mineral Board be subsequently modified, cancelled or abrogated due to the existence of conflicting leases, operating agreements, private claims or other future obligations or conditions which may affect all or any portion of the leased Tract, it shall not relieve the Lessee of the obligation to pay any bonus due thereon to the Louisiana State Mineral Board, nor shall the Louisiana State Mineral Board be obligated to refund any consideration paid by the Lessor prior to such modification, cancellation, or abrogation, including, but not limited to, bonuses, rentals and royalties.

Bidder	Cash Payment	Price/ Acre	Rental	Oil	Gas	Other

Applicant: DMB ENERGY



TRACT 38656 - Ouachita and Richland Parishes, Louisiana

All of the lands now or formerly constituting the beds and bottoms of all water bodies of every nature and description the title of which vests in the State of Louisiana, together with all islands arising therein and other lands formed by accretion or by reliction, where allowed by law, excepting tax adjudicated lands, and not presently under mineral lease and cross hatched on November 8, 2006, situated in Ouachita and Richland Parishes, Louisiana, and more particularly described as follows: Beginning at a point having Coordinates of X = 2,137,042.63 and Y = 623,569.73; thence East 14,000.00 feet to a point having Coordinates of X = 2,151,042.63 and Y = 623,569.73; thence South 11,500.00 feet to a point having Coordinates of X = 2,151,042.63 and Y = 612,069.73; thence West 14,000.00 feet to a point having Coordinates of X = 2,137,042.63 and Y = 612,069.73; thence North 11,500.00 feet to the Point of Beginning, **LESS AND EXCEPT** all portions of the above described lands and water bottoms lying outside the Ouachita State Wildlife Management Area, containing approximately **32 acres**, all as more particularly outlined on a plat on file in the Office of Mineral Resources, Department of Natural Resources. All bearings, distances and coordinates are based on Louisiana Coordinate System of 1927, (North or South Zone), where applicable.

NOTE: The above description of the Tract nominated for lease has been provided and corrected, where required, exclusively by the nomination party. Any mineral lease selected from this Tract and awarded by the Louisiana State Mineral Board shall be without warranty of any kind, either express, implied, or statutory, including, but not limited to, the implied warranties of merchantability and fitness for a particular purpose. Should the mineral lease awarded by the Louisiana State Mineral Board be subsequently modified, cancelled or abrogated due to the existence of conflicting leases, operating agreements, private claims or other future obligations or conditions which may affect all or any portion of the leased Tract, it shall not relieve the Lessee of the obligation to pay any bonus due thereon to the Louisiana State Mineral Board, nor shall the Louisiana State Mineral Board be obligated to refund any consideration paid by the Lessor prior to such modification, cancellation, or abrogation, including, but not limited to, bonuses, rentals and royalties.

NOTE: This tract is located within the boundaries of a wildlife management area or refuge and any operations conducted thereon in conjunction with this mineral lease may be subject to rules and regulations promulgated by the Department of Wildlife and Fisheries for the protection of fish, birds and other wildlife including, but not necessarily limited to, the following:

1. No activities will be allowed without written authorization from the Louisiana Department of Wildlife and Fisheries. All projects will be coordinated and approved by the appropriate WMA Supervisor prior to any activities on the wildlife management area.
2. Proposed projects will be evaluated on a case by case basis. Modifications to proposed projects may be required including, but not

limited to, access routes, spoil placement, well sites, flow lines and other appurtenant structures required by the Louisiana Department of Wildlife and Fisheries.

3. Compensatory mitigation will be required to offset unavoidable wetland impacts.

4. Removal of all structures, facilities, and equipment will be required within 120 days of abandonment unless otherwise agreed to by the Department of Wildlife and Fisheries.

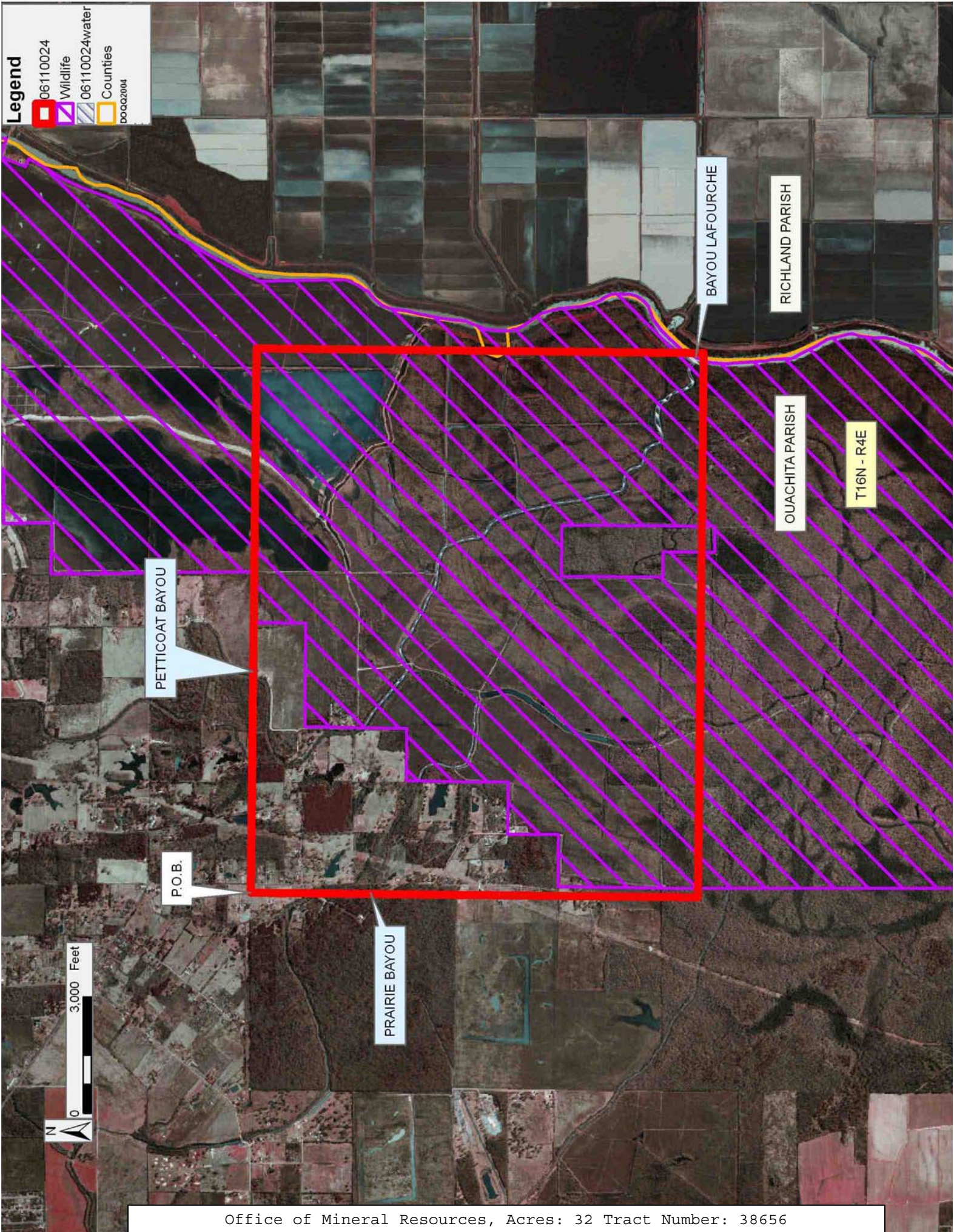
5. No activities will be allowed during the hunting season unless approved by the Department.

6. Compliance with the said WMA regulations will be required unless otherwise specified by the Department.

7. Prior to submitting applications for wetland permits to Federal and State permitting agencies the lease holder shall coordinate project details with the Louisiana Department of Wildlife and Fisheries, Fur and Refuge Division. Contact person for the Department will be Mike Windham at (504) 568-5886.

Applicant: DMB ENERGY

Bidder	Cash Payment	Price/ Acre	Rental	Oil	Gas	Other



TRACT 38657 - Ouachita and Richland Parishes, Louisiana

All of the lands now or formerly constituting the beds and bottoms of all water bodies of every nature and description the title of which vests in the State of Louisiana, together with all islands arising therein and other lands formed by accretion or by reliction, where allowed by law, excepting tax adjudicated lands, and not presently under mineral lease and cross hatched on November 8, 2006, situated in Ouachita and Richland Parishes, Louisiana, and more particularly described as follows: Beginning at a point having Coordinates of X = 2,147,673.13 and Y = 623,568.66; thence East 5,280.00 feet to a point having Coordinates of X = 2,152,953.13 and Y = 623,568.66; thence South 10,600.00 feet to a point having Coordinates of X = 2,152,953.13 and Y = 612,968.66; thence West 5,280.00 feet to a point having Coordinates of X = 2,147,673.13 and Y = 612,968.66; thence North 10,600.00 feet to the Point of Beginning, **LESS AND EXCEPT** all portions of the above described lands and water bottoms lying inside the Ouachita State Wildlife Management Area, containing approximately **66.0 acres**, all as more particularly outlined on a plat on file in the Office of Mineral Resources, Department of Natural Resources. All bearings, distances and coordinates are based on Louisiana Coordinate System of 1927, (North or South Zone), where applicable.

NOTE: The above description of the Tract nominated for lease has been provided and corrected, where required, exclusively by the nomination party. Any mineral lease selected from this Tract and awarded by the Louisiana State Mineral Board shall be without warranty of any kind, either express, implied, or statutory, including, but not limited to, the implied warranties of merchantability and fitness for a particular purpose. Should the mineral lease awarded by the Louisiana State Mineral Board be subsequently modified, cancelled or abrogated due to the existence of conflicting leases, operating agreements, private claims or other future obligations or conditions which may affect all or any portion of the leased Tract, it shall not relieve the Lessee of the obligation to pay any bonus due thereon to the Louisiana State Mineral Board, nor shall the Louisiana State Mineral Board be obligated to refund any consideration paid by the Lessor prior to such modification, cancellation, or abrogation, including, but not limited to, bonuses, rentals and royalties.

Bidder	Cash Payment	Price/ Acre	Rental	Oil	Gas	Other

Applicant: DMB ENERGY

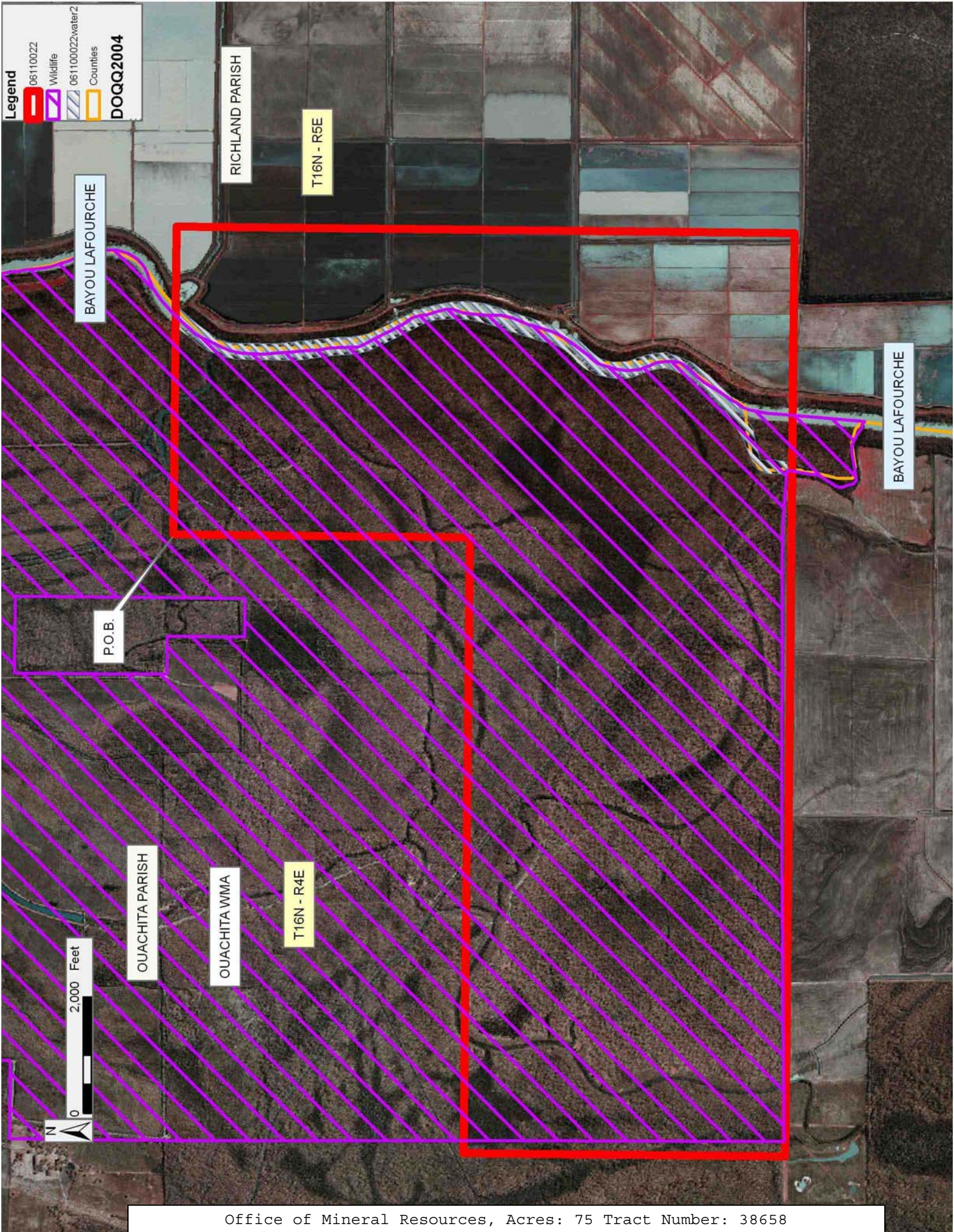
TRACT 38658 - Ouachita and Richland Parishes, Louisiana

All of the lands now or formerly constituting the beds and bottoms of all water bodies of every nature and description the title of which vests in the State of Louisiana, together with all islands arising therein and other lands formed by accretion or by reliction, where allowed by law, excepting tax adjudicated lands, and not presently under mineral lease and cross hatched on November 8, 2006, situated in Ouachita and Richland Parishes, Louisiana, and more particularly described as follows: Beginning at a point having Coordinates of X = 2,147,673.13 and Y = 612,968.66; thence East 5,280.00 feet to a point having Coordinates of X = 2,152,953.13 and Y = 612,968.66; thence South 10,600.00 feet to a point having Coordinates of X = 2,152,953.13 and Y = 602,368.66; thence West 15,846.13 feet to a point having Coordinates of X = 2,137,107.00 and Y = 602,368.66; thence North 5,513.56 feet to a point having Coordinates of X = 2,137,107.00 and Y = 607,882.22; thence East 10,566.13 feet to a point having Coordinates of X = 2,147,673.13 and Y = 607,882.22; thence North 5,086.44 feet to the Point of Beginning, **LESS AND EXCEPT** all portions of the above described lands and water bottoms lying inside the Ouachita State Wildlife Management Area, containing approximately **75 acres**, all as more particularly outlined on a plat on file in the Office of Mineral Resources, Department of Natural Resources. All bearings, distances and coordinates are based on Louisiana Coordinate System of 1927, (North or South Zone), where applicable.

NOTE: The above description of the Tract nominated for lease has been provided and corrected, where required, exclusively by the nomination party. Any mineral lease selected from this Tract and awarded by the Louisiana State Mineral Board shall be without warranty of any kind, either express, implied, or statutory, including, but not limited to, the implied warranties of merchantability and fitness for a particular purpose. Should the mineral lease awarded by the Louisiana State Mineral Board be subsequently modified, cancelled or abrogated due to the existence of conflicting leases, operating agreements, private claims or other future obligations or conditions which may affect all or any portion of the leased Tract, it shall not relieve the Lessee of the obligation to pay any bonus due thereon to the Louisiana State Mineral Board, nor shall the Louisiana State Mineral Board be obligated to refund any consideration paid by the Lessor prior to such modification, cancellation, or abrogation, including, but not limited to, bonuses, rentals and royalties.

Applicant: DMB ENERGY

Bidder	Cash Payment	Price/ Acre	Rental	Oil	Gas	Other



TRACT 38659 - Bienville Parish, Louisiana

All of the lands now or formerly constituting the beds and bottoms of all water bodies of every nature and description the title of which vests in the State of Louisiana, together with all islands arising therein and other lands formed by accretion or by reliction, where allowed by law, excepting tax adjudicated lands, and not presently under mineral lease and cross hatched on November 8, 2006, situated in Bienville Parish, Louisiana, and more particularly described as follows: Beginning at a point having Coordinates of X = 1,719,592.23 and Y = 608,952.46; thence East 5,600.00 feet to a point having Coordinates of X = 1,725,192.23 and Y = 608,952.46; thence South 5,665.00 feet to a point having Coordinates of X = 1,725,192.23 and Y = 603,287.46; thence West 5,600.00 feet to a point having Coordinates of X = 1,719,592.23 and Y = 603,287.46; thence North 5,665.00 feet to the point of beginning, **LESS AND EXCEPT** any state owned land located within the above described tract being described as the dried lake bed located within Lot 6 and Lot 15, or portions thereof, of Section 5, Township 15 North, Range 10 West, Bienville Parish, Louisiana, nominated tract containing approximately **339 acres**, all as more particularly outlined on a plat on file in the Office of Mineral Resources, Department of Natural Resources. All bearings, distances and coordinates are based on Louisiana Coordinate System of 1927, (North or South Zone), where applicable.

NOTE: The above description of the Tract nominated for lease has been provided and corrected, where required, exclusively by the nomination party. Any mineral lease selected from this Tract and awarded by the Louisiana State Mineral Board shall be without warranty of any kind, either express, implied, or statutory, including, but not limited to, the implied warranties of merchantability and fitness for a particular purpose. Should the mineral lease awarded by the Louisiana State Mineral Board be subsequently modified, cancelled or abrogated due to the existence of conflicting leases, operating agreements, private claims or other future obligations or conditions which may affect all or any portion of the leased Tract, it shall not relieve the Lessee of the obligation to pay any bonus due thereon to the Louisiana State Mineral Board, nor shall the Louisiana State Mineral Board be obligated to refund any consideration paid by the Lessor prior to such modification, cancellation, or abrogation, including, but not limited to, bonuses, rentals and royalties.

Applicant: HUNTER ENERGY CORPORATION

Bidder	Cash Payment	Price/ Acre	Rental	Oil	Gas	Other

Legend

- 06110012
- 06110012water
- SDE_BUS_83.ia_owned_land
- DOQQ2004**

BIENVILLE PARISH

T16N - R10W

T15N - R10W



P.O.B.

LAKE BISTINEAU



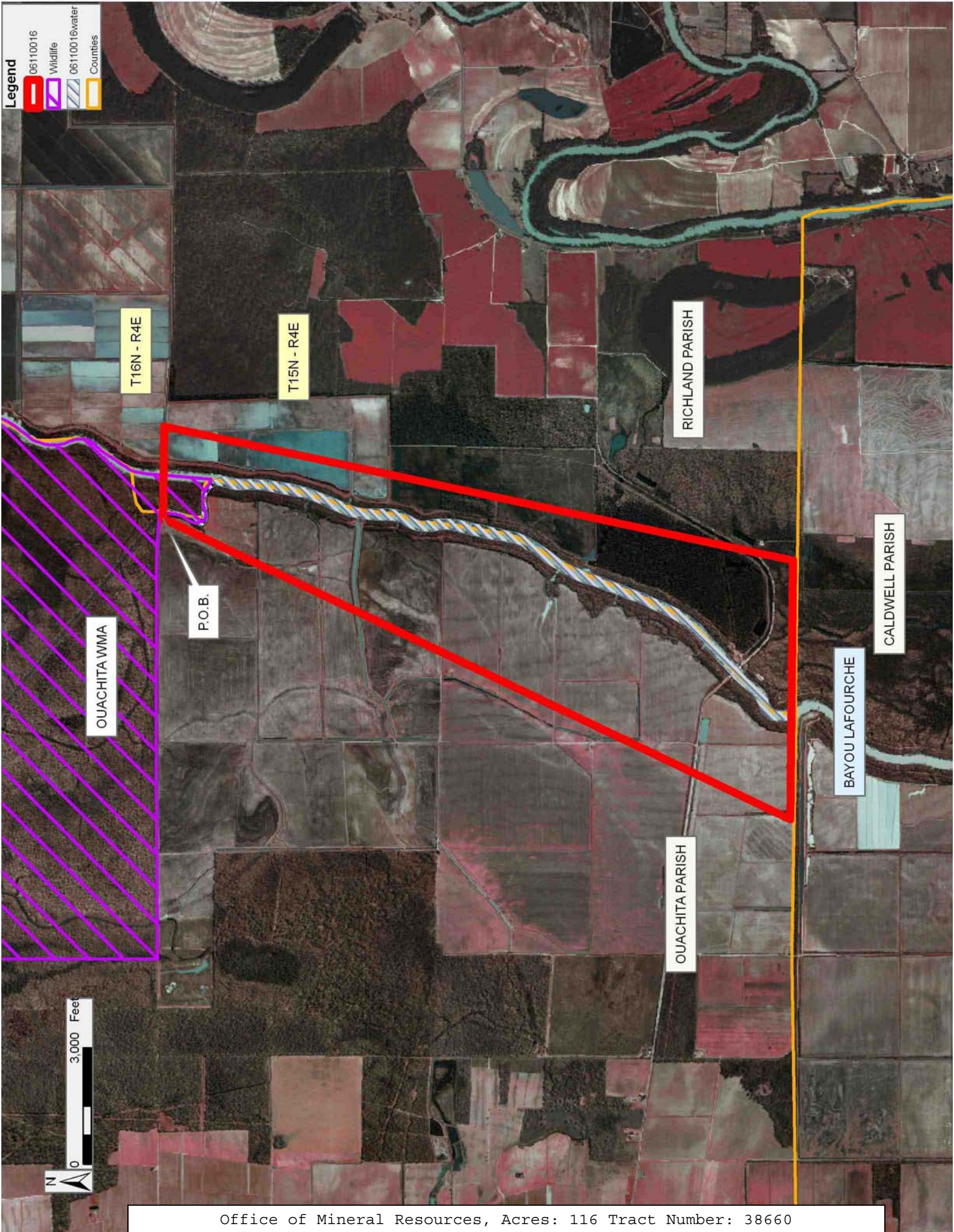
TRACT 38660 - Ouachita and Richland Parishes, Louisiana

All of the lands now or formerly constituting the beds and bottoms of all water bodies of every nature and description the title of which vests in the State of Louisiana, together with all islands arising therein and other lands formed by accretion or by reliction, where allowed by law, excepting tax adjudicated lands, and not presently under mineral lease and cross hatched on November 8, 2006, situated in Ouachita and Richland Parishes, Louisiana, and more particularly described as follows: Beginning at a point having Coordinates of X = 2,148,709.53 and Y = 602,368.66; thence East 2,369.42 feet to a point having Coordinates of X = 2,151,078.95 and Y = 602,368.66; thence South 11 degrees 26 minutes 55 seconds West 16,549.95 feet to a point having Coordinates of X = 2,147,794.00 and Y = 586,148.00; thence West 6,663.50 feet to a point having Coordinates of X = 2,141,130.50 and Y = 586,148.00; thence North 25 degrees 02 minutes 39 seconds East 17,903.95 feet to the Point of Beginning containing approximately **116.00 acres**, all as more particularly outlined on a plat on file in the Office of Mineral Resources, Department of Natural Resources. All bearings, distances and coordinates are based on Louisiana Coordinate System of 1927, (North or South Zone), where applicable.

NOTE: The above description of the Tract nominated for lease has been provided and corrected, where required, exclusively by the nomination party. Any mineral lease selected from this Tract and awarded by the Louisiana State Mineral Board shall be without warranty of any kind, either express, implied, or statutory, including, but not limited to, the implied warranties of merchantability and fitness for a particular purpose. Should the mineral lease awarded by the Louisiana State Mineral Board be subsequently modified, cancelled or abrogated due to the existence of conflicting leases, operating agreements, private claims or other future obligations or conditions which may affect all or any portion of the leased Tract, it shall not relieve the Lessee of the obligation to pay any bonus due thereon to the Louisiana State Mineral Board, nor shall the Louisiana State Mineral Board be obligated to refund any consideration paid by the Lessor prior to such modification, cancellation, or abrogation, including, but not limited to, bonuses, rentals and royalties.

Bidder	Cash Payment	Price/ Acre	Rental	Oil	Gas	Other

Applicant: DMB, INC.



TRACT 38661 - Sabine Parish, Louisiana

All of the lands now or formerly constituting the beds and bottoms of all water bodies of every nature and description the title of which vests in the State of Louisiana, together with all islands arising therein and other lands formed by accretion or by reliction, where allowed by law, excepting tax adjudicated lands, and not presently under mineral lease and cross hatched on November 8, 2006, situated in Sabine Parish, Louisiana, and more particularly described as follows: Beginning at a point having Coordinates of X = 1,598,900.00 feet and Y = 368,250.00 feet; thence South 11,500 feet to a point having Coordinates of X = 1,598,900.00 feet and Y = 356,750.00 feet; thence West 14,500.00 feet to a point having Coordinates of X = 1,584,400.00 and Y = 356,750.00 feet; thence North 11,500.00 feet to a point having Coordinates of X = 1,584,400.00 feet and Y = 368,250.00 feet; thence West 14,500.00 feet to the point of beginning, containing approximately **63 acres**, all as more particularly outlined on a plat on file in the Office of Mineral Resources, Department of Natural Resources. All bearings, distances and coordinates are based on Louisiana Coordinate System of 1927, (North or South Zone), where applicable.

NOTE: The above description of the Tract nominated for lease has been provided and corrected, where required, exclusively by the nomination party. Any mineral lease selected from this Tract and awarded by the Louisiana State Mineral Board shall be without warranty of any kind, either express, implied, or statutory, including, but not limited to, the implied warranties of merchantability and fitness for a particular purpose. Should the mineral lease awarded by the Louisiana State Mineral Board be subsequently modified, cancelled or abrogated due to the existence of conflicting leases, operating agreements, private claims or other future obligations or conditions which may affect all or any portion of the leased Tract, it shall not relieve the Lessee of the obligation to pay any bonus due thereon to the Louisiana State Mineral Board, nor shall the Louisiana State Mineral Board be obligated to refund any consideration paid by the Lessor prior to such modification, cancellation, or abrogation, including, but not limited to, bonuses, rentals and royalties.

Applicant: HARWOOD O. HOUSE

Bidder	Cash Payment	Price/ Acre	Rental	Oil	Gas	Other



TRACT 38662 - Sabine Parish, Louisiana

All of the lands now or formerly constituting the beds and bottoms of all water bodies of every nature and description the title of which vests in the State of Louisiana, together with all islands arising therein and other lands formed by accretion or by reliction, where allowed by law, excepting tax adjudicated lands, and not presently under mineral lease and cross hatched on November 8, 2006, situated in Sabine Parish, Louisiana, and more particularly described as follows: Beginning at a point having Coordinates of X = 1,598,900.00 feet and Y = 356,750.00 feet; thence South 11,500 feet to a point having Coordinates of X = 1,598,900.00 feet and Y = 345,250.00 feet; thence West 14,500.00 feet to a point having Coordinates of X = 1,584,400.00 and Y = 345,250.00' feet; thence North 11,500.00 feet to a point having Coordinates of X = 1,584,400.00 feet and Y = 356,750.00 feet; thence West 14,500.00 feet to the point of beginning, containing approximately **82 acres**, all as more particularly outlined on a plat on file in the Office of Mineral Resources, Department of Natural Resources. All bearings, distances and coordinates are based on Louisiana Coordinate System of 1927, (North or South Zone), where applicable.

NOTE: The above description of the Tract nominated for lease has been provided and corrected, where required, exclusively by the nomination party. Any mineral lease selected from this Tract and awarded by the Louisiana State Mineral Board shall be without warranty of any kind, either express, implied, or statutory, including, but not limited to, the implied warranties of merchantability and fitness for a particular purpose. Should the mineral lease awarded by the Louisiana State Mineral Board be subsequently modified, cancelled or abrogated due to the existence of conflicting leases, operating agreements, private claims or other future obligations or conditions which may affect all or any portion of the leased Tract, it shall not relieve the Lessee of the obligation to pay any bonus due thereon to the Louisiana State Mineral Board, nor shall the Louisiana State Mineral Board be obligated to refund any consideration paid by the Lessor prior to such modification, cancellation, or abrogation, including, but not limited to, bonuses, rentals and royalties.

Applicant: HARWOOD O. HOUSE

Bidder	Cash Payment	Price/ Acre	Rental	Oil	Gas	Other

Legend

- 06110003
- 06110003.water3
- Counties
- DOQQ2004**

P.O.B.

SABINE PARISH

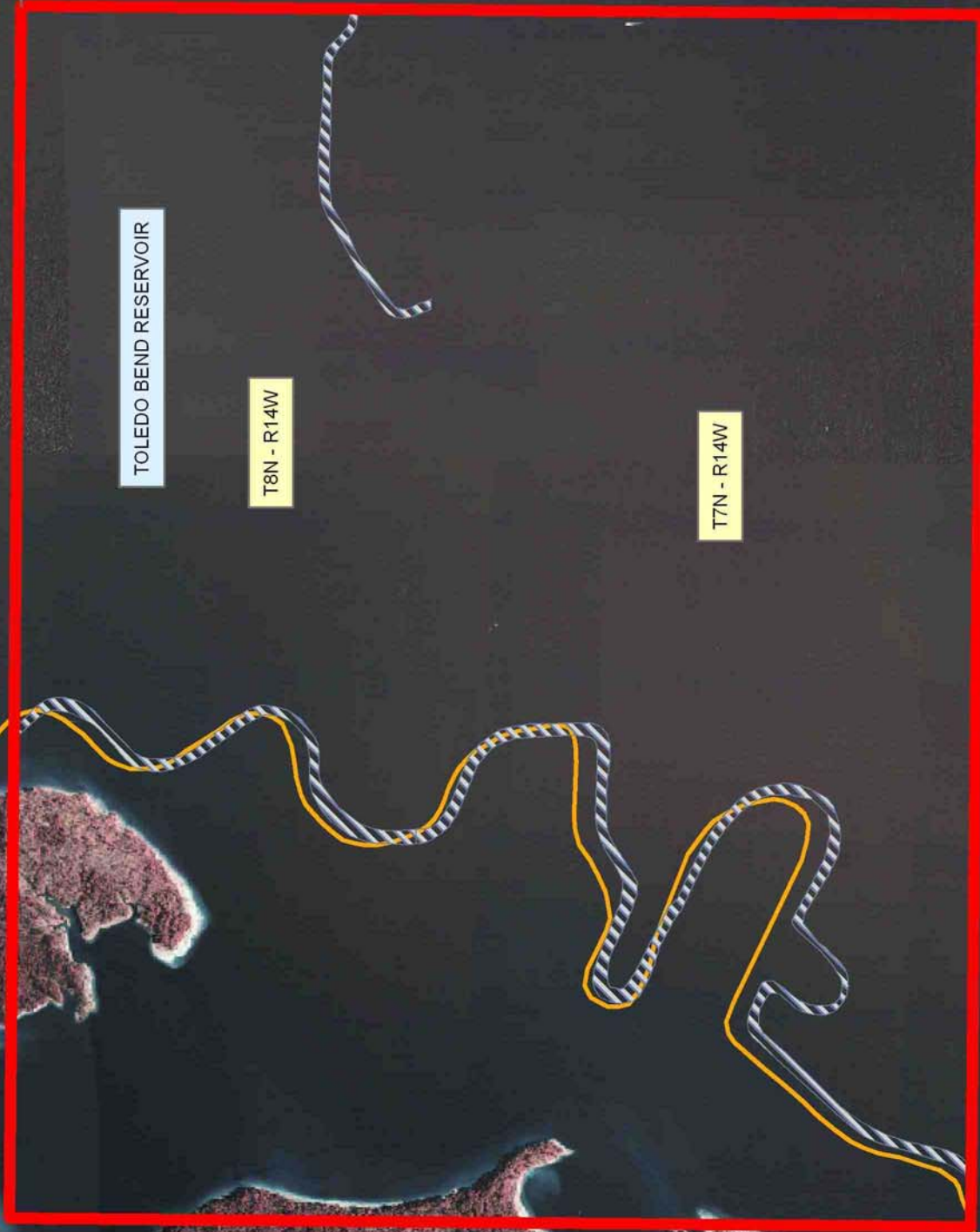
TOLEDO BEND RESERVOIR

T8N - R14W

T7N - R14W

0 2,000 Feet

N



TRACT 38663 - Beauregard Parish, Louisiana

All of the lands now or formerly constituting the beds and bottoms of all water bodies of every nature and description the title of which vests in the State of Louisiana, together with all islands arising therein and other lands formed by accretion or by reliction, where allowed by law, excepting tax adjudicated lands, and not presently under mineral lease and cross hatched on November 8, 2006, situated in Beauregard Parish, Louisiana, and more particularly described as follows: Beginning at a point having Coordinates of X = 1,418,350.00 and Y = 699,560.00; thence East 10,670.00 feet to a point having Coordinates of X = 1,429,020.00 and Y = 699,560.00; thence South 5,465.00 feet to a point having Coordinates of X = 1,429,020.00 and Y = 694,095.00; thence West 10,670.00 feet to a point having Coordinates of X = 1,418,350.00 and Y = 694,095.00; thence North 5,465.00 feet to the point of beginning, **LESS AND EXCEPT** any portion of State Lease No. 8702, as amended, that lies within the above described tract, containing approximately **24 acres**, all as more particularly outlined on a plat on file in the Office of Mineral Resources, Department of Natural Resources. All bearings, distances and coordinates are based on Louisiana Coordinate System of 1927, (North or South Zone), where applicable.

NOTE: The above description of the Tract nominated for lease has been provided and corrected, where required, exclusively by the nomination party. Any mineral lease selected from this Tract and awarded by the Louisiana State Mineral Board shall be without warranty of any kind, either express, implied, or statutory, including, but not limited to, the implied warranties of merchantability and fitness for a particular purpose. Should the mineral lease awarded by the Louisiana State Mineral Board be subsequently modified, cancelled or abrogated due to the existence of conflicting leases, operating agreements, private claims or other future obligations or conditions which may affect all or any portion of the leased Tract, it shall not relieve the Lessee of the obligation to pay any bonus due thereon to the Louisiana State Mineral Board, nor shall the Louisiana State Mineral Board be obligated to refund any consideration paid by the Lessor prior to such modification, cancellation, or abrogation, including, but not limited to, bonuses, rentals and royalties.

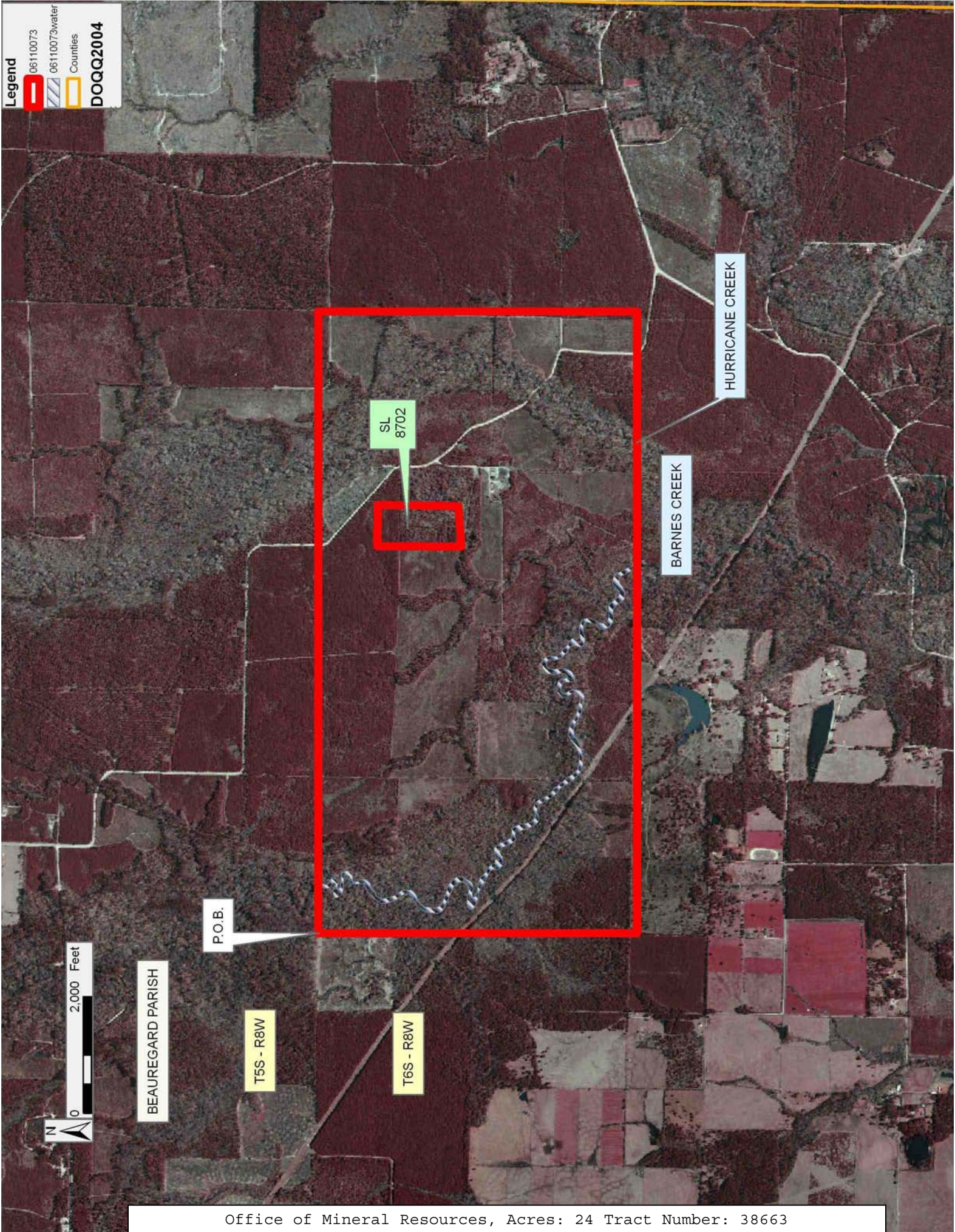
Bidder	Cash Payment	Price/ Acre	Rental	Oil	Gas	Other

Applicant: THEOPHILUS OIL, GAS & LAND SERVICES, LLC

Legend

-  06110073
-  06110073water
-  Counties

DOQQ2004



TRACT 38664 - Beauregard Parish, Louisiana

All of the lands now or formerly constituting the beds and bottoms of all water bodies of every nature and description the title of which vests in the State of Louisiana, together with all islands arising therein and other lands formed by accretion or by reliction, where allowed by law, excepting tax adjudicated lands, and not presently under mineral lease and cross hatched on November 8, 2006, situated in Beauregard Parish, Louisiana, and more particularly described as follows: Beginning at a point having Coordinates of X = 1,418,160.00 and Y = 688,760.00; thence East 5,400.00 feet to a point having Coordinates of X = 1,423,560.00 and Y = 688,760.00; thence North 5,335.00 feet to a point having Coordinates of X = 1,423,560.00 and Y = 694,095.00; thence East 5,460.00 feet to a point having Coordinates of X = 1,429,020.00 and Y = 694,095.00; thence South 5,335.00 feet to a point having Coordinates of X = 1,429,020.00 and Y = 688,760.00; thence East 5,130.00 feet to a point having Coordinates of X = 1,434,150.00 and Y = 688,760.00; thence South 5,420.00 feet to a point having Coordinates of X = 1,434,150.00 and Y = 683,340.00; thence West 15,990.00 feet to a point having Coordinates of X = 1,418,160.00 and Y = 683,340.00; thence North 5,420.00 feet to the point of beginning, containing approximately **46 acres**, all as more particularly outlined on a plat on file in the Office of Mineral Resources, Department of Natural Resources. All bearings, distances and coordinates are based on Louisiana Coordinate System of 1927, (North or South Zone), where applicable.

NOTE: The above description of the Tract nominated for lease has been provided and corrected, where required, exclusively by the nomination party. Any mineral lease selected from this Tract and awarded by the Louisiana State Mineral Board shall be without warranty of any kind, either express, implied, or statutory, including, but not limited to, the implied warranties of merchantability and fitness for a particular purpose. Should the mineral lease awarded by the Louisiana State Mineral Board be subsequently modified, cancelled or abrogated due to the existence of conflicting leases, operating agreements, private claims or other future obligations or conditions which may affect all or any portion of the leased Tract, it shall not relieve the Lessee of the obligation to pay any bonus due thereon to the Louisiana State Mineral Board, nor shall the Louisiana State Mineral Board be obligated to refund any consideration paid by the Lessor prior to such modification, cancellation, or abrogation, including, but not limited to, bonuses, rentals and royalties.

Applicant: THEOPHILUS OIL, GAS & LAND SERVICES, LLC

Bidder	Cash Payment	Price/ Acre	Rental	Oil	Gas	Other

Legend

- 06110074
- 06110074water
- Counties
- DOQQ2004**

