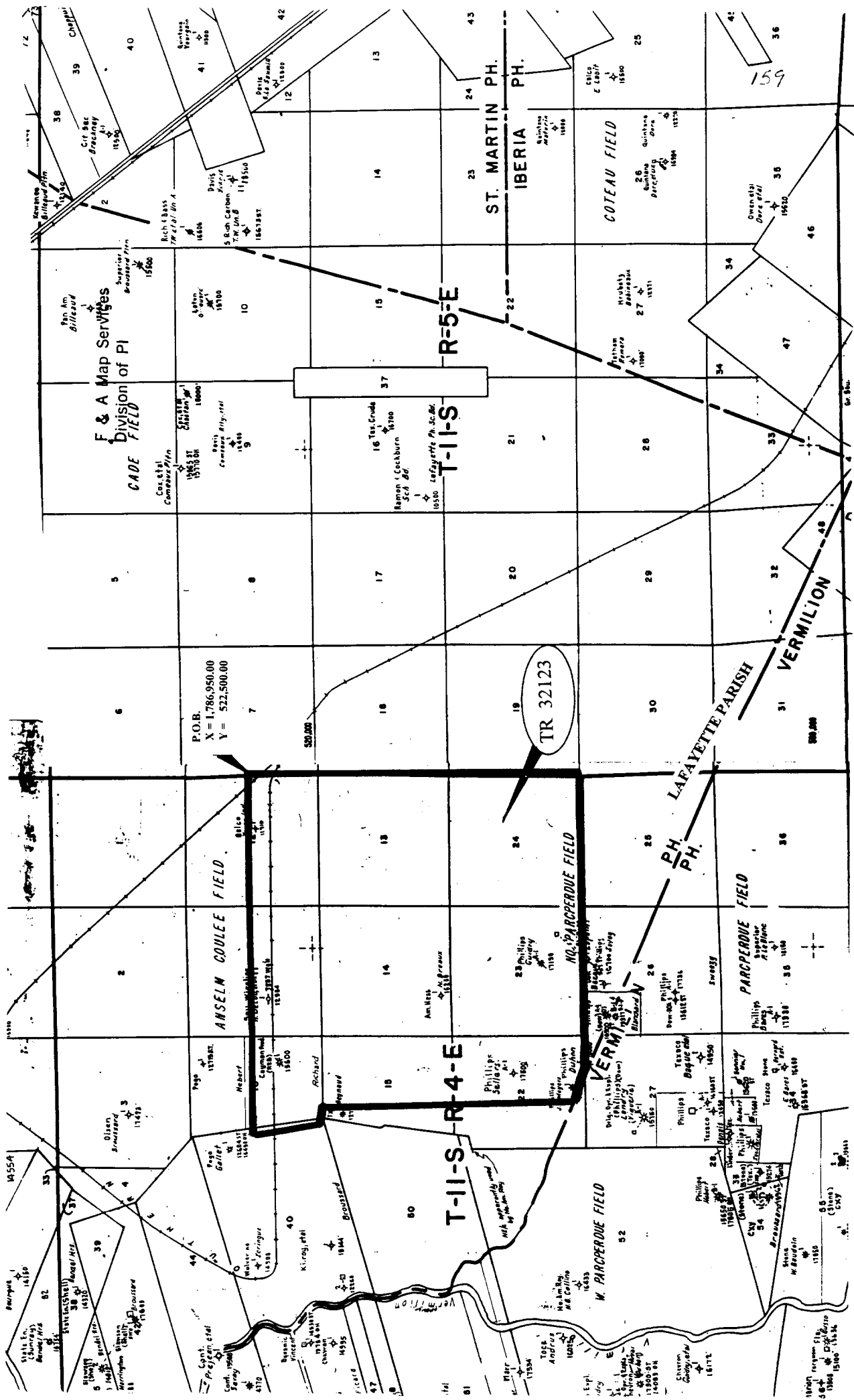


**STATE
AGENCY
TRACTS**

NOT TO BE USED WITH A PORTION BID
FOR INFORMATIONAL PURPOSES ONLY!

MAP NOT TO SCALE



TRACT 32123 - STATE AGENCY - Lafayette Parish, Louisiana

A certain tract of land belonging to and not under mineral lease from the Lafayette City-Parish Consolidated Government, on October 13, 1999, being more fully described as follows: Beginning at a point having Coordinates of X = 1,786,950.00 and Y = 522,500.00; thence South 13,200.00 feet to a point having Coordinates of X = 1,786,950.00 and Y = 509,300.00; thence West 12,150.00 feet to a point having Coordinates of X = 1,774,800.00 and Y = 509,300.00; thence North 65 degrees 33 minutes 22 seconds West 1,208.30 feet to a point having Coordinates of X = 1,773,700.00 and Y = 509,800.00; thence North 10,150.00 feet to a point having Coordinates of X = 1,773,700.00 and Y = 519,950.00; thence West 650.00 feet to a point having Coordinates of X = 1,773,050.00 and Y = 519,950.00; thence North 08 degrees 15 minutes 21 seconds West 2,576.70 feet to a point having Coordinates of X = 1,772,680.00 and Y = 522,500.00; thence East 14,270.00 feet to the point of beginning, excluding beds and bottoms of all navigable waters, containing approximately **51 acres**, as shown outlined in red on a plat on file in the Office of Mineral Resources, Department of Natural Resources. All bearings, distances and coordinates are based on Louisiana Coordinate System of 1927 (South Zone).

NOTE: Said lease must be subject to the provision that there shall be no drilling or surface operations on the lands vested in the Lafayette City-Parish Consolidated Government.

NOTE: Said lease must further provide that the lessee, or any assignee, shall be required to obtain consent from the Lafayette City-Parish Consolidated Government prior to the execution of any assignment.

NOTE: Said lease must further provide that the lessee shall at all times comply with all applicable environmental and wetlands laws and regulations promulgated by the federal government, the State of Louisiana, and/or department, office, or agency thereof, and that the lessee shall obtain all licenses and/or permits required under such laws and regulations prior to commencement of any operations affecting the leased property.

Applicant: Woodland Petroleum Corporation to Agency and by Resolution of the Lafayette City-Parish Consolidated Government authorizing the Mineral Board to act in its behalf.

Bidder	Cash Payment	Price / Acre	Rental	Oil	Gas	Other



P.O.B.
X = 1,786,950.00
Y = 522,500.00

TR 32123
51 +ACS.
OCT., 1999

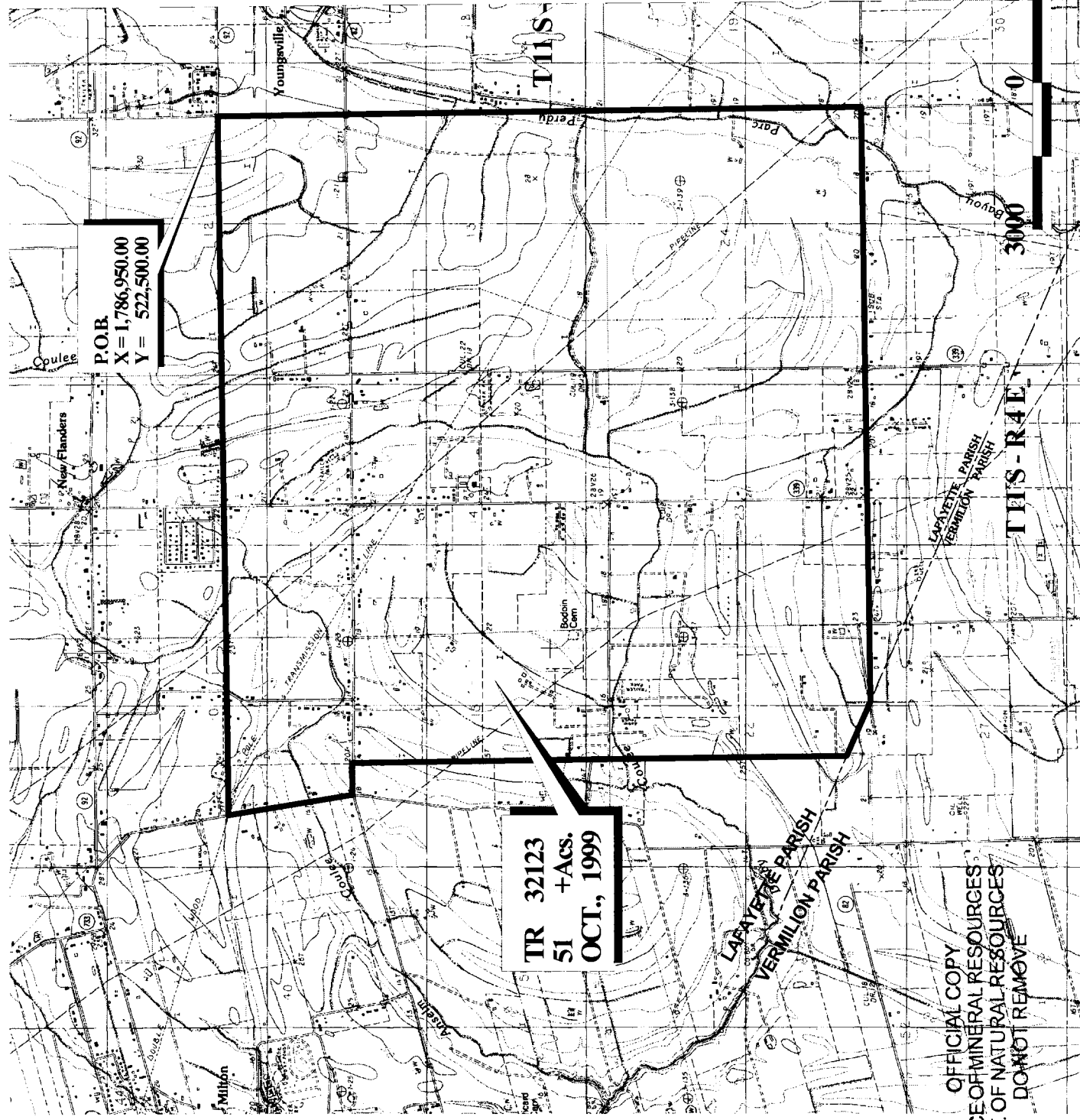
TIUS-R5E

3000 Feet

3000 Feet

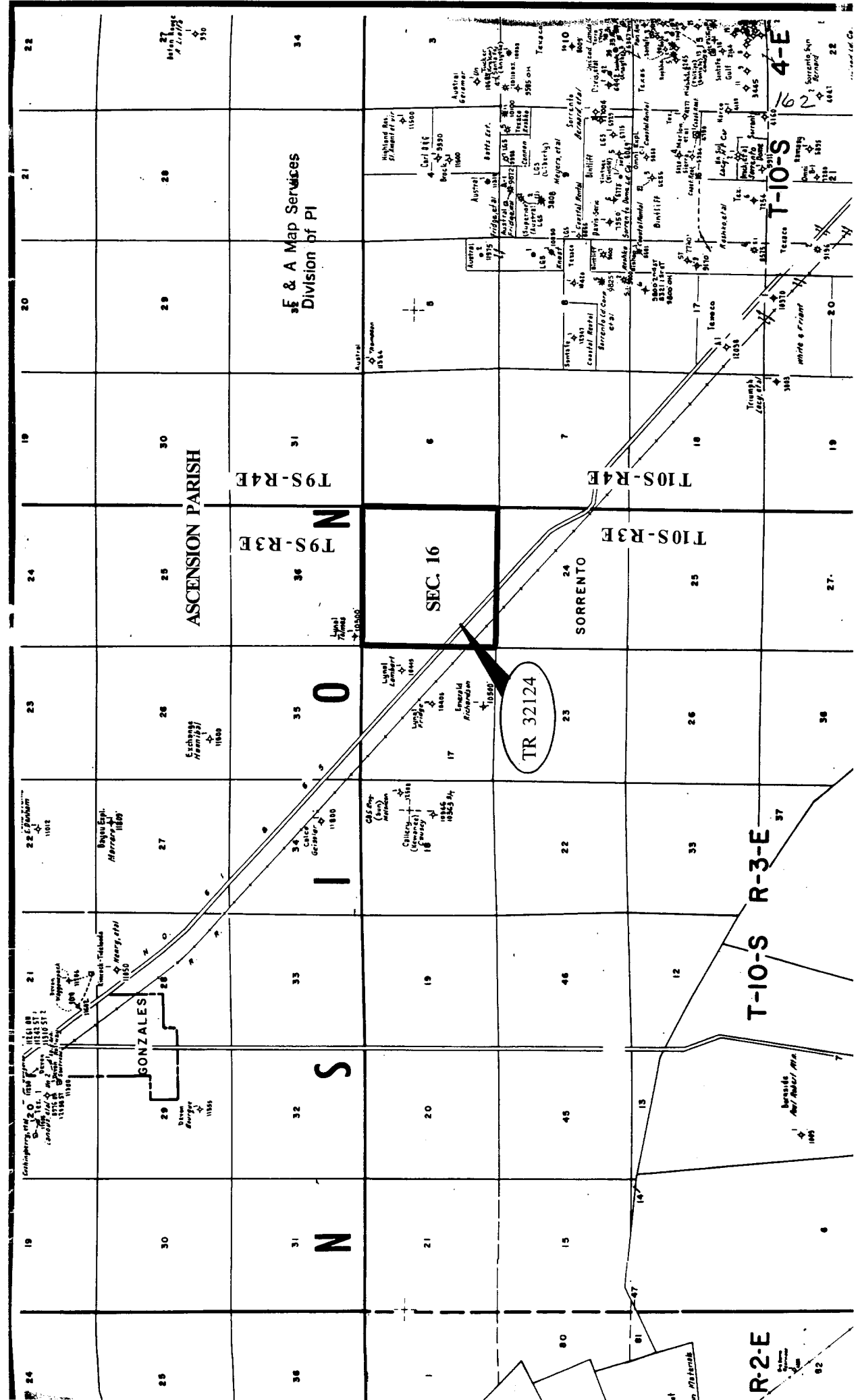
TIUS-R4E

OFFICIAL COPY
OFFICE OF MINERAL RESOURCES
DEPT. OF NATURAL RESOURCES
DO NOT REMOVE



MAP NOT TO SCALE

NOT TO BE USED WITH A PORTION BID
FOR INFORMATIONAL PURPOSES ONLY !!



R-2-E

T-10-S R-3-E

T10S-R3E

T10S-R4E

T9S-R3E

T9S-R4E

SEC. 16

ASCENSION PARISH

E & A Map Services
Division of PI

TR 32124

4-E

T-10-S

T-10-S

T-10-S

T-10-S

T-10-S

T-10-S

T-10-S

T-10-S

T-10-S

162

162

162

162

162

162

162

162

162

162

162

162

162

162

162

162

162

162

162

162

162

162

162

162

162

162

162

162

162

162

162

162

162

162

162

162

162

162

162

162

162

162

162

162

162

162

162

162

162

162

162

162

162

162

162

162

162

162

162

162

162

162

162

162

162

162

162

162

162

162

162

162

162

162

162

162

162

162

162

162

162

162

162

162

162

162

162

162

162

162

162

162

162

162

162

162

162

162

162

162

162

162

162

162

162

162

162

162

162

162

162

162

162

162

162

162

162

162

162

162

162

162

162

162

162

162

162

162

162

162

162

162

162

162

162

162

162

162

162

162

162

162

162

162

162

162

162

162

162

162

162

162

162

162

162

162

162

162

162

162

162

162

162

162

162

162

162

162

162

162

162

162

162

162

162

162

162

162

162

162

162

162

162

162

162

162

162

162

162

162

162

162

162

162

162

162

162

162

162

162

162

162

162

162

162

162

162

162

162

162

162

162

162

162

162

162

162

162

162

162

162

162

162

162

162

162

162

162

162

162

162

162

162

162

162

162

162

162

162

162

162

162

162

162

162

162

162

162

162

162

162

162

162

162

162

162

162

162

162

162

162

162

162

162

162

162

162

162

162

162

162

162

162

162

162

162

162

162

162

162

162

162

162

162

162

162

162

162

162

162

162

162

162

162

162

162

162

162

162

162

162

162

162

162

162

162

162

162

162

162

162

162

162

162

162

TRACT 32124 - STATE AGENCY - Ascension and St. James Parishes, Louisiana

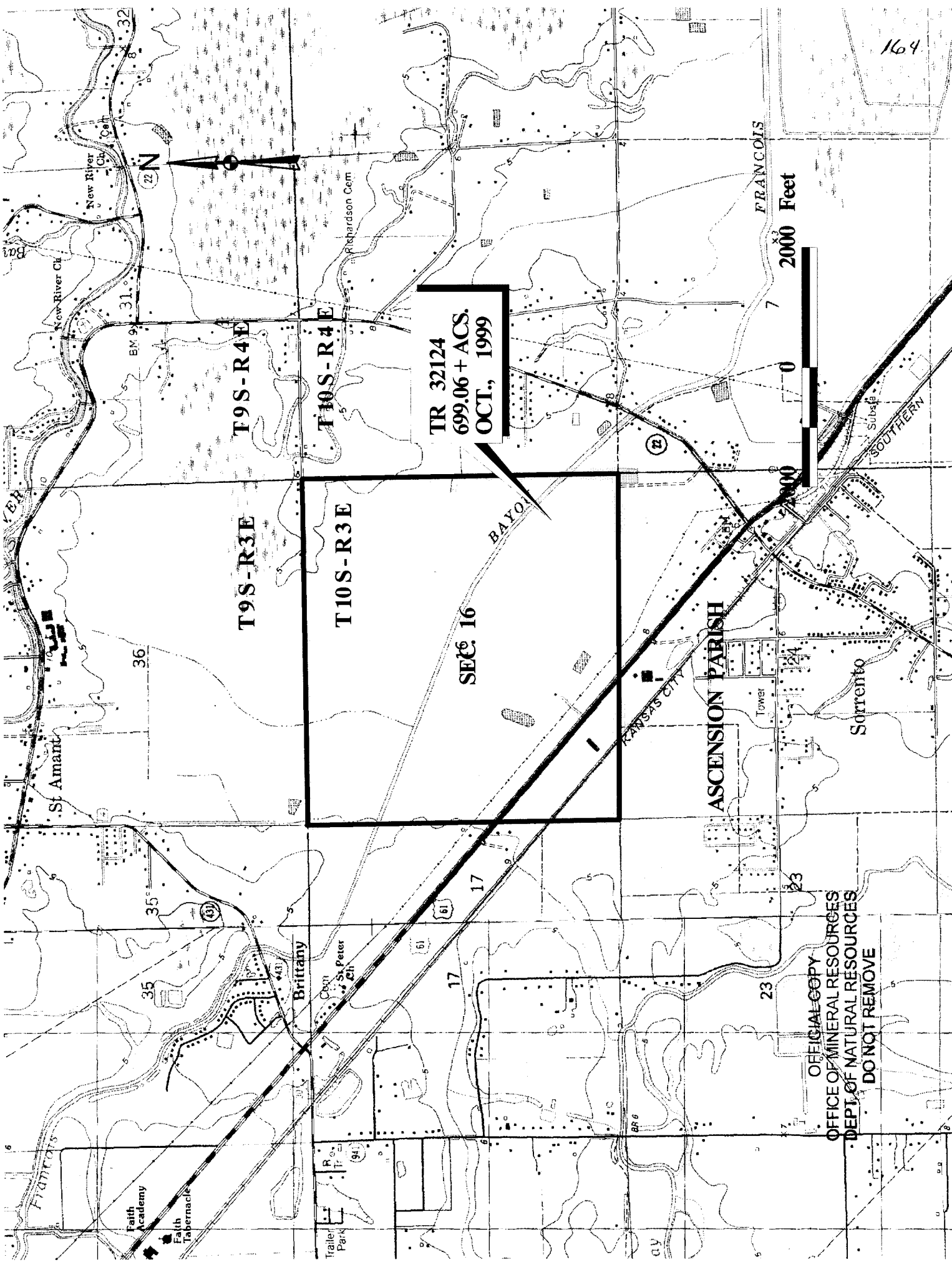
The State Mineral Board acting on behalf of the Ascension Parish School Board and the St. James Parish School Board, pursuant to Resolutions adopted by those bodies and in accordance with Louisiana Revised Statutes 30:121-136 and 151-156, as amended, and Article 12, Section 18 of the Louisiana Constitution of 1921, as amended, which by Section 16 (A) 9, and 16 (B) of Article XIV of the 1974 Constitution is continued as a statute subject to arrangement in proper statutory form or modification provided by law, advertises the following described lands not under mineral lease on: All of Section 16, Township 10 South, Range 3 East, Ascension Parish, Louisiana, said township situated in Ascension and St. James Parishes, Louisiana, excluding beds and bottoms of all navigable waters located in said section, containing approximately 699.06 acres, as shown outlined in red on a plat on file in the Office of Mineral Resources, Department of Natural Resources.

NOTE: "Lessors acknowledge that said Township 10 South, Range 3 East, is located 99.95% in the Parish of Ascension and .05% in the Parish of St. James; and Lessee is authorized and directed to pay any and all rentals and royalties which may accrue under the terms of this lease to Lessors separately and in the following proportions: Ascension Parish School Board - 99.95% and St. James Parish School Board - .05%" and "prospective bidders are hereby placed on notice that execution by the State Mineral Board of oil, gas and mineral lease on behalf of the Ascension Parish School Board and the St. James Parish School Board on the above described portion of section shall not be construed as a waiver by the State Mineral Board of any rights that it may have to lease for and on behalf of the State of Louisiana any navigable water bottoms that might be included within said portion of said section."

NOTE: There shall be no surface operations conducted on said leased property without prior written consent of the Ascension and St. James Parish School Boards.

Applicant: Land Resources, Inc. to Agency and by Resolution of the Ascension and St. James Parish School Boards authorizing the Mineral Board to act in its behalf.

Bidder	Cash Payment	Price / Acre	Rental	Oil	Gas	Other



TR 32124
699.06 + ACS.
OCT., 1999

2000 Feet



169

OFFICIAL COPY
OFFICE OF MINERAL RESOURCES
DEPT. OF NATURAL RESOURCES
DO NOT REMOVE

TR 32124
699.06 + ACS.
OCT., 1999

T9S-R4E

T10S-R4E

T9S-R3E

T10S-R3E

SEC. 16

BAYOU

ASCENSION PARISH

KANSAS CITY

Sorrento

FRANCOIS

Faith Academy
Faith Tabernacle

Trailer Park

Brittany

St. Peter

St. Amant

36

35

35

17

17

23

23

22

31

32

31

32

36

35

35

36

35

35

35

35

35

35

35

31

32

31

32

36

35

35

36

35

35

35

35

35

35

35

31

32

31

32

36

35

35

36

35

35

35

35

35

35

35

31

32

31

32

36

35

35

36

35

35

35

35

35

35

35

31

32

31

32

36

35

35

36

35

35

35

35

35

35

35

31

32

31

32

36

35

35

36

35

35

35

35

35

35

35

31

32

31

32

36

35

35

36

35

35

35

35

35

35

35

31

32

31

32

36

35

35

36

35

35

35

35

35

35

35

31

32

31

32

36

35

35

36

35

35

35

35

35

35

35

31

32

31

32

36

35

35

36

35

35

35

35

35

35

35

31

32

31

32

36

35

35

36

35

35

35

35

35

35

35

31

32

31

32

36

35

35

36

35

35

35

35

35

35

35

31

32

31

32

36

35

35

36

35

35

35

35

35

35

35

31

32

31

32

36

35

35

36

35

35

35

35

35

35

35

31

32

31

32

36

35

35

36

35

35

35

35

35

35

35

31

32

31

32

36

35

35

36

35

35

35

35

35

35

35

31

32

31

32

36

35

35

36

35

35

35

35

35

35

35

31

32

31

32

36

35

35

36

35

35

35

35

35

35

35

31

32

31

32

36

35

35

36

35

35

35

35

35

35

35

31

32

31

32

36

35

35

36

35

35

35

35

35

35

35

31

32

31

32

36

35

35