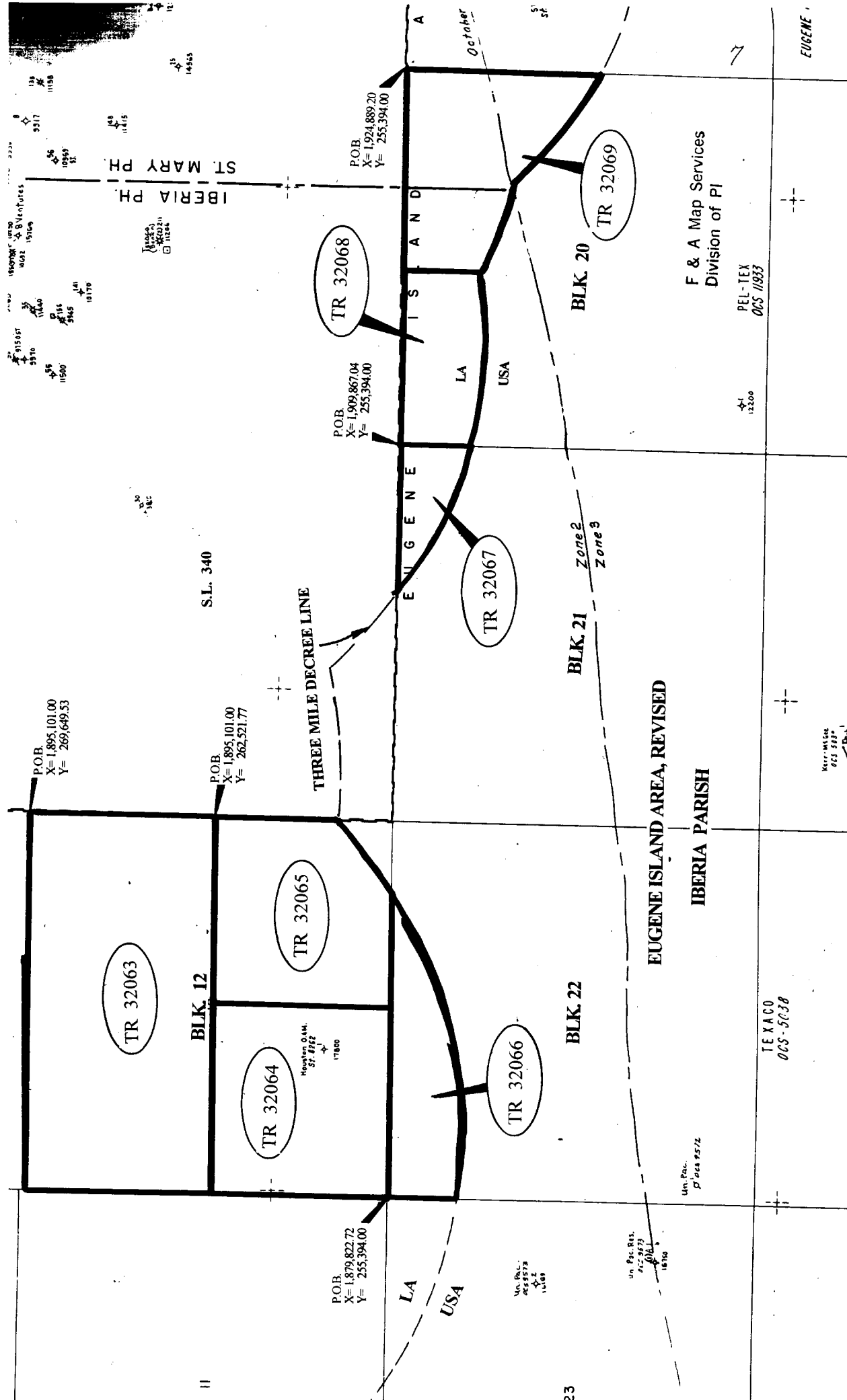


# OFFSHORE TRACTS

MAP NOT TO SCALE

NOT TO BE USED WITH A PORTION BID  
FOR INFORMATIONAL PURPOSES ONLY!



**TRACT 32063 - PORTION OF BLOCK 12, EUGENE ISLAND AREA, REVISED, Iberia Parish, Louisiana**

That portion of Block 12, Eugene Island Area, Revised, Iberia Parish, Louisiana, belonging to the State of Louisiana and not under mineral lease on October 13, 1999, described as follows: Beginning at the Northeast corner of Block 12, Eugene Island Area, Revised, having Coordinates of X = 1,895,101.00 and Y = 269,649.53; thence South 7,127.76 feet on the East line of said Block 12 to a point having Coordinates of X = 1,895,101.00 and Y = 262,521.77; thence West 15,278.28 feet to a point on the West line of said Block 12 having Coordinates of X = 1,879,822.72 and Y = 262,251.77; thence North 7,127.76 feet on the West line of said Block 12 to its Northwest corner having Coordinates of X = 1,879,822.72 and Y = 269,649.53; thence East 15,278.28 feet on the North line of said Block 12 to the point of beginning, containing approximately 2,500.00 acres, as shown outlined in red on a plat on file in the Office of Mineral Resources, Department of Natural Resources. All bearings, distances and coordinates are based on Louisiana Coordinate System of 1927 (South Zone).

NOTE: The above described tract is in the vicinity of existing shell reefs where drilling and dredging operations must be conducted in strict conformity with the regulations adopted by the Louisiana Department of Wildlife and Fisheries and/or the U.S. Corps of Engineers, U.S. Army.

NOTE: The State of Louisiana does hereby reserve, and this lease shall be subject to, the imprescriptible right of surface use in the nature of a servitude in favor of the Department of Natural Resources, including its Offices and Commissions, for the sole purpose of implementing, constructing, servicing and maintaining approved coastal zone management and/or restoration projects. Utilization of any and all rights derived under this lease by the mineral lessee, its agents, successors or assigns, shall not interfere with nor hinder the reasonable surface use by the Department of Natural Resources, its Offices or Commissions, as hereinabove reserved.

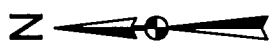
Applicant: J.T. Trimble

Bidder	Cash Payment	Price / Acre	Rental	Oil	Gas	Other

BLK. 5

TR 32063  
2500.00 + Acs.  
OCT., 1999

P.O.B.  
X= 1,895,101.00  
Y= 269,649.53



S.L. 340

BLK. 11

BLK. 12

EUGENE ISLAND AREA, REVISED

IBERIA PARISH

OFFICIAL COPY  
OFFICE OF MINERAL RESOURCES  
DEPT. OF NATURAL RESOURCES  
**DO NOT REMOVE**

Feet



**TRACT 32064 - PORTION OF BLOCK 12, EUGENE ISLAND AREA, REVISED, Iberia Parish, Louisiana**

That portion of Block 12, Eugene Island Area, Revised, Iberia Parish, Louisiana, belonging to the State of Louisiana and not under mineral lease on October 13, 1999, described as follows: Beginning at the Southwest corner of Block 12, Eugene Island Area, Revised, having Coordinates of X = 1,879,822.72 and Y = 255,394.00; thence North 7,127.77 feet along the West line of said Block 12 to a point having Coordinates of X = 1,879,822.72 and Y = 262,521.77; thence East 7,639.14 feet to a point having Coordinates of X = 1,887,461.86 and Y = 262,521.77; thence South 7,127.77 feet to a point on the South line of said Block 12 having Coordinates of X = 1,887,461.86 and Y = 255,394.00; thence West 7,639.14 feet along the said South line of said Block 12 to the point of beginning, containing approximately 1,250.00 acres, as shown outlined in red on a plat on file in the Office of Mineral Resources, Department of Natural Resources. All bearings, distances and coordinates are based on Louisiana Coordinate System of 1927 (South Zone).

NOTE: The above described tract is in the vicinity of existing shell reefs where drilling and dredging operations must be conducted in strict conformity with the regulations adopted by the Louisiana Department of Wildlife and Fisheries and/or the U.S. Corps of Engineers, U.S. Army.

NOTE: The State of Louisiana does hereby reserve, and this lease shall be subject to, the imprescriptible right of surface use in the nature of a servitude in favor of the Department of Natural Resources, including its Offices and Commissions, for the sole purpose of implementing, constructing, servicing and maintaining approved coastal zone management and/or restoration projects. Utilization of any and all rights derived under this lease by the mineral lessee, its agents, successors or assigns, shall not interfere with nor hinder the reasonable surface use by the Department of Natural Resources, its Offices or Commissions, as hereinabove reserved.

Applicant: J.T. Trimble

Bidder	Cash Payment	Price / Acre	Rental	Oil	Gas	Other



TR 32064  
1250.00 + ACS.  
OCT., 1999

BLK. 11

BLK. 12

OFFICIAL COPY  
OFFICE OF MINERAL RESOURCES  
DEPT. OF NATURAL RESOURCES  
DO NOT REMOVE

P.O.B.  
X= 1,879,822.72  
Y= 2,55,394.00

IBERIA PARISH  
EUGENE ISLAND AREA, REVISED

BLK. 22      2000      0      2000 Feet

BLK. 23

//

**TRACT 32065 - PORTION OF BLOCK 12, EUGENE ISLAND AREA, REVISED, Iberia Parish, Louisiana**

That portion of Block 12, Eugene Island Area, Revised, Iberia Parish, Louisiana, belonging to the State of Louisiana and not under mineral lease on October 13, 1999, described as follows: Beginning at a point on the East line of Block 12, Eugene Island Area, Revised, having Coordinates of X = 1,895,101.00 and Y = 262,521.77; thence South 4,933.53 feet along the said East line of said Block 12 to a point having Coordinates of X = 1,895,101.00 and Y = 257,588.24; thence Westerly along an arc having a radius of 18,240.60 feet and a center at X = 1,896,827 and Y = 275,747 to a point having Coordinates of X = 1,895,100 and Y = 257,588; thence Southwesterly on an arc having a radius of 18,240.60 feet and a center at X = 1,882,306 and Y = 270,590 to a point on the South line of said Block 12 having Coordinates of X = 1,892,395.65 and Y = 255,394.00; thence West 4,933.79 feet along the South line of said Block 12 to a point having Coordinates of X = 1,887,461.86 and Y = 255,394.00; thence North 7,127.77 feet to a point having Coordinates of X = 1,887,461.86 and Y = 262,521.77; thence East 7,639.14 feet to the point of beginning, containing approximately **1,186.29 acres**, as shown outlined in red on a plat on file in the Office of Mineral Resources, Department of Natural Resources, **LESS AND EXCEPT** that portion thereof, if any, which is more than three nautical miles from the coast line as determined by the Report of the Special Master in the litigation in the Supreme Court of the United States styled United States v. State of Louisiana et al No. 9 Original, said three mile line as set out in the June, 1975, decree of the Supreme Court. All bearings, distances and coordinates are based on Louisiana Coordinate System of 1927 (South Zone).

NOTE: The above described tract is in the vicinity of existing shell reefs where drilling and dredging operations must be conducted in strict conformity with the regulations adopted by the Louisiana Department of Wildlife and Fisheries and/or the U.S. Corps of Engineers, U.S. Army.

NOTE: The State of Louisiana does hereby reserve, and this lease shall be subject to, the imprescriptible right of surface use in the nature of a servitude in favor of the Department of Natural Resources, including its Offices and Commissions, for the sole purpose of implementing, constructing, servicing and maintaining approved coastal zone management and/or restoration projects. Utilization of any and all rights derived under this lease by the mineral lessee, its agents, successors or assigns, shall not interfere with nor hinder the reasonable surface use by the Department of Natural Resources, its Offices or Commissions, as hereinabove reserved.

Applicant: J.T. Trimble

Bidder	Cash Payment	Price / Acre	Rental	Oil	Gas	Other



EUGENE ISLAND AREA, REVISED

IBERIA PARISH

TR 32065  
1186.29 + ACS.  
OCT., 1999

POB  
X= 1,895,101.00  
Y= 262,521.77

BLK. 13

S.L. 340

BLK. 12

OFFICIAL COPY  
OFFICE OF MINERAL RESOURCES  
DEPT. OF NATURAL RESOURCES  
DO NOT REMOVE

LA  
USA

THREE MILE DECREE LINE

BLK. 22

BLK. 21  
2000 Feet

0 2000



**TRACT 32066 - PORTION OF BLOCK 22, EUGENE ISLAND AREA, REVISED, Iberia Parish, Louisiana**

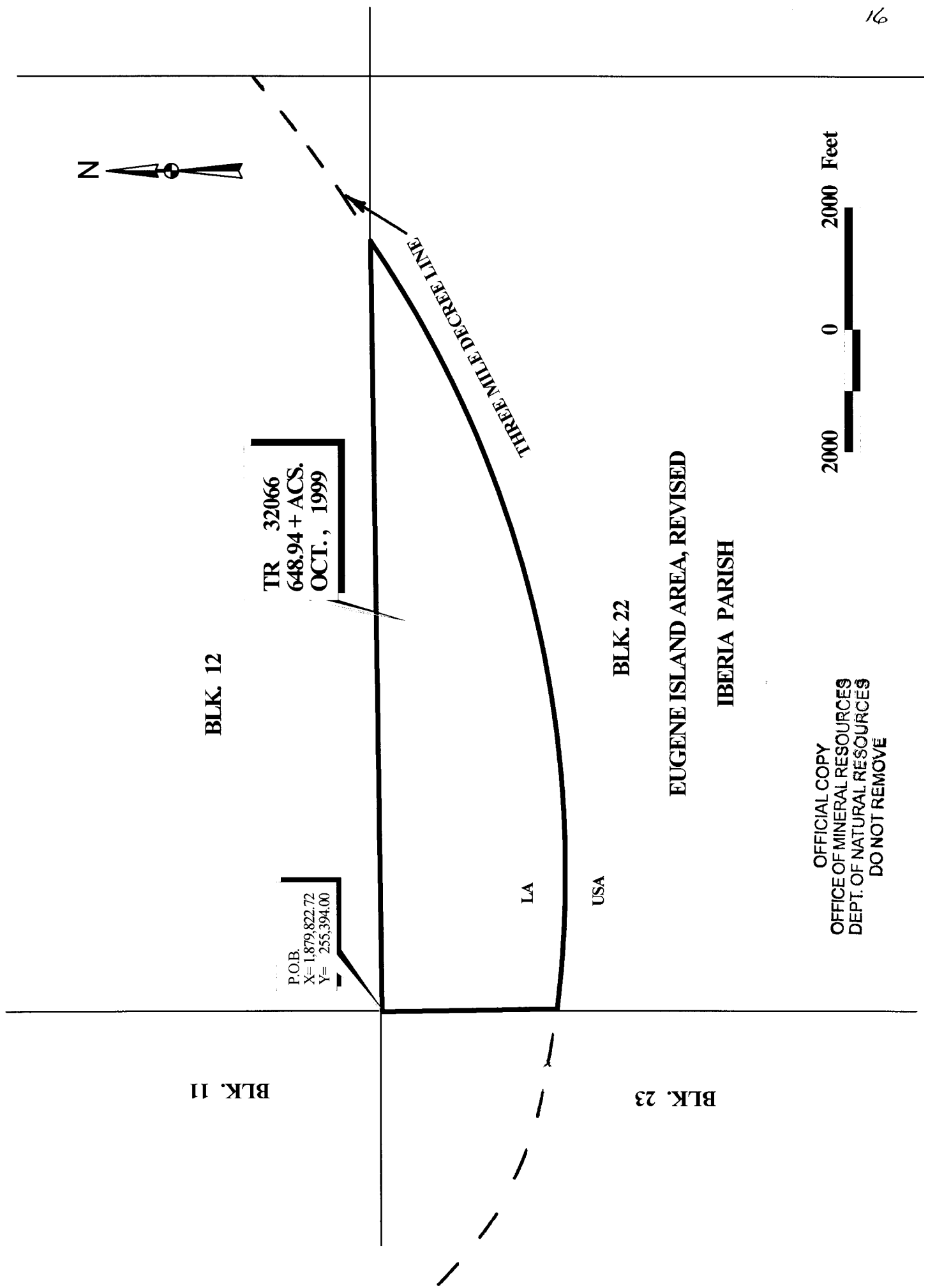
That portion of Block 22, Eugene Island Area, Revised, Iberia Parish, Louisiana, belonging to the State of Louisiana and not under mineral lease on October 13, 1999, described as follows: Beginning at the Northwest corner of Block 22, Eugene Island Area, Revised, having Coordinates of X = 1,879,822.72 and Y = 255,394.00; thence East 12,572.93 feet on the North line of said Block 22 to a point having Coordinates of X = 1,892,395.65 and Y = 255,394.00; thence Southwesterly on an arc having a radius of 18,240.60 feet and a center at X = 1,882,306 and Y = 270,590 to a point on the West line of said Block 22 having Coordinates of X = 1,879,822.72 and Y = 252,519.23; thence North 2,874.77 feet on said West line to the point of beginning, containing approximately **648.94 acres**, as shown outlined in red on a plat on file in the Office of Mineral Resources, Department of Natural Resources, **LESS AND EXCEPT** that portion thereof, if any, which is more than three nautical miles from the coast line as determined by the Report of the Special Master in the litigation in the Supreme Court of the United States styled United States v. State of Louisiana et al No. 9 Original, said three mile line as set out in the June, 1975, decree of the Supreme Court. All bearings, distances and coordinates are based on Louisiana Coordinate System of 1927 (South Zone).

NOTE: The above described tract is in the vicinity of existing shell reefs where drilling and dredging operations must be conducted in strict conformity with the regulations adopted by the Louisiana Department of Wildlife and Fisheries and/or the U.S. Corps of Engineers, U.S. Army.

NOTE: The State of Louisiana does hereby reserve, and this lease shall be subject to, the imprescriptible right of surface use in the nature of a servitude in favor of the Department of Natural Resources, including its Offices and Commissions, for the sole purpose of implementing, constructing, servicing and maintaining approved coastal zone management and/or restoration projects. Utilization of any and all rights derived under this lease by the mineral lessee, its agents, successors or assigns, shall not interfere with nor hinder the reasonable surface use by the Department of Natural Resources, its Offices or Commissions, as hereinabove reserved.

Applicant: J.T. Trimble

Bidder	Cash Payment	Price / Acre	Rental	Oil	Gas	Other



OFFICIAL COPY  
OFFICE OF MINERAL RESOURCES  
DEPT. OF NATURAL RESOURCES  
DO NOT REMOVE

**TRACT 32067 - PORTION OF BLOCK 21, EUGENE ISLAND AREA, REVISED, Iberia Parish, Louisiana**

That portion of Block 21, Eugene Island Area, Revised, Iberia Parish, Louisiana, belonging to the State of Louisiana and not under mineral lease on October 13, 1999, described as follows: Beginning at the Northeast corner of Block 21, Eugene Island Area, Revised, having Coordinates of X = 1,909,867.04 and Y = 255,394.00; thence South 2,689.29 feet on the East line of said Block 21 to a point having Coordinates of X = 1,909,867.04 and Y = 252,704.71; thence Northwesterly on an arc having a radius of 18,240.60 feet and a center at X = 1,914,373 and Y = 270,380 to a point on the North line of said Block 21 having Coordinates of X = 1,903,974.00 and Y = 255,394.00; thence East 5,893.04 feet on the North line of said Block 21 to the point of beginning, containing approximately **210.69 acres**, as shown outlined in red on a plat on file in the Office of Mineral Resources, Department of Natural Resources, **LESS AND EXCEPT** that portion thereof, if any, which is more than three nautical miles from the coast line as determined by the Report of the Special Master in the litigation in the Supreme Court of the United States styled United States v. State of Louisiana et al No. 9 Original, said three mile line as set out in the June, 1975, decree of the Supreme Court. All bearings, distances and coordinates are based on Louisiana Coordinate System of 1927 (South Zone).

NOTE: The above described tract is in the vicinity of existing shell reefs where drilling and dredging operations must be conducted in strict conformity with the regulations adopted by the Louisiana Department of Wildlife and Fisheries and/or the U.S. Corps of Engineers, U.S. Army.

NOTE: The State of Louisiana does hereby reserve, and this lease shall be subject to, the imprescriptible right of surface use in the nature of a servitude in favor of the Department of Natural Resources, including its Offices and Commissions, for the sole purpose of implementing, constructing, servicing and maintaining approved coastal zone management and/or restoration projects. Utilization of any and all rights derived under this lease by the mineral lessee, its agents, successors or assigns, shall not interfere with nor hinder the reasonable surface use by the Department of Natural Resources, its Offices or Commissions, as hereinabove reserved.

Applicant: J.T. Trimble

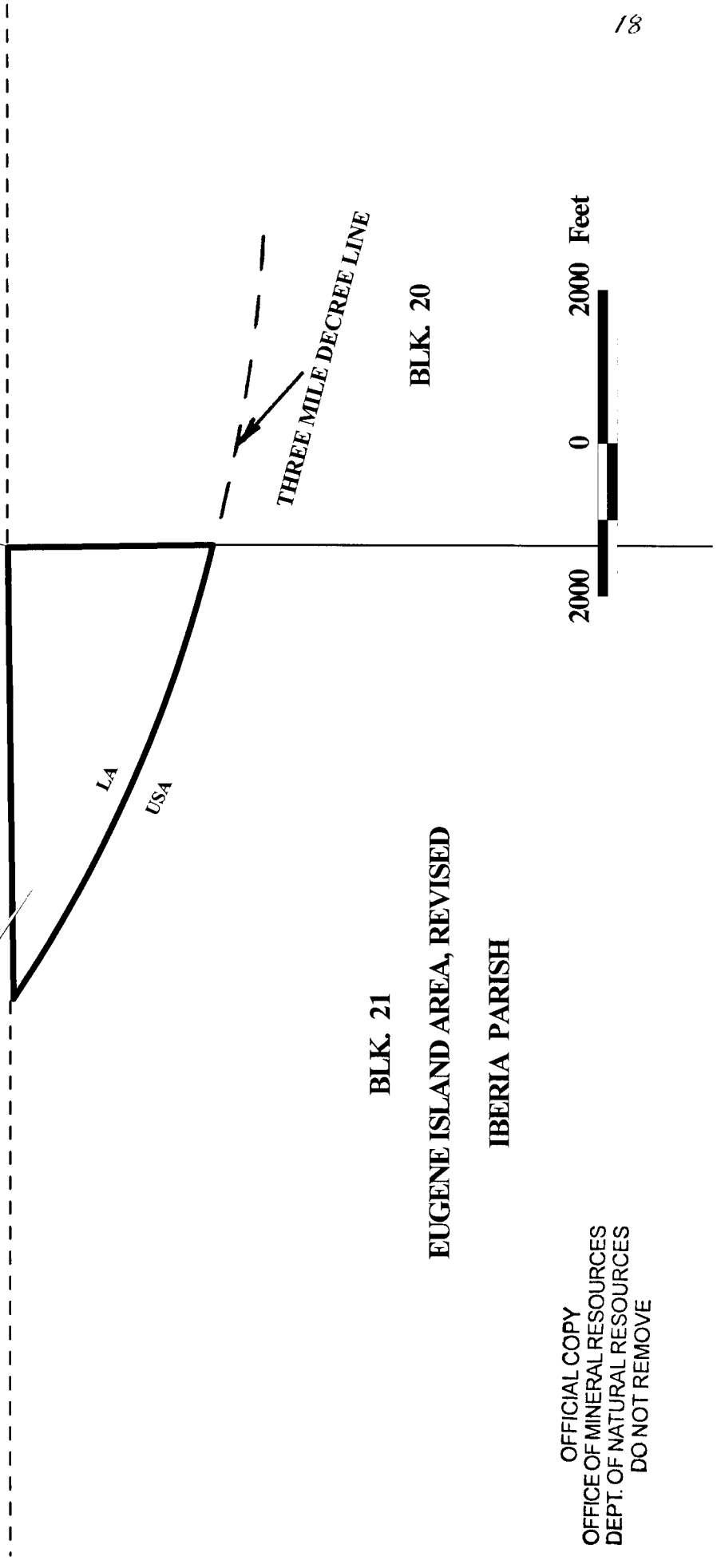
Bidder	Cash Payment	Price / Acre	Rental	Oil	Gas	Other



S.L. 340

TR 32067  
210.69 + ACS.  
OCT., 1999

P.O.B.  
X= 1,909,867.04  
Y= 255,394.00



BLK. 21

BLK. 20

EUGENE ISLAND AREA, REVISED

IBERIA PARISH

OFFICIAL COPY  
OFFICE OF MINERAL RESOURCES  
DEPT. OF NATURAL RESOURCES  
DO NOT REMOVE

2000 0 2000 Feet

**TRACT 32068 - PORTION OF BLOCK 20, EUGENE ISLAND AREA, REVISED, Iberia Parish, Louisiana**

That portion of Block 20, Eugene Island Area, Revised, Iberia Parish, Louisiana, belonging to the State of Louisiana and not under mineral lease on October 13, 1999, described as follows: Beginning at the Northwest corner of Block 20, Eugene Island Area, Revised, having Coordinates of X = 1,909,867.04 and Y = 255,394.00; thence East 7,020.96 feet on the North line of said Block 20 to a point having Coordinates of X = 1,916,888.00 and Y = 255,394.00; thence South 3,080.00 feet to a point having Coordinates of X = 1,916,888 and Y = 252,314; thence Northwesterly on an arc having a radius of 18,240.60 feet and a center at X = 1,914,373 and Y = 270,380 to a point on the West line of said Block 20 having Coordinates of X = 1,909,867.04 and Y = 252,704.71; thence North 2,689.29 feet on the said West line to the point of beginning, containing approximately **501.83 acres**, as shown outlined in red on a plat on file in the Office of Mineral Resources, Department of Natural Resources, **LESS AND EXCEPT** that portion thereof, if any, which is more than three nautical miles from the coast line as determined by the Report of the Special Master in the litigation in the Supreme Court of the United States styled United States v. State of Louisiana et al No. 9 Original, said three mile line as set out in the June, 1975, decree of the Supreme Court. All bearings, distances and coordinates are based on Louisiana Coordinate System of 1927 (South Zone).

NOTE: The above described tract is in the vicinity of existing shell reefs where drilling and dredging operations must be conducted in strict conformity with the regulations adopted by the Louisiana Department of Wildlife and Fisheries and/or the U.S. Corps of Engineers, U.S. Army.

NOTE: The State of Louisiana does hereby reserve, and this lease shall be subject to, the imprescriptible right of surface use in the nature of a servitude in favor of the Department of Natural Resources, including its Offices and Commissions, for the sole purpose of implementing, constructing, servicing and maintaining approved coastal zone management and/or restoration projects. Utilization of any and all rights derived under this lease by the mineral lessee, its agents, successors or assigns, shall not interfere with nor hinder the reasonable surface use by the Department of Natural Resources, its Offices or Commissions, as hereinabove reserved.

Applicant: J.T. Trimble

Bidder	Cash Payment	Price / Acre	Rental	Oil	Gas	Other

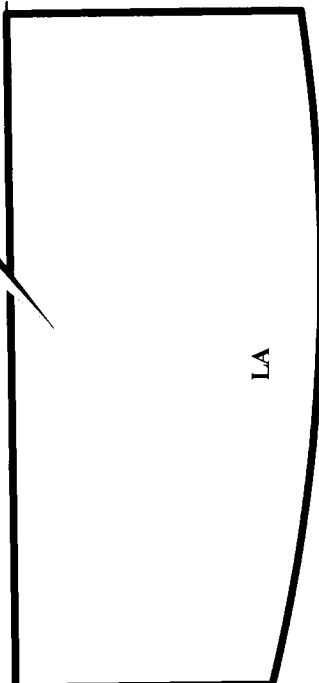


IBERIA PARISH  
ST. MARY PARISH

S.L. 340

TR 32068  
501.83 + ACS.  
OCT., 1999

P.O.B.  
X= 1,909,867.04  
Y= 255,394.00



THREE MILE DECREE LINE

USA

BLK. 21

BLK. 20

EUGENE ISLAND AREA, REVISED

OFFICIAL COPY  
OFFICE OF MINERAL RESOURCES  
DEPT. OF NATURAL RESOURCES  
DO NOT REMOVE

2000 0 2000 Feet



**TRACT 32069 - PORTION OF BLOCK 20, EUGENE ISLAND AREA, REVISED, Iberia and St. Mary Parishes, Louisiana**

That portion of Block 20, Eugene Island Area, Revised, Iberia and St. Mary Parishes, Louisiana, belonging to the State of Louisiana and not under mineral lease on October 13, 1999, described as follows: Beginning at the Northeast corner of Block 20, Eugene Island Area, Revised, having Coordinates of X = 1,924,889.20 and Y = 255,394.00; thence South 7,407.61 feet on the East line of said Block 20 to a point having Coordinates of X = 1,924,889.20 and Y = 247,986.39; thence Northwesterly on an arc having a radius of 18,240.60 feet and a center at X = 1,933,172 and Y = 264,238 to a point having Coordinates of X = 1,920,501 and Y = 251,117; thence Northwesterly on an arc having a radius of 18,240.60 feet and a center at X = 1,924,399 and Y = 268,936 to a point having Coordinates of X = 1,916,888 and Y = 252,314; thence North 3,080.00 feet to a point on the North line of said Block 20 having Coordinates of X = 1,916,888.00 and Y = 255,394.00; thence East 8,001.20 feet on the said North line of said Block 20 to the point of beginning, containing approximately **915.99 acres**, as shown outlined in red on a plat on file in the Office of Mineral Resources, Department of Natural Resources, **LESS AND EXCEPT** that portion thereof, if any, which is more than three nautical miles from the coast line as determined by the Report of the Special Master in the litigation in the Supreme Court of the United States styled United States v. State of Louisiana et al No. 9 Original, said three mile line as set out in the June, 1975, decree of the Supreme Court. All bearings, distances and coordinates are based on Louisiana Coordinate System of 1927 (South Zone).

NOTE: The above described tract is in the vicinity of existing shell reefs where drilling and dredging operations must be conducted in strict conformity with the regulations adopted by the Louisiana Department of Wildlife and Fisheries and/or the U.S. Corps of Engineers, U.S. Army.

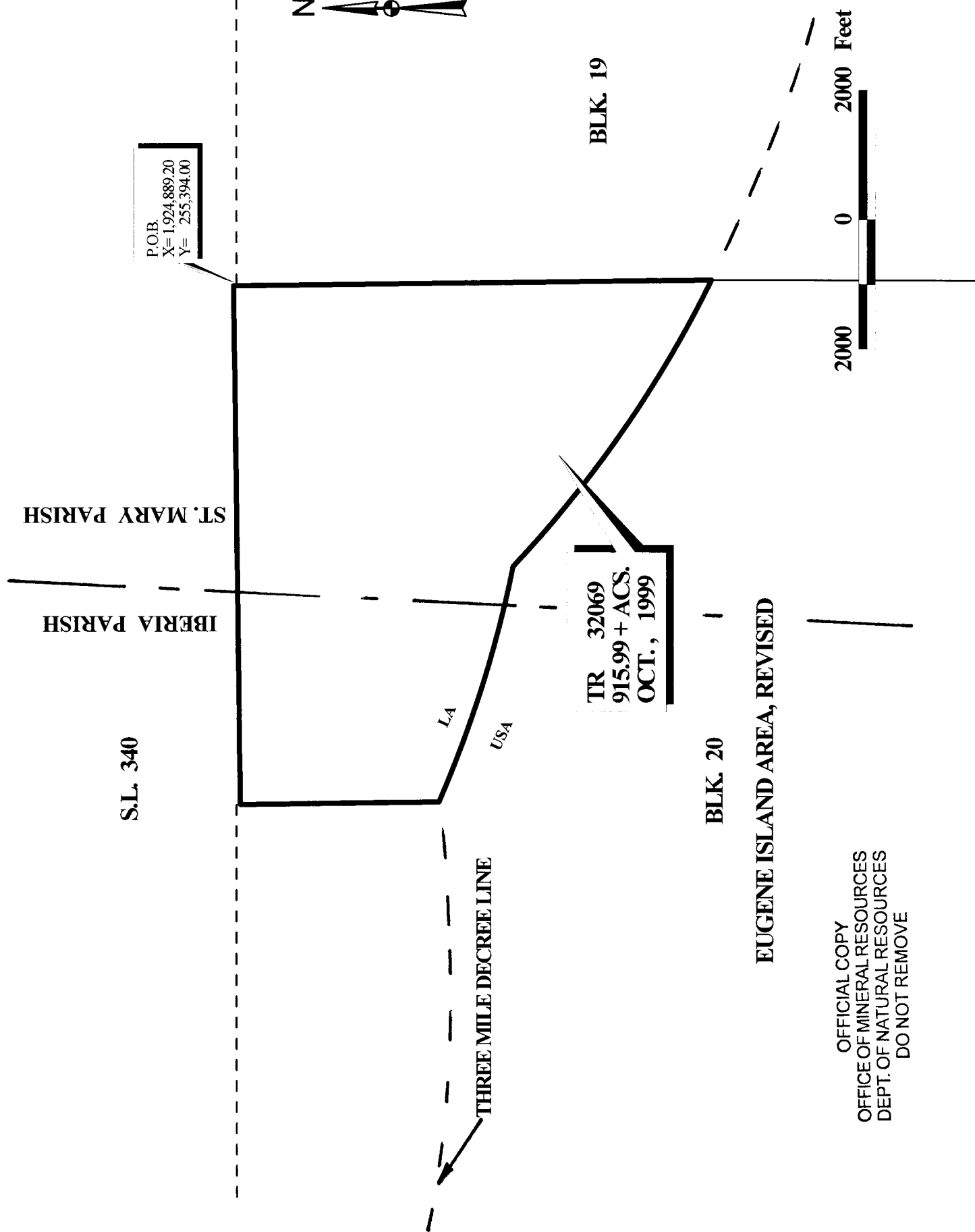
NOTE: The State of Louisiana does hereby reserve, and this lease shall be subject to, the imprescriptible right of surface use in the nature of a servitude in favor of the Department of Natural Resources, including its Offices and Commissions, for the sole purpose of implementing, constructing, servicing and maintaining approved coastal zone management and/or restoration projects. Utilization of any and all rights derived under this lease by the mineral lessee, its agents, successors or assigns, shall not interfere with nor hinder the reasonable surface use by the Department of Natural Resources, its Offices or Commissions, as hereinabove reserved.

Applicant: J.T. Trimble

Bidder	Cash Payment	Price / Acre	Rental	Oil	Gas	Other

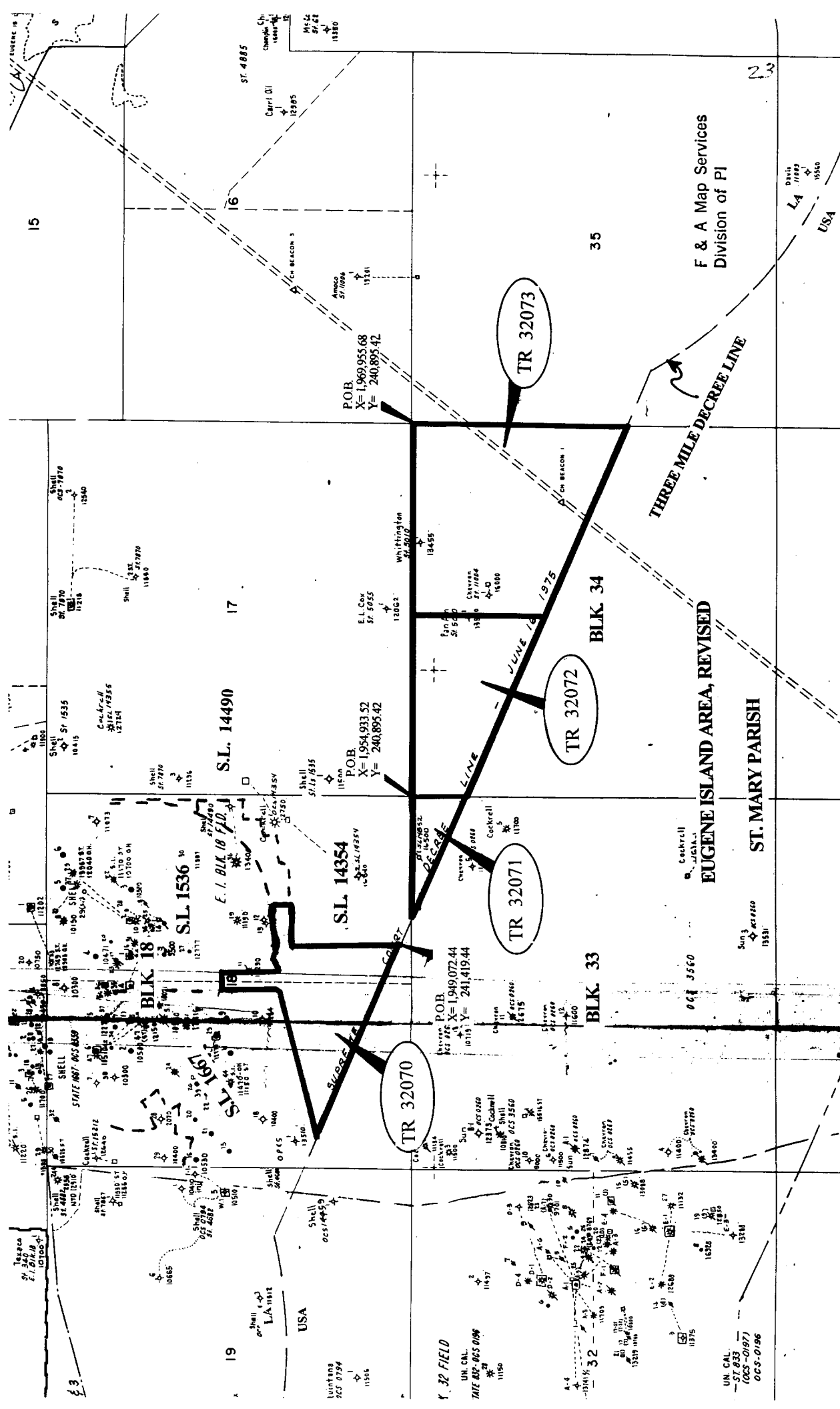


22



NOT TO BE USED WITH A PORTION BID  
FOR INFORMATIONAL PURPOSES ONLY !

MAP NOT TO SCALE



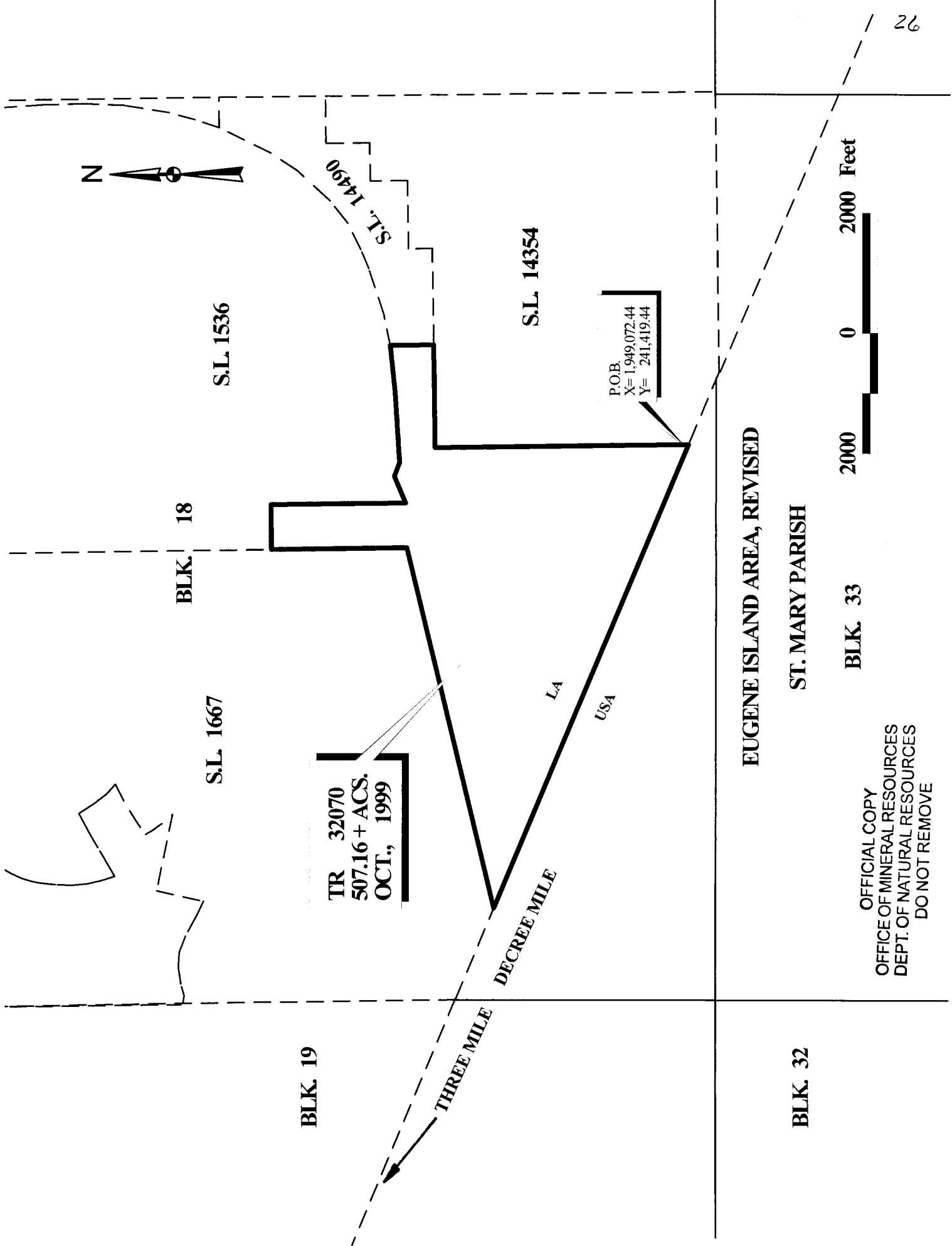
**TRACT 32070 - PORTION OF BLOCK 18, EUGENE ISLAND AREA, REVISED, St. Mary Parish, Louisiana**

That portion of Block 18, Eugene Island Area, Revised, St. Mary Parish, Louisiana, belonging to the State of Louisiana and not under mineral lease on October 13, 1999, described as follows: Beginning at a point located within Block 18, Eugene Island Area, Revised, having Coordinates of X = 1,949,072.44 and Y = 241,419.44; thence Northwesterly along a straight line to the most Southern corner of State Lease No. 1667, as amended, having Coordinates of X = 1,941,421.43 and Y = 244,766.09; thence North 77 degrees 05 minutes 38 seconds East 6,156.53 feet along the Southern boundary of said State Lease No. 1667 to its Southeast corner having Coordinates of X = 1,947,422.44 and Y = 246,141.16; thence North 2,254.26 feet along the East boundary of said State Lease No. 1667 to the most West Southwest corner of State Lease No. 1536, as amended, having Coordinates of X = 1,947,422.44 and Y = 248,395.42; thence along the Southern boundary of said State Lease No. 1536 the following courses: East 741.08 feet, South 2,246.75 feet, North 67 degrees 53 minutes 47 seconds East 481.90 feet, South 67 degrees 45 minutes 04 seconds East 237.70 feet, North 87 degrees 03 minutes 52 seconds East 1,171.54 feet and North 84 degrees 52 minutes 19 seconds East 783.13 feet to the most Southern Northwest corner of State Lease No. 14490 having Coordinates of X = 1,950,780.00 and Y = 246,370.00; thence South 724.57 feet along the West boundary of said State Lease No. 14490 to its Southwest corner located on the North boundary of said State Lease No. 14354 having Coordinates of X = 1,950,780.00 and Y = 245,645.42; thence along the North and West boundaries of said State Lease No. 14354 the following courses: West 1,707.56 feet and South 4,225.98 feet to the point of beginning, containing approximately **507.16 acres**, as shown outlined in red on a plat on file in the Office of Mineral Resources, Department of Natural Resources, **LESS AND EXCEPT** that portion thereof, if any, which is more than three nautical miles from the coast line as determined by the Report of the Special Master in the litigation in the Supreme Court of the United States styled United States v. State of Louisiana et al No. 9 Original, said three mile line as set out in the June, 1975, decree of the Supreme Court. All bearings, distances and coordinates are based on Louisiana Coordinate System of 1927 (South Zone).

NOTE: The State of Louisiana does hereby reserve, and this lease shall be subject to, the imprescriptible right of surface use in the nature of a servitude in favor of the Department of Natural Resources, including its Offices and Commissions, for the sole purpose of implementing, constructing, servicing and maintaining approved coastal zone management and/or restoration projects. Utilization of any and all rights derived under this lease by the mineral lessee, its agents, successors or assigns, shall not interfere with nor hinder the reasonable surface use by the Department of Natural Resources, its Offices or Commissions, as hereinabove reserved.

Applicant: J.T. Trimble

Bidder	Cash Payment	Price / Acre	Rental	Oil	Gas	Other



BLK. 19

BLK. 18

S.L. 1667

S.L. 1536

TR 32070  
507.16 + ACS.  
OCT., 1999

S.L. 14354

P.O.B.  
X= 1,949,072.44  
Y= 241,419.44

LA

USA

THREE MILE  
DECREE MILE

EUGENE ISLAND AREA, REVISED

ST. MARY PARISH

BLK. 32

2000 Feet

0

2000

BLK. 33

OFFICIAL COPY  
OFFICE OF MINERAL RESOURCES  
DEPT. OF NATURAL RESOURCES  
DO NOT REMOVE

**TRACT 32071 - PORTION OF BLOCK 33, EUGENE ISLAND AREA, REVISED, St. Mary Parish, Louisiana**

That portion of Block 33, Eugene Island Area, Revised, St. Mary Parish, Louisiana, belonging to the State of Louisiana and not under mineral lease on October 13, 1999, described as follows: Beginning at the Northeast corner of Block 33, Eugene Island Area, Revised, having Coordinates of X = 1,954,933.52 and Y = 240,895.42; thence South 2,039.69 feet along the East line of said Block 33 to a point having Coordinates of X = 1,954,933.52 and Y = 238,855.73; thence Northwesterly along a straight line to a point on the North line of said Block 33 having Coordinates of X = 1,950,270.44 and Y = 240,895.42; thence East 4,663.08 feet along the North line of said Block 33 to the point of beginning, containing approximately **109.17 acres**, as shown outlined in red on a plat on file in the Office of Mineral Resources, Department of Natural Resources, **LESS AND EXCEPT** that portion thereof, if any, which is more than three nautical miles from the coast line as determined by the Report of the Special Master in the litigation in the Supreme Court of the United States styled United States v. State of Louisiana et al No. 9 Original, said three mile line as set out in the June, 1975, decree of the Supreme Court. All bearings, distances and coordinates are based on Louisiana Coordinate System of 1927 (South Zone).

NOTE: The State of Louisiana does hereby reserve, and this lease shall be subject to, the imprescriptible right of surface use in the nature of a servitude in favor of the Department of Natural Resources, including its Offices and Commissions, for the sole purpose of implementing, constructing, servicing and maintaining approved coastal zone management and/or restoration projects. Utilization of any and all rights derived under this lease by the mineral lessee, its agents, successors or assigns, shall not interfere with nor hinder the reasonable surface use by the Department of Natural Resources, its Offices or Commissions, as hereinabove reserved.

Applicant: J.T. Trimble

Bidder	Cash Payment	Price / Acre	Rental	Oil	Gas	Other



BLK. 17

P.O.B.  
X= 1,954,933.52  
Y= 240,895.42

TR 32071  
109.17 + ACS.  
OCT., 1999

LA

USA

THREE MILE DECREE LINE

BLK. 34

2000 0 2000 Feet

BLK. 33

EUGENE ISLAND AREA, REVISED

ST. MARY PARISH

OFFICIAL COPY  
OFFICE OF MINERAL RESOURCES  
DEPT. OF NATURAL RESOURCES  
DO NOT REMOVE

**TRACT 32072 - PORTION OF BLOCK 34, EUGENE ISLAND AREA, REVISED, St. Mary Parish, Louisiana**

That portion of Block 34, Eugene Island Area, Revised, St. Mary Parish, Louisiana, belonging to the State of Louisiana and not under mineral lease on October 13, 1999, described as follows: Beginning at the Northwest corner of Block 34, Eugene Island Area, Revised, having Coordinates of X = 1,954,933.52 and Y = 240,895.42; thence East 7,511.08 feet along the North line of said Block 34 to a point having Coordinates of X = 1,962,444.60 and Y = 240,895.42; thence South 5,325.14 feet to a point having Coordinates of X = 1,962,444.60 and Y = 235,570.28; thence Northwesterly on a straight line to a point on the West line of said Block 34 having Coordinates of X = 1,954,933.52 and Y = 238,855.73; thence North 2,039.69 feet to the point of beginning, containing approximately **634.96 acres**, as shown outlined in red on a plat on file in the Office of Mineral Resources, Department of Natural Resources, **LESS AND EXCEPT** that portion thereof, if any, which is more than three nautical miles from the coast line as determined by the Report of the Special Master in the litigation in the Supreme Court of the United States styled United States v. State of Louisiana et al No. 9 Original, said three mile line as set out in the June, 1975, decree of the Supreme Court. All bearings, distances and coordinates are based on Louisiana Coordinate System of 1927 (South Zone).

NOTE: The State of Louisiana does hereby reserve, and this lease shall be subject to, the imprescriptible right of surface use in the nature of a servitude in favor of the Department of Natural Resources, including its Offices and Commissions, for the sole purpose of implementing, constructing, servicing and maintaining approved coastal zone management and/or restoration projects. Utilization of any and all rights derived under this lease by the mineral lessee, its agents, successors or assigns, shall not interfere with nor hinder the reasonable surface use by the Department of Natural Resources, its Offices or Commissions, as hereinabove reserved.

Applicant: J.T. Trimble

Bidder	Cash Payment	Price / Acre	Rental	Oil	Gas	Other





BLK. 17

BLK. 18

P.O.B.  
X= 1,954,933.52  
Y= 240,895.42

TR 32072  
634.96 + ACS.  
OCT., 1999

L4

USA

BLK. 33

BLK. 34

EUGENE ISLAND AREA, REVISED

ST. MARY PARISH

THREE MILE DECREE LINE

OFFICIAL COPY  
OFFICE OF MINERAL RESOURCES  
DEPT. OF NATURAL RESOURCES  
DO NOT REMOVE



**TRACT 32073 - PORTION OF BLOCK 34, EUGENE ISLAND AREA, REVISED, St. Mary Parish, Louisiana**

That portion of Block 34, Eugene Island Area, Revised, St. Mary Parish, Louisiana, belonging to the State of Louisiana and not under mineral lease on October 13, 1999, described as follows: Beginning at the Northeast corner of Block 34, Eugene Island Area, Revised, having Coordinates of X = 1,969,955.68 and Y = 240,895.42; thence South 8,610.59 feet along the East line of said Block 34 to a point having Coordinates of X = 1,969,955.68 and Y = 232,284.83; thence Northwesterly on a straight line to a point having Coordinates of X = 1,962,444.60 and Y = 235,570.28; thence North 5,325.14 feet to a point on the North line of said Block 34 having Coordinates of X = 1,962,444.60 and Y = 240,895.42; thence East 7,511.08 feet along the North line of said Block 34 to the point of beginning, containing approximately **1,201.47 acres**, as shown outlined in red on a plat on file in the Office of Mineral Resources, Department of Natural Resources, **LESS AND EXCEPT** that portion thereof, if any, which is more than three nautical miles from the coast line as determined by the Report of the Special Master in the litigation in the Supreme Court of the United States styled United States v. State of Louisiana et al No. 9 Original, said three mile line as set out in the June, 1975, decree of the Supreme Court. All bearings, distances and coordinates are based on Louisiana Coordinate System of 1927 (South Zone).

NOTE: The State of Louisiana does hereby reserve, and this lease shall be subject to, the imprescriptible right of surface use in the nature of a servitude in favor of the Department of Natural Resources, including its Offices and Commissions, for the sole purpose of implementing, constructing, servicing and maintaining approved coastal zone management and/or restoration projects. Utilization of any and all rights derived under this lease by the mineral lessee, its agents, successors or assigns, shall not interfere with nor hinder the reasonable surface use by the Department of Natural Resources, its Offices or Commissions, as hereinabove reserved.

Applicant: J.T. Trimble

Bidder	Cash Payment	Price / Acre	Rental	Oil	Gas	Other

BLK. 17

BLK. 16

P.O.B.  
X= 1,969,955.68  
Y= 240,895.42



TR 32073  
1201.47 + ACS.  
OCT., 1999

THREE MILE DECREE LINE

BLK. 35

LA  
USA

BLK. 34

EUGENE ISLAND AREA, REVISED

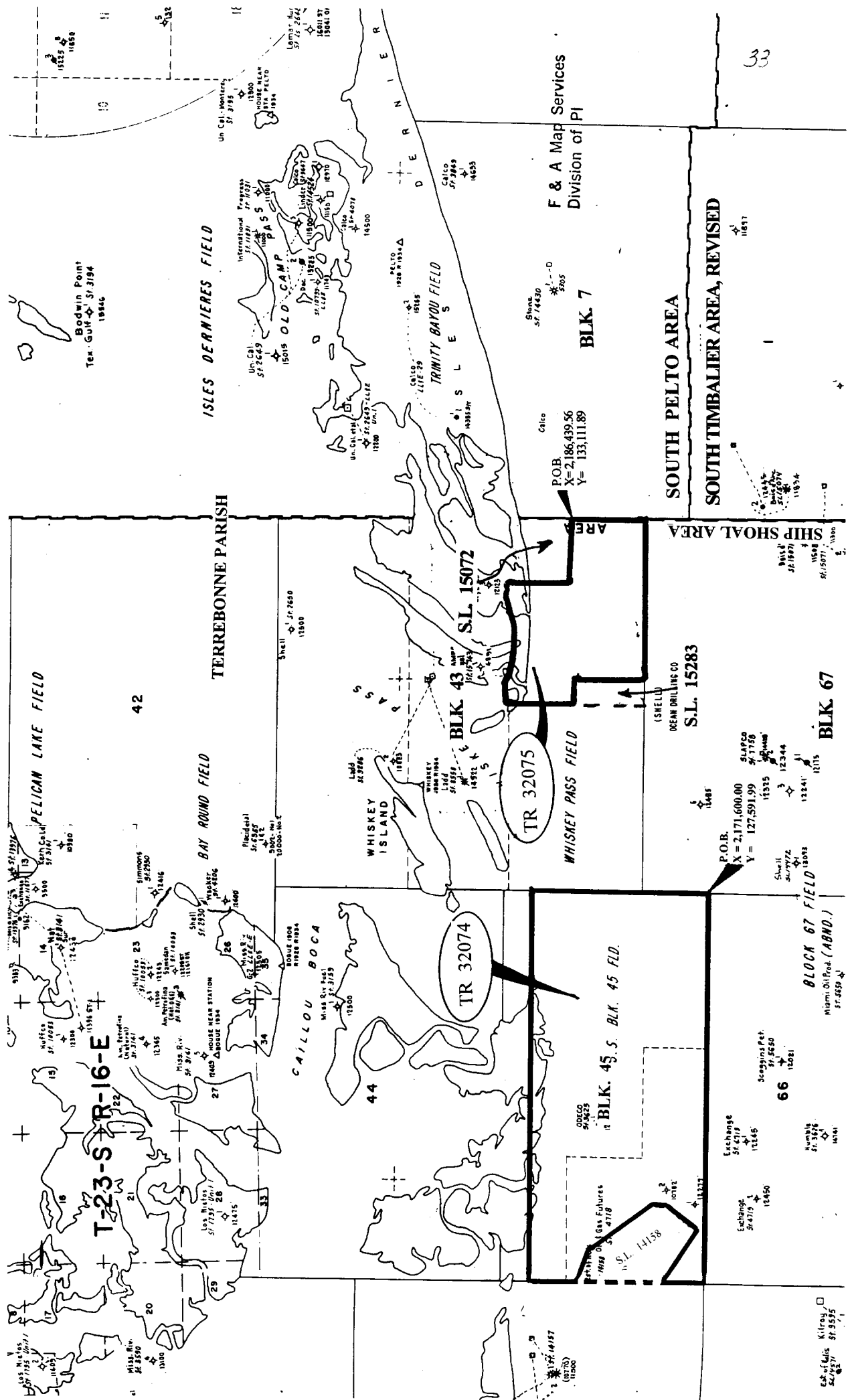
ST. MARY PARISH

OFFICIAL COPY  
OFFICE OF MINERAL RESOURCES  
DEPT. OF NATURAL RESOURCES  
DO NOT REMOVE

2000 0 2000 Feet

32

MAP NOT TO SCALE



**TRACT 32074 - PORTION OF BLOCK 45, SHIP SHOAL AREA, Terrebonne Parish, Louisiana**

That portion of Block 45, Ship Shoal Area, Terrebonne Parish, Louisiana, belonging to the State of Louisiana and not under mineral lease on October 13, 1999, described as follows: Beginning at the Southeast corner of Block 45, Ship Shoal Area, having Coordinates of X = 2,171,600.00 and Y = 127,591.99; thence West 15,600.00 feet along the South line of said Block 45 to its Southwest corner having Coordinates of X = 2,156,000.00 and Y = 127,591.99; thence North 1,805.25 feet along the West line of said Block 45 to a point on the South line of State Lease No. 14158, as amended, having Coordinates of X = 2,156,000.00 and Y = 129,397.24; thence South 56 degrees 54 minutes 25 seconds East 2,614.03 feet along the South line of said State Lease No. 14158 to its Southern most corner having Coordinates of X = 2,158,190.00 and Y = 127,969.98; thence North 39 degrees 23 minutes 27 seconds East 1,591.54 feet along the South line of said State Lease No. 14158 to its Southeast corner having Coordinates of X = 2,159,200.00 and Y = 129,199.98; thence North 490.00 feet along the East line of said State Lease No. 14158 to its Eastern most Northeast corner having Coordinates of X = 2,159,200.00 and Y = 129,689.98; thence North 36 degrees 34 minutes 14 seconds West 3,063.04 feet to a point on the East line of said State Lease No. 14158 having Coordinates of X = 2,157,375.00 and Y = 132,149.98; thence North 65 degrees 46 minutes 56 seconds West 1,507.69 feet to a point on the West line of said Block 45, Ship Shoal Area, having Coordinates of X = 2,156,000.00 and Y = 132,768.44; thence North 1,804.32 feet along the West line of said Block 45 to a point having Coordinates of X = 2,156,000.00 and Y = 134,572.76; thence East 15,600.00 feet to a point on the East line of said Block 45 having Coordinates of X = 2,171,600.00 and Y = 134,572.76; thence South 6,980.77 feet along the East line of said Block 45 to the point of beginning, containing approximately 2,284.84 acres, as shown outlined in red on a plat on file in the Office of Mineral Resources, Department of Natural Resources. All bearings, distances and coordinates are based on Louisiana Coordinate System of 1927 (South Zone).

NOTE: The above tract is located in or near an oyster restricted area and all operations in such area must be conducted in strict conformity with the stipulations and/or regulations of the Louisiana Department of Wildlife and Fisheries.

NOTE: The State of Louisiana does hereby reserve, and this lease shall be subject to, the imprescriptible right of surface use in the nature of a servitude in favor of the Department of Natural Resources, including its Offices and Commissions, for the sole purpose of implementing, constructing, servicing and maintaining approved coastal zone management and/or restoration projects. Utilization of any and all rights derived under this lease by the mineral lessee, its agents, successors or assigns, shall not interfere with nor hinder the reasonable surface use by the Department of Natural Resources, its Offices or Commissions, as hereinabove reserved.

Applicant: K-Exploration Co.

Bidder	Cash Payment	Price / Acre	Rental	Oil	Gas	Other

**TR 32074**  
**2,284.84 + ACS.**  
**OCT, 1999**

**TERRERBONNE PARISH  
SHIP SHOAL AREA**

**A Gap**

**4-2000**

BLK 46

**S.L. 14158**

# BLK 45

**P.O.B.**  
**X=2,171,600.00**  
**Y= 127,591.99**

**BLK 66**

0

2000 0 2000 Feet

34

XX  
E  
M

**TRACT 32075 - PORTION OF BLOCK 43, SHIP SHOAL AREA, Terrebonne Parish, Louisiana**

That portion of Block 43, Ship Shoal Area, Terrebonne Parish, Louisiana, belonging to the State of Louisiana and not under mineral lease on October 13, 1999, described as follows: Beginning at the Southeast corner of State Lease No. 15072 on the East line of Block 43, Ship Shoal Area, having Coordinates of X = 2,186,439.56 and Y = 133,111.89; thence South 00 degrees 17 minutes 30 seconds East 2,914.49 feet along the East line of said Block 43 to its Southeast corner having Coordinates of X = 2,186,454.40 and Y = 130,197.44; thence West 6,304.40 feet along the South line of said Block 43 to the Southeast corner of State Lease No. 15283 having Coordinates of X = 2,180,150.00 and Y = 130,197.44; thence North 2,800.00 feet along the East line of said State Lease No. 15283 to its Northeast corner having Coordinates of X = 2,180,150.00 and Y = 132,997.44; thence West 1,000.00 feet along the North line of said State Lease No. 15283 to its Northwest corner having Coordinates of X = 2,179,150.00 and Y = 132,997.44; thence North 2,682.05 feet to a point being on the coastline as established by the 1975 Court Decree having Coordinates of X = 2,179,150.00 and Y = 135,679.49; thence Northeasterly in a straight line along said coastline to a point having Coordinates of X = 2,179,937 and Y = 135,695; thence Southeasterly in a straight line to a point having Coordinates of X = 2,180,645 and Y = 135,457; thence Southeasterly in a straight line to a point having Coordinates of X = 2,182,166 and Y = 135,368; thence Northeasterly in a straight line to a point having Coordinates of X = 2,183,331 and Y = 135,655; thence Southeasterly in a straight line to the Northwest corner of said State Lease No. 15072 having Coordinates of X = 2,183,937.76 and Y = 135,636.68; thence South 2,524.79 feet along the West line of said State Lease No. 15072 having Coordinates of X = 2,183,937.76 and Y = 133,111.89; thence East 2,501.80 feet along the South line of said State Lease No. 15072 to the point of beginning, containing approximately **690.32 acres**, as shown outlined in red on a plat on file in the Office of Mineral Resources, Department of Natural Resources. All bearings, distances and coordinates are based on Louisiana Coordinate System of 1927 (South Zone).

NOTE: The above tract is located in or near an oyster restricted area and all operations in such area must be conducted in strict conformity with the stipulations and/or regulations of the Louisiana Department of Wildlife and Fisheries.

NOTE: The State of Louisiana does hereby reserve, and this lease shall be subject to, the imprescriptible right of surface use in the nature of a servitude in favor of the Department of Natural Resources, including its Offices and Commissions, for the sole purpose of implementing, constructing, servicing and maintaining approved coastal zone management and/or restoration projects. Utilization of any and all rights derived under this lease by the mineral lessee, its agents, successors or assigns, shall not interfere with nor hinder the reasonable surface use by the Department of Natural Resources, its Offices or Commissions, as hereinabove reserved.

Applicant: K-Exploration Co.



Bidder	Cash Payment	Price / Acre	Rental	Oil	Gas	Other



TERREBONNE PARISH

BLK. 43

1975 COURT DECREE  
COAST LINE

TR 32075  
690.32 + ACS.  
OCT., 1999

S.L. 15072

BLK. 7

P.O.B.  
X= 2,186,439.56  
Y= 133,111.89

S.L. 15283

SHIP SHOAL AREA

OFFICIAL COPY  
OFFICE OF MINERAL RESOURCES  
DEPT. OF NATURAL RESOURCES  
DO NOT REMOVE

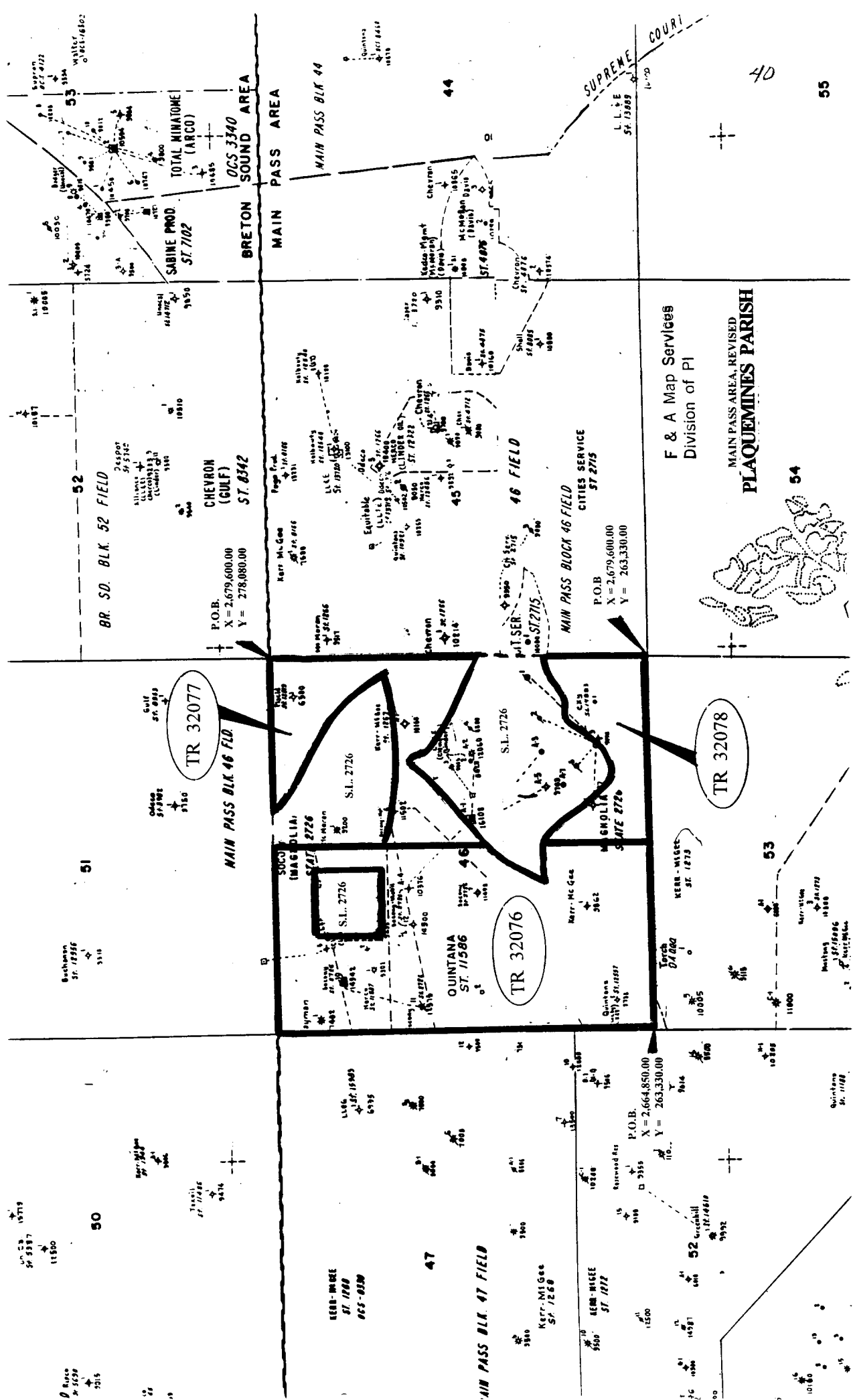
BLK. 67

2000 0 2000 Feet

SOUTH PELTO AREA

SOUTH TIMBALIER AREA, REVISED

MAP NOT TO SCALE



**TRACT 32076 - PORTION OF BLOCK 46, MAIN PASS AREA, REVISED, Plaquemines Parish, Louisiana**

That portion of Block 46, Main Pass Area, Revised, Plaquemines Parish, Louisiana, belonging to the State of Louisiana and not under mineral lease on October 13, 1999, described as follows: Beginning at the Southwest corner of Block 46, Main Pass Area, Revised, having Coordinates of X = 2,664,850.00 and Y = 263,330.00; thence North 14,750.00 feet along the West line of said Block 46 to its Northwest corner having Coordinates of X = 2,664,850.00 and Y = 278,080.00; thence East 7,375.00 feet along the North line of said Block 46 to the Northwest corner of the Northeast portion of State Lease No. 2726, as amended, having Coordinates of X = 2,672,225.00 and Y = 278,080.00; thence South 4,400.00 feet along the West boundary of the Northeast portion of said State Lease No. 2726 to its Southwest corner having Coordinates of X = 2,672,225.00 and Y = 273,680.00; thence South 3,823.73 feet to a point on the Northern boundary of the Southeast portion of said State Lease No. 2726 having Coordinates of X = 2,672,225.00 and Y = 269,856.27; thence Southwesterly, Northeasterly and Southeasterly along the boundary of the Southeast portion of said State Lease No. 2726 to a point having Coordinates of X = 2,672,225.00 and Y = 267,480.34; thence South 4,150.34 feet to a point on the South line of said Block 46 having Coordinates of X = 2,672,225.00 and Y = 263,330.00; thence West 7,375.00 feet along said South line of said Block 46 to the point of beginning, **LESS AND EXCEPT** all of the Northwest portion of State Lease No. 2726, as amended, which falls entirely within the above described tract and also **LESS AND EXCEPT** any portion of the Northeast and Southeast portions of State Lease No. 2726, as amended, that may fall within the above described tract, containing approximately 2,292.30 acres, as shown outlined in red on a plat on file in the Office of Mineral Resources, Department of Natural Resources. All bearings, distances and coordinates are based on Louisiana Coordinate System of 1927 (South Zone).

NOTE: The State of Louisiana does hereby reserve, and this lease shall be subject to, the imprescriptible right of surface use in the nature of a servitude in favor of the Department of Natural Resources, including its Offices and Commissions, for the sole purpose of implementing, constructing, servicing and maintaining approved coastal zone management and/or restoration projects. Utilization of any and all rights derived under this lease by the mineral lessee, its agents, successors or assigns, shall not interfere with nor hinder the reasonable surface use by the Department of Natural Resources, its Offices or Commissions, as hereinabove reserved.

Applicant: Trivalence Minerals Inc.

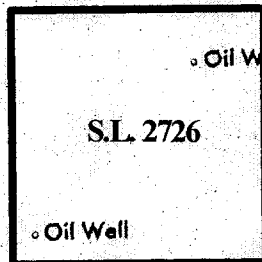
Bidder	Cash Payment	Price / Acre	Rental	Oil	Gas	Other

BLK. 50

BLK. 51

BLK. 47

BLK. 46



Oil Well

Oil Well

S.L. 2726

Oil Well

S.L. 2726



TR 32076  
2292.30 +Acc.  
OCT., 1999

Platform

Platform

Platform

S.L. 2726

P.O.B.  
X = 2,664,850.00  
Y = 263,330.00

MAIN PASS AREA, REVISED  
PLAQUEMINES PARISH

2000

0

2000 Feet

OFFICIAL COPY  
OFFICE OF MINERAL RESOURCES  
DEPT. OF NATURAL RESOURCES  
DO NOT REMOVE

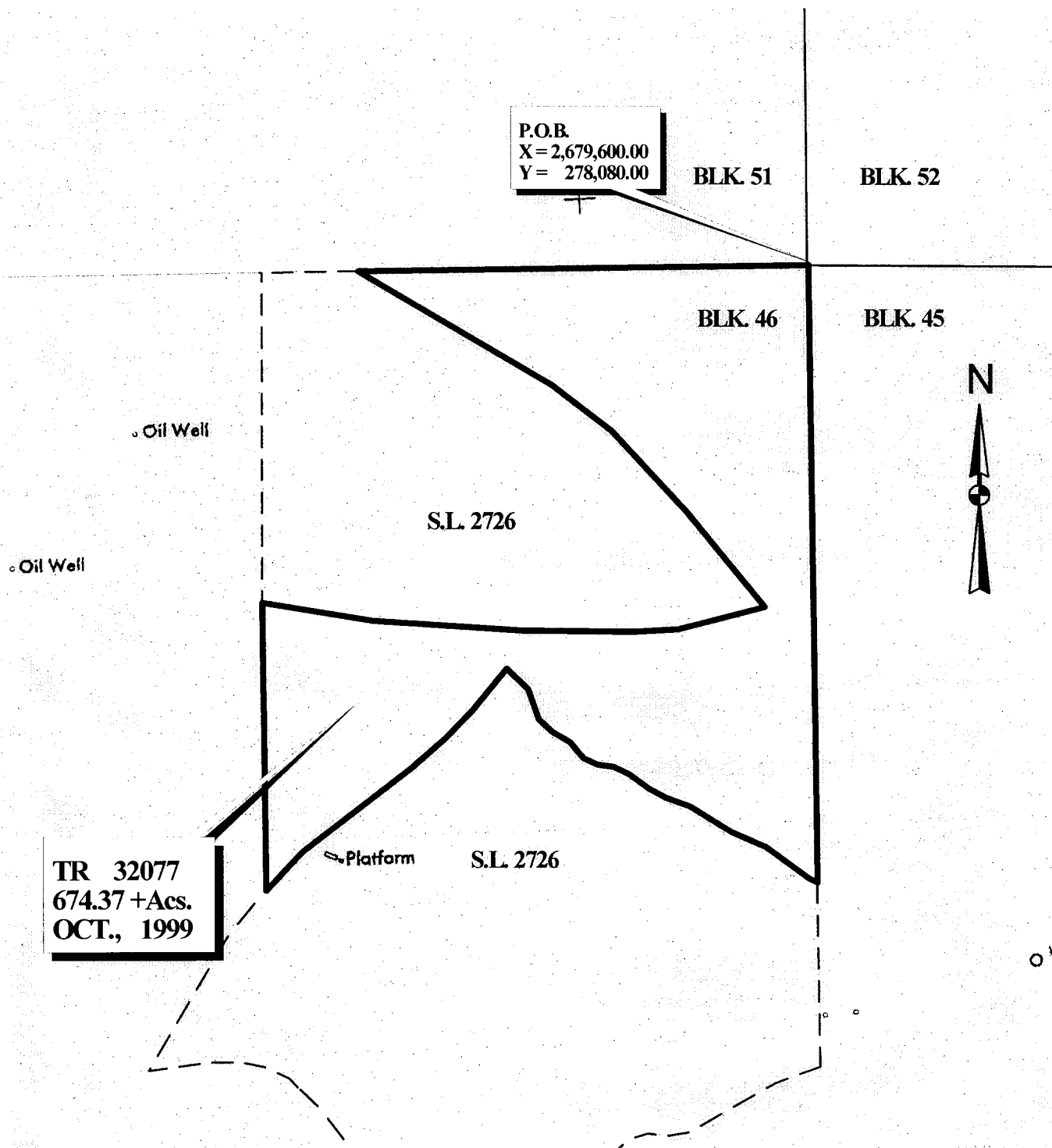
**TRACT 32077 - PORTION OF BLOCK 46, MAIN PASS AREA, REVISED, Plaquemines Parish, Louisiana**

That portion of Block 46, Main Pass Area, Revised, Plaquemines Parish, Louisiana, belonging to the State of Louisiana and not under mineral lease on October 13, 1999, described as follows: Beginning at the Northeast corner of Block 46, Main Pass Area, Revised, having Coordinates of X = 2,679,600.00 and Y = 278,080.00; thence South 8,220.26 feet along the East line of said Block 46 to the Northeast corner of the Southeast portion of State Lease No. 2726, as amended, having Coordinates of X = 2,679,600.00 and Y = 269,859.74; thence Northwesterly and Southwesterly along the North boundary of the Southeast portion of said State Lease No. 2726 to a point having Coordinates of X = 2,672,225.00 and Y = 269,856.27; thence North 3,823.73 feet to the Southwest corner of the Northeast portion of said State Lease No. 2726 having Coordinates of X = 2,672,225.00 and Y = 273,680.00; thence Southeasterly, Northeasterly and Northwesterly along the boundary of the Northeast portion of said State Lease No. 2726 to its Northeast corner which lies on the North line of said Block 46 having Coordinates of X = 2,673,575.00 and Y = 2,780,080.00; thence East 6,025.00 feet along the North line of said Block 46 to the point of beginning, **LESS AND EXCEPT** any portion of State Lease No. 2726, as amended, that may lie within the above described tract, containing approximately **674.37 acres**, as shown outlined in red on a plat on file in the Office of Mineral Resources, Department of Natural Resources. All bearings, distances and coordinates are based on Louisiana Coordinate System of 1927 (South Zone).

NOTE: The State of Louisiana does hereby reserve, and this lease shall be subject to, the imprescriptible right of surface use in the nature of a servitude in favor of the Department of Natural Resources, including its Offices and Commissions, for the sole purpose of implementing, constructing, servicing and maintaining approved coastal zone management and/or restoration projects. Utilization of any and all rights derived under this lease by the mineral lessee, its agents, successors or assigns, shall not interfere with nor hinder the reasonable surface use by the Department of Natural Resources, its Offices or Commissions, as hereinabove reserved.

Applicant: Trivalence Minerals Inc.

Bidder	Cash Payment	Price / Acre	Rental	Oil	Gas	Other



**MAIN PASS AREA, REVISED  
PLAQUEMINES PARISH**

2000 0 2000 Feet

OFFICIAL COPY  
OFFICE OF MINERAL RESOURCES  
DEPT. OF NATURAL RESOURCES  
DO NOT REMOVE

**TRACT 32078 - PORTION OF BLOCK 46, MAIN PASS AREA, REVISED, Plaquemines Parish, Louisiana**

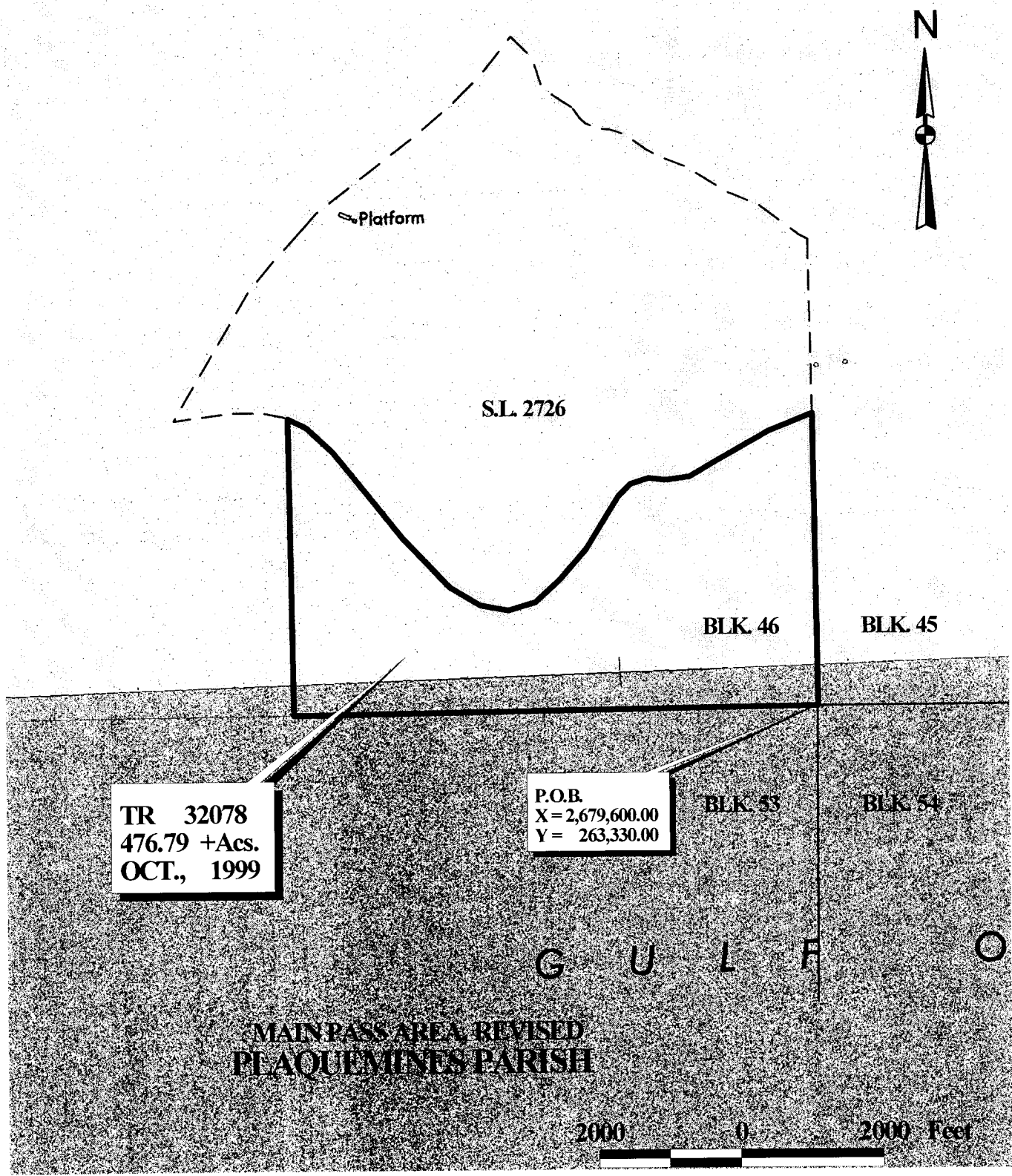
That portion of Block 46, Main Pass Area, Revised, Plaquemines Parish, Louisiana, belonging to the State of Louisiana and not under mineral lease on October 13, 1999, described as follows: Beginning at the Southeast corner of Block 46, Main Pass Area, Revised, having Coordinates of X = 2,679,600.00 and Y = 263,330.00; thence West 7,375.00 feet along the South line of said Block 46 to a point having Coordinates of X = 2,672,225.00 and Y = 263,330.00; thence North 4,150.34 feet to a point on the Southern boundary of the Southeast portion of State Lease No. 2726, as amended, having Coordinates of X = 2,672,225.00 and Y = 267,480.34; thence along said Southern boundary Southeasterly, Northeasterly, Southeasterly and Northeasterly to the Southeast corner of the Southeast portion of said State Lease No. 2726, which lies on the East line of said Block 46 having Coordinates of X = 2,679,600.00 and Y = 267,420.00; thence South 4,090.00 feet along the East line of said Block 46 to the point of beginning, **LESS AND EXCEPT** any portion of State Lease No. 2726, as amended, that may lie within the above described tract, containing approximately **476.79 acres**, as shown outlined in red on a plat on file in the Office of Mineral Resources, Department of Natural Resources. All bearings, distances and coordinates are based on Louisiana Coordinate System of 1927 (South Zone).

NOTE: The State of Louisiana does hereby reserve, and this lease shall be subject to, the imprescriptible right of surface use in the nature of a servitude in favor of the Department of Natural Resources, including its Offices and Commissions, for the sole purpose of implementing, constructing, servicing and maintaining approved coastal zone management and/or restoration projects. Utilization of any and all rights derived under this lease by the mineral lessee, its agents, successors or assigns, shall not interfere with nor hinder the reasonable surface use by the Department of Natural Resources, its Offices or Commissions, as hereinabove reserved.

Applicant: Trivalence Minerals Inc.

Bidder	Cash Payment	Price / Acre	Rental	Oil	Gas	Other





OFFICIAL COPY  
OFFICE OF MINERAL RESOURCES  
DEPT. OF NATURAL RESOURCES  
DO NOT REMOVE