

**TRACT 37838 - Natchitoches and Winn Parishes, Louisiana**

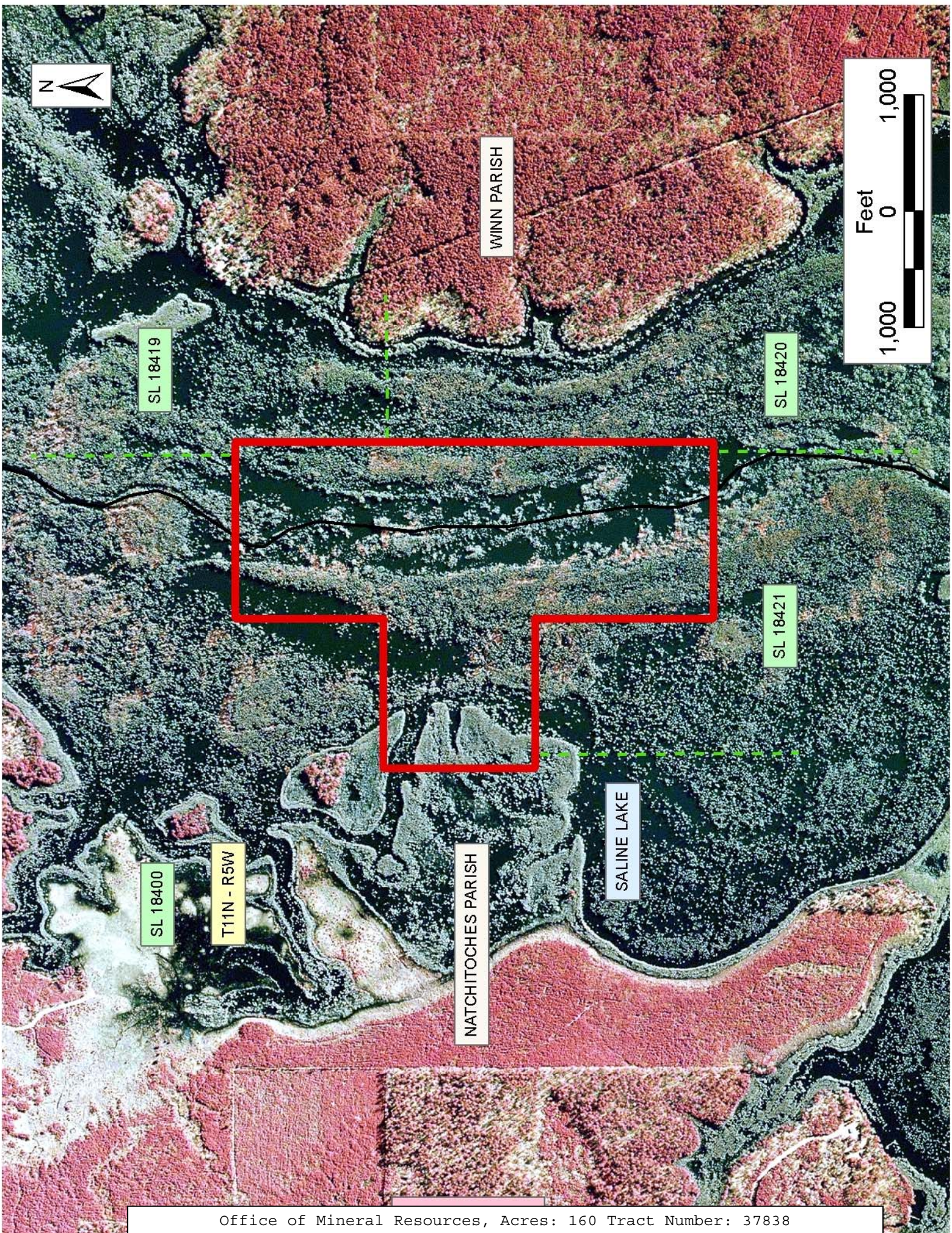
A certain Tract of land, excluding the beds and bottoms of all navigable waters, belonging to and not presently under mineral lease from Louisiana Department Of Wildlife And Fisheries on September 14, 2005, being more fully described as follows: The Southeast Quarter of the Southeast Quarter (SE/4 SE/4) of Section 20, Township 11 North, Range 5 West and the North Half of the Northeast Quarter (N/2 NE/4) and Southeast Quarter of the Northeast Quarter (SE/4 NE/4) of Section 29, Township 11 North, Range 5 West, **LESS AND EXCEPT** those water bottoms owned by the State and presently under lease by virtue of State Lease No. 18400, containing approximately **160 acres.**, all as more particularly outlined on a plat on file in the Office of Mineral Resources, Department of Natural Resources. The description is based on information provided by the State Agency regarding location and ownership of surface and mineral rights. All bearings, distances and coordinates, if applicable, are based on Louisiana Coordinate System of 1927, (North or South Zone).

NOTE: The above description of the Tract nominated for lease has been provided and corrected, where required, exclusively by the nomination party. Any mineral lease selected from this Tract and awarded by the Louisiana State Mineral Board shall be without warranty of any kind, either express, implied, or statutory, including, but not limited to, the implied warranties of merchantability and fitness for a particular purpose. Should the mineral lease awarded by the Louisiana State Mineral Board be subsequently modified, cancelled or abrogated due to the existence of conflicting leases, operating agreements, private claims or other future obligations or conditions which may affect all or any portion of the leased Tract, it shall not relieve the Lessee of the obligation to pay any bonus due thereon to the Louisiana State Mineral Board, nor shall the Louisiana State Mineral Board be obligated to refund any consideration paid by the Lessor prior to such modification, cancellation, or abrogation, including, but not limited to, bonuses, rentals and royalties.

NOTE: There is less and excepted from this tract any acreage belonging to the NW Game and Fish Preserve. Any operations conducted thereon in conjunction with this mineral lease may be subject to rules and regulations promulgated by the Department of Wildlife and Fisheries, on file with the Department of Mineral Resources.

Bidder	Cash Payment	Price/Acre	Rental	Oil	Gas	Other

Applicant: CLAYTON PETROLEUM, LTD. to Agency and by Resolution from the Louisiana Department Of Wildlife And Fisheries authorizing the Mineral Board to act in its behalf



WINN PARISH

SL 18419

SL 18420

SL 18421

SL 18400

T11N - R5W

NATCHITOCHE PARISH

SALINE LAKE



**TRACT 37839 - Natchitoches Parish, Louisiana**

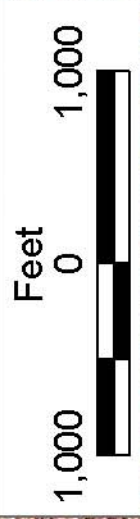
A certain Tract of land, excluding the beds and bottoms of all navigable waters, belonging to and not presently under mineral lease from Natchitoches Parish School Board on September 14, 2005, being more fully described as follows: Beginning at the Northeast corner of the Northwest Quarter of the Southwest Quarter of Section 25, Township 11 North, Range 6 West; thence South along the East line of said Northwest Quarter of the Southwest Quarter a distance of Three Hundred Sixty three (363') feet; thence West Two Hundred Ninety seven (297') feet; thence North Three Hundred Sixty three (363') feet; thence East Two Hundred Ninety seven (297') feet; to the point of beginning, being located entirely within the Northwest Quarter of the Southwest Quarter of said Section 25 and containing approximately **2.50 acres**, all as more particularly outlined on a plat on file in the Office of Mineral Resources, Department of Natural Resources. The description is based on information provided by the State Agency regarding location and ownership of surface and mineral rights. All bearings, distances and coordinates, if applicable, are based on Louisiana Coordinate System of 1927, (North or South Zone).

NOTE: The above description of the Tract nominated for lease has been provided and corrected, where required, exclusively by the nomination party. Any mineral lease selected from this Tract and awarded by the Louisiana State Mineral Board shall be without warranty of any kind, either express, implied, or statutory, including, but not limited to, the implied warranties of merchantability and fitness for a particular purpose. Should the mineral lease awarded by the Louisiana State Mineral Board be subsequently modified, cancelled or abrogated due to the existence of conflicting leases, operating agreements, private claims or other future obligations or conditions which may affect all or any portion of the leased Tract, it shall not relieve the Lessee of the obligation to pay any bonus due thereon to the Louisiana State Mineral Board, nor shall the Louisiana State Mineral Board be obligated to refund any consideration paid by the Lessor prior to such modification, cancellation, or abrogation, including, but not limited to, bonuses, rentals and royalties.

Applicant: CLAYTON PETROLEUM, LTD. to Agency and by Resolution from the Natchitoches Parish School Board authorizing the Mineral Board to act in

Bidder	Cash Payment	Price/Acre	Rental	Oil	Gas	Other

its behalf



NATCHITOCHE PARISH

T11N - R6W



SL 17331

**TRACT 37840 - St. Bernard Parish, Louisiana**

A certain Tract of land, excluding the beds and bottoms of all navigable waters, belonging to and not presently under mineral lease from Lake Borgne Basin Levee District on September 14, 2005, being more fully described as follows: All lands situated in Fractional Section 20 and Fractional Section 21, Township 13 South, Range 13 East, Southeastern Land District, containing approximately **1,600 acres**, all as more particularly outlined on a plat on file in the Office of Mineral Resources, Department of Natural Resources. The description is based on information provided by the State Agency regarding location and ownership of surface and mineral rights. All bearings, distances and coordinates, if applicable, are based on Louisiana Coordinate System of 1927, (North or South Zone).

NOTE: The above description of the Tract nominated for lease has been provided and corrected, where required, exclusively by the nomination party. Any mineral lease selected from this Tract and awarded by the Louisiana State Mineral Board shall be without warranty of any kind, either express, implied, or statutory, including, but not limited to, the implied warranties of merchantability and fitness for a particular purpose. Should the mineral lease awarded by the Louisiana State Mineral Board be subsequently modified, cancelled or abrogated due to the existence of conflicting leases, operating agreements, private claims or other future obligations or conditions which may affect all or any portion of the leased Tract, it shall not relieve the Lessee of the obligation to pay any bonus due thereon to the Louisiana State Mineral Board, nor shall the Louisiana State Mineral Board be obligated to refund any consideration paid by the Lessor prior to such modification, cancellation, or abrogation, including, but not limited to, bonuses, rentals and royalties.

NOTE: The Department of Wildlife and Fisheries will require a minimum bonus of \$150 per acre and a minimum royalty of 25%.

NOTE: The State of Louisiana does hereby reserve, and this lease shall be subject to, the imprescriptible right of surface use in the nature of a servitude in favor of the Department of Natural Resources, including its Offices and Commissions, for the sole purpose of implementing, constructing, servicing and maintaining approved coastal zone management and/or restoration projects. Utilization of any and all rights derived under this lease by the mineral lessee, its agents, successors or assigns, shall not interfere with nor hinder the reasonable surface use by the Department of Natural Resources, its Offices or Commissions, as herein above reserved.

NOTE: The above Tract is located upon a restricted scenic river and all operations in this area must be conducted in strict conformity with the regulations of the Corps of Engineers, U.S. Army.

NOTE: The Department of Wildlife and Fisheries has designated certain areas in the coastal waters of the State of Louisiana as Oyster Seed Bed

Areas. The exact location of those Seed Bed Areas must be obtained from the Department of Wildlife and Fisheries and any work done under a mineral lease from the State of Louisiana may necessarily be conducted in conformity with the rules and regulations promulgated by the said Department of Wildlife and Fisheries for Oyster Seed Bed Areas.

Applicant: PARKE ENERGY, LLC to Agency and by Resolution from the Lake Borgne Basin Levee District authorizing the Mineral Board to act in its behalf

Bidder	Cash Payment	Price/Acre	Rental	Oil	Gas	Other



