

TRACT 37855 - Red River Parish, Louisiana

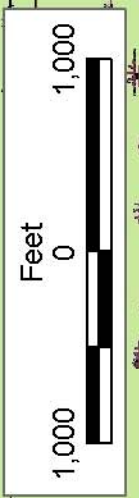
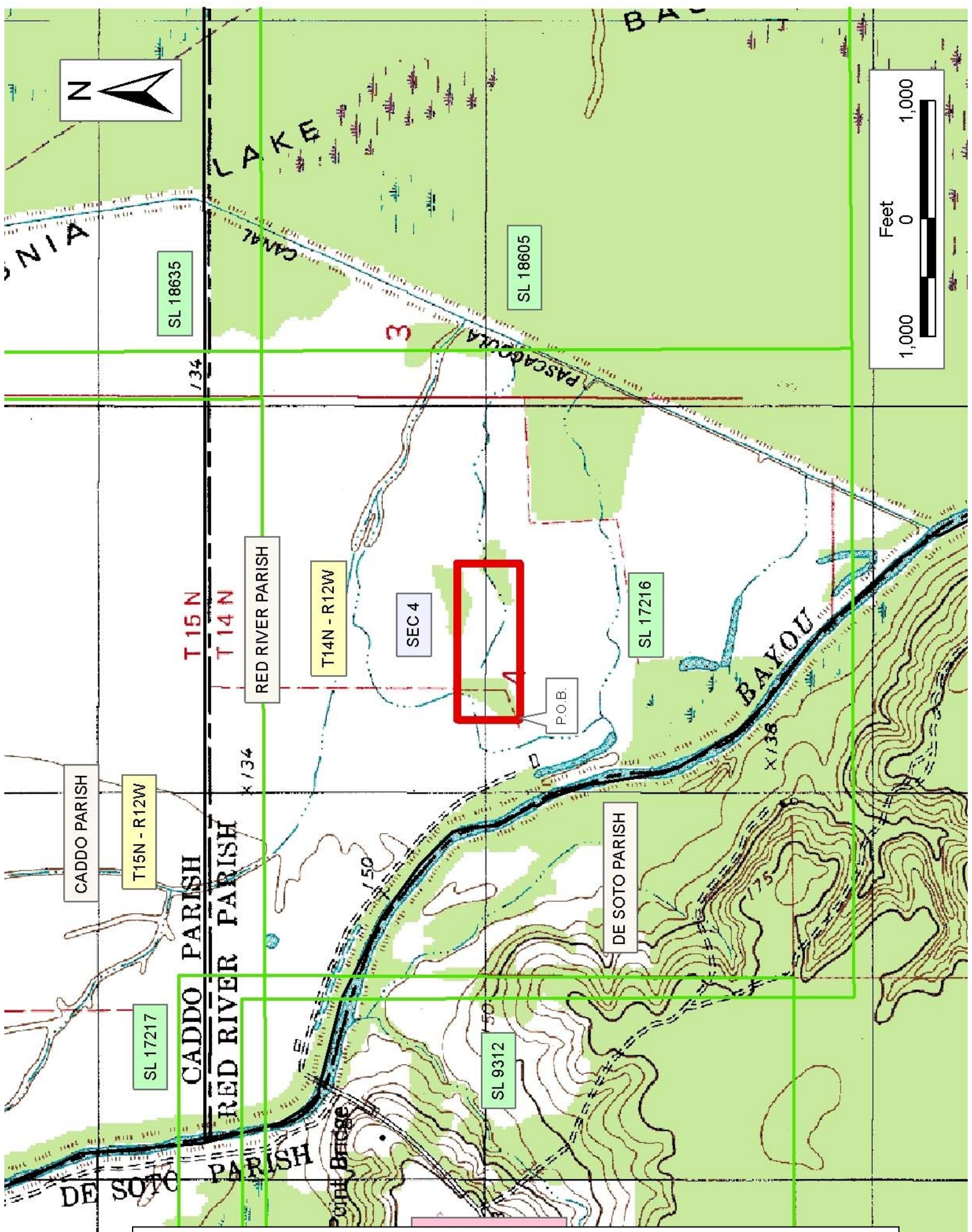
The mineral rights only on and under all lands now or formerly constituting the beds and bottoms of all water bodies of every nature and description, and under all other lands owned by and not presently under mineral lease as of September 14, 2005, from the State of Louisiana situated in Red River Parish, Louisiana, and being more fully described as follows: Beginning at the Southwest corner of Southwest Quarter of Northeast Quarter of Section 4, Township 14 North, Range 12 West, Red River Parish, Louisiana; thence North 528.00 feet to a point; thence East 1,320.00 feet to a point; thence South 528.00 feet to a point; thence West 1,320.00 feet to the point of beginning, containing approximately **16.00 acres**, all as more particularly outlined on a plat on file in the Office of Mineral Resources, Department of Natural Resources. All bearings, distances and coordinates are based on Louisiana Coordinate System of 1927, (North or South Zone), where applicable.

NOTE: The above description of the Tract nominated for lease has been provided and corrected, where required, exclusively by the nomination party. Any mineral lease selected from this Tract and awarded by the Louisiana State Mineral Board shall be without warranty of any kind, either express, implied, or statutory, including, but not limited to, the implied warranties of merchantability and fitness for a particular purpose. Should the mineral lease awarded by the Louisiana State Mineral Board be subsequently modified, cancelled or abrogated due to the existence of conflicting leases, operating agreements, private claims or other future obligations or conditions which may affect all or any portion of the leased Tract, it shall not relieve the Lessee of the obligation to pay any bonus due thereon to the Louisiana State Mineral Board, nor shall the Louisiana State Mineral Board be obligated to refund any consideration paid by the Lessor prior to such modification, cancellation, or abrogation, including, but not limited to, bonuses, rentals and royalties.

NOTE: There shall be no surface operations on said tract without the prior written consent of surface owners.

Applicant: CYPRESS ENERGY CORPORATION

Bidder	Cash Payment	Price/Acre	Rental	Oil	Gas	Other



TRACT 37856 - Caldwell Parish, Louisiana

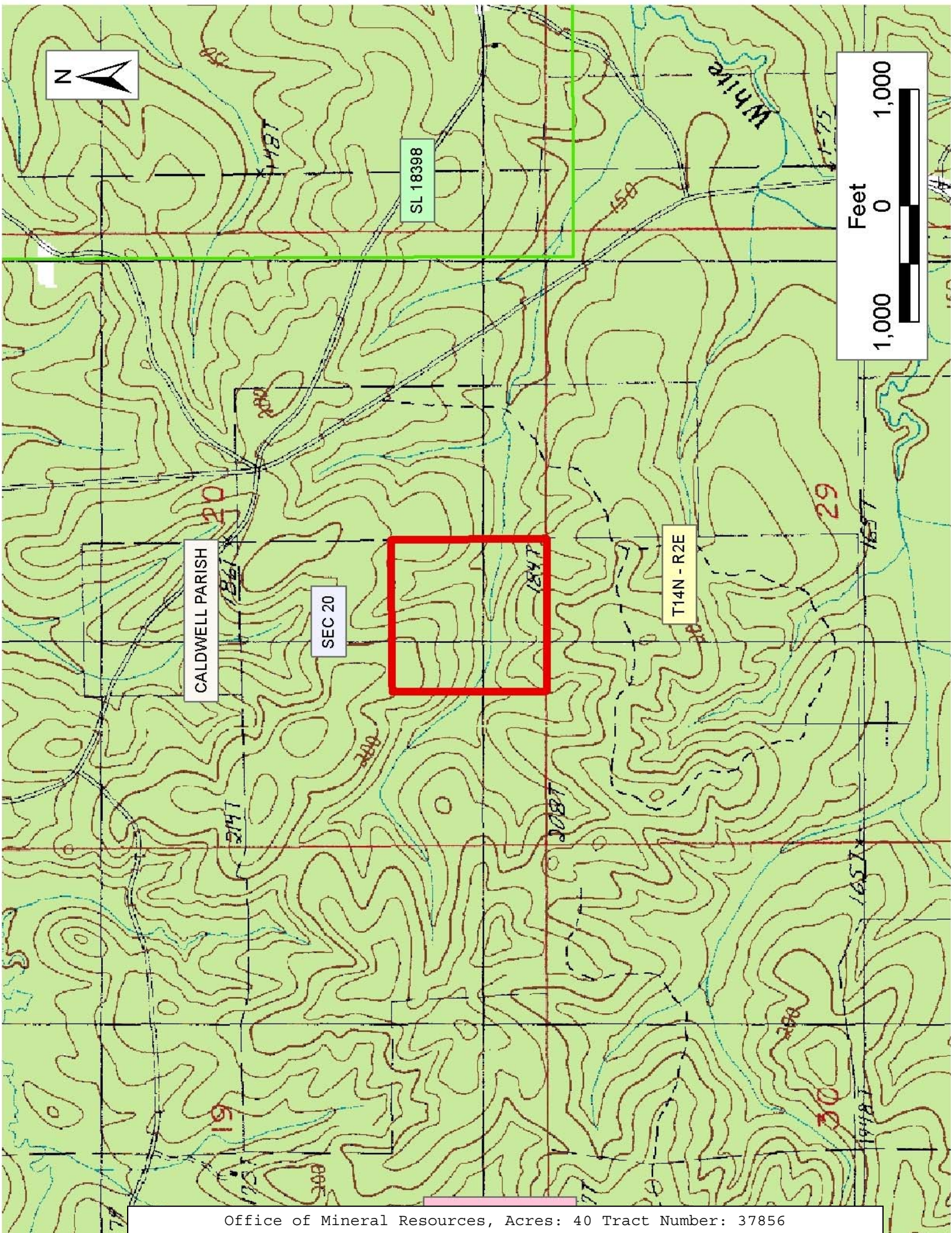
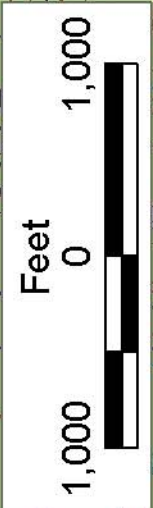
The mineral rights only on and under all lands now or formerly constituting the beds and bottoms of all water bodies of every nature and description, and under all other lands owned by and not presently under mineral lease as of September 14, 2005, from the State of Louisiana situated in Caldwell Parish, Louisiana, and being more fully described as follows: All of the Southeast Quarter of the Southwest Quarter (SE/4 SW/4) of Section 20, Township 14 North, Range 2 East, Caldwell Parish Louisiana, excluding the beds and bottoms of all navigable waters located in said Section, containing approximately **40 acres**, all as more particularly outlined on a plat on file in the Office of Mineral Resources, Department of Natural Resources. All bearings, distances and coordinates are based on Louisiana Coordinate System of 1927, (North or South Zone), where applicable.

NOTE: The above description of the Tract nominated for lease has been provided and corrected, where required, exclusively by the nomination party. Any mineral lease selected from this Tract and awarded by the Louisiana State Mineral Board shall be without warranty of any kind, either express, implied, or statutory, including, but not limited to, the implied warranties of merchantability and fitness for a particular purpose. Should the mineral lease awarded by the Louisiana State Mineral Board be subsequently modified, cancelled or abrogated due to the existence of conflicting leases, operating agreements, private claims or other future obligations or conditions which may affect all or any portion of the leased Tract, it shall not relieve the Lessee of the obligation to pay any bonus due thereon to the Louisiana State Mineral Board, nor shall the Louisiana State Mineral Board be obligated to refund any consideration paid by the Lessor prior to such modification, cancellation, or abrogation, including, but not limited to, bonuses, rentals and royalties.

NOTE: There shall be no surface operations on said tract without the prior written consent from the surface owners.

Applicant: BASIN PROPERTIES, INC.

Bidder	Cash Payment	Price/Acre	Rental	Oil	Gas	Other



TRACT 37857 - Natchitoches and Winn Parishes, Louisiana

All lands, including lands now or formerly constituting the beds and bottoms of all water bodies of every nature and description, owned by and not presently under mineral lease as of September 14, 2005 from the State of Louisiana, situated in Natchitoches and Winn Parishes, Louisiana, and being more fully described as follows: All of Section 5, Township 10 North, Range 5 West, **LESS AND EXCEPT** 83.75 acres, more or less, situated in the East Half of the East Half of said Section 5 and further described as Lots 1, 2 and 3, containing approximately **556.25 acres**, all as more particularly outlined on a plat on file in the Office of Mineral Resources, Department of Natural Resources. All bearings, distances and coordinates are based on Louisiana Coordinate System of 1927, (North or South Zone), where applicable.

NOTE: The above description of the Tract nominated for lease has been provided and corrected, where required, exclusively by the nomination party. Any mineral lease selected from this Tract and awarded by the Louisiana State Mineral Board shall be without warranty of any kind, either express, implied, or statutory, including, but not limited to, the implied warranties of merchantability and fitness for a particular purpose. Should the mineral lease awarded by the Louisiana State Mineral Board be subsequently modified, cancelled or abrogated due to the existence of conflicting leases, operating agreements, private claims or other future obligations or conditions which may affect all or any portion of the leased Tract, it shall not relieve the Lessee of the obligation to pay any bonus due thereon to the Louisiana State Mineral Board, nor shall the Louisiana State Mineral Board be obligated to refund any consideration paid by the Lessor prior to such modification, cancellation, or abrogation, including, but not limited to, bonuses, rentals and royalties.

NOTE: This tract is located within the boundaries of a wildlife management area or refuge and any operations conducted thereon in conjunction with this mineral lease may be subject to rules and regulations promulgated by the Department of Wildlife and Fisheries for the protection of fish, birds and other wildlife including, but not necessarily limited to, the following:

1. No activities will be allowed without written authorization from the Louisiana Department of Wildlife and Fisheries. All projects will be coordinated and approved by the appropriate WMA Supervisor prior to any activities on the wildlife management area.
2. Proposed projects will be evaluated on a case by case basis. Modifications to proposed projects may be required including, but not limited to, access routes, spoil placement, well sites, flow lines and other appurtenant structures required by the Louisiana Department of Wildlife and Fisheries.
3. Compensatory mitigation will be required to offset unavoidable wetland impacts.

4. Removal of all structures, facilities, and equipment will be required within 120 days of abandonment unless otherwise agreed to by the Department of Wildlife and Fisheries.

5. No activities will be allowed during the hunting season unless approved by the Department.

6. Compliance with the said WMA regulations will be required unless otherwise specified by the Department.

7. Prior to submitting applications for wetland permits to Federal and State permitting agencies the lease holder shall coordinate project details with the Louisiana Department of Wildlife and Fisheries, Fur and Refuge Division. Contact person for the Department will be Mike Windham at (504) 568-5886.

Applicant: CLAYTON PETROLEUM, LTD.

Bidder	Cash Payment	Price/Acre	Rental	Oil	Gas	Other

