

TRACT 37823 - Lafourche Parish, Louisiana

All of the lands now or formerly constituting the beds and bottoms of all water bodies of every nature and description the title of which vests in the State of Louisiana, together with all islands arising therein and other lands formed by accretion or by reliction, where allowed by law, excepting tax adjudicated lands, and not presently under mineral lease on September 14, 2005, situated in Lafourche Parish, Louisiana, and more particularly described as follows: Beginning at a point having Coordinates of X = 2,400,550.00 and Y = 284,651.00; thence West 6449.00 feet to the Northeast corner of State Lease No. 18406 having Coordinates of X = 2,394,101.00 and Y = 284,651.00; thence West 7,716.00 feet along the North line of said State Lease No. 18406 to its Northwest corner having Coordinates of X = 2,386,385.00 and Y = 284,651.00; thence North 1,531.40 feet to a point on the boundary of State Lease No. 5259, as amended, having Coordinates of X = 2,386,385.00 and Y = 286,182.40; thence along the boundary of said State Lease No. 5259, as amended, the following courses: North 57 degrees 22 minutes 51 seconds East 255.26 feet to a point having Coordinates of X = 2,386,600.00 and Y = 286,320.00; North 50 degrees 28 minutes 39 seconds East 518.56 feet to a point having Coordinates of X = 2,387,000.00 and Y = 286,650.00 and along an arc having a Radius of 980.00 feet and a Center located at X = 2,386,262.70 and Y = 287,295.59 to a point having Coordinates of X = 2,386,385.00 and Y = 288,267.93; thence North 462.07 feet to a point having Coordinates of X = 2,386,385.00 and Y = 288,730.00; thence East 14,165.00 feet to a point having Coordinates of X = 2,400,550.00 and Y = 288,730.00; thence South 4,079.00 feet to the point of beginning, containing approximately **615 acres**, all as more particularly outlined on a plat on file in the Office of Mineral Resources, Department of Natural Resources. All bearings, distances and coordinates are based on Louisiana Coordinate System of 1927, (North or South Zone), where applicable.

NOTE: The above description of the Tract nominated for lease has been provided and corrected, where required, exclusively by the nomination party. Any mineral lease selected from this Tract and awarded by the Louisiana State Mineral Board shall be without warranty of any kind, either express, implied, or statutory, including, but not limited to, the implied warranties of merchantability and fitness for a particular purpose. Should the mineral lease awarded by the Louisiana State Mineral Board be subsequently modified, cancelled or abrogated due to the existence of conflicting leases, operating agreements, private claims or other future obligations or conditions which may affect all or any portion of the leased Tract, it shall not relieve the Lessee of the obligation to pay any bonus due thereon to the Louisiana State Mineral Board, nor shall the Louisiana State Mineral Board be obligated to refund any consideration paid by the Lessor prior to such modification, cancellation, or abrogation, including, but not limited to, bonuses, rentals and royalties.

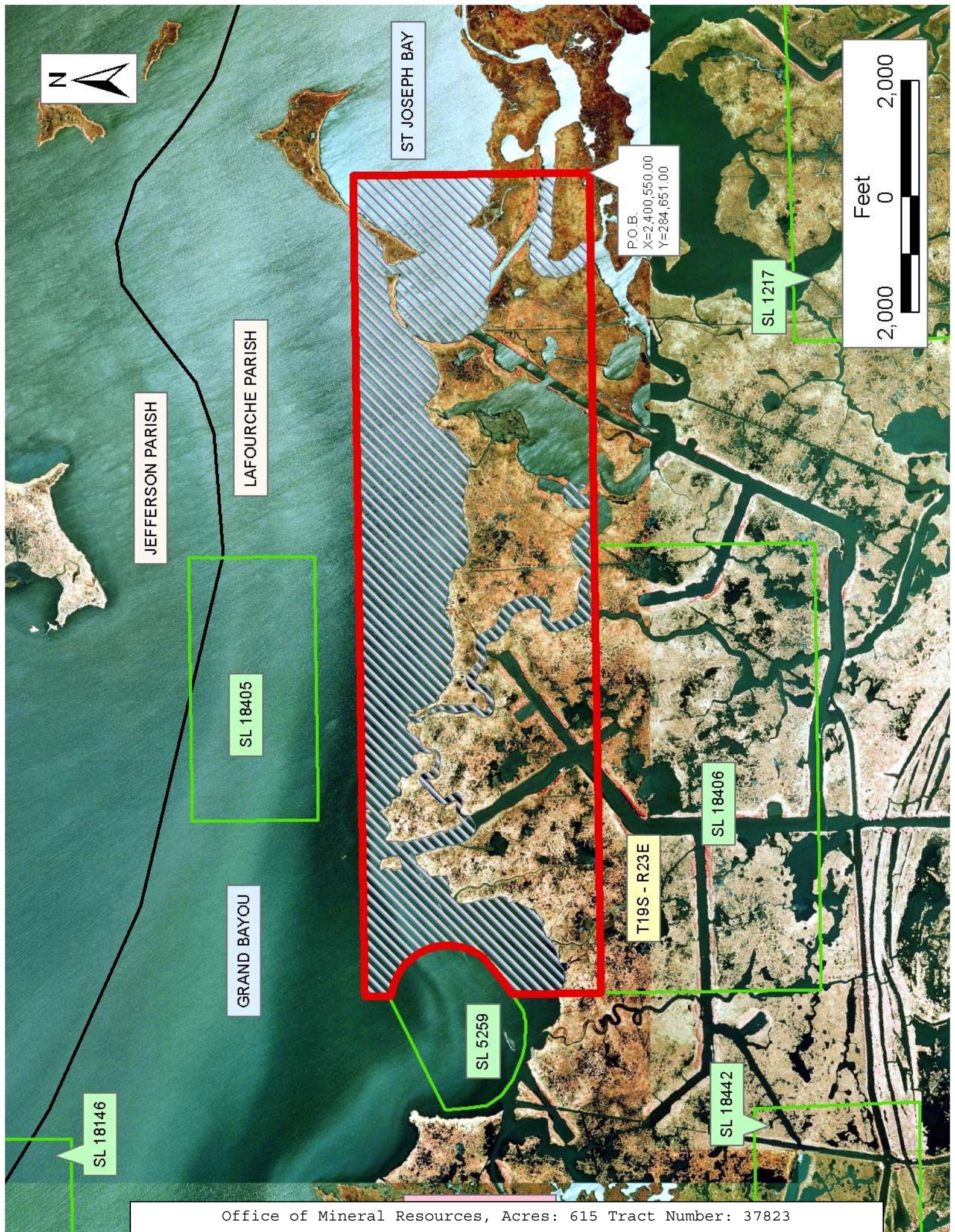
NOTE: The State of Louisiana does hereby reserve, and this lease shall be subject to, the imprescriptible right of surface use in the nature of a

servitude in favor of the Department of Natural Resources, including its Offices and Commissions, for the sole purpose of implementing, constructing, servicing and maintaining approved coastal zone management and/or restoration projects. Utilization of any and all rights derived under this lease by the mineral lessee, its agents, successors or assigns, shall not interfere with nor hinder the reasonable surface use by the Department of Natural Resources, its Offices or Commissions, as herein above reserved.

NOTE: The Department of Wildlife and Fisheries has designated certain areas in the coastal waters of the State of Louisiana as Oyster Seed Bed Areas. The exact location of those Seed Bed Areas must be obtained from the Department of Wildlife and Fisheries and any work done under a mineral lease from the State of Louisiana may necessarily be conducted in conformity with the rules and regulations promulgated by the said Department of Wildlife and Fisheries for Oyster Seed Bed Areas.

Applicant: IRBYLLE RESOURCES

Bidder	Cash Payment	Price/Acre	Rental	Oil	Gas	Other



ST JOSEPH BAY

JEFFERSON PARISH

LAFOURCHE PARISH

SL 18405

GRAND BAYOU

SL 5259

T19S - R23E

SL 18406

SL 18442

P.O.B.
X=2,400,550.00
Y=284,651.00

SL 1217



TRACT 37824 - Lafourche Parish, Louisiana

All of the lands now or formerly constituting the beds and bottoms of all water bodies of every nature and description the title of which vests in the State of Louisiana, together with all islands arising therein and other lands formed by accretion or by reliction, where allowed by law, excepting tax adjudicated lands, and not presently under mineral lease on September 14, 2005, situated in Lafourche Parish, Louisiana, and more particularly described as follows: Beginning at a point having Coordinates of X = 2,400,550.00 and Y = 284,651.00; thence South approximately 3,458 feet to a point on the Northern boundary of State Lease No. 1217, as amended, having a Coordinate of X = 2,400,550.00; thence along the boundary of said State Lease No. 1217, as amended, the following courses: Westerly approximately 2,906 feet to a point and Southerly approximately 6,434 feet to the point of intersection with an East West line having a Coordinate of Y = 274,700.00; thence West approximately 3,592 feet to a point having Coordinates of X = 2,394,101.00 and Y = 274,700.00; thence North 6,151.00 feet to the Southeast corner of State Lease No. 18406 having Coordinates of X = 2,394,101.00 and Y = 280,851.00; thence North 3,800.00 feet along the East line of said State Lease No. 18406 to its Northeast corner having Coordinates of X = 2,394,101.00 and Y = 284,651.00; thence East 6,449.00 feet to the Point of Beginning, containing approximately **143 acres**, all as more particularly outlined on a plat on file in the Office of Mineral Resources, Department of Natural Resources. All bearings, distances and coordinates are based on Louisiana Coordinate System of 1927, (North or South Zone), where applicable.

NOTE: The above description of the Tract nominated for lease has been provided and corrected, where required, exclusively by the nomination party. Any mineral lease selected from this Tract and awarded by the Louisiana State Mineral Board shall be without warranty of any kind, either express, implied, or statutory, including, but not limited to, the implied warranties of merchantability and fitness for a particular purpose. Should the mineral lease awarded by the Louisiana State Mineral Board be subsequently modified, cancelled or abrogated due to the existence of conflicting leases, operating agreements, private claims or other future obligations or conditions which may affect all or any portion of the leased Tract, it shall not relieve the Lessee of the obligation to pay any bonus due thereon to the Louisiana State Mineral Board, nor shall the Louisiana State Mineral Board be obligated to refund any consideration paid by the Lessor prior to such modification, cancellation, or abrogation, including, but not limited to, bonuses, rentals and royalties.

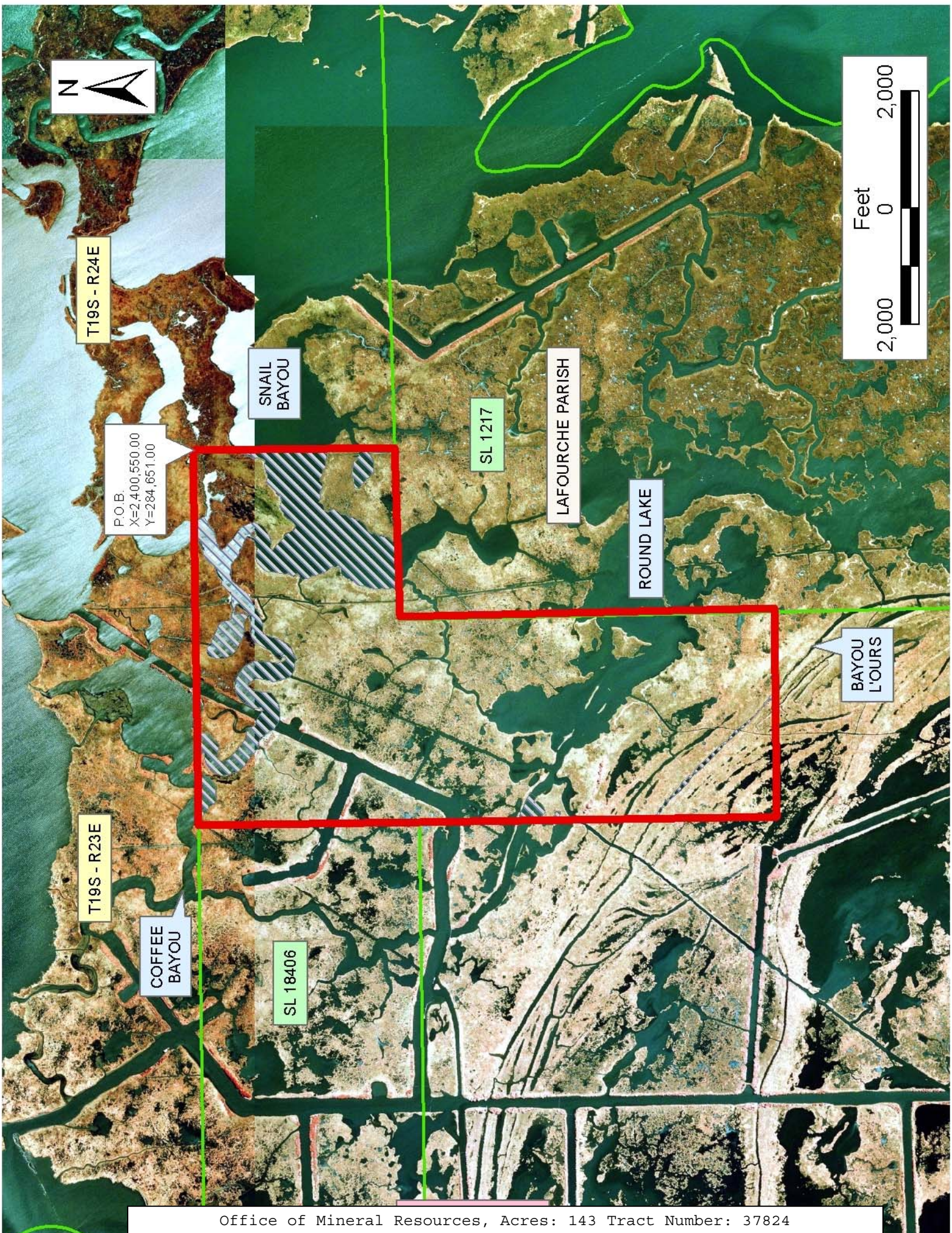
NOTE: The State of Louisiana does hereby reserve, and this lease shall be subject to, the imprescriptible right of surface use in the nature of a servitude in favor of the Department of Natural Resources, including its Offices and Commissions, for the sole purpose of implementing, constructing, servicing and maintaining approved coastal zone management and/or restoration projects. Utilization of any and all rights derived under this lease by the mineral lessee, its agents, successors or assigns,

shall not interfere with nor hinder the reasonable surface use by the Department of Natural Resources, its Offices or Commissions, as herein above reserved.

NOTE: The Department of Wildlife and Fisheries has designated certain areas in the coastal waters of the State of Louisiana as Oyster Seed Bed Areas. The exact location of those Seed Bed Areas must be obtained from the Department of Wildlife and Fisheries and any work done under a mineral lease from the State of Louisiana may necessarily be conducted in conformity with the rules and regulations promulgated by the said Department of Wildlife and Fisheries for Oyster Seed Bed Areas.

Applicant: IRBYLLE RESOURCES

Bidder	Cash Payment	Price/Acre	Rental	Oil	Gas	Other



TRACT 37825 - Lafourche Parish, Louisiana

All of the lands now or formerly constituting the beds and bottoms of all water bodies of every nature and description the title of which vests in the State of Louisiana, together with all islands arising therein and other lands formed by accretion or by reliction, where allowed by law, excepting tax adjudicated lands, and not presently under mineral lease on September 14, 2005, situated in Lafourche Parish, Louisiana, and more particularly described as follows: Beginning at a point having Coordinates of X = 2,386,385.00 and Y = 277,660.00; thence North 3,191.00 feet to the Southwest corner of State Lease No. 18406 having Coordinates of X = 2,386,385.00 and Y = 280,851.00; thence East 7,716.00 feet along the South line of said State Lease No. 18406 to its Southeast corner having Coordinates of X = 2,394,101.00 and Y = 280,851.00; thence South 3,191.00 feet to a point having Coordinates of X = 2,394,101.00 and Y = 277,660.00; thence West 7,716.00 feet to the point of beginning, containing approximately **29 acres**, all as more particularly outlined on a plat on file in the Office of Mineral Resources, Department of Natural Resources. All bearings, distances and coordinates are based on Louisiana Coordinate System of 1927, (North or South Zone), where applicable.

NOTE: The above description of the Tract nominated for lease has been provided and corrected, where required, exclusively by the nomination party. Any mineral lease selected from this Tract and awarded by the Louisiana State Mineral Board shall be without warranty of any kind, either express, implied, or statutory, including, but not limited to, the implied warranties of merchantability and fitness for a particular purpose. Should the mineral lease awarded by the Louisiana State Mineral Board be subsequently modified, cancelled or abrogated due to the existence of conflicting leases, operating agreements, private claims or other future obligations or conditions which may affect all or any portion of the leased Tract, it shall not relieve the Lessee of the obligation to pay any bonus due thereon to the Louisiana State Mineral Board, nor shall the Louisiana State Mineral Board be obligated to refund any consideration paid by the Lessor prior to such modification, cancellation, or abrogation, including, but not limited to, bonuses, rentals and royalties.

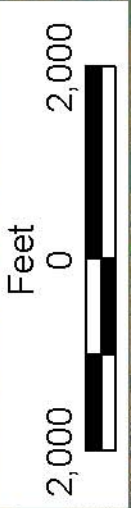
NOTE: The State of Louisiana does hereby reserve, and this lease shall be subject to, the imprescriptible right of surface use in the nature of a servitude in favor of the Department of Natural Resources, including its Offices and Commissions, for the sole purpose of implementing, constructing, servicing and maintaining approved coastal zone management and/or restoration projects. Utilization of any and all rights derived under this lease by the mineral lessee, its agents, successors or assigns, shall not interfere with nor hinder the reasonable surface use by the Department of Natural Resources, its Offices or Commissions, as herein above reserved.

NOTE: The Department of Wildlife and Fisheries has designated certain areas in the coastal waters of the State of Louisiana as Oyster Seed Bed

Areas. The exact location of those Seed Bed Areas must be obtained from the Department of Wildlife and Fisheries and any work done under a mineral lease from the State of Louisiana may necessarily be conducted in conformity with the rules and regulations promulgated by the said Department of Wildlife and Fisheries for Oyster Seed Bed Areas.

Applicant: IRBYLLE RESOURCES

Bidder	Cash Payment	Price/Acre	Rental	Oil	Gas	Other



SL 1217

EAST FORK
BAYOU L'OURS

LAFOURCHE PARISH

SL 18406

P.O.B.
X=2,386,385.00
Y=277,660.00

T19S - R23E

SL 18442

TRACT 37826 - Lafourche Parish, Louisiana

All of the lands now or formerly constituting the beds and bottoms of all water bodies of every nature and description the title of which vests in the State of Louisiana, together with all islands arising therein and other lands formed by accretion or by reliction, where allowed by law, excepting tax adjudicated lands, and not presently under mineral lease on September 14, 2005, situated in Lafourche Parish, Louisiana, and more particularly described as follows: Beginning at a point having Coordinates of X = 2,386,385.00 and Y = 277,660.00; thence East 7,716.00 feet to a point having Coordinates of X = 2,394,101.00 and Y = 277,660.00; thence South 2,960.00 feet to a point having Coordinates of X = 2,394,101.00 and Y = 274,700.00; thence West 7,716.00 feet to a point having Coordinates of X = 2,386,385.00 and Y = 274,700.00; thence North 2,960.00 feet to the point of beginning, containing approximately **5 acres**, all as more particularly outlined on a plat on file in the Office of Mineral Resources, Department of Natural Resources. All bearings, distances and coordinates are based on Louisiana Coordinate System of 1927, (North or South Zone), where applicable.

NOTE: The above description of the Tract nominated for lease has been provided and corrected, where required, exclusively by the nomination party. Any mineral lease selected from this Tract and awarded by the Louisiana State Mineral Board shall be without warranty of any kind, either express, implied, or statutory, including, but not limited to, the implied warranties of merchantability and fitness for a particular purpose. Should the mineral lease awarded by the Louisiana State Mineral Board be subsequently modified, cancelled or abrogated due to the existence of conflicting leases, operating agreements, private claims or other future obligations or conditions which may affect all or any portion of the leased Tract, it shall not relieve the Lessee of the obligation to pay any bonus due thereon to the Louisiana State Mineral Board, nor shall the Louisiana State Mineral Board be obligated to refund any consideration paid by the Lessor prior to such modification, cancellation, or abrogation, including, but not limited to, bonuses, rentals and royalties.

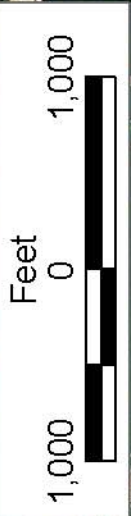
NOTE: The State of Louisiana does hereby reserve, and this lease shall be subject to, the imprescriptible right of surface use in the nature of a servitude in favor of the Department of Natural Resources, including its Offices and Commissions, for the sole purpose of implementing, constructing, servicing and maintaining approved coastal zone management and/or restoration projects. Utilization of any and all rights derived under this lease by the mineral lessee, its agents, successors or assigns, shall not interfere with nor hinder the reasonable surface use by the Department of Natural Resources, its Offices or Commissions, as herein above reserved.

NOTE: The Department of Wildlife and Fisheries has designated certain areas in the coastal waters of the State of Louisiana as Oyster Seed Bed Areas. The exact location of those Seed Bed Areas must be obtained from

the Department of Wildlife and Fisheries and any work done under a mineral lease from the State of Louisiana may necessarily be conducted in conformity with the rules and regulations promulgated by the said Department of Wildlife and Fisheries for Oyster Seed Bed Areas.

Applicant: IRBYLLE RESOURCES

Bidder	Cash Payment	Price/Acre	Rental	Oil	Gas	Other



EAST FORK BAYOU

T19S - R23E

LAFOURCHE PARISH

P.O.B.
X=2,386,385.00
Y=277,660.00



TRACT 37827 - St. Mary and Terrebonne Parishes, Louisiana

All of the lands now or formerly constituting the beds and bottoms of all water bodies of every nature and description the title of which vests in the State of Louisiana, together with all islands arising therein and other lands formed by accretion or by reliction, where allowed by law, excepting tax adjudicated lands, and not presently under mineral lease on September 14, 2005, situated in St. Mary and Terrebonne Parishes, Louisiana, and more particularly described as follows: Beginning at a point on the South line of the Atchafalaya Delta Wildlife Management Area having Coordinates of X = 1,993,420.00 and Y = 241,930.00; thence Southeasterly along the Southern boundary of said Wildlife Management Area to a point having a Coordinate of X = 2,006,528.78; thence South approximately 952 feet to a point on the Northernmost line of State Lease No. 649, as amended, or the Westward extension thereof having a Coordinate of X = 2,006,528.78; thence continue along the Northernmost line of said State Lease No. 649 or the Westward extension thereof to the Northernmost Northwest corner of said State Lease No. 649; thence along the boundary of said State Lease No. 649 as follows: Southerly approximately 4,951 feet and Westerly approximately 3,240 feet to the Westernmost Northwest corner of said State Lease No. 649; thence Westerly approximately 800 feet to a point on the 1975 Decree Shoreline having Coordinates of X = 2,002,489.97 and Y = 226,257.11; thence Northwesterly along said Shoreline on a straight line to a point having Coordinates of X = 2,000,030 and Y = 228,573; thence Northwesterly along said Shoreline on a straight line to a point having Coordinates of X = 1,998,568 and Y = 230,370; thence Northwesterly along said Shoreline on a straight line to a point having Coordinates of X = 1,996,506 and Y = 233,983; thence Northwesterly along said Shoreline on a straight line to a point having Coordinates of X = 1,995,220 and Y = 235,805; thence Northwesterly on a straight line to the point of beginning, **LESS AND EXCEPT** all that portion of said State Lease No. 649 that may lie within the above described tract, containing approximately **255 acres**, all as more particularly outlined on a plat on file in the Office of Mineral Resources, Department of Natural Resources. All bearings, distances and coordinates are based on Louisiana Coordinate System of 1927, (North or South Zone), where applicable.

NOTE: The above description of the Tract nominated for lease has been provided and corrected, where required, exclusively by the nomination party. Any mineral lease selected from this Tract and awarded by the Louisiana State Mineral Board shall be without warranty of any kind, either express, implied, or statutory, including, but not limited to, the implied warranties of merchantability and fitness for a particular purpose. Should the mineral lease awarded by the Louisiana State Mineral Board be subsequently modified, cancelled or abrogated due to the existence of conflicting leases, operating agreements, private claims or other future obligations or conditions which may affect all or any portion of the leased Tract, it shall not relieve the Lessee of the obligation to pay any bonus due thereon to the Louisiana State Mineral Board, nor shall the Louisiana State Mineral Board be obligated to refund any consideration

paid by the Lessor prior to such modification, cancellation, or abrogation, including, but not limited to, bonuses, rentals and royalties.

NOTE: The above described tract may be in the vicinity of existing shell reefs where drilling and dredging operations must be conducted in strict conformity with the regulations adopted by the Louisiana Department of Wildlife and Fisheries and/or the U.S. Corps of Engineers, U.S. Army.

NOTE: The State of Louisiana does hereby reserve, and this lease shall be subject to, the imprescriptible right of surface use in the nature of a servitude in favor of the Department of Natural Resources, including its Offices and Commissions, for the sole purpose of implementing, constructing, servicing and maintaining approved coastal zone management and/or restoration projects. Utilization of any and all rights derived under this lease by the mineral lessee, its agents, successors or assigns, shall not interfere with nor hinder the reasonable surface use by the Department of Natural Resources, its Offices or Commissions, as herein above reserved.

NOTE: The Department of Wildlife and Fisheries has designated certain areas in the coastal waters of the State of Louisiana as Oyster Seed Bed Areas. The exact location of those Seed Bed Areas must be obtained from the Department of Wildlife and Fisheries and any work done under a mineral lease from the State of Louisiana may necessarily be conducted in conformity with the rules and regulations promulgated by the said Department of Wildlife and Fisheries for Oyster Seed Bed Areas.

Applicant: LESLIE M. COOPER

Bidder	Cash Payment	Price/Acre	Rental	Oil	Gas	Other



P.O.B.
X=1,993,420.00
Y=241,930.00

ATCHAFALAYA
DELTA WMA

ST MARY PARISH

SL 649

T20S - R11E

SHIP SHOAL
AREA

BLOCK SS0001

TERREBONNE PARISH

BLOCK E10036

EUGENE ISLAND
AREA, REVISED

ST MARY PARISH

BLOCK E10037

TRACT 37828 - St. Mary and Terrebonne Parishes, Louisiana

All of the lands now or formerly constituting the beds and bottoms of all water bodies of every nature and description the title of which vests in the State of Louisiana, together with all islands arising therein and other lands formed by accretion or by reliction, where allowed by law, excepting tax adjudicated lands, and not presently under mineral lease on September 14, 2005, situated in St. Mary and Terrebonne Parishes, Louisiana, and more particularly described as follows: Beginning at a point having Coordinates of X = 2,015,346.98 and Y = 230,000.00; thence South approximately 3,582 feet to a point on the North line of State Lease No. 649, as amended, having a Coordinate of X = 2,015,346.98; thence along the boundary of said State Lease No. 649 the following: Westerly approximately 2,435 feet, Northerly approximately 3,799 feet, Westerly approximately 2,610 feet and Northerly approximately 1,057 feet to the Northernmost Northeast corner of said State Lease No. 649; thence Westerly approximately 3,773 feet along the Northernmost line of said State Lease No. 649 to a point on said Northernmost line or the Westward extension thereof having a Coordinate of X = 2,006,528.78; thence North approximately 952 feet to a point on the Southern boundary of the Atchafalaya Delta Wildlife Management Area having a Coordinate of X = 2,006,528.78; thence Northeasterly along the Southern boundary of said Wildlife management Area to a point having a Coordinate of X = 2,015,346.98; thence South approximately 8,432 feet to the point of beginning, **LESS AND EXCEPT** all that portion of said State Lease No. 649, if any, that may lie within the above described tract, containing approximately **15 acres**, all as more particularly outlined on a plat on file in the Office of Mineral Resources, Department of Natural Resources. All bearings, distances and coordinates are based on Louisiana Coordinate System of 1927, (North or South Zone), where applicable.

NOTE: The above description of the Tract nominated for lease has been provided and corrected, where required, exclusively by the nomination party. Any mineral lease selected from this Tract and awarded by the Louisiana State Mineral Board shall be without warranty of any kind, either express, implied, or statutory, including, but not limited to, the implied warranties of merchantability and fitness for a particular purpose. Should the mineral lease awarded by the Louisiana State Mineral Board be subsequently modified, cancelled or abrogated due to the existence of conflicting leases, operating agreements, private claims or other future obligations or conditions which may affect all or any portion of the leased Tract, it shall not relieve the Lessee of the obligation to pay any bonus due thereon to the Louisiana State Mineral Board, nor shall the Louisiana State Mineral Board be obligated to refund any consideration paid by the Lessor prior to such modification, cancellation, or abrogation, including, but not limited to, bonuses, rentals and royalties.

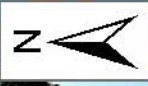
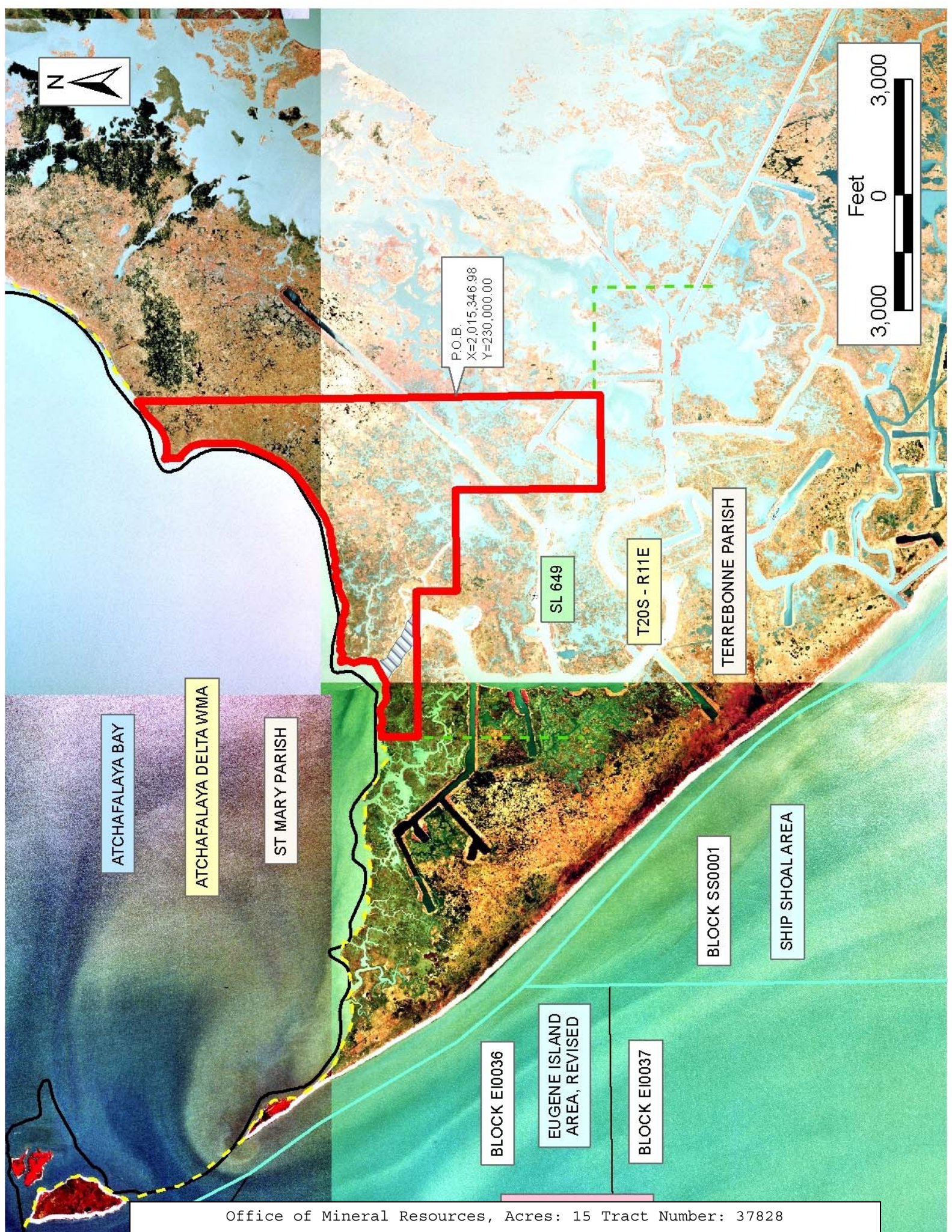
NOTE: The State of Louisiana does hereby reserve, and this lease shall be subject to, the imprescriptible right of surface use in the nature of a servitude in favor of the Department of Natural Resources, including its

Offices and Commissions, for the sole purpose of implementing, constructing, servicing and maintaining approved coastal zone management and/or restoration projects. Utilization of any and all rights derived under this lease by the mineral lessee, its agents, successors or assigns, shall not interfere with nor hinder the reasonable surface use by the Department of Natural Resources, its Offices or Commissions, as herein above reserved.

NOTE: The Department of Wildlife and Fisheries has designated certain areas in the coastal waters of the State of Louisiana as Oyster Seed Bed Areas. The exact location of those Seed Bed Areas must be obtained from the Department of Wildlife and Fisheries and any work done under a mineral lease from the State of Louisiana may necessarily be conducted in conformity with the rules and regulations promulgated by the said Department of Wildlife and Fisheries for Oyster Seed Bed Areas.

Applicant: LESLIE M. COOPER

Bidder	Cash Payment	Price/Acre	Rental	Oil	Gas	Other



P.O.B.
X=-2,015,346.98
Y=230,000.00



ATCHAFALAYA BAY

ATCHAFALAYA DELTA WMA

ST MARY PARISH

SL 649

T20S - R11E

TERREBONNE PARISH

BLOCK E10036

EUGENE ISLAND AREA, REVISED

BLOCK E10037

BLOCK SS0001

SHIP SHOAL AREA

TRACT 37829 - Terrebonne Parish, Louisiana

All of the lands now or formerly constituting the beds and bottoms of all water bodies of every nature and description the title of which vests in the State of Louisiana, together with all islands arising therein and other lands formed by accretion or by reliction, where allowed by law, excepting tax adjudicated lands, and not presently under mineral lease on September 14, 2005, situated in Terrebonne Parish, Louisiana, and more particularly described as follows: Beginning at a point on the 1975 Decree Shoreline having Coordinates of X = 2,002,489.97 and Y = 226,257.11; thence East approximately 800 feet to a point on the present day shoreline; thence Southeasterly approximately 18,400 feet along the present day shoreline to its intersection with the Eastern boundary of State Lease No. 649, as amended; thence continue along the boundary of said State Lease No. 649 the following courses: Northerly approximately 10,430 feet to a point, Easterly approximately 2,740 feet to a point and Northerly approximately 3,136 feet to a point on the Easternmost boundary of said State Lease No. 649 or the Northward extension thereof having a Coordinate of Y = 226,425.61; thence East approximately 2,596 feet to a point having Coordinates of X = 2,020,811.63 and Y = 226,425.61; thence South 14,468.93 feet to a point having Coordinates of X = 2,020,811.63 and Y = 211,956.68; thence West 5,222.61 feet to a point on the aforesaid Decree Shoreline having Coordinates of X = 2,015,589.02 and Y = 211,956.68; thence Northwesterly along said Decree Shoreline on a straight line to a point having Coordinates of X = 2,014,384 and Y = 213,268; thence Northwesterly along said Decree Shoreline on a straight line to a point having Coordinates of X = 2,010,960 and Y = 216,566; thence Northwesterly along said Decree Shoreline on a straight line to a point having Coordinates of X = 2,008,873 and Y = 218,388; thence Northwesterly along said Decree Shoreline on a straight line to a point having Coordinates of X = 2,008,058 and Y = 219,434; thence Northwesterly along said Decree Shoreline on a straight line to a point having Coordinates of X = 2,006,991 and Y = 221,401; thence Northwesterly along said Decree Shoreline on a straight line to a point having Coordinates of X = 2,006,256 and Y = 222,432; thence Northwesterly along said Decree Shoreline on a straight line to a point having Coordinates of X = 2,004,384 and Y = 224,474; thence Northwesterly along said Decree Shoreline on a straight line to the point of beginning, **LESS AND EXCEPT** all that portion of said State Lease No. 649, if any, that may lie within the above described tract, containing approximately **326 acres**, all as more particularly outlined on a plat on file in the Office of Mineral Resources, Department of Natural Resources. All bearings, distances and coordinates are based on Louisiana Coordinate System of 1927, (North or South Zone), where applicable.

NOTE: The above description of the Tract nominated for lease has been provided and corrected, where required, exclusively by the nomination party. Any mineral lease selected from this Tract and awarded by the Louisiana State Mineral Board shall be without warranty of any kind, either express, implied, or statutory, including, but not limited to, the

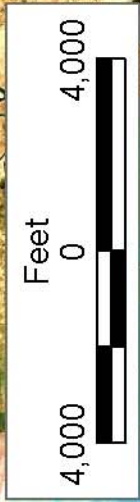
implied warranties of merchantability and fitness for a particular purpose. Should the mineral lease awarded by the Louisiana State Mineral Board be subsequently modified, cancelled or abrogated due to the existence of conflicting leases, operating agreements, private claims or other future obligations or conditions which may affect all or any portion of the leased Tract, it shall not relieve the Lessee of the obligation to pay any bonus due thereon to the Louisiana State Mineral Board, nor shall the Louisiana State Mineral Board be obligated to refund any consideration paid by the Lessor prior to such modification, cancellation, or abrogation, including, but not limited to, bonuses, rentals and royalties.

NOTE: The State of Louisiana does hereby reserve, and this lease shall be subject to, the imprescriptible right of surface use in the nature of a servitude in favor of the Department of Natural Resources, including its Offices and Commissions, for the sole purpose of implementing, constructing, servicing and maintaining approved coastal zone management and/or restoration projects. Utilization of any and all rights derived under this lease by the mineral lessee, its agents, successors or assigns, shall not interfere with nor hinder the reasonable surface use by the Department of Natural Resources, its Offices or Commissions, as herein above reserved.

NOTE: The Department of Wildlife and Fisheries has designated certain areas in the coastal waters of the State of Louisiana as Oyster Seed Bed Areas. The exact location of those Seed Bed Areas must be obtained from the Department of Wildlife and Fisheries and any work done under a mineral lease from the State of Louisiana may necessarily be conducted in conformity with the rules and regulations promulgated by the said Department of Wildlife and Fisheries for Oyster Seed Bed Areas.

Applicant: LESLIE M. COOPER

Bidder	Cash Payment	Price/Acre	Rental	Oil	Gas	Other



TERREBONNE PARISH

ST MARY PARISH

T20S - R11E

T20S - R12E

T21S - R12E

T21S - R11E

LOCUST BAYOU

SL 649

BLOCK SS0003

BLOCK SS0002

BLOCK SS0001

SHIP SHOAL AREA

P.O.B.
X = 2,002,489.97
Y = 226,257.11

TRACT 37830 - Portion of Block 7, Grand Isle Area, Jefferson and Plaquemines Parishes, Louisiana

All of the lands now or formerly constituting the beds and bottoms of all water bodies of every nature and description the title of which vests in the State of Louisiana, together with all islands arising therein and other lands formed by accretion or by reliction, where allowed by law, excepting tax adjudicated lands, and not presently under mineral lease on September 14, 2005, situated in Jefferson and Plaquemines Parishes, Louisiana, and more particularly described as follows: Beginning at the Southeast corner of Block 7, Grand Isle Area, having Coordinates of X = 2,457,659.89 and Y = 200,293.43; thence West 14,758.04 feet along the Southern boundary of said Block 7 to its Southwest corner having Coordinates of X = 2,442,901.85 and Y = 200,293.43; thence North 7,379.02 feet along the West boundary of said Block 7 to a point having Coordinates of X = 2,442,901.85 and Y = 207,672.45; thence East 14,758.04 feet to a point on the East boundary of said Block 7 having Coordinates of X = 2,457,659.89 and Y = 207,672.45; thence South 7,379.02 feet along the East boundary of said Block 7 to the point of beginning, containing approximately **2,500 acres**, all as more particularly outlined on a plat on file in the Office of Mineral Resources, Department of Natural Resources. All bearings, distances and coordinates are based on Louisiana Coordinate System of 1927, (North or South Zone), where applicable.

NOTE: The above description of the Tract nominated for lease has been provided and corrected, where required, exclusively by the nomination party. Any mineral lease selected from this Tract and awarded by the Louisiana State Mineral Board shall be without warranty of any kind, either express, implied, or statutory, including, but not limited to, the implied warranties of merchantability and fitness for a particular purpose. Should the mineral lease awarded by the Louisiana State Mineral Board be subsequently modified, cancelled or abrogated due to the existence of conflicting leases, operating agreements, private claims or other future obligations or conditions which may affect all or any portion of the leased Tract, it shall not relieve the Lessee of the obligation to pay any bonus due thereon to the Louisiana State Mineral Board, nor shall the Louisiana State Mineral Board be obligated to refund any consideration paid by the Lessor prior to such modification, cancellation, or abrogation, including, but not limited to, bonuses, rentals and royalties.

NOTE: The State of Louisiana does hereby reserve, and this lease shall be subject to, the imprescriptible right of surface use in the nature of a servitude in favor of the Department of Natural Resources, including its Offices and Commissions, for the sole purpose of implementing, constructing, servicing and maintaining approved coastal zone management and/or restoration projects. Utilization of any and all rights derived under this lease by the mineral lessee, its agents, successors or assigns, shall not interfere with nor hinder the reasonable surface use by the Department of Natural Resources, its Offices or Commissions, as herein above reserved.

NOTE: It appears, according to our records, that a portion of this Tract is located within the restrictive safety fairway area as set out by the Corps of Engineers, U.S. Army and/or the restrictive anchorage area as set out by the U.S. Coast Guard.

Applicant: S. R. VERRET

Bidder	Cash Payment	Price/Acre	Rental	Oil	Gas	Other



PLAQUEMINES
PARISH

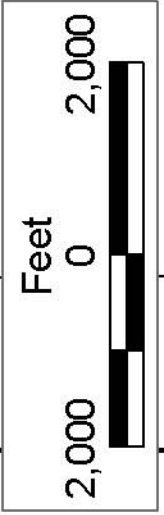
JEFFERSON PARISH

GRAND ISLE AREA

BLOCK GI0007

BLOCK GI0010

P.O.B.
X=2,457,659.89
Y=200,293.43



TRACT 37831 - Portion of Block 8, Grand Isle Area, Plaquemines Parish, Louisiana

All of the lands now or formerly constituting the beds and bottoms of all water bodies of every nature and description the title of which vests in the State of Louisiana, together with all islands arising therein and other lands formed by accretion or by reliction, where allowed by law, excepting tax adjudicated lands, and not presently under mineral lease on September 14, 2005, situated in Plaquemines Parish, Louisiana, and more particularly described as follows: Beginning at a point on the East boundary of Block 8, Grand Isle Area, having Coordinates of X = 2,472,417.93 and Y = 207,672.45; thence South 5,873.73 feet along the East boundary of said Block 8 to its intersection with the Coastline as defined and set forth in June 1975 by the U.S. Supreme Court, said point having Coordinates of X = 2,472,417.93 and Y = 201,798.72; thence Southwesterly on a straight line to a point on South boundary of said Block 8 to a point having Coordinates of X = 2,464,242.83 and Y = 200,293.43; thence West 6,582.94 feet along the South boundary of said Block 8 to its Southwest corner having Coordinates of X = 2,457,659.89 and Y = 200,293.43; thence North 7,379.02 feet along the West boundary of said Block 8 to a point having Coordinates of X = 2,457,659.89 and Y = 207,672.45; thence East 14,758.04 feet to the point of beginning, containing approximately **2,358.74 acres**, all as more particularly outlined on a plat on file in the Office of Mineral Resources, Department of Natural Resources. All bearings, distances and coordinates are based on Louisiana Coordinate System of 1927, (North or South Zone), where applicable.

NOTE: The above description of the Tract nominated for lease has been provided and corrected, where required, exclusively by the nomination party. Any mineral lease selected from this Tract and awarded by the Louisiana State Mineral Board shall be without warranty of any kind, either express, implied, or statutory, including, but not limited to, the implied warranties of merchantability and fitness for a particular purpose. Should the mineral lease awarded by the Louisiana State Mineral Board be subsequently modified, cancelled or abrogated due to the existence of conflicting leases, operating agreements, private claims or other future obligations or conditions which may affect all or any portion of the leased Tract, it shall not relieve the Lessee of the obligation to pay any bonus due thereon to the Louisiana State Mineral Board, nor shall the Louisiana State Mineral Board be obligated to refund any consideration paid by the Lessor prior to such modification, cancellation, or abrogation, including, but not limited to, bonuses, rentals and royalties.

NOTE: The State of Louisiana does hereby reserve, and this lease shall be subject to, the imprescriptible right of surface use in the nature of a servitude in favor of the Department of Natural Resources, including its Offices and Commissions, for the sole purpose of implementing, constructing, servicing and maintaining approved coastal zone management and/or restoration projects. Utilization of any and all rights derived under this lease by the mineral lessee, its agents, successors or assigns,

shall not interfere with nor hinder the reasonable surface use by the Department of Natural Resources, its Offices or Commissions, as herein above reserved.

NOTE: It appears, according to our records, that a portion of this Tract is located within the restrictive safety fairway area as set out by the Corps of Engineers, U.S. Army and/or the restrictive anchorage area as set out by the U.S. Coast Guard.

Applicant: S. R. VERRET

Bidder	Cash Payment	Price/Acre	Rental	Oil	Gas	Other



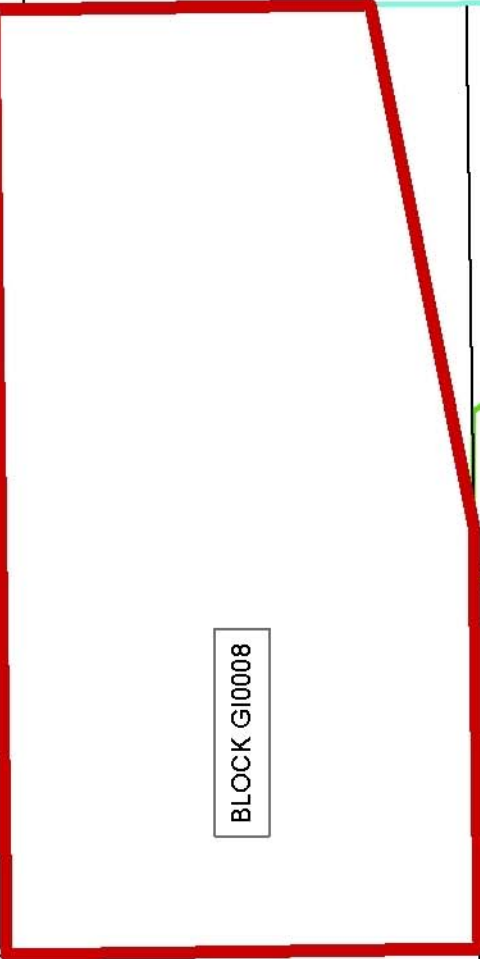
WEST
DELTA
AREA

GRAND
ISLE AREA

PLAQUEMINES
PARISH

JEFFERSON
PARISH

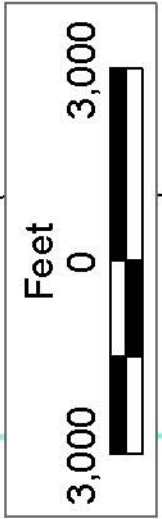
P.O.B.
X=2,472,417.93
Y=207,672.45



BLOCK GI0008

SL 797

BLOCK GI0009



TRACT 37832 - Portion of Block 11, Grand Isle Area, Jefferson Parish, Louisiana

All of the lands now or formerly constituting the beds and bottoms of all water bodies of every nature and description the title of which vests in the State of Louisiana, together with all islands arising therein and other lands formed by accretion or by reliction, where allowed by law, excepting tax adjudicated lands, and not presently under mineral lease on September 14, 2005, situated in Jefferson Parish, Louisiana, and more particularly described as follows: Beginning at the Northeast corner of Block 11, Grand Isle Area having Coordinates of X = 2,442,901.85 and Y = 200,293.43; thence South 3,929.54 feet along the East boundary of said Block 11 to its intersection with the Coastline as defined and set forth in June 1975 by the U.S. Supreme Court, said point having Coordinates of X = 2,442,901.85 and Y = 196,363.89; thence Southwesterly on a straight line to a point having Coordinates of X = 2,435,522.83 and Y = 195,005.18; thence North 5,288.25 feet to a point on the North boundary of said Block 11 having Coordinates of X = 2,435,522.83 and Y = 200,293.43; thence East 7,379.02 feet along the North boundary of said Block 11 to the point of beginning, containing approximately **780.74 acres**, all as more particularly outlined on a plat on file in the Office of Mineral Resources, Department of Natural Resources. All bearings, distances and coordinates are based on Louisiana Coordinate System of 1927, (North or South Zone), where applicable.

NOTE: The above description of the Tract nominated for lease has been provided and corrected, where required, exclusively by the nomination party. Any mineral lease selected from this Tract and awarded by the Louisiana State Mineral Board shall be without warranty of any kind, either express, implied, or statutory, including, but not limited to, the implied warranties of merchantability and fitness for a particular purpose. Should the mineral lease awarded by the Louisiana State Mineral Board be subsequently modified, cancelled or abrogated due to the existence of conflicting leases, operating agreements, private claims or other future obligations or conditions which may affect all or any portion of the leased Tract, it shall not relieve the Lessee of the obligation to pay any bonus due thereon to the Louisiana State Mineral Board, nor shall the Louisiana State Mineral Board be obligated to refund any consideration paid by the Lessor prior to such modification, cancellation, or abrogation, including, but not limited to, bonuses, rentals and royalties.

NOTE: The State of Louisiana does hereby reserve, and this lease shall be subject to, the imprescriptible right of surface use in the nature of a servitude in favor of the Department of Natural Resources, including its Offices and Commissions, for the sole purpose of implementing, constructing, servicing and maintaining approved coastal zone management and/or restoration projects. Utilization of any and all rights derived under this lease by the mineral lessee, its agents, successors or assigns, shall not interfere with nor hinder the reasonable surface use by the

Department of Natural Resources, its Offices or Commissions, as herein above reserved.

Applicant: S. R. VERRET

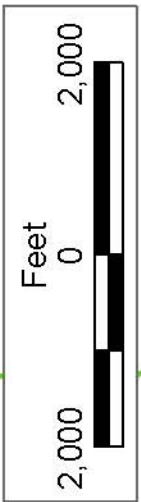
Bidder	Cash Payment	Price/Acre	Rental	Oil	Gas	Other



BLOCK GI0007

P.O.B.
X = 2,442,901.85
Y = 200,293.43

BLOCK GI0010



JEFFERSON PARISH

GRAND ISLE AREA

BLOCK GI0006

BLOCK GI0011

SL 14602