

TRACT 37758 - Portion of Block 36, Eugene Island Area, Revised, St. Mary and Terrebonne Parishes, Louisiana

The beds and bottoms of all water bodies belonging to the State of Louisiana located in Block 36, Eugene Island Area, Revised, together with any present lands formed by accretion to the shoreline or islands formed therein, located in St. Mary and Terrebonne Parishes, Louisiana, owned by and not presently under mineral lease as of September 14, 2005, from the State of Louisiana, the geographical area of which is more fully described as follows: Beginning at a point in Block 36, Eugene Island Area, Revised, having Coordinates of X = 1,989,930.05 and Y = 243,148.75, being also a point on the South line of the Atchafalaya Delta Wildlife Management Area; thence Southeasterly along the South boundary of said Wildlife Management Area on a straight line to a point having Coordinates of X = 1,993,420.00 and Y = 241,930.00; thence Southeasterly on a straight line to a point on the 1975 Decree Shoreline having Coordinates of X = 1,995,220 and Y = 235,805; thence Southeasterly along said Shoreline on a straight line to a point having Coordinates of X = 1,996,506 and Y = 233,983; thence Southeasterly along said Shoreline on a straight line to a point having Coordinates of X = 1,998,568.00 and Y = 230,370.00; thence South 3,973.16 feet to a point on the South line of said Block 36 having Coordinates of X = 1,998,568.00 and Y = 226,396.84; thence West 8,637.95 feet along the South line of Block 36 to a point having Coordinates of X = 1,989,930.05 and Y = 226,396.84; thence North 16,751.91 feet to the point of beginning, containing approximately **2,333.08 acres**, all as more particularly outlined on a plat on file in the Office of Mineral Resources, Department of Natural Resources. All bearings, distances and coordinates are based on Louisiana Coordinate System of 1927, (North or South Zone).

NOTE: The above description of the Tract nominated for lease has been provided and corrected, where required, exclusively by the nomination party. Any mineral lease selected from this Tract and awarded by the Louisiana State Mineral Board shall be without warranty of any kind, either express, implied, or statutory, including, but not limited to, the implied warranties of merchantability and fitness for a particular purpose. Should the mineral lease awarded by the Louisiana State Mineral Board be subsequently modified, cancelled or abrogated due to the existence of conflicting leases, operating agreements, private claims or other future obligations or conditions which may affect all or any portion of the leased Tract, it shall not relieve the Lessee of the obligation to pay any bonus due thereon to the Louisiana State Mineral Board, nor shall the Louisiana State Mineral Board be obligated to refund any consideration paid by the Lessor prior to such modification, cancellation, or abrogation, including, but not limited to, bonuses, rentals and royalties.

NOTE: The above described tract may be in the vicinity of existing shell reefs where drilling and dredging operations must be conducted in strict conformity with the regulations adopted by the Louisiana Department of Wildlife and Fisheries and/or the U.S. Corps of Engineers, U.S. Army.

NOTE: The State of Louisiana does hereby reserve, and this lease shall be subject to, the imprescriptible right of surface use in the nature of a servitude in favor of the Department of Natural Resources, including its Offices and Commissions, for the sole purpose of implementing, constructing, servicing and maintaining approved coastal zone management and/or restoration projects. Utilization of any and all rights derived under this lease by the mineral lessee, its agents, successors or assigns, shall not interfere with nor hinder the reasonable surface use by the Department of Natural Resources, its Offices or Commissions, as herein above reserved.

NOTE: The Department of Wildlife and Fisheries has designated certain areas in the coastal waters of the State of Louisiana as Oyster Seed Bed Areas. The exact location of those Seed Bed Areas must be obtained from the Department of Wildlife and Fisheries and any work done under a mineral lease from the State of Louisiana may necessarily be conducted in conformity with the rules and regulations promulgated by the said Department of Wildlife and Fisheries for Oyster Seed Bed Areas.

Applicant: LESLIE M. COOPER

Bidder	Cash Payment	Price/Acre	Rental	Oil	Gas	Other



ATCHAFALAYA BAY

ATCHAFALAYA DELTA WMA

SL 649

TERREBONNE PARISH

SHIP SHOAL AREA



P.O.B.
X=1,989,930.05
Y=243,148.75

BLOCK E10036

BLOCK E10037

ST MARY PARISH

EUGENE ISLAND AREA, REVISED

TRACT 37759 - Portion of Blocks 36, and 37, Eugene Island Area, Revised, and Block 1, Ship Shoal Area, Terrebonne Parish, Louisiana

The beds and bottoms of all water bodies belonging to the State of Louisiana located in Blocks 36, and 37, Eugene Island Area, Revised, and Block 1, Ship Shoal Area, together with any present lands formed by accretion to the shoreline or islands formed therein, located in Terrebonne Parish, Louisiana, owned by and not presently under mineral lease as of September 14, 2005, from the State of Louisiana, the geographical area of which is more fully described as follows: Beginning at a point in Block 37, Eugene Island Area, Revised, having Coordinates of X = 1,993,530.05 and Y = 221,116.84; thence North 5,280.00 feet to a point on the North line of said Block 37 and the South line of Block 36, Eugene Island Area having Coordinates of X = 1,993,530.05 and Y = 226,396.84; thence East 5,037.95 feet along the North line of said Block 37 and the South line of said Block 36 to a point having Coordinates of X = 1,998,568.00 and Y = 226,396.84; thence North 3,973.16 feet to a point on the 1975 Decree Shoreline having Coordinates of X = 1,998,568 and Y = 230,370; thence Southeasterly along said Shoreline on a straight line to a point having Coordinates of X = 2,000,030 and Y = 228,573; thence Southeasterly along said Shoreline on a straight line to a point having Coordinates of X = 2,004,384 and Y = 224,474; thence Southeasterly along said Shoreline on a straight line to a point having Coordinates of X = 2,006,256 and Y = 222,432; thence Southeasterly along said Shoreline on a straight line to a point having Coordinates of X = 2,006,991 and Y = 221,401; thence Southeasterly along said Shoreline on a straight line to a point having Coordinates of X = 2,008,058 and Y = 219,434; thence Southeasterly along said Shoreline on a straight line to a point having Coordinates of X = 2,008,873 and Y = 218,388; thence Southeasterly along said Shoreline on a straight line to a point having Coordinates of X = 2,010,609.68 and Y = 216,871.84; thence West 11,799.63 feet to a point in said Block 37 having Coordinates of X = 1,998,810.05 and Y = 216,871.84; thence North 4,245.00 feet to a point having Coordinates of X = 1,998,810.05 and Y = 221,116.84; thence West 5,280.00 feet to the point of beginning, **LESS AND EXCEPT** any portion of State Lease No. 649, as amended, that may lie within the above described tract, containing approximately **2,497.85 acres**, all as more particularly outlined on a plat on file in the Office of Mineral Resources, Department of Natural Resources. All bearings, distances and coordinates are based on Louisiana Coordinate System of 1927, (North or South Zone).

NOTE: The above description of the Tract nominated for lease has been provided and corrected, where required, exclusively by the nomination party. Any mineral lease selected from this Tract and awarded by the Louisiana State Mineral Board shall be without warranty of any kind, either express, implied, or statutory, including, but not limited to, the implied warranties of merchantability and fitness for a particular purpose. Should the mineral lease awarded by the Louisiana State Mineral Board be subsequently modified, cancelled or abrogated due to the existence of conflicting leases, operating agreements, private claims or

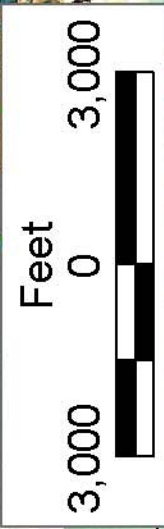
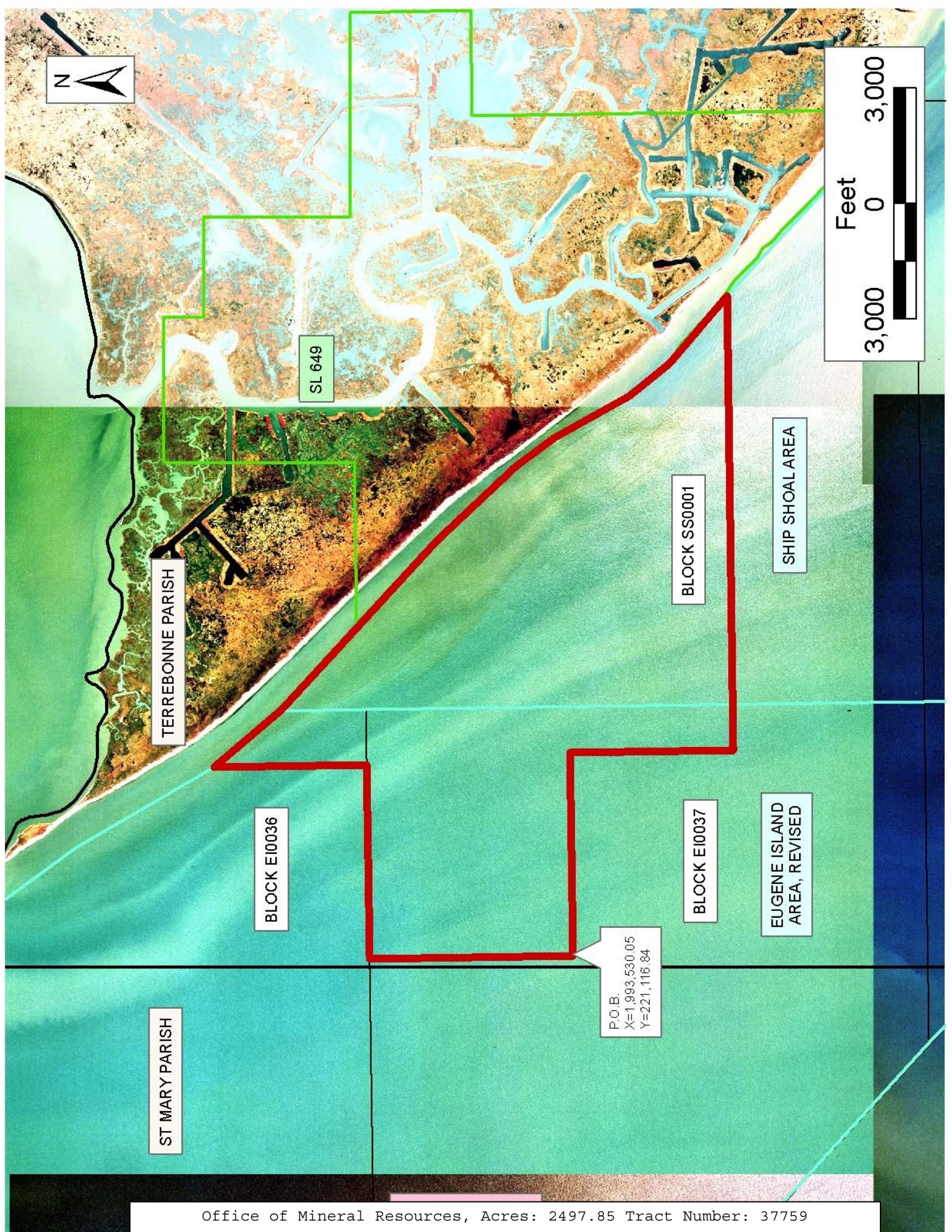
other future obligations or conditions which may affect all or any portion of the leased Tract, it shall not relieve the Lessee of the obligation to pay any bonus due thereon to the Louisiana State Mineral Board, nor shall the Louisiana State Mineral Board be obligated to refund any consideration paid by the Lessor prior to such modification, cancellation, or abrogation, including, but not limited to, bonuses, rentals and royalties.

NOTE: The State of Louisiana does hereby reserve, and this lease shall be subject to, the imprescriptible right of surface use in the nature of a servitude in favor of the Department of Natural Resources, including its Offices and Commissions, for the sole purpose of implementing, constructing, servicing and maintaining approved coastal zone management and/or restoration projects. Utilization of any and all rights derived under this lease by the mineral lessee, its agents, successors or assigns, shall not interfere with nor hinder the reasonable surface use by the Department of Natural Resources, its Offices or Commissions, as herein above reserved.

NOTE: The Department of Wildlife and Fisheries has designated certain areas in the coastal waters of the State of Louisiana as Oyster Seed Bed Areas. The exact location of those Seed Bed Areas must be obtained from the Department of Wildlife and Fisheries and any work done under a mineral lease from the State of Louisiana may necessarily be conducted in conformity with the rules and regulations promulgated by the said Department of Wildlife and Fisheries for Oyster Seed Bed Areas.

Applicant: LESLIE M. COOPER

Bidder	Cash Payment	Price/Acre	Rental	Oil	Gas	Other



TERREBONNE PARISH

ST MARY PARISH

BLOCK E10036

BLOCK SS0001

BLOCK E10037

SHIP SHOAL AREA

EUGENE ISLAND AREA, REVISED

SL 649

P.O. B.
X=1,993,530.05
Y=221,116.84

TRACT 37760 - Portion of Blocks 37, and 58, Eugene Island Area, Revised, Terrebonne Parish, Louisiana

The beds and bottoms of all water bodies belonging to the State of Louisiana located in Blocks 37, and 58, Eugene Island Area, Revised, together with any present lands formed by accretion to the shoreline or islands formed therein, located in Terrebonne Parish, Louisiana, owned by and not presently under mineral lease as of September 14, 2005, from the State of Louisiana, the geographical area of which is more fully described as follows: Beginning at a point in Block 58, Eugene Island Area, Revised, having Coordinates of X = 1,993,530.05 and Y = 210,216.84; thence North 10,900.00 feet to a point in Block 37, Eugene Island Area having Coordinates of X = 1,993,530.05 and Y = 221,116.84; thence East 5,280.00 feet to a point having Coordinates of X = 1,998,810.05 and Y = 221,116.84; thence South 4,245.00 feet to a point having Coordinates of X = 1,998,810.05 and Y = 216,871.84; thence East 1,189.95 feet to a point on the East line of said Block 37 having Coordinates of X = 2,000,000.00 and Y = 216,871.84; thence South 6,655.00 feet along the East line of said Block 37 and said Block 58 to a point on the East line of said Block 58 having Coordinates of X = 200,000.00 and Y = 210,216.84; thence West 6,469.95 feet to the point of beginning, containing approximately **1,503.01 acres**, all as more particularly outlined on a plat on file in the Office of Mineral Resources, Department of Natural Resources. All bearings, distances and coordinates are based on Louisiana Coordinate System of 1927, (North or South Zone).

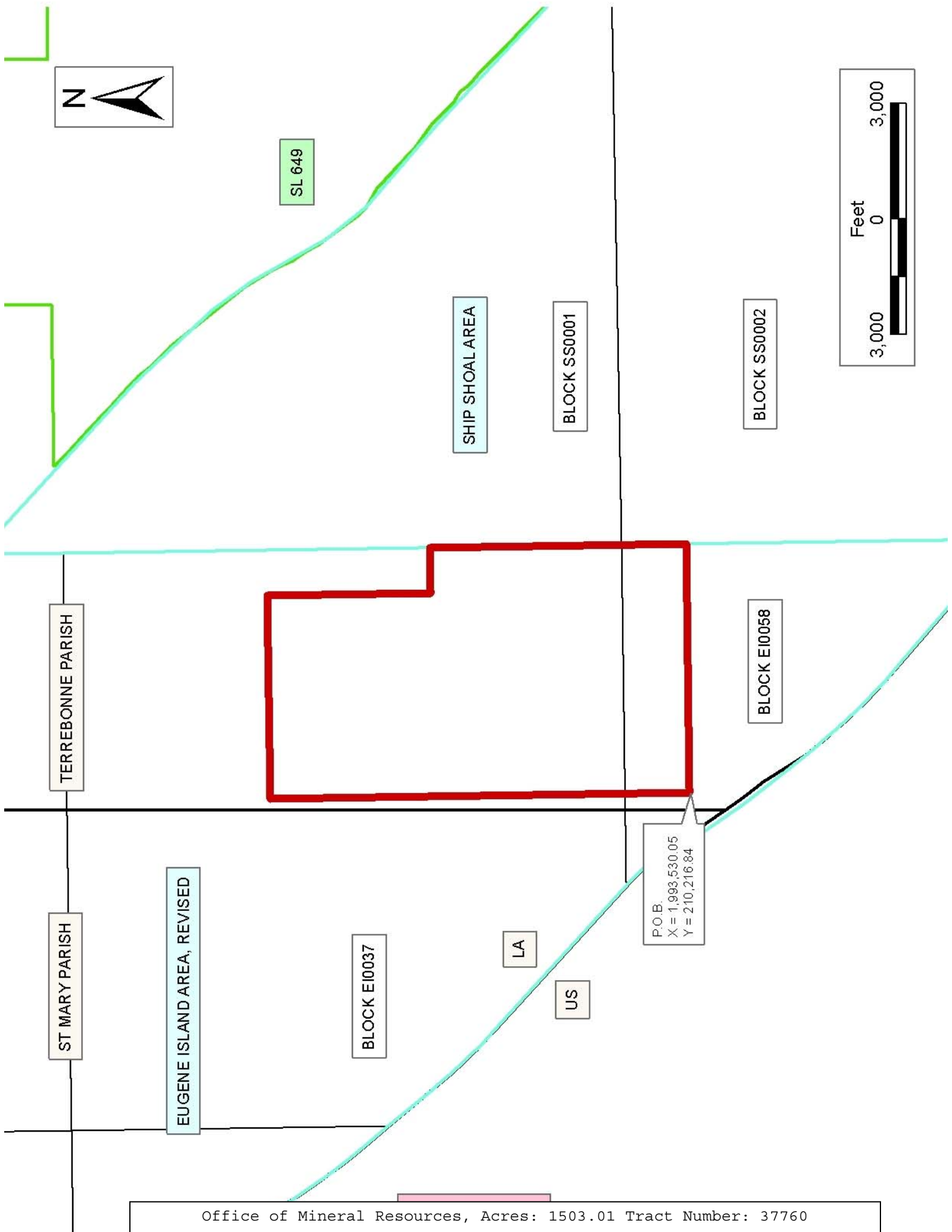
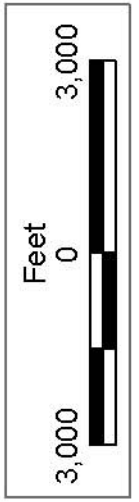
NOTE: The above description of the Tract nominated for lease has been provided and corrected, where required, exclusively by the nomination party. Any mineral lease selected from this Tract and awarded by the Louisiana State Mineral Board shall be without warranty of any kind, either express, implied, or statutory, including, but not limited to, the implied warranties of merchantability and fitness for a particular purpose. Should the mineral lease awarded by the Louisiana State Mineral Board be subsequently modified, cancelled or abrogated due to the existence of conflicting leases, operating agreements, private claims or other future obligations or conditions which may affect all or any portion of the leased Tract, it shall not relieve the Lessee of the obligation to pay any bonus due thereon to the Louisiana State Mineral Board, nor shall the Louisiana State Mineral Board be obligated to refund any consideration paid by the Lessor prior to such modification, cancellation, or abrogation, including, but not limited to, bonuses, rentals and royalties.

NOTE: The State of Louisiana does hereby reserve, and this lease shall be subject to, the imprescriptible right of surface use in the nature of a servitude in favor of the Department of Natural Resources, including its Offices and Commissions, for the sole purpose of implementing, constructing, servicing and maintaining approved coastal zone management and/or restoration projects. Utilization of any and all rights derived under this lease by the mineral lessee, its agents, successors or assigns, shall not interfere with nor hinder the reasonable surface use by the

Department of Natural Resources, its Offices or Commissions, as herein above reserved.

Applicant: LESLIE M. COOPER

Bidder	Cash Payment	Price/Acre	Rental	Oil	Gas	Other



SL 649

SHIP SHOAL AREA

BLOCK SS0001

BLOCK SS0002

TERREBONNE PARISH

BLOCK E10058

ST MARY PARISH

EUGENE ISLAND AREA, REVISED

BLOCK E10037

LA

US

P.O.B.
X = 1,993,530.05
Y = 210,216.84

TRACT 37761 - Portion of Blocks 1, and 2, Ship Shoal Area, Terrebonne Parish, Louisiana

The beds and bottoms of all water bodies belonging to the State of Louisiana located in Blocks 1, and 2, Ship Shoal Area, together with any present lands formed by accretion to the shoreline or islands formed therein, located in Terrebonne Parish, Louisiana, owned by and not presently under mineral lease as of September 14, 2005, from the State of Louisiana, the geographical area of which is more fully described as follows: Beginning at a point on the West line of Block 2, Ship Shoal Area having Coordinates of X = 2,000,000.00 and Y = 210,216.84; thence North 6,655.00 feet on the West line of said Block 2 and the West line of Block 1 to a point on having Coordinates of X = 2,000,000.00 and Y = 216,871.84; thence East 10,609.68 feet to a point on the 1975 Decree Shoreline having Coordinates of X = 2,010,609.68 Y = 216,871.84; thence Southeasterly on a straight line to a point having Coordinates of X = 2,010,960 and Y = 216,566 thence Southeasterly on a straight line to a point having Coordinates of X = 2,014,384 and Y = 213,268; thence Southeasterly on a straight line to a point having Coordinates of X = 2,015,600.00 and Y = 211,944.73; thence South 1,727.89 feet to a point on the East line of said Block 2 having Coordinates of X = 2,015,600.00 and Y = 210,216.84; thence West 15,600.00 feet to the point of beginning, **LESS AND EXCEPT** any portion of State Lease No. 649, as amended, that may lie within the above described tract, containing approximately **2,109.37 acres**, all as more particularly outlined on a plat on file in the Office of Mineral Resources, Department of Natural Resources. All bearings, distances and coordinates are based on Louisiana Coordinate System of 1927, (North or South Zone).

NOTE: The above description of the Tract nominated for lease has been provided and corrected, where required, exclusively by the nomination party. Any mineral lease selected from this Tract and awarded by the Louisiana State Mineral Board shall be without warranty of any kind, either express, implied, or statutory, including, but not limited to, the implied warranties of merchantability and fitness for a particular purpose. Should the mineral lease awarded by the Louisiana State Mineral Board be subsequently modified, cancelled or abrogated due to the existence of conflicting leases, operating agreements, private claims or other future obligations or conditions which may affect all or any portion of the leased Tract, it shall not relieve the Lessee of the obligation to pay any bonus due thereon to the Louisiana State Mineral Board, nor shall the Louisiana State Mineral Board be obligated to refund any consideration paid by the Lessor prior to such modification, cancellation, or abrogation, including, but not limited to, bonuses, rentals and royalties.

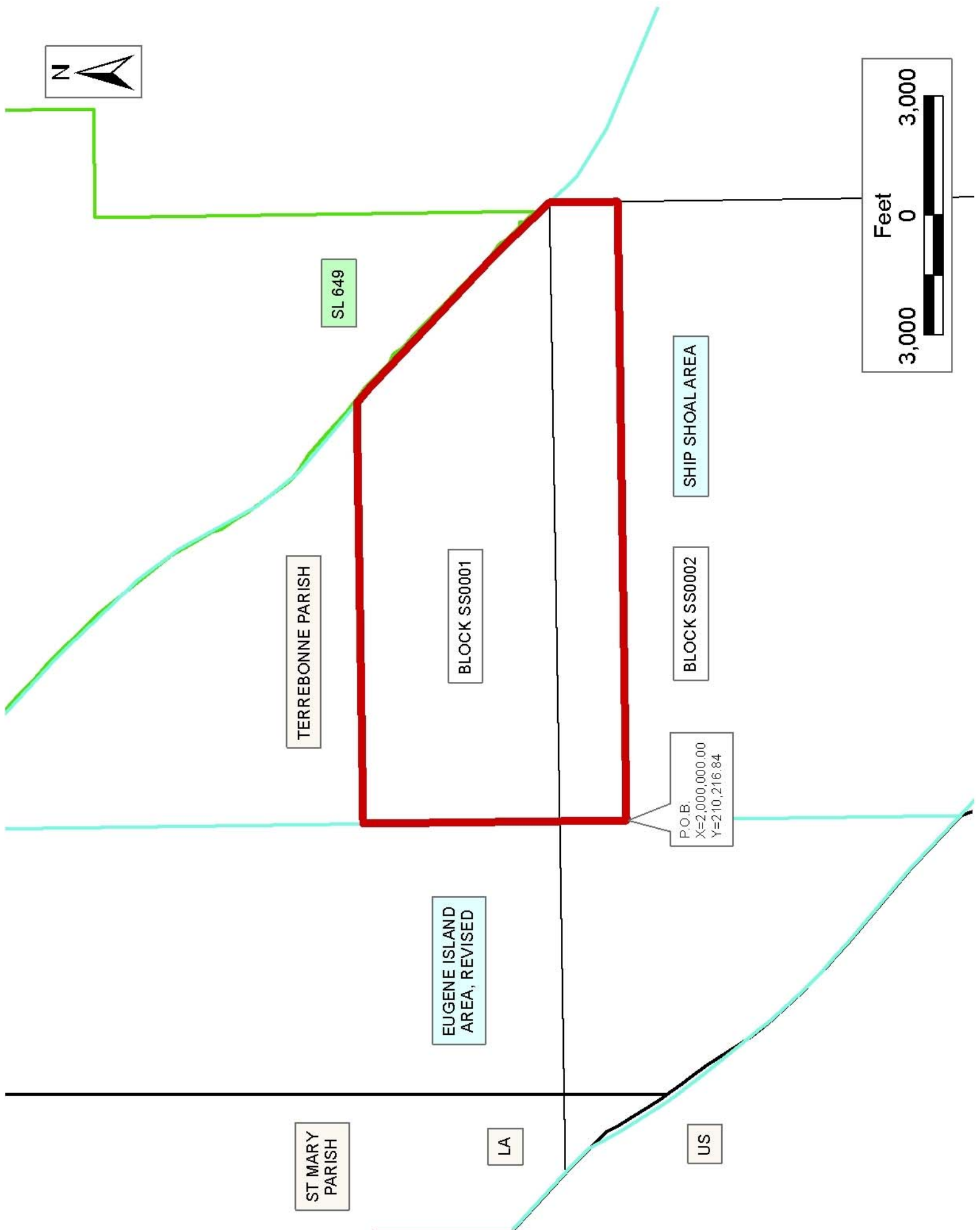
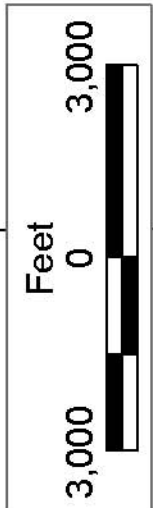
NOTE: The State of Louisiana does hereby reserve, and this lease shall be subject to, the imprescriptible right of surface use in the nature of a servitude in favor of the Department of Natural Resources, including its Offices and Commissions, for the sole purpose of implementing, constructing, servicing and maintaining approved coastal zone management

and/or restoration projects. Utilization of any and all rights derived under this lease by the mineral lessee, its agents, successors or assigns, shall not interfere with nor hinder the reasonable surface use by the Department of Natural Resources, its Offices or Commissions, as herein above reserved.

NOTE: The Department of Wildlife and Fisheries has designated certain areas in the coastal waters of the State of Louisiana as Oyster Seed Bed Areas. The exact location of those Seed Bed Areas must be obtained from the Department of Wildlife and Fisheries and any work done under a mineral lease from the State of Louisiana may necessarily be conducted in conformity with the rules and regulations promulgated by the said Department of Wildlife and Fisheries for Oyster Seed Bed Areas.

Applicant: LESLIE M. COOPER

Bidder	Cash Payment	Price/Acre	Rental	Oil	Gas	Other



TRACT 37762 - Portion of Block 8, Grand Isle Area, Plaquemines Parish, Louisiana

The beds and bottoms of all water bodies belonging to the State of Louisiana located in Block 8, Grand Isle Area, together with any present lands formed by accretion to the shoreline or islands formed therein, located in Plaquemines Parish, Louisiana, owned by and not presently under mineral lease as of September 14, 2005, from the State of Louisiana, the geographical area of which is more fully described as follows: Beginning at the Southeast corner of Block 8, Grand Isle Area, having Coordinates of X = 2,472,417.93 and Y = 200,293.43; thence West 8,175.10 feet along the South boundary of said Block 8 to its intersection with the Coastline as decreed and set forth in June 1975 by the U.S. Supreme Court, said point having Coordinates of X = 2,464,242.83 and Y = 200,293.43; thence Northeasterly on a straight line to a point on the East boundary of said Block 8 having Coordinates of X = 2,472,417.93 and Y = 201,798.72; thence South 1,505.29 feet along the East boundary of said Block 8 to the point of beginning, containing approximately **141.25 acres**, all as more particularly outlined on a plat on file in the Office of Mineral Resources, Department of Natural Resources. All bearings, distances and coordinates are based on Louisiana Coordinate System of 1927, (North or South Zone).

NOTE: The above description of the Tract nominated for lease has been provided and corrected, where required, exclusively by the nomination party. Any mineral lease selected from this Tract and awarded by the Louisiana State Mineral Board shall be without warranty of any kind, either express, implied, or statutory, including, but not limited to, the implied warranties of merchantability and fitness for a particular purpose. Should the mineral lease awarded by the Louisiana State Mineral Board be subsequently modified, cancelled or abrogated due to the existence of conflicting leases, operating agreements, private claims or other future obligations or conditions which may affect all or any portion of the leased Tract, it shall not relieve the Lessee of the obligation to pay any bonus due thereon to the Louisiana State Mineral Board, nor shall the Louisiana State Mineral Board be obligated to refund any consideration paid by the Lessor prior to such modification, cancellation, or abrogation, including, but not limited to, bonuses, rentals and royalties.

NOTE: The State of Louisiana does hereby reserve, and this lease shall be subject to, the imprescriptible right of surface use in the nature of a servitude in favor of the Department of Natural Resources, including its Offices and Commissions, for the sole purpose of implementing, constructing, servicing and maintaining approved coastal zone management and/or restoration projects. Utilization of any and all rights derived under this lease by the mineral lessee, its agents, successors or assigns, shall not interfere with nor hinder the reasonable surface use by the Department of Natural Resources, its Offices or Commissions, as herein above reserved.

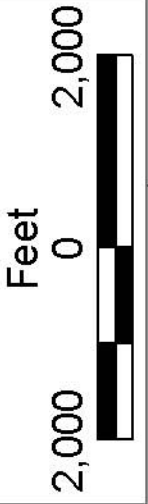
Applicant: S. R. VERRET

Bidder	Cash Payment	Price/Acre	Rental	Oil	Gas	Other



WEST DELTA AREA

BLOCK WD0014



P.O.B.
X=2,472,417.93
Y=200,293.43

PLAQUEMINES PARISH

GRAND ISLE AREA

BLOCK GI0008

SL 797

BLOCK GI0009

TRACT 37763 - Portion of Block 9, Grand Isle Area, Plaquemines Parish, Louisiana

The beds and bottoms of all water bodies belonging to the State of Louisiana located in Block 9, Grand Isle Area, together with any present lands formed by accretion to the shoreline or islands formed therein, located in Plaquemines Parish, Louisiana, owned by and not presently under mineral lease as of September 14, 2005, from the State of Louisiana, the geographical area of which is more fully described as follows: Beginning at the intersection point of the West boundary of Block 9, Grand Isle Area and the southern most Northwest corner of State Lease No. 797, as amended, having Coordinates of X = 2,457,659.87 and Y = 192,363.00; thence North 6,718.30 feet along the West boundary of said Block 9 to its intersection with the Coastline, as decreed and set forth in June 1975 by the U.S. Supreme Court, said point having Coordinates of X = 2,457,659.89 and Y = 199,081.30; thence Northeasterly on a straight line to a point on the West boundary of said State Lease No. 797 having Coordinates of X = 2,463,412.21 and Y = 200,140.49; thence along the West boundary of said State Lease No. 797 the following courses: South 2,977.49 feet to a point having Coordinates of X = 2,463,412.21 and Y = 197,163.00, East 1,331.70 feet to a point having Coordinates of X = 2,464,743.91 and Y = 197,163.00, South 4,800.00 feet to a point having Coordinates of X = 2,464,743.90 and Y = 192,363.00 and West 7,084.03 feet along the boundary of said State Lease No. 797 to the point of beginning, containing approximately **1,103.87 acres**, all as more particularly outlined on a plat on file in the Office of Mineral Resources, Department of Natural Resources. All bearings, distances and coordinates are based on Louisiana Coordinate System of 1927, (North or South Zone).

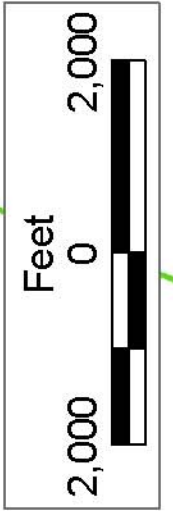
NOTE: The above description of the Tract nominated for lease has been provided and corrected, where required, exclusively by the nomination party. Any mineral lease selected from this Tract and awarded by the Louisiana State Mineral Board shall be without warranty of any kind, either express, implied, or statutory, including, but not limited to, the implied warranties of merchantability and fitness for a particular purpose. Should the mineral lease awarded by the Louisiana State Mineral Board be subsequently modified, cancelled or abrogated due to the existence of conflicting leases, operating agreements, private claims or other future obligations or conditions which may affect all or any portion of the leased Tract, it shall not relieve the Lessee of the obligation to pay any bonus due thereon to the Louisiana State Mineral Board, nor shall the Louisiana State Mineral Board be obligated to refund any consideration paid by the Lessor prior to such modification, cancellation, or abrogation, including, but not limited to, bonuses, rentals and royalties.

NOTE: The State of Louisiana does hereby reserve, and this lease shall be subject to, the imprescriptible right of surface use in the nature of a servitude in favor of the Department of Natural Resources, including its Offices and Commissions, for the sole purpose of implementing, constructing, servicing and maintaining approved coastal zone management

and/or restoration projects. Utilization of any and all rights derived under this lease by the mineral lessee, its agents, successors or assigns, shall not interfere with nor hinder the reasonable surface use by the Department of Natural Resources, its Offices or Commissions, as herein above reserved.

Applicant: S. R. VERRET

Bidder	Cash Payment	Price/Acre	Rental	Oil	Gas	Other



PLAQUEMINES PARISH

JEFFERSON PARISH

GRAND ISLE AREA

BLOCK G10009

BLOCK G10010

SL 797

P.O.B.
X=2,457,659.87
Y=192,363.00

SL 17356

SL 17522

TRACT 37764 - Portion of Block 9, Grand Isle Area, Plaquemines Parish, Louisiana

The beds and bottoms of all water bodies belonging to the State of Louisiana located in Block 9, Grand Isle Area, together with any present lands formed by accretion to the shoreline or islands formed therein, located in Plaquemines Parish, Louisiana, owned by and not presently under mineral lease as of September 14, 2005, from the State of Louisiana, the geographical area of which is more fully described as follows: Beginning at the Northeast corner of Block 9, Grand Isle Area, having Coordinates of X = 2,472,417.93 and Y = 200,293.43; thence South 14,758.04 feet along the East boundary of said Block 9 to its Southeast corner having Coordinates of X = 2,472,417.93 and Y = 185,535.39; thence West 6,592.95 feet along the Southern boundary of said Block 9 to the Southeast corner of State Lease No. 797, as amended, having Coordinates of X = 2,465,824.98 and Y = 185,535.39; thence along the East boundary of said State Lease No. 797 the following courses: North 22 degrees 25 minutes 16 seconds East 7,826.23 feet to a point having Coordinates of X = 2,468,810.00 and Y = 192,770.00, North 3,575.00 feet to a point having Coordinates of X = 2,468,809.99 and Y = 196,345.00 and North 35 degrees 11 minutes 49 seconds West 4,831.80 feet to a point on the North boundary of said Block 9 having Coordinates of X = 2,466,025.00 and Y = 200,293.43; thence East 6,392.93 feet along the North boundary of said Block 9 to the point of beginning, containing approximately **1,596.46 acres**, all as more particularly outlined on a plat on file in the Office of Mineral Resources, Department of Natural Resources. All bearings, distances and coordinates are based on Louisiana Coordinate System of 1927, (North or South Zone).

NOTE: The above description of the Tract nominated for lease has been provided and corrected, where required, exclusively by the nomination party. Any mineral lease selected from this Tract and awarded by the Louisiana State Mineral Board shall be without warranty of any kind, either express, implied, or statutory, including, but not limited to, the implied warranties of merchantability and fitness for a particular purpose. Should the mineral lease awarded by the Louisiana State Mineral Board be subsequently modified, cancelled or abrogated due to the existence of conflicting leases, operating agreements, private claims or other future obligations or conditions which may affect all or any portion of the leased Tract, it shall not relieve the Lessee of the obligation to pay any bonus due thereon to the Louisiana State Mineral Board, nor shall the Louisiana State Mineral Board be obligated to refund any consideration paid by the Lessor prior to such modification, cancellation, or abrogation, including, but not limited to, bonuses, rentals and royalties.

NOTE: The State of Louisiana does hereby reserve, and this lease shall be subject to, the imprescriptible right of surface use in the nature of a servitude in favor of the Department of Natural Resources, including its Offices and Commissions, for the sole purpose of implementing, constructing, servicing and maintaining approved coastal zone management and/or restoration projects. Utilization of any and all rights derived

under this lease by the mineral lessee, its agents, successors or assigns, shall not interfere with nor hinder the reasonable surface use by the Department of Natural Resources, its Offices or Commissions, as herein above reserved.

Applicant: S. R. VERRET

Bidder	Cash Payment	Price/Acre	Rental	Oil	Gas	Other

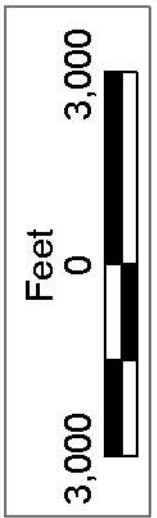


WEST DELTA AREA

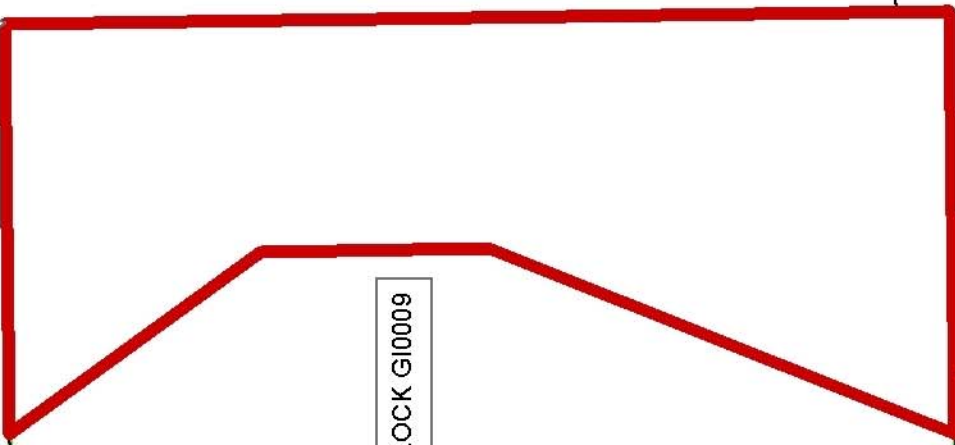
BLOCK
WD0014

US

LA



P.O.B.
X=2,472,417.93
Y=200,293.43



BLOCK
GI0009

PLAQUEMINES
PARISH

GRAND ISLE AREA

SL 797

SL 17359

SL 14346

SL 17358

JEFFERSON
PARISH

SL 17356

TRACT 37765 - Portion of Block 10, Grand Isle Area, Jefferson and Plaquemines Parishes, Louisiana

The beds and bottoms of all water bodies belonging to the State of Louisiana located in Block 10, Grand Isle Area, together with any present lands formed by accretion to the shoreline or islands formed therein, located in Jefferson and Plaquemines Parishes, Louisiana, owned by and not presently under mineral lease as of September 14, 2005, from the State of Louisiana, the geographical area of which is more fully described as follows: Beginning at a point on the East boundary of Block 10, Grand Isle Area having Coordinates of X = 2,457,659.89 and Y = 192,914.41, said point being the Northeast corner of State Lease No. 17356; thence West 14,758.04 feet along the North boundary of State Lease No. 17356, State Lease No. 17522, and State Lease No. 17355 to a point having Coordinates of X = 2,442,901.85 and Y = 192,914.41; thence North 3,449.48 feet along the West boundary to its intersection with the Coastline, as decreed and set forth in June 1975 by the U.S. Supreme Court, said point having Coordinates of X = 2,442,901.85 and Y = 196,363.89; thence Northeasterly on a straight line to a point on the East boundary of Block 10 having Coordinates of X = 2,457,659.89 and Y = 199,081.30; thence South 6,166.89 feet along the East boundary of said Block 10 to the point of beginning, containing approximately **1,629.00 acres**, all as more particularly outlined on a plat on file in the Office of Mineral Resources, Department of Natural Resources. All bearings, distances and coordinates are based on Louisiana Coordinate System of 1927, (North or South Zone).

NOTE: The above description of the Tract nominated for lease has been provided and corrected, where required, exclusively by the nomination party. Any mineral lease selected from this Tract and awarded by the Louisiana State Mineral Board shall be without warranty of any kind, either express, implied, or statutory, including, but not limited to, the implied warranties of merchantability and fitness for a particular purpose. Should the mineral lease awarded by the Louisiana State Mineral Board be subsequently modified, cancelled or abrogated due to the existence of conflicting leases, operating agreements, private claims or other future obligations or conditions which may affect all or any portion of the leased Tract, it shall not relieve the Lessee of the obligation to pay any bonus due thereon to the Louisiana State Mineral Board, nor shall the Louisiana State Mineral Board be obligated to refund any consideration paid by the Lessor prior to such modification, cancellation, or abrogation, including, but not limited to, bonuses, rentals and royalties.

NOTE: The State of Louisiana does hereby reserve, and this lease shall be subject to, the imprescriptible right of surface use in the nature of a servitude in favor of the Department of Natural Resources, including its Offices and Commissions, for the sole purpose of implementing, constructing, servicing and maintaining approved coastal zone management and/or restoration projects. Utilization of any and all rights derived under this lease by the mineral lessee, its agents, successors or assigns, shall not interfere with nor hinder the reasonable surface use by the

Department of Natural Resources, its Offices or Commissions, as herein above reserved.

Applicant: S. R. VERRET

Bidder	Cash Payment	Price/Acre	Rental	Oil	Gas	Other

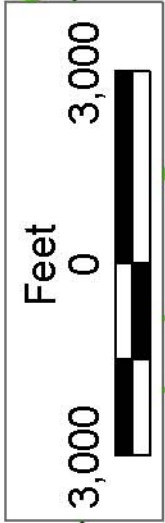


PLAQUEMINES PARISH

BLOCK GI0009

P.O.B.
X=2,457,659.89
Y=192,914.41

SL 797



JEFFERSON PARISH

GRAND ISLE AREA

BLOCK GI0010

SL 17356

SL 17522

SL 17355

BLOCK GI0011

TRACT 37766 - Portion of Block 11, Grand Isle Area, Jefferson Parish, Louisiana

The beds and bottoms of all water bodies belonging to the State of Louisiana located in Block 11, Grand Isle Area, together with any present lands formed by accretion to the shoreline or islands formed therein, located in Jefferson Parish, Louisiana, owned by and not presently under mineral lease as of September 14, 2005, from the State of Louisiana, the geographical area of which is more fully described as follows: Beginning at the Southeast corner of Block 11, Grand Isle Area having Coordinates of X = 2,442,901.85 and Y = 185,535.39; thence West 7,379.02 feet along the South boundary of said Block 11 to a point having Coordinates of X = 2,435,522.83 and Y = 185,535.39; thence North 9,469.80 feet to the intersection with the Coastline, as decreed and set forth in June 1975 by the U.S. Supreme Court, said point having Coordinates of X = 2,435,522.83 and Y = 195,005.19; thence Northeasterly on a straight line to a point on the East boundary of said Block 11 having Coordinates of X = 2,442,901.85 and Y = 196,363.89; thence South 10,828.50 feet along the East line of said Block 11 to the point of beginning, containing approximately **1,179.26 acres**, all as more particularly outlined on a plat on file in the Office of Mineral Resources, Department of Natural Resources. All bearings, distances and coordinates are based on Louisiana Coordinate System of 1927, (North or South Zone).

NOTE: The above description of the Tract nominated for lease has been provided and corrected, where required, exclusively by the nomination party. Any mineral lease selected from this Tract and awarded by the Louisiana State Mineral Board shall be without warranty of any kind, either express, implied, or statutory, including, but not limited to, the implied warranties of merchantability and fitness for a particular purpose. Should the mineral lease awarded by the Louisiana State Mineral Board be subsequently modified, cancelled or abrogated due to the existence of conflicting leases, operating agreements, private claims or other future obligations or conditions which may affect all or any portion of the leased Tract, it shall not relieve the Lessee of the obligation to pay any bonus due thereon to the Louisiana State Mineral Board, nor shall the Louisiana State Mineral Board be obligated to refund any consideration paid by the Lessor prior to such modification, cancellation, or abrogation, including, but not limited to, bonuses, rentals and royalties.

NOTE: The State of Louisiana does hereby reserve, and this lease shall be subject to, the imprescriptible right of surface use in the nature of a servitude in favor of the Department of Natural Resources, including its Offices and Commissions, for the sole purpose of implementing, constructing, servicing and maintaining approved coastal zone management and/or restoration projects. Utilization of any and all rights derived under this lease by the mineral lessee, its agents, successors or assigns, shall not interfere with nor hinder the reasonable surface use by the Department of Natural Resources, its Offices or Commissions, as herein above reserved.

Applicant: S. R. VERRET

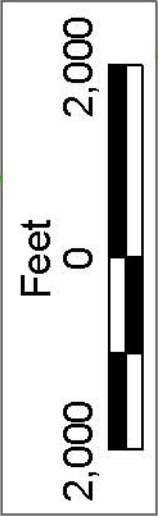
Bidder	Cash Payment	Price/ Acre	Rental	Oil	Gas	Other



BLOCK GI0010

SL 17355

SL 17357



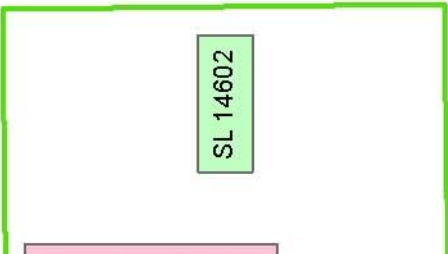
P.O.B.
X=2,442,901.85
Y=185,535.39

JEFFERSON PARISH

BLOCK GI0011

GRAND ISLE AREA

SL 800



SL 14602

TRACT 37767 - Portion of Block 11, Grand Isle Area, Jefferson Parish, Louisiana

The beds and bottoms of all water bodies belonging to the State of Louisiana located in Block 11, Grand Isle Area, together with any present lands formed by accretion to the shoreline or islands formed therein, located in Jefferson Parish, Louisiana, owned by and not presently under mineral lease as of September 14, 2005, from the State of Louisiana, the geographical area of which is more fully described as follows: Beginning at point on the South boundary of Block 11, Grand Isle Area having Coordinates of X = 2,435,522.83 and Y = 185,535.39; thence West 6,954.65 feet along the South boundary of said Block 11 to the most southern Southeast corner of State Lease No. 14602, as amended, having Coordinates of X = 2,428,568.18 and Y = 185,535.39; thence along the boundary of said State Lease No. 14602 the following courses: North 1,532.59 feet to a point having Coordinates of X = 2,428,568.18 and Y = 187,067.98, East 3,043.72 feet to a point having Coordinates of X = 2,431,611.90 and Y = 187,067.98, North 4,605.53 feet to a point having Coordinates of X = 2,431,611.90 and Y = 191,673.51 and West 3,468.09 feet to a point on the West boundary of said Block 11, said point is the Northwest corner of said State Lease No. 14602 having Coordinates of X = 2,428,143.81 and Y = 191,673.51; thence North 1,972.97 feet along the West boundary of said Block 11 to its intersection with the Coastline, as decreed and set forth in June 1975 by the U.S. Supreme Court, said point having Coordinates of X = 2,428,143.81 and Y = 193,646.48; thence Northeasterly on a straight line to point having Coordinates of X = 2,435,522.83 and Y = 195,005.19; thence South 9,469.80 feet to the point of beginning, containing approximately **1,107.49 acres**, all as more particularly outlined on a plat on file in the Office of Mineral Resources, Department of Natural Resources. All bearings, distances and coordinates are based on Louisiana Coordinate System of 1927, (North or South Zone).

NOTE: The above description of the Tract nominated for lease has been provided and corrected, where required, exclusively by the nomination party. Any mineral lease selected from this Tract and awarded by the Louisiana State Mineral Board shall be without warranty of any kind, either express, implied, or statutory, including, but not limited to, the implied warranties of merchantability and fitness for a particular purpose. Should the mineral lease awarded by the Louisiana State Mineral Board be subsequently modified, cancelled or abrogated due to the existence of conflicting leases, operating agreements, private claims or other future obligations or conditions which may affect all or any portion of the leased Tract, it shall not relieve the Lessee of the obligation to pay any bonus due thereon to the Louisiana State Mineral Board, nor shall the Louisiana State Mineral Board be obligated to refund any consideration paid by the Lessor prior to such modification, cancellation, or abrogation, including, but not limited to, bonuses, rentals and royalties.

NOTE: The State of Louisiana does hereby reserve, and this lease shall be subject to, the imprescriptible right of surface use in the nature of a

servitude in favor of the Department of Natural Resources, including its Offices and Commissions, for the sole purpose of implementing, constructing, servicing and maintaining approved coastal zone management and/or restoration projects. Utilization of any and all rights derived under this lease by the mineral lessee, its agents, successors or assigns, shall not interfere with nor hinder the reasonable surface use by the Department of Natural Resources, its Offices or Commissions, as herein above reserved.

Applicant: S. R. VERRET

Bidder	Cash Payment	Price/Acre	Rental	Oil	Gas	Other



JEFFERSON PARISH

GRAND ISLE AREA

BLOCK G10011

BLOCK G10012

SL 14602

SL 16477

SL 14031

SL 800

SL 799

P.O.B.
X=2,435,522.83
Y=185,535.39

