

TRACT 37748 - Portion of Blocks 17, and 4, Vermilion Area, Revised, Vermilion Parish, Louisiana

The beds and bottoms of all water bodies belonging to the State of Louisiana located in Blocks 17, and 4, Vermilion Area, Revised, together with any present lands formed by accretion to the shoreline or islands formed therein, located in Vermilion Parish, Louisiana, owned by and not presently under mineral lease as of September 14, 2005, from the State of Louisiana, the geographical area of which is more fully described as follows: Beginning at a point on the West line of Block 17, Vermilion Area, Revised, also being the most Westerly Northwest corner of State Lease No. 17156 having Coordinates of X = 1,632,624.12 and Y = 313,650.01; thence North 3,932.81 feet along the West line of said Block 17 to its Northwest corner, also being the Southwest corner of Block 4, Vermilion Area, Revised, having Coordinates of X = 1,632,624.12 and Y = 317,582.82; thence North 9,900.77 feet along the West line of said Block 4 to its Northwest corner also being a point on the Coastline per the Supreme Court Decree dated June 16, 1975 having Coordinates of X = 1,632,624.12 and Y = 327,483.59; thence along said Block 4 and said Coastline the following courses: Southeasterly on a straight line to a point having Coordinates of X = 1,639,027 and Y = 326,645 and Southeasterly on a straight line to a point having Coordinates of X = 1,640,003.15 and Y = 326,476.72; thence South 8,893.90 feet to a point on the South line of said Block 4, also being a point on the North line of State Lease No. 3624, as amended having Coordinates of X = 1,640,003.15 and Y = 317,582.82; thence along the boundary of said State Lease No. 3624 the following courses: West 2,979.03 feet and South 3,932.81 feet to the Southwest corner of said State Lease No. 3624, also being a point on the boundary of said State Lease No. 17156 having Coordinates of X = 1,637,024.12 and Y = 313,650.01; thence West 4,400.00 feet along the boundary of said State Lease No. 17156 to the point of beginning, containing approximately **1,992.13 acres**, all as more particularly outlined on a plat on file in the Office of Mineral Resources, Department of Natural Resources. All bearings, distances and coordinates are based on Louisiana Coordinate System of 1927, (North or South Zone).

NOTE: The above description of the Tract nominated for lease has been provided and corrected, where required, exclusively by the nomination party. Any mineral lease selected from this Tract and awarded by the Louisiana State Mineral Board shall be without warranty of any kind, either express, implied, or statutory, including, but not limited to, the implied warranties of merchantability and fitness for a particular purpose. Should the mineral lease awarded by the Louisiana State Mineral Board be subsequently modified, cancelled or abrogated due to the existence of conflicting leases, operating agreements, private claims or other future obligations or conditions which may affect all or any portion of the leased Tract, it shall not relieve the Lessee of the obligation to pay any bonus due thereon to the Louisiana State Mineral Board, nor shall the Louisiana State Mineral Board be obligated to refund any consideration

paid by the Lessor prior to such modification, cancellation, or abrogation, including, but not limited to, bonuses, rentals and royalties.

NOTE: The State of Louisiana does hereby reserve, and this lease shall be subject to, the imprescriptible right of surface use in the nature of a servitude in favor of the Department of Natural Resources, including its Offices and Commissions, for the sole purpose of implementing, constructing, servicing and maintaining approved coastal zone management and/or restoration projects. Utilization of any and all rights derived under this lease by the mineral lessee, its agents, successors or assigns, shall not interfere with nor hinder the reasonable surface use by the Department of Natural Resources, its Offices or Commissions, as herein above reserved.

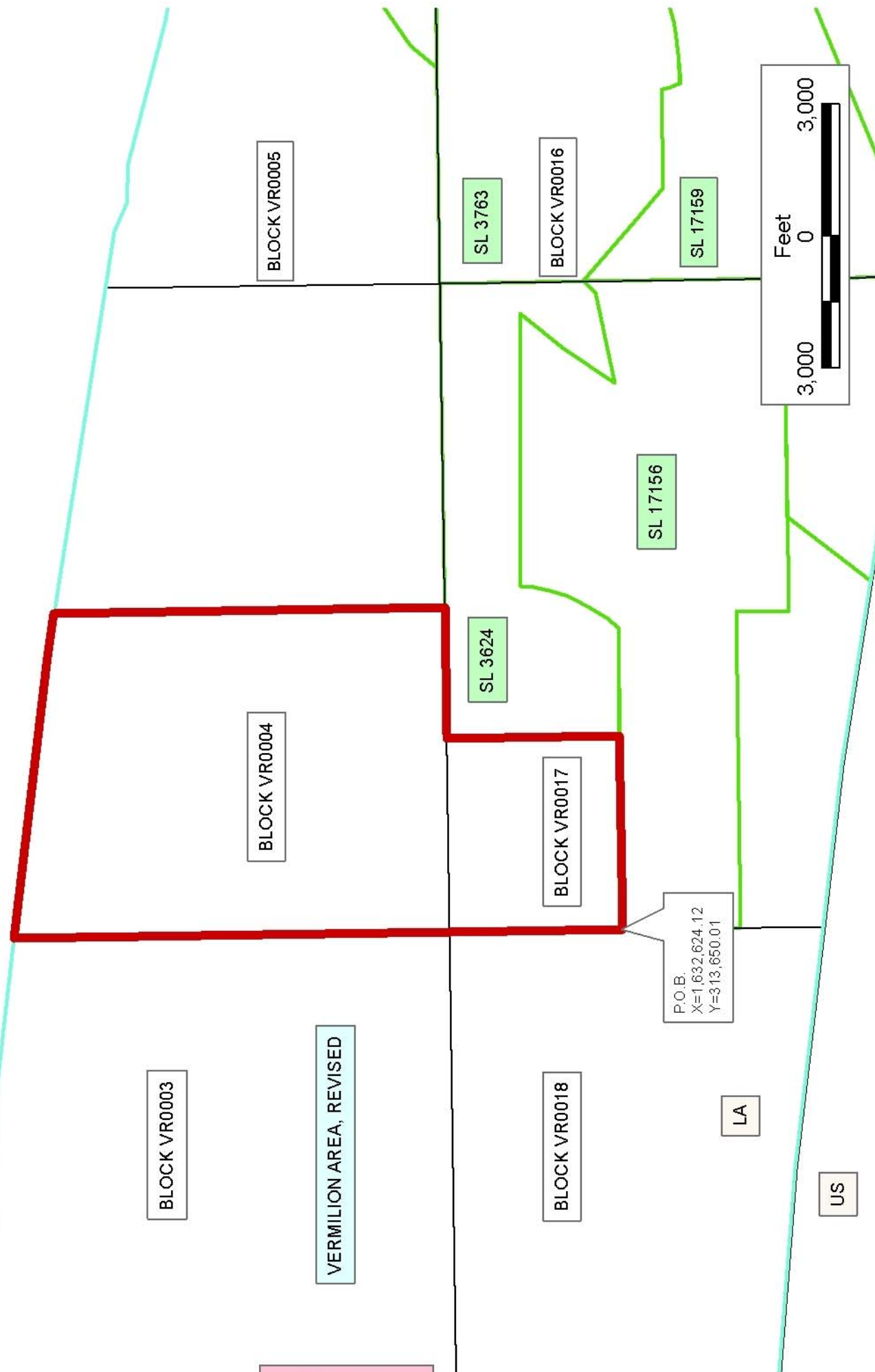
Applicant: WOODLAND PETROLEUM CORPORATION

Bidder	Cash Payment	Price/Acre	Rental	Oil	Gas	Other



VERMILION PARISH

T17S-R1W



P.O.B.
 X=1,632,624.12
 Y=313,650.01

LA

US

TRACT 37749 - Portion of Block 4, Vermilion Area, Revised, Vermilion Parish, Louisiana

The beds and bottoms of all water bodies belonging to the State of Louisiana located in Block 4, Vermilion Area, Revised, together with any present lands formed by accretion to the shoreline or islands formed therein, located in Vermilion Parish, Louisiana, owned by and not presently under mineral lease as of September 14, 2005, from the State of Louisiana, the geographical area of which is more fully described as follows: Beginning at the Southeast corner of Block 4, Vermilion Area, Revised having Coordinates of X = 1,647,382.17 and Y = 317,582.82; thence West 7,379.02 feet along the South line of said Block 4 to a point having Coordinates of X = 1,640,003.15 and Y = 317,582.82; thence North 8,893.90 feet to a point on the North line of said Block 4 and a point on the Coastline as per the Supreme Court Decree dated June 16, 1975 having Coordinates of X = 1,640,003.15 and Y = 326,476.72; thence Southeasterly on a straight line to the Northeast corner of said Block 4 having Coordinates of X = 1,647,382.17 and Y = 325,204.61; thence South 7,621.79 feet along the East line of said Block 4 to the point of beginning, containing approximately **1,398.87 acres**, all as more particularly outlined on a plat on file in the Office of Mineral Resources, Department of Natural Resources. All bearings, distances and coordinates are based on Louisiana Coordinate System of 1927, (North or South Zone).

NOTE: The above description of the Tract nominated for lease has been provided and corrected, where required, exclusively by the nomination party. Any mineral lease selected from this Tract and awarded by the Louisiana State Mineral Board shall be without warranty of any kind, either express, implied, or statutory, including, but not limited to, the implied warranties of merchantability and fitness for a particular purpose. Should the mineral lease awarded by the Louisiana State Mineral Board be subsequently modified, cancelled or abrogated due to the existence of conflicting leases, operating agreements, private claims or other future obligations or conditions which may affect all or any portion of the leased Tract, it shall not relieve the Lessee of the obligation to pay any bonus due thereon to the Louisiana State Mineral Board, nor shall the Louisiana State Mineral Board be obligated to refund any consideration paid by the Lessor prior to such modification, cancellation, or abrogation, including, but not limited to, bonuses, rentals and royalties.

NOTE: The State of Louisiana does hereby reserve, and this lease shall be subject to, the imprescriptible right of surface use in the nature of a servitude in favor of the Department of Natural Resources, including its Offices and Commissions, for the sole purpose of implementing, constructing, servicing and maintaining approved coastal zone management and/or restoration projects. Utilization of any and all rights derived under this lease by the mineral lessee, its agents, successors or assigns, shall not interfere with nor hinder the reasonable surface use by the Department of Natural Resources, its Offices or Commissions, as herein above reserved.

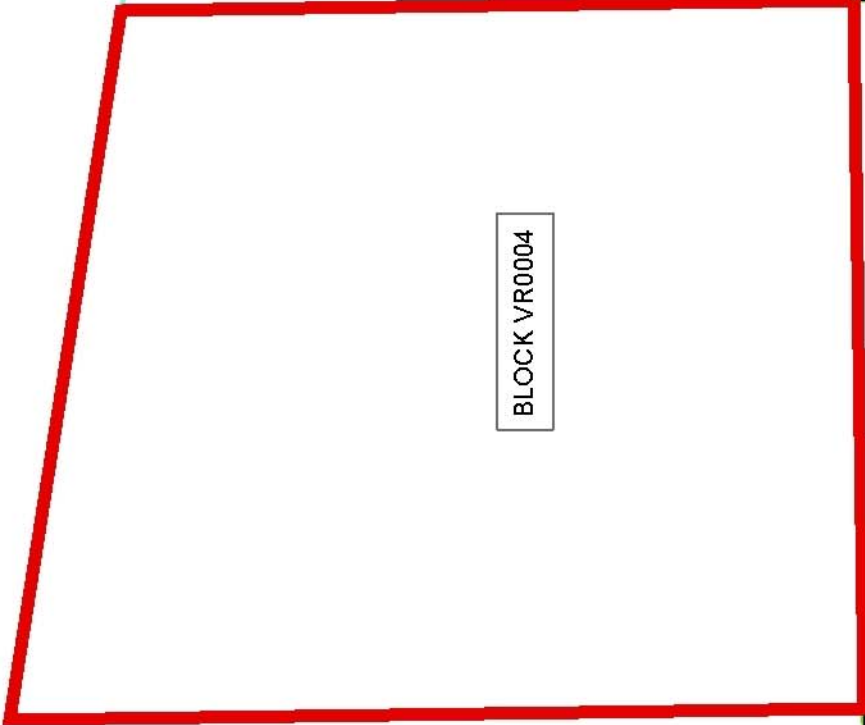
Applicant: WOODLAND PETROLEUM CORPORATION

Bidder	Cash Payment	Price/Acre	Rental	Oil	Gas	Other



VERMILION PARISH

T17S-R1W



VERMILION AREA, REVISED

BLOCK VR0004

BLOCK VR0005

SL 3624

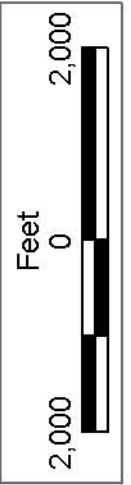
SL 17156

SL 3763

BLOCK VR0016

BLOCK VR0017

P.O.B.
X=1,647,382.17
Y=317,582.82



TRACT 37750 - Portion of Block 5, Vermilion Area, Revised, Vermilion Parish, Louisiana

The beds and bottoms of all water bodies belonging to the State of Louisiana located in Block 5, Vermilion Area, Revised, together with any present lands formed by accretion to the shoreline or islands formed therein, located in Vermilion Parish, Louisiana, owned by and not presently under mineral lease as of September 14, 2005, from the State of Louisiana, the geographical area of which is more fully described as follows: Beginning at the Southwest corner of Block 5, Vermilion Area, Revised having Coordinates of X = 1,647,382.17 and Y = 317,582.82; thence North 7,621.79 feet along the West line of said Block 5 to its Northwest corner also being a point on the Coastline per Supreme Court Decree dated June 16, 1975 having Coordinates of X = 1,647,382.17 and Y = 325,204.61; thence Southeasterly on a straight line to a point having Coordinates of X = 1,648,656 and Y = 324,985; thence Southeasterly on a straight line to a point having Coordinates of X = 1,649,308 and Y = 324,684; thence Southeasterly on a straight line to a point having Coordinates of X = 1,650,220 and Y = 324,644; thence Southeasterly on a straight line to a point having Coordinates of X = 1,651,294 and Y = 324,333; thence Southeasterly on a straight line to a point having Coordinates of X = 1,653,430 and Y = 323,751; thence Southeasterly on a straight line to a point having Coordinates of X = 1,655,896 and Y = 323,305; thence Northeasterly on a straight line to a point having Coordinates of X = 1,657,050 and Y = 323,540; thence Southeasterly on a straight line to a point having Coordinates of X = 1,658,887 and Y = 323,134; thence Northeasterly on a straight line to the Northwest corner of State Lease No. 3762, as amended having Coordinates of X = 1,659,935.31 and Y = 323,168.19; thence along the boundary of said State Lease No. 3762 the following courses and distances: South 39 degrees 37 minutes 46 seconds West 1,184.99 feet, South 86 degrees 52 minutes 36 seconds West 2,663.81 feet, West 220.00 feet, South 85 degrees 55 minutes 02 seconds West 600.00 feet, South 83 degrees 30 minutes 00 seconds West 250.00 feet, South 78 degrees 15 minutes 00 seconds West 500.00 feet, South 74 degrees 14 minutes 55 seconds West 300.01 feet, South 67 degrees 50 minutes 03 seconds West 43.49 feet, South 08 degrees 34 minutes 13 seconds East 1,553.71 feet, South 08 degrees 34 minutes 13 seconds East 666.76 feet, South 56 degrees 12 minutes 11 seconds West 2,626.88 feet and South 39 degrees 48 minutes 18 seconds West 781.02 feet to the Southwest corner of said State Lease No. 3762, also being a point on the South line of said Block 5 having Coordinates of X = 1,652,282.18 and Y = 317,582.82; thence West 4,900.01 feet along the South line of said Block 5 to the point of beginning, containing approximately **1,223.07 acres**, all as more particularly outlined on a plat on file in the Office of Mineral Resources, Department of Natural Resources. All bearings, distances and coordinates are based on Louisiana Coordinate System of 1927, (North or South Zone).

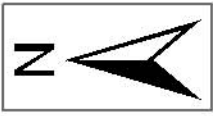
NOTE: The above description of the Tract nominated for lease has been provided and corrected, where required, exclusively by the nomination

party. Any mineral lease selected from this Tract and awarded by the Louisiana State Mineral Board shall be without warranty of any kind, either express, implied, or statutory, including, but not limited to, the implied warranties of merchantability and fitness for a particular purpose. Should the mineral lease awarded by the Louisiana State Mineral Board be subsequently modified, cancelled or abrogated due to the existence of conflicting leases, operating agreements, private claims or other future obligations or conditions which may affect all or any portion of the leased Tract, it shall not relieve the Lessee of the obligation to pay any bonus due thereon to the Louisiana State Mineral Board, nor shall the Louisiana State Mineral Board be obligated to refund any consideration paid by the Lessor prior to such modification, cancellation, or abrogation, including, but not limited to, bonuses, rentals and royalties.

NOTE: The State of Louisiana does hereby reserve, and this lease shall be subject to, the imprescriptible right of surface use in the nature of a servitude in favor of the Department of Natural Resources, including its Offices and Commissions, for the sole purpose of implementing, constructing, servicing and maintaining approved coastal zone management and/or restoration projects. Utilization of any and all rights derived under this lease by the mineral lessee, its agents, successors or assigns, shall not interfere with nor hinder the reasonable surface use by the Department of Natural Resources, its Offices or Commissions, as herein above reserved.

Applicant: WOODLAND PETROLEUM CORPORATION

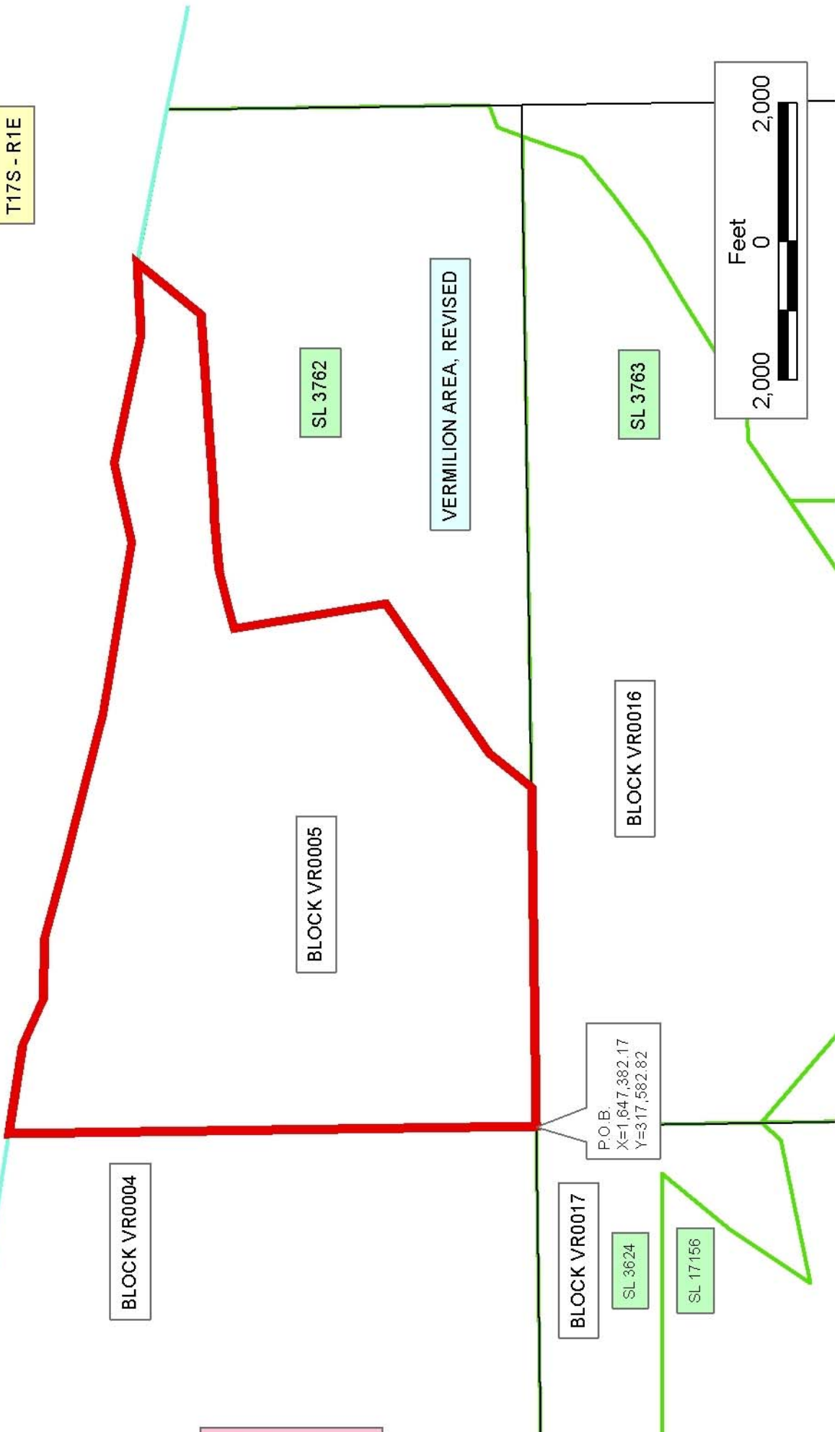
Bidder	Cash Payment	Price/Acre	Rental	Oil	Gas	Other



VERMILION PARISH

T17S - R1W

T17S - R1E



TRACT 37751 - Portion of Block 6, Vermilion Area, Revised, Vermilion Parish, Louisiana

The beds and bottoms of all water bodies belonging to the State of Louisiana located in Block 6, Vermilion Area, Revised, together with any present lands formed by accretion to the shoreline or islands formed therein, located in Vermilion Parish, Louisiana, owned by and not presently under mineral lease as of September 14, 2005, from the State of Louisiana, the geographical area of which is more fully described as follows: Beginning at a point on the South line of Block 6, Vermilion Area, Revised having Coordinates of X = 1,669,519.25 and Y = 311,024.77; thence West 7,379.03 feet along the South line of said Block 6 to its Southwest corner having Coordinates of X = 1,662,140.22 and Y = 311,024.77; thence North 11,678.07 feet along the West line of said Block 6 to its Northwest corner and a point on the Coastline per the Supreme Court Decree dated June 16, 1975 having Coordinates of X = 1,662,140.22 and Y = 322,702.84; Southeasterly on a straight line to a point having Coordinates of X = 1,663,290 and Y = 322,457, Southeasterly on a straight line to a point having Coordinates of X = 1,665,833 and Y = 321,916, Southeasterly on a straight line to a point having Coordinates of X = 1,667,091 and Y = 321,595, Southeasterly on a straight line to a point having Coordinates of X = 1,669,012 and Y = 321,069 and Southeasterly on a straight line to a point having Coordinates of X = 1,669,519.25 and Y = 320,898.82; thence South 9,874.05 feet to the point of beginning, containing approximately **1,837.04 acres**, all as more particularly outlined on a plat on file in the Office of Mineral Resources, Department of Natural Resources. All bearings, distances and coordinates are based on Louisiana Coordinate System of 1927, (North or South Zone).

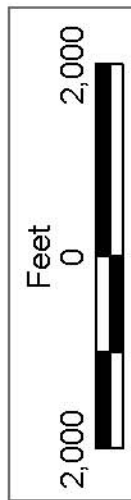
NOTE: The above description of the Tract nominated for lease has been provided and corrected, where required, exclusively by the nomination party. Any mineral lease selected from this Tract and awarded by the Louisiana State Mineral Board shall be without warranty of any kind, either express, implied, or statutory, including, but not limited to, the implied warranties of merchantability and fitness for a particular purpose. Should the mineral lease awarded by the Louisiana State Mineral Board be subsequently modified, cancelled or abrogated due to the existence of conflicting leases, operating agreements, private claims or other future obligations or conditions which may affect all or any portion of the leased Tract, it shall not relieve the Lessee of the obligation to pay any bonus due thereon to the Louisiana State Mineral Board, nor shall the Louisiana State Mineral Board be obligated to refund any consideration paid by the Lessor prior to such modification, cancellation, or abrogation, including, but not limited to, bonuses, rentals and royalties.

NOTE: The State of Louisiana does hereby reserve, and this lease shall be subject to, the imprescriptible right of surface use in the nature of a servitude in favor of the Department of Natural Resources, including its Offices and Commissions, for the sole purpose of implementing, constructing, servicing and maintaining approved coastal zone management

and/or restoration projects. Utilization of any and all rights derived under this lease by the mineral lessee, its agents, successors or assigns, shall not interfere with nor hinder the reasonable surface use by the Department of Natural Resources, its Offices or Commissions, as herein above reserved.

Applicant: WOODLAND PETROLEUM CORPORATION

Bidder	Cash Payment	Price/Acre	Rental	Oil	Gas	Other



VERMILION PARISH

T17S - R1E

VERMILION AREA, REVISED

P.O.B.
X=1,669,519.25
Y=311,024.77

BLOCK VR0006

BLOCK VR0015

SL 3762

BLOCK VR0005

SL 3763

BLOCK VR0016

TRACT 37752 - Portion of Block 6, Vermilion Area, Revised, Vermilion Parish, Louisiana

The beds and bottoms of all water bodies belonging to the State of Louisiana located in Block 6, Vermilion Area, Revised, together with any present lands formed by accretion to the shoreline or islands formed therein, located in Vermilion Parish, Louisiana, owned by and not presently under mineral lease as of September 14, 2005, from the State of Louisiana, the geographical area of which is more fully described as follows: Beginning at a point on the South line of Block 6, Vermilion Area, Revised having Coordinates of X = 1,669,519.25 and Y = 311,024.77; thence North 9,874.05 feet to a point on the North line of said Block 6 having Coordinates of X = 1,669,519.25 and Y = 320,898.82; thence along said Block 6 and the Coastline per the Supreme Court Decree dated June 16, 1975 the following courses: Southeasterly on a straight line to a point having Coordinates of X = 1,671,018 and Y = 320,396, Southeasterly on a straight line to a point having Coordinates of X = 1,675,346 and Y = 319,196 and Southeasterly on a straight line to the Northeast corner of said Block 6 having Coordinates of X = 1,676,898.27 and Y = 318,813.64; thence South 7,788.87 feet along the East line of said Block 6 to its Southeast corner having Coordinates of X = 1,676,898.27 and Y = 311,024.77; thence West 7,379.02 feet along the South line of said Block 6 to the point of beginning, containing approximately **1,486.94 acres**, all as more particularly outlined on a plat on file in the Office of Mineral Resources, Department of Natural Resources. All bearings, distances and coordinates are based on Louisiana Coordinate System of 1927, (North or South Zone).

NOTE: The above description of the Tract nominated for lease has been provided and corrected, where required, exclusively by the nomination party. Any mineral lease selected from this Tract and awarded by the Louisiana State Mineral Board shall be without warranty of any kind, either express, implied, or statutory, including, but not limited to, the implied warranties of merchantability and fitness for a particular purpose. Should the mineral lease awarded by the Louisiana State Mineral Board be subsequently modified, cancelled or abrogated due to the existence of conflicting leases, operating agreements, private claims or other future obligations or conditions which may affect all or any portion of the leased Tract, it shall not relieve the Lessee of the obligation to pay any bonus due thereon to the Louisiana State Mineral Board, nor shall the Louisiana State Mineral Board be obligated to refund any consideration paid by the Lessor prior to such modification, cancellation, or abrogation, including, but not limited to, bonuses, rentals and royalties.

NOTE: The State of Louisiana does hereby reserve, and this lease shall be subject to, the imprescriptible right of surface use in the nature of a servitude in favor of the Department of Natural Resources, including its Offices and Commissions, for the sole purpose of implementing, constructing, servicing and maintaining approved coastal zone management and/or restoration projects. Utilization of any and all rights derived

under this lease by the mineral lessee, its agents, successors or assigns, shall not interfere with nor hinder the reasonable surface use by the Department of Natural Resources, its Offices or Commissions, as herein above reserved.

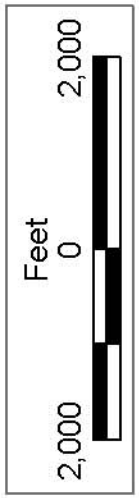
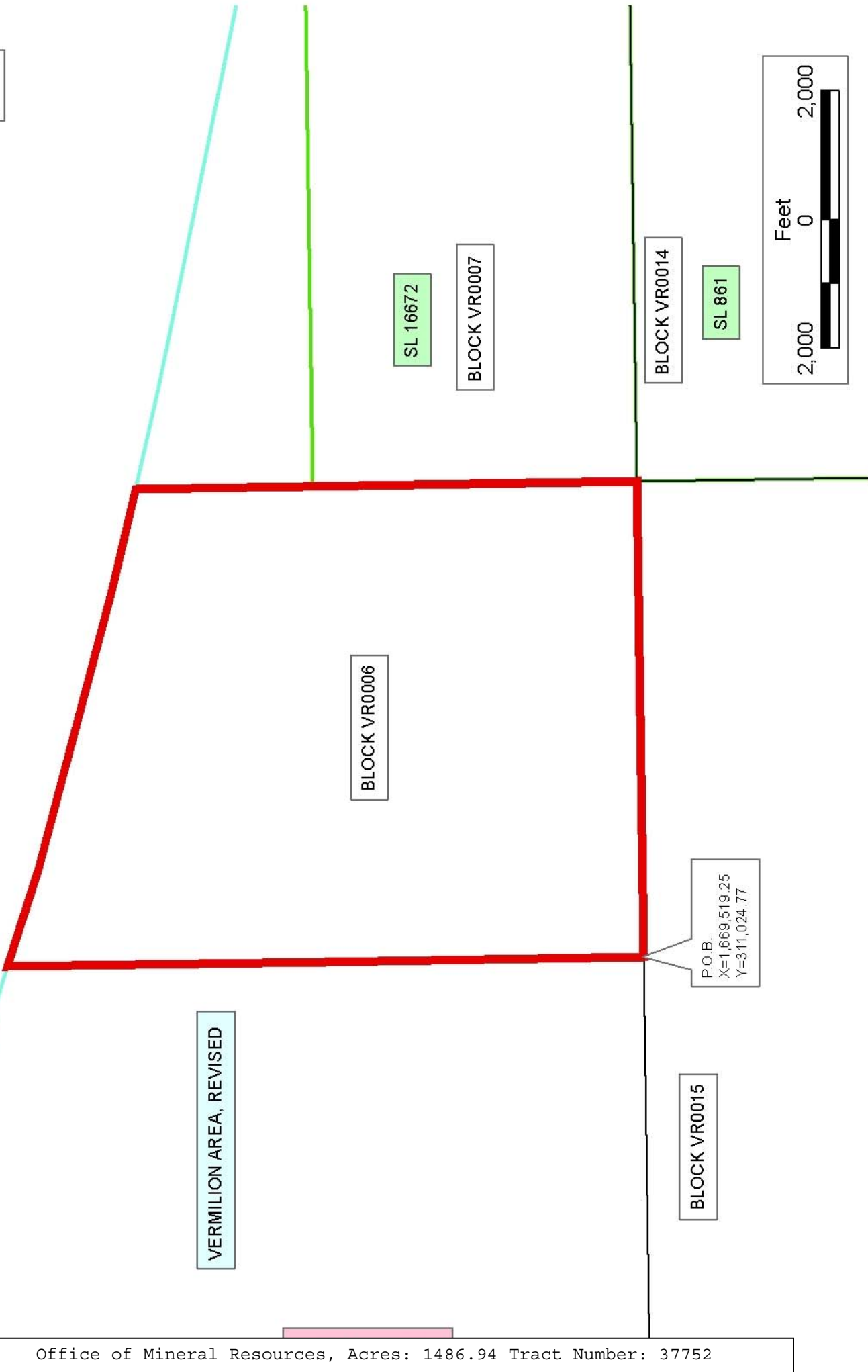
Applicant: WOODLAND PETROLEUM CORPORATION

Bidder	Cash Payment	Price/Acre	Rental	Oil	Gas	Other



VERMILION PARISH

T17S - R1E



VERMILION AREA, REVISED

BLOCK VR0006

BLOCK VR0007

BLOCK VR0014

BLOCK VR0015

SL 16672

SL 861

P.O.B.
X=1,669,519.25
Y=311,024.77

TRACT 37753 - Portion of Block 7, Vermilion Area, Revised, Vermilion Parish, Louisiana

The beds and bottoms of all water bodies belonging to the State of Louisiana located in Block 7, Vermilion Area, Revised, together with any present lands formed by accretion to the shoreline or islands formed therein, located in Vermilion Parish, Louisiana, owned by and not presently under mineral lease as of September 14, 2005, from the State of Louisiana, the geographical area of which is more fully described as follows: Beginning at the Northwest corner of State Lease No. 16672, said point also located on the West line of Block 7, Vermilion Area, Revised having Coordinates of X = 1,676,898.27 and Y = 316,053.41; thence North 2,760.23 feet along the West line of said Block 7 to its Northwest corner located on the Coastline per the Supreme Court Decree dated June 16, 1975 having Coordinates of X = 1,676,898.27 and Y = 318,813.64; Southeasterly on a straight line to a point having Coordinates of X = 1,678,545 and Y = 318,408, Southeasterly on a straight line to a point having Coordinates of X = 1,687,270 and Y = 316,510, Southeasterly on a straight line to a point having Coordinates of X = 1,689,980 and Y = 316,170 and Southeasterly on a straight line to a point on the East line of said Block 7, also being the Northeast corner of State Lease No. 16672 having Coordinates of X = 1,691,656.32 and Y = 316,053.41; thence West 14,758.05 feet along the North line of said State Lease No. 16672 to the point of beginning, containing approximately **398.29 acres**, all as more particularly outlined on a plat on file in the Office of Mineral Resources, Department of Natural Resources. All bearings, distances and coordinates are based on Louisiana Coordinate System of 1927, (North or South Zone).

NOTE: The above description of the Tract nominated for lease has been provided and corrected, where required, exclusively by the nomination party. Any mineral lease selected from this Tract and awarded by the Louisiana State Mineral Board shall be without warranty of any kind, either express, implied, or statutory, including, but not limited to, the implied warranties of merchantability and fitness for a particular purpose. Should the mineral lease awarded by the Louisiana State Mineral Board be subsequently modified, cancelled or abrogated due to the existence of conflicting leases, operating agreements, private claims or other future obligations or conditions which may affect all or any portion of the leased Tract, it shall not relieve the Lessee of the obligation to pay any bonus due thereon to the Louisiana State Mineral Board, nor shall the Louisiana State Mineral Board be obligated to refund any consideration paid by the Lessor prior to such modification, cancellation, or abrogation, including, but not limited to, bonuses, rentals and royalties.

NOTE: The State of Louisiana does hereby reserve, and this lease shall be subject to, the imprescriptible right of surface use in the nature of a servitude in favor of the Department of Natural Resources, including its Offices and Commissions, for the sole purpose of implementing, constructing, servicing and maintaining approved coastal zone management and/or restoration projects. Utilization of any and all rights derived

under this lease by the mineral lessee, its agents, successors or assigns, shall not interfere with nor hinder the reasonable surface use by the Department of Natural Resources, its Offices or Commissions, as herein above reserved.

NOTE: The Department of Wildlife and Fisheries has designated certain areas in the coastal waters of the State of Louisiana as Oyster Seed Bed Areas. The exact location of those Seed Bed Areas must be obtained from the Department of Wildlife and Fisheries and any work done under a mineral lease from the State of Louisiana may necessarily be conducted in conformity with the rules and regulations promulgated by the said Department of Wildlife and Fisheries for Oyster Seed Bed Areas.

Applicant: WOODLAND PETROLEUM CORPORATION

Bidder	Cash Payment	Price/Acre	Rental	Oil	Gas	Other

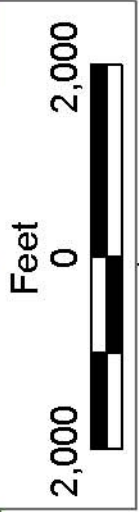


VERMILION PARISH

T17S - R1E

BLOCK VR0008

SL 17058



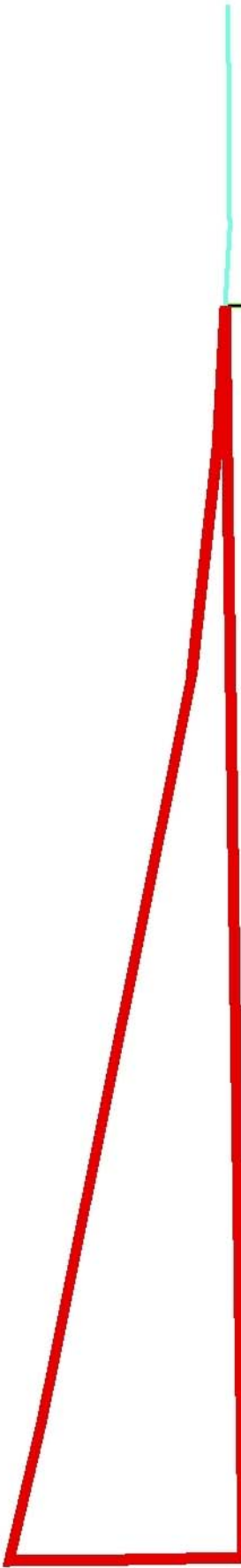
SL 16672

BLOCK VR0007

VERMILION AREA, REVISED

SL 861

P.O.B.
X=1,676,898.27
Y=316,053.41



TRACT 37754 - Portion of Blocks 16, and 5, Vermilion Area, Revised, Vermilion Parish, Louisiana

The beds and bottoms of all water bodies belonging to the State of Louisiana located in Blocks 16, and 5, Vermilion Area, Revised, together with any present lands formed by accretion to the shoreline or islands formed therein, located in Vermilion Parish, Louisiana, owned by and not presently under mineral lease as of September 14, 2005, from the State of Louisiana, the geographical area of which is more fully described as follows: Beginning at the Northeast corner of Block 16, Vermilion Area, Revised having Coordinates of X = 1,662,140.22 and Y = 317,582.82; thence South 13,549.69 feet along the East line of said Block 16 to a point having Coordinates of X = 1,662,140.22 and Y = 304,033.13; thence Northwesterly on a straight line to a point having Coordinates of X = 1,661,678 and Y = 304,151; thence Northwesterly on a straight line to a point having Coordinates of X = 1,659,494 and Y = 304,616; thence Northwesterly along an arc having a radius of 18,240.60 feet and a center at X = 1,663,290 and Y = 322,457 to a point having Coordinates of X = 1,659,476 and Y = 304,620; thence Northwesterly on a straight line to a point having Coordinates of X = 1,658,120 and Y = 304,910; thence Northwesterly along an arc having a radius of 18,240.60 feet and a center at X = 1,658,887 and Y = 323,134 to the Southeast corner of State Lease No. 17728 having Coordinates of X = 1,656,354 and Y = 305,070; thence North 5,000.00 feet along the East line of said State Lease No. 17728 to its Northeast corner, also being the Southeast corner of State Lease No. 17159 having Coordinates of X = 1,656,354.00 and Y = 310,070.00; thence North 3,721.90 feet along the East line of said State Lease No. 17159 to its Northeast corner, also being a point on the Southerly boundary of State Lease No. 3763, as amended having Coordinates of X = 1,656,354.00 and Y = 313,791.90; thence along the boundary of said State Lease No. 3763 the following courses and distances: North 56 degrees 25 minutes 24 seconds East 1,047.66 feet, North 87 degrees 18 minutes 26 seconds East 596.22 feet, North 58 degrees 44 minutes 03 seconds East 1,687.27 feet, North 59 degrees 16 minutes 15 seconds East 1,025.81 feet, North 54 degrees 35 minutes 36 seconds East 780.63 feet, North 50 degrees 50 minutes 26 seconds East 743.10 feet and North 20 degrees 42 minutes 30 seconds East 921.63 feet to the Northeast corner of said State Lease No. 3763, also being the most Southerly Southeast corner of State Lease No. 3762, as amended having Coordinates of X = 1,661,684.76 and Y = 317,582.82; thence along the boundary of said State Lease No. 3762 the following courses and distances: North 20 degrees 42 minutes 27 seconds East 371.16 feet and North 68 degrees 28 minutes 34 seconds East 348.52 feet to the most Easterly Southeast corner of said State Lease No. 3762, also being a point on the East line of Block 5, Vermilion Area, Revised having Coordinates of X = 1,662,140.22 and Y = 318,057.87; thence South 475.05 feet along the East line of said Block 5 to the point of beginning, containing approximately **1,437.34 acres, LESS AND EXCEPT** that portion thereof, if any, lying seaward of the line three nautical miles from the coast line of Louisiana, as said three mile line has been decreed by the Supreme Court of the United States, as determined by a Special Master

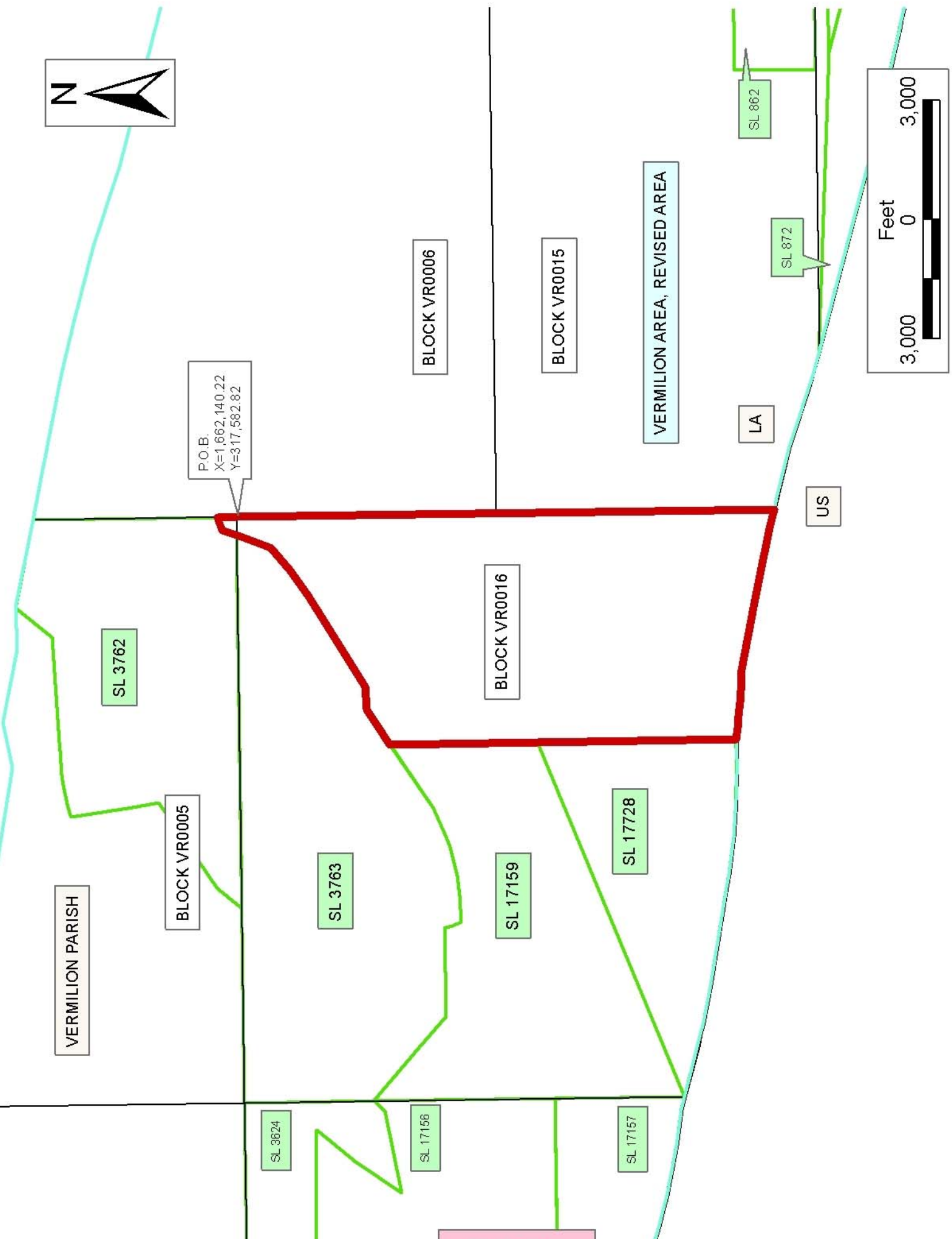
appointed therein, in litigation styled **United States v. State of Louisiana et al No. 9 Original**, in 1975, all as more particularly outlined on a plat in the Office of Mineral Resources, Department of Natural Resources. All bearings, distances and coordinates are based on the Louisiana Coordinate System of 1927, (South Zone).

NOTE: The above description of the Tract nominated for lease has been provided and corrected, where required, exclusively by the nomination party. Any mineral lease selected from this Tract and awarded by the Louisiana State Mineral Board shall be without warranty of any kind, either express, implied, or statutory, including, but not limited to, the implied warranties of merchantability and fitness for a particular purpose. Should the mineral lease awarded by the Louisiana State Mineral Board be subsequently modified, cancelled or abrogated due to the existence of conflicting leases, operating agreements, private claims or other future obligations or conditions which may affect all or any portion of the leased Tract, it shall not relieve the Lessee of the obligation to pay any bonus due thereon to the Louisiana State Mineral Board, nor shall the Louisiana State Mineral Board be obligated to refund any consideration paid by the Lessor prior to such modification, cancellation, or abrogation, including, but not limited to, bonuses, rentals and royalties.

NOTE: The State of Louisiana does hereby reserve, and this lease shall be subject to, the imprescriptible right of surface use in the nature of a servitude in favor of the Department of Natural Resources, including its Offices and Commissions, for the sole purpose of implementing, constructing, servicing and maintaining approved coastal zone management and/or restoration projects. Utilization of any and all rights derived under this lease by the mineral lessee, its agents, successors or assigns, shall not interfere with nor hinder the reasonable surface use by the Department of Natural Resources, its Offices or Commissions, as herein above reserved.

Applicant: WOODLAND PETROLEUM CORPORATION

Bidder	Cash Payment	Price/Acre	Rental	Oil	Gas	Other



TRACT 37755 - Portion of Block 15, Vermilion Area, Revised, Vermilion Parish, Louisiana

The beds and bottoms of all water bodies belonging to the State of Louisiana located in Block 15, Vermilion Area, Revised, together with any present lands formed by accretion to the shoreline or islands formed therein, located in Vermilion Parish, Louisiana, owned by and not presently under mineral lease as of September 14, 2005, from the State of Louisiana, the geographical area of which is more fully described as follows: Beginning at a point on the North line of Block 15, Vermilion Area, Revised having Coordinates of X = 1,669,519.25 and Y = 311,024.77; thence South 8,200.00 feet to a point on the South line of said Block 15 having Coordinates of X = 1,669,519.25 and Y = 302,824.77; thence West 3,397.30 feet along the South line of said Block 15 to a point having Coordinates of X = 1,666,121.95 and Y = 302,824.77; thence Northwesterly on an arc having a radius of 18,240.60 feet and a center at X = 1,671,018 and Y = 320,396 to a point having Coordinates of X = 1,665,216 and Y = 303,103; thence Northwesterly on a straight line to a point having Coordinates of X = 1,663,698 and Y = 303,612; thence Northwesterly on a straight line to a point having Coordinates of X = 1,662,427 and Y = 303,960; thence Northwesterly on a straight line to a point on the West line of said Block 15 having Coordinates of X = 1,662,140.22 and Y = 304,033.13; thence North 6,991.64 feet along the West line of said Block 15 to its Northwest corner having Coordinates of X = 1,662,140.22 and Y = 311,024.77; thence East 7,379.03 feet along the North line of said Block 15 to the point of beginning, containing approximately **1,331.94 acres, LESS AND EXCEPT** that portion thereof, if any, lying seaward of the line three nautical miles from the coast line of Louisiana, as said three mile line has been decreed by the Supreme Court of the United States, as determined by a Special Master appointed therein, in litigation styled **United States v. State of Louisiana et al No. 9 Original**, in 1975, all as more particularly outlined on a plat in the Office of Mineral Resources, Department of Natural Resources. All bearings, distances and coordinates are based on the Louisiana Coordinate System of 1927, (South Zone).

NOTE: The above description of the Tract nominated for lease has been provided and corrected, where required, exclusively by the nomination party. Any mineral lease selected from this Tract and awarded by the Louisiana State Mineral Board shall be without warranty of any kind, either express, implied, or statutory, including, but not limited to, the implied warranties of merchantability and fitness for a particular purpose. Should the mineral lease awarded by the Louisiana State Mineral Board be subsequently modified, cancelled or abrogated due to the existence of conflicting leases, operating agreements, private claims or other future obligations or conditions which may affect all or any portion of the leased Tract, it shall not relieve the Lessee of the obligation to pay any bonus due thereon to the Louisiana State Mineral Board, nor shall the Louisiana State Mineral Board be obligated to refund any consideration paid by the Lessor prior to such modification, cancellation, or abrogation, including, but not limited to, bonuses, rentals and royalties.

NOTE: The State of Louisiana does hereby reserve, and this lease shall be subject to, the imprescriptible right of surface use in the nature of a servitude in favor of the Department of Natural Resources, including its Offices and Commissions, for the sole purpose of implementing, constructing, servicing and maintaining approved coastal zone management and/or restoration projects. Utilization of any and all rights derived under this lease by the mineral lessee, its agents, successors or assigns, shall not interfere with nor hinder the reasonable surface use by the Department of Natural Resources, its Offices or Commissions, as herein above reserved.

Applicant: WOODLAND PETROLEUM CORPORATION

Bidder	Cash Payment	Price/Acre	Rental	Oil	Gas	Other

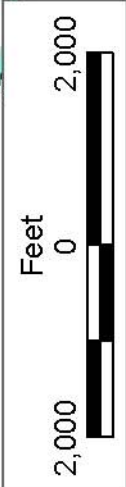


P.O.B.
X=1,669,519.25
Y=311,024.77

SL 862

SL 872

BLOCK VR0026



VERMILION PARISH

BLOCK VR0006

BLOCK VR0015

VERMILION AREA, REVISED

BLOCK VR0016

LA

US

TRACT 37756 - Portion of Block 15, Vermilion Area, Revised, Vermilion Parish, Louisiana

The beds and bottoms of all water bodies belonging to the State of Louisiana located in Block 15, Vermilion Area, Revised, together with any present lands formed by accretion to the shoreline or islands formed therein, located in Vermilion Parish, Louisiana, owned by and not presently under mineral lease as of September 14, 2005, from the State of Louisiana, the geographical area of which is more fully described as follows: Beginning at a point on the North line of Block 15, Vermilion Area, Revised having Coordinates of X = 1,669,519.25 and Y = 311,024.77; thence East 7,379.02 feet along the North line of said Block 15 to its Northeast corner having Coordinates of X = 1,676,898.27 and Y = 311,024.77; thence South 6,150.00 feet along the East line of said Block 15 to a point, also being the Northeast corner of State Lease No. 862, as amended having Coordinates of X = 1,676,898.27 and Y = 304,874.77; thence along the boundary of said State Lease No. 862 the following courses and distances: West 3,689.51 feet and South 2,050.00 feet to the Southwest corner of said State Lease No. 862, also being a point on the South line of said Block 15 having Coordinates of X = 1,673,208.76 and Y = 302,824.77; thence West 3,689.52 feet along the South line of said Block 15 to a point having Coordinates of X = 1,669,519.25 and Y = 302,824.77; thence North 8,200.00 feet to the point of beginning, containing approximately **1,215.44 acres**, all as more particularly outlined on a plat on file in the Office of Mineral Resources, Department of Natural Resources. All bearings, distances and coordinates are based on Louisiana Coordinate System of 1927, (North or South Zone).

NOTE: The above description of the Tract nominated for lease has been provided and corrected, where required, exclusively by the nomination party. Any mineral lease selected from this Tract and awarded by the Louisiana State Mineral Board shall be without warranty of any kind, either express, implied, or statutory, including, but not limited to, the implied warranties of merchantability and fitness for a particular purpose. Should the mineral lease awarded by the Louisiana State Mineral Board be subsequently modified, cancelled or abrogated due to the existence of conflicting leases, operating agreements, private claims or other future obligations or conditions which may affect all or any portion of the leased Tract, it shall not relieve the Lessee of the obligation to pay any bonus due thereon to the Louisiana State Mineral Board, nor shall the Louisiana State Mineral Board be obligated to refund any consideration paid by the Lessor prior to such modification, cancellation, or abrogation, including, but not limited to, bonuses, rentals and royalties.

NOTE: The State of Louisiana does hereby reserve, and this lease shall be subject to, the imprescriptible right of surface use in the nature of a servitude in favor of the Department of Natural Resources, including its Offices and Commissions, for the sole purpose of implementing, constructing, servicing and maintaining approved coastal zone management and/or restoration projects. Utilization of any and all rights derived

under this lease by the mineral lessee, its agents, successors or assigns, shall not interfere with nor hinder the reasonable surface use by the Department of Natural Resources, its Offices or Commissions, as herein above reserved.

Applicant: WOODLAND PETROLEUM CORPORATION

Bidder	Cash Payment	Price/Acre	Rental	Oil	Gas	Other



SL 16672

BLOCK VR0007

SL 861

BLOCK VR0014

SL 3522

BLOCK VR0027



VERMILION AREA, REVISED

VERMILION PARISH

BLOCK VR0006

P.O.B.
X=1,669,519.25
Y=311,024.77

BLOCK VR0015

SL 862

SL 872

BLOCK VR0026

LA

US

TRACT 37757 - Portion of Block 17, Vermilion Area, Revised, Vermilion Parish, Louisiana

The beds and bottoms of all water bodies belonging to the State of Louisiana located in Block 17, Vermilion Area, Revised, together with any present lands formed by accretion to the shoreline or islands formed therein, located in Vermilion Parish, Louisiana, owned by and not presently under mineral lease as of September 14, 2005, from the State of Louisiana, the geographical area of which is more fully described as follows: Beginning at a point on the West line of Block 17, Vermilion Area, Revised, also being the most Westerly Southwest corner of State Lease No. 17156 having Coordinates of X = 1,632,624.12 and Y = 310,950.01; thence along the boundary of said State Lease No. 17156 the following courses and distances: East 7,200.00 feet, South 1,189.51 feet and East 2,136.28 feet to a point on the South line of said State Lease No. 17156, also being the Northwest corner of State Lease No. 17157 having Coordinates of X = 1,641,960.40 and Y = 309,760.50; thence South 38 degrees 27 minutes 42 seconds West 2,393.48 feet along the West line of said State Lease No. 17157 to its Southwest corner having Coordinates of X = 1,640,471.68 and Y = 307,886.35; thence Northwesterly on a straight line to a point having Coordinates of X = 1,636,292 and Y = 308,607; thence Northwesterly on a straight line to a point on the West line of said Block 17 having Coordinates of X = 1,632,624.12 and Y = 309,087.40; thence North 1,862.61 feet along the West line of said Block 17 to the point of beginning, containing approximately **450.80 acres, LESS AND EXCEPT** that portion thereof, if any, lying seaward of the line three nautical miles from the coast line of Louisiana, as said three mile line has been decreed by the Supreme Court of the United States, as determined by a Special Master appointed therein, in litigation styled **United States v. State of Louisiana et al No. 9 Original**, in 1975, all as more particularly outlined on a plat in the Office of Mineral Resources, Department of Natural Resources. All bearings, distances and coordinates are based on the Louisiana Coordinate System of 1927, (South Zone).

NOTE: The above description of the Tract nominated for lease has been provided and corrected, where required, exclusively by the nomination party. Any mineral lease selected from this Tract and awarded by the Louisiana State Mineral Board shall be without warranty of any kind, either express, implied, or statutory, including, but not limited to, the implied warranties of merchantability and fitness for a particular purpose. Should the mineral lease awarded by the Louisiana State Mineral Board be subsequently modified, cancelled or abrogated due to the existence of conflicting leases, operating agreements, private claims or other future obligations or conditions which may affect all or any portion of the leased Tract, it shall not relieve the Lessee of the obligation to pay any bonus due thereon to the Louisiana State Mineral Board, nor shall the Louisiana State Mineral Board be obligated to refund any consideration paid by the Lessor prior to such modification, cancellation, or abrogation, including, but not limited to, bonuses, rentals and royalties.

NOTE: The State of Louisiana does hereby reserve, and this lease shall be subject to, the imprescriptible right of surface use in the nature of a servitude in favor of the Department of Natural Resources, including its Offices and Commissions, for the sole purpose of implementing, constructing, servicing and maintaining approved coastal zone management and/or restoration projects. Utilization of any and all rights derived under this lease by the mineral lessee, its agents, successors or assigns, shall not interfere with nor hinder the reasonable surface use by the Department of Natural Resources, its Offices or Commissions, as herein above reserved.

Applicant: WOODLAND PETROLEUM CORPORATION

Bidder	Cash Payment	Price/Acre	Rental	Oil	Gas	Other

