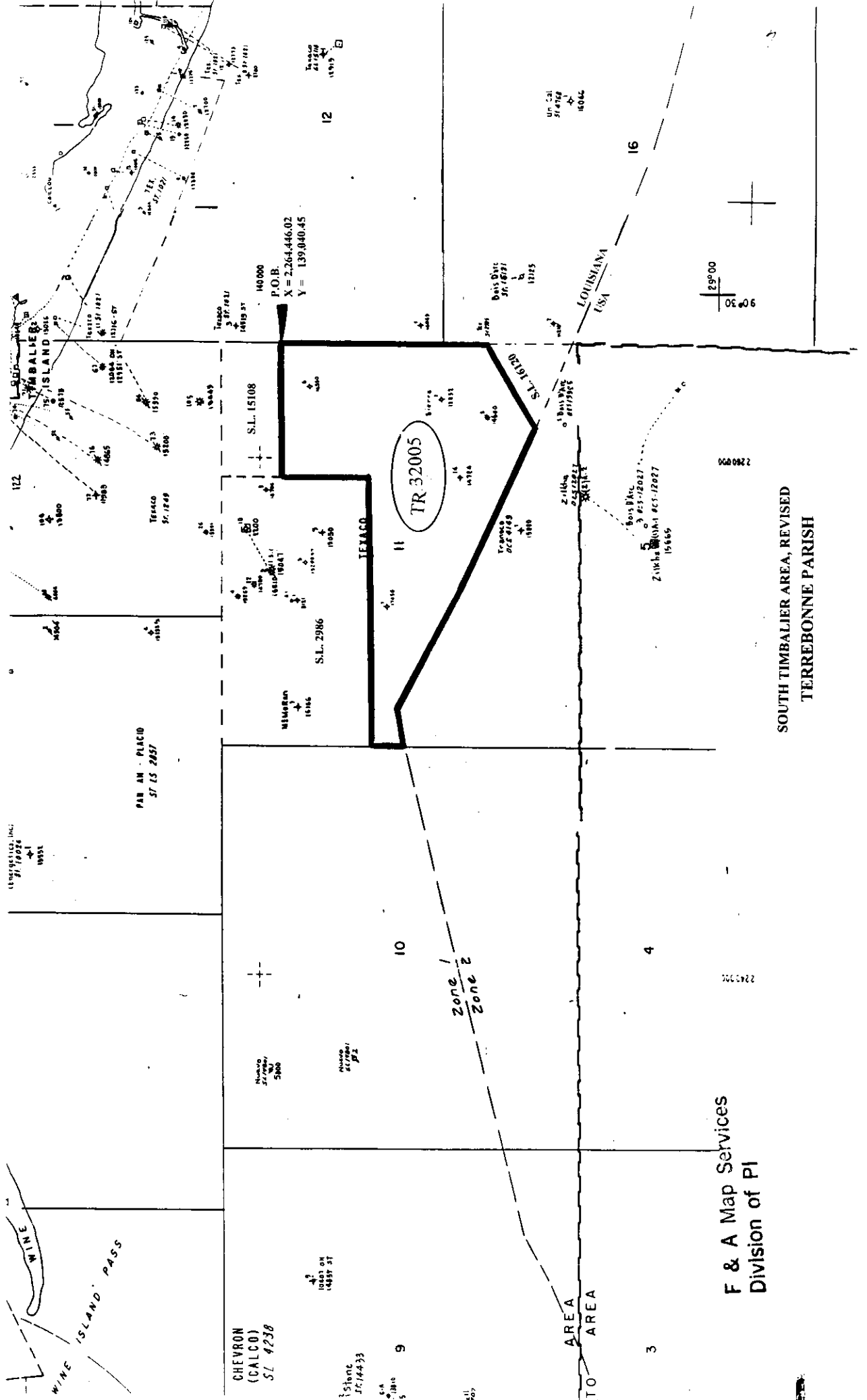


OFFSHORE

TRACTS

NOT TO BE USED WITH A PORTION BID
FOR INFORMATIONAL PURPOSES ONLY

MAP NOT TO SCALE



F & A Map Services
Division of PI

SOUTH TIMBALIER AREA, REVISED
TERREBONNE PARISH

TRACT 32005 - PORTION OF BLOCK 11, SOUTH TIMBALIER AREA, REVISED, Terrebonne Parish, Louisiana

That portion of Block 11, South Timbalier Area, Revised, Terrebonne Parish, Louisiana, belonging to the State of Louisiana and not under mineral lease on September 8, 1999, described as follows: Beginning at a point on the East line of Block 11, being the Southeast corner of State Lease No. 15108, having Coordinates of X = 2,264,446.02 and Y = 139,040.45; thence South 8,150.45 feet to the most Northerly corner of State Lease No. 16120 which lies on said East line of said Block 11 having Coordinates of X = 2,264,446.02 and Y = 130,890.00; thence along a boundary of said State Lease No. 16120 South 61 degrees 00 minutes 43 seconds West 3,656.41 feet to a point having Coordinates of X = 2,261,247.68 and Y = 129,118.00; thence Northwesterly on a straight line to a point having Coordinates of X = 2,256,981 and Y = 131,033; thence Northwesterly on an arc having a radius of 18,240.60 feet and a center at X = 2,264,450 and Y = 147,674 to a point having Coordinates of X = 2,255,335 and Y = 131,874; thence Northwesterly on a straight line to a point having Coordinates of X = 2,251,881 and Y = 133,867; thence Northwesterly on a straight line to a point having Coordinates of X = 2,250,291 and Y = 134,590; thence Southwesterly on a straight line to a point on the West line of said Block 11 having Coordinates of X = 2,248,846.02 and Y = 134,237.33; thence North 1,366.20 feet on the West line of said Block 11 to the Southwest corner of State Lease No. 2986, as amended, having Coordinates of X = 2,248,846.02 and Y = 135,603.53; thence on the boundary of said State Lease No. 2986 the following courses: East 10,400.00 feet and North 3,436.92 feet to the Southwest corner of State Lease No. 15108, having Coordinates of X = 2,259,246.02 and Y = 139,040.45; thence East 5,200.00 feet on the South line of said State Lease No. 15108 to the point of beginning, containing approximately 1,826.74 acres, as shown outlined in red on a plat on file in the Office of Mineral Resources, Department of Natural Resources, **LESS AND EXCEPT** that portion thereof, if any, which is more than three nautical miles from the coast line as determined by the Report of the Special Master in the litigation in the Supreme Court of the United States styled United States v. State of Louisiana et al No. 9 Original, said three mile line as set out in the June, 1975, decree of the Supreme Court. All bearings, distances and coordinates are based on Louisiana Coordinate System of 1927 (South Zone).

NOTE: The State of Louisiana does hereby reserve, and this lease shall be subject to, the imprescriptible right of surface use in the nature of a servitude in favor of the Department of Natural Resources, including its Offices and Commissions, for the sole purpose of implementing, constructing, servicing and maintaining approved coastal zone management and/or restoration projects. Utilization of any and all rights derived under this lease by the mineral lessee, its agents, successors or assigns, shall not interfere with nor hinder the reasonable surface use by the Department of Natural Resources, its Offices or Commissions, as hereinabove reserved.

Applicant: D.G. Andrews

Bidder	Cash Payment	Price/Acre	Rental	Oil	Gas	Other



P.O.B.
 X = 2,264,446.02
 Y = 139,040.45

S.L. 15108

S.L. 2986

TR 32005
 1826.74 + Acc.
 SEPT, 1999

BLK. 10

BLK. 11

BLK. 12

BLK. 4

BLK. 16

LOUISIANA
 USA

TERREBONNE PARISH

S.L. 16120

OFFICIAL COPY
 OFFICE OF MINERAL RESOURCES
 DEPT. OF NATURAL RESOURCES
 DO NOT REMOVE

SOUTH TIMBALIER AREA, REVISED

BLK. 5

2000 Feet

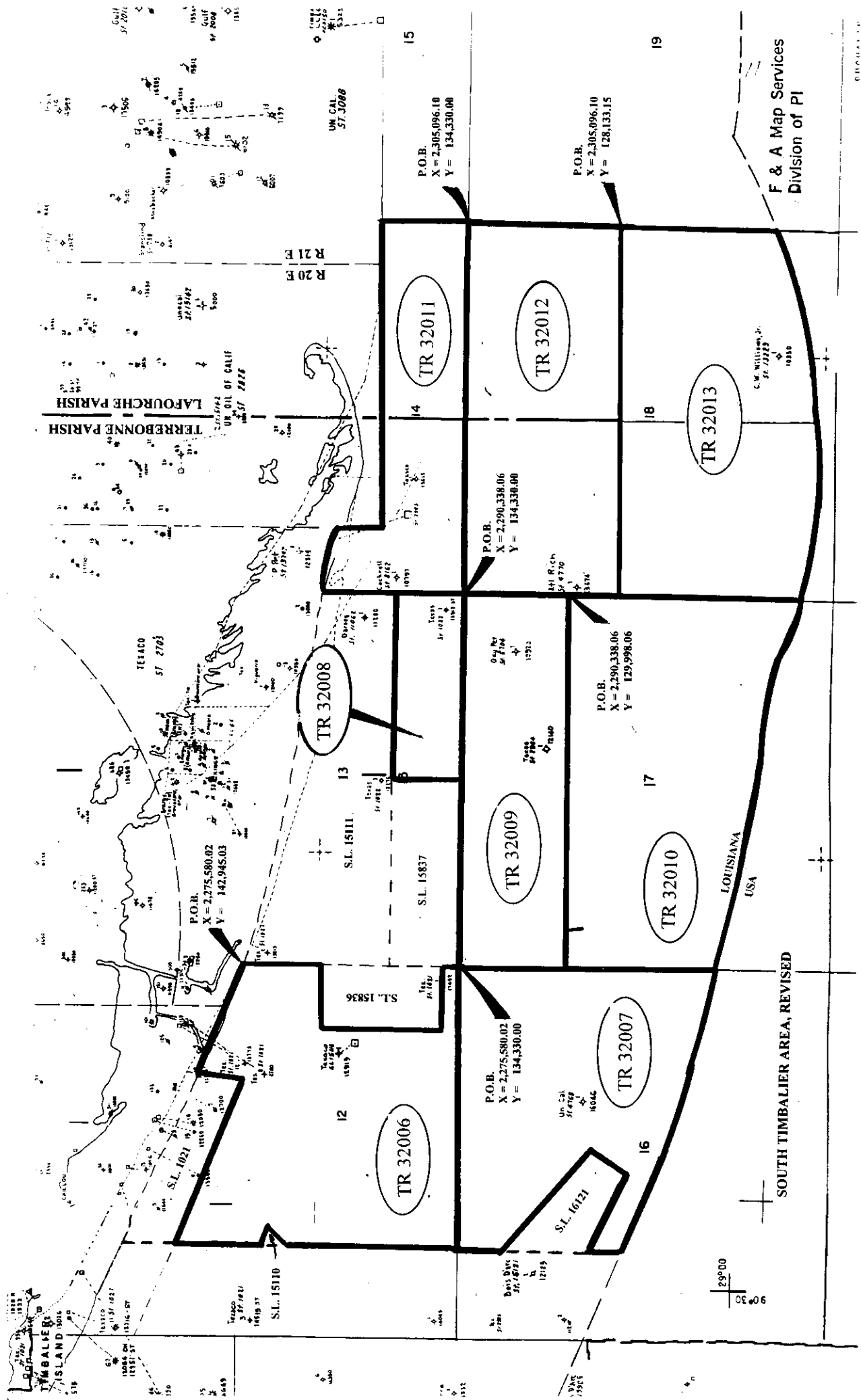
0

2000

BLK. 4

NOT TO BE USED WITH A PORTION BID
FOR INFORMATIONAL PURPOSES ONLY!

MAP NOT TO SCALE



F & A Map Services
Division of PI

PROGRESS

SOUTH TIMBALIER AREA, REVISED

29° 00' 00"

TRACT 32006 - PORTION OF BLOCK 12, SOUTH TIMBALIER AREA, REVISED, Terrebonne Parish, Louisiana

That portion of Block 12, South Timbalier Area, Revised, Terrebonne Parish, Louisiana, belonging to the State of Louisiana and not under mineral lease on September 8, 1999, described as follows: Beginning at the Northeast corner of Block 12, South Timbalier Area, Revised, having Coordinates of X = 2,275,580.02 and Y = 142,945.03; thence South 3,200.00 feet on the East line of said Block 12 to the Northeast corner of State Lease No. 15836 having Coordinates of X = 2,275,580.02 and Y = 139,745.03; thence along the boundary of said State Lease No. 15836 the following courses: West 2,500.00 feet, South 4,800.00 feet and East 2,500.00 feet to its Southeast corner having Coordinates of X = 2,275,580.02 and Y = 134,945.03; thence South 615.03 feet on the East line of said Block 12 to its Southeast corner having Coordinates of X = 2,275,580.02 and Y = 134,330.00; thence West 11,134.00 feet on the South line of said Block 12 to its Southwest corner having Coordinates of X = 2,264,446.02 and Y = 134,330.00; thence North 6,780.91 feet on the West line of said Block 12 to a point on the South boundary of State Lease No. 15110, as amended, having Coordinates of X = 2,264,446.02 and Y = 141,110.91; thence on the boundary of said State Lease No. 15110 the following courses: North 47 degrees 15 minutes 46 seconds East 1,061.94 feet, North 73 degrees 59 minutes 53 seconds West 393.90 feet and North 69 degrees 57 minutes 29 seconds West 427.21 feet to a point on the West line of said Block 12 having Coordinates of X = 2,264,446.02 and Y = 142,086.58; thence North 3,388.42 feet on the West line of said Block 12 to the Southwest corner of State Lease No. 1021, as amended, having Coordinates of X = 2,264,446.02 and Y = 145,475.00; thence on the boundary of said State Lease No. 1021 the following courses: South 68 degrees 21 minutes 41 seconds East 7,050.86 feet and North 06 degrees 43 minutes 38 seconds East 1,801.14 feet to a point on the North line of said Block 12 having Coordinates of X = 2,271,210.98 and Y = 144,663.73; thence Southeasterly on a straight line to a point having Coordinates of X = 2,274,749 and Y = 143,161; thence Southeasterly on a straight line to the point of beginning, containing approximately **2,187.61 acres**, as shown outlined in red on a plat on file in the Office of Mineral Resources, Department of Natural Resources. All bearings, distances and coordinates are based on Louisiana Coordinate System of 1927 (South Zone).

NOTE: The State of Louisiana does hereby reserve, and this lease shall be subject to, the imprescriptible right of surface use in the nature of a servitude in favor of the Department of Natural Resources, including its Offices and Commissions, for the sole purpose of implementing, constructing, servicing and maintaining approved coastal zone management and/or restoration projects. Utilization of any and all rights derived under this lease by the mineral lessee, its agents, successors or assigns, shall not interfere with nor hinder the reasonable surface use by the Department of Natural Resources, its Offices or Commissions, as hereinabove reserved.

Applicant: D.G. Andrews

Bidder	Cash Payment	Price/Acre	Rental	Oil	Gas	Other



P.O.B.
X = 2,275,580.02
Y = 142,945.03

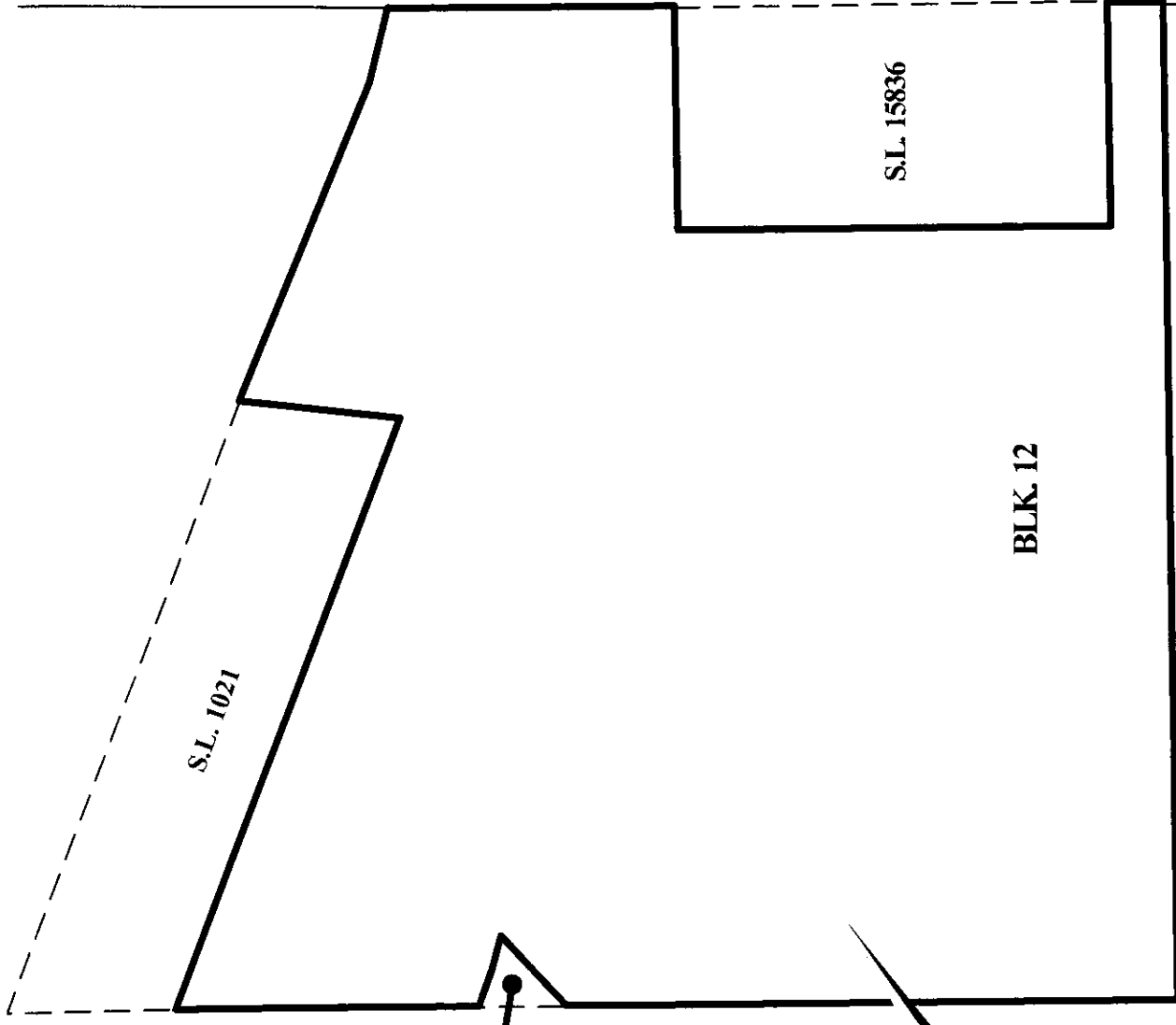
OFFICIAL COPY
OFFICE OF MINERAL RESOURCES
DEPT. OF NATURAL RESOURCES
DO NOT REMOVE

BLK. 13

BLK. 17

0 2000 Feet

2000



TR 32006
2,187.61 +Acs.
SEPT, 1999

S.L. 15110

S.L. 1021

S.L. 15836

BLK. 12

BLK. 16

SOUTH TIMBALIER AREA, REVISED
TERREBONNE PARISH

TRACT 32007 - PORTION OF BLOCK 16, SOUTH TIMBALIER AREA, REVISED, Terrebonne Parish, Louisiana

That portion of Block 16, South Timbalier Area, Revised, Terrebonne Parish, Louisiana, belonging to the State of Louisiana and not under mineral lease on September 8, 1999, described as follows: Beginning at the Northeast corner of Block 16, South Timbalier Area, Revised, having Coordinates of X = 2,275,580.02 and Y = 134,330.00; thence South 10,231.29 feet on the East line of said Block 16 to a point having Coordinates of X = 2,275,580.02 and Y = 124,098.71; thence Northwesterly on a straight line to a point having Coordinates of X = 2,270,161 and Y = 125,507; thence Northwesterly on an arc having a radius of 18,240.60 feet and a center at X = 2,274,749 and Y = 143,161 to a point having Coordinates of X = 2,267,618 and Y = 126,372; thence Northwesterly on a straight line to a point on the West line of said Block 16 having Coordinates of X = 2,264,446.02 and Y = 127,719.25; thence North 1,466.75 feet on said West line of said Block 16 to the Southwest corner of State Lease No. 16121 having Coordinates of X = 2,264,446.02 and Y = 129,186.00; thence along the boundary of said State Lease No. 16121 the following courses: South 63 degrees 07 minutes 43 seconds East 3,515.58 feet, North 33 degrees 54 minutes 47 seconds East 1,639.98 feet and North 49 degrees 05 minutes 33 seconds West 5,360.09 feet to the Northwest corner of said State Lease No. 16121 which lies on said West line of said Block 16 having Coordinates of X = 2,264,446.02 and Y = 132,468.00; thence North 1,862.00 feet to the Northwest corner of said Block 16 having Coordinates of X = 2,264,446.02 and Y = 134,330.00; thence East 11,134.00 feet along the North line of said Block 16 to the point of beginning, containing approximately 1,989.23 acres, as shown outlined in red on a plat on file in the Office of Mineral Resources, Department of Natural Resources, **LESS AND EXCEPT** that portion thereof, if any, which is more than three nautical miles from the coast line as determined by the Report of the Special Master in the litigation in the Supreme Court of the United States styled United States v. State of Louisiana et al No. 9 Original, said three mile line as set out in the June, 1975, decree of the Supreme Court. All bearings, distances and coordinates are based on Louisiana Coordinate System of 1927 (South Zone).

NOTE: The State of Louisiana does hereby reserve, and this lease shall be subject to, the imprescriptible right of surface use in the nature of a servitude in favor of the Department of Natural Resources, including its Offices and Commissions, for the sole purpose of implementing, constructing, servicing and maintaining approved coastal zone management and/or restoration projects. Utilization of any and all rights derived under this lease by the mineral lessee, its agents, successors or assigns, shall not interfere with nor hinder the reasonable surface use by the Department of Natural Resources, its Offices or Commissions, as hereinabove reserved.

Applicant: D.G. Andrews

Bidder	Cash Payment	Price/Acre	Rental	Oil	Gas	Other



P.O.B.
X = 2,275,580.02
Y = 134,330.00

BLK. 12

BLK. 13

BLK. 16

BLK. 17

S.L. 16121

LOUISIANA
USA

OFFICIAL COPY
OFFICE OF MINERAL RESOURCES
DEPT. OF NATURAL RESOURCES
DO NOT REMOVE

TERREBONNE PARISH

TR 32007
1989.23 + Acs.
SEPT, 1999

SOUTH TIMBALIER AREA, REVISED

2000 0 2000 Feet

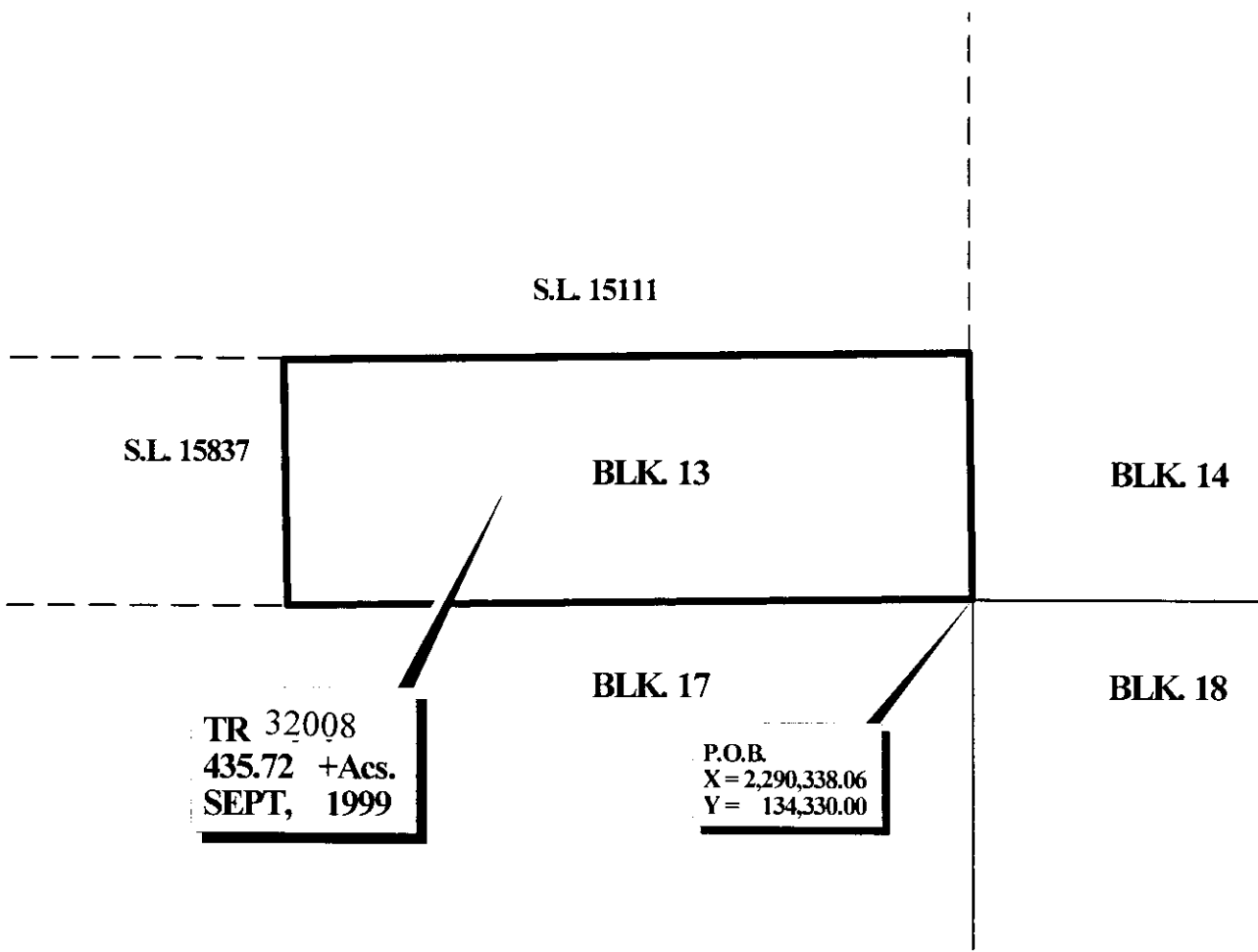
TRACT 32008 - PORTION OF BLOCK 13, SOUTH TIMBALIER AREA, REVISED, Terrebonne Parish, Louisiana

That portion of Block 13, South Timbalier Area, Revised, Terrebonne Parish, Louisiana, belonging to the State of Louisiana and not under mineral lease on September 8, 1999, described as follows: Beginning at the Southeast corner of Block 13, South Timbalier Area, Revised, having Coordinates of X = 2,290,338.06 and Y = 134,330.00; thence West 7,258.04 feet on the South line of said Block 13 to the Southeast corner of State Lease No. 15837; thence North 2,615.03 feet on the East line of said State Lease No. 15837 to its Northeast corner on the South line of State Lease No. 15111 having Coordinates of X = 2,283,080.02 and Y = 136,945.03; thence East 7,258.04 feet on the South line of said State Lease No. 15111 to its Southeast corner on the East line of said Block 13; thence South 2,615.03 feet on the East line of said Block 13 to the point of beginning, containing approximately **435.72 acres**, as shown outlined in red on a plat on file in the Office of Mineral Resources, Department of Natural Resources. All bearings, distances and coordinates are based on Louisiana Coordinate System of 1927 (South Zone).

NOTE: The State of Louisiana does hereby reserve, and this lease shall be subject to, the imprescriptible right of surface use in the nature of a servitude in favor of the Department of Natural Resources, including its Offices and Commissions, for the sole purpose of implementing, constructing, servicing and maintaining approved coastal zone management and/or restoration projects. Utilization of any and all rights derived under this lease by the mineral lessee, its agents, successors or assigns, shall not interfere with nor hinder the reasonable surface use by the Department of Natural Resources, its Offices or Commissions, as hereinabove reserved.

Applicant: D.G.Andrews

Bidder	Cash Payment	Price/Acre	Rental	Oil	Gas	Other

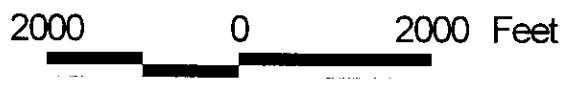


TR 32008
435.72 +Acs.
SEPT, 1999

P.O.B.
X = 2,290,338.06
Y = 134,330.00

OFFICIAL COPY
OFFICE OF MINERAL RESOURCES
DEPT. OF NATURAL RESOURCES
DO NOT REMOVE

**SOUTH TIMBALIER AREA, REVISED
TERREBONNE PARISH**



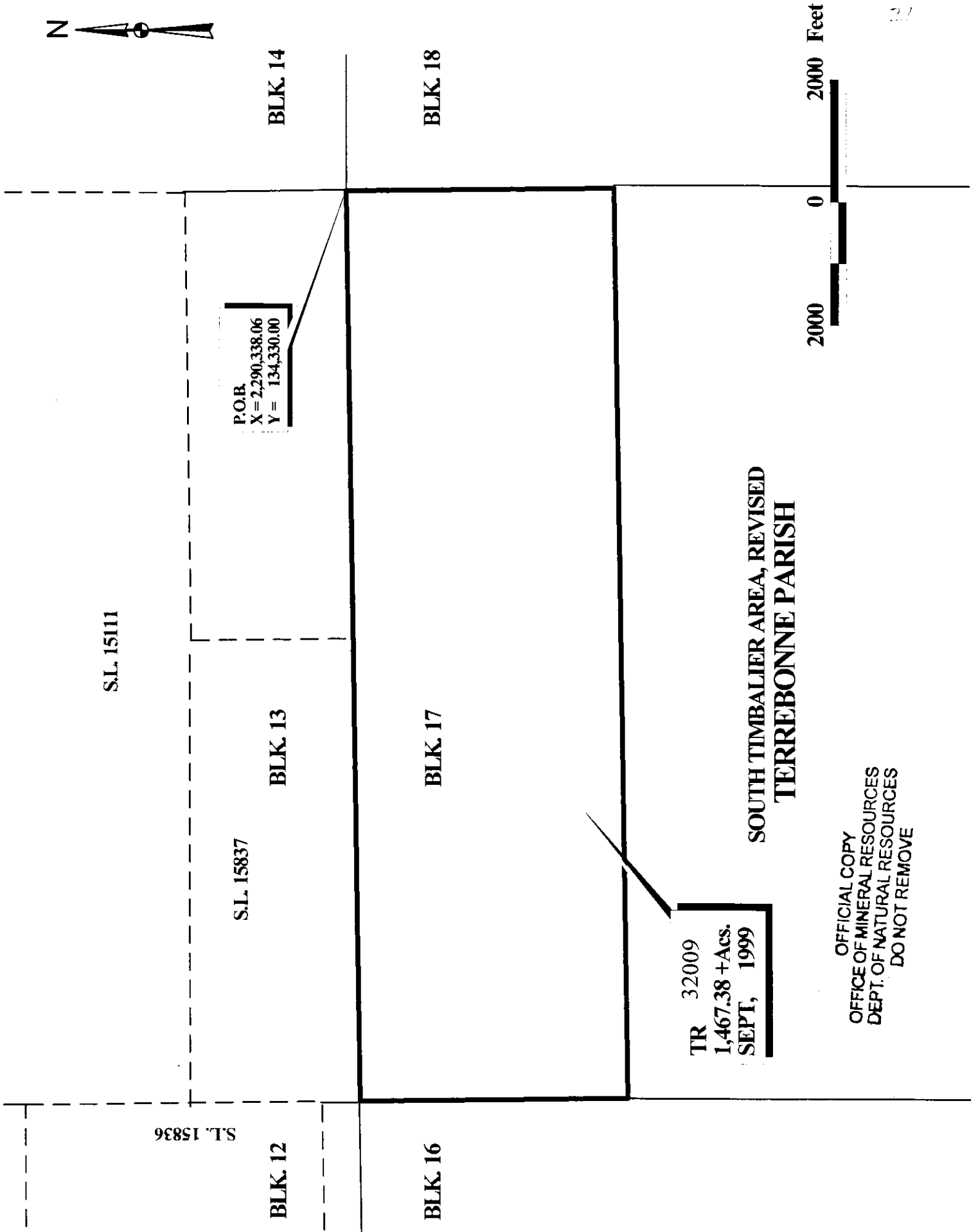
TRACT 32009 - PORTION OF BLOCK 17, SOUTH TIMBALIER AREA, REVISED, Terrebonne Parish, Louisiana

That portion of Block 17, South Timbalier Area, Terrebonne Parish, Louisiana, belonging to the State of Louisiana and not under mineral lease on September 8, 1999, described as follows: Beginning at the Northeast corner of Block 17, South Timbalier Area, Revised, having Coordinates of X = 2,290,338.06 and Y = 134,330.00, said point being the point of beginning; thence South a distance of 4,331.14 feet to a point having Coordinates of X = 2,290,338.06 and Y = 129,998.86; thence West a distance of 14,758.04 feet to a point having Coordinates of X = 2,275,580.02 and Y = 129,998.86; thence North a distance of 4,331.14 feet to a point having Coordinates of X = 2,275,580.02 and Y = 134,330.00; thence East a distance of 14,758.04 feet to the point of beginning and containing approximately 1,467.38 acres, as shown outlined in red on a plat on file in the Office of Mineral Resources, Department of Natural Resources. All bearings, distances and coordinates are based on Louisiana Coordinate System of 1927 (South Zone).

NOTE: The State of Louisiana does hereby reserve, and this lease shall be subject to, the imprescriptible right of surface use in the nature of a servitude in favor of the Department of Natural Resources, including its Offices and Commissions, for the sole purpose of implementing, constructing, servicing and maintaining approved coastal zone management and/or restoration projects. Utilization of any and all rights derived under this lease by the mineral lessee, its agents, successors or assigns, shall not interfere with nor hinder the reasonable surface use by the Department of Natural Resources, its Offices or Commissions, as hereinabove reserved.

Applicant: D.G. Andrews

Bidder	Cash Payment	Price/Acre	Rental	Oil	Gas	Other



S.L. 15111

S.L. 15837

S.L. 15836

BLK. 14

BLK. 13

BLK. 12

BLK. 18

BLK. 17

BLK. 16

P.O.B.
X = 2,290,338.06
Y = 134,330.00

TR 32009
1,467.38 + Ac.
SEPT, 1999

**SOUTH TIMBALIER AREA, REVISED
TERREBONNE PARISH**

2000 0 2000 Feet

OFFICIAL COPY
OFFICE OF MINERAL RESOURCES
DEPT. OF NATURAL RESOURCES
DO NOT REMOVE

TRACT 32010 - PORTION OF BLOCK 17, SOUTH TIMBALIER AREA, REVISED, Terrebonne Parish, Louisiana

That portion of Block 17, South Timbalier Area, Revised, Terrebonne Parish, Louisiana, belonging to the State of Louisiana and not under mineral lease on September 8, 1999, described as follows: Beginning at a point on the East line of Block 17 having Coordinates of X = 2,290,338.06 and Y = 129,998.06, said point being the point of beginning; thence South a distance of 9,044.95 feet to a point on the 3 Mile Line of the June 1975 Decree of the Supreme Court, said point having Coordinates of X = 2,290,338.06 and Y = 120,953.91; thence Northwesterly on an arc having a radius of 18,240.60 feet and a center at X = 2,295,144 and Y = 138,550 to a point having Coordinates of X = 2,288,532 and Y = 121,550; thence North 68 degrees 44 minutes 45 seconds West a distance of 816.54 feet to a point having Coordinates of X = 2,287,771 and Y = 121,846; thence Northwesterly on an arc having a radius of 18,240.60 feet and a center at X = 2,294,383 and Y = 138,846 to a point having Coordinates of X = 2,287,412 and Y = 121,990; thence North 82 degrees 52 minutes 45 seconds West a distance of 3,299.45 feet to a point having Coordinates of X = 2,284,138 and Y = 122,399; thence Northwesterly on an arc having a radius of 18,240.60 feet and a center at X = 2,286,402 and Y = 140,499 to a point having Coordinates of X = 2,283,007 and Y = 122,577; thence North 79 degrees 16 minutes 26 seconds West a distance of 5,292.47 feet to a point having Coordinates of X = 2,277,807 and Y = 123,562; thence Northwesterly on an arc having a radius of 18,240.60 feet and a center at X = 2,281,202 and Y = 141,484 to a point having Coordinates of X = 2,276,614 and Y = 123,830; thence North 75 degrees 25 minutes 56 seconds West a distance of 1,068.33 feet to a point having Coordinates of X = 2,275,580.02 and Y = 124,098.71; thence North a distance of 5,900.15 feet to a point having Coordinates of X = 2,275,580.02 and Y = 129,998.86; thence East a distance of 14,758.04 feet to the point of beginning, containing approximately **2,500.00 acres**, as shown outlined in red on a plat on file in the Office of Mineral Resources, Department of Natural Resources, **LESS AND EXCEPT** that portion thereof, if any, which is more than three nautical miles from the coast line as determined by the Report of the Special Master in the litigation in the Supreme Court of the United States styled United States v. State of Louisiana et al No. 9 Original, said three mile line as set out in the June, 1975, decree of the Supreme Court. All bearings, distances and coordinates are based on Louisiana Coordinate System of 1927 (South Zone).

NOTE: The State of Louisiana does hereby reserve, and this lease shall be subject to, the imprescriptible right of surface use in the nature of a servitude in favor of the Department of Natural Resources, including its Offices and Commissions, for the sole purpose of implementing, constructing, servicing and maintaining approved coastal zone management and/or restoration projects. Utilization of any and all rights derived under this lease by the mineral lessee, its agents, successors or assigns, shall not interfere with nor hinder the reasonable surface use by the Department of Natural Resources, its Offices or Commissions, as hereinabove reserved.

Applicant: D.G. Andrews

Bidder	Cash Payment	Price/Acre	Rental	Oil	Gas	Other



P.O.B.
X = 2,290,338.06
Y = 129,998.06

BLK. 18

BLK.17

BLK. 16

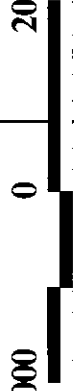
LOUISIANA
USA

TERREBONNE PARISH

TR 32010
2500.00 +Acs.
SEPT, 1999

SOUTH TIMBALIER AREA, REVISED

2000 0 2000 Feet



OFFICIAL COPY
OFFICE OF MINERAL RESOURCES
DEPT. OF NATURAL RESOURCES
DO NOT REMOVE

TRACT 32011 - PORTION OF BLOCK 14, SOUTH TIMBALIER AREA, REVISED, Lafourche and Terrebonne Parishes, Louisiana

That portion of Block 14, South Timbalier Area, Revised, Lafourche and Terrebonne Parishes, Louisiana, belonging to the State of Louisiana and not under mineral lease on September 8, 1999, described as follows: Beginning at the Southwest corner of Block 14, South Timbalier Area, having Coordinates of X = 2,290,338.06 and Y = 134,330.00, said point being the point of beginning; thence North a distance of 5,676.70 feet to a point on the shoreline by 1975 decree of the Supreme Court, said point having Coordinates of X = 2,290,338.06 and Y = 140,006.70; thence South 82 degrees 52 minutes 16 seconds East a distance of 1,174.02 feet to a point having Coordinates of X = 2,291,503 and Y = 139,861; thence South 77 degrees 33 minutes 22 seconds East a distance of 1,384.27 feet to a point having Coordinates of X = 2,292,854.75 and Y = 139,562.71; thence South 00 degrees 29 minutes 19 seconds East a distance of 1,941.06 feet to a point having Coordinates of X = 2,292,871.31 and Y = 137,621.72; thence North 89 degrees 30 minutes 40 seconds East a distance of 12,225.24 feet to a point having Coordinates of X = 2,305,096.10 and Y = 137,726.01; thence South a distance of 3,396.01 feet to a point having Coordinates of X = 2,305,096.10 and Y = 134,330.00; thence West a distance of 14,758.04 feet to the point of beginning, containing approximately **1,256.92 acres**, as shown outlined in red on a plat on file in the Office of Mineral Resources, Department of Natural Resources. All bearings, distances and coordinates are based on Louisiana Coordinate System of 1927 (South Zone).

NOTE: The State of Louisiana does hereby reserve, and this lease shall be subject to, the imprescriptible right of surface use in the nature of a servitude in favor of the Department of Natural Resources, including its Offices and Commissions, for the sole purpose of implementing, constructing, servicing and maintaining approved coastal zone management and/or restoration projects. Utilization of any and all rights derived under this lease by the mineral lessee, its agents, successors or assigns, shall not interfere with nor hinder the reasonable surface use by the Department of Natural Resources, its Offices or Commissions, as hereinabove reserved.

Applicant: D.G. Andrews

Bidder	Cash Payment	Price/Acre	Rental	Oil	Gas	Other



TR 32011
1256.92 + ACS.
SEPT, 1999

P.O.B.
X = 2,290,338.06
Y = 134,330.00

S.L. 15111

BLK. 13

BLK. 14

BLK. 15

BLK. 17

BLK. 18

BLK. 19

TERREBONNE PARISH
LAFOURCHE PARISH

SOUTH TIMBALIER AREA, REVISED

OFFICIAL COPY
OFFICE OF MINERAL RESOURCES
DEPT. OF NATURAL RESOURCES
DO NOT REMOVE

2000

0

2000 Feet

26

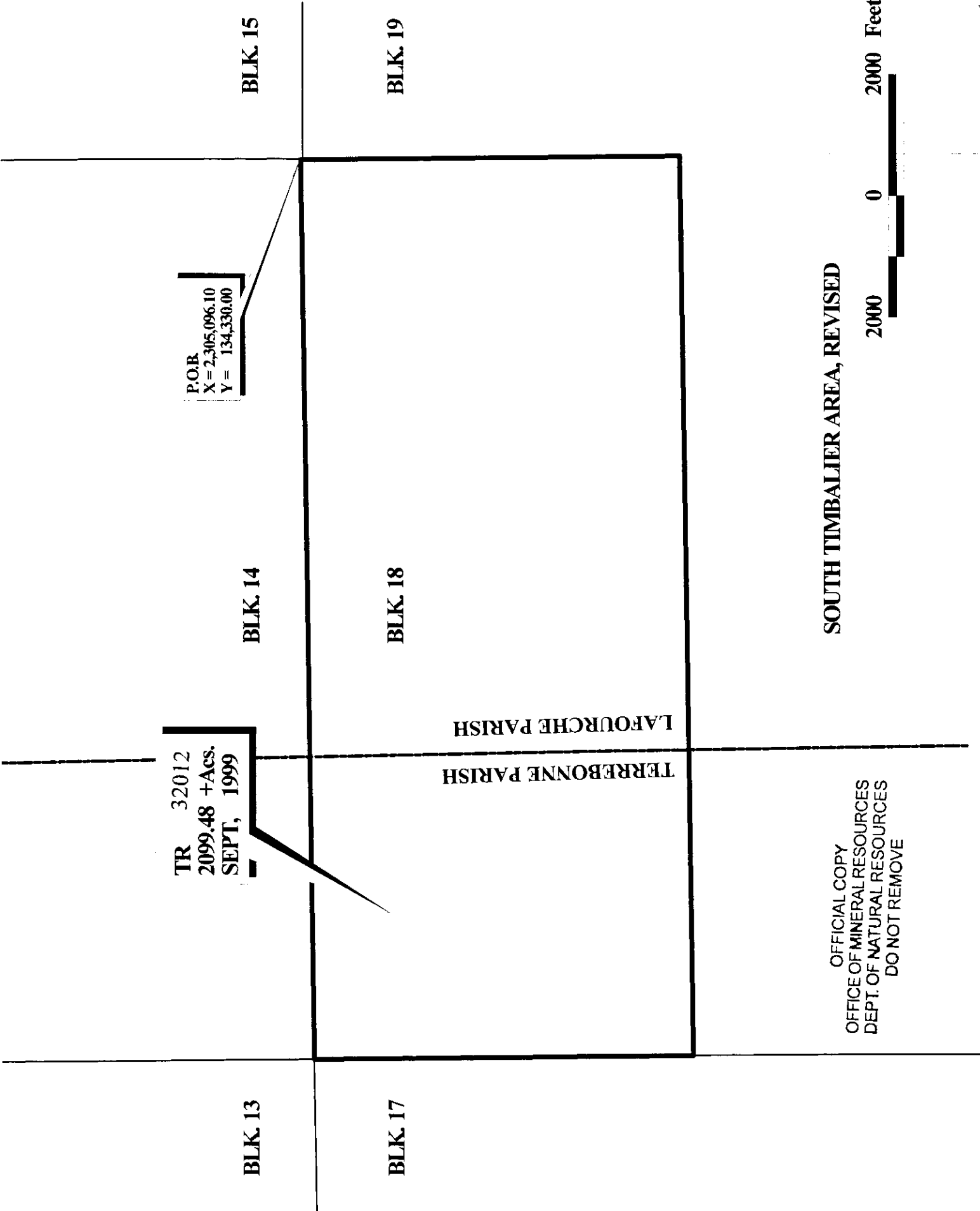
TRACT 32012 - PORTION OF BLOCK 18, SOUTH TIMBALIER AREA, REVISED, Lafourche and Terrebonne Parishes, Louisiana

That portion of Block 18, South Timbalier Area, Revised, Lafourche and Terrebonne Parishes, Louisiana, belonging to the State of Louisiana and not under mineral lease on September 8, 1999, described as follows: Beginning at the Northeast corner of Block 18, South Timbalier Area, having Coordinates of X = 2,305,096.10 and Y = 134,330.00, said point being the point of beginning; thence South a distance of 6,196.85 feet to a point having Coordinates of X = 2,305,096.10 and Y = 128,133.15; thence West a distance of 14,758.04 feet to a point having Coordinates of X = 2,290,338.06 and Y = 128,133.15; thence North a distance of 6,196.85 feet to a point having Coordinates of X = 2,290,338.06 and Y = 134,330.00; thence East at a distance of 14,758.04 feet to the point of beginning, containing approximately **2,099.48 acres**, as shown outlined in red on a plat on file in the Office of Mineral Resources, Department of Natural Resources. All bearings, distances and coordinates are based on Louisiana Coordinate System of 1927 (South Zone).

NOTE: The State of Louisiana does hereby reserve, and this lease shall be subject to, the imprescriptible right of surface use in the nature of a servitude in favor of the Department of Natural Resources, including its Offices and Commissions, for the sole purpose of implementing, constructing, servicing and maintaining approved coastal zone management and/or restoration projects. Utilization of any and all rights derived under this lease by the mineral lessee, its agents, successors or assigns, shall not interfere with nor hinder the reasonable surface use by the Department of Natural Resources, its Offices or Commissions, as hereinabove reserved.

Applicant: D.G. Andrews

Bidder	Cash Payment	Price/Acre	Rental	Oil	Gas	Other



TR 32012
2099.48 +Acs.
SEPT, 1999

P.O.B
X = 2,305,096.10
Y = 134,330.00

BLK. 13

BLK. 14

BLK. 15

BLK. 17

BLK. 18

BLK. 19

TERREBONNE PARISH
LAFOURCHE PARISH

OFFICIAL COPY
OFFICE OF MINERAL RESOURCES
DEPT. OF NATURAL RESOURCES
DO NOT REMOVE

SOUTH TIMBALIER AREA, REVISED

2000 0 2000 Feet

TRACT 32013 - PORTION OF BLOCK 18, SOUTH TIMBALIER AREA, REVISED, Lafourche and Terrebonne Parishes, Louisiana

That portion of Block 18, South Timbalier Area, Revised, Lafourche and Terrebonne Parishes, Louisiana, belonging to the State of Louisiana and not under mineral lease on September 8, 1999, described as follows: Beginning at a point having Coordinates of X = 2,305,096.10 and Y = 128,133.15, said point being the point of beginning; thence South a distance of 6,081.04 feet to a point on the 3 Mile Line of the June 1975 Decree of the Supreme Court, said point having Coordinates of X = 2,305,096.10 and Y = 122,052.11; thence Southwesterly on an arc having a radius of 18,240.60 feet and a center at X = 2,298,538.00 and Y = 139,073.00 to a point having Coordinates of X = 2,302,489 and Y = 121,265; thence South 77 degrees 29 minutes 26 seconds West a distance of 2,557.72 feet to a point having Coordinates of X = 2,299,992 and Y = 120,711; thence Southwesterly on an arc having a radius of 18,240.60 feet and a center at X = 2,296,041 and Y = 138,519 to a point having Coordinates of X = 2,295,411 and Y = 120,289; thence North 88 degrees 01 minutes 14 seconds West a distance of 897.54 feet to a point having Coordinates of X = 2,294,514 and Y = 120,320; thence Northwesterly on an arc having a radius of 18,240.60 feet and a center of X = 2,295,144 and Y = 138,550 to a point having Coordinates of X = 2,290,338.06 and Y = 120,953.91; thence North a distance of 7,179.24 feet to a point having Coordinates of X = 2,290,338.06 and Y = 128,133.15; thence East a distance of 14,758.04 feet to the point of beginning, containing approximately **2,500.00 acres**, as shown outlined in red on a plat on file in the Office of Mineral Resources, Department of Natural Resources, **LESS AND EXCEPT** that portion thereof, if any, which is more than three nautical miles from the coast line as determined by the Report of the Special Master in the litigation in the Supreme Court of the United States styled United States v. State of Louisiana et al No. 9 Original, said three mile line as set out in the June, 1975, decree of the Supreme Court. All bearings, distances and coordinates are based on Louisiana Coordinate System of 1927 (South Zone).

NOTE: The State of Louisiana does hereby reserve, and this lease shall be subject to, the imprescriptible right of surface use in the nature of a servitude in favor of the Department of Natural Resources, including its Offices and Commissions, for the sole purpose of implementing, constructing, servicing and maintaining approved coastal zone management and/or restoration projects. Utilization of any and all rights derived under this lease by the mineral lessee, its agents, successors or assigns, shall not interfere with nor hinder the reasonable surface use by the Department of Natural Resources, its Offices or Commissions, as hereinabove reserved.

Applicant: D.G. Andrews

Bidder	Cash Payment	Price/Acre	Rental	Oil	Gas	Other



BLK. 19

BLK. 18

TERREBONE PARISH
LAFORCHE PARISH

BLK. 17

LOUISIANA
USA

P.O.B.
X = 2,305,096.10
Y = 128,133.15

TR 32013
2500.00 + Acs.
SEPT, 1999

2000 0 2000 Feet

SOUTH TIMBALIER AREA, REVISED

OFFICIAL COPY
OFFICE OF MINERAL RESOURCES
DEPT. OF NATURAL RESOURCES
DO NOT REMOVE