

**TRACT 41110 - Cameron Parish, Louisiana**

A portion of all State owned lands, including high and marsh lands and land now or formerly constituting the beds and bottoms of any water body, within the boundaries of the Rockefeller Wildlife Refuge and Game Preserve, not presently under mineral lease by the State of Louisiana on August 12, 2009, situated in Cameron Parish, Louisiana, and described as follows: Beginning at a point lying within the Rockefeller Wildlife Refuge having Coordinates of X = 1,564,100.56 and Y = 377,306.92; thence Easterly approximately 7,057 feet to the Northernmost Northwest corner of State Lease No. 2038, as amended; thence along the boundary of said State Lease No. 2038 the following: Southerly approximately 2,636 feet to a corner; Westerly approximately 2,262 feet to a corner; Southerly approximately 1,320 feet to a corner; Westerly approximately 703 feet to a corner and Southerly approximately 3,232 feet to a point of intersection with an East-West line having a Coordinate of Y = 370,157.03; thence West approximately 4,000 feet along said line to a point having Coordinates of X = 1,564,100.56 and Y = 370,157.03; thence North 7,149.89 feet to the point of beginning, **LESS AND EXCEPT** that portion, if any, of the above described tract which may lie outside of the boundary of the Rockefeller Wildlife Refuge, **ALSO LESS AND EXCEPT** that portion, if any, of State Lease No. 2038, as amended, which may lie within the above described tract, containing approximately **863 acres**, all as more particularly outlined on a plat on file in the Office of Mineral Resources, Department of Natural Resources. All bearings, distances and coordinates are based on Louisiana Coordinate System of 1927, (South Zone).

NOTE: The above description of the Tract nominated for lease has been provided and corrected, where required, exclusively by the nomination party. Any mineral lease selected from this Tract and awarded by the Louisiana State Mineral Board shall be without warranty of any kind, either express, implied, or statutory, including, but not limited to, the implied warranties of merchantability and fitness for a particular purpose. Should the mineral lease awarded by the Louisiana State Mineral Board be subsequently modified, cancelled or abrogated due to the existence of conflicting leases, operating agreements, private claims or other future obligations or conditions which may affect all or any portion of the leased Tract, it shall not relieve the Lessee of the obligation to pay any bonus due thereon to the Louisiana State Mineral Board, nor shall the Louisiana State Mineral Board be obligated to refund any consideration paid by the Lessor prior to such modification, cancellation, or abrogation, including, but not limited to, bonuses, rentals and royalties.

NOTE: This tract is located in The Rockefeller Wildlife Refuge and Game Preserve Area under the jurisdiction of the Louisiana Department of Wildlife and Fisheries which has promulgated rules and regulations for the protection of game and wildlife on the aforesaid Tract and, therefore, shall be subject to said rules and regulations, a copy of which shall be attached to the mineral lease. In addition to the specific rules and

regulations applicable, the following shall apply regarding operations under this mineral lease:

1. Compliance with the Rockefeller mineral regulations shall be required.
2. No surface activities will be allowed in the vicinity of the Headquarters and associated facilities without written authorization from the Department.
3. Board road access will be required when feasible as determined by the Department.
4. In the event that board road access is not feasible, existing canals and waterways will be utilized to access proposed well locations. A maximum of 350 feet of new canal dredging will be allowed for individual well locations.
5. Compensatory mitigation will be required for unavoidable wetland losses.
6. No discharges will be allowed, including produced waters and drilling fluids. A containerized closed loop system will be required.
7. Seasonal restrictions may be imposed within specific management units dependent upon wildlife population levels.
8. A minimum bonus of \$350.00 per acre and a minimum royalty of 25% will be required.
9. Prior to submitting applications for wetland permits to Federal and State permitting agencies the lease holder shall coordinate project details with the Louisiana Department. Contact person for the Department will be Mike Windham at (504) 284-5268.

NOTE: The State of Louisiana does hereby reserve, and this lease shall be subject to, the imprescriptible right of surface use in the nature of a servitude in favor of the Department of Natural Resources, including its Offices and Commissions, for the sole purpose of implementing, constructing, servicing and maintaining approved coastal zone management and/or restoration projects. Utilization of any and all rights derived under this lease by the mineral lessee, its agents, successors or assigns, shall not interfere with nor hinder the reasonable surface use by the Department of Natural Resources, its Offices or Commissions, as herein above reserved.

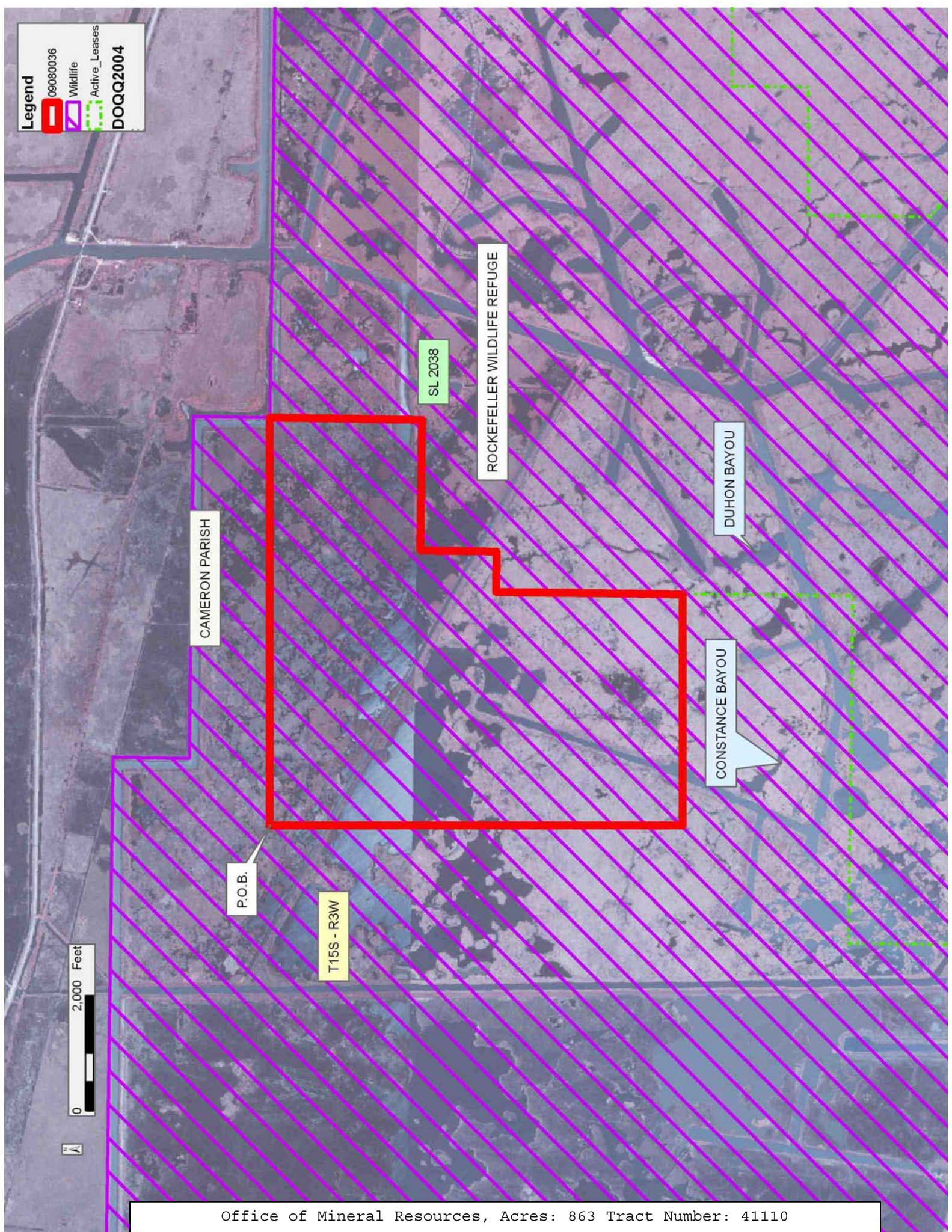
Applicant: THEOPHILUS OIL, GAS & LAND SERVICES, LLC

Bidder	Cash Payment	Price/Acre	Rental	Oil	Gas	Other

**Legend**

- 09080036
- Wildlife
- Active\_Leases

**DOQQ2004**



CAMERON PARISH

ROCKEFELLER WILDLIFE REFUGE

DUHON BAYOU

CONSTANCE BAYOU

P.O.B.

T15S - R3W

SL 2038



**TRACT 41111 - Cameron Parish, Louisiana**

A portion of all State owned lands, including high and marsh lands and land now or formerly constituting the beds and bottoms of any water body, within the boundaries of the Rockefeller Wildlife Refuge and Game Preserve, not presently under mineral lease by the State of Louisiana on August 12, 2009, situated in Cameron Parish, Louisiana, and described as follows: Beginning at a point lying within the Rockefeller Wildlife Refuge having Coordinates of X = 1,567,298.19 and Y = 361,544.06; thence Northerly approximately 2,614 feet to the Southernmost Southwest corner of State Lease No. 2038, as amended; thence Easterly approximately 7,309 feet along the South boundary of said State Lease No. 2038 to its Southernmost Southeast corner, also being the Southwest corner of State Lease No. 18346; thence along the boundary of said State Lease No. 18346 the following: Easterly approximately 1,763 feet to its Southeast corner having Coordinates of X = 1,576,370.00 and Y = 364,044.06; North 1,850.94 feet to a corner having Coordinates of X = 1,576,370.00 and Y = 365,895.00; East 570.00 feet to a corner having Coordinates of X = 1,576,940.00 and Y = 365,895.00; North 625.00 feet to a corner having Coordinates of X = 1,576,940.00 and Y = 366,520.00; East 650.00 feet to a corner having Coordinates of X = 1,577,590.00 and Y = 366,520.00; North 1,476.86 feet to a corner having Coordinates of X = 1,577,590.00 and Y = 367,996.86 and Westerly approximately 714 feet to an interior corner on the Eastern boundary of said State Lease No. 2038; thence along the boundary of said State Lease No. 2038 the following: Northerly approximately 1,320 feet to a corner; Easterly approximately 1,487 feet to a corner; Northerly approximately 1,320 feet to a corner and Easterly approximately 1,320 feet to a Southeast corner; thence Southerly approximately 9,076 feet to a point having Coordinates of X = 1,579,716.94 and Y = 361,544.06; thence West 12,418.75 feet to the point of beginning, **LESS AND EXCEPT** that portion, if any, of State Lease No. 2038, as amended, and State Lease No. 18346 which may lie within the above described tract, containing approximately **1,104 acres**, all as more particularly outlined on a plat on file in the Office of Mineral Resources, Department of Natural Resources. All bearings, distances and coordinates are based on Louisiana Coordinate System of 1927, (South Zone).

NOTE: The above description of the Tract nominated for lease has been provided and corrected, where required, exclusively by the nomination party. Any mineral lease selected from this Tract and awarded by the Louisiana State Mineral Board shall be without warranty of any kind, either express, implied, or statutory, including, but not limited to, the implied warranties of merchantability and fitness for a particular purpose. Should the mineral lease awarded by the Louisiana State Mineral Board be subsequently modified, cancelled or abrogated due to the existence of conflicting leases, operating agreements, private claims or other future obligations or conditions which may affect all or any portion of the leased Tract, it shall not relieve the Lessee of the obligation to pay any bonus due thereon to the Louisiana State Mineral Board, nor shall the Louisiana State Mineral Board be obligated to refund any consideration

paid by the Lessor prior to such modification, cancellation, or abrogation, including, but not limited to, bonuses, rentals and royalties.

NOTE: This tract is located in The Rockefeller Wildlife Refuge and Game Preserve Area under the jurisdiction of the Louisiana Department of Wildlife and Fisheries which has promulgated rules and regulations for the protection of game and wildlife on the aforesaid Tract and, therefore, shall be subject to said rules and regulations, a copy of which shall be attached to the mineral lease. In addition to the specific rules and regulations applicable, the following shall apply regarding operations under this mineral lease:

1. Compliance with the Rockefeller mineral regulations shall be required.
2. No surface activities will be allowed in the vicinity of the Headquarters and associated facilities without written authorization from the Department.
3. Board road access will be required when feasible as determined by the Department.
4. In the event that board road access is not feasible, existing canals and waterways will be utilized to access proposed well locations. A maximum of 350 feet of new canal dredging will be allowed for individual well locations.
5. Compensatory mitigation will be required for unavoidable wetland losses.
6. No discharges will be allowed, including produced waters and drilling fluids. A containerized closed loop system will be required.
7. Seasonal restrictions may be imposed within specific management units dependent upon wildlife population levels.
8. A minimum bonus of \$350.00 per acre and a minimum royalty of 25% will be required.
9. Prior to submitting applications for wetland permits to Federal and State permitting agencies the lease holder shall coordinate project details with the Louisiana Department. Contact person for the Department will be Mike Windham at (504) 284-5268.

NOTE: The State of Louisiana does hereby reserve, and this lease shall be subject to, the imprescriptible right of surface use in the nature of a servitude in favor of the Department of Natural Resources, including its Offices and Commissions, for the sole purpose of implementing, constructing, servicing and maintaining approved coastal zone management and/or restoration projects. Utilization of any and all rights derived under this lease by the mineral lessee, its agents, successors or assigns, shall not interfere with nor hinder the reasonable surface use by the

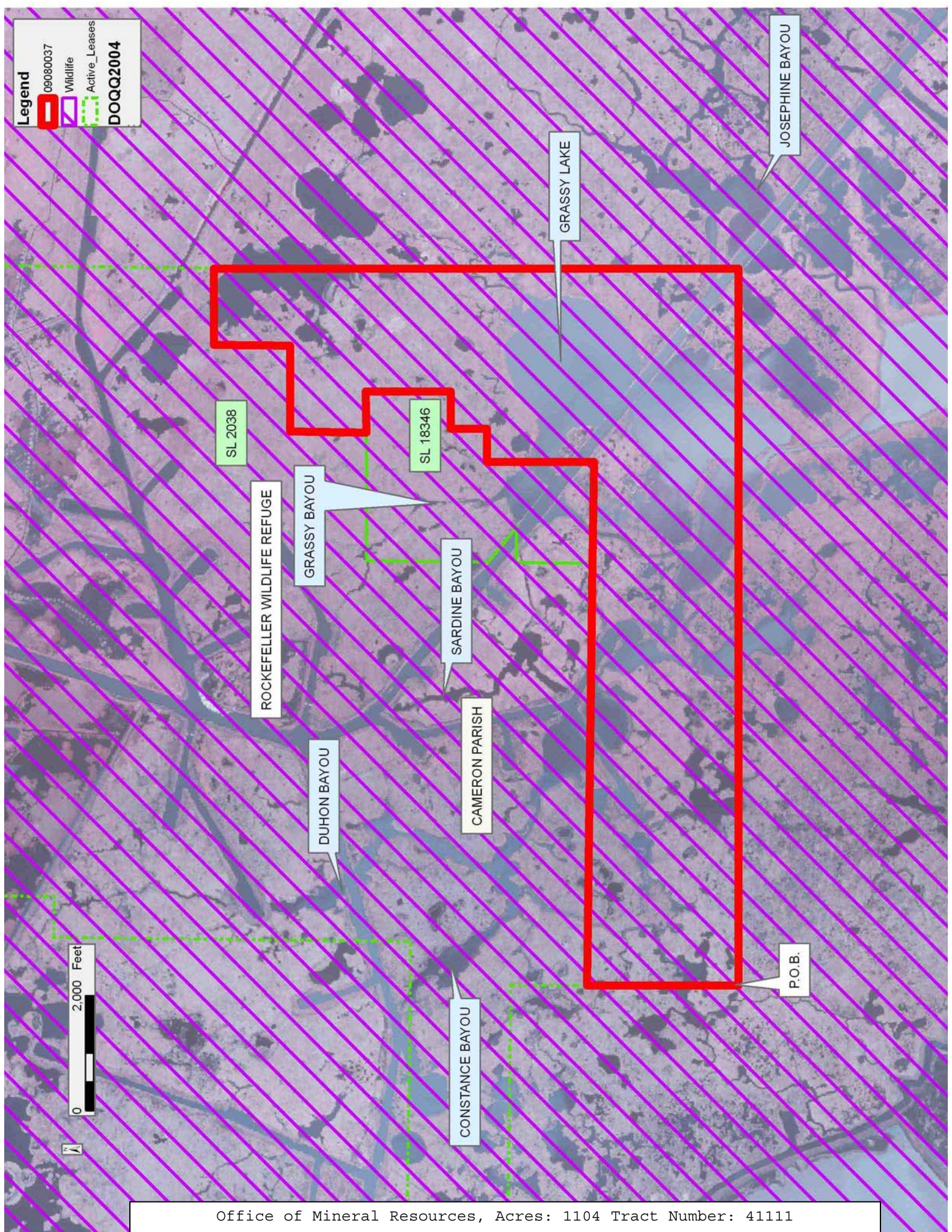
Department of Natural Resources, its Offices or Commissions, as herein above reserved.

Applicant: THEOPHILUS OIL, GAS & LAND SERVICES, LLC

Bidder	Cash Payment	Price/Acre	Rental	Oil	Gas	Other

**Legend**

- 09080037
- Wildlife
- Active\_Leases
- DOQQ2004





**TRACT 41112 - Cameron Parish, Louisiana**

A portion of all State owned lands, including high and marsh lands and land now or formerly constituting the beds and bottoms of any water body, within the boundaries of the Rockefeller Wildlife Refuge and Game Preserve, not presently under mineral lease by the State of Louisiana on August 12, 2009, situated in Cameron Parish, Louisiana, and described as follows: Beginning at a point lying within the Rockefeller Wildlife Refuge, said point being the Northeast corner of State Lease No. 2340, as amended, having Coordinates of X = 1,560,715.29 and Y = 370,157.03; thence East approximately 7,385 feet to a point on the West boundary of State Lease No. 2038, as amended, having a Coordinate of Y = 370,157.03; thence along the boundary of said State Lease No. 2038 the following: Southerly approximately 2,946 feet to a corner; Westerly approximately 6,011 feet to a corner; Southerly approximately 1,742 feet to a corner; Easterly approximately 5,280 feet to a corner and Southerly approximately 1,320 feet to its Southernmost Southwest corner; thence Southerly approximately 2,614 feet to a point having Coordinates of X = 1,567,298.19 and Y = 361,544.06; thence West 6,602.93 feet to a point on the East boundary of said State Lease No. 2340 having Coordinates of X = 1,560,695.26 and Y = 361,544.06; thence along the boundary of said State Lease No. 2340 the following courses: North 34 degrees 00 minutes 27 seconds East 115.74 feet to a corner having Coordinates of X = 1,560,759.99 and Y = 361,640.00; North 44 degrees 35 minutes 37 seconds East 498.52 feet to a corner having Coordinates of X = 1,561,109.98 and Y = 361,994.99; North 55 degrees 54 minutes 33 seconds East 501.47 feet to a corner having Coordinates of X = 1,561,525.28 and Y = 362,276.07; North 11 degrees 32 minutes 06 seconds West 626.58 feet to a corner having Coordinates of X = 1,561,399.98 and Y = 362,890.00; North 24 degrees 19 minutes 52 seconds West 631.05 feet to a corner having Coordinates of X = 1,561,139.98 and Y = 363,465.00; North 38 degrees 03 minutes 59 seconds West 308.13 feet to a corner having Coordinates of X = 1,560,950.00 and Y = 363,707.58; North 64 degrees 13 minutes 50 seconds East 166.57 feet to a corner having Coordinates of X = 1,561,100.00 and Y = 363,780.00; North 74 degrees 10 minutes 38 seconds East 972.12 feet to a corner having Coordinates of X = 1,562,035.29 and Y = 364,045.06; North 180.00 feet to a corner having Coordinates of X = 1,562,035.29 and Y = 364,225.06; West 1,320.00 feet to a corner having Coordinates of X = 1,560,715.29 and Y = 364,225.06 and North 5,931.97 feet to the point of beginning, **LESS AND EXCEPT** that portion, if any, of State Lease No. 2038, as amended, which may lie within the above described tract, containing approximately **1,108 acres**, all as more particularly outlined on a plat on file in the Office of Mineral Resources, Department of Natural Resources. All bearings, distances and coordinates are based on Louisiana Coordinate System of 1927, (South Zone).

NOTE: The above description of the Tract nominated for lease has been provided and corrected, where required, exclusively by the nomination party. Any mineral lease selected from this Tract and awarded by the Louisiana State Mineral Board shall be without warranty of any kind, either express, implied, or statutory, including, but not limited to, the

implied warranties of merchantability and fitness for a particular purpose. Should the mineral lease awarded by the Louisiana State Mineral Board be subsequently modified, cancelled or abrogated due to the existence of conflicting leases, operating agreements, private claims or other future obligations or conditions which may affect all or any portion of the leased Tract, it shall not relieve the Lessee of the obligation to pay any bonus due thereon to the Louisiana State Mineral Board, nor shall the Louisiana State Mineral Board be obligated to refund any consideration paid by the Lessor prior to such modification, cancellation, or abrogation, including, but not limited to, bonuses, rentals and royalties.

NOTE: This tract is located in The Rockefeller Wildlife Refuge and Game Preserve Area under the jurisdiction of the Louisiana Department of Wildlife and Fisheries which has promulgated rules and regulations for the protection of game and wildlife on the aforesaid Tract and, therefore, shall be subject to said rules and regulations, a copy of which shall be attached to the mineral lease. In addition to the specific rules and regulations applicable, the following shall apply regarding operations under this mineral lease:

1. Compliance with the Rockefeller mineral regulations shall be required.
2. No surface activities will be allowed in the vicinity of the Headquarters and associated facilities without written authorization from the Department.
3. Board road access will be required when feasible as determined by the Department.
4. In the event that board road access is not feasible, existing canals and waterways will be utilized to access proposed well locations. A maximum of 350 feet of new canal dredging will be allowed for individual well locations.
5. Compensatory mitigation will be required for unavoidable wetland losses.
6. No discharges will be allowed, including produced waters and drilling fluids. A containerized closed loop system will be required.
7. Seasonal restrictions may be imposed within specific management units dependent upon wildlife population levels.
8. A minimum bonus of \$350.00 per acre and a minimum royalty of 25% will be required.
9. Prior to submitting applications for wetland permits to Federal and State permitting agencies the lease holder shall coordinate project details with the Louisiana Department. Contact person for the Department will be Mike Windham at (504) 284-5268.

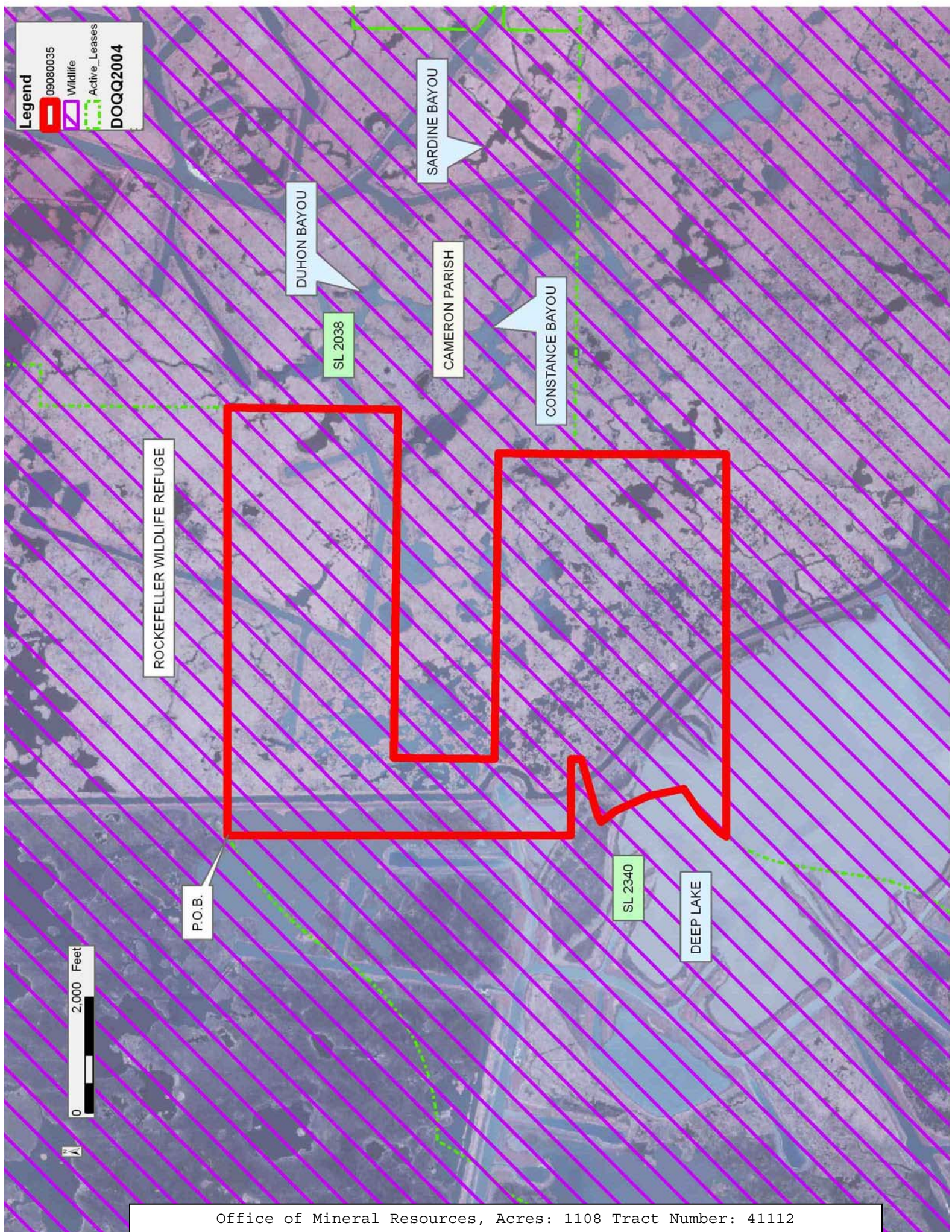
NOTE: The State of Louisiana does hereby reserve, and this lease shall be subject to, the imprescriptible right of surface use in the nature of a servitude in favor of the Department of Natural Resources, including its Offices and Commissions, for the sole purpose of implementing, constructing, servicing and maintaining approved coastal zone management and/or restoration projects. Utilization of any and all rights derived under this lease by the mineral lessee, its agents, successors or assigns, shall not interfere with nor hinder the reasonable surface use by the Department of Natural Resources, its Offices or Commissions, as herein above reserved.

Applicant: THEOPHILUS OIL, GAS & LAND SERVICES, LLC

Bidder	Cash Payment	Price/Acre	Rental	Oil	Gas	Other

**Legend**

- 09080035
- Wildlife
- Active\_Leases
- DOQQ2004



ROCKEFELLER WILDLIFE REFUGE

DUHON BAYOU

SARDINE BAYOU

CAMERON PARISH

CONSTANCE BAYOU

SL 2038

P.O.B.

SL 2340

DEEP LAKE

