

TRACT 41076 - Ouachita Parish, Louisiana

All of the lands now or formerly constituting the beds and bottoms of all water bodies of every nature and description as to which title is vested in the State of Louisiana, together with all islands arising therein and other lands formed by accretion or by reliction, where allowed by law, excepting tax adjudicated lands, and not presently under mineral lease on August 12, 2009, situated in Ouachita Parish, Louisiana, and more particularly described as follows: The East Half of the Northwest Quarter (E/2 of NW/4) and the East Half of the East Half of the West Half of the Northwest Quarter (E/2 of E/2 of W/2 of NW/4), Section 34, Township 18 North, Range 2 East, Ouachita Parish, Louisiana, **LESS AND EXCEPT** a 5.843 acre tract sold to the Louisiana State Highway Department, Ouachita Parish, Louisiana, also known and referred to as Site Code: 8-37-019, containing approximately **94.57 acres**, all as more particularly outlined on a plat on file in the Office of Mineral Resources, Department of Natural Resources. All bearings, distances and coordinates are based on Louisiana Coordinate System of 1927, (North or South Zone), where applicable.

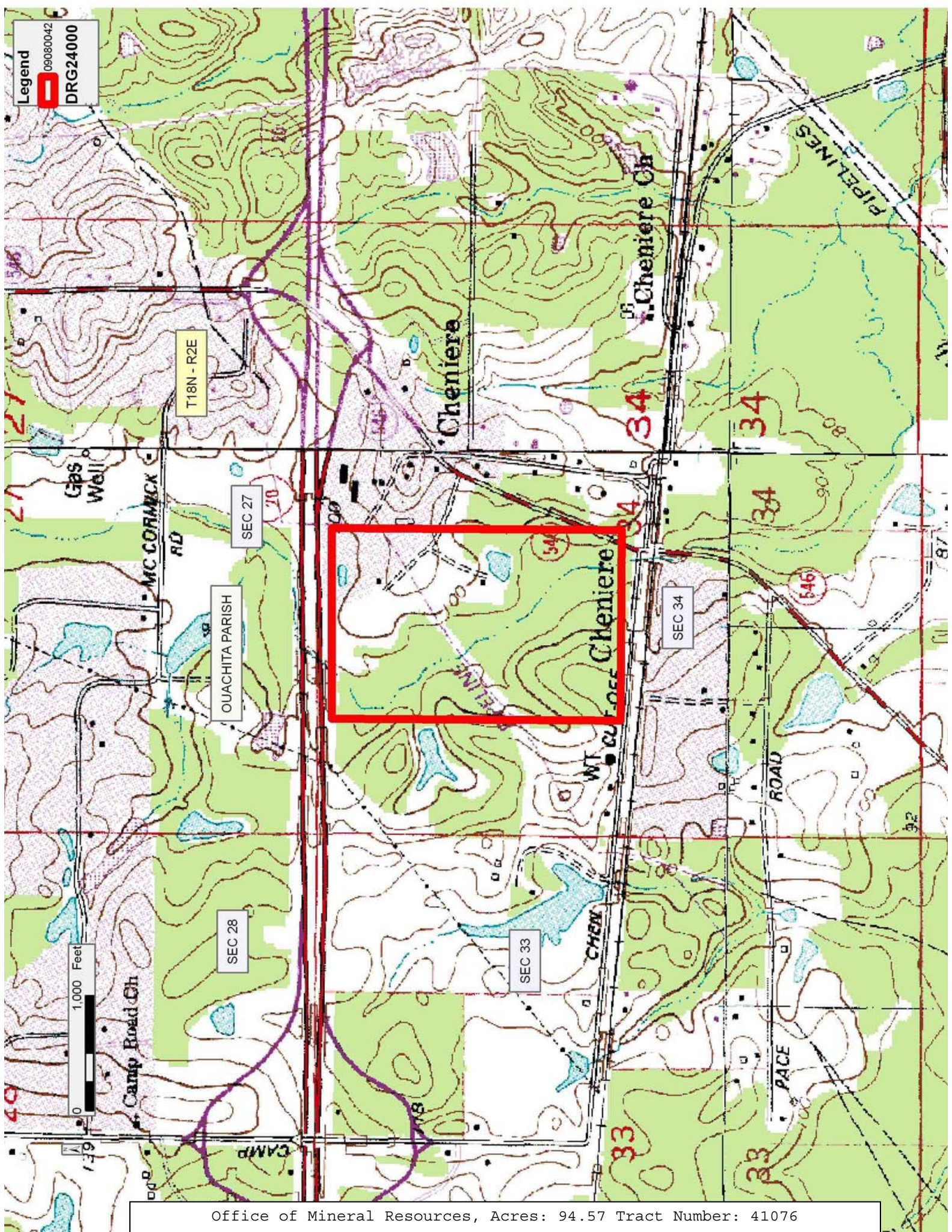
NOTE: The above description of the Tract nominated for lease has been provided and corrected, where required, exclusively by the nomination party. Any mineral lease selected from this Tract and awarded by the Louisiana State Mineral Board shall be without warranty of any kind, either express, implied, or statutory, including, but not limited to, the implied warranties of merchantability and fitness for a particular purpose. Should the mineral lease awarded by the Louisiana State Mineral Board be subsequently modified, cancelled or abrogated due to the existence of conflicting leases, operating agreements, private claims or other future obligations or conditions which may affect all or any portion of the leased Tract, it shall not relieve the Lessee of the obligation to pay any bonus due thereon to the Louisiana State Mineral Board, nor shall the Louisiana State Mineral Board be obligated to refund any consideration paid by the Lessor prior to such modification, cancellation, or abrogation, including, but not limited to, bonuses, rentals and royalties.

NOTE: There shall be no surface operations conducted on the property without prior written consent from the State of Louisiana.

Applicant: THEOPHILUS OIL, GAS & LAND SERVICES, LLC

Bidder	Cash Payment	Price/Acre	Rental	Oil	Gas	Other

Legend
090800042
DRG24000



TRACT 41077 - Madison Parish, Louisiana

All of the lands now or formerly constituting the beds and bottoms of all water bodies of every nature and description as to which title is vested in the State of Louisiana, together with all islands arising therein and other lands formed by accretion or by reliction, where allowed by law, excepting tax adjudicated lands, and not presently under mineral lease on August 12, 2009, situated in Madison Parish, Louisiana, and more particularly described as follows: Beginning at a point having Coordinates X = 2,329,100.00 and Y = 650,200.00; thence East 5,800 feet to a point having Coordinates of X = 2,334,900.00 and Y = 650,200.00; thence South 3000 feet to a point having Coordinates X = 2,334,900.00 and Y = 647,200.00; thence West 5,800 feet to a point having Coordinates X = 2,329,100.00 and Y = 647,200.00; thence North 3,000 feet to the point of beginning, containing approximately **26 acres**, all as more particularly outlined on a plat on file in the Office of Mineral Resources, Department of Natural Resources. All bearings, distances and coordinates are based on Louisiana Coordinate System of 1927, (North or South Zone), where applicable.

NOTE: The above description of the Tract nominated for lease has been provided and corrected, where required, exclusively by the nomination party. Any mineral lease selected from this Tract and awarded by the Louisiana State Mineral Board shall be without warranty of any kind, either express, implied, or statutory, including, but not limited to, the implied warranties of merchantability and fitness for a particular purpose. Should the mineral lease awarded by the Louisiana State Mineral Board be subsequently modified, cancelled or abrogated due to the existence of conflicting leases, operating agreements, private claims or other future obligations or conditions which may affect all or any portion of the leased Tract, it shall not relieve the Lessee of the obligation to pay any bonus due thereon to the Louisiana State Mineral Board, nor shall the Louisiana State Mineral Board be obligated to refund any consideration paid by the Lessor prior to such modification, cancellation, or abrogation, including, but not limited to, bonuses, rentals and royalties.

Applicant: ROGER ADAMS

Bidder	Cash Payment	Price/Acre	Rental	Oil	Gas	Other

Legend
09080008
Active_Leases
DOQQ2004



T17N - R10E
MADISON PARISH

SL 19273

P.O.B.

JOES BAYOU

0 1,000 Feet



TRACT 41078 - Red River Parish, Louisiana

All of the lands now or formerly constituting the beds and bottoms of all water bodies of every nature and description as to which title is vested in the State of Louisiana, together with all islands arising therein and other lands formed by accretion or by reliction, where allowed by law, excepting tax adjudicated lands, and not presently under mineral lease on August 12, 2009, situated in Red River Parish, Louisiana, and more particularly described as follows: Beginning at the Northeast corner of State Lease No. 19839 having Coordinates of X = 1,739,940.00 and Y = 477,365.00; thence West 10,490.00 feet along the North line of said State Lease No. 19839 to a point having Coordinates of X = 1,729,450.00 and Y = 477,365.00; thence North 11,000.00 feet to a point having Coordinates of X = 1,729,450.00 and Y = 488,365.00; thence East 10,490.00 feet to a point having Coordinates of X = 1,739,940.00 and Y = 488,365.00; thence South 11,000.00 feet to the point of beginning, containing approximately **359 acres**, all as more particularly outlined on a plat on file in the Office of Mineral Resources, Department of Natural Resources. All bearings, distances and coordinates are based on Louisiana Coordinate System of 1927, (North or South Zone), where applicable.

NOTE: The above description of the Tract nominated for lease has been provided and corrected, where required, exclusively by the nomination party. Any mineral lease selected from this Tract and awarded by the Louisiana State Mineral Board shall be without warranty of any kind, either express, implied, or statutory, including, but not limited to, the implied warranties of merchantability and fitness for a particular purpose. Should the mineral lease awarded by the Louisiana State Mineral Board be subsequently modified, cancelled or abrogated due to the existence of conflicting leases, operating agreements, private claims or other future obligations or conditions which may affect all or any portion of the leased Tract, it shall not relieve the Lessee of the obligation to pay any bonus due thereon to the Louisiana State Mineral Board, nor shall the Louisiana State Mineral Board be obligated to refund any consideration paid by the Lessor prior to such modification, cancellation, or abrogation, including, but not limited to, bonuses, rentals and royalties.

Applicant: MOOSE ENERGY PARTNERS

Bidder	Cash Payment	Price/Acre	Rental	Oil	Gas	Other

Legend
09080003
Active_Leases
DOQQ2004

T12N - R9W

P.O.B.

RED RIVER

RED RIVER PARISH

SL 19839

0 2,000 Feet

T12N - R10W

T11N - R10W

TRACT 41079 - - Catahoula Parish, Louisiana

The State Mineral Board acting on behalf of the Avoyelles Parish School Board and the Catahoula Parish School Board, pursuant to Resolution(s) adopted by that (those) body(ies) and in accordance with Louisiana Revised Statutes 30:121-136 and 151-156, as amended, and Article XIV, Section 16(A)(9) and (B) of the Louisiana Constitution of 1974, as same may be continued and promulgated in proper statutory form and, further, amended from time to time, advertises the lands not under mineral lease on August 12, 2009, excluding the beds and bottoms of all navigable water bodies located within the following: All or a portion of Section 9 and 16 and 20 and 21 and 8 and 17 and 22 and 10 and 15, Township 4 North, Range 5 East in Catahoula Parish, Louisiana, All of Section 16, Township 4 North, Range 5 East in Catahoula Parish, Louisiana, containing approximately **641.40 acres**, all as more particularly outlined on a plat on file in the Office of Mineral Resources, Department of Natural Resources. All bearings, distances and coordinates are based on Louisiana Coordinate System of 1927, (North or South Zone).

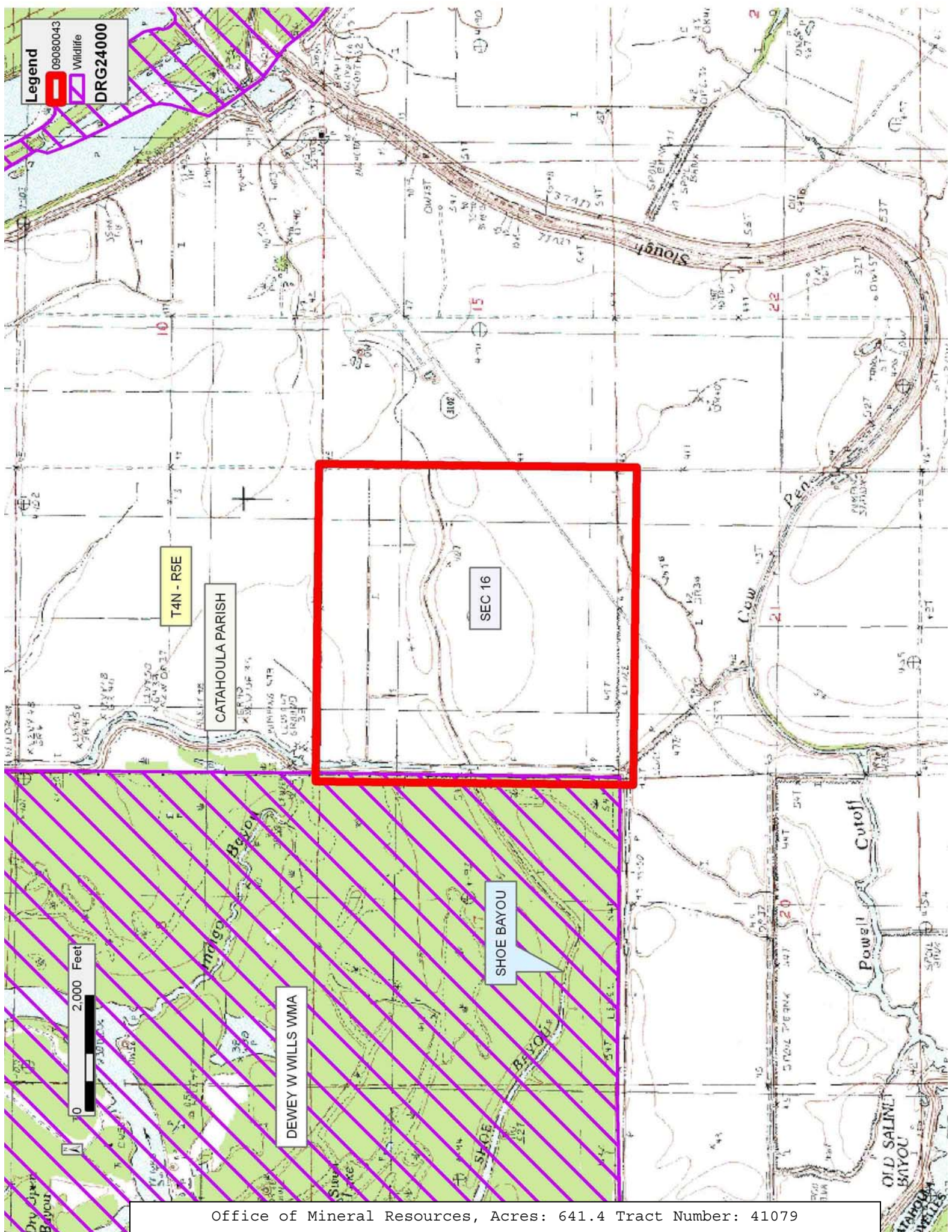
NOTE: The above description of the Tract nominated for lease has been provided and corrected, where required, exclusively by the nomination party. Any mineral lease selected from this Tract and awarded by the Louisiana State Mineral Board shall be without warranty of any kind, either express, implied, or statutory, including, but not limited to, the implied warranties of merchantability and fitness for a particular purpose. Should the mineral lease awarded by the Louisiana State Mineral Board be subsequently modified, cancelled or abrogated due to the existence of conflicting leases, operating agreements, private claims or other future obligations or conditions which may affect all or any portion of the leased Tract, it shall not relieve the Lessee of the obligation to pay any bonus due thereon to the Louisiana State Mineral Board, nor shall the Louisiana State Mineral Board be obligated to refund any consideration paid by the Lessor prior to such modification, cancellation, or abrogation, including, but not limited to, bonuses, rentals and royalties.

NOTE: Lessors acknowledge that said Township 4 North, Range 5 East is located 8.67% in Avoyelles Parish and 91.33% in Catahoula Parish, and Lessee is authorized and directed to pay any and all rentals and royalties which may accrue under the terms of this lease to Lessors separately and respectively in the following proportions: Avoyelles Parish School Board - 8.67% and Catahoula Parish School Board - 91.33%, and further, prospective bidders are hereby placed on notice that execution by the State Mineral Board of oil, gas and mineral leases on behalf of the Avoyelles and Catahoula Parish School Board(s) as above set forth on the above described Section 16 shall not be construed as a waiver by the State Mineral Board of any rights that it may have to lease for and on behalf of the State of Louisiana any navigable water bottoms that might be included within said Section 16.

NOTE: There shall be no surface operations on the property without the prior written consent of Lessor.

Applicant: THEOPHILUS OIL, GAS & LAND SERVICES, LLC

Bidder	Cash Payment	Price/Acre	Rental	Oil	Gas	Other



Legend

- 060800043
- Wildlife
- DRG24000

T4N - R5E

CATAHOULA PARISH

SEC 16

DEWEY WILLS WMA

SHOE BAYOU

TRACT 41080 - St. Landry Parish, Louisiana

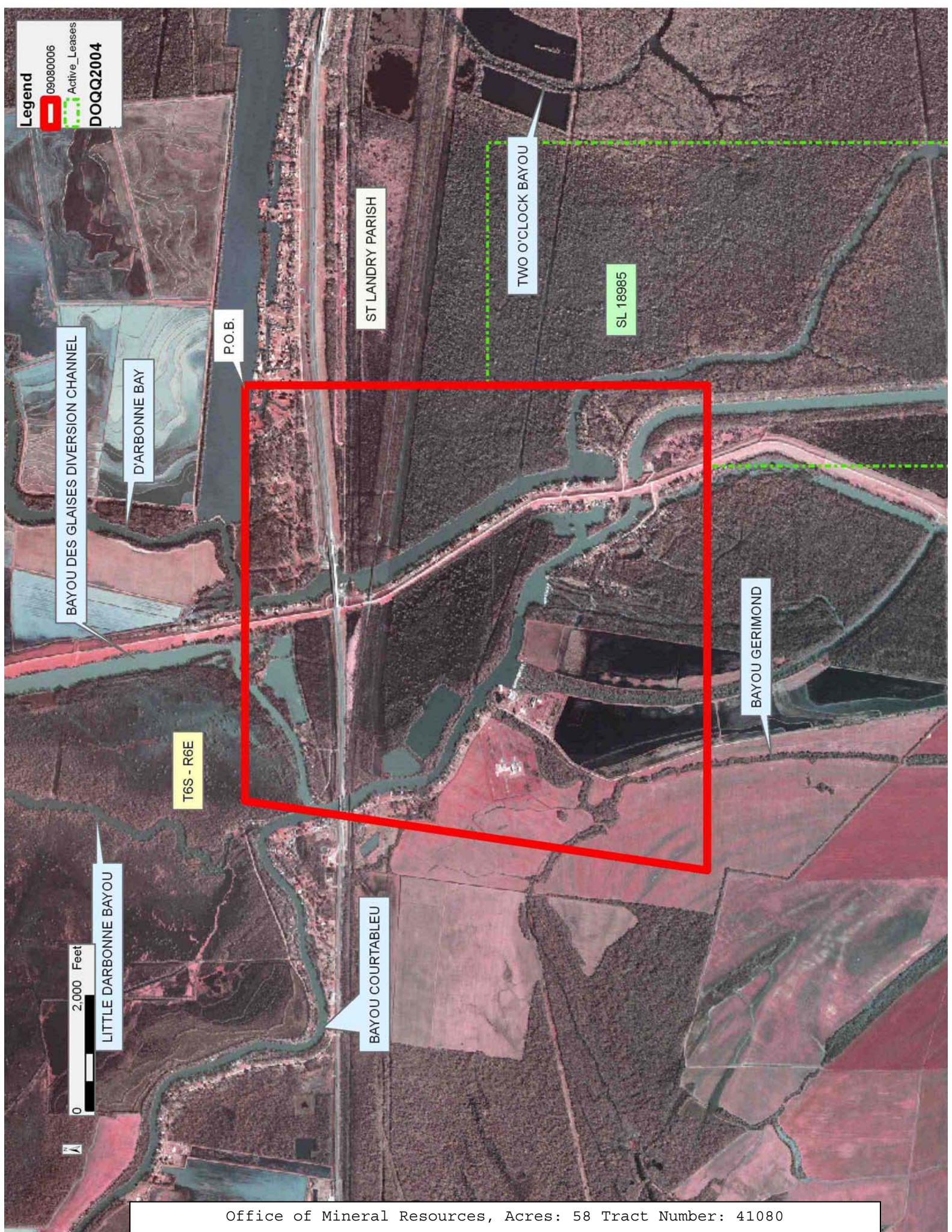
All of the lands now or formerly constituting the beds and bottoms of all water bodies of every nature and description as to which title is vested in the State of Louisiana, together with all islands arising therein and other lands formed by accretion or by reliction, where allowed by law, excepting tax adjudicated lands, and not presently under mineral lease on August 12, 2009, situated in St. Landry Parish, Louisiana, and more particularly described as follows: Beginning at a point having Coordinates of X = 1,837,000.00 and Y = 685,900.00; thence South 4,200.00 feet to the Northwest corner of State Lease No. 18985 having Coordinates of X = 1,837,000.00 and Y = 681,700.00; thence along the boundary of said State Lease No. 18985 the following courses: South 3,800.00 feet to a point having Coordinates of X = 1,837,000.00 and Y = 677,900.00 and West 1,400.00 feet to a point having Coordinates of X = 1,835,600.00 and Y = 677,900.00; thence West 7,000.00 feet to a point having Coordinates of X = 1,828,600.00 and Y = 677,900.00; thence North 08 degrees 31 minutes 51 seconds East 8,089.50 feet to a point having Coordinates of X = 1,829,800.00 and Y = 685,900.00; thence East 7,200.00 feet to the point of beginning, containing approximately **58 acres**, all as more particularly outlined on a plat on file in the Office of Mineral Resources, Department of Natural Resources. All bearings, distances and coordinates are based on Louisiana Coordinate System of 1927, (North or South Zone), where applicable.

NOTE: The above description of the Tract nominated for lease has been provided and corrected, where required, exclusively by the nomination party. Any mineral lease selected from this Tract and awarded by the Louisiana State Mineral Board shall be without warranty of any kind, either express, implied, or statutory, including, but not limited to, the implied warranties of merchantability and fitness for a particular purpose. Should the mineral lease awarded by the Louisiana State Mineral Board be subsequently modified, cancelled or abrogated due to the existence of conflicting leases, operating agreements, private claims or other future obligations or conditions which may affect all or any portion of the leased Tract, it shall not relieve the Lessee of the obligation to pay any bonus due thereon to the Louisiana State Mineral Board, nor shall the Louisiana State Mineral Board be obligated to refund any consideration paid by the Lessor prior to such modification, cancellation, or abrogation, including, but not limited to, bonuses, rentals and royalties.

Applicant: LAFAYETTE LAND SERVICES, LLC

Bidder	Cash Payment	Price/Acre	Rental	Oil	Gas	Other

Legend
09080006
Active_Leases
DOQQ2004



TRACT 41081 - Lafourche and St. Charles Parishes, Louisiana

All of the lands now or formerly constituting the beds and bottoms of all water bodies of every nature and description as to which title is vested in the State of Louisiana, together with all islands arising therein and other lands formed by accretion or by reliction, where allowed by law, excepting tax adjudicated lands, and not presently under mineral lease on August 12, 2009, situated in Lafourche and St. Charles Parishes, Louisiana, and more particularly described as follows: Beginning at a point having Coordinates of X = 2,265,660.00 and Y = 434,450.00; thence East 7,605.00 feet to a point having Coordinates of X = 2,273,265.00 and Y = 434,450.00; thence South 06 degrees 03 minutes 45 seconds East 14,581.55 feet to a point having Coordinates of X = 2,274,805.00 and Y = 419,950.00; thence West 5,500.00 feet to a point having Coordinates of X = 2,269,305.00 and Y = 419,950.00; thence North 14 degrees 06 minutes 38 seconds West 14,951.12 feet to the point of beginning, containing approximately **340 acres**, all as more particularly outlined on a plat on file in the Office of Mineral Resources, Department of Natural Resources. All bearings, distances and coordinates are based on Louisiana Coordinate System of 1927, (North or South Zone), where applicable.

NOTE: The above description of the Tract nominated for lease has been provided and corrected, where required, exclusively by the nomination party. Any mineral lease selected from this Tract and awarded by the Louisiana State Mineral Board shall be without warranty of any kind, either express, implied, or statutory, including, but not limited to, the implied warranties of merchantability and fitness for a particular purpose. Should the mineral lease awarded by the Louisiana State Mineral Board be subsequently modified, cancelled or abrogated due to the existence of conflicting leases, operating agreements, private claims or other future obligations or conditions which may affect all or any portion of the leased Tract, it shall not relieve the Lessee of the obligation to pay any bonus due thereon to the Louisiana State Mineral Board, nor shall the Louisiana State Mineral Board be obligated to refund any consideration paid by the Lessor prior to such modification, cancellation, or abrogation, including, but not limited to, bonuses, rentals and royalties.

NOTE: The State of Louisiana does hereby reserve, and this lease shall be subject to, the imprescriptible right of surface use in the nature of a servitude in favor of the Department of Natural Resources, including its Offices and Commissions, for the sole purpose of implementing, constructing, servicing and maintaining approved coastal zone management and/or restoration projects. Utilization of any and all rights derived under this lease by the mineral lessee, its agents, successors or assigns, shall not interfere with nor hinder the reasonable surface use by the Department of Natural Resources, its Offices or Commissions, as herein above reserved.

NOTE: The above Tract is located upon a restricted scenic river and all operations in this area must be conducted in strict conformity with the regulations of the Corps of Engineers, U.S. Army.

Applicant: THEOPHILUS OIL, GAS & LAND SERVICES, LLC

Bidder	Cash Payment	Price/Acre	Rental	Oil	Gas	Other

Legend
09080038
DOQQ2004

ST CHARLES PARISH

BAY LAURENT

T14S - R20E

P.O.B.
0 2,000 Feet

BAYOU DES ALLEMANDS

LAFOURCHE PARISH

T14S - R19E

TRACT 41082 - Lafourche and St. Charles Parishes, Louisiana

All of the lands now or formerly constituting the beds and bottoms of all water bodies of every nature and description as to which title is vested in the State of Louisiana, together with all islands arising therein and other lands formed by accretion or by reliction, where allowed by law, excepting tax adjudicated lands, and not presently under mineral lease on August 12, 2009, situated in Lafourche and St. Charles Parishes, Louisiana, and more particularly described as follows: Beginning at a point having Coordinates of X = 2,269,305.00 and Y = 419,950.00; thence East 5,500.00 feet to a point having Coordinates of X = 2,274,805.00 and Y = 419,950.00; thence South 52 degrees 41 minutes 51 seconds East 14,570.42 feet to a point having Coordinates of X = 2,286,395.00 and Y = 411,120.00; thence South 49 degrees 53 minutes 29 seconds West 11,858.94 feet to a point having Coordinates of X = 2,277,325.00 and Y = 403,480.00; thence North 25 degrees 57 minutes 49 seconds West 18,318.88 feet to the point of beginning, containing approximately **1,055 acres**, all as more particularly outlined on a plat on file in the Office of Mineral Resources, Department of Natural Resources. All bearings, distances and coordinates are based on Louisiana Coordinate System of 1927, (North or South Zone), where applicable.

NOTE: The above description of the Tract nominated for lease has been provided and corrected, where required, exclusively by the nomination party. Any mineral lease selected from this Tract and awarded by the Louisiana State Mineral Board shall be without warranty of any kind, either express, implied, or statutory, including, but not limited to, the implied warranties of merchantability and fitness for a particular purpose. Should the mineral lease awarded by the Louisiana State Mineral Board be subsequently modified, cancelled or abrogated due to the existence of conflicting leases, operating agreements, private claims or other future obligations or conditions which may affect all or any portion of the leased Tract, it shall not relieve the Lessee of the obligation to pay any bonus due thereon to the Louisiana State Mineral Board, nor shall the Louisiana State Mineral Board be obligated to refund any consideration paid by the Lessor prior to such modification, cancellation, or abrogation, including, but not limited to, bonuses, rentals and royalties.

NOTE: The State of Louisiana does hereby reserve, and this lease shall be subject to, the imprescriptible right of surface use in the nature of a servitude in favor of the Department of Natural Resources, including its Offices and Commissions, for the sole purpose of implementing, constructing, servicing and maintaining approved coastal zone management and/or restoration projects. Utilization of any and all rights derived under this lease by the mineral lessee, its agents, successors or assigns, shall not interfere with nor hinder the reasonable surface use by the Department of Natural Resources, its Offices or Commissions, as herein above reserved.

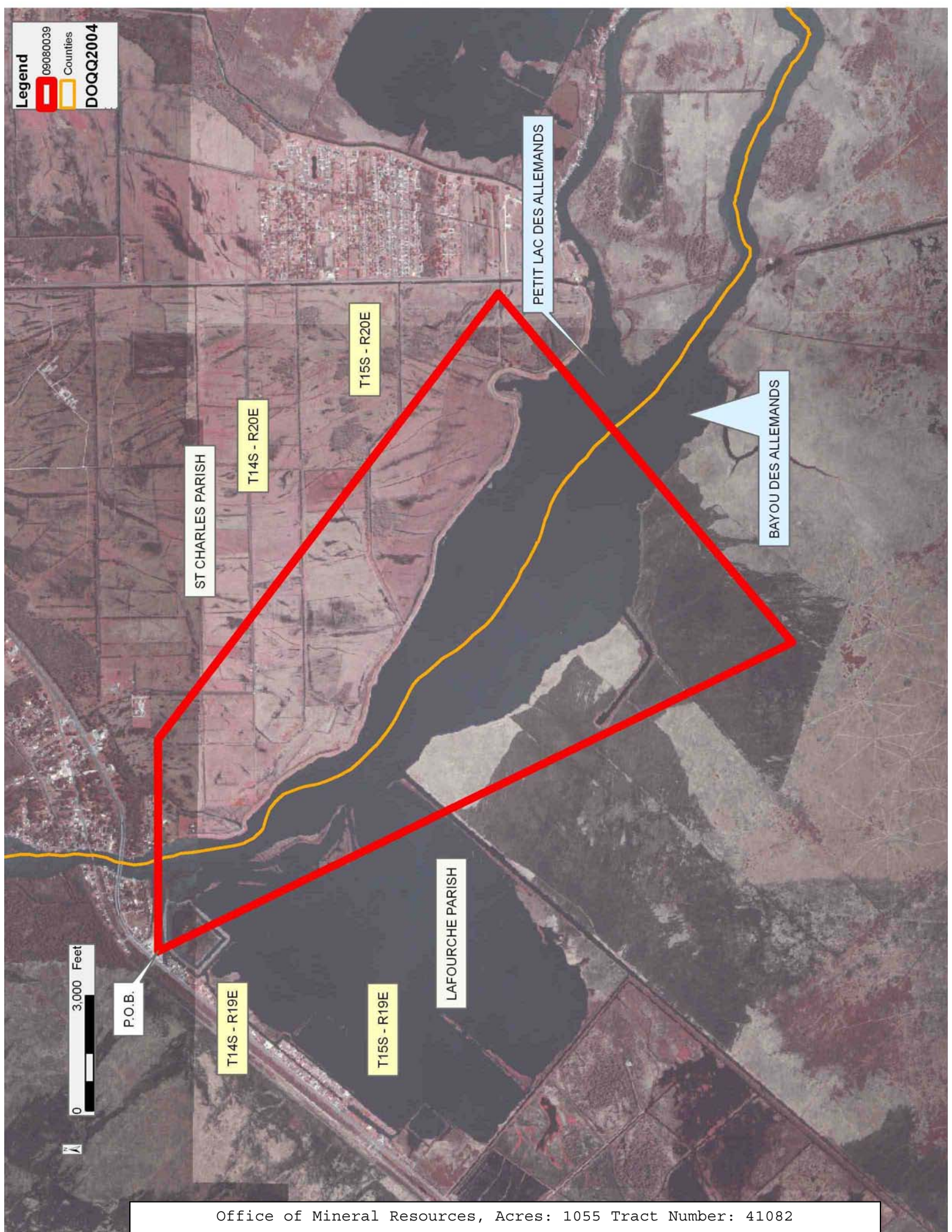
NOTE: The above Tract is located upon a restricted scenic river and all operations in this area must be conducted in strict conformity with the regulations of the Corps of Engineers, U.S. Army.

Applicant: THEOPHILUS OIL, GAS & LAND SERVICES, LLC

Bidder	Cash Payment	Price/Acre	Rental	Oil	Gas	Other

Legend

- 09080039
- Counties
- DOQQ2004



TRACT 41083 - Lafourche and St. Charles Parishes, Louisiana

All of the lands now or formerly constituting the beds and bottoms of all water bodies of every nature and description as to which title is vested in the State of Louisiana, together with all islands arising therein and other lands formed by accretion or by reliction, where allowed by law, excepting tax adjudicated lands, and not presently under mineral lease on August 12, 2009, situated in Lafourche and St. Charles Parishes, Louisiana, and more particularly described as follows: Beginning at a point having Coordinates of X = 2,280,001.88 and Y = 405,734.84; thence North 49 degrees 53 minutes 29 seconds East 8,358.94 feet to a point having Coordinates of X = 2,286,395.00 and Y = 411,120.00; thence South 71 degrees 30 minutes 43 seconds East 11,936.02 feet to a point having Coordinates of X = 2,297,715.00 and Y = 407,335.00; thence South 1,415.00 feet to a point having Coordinates of X = 2,297,715.00 and Y = 405,920.00; thence West 4,815.00 feet to a point having Coordinates of X = 2,292,900.00 and Y = 405,920.00; thence South 920.00 feet to the Northwest corner of State Lease No. 19278 having Coordinates of X = 2,292,900.00 and Y = 405,000.00; thence South 3,000.00 feet along the West boundary of said State Lease No. 19278 to its Southwest corner having Coordinates of X = 2,292,900.00 and Y = 402,000.00; thence North 73 degrees 51 minutes 03 seconds West 13,427.97 feet to the point of beginning, **LESS AND EXCEPT** that portion, if any, of State Lease No. 348, as amended, that may lie within the above described tract, containing approximately **450 acres**, all as more particularly outlined on a plat on file in the Office of Mineral Resources, Department of Natural Resources. All bearings, distances and coordinates are based on Louisiana Coordinate System of 1927, (North or South Zone), where applicable.

NOTE: The above description of the Tract nominated for lease has been provided and corrected, where required, exclusively by the nomination party. Any mineral lease selected from this Tract and awarded by the Louisiana State Mineral Board shall be without warranty of any kind, either express, implied, or statutory, including, but not limited to, the implied warranties of merchantability and fitness for a particular purpose. Should the mineral lease awarded by the Louisiana State Mineral Board be subsequently modified, cancelled or abrogated due to the existence of conflicting leases, operating agreements, private claims or other future obligations or conditions which may affect all or any portion of the leased Tract, it shall not relieve the Lessee of the obligation to pay any bonus due thereon to the Louisiana State Mineral Board, nor shall the Louisiana State Mineral Board be obligated to refund any consideration paid by the Lessor prior to such modification, cancellation, or abrogation, including, but not limited to, bonuses, rentals and royalties.

NOTE: The State of Louisiana does hereby reserve, and this lease shall be subject to, the imprescriptible right of surface use in the nature of a servitude in favor of the Department of Natural Resources, including its Offices and Commissions, for the sole purpose of implementing, constructing, servicing and maintaining approved coastal zone management

and/or restoration projects. Utilization of any and all rights derived under this lease by the mineral lessee, its agents, successors or assigns, shall not interfere with nor hinder the reasonable surface use by the Department of Natural Resources, its Offices or Commissions, as herein above reserved.

NOTE: The above Tract is located upon a restricted scenic river and all operations in this area must be conducted in strict conformity with the regulations of the Corps of Engineers, U.S. Army.

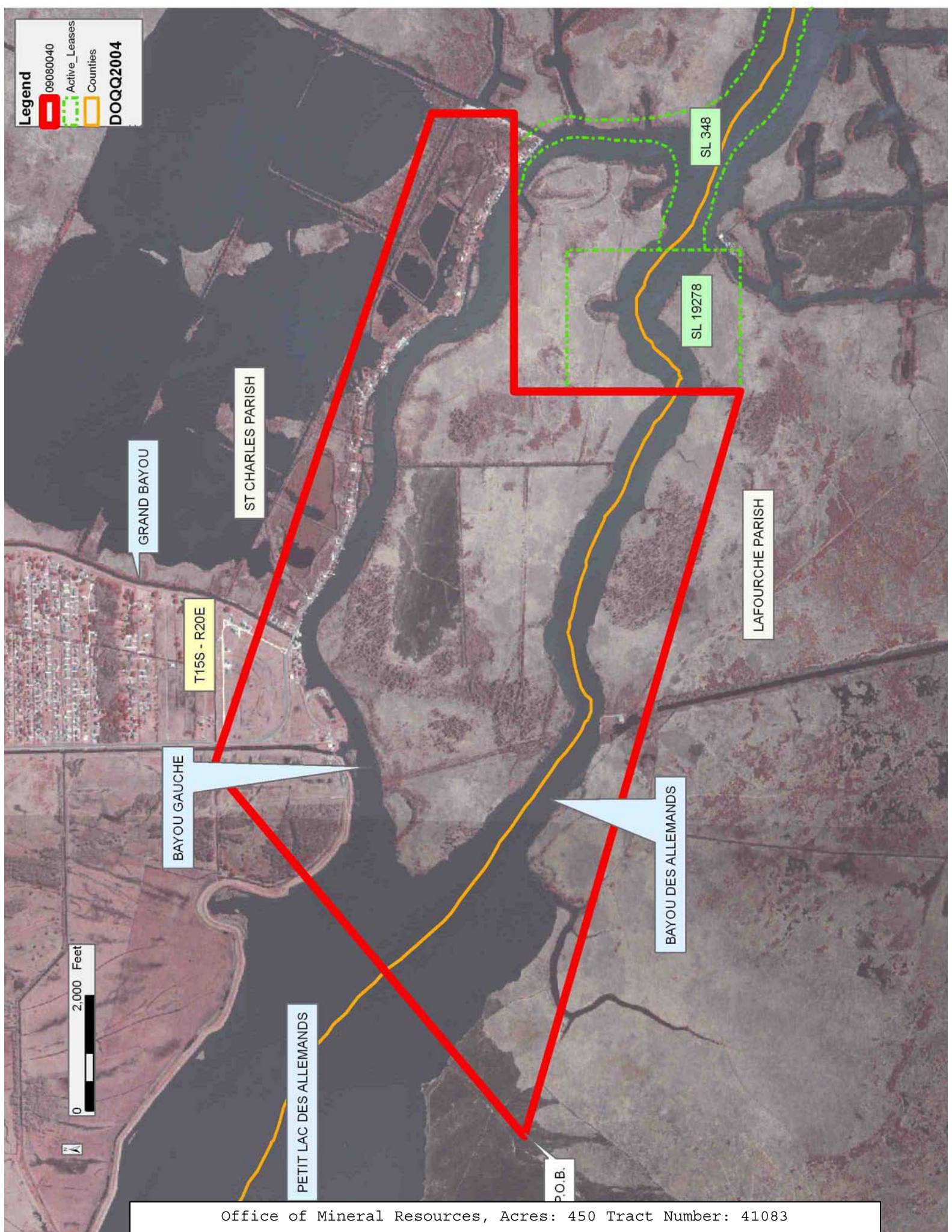
Applicant: THEOPHILUS OIL, GAS & LAND SERVICES, LLC

Bidder	Cash Payment	Price/Acre	Rental	Oil	Gas	Other

Legend

-  09080040
-  Active_Leases
-  Counties

DOQQ2004



TRACT 41084 - Portion of Block 1, East Cameron Area, Revised, Cameron Parish, Louisiana

All of the lands now or formerly constituting the beds and bottoms of all water bodies of every nature and description as to which title is vested in the State of Louisiana, together with all islands arising therein and other lands formed by accretion or by reliction, where allowed by law, excepting tax adjudicated lands, and not presently under mineral lease on August 12, 2009, situated in Cameron Parish, Louisiana, and more particularly described as follows: Beginning at a point having Coordinates of X = 1,465,241.95 and Y = 392,200.00; thence East 10,273.05 feet to a point having Coordinates of X = 1,475,515.00 and Y = 392,200.00; thence South approximately 6,485 feet to a point on the North boundary of State Lease No. 1170, as amended, having a Coordinate of X = 1,475,515.00; thence Northwesterly along the meanders of said State Lease No. 1170 to its Northernmost corner having Coordinates of X = 1,470,467.28 and Y = 387,618.78; thence North 82.04 feet to a point on the Louisiana Coastline, as decreed by the Supreme Court of the United States, as determined by a Special Master appointed therein, in litigation styled *United States v. State of Louisiana et al No. 9 Original*, in 1975, having Coordinates of X = 1,470,467.28 and Y = 387,700.83; thence along said Louisiana Coastline the following: Northwesterly on a straight line to a point having Coordinates of X = 1,467,685 and Y = 388,820 and Northwesterly on a straight line to a point having Coordinates of X = 1,465,241.95 and Y = 389,642.21; thence North 2,557.79 feet to the point of beginning, **LESS AND EXCEPT** that portion, if any, of State Lease No. 1170, as amended, which may lie within the above described tract, containing approximately **228 acres**, all as more particularly outlined on a plat on file in the Office of Mineral Resources, Department of Natural Resources. All bearings, distances and coordinates are based on Louisiana Coordinate System of 1927, (North or South Zone), where applicable.

NOTE: The above description of the Tract nominated for lease has been provided and corrected, where required, exclusively by the nomination party. Any mineral lease selected from this Tract and awarded by the Louisiana State Mineral Board shall be without warranty of any kind, either express, implied, or statutory, including, but not limited to, the implied warranties of merchantability and fitness for a particular purpose. Should the mineral lease awarded by the Louisiana State Mineral Board be subsequently modified, cancelled or abrogated due to the existence of conflicting leases, operating agreements, private claims or other future obligations or conditions which may affect all or any portion of the leased Tract, it shall not relieve the Lessee of the obligation to pay any bonus due thereon to the Louisiana State Mineral Board, nor shall the Louisiana State Mineral Board be obligated to refund any consideration paid by the Lessor prior to such modification, cancellation, or abrogation, including, but not limited to, bonuses, rentals and royalties.

NOTE: The State of Louisiana does hereby reserve, and this lease shall be subject to, the imprescriptible right of surface use in the nature of a

servitude in favor of the Department of Natural Resources, including its Offices and Commissions, for the sole purpose of implementing, constructing, servicing and maintaining approved coastal zone management and/or restoration projects. Utilization of any and all rights derived under this lease by the mineral lessee, its agents, successors or assigns, shall not interfere with nor hinder the reasonable surface use by the Department of Natural Resources, its Offices or Commissions, as herein above reserved.

Applicant: THEOPHILUS OIL, GAS & LAND SERVICES, LLC

Bidder	Cash Payment	Price/Acre	Rental	Oil	Gas	Other

Legend

- 09080032
- Blocks
- Active_Leases
- DOQQ2004



TRACT 41085 - Portion of Block 1, East Cameron Area, Revised, Cameron Parish, Louisiana

All of the lands now or formerly constituting the beds and bottoms of all water bodies of every nature and description as to which title is vested in the State of Louisiana, together with all islands arising therein and other lands formed by accretion or by reliction, where allowed by law, excepting tax adjudicated lands, and not presently under mineral lease on August 12, 2009, situated in Cameron Parish, Louisiana, and more particularly described as follows: Beginning at a point having Coordinates of X = 1,475,515.00 and Y = 392,200.00; thence East 8,729.80 feet to a point having Coordinates of X = 1,484,244.80 and Y = 392,200.00; thence South approximately 10,332 feet to the Northeast corner of State Lease No. 1170, as amended, having a Coordinate of X = 1,484,244.80; thence Northwesterly along the meanders of the North boundary of said State Lease No. 1170 to a point of intersection with a North-South line having a Coordinate X = 1,475,515.00; thence North approximately 6,485 feet along said line to the point of beginning, **LESS AND EXCEPT** that portion, if any, of State Lease No. 1170, as amended, which may lie within the above described tract, containing approximately **421 acres**, all as more particularly outlined on a plat on file in the Office of Mineral Resources, Department of Natural Resources. All bearings, distances and coordinates are based on Louisiana Coordinate System of 1927, (North or South Zone), where applicable.

NOTE: The above description of the Tract nominated for lease has been provided and corrected, where required, exclusively by the nomination party. Any mineral lease selected from this Tract and awarded by the Louisiana State Mineral Board shall be without warranty of any kind, either express, implied, or statutory, including, but not limited to, the implied warranties of merchantability and fitness for a particular purpose. Should the mineral lease awarded by the Louisiana State Mineral Board be subsequently modified, cancelled or abrogated due to the existence of conflicting leases, operating agreements, private claims or other future obligations or conditions which may affect all or any portion of the leased Tract, it shall not relieve the Lessee of the obligation to pay any bonus due thereon to the Louisiana State Mineral Board, nor shall the Louisiana State Mineral Board be obligated to refund any consideration paid by the Lessor prior to such modification, cancellation, or abrogation, including, but not limited to, bonuses, rentals and royalties.

NOTE: The State of Louisiana does hereby reserve, and this lease shall be subject to, the imprescriptible right of surface use in the nature of a servitude in favor of the Department of Natural Resources, including its Offices and Commissions, for the sole purpose of implementing, constructing, servicing and maintaining approved coastal zone management and/or restoration projects. Utilization of any and all rights derived under this lease by the mineral lessee, its agents, successors or assigns, shall not interfere with nor hinder the reasonable surface use by the

Department of Natural Resources, its Offices or Commissions, as herein above reserved.

Applicant: THEOPHILUS OIL, GAS & LAND SERVICES, LLC

Bidder	Cash Payment	Price/Acre	Rental	Oil	Gas	Other

Legend

- 09080033
- Blocks
- Active_Leases

DOQQ2004

