

SPECIAL NOTICE

On Tuesday July 7, 2009, the Office of Mineral Resources on behalf of the State Mineral Board advertised in "The Notice of Publication", for receipt of sealed bids on or before **12:00 noon on Tuesday, August 11, 2009** for State Leases to be awarded upon **Tract Nos. 41072 through 41114, inclusive**, at its **August 12, 2009** Lease Sale. Within the said advertisement was an incorrect acreage. By virtue of this public notice, **Tract No. 41079, Catahoula Parish** is hereby corrected as follows:

TRACT - 41079 - Catahoula Parish, Louisiana

The State Mineral Board acting on behalf of the Avoyelles Parish School Board and the Catahoula Parish School Board, pursuant to Resolution(s) adopted by that (those) body(ies) and in accordance with Louisiana Revised Statutes 30:121-136 and 151-156, as amended, and Article XIV, Section 16(A)(9) and (B) of the Louisiana Constitution of 1974, as same may be continued and promulgated in proper statutory form and, further, amended from time to time, advertises the lands not under mineral lease on August 12, 2009, excluding the beds and bottoms of all navigable water bodies located within the following: All of Section 16, Township 4 North, Range 5 East in Catahoula Parish, Louisiana, containing approximately **641.40 acres**, all as more particularly outlined on a plat on file in the Office of Mineral Resources, Department of Natural Resources. All bearings, distances and coordinates are based on Louisiana Coordinate System of 1927, (North or South Zone).

NOTE: The above description of the Tract nominated for lease has been provided and corrected, where required, exclusively by the nomination party. Any mineral lease selected from this Tract and awarded by the Louisiana State Mineral Board shall be without warranty of any kind, either express, implied, or statutory, including, but not limited to, the implied warranties of merchantability and fitness for a particular purpose. Should the mineral lease awarded by the Louisiana State Mineral Board be subsequently modified, cancelled or abrogated due to the existence of conflicting leases, operating agreements, private claims or other future obligations or conditions which may affect all or any portion of the leased Tract, it shall not relieve the Lessee of the obligation to pay any bonus due thereon to the Louisiana State Mineral Board, nor shall the Louisiana State Mineral Board be obligated to refund any consideration paid by the Lessor prior to such modification, cancellation, or abrogation, including, but not limited to, bonuses, rentals and royalties.

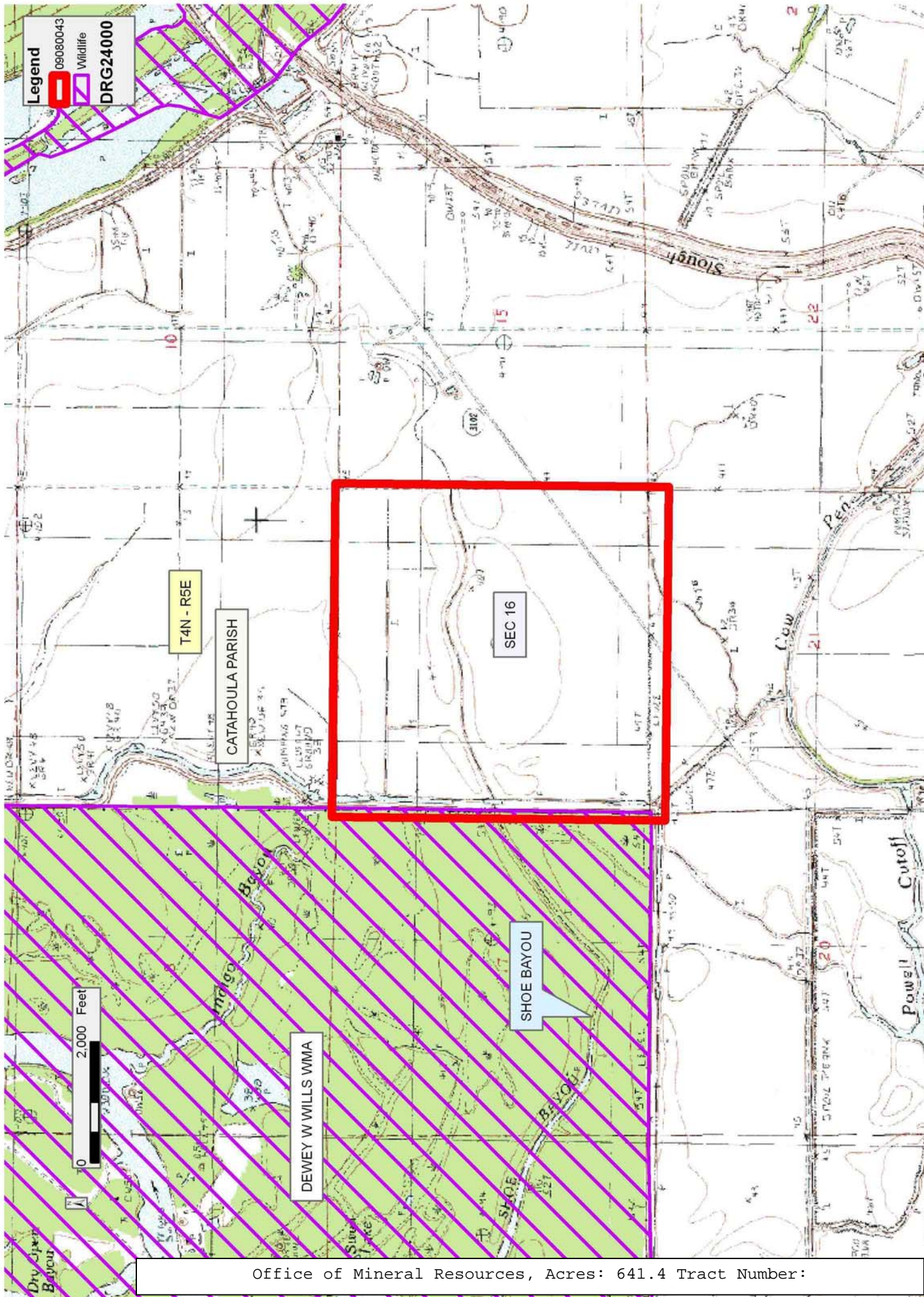
NOTE: Lessors acknowledge that said Township 4 North, Range 5 East is located 8.67% in Avoyelles Parish and 91.33% in Catahoula Parish, and Lessee is authorized and directed to pay any and all rentals and royalties which may accrue under the terms of this lease to Lessors separately and respectively in the following proportions: Avoyelles

Parish School Board - 8.67% and Catahoula Parish School Board - 91.33%, and further, prospective bidders are hereby placed on notice that execution by the State Mineral Board of oil, gas and mineral leases on behalf of the Avoyelles and Catahoula Parish School Board(s) as above set forth on the above described Section 16 shall not be construed as a waiver by the State Mineral Board of any rights that it may have to lease for and on behalf of the State of Louisiana any navigable water bottoms that might be included within said Section 16.

NOTE: There shall be no surface operations on the property without the prior written consent of Lessor.

Applicant: THEOPHILUS OIL, GAS & LAND SERVICES, LLC

Bidder	Cash Payment	Price/Acre	Rental	Oil	Gas	Other



Legend
090800043
Wildlife
DRG24000

T4N - R5E

CATAHOULA PARISH

DEWEY WILLS WMA

SEC 16

SHOE BAYOU

Slough

Cow

Powell Cutoff

2,000 Feet