

TRACT 37739 - Cameron Parish, Louisiana

A portion of all State owned lands, including high and marsh lands and land now or formerly constituting the beds and bottoms of any water body, within the boundaries of the Rockefeller Wildlife Refuge and Game Preserve, not presently under mineral lease by the State of Louisiana on August 10, 2005, situated in Cameron Parish, Louisiana, and described as follows: Beginning at a point within the Rockefeller Wildlife Management Area and Game Preserve having Coordinates of X = 1,575,010.00 and Y = 360,201.43; thence West 14,841.91 feet to the Northernmost corner of State Lease No. 18172, said corner also being a point on the Eastern boundary of State Lease No. 2340, as amended, having Coordinates of X = 1,560,168.09 and Y = 360,201.43; thence along the Eastern boundary of said State Lease No. 2340, as amended, the following courses: North 08 degrees 36 minutes 56 seconds East 79.46 feet to a point, North 12 degrees 46 minutes 43 seconds East 497.32 feet to a point, North 22 degrees 26 minutes 34 seconds East 497.69 feet to a point, North 34 degrees 00 minutes 27 seconds East 500.62 feet to a point, North 44 degrees 35 minutes 37 seconds East 498.52 feet to a point, North 55 degrees 54 minutes 33 seconds East 501.47 feet to a point, North 11 degrees 32 minutes 06 seconds West 626.58 feet to a point, North 24 degrees 19 minutes 52 seconds West 631.05 feet to a point, North 38 degrees 03 minutes 59 seconds West 308.14 feet to a point, North 64 degrees 13 minutes 50 seconds East 166.57 feet to a point, North 74 degrees 10 minutes 38 seconds East 972.12 feet to a point, North 180.00 feet to a point, West 1,320.00 feet to a point, and North 5,931.97 to the Northernmost corner of said State Lease No. 2340, as amended, having Coordinates of X = 1,560,715.29 and Y = 370,157.03; thence North 280.97 feet to a point having Coordinates of X = 1,560,715.29 and Y = 370,438.00; thence East 2,888.71 feet to the Southwest corner of State Lease No. 18589 having Coordinates of X = 1,563,604.00 and Y = 370,438.00; thence East approximately 4500 feet along the South boundary of said State Lease No. 18589 to its Southernmost Southeast corner, being also a point on the Western boundary of State Lease No. 2038, as amended, and having a Coordinate of Y = 370,438.00; thence along the Western and Southern boundary of said State Lease No. 2038, as amended, the following courses: Southerly approximately 3,227 feet to a point, North 89 degrees 16 minutes 36 seconds West approximately 6,011 to a point, South 00 degrees 43 minutes 24 Seconds West 1,742.05 feet to a point, South 89 degrees 16 minutes 36 seconds East 5,280.00 feet to a point, South 00 degrees 43 minutes 24 seconds West 1,320.00 feet to a point, South 89 degrees 16 minutes 36 seconds East 7,309.31 feet to a point being the Southernmost Southeast corner of said State Lease No. 2038, as amended, and being also the Southwest corner of State Lease No. 18346; thence Easterly approximately 403 feet along the South boundary of said State Lease No. 18346 to a point having a Coordinate of X = 1,575,010.00; thence South approximately 3,860 feet to the point of beginning, **LESS AND EXCEPT** any portion of State Lease No. 2038, State Lease No. 2340, State Lease No. 18346 and State Lease No. 18589 that may lie within the above described tract, containing approximately **2,049 acres**, all as more particularly

outlined on a plat on file in the Office of Mineral Resources, Department of Natural Resources. All bearings, distances and coordinates are based on Louisiana Coordinate System of 1927, (South Zone).

NOTE: The above description of the Tract nominated for lease has been provided and corrected, where required, exclusively by the nomination party. Any mineral lease selected from this Tract and awarded by the Louisiana State Mineral Board shall be without warranty of any kind, either express, implied, or statutory, including, but not limited to, the implied warranties of merchantability and fitness for a particular purpose. Should the mineral lease awarded by the Louisiana State Mineral Board be subsequently modified, cancelled or abrogated due to the existence of conflicting leases, operating agreements, private claims or other future obligations or conditions which may affect all or any portion of the leased Tract, it shall not relieve the Lessee of the obligation to pay any bonus due thereon to the Louisiana State Mineral Board, nor shall the Louisiana State Mineral Board be obligated to refund any consideration paid by the Lessor prior to such modification, cancellation, or abrogation, including, but not limited to, bonuses, rentals and royalties.

NOTE: The Office of Mineral Resources will require a minimum bonus of \$350 per acre and a minimum royalty of 25%.

NOTE: This tract is located in The Rockefeller Wildlife Refuge and Game Preserve Area under the jurisdiction of the Louisiana Department of Wildlife and Fisheries which has promulgated rules and regulations for the protection of game and wildlife on the aforesaid Tract and, therefore, shall be subject to said rules and regulations, a copy of which shall be attached to the mineral lease. In addition to the specific rules and regulations applicable, the following shall apply regarding operations under this mineral lease:

1. Compliance with the Rockefeller mineral regulations shall be required.
2. No surface activities will be allowed in the vicinity of the Headquarters and associated facilities without written authorization from the Department.
3. Board road access will be required when feasible as determined by the Department.
4. In the event that board road access is not feasible, existing canals and waterways will be utilized to access proposed well locations. A maximum of 350 feet of new canal dredging will be allowed for individual well locations.
5. Compensatory mitigation will be required for unavoidable wetland losses.
6. No discharges will be allowed, including produced waters and drilling fluids. A containerized closed loop system will be required.

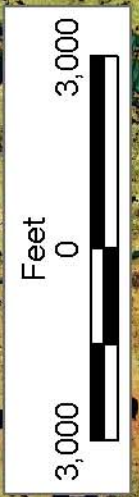
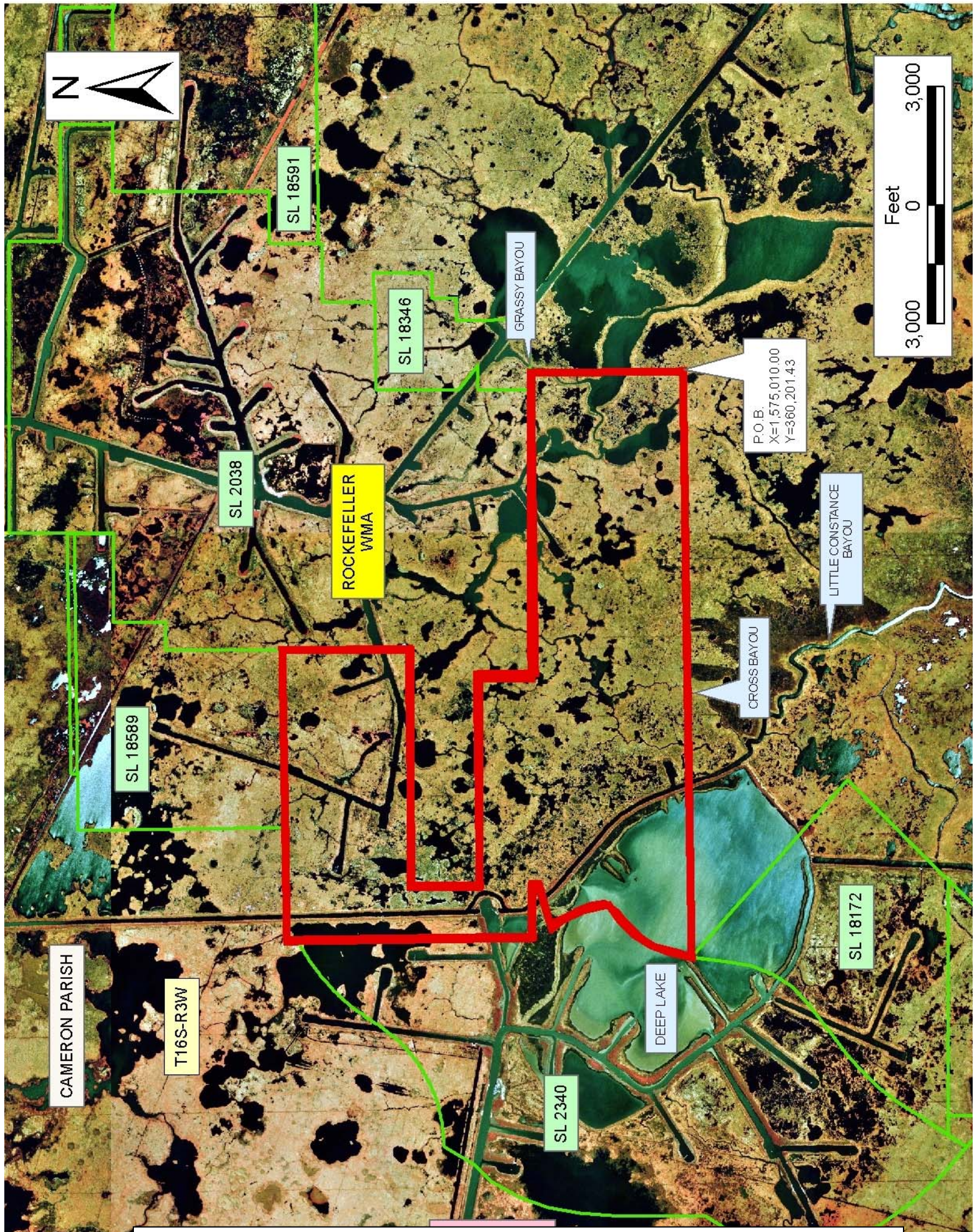
7. Seasonal restrictions may be imposed within specific management units dependent upon wildlife population levels.

Prior to submitting applications for wetland permits to Federal and State Permitting agencies, the leasehold shall coordinate project details with the Department of Wildlife and Fisheries. Contact person for the Department will be Mike Windham at (504) 568-5886.

NOTE: The State of Louisiana does hereby reserve, and this lease shall be subject to, the imprescriptible right of surface use in the nature of a servitude in favor of the Department of Natural Resources, including its Offices and Commissions, for the sole purpose of implementing, constructing, servicing and maintaining approved coastal zone management and/or restoration projects. Utilization of any and all rights derived under this lease by the mineral lessee, its agents, successors or assigns, shall not interfere with nor hinder the reasonable surface use by the Department of Natural Resources, its Offices or Commissions, as herein above reserved.

Applicant: C. J. HALEY

Bidder	Cash Payment	Price/Acre	Rental	Oil	Gas	Other



P.O. B.
X=1,575,010.00
Y=360,201.43

SL 18591

SL 18346

GRASSY BAYOU

SL 2038

ROCKEFELLER
WMA

LITTLE CONSTANCE
BAYOU

SL 18589

CROSS BAYOU

CAMERON PARISH

T16S-R3W

SL 18172

DEEP LAKE

SL 2340

TRACT 37740 - Vermilion Parish, Louisiana

A portion of all State owned lands, including high and marsh lands and land now or formerly constituting the beds and bottoms of any water body, within the boundaries of the Rockefeller Wildlife Refuge and Game Preserve, not presently under mineral lease by the State of Louisiana on August 10, 2005, situated in Vermilion Parish, Louisiana, and described as follows: Beginning at an interior corner of the Rockefeller Wildlife Management Area and Game Preserve boundary having Coordinates of X = 1,596,932.35 and Y = 367,028.38; thence along the boundary of said Rockefeller Wildlife Management Area and Game Preserve the following courses: Easterly approximately 5,276 feet, Southerly approximately 1,320 feet, Easterly approximately 5,282 feet, Southerly approximately 10,574 feet to a point; thence Westerly approximately 5,271 feet to an interior corner of Rockefeller Wildlife Management Area and Game Preserve; thence along the boundary of said Rockefeller Wildlife Management Area and Game Preserve the following courses: Northerly approximately 2,649 feet, Westerly approximately 5,275 feet, and Northerly approximately 9,262 feet to the point of beginning, **LESS AND EXCEPT** any portion, if any, of the above described tract that may lie outside of the Rockefeller Wildlife Management Area and Game Preserve, containing approximately **2,404.21 acres**, all as more particularly outlined on a plat on file in the Office of Mineral Resources, Department of Natural Resources. All bearings, distances and coordinates are based on Louisiana Coordinate System of 1927, (South Zone).

NOTE: The above description of the Tract nominated for lease has been provided and corrected, where required, exclusively by the nomination party. Any mineral lease selected from this Tract and awarded by the Louisiana State Mineral Board shall be without warranty of any kind, either express, implied, or statutory, including, but not limited to, the implied warranties of merchantability and fitness for a particular purpose. Should the mineral lease awarded by the Louisiana State Mineral Board be subsequently modified, cancelled or abrogated due to the existence of conflicting leases, operating agreements, private claims or other future obligations or conditions which may affect all or any portion of the leased Tract, it shall not relieve the Lessee of the obligation to pay any bonus due thereon to the Louisiana State Mineral Board, nor shall the Louisiana State Mineral Board be obligated to refund any consideration paid by the Lessor prior to such modification, cancellation, or abrogation, including, but not limited to, bonuses, rentals and royalties.

NOTE: The Office of Mineral Resources will require a minimum bonus of \$350 per acre and a minimum royalty of 25%.

NOTE: This tract is located in The Rockefeller Wildlife Refuge and Game Preserve Area under the jurisdiction of the Louisiana Department of Wildlife and Fisheries which has promulgated rules and regulations for the protection of game and wildlife on the aforesaid Tract and, therefore, shall be subject to said rules and regulations, a copy of which shall be

attached to the mineral lease. In addition to the specific rules and regulations applicable, the following shall apply regarding operations under this mineral lease:

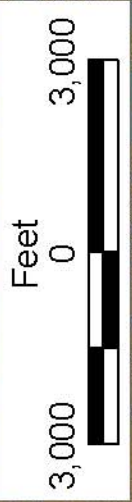
1. Compliance with the Rockefeller mineral regulations shall be required.
2. No surface activities will be allowed in the vicinity of the Headquarters and associated facilities without written authorization from the Department.
3. Board road access will be required when feasible as determined by the Department.
4. In the event that board road access is not feasible, existing canals and waterways will be utilized to access proposed well locations. A maximum of 350 feet of new canal dredging will be allowed for individual well locations.
5. Compensatory mitigation will be required for unavoidable wetland losses.
6. No discharges will be allowed, including produced waters and drilling fluids. A containerized closed loop system will be required.
7. Seasonal restrictions may be imposed within specific management units dependent upon wildlife population levels.

Prior to submitting applications for wetland permits to Federal and State Permitting agencies, the leasehold shall coordinate project details with the Department of Wildlife and Fisheries. Contact person for the Department will be Mike Windham at (504) 568-5886.

NOTE: The State of Louisiana does hereby reserve, and this lease shall be subject to, the imprescriptible right of surface use in the nature of a servitude in favor of the Department of Natural Resources, including its Offices and Commissions, for the sole purpose of implementing, constructing, servicing and maintaining approved coastal zone management and/or restoration projects. Utilization of any and all rights derived under this lease by the mineral lessee, its agents, successors or assigns, shall not interfere with nor hinder the reasonable surface use by the Department of Natural Resources, its Offices or Commissions, as herein above reserved.

Applicant: C. J. HALEY

Bidder	Cash Payment	Price/Acre	Rental	Oil	Gas	Other



VERMILION PARISH

T15S - R2W

T16S - R2W

FLOATING
TURF BAYOU

ROCKEFELLER
WMA

P.O.B.
X=1,596,932.35
Y=367,028.38

CAMERON
PARISH

TRACT 37741 - Cameron Parish, Louisiana

A portion of all State owned lands, including high and marsh lands and land now or formerly constituting the beds and bottoms of any water body, within the boundaries of the Rockefeller Wildlife Refuge and Game Preserve, not presently under mineral lease by the State of Louisiana on August 10, 2005, situated in Cameron Parish, Louisiana, and described as follows: Beginning at a point within the Rockefeller Wildlife Management Area and Game Preserve having Coordinates of X = 1,575,010.00 and Y = 353,664.30; thence North approximately 10,397 feet to a point on the South line of State Lease No. 18346 having a Coordinates of X = 1,575,010.00; thence Easterly approximately 1,360 feet along the South line of said State Lease No. 18346 to its most Southerly Southeast corner having Coordinates of X = 1,576,370.00 and Y = 364,044.06; thence East 9,130.00 feet to a point having Coordinates of X = 1,585,500.00 and Y = 364,044.06; thence South 10,379.76 feet to a point having Coordinates of X = 1,585,500.00 and Y = 353,664.30; thence West 10,490.00 feet to the point of beginning, containing approximately **2,499.63 acres**, all as more particularly outlined on a plat on file in the Office of Mineral Resources, Department of Natural Resources. All bearings, distances and coordinates are based on Louisiana Coordinate System of 1927, (South Zone).

NOTE: The above description of the Tract nominated for lease has been provided and corrected, where required, exclusively by the nomination party. Any mineral lease selected from this Tract and awarded by the Louisiana State Mineral Board shall be without warranty of any kind, either express, implied, or statutory, including, but not limited to, the implied warranties of merchantability and fitness for a particular purpose. Should the mineral lease awarded by the Louisiana State Mineral Board be subsequently modified, cancelled or abrogated due to the existence of conflicting leases, operating agreements, private claims or other future obligations or conditions which may affect all or any portion of the leased Tract, it shall not relieve the Lessee of the obligation to pay any bonus due thereon to the Louisiana State Mineral Board, nor shall the Louisiana State Mineral Board be obligated to refund any consideration paid by the Lessor prior to such modification, cancellation, or abrogation, including, but not limited to, bonuses, rentals and royalties.

NOTE: The Office of Mineral Resources will require a minimum bonus of \$350 per acre and a minimum royalty of 25%.

NOTE: This tract is located in The Rockefeller Wildlife Refuge and Game Preserve Area under the jurisdiction of the Louisiana Department of Wildlife and Fisheries which has promulgated rules and regulations for the protection of game and wildlife on the aforesaid Tract and, therefore, shall be subject to said rules and regulations, a copy of which shall be attached to the mineral lease. In addition to the specific rules and regulations applicable, the following shall apply regarding operations under this mineral lease:

1. Compliance with the Rockefeller mineral regulations shall be required.
2. No surface activities will be allowed in the vicinity of the Headquarters and associated facilities without written authorization from the Department.
3. Board road access will be required when feasible as determined by the Department.
4. In the event that board road access is not feasible, existing canals and waterways will be utilized to access proposed well locations. A maximum of 350 feet of new canal dredging will be allowed for individual well locations.
5. Compensatory mitigation will be required for unavoidable wetland losses.
6. No discharges will be allowed, including produced waters and drilling fluids. A containerized closed loop system will be required.
7. Seasonal restrictions may be imposed within specific management units dependent upon wildlife population levels.

Prior to submitting applications for wetland permits to Federal and State Permitting agencies, the leasehold shall coordinate project details with the Department of Wildlife and Fisheries. Contact person for the Department will be Mike Windham at (504) 568-5886.

NOTE: The State of Louisiana does hereby reserve, and this lease shall be subject to, the imprescriptible right of surface use in the nature of a servitude in favor of the Department of Natural Resources, including its Offices and Commissions, for the sole purpose of implementing, constructing, servicing and maintaining approved coastal zone management and/or restoration projects. Utilization of any and all rights derived under this lease by the mineral lessee, its agents, successors or assigns, shall not interfere with nor hinder the reasonable surface use by the Department of Natural Resources, its Offices or Commissions, as herein above reserved.

Bidder	Cash Payment	Price/Acre	Rental	Oil	Gas	Other

Applicant: C. J. HALEY



ROCKEFELLER
WMA

CAMERON PARISH

JOSEPHINE BAYOU

GRASSY LAKE

SL 18346

SL 2038

GRASSY B

T16S-R3W

BLUE LAKE

CONSTANCE BAYOU

P.O.B.
X=1,575,010.00
Y=353,664.30



TRACT 37742 - Cameron Parish, Louisiana

A portion of all State owned lands, including high and marsh lands and land now or formerly constituting the beds and bottoms of any water body, within the boundaries of the Rockefeller Wildlife Refuge and Game Preserve, not presently under mineral lease by the State of Louisiana on August 10, 2005, situated in Cameron Parish, Louisiana, and described as follows: Beginning at a point within the Rockefeller Wildlife Management Area and Game Preserve having Coordinates of X = 1,575,010.00 and Y = 360,201.43; thence South 6,537.13 feet to a point having Coordinates of X = 1,575,010.00 and Y = 353,664.30; thence West 12,982.89 feet to the most Southerly Southeast corner of State Lease No. 18172, said point also being the most Easterly corner of State Lease No. 18174 having Coordinates of X = 1,562,027.11 and Y = 353,664.30; thence along the boundary of said State Lease No. 18172 the following courses: North 45 degrees 29 minutes 03 seconds East 3,589.95 feet to a point having Coordinates of X = 1,564,586.95 and Y = 356,181.24 and North 47 degrees 42 minutes 17 seconds West 5,973.96 feet to its most Northern point, said point also being on the Eastern boundary of State Lease No. 2340, as amended, having Coordinates of X = 1,560,168.09 and Y = 360,201.43; thence East 14,841.91 feet to the point of beginning, containing approximately **1,842.07 acres**, all as more particularly outlined on a plat on file in the Office of Mineral Resources, Department of Natural Resources. All bearings, distances and coordinates are based on Louisiana Coordinate System of 1927, (South Zone).

NOTE: The above description of the Tract nominated for lease has been provided and corrected, where required, exclusively by the nomination party. Any mineral lease selected from this Tract and awarded by the Louisiana State Mineral Board shall be without warranty of any kind, either express, implied, or statutory, including, but not limited to, the implied warranties of merchantability and fitness for a particular purpose. Should the mineral lease awarded by the Louisiana State Mineral Board be subsequently modified, cancelled or abrogated due to the existence of conflicting leases, operating agreements, private claims or other future obligations or conditions which may affect all or any portion of the leased Tract, it shall not relieve the Lessee of the obligation to pay any bonus due thereon to the Louisiana State Mineral Board, nor shall the Louisiana State Mineral Board be obligated to refund any consideration paid by the Lessor prior to such modification, cancellation, or abrogation, including, but not limited to, bonuses, rentals and royalties.

NOTE: The Office of Mineral Resources will require a minimum bonus of \$350 per acre and a minimum royalty of 25%.

NOTE: This tract is located in The Rockefeller Wildlife Refuge and Game Preserve Area under the jurisdiction of the Louisiana Department of Wildlife and Fisheries which has promulgated rules and regulations for the protection of game and wildlife on the aforesaid Tract and, therefore, shall be subject to said rules and regulations, a copy of which shall be

attached to the mineral lease. In addition to the specific rules and regulations applicable, the following shall apply regarding operations under this mineral lease:

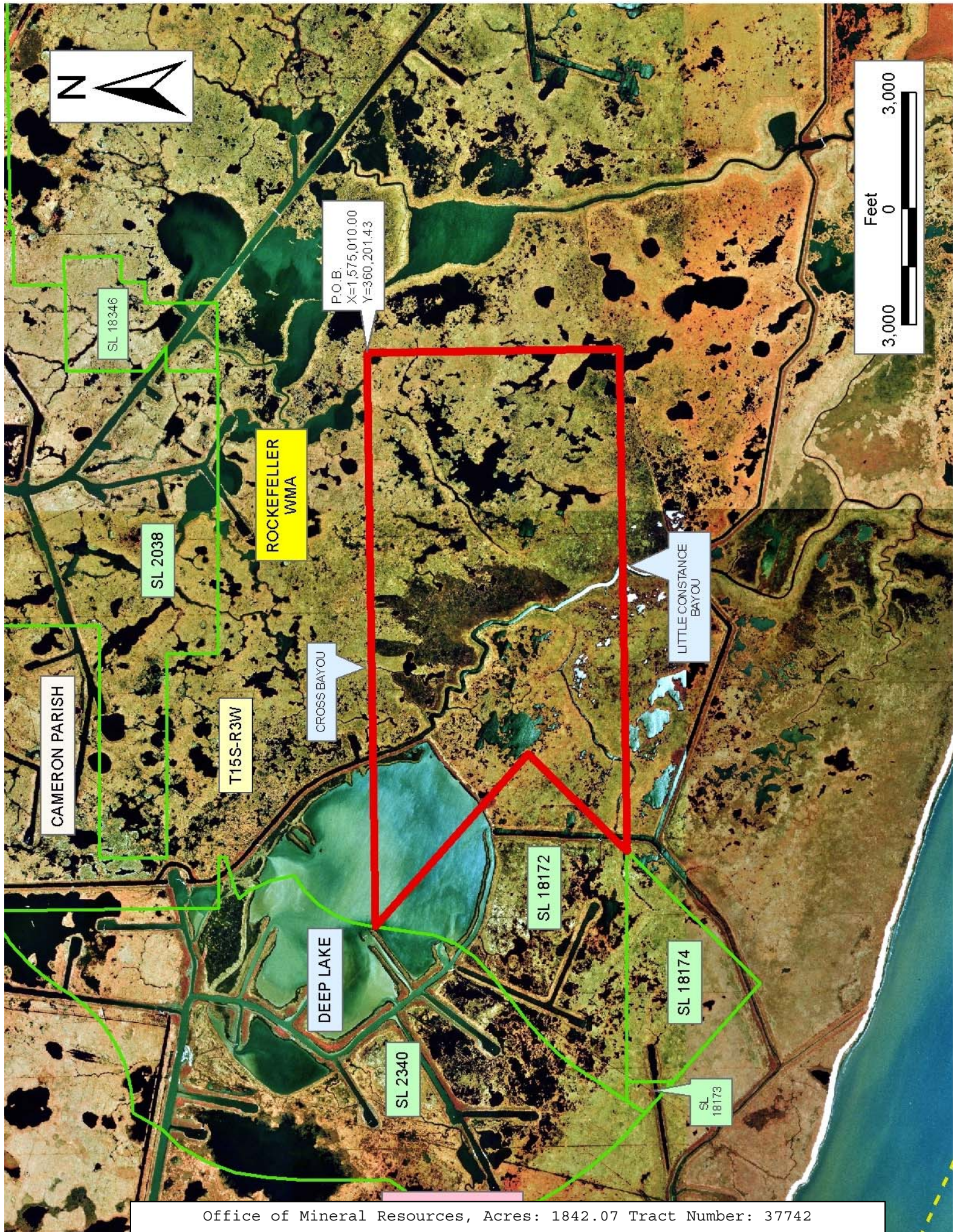
1. Compliance with the Rockefeller mineral regulations shall be required.
2. No surface activities will be allowed in the vicinity of the Headquarters and associated facilities without written authorization from the Department.
3. Board road access will be required when feasible as determined by the Department.
4. In the event that board road access is not feasible, existing canals and waterways will be utilized to access proposed well locations. A maximum of 350 feet of new canal dredging will be allowed for individual well locations.
5. Compensatory mitigation will be required for unavoidable wetland losses.
6. No discharges will be allowed, including produced waters and drilling fluids. A containerized closed loop system will be required.
7. Seasonal restrictions may be imposed within specific management units dependent upon wildlife population levels.

Prior to submitting applications for wetland permits to Federal and State Permitting agencies, the leasehold shall coordinate project details with the Department of Wildlife and Fisheries. Contact person for the Department will be Mike Windham at (504) 568-5886.

NOTE: The State of Louisiana does hereby reserve, and this lease shall be subject to, the imprescriptible right of surface use in the nature of a servitude in favor of the Department of Natural Resources, including its Offices and Commissions, for the sole purpose of implementing, constructing, servicing and maintaining approved coastal zone management and/or restoration projects. Utilization of any and all rights derived under this lease by the mineral lessee, its agents, successors or assigns, shall not interfere with nor hinder the reasonable surface use by the Department of Natural Resources, its Offices or Commissions, as herein above reserved.

Applicant: C. J. HALEY

Bidder	Cash Payment	Price/Acre	Rental	Oil	Gas	Other



P.O.B.
X=1,575,010.00
Y=360,201.43

SL 18346

ROCKEFELLER
WMA

SL 2038

CAMERON PARISH

T15S-R3W

CROSS BAYOU

LITTLE CONSTANCE
BAYOU

DEEP LAKE

SL 18172

SL 18174

SL 2340

SL 18173