

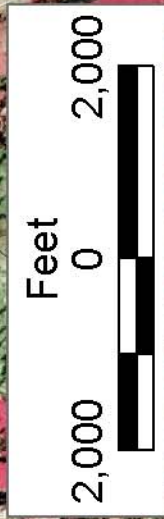
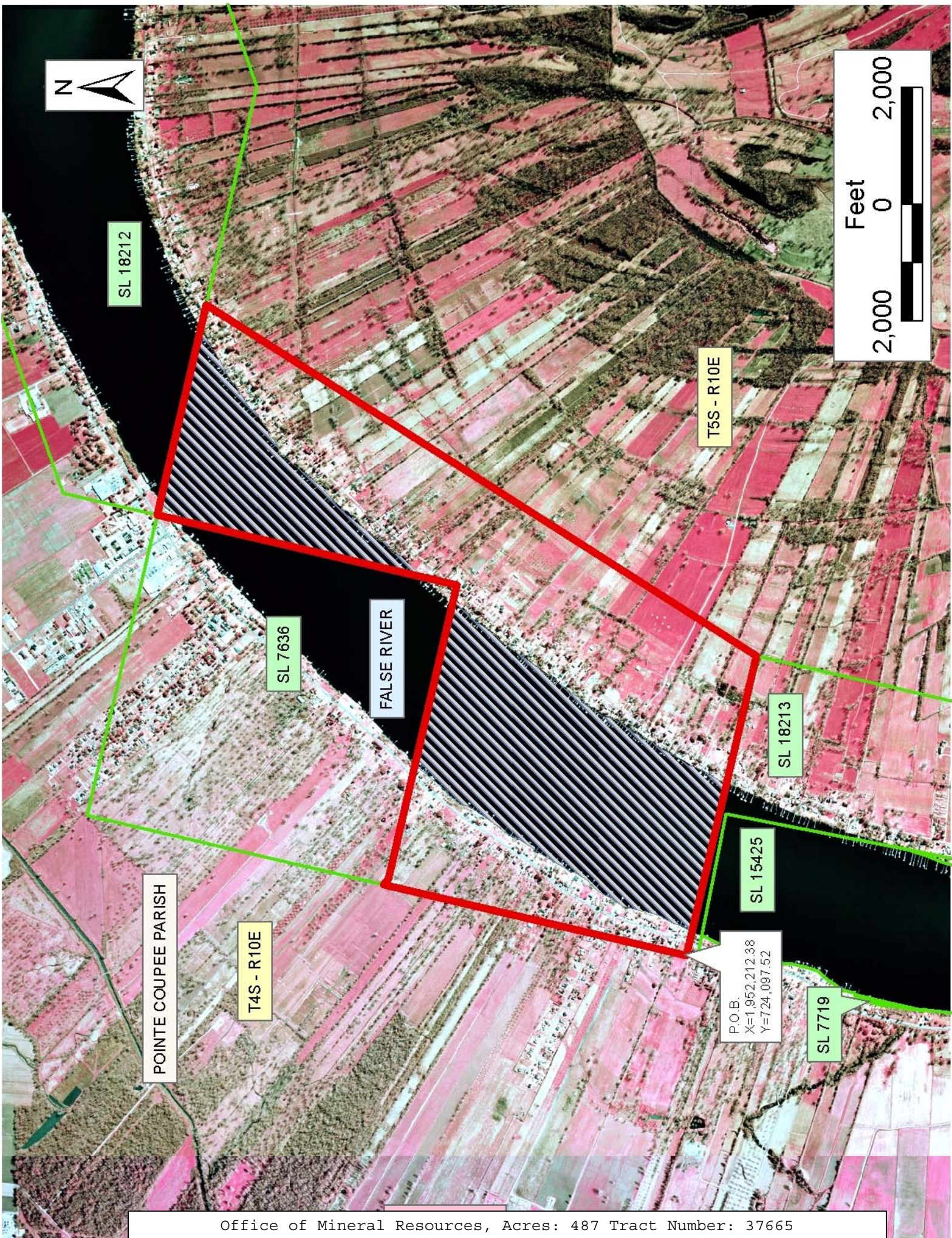
TRACT 37665 - Pointe Coupee Parish, Louisiana

All of the lands now or formerly constituting the beds and bottoms of all water bodies of every nature and description the title of which vests in the State of Louisiana, together with all islands arising therein and other lands formed by accretion or by reliction, where allowed by law, excepting tax adjudicated lands, and not presently under mineral lease on August 10, 2005, situated in Pointe Coupee Parish, Louisiana, and more particularly described as follows: Beginning at the most Northerly Northwest corner of State Lease No. 18213 having Coordinates of X = 1,952,212.38 and Y = 724,097.52; thence North 14 degrees 00 minutes 00 seconds East 5,332.99 feet to the Southwest corner of State Lease No. 7636, as amended, having Coordinates of X = 1,953,502.55 and Y = 729,272.10; thence South 48 degrees 53 minutes 00 second East 116.24 feet and South 76 degrees 00 minutes 00 seconds East 5,176.55 feet along the South boundary of said State Lease No. 7636, to its Southeast corner having Coordinates of X = 1,958,612.90 and Y = 727,943.34; thence North 14 degrees 00 minutes 00 seconds East 5,280.00 feet along the East boundary of said State Lease No. 7636, as amended, to its Northeast corner, also being the Southwest corner of State Lease No. 18212 having Coordinates of X = 1,959,890.24 and Y = 733,066.50; thence South 76 degrees 00 minutes 00 second East 3,700.00 feet along the South boundary of said State Lease No. 18212 to a point having Coordinates of X = 1,963,480.34 and Y = 732,171.38; thence South 33 degrees 18 minutes 34 seconds West 11,189.44 feet to the Northeast corner of State Lease No. 18213 having Coordinates of X = 1,957,335.55 and Y = 722,820.17; thence North 76 degrees 00 minutes 00 second West 5,280.00 feet along the North boundary of said State Lease No. 18213 to the point of beginning, **LESS AND EXCEPT** those portions, if any, of State Lease No. 7719, as amended, and State Lease No. 15425, as amended, that may lie within the above described tract, containing approximately **487 acres**, all as more particularly outlined on a plat on file in the Office of Mineral Resources, Department of Natural Resources. All bearings, distances and coordinates are based on Louisiana Coordinate System of 1927, (North or South Zone), where applicable.

NOTE: The above description of the Tract nominated for lease has been provided and corrected, where required, exclusively by the nomination party. Any mineral lease selected from this Tract and awarded by the Louisiana State Mineral Board shall be without warranty of any kind, either express, implied, or statutory, including, but not limited to, the implied warranties of merchantability and fitness for a particular purpose. Should the mineral lease awarded by the Louisiana State Mineral Board be subsequently modified, cancelled or abrogated due to the existence of conflicting leases, operating agreements, private claims or other future obligations or conditions which may affect all or any portion of the leased Tract, it shall not relieve the Lessee of the obligation to pay any bonus due thereon to the Louisiana State Mineral Board, nor shall the Louisiana State Mineral Board be obligated to refund any consideration paid by the Lessor prior to such modification, cancellation, or abrogation, including, but not limited to, bonuses, rentals and royalties.

Applicant: LARRY S. MINTER, INC.

Bidder	Cash Payment	Price/Acre	Rental	Oil	Gas	Other



SL 18212

T5S - R10E

SL 7636

FALSE RIVER

SL 18213

POINTE COUPEE PARISH

T4S - R10E

SL 15425

P.O.B.
X=1,952,212.38
Y=724,097.52

SL 7719

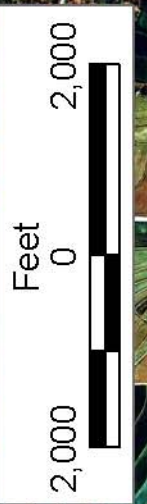
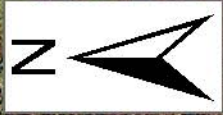
TRACT 37666 - Jefferson Davis Parish, Louisiana

All of the lands now or formerly constituting the beds and bottoms of all water bodies of every nature and description the title of which vests in the State of Louisiana, together with all islands arising therein and other lands formed by accretion or by reliction, where allowed by law, excepting tax adjudicated lands, and not presently under mineral lease on August 10, 2005, situated in Jefferson Davis Parish, Louisiana, and more particularly described as follows: Beginning at a point having Coordinates of X = 1,486,400.00 and Y = 634,000.00; thence West 5,400.00 feet to a point having Coordinates of X = 1,481,000.00 and Y = 634,000.00; thence North 8,500.00 feet to a point having Coordinates of X = 1,481,000.00 and Y = 642,500.00; thence East 5,400.00 feet to a point having Coordinates of X = 1,486,400.00 and Y = 642,500.00; thence South 2,085.53 feet to a point on the North line of State Lease No. 16504, as amended, having Coordinates of X = 1,486,400.00 and Y = 640,414.47; thence Northwesterly, Southwesterly and Southeasterly along the boundary of said State Lease No. 16504 the following courses: North 73 degrees 18 minutes 28 seconds West 351.75 feet, South 16 degrees 41 minutes 32 seconds West 3,810.00 feet, and South 73 degrees 18 minutes 28 seconds East 1,494.24 feet to a point on the South line of said State Lease No. 16504 having Coordinates of X = 1,486,400.00 and Y = 636,436.86; thence South 2,436.86 feet to the point of beginning, containing approximately **11.50 acres**, all as more particularly outlined on a plat on file in the Office of Mineral Resources, Department of Natural Resources. All bearings, distances and coordinates are based on Louisiana Coordinate System of 1927, (North or South Zone), where applicable.

NOTE: The above description of the Tract nominated for lease has been provided and corrected, where required, exclusively by the nomination party. Any mineral lease selected from this Tract and awarded by the Louisiana State Mineral Board shall be without warranty of any kind, either express, implied, or statutory, including, but not limited to, the implied warranties of merchantability and fitness for a particular purpose. Should the mineral lease awarded by the Louisiana State Mineral Board be subsequently modified, cancelled or abrogated due to the existence of conflicting leases, operating agreements, private claims or other future obligations or conditions which may affect all or any portion of the leased Tract, it shall not relieve the Lessee of the obligation to pay any bonus due thereon to the Louisiana State Mineral Board, nor shall the Louisiana State Mineral Board be obligated to refund any consideration paid by the Lessor prior to such modification, cancellation, or abrogation, including, but not limited to, bonuses, rentals and royalties.

Applicant: S&R RESOURCES, INC.

Bidder	Cash Payment	Price/Acre	Rental	Oil	Gas	Other



JEFFERSON DAVIS PARISH

T7S - R6W

COW BAYOU

BAYOU DUPONT

SL 16504

P.O.B.
X=1,486,400.00
Y=634,000.00

SERPENT BAYOU



TRACT 37667 - Jefferson Davis Parish, Louisiana

All of the lands now or formerly constituting the beds and bottoms of all water bodies of every nature and description the title of which vests in the State of Louisiana, together with all islands arising therein and other lands formed by accretion or by reliction, where allowed by law, excepting tax adjudicated lands, and not presently under mineral lease on August 10, 2005, situated in Jefferson Davis Parish, Louisiana, and more particularly described as follows: Beginning at a point having Coordinates of X = 1,475,200.00 and Y = 634,000.00; thence East 11,200.00 feet to a point having Coordinates of X = 1,486,400.00 and Y = 634,000.00; thence South 7,346.48 feet to a point having Coordinates of X = 1,486,400.00 and Y = 626,653.52; thence North 89 degrees 02 minutes 07 seconds West 11,201.59 feet to a point having Coordinates of X = 1,475,200.00 and Y = 626,842.12; thence North 7,157.88 feet to the point of beginning, **LESS AND EXCEPT**, any portion of State Lease No. 16505 that may lie within the above describe tract, containing approximately **21.50 acres**, all as more particularly outlined on a plat on file in the Office of Mineral Resources, Department of Natural Resources. All bearings, distances and coordinates are based on Louisiana Coordinate System of 1927, (North or South Zone), where applicable.

NOTE: The above description of the Tract nominated for lease has been provided and corrected, where required, exclusively by the nomination party. Any mineral lease selected from this Tract and awarded by the Louisiana State Mineral Board shall be without warranty of any kind, either express, implied, or statutory, including, but not limited to, the implied warranties of merchantability and fitness for a particular purpose. Should the mineral lease awarded by the Louisiana State Mineral Board be subsequently modified, cancelled or abrogated due to the existence of conflicting leases, operating agreements, private claims or other future obligations or conditions which may affect all or any portion of the leased Tract, it shall not relieve the Lessee of the obligation to pay any bonus due thereon to the Louisiana State Mineral Board, nor shall the Louisiana State Mineral Board be obligated to refund any consideration paid by the Lessor prior to such modification, cancellation, or abrogation, including, but not limited to, bonuses, rentals and royalties.

Bidder	Cash Payment	Price/Acre	Rental	Oil	Gas	Other

Applicant: S&R RESOURCES, INC.



SL 16504

SERPENT BAYOU

JEFFERSON DAVIS PARISH

T7S - R6W

T8S - R6W

P.O.B.
X=1,475,200.00
Y=634,000.00

SL 16505

TRACT 37668 - Portion of Block 27, Chandeleur Sound Addition Area, Revised, St. Bernard Parish, Louisiana

All of the lands now or formerly constituting the beds and bottoms of all water bodies of every nature and description the title of which vests in the State of Louisiana, together with all islands arising therein and other lands formed by accretion or by reliction, where allowed by law, excepting tax adjudicated lands, and not presently under mineral lease on August 10, 2005, situated in St. Bernard Parish, Louisiana, and more particularly described as follows: Beginning at a point on the South line of Block 27, Chandeleur Sound Area Addition, Revised having Coordinates of X = 2,686,975.00 and Y = 499,330.00; thence North 9,384.30 feet to a point on the South line of State Lease No. 17387 having Coordinates of X = 2,686,975.00 and Y = 508,714.30; thence along the boundary of said State Lease No. 17387 the following courses and distances: East 1,579.94 feet, North 1,736.78 feet and North 51 degrees 30 minutes 32 seconds West 5,830.61 feet to the Northeast corner of said State Lease No. 17387, also being a point on the North line of said Block 27 having Coordinates of X = 2,683,991.29 and Y = 514,080.00; thence East 10,358.71 feet along the North line of said Block 27 to its Northeast corner having Coordinates of X = 2,694,350.00 and Y = 514,080.00; thence South 14,750.00 feet along the East line of said Block 27 to its Southeast corner having Coordinates of X = 2,694,350.00 and Y = 499,330.00; thence West 7,375.00 feet along the South line of said Block 27 to the point of beginning, containing approximately **2,492.75 acres**, all as more particularly outlined on a plat on file in the Office of Mineral Resources, Department of Natural Resources. All bearings, distances and coordinates are based on Louisiana Coordinate System of 1927, (North or South Zone), where applicable.

NOTE: The above description of the Tract nominated for lease has been provided and corrected, where required, exclusively by the nomination party. Any mineral lease selected from this Tract and awarded by the Louisiana State Mineral Board shall be without warranty of any kind, either express, implied, or statutory, including, but not limited to, the implied warranties of merchantability and fitness for a particular purpose. Should the mineral lease awarded by the Louisiana State Mineral Board be subsequently modified, cancelled or abrogated due to the existence of conflicting leases, operating agreements, private claims or other future obligations or conditions which may affect all or any portion of the leased Tract, it shall not relieve the Lessee of the obligation to pay any bonus due thereon to the Louisiana State Mineral Board, nor shall the Louisiana State Mineral Board be obligated to refund any consideration paid by the Lessor prior to such modification, cancellation, or abrogation, including, but not limited to, bonuses, rentals and royalties.

NOTE: The Office of Mineral Resources will require a minimum bonus of \$230 per acre and a minimum royalty of 23%.

NOTE: The State of Louisiana does hereby reserve, and this lease shall be subject to, the imprescriptible right of surface use in the nature of a

servitude in favor of the Department of Natural Resources, including its Offices and Commissions, for the sole purpose of implementing, constructing, servicing and maintaining approved coastal zone management and/or restoration projects. Utilization of any and all rights derived under this lease by the mineral lessee, its agents, successors or assigns, shall not interfere with nor hinder the reasonable surface use by the Department of Natural Resources, its Offices or Commissions, as herein above reserved.

NOTE: The Department of Wildlife and Fisheries has designated certain areas in the coastal waters of the State of Louisiana as Oyster Seed Bed Areas. The exact location of those Seed Bed Areas must be obtained from the Department of Wildlife and Fisheries and any work done under a mineral lease from the State of Louisiana may necessarily be conducted in conformity with the rules and regulations promulgated by the said Department of Wildlife and Fisheries for Oyster Seed Bed Areas.

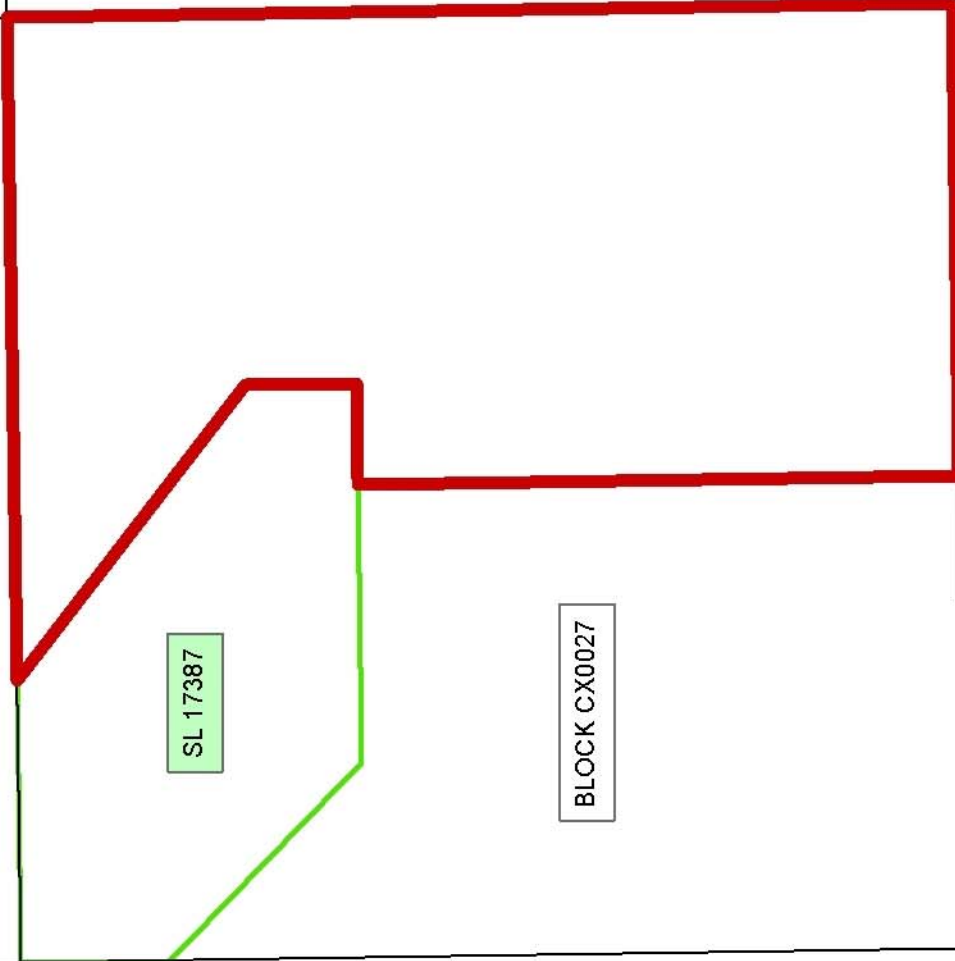
Applicant: KARE-SUE ENERGY, INC.

Bidder	Cash Payment	Price/Acre	Rental	Oil	Gas	Other



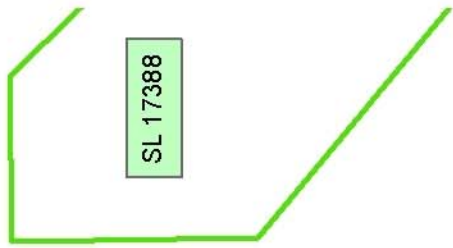
ST BERNARD PARISH

CHANDELEUR SOUND AREA ADDITION, REVISED



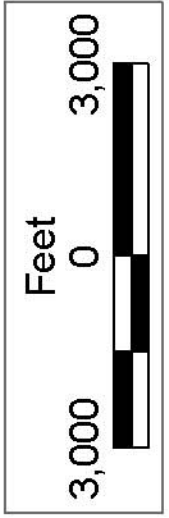
SL 17387

BLOCK CX0027



SL 17388

BLOCK CX0028



P.O.B.
X=2,686,975.00
Y=499,330.00

TRACT 37669 - Portion of Block 23, Chandeleur Sound Addition Area, Revised, St. Bernard Parish, Louisiana

All of the lands now or formerly constituting the beds and bottoms of all water bodies of every nature and description the title of which vests in the State of Louisiana, together with all islands arising therein and other lands formed by accretion or by reliction, where allowed by law, excepting tax adjudicated lands, and not presently under mineral lease on August 10, 2005, situated in St. Bernard Parish, Louisiana, and more particularly described as follows: Beginning at a point on the East line of Block 23, Chandeleur Sound Area Addition, Revised having Coordinates of X = 2,635,350.00 and Y = 506,705.00; thence West 14,750.00 feet to a point on the West line of said Block 23 having Coordinates of X = 2,620,600.00 and Y = 506,705.00; thence North 7,375.00 feet along the West line of said Block 23 to its Northwest corner having Coordinates of X = 2,620,600.00 and Y = 514,080.00; thence East 3,794.00 feet along the North line of said Block 23 to a point at its intersection with the West line of State Lease No. 18248 having Coordinates of X = 2,624,394.00 and Y = 514,080.00; thence along the boundary of said State Lease No. 18248 the following courses and distances: South 6,568.00 feet, East 5,880.00 feet and North 978.35 feet to a point on the East line of said State Lease No. 18248, also being the Southwest corner of State Lease No. 18298 having Coordinates of X = 2,630,274.00 and Y = 508,490.35; thence along the boundary of said State Lease No. 18298 the following courses and distances: North 89 degrees 59 minutes 32 seconds East 4,285.31 feet, North 00 degrees 01 minutes 19 seconds West 4,722.56 feet and West 4,283.50 feet to the Northwest corner of said State Lease No. 18298, also being a point on the East line of said State Lease No. 18248 having Coordinates of X = 2,630,274.00 and Y = 513,213.50; thence North 866.50 feet along the East line of said State Lease No. 18248 to a point at its intersection with the North line of said Block 23 having Coordinates of X = 2,630,274.00 and Y = 514,080.00; thence East 5,076.00 feet along the North line of said Block 23 to its Northeast corner having Coordinates of X = 2,635,350.00 and Y = 514,080.00; thence South 7,375.00 feet along the East line of said Block 23 to the point of beginning, containing approximately **1,035 acres**, all as more particularly outlined on a plat on file in the Office of Mineral Resources, Department of Natural Resources. All bearings, distances and coordinates are based on Louisiana Coordinate System of 1927, (North or South Zone), where applicable.

NOTE: The above description of the Tract nominated for lease has been provided and corrected, where required, exclusively by the nomination party. Any mineral lease selected from this Tract and awarded by the Louisiana State Mineral Board shall be without warranty of any kind, either express, implied, or statutory, including, but not limited to, the implied warranties of merchantability and fitness for a particular purpose. Should the mineral lease awarded by the Louisiana State Mineral Board be subsequently modified, cancelled or abrogated due to the existence of conflicting leases, operating agreements, private claims or other future obligations or conditions which may affect all or any portion

of the leased Tract, it shall not relieve the Lessee of the obligation to pay any bonus due thereon to the Louisiana State Mineral Board, nor shall the Louisiana State Mineral Board be obligated to refund any consideration paid by the Lessor prior to such modification, cancellation, or abrogation, including, but not limited to, bonuses, rentals and royalties.

NOTE: The Office of Mineral Resources will require a minimum bonus of \$230 per acre and a minimum royalty of 23%.

NOTE: The State of Louisiana does hereby reserve, and this lease shall be subject to, the imprescriptible right of surface use in the nature of a servitude in favor of the Department of Natural Resources, including its Offices and Commissions, for the sole purpose of implementing, constructing, servicing and maintaining approved coastal zone management and/or restoration projects. Utilization of any and all rights derived under this lease by the mineral lessee, its agents, successors or assigns, shall not interfere with nor hinder the reasonable surface use by the Department of Natural Resources, its Offices or Commissions, as herein above reserved.

NOTE: The Department of Wildlife and Fisheries has designated certain areas in the coastal waters of the State of Louisiana as Oyster Seed Bed Areas. The exact location of those Seed Bed Areas must be obtained from the Department of Wildlife and Fisheries and any work done under a mineral lease from the State of Louisiana may necessarily be conducted in conformity with the rules and regulations promulgated by the said Department of Wildlife and Fisheries for Oyster Seed Bed Areas.

Applicant: KARE-SUE ENERGY, INC.

Bidder	Cash Payment	Price/Acre	Rental	Oil	Gas	Other



P.O.B.
X=2,635,350.00
Y=506,705.00

SL 18302



T11S - R19E

SL 18298

T12S - R19E

CHANDELEUR SOUND AREA ADDITION, REVISED

BLOCK CX0023

SL 18246

SL 18248

ST BERNARD PARISH

SL 18249

SL 18493

SL 18253

TRACT 37670 - Portion of Block 24, Chandeleur Sound Addition Area, Revised, St. Bernard Parish, Louisiana

All of the lands now or formerly constituting the beds and bottoms of all water bodies of every nature and description the title of which vests in the State of Louisiana, together with all islands arising therein and other lands formed by accretion or by reliction, where allowed by law, excepting tax adjudicated lands, and not presently under mineral lease on August 10, 2005, situated in St. Bernard Parish, Louisiana, and more particularly described as follows: Beginning at a point on the West line of Block 24, Chandeleur Sound Area Addition, Revised having Coordinates of X = 2,635,350.00 and Y = 506,705.00; thence North 7,375.00 feet along the West line of said Block 24 to its Northwest corner having Coordinates of X = 2,635,350.00 and Y = 514,080.00; thence East 14,750.00 feet along the North line of said Block 24 to its Northeast corner having Coordinates of X = 2,650,100.00 and Y = 514,080.00; thence South 6,481.72 feet along the East line of said Block 24 to a point, also being the Northeast corner of State Lease No. 18299 having Coordinates of X = 2,650,100.00 and Y = 507,598.28; thence along the boundary of said State Lease No. 18299 the following courses and distances: South 89 degrees 53 minutes 50 seconds West 3,219.51 feet and South 887.50 feet to the Southwest corner of said State Lease No. 18299 having Coordinates of X = 2,646,880.50 and Y = 506,705.00; thence West 11,530.50 feet to the point of beginning, containing approximately **1,756 acres**, all as more particularly outlined on a plat on file in the Office of Mineral Resources, Department of Natural Resources. All bearings, distances and coordinates are based on Louisiana Coordinate System of 1927, (North or South Zone), where applicable.

NOTE: The above description of the Tract nominated for lease has been provided and corrected, where required, exclusively by the nomination party. Any mineral lease selected from this Tract and awarded by the Louisiana State Mineral Board shall be without warranty of any kind, either express, implied, or statutory, including, but not limited to, the implied warranties of merchantability and fitness for a particular purpose. Should the mineral lease awarded by the Louisiana State Mineral Board be subsequently modified, cancelled or abrogated due to the existence of conflicting leases, operating agreements, private claims or other future obligations or conditions which may affect all or any portion of the leased Tract, it shall not relieve the Lessee of the obligation to pay any bonus due thereon to the Louisiana State Mineral Board, nor shall the Louisiana State Mineral Board be obligated to refund any consideration paid by the Lessor prior to such modification, cancellation, or abrogation, including, but not limited to, bonuses, rentals and royalties.

NOTE: The Office of Mineral Resources will require a minimum bonus of \$230 per acre and a minimum royalty of 23%.

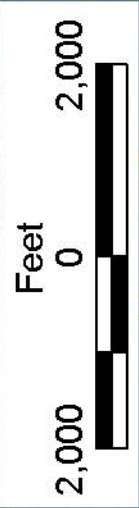
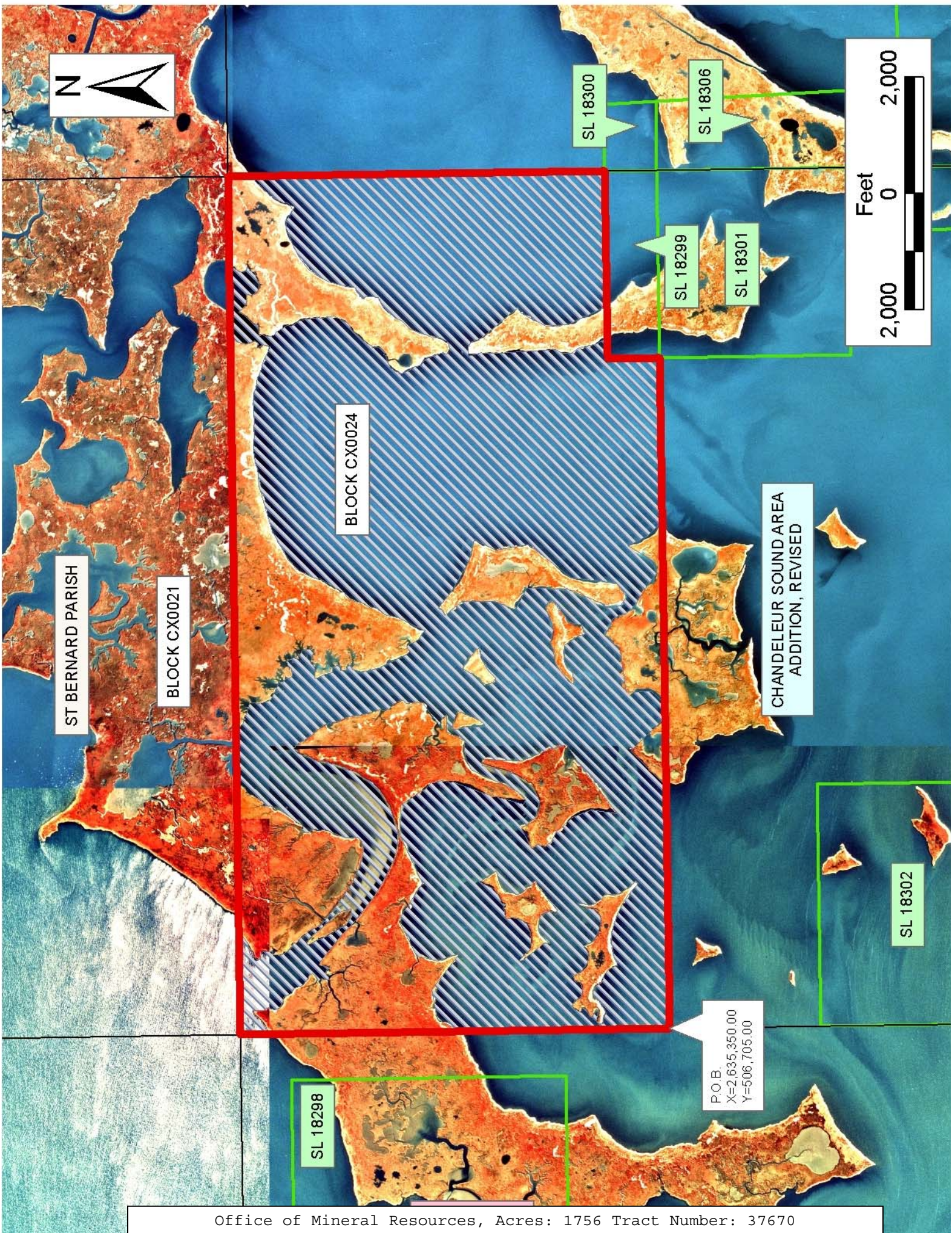
NOTE: The State of Louisiana does hereby reserve, and this lease shall be subject to, the imprescriptible right of surface use in the nature of a servitude in favor of the Department of Natural Resources, including its

Offices and Commissions, for the sole purpose of implementing, constructing, servicing and maintaining approved coastal zone management and/or restoration projects. Utilization of any and all rights derived under this lease by the mineral lessee, its agents, successors or assigns, shall not interfere with nor hinder the reasonable surface use by the Department of Natural Resources, its Offices or Commissions, as herein above reserved.

NOTE: The Department of Wildlife and Fisheries has designated certain areas in the coastal waters of the State of Louisiana as Oyster Seed Bed Areas. The exact location of those Seed Bed Areas must be obtained from the Department of Wildlife and Fisheries and any work done under a mineral lease from the State of Louisiana may necessarily be conducted in conformity with the rules and regulations promulgated by the said Department of Wildlife and Fisheries for Oyster Seed Bed Areas.

Applicant: KARE-SUE ENERGY, INC.

Bidder	Cash Payment	Price/Acre	Rental	Oil	Gas	Other



ST BERNARD PARISH

BLOCK CX0021

BLOCK CX0024

SL 18300

SL 18306

SL 18299

SL 18301

CHANDELEUR SOUND AREA
ADDITION, REVISED

SL 18302

SL 18298

P.O.B.
X=2,635,350.00
Y=506,705.00

TRACT 37671 - Portion of Block 25, Chandeleur Sound Addition Area, Revised, St. Bernard Parish, Louisiana

All of the lands now or formerly constituting the beds and bottoms of all water bodies of every nature and description the title of which vests in the State of Louisiana, together with all islands arising therein and other lands formed by accretion or by reliction, where allowed by law, excepting tax adjudicated lands, and not presently under mineral lease on August 10, 2005, situated in St. Bernard Parish, Louisiana, and more particularly described as follows: Beginning at a point on the East line of Block 25, Chandeleur Sound Area Addition, Revised having Coordinates of X = 2,664,850.00 and Y = 506,705.00; thence West 13,566.53 feet to the Southeast corner of State Lease No. 18300 having Coordinates of X = 2,651,283.47 and Y = 506,705.00; thence along the boundary of said State Lease No. 18300 the following courses and distances: North 02 degrees 24 minutes 22 seconds West 896.12 feet and South 89 degrees 53 minutes 50 seconds West 1,145.86 feet to the Northwest corner of said State Lease No. 18300, also being a point on the West line of said Block 25 having Coordinates of X = 2,650,100.00 and Y = 507,598.28; thence North 6,481.72 feet along the West line of said Block 25 to its Northwest corner having Coordinates of X = 2,650,100.00 and Y = 514,080.00; thence East 14,750.00 feet along the North line of said Block 25 to its Northeast corner having Coordinates of X = 2,664,850.00 and Y = 514,080.00; thence South 7,375.00 feet along the East line of said Block 25 to the point of beginning, containing approximately **2,010 acres**, all as more particularly outlined on a plat on file in the Office of Mineral Resources, Department of Natural Resources. All bearings, distances and coordinates are based on Louisiana Coordinate System of 1927, (North or South Zone), where applicable.

NOTE: The above description of the Tract nominated for lease has been provided and corrected, where required, exclusively by the nomination party. Any mineral lease selected from this Tract and awarded by the Louisiana State Mineral Board shall be without warranty of any kind, either express, implied, or statutory, including, but not limited to, the implied warranties of merchantability and fitness for a particular purpose. Should the mineral lease awarded by the Louisiana State Mineral Board be subsequently modified, cancelled or abrogated due to the existence of conflicting leases, operating agreements, private claims or other future obligations or conditions which may affect all or any portion of the leased Tract, it shall not relieve the Lessee of the obligation to pay any bonus due thereon to the Louisiana State Mineral Board, nor shall the Louisiana State Mineral Board be obligated to refund any consideration paid by the Lessor prior to such modification, cancellation, or abrogation, including, but not limited to, bonuses, rentals and royalties.

NOTE: The Office of Mineral Resources will require a minimum bonus of \$230 per acre and a minimum royalty of 23%.

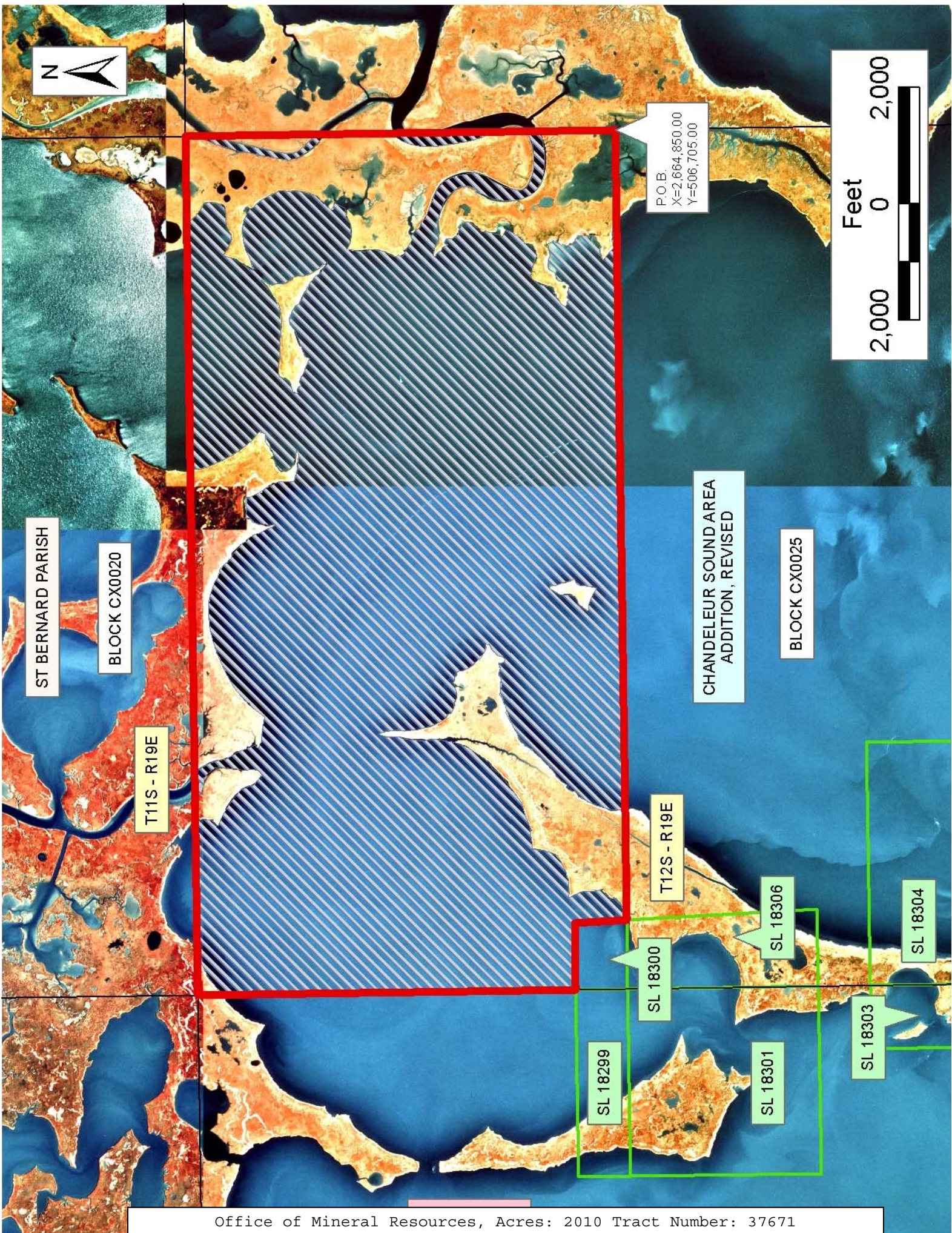
NOTE: The State of Louisiana does hereby reserve, and this lease shall be subject to, the imprescriptible right of surface use in the nature of a

servitude in favor of the Department of Natural Resources, including its Offices and Commissions, for the sole purpose of implementing, constructing, servicing and maintaining approved coastal zone management and/or restoration projects. Utilization of any and all rights derived under this lease by the mineral lessee, its agents, successors or assigns, shall not interfere with nor hinder the reasonable surface use by the Department of Natural Resources, its Offices or Commissions, as herein above reserved.

NOTE: The Department of Wildlife and Fisheries has designated certain areas in the coastal waters of the State of Louisiana as Oyster Seed Bed Areas. The exact location of those Seed Bed Areas must be obtained from the Department of Wildlife and Fisheries and any work done under a mineral lease from the State of Louisiana may necessarily be conducted in conformity with the rules and regulations promulgated by the said Department of Wildlife and Fisheries for Oyster Seed Bed Areas.

Applicant: KARE-SUE ENERGY, INC.

Bidder	Cash Payment	Price/Acre	Rental	Oil	Gas	Other



ST BERNARD PARISH

BLOCK CX0020

T11S - R19E

CHANDELEUR SOUND AREA
ADDITION, REVISED

BLOCK CX0025

T12S - R19E

SL 18299

SL 18300

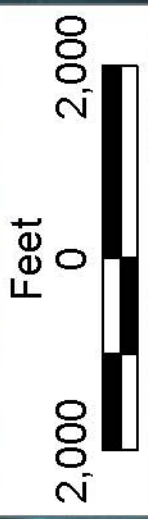
SL 18301

SL 18306

SL 18303

SL 18304

P.O.B.
X=2,664,850.00
Y=506,705.00



TRACT 37672 - Portion of Block 26, Chandeleur Sound Addition Area, Revised, St. Bernard Parish, Louisiana

All of the lands now or formerly constituting the beds and bottoms of all water bodies of every nature and description the title of which vests in the State of Louisiana, together with all islands arising therein and other lands formed by accretion or by reliction, where allowed by law, excepting tax adjudicated lands, and not presently under mineral lease on August 10, 2005, situated in St. Bernard Parish, Louisiana, and more particularly described as follows: Beginning at a point on the North line of Block 26, Chandeleur Sound Area Addition, Revised having Coordinates of X = 2,672,225.00 and Y = 514,080.00; thence South 14,750.00 feet to a point on the South line of said Block 26 having Coordinates of X = 2,672,225.00 and Y = 499,330.00; thence West 7,375.00 feet along the South line of said Block 26 to its Southwest corner having Coordinates of X = 2,664,850.00 and Y = 499,330.00; thence North 14,750.00 feet along the West line of said Block 26 to its Northwest corner having Coordinates of X = 2,664,850.00 and Y = 514,080.00; thence East 7,375.00 feet along the North line of said Block 26 to the point of beginning, containing approximately **1,555 acres**, all as more particularly outlined on a plat on file in the Office of Mineral Resources, Department of Natural Resources. All bearings, distances and coordinates are based on Louisiana Coordinate System of 1927, (North or South Zone), where applicable.

NOTE: The above description of the Tract nominated for lease has been provided and corrected, where required, exclusively by the nomination party. Any mineral lease selected from this Tract and awarded by the Louisiana State Mineral Board shall be without warranty of any kind, either express, implied, or statutory, including, but not limited to, the implied warranties of merchantability and fitness for a particular purpose. Should the mineral lease awarded by the Louisiana State Mineral Board be subsequently modified, cancelled or abrogated due to the existence of conflicting leases, operating agreements, private claims or other future obligations or conditions which may affect all or any portion of the leased Tract, it shall not relieve the Lessee of the obligation to pay any bonus due thereon to the Louisiana State Mineral Board, nor shall the Louisiana State Mineral Board be obligated to refund any consideration paid by the Lessor prior to such modification, cancellation, or abrogation, including, but not limited to, bonuses, rentals and royalties.

NOTE: The Office of Mineral Resources will require a minimum bonus of \$230 per acre and a minimum royalty of 23%.

NOTE: The State of Louisiana does hereby reserve, and this lease shall be subject to, the imprescriptible right of surface use in the nature of a servitude in favor of the Department of Natural Resources, including its Offices and Commissions, for the sole purpose of implementing, constructing, servicing and maintaining approved coastal zone management and/or restoration projects. Utilization of any and all rights derived under this lease by the mineral lessee, its agents, successors or assigns,

shall not interfere with nor hinder the reasonable surface use by the Department of Natural Resources, its Offices or Commissions, as herein above reserved.

NOTE: The Department of Wildlife and Fisheries has designated certain areas in the coastal waters of the State of Louisiana as Oyster Seed Bed Areas. The exact location of those Seed Bed Areas must be obtained from the Department of Wildlife and Fisheries and any work done under a mineral lease from the State of Louisiana may necessarily be conducted in conformity with the rules and regulations promulgated by the said Department of Wildlife and Fisheries for Oyster Seed Bed Areas.

Applicant: KARE-SUE ENERGY, INC.

Bidder	Cash Payment	Price/Acre	Rental	Oil	Gas	Other



SL 17387

T12S - R20E

CHANDELEUR SOUND AREA
ADDITION, REVISED

BLOCK CX0026

BLOCK CX0043



P.O.B.
X=2,672,225.00
Y=514,080.00



SL 18307

T11S - R20E

ST BERNARD PARISH

SL 18305

SL 18310

SL 18304

SL 18311

TRACT 37673 - Portion of Block 26, Chandeleur Sound Addition Area, Revised, St. Bernard Parish, Louisiana

All of the lands now or formerly constituting the beds and bottoms of all water bodies of every nature and description the title of which vests in the State of Louisiana, together with all islands arising therein and other lands formed by accretion or by reliction, where allowed by law, excepting tax adjudicated lands, and not presently under mineral lease on August 10, 2005, situated in St. Bernard Parish, Louisiana, and more particularly described as follows: Beginning at a point on the North line of Block 26, Chandeleur Sound Area Addition, Revised having Coordinates of X = 2,672,225.00 and Y = 514,080.00; thence East 7,375.00 feet along the North line of said Block 26 to its Northeast corner having Coordinates of X = 2,679,600.00 and Y = 514,080.00; thence South 14,750.00 feet along the East line of said Block 26 to its Southeast corner having Coordinates of X = 2,679,600.00 and Y = 499,330.00; thence West 7,375.00 feet along the South line of said Block 26 to a point having Coordinates of X = 2,672,225.00 and Y = 499,330.00; thence North 14,750.00 feet to the point of beginning, containing approximately **1,755 acres**, all as more particularly outlined on a plat on file in the Office of Mineral Resources, Department of Natural Resources. All bearings, distances and coordinates are based on Louisiana Coordinate System of 1927, (North or South Zone), where applicable.

NOTE: The above description of the Tract nominated for lease has been provided and corrected, where required, exclusively by the nomination party. Any mineral lease selected from this Tract and awarded by the Louisiana State Mineral Board shall be without warranty of any kind, either express, implied, or statutory, including, but not limited to, the implied warranties of merchantability and fitness for a particular purpose. Should the mineral lease awarded by the Louisiana State Mineral Board be subsequently modified, cancelled or abrogated due to the existence of conflicting leases, operating agreements, private claims or other future obligations or conditions which may affect all or any portion of the leased Tract, it shall not relieve the Lessee of the obligation to pay any bonus due thereon to the Louisiana State Mineral Board, nor shall the Louisiana State Mineral Board be obligated to refund any consideration paid by the Lessor prior to such modification, cancellation, or abrogation, including, but not limited to, bonuses, rentals and royalties.

NOTE: The Office of Mineral Resources will require a minimum bonus of \$230 per acre and a minimum royalty of 23%.

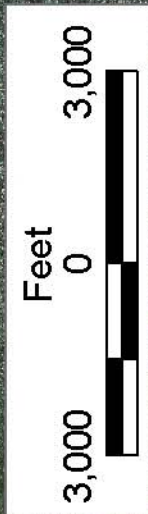
NOTE: The State of Louisiana does hereby reserve, and this lease shall be subject to, the imprescriptible right of surface use in the nature of a servitude in favor of the Department of Natural Resources, including its Offices and Commissions, for the sole purpose of implementing, constructing, servicing and maintaining approved coastal zone management and/or restoration projects. Utilization of any and all rights derived under this lease by the mineral lessee, its agents, successors or assigns,

shall not interfere with nor hinder the reasonable surface use by the Department of Natural Resources, its Offices or Commissions, as herein above reserved.

NOTE: The Department of Wildlife and Fisheries has designated certain areas in the coastal waters of the State of Louisiana as Oyster Seed Bed Areas. The exact location of those Seed Bed Areas must be obtained from the Department of Wildlife and Fisheries and any work done under a mineral lease from the State of Louisiana may necessarily be conducted in conformity with the rules and regulations promulgated by the said Department of Wildlife and Fisheries for Oyster Seed Bed Areas.

Applicant: KARE-SUE ENERGY, INC.

Bidder	Cash Payment	Price/Acre	Rental	Oil	Gas	Other



SL 17387

BLOCK CX0027



T12S - R20E

P.O.B.
X=2,672,225.00
Y=514,080.00

ST BERNARD PARISH

CHANDELEUR SOUND AREA
ADDITION, REVISED

BLOCK CX0026



SL 18307

SL 18305



SL 18310

TRACT 37674 - Portion of Blocks 5, and 6, North Lake Borgne Area, St. Bernard Parish, Louisiana

All of the lands now or formerly constituting the beds and bottoms of all water bodies of every nature and description the title of which vests in the State of Louisiana, together with all islands arising therein and other lands formed by accretion or by reliction, where allowed by law, excepting tax adjudicated lands, and not presently under mineral lease on August 10, 2005, situated in St. Bernard Parish, Louisiana, and more particularly described as follows: Beginning at a point within Block 5, North Lake Borgne Area, having Coordinates of X = 2,568,602.00 and Y = 513,810.00; thence South 8,491.00 feet to a point within Block 6, having Coordinates of X = 2,568,602.00 and Y = 505,319.00; thence West 6,929.00 feet to a point having Coordinates of X = 2,561,673.00 and Y = 505,319.00; thence North 2,247.00 feet to a point having Coordinates of X = 2,561,673.00 and Y = 507,566.00; thence West 6,367.00 feet to a point having Coordinates of X = 2,555,306.00 and Y = 507,566.00; thence North 6,244.00 feet to a point within said Block 5 having Coordinates of X = 2,555,306.00 and Y = 513,810.00; thence East 13,296.00 feet to the point of beginning, containing approximately **2,263.31 acres**, all as more particularly outlined on a plat on file in the Office of Mineral Resources, Department of Natural Resources. All bearings, distances and coordinates are based on Louisiana Coordinate System of 1927, (North or South Zone), where applicable.

NOTE: The above description of the Tract nominated for lease has been provided and corrected, where required, exclusively by the nomination party. Any mineral lease selected from this Tract and awarded by the Louisiana State Mineral Board shall be without warranty of any kind, either express, implied, or statutory, including, but not limited to, the implied warranties of merchantability and fitness for a particular purpose. Should the mineral lease awarded by the Louisiana State Mineral Board be subsequently modified, cancelled or abrogated due to the existence of conflicting leases, operating agreements, private claims or other future obligations or conditions which may affect all or any portion of the leased Tract, it shall not relieve the Lessee of the obligation to pay any bonus due thereon to the Louisiana State Mineral Board, nor shall the Louisiana State Mineral Board be obligated to refund any consideration paid by the Lessor prior to such modification, cancellation, or abrogation, including, but not limited to, bonuses, rentals and royalties.

NOTE: The Office of Mineral Resources will require a minimum bonus of \$230 per acre and a minimum royalty of 23%.

NOTE: The State of Louisiana does hereby reserve, and this lease shall be subject to, the imprescriptible right of surface use in the nature of a servitude in favor of the Department of Natural Resources, including its Offices and Commissions, for the sole purpose of implementing, constructing, servicing and maintaining approved coastal zone management and/or restoration projects. Utilization of any and all rights derived

under this lease by the mineral lessee, its agents, successors or assigns, shall not interfere with nor hinder the reasonable surface use by the Department of Natural Resources, its Offices or Commissions, as herein above reserved.

NOTE: The Department of Wildlife and Fisheries has designated certain areas in the coastal waters of the State of Louisiana as Oyster Seed Bed Areas. The exact location of those Seed Bed Areas must be obtained from the Department of Wildlife and Fisheries and any work done under a mineral lease from the State of Louisiana may necessarily be conducted in conformity with the rules and regulations promulgated by the said Department of Wildlife and Fisheries for Oyster Seed Bed Areas.

Applicant: KARE-SUE ENERGY, INC.

Bidder	Cash Payment	Price/Acre	Rental	Oil	Gas	Other



P.O.B.
X=2,568,602.00
Y=513,810.00

BLOCK LB0005

ST BERNARD PARISH

BLOCK LB0006

NORTH LAKE BORGNE AREA

