

TRACT 37746 - St. Mary Parish, Louisiana

A portion of all lands located above the mean high water mark, together with lands now or formerly constituting the beds and bottoms of any water body of whatever description or nature belonging to the State of Louisiana which is now located within the boundaries of the Atchafalaya Delta Wildlife Management Area and not presently under mineral lease by the State of Louisiana on August 10, 2005, and more particularly located as follows: Beginning at a point on the Atchafalaya Delta Wildlife Management Area boundary, said point also being on the West line of Block 16, Eugene Island Area, Revised, having Coordinates of X = 1,969,955.68 and Y = 250,124.15; thence North 2,269.85 feet along West line of said Block 16 to its Northwest corner, said point also the Southwest corner of Block 15, having Coordinates of X = 1,969,955.68 and Y = 252,394.00;; thence North 3,000.00 feet along the West line of said Block 15 to a corner having Coordinates of X = 1,969,955.68 and Y = 255,394.00; thence North 1,706.00 feet to a point having Coordinates of X = 1,969,955.68 and Y = 257,100.00; thence East 7,511.08 feet to a point having Coordinates of X = 1,977,466.76 and Y = 257,100.00; thence South 4,706.00 feet to a point on the common boundary line between said Block 15 and said Block 16 having Coordinates of X = 1,977,466.76 and Y = 252,394.00; thence South 4,892.85 feet to a point on said Atchafalaya Delta Wildlife Management Area boundary having Coordinates of X = 1,977,466.76 and Y = 247,501.15; thence North 70 degrees 45 minutes 00 seconds West 7,955.91 feet along said Atchafalaya Delta Wildlife Management Area boundary to the point of beginning, containing approximately **1,428.99 acres**, all as more particularly outlined on a plat on file in the Office of Mineral Resources, Department of Natural Resources. All bearings, distances and coordinates are based on Louisiana Coordinate System of 1927, (South Zone).

NOTE: The above description of the Tract nominated for lease has been provided and corrected, where required, exclusively by the nomination party. Any mineral lease selected from this Tract and awarded by the Louisiana State Mineral Board shall be without warranty of any kind, either express, implied, or statutory, including, but not limited to, the implied warranties of merchantability and fitness for a particular purpose. Should the mineral lease awarded by the Louisiana State Mineral Board be subsequently modified, cancelled or abrogated due to the existence of conflicting leases, operating agreements, private claims or other future obligations or conditions which may affect all or any portion of the leased Tract, it shall not relieve the Lessee of the obligation to pay any bonus due thereon to the Louisiana State Mineral Board, nor shall the Louisiana State Mineral Board be obligated to refund any consideration paid by the Lessor prior to such modification, cancellation, or abrogation, including, but not limited to, bonuses, rentals and royalties.

NOTE: The Office of Mineral Resources will require a minimum bonus of \$350 per acre and a minimum royalty of 25%.

NOTE: The above described tract may be in the vicinity of existing shell reefs where drilling and dredging operations must be conducted in strict conformity with the regulations adopted by the Louisiana Department of Wildlife and Fisheries and/or the U.S. Corps of Engineers, U.S. Army.

NOTE: This tract is located in The Atchafalaya Delta WMA under the jurisdiction of the Louisiana Department of Wildlife and Fisheries which has promulgated rules and regulations for the protection of game and wildlife on the aforesaid Tract and, therefore, shall be subject to said rules and regulations, a copy of which shall be attached to the mineral lease. In addition to the specific rules and regulations applicable, the following shall apply regarding operations under this mineral lease:

1. No activities will be allowed without written authorization of the Louisiana Department of Wildlife and Fisheries.
2. Proposed projects will be evaluated on a case by case basis. Modifications to proposed project features including but not limited to access routes, spoil placement, well sites, flowlines and appurtenant structures may be required by the Department of Wildlife and Fisheries.
3. Compliance with the Atchafalaya Delta WMA regulations will be required unless otherwise specified by the Department of Wildlife and Fisheries.
4. Compensatory mitigation will be required to offset unavoidable wetland impacts.
5. Removal of all structures, facilities and equipment will be required within 120 days of abandonment unless otherwise agreed to in writing by the Department of Wildlife and Fisheries.
6. No activities will be allowed during the hunting season unless authorized by the Department.
7. Prior to submitting applications for wetland permits to Federal and State permitting agencies, the leaseholder shall coordinate project details with the Department of Wildlife and Fisheries. Contact person for the Department will be Mike Windham at (504) 568-5886.

NOTE: The State of Louisiana does hereby reserve, and this lease shall be subject to, the imprescriptible right of surface use in the nature of a servitude in favor of the Department of Natural Resources, including its Offices and Commissions, for the sole purpose of implementing, constructing, servicing and maintaining approved coastal zone management and/or restoration projects. Utilization of any and all rights derived under this lease by the mineral lessee, its agents, successors or assigns, shall not interfere with nor hinder the reasonable surface use by the

Department of Natural Resources, its Offices or Commissions, as herein above reserved.

NOTE: It appears, according to our records, that a portion of this Tract is located within the restrictive safety fairway area as set out by the Corps of Engineers, U.S. Army and/or the restrictive anchorage area as set out by the U.S. Coast Guard.

NOTE: The Department of Wildlife and Fisheries has designated certain areas in the coastal waters of the State of Louisiana as Oyster Seed Bed Areas. The exact location of those Seed Bed Areas must be obtained from the Department of Wildlife and Fisheries and any work done under a mineral lease from the State of Louisiana may necessarily be conducted in conformity with the rules and regulations promulgated by the said Department of Wildlife and Fisheries for Oyster Seed Bed Areas.

Applicant: ACADIAN LAND SERVICES, L.L.C.

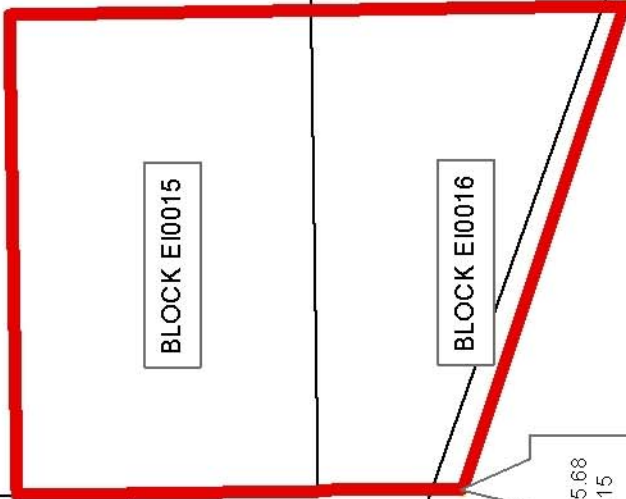
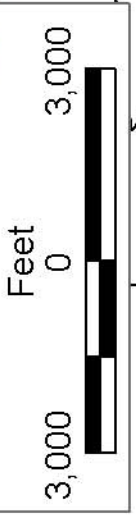
Bidder	Cash Payment	Price/Acre	Rental	Oil	Gas	Other



ST MARY PARISH

ATCHAFALAYA DELTA
WMIA

EUGENE ISLAND AREA, REVISED



BLOCK EI0014

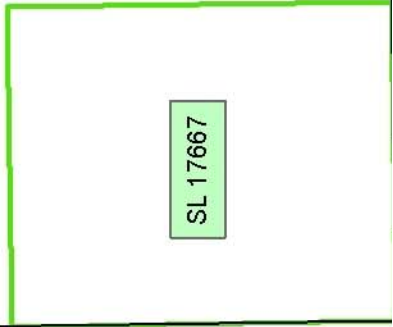
SL 7869

SL 7870

BLOCK EI0017

SL 16988

P.O.B.
X=1,969,955.68
Y=250,124.15



SL 17667

SL 18501

BLOCK EI0036

TRACT 37747 - St. Mary Parish, Louisiana

A portion of all lands located above the mean high water mark, together with lands now or formerly constituting the beds and bottoms of any water body of whatever description or nature belonging to the State of Louisiana which is now located within the boundaries of the Atchafalaya Delta Wildlife Management Area and not presently under mineral lease by the State of Louisiana on August 10, 2005, and more particularly located as follows: Beginning at the Northeast corner of Block 17, Eugene Island Area, Revised, having Coordinates of X = 1,969,955.68 and Y = 255,394.00; thence South 5,269.85 feet along the East line of said Block 17 to a point on the Atchafalaya Delta Wildlife Management Area boundary having Coordinates of X = 1,969,955.68 and Y = 250,124.15; thence North 70 degrees 45 minutes 00 seconds West 5,955.78 feet along the Southern boundary of said Atchafalaya Delta Wildlife Management Area to a point on the East line of State Lease No. 7870, as amended, having Coordinates of X = 1,964,332.90 and Y = 252,087.73; thence along the Eastern boundary of said State Lease No. 7870, as amended, the following courses: North 36 degrees 01 minutes 39 seconds East 250.11 feet to a point having Coordinates of X = 1,964,480.00 and Y = 252,290.00; North 38 degrees 14 minutes 02 seconds East 840.24 feet to a point having Coordinates of X = 1,965,000.00 and Y = 252,950.00; North 40 degrees 20 minutes 40 seconds East 2,178.00 feet to a point having Coordinates of X = 1,966,410.00 and Y = 254,610.00; North 39 degrees 22 minutes 10 seconds East 504.48 feet to a point having Coordinates of X = 1,966,730.00 and Y = 255,000.00; and North 34 degrees 25 minutes 18 seconds East 477.63 feet to its Northeast corner, said corner also being a point on the North line of said Block 17, having Coordinates of X = 1,967,000.00 and Y = 255,394.00; thence East 2,955.68 feet along the North line of said Block 17 to the point of beginning, containing approximately **451.78 acres**, all as more particularly outlined on a plat on file in the Office of Mineral Resources, Department of Natural Resources. All bearings, distances and coordinates are based on Louisiana Coordinate System of 1927, (South Zone).

NOTE: The above description of the Tract nominated for lease has been provided and corrected, where required, exclusively by the nomination party. Any mineral lease selected from this Tract and awarded by the Louisiana State Mineral Board shall be without warranty of any kind, either express, implied, or statutory, including, but not limited to, the implied warranties of merchantability and fitness for a particular purpose. Should the mineral lease awarded by the Louisiana State Mineral Board be subsequently modified, cancelled or abrogated due to the existence of conflicting leases, operating agreements, private claims or other future obligations or conditions which may affect all or any portion of the leased Tract, it shall not relieve the Lessee of the obligation to pay any bonus due thereon to the Louisiana State Mineral Board, nor shall the Louisiana State Mineral Board be obligated to refund any consideration paid by the Lessor prior to such modification, cancellation, or abrogation, including, but not limited to, bonuses, rentals and royalties.

NOTE: The Office of Mineral Resources will require a minimum bonus of \$350 per acre and a minimum royalty of 25%.

NOTE: The above described tract may be in the vicinity of existing shell reefs where drilling and dredging operations must be conducted in strict conformity with the regulations adopted by the Louisiana Department of Wildlife and Fisheries and/or the U.S. Corps of Engineers, U.S. Army.

NOTE: This tract is located in The Atchafalaya Delta WMA under the jurisdiction of the Louisiana Department of Wildlife and Fisheries which has promulgated rules and regulations for the protection of game and wildlife on the aforesaid Tract and, therefore, shall be subject to said rules and regulations, a copy of which shall be attached to the mineral lease. In addition to the specific rules and regulations applicable, the following shall apply regarding operations under this mineral lease:

8. No activities will be allowed without written authorization of the Louisiana Department of Wildlife and Fisheries.
9. Proposed projects will be evaluated on a case by case basis. Modifications to proposed project features including but not limited to access routes, spoil placement, well sites, flowlines and appurtenant structures may be required by the Department of Wildlife and Fisheries.
10. Compliance with the Atchafalaya Delta WMA regulations will be required unless otherwise specified by the Department of Wildlife and Fisheries.
11. Compensatory mitigation will be required to offset unavoidable wetland impacts.
12. Removal of all structures, facilities and equipment will be required within 120 days of abandonment unless otherwise agreed to in writing by the Department of Wildlife and Fisheries.
13. No activities will be allowed during the hunting season unless authorized by the Department.
14. Prior to submitting applications for wetland permits to Federal and State permitting agencies, the leaseholder shall coordinate project details with the Department of Wildlife and Fisheries. Contact person for the Department will be Mike Windham at (504) 568-5886.

NOTE: The State of Louisiana does hereby reserve, and this lease shall be subject to, the imprescriptible right of surface use in the nature of a servitude in favor of the Department of Natural Resources, including its Offices and Commissions, for the sole purpose of implementing,

constructing, servicing and maintaining approved coastal zone management and/or restoration projects. Utilization of any and all rights derived under this lease by the mineral lessee, its agents, successors or assigns, shall not interfere with nor hinder the reasonable surface use by the Department of Natural Resources, its Offices or Commissions, as herein above reserved.

NOTE: The Department of Wildlife and Fisheries has designated certain areas in the coastal waters of the State of Louisiana as Oyster Seed Bed Areas. The exact location of those Seed Bed Areas must be obtained from the Department of Wildlife and Fisheries and any work done under a mineral lease from the State of Louisiana may necessarily be conducted in conformity with the rules and regulations promulgated by the said Department of Wildlife and Fisheries for Oyster Seed Bed Areas.

Applicant: ACADIAN LAND SERVICES, L.L.C.

Bidder	Cash Payment	Price/Acre	Rental	Oil	Gas	Other

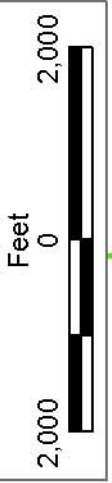


BLOCK EI0015

ATCHAFALAYA DELTA
WMA

BLOCK EI0016

P.O.B.
X=1,969,955.68
Y=255,394.00



SL 17667

ST MARY PARISH

BLOCK EI0017

EUGENE ISLAND AREA, REVISED

SL 7869

BLOCK EI0014

SL 7868

SL 7870

SL 16988

SL 18501