

TRACT 37646 - Portion of Block 17, Eugene Island Area, Revised, St. Mary Parish, Louisiana

The beds and bottoms of all water bodies belonging to the State of Louisiana located in Block 17, Eugene Island Area, Revised, together with any present lands formed by accretion to the shoreline or islands formed therein, located in St. Mary Parish, Louisiana, owned by and not presently under mineral lease as of August 10, 2005, from the State of Louisiana, the geographical area of which is more fully described as follows: Beginning at the Southwest corner of State Lease No. 14492, as amended, said point also being located on the West line of Block 17, Eugene Island Area, Revised, having Coordinates of X = 1,954,933.52 and Y = 244,144.71; thence along the boundary of said State Lease No. 14492, as amended, the following courses: East 600.00 to a point having Coordinates of X = 1,955,533.52 and Y = 244,144.71 and North 43 degrees 34 minutes 47 seconds East 700.00 feet to its most Easterly Southeast corner, said corner also being a Southwest corner of State Lease No. 18501, having Coordinates of X = 1,956,016.07 and Y = 244,651.80; thence along the boundary of said State Lease No. 18501 the following courses: East 800.00 feet to a point having Coordinates of X = 1,956,816.07 and Y = 244,651.80 and South 41 degrees 26 minutes 57 seconds East 5,011.57 feet to its most Southerly Southwest corner, said corner also being a point on the South line of said Block 17, having Coordinates of X = 1,960,133.52 and Y = 240,895.42; thence West 5,200.00 feet along the South line of said Block 17 to a its Southwest corner having Coordinates of X = 1,954,933.52 and Y = 240,895.42; thence North 3,249.29 feet along the West line of said Block 17 to the point of beginning, containing approximately **295.59 acres**, all as more particularly outlined on a plat on file in the Office of Mineral Resources, Department of Natural Resources. All bearings, distances and coordinates are based on Louisiana Coordinate System of 1927, (North or South Zone).

NOTE: The above description of the Tract nominated for lease has been provided and corrected, where required, exclusively by the nomination party. Any mineral lease selected from this Tract and awarded by the Louisiana State Mineral Board shall be without warranty of any kind, either express, implied, or statutory, including, but not limited to, the implied warranties of merchantability and fitness for a particular purpose. Should the mineral lease awarded by the Louisiana State Mineral Board be subsequently modified, cancelled or abrogated due to the existence of conflicting leases, operating agreements, private claims or other future obligations or conditions which may affect all or any portion of the leased Tract, it shall not relieve the Lessee of the obligation to pay any bonus due thereon to the Louisiana State Mineral Board, nor shall the Louisiana State Mineral Board be obligated to refund any consideration paid by the Lessor prior to such modification, cancellation, or abrogation, including, but not limited to, bonuses, rentals and royalties.

NOTE: The above described tract may be in the vicinity of existing shell reefs where drilling and dredging operations must be conducted in strict

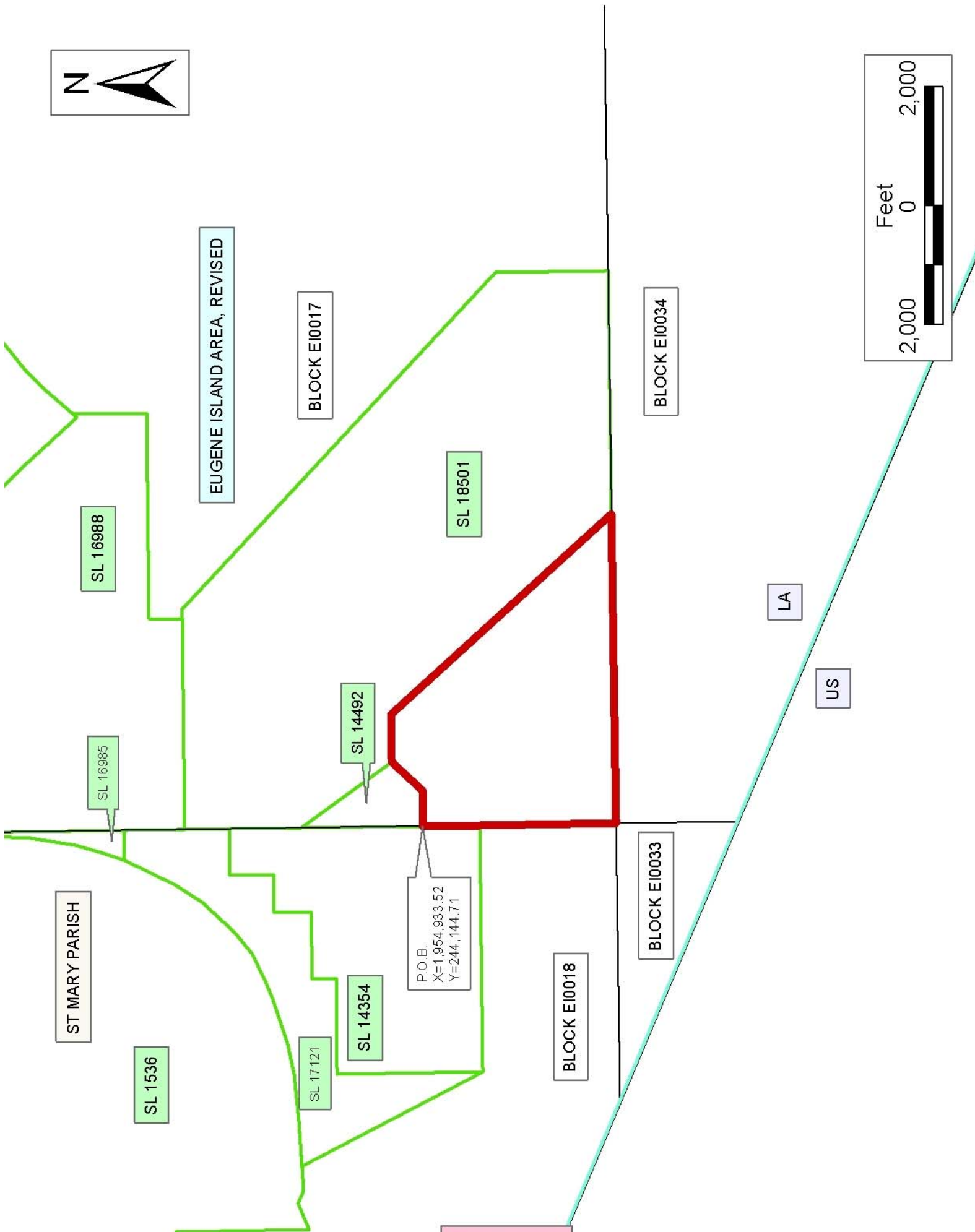
conformity with the regulations adopted by the Louisiana Department of Wildlife and Fisheries and/or the U.S. Corps of Engineers, U.S. Army.

NOTE: The State of Louisiana does hereby reserve, and this lease shall be subject to, the imprescriptible right of surface use in the nature of a servitude in favor of the Department of Natural Resources, including its Offices and Commissions, for the sole purpose of implementing, constructing, servicing and maintaining approved coastal zone management and/or restoration projects. Utilization of any and all rights derived under this lease by the mineral lessee, its agents, successors or assigns, shall not interfere with nor hinder the reasonable surface use by the Department of Natural Resources, its Offices or Commissions, as herein above reserved.

NOTE: The Department of Wildlife and Fisheries has designated certain areas in the coastal waters of the State of Louisiana as Oyster Seed Bed Areas. The exact location of those Seed Bed Areas must be obtained from the Department of Wildlife and Fisheries and any work done under a mineral lease from the State of Louisiana may necessarily be conducted in conformity with the rules and regulations promulgated by the said Department of Wildlife and Fisheries for Oyster Seed Bed Areas.

Applicant: ACADIAN LAND SERVICES, L.L.C.

Bidder	Cash Payment	Price/Acre	Rental	Oil	Gas	Other



TRACT 37647 - Portion of Block 34, Eugene Island Area, Revised, St. Mary Parish, Louisiana

The beds and bottoms of all water bodies belonging to the State of Louisiana located in Block 34, Eugene Island Area, Revised, together with any present lands formed by accretion to the shoreline or islands formed therein, located in St. Mary Parish, Louisiana, owned by and not presently under mineral lease as of August 10, 2005, from the State of Louisiana, the geographical area of which is more fully described as follows: Beginning at a the Northeast corner of Block 34, Eugene Island Area, Revised, having Coordinates of X = 1,969,955.68 and Y = 240,895.42; thence South 8,616.22 feet along the East line of said Block 34 to a point on the Three Mile Decree derived from the June 16, 1975 Decree in the United States vs. Louisiana No. 9 Original, having Coordinates of X = 1,969,955.68 and Y = 232,279.20; thence Northwesterly along a straight line to a point on the West line of said Block 34 having Coordinates of X = 1,954,933.52 and Y = 238,855.73; thence North 2,039.69 feet along the West line of said Block 34 to its Northwest corner having Coordinates of X = 1,954,933.52 and Y = 240,895.42; thence East 15,022.16 feet along the North line of said Block 34 to the point of beginning, containing approximately **1,837.41 acres, LESS AND EXCEPT** that portion thereof, if any, lying seaward of the line three nautical miles from the coast line of Louisiana, as said three mile line has been decreed by the Supreme Court of the United States, as determined by a Special Master appointed therein, in litigation styled **United States v. State of Louisiana et al No. 9 Original**, in 1975, all as more particularly outlined on a plat in the Office of Mineral Resources, Department of Natural Resources. All bearings, distances and coordinates are based on the Louisiana Coordinate System of 1927, (South Zone).

NOTE: The above description of the Tract nominated for lease has been provided and corrected, where required, exclusively by the nomination party. Any mineral lease selected from this Tract and awarded by the Louisiana State Mineral Board shall be without warranty of any kind, either express, implied, or statutory, including, but not limited to, the implied warranties of merchantability and fitness for a particular purpose. Should the mineral lease awarded by the Louisiana State Mineral Board be subsequently modified, cancelled or abrogated due to the existence of conflicting leases, operating agreements, private claims or other future obligations or conditions which may affect all or any portion of the leased Tract, it shall not relieve the Lessee of the obligation to pay any bonus due thereon to the Louisiana State Mineral Board, nor shall the Louisiana State Mineral Board be obligated to refund any consideration paid by the Lessor prior to such modification, cancellation, or abrogation, including, but not limited to, bonuses, rentals and royalties.

NOTE: The above described tract may be in the vicinity of existing shell reefs where drilling and dredging operations must be conducted in strict conformity with the regulations adopted by the Louisiana Department of Wildlife and Fisheries and/or the U.S. Corps of Engineers, U.S. Army.

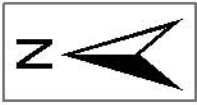
NOTE: The State of Louisiana does hereby reserve, and this lease shall be subject to, the imprescriptible right of surface use in the nature of a servitude in favor of the Department of Natural Resources, including its Offices and Commissions, for the sole purpose of implementing, constructing, servicing and maintaining approved coastal zone management and/or restoration projects. Utilization of any and all rights derived under this lease by the mineral lessee, its agents, successors or assigns, shall not interfere with nor hinder the reasonable surface use by the Department of Natural Resources, its Offices or Commissions, as herein above reserved.

NOTE: It appears, according to our records, that a portion of this Tract is located within the restrictive safety fairway area as set out by the Corps of Engineers, U.S. Army and/or the restrictive anchorage area as set out by the U.S. Coast Guard.

NOTE: The Department of Wildlife and Fisheries has designated certain areas in the coastal waters of the State of Louisiana as Oyster Seed Bed Areas. The exact location of those Seed Bed Areas must be obtained from the Department of Wildlife and Fisheries and any work done under a mineral lease from the State of Louisiana may necessarily be conducted in conformity with the rules and regulations promulgated by the said Department of Wildlife and Fisheries for Oyster Seed Bed Areas.

Applicant: ACADIAN LAND SERVICES, L.L.C.

Bidder	Cash Payment	Price/Acre	Rental	Oil	Gas	Other

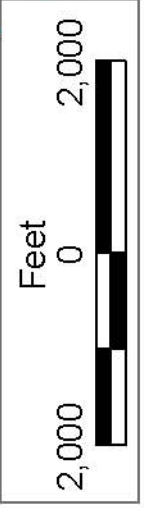


SL 17667

BLOCK EI0016

P.O.B.
X=1,969,955.68
Y=240,895.42

BLOCK EI0035



BLOCK EI0017

LA

US

ST MARY PARISH

SL 18501

EUGENE ISLAND AREA, REVISED

BLOCK EI0034

SL 14492

SL 14354

BLOCK EI0018

BLOCK EI0033

TRACT 37648 - Portion of Block 35, Eugene Island Area, Revised, St. Mary Parish, Louisiana

The beds and bottoms of all water bodies belonging to the State of Louisiana located in Block 35, Eugene Island Area, Revised, together with any present lands formed by accretion to the shoreline or islands formed therein, located in St. Mary Parish, Louisiana, owned by and not presently under mineral lease as of August 10, 2005, from the State of Louisiana, the geographical area of which is more fully described as follows: Beginning at the Northwest corner of Block 35, Eugene Island Area Revised, having Coordinates of X = 1,969,955.68 and Y = 240,895.42; thence East 7,511.08 feet along the North line of said Block 35 to a point having Coordinates of X = 1,977,466.76 and Y = 240,895.42; thence South 14,498.58 feet to a point on the South line of said Block 35 having Coordinates of X = 1,977,466.76 and Y = 226,396.84; thence West 721.69 feet along the South line of said Block 35 to a point on the Three Mile Decree derived from the June 16, 1975 United States vs. Louisiana No. 9 Original having Coordinates of X = 1,976,745.07 and Y = 226,396.84; thence along said Three Mile Decree line the following courses: along an arc with a center of X = 1,987,818.00 and Y = 240,892.00 and a radius of 18,240.60 feet to a point having Coordinates of X = 1,975,782 and Y = 227,186; along an arc with a center of X = 1,987,371.00 and Y = 241,272.00 and a radius of 18,240.60 feet to a point having Coordinates of X = 1,972,054 and Y = 231,367; and to a point on the West line of said Block 35 having Coordinates of X = 1,969,955.68 and Y = 232,279.20; thence North 8,616.22 feet along the West line of said Block 35 to the point of beginning, containing approximately **2,002.21 acres, LESS AND EXCEPT** that portion thereof, if any, lying seaward of the line three nautical miles from the coast line of Louisiana, as said three mile line has been decreed by the Supreme Court of the United States, as determined by a Special Master appointed therein, in litigation styled **United States v. State of Louisiana et al No. 9 Original**, in 1975, all as more particularly outlined on a plat in the Office of Mineral Resources, Department of Natural Resources. All bearings, distances and coordinates are based on the Louisiana Coordinate System of 1927, (South Zone).

NOTE: The above description of the Tract nominated for lease has been provided and corrected, where required, exclusively by the nomination party. Any mineral lease selected from this Tract and awarded by the Louisiana State Mineral Board shall be without warranty of any kind, either express, implied, or statutory, including, but not limited to, the implied warranties of merchantability and fitness for a particular purpose. Should the mineral lease awarded by the Louisiana State Mineral Board be subsequently modified, cancelled or abrogated due to the existence of conflicting leases, operating agreements, private claims or other future obligations or conditions which may affect all or any portion of the leased Tract, it shall not relieve the Lessee of the obligation to pay any bonus due thereon to the Louisiana State Mineral Board, nor shall the Louisiana State Mineral Board be obligated to refund any consideration

paid by the Lessor prior to such modification, cancellation, or abrogation, including, but not limited to, bonuses, rentals and royalties.

NOTE: The above described tract may be in the vicinity of existing shell reefs where drilling and dredging operations must be conducted in strict conformity with the regulations adopted by the Louisiana Department of Wildlife and Fisheries and/or the U.S. Corps of Engineers, U.S. Army.

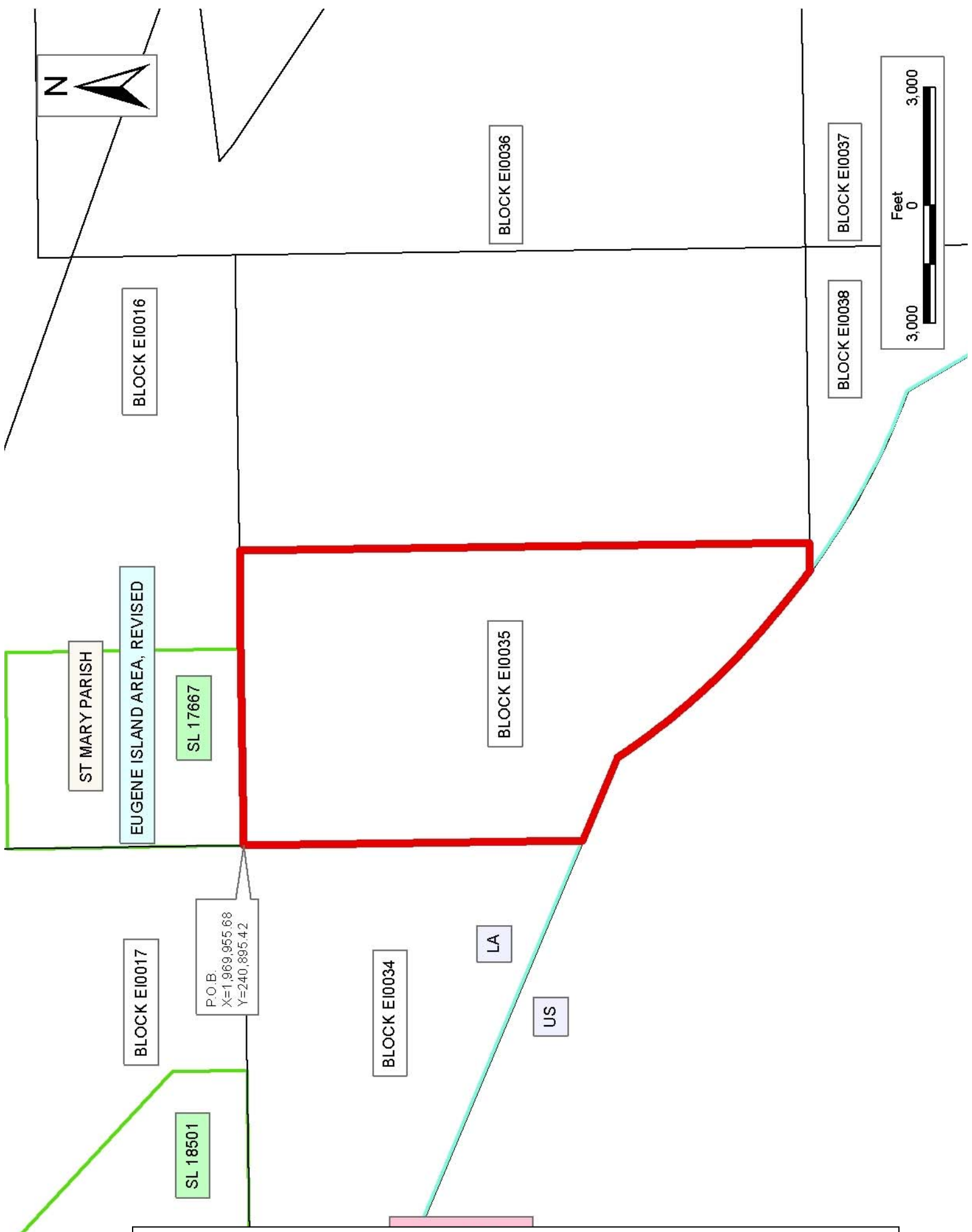
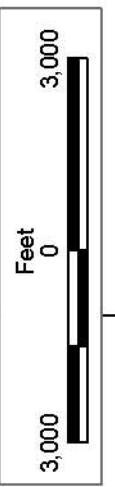
NOTE: The State of Louisiana does hereby reserve, and this lease shall be subject to, the imprescriptible right of surface use in the nature of a servitude in favor of the Department of Natural Resources, including its Offices and Commissions, for the sole purpose of implementing, constructing, servicing and maintaining approved coastal zone management and/or restoration projects. Utilization of any and all rights derived under this lease by the mineral lessee, its agents, successors or assigns, shall not interfere with nor hinder the reasonable surface use by the Department of Natural Resources, its Offices or Commissions, as herein above reserved.

NOTE: It appears, according to our records, that a portion of this Tract is located within the restrictive safety fairway area as set out by the Corps of Engineers, U.S. Army and/or the restrictive anchorage area as set out by the U.S. Coast Guard.

NOTE: The Department of Wildlife and Fisheries has designated certain areas in the coastal waters of the State of Louisiana as Oyster Seed Bed Areas. The exact location of those Seed Bed Areas must be obtained from the Department of Wildlife and Fisheries and any work done under a mineral lease from the State of Louisiana may necessarily be conducted in conformity with the rules and regulations promulgated by the said Department of Wildlife and Fisheries for Oyster Seed Bed Areas.

Applicant: ACADIAN LAND SERVICES, L.L.C.

Bidder	Cash Payment	Price/Acre	Rental	Oil	Gas	Other



ST MARY PARISH

EUGENE ISLAND AREA, REVISED

SL 17667

SL 18501

P.O.B.
X=1,969,955.68
Y=240,895.42

BLOCK E10017

BLOCK E10034

LA

US

BLOCK E10035

BLOCK E10036

BLOCK E10038

BLOCK E10037

TRACT 37649 - Portion of Block 7, South Timbalier Area, Revised, Terrebonne Parish, Louisiana

The beds and bottoms of all water bodies belonging to the State of Louisiana located in Block 7, South Timbalier Area, Revised, together with any present lands formed by accretion to the shoreline or islands formed therein, located in Terrebonne Parish, Louisiana, owned by and not presently under mineral lease as of August 10, 2005, from the State of Louisiana, the geographical area of which is more fully described as follows: Beginning at a point on the West Line of Block 7, South Timbalier Area, Revised, having Coordinates of X = 2,186,425.06 and Y = 135,960.91; thence Northeasterly on a straight line to a point having Coordinates of X = 2,186,596.00 and Y = 135,997.00; thence Northeasterly on a straight line to a point having Coordinates of X = 2,192,330.00 and Y = 136,944.00; thence Northeasterly on a straight line to a point having Coordinates X = 2,198,296.00 and Y = 138,515.00; thence Northeasterly on a straight line to a point on the East Line of said Block 7 having Coordinates of X = 2,202,046.02 and Y = 139,683.33; thence South 6,570.04 feet on the East line of said Block 7 to a point having Coordinates of X = 2,202,046.02 and Y = 133,113.29; thence West 15,606.47 feet to a point on the West Line of said Block 7 having Coordinates of X = 2,186,439.55 and Y = 133,113.29; thence North 00 degrees 17 minutes 30 seconds West 2,847.66 feet to the point of beginning, containing approximately **1,600.25 acres**, all as more particularly outlined on a plat on file in the Office of Mineral Resources, Department of Natural Resources. All bearings, distances and coordinates are based on Louisiana Coordinate System of 1927, (North or South Zone).

NOTE: The above description of the Tract nominated for lease has been provided and corrected, where required, exclusively by the nomination party. Any mineral lease selected from this Tract and awarded by the Louisiana State Mineral Board shall be without warranty of any kind, either express, implied, or statutory, including, but not limited to, the implied warranties of merchantability and fitness for a particular purpose. Should the mineral lease awarded by the Louisiana State Mineral Board be subsequently modified, cancelled or abrogated due to the existence of conflicting leases, operating agreements, private claims or other future obligations or conditions which may affect all or any portion of the leased Tract, it shall not relieve the Lessee of the obligation to pay any bonus due thereon to the Louisiana State Mineral Board, nor shall the Louisiana State Mineral Board be obligated to refund any consideration paid by the Lessor prior to such modification, cancellation, or abrogation, including, but not limited to, bonuses, rentals and royalties.

NOTE: The Office of Mineral Resources will require a minimum bonus of \$250.00 per acre and a minimum royalty of 21.5%.

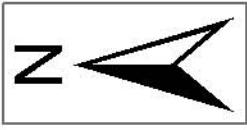
NOTE: The State of Louisiana does hereby reserve, and this lease shall be subject to, the imprescriptible right of surface use in the nature of a servitude in favor of the Department of Natural Resources, including its

Offices and Commissions, for the sole purpose of implementing, constructing, servicing and maintaining approved coastal zone management and/or restoration projects. Utilization of any and all rights derived under this lease by the mineral lessee, its agents, successors or assigns, shall not interfere with nor hinder the reasonable surface use by the Department of Natural Resources, its Offices or Commissions, as herein above reserved.

NOTE: The Department of Wildlife and Fisheries has designated certain areas in the coastal waters of the State of Louisiana as Oyster Seed Bed Areas. The exact location of those Seed Bed Areas must be obtained from the Department of Wildlife and Fisheries and any work done under a mineral lease from the State of Louisiana may necessarily be conducted in conformity with the rules and regulations promulgated by the said Department of Wildlife and Fisheries for Oyster Seed Bed Areas.

Applicant: ANCHOR LAND & EXPLORATION COMPANY, LLC

Bidder	Cash Payment	Price/Acre	Rental	Oil	Gas	Other



TERREBONNE PARISH

LAKE PELTO

SHIP SHOAL AREA

SOUTH TIMBALIER AREA, REVISED

SOUTH PELTO AREA

BLOCK SS0042

BLOCK SS0043

BLOCK SS0067

BLOCK ST0007

BLOCK ST0008

BLOCK PL0001

P.O.B.
X=2,186,425.06
Y=135,960.91

SL 18409

SL 16558

SL 15074

SL 15071

SL 17189



TRACT 37650 - Portion of Blocks 43, and 67, Ship Shoal Area, Terrebonne Parish, Louisiana

The beds and bottoms of all water bodies belonging to the State of Louisiana located in Blocks 43, and 67, Ship Shoal Area, together with any present lands formed by accretion to the shoreline or islands formed therein, located in Terrebonne Parish, Louisiana, owned by and not presently under mineral lease as of August 10, 2005, from the State of Louisiana, the geographical area of which is more fully described as follows: Beginning at the Northwest Corner of Block 67, and the Southwest Corner of Block 43, Ship Shoal Area, having Coordinates of X = 2,171,600.00 and Y = 130,197.44; thence North 2,367.56 feet along the West line of said Block 43 to the Southwest corner of State Lease No. 17190 having Coordinates of X = 2,171,600.00 and Y = 132,565.00; thence South 88 degrees 14 minutes 38 seconds East 1,272.60 feet and North 3,029.87 feet along the South and East boundaries of said State Lease No. 17190 to its Northeast corner and the West corner of State Lease No. 17596, having Coordinates of X = 2,172,872.00 and Y = 135,555.87; thence South 32 degrees 57 minutes 16 seconds East 2,093.99 feet and North 46 degrees 01 minutes 37 seconds East 2,616.36 feet along the boundaries of said State Lease No. 17596 to its East corner having Coordinates of X = 2,175,893.98 and Y = 135,615.38; thence Northeasterly on a straight line to a point having Coordinates of X = 2,177,220.00 and Y = 135,641.49; thence South 8,369.72 feet to a point within Block 67 located on the North Boundary of State Lease No. 17308, having Coordinates of X = 2,177,220.00 and Y = 127,271.77, thence along the boundaries of said State Lease No. 17308 the following: West 620.00 feet, South 1000.00 feet, East 2000.00 feet and South 720.59 feet to its most Southern Southwest corner, said point also being the Northwest corner of State Lease No. 17309, having Coordinates of X = 2,178,600.00 and Y = 125,551.18; thence along the boundary of said State Lease No. 17309 the following: South 929.41 feet, South 28 degrees 47 minutes 12 seconds West 5,191.58 feet, South 51 degrees 20 minutes 25 seconds East 1,280.63 feet and North 47 degrees 07 minutes 16 seconds East 3,821.00 feet to a corner having Coordinates X = 2,179,900.00 and Y = 121,871.77; thence South 4,642.55 feet to a point on the Three Mile Line as set out in the June, 1975 decree of the Supreme Court having Coordinates X = 2,179,900.00 and Y = 117,229.22; thence Northwesterly on a straight line to a point having Coordinates X = 2,179,579.00 and Y = 117,248.00; thence Northwesterly on an arc having a radius of 18,240.60 feet and a center at X = 2,180,645.00 and Y = 135,457.00 to a point having Coordinates X = 2,177,979.00 and Y = 117,412.00; thence Southwesterly on straight line to a point having Coordinates of X = 2,172,700.00 and Y = 117,308.00; thence Southwesterly on a straight line to a point having Coordinates of X = 2,171,638.00 and Y = 117,082.00; thence Southwesterly on an arc having a radius of 18,240.60 feet and a center at X = 2,167,836.00 and Y = 134,922.00 to a point on the West line of said Block 67, having Coordinates of X = 2,171,600.00 and Y = 117,073.98; thence North 13,123.46 feet along the West Line of said Block 67 to the point of beginning, containing approximately **2,450.34 acres, LESS AND EXCEPT** that portion thereof, if any, lying seaward of the line three nautical miles

from the coast line of Louisiana, as said three mile line has been decreed by the Supreme Court of the United States, as determined by a Special Master appointed therein, in litigation styled **United States v. State of Louisiana et al No. 9 Original**, in 1975, all as more particularly outlined on a plat in the Office of Mineral Resources, Department of Natural Resources. All bearings, distances and coordinates are based on the Louisiana Coordinate System of 1927, (South Zone).

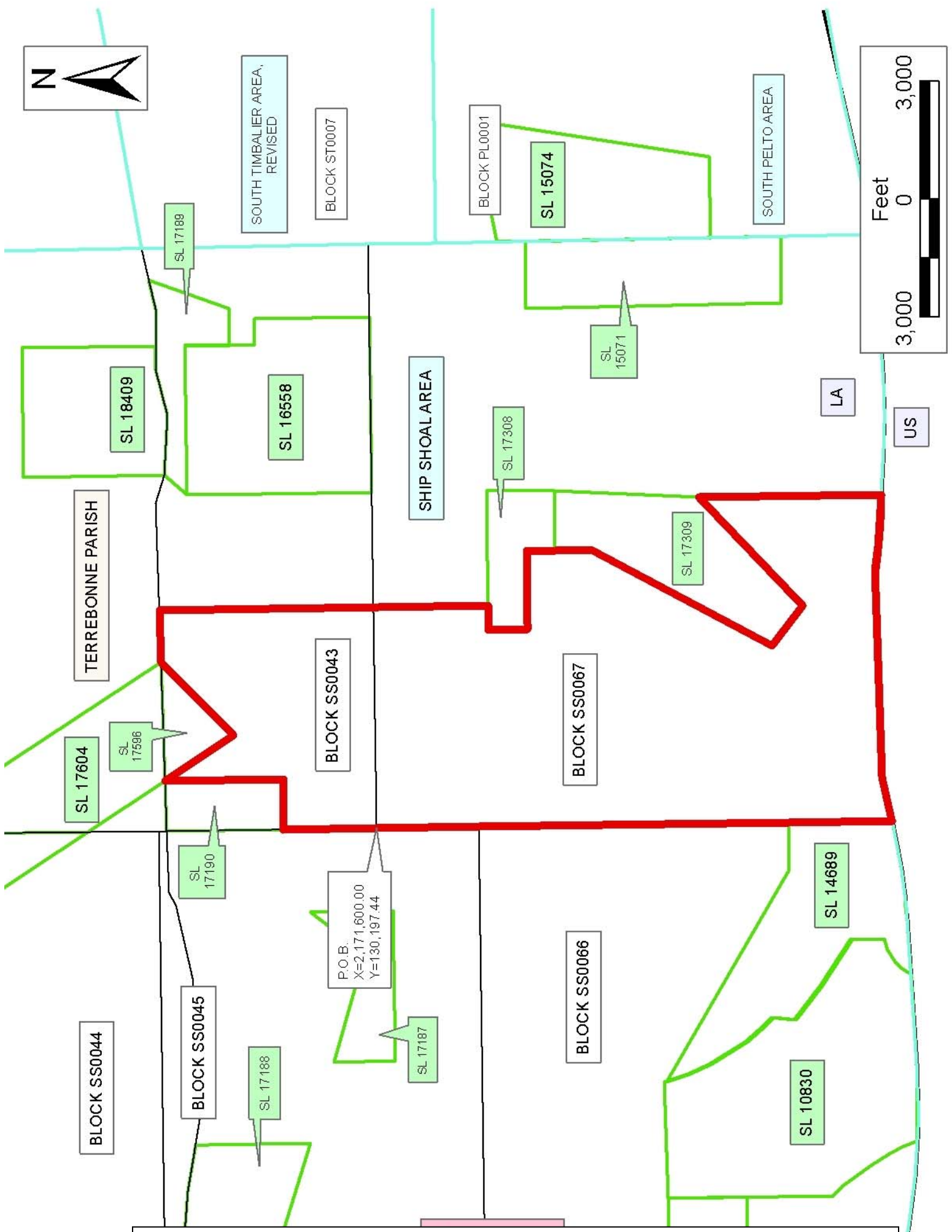
NOTE: The above description of the Tract nominated for lease has been provided and corrected, where required, exclusively by the nomination party. Any mineral lease selected from this Tract and awarded by the Louisiana State Mineral Board shall be without warranty of any kind, either express, implied, or statutory, including, but not limited to, the implied warranties of merchantability and fitness for a particular purpose. Should the mineral lease awarded by the Louisiana State Mineral Board be subsequently modified, cancelled or abrogated due to the existence of conflicting leases, operating agreements, private claims or other future obligations or conditions which may affect all or any portion of the leased Tract, it shall not relieve the Lessee of the obligation to pay any bonus due thereon to the Louisiana State Mineral Board, nor shall the Louisiana State Mineral Board be obligated to refund any consideration paid by the Lessor prior to such modification, cancellation, or abrogation, including, but not limited to, bonuses, rentals and royalties.

NOTE: The State of Louisiana does hereby reserve, and this lease shall be subject to, the imprescriptible right of surface use in the nature of a servitude in favor of the Department of Natural Resources, including its Offices and Commissions, for the sole purpose of implementing, constructing, servicing and maintaining approved coastal zone management and/or restoration projects. Utilization of any and all rights derived under this lease by the mineral lessee, its agents, successors or assigns, shall not interfere with nor hinder the reasonable surface use by the Department of Natural Resources, its Offices or Commissions, as herein above reserved.

NOTE: The Department of Wildlife and Fisheries has designated certain areas in the coastal waters of the State of Louisiana as Oyster Seed Bed Areas. The exact location of those Seed Bed Areas must be obtained from the Department of Wildlife and Fisheries and any work done under a mineral lease from the State of Louisiana may necessarily be conducted in conformity with the rules and regulations promulgated by the said Department of Wildlife and Fisheries for Oyster Seed Bed Areas.

Applicant: ANCHOR LAND & EXPLORATION COMPANY, LLC

Bidder	Cash Payment	Price/Acre	Rental	Oil	Gas	Other



TRACT 37651 - Portion of Blocks 43, and 67, Ship Shoal Area, Terrebonne Parish, Louisiana

The beds and bottoms of all water bodies belonging to the State of Louisiana located in Blocks 43, and 67, Ship Shoal Area, together with any present lands formed by accretion to the shoreline or islands formed therein, located in Terrebonne Parish, Louisiana, owned by and not presently under mineral lease as of August 10, 2005, from the State of Louisiana, the geographical area of which is more fully described as follows: Beginning at a point on the North line of Block 67, Ship Shoal Area, and the South Line of Block 43, Ship Shoal Area, also being the Southwest corner of State Lease No. 16558 having Coordinates of X = 2,180,150.00 and Y = 130,197.44; thence along the boundary of said State Lease No. 16558 the following: East 4,457.00 feet, North 2,914.45 feet, West 669.24 feet and North 652.11 feet to a point on the South boundary of State Lease No. 17189 having Coordinates of X = 2,183,937.76 and Y = 133,764.00; thence along the boundary of said State Lease No. 17189 the following: East 932.24 feet and North 20 degrees 19 minutes 23 seconds East 2,159.43 feet to a point on the North boundary of said Block 43 having Coordinates of X = 2,185,619.93 and Y = 135,788.82; thence Northeasterly on a straight line to the Northeast corner of said Block 43 having Coordinates of X = 2,186,425.06 and Y = 135,960.91; thence South 00 degrees 17 minutes 30 seconds East 9,763.54 feet along the East line of said Block 43 and the East line of Block 67 to the Northeast corner of State Lease No. 15071 having Coordinates of X = 2,186,474.74 and Y = 126,197.50; thence along the boundary of said State Lease No. 15071 the following: West 1,700.00 feet, South 00 degrees 17 minutes 30 seconds East 6,500.14 feet, and East 1,700.00 feet to its Southeast corner located on the East line of said Block 67 having Coordinates of X = 2,186,507.82 and Y = 119,697.44; thence South 00 degrees 17 minutes 30 seconds East 2,244.73 feet along the East line of said Block 67 to a point of intersection with the three mile line as set out in the June 1975 decree of the Supreme Court having Coordinates of X = 2,186,519.25 and Y = 117,452.74; thence Southwesterly on a arc having a radius of 18,240.60 feet and a center at X = 2,184,788.00 and Y = 135,611.00 to a point having Coordinates of X = 2,185,156.00 and Y = 117,374.00; thence Southwesterly on a arc having a radius of 18,240.60 feet and a center at X = 2,182,166.00 and Y = 135,368.00 to a point having Coordinates of X = 2,181,100 and Y = 117,159; thence Northwesterly on a straight line to a point having Coordinates of X = 2,179,900.00 and Y = 117,229.00; thence North 4,642.56 feet to the Southeast corner of State Lease No. 17309 having Coordinates of X = 2,179,900.00 and Y = 121,871.77; thence North 3 degrees 15 minutes 7 seconds East 3,685.34 feet along the East Line of said State Lease No. 17309 to its Northeast corner and the Southeast corner of State Lease No. 17308 having Coordinates of X = 2,180,109.06 and Y = 125,551.18; thence along the East and North Boundaries of said State Lease No. 17308 the following: North 3 degrees 15 minutes 6 seconds East 721.75 feet, North 1,000 feet and West 2,930.00 feet to a point having Coordinates of X = 2,177,220.00 and Y = 127,271.77; thence North 8,369.72 feet to a point having Coordinates of X = 2,177,220.00 and Y = 135,641.49;

thence Northeasterly on a straight line to a point having Coordinates of X = 2,179,937.00 and Y = 135,695.00; thence Southeasterly on a straight line to the Northwest corner of State Lease No. 17189, having Coordinates of X = 2,180,645.00 and Y = 135,457.00; thence South 41 degrees 37 minutes 38 seconds West 745.17 feet along the Western boundary of said State Lease No. 17189 to its Southwest corner and the Northwest corner of said State Lease No. 16558, having Coordinates of X = 2,180,150.00 and Y = 134,900.00; thence South 4,702.56 feet along the West boundary of said State Lease No. 16558 to the point of beginning, containing approximately **2,457.45 acres, LESS AND EXCEPT** that portion thereof, if any, lying seaward of the line three nautical miles from the coast line of Louisiana, as said three mile line has been decreed by the Supreme Court of the United States, as determined by a Special Master appointed therein, in litigation styled **United States v. State of Louisiana et al No. 9 Original**, in 1975, all as more particularly outlined on a plat in the Office of Mineral Resources, Department of Natural Resources. All bearings, distances and coordinates are based on the Louisiana Coordinate System of 1927, (South Zone).

NOTE: The above description of the Tract nominated for lease has been provided and corrected, where required, exclusively by the nomination party. Any mineral lease selected from this Tract and awarded by the Louisiana State Mineral Board shall be without warranty of any kind, either express, implied, or statutory, including, but not limited to, the implied warranties of merchantability and fitness for a particular purpose. Should the mineral lease awarded by the Louisiana State Mineral Board be subsequently modified, cancelled or abrogated due to the existence of conflicting leases, operating agreements, private claims or other future obligations or conditions which may affect all or any portion of the leased Tract, it shall not relieve the Lessee of the obligation to pay any bonus due thereon to the Louisiana State Mineral Board, nor shall the Louisiana State Mineral Board be obligated to refund any consideration paid by the Lessor prior to such modification, cancellation, or abrogation, including, but not limited to, bonuses, rentals and royalties.

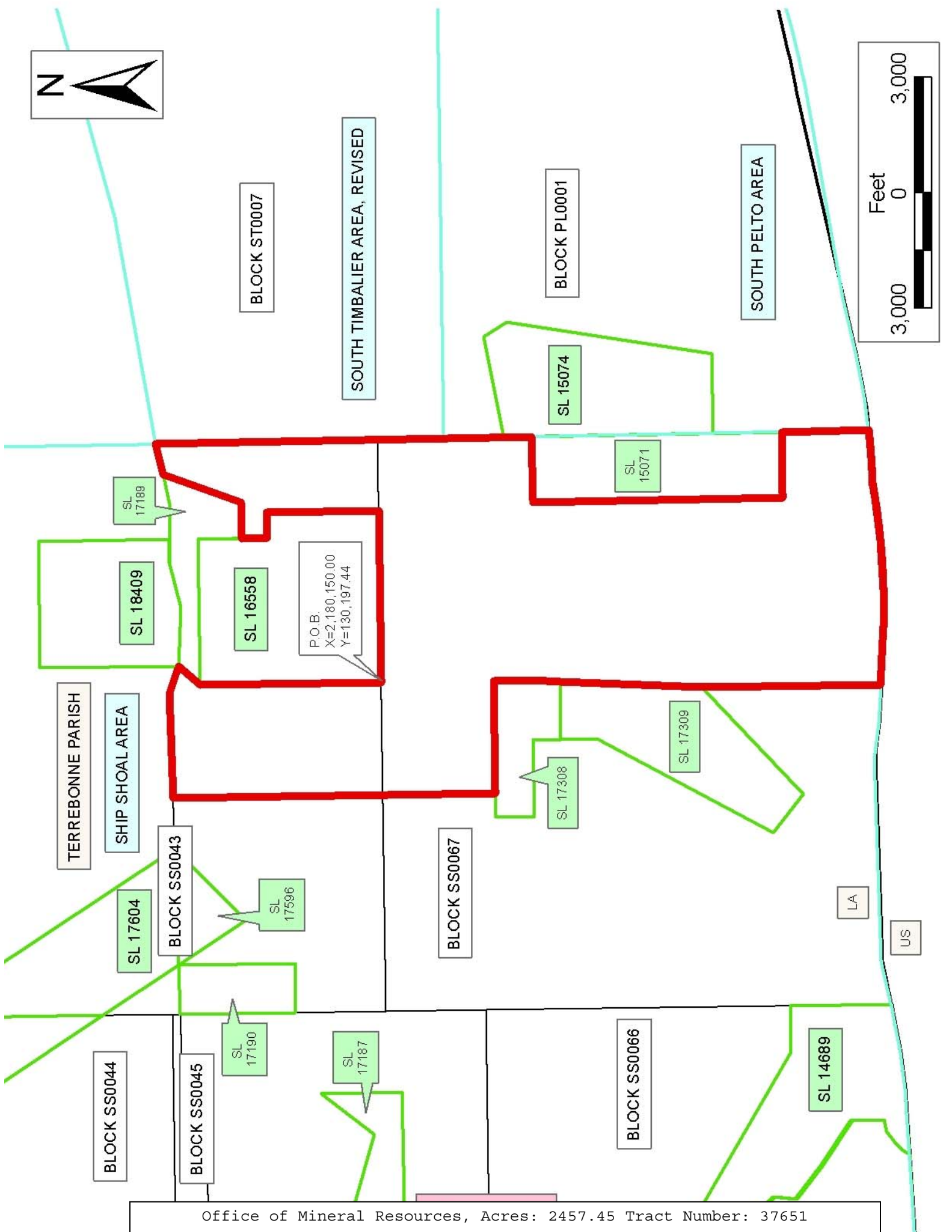
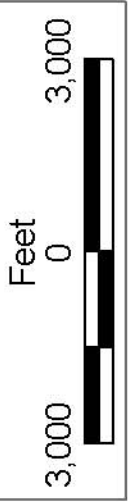
NOTE: The Office of Mineral Resources will require a minimum bonus of \$250 per acre and a minimum royalty of 21.5%.

NOTE: The State of Louisiana does hereby reserve, and this lease shall be subject to, the imprescriptible right of surface use in the nature of a servitude in favor of the Department of Natural Resources, including its Offices and Commissions, for the sole purpose of implementing, constructing, servicing and maintaining approved coastal zone management and/or restoration projects. Utilization of any and all rights derived under this lease by the mineral lessee, its agents, successors or assigns, shall not interfere with nor hinder the reasonable surface use by the Department of Natural Resources, its Offices or Commissions, as herein above reserved.

NOTE: The Department of Wildlife and Fisheries has designated certain areas in the coastal waters of the State of Louisiana as Oyster Seed Bed Areas. The exact location of those Seed Bed Areas must be obtained from the Department of Wildlife and Fisheries and any work done under a mineral lease from the State of Louisiana may necessarily be conducted in conformity with the rules and regulations promulgated by the said Department of Wildlife and Fisheries for Oyster Seed Bed Areas.

Applicant: ANCHOR LAND & EXPLORATION COMPANY, LLC

Bidder	Cash Payment	Price/Acre	Rental	Oil	Gas	Other



P.O.B.
X=2,180,150.00
Y=130,197.44

BLOCK SS0044

BLOCK SS0045

BLOCK SS0043

BLOCK SS0067

BLOCK SS0066

BLOCK PL0001

BLOCK ST0007

SOUTH TIMBALIER AREA, REVISED

SOUTH PELTO AREA

TERREBONNE PARISH

SHIP SHOAL AREA

LA

US

TRACT 37652 - Portion of Block 7, South Timbalier Area, Revised, Terrebonne Parish, Louisiana

The beds and bottoms of all water bodies belonging to the State of Louisiana located in Block 7, South Timbalier Area, Revised, together with any present lands formed by accretion to the shoreline or islands formed therein, located in Terrebonne Parish, Louisiana, owned by and not presently under mineral lease as of August 10, 2005, from the State of Louisiana, the geographical area of which is more fully described as follows: Beginning at a point on the West Line of Block 7, South Timbalier Area, Revised, having Coordinates of X = 2,186,439.55 and Y = 133,113.29; thence East 15,606.47 feet to a point on the East Line of said Block 7 having Coordinates of X = 2,202,046.02 and Y = 133,113.29; thence South 4,628.53 feet to the Southeast Corner of said Block 7 having Coordinates of X = 2,202,046.02 and Y = 128,484.76; thence West 15,582.93 feet to its Southwest corner of said Block 7 having Coordinates of X = 2,186,463.09 and Y = 128,484.76; thence North 00 degrees 17 minutes 30 seconds West 4,628.59 feet along the West line of said Block 7 to the point of beginning, containing approximately **1,657.04 acres**, all as more particularly outlined on a plat on file in the Office of Mineral Resources, Department of Natural Resources. All bearings, distances and coordinates are based on Louisiana Coordinate System of 1927, (North or South Zone).

NOTE: The above description of the Tract nominated for lease has been provided and corrected, where required, exclusively by the nomination party. Any mineral lease selected from this Tract and awarded by the Louisiana State Mineral Board shall be without warranty of any kind, either express, implied, or statutory, including, but not limited to, the implied warranties of merchantability and fitness for a particular purpose. Should the mineral lease awarded by the Louisiana State Mineral Board be subsequently modified, cancelled or abrogated due to the existence of conflicting leases, operating agreements, private claims or other future obligations or conditions which may affect all or any portion of the leased Tract, it shall not relieve the Lessee of the obligation to pay any bonus due thereon to the Louisiana State Mineral Board, nor shall the Louisiana State Mineral Board be obligated to refund any consideration paid by the Lessor prior to such modification, cancellation, or abrogation, including, but not limited to, bonuses, rentals and royalties.

NOTE: The Office of Mineral Resources will require a minimum bonus of \$250.00 per acre and a minimum royalty of 21.5%.

NOTE: The State of Louisiana does hereby reserve, and this lease shall be subject to, the imprescriptible right of surface use in the nature of a servitude in favor of the Department of Natural Resources, including its Offices and Commissions, for the sole purpose of implementing, constructing, servicing and maintaining approved coastal zone management and/or restoration projects. Utilization of any and all rights derived under this lease by the mineral lessee, its agents, successors or assigns,

shall not interfere with nor hinder the reasonable surface use by the Department of Natural Resources, its Offices or Commissions, as herein above reserved.

NOTE: The Department of Wildlife and Fisheries has designated certain areas in the coastal waters of the State of Louisiana as Oyster Seed Bed Areas. The exact location of those Seed Bed Areas must be obtained from the Department of Wildlife and Fisheries and any work done under a mineral lease from the State of Louisiana may necessarily be conducted in conformity with the rules and regulations promulgated by the said Department of Wildlife and Fisheries for Oyster Seed Bed Areas.

Applicant: ANCHOR LAND & EXPLORATION COMPANY, LLC

Bidder	Cash Payment	Price/Acre	Rental	Oil	Gas	Other



TERREBONNE PARISH

LAKE PELTO

SOUTH TIMBALIER AREA, REVISED

P.O.B.
X=2,186,439.55
Y=133,113.29

BLOCK ST0008

BLOCK ST0007

BLOCK PL0002

BLOCK PL0001

LA

US



SL 18409

SL 17189

BLOCK SS0043

SL 16558

BLOCK SS0067

SHIP SHOAL AREA

SL 15074

SL 15071

SOUTH PELTO AREA

TRACT 37653 - Portion of Block 1, South Pelto Area, Terrebonne Parish, Louisiana

The beds and bottoms of all water bodies belonging to the State of Louisiana located in Block 1, South Pelto Area, together with any present lands formed by accretion to the shoreline or islands formed therein, located in Terrebonne Parish, Louisiana, owned by and not presently under mineral lease as of August 10, 2005, from the State of Louisiana, the geographical area of which is more fully described as follows: Beginning at the Northwest Corner of Block 1, South Pelto Area, having Coordinates of X = 2,186,463.09 and Y = 128,484.76; thence East 15,582.93 feet along the North Line of said Block 1 to its Northeast corner having Coordinates of X = 2,202,046.02 and Y = 128,484.76; thence South 6,982.54 feet along the East line of said Block 1 to a point having Coordinates of X = 2,202,046.02 and Y = 121,502.22; thence South 89 degrees 56 minutes 28 seconds West 13,478.43 feet to the Southeast Corner of State Lease No. 15074 having Coordinates of X = 2,188,567.60 and Y = 121,488.34; thence along the boundary of said State Lease No. 15074 the following courses and distances: North 09 degrees 33 minutes 27 seconds East 5,392.86 feet, North 31 degrees 55 minutes 20 seconds West 708.03 feet, and South 79 degrees 30 minutes 57 seconds West 2,662.00 feet to its Northwest Corner located on the West Line of said Block 1 having Coordinates of X = 2,186,471.06 and Y = 126,922.91; thence North 00 degrees 17 minutes 30 seconds West 1,561.87 feet along the West Line of said Block 1 to the point of beginning, containing approximately **2,164.82 acres**, all as more particularly outlined on a plat on file in the Office of Mineral Resources, Department of Natural Resources. All bearings, distances and coordinates are based on Louisiana Coordinate System of 1927, (North or South Zone).

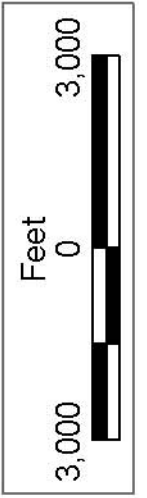
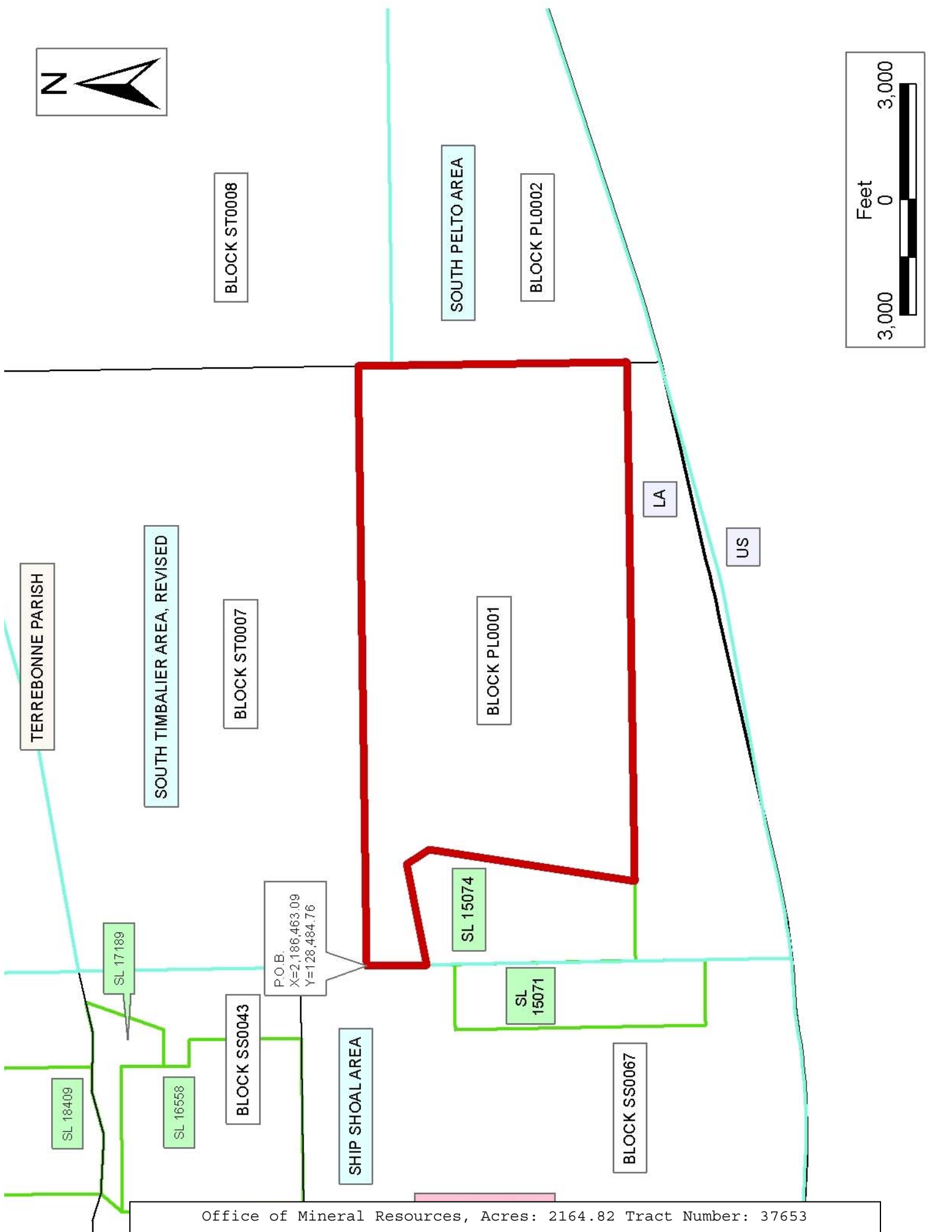
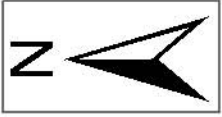
NOTE: The above description of the Tract nominated for lease has been provided and corrected, where required, exclusively by the nomination party. Any mineral lease selected from this Tract and awarded by the Louisiana State Mineral Board shall be without warranty of any kind, either express, implied, or statutory, including, but not limited to, the implied warranties of merchantability and fitness for a particular purpose. Should the mineral lease awarded by the Louisiana State Mineral Board be subsequently modified, cancelled or abrogated due to the existence of conflicting leases, operating agreements, private claims or other future obligations or conditions which may affect all or any portion of the leased Tract, it shall not relieve the Lessee of the obligation to pay any bonus due thereon to the Louisiana State Mineral Board, nor shall the Louisiana State Mineral Board be obligated to refund any consideration paid by the Lessor prior to such modification, cancellation, or abrogation, including, but not limited to, bonuses, rentals and royalties.

NOTE: The State of Louisiana does hereby reserve, and this lease shall be subject to, the imprescriptible right of surface use in the nature of a servitude in favor of the Department of Natural Resources, including its Offices and Commissions, for the sole purpose of implementing,

constructing, servicing and maintaining approved coastal zone management and/or restoration projects. Utilization of any and all rights derived under this lease by the mineral lessee, its agents, successors or assigns, shall not interfere with nor hinder the reasonable surface use by the Department of Natural Resources, its Offices or Commissions, as herein above reserved.

Applicant: ANCHOR LAND & EXPLORATION COMPANY, LLC

Bidder	Cash Payment	Price/Acre	Rental	Oil	Gas	Other



TRACT 37654 - Portion of Block 1, South Pelto Area, Terrebonne Parish, Louisiana

The beds and bottoms of all water bodies belonging to the State of Louisiana located in Block 1, South Pelto Area, together with any present lands formed by accretion to the shoreline or islands formed therein, located in Terrebonne Parish, Louisiana, owned by and not presently under mineral lease as of August 10, 2005, from the State of Louisiana, the geographical area of which is more fully described as follows: Beginning at a point on the West Line of Block 1, South Pelto Area, being the Southwest corner of State Lease No. 15074 having Coordinates of X = 2,186,498.73 and Y = 121,488.34; thence East 2,068.87 feet along the South Line of said State Lease No. 15074 to its Southeast corner having Coordinates of X = 2,188,567.60 and Y = 121,488.34; thence North 89 degrees 56 minutes 28 seconds East 13,478.43 feet to a point on the East Line of said Block 1 having Coordinates of X = 2,202,046.02 and Y = 121,502.22; thence South 861.89 feet along the East line of said Block 1 to a point on the three mile line as set out in the June 1975 decree of the Supreme Court having Coordinates of X = 2,202,046.02 and Y = 120,640.33; thence Southwesterly on a straight line to a point having Coordinates of X = 2,196,975 and Y = 119,305; thence Southwesterly on an arc having a radius of 18,240.60 feet and a center at X = 2,192,330 and Y = 136,944 to a point having Coordinates of X = 2,195,302 and Y = 118,947; thence Southwesterly on a straight line to a point having Coordinates of X = 2,189,988 and Y = 118,070; thence Southwesterly on a straight line to a point having Coordinates of X = 2,188,596 and Y = 117,772; thence Southwesterly on a arc having a radius of 18,240.60 feet and a center at X = 2,184,788 and Y = 135,611 to a point on the West Line of said Block 1 having Coordinates of X = 2,186,519.25 and Y = 117,452.74; thence North 00 degrees 17 minutes 30 seconds West 4,035.65 feet on the West line of said Block 1 to the point of beginning, containing approximately **934.08 acres, LESS AND EXCEPT** that portion thereof, if any, lying seaward of the line three nautical miles from the coast line of Louisiana, as said three mile line has been decreed by the Supreme Court of the United States, as determined by a Special Master appointed therein, in litigation styled **United States v. State of Louisiana et al No. 9 Original**, in 1975, all as more particularly outlined on a plat in the Office of Mineral Resources, Department of Natural Resources. All bearings, distances and coordinates are based on the Louisiana Coordinate System of 1927, (South Zone).

NOTE: The above description of the Tract nominated for lease has been provided and corrected, where required, exclusively by the nomination party. Any mineral lease selected from this Tract and awarded by the Louisiana State Mineral Board shall be without warranty of any kind, either express, implied, or statutory, including, but not limited to, the implied warranties of merchantability and fitness for a particular purpose. Should the mineral lease awarded by the Louisiana State Mineral Board be subsequently modified, cancelled or abrogated due to the existence of conflicting leases, operating agreements, private claims or other future obligations or conditions which may affect all or any portion

of the leased Tract, it shall not relieve the Lessee of the obligation to pay any bonus due thereon to the Louisiana State Mineral Board, nor shall the Louisiana State Mineral Board be obligated to refund any consideration paid by the Lessor prior to such modification, cancellation, or abrogation, including, but not limited to, bonuses, rentals and royalties.

NOTE: The State of Louisiana does hereby reserve, and this lease shall be subject to, the imprescriptible right of surface use in the nature of a servitude in favor of the Department of Natural Resources, including its Offices and Commissions, for the sole purpose of implementing, constructing, servicing and maintaining approved coastal zone management and/or restoration projects. Utilization of any and all rights derived under this lease by the mineral lessee, its agents, successors or assigns, shall not interfere with nor hinder the reasonable surface use by the Department of Natural Resources, its Offices or Commissions, as herein above reserved.

Applicant: ANCHOR LAND & EXPLORATION COMPANY, LLC

Bidder	Cash Payment	Price/Acre	Rental	Oil	Gas	Other

