

# SPECIAL NOTICE

On Tuesday, July 5, 2005, the Office of Mineral Resources on behalf of the State Mineral Board advertised in Notice of Publication for receipt of sealed bids on or before **12:00 o'clock p.m. on Tuesday, August 9, 2005**, for State Leases to be awarded upon **Tract Nos. 37636 through 37747**, inclusive at its **August 10, 2005** Lease Sale. Within said advertisement was an incorrect description for **Tract No. 37741 Plaquemines Parish**. By virtue of this public notice, **Tract No. 37741** in Plaquemines Parish, Louisiana is hereby corrected as follows:

## **TRACT 37731 - Jefferson Parish, Louisiana**

All of the lands now or formerly constituting the beds and bottoms of all water bodies of every nature and description the title of which vests in the State of Louisiana, together with all islands arising therein and other lands formed by accretion or by reliction, where allowed by law, excepting tax adjudicated lands, and not presently under mineral lease on August 10, 2005, situated in Jefferson Parish, Louisiana, and more particularly described as follows: Beginning at the southwest corner of State Lease No. 17966 having Coordinates of X = 2,404,014.19 and Y = 308,447.75; thence East 5,000.00 feet along the south line of said State Lease No. 17966 to its Southeast corner having Coordinates of X = 2,409,014.19 and Y = 308,447.75; thence South 39 degrees 05 minutes 53 seconds East 3,259.42 feet to a point having Coordinates of X = 2,411,069.74 and Y = 305,918.23; thence South 5,478.34 feet to a point having Coordinates of X = 2,411,069.74 and Y = 300,439.89; thence North 63 degrees 17 minutes 15 seconds West 17,906.22 feet to a point having Coordinates of X = 2,395,074.60 and Y = 308,489.00; thence North 6,930.65 feet to a point having Coordinates of X = 2,395,074.60 and Y = 315,419.65; thence South 64 degrees 45 minutes 10 seconds East 8,822.98 feet to a point having Coordinates of X = 2,403,054.77 and Y = 311,656.43; thence East 2,755.44 feet to a point having Coordinates of X = 2,405,810.21 and Y = 311,656.43; thence South 163.01 feet to a point on the North line of said State Lease No. 17966 having Coordinates of X = 2,405,810.21 and Y = 311,493.42; thence along the boundaries of said State Lease No. 17966 the following: South 89 degrees 00 minutes 38 seconds West 1,796.29 feet and South 3,014.65 feet to the point of beginning, containing approximately **1,571.00 acres**, all as more particularly outlined on a plat on file in the Office of Mineral Resources, Department of Natural Resources. All bearings, distances and coordinates are based on Louisiana Coordinate System of 1927, (North or South Zone), where applicable.

NOTE: The above description of the Tract nominated for lease has been provided and corrected, where required, exclusively by the nomination

party. Any mineral lease selected from this Tract and awarded by the Louisiana State Mineral Board shall be without warranty of any kind, either express, implied, or statutory, including, but not limited to, the implied warranties of merchantability and fitness for a particular purpose. Should the mineral lease awarded by the Louisiana State Mineral Board be subsequently modified, cancelled or abrogated due to the existence of conflicting leases, operating agreements, private claims or other future obligations or conditions which may affect all or any portion of the leased Tract, it shall not relieve the Lessee of the obligation to pay any bonus due thereon to the Louisiana State Mineral Board, nor shall the Louisiana State Mineral Board be obligated to refund any consideration paid by the Lessor prior to such modification, cancellation, or abrogation, including, but not limited to, bonuses, rentals and royalties.

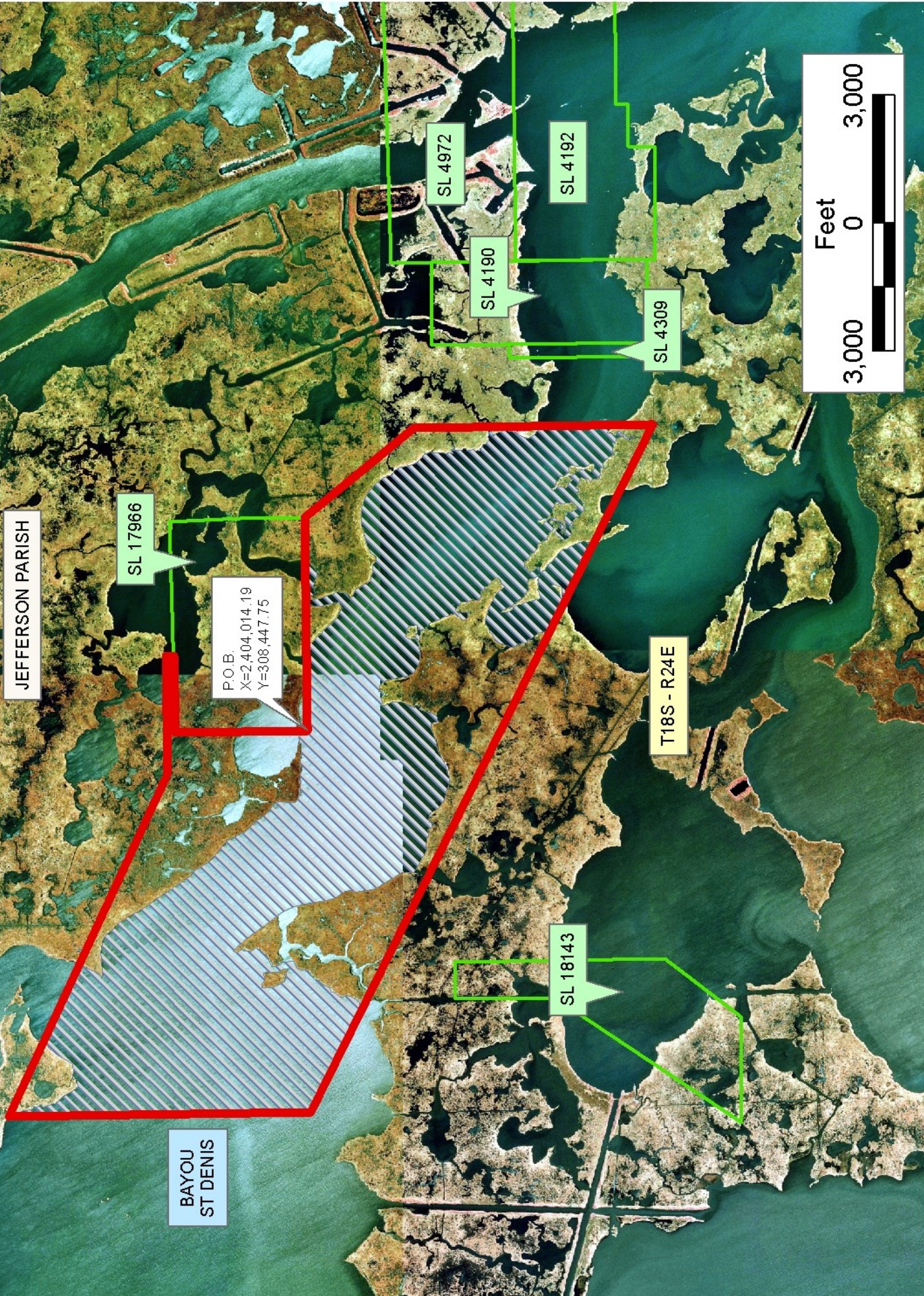
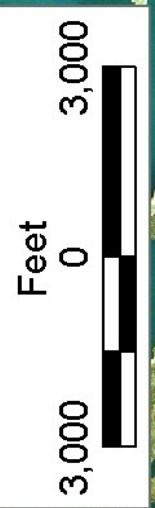
NOTE: The State of Louisiana does hereby reserve, and this lease shall be subject to, the imprescriptible right of surface use in the nature of a servitude in favor of the Department of Natural Resources, including its Offices and Commissions, for the sole purpose of implementing, constructing, servicing and maintaining approved coastal zone management and/or restoration projects. Utilization of any and all rights derived under this lease by the mineral lessee, its agents, successors or assigns, shall not interfere with nor hinder the reasonable surface use by the Department of Natural Resources, its Offices or Commissions, as herein above reserved.

NOTE: The Department of Wildlife and Fisheries has designated certain areas in the coastal waters of the State of Louisiana as Oyster Seed Bed Areas. The exact location of those Seed Bed Areas must be obtained from the Department of Wildlife and Fisheries and any work done under a mineral lease from the State of Louisiana may necessarily be conducted in conformity with the rules and regulations promulgated by the said Department of Wildlife and Fisheries for Oyster Seed Bed Areas.

Applicant: LESLIE M. COOPER

Bidder	Cash Payment	Price/Acre	Rental	Oil	Gas	Other





P.O.B.  
X=2,404,014.19  
Y=308,447.75

Office of Mineral Resources, Acres: 1571 Tract Number: 37731

1,571. +/- ACS.



