

TRACT 34535 - PORTION OF BLOCK 3, EAST CAMERON AREA, REVISED, Cameron Parish, Louisiana

That portion of Block 3, East Cameron Area, Revised, Cameron Parish, Louisiana, belonging to the State of Louisiana and not under mineral lease on July 10, 2002, described as follows: Beginning at the Southeast corner of Block 3, East Cameron Area, Revised, having Coordinates of X = 1,493,033.33 and Y = 360,000.00; thence West along the South line of said Block 3 4,736.33 feet to a point having Coordinates of X = 1,488,297.00 and Y = 360,000.00; thence North 9,617.00 feet to a point having Coordinates of X = 1,488,297.00 and Y = 369,617.00; thence East to a point on the East line of said Block 3 having Coordinates of X = 1,493,033.33 and Y = 369,617.00; thence South along the East line of said Block 3 9,617.00 feet to the point of beginning, containing approximately **1,045.67 acres**, as shown outlined on a plat on file in the Office of Mineral Resources, Department of Natural Resources, as provided by the applicant. All bearings, distances and coordinates are based on Louisiana Coordinate System of 1927 (South Zone).

NOTE: The above description of the tract nominated for lease has been provided exclusively by the party nominating the tract for lease.

Maps depicting the nominated tract, containing the bearings, distances and coordinates of the nominated tract based on the Louisiana Coordinate System of 1927, North or South Zone, as applicable, are available for public inspection and review at the offices of the Louisiana State Mineral Board from 10:00 a.m. to 3:00 p.m. Monday - Friday.

Any mineral lease selected from the nominated tract and awarded by the Louisiana State Mineral Board shall be without warranty of any kind, either express, implied, or statutory, including, but not limited to, the implied warranties or merchantability and fitness for a particular purpose. Should the mineral lease awarded by the Louisiana State Mineral Board be subsequently modified, cancelled or abrogated due to the existence of conflicting leases, operating agreements, private claims or other existing or future obligations or conditions which may affect all or any portion of the leased tract, it shall not relieve the Lessee of the obligation to pay any bonus due thereon to the Louisiana State Mineral Board, nor shall the Louisiana State Mineral Board be obligated to refund any consideration paid by the Lessee prior to such modification, cancellation, or abrogation, including, but not limited to, bonuses, rents and royalties.

NOTE: The State of Louisiana does hereby reserve, and this lease shall be subject to, the imprescriptible right of surface use in the nature of a servitude in favor of the Department of Natural Resources and/or the Louisiana Department of Wildlife and Fisheries, including its Offices and Commissions, for the sole purpose of implementing, constructing, servicing

and maintaining approved coastal zone management and/or restoration projects. Utilization of any and all rights derived under this lease by the mineral lessee, its agents, successors or assigns, shall not interfere with nor hinder the reasonable surface use by the Department of Natural Resources and/or the Louisiana Department of Wildlife and Fisheries, its Offices or Commissions, as hereinabove reserved.

Applicant: Leslie L. Moore

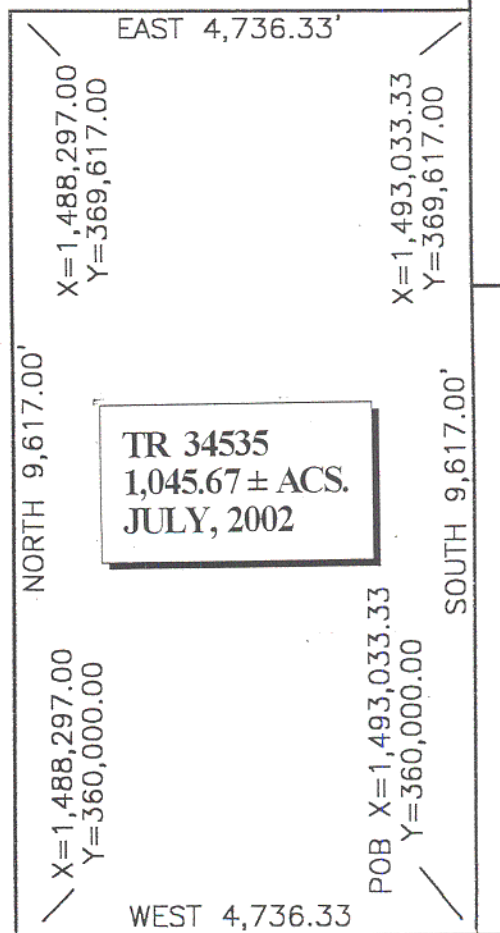
EAST CAMERON AREA, REVISED
Cameron Parish, Louisiana



0 1000 2000

Scale: 1" = 2,000'

Block 3



TRACT 34536 - PORTION OF BLOCK 4, EAST CAMERON AREA, REVISED, Cameron Parish, Louisiana

That portion of Block 4, East Cameron Area, Revised, Cameron Parish, Louisiana, belonging to the State of Louisiana and not under mineral lease on July 10, 2002, described as follows: Beginning at the Southwest corner of Block 4, East Cameron Area, Revised, having Coordinates of X = 1,493,033.33 and Y = 360,000.00; thence North along the West line of said Block 4 17,611.20 feet to the Northwest corner of said Block 4 having Coordinates of X = 1,493,033.33 and Y = 377,611.20; thence along the North line of said Block 4 Southeasterly to a point having Coordinates of X = 1,495,367.00 and Y = 376,439.36; thence South 13,239.36 feet to the Northwest corner of State Lease No. 16980 having Coordinates of X = 1,495,367.00 and Y = 363,200.00; thence continue South 3,200.00 feet along the West line of said State Lease No. 16980 to its Southwest corner having Coordinates of X = 1,495,367.00 and Y = 360,000.00; thence West 2,333.67 feet to the point of beginning, containing approximately **912.11 acres**, as shown outlined on a plat on file in the Office of Mineral Resources, Department of Natural Resources, as provided by the applicant. All bearings, distances and coordinates are based on Louisiana Coordinate System of 1927 (South Zone).

NOTE: The above description of the tract nominated for lease has been provided exclusively by the party nominating the tract for lease.

Maps depicting the nominated tract, containing the bearings, distances and coordinates of the nominated tract based on the Louisiana Coordinate System of 1927, North or South Zone, as applicable, are available for public inspection and review at the offices of the Louisiana State Mineral Board from 10:00 a.m. to 3:00 p.m. Monday - Friday.

Any mineral lease selected from the nominated tract and awarded by the Louisiana State Mineral Board shall be without warranty of any kind, either express, implied, or statutory, including, but not limited to, the implied warranties or merchantability and fitness for a particular purpose. Should the mineral lease awarded by the Louisiana State Mineral Board be subsequently modified, cancelled or abrogated due to the existence of conflicting leases, operating agreements, private claims or other existing or future obligations or conditions which may affect all or any portion of the leased tract, it shall not relieve the Lessee of the obligation to pay any bonus due thereon to the Louisiana State Mineral Board, nor shall the Louisiana State Mineral Board be obligated to refund any consideration paid by the Lessee prior to such modification, cancellation, or abrogation, including, but not limited to, bonuses, rents and royalties.

NOTE: The State of Louisiana does hereby reserve, and this lease shall be subject to, the imprescriptible right of surface use in the nature of a

servitude in favor of the Department of Natural Resources and/or the Louisiana Department of Wildlife and Fisheries, including its Offices and Commissions, for the sole purpose of implementing, constructing, servicing and maintaining approved coastal zone management and/or restoration projects. Utilization of any and all rights derived under this lease by the mineral lessee, its agents, successors or assigns, shall not interfere with nor hinder the reasonable surface use by the Department of Natural Resources and/or the Louisiana Department of Wildlife and Fisheries, its Offices or Commissions, as hereinabove reserved.

Applicant: Leslie L. Moore



0 1000 2000

Scale: 1" = 2,000'

EAST CAMERON AREA, REVISED

Cameron Parish, Louisiana

TR 34536
912.11 ± ACS.
JULY, 2002

Block 4

X=1,493,033.33
X=377,611.20

NORTH 17,611.20'

X=1,495,367.00
Y=376,439.36

SOUTH 13,239.36'

POB X=1,493,033.33
Y=360,000.00

X=1,495,367.00
Y=360,000.00

X=1,495,367.00
Y=363,200.00

SOUTH 3,200.00'

SL 16980

SL 17327

WEST 2,333.67'

TRACT 34537 - PORTION OF BLOCK 16, EAST CAMERON AREA, REVISED, Cameron Parish, Louisiana

That portion of Block 16, East Cameron Area, Revised, Cameron Parish, Louisiana, belonging to the State of Louisiana and not under mineral lease on July 10, 2002, described as follows: Beginning at a point on the North line of Block 16, East Cameron Area, Revised, having Coordinates of X = 1,531,653.17 and Y = 345,241.95; thence South 7,776.61 feet to a point having Coordinates of X = 1,531,653.17 and Y = 337,465.34; thence Northwesterly on an arc having a radius of 18,240.60 feet and a center at X = 1,539,270 and Y = 354,040 to a point having Coordinates of X = 1,530,263 and Y = 338,178; thence Northwesterly on a straight line to a point having Coordinates of X = 1,527,498 and Y = 339,748; thence Northwesterly on an arc having a radius of 18,240.60 feet and a center at X = 1,536,505 and Y = 355,610 to a point having Coordinates of X = 1,526,511 and Y = 340,351; thence Northwesterly on a straight line to a point having Coordinates of X = 1,526,495 and Y = 340,356; thence Northwesterly on an arc having a radius of 18,240.60 feet and a center at X = 1,532,515 and Y = 357,575 to a point on the West line of said Block 16 having Coordinates of X = 1,524,274.14 and Y = 341,302.08; thence North 3,939.87 feet along the West line of said Block 16 to its Northwest corner having Coordinates of X = 1,524,274.14 and Y = 345,241.95; thence East 7,379.03 feet to the point of beginning, containing approximately **981.86 acres**, as shown outlined on a plat on file in the Office of Mineral Resources, Department of Natural Resources, as provided by the applicant, **LESS AND EXCEPT** that portion thereof, if any, which is more than three nautical miles from the coast line as determined by the Report of the Special Master in the litigation in the Supreme Court of the United States styled United States v. State of Louisiana et al No. 9 Original, said three mile line as set out in the June, 1975, decree of the Supreme Court. All bearings, distances and coordinates are based on Louisiana Coordinate System of 1927 (South Zone).

NOTE: The above description of the tract nominated for lease has been provided exclusively by the party nominating the tract for lease.

Maps depicting the nominated tract, containing the bearings, distances and coordinates of the nominated tract based on the Louisiana Coordinate System of 1927, North or South Zone, as applicable, are available for public inspection and review at the offices of the Louisiana State Mineral Board from 10:00 a.m. to 3:00 p.m. Monday - Friday.

Any mineral lease selected from the nominated tract and awarded by the Louisiana State Mineral Board shall be without warranty of any kind, either express, implied, or statutory, including, but not limited to, the implied warranties or merchantability and fitness for a particular purpose. Should the mineral lease awarded by the Louisiana State Mineral Board be subsequently modified, cancelled or abrogated due to the

existence of conflicting leases, operating agreements, private claims or other existing or future obligations or conditions which may affect all or any portion of the leased tract, it shall not relieve the Lessee of the obligation to pay any bonus due thereon to the Louisiana State Mineral Board, nor shall the Louisiana State Mineral Board be obligated to refund any consideration paid by the Lessee prior to such modification, cancellation, or abrogation, including, but not limited to, bonuses, rents and royalties.

NOTE: The State of Louisiana does hereby reserve, and this lease shall be subject to, the imprescriptible right of surface use in the nature of a servitude in favor of the Department of Natural Resources and/or the Louisiana Department of Wildlife and Fisheries, including its Offices and Commissions, for the sole purpose of implementing, constructing, servicing and maintaining approved coastal zone management and/or restoration projects. Utilization of any and all rights derived under this lease by the mineral lessee, its agents, successors or assigns, shall not interfere with nor hinder the reasonable surface use by the Department of Natural Resources and/or the Louisiana Department of Wildlife and Fisheries, its Offices or Commissions, as hereinabove reserved.

Applicant: Harold J. Anderson, Inc.

Blk. 8

Blk. 7

16

P. O. B.
X=1,531,653.17
Y= 345,241.95

TR 34537
981.86 ± ACS.
JULY, 2002

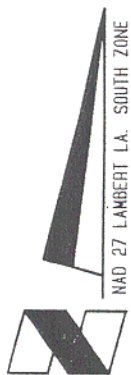
Blk. 15

LA
US

Blk. 16

EAST CAMERON AREA, REVISED

GULF OF MEXICO



Cameron Parish, Louisiana



Scale in Feet

TRACT 34538 - PORTION OF BLOCK 7, EAST CAMERON AREA, REVISED, Cameron Parish, Louisiana

That portion of Block 7, East Cameron Area, Revised, Cameron Parish, Louisiana, belonging to the State of Louisiana and not under mineral lease on July 10, 2002, described as follows: Beginning at a point on the East line of Block 7, East Cameron Area, Revised, having Coordinates of X = 1,539,032.191 and Y = 351,670.697; said point being the point of beginning; thence West a distance of 7,379.023 feet to a point having Coordinates of X = 1,531,653.168 and Y = 351,670.697; thence North a distance of 6428.745 feet to a point on the Shoreline, of the June, 1975, Decree of the Supreme Court having Coordinates of X = 1,531,653.168 and Y = 358,099.443; thence South 77 degrees 38 minutes 15 seconds East along said Shoreline a distance of 324.353 feet, to a point having Coordinates of X = 1,531,970.000 and Y = 358,030.000; thence South 50 degrees 08 minutes 34 seconds East along said Shoreline a distance of 709.965 feet to a point having Coordinates of X = 1,532,515.000 and Y = 357,575.000; thence South 70 degree 43 minutes 48 seconds East along said Shoreline a distance of 3,363.439 feet to a point having Coordinates of X = 1,535,690.000 and Y = 356,465.000; thence South 55 degrees 15 minutes 04 seconds East along said Shoreline a distance of 675.463 feet to a point having Coordinates of X = 1,536,245.000 and Y = 356,080.000; thence South 28 degrees 57 minutes 04 seconds East along said Shoreline a distance of 537.122 feet to a point having Coordinates of X = 1,536,505.000 and Y = 355,610.000; thence South 60 degrees 26 minutes 34 seconds East along said Shoreline a distance of 2,905.275 feet to a point at the Northeast corner of said Block 7 having Coordinates X = 1,539,032.192 and Y = 354,176.849; thence South along the East line of Block 7 a distance of 2,506.152 feet to the point of beginning, containing approximately **783.64 acres**, as shown outlined on a plat on file in the Office of Mineral Resources, Department of Natural Resources, as provided by the applicant. All bearings, distances and coordinates are based on Louisiana Coordinate System of 1927 (South Zone).

NOTE: The above description of the tract nominated for lease has been provided exclusively by the party nominating the tract for lease.

Maps depicting the nominated tract, containing the bearings, distances and coordinates of the nominated tract based on the Louisiana Coordinate System of 1927, North or South Zone, as applicable, are available for public inspection and review at the offices of the Louisiana State Mineral Board from 10:00 a.m. to 3:00 p.m. Monday - Friday.

Any mineral lease selected from the nominated tract and awarded by the Louisiana State Mineral Board shall be without warranty of any kind, either express, implied, or statutory, including, but not limited to, the implied warranties or merchantability and fitness for a particular purpose. Should the mineral lease awarded by the Louisiana State Mineral

Board be subsequently modified, cancelled or abrogated due to the existence of conflicting leases, operating agreements, private claims or other existing or future obligations or conditions which may affect all or any portion of the leased tract, it shall not relieve the Lessee of the obligation to pay any bonus due thereon to the Louisiana State Mineral Board, nor shall the Louisiana State Mineral Board be obligated to refund any consideration paid by the Lessee prior to such modification, cancellation, or abrogation, including, but not limited to, bonuses, rents and royalties.

NOTE: The State of Louisiana does hereby reserve, and this lease shall be subject to, the imprescriptible right of surface use in the nature of a servitude in favor of the Department of Natural Resources and/or the Louisiana Department of Wildlife and Fisheries, including its Offices and Commissions, for the sole purpose of implementing, constructing, servicing and maintaining approved coastal zone management and/or restoration projects. Utilization of any and all rights derived under this lease by the mineral lessee, its agents, successors or assigns, shall not interfere with nor hinder the reasonable surface use by the Department of Natural Resources and/or the Louisiana Department of Wildlife and Fisheries, its Offices or Commissions, as hereinabove reserved.

Applicant: Louisiana Coastal Exploration, Inc.

SHORELINE OF THE
JUNE, 1975 DECREE OF THE
SUPREME COURT

(NAD 83)

(P.O.B.) A Y=412381.497 X=2819829.999

(NAD 27)

(P.O.B.) A Y=351670.697 X=1539032.191

B Y=351670.697 X=1531653.168

C Y=358099.443 X=1531653.168

D Y=358030.000 X=1531970.000

E Y=357575.000 X=1532515.000

F Y=356465.000 X=1535690.000

G Y=356080.000 X=1536245.000

H Y=355610.000 X=1536505.000

I Y=354176.849 X=1539032.192

COURSES:

A-B WEST-7379.023'

B-C NORTH-6428.745'

C-D S77°38'15"E-324.353'

D-E S50°08'34"E-709.965'

E-F S70°43'48"E-3363.439'

F-G S55°15'04"E-675.463'

G-H S28°57'04"E-537.122'

H-I S60°26'34"E-2905.275'

I-A SOUTH-2506.152'

TR 34538
783.64 ± ACS.
JULY, 2002

EAST CAMERON AREA, REVISED
BLOCK 7

GULF OF MEXICO

GRAPHIC SCALE

0 2000' 4000' 8000'

NOTE: UNLESS OTHERWISE NOTED
COORDINATES ARE BASED ON NAD27.

NOTE:
NAD83 COORDINATES WERE CONVERTED
TO/FROM NAD27 COORDINATES USING THE
CORPSCON SOFTWARE FROM THE U.S.
ARMY TOPOGRAPHIC ENGINEERING CENTER.

REVISION

CAMERON PARISH, LOUISIANA

TRACT 34539 - PORTION OF BLOCK 7, EAST CAMERON AREA, REVISED, Cameron Parish, Louisiana

That portion of Block 7, East Cameron Area, Revised, Cameron Parish, Louisiana, belonging to the State of Louisiana and not under mineral lease on July 10, 2002, described as follows: Beginning at a point at the Southeast corner of Block 7, East Cameron Area, Revised, having Coordinates of X = 1,539,032.192 and Y = 345,241.952, said point being the point of beginning; thence West along the South line of said Block 7 a distance of 7,379.024 feet to a point having Coordinates of X = 1,531,653.168 and Y = 345,241.952; thence North a distance of 6,428.745 feet to a point having Coordinates of X = 1,531,653.168 and Y = 351,670.697; thence East a distance of 7,379.023 feet to a point on the East line of said Block 7 and having Coordinates of X = 1,539,032.191 and Y = 351,670.697; thence South along said East line of Block 7 a distance of 6,428.745 feet to the point of beginning, containing approximately **1,089.02 acres**, as shown outlined on a plat on file in the Office of Mineral Resources, Department of Natural Resources, as provided by the applicant. All bearings, distances and coordinates are based on Louisiana Coordinate System of 1927 (South Zone).

NOTE: The above description of the tract nominated for lease has been provided exclusively by the party nominating the tract for lease.

Maps depicting the nominated tract, containing the bearings, distances and coordinates of the nominated tract based on the Louisiana Coordinate System of 1927, North or South Zone, as applicable, are available for public inspection and review at the offices of the Louisiana State Mineral Board from 10:00 a.m. to 3:00 p.m. Monday - Friday.

Any mineral lease selected from the nominated tract and awarded by the Louisiana State Mineral Board shall be without warranty of any kind, either express, implied, or statutory, including, but not limited to, the implied warranties or merchantability and fitness for a particular purpose. Should the mineral lease awarded by the Louisiana State Mineral Board be subsequently modified, cancelled or abrogated due to the existence of conflicting leases, operating agreements, private claims or other existing or future obligations or conditions which may affect all or any portion of the leased tract, it shall not relieve the Lessee of the obligation to pay any bonus due thereon to the Louisiana State Mineral Board, nor shall the Louisiana State Mineral Board be obligated to refund any consideration paid by the Lessee prior to such modification, cancellation, or abrogation, including, but not limited to, bonuses, rents and royalties.

NOTE: The State of Louisiana does hereby reserve, and this lease shall be subject to, the imprescriptible right of surface use in the nature of a servitude in favor of the Department of Natural Resources and/or the

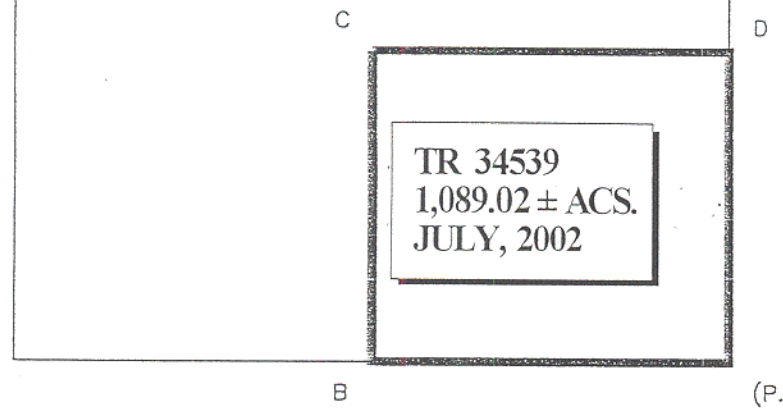
Louisiana Department of Wildlife and Fisheries, including its Offices and Commissions, for the sole purpose of implementing, constructing, servicing and maintaining approved coastal zone management and/or restoration projects. Utilization of any and all rights derived under this lease by the mineral lessee, its agents, successors or assigns, shall not interfere with nor hinder the reasonable surface use by the Department of Natural Resources and/or the Louisiana Department of Wildlife and Fisheries, its Offices or Commissions, as hereinabove reserved.

Applicant: Louisiana Coastal Exploration, Inc.

LOUISIANA COORDINATE SYSTEM
(1927 SOUTH ZONE)

SHORELINE OF THE
JUNE, 1975 DECREE OF THE
SUPREME COURT

EAST CAMERON AREA, REVISED



(NAD 83)
(P.O.B.) A Y=405952.747 X=2819829.903
(NAD 27)
(P.O.B.) A Y=345241.952 X=1539032.192
B Y=345241.952 X=1531653.168
C Y=351670.697 X=1531653.168
D Y=351670.697 X=1539032.191

COURSES:

A-B WEST-7379.024'
B-C NORTH-6428.745'
C-D EAST-7379.023'
D-A SOUTH-6428.745'

GULF OF MEXICO

GRAPHIC SCALE



NOTE: UNLESS OTHERWISE NOTED
COORDINATES ARE BASED ON NAD27.

NOTE:
NAD83 COORDINATES WERE CONVERTED
TO/FROM NAD27 COORDINATES USING THE
CORPSCON SOFTWARE FROM THE U.S.
ARMY TOPOGRAPHIC ENGINEERING CENTER.

REVISION

CAMERON PARISH, LOUISIANA

TRACT 34540 - PORTION OF BLOCK 16, EAST CAMERON AREA, REVISED, Cameron Parish, Louisiana

That portion of Block 16, East Cameron Area, Revised, Cameron Parish, Louisiana, belonging to the State of Louisiana and not under mineral lease on July 10, 2002, described as follows: Beginning at a point at the Northeast corner of Block 16, East Cameron Area, Revised, having Coordinates of X = 1,539,032.192 and Y = 345,241.952, said point being the point of beginning; thence South along the East line of said Block 16 a distance of 6,000.000 feet to a point having Coordinates of X = 1,539,032.192 and Y = 339,241.952; thence West a distance of 7,379.024 feet to a point having Coordinates of X = 1,531,653.172 and Y = 339,241.952; thence North a distance of 6,000.000 feet to a point on the North line of said Block 16 having Coordinates of X = 1,531,653.172 and Y = 345,241.952; thence East along said North line of Block 16 a distance of 7,379.024 feet to the point of beginning, containing approximately **1,016.39 acres**, as shown outlined on a plat on file in the Office of Mineral Resources, Department of Natural Resources, as provided by the applicant. All bearings, distances and coordinates are based on Louisiana Coordinate System of 1927 (South Zone).

NOTE: The above description of the tract nominated for lease has been provided exclusively by the party nominating the tract for lease.

Maps depicting the nominated tract, containing the bearings, distances and coordinates of the nominated tract based on the Louisiana Coordinate System of 1927, North or South Zone, as applicable, are available for public inspection and review at the offices of the Louisiana State Mineral Board from 10:00 a.m. to 3:00 p.m. Monday - Friday.

Any mineral lease selected from the nominated tract and awarded by the Louisiana State Mineral Board shall be without warranty of any kind, either express, implied, or statutory, including, but not limited to, the implied warranties or merchantability and fitness for a particular purpose. Should the mineral lease awarded by the Louisiana State Mineral Board be subsequently modified, cancelled or abrogated due to the existence of conflicting leases, operating agreements, private claims or other existing or future obligations or conditions which may affect all or any portion of the leased tract, it shall not relieve the Lessee of the obligation to pay any bonus due thereon to the Louisiana State Mineral Board, nor shall the Louisiana State Mineral Board be obligated to refund any consideration paid by the Lessee prior to such modification, cancellation, or abrogation, including, but not limited to, bonuses, rents and royalties.

NOTE: The State of Louisiana does hereby reserve, and this lease shall be subject to, the imprescriptible right of surface use in the nature of a servitude in favor of the Department of Natural Resources and/or the

Louisiana Department of Wildlife and Fisheries, including its Offices and Commissions, for the sole purpose of implementing, constructing, servicing and maintaining approved coastal zone management and/or restoration projects. Utilization of any and all rights derived under this lease by the mineral lessee, its agents, successors or assigns, shall not interfere with nor hinder the reasonable surface use by the Department of Natural Resources and/or the Louisiana Department of Wildlife and Fisheries, its Offices or Commissions, as hereinabove reserved.

Applicant: Louisiana Coastal Exploration, Inc.

LOUISIANA COORDINATE SYSTEM
(1927 SOUTH ZONE)

TR 34540
1,016.39 ± ACS.
JULY, 2002

(NAD 83)

(P.O.B.) A Y=405952.747 X=2819829.903

(NAD 27)

(P.O.B.) A Y=345241.952 X=1539032.192

B Y=339241.952 X=1539032.192

C Y=339241.952 X=1531653.172

D Y=345241.952 X=1531653.172

COURSES:

A-B SOUTH-6000.000'

B-C WEST-7379.024'

C-D NORTH-6000.000'

D-A EAST-7379.024'

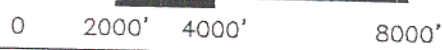
EAST CAMERON AREA, REVISED

BLOCK 16

3 MILE LINE
JUNE 1975 DECREE
OF THE SUPREME COURT

GULF OF MEXICO

GRAPHIC SCALE



NOTE: UNLESS OTHERWISE NOTED
COORDINATES ARE BASED ON NAD27.

NOTE:
NAD83 COORDINATES WERE CONVERTED
TO/FROM NAD27 COORDINATES USING THE
CORPSCON SOFTWARE FROM THE U.S.
ARMY TOPOGRAPHIC ENGINEERING CENTER.

NO.	DATE	REVISION
CAMERON PARISH, LOUISIANA		

TRACT 34541 - PORTION OF BLOCK 16, EAST CAMERON AREA, REVISED, Cameron Parish, Louisiana

That portion of Block 16, East Cameron Area, Revised, Cameron Parish, Louisiana, belonging to the State of Louisiana and not under mineral lease on July 10, 2002, described as follows: Beginning at a point on the East line of Block 16, East Cameron Area, Revised, having Coordinates of X = 1,539,032.19 and Y = 339,241.95; thence South 5,173.85 feet along the East line of said Block 16 to a point having Coordinates of X = 1,539,032.19 and Y = 334,068.10; thence Northwesterly on an arc having a radius of 18,240.60 feet and a center at X = 1,546,740 and Y = 350,600 to a point having Coordinates of X = 1,537,927 and Y = 334,630; thence Northwesterly on a straight line to a point having Coordinates of X = 1,531,757 and Y = 337,418; thence Northwesterly on an arc having a radius of 18,240.60 feet and a center at X = 1,539,270 and Y = 354,040 to a point having Coordinates of X = 1,531,653.17 and Y = 337,465.34; thence North 1,776.61 feet to point having Coordinates of X = 1,531,653.17 and Y = 339,241.95; thence East 7,379.02 feet to the point of beginning, containing approximately **584.43 acres**, as shown outlined on a plat on file in the Office of Mineral Resources, Department of Natural Resources, as provided by the applicant, **LESS AND EXCEPT** that portion thereof, if any, which is more than three nautical miles from the coast line as determined by the Report of the Special Master in the litigation in the Supreme Court of the United States styled United States v. State of Louisiana et al No. 9 Original, said three mile line as set out in the June, 1975, decree of the Supreme Court. All bearings, distances and coordinates are based on Louisiana Coordinate System of 1927 (South Zone).

NOTE: The above description of the tract nominated for lease has been provided exclusively by the party nominating the tract for lease.

Maps depicting the nominated tract, containing the bearings, distances and coordinates of the nominated tract based on the Louisiana Coordinate System of 1927, North or South Zone, as applicable, are available for public inspection and review at the offices of the Louisiana State Mineral Board from 10:00 a.m. to 3:00 p.m. Monday - Friday.

Any mineral lease selected from the nominated tract and awarded by the Louisiana State Mineral Board shall be without warranty of any kind, either express, implied, or statutory, including, but not limited to, the implied warranties or merchantability and fitness for a particular purpose. Should the mineral lease awarded by the Louisiana State Mineral Board be subsequently modified, cancelled or abrogated due to the existence of conflicting leases, operating agreements, private claims or other existing or future obligations or conditions which may affect all or any portion of the leased tract, it shall not relieve the Lessee of the obligation to pay any bonus due thereon to the Louisiana State Mineral Board, nor shall the Louisiana State Mineral Board be obligated to refund

any consideration paid by the Lessee prior to such modification, cancellation, or abrogation, including, but not limited to, bonuses, rents and royalties.

NOTE: The State of Louisiana does hereby reserve, and this lease shall be subject to, the imprescriptible right of surface use in the nature of a servitude in favor of the Department of Natural Resources and/or the Louisiana Department of Wildlife and Fisheries, including its Offices and Commissions, for the sole purpose of implementing, constructing, servicing and maintaining approved coastal zone management and/or restoration projects. Utilization of any and all rights derived under this lease by the mineral lessee, its agents, successors or assigns, shall not interfere with nor hinder the reasonable surface use by the Department of Natural Resources and/or the Louisiana Department of Wildlife and Fisheries, its Offices or Commissions, as hereinabove reserved.

Applicant: Harold J. Anderson, Inc.

28

Bik. 7

SL15592

Bik. 16

P.O.B.
X=1,539,032.19
Y= 339,241.95

Bik. 17

TR 34541
584.43 ± ACS.
JULY, 2002

LA
US

EAST CAMERON AREA, REVISED

GULF OF MEXICO



Cameron Parish, Louisiana

2000 0 2000

Scale in Feet

TRACT 34542 - PORTION OF BLOCK 6, EAST CAMERON AREA, REVISED, Cameron Parish, Louisiana

That portion of Block 6, East Cameron Area, Revised, Cameron Parish, Louisiana, belonging to the State of Louisiana and not under mineral lease on July 10, 2002, described as follows: Beginning at a point at the Southwest corner of Block 6, East Cameron Area, Revised, having Coordinates of X = 1,539,032.192 and Y = 345,241.952, said point being the point of beginning; thence North along the West line of said Block 6 a distance of 8,934.897 feet to a point at the Northwest corner of said Block 6 on the Shoreline of the June, 1975, Decree of the Supreme Court having Coordinates of X = 1,539,032.192 and Y = 354,176.849; thence South 60 degrees 04 minutes 53 seconds East along said Shoreline a distance of 274.372 feet to a point having Coordinates of X = 1,539,270.000 and Y = 354,040.000; thence South 65 degrees 40 minutes 40 seconds East along said Shoreline a distance of 7,599.508 feet to a point having Coordinates of X = 1,546,195.000 and Y = 350,910.000; thence South 60 degrees 22 minutes 07 seconds East along said Shoreline a distance of 248.745 to a point having Coordinates of X = 1,546,411.216 and Y = 350,787.016; thence South a distance 5,545.064 to a point on the South line of said Block 6 and having Coordinates of X = 1,546,411.216 and Y = 345,241.952; thence West along the South line of said Block 6 a distance of 7,379.024 feet to the point of beginning, containing approximately **1,226.12 acres**, as shown outlined on a plat on file in the Office of Mineral Resources, Department of Natural Resources, as provided by the applicant. All bearings, distances and coordinates are based on Louisiana Coordinate System of 1927 (South Zone).

NOTE: The above description of the tract nominated for lease has been provided exclusively by the party nominating the tract for lease.

Maps depicting the nominated tract, containing the bearings, distances and coordinates of the nominated tract based on the Louisiana Coordinate System of 1927, North or South Zone, as applicable, are available for public inspection and review at the offices of the Louisiana State Mineral Board from 10:00 a.m. to 3:00 p.m. Monday - Friday.

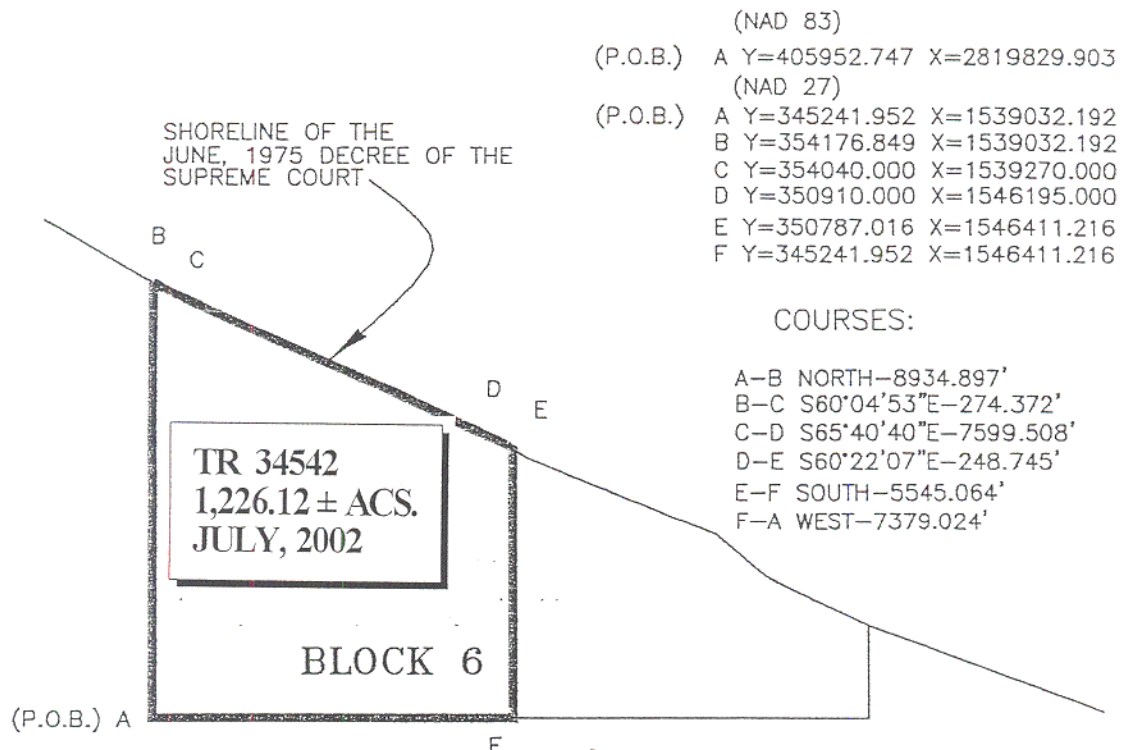
Any mineral lease selected from the nominated tract and awarded by the Louisiana State Mineral Board shall be without warranty of any kind, either express, implied, or statutory, including, but not limited to, the implied warranties or merchantability and fitness for a particular purpose. Should the mineral lease awarded by the Louisiana State Mineral Board be subsequently modified, cancelled or abrogated due to the existence of conflicting leases, operating agreements, private claims or other existing or future obligations or conditions which may affect all or any portion of the leased tract, it shall not relieve the Lessee of the obligation to pay any bonus due thereon to the Louisiana State Mineral Board, nor shall the Louisiana State Mineral Board be obligated to refund

any consideration paid by the Lessee prior to such modification, cancellation, or abrogation, including, but not limited to, bonuses, rents and royalties.

NOTE: The State of Louisiana does hereby reserve, and this lease shall be subject to, the imprescriptible right of surface use in the nature of a servitude in favor of the Department of Natural Resources and/or the Louisiana Department of Wildlife and Fisheries, including its Offices and Commissions, for the sole purpose of implementing, constructing, servicing and maintaining approved coastal zone management and/or restoration projects. Utilization of any and all rights derived under this lease by the mineral lessee, its agents, successors or assigns, shall not interfere with nor hinder the reasonable surface use by the Department of Natural Resources and/or the Louisiana Department of Wildlife and Fisheries, its Offices or Commissions, as hereinabove reserved.

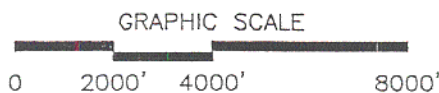
Applicant: Louisiana Coastal Exploration, Inc.

LOUISIANA COORDINATE SYSTEM
(1927 SOUTH ZONE)



EAST CAMERON AREA, REVISED
GULF OF MEXICO

NOTE: UNLESS OTHERWISE NOTED
COORDINATES ARE BASED ON NAD27.



NOTE:
NAD83 COORDINATES WERE CONVERTED
TO/FROM NAD27 COORDINATES USING THE
CORPSCON SOFTWARE FROM THE U.S.
ARMY TOPOGRAPHIC ENGINEERING CENTER.

REVISION

CAMERON PARISH, LOUISIANA

TRACT 34543 - PORTION OF BLOCK 17, EAST CAMERON AREA, REVISED, Cameron Parish, Louisiana

That portion of Block 17, East Cameron Area, Revised, Cameron Parish, Louisiana, belonging to the State of Louisiana and not under mineral lease on July 10, 2002, described as follows: Beginning at a point at the Northwest corner of Block 17, East Cameron Area, Revised, having Coordinates of X = 1,539,032.192 and Y = 345,241.952, said point being the point of beginning; thence South 65 degrees 50 minutes 28 seconds East a distance of 8,678.254 feet to a point having Coordinates of X = 1,546,950.354 and Y = 341,690.218; thence South 27 degrees 23 minutes 07 seconds West along the Northwesterly line of Operating Agreement "RRRRRR" a distance of 2,757.263 feet to a point having Coordinates of X = 1,545,682.091 and Y = 339,241.952; thence West a distance of 6,649.899 feet to a point on the West line of said Block 17 having Coordinates of X = 1,539,032.192 and Y = 339,241.952; thence North along said West line of Block 17 a distance of 6,000.000 feet to the point of beginning, containing approximately **732.20 acres**, as shown outlined on a plat on file in the Office of Mineral Resources, Department of Natural Resources, as provided by the applicant. All bearings, distances and coordinates are based on Louisiana Coordinate System of 1927 (South Zone).

NOTE: The above description of the tract nominated for lease has been provided exclusively by the party nominating the tract for lease.

Maps depicting the nominated tract, containing the bearings, distances and coordinates of the nominated tract based on the Louisiana Coordinate System of 1927, North or South Zone, as applicable, are available for public inspection and review at the offices of the Louisiana State Mineral Board from 10:00 a.m. to 3:00 p.m. Monday - Friday.

Any mineral lease selected from the nominated tract and awarded by the Louisiana State Mineral Board shall be without warranty of any kind, either express, implied, or statutory, including, but not limited to, the implied warranties or merchantability and fitness for a particular purpose. Should the mineral lease awarded by the Louisiana State Mineral Board be subsequently modified, cancelled or abrogated due to the existence of conflicting leases, operating agreements, private claims or other existing or future obligations or conditions which may affect all or any portion of the leased tract, it shall not relieve the Lessee of the obligation to pay any bonus due thereon to the Louisiana State Mineral Board, nor shall the Louisiana State Mineral Board be obligated to refund any consideration paid by the Lessee prior to such modification, cancellation, or abrogation, including, but not limited to, bonuses, rents and royalties.

NOTE: The State of Louisiana does hereby reserve, and this lease shall be subject to, the imprescriptible right of surface use in the nature of a servitude in favor of the Department of Natural Resources and/or the

Louisiana Department of Wildlife and Fisheries, including its Offices and Commissions, for the sole purpose of implementing, constructing, servicing and maintaining approved coastal zone management and/or restoration projects. Utilization of any and all rights derived under this lease by the mineral lessee, its agents, successors or assigns, shall not interfere with nor hinder the reasonable surface use by the Department of Natural Resources and/or the Louisiana Department of Wildlife and Fisheries, its Offices or Commissions, as hereinabove reserved.

Applicant: Louisiana Coastal Exploration, Inc.

(NAD 83)

(P.O.B.) A Y=405952.747 X=2819829.903

(NAD 27)

(P.O.B.) A Y=345241.952 X=1539032.192

B Y=341690.218 X=1546950.354

C Y=339241.952 X=1545682.091

D Y=339241.952 X=1539032.192

TR 34543
732.20 ± ACS.
JULY, 2002

COURSES:

A-B S65°50'28"E-8678.254'

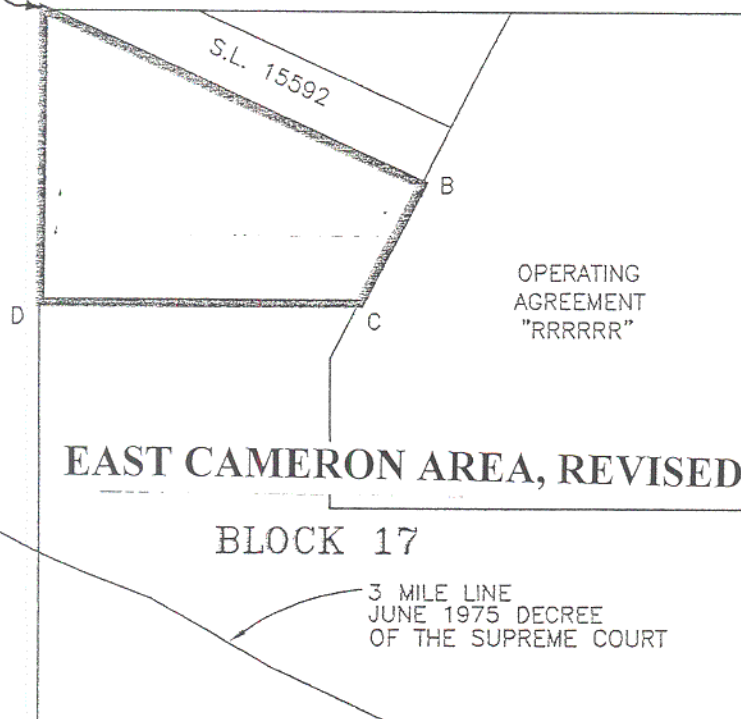
B-C S27°23'07"W-2757.263'

C-D WEST-6649.899'

D-A NORTH-6000.000'

LOUISIANA COORDINATE SYSTEM
(1927 SOUTH ZONE)

(P.O.B.) A



EAST CAMERON AREA, REVISED

BLOCK 17

3 MILE LINE
JUNE 1975 DECREE
OF THE SUPREME COURT

GULF OF MEXICO

GRAPHIC SCALE

0 2000' 4000' 8000'

NOTE: UNLESS OTHERWISE NOTED
COORDINATES ARE BASED ON NAD27.

NOTE:
NAD83 COORDINATES WERE CONVERTED
TO/FROM NAD27 COORDINATES USING THE
CORPSCON SOFTWARE FROM THE U.S.
ARMY TOPOGRAPHIC ENGINEERING CENTER.

NO.	DATE	REVISION

CAMERON PARISH, LOUISIANA

TRACT 34544 - PORTION OF BLOCK 17, EAST CAMERON AREA, REVISED, Cameron Parish, Louisiana

That portion of Block 17, East Cameron Area, Revised, Cameron Parish, Louisiana, belonging to the State of Louisiana and not under mineral lease on July 10, 2002, described as follows: Beginning at a point on the West line of Block 17, East Cameron Area, Revised, having Coordinates of X = 1,539,032.19 and Y = 339,241.95; thence East 6,649.90 feet to a point on the Western boundary of A0148 having Coordinates of X = 1,545,682.09 and Y = 339,241.95; thence along the boundary of said A0148 the following courses: South 27 degrees 23 minutes 07 seconds West 1,304.21 feet and South 3,100.00 feet to its Southwest corner, also being a point on the North line of State Lease No. 17185 having Coordinates of X = 1,545,082.19 and Y = 334,983.90; thence West 1,367.32 feet along the North line of said State Lease No. 17185 to its Northwest corner having Coordinates of X = 1,543,714.87 and Y = 334,983.90; thence South 3,228.29 feet along the West line of said State Lease No. 17185 to its most Westerly Southwest corner having Coordinates of X = 1,543,714.87 and Y = 331,755.61; thence Northwesterly on an arc having a radius of 18,240.60 feet and a center at X = 1,546,740 and Y = 350,600 to a point having Coordinates of X = 1,541,402 and Y = 333,094; thence Northwesterly on a straight line to a point having Coordinates of X = 1,540,011 and Y = 333,646; thence Northwesterly on an arc having a radius of 18,240.60 feet and a center at X = 1,551,670 and Y = 348,170 to a point on the West line of said Block 17 having Coordinates of X = 1,539,032.19 and Y = 334,068.10; thence North 5,173.85 feet along the West line of said Block 17 to the point of beginning, containing approximately **814.24 acres**, as shown outlined on a plat on file in the Office of Mineral Resources, Department of Natural Resources, as provided by the applicant, **LESS AND EXCEPT** that portion thereof, if any, which is more than three nautical miles from the coast line as determined by the Report of the Special Master in the litigation in the Supreme Court of the United States styled United States v. State of Louisiana et al No. 9 Original, said three mile line as set out in the June, 1975, decree of the Supreme Court. All bearings, distances and coordinates are based on Louisiana Coordinate System of 1927 (South Zone).

NOTE: The above description of the tract nominated for lease has been provided exclusively by the party nominating the tract for lease.

Maps depicting the nominated tract, containing the bearings, distances and coordinates of the nominated tract based on the Louisiana Coordinate System of 1927, North or South Zone, as applicable, are available for public inspection and review at the offices of the Louisiana State Mineral Board from 10:00 a.m. to 3:00 p.m. Monday - Friday.

Any mineral lease selected from the nominated tract and awarded by the Louisiana State Mineral Board shall be without warranty of any kind, either express, implied, or statutory, including, but not limited to, the

implied warranties or merchantability and fitness for a particular purpose. Should the mineral lease awarded by the Louisiana State Mineral Board be subsequently modified, cancelled or abrogated due to the existence of conflicting leases, operating agreements, private claims or other existing or future obligations or conditions which may affect all or any portion of the leased tract, it shall not relieve the Lessee of the obligation to pay any bonus due thereon to the Louisiana State Mineral Board, nor shall the Louisiana State Mineral Board be obligated to refund any consideration paid by the Lessee prior to such modification, cancellation, or abrogation, including, but not limited to, bonuses, rents and royalties.

NOTE: The State of Louisiana does hereby reserve, and this lease shall be subject to, the imprescriptible right of surface use in the nature of a servitude in favor of the Department of Natural Resources and/or the Louisiana Department of Wildlife and Fisheries, including its Offices and Commissions, for the sole purpose of implementing, constructing, servicing and maintaining approved coastal zone management and/or restoration projects. Utilization of any and all rights derived under this lease by the mineral lessee, its agents, successors or assigns, shall not interfere with nor hinder the reasonable surface use by the Department of Natural Resources and/or the Louisiana Department of Wildlife and Fisheries, its Offices or Commissions, as hereinabove reserved.

Applicant: Harold J. Anderson, Inc.

Bik. 7

Bik. 6

SL15592

Bik. 16

P. O. B.
X=1,539,032.19
Y= 339,241.95

Bik. 17

A0148

TR 34544
814.24 ± ACS.
JULY, 2002

A0200

LA
US

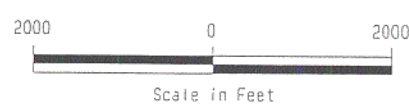
SL 17185

EAST CAMERON AREA, REVISED

GULF OF MEXICO



Cameron Parish, Louisiana



TRACT 34545 - PORTION OF BLOCK 6, EAST CAMERON AREA, REVISED, Cameron Parish, Louisiana

That portion of Block 6, East Cameron Area, Revised, Cameron Parish, Louisiana, belonging to the State of Louisiana and not under mineral lease on July 10, 2002, described as follows: Beginning at a point at the Southeast corner of Block 6, East Cameron Area, Revised, having Coordinates of X = 1,553,790.240 and Y = 345,241.952, said point being the point of beginning; thence West along the South line of said Block 6 a distance of 7,379.024 feet to a point having Coordinates of X = 1,546,411.216 and Y = 345,241.952; thence North a distance of 5,545.064 feet to a point on the Shoreline of the June, 1975, Decree of the Supreme Court having Coordinates of X = 1,546,411.216 and Y = 350,787.016; thence South 60 degrees 22 minutes 06 seconds East along said Shoreline a distance of 378.252 feet to a point having Coordinates of X = 1,546,740.000 and Y = 350,600.000; thence South 68 degrees 21 minutes 02 seconds East along said Shoreline a distance of 4,201.372 feet to a point having Coordinates of X = 1,550,645.000 and Y = 349,050.000; thence South 49 degrees 21 minutes 10 seconds East along said Shoreline a distance of 1,350.935 to a point at the Northeast corner of said Block 6 having Coordinates of X = 1,551,670.000 and Y = 348,170.000; thence South along the East line of said Block 6 a distance 1,931.438 feet to the point of beginning, containing approximately **649.52 acres**, as shown outlined on a plat on file in the Office of Mineral Resources, Department of Natural Resources, as provided by the applicant. All bearings, distances and coordinates are based on Louisiana Coordinate System of 1927 (South Zone).

NOTE: The above description of the tract nominated for lease has been provided exclusively by the party nominating the tract for lease.

Maps depicting the nominated tract, containing the bearings, distances and coordinates of the nominated tract based on the Louisiana Coordinate System of 1927, North or South Zone, as applicable, are available for public inspection and review at the offices of the Louisiana State Mineral Board from 10:00 a.m. to 3:00 p.m. Monday - Friday.

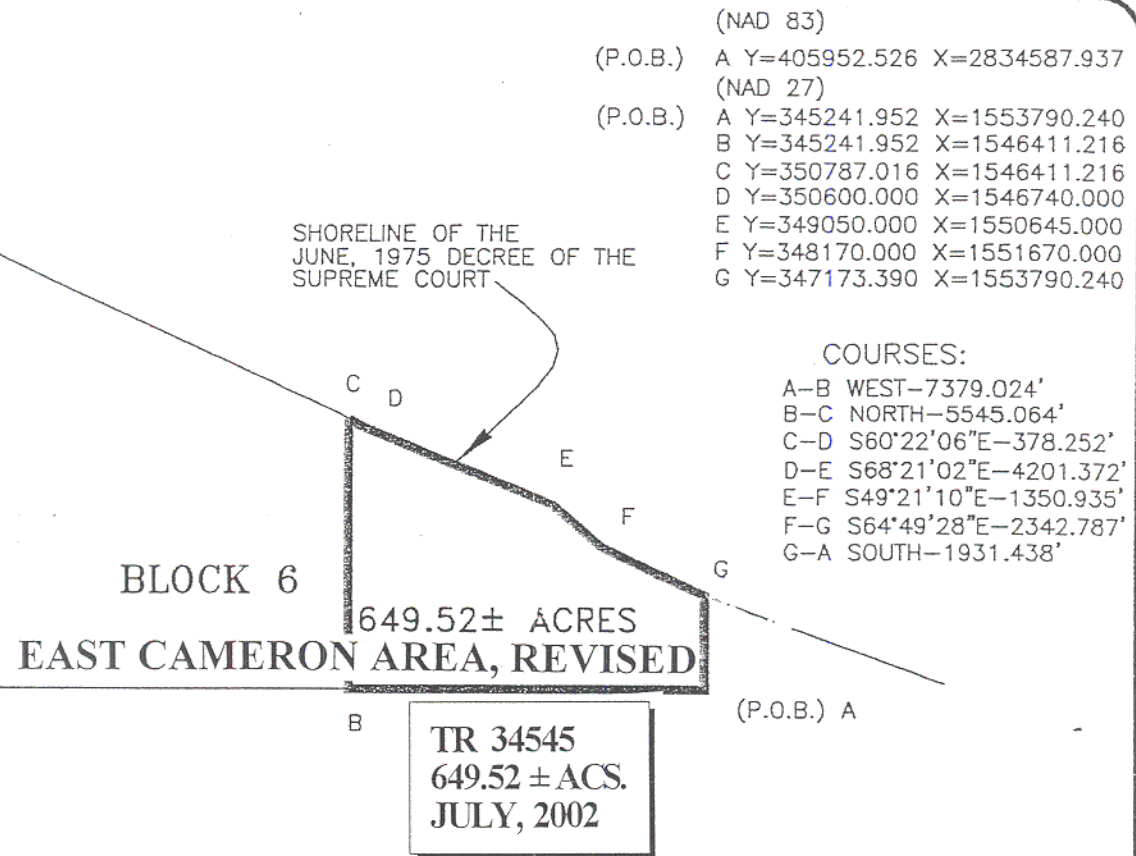
Any mineral lease selected from the nominated tract and awarded by the Louisiana State Mineral Board shall be without warranty of any kind, either express, implied, or statutory, including, but not limited to, the implied warranties or merchantability and fitness for a particular purpose. Should the mineral lease awarded by the Louisiana State Mineral Board be subsequently modified, cancelled or abrogated due to the existence of conflicting leases, operating agreements, private claims or other existing or future obligations or conditions which may affect all or any portion of the leased tract, it shall not relieve the Lessee of the obligation to pay any bonus due thereon to the Louisiana State Mineral Board, nor shall the Louisiana State Mineral Board be obligated to refund any consideration paid by the Lessee prior to such modification,

cancellation, or abrogation, including, but not limited to, bonuses, rents and royalties.

NOTE: The State of Louisiana does hereby reserve, and this lease shall be subject to, the imprescriptible right of surface use in the nature of a servitude in favor of the Department of Natural Resources and/or the Louisiana Department of Wildlife and Fisheries, including its Offices and Commissions, for the sole purpose of implementing, constructing, servicing and maintaining approved coastal zone management and/or restoration projects. Utilization of any and all rights derived under this lease by the mineral lessee, its agents, successors or assigns, shall not interfere with nor hinder the reasonable surface use by the Department of Natural Resources and/or the Louisiana Department of Wildlife and Fisheries, its Offices or Commissions, as hereinabove reserved.

Applicant: Louisiana Coastal Exploration, Inc.

LOUISIANA COORDINATE SYSTEM
(1927 SOUTH ZONE)



NOTE: UNLESS OTHERWISE NOTED
COORDINATES ARE BASED ON NAD27.

REVISION

CAMERON PARISH, LOUISIANA

TRACT 34546 - PORTION OF BLOCK 18, EAST CAMERON AREA, REVISED, Cameron Parish, Louisiana

That portion of Block 18, East Cameron Area, Revised, Cameron Parish, Louisiana, belonging to the State of Louisiana and not under mineral lease on July 10, 2002, described as follows: Beginning at a point at the Southwest corner of Block 18, East Cameron Area, Revised having Coordinates of X = 1,553,790.240 and Y = 330,483.904, said point being the point of beginning; thence North along the West line of said Block 18 a distance of 7,379.024 feet to a point having Coordinates of X = 1,553,790.24000 and Y = 337,862.928; thence East a distance of 7,379.024 feet to point having Coordinates of X = 1,561,169.264 and Y = 337,862.928; thence South a distance of 7,379.024 feet to a point on the South line of said Block 18 having Coordinates of X = 1,561,169.264 and Y = 330,483.904; thence West along the South line of said Block 18 a distance of 7,379.024 feet to the point of beginning, containing approximately **1,250.00 acres**, as shown outlined on a plat on file in the Office of Mineral Resources, Department of Natural Resources, as provided by the applicant. All bearings, distances and coordinates are based on Louisiana Coordinate System of 1927 (South Zone).

NOTE: The above description of the tract nominated for lease has been provided exclusively by the party nominating the tract for lease.

Maps depicting the nominated tract, containing the bearings, distances and coordinates of the nominated tract based on the Louisiana Coordinate System of 1927, North or South Zone, as applicable, are available for public inspection and review at the offices of the Louisiana State Mineral Board from 10:00 a.m. to 3:00 p.m. Monday - Friday.

Any mineral lease selected from the nominated tract and awarded by the Louisiana State Mineral Board shall be without warranty of any kind, either express, implied, or statutory, including, but not limited to, the implied warranties or merchantability and fitness for a particular purpose. Should the mineral lease awarded by the Louisiana State Mineral Board be subsequently modified, cancelled or abrogated due to the existence of conflicting leases, operating agreements, private claims or other existing or future obligations or conditions which may affect all or any portion of the leased tract, it shall not relieve the Lessee of the obligation to pay any bonus due thereon to the Louisiana State Mineral Board, nor shall the Louisiana State Mineral Board be obligated to refund any consideration paid by the Lessee prior to such modification, cancellation, or abrogation, including, but not limited to, bonuses, rents and royalties.

NOTE: The State of Louisiana does hereby reserve, and this lease shall be subject to, the imprescriptible right of surface use in the nature of a servitude in favor of the Department of Natural Resources and/or the

Louisiana Department of Wildlife and Fisheries, including its Offices and Commissions, for the sole purpose of implementing, constructing, servicing and maintaining approved coastal zone management and/or restoration projects. Utilization of any and all rights derived under this lease by the mineral lessee, its agents, successors or assigns, shall not interfere with nor hinder the reasonable surface use by the Department of Natural Resources and/or the Louisiana Department of Wildlife and Fisheries, its Offices or Commissions, as hereinabove reserved.

Applicant: Louisiana Coastal Exploration, Inc.

SHORELINE OF THE
JUNE, 1975 DECREE OF THE
SUPREME COURT.

(NAD 83)

(P.O.B.) A Y=391194.450 X=2834587.713

(NAD 27)

(P.O.B.) A Y=330483.904 X=1553790.240

B Y=337862.928 X=1553790.240

C Y=337862.928 X=1561169.264

D $Y=330483.904$ $X=1561169.264$

COURSES:

A-B NORTH-7379.024'

B-C EAST-7379.024'

C-D SOUTH-7379.024'

D-A WEST-7379.024'

EAST CAMERON AREA, REVISED
BLOCK 18

TR 34546
1,250.00 ± ACS.
JULY, 2002

(P.O.B.) A ↗

GULF OF MEXICO

GRAPHIC SCALE

NOTE: UNLESS OTHERWISE NOTED
COORDINATES ARE BASED ON NAD27.

0 2000' 4000' 8000'

NOTE:
NAD83 COORDINATES WERE CONVERTED
TO/FROM NAD27 COORDINATES USING THE
CORPSON SOFTWARE FROM THE U.S.
ARMY TOPOGRAPHIC ENGINEERING CENTER.

NO.	DATE
-----	------

REVISION

CAMERON PARISH, LOUISIANA

TRACT 34547 - PORTION OF BLOCK 22, EAST CAMERON AREA, REVISED, Cameron Parish, Louisiana

That portion of Block 22, East Cameron Area, Revised, Cameron Parish, Louisiana, belonging to the State of Louisiana and not under mineral lease on July 10, 2002, described as follows: Beginning at a point at the Northwest corner of Block 22, East Cameron Area, Revised, having Coordinates of X = 1,553,790.240 and Y = 330,483.904, said point being the point of beginning; thence East along the North line of said Block 22 a distance of 7,379.024 feet to a point having Coordinates of X = 1,561,169.264 and Y = 330,483.904; thence South a distance of 5,527.443 feet to point on the 3 mile line, June, 1975, Decree of the Supreme Court having Coordinates of X = 1,561,169.264 and Y = 324,956.461; thence North 68 degrees 41 minutes 47 seconds West along the said 3 mile line a distance of 103.324 feet to a point having Coordinates of X = 1,561,073.000 and Y = 324,994.000; thence along said 3 mile along a curve to the right having a radius of 18,240.600 feet, a length of 2,421.107 feet and a radius point having Coordinates of X = 1,567,696.024 and Y = 341,989.736 to a point on the said 3 mile line having Coordinates of X = 1,558,882.000 and Y = 326,020.000; thence North 71 degrees 33 minutes 54 seconds West along said 3 mile line a distance of 3.162 feet to a point having Coordinates of X = 1,558,879.000 and Y = 326,021.000; thence along said 3 mile line along a curve to the right having a radius of 18,240.600 feet, a length of 2,851.576 feet and radius point having Coordinates of X = 1,564,159.067 and Y = 343,480.679 to a point on the said 3 mile line having Coordinates of X = 1,556,225.000 and Y = 327,056.000; thence North 64 degrees 09 minutes 37 seconds West along said 3 mile line a distance of 176.664 feet to a point having Coordinates of X = 1,556,066.000 and Y = 327,133.000; thence North 73 degrees 24 minutes 50 seconds West along the said 3 mile line a distance of 2,374.560 feet to a point on the West line of said Block 22 and having Coordinates of X = 1,553,790.24 and Y = 327,810.830; thence North along the West line of said Block 22 a distance of 2,673.074 feet to the point of beginning, containing approximately **676.84 acres**, as shown outlined on a plat on file in the Office of Mineral Resources, Department of Natural Resources, as provided by the applicant, **LESS AND EXCEPT** that portion thereof, if any, which is more than three nautical miles from the coast line as determined by the Report of the Special Master in the litigation in the Supreme Court of the United States styled United States v. State of Louisiana et al No. 9 Original, said three mile line as set out in the June, 1975, decree of the Supreme Court. All bearings, distances and coordinates are based on Louisiana Coordinate System of 1927 (South Zone).

NOTE: The above description of the tract nominated for lease has been provided exclusively by the party nominating the tract for lease.

Maps depicting the nominated tract, containing the bearings, distances and coordinates of the nominated tract based on the Louisiana Coordinate System of 1927, North or South Zone, as applicable, are available for public inspection and review at the offices of the Louisiana State Mineral Board from 10:00 a.m. to 3:00 p.m. Monday - Friday.

Any mineral lease selected from the nominated tract and awarded by the Louisiana State Mineral Board shall be without warranty of any kind, either express, implied, or statutory, including, but not limited to, the implied warranties or merchantability and fitness for a particular purpose. Should the mineral lease awarded by the Louisiana State Mineral Board be subsequently modified, cancelled or abrogated due to the existence of conflicting leases, operating agreements, private claims or other existing or future obligations or conditions which may affect all or any portion of the leased tract, it shall not relieve the Lessee of the obligation to pay any bonus due thereon to the Louisiana State Mineral Board, nor shall the Louisiana State Mineral Board be obligated to refund any consideration paid by the Lessee prior to such modification, cancellation, or abrogation, including, but not limited to, bonuses, rents and royalties.

NOTE: The State of Louisiana does hereby reserve, and this lease shall be subject to, the imprescriptible right of surface use in the nature of a servitude in favor of the Department of Natural Resources and/or the Louisiana Department of Wildlife and Fisheries, including its Offices and Commissions, for the sole purpose of implementing, constructing, servicing and maintaining approved coastal zone management and/or restoration projects. Utilization of any and all rights derived under this lease by the mineral lessee, its agents, successors or assigns, shall not interfere with nor hinder the reasonable surface use by the Department of Natural Resources and/or the Louisiana Department of Wildlife and Fisheries, its Offices or Commissions, as hereinabove reserved.

Applicant: Louisiana Coastal Exploration, Inc.

(P.O.B.) A

3 MILE LINE
JUNE 1975 DECREE
OF THE SUPREME COURT

EAST CAMERON AREA, REVISED
BLOCK 22

GULF OF MEXICO

$$Y=327810.830 \quad X=1553790.240$$

1-A NORTH-2673.074'

GRAPHIC SCALE

0 2000' 4000' 8000'

NOTE:

NAD83 COORDINATES WERE CONVERTED TO/FROM NAD27 COORDINATES USING THE CORPSCON SOFTWARE FROM THE U.S. ARMY TOPOGRAPHIC ENGINEERING CENTER.

NO.	DATE
-----	------

REVISION

CAMERON PARISH, LOUISIANA

TRACT 34548 - PORTION OF BLOCK 18, EAST CAMERON AREA, REVISED, Cameron Parish, Louisiana

That portion of Block 18, East Cameron Area, Revised, Cameron Parish, Louisiana, belonging to the State of Louisiana and not under mineral lease on July 10, 2002, described as follows: Beginning at a point at the Southeast corner of Block 18, East Cameron Area, Revised, having Coordinates of X = 1,568,548.288 and Y = 330,483.904, said point being the point of beginning; thence West along the South line of said Block 18 a distance of 7,379.024 feet to a point having Coordinates of X = 1,561,169.264 and Y = 330,483.904; thence North a distance of 7,379.024 feet to point having Coordinates of X = 1,561,169.264 and Y = 337,862.928; thence East a distance of 7,379.024 feet to a point on the East line of said Block 18 having Coordinates of X = 1,568,548.288 and Y = 337,862.928; thence South along the East line of said Block 18 a distance of 7,379.024 feet to the point of beginning, containing approximately **1,250.00 acres**, as shown outlined on a plat on file in the Office of Mineral Resources, Department of Natural Resources, as provided by the applicant. All bearings, distances and coordinates are based on Louisiana Coordinate System of 1927 (South Zone).

NOTE: The above description of the tract nominated for lease has been provided exclusively by the party nominating the tract for lease.

Maps depicting the nominated tract, containing the bearings, distances and coordinates of the nominated tract based on the Louisiana Coordinate System of 1927, North or South Zone, as applicable, are available for public inspection and review at the offices of the Louisiana State Mineral Board from 10:00 a.m. to 3:00 p.m. Monday - Friday.

Any mineral lease selected from the nominated tract and awarded by the Louisiana State Mineral Board shall be without warranty of any kind, either express, implied, or statutory, including, but not limited to, the implied warranties or merchantability and fitness for a particular purpose. Should the mineral lease awarded by the Louisiana State Mineral Board be subsequently modified, cancelled or abrogated due to the existence of conflicting leases, operating agreements, private claims or other existing or future obligations or conditions which may affect all or any portion of the leased tract, it shall not relieve the Lessee of the obligation to pay any bonus due thereon to the Louisiana State Mineral Board, nor shall the Louisiana State Mineral Board be obligated to refund any consideration paid by the Lessee prior to such modification, cancellation, or abrogation, including, but not limited to, bonuses, rents and royalties.

NOTE: The State of Louisiana does hereby reserve, and this lease shall be subject to, the imprescriptible right of surface use in the nature of a servitude in favor of the Department of Natural Resources and/or the

Louisiana Department of Wildlife and Fisheries, including its Offices and Commissions, for the sole purpose of implementing, constructing, servicing and maintaining approved coastal zone management and/or restoration projects. Utilization of any and all rights derived under this lease by the mineral lessee, its agents, successors or assigns, shall not interfere with nor hinder the reasonable surface use by the Department of Natural Resources and/or the Louisiana Department of Wildlife and Fisheries, its Offices or Commissions, as hereinabove reserved.

Applicant: Louisiana Coastal Exploration, Inc.

LOUISIANA COORDINATE SYSTEM
(1927 SOUTH ZONE)

SHORELINE OF THE
JUNE, 1975 DECREE OF THE
SUPREME COURT

(NAD 83)

(P.O.B.) A Y=391194.175 X=2849345.742

(NAD 27)

(P.O.B.) A Y=330483.904 X=1568548.288

B Y=330483.904 X=1561169.264

C Y=337862.928 X=1561169.264

D Y=337862.928 X=1568548.288

COURSES:

A-B WEST-7379.024'

B-C NORTH-7379.024'

C-D EAST-7379.024'

D-A SOUTH-7379.024'

EAST CAMERON AREA, REVISED BLOCK 18

C

D

TR 34548
1,250.00 ± ACS.
JULY, 2002

B

(P.O.B.) A

GULF OF MEXICO

GRAPHIC SCALE

0 2000' 4000' 8000'

NOTE: UNLESS OTHERWISE NOTED
COORDINATES ARE BASED ON NAD27.

NOTE:
NAD83 COORDINATES WERE CONVERTED
TO/FROM NAD27 COORDINATES USING THE
CORPSCON SOFTWARE FROM THE U.S.
ARMY TOPOGRAPHIC ENGINEERING CENTER.

REVISION

CAMERON PARISH, LOUISIANA

TRACT 34549 - PORTION OF BLOCK 22, EAST CAMERON AREA, REVISED, Cameron Parish, Louisiana

That portion of Block 22, East Cameron Area, Revised, Cameron Parish, Louisiana, belonging to the State of Louisiana and not under mineral lease on July 10, 2002, described as follows: Beginning at a point at the Northeast corner of Block 22, East Cameron Area, Revised, having Coordinates of X = 1,568,548.288 and Y = 330,483.904, said point being the point of beginning; thence South along the East line of said Block 22 a distance of 8,447.211 feet to a point on the 3 mile line, June, 1975, decree of the Supreme Court having Coordinates of X = 1,568,548.288 and Y = 322,036.693; thence North 69 degrees 51 minutes 36 seconds West along the said 3 mile line a distance of 3,407.652 feet to a point having Coordinates of X = 1,565,349.000 and Y = 323,210.000; thence along said 3 mile along a curve to the right having a radius of 18,240.600 feet, a length of 1,981.864 feet and a radius point having Coordinates of X = 1,571,629.257 and Y = 340,335.357 to a point on the said 3 mile line having Coordinates of X = 1,563,529.000 and Y = 323,992.000; thence North 63 degrees 42 minutes 19 seconds West along said 3 mile line a distance of 474.052 feet to a point having Coordinates of X = 1,563,104.000 and Y = 324,202.000; thence North 68 degrees 41 minutes 47 seconds West along said 3 mile line to a point having Coordinates of X = 1,561,169.264 and Y = 324,956.461; thence North a distance of 5,527.443 feet to a point on the North line of said Block 22 having Coordinates of X = 1,561,169.264 and Y = 330,483.904; thence East along said North line a distance of 7,379.024 feet to the point of beginning, containing approximately **1,190.29 acres**, as shown outlined on a plat on file in the Office of Mineral Resources, Department of Natural Resources, as provided by the applicant, **LESS AND EXCEPT** that portion thereof, if any, which is more than three nautical miles from the coast line as determined by the Report of the Special Master in the litigation in the Supreme Court of the United States styled United States v. State of Louisiana et al No. 9 Original, said three mile line as set out in the June, 1975, decree of the Supreme Court. All bearings, distances and coordinates are based on Louisiana Coordinate System of 1927 (South Zone).

NOTE: The above description of the tract nominated for lease has been provided exclusively by the party nominating the tract for lease.

Maps depicting the nominated tract, containing the bearings, distances and coordinates of the nominated tract based on the Louisiana Coordinate System of 1927, North or South Zone, as applicable, are available for public inspection and review at the offices of the Louisiana State Mineral Board from 10:00 a.m. to 3:00 p.m. Monday - Friday.

Any mineral lease selected from the nominated tract and awarded by the Louisiana State Mineral Board shall be without warranty of any kind, either express, implied, or statutory, including, but not limited to, the

implied warranties or merchantability and fitness for a particular purpose. Should the mineral lease awarded by the Louisiana State Mineral Board be subsequently modified, cancelled or abrogated due to the existence of conflicting leases, operating agreements, private claims or other existing or future obligations or conditions which may affect all or any portion of the leased tract, it shall not relieve the Lessee of the obligation to pay any bonus due thereon to the Louisiana State Mineral Board, nor shall the Louisiana State Mineral Board be obligated to refund any consideration paid by the Lessee prior to such modification, cancellation, or abrogation, including, but not limited to, bonuses, rents and royalties.

NOTE: The State of Louisiana does hereby reserve, and this lease shall be subject to, the imprescriptible right of surface use in the nature of a servitude in favor of the Department of Natural Resources and/or the Louisiana Department of Wildlife and Fisheries, including its Offices and Commissions, for the sole purpose of implementing, constructing, servicing and maintaining approved coastal zone management and/or restoration projects. Utilization of any and all rights derived under this lease by the mineral lessee, its agents, successors or assigns, shall not interfere with nor hinder the reasonable surface use by the Department of Natural Resources and/or the Louisiana Department of Wildlife and Fisheries, its Offices or Commissions, as hereinabove reserved.

Applicant: Louisiana Coastal Exploration, Inc.

LOUISIANA COORDINATE SYSTEM
(1927 SOUTH ZONE)

3 MILE LINE
JUNE, 1975 DECREE OF THE
SUPREME COURT

G

(P.O.B.) A

TR 34549
1,190.29 ± ACS.
JULY, 2002

F

E D

C

B

EAST CAMERON AREA, REVISED
BLOCK 22

GULF OF MEXICO

(NAD 83)

(P.O.B.) A Y=391194.450 X=2849345.743

(NAD 27)

(P.O.B.) A Y=330483.904 X=1568548.288

B Y=322036.693 X=1568548.288

C Y=323210.000 X=1565349.000

D Y=323992.000 X=1563529.000

E Y=324202.000 X=1563104.000

F Y=324956.461 X=1561169.264

G Y=330483.904 X=1561169.264

COURSES:

A-B SOUTH-8447.211'

B-C N69°51'36"W-3407.652'

C-D R=18240.600'

L=1981.864'

RADIUS POINT

Y=340335.357

X=1571629.257

D-E N63°42'19"W-474.052'

E-F N68°41'47"W-2076.636'

F-G NORTH-5527.443'

G-A EAST-7379.024'

GRAPHIC SCALE

0 2000' 4000' 8000'

NOTE: UNLESS OTHERWISE NOTED
COORDINATES ARE BASED ON NAD27.

NOTE:
NAD83 COORDINATES WERE CONVERTED
TO/FROM NAD27 COORDINATES USING THE
CORPSCON SOFTWARE FROM THE U.S.
ARMY TOPOGRAPHIC ENGINEERING CENTER.

NO.	DATE	REVISION

CAMERON PARISH, LOUISIANA

TRACT 34550 - PORTION OF BLOCK 14, EUGENE ISLAND AREA, REVISED, St. Mary Parish, Louisiana

That portion of Block 14, Eugene Island Area, Revised, St. Mary Parish, Louisiana, belonging to the State of Louisiana and not under mineral lease on July 10, 2002, described as follows: Beginning at the Southeast corner of Block 14, Eugene Island Area, Revised, having Coordinates of X = 1,969,955.68 and Y = 255,394.00; thence West 2,955.68 feet along the South line of said Block 14, Eugene Island Area, Revised, to a point on the Eastern boundary of State Lease No. 7869, as amended, having Coordinates of X = 1,967,000.00 and Y = 255,394.00; thence along the Eastern boundary of said State Lease No. 7869 the following courses: North 29 degrees 41 minutes 53 seconds East 605.54 feet to a point having Coordinates of X = 1,967,300.00 and Y = 255,920.00; North 21 degrees 09 minutes 41 seconds East 332.42 feet to a point having Coordinates of X = 1,967,420.00 and Y = 256,230.00; North 16 degrees 59 minutes 27 seconds East 376.43 feet to a point having Coordinates of X = 1,967,530.00 and Y = 256,590.00; North 11 degrees 18 minutes 36 seconds East 254.95 feet to a point having Coordinates of X = 1,967,580.00 and Y = 256,840.00 and North 260.00 feet to its Northeast corner having Coordinates of X = 1,967,580.00 and Y = 257,100.00; thence along the Northern boundary of said State Lease No. 7869 the following courses: North 88 degrees 11 minutes 15 seconds West 1,580.79 feet to a point having Coordinates of X = 1,966,000.00 and Y = 257,150.00; North 88 degrees 16 minutes 54 seconds West 1,000.45 feet to a point having Coordinates of X = 1,965,000.00 and Y = 257,180.00; North 89 degrees 48 minutes 32 seconds West 3,000.02 feet to a point having Coordinates of X = 1,962,000.00 and Y = 257,190.00 and South 89 degrees 01 minutes 16 seconds West 1,170.77 feet to its Northwest corner, said corner also being the Northeast corner of State Lease No. 7868, as amended, having Coordinates of X = 1,960,829.40 and Y = 257,170.00; thence along the Northern boundary of said State Lease No. 7868 the following courses: South 85 degrees 41 minutes 54 seconds West 1,333.16 feet to a point having Coordinates of X = 1,959,500.00 and Y = 257,070.00; South 82 degrees 01 minutes 49 seconds West 504.88 feet to a point having Coordinates of X = 1,959,000.00 and Y = 257,000.00 and South 79 degrees 27 minutes 57 seconds West 1,424.92 feet to a point having Coordinates of X = 1,957,599.10 and Y = 256,739.49; thence North 20.51 feet to a point having Coordinates of X = 1,957,599.10 and Y = 256,760.00; thence North 1,300.00 feet to a point having Coordinates of X = 1,957,599.10 and Y = 258,060.00; thence East 1,700.90 feet to a point having Coordinates of X = 1,959,300.00 and Y = 258,060.00; thence East 1,199.10 feet to a point having Coordinates of X = 1,960,499.10 and Y = 258,060.00; thence North 2,240.00 feet to a point having Coordinates of X = 1,960,499.10 and Y = 260,300.00; thence East 9,456.58 feet to a point on the East line of said Block 14, Eugene Island Area, Revised, having Coordinates of X = 1,969,955.68 and Y = 260,300.00; thence South 4,906.00 feet along the East

line of said Block 14, Eugene Island Area, Revised, to the point of beginning, containing **856.54 acres**, as shown outlined on a plat on file in the Office of Mineral Resources, Department of Natural Resources, as provided by the applicant. All bearings, distances and coordinates are based on Louisiana Coordinate System of 1927 (South Zone).

NOTE: The above description of the tract nominated for lease has been provided exclusively by the party nominating the tract for lease.

Maps depicting the nominated tract, containing the bearings, distances and coordinates of the nominated tract based on the Louisiana Coordinate System of 1927, North or South Zone, as applicable, are available for public inspection and review at the offices of the Louisiana State Mineral Board from 10:00 a.m. to 3:00 p.m. Monday - Friday.

Any mineral lease selected from the nominated tract and awarded by the Louisiana State Mineral Board shall be without warranty of any kind, either express, implied, or statutory, including, but not limited to, the implied warranties or merchantability and fitness for a particular purpose. Should the mineral lease awarded by the Louisiana State Mineral Board be subsequently modified, cancelled or abrogated due to the existence of conflicting leases, operating agreements, private claims or other existing or future obligations or conditions which may affect all or any portion of the leased tract, it shall not relieve the Lessee of the obligation to pay any bonus due thereon to the Louisiana State Mineral Board, nor shall the Louisiana State Mineral Board be obligated to refund any consideration paid by the Lessee prior to such modification, cancellation, or abrogation, including, but not limited to, bonuses, rents and royalties.

NOTE: This tract may be located within the Atchafalaya Delta Wildlife Management Area. Any operations on said tract shall be coordinated with the Louisiana Department of Wildlife and Fisheries. Special Rules and Regulations have been promulgated by the Louisiana Department of Wildlife and Fisheries for the protection of the game and wildlife for some management areas. Any lease awarded by the Board on said tract may be subject to any applicable Rules and Regulations of said management area. Copies of these Rules and Regulations may be obtained from the Louisiana Department of Wildlife and Fisheries through the Assistant Secretary, Office of Wildlife, upon request.

NOTE: The Department of Wildlife and Fisheries has designated certain areas in the coastal waters of the State of Louisiana as Oyster Seed Bed Areas. The exact location of those Seed Bed Areas must be obtained from Wildlife and Fisheries and any work done under an oil, gas and other liquid or gaseous mineral lease from the State of Louisiana must be conducted in conformity with the rules and regulations promulgated by the said Department of Wildlife and Fisheries for Oyster Seed Bed Areas.

NOTE: The State of Louisiana does hereby reserve, and this lease shall be subject to, the imprescriptible right of surface use in the nature of a servitude in favor of the Department of Natural Resources and/or the

Louisiana Department of Wildlife and Fisheries, including its Offices and Commissions, for the sole purpose of implementing, constructing, servicing and maintaining approved coastal zone management and/or restoration projects. Utilization of any and all rights derived under this lease by the mineral lessee, its agents, successors or assigns, shall not interfere with nor hinder the reasonable surface use by the Department of Natural Resources and/or the Louisiana Department of Wildlife and Fisheries, its Offices or Commissions, as hereinabove reserved.

Applicant: AG Expl. & Prod.

EUGENE ISLAND AREA, REVISED

MEXICO

NAD 1927 (South Zone)

OF

Blk. 14

Blk. 13

GULF

TR 34550
856.54 ± ACS.
JULY, 2002

S. L. 16984

S. L. 16987

S. L. 7868

S. L. 7869

Blk. 15

P.O.B.

X = 1,969,955.68
Y = 255,394.00

Blk. 18

Blk. 17

56

ST. MARY

PARISH,

LOUISIANA

SCALE : 1" = 3000'

TRACT 34551 - PORTION OF BLOCK 17, EUGENE ISLAND AREA, REVISED, St. Mary Parish, Louisiana

That portion of Block 17, Eugene Island Area, Revised, St. Mary Parish, Louisiana, belonging to the State of Louisiana and not under mineral lease on July 10, 2002, described as follows: Beginning at the Northeast corner of Block 17, Eugene Island Area, Revised, having Coordinates of X = 1,969,955.68 and Y = 255,394.00; thence South 2,994.00 feet along the East line of said Block 17, Eugene Island Area, Revised, to the Northeast corner of State Lease No. 16990 having Coordinates of X = 1,969,955.68 and Y = 252,400.00; thence West 5,389.01 feet along the North line of said State Lease No. 16990 to a point on the Eastern boundary of State Lease No. 7870, as amended, having Coordinates of X = 1,964,566.67 and Y = 252,400.00; thence along the Eastern boundary of said State Lease No. 7870, as amended, the following courses: North 38 degrees 14 minutes 02 seconds East 700.20 feet to a point having Coordinates of X = 1,965,000.00 and Y = 252,950.00; North 40 degrees 20 minutes 40 seconds East 2,178.00 feet to a point having Coordinates of X = 1,966,410.00 and Y = 254,610.00; North 39 degrees 22 minutes 10 seconds East 504.48 feet to a point having Coordinates of X = 1,966,730.00 and Y = 255,000.00 and North 34 degrees 25 minutes 19 seconds East 477.64 feet to a point on the North line of said Block 17, Eugene Island Area, Revised, having Coordinates of X = 1,967,000.00 and Y = 255,394.00; thence East 2,955.68 feet along the North line of said Block 17, Eugene Island Area, Revised, to the point of beginning, containing approximately **285.56 acres**, as shown outlined on a plat on file in the Office of Mineral Resources, Department of Natural Resources, as provided by the applicant. All bearings, distances and coordinates are based on Louisiana Coordinate System of 1927 (South Zone).

NOTE: The above description of the tract nominated for lease has been provided exclusively by the party nominating the tract for lease.

Maps depicting the nominated tract, containing the bearings, distances and coordinates of the nominated tract based on the Louisiana Coordinate System of 1927, North or South Zone, as applicable, are available for public inspection and review at the offices of the Louisiana State Mineral Board from 10:00 a.m. to 3:00 p.m. Monday - Friday.

Any mineral lease selected from the nominated tract and awarded by the Louisiana State Mineral Board shall be without warranty of any kind, either express, implied, or statutory, including, but not limited to, the implied warranties or merchantability and fitness for a particular purpose. Should the mineral lease awarded by the Louisiana State Mineral Board be subsequently modified, cancelled or abrogated due to the existence of conflicting leases, operating agreements, private claims or other existing of future obligations or conditions which may affect all or any portion of the leased tract, it shall not relieve the Lessee of the obligation to pay any bonus due thereon to the Louisiana State Mineral

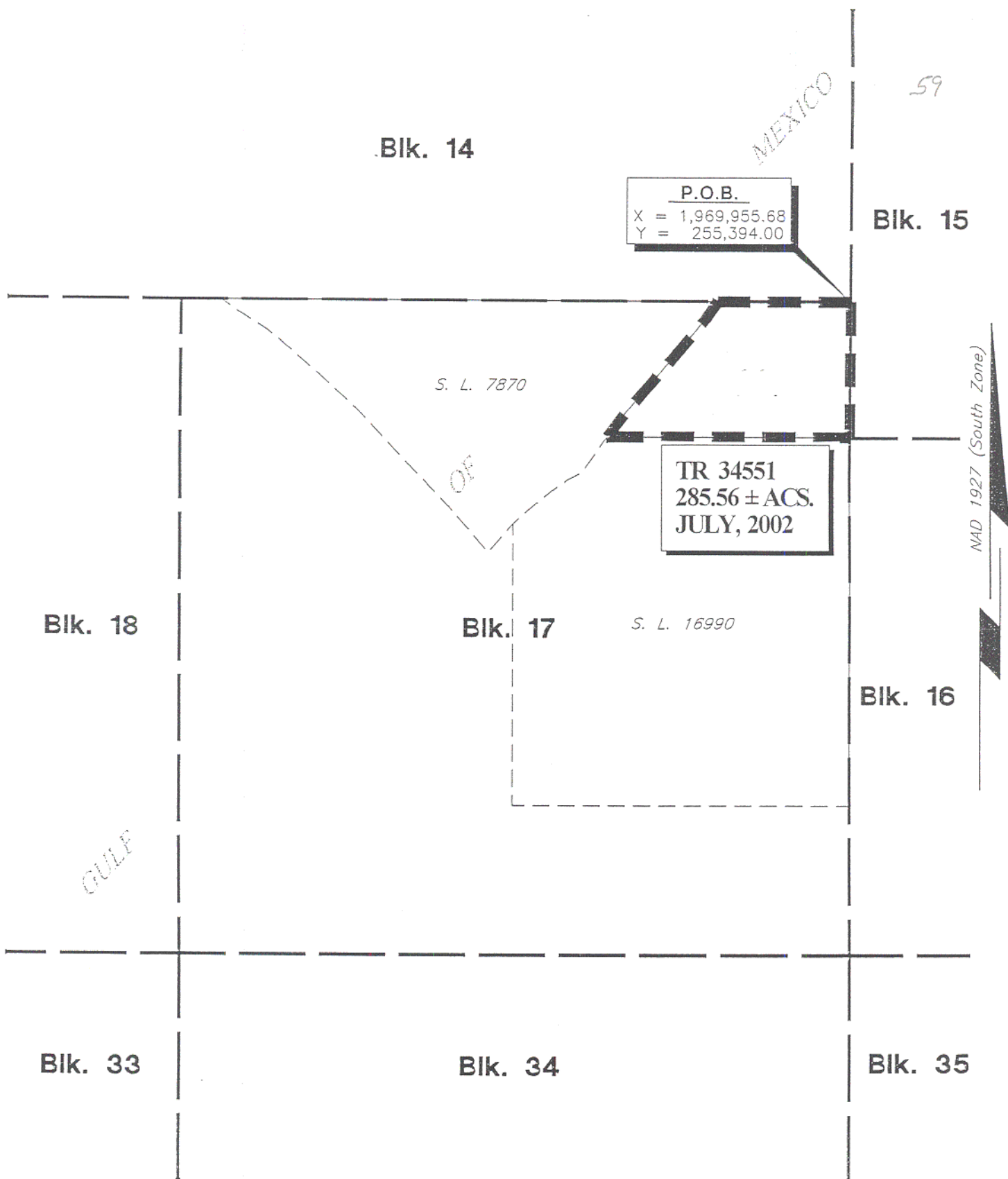
Board, nor shall the Louisiana State Mineral Board be obligated to refund any consideration paid by the Lessee prior to such modification, cancellation, or abrogation, including, but not limited to, bonuses, rents and royalties.

NOTE: This tract may be located within the .Atchafalaya Delta Wildlife Management Area. Any operations on said tract shall be coordinated with the Louisiana Department of Wildlife and Fisheries. Special Rules and Regulations have been promulgated by the Louisiana Department of Wildlife and Fisheries for the protection of the game and wildlife for some management areas. Any lease awarded by the Board on said tract may be subject to any applicable Rules and Regulations of said management area. Copies of these Rules and Regulations may be obtained from the Louisiana Department of Wildlife and Fisheries through the Assistant Secretary, Office of Wildlife, upon request.

NOTE: The Department of Wildlife and Fisheries has designated certain areas in the coastal waters of the State of Louisiana as Oyster Seed Bed Areas. The exact location of those Seed Bed Areas must be obtained from Wildlife and Fisheries and any work done under an oil, gas and other liquid or gaseous mineral lease from the State of Louisiana must be conducted in conformity with the rules and regulations promulgated by the said Department of Wildlife and Fisheries for Oyster Seed Bed Areas.

NOTE: The State of Louisiana does hereby reserve, and this lease shall be subject to, the imprescriptible right of surface use in the nature of a servitude in favor of the Department of Natural Resources and/or the Louisiana Department of Wildlife and Fisheries, including its Offices and Commissions, for the sole purpose of implementing, constructing, servicing and maintaining approved coastal zone management and/or restoration projects. Utilization of any and all rights derived under this lease by the mineral lessee, its agents, successors or assigns, shall not interfere with nor hinder the reasonable surface use by the Department of Natural Resources and/or the Louisiana Department of Wildlife and Fisheries, its Offices or Commissions, as hereinabove reserved.

Applicant: AG Expl. & Prod.



TRACT 34552 - PORTION OF BLOCK 17, EUGENE ISLAND AREA, REVISED, St. Mary Parish, Louisiana

That portion of Block 17, Eugene Island Area, Revised, St. Mary Parish, Louisiana, belonging to the State of Louisiana and not under mineral lease on July 10, 2002, described as follows: Beginning at the Southeast corner of Block 17, Eugene Island Area, Revised, having Coordinates of X = 1,969,955.68 and Y = 240,895.42; thence West 7,511.08 feet along the South line of said Block 17, Eugene Island Area, Revised, to a point having Coordinates of X = 1,962,444.60 and Y = 240,895.42; thence North 3,304.58 feet to the Southwest corner of State Lease No. 16990 having Coordinates of X = 1,962,444.60 and Y = 244,200.00; thence East 7,511.08 feet along the South line of said State Lease No. 16990 to its Southeast corner, said corner also being a point on the East line of said Block 17, Eugene Island Area, Revised, having Coordinates of X = 1,969,955.68 and Y = 244,200.00; thence South 3,304.58 feet along the East line of said Block 17, Eugene Island Area, Revised, to the point of beginning, containing approximately **569.81 acres**, as shown outlined on a plat on file in the Office of Mineral Resources, Department of Natural Resources, as provided by the applicant. All bearings, distances and coordinates are based on Louisiana Coordinate System of 1927 (South Zone).

NOTE: The above description of the tract nominated for lease has been provided exclusively by the party nominating the tract for lease.

Maps depicting the nominated tract, containing the bearings, distances and coordinates of the nominated tract based on the Louisiana Coordinate System of 1927, North or South Zone, as applicable, are available for public inspection and review at the offices of the Louisiana State Mineral Board from 10:00 a.m. to 3:00 p.m. Monday - Friday.

Any mineral lease selected from the nominated tract and awarded by the Louisiana State Mineral Board shall be without warranty of any kind, either express, implied, or statutory, including, but not limited to, the implied warranties or merchantability and fitness for a particular purpose. Should the mineral lease awarded by the Louisiana State Mineral Board be subsequently modified, cancelled or abrogated due to the existence of conflicting leases, operating agreements, private claims or other existing or future obligations or conditions which may affect all or any portion of the leased tract, it shall not relieve the Lessee of the obligation to pay any bonus due thereon to the Louisiana State Mineral Board, nor shall the Louisiana State Mineral Board be obligated to refund any consideration paid by the Lessee prior to such modification, cancellation, or abrogation, including, but not limited to, bonuses, rents and royalties.

NOTE: It appears, according to our records, that a portion of this tract is located within the restrictive safety fairway area as set out by the

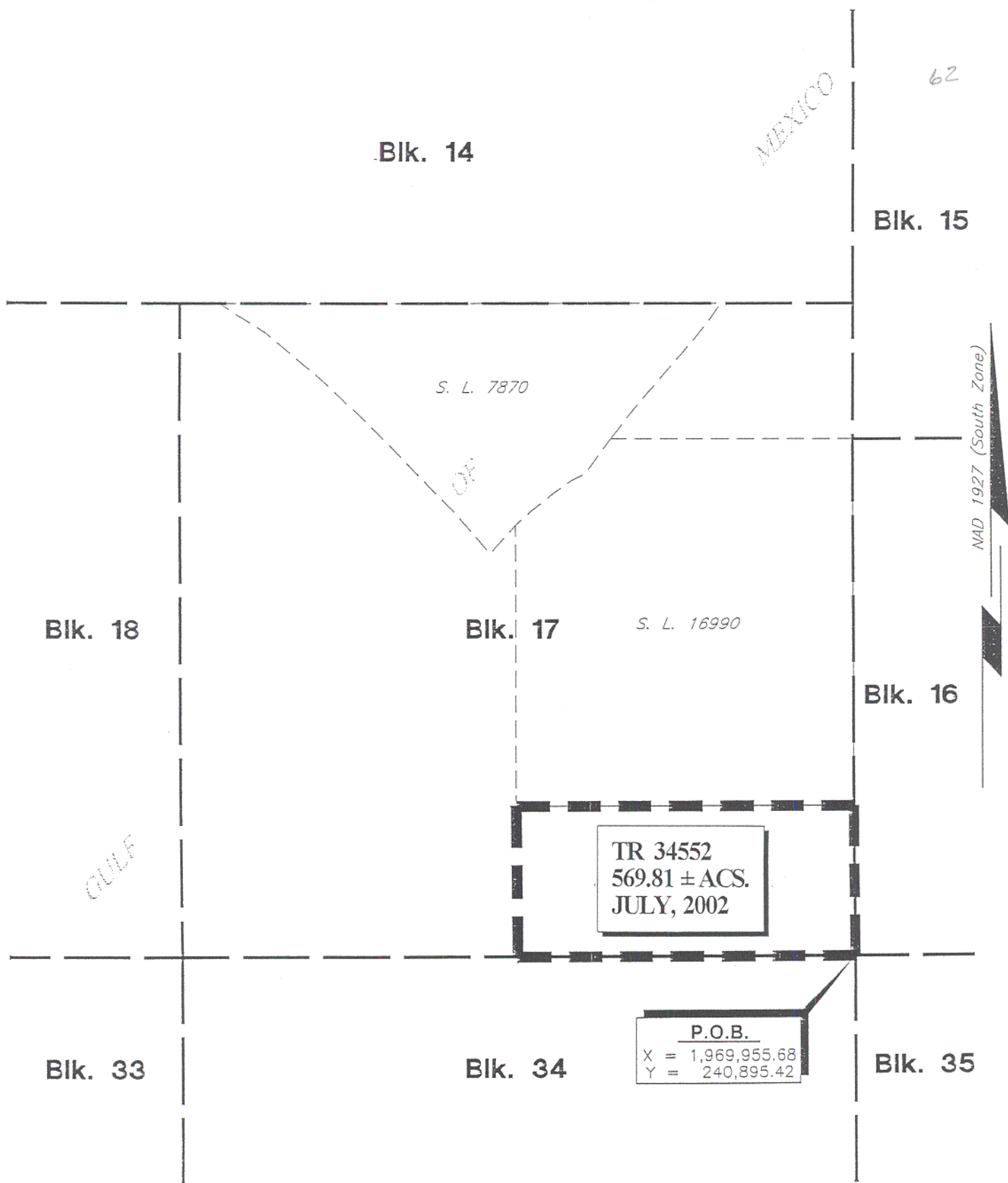
Corps of Engineers, U.S. Army and/or the restrictive anchorage area as set out by the U.S. Coast Guard.

NOTE: This tract may be located within the Atchafalaya Delta Wildlife Management Area . Any operations on said tract shall be coordinated with the Louisiana Department of Wildlife and Fisheries. Special Rules and Regulations have been promulgated by the Louisiana Department of Wildlife and Fisheries for the protection of the game and wildlife for some management areas. Any lease awarded by the Board on said tract may be subject to any applicable Rules and Regulations of said management area. Copies of these Rules and Regulations may be obtained from the Louisiana Department of Wildlife and Fisheries through the Assistant Secretary, Office of Wildlife, upon request.

NOTE: The Department of Wildlife and Fisheries has designated certain areas in the coastal waters of the State of Louisiana as Oyster Seed Bed Areas. The exact location of those Seed Bed Areas must be obtained from Wildlife and Fisheries and any work done under an oil, gas and other liquid or gaseous mineral lease from the State of Louisiana must be conducted in conformity with the rules and regulations promulgated by the said Department of Wildlife and Fisheries for Oyster Seed Bed Areas.

NOTE: The State of Louisiana does hereby reserve, and this lease shall be subject to, the imprescriptible right of surface use in the nature of a servitude in favor of the Department of Natural Resources and/or the Louisiana Department of Wildlife and Fisheries, including its Offices and Commissions, for the sole purpose of implementing, constructing, servicing and maintaining approved coastal zone management and/or restoration projects. Utilization of any and all rights derived under this lease by the mineral lessee, its agents, successors or assigns, shall not interfere with nor hinder the reasonable surface use by the Department of Natural Resources and/or the Louisiana Department of Wildlife and Fisheries, its Offices or Commissions, as hereinabove reserved.

Applicant: AG Expl. & Prod.



ST. MARY PARISH, LOUISIANA

SCALE : 1" = 3000'

TRACT 34553 - PORTION OF BLOCK 15, EUGENE ISLAND AREA, REVISED, St. Mary Parish, Louisiana

That portion of Block 15, Eugene Island Area, Revised, St. Mary Parish, Louisiana, belonging to the State of Louisiana and not under mineral lease on July 10, 2002, described as follows: Beginning at the Southwest corner of Block 15, Eugene Island Area, Revised, having Coordinates of X = 1,969,955.68 and Y = 252,394.00; thence North 7,906.00 feet along the West line of said Block 15, Eugene Island Area, Revised, to a point having Coordinates of X = 1,969,955.68 and Y = 260,300.00; thence East 3,544.32 feet to a point having Coordinates of X = 1,973,500.00 and Y = 260,300.00; thence South 66 degrees 13 minutes 05 seconds East 6,447.48 feet to a point having Coordinates of X = 1,979,400.00 and Y = 257,700.00; thence South 5,306.00 feet to a point on the South line of said Block 15, Eugene Island Area, Revised, having Coordinates of X = 1,979,400.00 and Y = 252,394.00; thence West 9,444.32 feet along the South line of said Block 15, Eugene Island Area, Revised, to the point of beginning, containing approximately **1,538.03 acres**, as shown outlined on a plat on file in the Office of Mineral Resources, Department of Natural Resources, as provided by the applicant. All bearings, distances and coordinates are based on Louisiana Coordinate System of 1927 (South Zone).

NOTE: The above description of the tract nominated for lease has been provided exclusively by the party nominating the tract for lease.

Maps depicting the nominated tract, containing the bearings, distances and coordinates of the nominated tract based on the Louisiana Coordinate System of 1927, North or South Zone, as applicable, are available for public inspection and review at the offices of the Louisiana State Mineral Board from 10:00 a.m. to 3:00 p.m. Monday - Friday.

Any mineral lease selected from the nominated tract and awarded by the Louisiana State Mineral Board shall be without warranty of any kind, either express, implied, or statutory, including, but not limited to, the implied warranties or merchantability and fitness for a particular purpose. Should the mineral lease awarded by the Louisiana State Mineral Board be subsequently modified, cancelled or abrogated due to the existence of conflicting leases, operating agreements, private claims or other existing or future obligations or conditions which may affect all or any portion of the leased tract, it shall not relieve the Lessee of the obligation to pay any bonus due thereon to the Louisiana State Mineral Board, nor shall the Louisiana State Mineral Board be obligated to refund any consideration paid by the Lessee prior to such modification, cancellation, or abrogation, including, but not limited to, bonuses, rents and royalties.

NOTE: This tract may be located within the Atchafalaya Delta Wildlife Management Area. Any operations on said tract shall be coordinated with

the Louisiana Department of Wildlife and Fisheries. Special Rules and Regulations have been promulgated by the Louisiana Department of Wildlife and Fisheries for the protection of the game and wildlife for some management areas. Any lease awarded by the Board on said tract may be subject to any applicable Rules and Regulations of said management area. Copies of these Rules and Regulations may be obtained from the Louisiana Department of Wildlife and Fisheries through the Assistant Secretary, Office of Wildlife, upon request.

NOTE: It appears, according to our records, that a portion of this tract is located within the restrictive safety fairway area as set out by the Corps of Engineers, U.S. Army and/or the restrictive anchorage area as set out by the U.S. Coast Guard.

NOTE: The Department of Wildlife and Fisheries has designated certain areas in the coastal waters of the State of Louisiana as Oyster Seed Bed Areas. The exact location of those Seed Bed Areas must be obtained from Wildlife and Fisheries and any work done under an oil, gas and other liquid or gaseous mineral lease from the State of Louisiana must be conducted in conformity with the rules and regulations promulgated by the said Department of Wildlife and Fisheries for Oyster Seed Bed Areas.

NOTE: The State of Louisiana does hereby reserve, and this lease shall be subject to, the imprescriptible right of surface use in the nature of a servitude in favor of the Department of Natural Resources and/or the Louisiana Department of Wildlife and Fisheries, including its Offices and Commissions, for the sole purpose of implementing, constructing, servicing and maintaining approved coastal zone management and/or restoration projects. Utilization of any and all rights derived under this lease by the mineral lessee, its agents, successors or assigns, shall not interfere with nor hinder the reasonable surface use by the Department of Natural Resources and/or the Louisiana Department of Wildlife and Fisheries, its Offices or Commissions, as hereinabove reserved.

Applicant: AG Expl. & Prod.

EUGENE ISLAND AREA, REVISED

MEXICO

NAD 1927 (South Zone)

BIK. 14

BIK. 15

BIK. 16

BIK. 17

TR 34553
1,538.03 ± ACS.
JULY, 2002

P.O.B.
X = 1,969,955.68
Y = 252,394.00

OF

CLIFF

65

ST. MARY PARISH, LOUISIANA

SCALE : 1" = 3000'

TRACT 34554 - PORTION OF BLOCK 16, EUGENE ISLAND AREA, REVISED, St. Mary Parish, Louisiana

That portion of Block 16, Eugene Island Area, Revised, St. Mary Parish, Louisiana, belonging to the State of Louisiana and not under mineral lease on July 10, 2002, described as follows: Beginning at the Northwest corner of Block 16, Eugene Island Area, Revised, having Coordinates of X = 1,969,955.68 and Y = 252,394.00; thence East 9,444.32 feet along the North line of Block 16, Eugene Island Area, Revised, to a point having Coordinates of X = 1,979,400.00 and Y = 252,394.00; thence South 11,498.58 feet to a point on the South line of said Block 16, Eugene Island Area, Revised, having Coordinates of X = 1,979,400.00 and Y = 240,895.42; thence West 9,444.32 feet along the South line of said Block 16, Eugene Island Area, Revised, to its Southwest corner having Coordinates of X = 1,969,955.68 and Y = 240,895.42; thence North 11,498.58 feet along the West line of said Block 16, Eugene Island Area, Revised, to the point of beginning, containing approximately **2,493.03 acres**, as shown outlined on a plat on file in the Office of Mineral Resources, Department of Natural Resources, as provided by the applicant. All bearings, distances and coordinates are based on Louisiana Coordinate System of 1927 (South Zone).

NOTE: The above description of the tract nominated for lease has been provided exclusively by the party nominating the tract for lease.

Maps depicting the nominated tract, containing the bearings, distances and coordinates of the nominated tract based on the Louisiana Coordinate System of 1927, North or South Zone, as applicable, are available for public inspection and review at the offices of the Louisiana State Mineral Board from 10:00 a.m. to 3:00 p.m. Monday - Friday.

Any mineral lease selected from the nominated tract and awarded by the Louisiana State Mineral Board shall be without warranty of any kind, either express, implied, or statutory, including, but not limited to, the implied warranties or merchantability and fitness for a particular purpose. Should the mineral lease awarded by the Louisiana State Mineral Board be subsequently modified, cancelled or abrogated due to the existence of conflicting leases, operating agreements, private claims or other existing or future obligations or conditions which may affect all or any portion of the leased tract, it shall not relieve the Lessee of the obligation to pay any bonus due thereon to the Louisiana State Mineral Board, nor shall the Louisiana State Mineral Board be obligated to refund any consideration paid by the Lessee prior to such modification, cancellation, or abrogation, including, but not limited to, bonuses, rents and royalties.

NOTE: This tract may be located within the Atchafalaya Delta Wildlife Management Area. Any operations on said tract shall be coordinated with the Louisiana Department of Wildlife and Fisheries. Special Rules and

Regulations have been promulgated by the Louisiana Department of Wildlife and Fisheries for the protection of the game and wildlife for some management areas. Any lease awarded by the Board on said tract may be subject to any applicable Rules and Regulations of said management area. Copies of these Rules and Regulations may be obtained from the Louisiana Department of Wildlife and Fisheries through the Assistant Secretary, Office of Wildlife, upon request.

NOTE: It appears, according to our records, that a portion of this tract is located within the restrictive safety fairway area as set out by the Corps of Engineers, U.S. Army and/or the restrictive anchorage area as set out by the U.S. Coast Guard.

NOTE: The Department of Wildlife and Fisheries has designated certain areas in the coastal waters of the State of Louisiana as Oyster Seed Bed Areas. The exact location of those Seed Bed Areas must be obtained from Wildlife and Fisheries and any work done under an oil, gas and other liquid or gaseous mineral lease from the State of Louisiana must be conducted in conformity with the rules and regulations promulgated by the said Department of Wildlife and Fisheries for Oyster Seed Bed Areas.

NOTE: The State of Louisiana does hereby reserve, and this lease shall be subject to, the imprescriptible right of surface use in the nature of a servitude in favor of the Department of Natural Resources and/or the Louisiana Department of Wildlife and Fisheries, including its Offices and Commissions, for the sole purpose of implementing, constructing, servicing and maintaining approved coastal zone management and/or restoration projects. Utilization of any and all rights derived under this lease by the mineral lessee, its agents, successors or assigns, shall not interfere with nor hinder the reasonable surface use by the Department of Natural Resources and/or the Louisiana Department of Wildlife and Fisheries, its Offices or Commissions, as hereinabove reserved.

Applicant: AG Expl. & Prod.

EUGENE ISLAND AREA, REVISED

Blk. 15

Bik. 17

Bik. 16

Bik. 36

Bik. 34

Blk. 35

P.O.B.

$$\begin{array}{r} X = 1,969,955.68 \\ Y = 252,394.00 \end{array}$$

TR 34554
2,493.03 ± ACS.
JULY, 2002

ST. MARY PARISH, LOUISIANA

SCALE : 1" = 3000'

68

TRACT 34555 - PORTION OF BLOCK 10, GRAND ISLE AREA, Jefferson Parish, Louisiana

That portion of Block 10, Grand Isle Area, Jefferson Parish, Louisiana, belonging to the State of Louisiana and not under mineral lease on July 10, 2002, described as follows: Beginning at a point located in Block 10, Grand Isle Area, being the Northwest corner of State Lease 17356 having Coordinates of X = 2,452,359.89 and Y = 192,914.41; thence South 7,379.02 feet along the West line of said State Lease No. 17356 to a point on the South line of said Block 10, also being the Southwest corner of said State Lease No. 17356 having Coordinates X = 2,452,359.89 and Y = 185,535.39; thence West 2,079.02 feet to the Southeast corner of State Lease No. 17355 having Coordinates of X = 2,450,280.87 and Y = 185,535.39; thence North 7,379.02 feet along the East line of State Lease 17355 to its Northeast corner having Coordinates of X = 2,450,280.87 and Y = 192,914.41; thence East 2,079.02 feet to the point of beginning, containing approximately **352.18 acres**, as shown outlined on a plat on file in the Office of Mineral Resources, Department of Natural Resources, as provided by the applicant. All bearings, distances and coordinates are based on Louisiana Coordinate System of 1927 (South Zone).

NOTE: The above description of the tract nominated for lease has been provided exclusively by the party nominating the tract for lease.

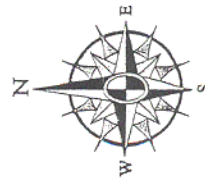
Maps depicting the nominated tract, containing the bearings, distances and coordinates of the nominated tract based on the Louisiana Coordinate System of 1927, North or South Zone, as applicable, are available for public inspection and review at the offices of the Louisiana State Mineral Board from 10:00 a.m. to 3:00 p.m. Monday - Friday.

Any mineral lease selected from the nominated tract and awarded by the Louisiana State Mineral Board shall be without warranty of any kind, either express, implied, or statutory, including, but not limited to, the implied warranties or merchantability and fitness for a particular purpose. Should the mineral lease awarded by the Louisiana State Mineral Board be subsequently modified, cancelled or abrogated due to the existence of conflicting leases, operating agreements, private claims or other existing or future obligations or conditions which may affect all or any portion of the leased tract, it shall not relieve the Lessee of the obligation to pay any bonus due thereon to the Louisiana State Mineral Board, nor shall the Louisiana State Mineral Board be obligated to refund any consideration paid by the Lessee prior to such modification, cancellation, or abrogation, including, but not limited to, bonuses, rents and royalties.

NOTE: The State of Louisiana does hereby reserve, and this lease shall be subject to, the imprescriptible right of surface use in the nature of a servitude in favor of the Department of Natural Resources and/or the

Louisiana Department of Wildlife and Fisheries, including its Offices and Commissions, for the sole purpose of implementing, constructing, servicing and maintaining approved coastal zone management and/or restoration projects. Utilization of any and all rights derived under this lease by the mineral lessee, its agents, successors or assigns, shall not interfere with nor hinder the reasonable surface use by the Department of Natural Resources and/or the Louisiana Department of Wildlife and Fisheries, its Offices or Commissions, as hereinabove reserved.

Applicant: SunCoast Land Services, Inc.



JEFFERSON AND/OR PLAQUEMINES PARISHES, LOUISIANA
GRAND ISLE AREA

3 Mile Line
71



11

17

10

18

19

9

X= 2,450,280.87
Y= 192,914.41

X= 2,450,280.87
Y= 185,535.39

X= 2,452,359.89
Y= 185,535.39

P.O.B.
X= 2,452,359.89
Y= 192,914.41

S.L. 17355

+/- 352.18
ACRES

S.L. 17356

S.L. 17357

TR 34555
352.18 ± ACS.
JULY, 2002

TRACT 34556 - PORTION OF BLOCK 35, CHANDELEUR SOUND AREA, ADDITION, REVISED, St. Bernard Parish, Louisiana

That portion of Block 35, Chandeleur Sound Area, Addition, Revised, St. Bernard Parish, Louisiana, belonging to the State of Louisiana and not under mineral lease on July 10, 2002, described as follows: Beginning at a point on the East line of Block 35, Chandeleur Sound Area, Addition, Revised, having Coordinates of X = 2,797,608.05 and Y = 492,015.38; thence West 5,935.99 feet to point having Coordinates of X = 2,791,672.06 and Y = 492,015.38; thence Northwesterly on a straight line to a point having Coordinates of X = 2,790,051 and Y = 496,115; thence Northwesterly on a straight line to a point having Coordinates of X = 2,788,518 and Y = 498,898; thence Northwesterly on a straight line to a point on the North line of said Block 35 having Coordinates of X = 2,788,228.12 and Y = 499,394.40; thence East 9,379.93 feet on the North line of said Block 35 to its Northeast corner having Coordinates X = 2,797,608.05 and Y = 499,394.40; thence South 7,379.03 feet to the point of beginning, containing approximately **1,271.97 acres**, as shown outlined on a plat on file in the Office of Mineral Resources, Department of Natural Resources, as provided by the applicant. All bearings, distances and coordinates are based on Louisiana Coordinate System of 1927 (South Zone).

NOTE: The above description of the tract nominated for lease has been provided exclusively by the party nominating the tract for lease.

Maps depicting the nominated tract, containing the bearings, distances and coordinates of the nominated tract based on the Louisiana Coordinate System of 1927, North or South Zone, as applicable, are available for public inspection and review at the offices of the Louisiana State Mineral Board from 10:00 a.m. to 3:00 p.m. Monday - Friday.

Any mineral lease selected from the nominated tract and awarded by the Louisiana State Mineral Board shall be without warranty of any kind, either express, implied, or statutory, including, but not limited to, the implied warranties or merchantability and fitness for a particular purpose. Should the mineral lease awarded by the Louisiana State Mineral Board be subsequently modified, cancelled or abrogated due to the existence of conflicting leases, operating agreements, private claims or other existing or future obligations or conditions which may affect all or any portion of the leased tract, it shall not relieve the Lessee of the obligation to pay any bonus due thereon to the Louisiana State Mineral Board, nor shall the Louisiana State Mineral Board be obligated to refund any consideration paid by the Lessee prior to such modification, cancellation, or abrogation, including, but not limited to, bonuses, rents and royalties.

NOTE: The Office of Mineral Resources will require a minimum bonus of \$130 per acre and a minimum royalty of 21%.

NOTE: The State of Louisiana does hereby reserve, and this lease shall be subject to, the imprescriptible right of surface use in the nature of a servitude in favor of the Department of Natural Resources and/or the Louisiana Department of Wildlife and Fisheries, including its Offices and Commissions, for the sole purpose of implementing, constructing, servicing and maintaining approved coastal zone management and/or restoration projects. Utilization of any and all rights derived under this lease by the mineral lessee, its agents, successors or assigns, shall not interfere with nor hinder the reasonable surface use by the Department of Natural Resources and/or the Louisiana Department of Wildlife and Fisheries, its Offices or Commissions, as hereinabove reserved.

Applicant: Christie G. O'Neal

Bik. 33

Bik. 34

GULF OF MEXICO
CHANDELEUR SOUND AREA
ADDITION, REV.

Bik. 36

Bik. 35

Bik. 1

TR 34556
1,271.97 ± ACS.
JULY, 2002

P. O. B.
X=2,797,608.05
Y= 492,015.38

CHANDELEUR AREA

NAD 27 LAMBERT LA. SOUTH ZONE

St. Bernard Parish, Louisiana

4000 0 4000

Scale In Feet

TRACT 34557 - PORTION OF BLOCK 35, CHANDELEUR SOUND AREA, ADDITION, REVISED, St. Bernard Parish, Louisiana

That portion of Block 35, Chandeleur Sound Area, Addition, Revised, St. Bernard Parish, Louisiana, belonging to the State of Louisiana and not under mineral lease on July 10, 2002, described as follows: Beginning at a point on the East line of Block 35, Chandeleur Sound Area, Addition, Revised, having Coordinates of X = 2,797,608.05 and Y = 492,015.38; thence South 7,379.03 feet on the East line of said Block 35 to its Southeast corner having Coordinates of X = 2,797,608.05 and Y = 484,636.35; thence West 3,702.52 feet on the South line of said Block 35 to a point having Coordinates of X = 2,793,905.53 and Y = 484,636.35; thence Northwesterly on a straight line to a point having Coordinates of X = 2,791,690 and Y = 491,970; thence Northwesterly on a straight line to a point having Coordinates of X = 2,791,672.06 and Y = 492,015.38; thence East 5,935.99 feet to the point of beginning, containing approximately **816.02 acres**, as shown outlined on a plat on file in the Office of Mineral Resources, Department of Natural Resources, as provided by the applicant. All bearings, distances and coordinates are based on Louisiana Coordinate System of 1927 (South Zone).

NOTE: The above description of the tract nominated for lease has been provided exclusively by the party nominating the tract for lease.

Maps depicting the nominated tract, containing the bearings, distances and coordinates of the nominated tract based on the Louisiana Coordinate System of 1927, North or South Zone, as applicable, are available for public inspection and review at the offices of the Louisiana State Mineral Board from 10:00 a.m. to 3:00 p.m. Monday - Friday.

Any mineral lease selected from the nominated tract and awarded by the Louisiana State Mineral Board shall be without warranty of any kind, either express, implied, or statutory, including, but not limited to, the implied warranties or merchantability and fitness for a particular purpose. Should the mineral lease awarded by the Louisiana State Mineral Board be subsequently modified, cancelled or abrogated due to the existence of conflicting leases, operating agreements, private claims or other existing or future obligations or conditions which may affect all or any portion of the leased tract, it shall not relieve the Lessee of the obligation to pay any bonus due thereon to the Louisiana State Mineral Board, nor shall the Louisiana State Mineral Board be obligated to refund any consideration paid by the Lessee prior to such modification, cancellation, or abrogation, including, but not limited to, bonuses, rents and royalties.

NOTE: The Office of Mineral Resources will require a minimum bonus of \$130 per acre and a minimum royalty of 21%.

NOTE: The State of Louisiana does hereby reserve, and this lease shall be subject to, the imprescriptible right of surface use in the nature of a servitude in favor of the Department of Natural Resources and/or the Louisiana Department of Wildlife and Fisheries, including its Offices and Commissions, for the sole purpose of implementing, constructing, servicing and maintaining approved coastal zone management and/or restoration projects. Utilization of any and all rights derived under this lease by the mineral lessee, its agents, successors or assigns, shall not interfere with nor hinder the reasonable surface use by the Department of Natural Resources and/or the Louisiana Department of Wildlife and Fisheries, its Offices or Commissions, as hereinabove reserved.

Applicant: Christie G. O'Neal

Bik. 33

Bik. 34

GULF OF MEXICO
CHANDELEUR SOUND AREA
ADDITION, REV.

Bik. 35

P. O. B.
X=2,797,608.05
Y=492,015.38

Bik. 36

CHANDELEUR AREA

Bik. 1

TR 34557
816.02 ± ACS.
JULY, 2002

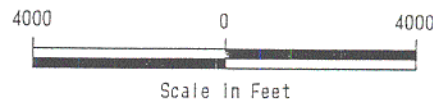
Bik. 57

Bik. 58

Bik. 2

PLAT ACCOMPANYING APPLICATION
FOR STATE LEASE

St. Bernard Parish, Louisiana



TRACT 34558 - PORTION OF BLOCK 58, CHANDELEUR SOUND AREA, ADDITION, REVISED, St. Bernard Parish, Louisiana

That portion of Block 58, Chandeleur Sound Area, Addition, Revised, St. Bernard Parish, Louisiana, belonging to the State of Louisiana and not under mineral lease on July 10, 2002, described as follows: Beginning at a point on the East line of Block 58, Chandeleur Sound Area, Addition, Revised, having Coordinates of X = 2,797,608.05 and Y = 477,257.33; thence West 1,742.71 feet to a point having Coordinates of X = 2,795,865.34 and Y = 477,257.32; thence Northwesterly on a straight line to a point having Coordinates of X = 2,794,789 and Y = 481,712; thence Northwesterly on a straight line to a point on the North line of said Block 58 having Coordinates of X = 2,793,905.53 and Y = 484,636.35; thence East 3,702.52 feet on the North line of said Block 58 to its Northeast corner having Coordinates of X = 2,797,608.05 and Y = 484,636.35; thence South 7,379.02 feet to the point of beginning, containing approximately **452.16 acres**, as shown outlined on a plat on file in the Office of Mineral Resources, Department of Natural Resources, as provided by the applicant. All bearings, distances and coordinates are based on Louisiana Coordinate System of 1927 (South Zone).

NOTE: The above description of the tract nominated for lease has been provided exclusively by the party nominating the tract for lease.

Maps depicting the nominated tract, containing the bearings, distances and coordinates of the nominated tract based on the Louisiana Coordinate System of 1927, North or South Zone, as applicable, are available for public inspection and review at the offices of the Louisiana State Mineral Board from 10:00 a.m. to 3:00 p.m. Monday - Friday.

Any mineral lease selected from the nominated tract and awarded by the Louisiana State Mineral Board shall be without warranty of any kind, either express, implied, or statutory, including, but not limited to, the implied warranties or merchantability and fitness for a particular purpose. Should the mineral lease awarded by the Louisiana State Mineral Board be subsequently modified, cancelled or abrogated due to the existence of conflicting leases, operating agreements, private claims or other existing or future obligations or conditions which may affect all or any portion of the leased tract, it shall not relieve the Lessee of the obligation to pay any bonus due thereon to the Louisiana State Mineral Board, nor shall the Louisiana State Mineral Board be obligated to refund any consideration paid by the Lessee prior to such modification, cancellation, or abrogation, including, but not limited to, bonuses, rents and royalties.

NOTE: The Office of Mineral Resources will require a minimum bonus of \$130 per acre and a minimum royalty of 21%.

NOTE: The State of Louisiana does hereby reserve, and this lease shall be subject to, the imprescriptible right of surface use in the nature of a servitude in favor of the Department of Natural Resources and/or the Louisiana Department of Wildlife and Fisheries, including its Offices and Commissions, for the sole purpose of implementing, constructing, servicing and maintaining approved coastal zone management and/or restoration projects. Utilization of any and all rights derived under this lease by the mineral lessee, its agents, successors or assigns, shall not interfere with nor hinder the reasonable surface use by the Department of Natural Resources and/or the Louisiana Department of Wildlife and Fisheries, its Offices or Commissions, as hereinabove reserved.

Applicant: Christie G. O'Neal

80

Bik. 36

Bik. 35

Bik. 1

Bik. 57

Bik. 2

Bik. 58

TR 34558
452.16 ± ACS.
JULY, 2002

P. O. B.
X=2,797,608.05
Y= 477,257.33

GULF OF MEXICO

CHANDELEUR SOUND AREA
ADDITION, REV.

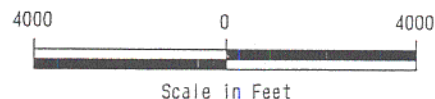
Bik. 11

Bik. 59

Bik. 6

CHANDELEUR SOUND AREA

St. Bernard Parish, Louisiana



TRACT 34559 - PORTION OF BLOCK 58, CHANDELEUR SOUND AREA, ADDITION, REVISED, St. Bernard Parish, Louisiana

That portion of Block 58, Chandeleur Sound Area, Addition, Revised, St. Bernard Parish, Louisiana, belonging to the State of Louisiana and not under mineral lease on July 10, 2002, described as follows: Beginning at a point on the West line of Block 58, Chandeleur Sound Area, Addition, Revised, having Coordinates of X = 2,797,608.05 and Y = 477,257.33; thence South 7,379.03 feet on the East line of said Block 58 to its Southeast corner having Coordinates of X = 2,797,608.05 and Y = 469,878.30; thence West 557.21 feet on the South line of said Block 58 to a point having Coordinates of X = 2,797,050.84 and Y = 469,878.30; thence Northwesterly on a straight line to a point having Coordinates of X = 2,796,202 and Y = 475,864; thence Northwesterly on a straight line to a point having Coordinates of X = 2,795,865.34 and Y = 477,257.32; thence East 1,742.71 feet to the point of beginning, containing approximately **185.25 acres**, as shown outlined on a plat on file in the Office of Mineral Resources, Department of Natural Resources, as provided by the applicant. All bearings, distances and coordinates are based on Louisiana Coordinate System of 1927 (South Zone).

NOTE: The above description of the tract nominated for lease has been provided exclusively by the party nominating the tract for lease.

Maps depicting the nominated tract, containing the bearings, distances and coordinates of the nominated tract based on the Louisiana Coordinate System of 1927, North or South Zone, as applicable, are available for public inspection and review at the offices of the Louisiana State Mineral Board from 10:00 a.m. to 3:00 p.m. Monday - Friday.

Any mineral lease selected from the nominated tract and awarded by the Louisiana State Mineral Board shall be without warranty of any kind, either express, implied, or statutory, including, but not limited to, the implied warranties or merchantability and fitness for a particular purpose. Should the mineral lease awarded by the Louisiana State Mineral Board be subsequently modified, cancelled or abrogated due to the existence of conflicting leases, operating agreements, private claims or other existing or future obligations or conditions which may affect all or any portion of the leased tract, it shall not relieve the Lessee of the obligation to pay any bonus due thereon to the Louisiana State Mineral Board, nor shall the Louisiana State Mineral Board be obligated to refund any consideration paid by the Lessee prior to such modification, cancellation, or abrogation, including, but not limited to, bonuses, rents and royalties.

NOTE: The Office of Mineral Resources will require a minimum bonus of \$130 per acre and a minimum royalty of 21%.

NOTE: The State of Louisiana does hereby reserve, and this lease shall be subject to, the imprescriptible right of surface use in the nature of a servitude in favor of the Department of Natural Resources and/or the Louisiana Department of Wildlife and Fisheries, including its Offices and Commissions, for the sole purpose of implementing, constructing, servicing and maintaining approved coastal zone management and/or restoration projects. Utilization of any and all rights derived under this lease by the mineral lessee, its agents, successors or assigns, shall not interfere with nor hinder the reasonable surface use by the Department of Natural Resources and/or the Louisiana Department of Wildlife and Fisheries, its Offices or Commissions, as hereinabove reserved.

Applicant: Christie G. O'Neal

Bik. 36

Bik. 35

Bik. 1

GULF OF MEXICO

CHANDELEUR SOUND AREA
ADDITION, REV.

Bik. 57

Bik. 58

CHANDELEUR AREA

Bik. 2

P. O. B.
X=2,797,608.05
Y=477,257.33

TR 34559
185.25 ± ACS.
JULY, 2002

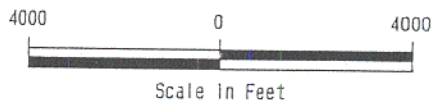
Bik. 11

Bik. 59

Bik. 6

CHANDELEUR SOUND AREA

St. Bernard Parish, Louisiana



TRACT 34560 - PORTION OF BLOCK 59, CHANDELEUR SOUND AREA, ADDITION, REVISED, St. Bernard Parish, Louisiana

That portion of Block 59, Chandeleur Sound Area, Addition, Revised, St. Bernard Parish, Louisiana, belonging to the State of Louisiana and not under mineral lease on July 10, 2002, described as follows: Beginning at a point on the East line of Block 59, Chandeleur Sound Area, Addition, Revised, having Coordinates of X = 2,797,608.05 and Y = 462,499.28; thence West 152.29 feet to a point having Coordinates of X = 2,797,455.76 and Y = 462,499.28; thence Northeasterly on a straight line to a point having Coordinates of X = 2,797,456 and Y = 463,898; thence Northwesterly on a straight line to a point having Coordinates of X = 2,797,209 and Y = 468,763; thence Northwesterly on a straight line to a point on the North line of said Block 59 having Coordinates of X = 2,797,050.84 and Y = 469,878.30; thence East 557.21 feet on the North line of said Block 59 to its Northeast corner having Coordinates of X = 2,797,608.05 and Y = 469,878.30; thence South 7,379.02 feet to the point of beginning, containing approximately **47.90 acres**, as shown outlined on a plat on file in the Office of Mineral Resources, Department of Natural Resources, as provided by the applicant. All bearings, distances and coordinates are based on Louisiana Coordinate System of 1927 (South Zone).

NOTE: The above description of the tract nominated for lease has been provided exclusively by the party nominating the tract for lease.

Maps depicting the nominated tract, containing the bearings, distances and coordinates of the nominated tract based on the Louisiana Coordinate System of 1927, North or South Zone, as applicable, are available for public inspection and review at the offices of the Louisiana State Mineral Board from 10:00 a.m. to 3:00 p.m. Monday - Friday.

Any mineral lease selected from the nominated tract and awarded by the Louisiana State Mineral Board shall be without warranty of any kind, either express, implied, or statutory, including, but not limited to, the implied warranties or merchantability and fitness for a particular purpose. Should the mineral lease awarded by the Louisiana State Mineral Board be subsequently modified, cancelled or abrogated due to the existence of conflicting leases, operating agreements, private claims or other existing or future obligations or conditions which may affect all or any portion of the leased tract, it shall not relieve the Lessee of the obligation to pay any bonus due thereon to the Louisiana State Mineral Board, nor shall the Louisiana State Mineral Board be obligated to refund any consideration paid by the Lessee prior to such modification, cancellation, or abrogation, including, but not limited to, bonuses, rents and royalties.

NOTE: The Office of Mineral Resources will require a minimum bonus of \$130 per acre and a minimum royalty of 21%.

NOTE: The State of Louisiana does hereby reserve, and this lease shall be subject to, the imprescriptible right of surface use in the nature of a servitude in favor of the Department of Natural Resources and/or the Louisiana Department of Wildlife and Fisheries, including its Offices and Commissions, for the sole purpose of implementing, constructing, servicing and maintaining approved coastal zone management and/or restoration projects. Utilization of any and all rights derived under this lease by the mineral lessee, its agents, successors or assigns, shall not interfere with nor hinder the reasonable surface use by the Department of Natural Resources and/or the Louisiana Department of Wildlife and Fisheries, its Offices or Commissions, as hereinabove reserved.

Applicant: Christie G. O'Neal

Blk. 57

Blk. 58

Blk. 2

GULF OF MEXICO
CHANDELEUR SOUND AREA
ADDITION, REV.

TR 34560
47.90 ± ACS.
JULY, 2002

Blk. 11

Blk. 59

Blk. 6

P. O. B.
X=2, 797, 608. 05
Y= 462, 499. 28

CHANDELEUR SOUND AREA

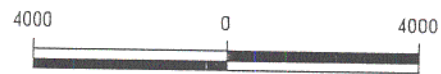
CHANDELEUR AREA

Blk. 12

Blk. 60

Blk. 7

St. Bernard Parish, Louisiana



Scale in Feet



TRACT 34561 - PORTION OF BLOCK 59, CHANDELEUR SOUND AREA, ADDITION, REVISED, St. Bernard Parish, Louisiana

That portion of Block 59, Chandeleur Sound Area, Addition, Revised, St. Bernard Parish, Louisiana, belonging to the State of Louisiana and not under mineral lease on July 10, 2002, described as follows: Beginning at a point on the East line of Block 59, Chandeleur Sound Area, Addition, Revised, having Coordinates of X = 2,797,608.05 and Y = 462,499.28; thence South 7,379.03 feet on the East line of said Block 59 to its Southeast corner having Coordinates of X = 2,797,608.05 and Y = 455,120.25; thence West 349.29 feet on the South line of said Block 59 to a point having Coordinates of X = 2,797,258.76 and Y = 455,120.25; thence Northeasterly on a straight line to a point having Coordinates of X = 2,797,455 and Y = 458,119; thence Northeasterly on a straight line to a point having Coordinates of X = 2,797,455.76 and Y = 462,499.28; thence East 152.29 feet to the point of beginning, containing approximately **32.64 acres**, as shown outlined on a plat on file in the Office of Mineral Resources, Department of Natural Resources, as provided by the applicant. All bearings, distances and coordinates are based on Louisiana Coordinate System of 1927 (South Zone).

NOTE: The above description of the tract nominated for lease has been provided exclusively by the party nominating the tract for lease.

Maps depicting the nominated tract, containing the bearings, distances and coordinates of the nominated tract based on the Louisiana Coordinate System of 1927, North or South Zone, as applicable, are available for public inspection and review at the offices of the Louisiana State Mineral Board from 10:00 a.m. to 3:00 p.m. Monday - Friday.

Any mineral lease selected from the nominated tract and awarded by the Louisiana State Mineral Board shall be without warranty of any kind, either express, implied, or statutory, including, but not limited to, the implied warranties or merchantability and fitness for a particular purpose. Should the mineral lease awarded by the Louisiana State Mineral Board be subsequently modified, cancelled or abrogated due to the existence of conflicting leases, operating agreements, private claims or other existing or future obligations or conditions which may affect all or any portion of the leased tract, it shall not relieve the Lessee of the obligation to pay any bonus due thereon to the Louisiana State Mineral Board, nor shall the Louisiana State Mineral Board be obligated to refund any consideration paid by the Lessee prior to such modification, cancellation, or abrogation, including, but not limited to, bonuses, rents and royalties.

NOTE: The Office of Mineral Resources will require a minimum bonus of \$130 per acre and a minimum royalty of 21%.

NOTE: The State of Louisiana does hereby reserve, and this lease shall be subject to, the imprescriptible right of surface use in the nature of a servitude in favor of the Department of Natural Resources and/or the Louisiana Department of Wildlife and Fisheries, including its Offices and Commissions, for the sole purpose of implementing, constructing, servicing and maintaining approved coastal zone management and/or restoration projects. Utilization of any and all rights derived under this lease by the mineral lessee, its agents, successors or assigns, shall not interfere with nor hinder the reasonable surface use by the Department of Natural Resources and/or the Louisiana Department of Wildlife and Fisheries, its Offices or Commissions, as hereinabove reserved.

Applicant: Christie G. O'Neal

89

Bik. 57

Bik. 58

Bik. 2

GULF OF MEXICO
CHANDELEUR SOUND AREA
ADDITION, REV.

Bik. 11

Bik. 59

Bik. 6

CHANDELEUR AREA

P. O. B.
X=2,797,608.05
Y= 462,499.28

TR 34561
32.64 ± ACS.
JULY, 2002

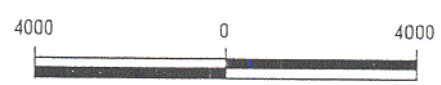
CHANDELEUR SOUND AREA

Bik. 12

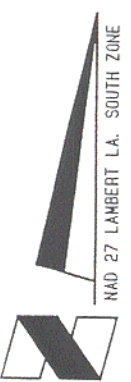
Bik. 60

Bik. 7

St. Bernard Parish, Louisiana



Scale in Feet



TRACT 34562 - PORTION OF BLOCK 60, CHANDELEUR SOUND AREA, ADDITION, REVISED, St. Bernard Parish, Louisiana

That portion of Block 60, Chandeleur Sound Area, Addition, Revised, St. Bernard Parish, Louisiana, belonging to the State of Louisiana and not under mineral lease on July 10, 2002, described as follows: Beginning at a point on the East line of Block 60, Chandeleur Sound Area, Addition, Revised, having Coordinates of X = 2,797,608.05 and Y = 447,741.22; thence West 1,088.97 feet to a point having Coordinates of X = 2,796,519.08 and Y = 447,741.22; thence Northeasterly on a straight line to a point having Coordinates of X = 2,797,067 and Y = 452,190; thence Northeasterly on a straight line to a point on the North line of said Block 60 having Coordinates of X = 2,797,258.76 and Y = 455,120.25; thence East 349.29 feet on the North line of said Block 60 to its Northeast corner having Coordinates of X = 2,797,608.05 and Y = 455,120.25; thence South 7,379.03 feet to the point of beginning, containing approximately **113.18 acres**, as shown outlined on a plat on file in the Office of Mineral Resources, Department of Natural Resources, as provided by the applicant. All bearings, distances and coordinates are based on Louisiana Coordinate System of 1927 (South Zone).

NOTE: The above description of the tract nominated for lease has been provided exclusively by the party nominating the tract for lease.

Maps depicting the nominated tract, containing the bearings, distances and coordinates of the nominated tract based on the Louisiana Coordinate System of 1927, North or South Zone, as applicable, are available for public inspection and review at the offices of the Louisiana State Mineral Board from 10:00 a.m. to 3:00 p.m. Monday - Friday.

Any mineral lease selected from the nominated tract and awarded by the Louisiana State Mineral Board shall be without warranty of any kind, either express, implied, or statutory, including, but not limited to, the implied warranties or merchantability and fitness for a particular purpose. Should the mineral lease awarded by the Louisiana State Mineral Board be subsequently modified, cancelled or abrogated due to the existence of conflicting leases, operating agreements, private claims or other existing or future obligations or conditions which may affect all or any portion of the leased tract, it shall not relieve the Lessee of the obligation to pay any bonus due thereon to the Louisiana State Mineral Board, nor shall the Louisiana State Mineral Board be obligated to refund any consideration paid by the Lessee prior to such modification, cancellation, or abrogation, including, but not limited to, bonuses, rents and royalties.

NOTE: The Office of Mineral Resources will require a minimum bonus of \$130 per acre and a minimum royalty of 21%.

NOTE: The State of Louisiana does hereby reserve, and this lease shall be subject to, the imprescriptible right of surface use in the nature of a servitude in favor of the Department of Natural Resources and/or the Louisiana Department of Wildlife and Fisheries, including its Offices and Commissions, for the sole purpose of implementing, constructing, servicing and maintaining approved coastal zone management and/or restoration projects. Utilization of any and all rights derived under this lease by the mineral lessee, its agents, successors or assigns, shall not interfere with nor hinder the reasonable surface use by the Department of Natural Resources and/or the Louisiana Department of Wildlife and Fisheries, its Offices or Commissions, as hereinabove reserved.

Applicant: Christie G. O'Neal

Bik. 11

Bik. 59

Bik. 6

GULF OF MEXICO
CHANDELEUR SOUND AREA
ADDITION, REV.

CHANDELEUR SOUND AREA

TR 34562
113.18 ± ACS.
JULY, 2002

Bik. 60

Bik. 7

P. O. B.
X=2,797,608.05
Y= 447,741.22

CHANDELEUR AREA

Bik. 12

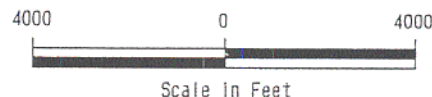
Bik. 33

Bik. 61

Bik. 15

NAD 27 LAMBERT LA. SOUTH ZONE

St. Bernard Parish, Louisiana



TRACT 34563 - PORTION OF BLOCK 60, CHANDELEUR SOUND AREA, ADDITION, REVISED, St. Bernard Parish, Louisiana

That portion of Block 60, Chandeleur Sound Area, Addition, Revised, St. Bernard Parish, Louisiana, belonging to the State of Louisiana and not under mineral lease on July 10, 2002, described as follows: Beginning at a point on the East line of Block 60, Chandeleur Sound Area, Addition, Revised, having Coordinates of X = 2,797,608.05 and Y = 447,741.22; thence South 7,379.02 feet on the East line of said Block 60 to its Southeast corner having Coordinates of X = 2,797,608.05 and Y = 440,362.20; thence West 2,107.36 feet on the South line of said Block 60 to a point having Coordinates of X = 2,795,500.69 and Y = 440,362.20; thence Northeasterly on a straight line to a point having Coordinates of X = 2,795,853 and Y = 442,333; thence Northeasterly on a straight line to a point having Coordinates X = 2,796,519.08 and Y = 447,741.22; thence East 1,088.97 feet to the point of beginning, containing approximately **263.92 acres**, as shown outlined on a plat on file in the Office of Mineral Resources, Department of Natural Resources, as provided by the applicant. All bearings, distances and coordinates are based on Louisiana Coordinate System of 1927 (South Zone).

NOTE: The above description of the tract nominated for lease has been provided exclusively by the party nominating the tract for lease.

Maps depicting the nominated tract, containing the bearings, distances and coordinates of the nominated tract based on the Louisiana Coordinate System of 1927, North or South Zone, as applicable, are available for public inspection and review at the offices of the Louisiana State Mineral Board from 10:00 a.m. to 3:00 p.m. Monday - Friday.

Any mineral lease selected from the nominated tract and awarded by the Louisiana State Mineral Board shall be without warranty of any kind, either express, implied, or statutory, including, but not limited to, the implied warranties or merchantability and fitness for a particular purpose. Should the mineral lease awarded by the Louisiana State Mineral Board be subsequently modified, cancelled or abrogated due to the existence of conflicting leases, operating agreements, private claims or other existing or future obligations or conditions which may affect all or any portion of the leased tract, it shall not relieve the Lessee of the obligation to pay any bonus due thereon to the Louisiana State Mineral Board, nor shall the Louisiana State Mineral Board be obligated to refund any consideration paid by the Lessee prior to such modification, cancellation, or abrogation, including, but not limited to, bonuses, rents and royalties.

NOTE: The Office of Mineral Resources will require a minimum bonus of \$130 per acre and a minimum royalty of 21%.

NOTE: The State of Louisiana does hereby reserve, and this lease shall be subject to, the imprescriptible right of surface use in the nature of a servitude in favor of the Department of Natural Resources and/or the Louisiana Department of Wildlife and Fisheries, including its Offices and Commissions, for the sole purpose of implementing, constructing, servicing and maintaining approved coastal zone management and/or restoration projects. Utilization of any and all rights derived under this lease by the mineral lessee, its agents, successors or assigns, shall not interfere with nor hinder the reasonable surface use by the Department of Natural Resources and/or the Louisiana Department of Wildlife and Fisheries, its Offices or Commissions, as hereinabove reserved.

Applicant: Christie G. O'Neal

CHANDELEUR SOUND AREA

Bik. 11

Bik. 59

Bik. 6

GULF OF MEXICO
CHANDELEUR SOUND AREA
ADDITION, REV.

Bik. 12

Bik. 60

CHANDELEUR AREA

Bik. 7

TR 34563
263.92 ± ACS.
JULY, 2002

P. O. B.
X=2,797,608.05
Y= 447,741.22

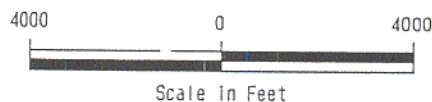
Bik. 33

Bik. 61

Bik. 15

NAD 27 LAMBERT LA. SOUTH ZONE

St. Bernard Parish, Louisiana



TRACT 34564 - PORTION OF BLOCK 61, CHANDELEUR SOUND AREA, ADDITION, REVISED, St. Bernard Parish, Louisiana

That portion of Block 61, Chandeleur Sound Area, Addition, Revised, St. Bernard Parish, Louisiana, belonging to the State of Louisiana and not under mineral lease on July 10, 2002, described as follows: Beginning at a point on the East line of Block 61, Chandeleur Sound Area, Addition, Revised, having Coordinates of X = 2,797,608.05 and Y = 432,983.17; thence West 3,641.37 feet to a point having Coordinates of X = 2,793,966.68 and Y = 432,983.17; thence Northeasterly on a straight line to a point having Coordinates of X = 2,794,722 and Y = 436,006; thence Northeasterly on a straight line to a point on the North line of said Block 61 having Coordinates of X = 2,795,500.69 and Y = 440,362.20; thence East 2,107.36 feet on the North line of said Block 61 to its Northeast corner having Coordinates of X = 2,797,608.05 and Y = 440,362.20; thence South 7,379.03 feet to the point of beginning, containing approximately **476.17 acres**, as shown outlined on a plat on file in the Office of Mineral Resources, Department of Natural Resources, as provided by the applicant. All bearings, distances and coordinates are based on Louisiana Coordinate System of 1927 (South Zone).

NOTE: The above description of the tract nominated for lease has been provided exclusively by the party nominating the tract for lease.

Maps depicting the nominated tract, containing the bearings, distances and coordinates of the nominated tract based on the Louisiana Coordinate System of 1927, North or South Zone, as applicable, are available for public inspection and review at the offices of the Louisiana State Mineral Board from 10:00 a.m. to 3:00 p.m. Monday - Friday.

Any mineral lease selected from the nominated tract and awarded by the Louisiana State Mineral Board shall be without warranty of any kind, either express, implied, or statutory, including, but not limited to, the implied warranties or merchantability and fitness for a particular purpose. Should the mineral lease awarded by the Louisiana State Mineral Board be subsequently modified, cancelled or abrogated due to the existence of conflicting leases, operating agreements, private claims or other existing or future obligations or conditions which may affect all or any portion of the leased tract, it shall not relieve the Lessee of the obligation to pay any bonus due thereon to the Louisiana State Mineral Board, nor shall the Louisiana State Mineral Board be obligated to refund any consideration paid by the Lessee prior to such modification, cancellation, or abrogation, including, but not limited to, bonuses, rents and royalties.

NOTE: The Office of Mineral Resources will require a minimum bonus of \$230 per acre and a minimum royalty of 23%.

NOTE: The State of Louisiana does hereby reserve, and this lease shall be subject to, the imprescriptible right of surface use in the nature of a servitude in favor of the Department of Natural Resources and/or the Louisiana Department of Wildlife and Fisheries, including its Offices and Commissions, for the sole purpose of implementing, constructing, servicing and maintaining approved coastal zone management and/or restoration projects. Utilization of any and all rights derived under this lease by the mineral lessee, its agents, successors or assigns, shall not interfere with nor hinder the reasonable surface use by the Department of Natural Resources and/or the Louisiana Department of Wildlife and Fisheries, its Offices or Commissions, as hereinabove reserved.

Applicant: Christie G. O'Neal

98

Blk. 12

Blk. 60

Blk. 7

GULF OF MEXICO

CHANDELEUR SOUND AREA
ADDITION, REV.

TR 34564
476.17 ± ACS.
JULY, 2002

CHANDELEUR AREA

Blk. 15

Blk. 33

Blk. 61

P. O. B.
X=2,797,608.05
Y= 432,983.17

CHANDELEUR SOUND AREA

Blk. 34

Blk. 62

Blk. 16

St. Bernard Parish, Louisiana



Scale In Feet



TRACT 34565 - PORTION OF BLOCK 61, CHANDELEUR SOUND AREA, ADDITION, REVISED, St. Bernard Parish, Louisiana

That portion of Block 61, Chandeleur Sound Area, Addition, Revised, St. Bernard Parish, Louisiana, belonging to the State of Louisiana and not under mineral lease on July 10, 2002, described as follows: Beginning at a point on the East line of Block 61, Chandeleur Sound Area, Addition, Revised, having Coordinates of X = 2,797,608.05 and Y = 432,983.17; thence South 7,379.03 feet on the East line of said Block 61 to its Southeast corner having Coordinates of X = 2,797,608.05 and Y = 425,604.15; thence West 5,743.67 feet on the South line of said Block 61 to a point having Coordinates of X = 2,791,864.38 and Y = 425,604.15; thence Northeasterly on a straight line to a point having Coordinates of X = 2,793,260 and Y = 430,155; thence Northeasterly on a straight line to a point having Coordinates X = 2,793,966.68 and Y = 432,983.17; thence East 3,641.37 feet to the point of beginning, containing approximately **786.52 acres**, as shown outlined on a plat on file in the Office of Mineral Resources, Department of Natural Resources, as provided by the applicant. All bearings, distances and coordinates are based on Louisiana Coordinate System of 1927 (South Zone).

NOTE: The above description of the tract nominated for lease has been provided exclusively by the party nominating the tract for lease.

Maps depicting the nominated tract, containing the bearings, distances and coordinates of the nominated tract based on the Louisiana Coordinate System of 1927, North or South Zone, as applicable, are available for public inspection and review at the offices of the Louisiana State Mineral Board from 10:00 a.m. to 3:00 p.m. Monday - Friday.

Any mineral lease selected from the nominated tract and awarded by the Louisiana State Mineral Board shall be without warranty of any kind, either express, implied, or statutory, including, but not limited to, the implied warranties or merchantability and fitness for a particular purpose. Should the mineral lease awarded by the Louisiana State Mineral Board be subsequently modified, cancelled or abrogated due to the existence of conflicting leases, operating agreements, private claims or other existing or future obligations or conditions which may affect all or any portion of the leased tract, it shall not relieve the Lessee of the obligation to pay any bonus due thereon to the Louisiana State Mineral Board, nor shall the Louisiana State Mineral Board be obligated to refund any consideration paid by the Lessee prior to such modification, cancellation, or abrogation, including, but not limited to, bonuses, rents and royalties.

NOTE: The Office of Mineral Resources will require a minimum bonus of \$230 per acre and a minimum royalty of 23%.

NOTE: The State of Louisiana does hereby reserve, and this lease shall be subject to, the imprescriptible right of surface use in the nature of a servitude in favor of the Department of Natural Resources and/or the Louisiana Department of Wildlife and Fisheries, including its Offices and Commissions, for the sole purpose of implementing, constructing, servicing and maintaining approved coastal zone management and/or restoration projects. Utilization of any and all rights derived under this lease by the mineral lessee, its agents, successors or assigns, shall not interfere with nor hinder the reasonable surface use by the Department of Natural Resources and/or the Louisiana Department of Wildlife and Fisheries, its Offices or Commissions, as hereinabove reserved.

Applicant: Christie G. O'Neal

Bik. 12

Bik. 60

Bik. 7

GULF OF MEXICO

CHANDELEUR SOUND AREA
ADDITION, REV.

Bik. 33

Bik. 61

Bik. 15

TR 34565
786.52 ± ACS.
JULY, 2002

P. O. B.
X=2,797,608.05
Y= 432,983.17

CHANDELEUR SOUND AREA

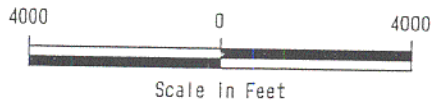
CHANDELEUR AREA

Bik. 34

Bik. 62

Bik. 16

St. Bernard Parish, Louisiana



TRACT 34566 - PORTION OF BLOCK 1, CHANDELEUR AREA, St. Bernard Parish, Louisiana

That portion of Block 1, Chandeleur Area, St. Bernard Parish, Louisiana, belonging to the State of Louisiana and not under mineral lease on July 10, 2002, described as follows: Beginning at a point on the West line of Block 1, Chandeleur Area, having Coordinates of X = 2,797,608.05 and Y = 492,015.38; thence North 7,379.03 feet on the West line of said Block 1 to its Northwest corner having Coordinates of X = 2,797,608.05 and Y = 499,394.40; thence East 10,761.28 feet on the North line of said Block 1 to a point having Coordinates of X = 2,808,369.33 and Y = 499,394.40; thence Southeasterly on a straight line to a point having Coordinates X = 2,808,653 and Y = 498,677; thence Southeasterly on an arc having a radius of 18,240.60 feet and a center at X = 2,791,690 and Y = 491,970 to a point having Coordinates X = 2,809,151 and Y = 497,245; thence Southeasterly on a straight line to a point having Coordinates of X = 2,810,730.90 and Y = 492,015.38; thence West 13,122.85 feet to the point of beginning, containing approximately **2,031.85 acres**, as shown outlined on a plat on file in the Office of Mineral Resources, Department of Natural Resources, as provided by the applicant, **LESS AND EXCEPT** that portion thereof, if any, which is more than three nautical miles from the coast line as determined by the Report of the Special Master in the litigation in the Supreme Court of the United States styled United States v. State of Louisiana et al No. 9 Original, said three mile line as set out in the June, 1975, decree of the Supreme Court. All bearings, distances and coordinates are based on Louisiana Coordinate System of 1927 (South Zone).

NOTE: The above description of the tract nominated for lease has been provided exclusively by the party nominating the tract for lease.

Maps depicting the nominated tract, containing the bearings, distances and coordinates of the nominated tract based on the Louisiana Coordinate System of 1927, North or South Zone, as applicable, are available for public inspection and review at the offices of the Louisiana State Mineral Board from 10:00 a.m. to 3:00 p.m. Monday - Friday.

Any mineral lease selected from the nominated tract and awarded by the Louisiana State Mineral Board shall be without warranty of any kind, either express, implied, or statutory, including, but not limited to, the implied warranties or merchantability and fitness for a particular purpose. Should the mineral lease awarded by the Louisiana State Mineral Board be subsequently modified, cancelled or abrogated due to the existence of conflicting leases, operating agreements, private claims or other existing or future obligations or conditions which may affect all or any portion of the leased tract, it shall not relieve the Lessee of the obligation to pay any bonus due thereon to the Louisiana State Mineral Board, nor shall the Louisiana State Mineral Board be obligated to refund any consideration paid by the Lessee prior to such modification,

cancellation, or abrogation, including, but not limited to, bonuses, rents and royalties.

NOTE: The Office of Mineral Resources will require a minimum bonus of \$130 per acre and a minimum royalty of 21%.

NOTE: The State of Louisiana does hereby reserve, and this lease shall be subject to, the imprescriptible right of surface use in the nature of a servitude in favor of the Department of Natural Resources and/or the Louisiana Department of Wildlife and Fisheries, including its Offices and Commissions, for the sole purpose of implementing, constructing, servicing and maintaining approved coastal zone management and/or restoration projects. Utilization of any and all rights derived under this lease by the mineral lessee, its agents, successors or assigns, shall not interfere with nor hinder the reasonable surface use by the Department of Natural Resources and/or the Louisiana Department of Wildlife and Fisheries, its Offices or Commissions, as hereinabove reserved.

Applicant: Christie G. O'Neal

Bik. 34

TR 34566
2,031.85 ± ACS.
JULY, 2002

P. O. B.
X=2,797,608.05
Y= 492,015.38

Bik. 35

Bik. 1

CHANDELEUR SOUND AREA
ADDITION, REV.

CHANDELEUR AREA

GULF OF MEXICO

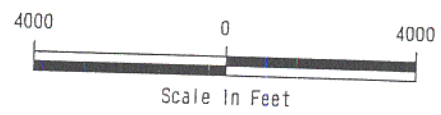
LA
USA

Bik. 58

Bik. 2

Bik. 3

St. Bernard Parish, Louisiana



NAD 27 LAMBERT LA. SOUTH ZONE



TRACT 34567 - PORTION OF BLOCK 1, CHANDELEUR AREA, St. Bernard Parish, Louisiana

That portion of Block 1, Chandeleur Area, St. Bernard Parish, Louisiana, belonging to the State of Louisiana and not under mineral lease on July 10, 2002, described as follows: Beginning at a point on the West line of Block 1, Chandeleur Area having Coordinates of X = 2,797,608.05 and Y = 492,015.38; thence East 13,122.85 feet to a point having Coordinates of X = 2,810,730.90 and Y = 492,015.38; thence Southeasterly on a straight line to a point having Coordinates of X = 2,812,250 and Y = 486,987; thence Southeasterly on an arc having a radius of 18,240.60 feet and a center at X = 2,794,789 and Y = 481,712 to a point on the East line of said Block 1 having Coordinates of X = 2,812,366.10 and Y = 486,585.91; thence South 1,949.56 feet on the East line of said Block 1 to its Southeast corner having Coordinates of X = 2,812,366.10 and Y = 484,636.35; thence West 14,758.05 feet on the South line of said Block 1 to its Southwest corner having Coordinates X = 2,797,608.05 and Y = 484,636.35; thence North 7,379.03 feet to the point of beginning, containing approximately **2,398.39 acres**, as shown outlined on a plat on file in the Office of Mineral Resources, Department of Natural Resources, as provided by the applicant, **LESS AND EXCEPT** that portion thereof, if any, which is more than three nautical miles from the coast line as determined by the Report of the Special Master in the litigation in the Supreme Court of the United States styled United States v. State of Louisiana et al No. 9 Original, said three mile line as set out in the June, 1975, decree of the Supreme Court. All bearings, distances and coordinates are based on Louisiana Coordinate System of 1927 (South Zone).

NOTE: The above description of the tract nominated for lease has been provided exclusively by the party nominating the tract for lease.

Maps depicting the nominated tract, containing the bearings, distances and coordinates of the nominated tract based on the Louisiana Coordinate System of 1927, North or South Zone, as applicable, are available for public inspection and review at the offices of the Louisiana State Mineral Board from 10:00 a.m. to 3:00 p.m. Monday - Friday.

Any mineral lease selected from the nominated tract and awarded by the Louisiana State Mineral Board shall be without warranty of any kind, either express, implied, or statutory, including, but not limited to, the implied warranties or merchantability and fitness for a particular purpose. Should the mineral lease awarded by the Louisiana State Mineral Board be subsequently modified, cancelled or abrogated due to the existence of conflicting leases, operating agreements, private claims or other existing or future obligations or conditions which may affect all or any portion of the leased tract, it shall not relieve the Lessee of the obligation to pay any bonus due thereon to the Louisiana State Mineral Board, nor shall the Louisiana State Mineral Board be obligated to refund

any consideration paid by the Lessee prior to such modification, cancellation, or abrogation, including, but not limited to, bonuses, rents and royalties.

NOTE: The Office of Mineral Resources will require a minimum bonus of \$130 per acre and a minimum royalty of 21%.

NOTE: The State of Louisiana does hereby reserve, and this lease shall be subject to, the imprescriptible right of surface use in the nature of a servitude in favor of the Department of Natural Resources and/or the Louisiana Department of Wildlife and Fisheries, including its Offices and Commissions, for the sole purpose of implementing, constructing, servicing and maintaining approved coastal zone management and/or restoration projects. Utilization of any and all rights derived under this lease by the mineral lessee, its agents, successors or assigns, shall not interfere with nor hinder the reasonable surface use by the Department of Natural Resources and/or the Louisiana Department of Wildlife and Fisheries, its Offices or Commissions, as hereinabove reserved.

Applicant: Christie G. O'Neal

Blk. 34

167

P. O. B.
X=2,797,608.05
Y= 492,015.38

Blk. 35

Blk. 1

TR 34567
2,398.39 ± ACS.
JULY, 2002

GULF OF MEXICO

CHANDELEUR SOUND AREA
ADDITION, REV.

CHANDELEUR AREA

LA
USA

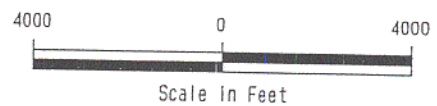
Blk. 58

Blk. 2

Blk. 3

NAD 27 LAMBERT LA. SOUTH ZONE

St. Bernard Parish, Louisiana



TRACT 34568 - PORTION OF BLOCK 2, CHANDELEUR AREA, St. Bernard Parish, Louisiana

That portion of Block 2, Chandeleur Area, St. Bernard Parish, Louisiana, belonging to the State of Louisiana and not under mineral lease on July 10, 2002, described as follows: Beginning at a point on the West line of Block 2, Chandeleur Area having Coordinates of X = 2,797,608.05 and Y = 477,257.33; thence North 7,379.02 feet on the West line of said Block 2 to its Northwest corner having Coordinates of X = 2,797,608.05 and Y = 484,636.35; thence East 14,758.05 feet on the North line of said Block 2 to its Northeast corner having Coordinates of X = 2,812,366.10 and Y = 484,636.35; thence South 7,379.02 feet on the East line of said Block 2 to a point having Coordinates of X = 2,812,366.10 and Y = 477,257.33; thence West 14,758.05 feet to the point of beginning, containing approximately **2,500.00 acres**, as shown outlined on a plat on file in the Office of Mineral Resources, Department of Natural Resources, as provided by the applicant. All bearings, distances and coordinates are based on Louisiana Coordinate System of 1927 (South Zone).

NOTE: The above description of the tract nominated for lease has been provided exclusively by the party nominating the tract for lease.

Maps depicting the nominated tract, containing the bearings, distances and coordinates of the nominated tract based on the Louisiana Coordinate System of 1927, North or South Zone, as applicable, are available for public inspection and review at the offices of the Louisiana State Mineral Board from 10:00 a.m. to 3:00 p.m. Monday - Friday.

Any mineral lease selected from the nominated tract and awarded by the Louisiana State Mineral Board shall be without warranty of any kind, either express, implied, or statutory, including, but not limited to, the implied warranties or merchantability and fitness for a particular purpose. Should the mineral lease awarded by the Louisiana State Mineral Board be subsequently modified, cancelled or abrogated due to the existence of conflicting leases, operating agreements, private claims or other existing or future obligations or conditions which may affect all or any portion of the leased tract, it shall not relieve the Lessee of the obligation to pay any bonus due thereon to the Louisiana State Mineral Board, nor shall the Louisiana State Mineral Board be obligated to refund any consideration paid by the Lessee prior to such modification, cancellation, or abrogation, including, but not limited to, bonuses, rents and royalties.

NOTE: The Office of Mineral Resources will require a minimum bonus of \$130 per acre and a minimum royalty of 21%.

NOTE: The State of Louisiana does hereby reserve, and this lease shall be subject to, the imprescriptible right of surface use in the nature of a

servitude in favor of the Department of Natural Resources and/or the Louisiana Department of Wildlife and Fisheries, including its Offices and Commissions, for the sole purpose of implementing, constructing, servicing and maintaining approved coastal zone management and/or restoration projects. Utilization of any and all rights derived under this lease by the mineral lessee, its agents, successors or assigns, shall not interfere with nor hinder the reasonable surface use by the Department of Natural Resources and/or the Louisiana Department of Wildlife and Fisheries, its Offices or Commissions, as hereinabove reserved.

Applicant: Christie G. O'Neal

110

CHANDELEUR SOUND AREA
ADDITION, REV.

CHANDELEUR AREA

Bik. 35

Bik. 1

TR 34568
2,500.00 ± ACS.
JULY, 2002

GULF OF MEXICO

Bik. 58

P. O. B.
X=2,797,608.05
Y= 477,257.33

Bik. 2

Bik. 3

USA
LA

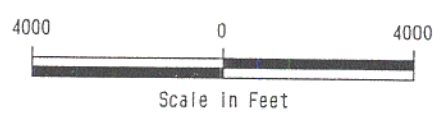
Bik. 6

Bik. 5

Bik. 59

NAD 27 LAMBERT LA. SOUTH ZONE

St. Bernard Parish, Louisiana



TRACT 34569 - PORTION OF BLOCK 2, CHANDELEUR AREA, St. Bernard Parish, Louisiana

That portion of Block 2, Chandeleur Area, St. Bernard Parish, Louisiana, belonging to the State of Louisiana and not under mineral lease on July 10, 2002, described as follows: Beginning at a point on the West line of Block 2, Chandeleur Area having Coordinates of X = 2,797,608.05 and Y = 477,257.33; thence East 14,758.05 feet to a point on the East line of said Block 2 having Coordinates of X = 2,812,366.10 and Y = 477,257.33; thence South 7,379.03 feet on the East line of said Block 2 to its Southeast corner having Coordinates of X = 2,812,366.10 and Y = 469,878.30; thence West 14,758.05 feet on the South line of said Block 2 to its Southwest corner having Coordinates of X = 2,797,608.05 and Y = 469,878.30; thence North 7,379.03 feet to the point of beginning, containing approximately **2,500.00 acres**, as shown outlined on a plat on file in the Office of Mineral Resources, Department of Natural Resources, as provided by the applicant. All bearings, distances and coordinates are based on Louisiana Coordinate System of 1927 (South Zone).

NOTE: The above description of the tract nominated for lease has been provided exclusively by the party nominating the tract for lease.

Maps depicting the nominated tract, containing the bearings, distances and coordinates of the nominated tract based on the Louisiana Coordinate System of 1927, North or South Zone, as applicable, are available for public inspection and review at the offices of the Louisiana State Mineral Board from 10:00 a.m. to 3:00 p.m. Monday - Friday.

Any mineral lease selected from the nominated tract and awarded by the Louisiana State Mineral Board shall be without warranty of any kind, either express, implied, or statutory, including, but not limited to, the implied warranties or merchantability and fitness for a particular purpose. Should the mineral lease awarded by the Louisiana State Mineral Board be subsequently modified, cancelled or abrogated due to the existence of conflicting leases, operating agreements, private claims or other existing or future obligations or conditions which may affect all or any portion of the leased tract, it shall not relieve the Lessee of the obligation to pay any bonus due thereon to the Louisiana State Mineral Board, nor shall the Louisiana State Mineral Board be obligated to refund any consideration paid by the Lessee prior to such modification, cancellation, or abrogation, including, but not limited to, bonuses, rents and royalties.

NOTE: The Office of Mineral Resources will require a minimum bonus of \$130 per acre and a minimum royalty of 21%.

NOTE: The State of Louisiana does hereby reserve, and this lease shall be subject to, the imprescriptible right of surface use in the nature of a

servitude in favor of the Department of Natural Resources and/or the Louisiana Department of Wildlife and Fisheries, including its Offices and Commissions, for the sole purpose of implementing, constructing, servicing and maintaining approved coastal zone management and/or restoration projects. Utilization of any and all rights derived under this lease by the mineral lessee, its agents, successors or assigns, shall not interfere with nor hinder the reasonable surface use by the Department of Natural Resources and/or the Louisiana Department of Wildlife and Fisheries, its Offices or Commissions, as hereinabove reserved.

Applicant: Christie G. O'Neal

Bik. 35

Bik. 1

113

CHANDELEUR AREA

P. O. B.
X=2,797,608.05
Y= 477,257.33

GULF OF MEXICO

Bik. 58

Bik. 2

Bik. 3

TR 34569
2,500.00 ± ACS.
JULY, 2002

LA
USA

Bik. 59

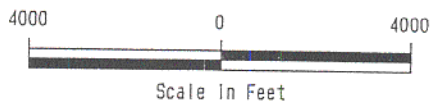
CHANDELEUR SOUND AREA
ADDITION, REV.

Bik. 6

Bik. 5

NAD 27 LAMBERT LA. SOUTH ZONE

St. Bernard Parish, Louisiana



TRACT 34570 - PORTION OF BLOCK 6, CHANDELEUR AREA, St. Bernard Parish, Louisiana

That portion of Block 6, Chandeleur Area, St. Bernard Parish, Louisiana, belonging to the State of Louisiana and not under mineral lease on July 10, 2002, described as follows: Beginning at a point on the West line of Block 6, Chandeleur Area, having Coordinates of X = 2,797,608.05 and Y = 462,499.28; thence North 7,379.02 feet on the West line of said Block 6 to its Northwest corner having Coordinates of X = 2,797,608.05 and Y = 469,878.30; thence East 14,758.05 feet on the North line of said Block 6 to its Northeast corner having Coordinates of X = 2,812,366.10 and Y = 469,878.30; thence South 7,379.02 feet on the East line of said Block 6 to a point having Coordinates of X = 2,812,366.10 and Y = 462,499.28; thence West 14,758.05 feet to the point of beginning, containing approximately **2,500.00 acres**, as shown outlined on a plat on file in the Office of Mineral Resources, Department of Natural Resources, as provided by the applicant. All bearings, distances and coordinates are based on Louisiana Coordinate System of 1927 (South Zone).

NOTE: The above description of the tract nominated for lease has been provided exclusively by the party nominating the tract for lease.

Maps depicting the nominated tract, containing the bearings, distances and coordinates of the nominated tract based on the Louisiana Coordinate System of 1927, North or South Zone, as applicable, are available for public inspection and review at the offices of the Louisiana State Mineral Board from 10:00 a.m. to 3:00 p.m. Monday - Friday.

Any mineral lease selected from the nominated tract and awarded by the Louisiana State Mineral Board shall be without warranty of any kind, either express, implied, or statutory, including, but not limited to, the implied warranties or merchantability and fitness for a particular purpose. Should the mineral lease awarded by the Louisiana State Mineral Board be subsequently modified, cancelled or abrogated due to the existence of conflicting leases, operating agreements, private claims or other existing or future obligations or conditions which may affect all or any portion of the leased tract, it shall not relieve the Lessee of the obligation to pay any bonus due thereon to the Louisiana State Mineral Board, nor shall the Louisiana State Mineral Board be obligated to refund any consideration paid by the Lessee prior to such modification, cancellation, or abrogation, including, but not limited to, bonuses, rents and royalties.

NOTE: The Office of Mineral Resources will require a minimum bonus of \$130 per acre and a minimum royalty of 21%.

NOTE: The State of Louisiana does hereby reserve, and this lease shall be subject to, the imprescriptible right of surface use in the nature of a

servitude in favor of the Department of Natural Resources and/or the Louisiana Department of Wildlife and Fisheries, including its Offices and Commissions, for the sole purpose of implementing, constructing, servicing and maintaining approved coastal zone management and/or restoration projects. Utilization of any and all rights derived under this lease by the mineral lessee, its agents, successors or assigns, shall not interfere with nor hinder the reasonable surface use by the Department of Natural Resources and/or the Louisiana Department of Wildlife and Fisheries, its Offices or Commissions, as hereinabove reserved.

Applicant: Christie G. O'Neal

Bik. 58

Bik. 2

116
Bik. 3

GULF OF MEXICO

TR 34570
2,500.00 ± ACS.
JULY, 2002

Bik. 59

P. O. B.
X=2,797,608.05
Y= 462,499.28

LA
USA

Bik. 5

Bik. 6

Bik. 60

CHANDELEUR SOUND AREA
ADDITION, REV.

CHANDELEUR AREA

Bik. 7

Bik. 8

NAD 27 LAMBERT LA. SOUTH ZONE

St. Bernard Parish, Louisiana

4000 0 4000

Scale in Feet

TRACT 34571 - PORTION OF BLOCK 6, CHANDELEUR AREA, St. Bernard Parish, Louisiana

That portion of Block 6, Chandeleur Area, St. Bernard Parish, Louisiana, belonging to the State of Louisiana and not under mineral lease on July 10, 2002, described as follows: Beginning at a point on the West line of Block 6, Chandeleur Area, having Coordinates of X = 2,797,608.05 and Y = 462,499.28; thence East 14,758.05 feet to a point on the East line of said Block 6 having Coordinates of X = 2,812,366.10 and Y = 462,499.28; thence South 7,379.03 feet on the East line of said Block 6 to its Southeast corner having Coordinates of X = 2,812,366.10 and Y = 455,120.25; thence West 14,758.05 feet on the South line of said Block 6 to its Southwest corner having Coordinates of X = 2,797,608.05 and Y = 455,120.25; thence North 7,379.03 feet to the point of beginning, containing approximately **2,500.00 acres**, as shown outlined on a plat on file in the Office of Mineral Resources, Department of Natural Resources, as provided by the applicant. All bearings, distances and coordinates are based on Louisiana Coordinate System of 1927 (South Zone).

NOTE: The above description of the tract nominated for lease has been provided exclusively by the party nominating the tract for lease.

Maps depicting the nominated tract, containing the bearings, distances and coordinates of the nominated tract based on the Louisiana Coordinate System of 1927, North or South Zone, as applicable, are available for public inspection and review at the offices of the Louisiana State Mineral Board from 10:00 a.m. to 3:00 p.m. Monday - Friday.

Any mineral lease selected from the nominated tract and awarded by the Louisiana State Mineral Board shall be without warranty of any kind, either express, implied, or statutory, including, but not limited to, the implied warranties or merchantability and fitness for a particular purpose. Should the mineral lease awarded by the Louisiana State Mineral Board be subsequently modified, cancelled or abrogated due to the existence of conflicting leases, operating agreements, private claims or other existing or future obligations or conditions which may affect all or any portion of the leased tract, it shall not relieve the Lessee of the obligation to pay any bonus due thereon to the Louisiana State Mineral Board, nor shall the Louisiana State Mineral Board be obligated to refund any consideration paid by the Lessee prior to such modification, cancellation, or abrogation, including, but not limited to, bonuses, rents and royalties.

NOTE: The Office of Mineral Resources will require a minimum bonus of \$130 per acre and a minimum royalty of 21%.

NOTE: The State of Louisiana does hereby reserve, and this lease shall be subject to, the imprescriptible right of surface use in the nature of a

servitude in favor of the Department of Natural Resources and/or the Louisiana Department of Wildlife and Fisheries, including its Offices and Commissions, for the sole purpose of implementing, constructing, servicing and maintaining approved coastal zone management and/or restoration projects. Utilization of any and all rights derived under this lease by the mineral lessee, its agents, successors or assigns, shall not interfere with nor hinder the reasonable surface use by the Department of Natural Resources and/or the Louisiana Department of Wildlife and Fisheries, its Offices or Commissions, as hereinabove reserved.

Applicant: Christie G. O'Neal

Bik. 58

Bik. 2

119
Bik. 3

GULF OF MEXICO

Bik. 59

P. O. B.
X=2,797,608.05
Y= 462,499.28

Bik. 6

TR 34571
2,500.00 ± ACS.
JULY, 2002

LA
USA

Bik. 5

Bik. 60

Bik. 7

Bik. 8

CHANDELEUR SOUND AREA

ADDITION, REV.

CHANDELEUR AREA

NAD 27 LAMBERT LA. SOUTH ZONE

St. Bernard Parish, Louisiana

4000 0 4000

Scale In Feet

TRACT 34572 - PORTION OF BLOCK 7, CHANDELEUR AREA, St. Bernard Parish, Louisiana

That portion of Block 7, Chandeleur Area, St. Bernard Parish, Louisiana, belonging to the State of Louisiana and not under mineral lease on July 10, 2002, described as follows: Beginning at a point on the West line of Block 7, Chandeleur Area, having Coordinates of X = 2,797,608.05 and Y = 447,741.22; thence North 7,379.03 feet on the West line of said Block 7 to its Northwest corner having Coordinates of X = 2,797,608.05 and Y = 455,120.25; thence East 14,758.05 feet on the North line of said Block 7 to its Northeast corner having Coordinates of X = 2,812,366.10 and Y = 455,120.25; thence South 7,379.03 feet on the East line of said Block 7 to a point having Coordinates of X = 2,812,366.10 and Y = 447,741.22; thence West 14,758.05 feet to the point of beginning, containing approximately **2,500.00 acres**, as shown outlined on a plat on file in the Office of Mineral Resources, Department of Natural Resources, as provided by the applicant. All bearings, distances and coordinates are based on Louisiana Coordinate System of 1927 (South Zone).

NOTE: The above description of the tract nominated for lease has been provided exclusively by the party nominating the tract for lease.

Maps depicting the nominated tract, containing the bearings, distances and coordinates of the nominated tract based on the Louisiana Coordinate System of 1927, North or South Zone, as applicable, are available for public inspection and review at the offices of the Louisiana State Mineral Board from 10:00 a.m. to 3:00 p.m. Monday - Friday.

Any mineral lease selected from the nominated tract and awarded by the Louisiana State Mineral Board shall be without warranty of any kind, either express, implied, or statutory, including, but not limited to, the implied warranties or merchantability and fitness for a particular purpose. Should the mineral lease awarded by the Louisiana State Mineral Board be subsequently modified, cancelled or abrogated due to the existence of conflicting leases, operating agreements, private claims or other existing or future obligations or conditions which may affect all or any portion of the leased tract, it shall not relieve the Lessee of the obligation to pay any bonus due thereon to the Louisiana State Mineral Board, nor shall the Louisiana State Mineral Board be obligated to refund any consideration paid by the Lessee prior to such modification, cancellation, or abrogation, including, but not limited to, bonuses, rents and royalties.

NOTE: The Office of Mineral Resources will require a minimum bonus of \$130 per acre and a minimum royalty of 21%.

NOTE: The State of Louisiana does hereby reserve, and this lease shall be subject to, the imprescriptible right of surface use in the nature of a

servitude in favor of the Department of Natural Resources and/or the Louisiana Department of Wildlife and Fisheries, including its Offices and Commissions, for the sole purpose of implementing, constructing, servicing and maintaining approved coastal zone management and/or restoration projects. Utilization of any and all rights derived under this lease by the mineral lessee, its agents, successors or assigns, shall not interfere with nor hinder the reasonable surface use by the Department of Natural Resources and/or the Louisiana Department of Wildlife and Fisheries, its Offices or Commissions, as hereinabove reserved.

Applicant: Christie G. O'Neal

Bik. 59

Bik. 6

Bik. 5

GULF OF MEXICO

TR 34572
2,500.00 ± ACS.
JULY, 2002

Bik. 60

P. O. B.
X=2,797,608.05
Y= 447,741.22

Bik. 7

LA
USA

Bik. 8

CHANDELEUR SOUND AREA
ADDITION, REV.

CHANDELEUR AREA

Bik. 61

Bik. 15

Bik. 14

NAD 27 LAMBERT LA. SOUTH ZONE

St. Bernard Parish, Louisiana

4000 0 4000

Scale In Feet

TRACT 34573 - PORTION OF BLOCK 7, CHANDELEUR AREA, St. Bernard Parish, Louisiana

That portion of Block 7, Chandeleur Area, St. Bernard Parish, Louisiana, belonging to the State of Louisiana and not under mineral lease on July 10, 2002, described as follows: Beginning at a point on the West line of Block 7, Chandeleur Area, having Coordinates of X = 2,797,608.05 and Y = 447,741.22; thence East 14,758.05 feet to a point on the East line of said Block 7 having Coordinates of X = 2,812,366.10 and Y = 447,741.22; thence South 7,379.02 feet on the East line of said Block 7 to its Southeast corner having Coordinates of X = 2,812,366.10 and Y = 440,362.20; thence West 14,758.05 feet on the South line of said Block 7 to its Southwest corner having Coordinates of X = 2,797,608.05 and Y = 440,362.20; thence North 7,379.02 feet to the point of beginning, containing approximately **2,500.00 acres**, as shown outlined on a plat on file in the Office of Mineral Resources, Department of Natural Resources, as provided by the applicant. All bearings, distances and coordinates are based on Louisiana Coordinate System of 1927 (South Zone).

NOTE: The above description of the tract nominated for lease has been provided exclusively by the party nominating the tract for lease.

Maps depicting the nominated tract, containing the bearings, distances and coordinates of the nominated tract based on the Louisiana Coordinate System of 1927, North or South Zone, as applicable, are available for public inspection and review at the offices of the Louisiana State Mineral Board from 10:00 a.m. to 3:00 p.m. Monday - Friday.

Any mineral lease selected from the nominated tract and awarded by the Louisiana State Mineral Board shall be without warranty of any kind, either express, implied, or statutory, including, but not limited to, the implied warranties or merchantability and fitness for a particular purpose. Should the mineral lease awarded by the Louisiana State Mineral Board be subsequently modified, cancelled or abrogated due to the existence of conflicting leases, operating agreements, private claims or other existing or future obligations or conditions which may affect all or any portion of the leased tract, it shall not relieve the Lessee of the obligation to pay any bonus due thereon to the Louisiana State Mineral Board, nor shall the Louisiana State Mineral Board be obligated to refund any consideration paid by the Lessee prior to such modification, cancellation, or abrogation, including, but not limited to, bonuses, rents and royalties.

NOTE: The Office of Mineral Resources will require a minimum bonus of \$130 per acre and a minimum royalty of 21%.

NOTE: The State of Louisiana does hereby reserve, and this lease shall be subject to, the imprescriptible right of surface use in the nature of a

servitude in favor of the Department of Natural Resources and/or the Louisiana Department of Wildlife and Fisheries, including its Offices and Commissions, for the sole purpose of implementing, constructing, servicing and maintaining approved coastal zone management and/or restoration projects. Utilization of any and all rights derived under this lease by the mineral lessee, its agents, successors or assigns, shall not interfere with nor hinder the reasonable surface use by the Department of Natural Resources and/or the Louisiana Department of Wildlife and Fisheries, its Offices or Commissions, as hereinabove reserved.

Applicant: Christie G. O'Neal

125

Bik. 59

GULF OF MEXICO

Bik. 6

Bik. 5

P. O. B.
X=2,797,608.05
Y= 447,741.22

Bik. 7

LA
USA

Bik. 8

Bik. 60

TR 34573
2,500.00 ± ACS.
JULY, 2002

CHANDELEUR SOUND AREA
ADDITION, REV.

CHANDELEUR AREA

Bik. 15

Bik. 14

Bik. 61

NAD 27 LAMBERT LA. SOUTH ZONE

St. Bernard Parish, Louisiana

