

**TRACT 34628 - Orleans and St. Bernard Parishes, Louisiana**

All of the lands now or formerly constituting the beds and bottoms of all water bodies of every nature and description and all islands and other lands formed by accretion or reliction, except tax lands, owned by and not under mineral lease from the State of Louisiana on July 10, 2002, situated in Orleans and St. Bernard Parishes, Louisiana, within the following described boundaries: Beginning at a point having Coordinates of X = 2,495,217.80 and Y = 498,821.63; thence North 7,379.02 feet to a point having Coordinates of X = 2,495,217.80 and Y = 506,200.65; thence East 14,758.06 feet to a point having Coordinates of X = 2,509,975.86 and Y = 506,200.65; thence South 4,314.58 feet to the Northwest corner of State Lease No. 17073 having Coordinates of X = 2,509,975.86 and Y = 501,886.07; thence South 3,064.44 feet along the West line of said State Lease No. 17073 to a point having Coordinates of X = 2,509,975.86 and Y = 498,821.63; thence West 14,758.06 feet to the point of beginning, containing approximately **949 acres**, as shown outlined on a plat on file in the Office of Mineral Resources, Department of Natural Resources, as provided by the applicant. All bearings, distances and coordinates are based on Louisiana Coordinate System of 1927 (South Zone).

NOTE: The above description of the tract nominated for lease has been provided exclusively by the party nominating the tract for lease.

Maps depicting the nominated tract, containing the bearings, distances and coordinates of the nominated tract based on the Louisiana Coordinate System of 1927, North or South Zone, as applicable, are available for public inspection and review at the offices of the Louisiana State Mineral Board from 10:00 a.m. to 3:00 p.m. Monday - Friday.

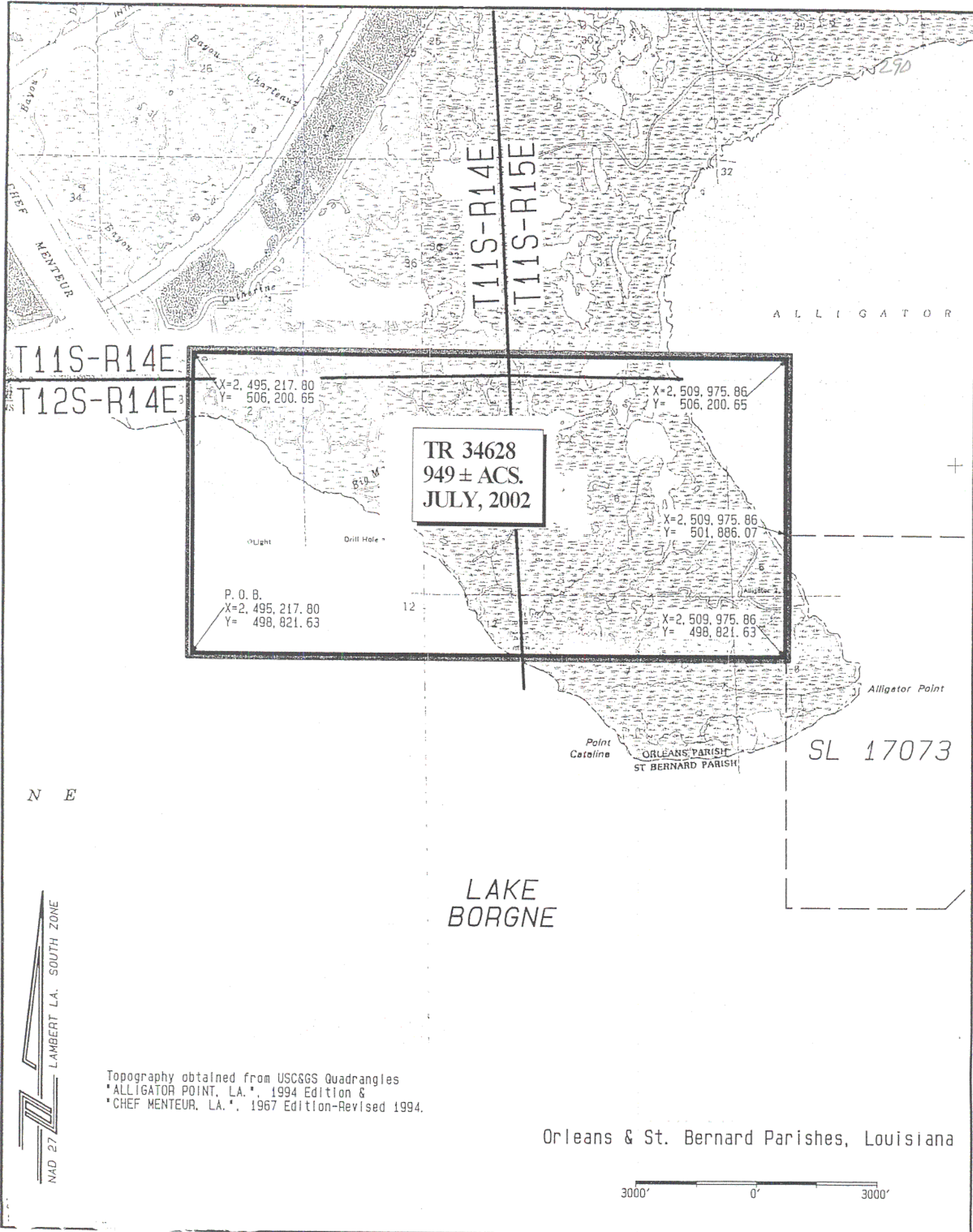
Any mineral lease selected from the nominated tract and awarded by the Louisiana State Mineral Board shall be without warranty of any kind, either express, implied, or statutory, including, but not limited to, the implied warranties or merchantability and fitness for a particular purpose. Should the mineral lease awarded by the Louisiana State Mineral Board be subsequently modified, cancelled or abrogated due to the existence of conflicting leases, operating agreements, private claims or other existing or future obligations or conditions which may affect all or any portion of the leased tract, it shall not relieve the Lessee of the obligation to pay any bonus due thereon to the Louisiana State Mineral Board, nor shall the Louisiana State Mineral Board be obligated to refund any consideration paid by the Lessee prior to such modification, cancellation, or abrogation, including, but not limited to, bonuses, rents and royalties.

NOTE: The Office of Mineral Resources will require a minimum bonus of \$230 per acre and a minimum royalty of 23%.

NOTE: The Department of Wildlife and Fisheries has designated certain areas in the coastal waters of the State of Louisiana as Oyster Seed Bed Areas. The exact location of those Seed Bed Areas must be obtained from Wildlife and Fisheries and any work done under an oil, gas and other liquid or gaseous mineral lease from the State of Louisiana must be conducted in conformity with the rules and regulations promulgated by the said Department of Wildlife and Fisheries for Oyster Seed Bed Areas.

NOTE: The State of Louisiana does hereby reserve, and this lease shall be subject to, the imprescriptible right of surface use in the nature of a servitude in favor of the Department of Natural Resources and/or the Louisiana Department of Wildlife and Fisheries, including its Offices and Commissions, for the sole purpose of implementing, constructing, servicing and maintaining approved coastal zone management and/or restoration projects. Utilization of any and all rights derived under this lease by the mineral lessee, its agents, successors or assigns, shall not interfere with nor hinder the reasonable surface use by the Department of Natural Resources and/or the Louisiana Department of Wildlife and Fisheries, its Offices or Commissions, as hereinabove reserved.

Applicant: OAPH Consultants



T11S-R14E  
T12S-R14E

T11S-R14E  
T11S-R15E

TR 34628  
949 ± ACS.  
JULY, 2002

X=2,495,217.80  
Y=506,200.65

X=2,509,975.86  
Y=506,200.65

X=2,509,975.86  
Y=501,886.07

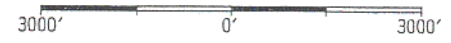
P.O.B.  
X=2,495,217.80  
Y=498,821.63

X=2,509,975.86  
Y=498,821.63

SL 17073

LAKE  
BORGNE

Orleans & St. Bernard Parishes, Louisiana



**TRACT 34629 - Orleans and St. Bernard Parishes, Louisiana**

All of the lands now or formerly constituting the beds and bottoms of all water bodies of every nature and description and all islands and other lands formed by accretion or reliction, except tax lands, owned by and not under mineral lease from the State of Louisiana on July 10, 2002, situated in Orleans and St. Bernard Parishes, Louisiana, within the following described boundaries: Beginning at a point having Coordinates of X = 2,495,217.80 and Y = 498,821.63; thence East 14,758.06 feet to a point on the West line of State Lease No. 17073 having Coordinates of X = 2,509,975.86 and Y = 498,821.63; thence South 6,113.18 feet along the West line of said State Lease No. 17073 to its Southwest corner having Coordinates of X = 2,509,975.86 and Y = 492,708.45; thence South 1,265.85 feet to a point having Coordinates of X = 2,509,975.86 and Y = 491,442.60; thence West 14,758.06 feet to a point having Coordinates of X = 2,495,217.80 and Y = 491,442.60; thence North 7,379.03 feet to the point of beginning, containing approximately **2,247 acres**, as shown outlined on a plat on file in the Office of Mineral Resources, Department of Natural Resources, as provided by the applicant. All bearings, distances and coordinates are based on Louisiana Coordinate System of 1927 (South Zone).

NOTE: The above description of the tract nominated for lease has been provided exclusively by the party nominating the tract for lease.

Maps depicting the nominated tract, containing the bearings, distances and coordinates of the nominated tract based on the Louisiana Coordinate System of 1927, North or South Zone, as applicable, are available for public inspection and review at the offices of the Louisiana State Mineral Board from 10:00 a.m. to 3:00 p.m. Monday - Friday.

Any mineral lease selected from the nominated tract and awarded by the Louisiana State Mineral Board shall be without warranty of any kind, either express, implied, or statutory, including, but not limited to, the implied warranties or merchantability and fitness for a particular purpose. Should the mineral lease awarded by the Louisiana State Mineral Board be subsequently modified, cancelled or abrogated due to the existence of conflicting leases, operating agreements, private claims or other existing of future obligations or conditions which may affect all or any portion of the leased tract, it shall not relieve the Lessee of the obligation to pay any bonus due thereon to the Louisiana State Mineral Board, nor shall the Louisiana State Mineral Board be obligated to refund any consideration paid by the Lessee prior to such modification, cancellation, or abrogation, including, but not limited to, bonuses, rents and royalties.

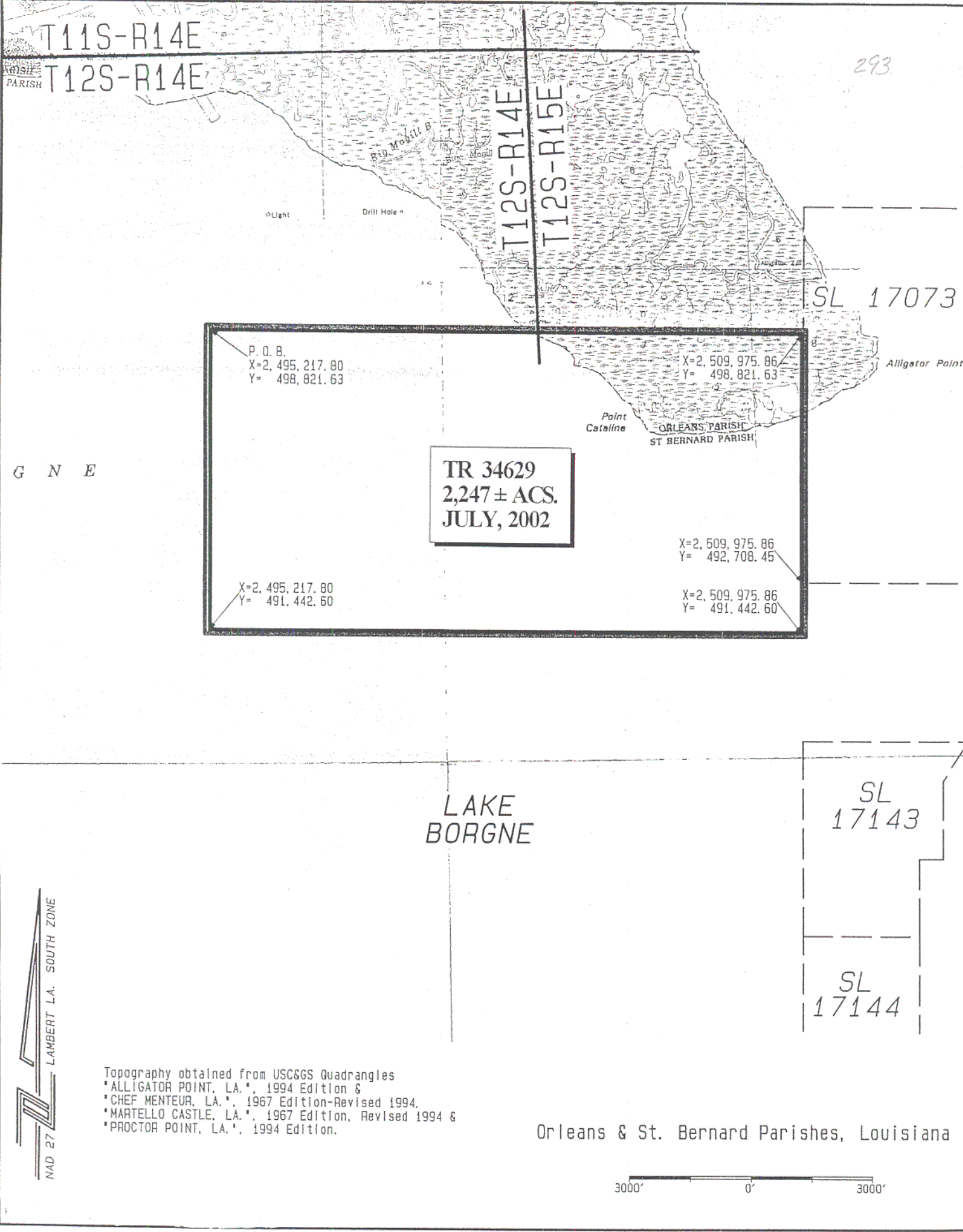
NOTE: The Office of Mineral Resources will require a minimum bonus of \$230 per acre and a minimum royalty of 23%.



NOTE: The Department of Wildlife and Fisheries has designated certain areas in the coastal waters of the State of Louisiana as Oyster Seed Bed Areas. The exact location of those Seed Bed Areas must be obtained from Wildlife and Fisheries and any work done under an oil, gas and other liquid or gaseous mineral lease from the State of Louisiana must be conducted in conformity with the rules and regulations promulgated by the said Department of Wildlife and Fisheries for Oyster Seed Bed Areas.

NOTE: The State of Louisiana does hereby reserve, and this lease shall be subject to, the imprescriptible right of surface use in the nature of a servitude in favor of the Department of Natural Resources and/or the Louisiana Department of Wildlife and Fisheries, including its Offices and Commissions, for the sole purpose of implementing, constructing, servicing and maintaining approved coastal zone management and/or restoration projects. Utilization of any and all rights derived under this lease by the mineral lessee, its agents, successors or assigns, shall not interfere with nor hinder the reasonable surface use by the Department of Natural Resources and/or the Louisiana Department of Wildlife and Fisheries, its Offices or Commissions, as hereinabove reserved.

Applicant: OAPH Consultants



T11S-R14E

PARISH T12S-R14E

293

T12S-R14E

T12S-R15E

SL 17073

P. O. B.  
X=2,495,217.80  
Y= 498,821.63

X=2,509,975.86  
Y= 498,821.63

Alligator Point

Point  
Castelle

ORLEANS PARISH  
ST BERNARD PARISH

TR 34629  
2,247 ± ACS.  
JULY, 2002

X=2,495,217.80  
Y= 491,442.60

X=2,509,975.86  
Y= 492,708.45

X=2,509,975.86  
Y= 491,442.60

LAKE  
BORGNE

SL  
17143

SL  
17144

NAD 27 LAMBERT LA. SOUTH ZONE

Topography obtained from USC&GS Quadrangles  
\*ALLIGATOR POINT, LA. \*, 1994 Edition &  
\*CHEF MENTEUR, LA. \*, 1967 Edition-Revised 1994.  
\*MARTELLO CASTLE, LA. \*, 1967 Edition, Revised 1994 &  
\*PROCTOR POINT, LA. \*, 1994 Edition.

Orleans & St. Bernard Parishes, Louisiana

3000' 0' 3000'

**TRACT 34630 - St. Bernard Parish, Louisiana**

All of the lands now or formerly constituting the beds and bottoms of all water bodies of every nature and description and all islands and other lands formed by accretion or reliction, except tax lands, owned by and not under mineral lease from the State of Louisiana on July 10, 2002, situated in St. Bernard Parish, Louisiana, within the following described boundaries: Beginning at a point having Coordinates of X = 2,509,975.86 and Y = 491,442.60; thence South 2,625.50 feet to the Northwest corner of State Lease No. 17143 having Coordinates of X = 2,509,975.86 and Y = 488,817.10; thence South 4,753.52 feet to the Southwest corner of said State Lease No. 17143 and the Northwest corner of State Lease No. 17144 having Coordinates of X = 2,509,975.86 and Y = 484,063.58; thence West 14,758.06 feet to a point having Coordinates of X = 2,495,217.80 and Y = 484,063.58; thence North 7,379.02 feet to a point having Coordinates of X = 2,495,217.80 and Y = 491,442.60; thence East 14,758.06 feet to the point of beginning, containing approximately **2,500 acres**, as shown outlined on a plat on file in the Office of Mineral Resources, Department of Natural Resources, as provided by the applicant. All bearings, distances and coordinates are based on Louisiana Coordinate System of 1927 (South Zone).

NOTE: The above description of the tract nominated for lease has been provided exclusively by the party nominating the tract for lease.

Maps depicting the nominated tract, containing the bearings, distances and coordinates of the nominated tract based on the Louisiana Coordinate System of 1927, North or South Zone, as applicable, are available for public inspection and review at the offices of the Louisiana State Mineral Board from 10:00 a.m. to 3:00 p.m. Monday - Friday.

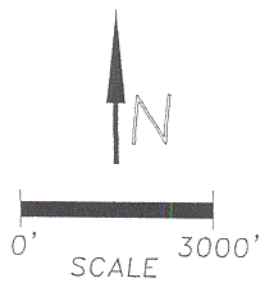
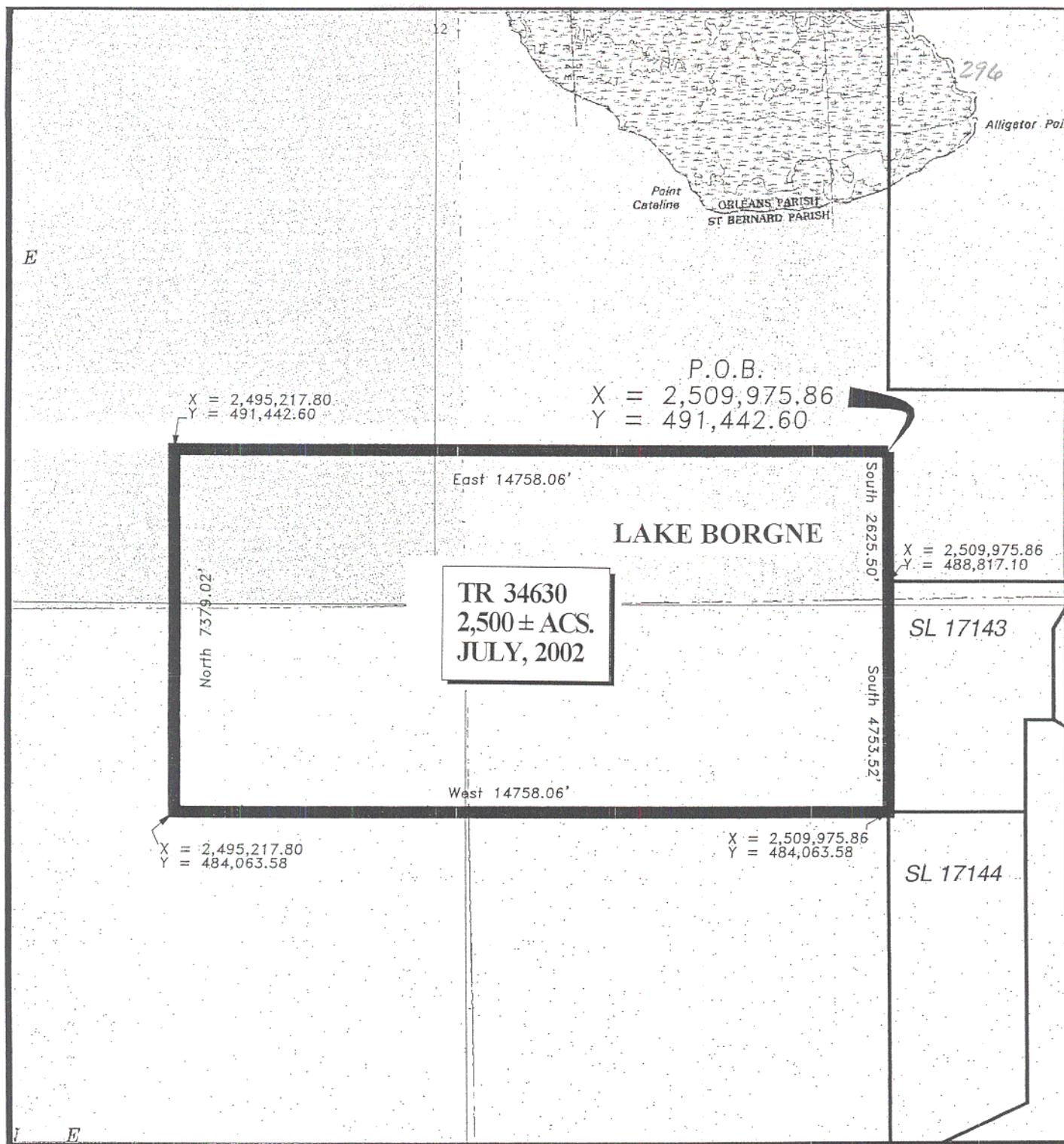
Any mineral lease selected from the nominated tract and awarded by the Louisiana State Mineral Board shall be without warranty of any kind, either express, implied, or statutory, including, but not limited to, the implied warranties or merchantability and fitness for a particular purpose. Should the mineral lease awarded by the Louisiana State Mineral Board be subsequently modified, cancelled or abrogated due to the existence of conflicting leases, operating agreements, private claims or other existing or future obligations or conditions which may affect all or any portion of the leased tract, it shall not relieve the Lessee of the obligation to pay any bonus due thereon to the Louisiana State Mineral Board, nor shall the Louisiana State Mineral Board be obligated to refund any consideration paid by the Lessee prior to such modification, cancellation, or abrogation, including, but not limited to, bonuses, rents and royalties.

NOTE: The Office of Mineral Resources will require a minimum bonus of \$230 per acre and a minimum royalty of 23%.

NOTE: The Department of Wildlife and Fisheries has designated certain areas in the coastal waters of the State of Louisiana as Oyster Seed Bed Areas. The exact location of those Seed Bed Areas must be obtained from Wildlife and Fisheries and any work done under an oil, gas and other liquid or gaseous mineral lease from the State of Louisiana must be conducted in conformity with the rules and regulations promulgated by the said Department of Wildlife and Fisheries for Oyster Seed Bed Areas.

NOTE: The State of Louisiana does hereby reserve, and this lease shall be subject to, the imprescriptible right of surface use in the nature of a servitude in favor of the Department of Natural Resources and/or the Louisiana Department of Wildlife and Fisheries, including its Offices and Commissions, for the sole purpose of implementing, constructing, servicing and maintaining approved coastal zone management and/or restoration projects. Utilization of any and all rights derived under this lease by the mineral lessee, its agents, successors or assigns, shall not interfere with nor hinder the reasonable surface use by the Department of Natural Resources and/or the Louisiana Department of Wildlife and Fisheries, its Offices or Commissions, as hereinabove reserved.

Applicant: OAPH Consultants



ST. BERNARD PARISH

**TRACT 34631 - St. Bernard Parish, Louisiana**

All of the lands now or formerly constituting the beds and bottoms of all water bodies of every nature and description and all islands and other lands formed by accretion or reliction, except tax lands, owned by and not under mineral lease from the State of Louisiana on July 10, 2002, situated in St. Bernard Parish, Louisiana, within the following described boundaries: Beginning at a point having Coordinates of X = 2,509,975.86 and Y = 476,684.56; thence West 14,758.06 feet to a point having Coordinates of X = 2,495,217.80 and Y = 476,684.56; thence North 7,379.02 feet to a point having Coordinates of X = 2,495,217.80 and Y = 484,063.58; thence East 14,758.06 feet to a point being the Southwest corner State Lease No. 17143 and the Northwest corner of State Lease No. 17144 having Coordinates of X = 2,509,975.86 and Y = 484,063.58; thence South 7,379.02 feet along said State Lease No. 17144 to the point of beginning, containing approximately **2,500 acres**, as shown outlined on a plat on file in the Office of Mineral Resources, Department of Natural Resources, as provided by the applicant. All bearings, distances and coordinates are based on Louisiana Coordinate System of 1927 (South Zone).

NOTE: The above description of the tract nominated for lease has been provided exclusively by the party nominating the tract for lease.

Maps depicting the nominated tract, containing the bearings, distances and coordinates of the nominated tract based on the Louisiana Coordinate System of 1927, North or South Zone, as applicable, are available for public inspection and review at the offices of the Louisiana State Mineral Board from 10:00 a.m. to 3:00 p.m. Monday - Friday.

Any mineral lease selected from the nominated tract and awarded by the Louisiana State Mineral Board shall be without warranty of any kind, either express, implied, or statutory, including, but not limited to, the implied warranties or merchantability and fitness for a particular purpose. Should the mineral lease awarded by the Louisiana State Mineral Board be subsequently modified, cancelled or abrogated due to the existence of conflicting leases, operating agreements, private claims or other existing or future obligations or conditions which may affect all or any portion of the leased tract, it shall not relieve the Lessee of the obligation to pay any bonus due thereon to the Louisiana State Mineral Board, nor shall the Louisiana State Mineral Board be obligated to refund any consideration paid by the Lessee prior to such modification, cancellation, or abrogation, including, but not limited to, bonuses, rents and royalties.

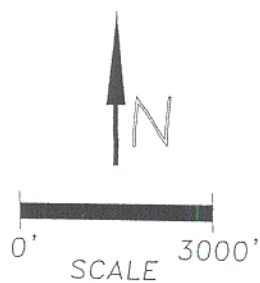
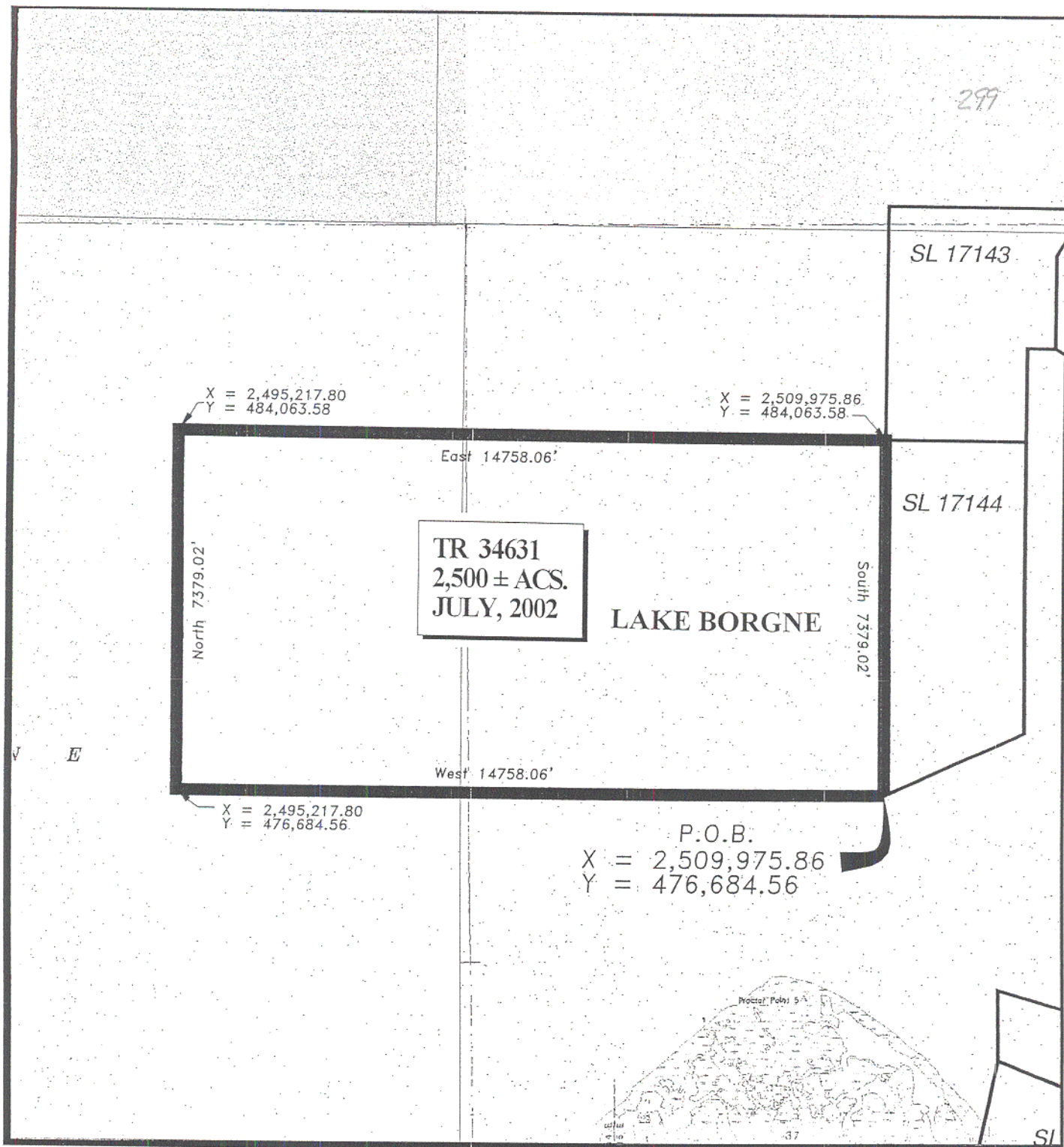
NOTE: The Office of Mineral Resources will require a minimum bonus of \$230 per acre and a minimum royalty of 23%.

NOTE: The Department of Wildlife and Fisheries has designated certain areas in the coastal waters of the State of Louisiana as Oyster Seed Bed Areas. The exact location of those Seed Bed Areas must be obtained from Wildlife and Fisheries and any work done under an oil, gas and other liquid or gaseous mineral lease from the State of Louisiana must be conducted in conformity with the rules and regulations promulgated by the said Department of Wildlife and Fisheries for Oyster Seed Bed Areas.

NOTE: The State of Louisiana does hereby reserve, and this lease shall be subject to, the imprescriptible right of surface use in the nature of a servitude in favor of the Department of Natural Resources and/or the Louisiana Department of Wildlife and Fisheries, including its Offices and Commissions, for the sole purpose of implementing, constructing, servicing and maintaining approved coastal zone management and/or restoration projects. Utilization of any and all rights derived under this lease by the mineral lessee, its agents, successors or assigns, shall not interfere with nor hinder the reasonable surface use by the Department of Natural Resources and/or the Louisiana Department of Wildlife and Fisheries, its Offices or Commissions, as hereinabove reserved.

Applicant: OAPH Consultants





**TRACT 34632 - St. Bernard Parish, Louisiana**

All of the lands now or formerly constituting the beds and bottoms of all water bodies of every nature and description and all islands and other lands formed by accretion or reliction, except tax lands, owned by and not under mineral lease from the State of Louisiana on July 10, 2002, situated in St. Bernard Parish, Louisiana, within the following described boundaries: Beginning at a point having Coordinates of X = 2,495,217.80 and Y = 476,684.56; thence East 14,758.06 feet to the Southwest corner of State Lease No. 17144 having Coordinates of X = 2,509,975.86 and Y = 476,684.56; thence South 7,379.03 feet to a point having Coordinates of X = 2,509,975.86 and Y = 469,305.53; thence West 14,758.06 feet to a point having Coordinates of X = 2,495,217.80 and Y = 469,305.53; thence North 7,379.03 feet to the point of beginning, containing approximately **2,150 acres**, as shown outlined on a plat on file in the Office of Mineral Resources, Department of Natural Resources, as provided by the applicant. All bearings, distances and coordinates are based on Louisiana Coordinate System of 1927 (South Zone).

NOTE: The above description of the tract nominated for lease has been provided exclusively by the party nominating the tract for lease.

Maps depicting the nominated tract, containing the bearings, distances and coordinates of the nominated tract based on the Louisiana Coordinate System of 1927, North or South Zone, as applicable, are available for public inspection and review at the offices of the Louisiana State Mineral Board from 10:00 a.m. to 3:00 p.m. Monday - Friday.

Any mineral lease selected from the nominated tract and awarded by the Louisiana State Mineral Board shall be without warranty of any kind, either express, implied, or statutory, including, but not limited to, the implied warranties or merchantability and fitness for a particular purpose. Should the mineral lease awarded by the Louisiana State Mineral Board be subsequently modified, cancelled or abrogated due to the existence of conflicting leases, operating agreements, private claims or other existing or future obligations or conditions which may affect all or any portion of the leased tract, it shall not relieve the Lessee of the obligation to pay any bonus due thereon to the Louisiana State Mineral Board, nor shall the Louisiana State Mineral Board be obligated to refund any consideration paid by the Lessee prior to such modification, cancellation, or abrogation, including, but not limited to, bonuses, rents and royalties.

NOTE: The Office of Mineral Resources will require a minimum bonus of \$230 per acre and a minimum royalty of 23%.

NOTE: The Department of Wildlife and Fisheries has designated certain areas in the coastal waters of the State of Louisiana as Oyster Seed Bed

Areas. The exact location of those Seed Bed Areas must be obtained from Wildlife and Fisheries and any work done under an oil, gas and other liquid or gaseous mineral lease from the State of Louisiana must be conducted in conformity with the rules and regulations promulgated by the said Department of Wildlife and Fisheries for Oyster Seed Bed Areas.

NOTE: The State of Louisiana does hereby reserve, and this lease shall be subject to, the imprescriptible right of surface use in the nature of a servitude in favor of the Department of Natural Resources and/or the Louisiana Department of Wildlife and Fisheries, including its Offices and Commissions, for the sole purpose of implementing, constructing, servicing and maintaining approved coastal zone management and/or restoration projects. Utilization of any and all rights derived under this lease by the mineral lessee, its agents, successors or assigns, shall not interfere with nor hinder the reasonable surface use by the Department of Natural Resources and/or the Louisiana Department of Wildlife and Fisheries, its Offices or Commissions, as hereinabove reserved.

Applicant: OAPH Consultants

SL  
17143

302

SL  
17144

LAKE  
BORGNE

N E

P. O. B.  
X=2,495,217.80  
Y= 476,684.56

X=2,509,975.86  
Y= 476,684.56

TR 34632  
2,150 ± ACS.  
JULY, 2002

X=2,495,217.80  
Y= 469,305.53

X=2,509,975.86  
Y= 469,305.53

SL 17145

SL  
17011

T13S-R14E  
T13S-R15E

NAD 27 LAMBERT LA. SOUTH ZONE

Topography obtained from USCGS Quadrangles  
\*MARTELLO CASTLE, LA.\*, 1967 Edition, Revised 1994 &  
\*PROCTOR POINT, LA.\*, 1967 Edition, Revised 1994.

St. Bernard Parish, Louisiana

3000' 0' 3000'

**TRACT 34633 - St. Bernard Parish, Louisiana**

All of the lands now or formerly constituting the beds and bottoms of all water bodies of every nature and description and all islands and other lands formed by accretion or reliction, except tax lands, owned by and not under mineral lease from the State of Louisiana on July 10, 2002, situated in St. Bernard Parish, Louisiana, within the following described boundaries: Beginning at a point having Coordinates of X = 2,495,217.80 and Y = 461,926.51; thence North 7,379.02 feet to a point having Coordinates of X = 2,495,217.80 and Y = 469,305.53; thence East 14,758.06 feet to a point having Coordinates of X = 2,509,975.86 and Y = 469,305.53; thence South 7,379.02 feet to a point having Coordinates of X = 2,509,975.86 and Y = 461,926.51; thence West 14,758.06 feet to the point of beginning, containing approximately **1,094 acres**, as shown outlined on a plat on file in the Office of Mineral Resources, Department of Natural Resources, as provided by the applicant. All bearings, distances and coordinates are based on Louisiana Coordinate System of 1927 (South Zone).

NOTE: The above description of the tract nominated for lease has been provided exclusively by the party nominating the tract for lease.

Maps depicting the nominated tract, containing the bearings, distances and coordinates of the nominated tract based on the Louisiana Coordinate System of 1927, North or South Zone, as applicable, are available for public inspection and review at the offices of the Louisiana State Mineral Board from 10:00 a.m. to 3:00 p.m. Monday - Friday.

Any mineral lease selected from the nominated tract and awarded by the Louisiana State Mineral Board shall be without warranty of any kind, either express, implied, or statutory, including, but not limited to, the implied warranties or merchantability and fitness for a particular purpose. Should the mineral lease awarded by the Louisiana State Mineral Board be subsequently modified, cancelled or abrogated due to the existence of conflicting leases, operating agreements, private claims or other existing or future obligations or conditions which may affect all or any portion of the leased tract, it shall not relieve the Lessee of the obligation to pay any bonus due thereon to the Louisiana State Mineral Board, nor shall the Louisiana State Mineral Board be obligated to refund any consideration paid by the Lessee prior to such modification, cancellation, or abrogation, including, but not limited to, bonuses, rents and royalties.

NOTE: The Office of Mineral Resources will require a minimum bonus of \$230 per acre and a minimum royalty of 23%.

NOTE: The Department of Wildlife and Fisheries has designated certain areas in the coastal waters of the State of Louisiana as Oyster Seed Bed Areas. The exact location of those Seed Bed Areas must be obtained from

Wildlife and Fisheries and any work done under an oil, gas and other liquid or gaseous mineral lease from the State of Louisiana must be conducted in conformity with the rules and regulations promulgated by the said Department of Wildlife and Fisheries for Oyster Seed Bed Areas.

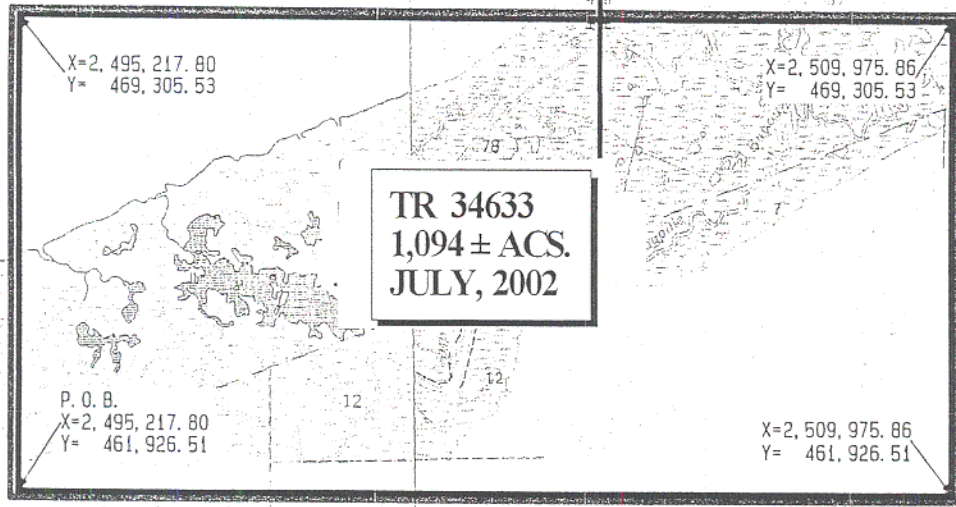
NOTE: The State of Louisiana does hereby reserve, and this lease shall be subject to, the imprescriptible right of surface use in the nature of a servitude in favor of the Department of Natural Resources and/or the Louisiana Department of Wildlife and Fisheries, including its Offices and Commissions, for the sole purpose of implementing, constructing, servicing and maintaining approved coastal zone management and/or restoration projects. Utilization of any and all rights derived under this lease by the mineral lessee, its agents, successors or assigns, shall not interfere with nor hinder the reasonable surface use by the Department of Natural Resources and/or the Louisiana Department of Wildlife and Fisheries, its Offices or Commissions, as hereinabove reserved.

Applicant: OAPH Consultants

305

SL 17145

SL 17011



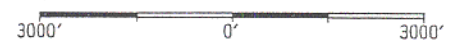
LAKE BORGNE

T13S-R14E  
T13S-R15E

NAD 27 LAMBERT LA. SOUTH ZONE

Topography obtained from USC&GS Quadrangles  
"MARTELLO CASTLE, LA.", 1967 Edition, Revised 1994 &  
"PROCTOR POINT, LA.", 1994 Edition.

St. Bernard Parish, Louisiana





**TRACT 34634 - St. Bernard Parish, Louisiana**

All of the lands now or formerly constituting the beds and bottoms of all water bodies of every nature and description and all islands and other lands formed by accretion or reliction, except tax lands, owned by and not under mineral lease from the State of Louisiana on July 10, 2002, situated in St. Bernard Parish, Louisiana, within the following described boundaries: Beginning at a point having Coordinates of X = 2,495,217.80 and Y = 461,926.51; thence East 14,758.06 feet to a point having Coordinates of X = 2,509,975.86 and Y = 461,926.51; thence South 14,758.05 feet to a point having Coordinates of X = 2,509,975.86 and Y = 447,168.46; thence West 14,758.06 feet to a point having Coordinates of X = 2,495,217.80 and Y = 447,168.46; thence North 14,758.05 feet to the point of beginning, containing approximately **1,819 acres**, as shown outlined on a plat on file in the Office of Mineral Resources, Department of Natural Resources, as provided by the applicant. All bearings, distances and coordinates are based on Louisiana Coordinate System of 1927 (South Zone).

NOTE: The above description of the tract nominated for lease has been provided exclusively by the party nominating the tract for lease.

Maps depicting the nominated tract, containing the bearings, distances and coordinates of the nominated tract based on the Louisiana Coordinate System of 1927, North or South Zone, as applicable, are available for public inspection and review at the offices of the Louisiana State Mineral Board from 10:00 a.m. to 3:00 p.m. Monday - Friday.

Any mineral lease selected from the nominated tract and awarded by the Louisiana State Mineral Board shall be without warranty of any kind, either express, implied, or statutory, including, but not limited to, the implied warranties or merchantability and fitness for a particular purpose. Should the mineral lease awarded by the Louisiana State Mineral Board be subsequently modified, cancelled or abrogated due to the existence of conflicting leases, operating agreements, private claims or other existing or future obligations or conditions which may affect all or any portion of the leased tract, it shall not relieve the Lessee of the obligation to pay any bonus due thereon to the Louisiana State Mineral Board, nor shall the Louisiana State Mineral Board be obligated to refund any consideration paid by the Lessee prior to such modification, cancellation, or abrogation, including, but not limited to, bonuses, rents and royalties.

NOTE: The Office of Mineral Resources will require a minimum bonus of \$230 per acre and a minimum royalty of 23%.

NOTE: The Department of Wildlife and Fisheries has designated certain areas in the coastal waters of the State of Louisiana as Oyster Seed Bed Areas. The exact location of those Seed Bed Areas must be obtained from

Wildlife and Fisheries and any work done under an oil, gas and other liquid or gaseous mineral lease from the State of Louisiana must be conducted in conformity with the rules and regulations promulgated by the said Department of Wildlife and Fisheries for Oyster Seed Bed Areas.

NOTE: The State of Louisiana does hereby reserve, and this lease shall be subject to, the imprescriptible right of surface use in the nature of a servitude in favor of the Department of Natural Resources and/or the Louisiana Department of Wildlife and Fisheries, including its Offices and Commissions, for the sole purpose of implementing, constructing, servicing and maintaining approved coastal zone management and/or restoration projects. Utilization of any and all rights derived under this lease by the mineral lessee, its agents, successors or assigns, shall not interfere with nor hinder the reasonable surface use by the Department of Natural Resources and/or the Louisiana Department of Wildlife and Fisheries, its Offices or Commissions, as hereinabove reserved.

Applicant: OAPH Consultants

SL  
17011

308

LAKE  
BORGNE

P. O. B.  
X=2,495,217.80  
Y= 461,926.51

X=2,509,975.86  
Y= 461,926.51

TR 34634  
1,819 ± ACS.  
JULY, 2002

T13S-R14E

T13S-R15E

X=2,495,217.80  
Y= 447,168.46

X=2,509,975.86  
Y= 447,168.46

Topography obtained from USC&GS Quadrangles  
\*MARTELLO CASTLE, LA., 1967 Edition, Revised 1994 &  
\*PROCTOR POINT, LA., 1967 Edition, Revised 1994.

St. Bernard Parish, Louisiana

3000' 0' 3000'

NAD 27 LAMBERT LA. SOUTH ZONE

**TRACT 34635 - Orleans and St. Bernard Parishes, Louisiana**

All of the lands now or formerly constituting the beds and bottoms of all water bodies of every nature and description and all islands and other lands formed by accretion or reliction, except tax lands, owned by and not under mineral lease from the State of Louisiana on July 10, 2002, situated in Orleans and St. Bernard Parishes, Louisiana, within the following described boundaries: Beginning at a point having Coordinates of X = 2,509,975.86 and Y = 511,958.70; thence North 9,000.00 feet to a point on the South line of Block 29, North Lake Borgne Area, having Coordinates of X = 2,509,975.86 and Y = 520,958.70; thence East 8,274.14 feet on the South line of said Block 29 to its Southeast corner, also being the Southwest corner of Block 28, North Lake Borgne Area, having Coordinates of X = 2,518,250.00 and Y = 520,958.70; thence East 6,483.90 feet on the South line of said Block 28 to a point having Coordinates of X = 2,524,733.90 and Y = 520,958.70; thence South 9,000.00 feet to a point having Coordinates of X = 2,524,733.90 and Y = 511,958.70; thence West 14,758.04 feet to the point of beginning, containing approximately **1,443 acres**, as shown outlined on a plat on file in the Office of Mineral Resources, Department of Natural Resources, as provided by the applicant. All bearings, distances and coordinates are based on Louisiana Coordinate System of 1927 (South Zone).

NOTE: The above description of the tract nominated for lease has been provided exclusively by the party nominating the tract for lease.

Maps depicting the nominated tract, containing the bearings, distances and coordinates of the nominated tract based on the Louisiana Coordinate System of 1927, North or South Zone, as applicable, are available for public inspection and review at the offices of the Louisiana State Mineral Board from 10:00 a.m. to 3:00 p.m. Monday - Friday.

Any mineral lease selected from the nominated tract and awarded by the Louisiana State Mineral Board shall be without warranty of any kind, either express, implied, or statutory, including, but not limited to, the implied warranties or merchantability and fitness for a particular purpose. Should the mineral lease awarded by the Louisiana State Mineral Board be subsequently modified, cancelled or abrogated due to the existence of conflicting leases, operating agreements, private claims or other existing or future obligations or conditions which may affect all or any portion of the leased tract, it shall not relieve the Lessee of the obligation to pay any bonus due thereon to the Louisiana State Mineral Board, nor shall the Louisiana State Mineral Board be obligated to refund any consideration paid by the Lessee prior to such modification, cancellation, or abrogation, including, but not limited to, bonuses, rents and royalties.

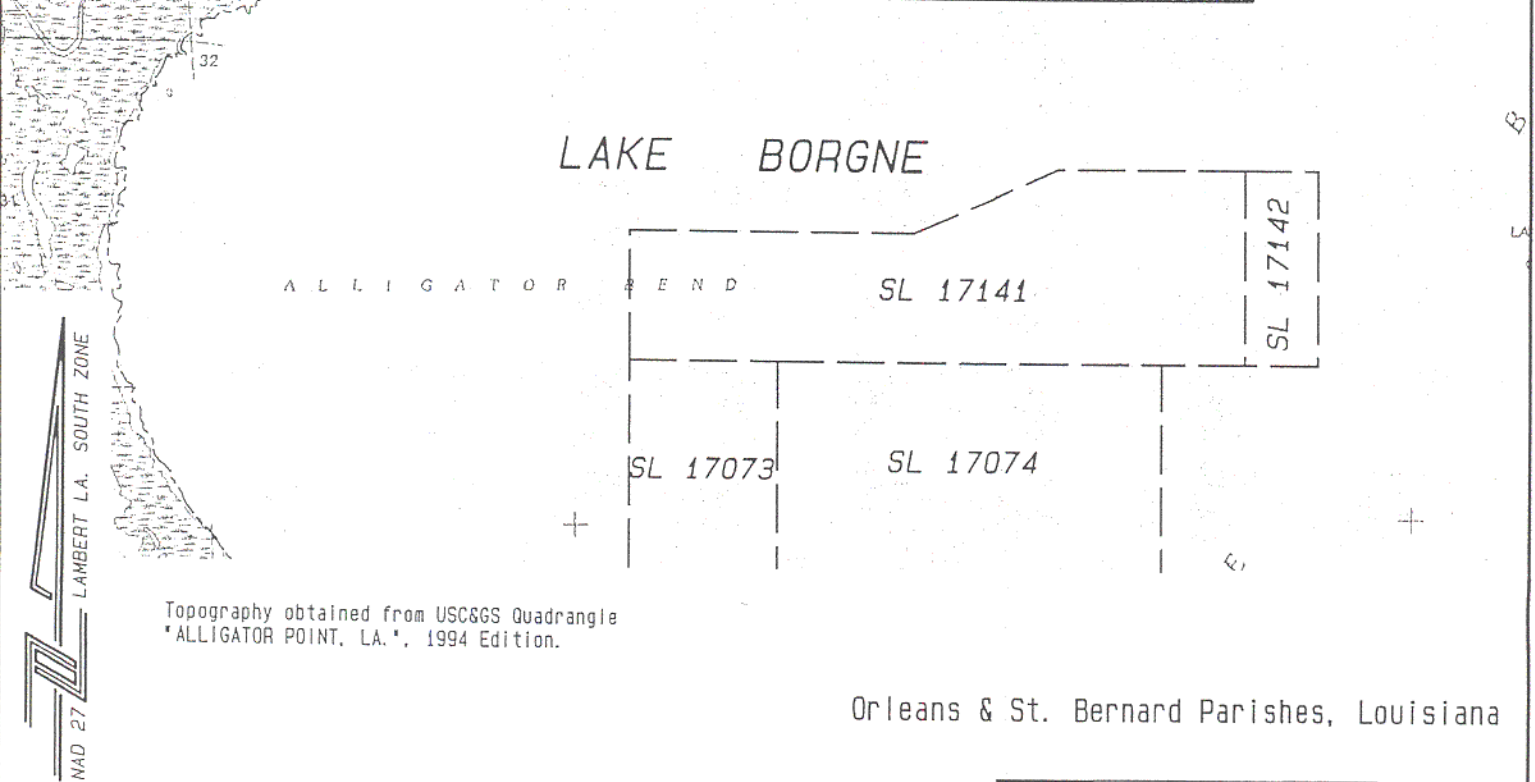
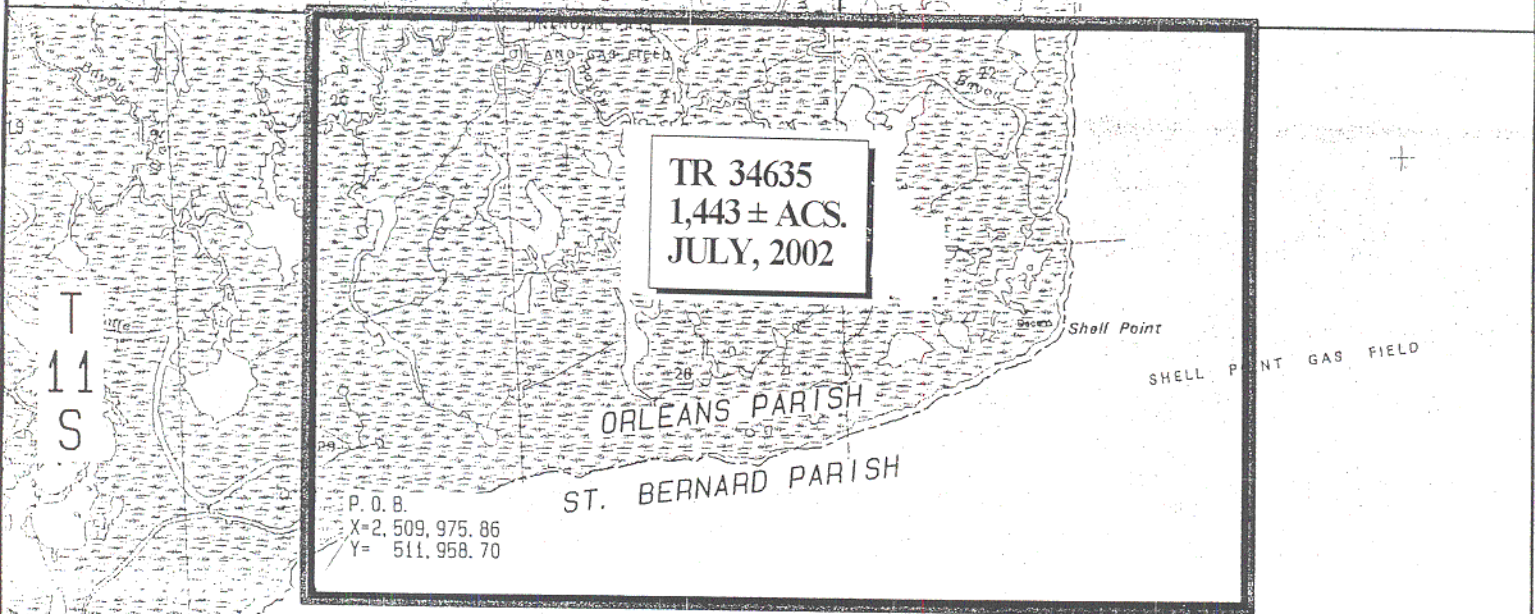
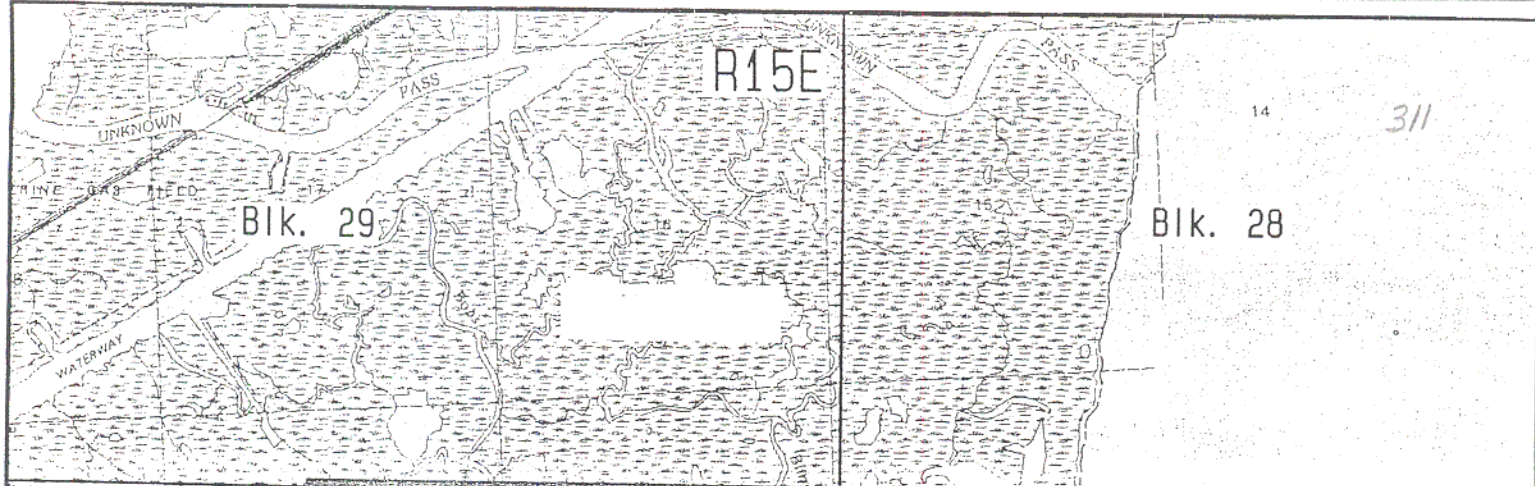
NOTE: The Office of Mineral Resources will require a minimum bonus of \$230 per acre and a minimum royalty of 23%.

NOTE: The Department of Wildlife and Fisheries has designated certain areas in the coastal waters of the State of Louisiana as Oyster Seed Bed Areas. The exact location of those Seed Bed Areas must be obtained from Wildlife and Fisheries and any work done under an oil, gas and other liquid or gaseous mineral lease from the State of Louisiana must be conducted in conformity with the rules and regulations promulgated by the said Department of Wildlife and Fisheries for Oyster Seed Bed Areas.

NOTE: The State of Louisiana does hereby reserve, and this lease shall be subject to, the imprescriptible right of surface use in the nature of a servitude in favor of the Department of Natural Resources and/or the Louisiana Department of Wildlife and Fisheries, including its Offices and Commissions, for the sole purpose of implementing, constructing, servicing and maintaining approved coastal zone management and/or restoration projects. Utilization of any and all rights derived under this lease by the mineral lessee, its agents, successors or assigns, shall not interfere with nor hinder the reasonable surface use by the Department of Natural Resources and/or the Louisiana Department of Wildlife and Fisheries, its Offices or Commissions, as hereinabove reserved.

Applicant: OAPH Consultants





Orleans & St. Bernard Parishes, Louisiana

**TRACT 34636 - St. Bernard Parish, Louisiana**

All of the lands now or formerly constituting the beds and bottoms of all water bodies of every nature and description and all islands and other lands formed by accretion or reliction, except tax lands, owned by and not under mineral lease from the State of Louisiana on July 10, 2002, situated in St. Bernard Parish, Louisiana, within the following described boundaries: Beginning at a point having Coordinates of X = 2,509,975.86 and Y = 511,958.70; thence East 14,758.04 feet to a point having Coordinates of X = 2,524,733.90 and Y = 511,958.70; thence South 2,758.05 feet to a point being the Northeast corner of State Lease No. 17141 and the Northwest corner of State Lease No. 17142 having Coordinates of X = 2,524,733.90 and Y = 509,200.65; thence along said State Lease No. 17141 the following courses: West 2,961.97 feet to a point having Coordinates of X = 2,521,771.93 and Y = 509,200.65, South 66 degrees 02 minutes 38 seconds West 2,462.83 feet to a point having Coordinates of X = 2,519,521.26 and Y = 508,200.65, West 4,501.33 feet to a point having Coordinates of X = 2,515,019.93 and Y = 508,200.65 and South 2,000.00 feet to a point being the Southwest corner of State Lease No. 17141 and the northern most Northwest corner of State Lease No. 17073 having Coordinates of X = 2,515,019.93 and Y = 506,200.65; thence West 5,044.07 feet to a point having Coordinates of X = 2,509,975.86 and Y = 506,200.65; thence North 5,758.05 feet to the point of beginning, containing approximately **1,410.98 acres**, as shown outlined on a plat on file in the Office of Mineral Resources, Department of Natural Resources, as provided by the applicant. All bearings, distances and coordinates are based on Louisiana Coordinate System of 1927 (South Zone).

NOTE: The above description of the tract nominated for lease has been provided exclusively by the party nominating the tract for lease.

Maps depicting the nominated tract, containing the bearings, distances and coordinates of the nominated tract based on the Louisiana Coordinate System of 1927, North or South Zone, as applicable, are available for public inspection and review at the offices of the Louisiana State Mineral Board from 10:00 a.m. to 3:00 p.m. Monday - Friday.

Any mineral lease selected from the nominated tract and awarded by the Louisiana State Mineral Board shall be without warranty of any kind, either express, implied, or statutory, including, but not limited to, the implied warranties or merchantability and fitness for a particular purpose. Should the mineral lease awarded by the Louisiana State Mineral Board be subsequently modified, cancelled or abrogated due to the existence of conflicting leases, operating agreements, private claims or other existing or future obligations or conditions which may affect all or any portion of the leased tract, it shall not relieve the Lessee of the obligation to pay any bonus due thereon to the Louisiana State Mineral Board, nor shall the Louisiana State Mineral Board be obligated to refund



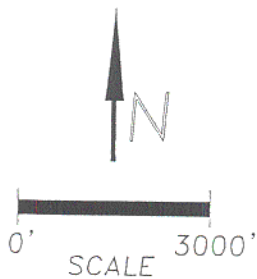
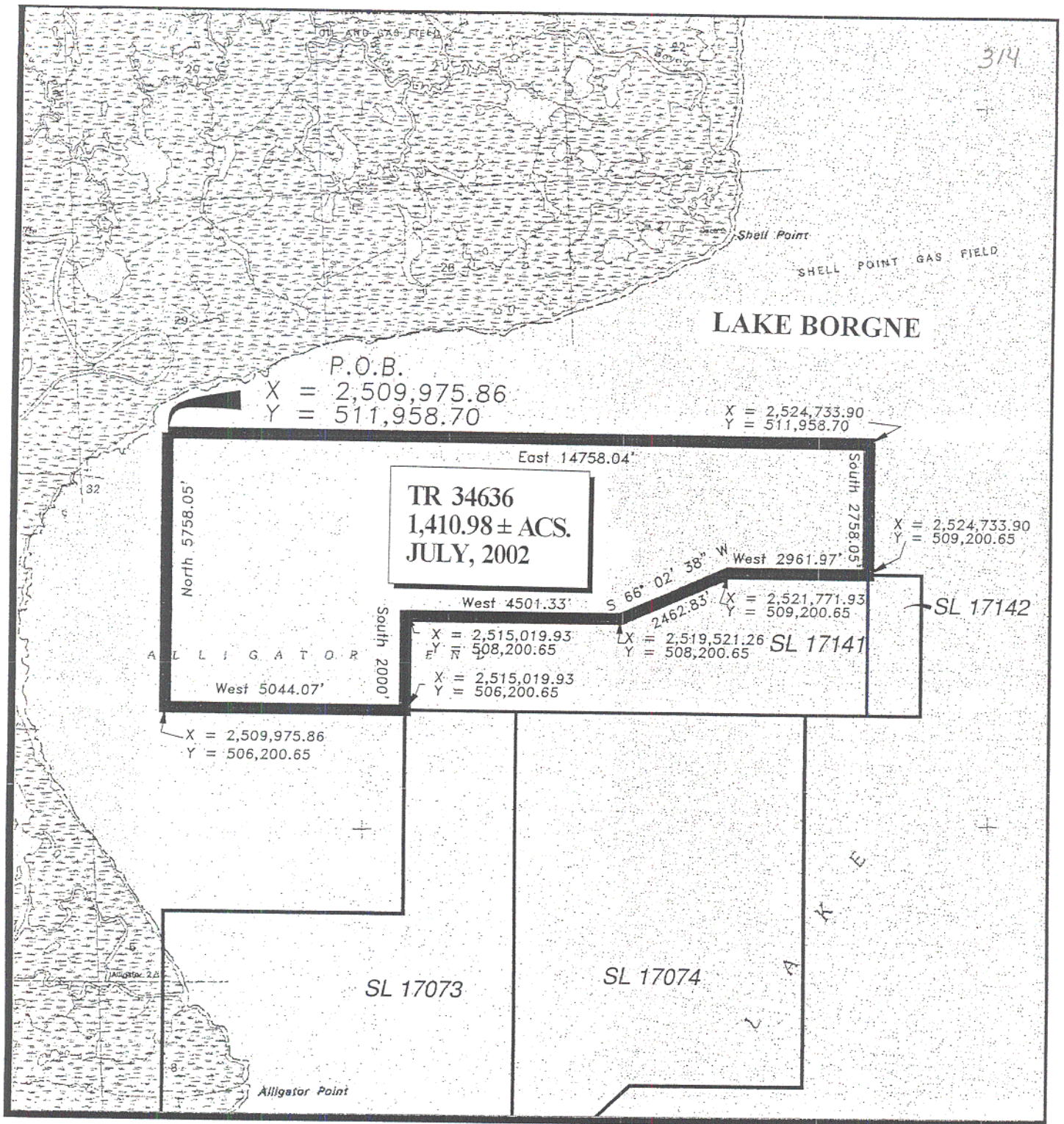
any consideration paid by the Lessee prior to such modification, cancellation, or abrogation, including, but not limited to, bonuses, rents and royalties.

NOTE: The Office of Mineral Resources will require a minimum bonus of \$230 per acre and a minimum royalty of 23%.

NOTE: The Department of Wildlife and Fisheries has designated certain areas in the coastal waters of the State of Louisiana as Oyster Seed Bed Areas. The exact location of those Seed Bed Areas must be obtained from Wildlife and Fisheries and any work done under an oil, gas and other liquid or gaseous mineral lease from the State of Louisiana must be conducted in conformity with the rules and regulations promulgated by the said Department of Wildlife and Fisheries for Oyster Seed Bed Areas.

NOTE: The State of Louisiana does hereby reserve, and this lease shall be subject to, the imprescriptible right of surface use in the nature of a servitude in favor of the Department of Natural Resources and/or the Louisiana Department of Wildlife and Fisheries, including its Offices and Commissions, for the sole purpose of implementing, constructing, servicing and maintaining approved coastal zone management and/or restoration projects. Utilization of any and all rights derived under this lease by the mineral lessee, its agents, successors or assigns, shall not interfere with nor hinder the reasonable surface use by the Department of Natural Resources and/or the Louisiana Department of Wildlife and Fisheries, its Offices or Commissions, as hereinabove reserved.

Applicant: OAPH Consultants



ST. BERNARD PARISH

**TRACT 34637 - St. Bernard Parish, Louisiana**

All of the lands now or formerly constituting the beds and bottoms of all water bodies of every nature and description and all islands and other lands formed by accretion or reliction, except tax lands, owned by and not under mineral lease from the State of Louisiana on July 10, 2002, situated in St. Bernard Parish, Louisiana, within the following described boundaries: Beginning at a point having Coordinates of X = 2,509,975.86 and Y = 506,200.65; thence East 5,044.07 feet to a point being the northernmost Northwest corner of State Lease No. 17073 having Coordinates of X = 2,515,019.93 and Y = 506,200.65; thence along said State Lease No. 17073 the following courses: South 4,314.58 feet to a point having Coordinates of X = 2,515,019.93 and Y = 501,886.07 and West 5,044.07 feet to a point having Coordinates of X = 2,509,975.86 and Y = 501,886.07; thence North 4,314.58 feet to the point of beginning, containing approximately **499.61 acres**, as shown outlined on a plat on file in the Office of Mineral Resources, Department of Natural Resources, as provided by the applicant. All bearings, distances and coordinates are based on Louisiana Coordinate System of 1927 (South Zone).

NOTE: The above description of the tract nominated for lease has been provided exclusively by the party nominating the tract for lease.

Maps depicting the nominated tract, containing the bearings, distances and coordinates of the nominated tract based on the Louisiana Coordinate System of 1927, North or South Zone, as applicable, are available for public inspection and review at the offices of the Louisiana State Mineral Board from 10:00 a.m. to 3:00 p.m. Monday - Friday.

Any mineral lease selected from the nominated tract and awarded by the Louisiana State Mineral Board shall be without warranty of any kind, either express, implied, or statutory, including, but not limited to, the implied warranties or merchantability and fitness for a particular purpose. Should the mineral lease awarded by the Louisiana State Mineral Board be subsequently modified, cancelled or abrogated due to the existence of conflicting leases, operating agreements, private claims or other existing or future obligations or conditions which may affect all or any portion of the leased tract, it shall not relieve the Lessee of the obligation to pay any bonus due thereon to the Louisiana State Mineral Board, nor shall the Louisiana State Mineral Board be obligated to refund any consideration paid by the Lessee prior to such modification, cancellation, or abrogation, including, but not limited to, bonuses, rents and royalties.

NOTE: The Office of Mineral Resources will require a minimum bonus of \$230 per acre and a minimum royalty of 23%.

NOTE: The Department of Wildlife and Fisheries has designated certain areas in the coastal waters of the State of Louisiana as Oyster Seed Bed Areas. The exact location of those Seed Bed Areas must be obtained from Wildlife and Fisheries and any work done under an oil, gas and other liquid or gaseous mineral lease from the State of Louisiana must be conducted in conformity with the rules and regulations promulgated by the said Department of Wildlife and Fisheries for Oyster Seed Bed Areas.

NOTE: The State of Louisiana does hereby reserve, and this lease shall be subject to, the imprescriptible right of surface use in the nature of a servitude in favor of the Department of Natural Resources and/or the Louisiana Department of Wildlife and Fisheries, including its Offices and Commissions, for the sole purpose of implementing, constructing, servicing and maintaining approved coastal zone management and/or restoration projects. Utilization of any and all rights derived under this lease by the mineral lessee, its agents, successors or assigns, shall not interfere with nor hinder the reasonable surface use by the Department of Natural Resources and/or the Louisiana Department of Wildlife and Fisheries, its Offices or Commissions, as hereinabove reserved.

Applicant: OAPH Consultants



LAKE BORGNE

317

P.O.B.  
X = 2,509,975.86  
Y = 506,200.65

ALLIGATOR POINT

SL 17141

X = 2,515,019.93  
Y = 506,200.65

East 5044.07'  
North 4314.58'  
TR 34637  
499.61 ± ACS.  
JULY, 2002  
West 5044.07'

X = 2,509,975.86  
Y = 501,886.07

X = 2,515,019.93  
Y = 501,886.07

SL 17073

SL 17074

Alligator Point

Point  
Cataline

ORLEANS PARISH  
ST BERNARD PARISH



0' SCALE 3000'

ST. BERNARD PARISH

**TRACT 34638 - St. Bernard Parish, Louisiana**

All of the lands now or formerly constituting the beds and bottoms of all water bodies of every nature and description and all islands and other lands formed by accretion or reliction, except tax lands, owned by and not under mineral lease from the State of Louisiana on July 10, 2002, situated in St. Bernard Parish, Louisiana, within the following described boundaries: Beginning at a point being the Southeast corner of State Lease No. 17141 and the Southwest corner of State Lease No. 17142 having Coordinates of X = 2,524,733.90 and Y = 506,200.65; thence South 14,758.05 feet to a point having Coordinates of X = 2,524,733.90 and Y = 491,442.60; thence West 14,758.04 feet to a point having Coordinates of X = 2,509,975.86 and Y = 491,442.60; thence North 1,265.85 feet to a point being the Southwest corner of State Lease No. 17073 having Coordinates of X = 2,509,975.86 and Y = 492,708.45; thence along said State Lease No. 17073 the following courses: East 3,981.27 feet to a point having Coordinates of X = 2,513,957.13 and Y = 492,708.45 and North 46 degrees 10 minutes 29 seconds East 4,709.58 feet to a point being the northernmost Southeast corner of State Lease No. 17073 and the southernmost corner of State Lease No. 17074 having Coordinates of X = 2,517,354.88 and Y = 495,969.65; thence along said State Lease No. 17074 the following courses: North 46 degrees 10 minutes 29 seconds East to a point having Coordinates of X = 2,519,801.62 and Y = 498,318.70, East 3,617.88 feet to a point having Coordinates of X = 2,523,419.50 and Y = 498,318.07 and North 7,882.58 feet to the Northeast corner of said State Lease No. 17074 and a point on the South boundary of State Lease No. 17141 having Coordinates of X = 2,523,419.50 and Y = 506,200.65; thence East 1,314.40 feet along the South boundary of said State Lease No. 17141 to the point of beginning, containing approximately **1,678.26 acres**, as shown outlined on a plat on file in the Office of Mineral Resources, Department of Natural Resources, as provided by the applicant. All bearings, distances and coordinates are based on Louisiana Coordinate System of 1927 (South Zone).

NOTE: The above description of the tract nominated for lease has been provided exclusively by the party nominating the tract for lease.

Maps depicting the nominated tract, containing the bearings, distances and coordinates of the nominated tract based on the Louisiana Coordinate System of 1927, North or South Zone, as applicable, are available for public inspection and review at the offices of the Louisiana State Mineral Board from 10:00 a.m. to 3:00 p.m. Monday - Friday.

Any mineral lease selected from the nominated tract and awarded by the Louisiana State Mineral Board shall be without warranty of any kind, either express, implied, or statutory, including, but not limited to, the implied warranties or merchantability and fitness for a particular purpose. Should the mineral lease awarded by the Louisiana State Mineral Board be subsequently modified, cancelled or abrogated due to the

existence of conflicting leases, operating agreements, private claims or other existing or future obligations or conditions which may affect all or any portion of the leased tract, it shall not relieve the Lessee of the obligation to pay any bonus due thereon to the Louisiana State Mineral Board, nor shall the Louisiana State Mineral Board be obligated to refund any consideration paid by the Lessee prior to such modification, cancellation, or abrogation, including, but not limited to, bonuses, rents and royalties.

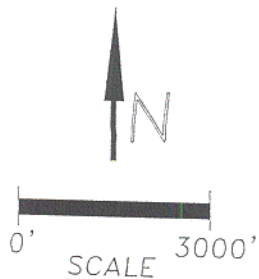
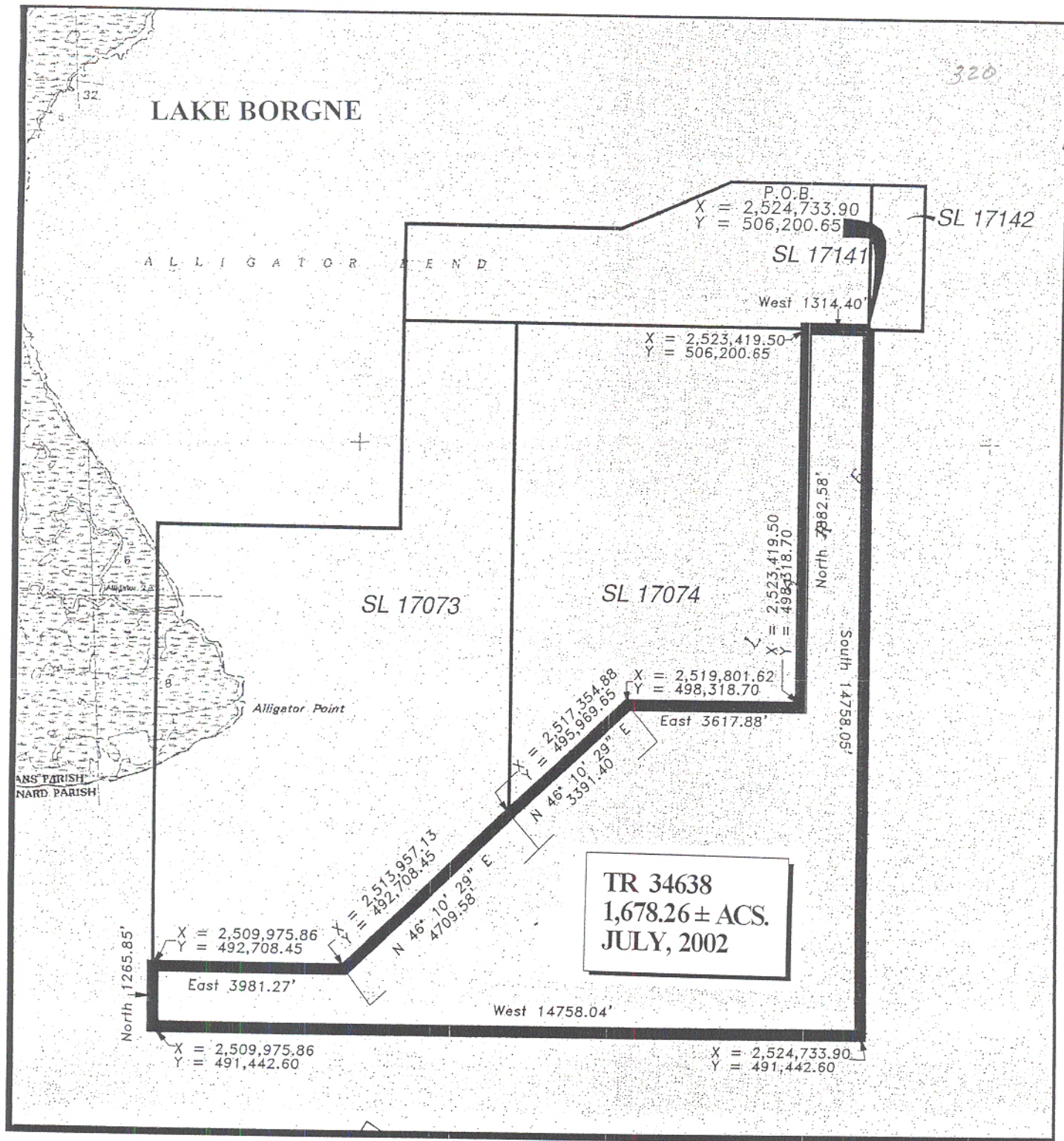
NOTE: The Office of Mineral Resources will require a minimum bonus of \$230 per acre and a minimum royalty of 23%.

NOTE: The Department of Wildlife and Fisheries has designated certain areas in the coastal waters of the State of Louisiana as Oyster Seed Bed Areas. The exact location of those Seed Bed Areas must be obtained from Wildlife and Fisheries and any work done under an oil, gas and other liquid or gaseous mineral lease from the State of Louisiana must be conducted in conformity with the rules and regulations promulgated by the said Department of Wildlife and Fisheries for Oyster Seed Bed Areas.

NOTE: The State of Louisiana does hereby reserve, and this lease shall be subject to, the imprescriptible right of surface use in the nature of a servitude in favor of the Department of Natural Resources and/or the Louisiana Department of Wildlife and Fisheries, including its Offices and Commissions, for the sole purpose of implementing, constructing, servicing and maintaining approved coastal zone management and/or restoration projects. Utilization of any and all rights derived under this lease by the mineral lessee, its agents, successors or assigns, shall not interfere with nor hinder the reasonable surface use by the Department of Natural Resources and/or the Louisiana Department of Wildlife and Fisheries, its Offices or Commissions, as hereinabove reserved.

Applicant: OAPH Consultants





**TRACT 34639 - St. Bernard Parish, Louisiana**

All of the lands now or formerly constituting the beds and bottoms of all water bodies of every nature and description and all islands and other lands formed by accretion or reliction, except tax lands, owned by and not under mineral lease from the State of Louisiana on July 10, 2002, situated in St. Bernard Parish, Louisiana, within the following described boundaries: Beginning at point having Coordinates of X = 2,509,975.86 and Y = 491,442.60; thence East 7,305.65 feet to a point having Coordinates of X = 2,517,281.51 and Y = 491,422.60; thence South 7,379.02 feet to a Northern point on State Lease No. 17009 having Coordinates of X = 2,517,281.51 and Y = 484,063.58; thence along said State Lease No. 17009 the following courses: South 65 degrees 41 minutes 17 seconds West 2,975.75 feet having Coordinates of X = 2,514,569.66 and Y = 482,838.45 and South 34 degrees 26 minutes 55 seconds East 7,462.58 feet having Coordinates of X = 2,518,791.00 and Y = 476,684.56; thence West 8,815.14 feet to the Southern point of State Lease No. 17144 having Coordinates of X = 2,509,975.86 and Y = 476,684.56; thence along said State Lease No. 17144 the following courses: North 65 degrees 07 minutes 30 seconds East 3,177.57 feet having Coordinates of X = 2,512,858.64 and Y = 478,021.17 and North 6,042.41 feet to the Northeast corner of said State Lease No. 17144 and the Southeast corner of State Lease No. 17143 having Coordinates of X = 2,512,858.64 and Y = 484,063.58; thence along said State Lease No. 17143 the following courses: North 1,906.12 feet to a point having Coordinates of X = 2,512,858.64 and Y = 485,969.70 and East 587.01 feet to a point being the Southeast corner of said State Lease No. 17143 and the Southwest corner of State Lease No. 17007 having Coordinates of X = 2,513,445.65 and Y = 485,969.70; thence along said State Lease No. 17007 the following courses: South 60 degrees 22 minutes 09 seconds East 2,099.82 feet having Coordinates of X = 2,515,270.87 and Y = 484,931.53, North 20 degrees 35 minutes 34 seconds East 3,415.00 feet having Coordinates of X = 2,516,472.00 and Y = 488,128.33, North 55 degrees 17 minutes 23 seconds West 2,438.49 feet having Coordinates of X = 2,514,467.46 and Y = 489,516.87, and South 31 degrees 42 minutes 18 seconds West 822.52 feet to a point on said State Lease No. 17007 and the Northeast corner of State Lease No. 17143 having Coordinates of X = 2,514,035.19 and Y = 488,817.10; thence West 4,059.33 feet to the Northwest corner of said State Lease No. 17143 a point having Coordinates of X = 2,509,975.86 and Y = 488,817.10; thence North 2,625.50 feet to the point of beginning, containing approximately **1,347.15 acres**, as shown outlined on a plat on file in the Office of Mineral Resources, Department of Natural Resources, as provided by the applicant. All bearings, distances and coordinates are based on Louisiana Coordinate System of 1927 (South Zone).

NOTE: The above description of the tract nominated for lease has been provided exclusively by the party nominating the tract for lease.

Maps depicting the nominated tract, containing the bearings, distances and coordinates of the nominated tract based on the Louisiana Coordinate System of 1927, North or South Zone, as applicable, are available for public inspection and review at the offices of the Louisiana State Mineral Board from 10:00 a.m. to 3:00 p.m. Monday - Friday.

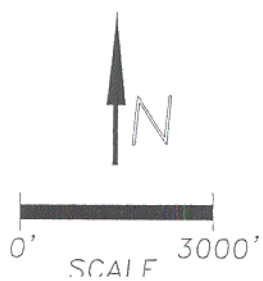
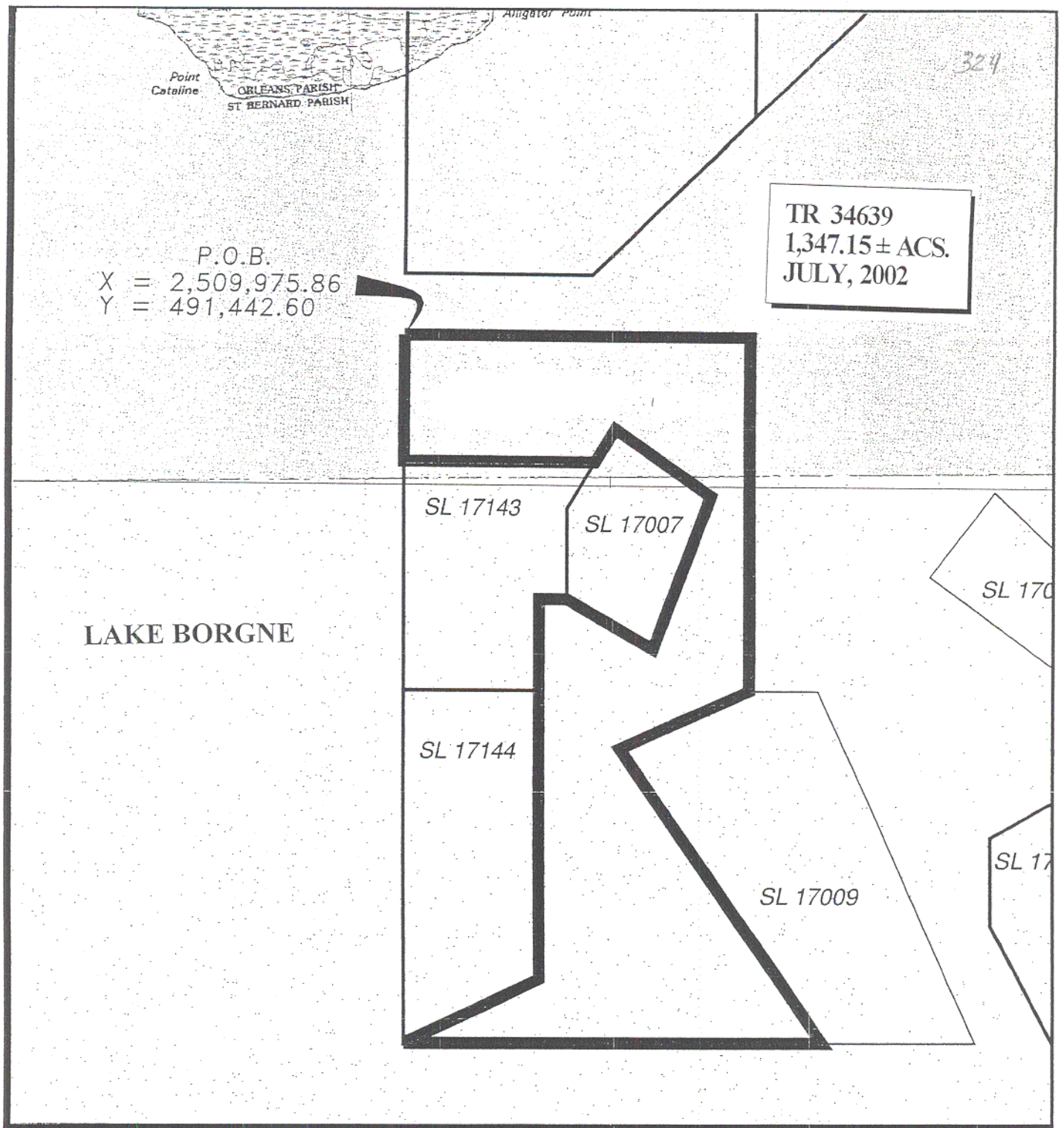
Any mineral lease selected from the nominated tract and awarded by the Louisiana State Mineral Board shall be without warranty of any kind, either express, implied, or statutory, including, but not limited to, the implied warranties or merchantability and fitness for a particular purpose. Should the mineral lease awarded by the Louisiana State Mineral Board be subsequently modified, cancelled or abrogated due to the existence of conflicting leases, operating agreements, private claims or other existing or future obligations or conditions which may affect all or any portion of the leased tract, it shall not relieve the Lessee of the obligation to pay any bonus due thereon to the Louisiana State Mineral Board, nor shall the Louisiana State Mineral Board be obligated to refund any consideration paid by the Lessee prior to such modification, cancellation, or abrogation, including, but not limited to, bonuses, rents and royalties.

NOTE: The Office of Mineral Resources will require a minimum bonus of \$230 per acre and a minimum royalty of 23%.

NOTE: The Department of Wildlife and Fisheries has designated certain areas in the coastal waters of the State of Louisiana as Oyster Seed Bed Areas. The exact location of those Seed Bed Areas must be obtained from Wildlife and Fisheries and any work done under an oil, gas and other liquid or gaseous mineral lease from the State of Louisiana must be conducted in conformity with the rules and regulations promulgated by the said Department of Wildlife and Fisheries for Oyster Seed Bed Areas.

NOTE: The State of Louisiana does hereby reserve, and this lease shall be subject to, the imprescriptible right of surface use in the nature of a servitude in favor of the Department of Natural Resources and/or the Louisiana Department of Wildlife and Fisheries, including its Offices and Commissions, for the sole purpose of implementing, constructing, servicing and maintaining approved coastal zone management and/or restoration projects. Utilization of any and all rights derived under this lease by the mineral lessee, its agents, successors or assigns, shall not interfere with nor hinder the reasonable surface use by the Department of Natural Resources and/or the Louisiana Department of Wildlife and Fisheries, its Offices or Commissions, as hereinabove reserved.

Applicant: OAPH Consultants



ST. BERNARD PARISH

**TRACT 34640 - St. Bernard Parish, Louisiana**

All of the lands now or formerly constituting the beds and bottoms of all water bodies of every nature and description and all islands and other lands formed by accretion or reliction, except tax lands, owned by and not under mineral lease from the State of Louisiana on July 10, 2002, situated in St. Bernard Parish, Louisiana, within the following described boundaries: Beginning at point having Coordinates of X = 2,524,733.90 and Y = 491,442.60; thence South 5,442.13 feet to the Eastern corner of State Lease No. 17008 having Coordinates of X = 2,524,733.90 and Y = 486,000.47; thence along said State Lease No. 17008 the following courses: North 46 degrees 12 minutes 45 seconds West 3,247.37 feet having Coordinates of X = 2,522,389.58 and Y = 488,247.60, South 37 degrees 07 minutes 44 seconds West 2,219.80 feet having Coordinates of X = 2,521,049.69 and Y = 486,477.80, South 53 degrees 14 minutes 37 seconds East 3,806.12 feet having Coordinates of X = 2,524,099.10 and Y = 484,200.16, and North 19 degrees 25 minutes 23 seconds East 1,908.95 feet to a point having Coordinates of X = 2,524,733.90 and Y = 486,000.47; thence South 3,621.55 to the North point of State Lease No. 17010 having Coordinates of X = 2,524,733.90 and Y = 482,378.92; thence along said State Lease No. 17010 the following courses: South 59 degrees 57 minutes 36 seconds West 2,798.27 feet to a point having Coordinates of X = 2,522,311.51 and Y = 480,978.09, South 1,864.84 feet to a point having Coordinates of X = 2,522,311.51 and Y = 479,113.25, South 27 degrees 36 minutes 21 seconds East 2,740.70 feet to the Southwest corner of said State Lease No. 17010 having Coordinates of X = 2,523,581.51 and Y = 476,684.56; thence West 1,600.51 feet to the Southeast corner of State Lease No. 17009 having Coordinates of X = 2,521,981.00 and Y = 476,684.56; thence along said State Lease No. 17009 the following courses: North 23 degrees 52 minutes 05 seconds West 8,069.09 feet having Coordinates of X = 2,518,716.00 and Y = 484,063.58 and West 1,434.49 feet to the Northwest corner of said State Lease No. 17009 having Coordinates of X = 2,517,281.51 and Y = 484,063.58; thence North 7,379.02 feet to a point having Coordinates of X = 2,517,281.51 and Y = 491,442.60; thence East 7,452.39 feet to the point of beginning, containing approximately **1,601.20 acres**, as shown outlined on a plat on file in the Office of Mineral Resources, Department of Natural Resources, as provided by the applicant. All bearings, distances and coordinates are based on Louisiana Coordinate System of 1927 (South Zone).

NOTE: The above description of the tract nominated for lease has been provided exclusively by the party nominating the tract for lease.

Maps depicting the nominated tract, containing the bearings, distances and coordinates of the nominated tract based on the Louisiana Coordinate System of 1927, North or South Zone, as applicable, are available for public inspection and review at the offices of the Louisiana State Mineral Board from 10:00 a.m. to 3:00 p.m. Monday - Friday.

Any mineral lease selected from the nominated tract and awarded by the Louisiana State Mineral Board shall be without warranty of any kind, either express, implied, or statutory, including, but not limited to, the implied warranties or merchantability and fitness for a particular purpose. Should the mineral lease awarded by the Louisiana State Mineral Board be subsequently modified, cancelled or abrogated due to the existence of conflicting leases, operating agreements, private claims or other existing or future obligations or conditions which may affect all or any portion of the leased tract, it shall not relieve the Lessee of the obligation to pay any bonus due thereon to the Louisiana State Mineral Board, nor shall the Louisiana State Mineral Board be obligated to refund any consideration paid by the Lessee prior to such modification, cancellation, or abrogation, including, but not limited to, bonuses, rents and royalties.

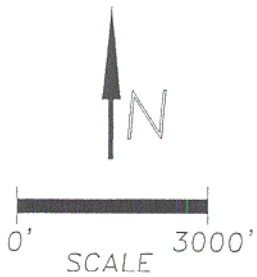
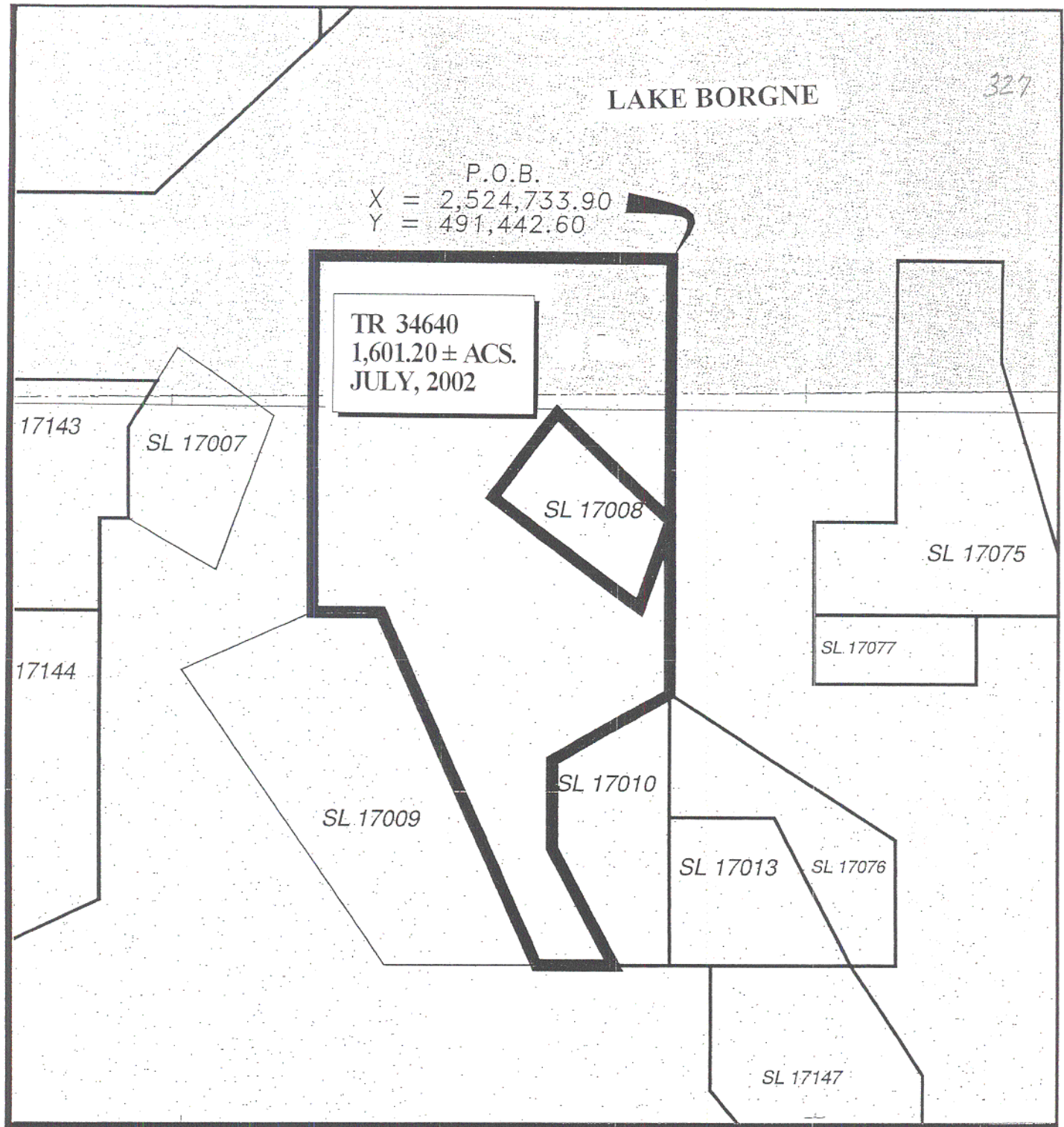
NOTE: The Office of Mineral Resources will require a minimum bonus of \$230 per acre and a minimum royalty of 23%.

NOTE: The Department of Wildlife and Fisheries has designated certain areas in the coastal waters of the State of Louisiana as Oyster Seed Bed Areas. The exact location of those Seed Bed Areas must be obtained from Wildlife and Fisheries and any work done under an oil, gas and other liquid or gaseous mineral lease from the State of Louisiana must be conducted in conformity with the rules and regulations promulgated by the said Department of Wildlife and Fisheries for Oyster Seed Bed Areas.

NOTE: The State of Louisiana does hereby reserve, and this lease shall be subject to, the imprescriptible right of surface use in the nature of a servitude in favor of the Department of Natural Resources and/or the Louisiana Department of Wildlife and Fisheries, including its Offices and Commissions, for the sole purpose of implementing, constructing, servicing and maintaining approved coastal zone management and/or restoration projects. Utilization of any and all rights derived under this lease by the mineral lessee, its agents, successors or assigns, shall not interfere with nor hinder the reasonable surface use by the Department of Natural Resources and/or the Louisiana Department of Wildlife and Fisheries, its Offices or Commissions, as hereinabove reserved.

Applicant: OAPH Consultants







**TRACT 34641 - St. Bernard Parish, Louisiana**

All of the lands now or formerly constituting the beds and bottoms of all water bodies of every nature and description and all islands and other lands formed by accretion or reliction, except tax lands, owned by and not under mineral lease from the State of Louisiana on July 10, 2002, situated in St. Bernard Parish, Louisiana, within the following described boundaries: Beginning at a point having Coordinates of X = 2,509,975.86 and Y = 476,684.56; thence East 7,379.02 feet to a point having Coordinates of X = 2,517,354.88 and Y = 476,684.56; thence South 5,550.56 feet to a point being the Northeast corner of State Lease No. 17145 having Coordinates of X = 2,517,354.88 and Y = 471,134.00; thence along said State Lease No. 17145 the following courses: North 73 degrees 19 minutes 34 seconds West 5,248.82 feet to a point having Coordinates of X = 2,512,326.75 and Y = 472,640.01 and South 1,475.77 feet to the Northernmost Southwest corner of said State Lease No. 17145 and the most Northern point of State Lease No. 17011 having Coordinates of X = 2,512,326.75 and Y = 471,164.24; thence along said State Lease No. 17011 the following courses: South 12 degrees 15 minutes 39 seconds West 2,506.34 feet to a point having Coordinates of X = 2,511,794.50 and Y = 468,715.07, South 15 degrees 15 minutes 51 seconds East 3,359.74 feet to a point having Coordinates of X = 2,512,679.02 and Y = 465,473.86 and East 1,689.35 feet along the Southern boundary of said State Lease No. 17011 to a point being the Northwest corner of State Lease No. 17145 having Coordinates of X = 2,514,368.37 and Y = 465,473.86; thence along said State Lease No. 17145 the following courses: South 55 degrees 06 minutes 44 seconds East 1,384.45 feet to a point having Coordinates of X = 2,515,504.00 and Y = 464,682.00 and East 1,850.88 feet to the Southeast corner of said State Lease No. 17145 having Coordinates of X = 2,517,354.88 and Y = 464,682.00; thence South 2,755.49 feet to a point having Coordinates of X = 2,517,354.88 and Y = 461,926.51; thence West 7,379.02 feet to a point having Coordinates of X = 2,509,975.86 and Y = 461,926.51; thence North 14,758.05 feet to the point of beginning, containing approximately **1,599.59 acres**, as shown outlined on a plat on file in the Office of Mineral Resources, Department of Natural Resources, as provided by the applicant. All bearings, distances and coordinates are based on Louisiana Coordinate System of 1927 (South Zone).

NOTE: The above description of the tract nominated for lease has been provided exclusively by the party nominating the tract for lease.

Maps depicting the nominated tract, containing the bearings, distances and coordinates of the nominated tract based on the Louisiana Coordinate System of 1927, North or South Zone, as applicable, are available for public inspection and review at the offices of the Louisiana State Mineral Board from 10:00 a.m. to 3:00 p.m. Monday - Friday.

Any mineral lease selected from the nominated tract and awarded by the Louisiana State Mineral Board shall be without warranty of any kind, either express, implied, or statutory, including, but not limited to, the implied warranties or merchantability and fitness for a particular purpose. Should the mineral lease awarded by the Louisiana State Mineral Board be subsequently modified, cancelled or abrogated due to the existence of conflicting leases, operating agreements, private claims or other existing or future obligations or conditions which may affect all or any portion of the leased tract, it shall not relieve the Lessee of the obligation to pay any bonus due thereon to the Louisiana State Mineral Board, nor shall the Louisiana State Mineral Board be obligated to refund any consideration paid by the Lessee prior to such modification, cancellation, or abrogation, including, but not limited to, bonuses, rents and royalties.

NOTE: The Office of Mineral Resources will require a minimum bonus of \$230 per acre and a minimum royalty of 23%.

NOTE: The Department of Wildlife and Fisheries has designated certain areas in the coastal waters of the State of Louisiana as Oyster Seed Bed Areas. The exact location of those Seed Bed Areas must be obtained from Wildlife and Fisheries and any work done under an oil, gas and other liquid or gaseous mineral lease from the State of Louisiana must be conducted in conformity with the rules and regulations promulgated by the said Department of Wildlife and Fisheries for Oyster Seed Bed Areas.

NOTE: The State of Louisiana does hereby reserve, and this lease shall be subject to, the imprescriptible right of surface use in the nature of a servitude in favor of the Department of Natural Resources and/or the Louisiana Department of Wildlife and Fisheries, including its Offices and Commissions, for the sole purpose of implementing, constructing, servicing and maintaining approved coastal zone management and/or restoration projects. Utilization of any and all rights derived under this lease by the mineral lessee, its agents, successors or assigns, shall not interfere with nor hinder the reasonable surface use by the Department of Natural Resources and/or the Louisiana Department of Wildlife and Fisheries, its Offices or Commissions, as hereinabove reserved.

Applicant: OAPH Consultants

P.O.B.  
X = 2,509,975.86  
Y = 476,684.56

SL 17009

SL 17010

TR 34641  
1,599.59 ± ACS.  
JULY, 2002

East 7379.02'

X = 2,517,354.88  
Y = 476,684.56

South 5550.56'

SL 17145

X = 2,517,354.88  
Y = 471,134.00

SL 17011

SL 17146

SL 17012

North 14758.05'

X = 2,512,679.02  
Y = 465,473.86

X = 2,514,368.32  
Y = 465,473.86

X = 2,515,504.00  
Y = 464,682.00

X = 2,517,354.88  
Y = 464,682.00

South 2755.49'

West 7379.02'

X = 2,509,975.86  
Y = 461,926.51

X = 2,517,354.88  
Y = 461,926.51

LAKE BORGNE



0' SCALE 3000'

St. Bernard Parish, LA

**TRACT 34642 - St. Bernard Parish, Louisiana**

All of the lands now or formerly constituting the beds and bottoms of all water bodies of every nature and description and all islands and other lands formed by accretion or reliction, except tax lands, owned by and not under mineral lease from the State of Louisiana on July 10, 2002, situated in St. Bernard Parish, Louisiana, within the following described boundaries: Beginning at a point being the Southeast corner of State Lease No. 17010 having Coordinates of X = 2,524,733.90 and Y = 476,684.56; thence South 8,120.88 feet to a point having Coordinates of X = 2,524,733.90 and Y = 468,563.68; thence West 1,019.86 feet to the Southeast corner of State Lease No. 17146 and the Northeast corner of State Lease No. 17012 having Coordinates of X = 2,523,714.04 and Y = 468,563.68; thence along said State Lease No. 17146 the following courses: North 1,200.00 feet, West 2,196.21 feet and South 1,200.00 feet to the Southwest corner of said State Lease No. 17146 and the Northwest corner of said State Lease No. 17012 having Coordinates of X = 2,521,517.83 and Y = 468,563.68; thence West 4,162.95 feet to a point on the East boundary of State Lease No. 17145 having Coordinates of X = 2,517,354.88 and Y = 468,563.68; thence North 2,570.32 feet along the East boundary of said State Lease No. 17145 to its Northeast corner having Coordinates of X = 2,517,354.88 and Y = 471,134.00; thence North 5,550.56 feet to a point having Coordinates of X = 2,517,354.88 and Y = 476,684.56; thence East 1,436.12 feet to the Southwest corner of State Lease No. 17009 having Coordinates of X = 2,518,791.00 and Y = 476,684.56; thence East 3,190.00 feet along the South boundary and to a point being the Southeast corner of said State Lease No. 17009 having Coordinates of X = 2,521,981.00 and Y = 476,684.56; thence East 1,600.51 feet to the Southwest corner of said State Lease No. 17010 having Coordinates of X = 2,523,581.51 and Y = 476,684.56; thence East 1,152.39 feet along the South boundary of said State Lease No. 17010 to the point of beginning, containing approximately **1,315.17 acres**, as shown outlined on a plat on file in the Office of Mineral Resources, Department of Natural Resources, as provided by the applicant. All bearings, distances and coordinates are based on Louisiana Coordinate System of 1927 (South Zone).

NOTE: The above description of the tract nominated for lease has been provided exclusively by the party nominating the tract for lease.

Maps depicting the nominated tract, containing the bearings, distances and coordinates of the nominated tract based on the Louisiana Coordinate System of 1927, North or South Zone, as applicable, are available for public inspection and review at the offices of the Louisiana State Mineral Board from 10:00 a.m. to 3:00 p.m. Monday - Friday.

Any mineral lease selected from the nominated tract and awarded by the Louisiana State Mineral Board shall be without warranty of any kind, either express, implied, or statutory, including, but not limited to, the

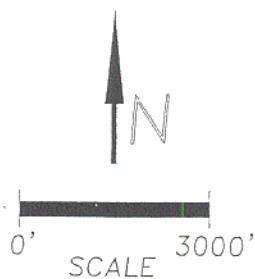
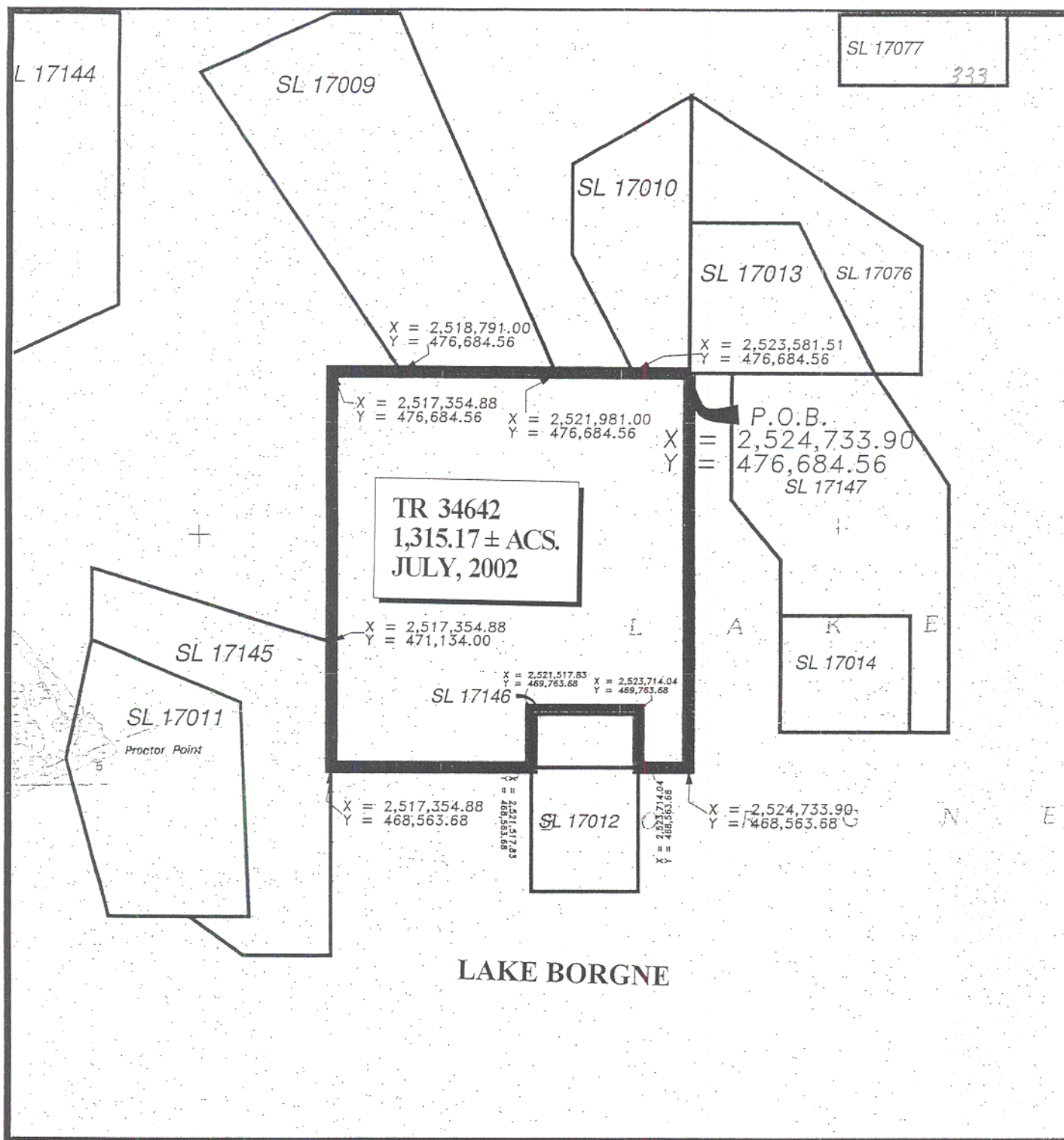
implied warranties or merchantability and fitness for a particular purpose. Should the mineral lease awarded by the Louisiana State Mineral Board be subsequently modified, cancelled or abrogated due to the existence of conflicting leases, operating agreements, private claims or other existing or future obligations or conditions which may affect all or any portion of the leased tract, it shall not relieve the Lessee of the obligation to pay any bonus due thereon to the Louisiana State Mineral Board, nor shall the Louisiana State Mineral Board be obligated to refund any consideration paid by the Lessee prior to such modification, cancellation, or abrogation, including, but not limited to, bonuses, rents and royalties.

NOTE: The Office of Mineral Resources will require a minimum bonus of \$230 per acre and a minimum royalty of 23%.

NOTE: The Department of Wildlife and Fisheries has designated certain areas in the coastal waters of the State of Louisiana as Oyster Seed Bed Areas. The exact location of those Seed Bed Areas must be obtained from Wildlife and Fisheries and any work done under an oil, gas and other liquid or gaseous mineral lease from the State of Louisiana must be conducted in conformity with the rules and regulations promulgated by the said Department of Wildlife and Fisheries for Oyster Seed Bed Areas.

NOTE: The State of Louisiana does hereby reserve, and this lease shall be subject to, the imprescriptible right of surface use in the nature of a servitude in favor of the Department of Natural Resources and/or the Louisiana Department of Wildlife and Fisheries, including its Offices and Commissions, for the sole purpose of implementing, constructing, servicing and maintaining approved coastal zone management and/or restoration projects. Utilization of any and all rights derived under this lease by the mineral lessee, its agents, successors or assigns, shall not interfere with nor hinder the reasonable surface use by the Department of Natural Resources and/or the Louisiana Department of Wildlife and Fisheries, its Offices or Commissions, as hereinabove reserved.

Applicant: OAPH Consultants



ST. BERNARD PARISH



**TRACT 34643 - St. Bernard Parish, Louisiana**

All of the lands now or formerly constituting the beds and bottoms of all water bodies of every nature and description and all islands and other lands formed by accretion or reliction, except tax lands, owned by and not under mineral lease from the State of Louisiana on July 10, 2002, situated in St. Bernard Parish, Louisiana, within the following described boundaries: Beginning at a point having Coordinates of X = 2,524,733.90 and Y = 461,926.51; thence West 7,379.02 feet to a point having Coordinates of X = 2,517,354.88 and Y = 461,926.51; thence North 2,755.49 feet to the Southeast corner of State Lease No. 17145 having Coordinates of X = 2,517,354.88 and Y = 464,682.00; thence North 3,881.68 feet along the East boundary of said State Lease No. 17145 to a point having Coordinates of X = 2,517,354.88 and Y = 468,563.68; thence East 4,162.95 feet to a point being the Southwest corner of State Lease No. 17146 and the Northwest corner of State Lease No. 17012 having Coordinates of X = 2,521,517.83 and Y = 468,563.68; thence along said State Lease No. 17012 the following courses: South 2,561.32 to Coordinates of X = 2,521,517.83 and Y = 466,002.36, East 2,196.21 feet to Coordinates of X = 2,523,714.04 and Y = 466,002.36, and North 2,561.32 feet to a point being the Southeast corner of State Lease No. 17146 and the Northeast corner of State Lease No. 17012 having Coordinates of X = 2,523,714.04 and Y = 468,563.68; thence East 1,019.86 feet to a point having Coordinates of X = 2,524,733.90 and Y = 468,563.68, thence South 6,637.17 feet to the point of beginning, containing approximately **995.19 acres**, as shown outlined on a plat on file in the Office of Mineral Resources, Department of Natural Resources, as provided by the applicant. All bearings, distances and coordinates are based on Louisiana Coordinate System of 1927 (South Zone).

NOTE: The above description of the tract nominated for lease has been provided exclusively by the party nominating the tract for lease.

Maps depicting the nominated tract, containing the bearings, distances and coordinates of the nominated tract based on the Louisiana Coordinate System of 1927, North or South Zone, as applicable, are available for public inspection and review at the offices of the Louisiana State Mineral Board from 10:00 a.m. to 3:00 p.m. Monday - Friday.

Any mineral lease selected from the nominated tract and awarded by the Louisiana State Mineral Board shall be without warranty of any kind, either express, implied, or statutory, including, but not limited to, the implied warranties or merchantability and fitness for a particular purpose. Should the mineral lease awarded by the Louisiana State Mineral Board be subsequently modified, cancelled or abrogated due to the existence of conflicting leases, operating agreements, private claims or other existing of future obligations or conditions which may affect all or any portion of the leased tract, it shall not relieve the Lessee of the obligation to pay any bonus due thereon to the Louisiana State Mineral

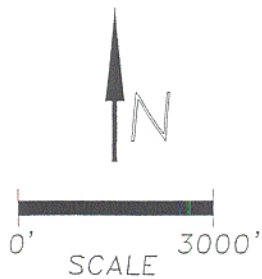
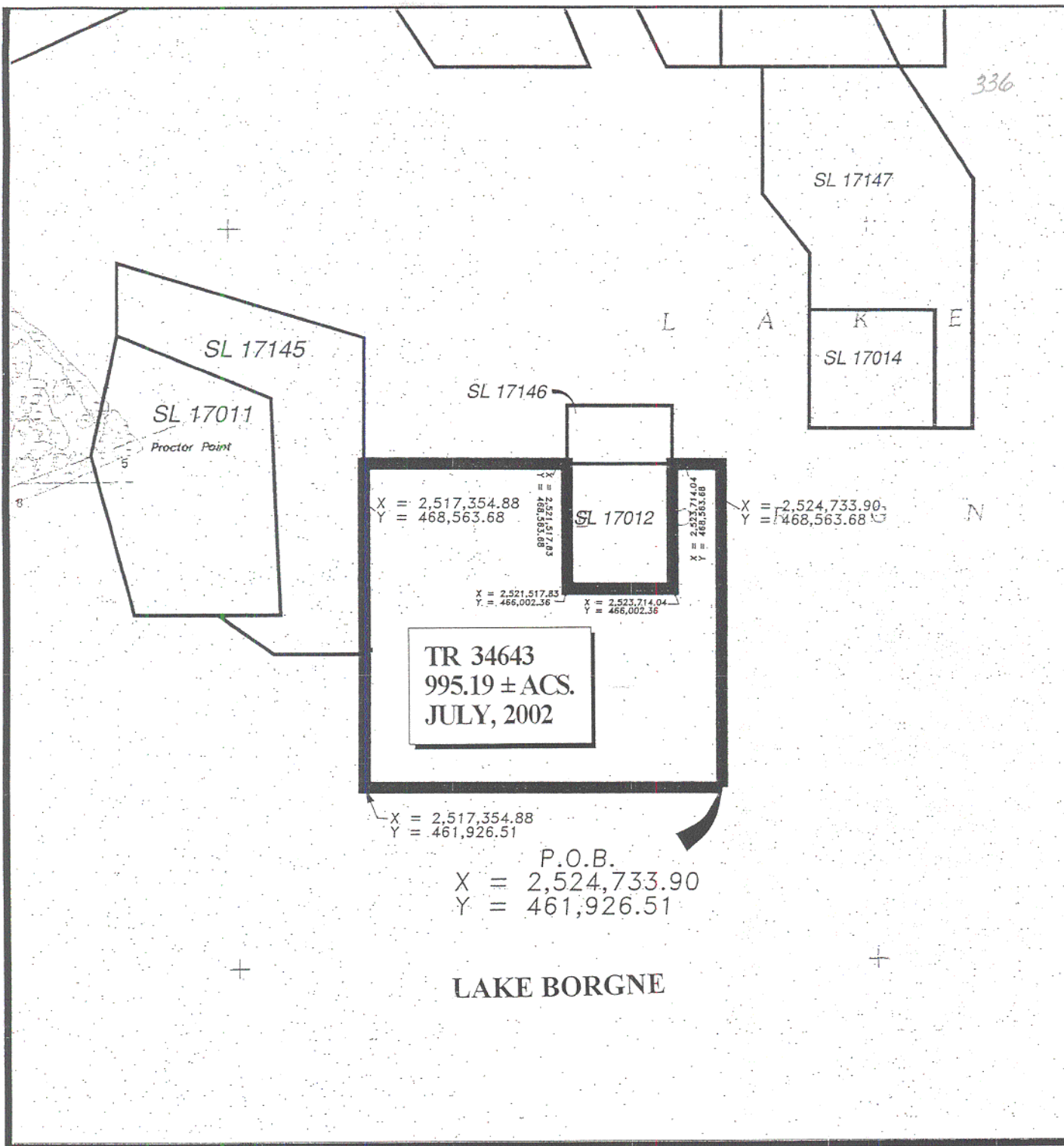
Board, nor shall the Louisiana State Mineral Board be obligated to refund any consideration paid by the Lessee prior to such modification, cancellation, or abrogation, including, but not limited to, bonuses, rents and royalties.

NOTE: The Office of Mineral Resources will require a minimum bonus of \$230 per acre and a minimum royalty of 23%.

NOTE: The Department of Wildlife and Fisheries has designated certain areas in the coastal waters of the State of Louisiana as Oyster Seed Bed Areas. The exact location of those Seed Bed Areas must be obtained from Wildlife and Fisheries and any work done under an oil, gas and other liquid or gaseous mineral lease from the State of Louisiana must be conducted in conformity with the rules and regulations promulgated by the said Department of Wildlife and Fisheries for Oyster Seed Bed Areas.

NOTE: The State of Louisiana does hereby reserve, and this lease shall be subject to, the imprescriptible right of surface use in the nature of a servitude in favor of the Department of Natural Resources and/or the Louisiana Department of Wildlife and Fisheries, including its Offices and Commissions, for the sole purpose of implementing, constructing, servicing and maintaining approved coastal zone management and/or restoration projects. Utilization of any and all rights derived under this lease by the mineral lessee, its agents, successors or assigns, shall not interfere with nor hinder the reasonable surface use by the Department of Natural Resources and/or the Louisiana Department of Wildlife and Fisheries, its Offices or Commissions, as hereinabove reserved.

Applicant: OAPH Consultants



ST. BERNARD PARISH

**TRACT 34644 - St. Bernard Parish, Louisiana**

All of the lands now or formerly constituting the beds and bottoms of all water bodies of every nature and description and all islands and other lands formed by accretion or reliction, except tax lands, owned by and not under mineral lease from the State of Louisiana on July 10, 2002, situated in St. Bernard Parish, Louisiana, within the following described boundaries: Beginning at a point having Coordinates of X = 2,524,733.90 and Y = 461,926.51; thence South 7,379.03 feet to a point having Coordinates of X = 2,524,733.90 and Y = 454,547.48; thence West 14,758.04 feet to a point having Coordinates of X = 2,509,975.86 and Y = 454,547.48; thence North 7,379.03 feet to a point having Coordinates of X = 2,509,975.86 and Y = 461,926.51; thence East 14,758.04 feet to the point of beginning, containing approximately **2,500.00 acres**, as shown outlined on a plat on file in the Office of Mineral Resources, Department of Natural Resources, as provided by the applicant. All bearings, distances and coordinates are based on Louisiana Coordinate System of 1927 (South Zone).

NOTE: The above description of the tract nominated for lease has been provided exclusively by the party nominating the tract for lease.

Maps depicting the nominated tract, containing the bearings, distances and coordinates of the nominated tract based on the Louisiana Coordinate System of 1927, North or South Zone, as applicable, are available for public inspection and review at the offices of the Louisiana State Mineral Board from 10:00 a.m. to 3:00 p.m. Monday - Friday.

Any mineral lease selected from the nominated tract and awarded by the Louisiana State Mineral Board shall be without warranty of any kind, either express, implied, or statutory, including, but not limited to, the implied warranties or merchantability and fitness for a particular purpose. Should the mineral lease awarded by the Louisiana State Mineral Board be subsequently modified, cancelled or abrogated due to the existence of conflicting leases, operating agreements, private claims or other existing or future obligations or conditions which may affect all or any portion of the leased tract, it shall not relieve the Lessee of the obligation to pay any bonus due thereon to the Louisiana State Mineral Board, nor shall the Louisiana State Mineral Board be obligated to refund any consideration paid by the Lessee prior to such modification, cancellation, or abrogation, including, but not limited to, bonuses, rents and royalties.

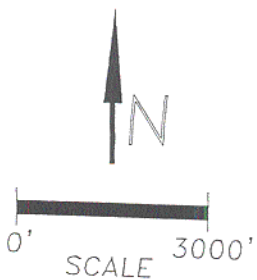
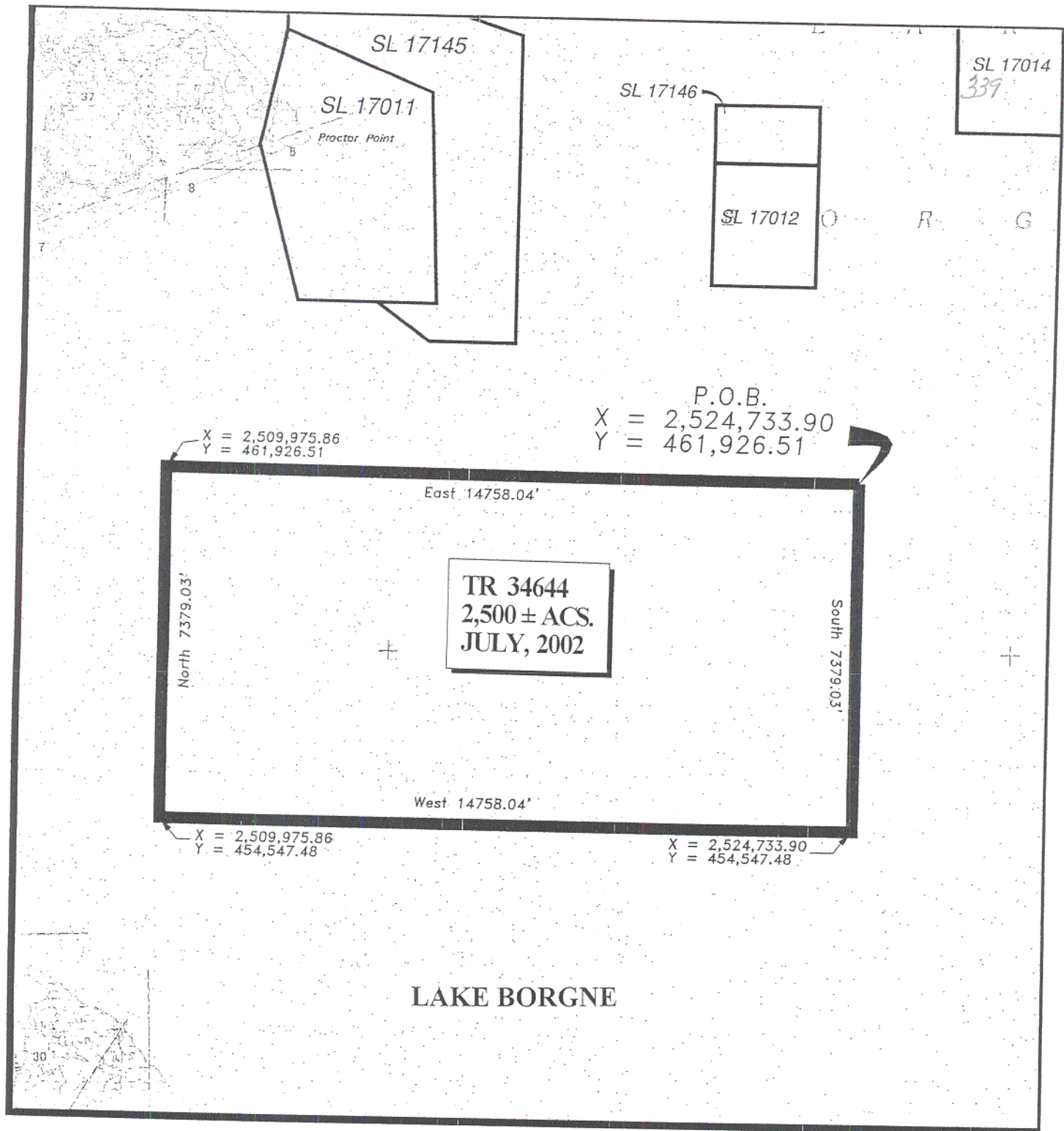
NOTE: The Office of Mineral Resources will require a minimum bonus of \$230 per acre and a minimum royalty of 23%.

NOTE: The Department of Wildlife and Fisheries has designated certain areas in the coastal waters of the State of Louisiana as Oyster Seed Bed

Areas. The exact location of those Seed Bed Areas must be obtained from Wildlife and Fisheries and any work done under an oil, gas and other liquid or gaseous mineral lease from the State of Louisiana must be conducted in conformity with the rules and regulations promulgated by the said Department of Wildlife and Fisheries for Oyster Seed Bed Areas.

NOTE: The State of Louisiana does hereby reserve, and this lease shall be subject to, the imprescriptible right of surface use in the nature of a servitude in favor of the Department of Natural Resources and/or the Louisiana Department of Wildlife and Fisheries, including its Offices and Commissions, for the sole purpose of implementing, constructing, servicing and maintaining approved coastal zone management and/or restoration projects. Utilization of any and all rights derived under this lease by the mineral lessee, its agents, successors or assigns, shall not interfere with nor hinder the reasonable surface use by the Department of Natural Resources and/or the Louisiana Department of Wildlife and Fisheries, its Offices or Commissions, as hereinabove reserved.

Applicant: OAPH Consultants





**TRACT 34645 - St. Bernard Parish, Louisiana**

All of the lands now or formerly constituting the beds and bottoms of all water bodies of every nature and description and all islands and other lands formed by accretion or reliction, except tax lands, owned by and not under mineral lease from the State of Louisiana on July 10, 2002, situated in St. Bernard Parish, Louisiana, within the following described boundaries: Beginning at a point having Coordinates of X = 2,524,733.90 and Y = 447,168.45; thence West 14,758.04 feet to a point having Coordinates of X = 2,509,975.86 and Y = 447,168.45; thence North 7,379.02 feet to a point having Coordinates of X = 2,509,975.86 and Y = 454,547.43; thence East 14,758.04 feet to a point having Coordinates of X = 2,524,733.90 and Y = 454,547.48; thence South 7,379.03 feet to the point of beginning, containing approximately **2,453 acres**, as shown outlined on a plat on file in the Office of Mineral Resources, Department of Natural Resources, as provided by the applicant. All bearings, distances and coordinates are based on Louisiana Coordinate System of 1927 (South Zone).

NOTE: The above description of the tract nominated for lease has been provided exclusively by the party nominating the tract for lease.

Maps depicting the nominated tract, containing the bearings, distances and coordinates of the nominated tract based on the Louisiana Coordinate System of 1927, North or South Zone, as applicable, are available for public inspection and review at the offices of the Louisiana State Mineral Board from 10:00 a.m. to 3:00 p.m. Monday - Friday.

Any mineral lease selected from the nominated tract and awarded by the Louisiana State Mineral Board shall be without warranty of any kind, either express, implied, or statutory, including, but not limited to, the implied warranties or merchantability and fitness for a particular purpose. Should the mineral lease awarded by the Louisiana State Mineral Board be subsequently modified, cancelled or abrogated due to the existence of conflicting leases, operating agreements, private claims or other existing or future obligations or conditions which may affect all or any portion of the leased tract, it shall not relieve the Lessee of the obligation to pay any bonus due thereon to the Louisiana State Mineral Board, nor shall the Louisiana State Mineral Board be obligated to refund any consideration paid by the Lessee prior to such modification, cancellation, or abrogation, including, but not limited to, bonuses, rents and royalties.

NOTE: The Office of Mineral Resources will require a minimum bonus of \$230 per acre and a minimum royalty of 23%.

NOTE: The Department of Wildlife and Fisheries has designated certain areas in the coastal waters of the State of Louisiana as Oyster Seed Bed Areas. The exact location of those Seed Bed Areas must be obtained from

Wildlife and Fisheries and any work done under an oil, gas and other liquid or gaseous mineral lease from the State of Louisiana must be conducted in conformity with the rules and regulations promulgated by the said Department of Wildlife and Fisheries for Oyster Seed Bed Areas.

NOTE: The State of Louisiana does hereby reserve, and this lease shall be subject to, the imprescriptible right of surface use in the nature of a servitude in favor of the Department of Natural Resources and/or the Louisiana Department of Wildlife and Fisheries, including its Offices and Commissions, for the sole purpose of implementing, constructing, servicing and maintaining approved coastal zone management and/or restoration projects. Utilization of any and all rights derived under this lease by the mineral lessee, its agents, successors or assigns, shall not interfere with nor hinder the reasonable surface use by the Department of Natural Resources and/or the Louisiana Department of Wildlife and Fisheries, its Offices or Commissions, as hereinabove reserved.

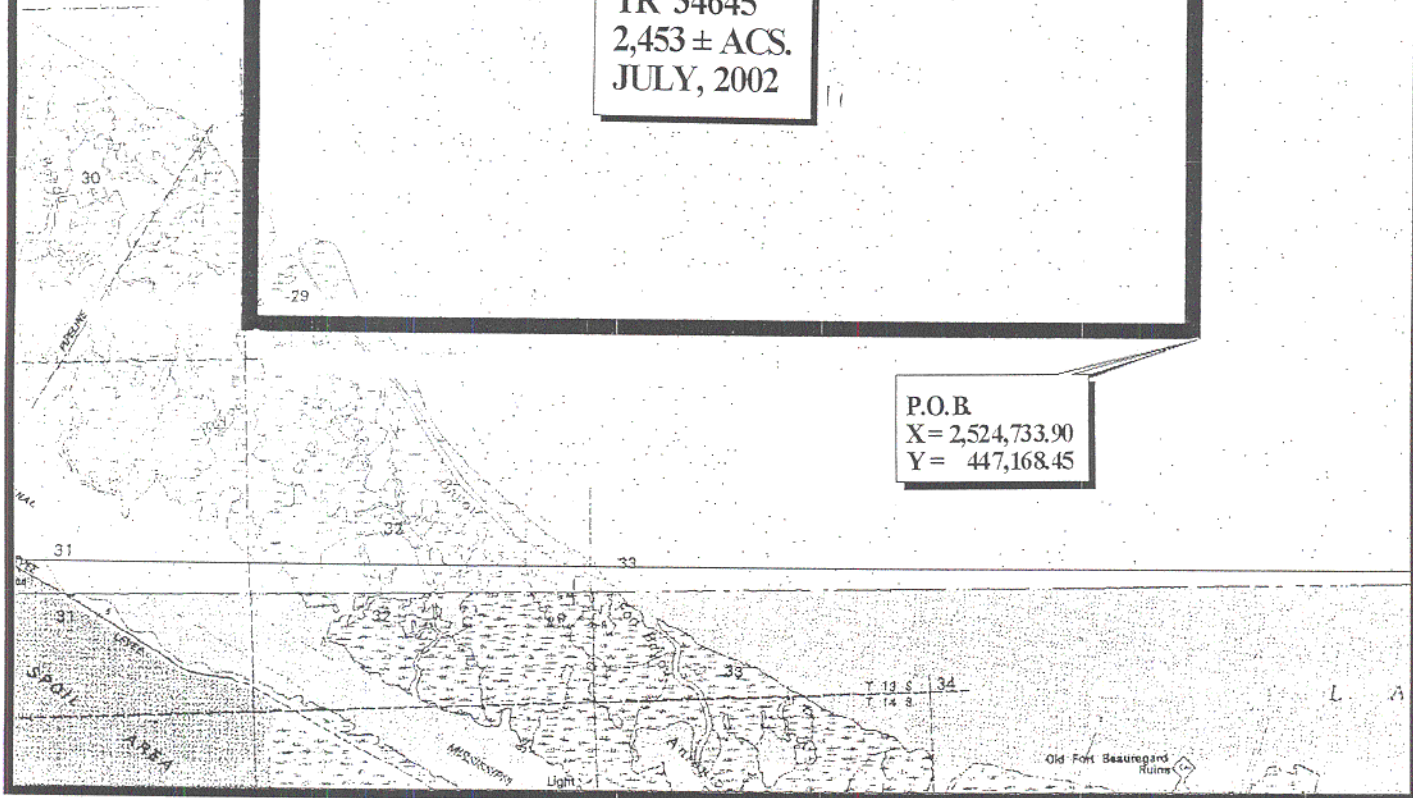
Applicant: OAPH Consultants

342

# LAKE BORGNE

TR 34645  
2,453 ± ACS.  
JULY, 2002

P.O.B  
X= 2,524,733.90  
Y= 447,168.45



0' 3000'  
SCALE

ST. BERNARD PARISH

**TRACT 34646 - PORTION OF BLOCK 28, NORTH LAKE BORGNE AREA, Orleans and St. Bernard Parishes, Louisiana**

All of the lands now or formerly constituting the beds and bottoms of all water bodies of every nature and description and all islands and other lands formed by accretion or reliction, except tax lands, belonging to the State of Louisiana and not under mineral lease on July 10, 2002, situated in Orleans and St. Bernard Parishes, Louisiana, and more particularly described as follows: Beginning at the Southeast corner of Block 28, North Lake Borgne Area, having Coordinates of X = 2,536,250.00 and Y = 520,958.70; thence West 12,440.00 feet on the South line of said Block 28 to a point having Coordinates of X = 2,523,810.00 and Y = 520,958.70; thence North 9,000.00 feet to a point on the North line of said Block 28 having Coordinates of X = 2,523,810.00 and Y = 529,958.70; thence East 12,440.00 feet on the North line of said Block 28 to its Northeast corner having Coordinates of X = 2,536,250.00 and Y = 529,958.70; thence South 9,000.00 feet on the East line of said Block 28 to the point of beginning, containing approximately **2,498 acres**, as shown outlined on a plat on file in the Office of Mineral Resources, Department of Natural Resources, as provided by the applicant. All bearings, distances and coordinates are based on Louisiana Coordinate System of 1927 (South Zone).

NOTE: The above description of the tract nominated for lease has been provided exclusively by the party nominating the tract for lease.

Maps depicting the nominated tract, containing the bearings, distances and coordinates of the nominated tract based on the Louisiana Coordinate System of 1927, North or South Zone, as applicable, are available for public inspection and review at the offices of the Louisiana State Mineral Board from 10:00 a.m. to 3:00 p.m. Monday - Friday.

Any mineral lease selected from the nominated tract and awarded by the Louisiana State Mineral Board shall be without warranty of any kind, either express, implied, or statutory, including, but not limited to, the implied warranties or merchantability and fitness for a particular purpose. Should the mineral lease awarded by the Louisiana State Mineral Board be subsequently modified, cancelled or abrogated due to the existence of conflicting leases, operating agreements, private claims or other existing or future obligations or conditions which may affect all or any portion of the leased tract, it shall not relieve the Lessee of the obligation to pay any bonus due thereon to the Louisiana State Mineral Board, nor shall the Louisiana State Mineral Board be obligated to refund any consideration paid by the Lessee prior to such modification, cancellation, or abrogation, including, but not limited to, bonuses, rents and royalties.

NOTE: The Office of Mineral Resources will require a minimum bonus of \$230 per acre and a minimum royalty of 23%.

NOTE: The Department of Wildlife and Fisheries has designated certain areas in the coastal waters of the State of Louisiana as Oyster Seed Bed Areas. The exact location of those Seed Bed Areas must be obtained from Wildlife and Fisheries and any work done under an oil, gas and other liquid or gaseous mineral lease from the State of Louisiana must be conducted in conformity with the rules and regulations promulgated by the said Department of Wildlife and Fisheries for Oyster Seed Bed Areas.

NOTE: The State of Louisiana does hereby reserve, and this lease shall be subject to, the imprescriptible right of surface use in the nature of a servitude in favor of the Department of Natural Resources and/or the Louisiana Department of Wildlife and Fisheries, including its Offices and Commissions, for the sole purpose of implementing, constructing, servicing and maintaining approved coastal zone management and/or restoration projects. Utilization of any and all rights derived under this lease by the mineral lessee, its agents, successors or assigns, shall not interfere with nor hinder the reasonable surface use by the Department of Natural Resources and/or the Louisiana Department of Wildlife and Fisheries, its Offices or Commissions, as hereinabove reserved.

Applicant: OAPH Consultants

R15E

345

BIK. 27

BIK. 22

Big D.  
Lake

ORLEANS PARISH  
BERNARD PARISH

14

TR 34646  
2,498 ± ACS.  
JULY, 2002

BIK. 28

BIK. 21

P. O. B.  
X=2,536,250.00  
Y= 520,958.70

LAKE + BORGNE

Shell Point

SHELL POINT GAS FIELD

LAMBERT LA. SOUTH ZONE

NAD 27

Topography obtained from USC&GS Quadrangle  
"ALLIGATOR POINT, LA.", 1994 Edition.

Orleans & St. Bernard Parishes, Louisiana

3000' 0' 3000'



**TRACT 34647 - PORTION OF BLOCK 21, NORTH LAKE BORGNE AREA, St. Bernard Parish, Louisiana**

All of the lands now or formerly constituting the beds and bottoms of all water bodies of every nature and description and all islands and other lands formed by accretion or reliction, except tax lands, belonging to the State of Louisiana and not under mineral lease on July 10, 2002, situated in St. Bernard Parish, Louisiana, and more particularly described as follows: Beginning at the Northwest corner of Block 21, North Lake Borgne Area, having Coordinates of X = 2,536,250.00 and Y = 529,958.70; thence East 9,000.00 feet to a point having Coordinates of X = 2,545,250.00 and Y = 529,958.70; thence South 9,000.00 feet to a point having Coordinates of X = 2,545,250.00 and Y = 520,958.70; thence West 9,000.00 feet to a point having Coordinates of X = 2,536,250.00 and Y = 520,958.70; thence North 9,000.00 feet to the point of beginning, containing approximately **1,859.50 acres**, as shown outlined on a plat on file in the Office of Mineral Resources, Department of Natural Resources, as provided by the applicant. All bearings, distances and coordinates are based on Louisiana Coordinate System of 1927 (South Zone).

NOTE: The above description of the tract nominated for lease has been provided exclusively by the party nominating the tract for lease.

Maps depicting the nominated tract, containing the bearings, distances and coordinates of the nominated tract based on the Louisiana Coordinate System of 1927, North or South Zone, as applicable, are available for public inspection and review at the offices of the Louisiana State Mineral Board from 10:00 a.m. to 3:00 p.m. Monday - Friday.

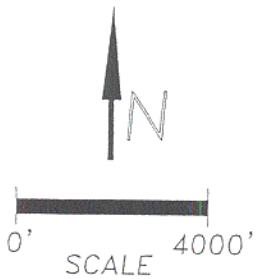
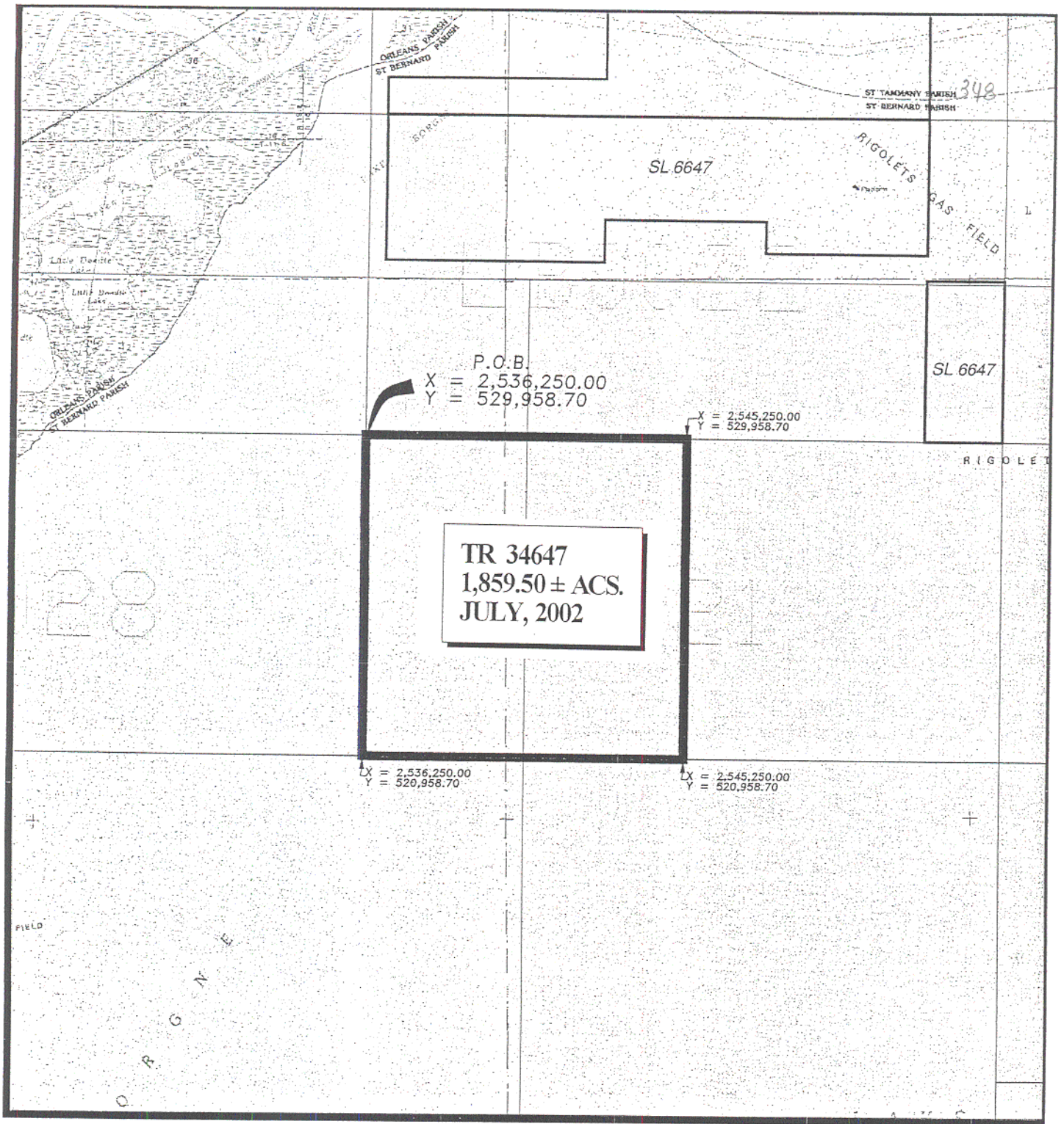
Any mineral lease selected from the nominated tract and awarded by the Louisiana State Mineral Board shall be without warranty of any kind, either express, implied, or statutory, including, but not limited to, the implied warranties or merchantability and fitness for a particular purpose. Should the mineral lease awarded by the Louisiana State Mineral Board be subsequently modified, cancelled or abrogated due to the existence of conflicting leases, operating agreements, private claims or other existing or future obligations or conditions which may affect all or any portion of the leased tract, it shall not relieve the Lessee of the obligation to pay any bonus due thereon to the Louisiana State Mineral Board, nor shall the Louisiana State Mineral Board be obligated to refund any consideration paid by the Lessee prior to such modification, cancellation, or abrogation, including, but not limited to, bonuses, rents and royalties.

NOTE: The Office of Mineral Resources will require a minimum bonus of \$230 per acre and a minimum royalty of 23%.

NOTE: The Department of Wildlife and Fisheries has designated certain areas in the coastal waters of the State of Louisiana as Oyster Seed Bed Areas. The exact location of those Seed Bed Areas must be obtained from Wildlife and Fisheries and any work done under an oil, gas and other liquid or gaseous mineral lease from the State of Louisiana must be conducted in conformity with the rules and regulations promulgated by the said Department of Wildlife and Fisheries for Oyster Seed Bed Areas.

NOTE: The State of Louisiana does hereby reserve, and this lease shall be subject to, the imprescriptible right of surface use in the nature of a servitude in favor of the Department of Natural Resources and/or the Louisiana Department of Wildlife and Fisheries, including its Offices and Commissions, for the sole purpose of implementing, constructing, servicing and maintaining approved coastal zone management and/or restoration projects. Utilization of any and all rights derived under this lease by the mineral lessee, its agents, successors or assigns, shall not interfere with nor hinder the reasonable surface use by the Department of Natural Resources and/or the Louisiana Department of Wildlife and Fisheries, its Offices or Commissions, as hereinabove reserved.

Applicant: OAPH Consultants



NORTH LAKE BORGNE AREA  
St. Bernard Parish, LA

**TRACT 34648 - St. Bernard Parish, Louisiana**

All of the lands now or formerly constituting the beds and bottoms of all water bodies of every nature and description and all islands and other lands formed by accretion or reliction, except tax lands, owned by and not under mineral lease from the State of Louisiana on July 10, 2002, situated in St. Bernard Parish, Louisiana, within the following described boundaries: Beginning at the Northeast corner of Block 21, North Lake Borgne Area, having Coordinates of X = 2,554,250.00 and Y = 529,958.70; thence South 9,000.00 feet to a point having Coordinates of X = 2,554,250.00 and Y = 520,958.70; thence West 9,000.00 feet to a point having Coordinates of X = 2,545,250.00 and Y = 520,958.70; thence North 9,000.00 feet to a point having Coordinates of X = 2,545,250.00 and Y = 529,958.70; thence East 9,000.00 feet to the point of beginning, containing approximately **1,859.50 acres**, as shown outlined on a plat on file in the Office of Mineral Resources, Department of Natural Resources, as provided by the applicant. All bearings, distances and coordinates are based on Louisiana Coordinate System of 1927 (South Zone).

NOTE: The above description of the tract nominated for lease has been provided exclusively by the party nominating the tract for lease.

Maps depicting the nominated tract, containing the bearings, distances and coordinates of the nominated tract based on the Louisiana Coordinate System of 1927, North or South Zone, as applicable, are available for public inspection and review at the offices of the Louisiana State Mineral Board from 10:00 a.m. to 3:00 p.m. Monday - Friday.

Any mineral lease selected from the nominated tract and awarded by the Louisiana State Mineral Board shall be without warranty of any kind, either express, implied, or statutory, including, but not limited to, the implied warranties or merchantability and fitness for a particular purpose. Should the mineral lease awarded by the Louisiana State Mineral Board be subsequently modified, cancelled or abrogated due to the existence of conflicting leases, operating agreements, private claims or other existing or future obligations or conditions which may affect all or any portion of the leased tract, it shall not relieve the Lessee of the obligation to pay any bonus due thereon to the Louisiana State Mineral Board, nor shall the Louisiana State Mineral Board be obligated to refund any consideration paid by the Lessee prior to such modification, cancellation, or abrogation, including, but not limited to, bonuses, rents and royalties.

NOTE: The Office of Mineral Resources will require a minimum bonus of \$230 per acre and a minimum royalty of 23%.

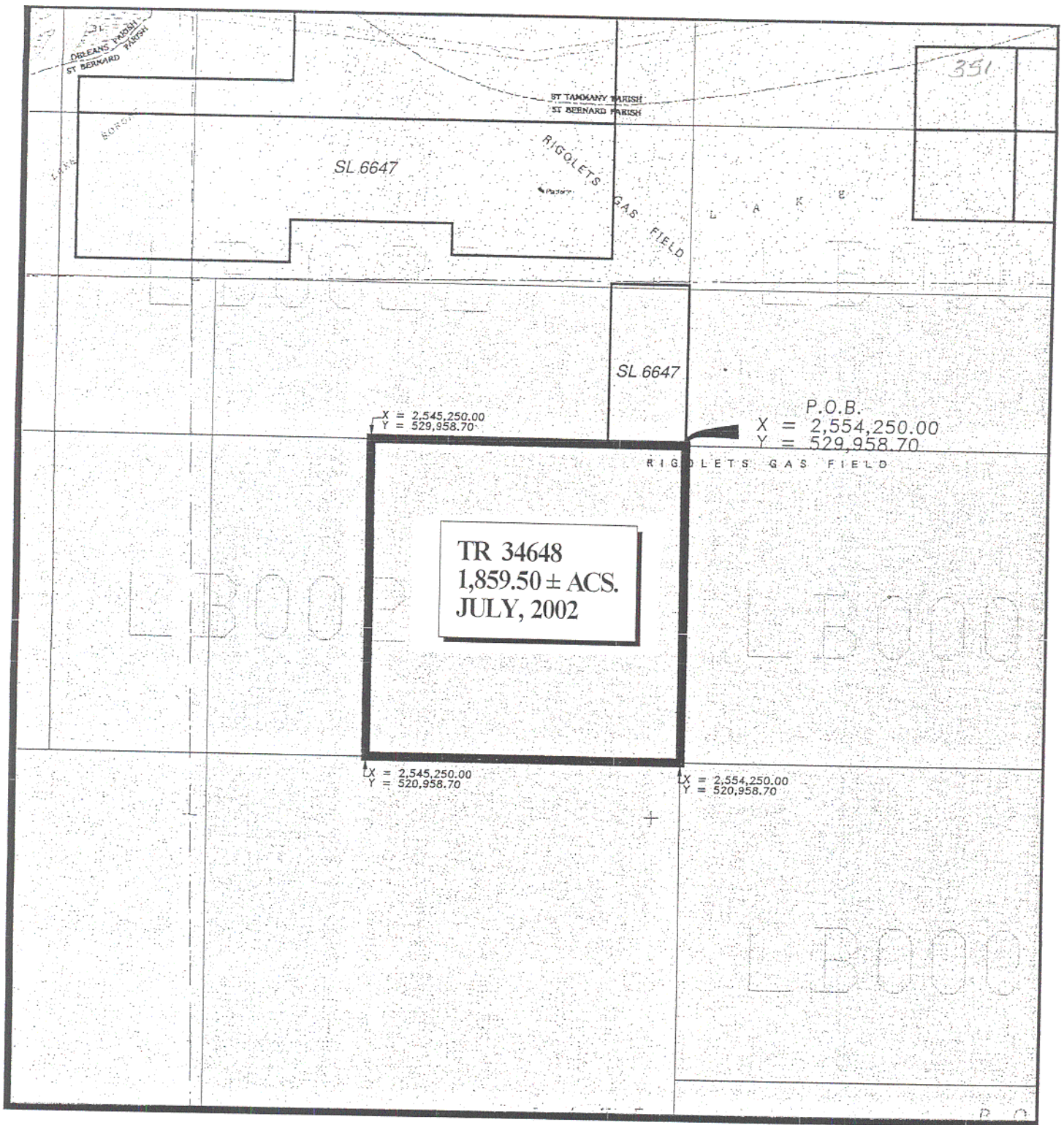
NOTE: The Department of Wildlife and Fisheries has designated certain areas in the coastal waters of the State of Louisiana as Oyster Seed Bed

Areas. The exact location of those Seed Bed Areas must be obtained from Wildlife and Fisheries and any work done under an oil, gas and other liquid or gaseous mineral lease from the State of Louisiana must be conducted in conformity with the rules and regulations promulgated by the said Department of Wildlife and Fisheries for Oyster Seed Bed Areas.

NOTE: The State of Louisiana does hereby reserve, and this lease shall be subject to, the imprescriptible right of surface use in the nature of a servitude in favor of the Department of Natural Resources and/or the Louisiana Department of Wildlife and Fisheries, including its Offices and Commissions, for the sole purpose of implementing, constructing, servicing and maintaining approved coastal zone management and/or restoration projects. Utilization of any and all rights derived under this lease by the mineral lessee, its agents, successors or assigns, shall not interfere with nor hinder the reasonable surface use by the Department of Natural Resources and/or the Louisiana Department of Wildlife and Fisheries, its Offices or Commissions, as hereinabove reserved.

Applicant: OAPH Consultants





TR 34648  
1,859.50 ± ACS.  
JULY, 2002

X = 2,545,250.00  
Y = 529,958.70

P.O.B.  
X = 2,554,250.00  
Y = 529,958.70

X = 2,545,250.00  
Y = 520,958.70

X = 2,554,250.00  
Y = 520,958.70



0' SCALE 4000'

NORTH LAKE BORGNE AREA  
St. Bernard Parish, LA



**TRACT 34649 - St. Bernard Parish, Louisiana**

All of the lands now or formerly constituting the beds and bottoms of all water bodies of every nature and description and all islands and other lands formed by accretion or reliction, except tax lands, owned by and not under mineral lease from the State of Louisiana on July 10, 2002, situated in St. Bernard Parish, Louisiana, within the following described boundaries: Beginning at a point having Coordinates of X = 2,524,733.90 and Y = 520,958.70; thence East 7,379.03 feet to a point having Coordinates of X = 2,532,112.93 and Y = 520,958.70; thence South 14,758.05 feet to a point having Coordinates of X = 2,532,112.93 and Y = 506,200.65; thence West 6,234.93 feet to a point being the Southeast corner of State Lease No. 17142 having Coordinates of X = 2,525,878.00 and Y = 506,200.65; thence along said State Lease No. 17142 the following courses: North 3,000.00 feet to a point having Coordinates of X = 2,525,878.00 and Y = 509,200.65 and West 1,144.10 feet to a point, being the Northwest corner of said State Lease No. 17142, having Coordinates of X = 2,524,733.90 and Y = 509,200.65; thence North 11,758.05 feet to the point of beginning, containing approximately **2,421.21 acres**, as shown outlined on a plat on file in the Office of Mineral Resources, Department of Natural Resources, as provided by the applicant. All bearings, distances and coordinates are based on Louisiana Coordinate System of 1927 (South Zone).

NOTE: The above description of the tract nominated for lease has been provided exclusively by the party nominating the tract for lease.

Maps depicting the nominated tract, containing the bearings, distances and coordinates of the nominated tract based on the Louisiana Coordinate System of 1927, North or South Zone, as applicable, are available for public inspection and review at the offices of the Louisiana State Mineral Board from 10:00 a.m. to 3:00 p.m. Monday - Friday.

Any mineral lease selected from the nominated tract and awarded by the Louisiana State Mineral Board shall be without warranty of any kind, either express, implied, or statutory, including, but not limited to, the implied warranties or merchantability and fitness for a particular purpose. Should the mineral lease awarded by the Louisiana State Mineral Board be subsequently modified, cancelled or abrogated due to the existence of conflicting leases, operating agreements, private claims or other existing or future obligations or conditions which may affect all or any portion of the leased tract, it shall not relieve the Lessee of the obligation to pay any bonus due thereon to the Louisiana State Mineral Board, nor shall the Louisiana State Mineral Board be obligated to refund any consideration paid by the Lessee prior to such modification, cancellation, or abrogation, including, but not limited to, bonuses, rents and royalties.

NOTE: The Office of Mineral Resources will require a minimum bonus of \$230 per acre and a minimum royalty of 23%.

NOTE: The Department of Wildlife and Fisheries has designated certain areas in the coastal waters of the State of Louisiana as Oyster Seed Bed Areas. The exact location of those Seed Bed Areas must be obtained from Wildlife and Fisheries and any work done under an oil, gas and other liquid or gaseous mineral lease from the State of Louisiana must be conducted in conformity with the rules and regulations promulgated by the said Department of Wildlife and Fisheries for Oyster Seed Bed Areas.

NOTE: The State of Louisiana does hereby reserve, and this lease shall be subject to, the imprescriptible right of surface use in the nature of a servitude in favor of the Department of Natural Resources and/or the Louisiana Department of Wildlife and Fisheries, including its Offices and Commissions, for the sole purpose of implementing, constructing, servicing and maintaining approved coastal zone management and/or restoration projects. Utilization of any and all rights derived under this lease by the mineral lessee, its agents, successors or assigns, shall not interfere with nor hinder the reasonable surface use by the Department of Natural Resources and/or the Louisiana Department of Wildlife and Fisheries, its Offices or Commissions, as hereinabove reserved.

Applicant: OAPH Consultants

354

P.O.B.

X = 2,524,733.90  
Y = 520,958.70

X = 2,532,112.93  
Y = 520,958.70

Shell Point

SHELL POINT GAS FIELD

TR 34649  
2,421.21 ± ACS.  
JULY, 2002

LAKE BORGNE

X = 2,524,733.90  
Y = 509,200.65

X = 2,525,878.00  
Y = 509,200.65

SL 17142

LAKE BORGNE  
GAS FIELD

SL 17141

X = 2,525,878.00  
Y = 506,200.65

X = 2,532,112.93  
Y = 506,200.65



0' 3000'  
SCALE

ST. BERNARD PARISH

**TRACT 34650 - St. Bernard Parish, Louisiana**

All of the lands now or formerly constituting the beds and bottoms of all water bodies of every nature and description and all islands and other lands formed by accretion or reliction, except tax lands, owned by and not under mineral lease from the State of Louisiana on July 10, 2002, situated in St. Bernard Parish, Louisiana, within the following described boundaries: Beginning at a point having Coordinates of X = 2,539,491.95 and Y = 520,958.70; thence South 14,758.05 feet to a point having Coordinates of X = 2,539,491.95 and Y = 506,200.65; thence West 7,379.02 feet to a point having Coordinates of X = 2,532,112.93 and Y = 506,200.65; thence North 14,758.05 feet to a point having Coordinates of X = 2,532,112.93 and Y = 520,958.70; thence East 7,379.02 feet to the point of beginning, containing approximately **2,500.00 acres**, as shown outlined on a plat on file in the Office of Mineral Resources, Department of Natural Resources, as provided by the applicant. All bearings, distances and coordinates are based on Louisiana Coordinate System of 1927 (South Zone).

NOTE: The above description of the tract nominated for lease has been provided exclusively by the party nominating the tract for lease.

Maps depicting the nominated tract, containing the bearings, distances and coordinates of the nominated tract based on the Louisiana Coordinate System of 1927, North or South Zone, as applicable, are available for public inspection and review at the offices of the Louisiana State Mineral Board from 10:00 a.m. to 3:00 p.m. Monday - Friday.

Any mineral lease selected from the nominated tract and awarded by the Louisiana State Mineral Board shall be without warranty of any kind, either express, implied, or statutory, including, but not limited to, the implied warranties or merchantability and fitness for a particular purpose. Should the mineral lease awarded by the Louisiana State Mineral Board be subsequently modified, cancelled or abrogated due to the existence of conflicting leases, operating agreements, private claims or other existing or future obligations or conditions which may affect all or any portion of the leased tract, it shall not relieve the Lessee of the obligation to pay any bonus due thereon to the Louisiana State Mineral Board, nor shall the Louisiana State Mineral Board be obligated to refund any consideration paid by the Lessee prior to such modification, cancellation, or abrogation, including, but not limited to, bonuses, rents and royalties.

NOTE: The Office of Mineral Resources will require a minimum bonus of \$230 per acre and a minimum royalty of 23%.

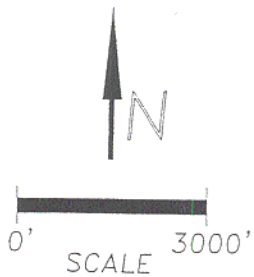
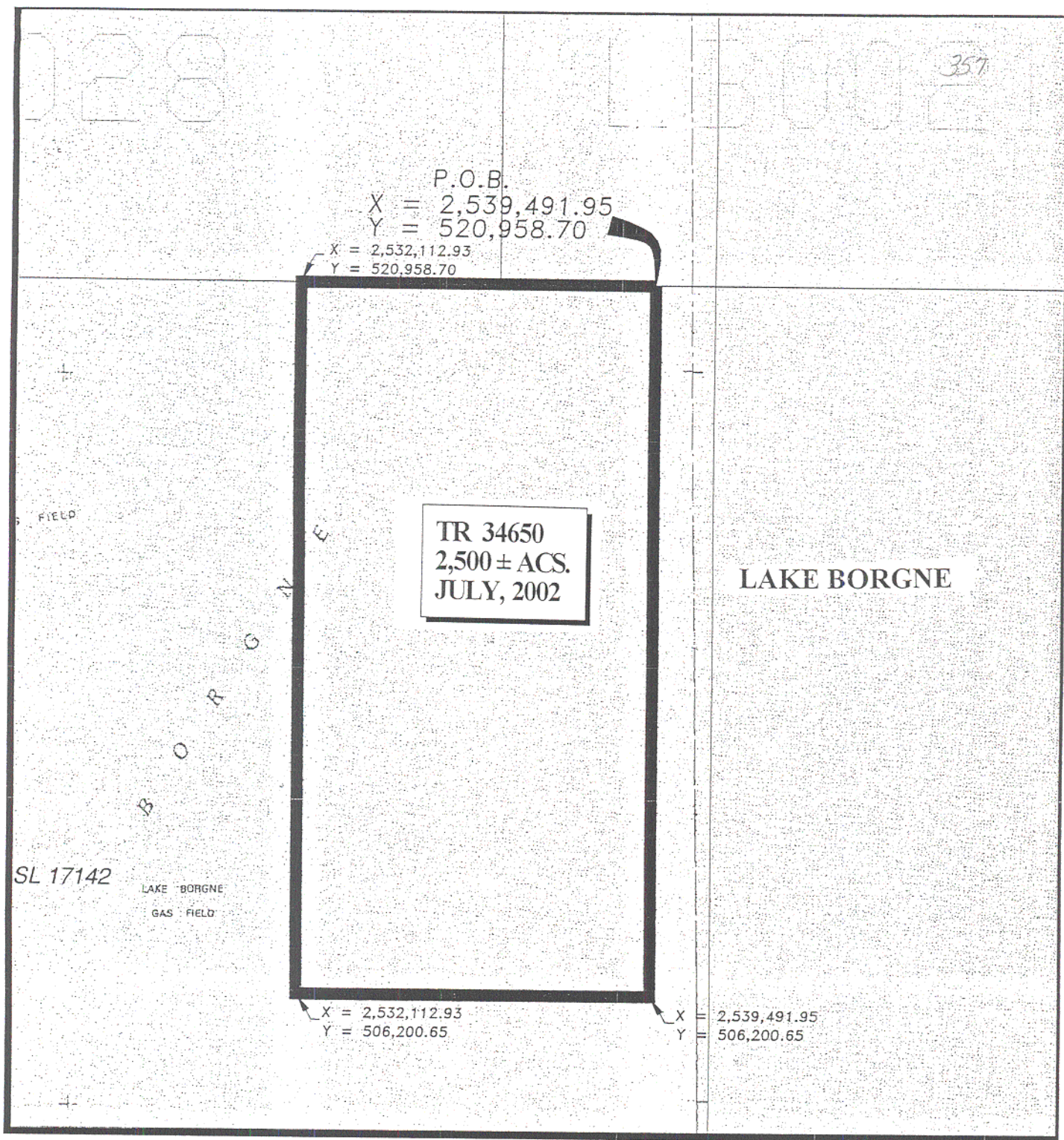
NOTE: The Department of Wildlife and Fisheries has designated certain areas in the coastal waters of the State of Louisiana as Oyster Seed Bed Areas. The exact location of those Seed Bed Areas must be obtained from

Wildlife and Fisheries and any work done under an oil, gas and other liquid or gaseous mineral lease from the State of Louisiana must be conducted in conformity with the rules and regulations promulgated by the said Department of Wildlife and Fisheries for Oyster Seed Bed Areas.

NOTE: The State of Louisiana does hereby reserve, and this lease shall be subject to, the imprescriptible right of surface use in the nature of a servitude in favor of the Department of Natural Resources and/or the Louisiana Department of Wildlife and Fisheries, including its Offices and Commissions, for the sole purpose of implementing, constructing, servicing and maintaining approved coastal zone management and/or restoration projects. Utilization of any and all rights derived under this lease by the mineral lessee, its agents, successors or assigns, shall not interfere with nor hinder the reasonable surface use by the Department of Natural Resources and/or the Louisiana Department of Wildlife and Fisheries, its Offices or Commissions, as hereinabove reserved.

Applicant: OAPH Consultants





ST. BERNARD PARISH

**TRACT 34651 - St. Bernard Parish, Louisiana**

All of the lands now or formerly constituting the beds and bottoms of all water bodies of every nature and description and all islands and other lands formed by accretion or reliction, except tax lands, owned by and not under mineral lease from the State of Louisiana on July 10, 2002, situated in St. Bernard Parish, Louisiana, within the following described boundaries: Beginning at a point having Coordinates of X = 2,539,491.95 and Y = 520,958.70; thence East 7,379.03 feet to a point having Coordinates of X = 2,546,870.98 and Y = 520,958.70; thence South 14,758.05 feet to a point having Coordinates of X = 2,546,870.98 and Y = 506,200.65; thence West 7,379.03 feet to a point having Coordinates of X = 2,539,491.95 and Y = 506,200.65; thence North 14,758.05 feet to the point of beginning, containing approximately **2,500.00 acres**, as shown outlined on a plat on file in the Office of Mineral Resources, Department of Natural Resources, as provided by the applicant. All bearings, distances and coordinates are based on Louisiana Coordinate System of 1927 (South Zone).

NOTE: The above description of the tract nominated for lease has been provided exclusively by the party nominating the tract for lease.

Maps depicting the nominated tract, containing the bearings, distances and coordinates of the nominated tract based on the Louisiana Coordinate System of 1927, North or South Zone, as applicable, are available for public inspection and review at the offices of the Louisiana State Mineral Board from 10:00 a.m. to 3:00 p.m. Monday - Friday.

Any mineral lease selected from the nominated tract and awarded by the Louisiana State Mineral Board shall be without warranty of any kind, either express, implied, or statutory, including, but not limited to, the implied warranties or merchantability and fitness for a particular purpose. Should the mineral lease awarded by the Louisiana State Mineral Board be subsequently modified, cancelled or abrogated due to the existence of conflicting leases, operating agreements, private claims or other existing or future obligations or conditions which may affect all or any portion of the leased tract, it shall not relieve the Lessee of the obligation to pay any bonus due thereon to the Louisiana State Mineral Board, nor shall the Louisiana State Mineral Board be obligated to refund any consideration paid by the Lessee prior to such modification, cancellation, or abrogation, including, but not limited to, bonuses, rents and royalties.

NOTE: The Office of Mineral Resources will require a minimum bonus of \$230 per acre and a minimum royalty of 23%.

NOTE: The Department of Wildlife and Fisheries has designated certain areas in the coastal waters of the State of Louisiana as Oyster Seed Bed



Areas. The exact location of those Seed Bed Areas must be obtained from Wildlife and Fisheries and any work done under an oil, gas and other liquid or gaseous mineral lease from the State of Louisiana must be conducted in conformity with the rules and regulations promulgated by the said Department of Wildlife and Fisheries for Oyster Seed Bed Areas.

NOTE: The State of Louisiana does hereby reserve, and this lease shall be subject to, the imprescriptible right of surface use in the nature of a servitude in favor of the Department of Natural Resources and/or the Louisiana Department of Wildlife and Fisheries, including its Offices and Commissions, for the sole purpose of implementing, constructing, servicing and maintaining approved coastal zone management and/or restoration projects. Utilization of any and all rights derived under this lease by the mineral lessee, its agents, successors or assigns, shall not interfere with nor hinder the reasonable surface use by the Department of Natural Resources and/or the Louisiana Department of Wildlife and Fisheries, its Offices or Commissions, as hereinabove reserved.

Applicant: OAPH Consultants

360

P.O.B.  
X = 2,539,491.95  
Y = 520,958.70

X = 2,546,870.98  
Y = 520,958.70

TR 34651  
2,500 ± ACS.  
JULY, 2002

LAKE BORGNE

L A K

X = 2,539,491.95  
Y = 506,200.65

X = 2,546,870.98  
Y = 506,200.65



0' SCALE 3000'

ST. BERNARD PARISH

**TRACT 34652 - St. Bernard Parish, Louisiana**

All of the lands now or formerly constituting the beds and bottoms of all water bodies of every nature and description and all islands and other lands formed by accretion or reliction, except tax lands, owned by and not under mineral lease from the State of Louisiana on July 10, 2002, situated in St. Bernard Parish, Louisiana, within the following described boundaries: Beginning at a point having Coordinates of X = 2,554,250.00 and Y = 520,958.70; thence South 14,758.05 feet to a point having Coordinates of X = 2,554,250.00 and Y = 506,200.65; thence West 7,379.02 feet to a point having Coordinates of X = 2,546,870.98 and Y = 506,200.65; thence North 14,758.05 feet to a point having Coordinates of X = 2,546,870.98 and Y = 520,958.70; thence East 7,379.02 feet to the point of beginning, containing approximately **2,500.00 acres**, as shown outlined on a plat on file in the Office of Mineral Resources, Department of Natural Resources, as provided by the applicant. All bearings, distances and coordinates are based on Louisiana Coordinate System of 1927 (South Zone).

NOTE: The above description of the tract nominated for lease has been provided exclusively by the party nominating the tract for lease.

Maps depicting the nominated tract, containing the bearings, distances and coordinates of the nominated tract based on the Louisiana Coordinate System of 1927, North or South Zone, as applicable, are available for public inspection and review at the offices of the Louisiana State Mineral Board from 10:00 a.m. to 3:00 p.m. Monday - Friday.

Any mineral lease selected from the nominated tract and awarded by the Louisiana State Mineral Board shall be without warranty of any kind, either express, implied, or statutory, including, but not limited to, the implied warranties or merchantability and fitness for a particular purpose. Should the mineral lease awarded by the Louisiana State Mineral Board be subsequently modified, cancelled or abrogated due to the existence of conflicting leases, operating agreements, private claims or other existing or future obligations or conditions which may affect all or any portion of the leased tract, it shall not relieve the Lessee of the obligation to pay any bonus due thereon to the Louisiana State Mineral Board, nor shall the Louisiana State Mineral Board be obligated to refund any consideration paid by the Lessee prior to such modification, cancellation, or abrogation, including, but not limited to, bonuses, rents and royalties.

NOTE: The Office of Mineral Resources will require a minimum bonus of \$230 per acre and a minimum royalty of 23%.

NOTE: The Department of Wildlife and Fisheries has designated certain areas in the coastal waters of the State of Louisiana as Oyster Seed Bed Areas. The exact location of those Seed Bed Areas must be obtained from

Wildlife and Fisheries and any work done under an oil, gas and other liquid or gaseous mineral lease from the State of Louisiana must be conducted in conformity with the rules and regulations promulgated by the said Department of Wildlife and Fisheries for Oyster Seed Bed Areas.

NOTE: The State of Louisiana does hereby reserve, and this lease shall be subject to, the imprescriptible right of surface use in the nature of a servitude in favor of the Department of Natural Resources and/or the Louisiana Department of Wildlife and Fisheries, including its Offices and Commissions, for the sole purpose of implementing, constructing, servicing and maintaining approved coastal zone management and/or restoration projects. Utilization of any and all rights derived under this lease by the mineral lessee, its agents, successors or assigns, shall not interfere with nor hinder the reasonable surface use by the Department of Natural Resources and/or the Louisiana Department of Wildlife and Fisheries, its Offices or Commissions, as hereinabove reserved.

Applicant: OAPH Consultants



363

P.O.B.  
X = 2,554,250.00  
Y = 520,958.70

X = 2,546,870.98  
Y = 520,958.70

TR 34652  
2,500 ± ACS.  
JULY, 2002

LAKE BORGNE

X = 2,546,870.98  
Y = 506,200.65

X = 2,554,250.00  
Y = 506,200.65



0' 3000'  
SCALE

ST. BERNARD PARISH

**TRACT 34653 - St. Bernard Parish, Louisiana**

All of the lands now or formerly constituting the beds and bottoms of all water bodies of every nature and description and all islands and other lands formed by accretion or reliction, except tax lands, owned by and not under mineral lease from the State of Louisiana on July 10, 2002, situated in St. Bernard Parish, Louisiana, within the following described boundaries: Beginning at a point having Coordinates of X = 2,539,491.95 and Y = 506,200.65; thence South 7,379.02 feet to a point having Coordinates of X = 2,539,491.95 and Y = 498,821.63; thence West 14,758.05 feet to a point having Coordinates of X = 2,524,733.90 and Y = 498,821.63; thence North 7,379.02 feet to a point having Coordinates of X = 2,524,733.90 and Y = 506,200.65; thence East 14,758.05 feet to the point of beginning, containing approximately **2,500.00 acres**, as shown outlined on a plat on file in the Office of Mineral Resources, Department of Natural Resources, as provided by the applicant. All bearings, distances and coordinates are based on Louisiana Coordinate System of 1927 (South Zone).

NOTE: The above description of the tract nominated for lease has been provided exclusively by the party nominating the tract for lease.

Maps depicting the nominated tract, containing the bearings, distances and coordinates of the nominated tract based on the Louisiana Coordinate System of 1927, North or South Zone, as applicable, are available for public inspection and review at the offices of the Louisiana State Mineral Board from 10:00 a.m. to 3:00 p.m. Monday - Friday.

Any mineral lease selected from the nominated tract and awarded by the Louisiana State Mineral Board shall be without warranty of any kind, either express, implied, or statutory, including, but not limited to, the implied warranties or merchantability and fitness for a particular purpose. Should the mineral lease awarded by the Louisiana State Mineral Board be subsequently modified, cancelled or abrogated due to the existence of conflicting leases, operating agreements, private claims or other existing or future obligations or conditions which may affect all or any portion of the leased tract, it shall not relieve the Lessee of the obligation to pay any bonus due thereon to the Louisiana State Mineral Board, nor shall the Louisiana State Mineral Board be obligated to refund any consideration paid by the Lessee prior to such modification, cancellation, or abrogation, including, but not limited to, bonuses, rents and royalties.

NOTE: The Office of Mineral Resources will require a minimum bonus of \$230 per acre and a minimum royalty of 23%.

NOTE: The Department of Wildlife and Fisheries has designated certain areas in the coastal waters of the State of Louisiana as Oyster Seed Bed

Areas. The exact location of those Seed Bed Areas must be obtained from Wildlife and Fisheries and any work done under an oil, gas and other liquid or gaseous mineral lease from the State of Louisiana must be conducted in conformity with the rules and regulations promulgated by the said Department of Wildlife and Fisheries for Oyster Seed Bed Areas.

NOTE: The State of Louisiana does hereby reserve, and this lease shall be subject to, the imprescriptible right of surface use in the nature of a servitude in favor of the Department of Natural Resources and/or the Louisiana Department of Wildlife and Fisheries, including its Offices and Commissions, for the sole purpose of implementing, constructing, servicing and maintaining approved coastal zone management and/or restoration projects. Utilization of any and all rights derived under this lease by the mineral lessee, its agents, successors or assigns, shall not interfere with nor hinder the reasonable surface use by the Department of Natural Resources and/or the Louisiana Department of Wildlife and Fisheries, its Offices or Commissions, as hereinabove reserved.

Applicant: OAPH Consultants



SHELL POINT

366

# LAKE BORGNE

LAKE BORGNE  
GAS FIELD

SL 17141

SL 17142

P.O.B.

X = 2,539,491.95  
Y = 506,200.65

X = 2,524,733.90  
Y = 506,200.65

TR 34653  
2,500 ± ACS.  
JULY, 2002

X = 2,524,733.90  
Y = 498,821.63

X = 2,539,491.95  
Y = 498,821.63



0' 3000'  
SCALE

ST. BERNARD PARISH

**TRACT 34654 - St. Bernard Parish, Louisiana**

All of the lands now or formerly constituting the beds and bottoms of all water bodies of every nature and description and all islands and other lands formed by accretion or reliction, except tax lands, owned by and not under mineral lease from the State of Louisiana on July 10, 2002, situated in St. Bernard Parish, Louisiana, within the following described boundaries: Beginning at a point having Coordinates of X = 2,539,491.95 and Y = 498,821.63; thence South 7,379.03 feet to a point having Coordinates of X = 2,539,491.95 and Y = 491,442.60; thence West 7,863.56 feet to a point being the Northeast corner of State Lease No. 17075 having Coordinates of X = 2,531,628.39 and Y = 491,442.60; thence West 2,207.67 feet along the North line of said State Lease No. 17075 to its Northwest corner having Coordinates of X = 2,529,420.72 and Y = 491,442.60; thence West 4,686.82 feet to a point having Coordinates of X = 2,524,733.90 and Y = 491,442.60; thence North 7,379.03 feet to a point having Coordinates of X = 2,524,733.90 and Y = 498,821.63; thence East 14,758.05 feet to the point of beginning, containing approximately **2,500.00 acres**, as shown outlined on a plat on file in the Office of Mineral Resources, Department of Natural Resources, as provided by the applicant. All bearings, distances and coordinates are based on Louisiana Coordinate System of 1927 (South Zone).

NOTE: The above description of the tract nominated for lease has been provided exclusively by the party nominating the tract for lease.

Maps depicting the nominated tract, containing the bearings, distances and coordinates of the nominated tract based on the Louisiana Coordinate System of 1927, North or South Zone, as applicable, are available for public inspection and review at the offices of the Louisiana State Mineral Board from 10:00 a.m. to 3:00 p.m. Monday - Friday.

Any mineral lease selected from the nominated tract and awarded by the Louisiana State Mineral Board shall be without warranty of any kind, either express, implied, or statutory, including, but not limited to, the implied warranties or merchantability and fitness for a particular purpose. Should the mineral lease awarded by the Louisiana State Mineral Board be subsequently modified, cancelled or abrogated due to the existence of conflicting leases, operating agreements, private claims or other existing or future obligations or conditions which may affect all or any portion of the leased tract, it shall not relieve the Lessee of the obligation to pay any bonus due thereon to the Louisiana State Mineral Board, nor shall the Louisiana State Mineral Board be obligated to refund any consideration paid by the Lessee prior to such modification, cancellation, or abrogation, including, but not limited to, bonuses, rents and royalties.

NOTE: The Office of Mineral Resources will require a minimum bonus of \$230 per acre and a minimum royalty of 23%.

NOTE: The Department of Wildlife and Fisheries has designated certain areas in the coastal waters of the State of Louisiana as Oyster Seed Bed Areas. The exact location of those Seed Bed Areas must be obtained from Wildlife and Fisheries and any work done under an oil, gas and other liquid or gaseous mineral lease from the State of Louisiana must be conducted in conformity with the rules and regulations promulgated by the said Department of Wildlife and Fisheries for Oyster Seed Bed Areas.

NOTE: The State of Louisiana does hereby reserve, and this lease shall be subject to, the imprescriptible right of surface use in the nature of a servitude in favor of the Department of Natural Resources and/or the Louisiana Department of Wildlife and Fisheries, including its Offices and Commissions, for the sole purpose of implementing, constructing, servicing and maintaining approved coastal zone management and/or restoration projects. Utilization of any and all rights derived under this lease by the mineral lessee, its agents, successors or assigns, shall not interfere with nor hinder the reasonable surface use by the Department of Natural Resources and/or the Louisiana Department of Wildlife and Fisheries, its Offices or Commissions, as hereinabove reserved.

Applicant: OAPH Consultants



SL 17141

GAS FIELD

369

# LAKE BORGNE

7074

P.O.B.  
X = 2,539,491.95  
Y = 498,821.63

X = 2,524,733.90  
Y = 498,821.63

TR 34654  
2,500 ± ACS.  
JULY, 2002

X = 2,524,733.90  
Y = 491,442.60  
X = 2,529,420.72  
Y = 491,442.60

X = 2,531,628.39  
Y = 491,442.60  
X = 2,539,491.95  
Y = 491,442.60

SL 17075

SL 170



0' 3000'  
SCALE

ST. BERNARD PARISH

**TRACT 34655 - St. Bernard Parish, Louisiana**

All of the lands now or formerly constituting the beds and bottoms of all water bodies of every nature and description and all islands and other lands formed by accretion or reliction, except tax lands, owned by and not under mineral lease from the State of Louisiana on July 10, 2002, situated in St. Bernard Parish, Louisiana, within the following described boundaries: Beginning at point having Coordinates of X = 2,524,733.90 and Y = 491,442.60; thence East 4,686.82 feet to a point being the Northwest corner of State Lease No. 17075 having Coordinates of X = 2,529,420.72 and Y = 491,442.60; thence along said State Lease No. 17075 the following courses: South 5,436.79 feet to a point having Coordinates of X = 2,529,420.72 and Y = 486,005.81; West 1,698.78 feet to a point having Coordinates of X = 2,527,721.94 and Y = 486,005.81; and South 1,942.23 feet to a point being the Southwest corner of said State Lease No. 17075 and the Northwest corner of State Lease No. 17077 having Coordinates of X = 2,527,721.94 and Y = 484,063.58; thence along said State Lease No. 17077 the following courses: South 1,455.23 feet to a point having Coordinates of X = 2,527,721.94 and Y = 482,608.25, East 3,397.56 feet to a point having Coordinates of X = 2,531,119.50 and Y = 482,608.23, and North 1,455.23 feet to a point being the Northeast corner of said State Lease No. 17077 and a point on the South line of State Lease No. 17075 having Coordinates of X = 2,531,119.50 and Y = 484,063.58; thence East 2,149.96 feet along the South line of said State Lease No. 17075 to a point being the Southeast corner and having Coordinates of X = 2,533,269.46 and Y = 484,063.58; thence South 7,379.02 feet to a point having Coordinates of X = 2,533,269.46 and Y = 476,684.56; thence West 3,849.39 feet to a point being the Southeast corner of State Lease No. 17076 having Coordinates of X = 2,529,420.07 and Y = 476,684.56; thence along said State Lease No. 17076 the following courses: North 2,624.62 feet to a point having Coordinates of X = 2,529,420.07 and Y = 479,309.18 and North 56 degrees 46 minutes 21 seconds West 5,602.10 feet to a point being the Northwest corner of said State Lease No. 17076 and having Coordinates of X = 2,524,733.90 and Y = 482,378.92; thence North 9,063.68 feet to the point of beginning, containing approximately **1,603.13 acres**, as shown outlined on a plat on file in the Office of Mineral Resources, Department of Natural Resources, as provided by the applicant. All bearings, distances and coordinates are based on Louisiana Coordinate System of 1927 (South Zone).

NOTE: The above description of the tract nominated for lease has been provided exclusively by the party nominating the tract for lease.

Maps depicting the nominated tract, containing the bearings, distances and coordinates of the nominated tract based on the Louisiana Coordinate System of 1927, North or South Zone, as applicable, are available for

public inspection and review at the offices of the Louisiana State Mineral Board from 10:00 a.m. to 3:00 p.m. Monday - Friday.

Any mineral lease selected from the nominated tract and awarded by the Louisiana State Mineral Board shall be without warranty of any kind, either express, implied, or statutory, including, but not limited to, the implied warranties or merchantability and fitness for a particular purpose. Should the mineral lease awarded by the Louisiana State Mineral Board be subsequently modified, cancelled or abrogated due to the existence of conflicting leases, operating agreements, private claims or other existing or future obligations or conditions which may affect all or any portion of the leased tract, it shall not relieve the Lessee of the obligation to pay any bonus due thereon to the Louisiana State Mineral Board, nor shall the Louisiana State Mineral Board be obligated to refund any consideration paid by the Lessee prior to such modification, cancellation, or abrogation, including, but not limited to, bonuses, rents and royalties.

NOTE: The Office of Mineral Resources will require a minimum bonus of \$230 per acre and a minimum royalty of 23%.

NOTE: The Department of Wildlife and Fisheries has designated certain areas in the coastal waters of the State of Louisiana as Oyster Seed Bed Areas. The exact location of those Seed Bed Areas must be obtained from Wildlife and Fisheries and any work done under an oil, gas and other liquid or gaseous mineral lease from the State of Louisiana must be conducted in conformity with the rules and regulations promulgated by the said Department of Wildlife and Fisheries for Oyster Seed Bed Areas.

NOTE: The State of Louisiana does hereby reserve, and this lease shall be subject to, the imprescriptible right of surface use in the nature of a servitude in favor of the Department of Natural Resources and/or the Louisiana Department of Wildlife and Fisheries, including its Offices and Commissions, for the sole purpose of implementing, constructing, servicing and maintaining approved coastal zone management and/or restoration projects. Utilization of any and all rights derived under this lease by the mineral lessee, its agents, successors or assigns, shall not interfere with nor hinder the reasonable surface use by the Department of Natural Resources and/or the Louisiana Department of Wildlife and Fisheries, its Offices or Commissions, as hereinabove reserved.

Applicant: OAPH Consultants

# LAKE BORGNE

P.O.B.  
X = 2,524,733.90  
Y = 491,442.60

X = 2,529,420.72  
Y = 491,442.60

TR 34655  
1,603.13 ± ACS.  
JULY, 2002

X = 2,529,420.72  
Y = 486,005.81

SL 17075

X = 2,527,721.94  
Y = 486,005.81

X = 2,527,721.94  
Y = 484,063.58

X = 2,531,119.50  
Y = 484,063.58

SL 17077

X = 2,533,269.46  
Y = 484,063.58

X = 2,524,733.90  
Y = 482,378.92

X = 2,527,721.94  
Y = 482,608.25

X = 2,531,119.50  
Y = 482,608.23

SL 17010

SL 17013

SL 17076

X = 2,529,420.07  
Y = 479,309.18

X = 2,529,420.07  
Y = 476,684.56

X = 2,533,269.46  
Y = 476,684.56

SL 17147



0' SCALE 3000'



**TRACT 34656 - St. Bernard Parish, Louisiana**

All of the lands now or formerly constituting the beds and bottoms of all water bodies of every nature and description and all islands and other lands formed by accretion or reliction, except tax lands, owned by and not under mineral lease from the State of Louisiana on July 10, 2002, situated in St. Bernard Parish, Louisiana, within the following described boundaries: Beginning at point having Coordinates of X = 2,539,491.95 and Y = 491,442.60; thence South 4,222.75 feet to a point being the Northwest corner of State Lease No. 17078 having Coordinates of X = 2,539,491.95 and Y = 487,219.85; thence South 3,156.27 feet along the West line of said State Lease No. 17078 to a point being the Southwest corner of State Lease No. 17078 and the Northwest corner of State Lease 17079 having Coordinates of X = 2,539,491.95 and Y = 484,063.58; thence along said State Lease No. 17079 the following courses: South 1,686.02 feet to a point having Coordinates of X = 2,539,491.95 and Y = 482,377.56; East 1,352.05 feet to a point having Coordinates of X = 2,540,844.00 and Y = 482,377.56, and South 5,693.00 feet to a point having Coordinates of X = 2,540,844.00 and Y = 476,684.56; thence West 7,574.54 feet to a point having Coordinates of X = 2,533,269.46 and Y = 476,684.56; thence North 7,379.02 feet to a point being the Southeast corner of State Lease No. 17075 having Coordinates of X = 2,533,269.46 and Y = 484,063.58; thence along said State Lease No. 17075 the following courses: North 17 degrees 11 minutes 25 seconds West 5,552.72 feet to a point having Coordinates of X = 2,531,628.39 and Y = 489,368.25 and North 2,074.35 feet to a point being the Northeast corner of State Lease No. 17075 having Coordinates of X = 2,531,628.39 and Y = 491,442.60; thence East 7,863.56 feet to the point of beginning, containing approximately **2,462.94 acres**, as shown outlined on a plat on file in the Office of Mineral Resources, Department of Natural Resources, as provided by the applicant. All bearings, distances and coordinates are based on Louisiana Coordinate System of 1927 (South Zone).

NOTE: The above description of the tract nominated for lease has been provided exclusively by the party nominating the tract for lease.

Maps depicting the nominated tract, containing the bearings, distances and coordinates of the nominated tract based on the Louisiana Coordinate System of 1927, North or South Zone, as applicable, are available for public inspection and review at the offices of the Louisiana State Mineral Board from 10:00 a.m. to 3:00 p.m. Monday - Friday.

Any mineral lease selected from the nominated tract and awarded by the Louisiana State Mineral Board shall be without warranty of any kind, either express, implied, or statutory, including, but not limited to, the implied warranties or merchantability and fitness for a particular purpose. Should the mineral lease awarded by the Louisiana State Mineral Board be subsequently modified, cancelled or abrogated due to the existence of conflicting leases, operating agreements, private claims or

other existing or future obligations or conditions which may affect all or any portion of the leased tract, it shall not relieve the Lessee of the obligation to pay any bonus due thereon to the Louisiana State Mineral Board, nor shall the Louisiana State Mineral Board be obligated to refund any consideration paid by the Lessee prior to such modification, cancellation, or abrogation, including, but not limited to, bonuses, rents and royalties.

NOTE: The Office of Mineral Resources will require a minimum bonus of \$230 per acre and a minimum royalty of 23%.

NOTE: The Department of Wildlife and Fisheries has designated certain areas in the coastal waters of the State of Louisiana as Oyster Seed Bed Areas. The exact location of those Seed Bed Areas must be obtained from Wildlife and Fisheries and any work done under an oil, gas and other liquid or gaseous mineral lease from the State of Louisiana must be conducted in conformity with the rules and regulations promulgated by the said Department of Wildlife and Fisheries for Oyster Seed Bed Areas.

NOTE: The State of Louisiana does hereby reserve, and this lease shall be subject to, the imprescriptible right of surface use in the nature of a servitude in favor of the Department of Natural Resources and/or the Louisiana Department of Wildlife and Fisheries, including its Offices and Commissions, for the sole purpose of implementing, constructing, servicing and maintaining approved coastal zone management and/or restoration projects. Utilization of any and all rights derived under this lease by the mineral lessee, its agents, successors or assigns, shall not interfere with nor hinder the reasonable surface use by the Department of Natural Resources and/or the Louisiana Department of Wildlife and Fisheries, its Offices or Commissions, as hereinabove reserved.

Applicant: OAPH Consultants

375

LAKE BORGNE

P.O.B.

X = 2,539,491.95  
Y = 491,442.60

X = 2,531,628.39  
Y = 491,442.60

X = 2,531,628.39  
Y = 489,368.25

TR 34656  
2,462.94 ± ACS.  
JULY, 2002

SL 17075

SL 17078

SL 17077

X = 2,539,491.95  
Y = 484,063.58  
X = 2,533,269.46  
Y = 484,063.58

X = 2,539,491.95  
Y = 482,377.56

X = 2,540,844.00  
Y = 482,377.56

SL 17079

17013 SL 17076

SL 17147

X = 2,533,269.46  
Y = 476,684.56

X = 2,540,844.00  
Y = 476,684.56

SL 17081



0' SCALE 3000'

ST. BERNARD PARISH