

TRACT 34583 - Cameron Parish, Louisiana

All of the lands now or formerly constituting the beds and bottoms of all water bodies of every nature and description and all islands and other lands formed by accretion or reliction, except tax lands, owned by and not under mineral lease from the State of Louisiana on July 10, 2002, situated in Cameron Parish, Louisiana, within the following described boundaries: Beginning at the Northeast corner of State Lease 16956, also being the Northwest corner of State Lease 16957 having Coordinates of X = 1,525,728.00 and Y = 437,864.00; thence West approximately 4,334 feet along the North boundary of said State Lease 16956 to its Northwest corner having a Coordinate of Y = 437,864.00; thence West approximately 1,166 feet to a point having Coordinates of X = 1,520,228.00 and Y = 437,864.00; thence North 4,500.00 feet to a point having Coordinates of X = 1,520,228.00 and Y = 442,364.00; thence North 45 degrees 06 minutes 16 seconds East 7,764.05 feet to a point having Coordinates of X = 1,525,728.00 and Y = 447,844.00; thence South 9,980.00 feet to the point of beginning, containing approximately **691 acres**, as shown outlined on a plat on file in the Office of Mineral Resources, Department of Natural Resources, as provided by the applicant. All bearings, distances and coordinates are based on Louisiana Coordinate System of 1927 (South Zone).

NOTE: The above description of the tract nominated for lease has been provided exclusively by the party nominating the tract for lease.

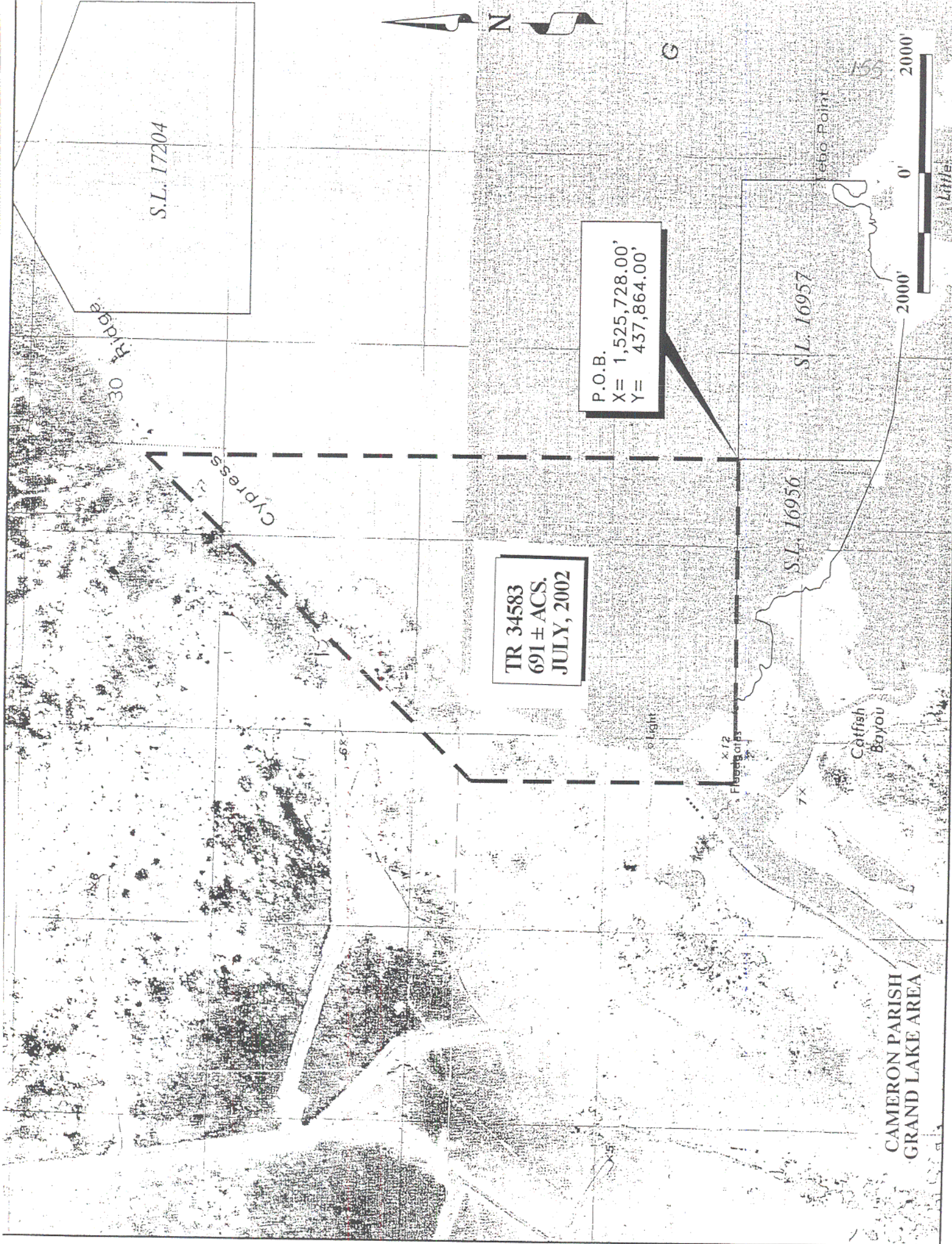
Maps depicting the nominated tract, containing the bearings, distances and coordinates of the nominated tract based on the Louisiana Coordinate System of 1927, North or South Zone, as applicable, are available for public inspection and review at the offices of the Louisiana State Mineral Board from 10:00 a.m. to 3:00 p.m. Monday - Friday.

Any mineral lease selected from the nominated tract and awarded by the Louisiana State Mineral Board shall be without warranty of any kind, either express, implied, or statutory, including, but not limited to, the implied warranties or merchantability and fitness for a particular purpose. Should the mineral lease awarded by the Louisiana State Mineral Board be subsequently modified, cancelled or abrogated due to the existence of conflicting leases, operating agreements, private claims or other existing or future obligations or conditions which may affect all or any portion of the leased tract, it shall not relieve the Lessee of the obligation to pay any bonus due thereon to the Louisiana State Mineral Board, nor shall the Louisiana State Mineral Board be obligated to refund any consideration paid by the Lessee prior to such modification, cancellation, or abrogation, including, but not limited to, bonuses, rents and royalties.

NOTE: The State of Louisiana does hereby reserve, and this lease shall be subject to, the imprescriptible right of surface use in the nature of a

servitude in favor of the Department of Natural Resources and/or the Louisiana Department of Wildlife and Fisheries, including its Offices and Commissions, for the sole purpose of implementing, constructing, servicing and maintaining approved coastal zone management and/or restoration projects. Utilization of any and all rights derived under this lease by the mineral lessee, its agents, successors or assigns, shall not interfere with nor hinder the reasonable surface use by the Department of Natural Resources and/or the Louisiana Department of Wildlife and Fisheries, its Offices or Commissions, as hereinabove reserved.

Applicant: Mohat Properties, L.L.C.



TRACT 34584 - Cameron Parish, Louisiana

All of the lands now or formerly constituting the beds and bottoms of all water bodies of every nature and description and all islands and other lands formed by accretion or reliction, except tax lands, owned by and not under mineral lease from the State of Louisiana on July 10, 2002, situated in Cameron Parish, Louisiana, within the following described boundaries: Beginning at a point having coordinates of X = 1,545,837.00 and Y = 448,549.00; thence West 12,487.00 feet to a point on the East boundary of State Lease 17204 having Coordinates of X = 1,533,350.00 and Y = 448,549.00; thence North 501.00 feet along the said East boundary of State Lease 17204 to its Northeast corner having Coordinates of X = 1,533,350.00 and Y = 449,050.00; thence North 69 degrees 13 minutes 42 seconds West 3,426.09 feet along the North boundary of said State Lease 17204 to its most Northerly Northwest corner having Coordinates of X = 1,530,146.60 and Y = 450,265.05; thence North 60 degrees 00 minutes 13 seconds East 11,443.13 feet to a point having Coordinates of X = 1,540,057.00 and Y = 455,986.00; thence East 5,780.00 feet to a point having Coordinates of X = 1,545,837.00 and Y = 455,986.00; thence South 7,437.00 feet to the point of beginning, containing approximately **1,746 acres**, as shown outlined on a plat on file in the Office of Mineral Resources, Department of Natural Resources, as provided by the applicant. All bearings, distances and coordinates are based on Louisiana Coordinate System of 1927 (South Zone).

NOTE: The above description of the tract nominated for lease has been provided exclusively by the party nominating the tract for lease.

Maps depicting the nominated tract, containing the bearings, distances and coordinates of the nominated tract based on the Louisiana Coordinate System of 1927, North or South Zone, as applicable, are available for public inspection and review at the offices of the Louisiana State Mineral Board from 10:00 a.m. to 3:00 p.m. Monday - Friday.

Any mineral lease selected from the nominated tract and awarded by the Louisiana State Mineral Board shall be without warranty of any kind, either express, implied, or statutory, including, but not limited to, the implied warranties or merchantability and fitness for a particular purpose. Should the mineral lease awarded by the Louisiana State Mineral Board be subsequently modified, cancelled or abrogated due to the existence of conflicting leases, operating agreements, private claims or other existing or future obligations or conditions which may affect all or any portion of the leased tract, it shall not relieve the Lessee of the obligation to pay any bonus due thereon to the Louisiana State Mineral Board, nor shall the Louisiana State Mineral Board be obligated to refund any consideration paid by the Lessee prior to such modification, cancellation, or abrogation, including, but not limited to, bonuses, rents and royalties.

NOTE: The State of Louisiana does hereby reserve, and this lease shall be subject to, the imprescriptible right of surface use in the nature of a servitude in favor of the Department of Natural Resources and/or the Louisiana Department of Wildlife and Fisheries, including its Offices and Commissions, for the sole purpose of implementing, constructing, servicing and maintaining approved coastal zone management and/or restoration projects. Utilization of any and all rights derived under this lease by the mineral lessee, its agents, successors or assigns, shall not interfere with nor hinder the reasonable surface use by the Department of Natural Resources and/or the Louisiana Department of Wildlife and Fisheries, its Offices or Commissions, as hereinabove reserved.

Applicant: Mohat Properties, L.L.C.



15 Hackberry Point

TR 34584
1,746 ± ACS.
JULY, 2002

P.O.B.
X= 1,545,837.00'
Y= 448,549.00'

158

2000' 0' 2000'

S.L. 17205

S.L. 17204

CAMERON PARISH
GRAND LAKE AREA

18

19

20

21

17

16

TRACT 34585 - Cameron Parish, Louisiana

All of the lands now or formerly constituting the beds and bottoms of all water bodies of every nature and description and all islands and other lands formed by accretion or reliction, except tax lands, owned by and not under mineral lease from the State of Louisiana on July 10, 2002, situated in Cameron Parish, Louisiana, within the following described boundaries: Beginning at the Northeast corner of State Lease 16956, also being the Northwest corner of State Lease No. 16957 having Coordinates of X = 1,525,728.00 and Y = 437,864.00; thence North 9,980.00 feet to a point having Coordinates of X = 1,525,728.00 and Y = 447,844.00; thence North 62 degrees 24 minutes 25 seconds East 2,680.93 feet to a the most Westerly Northwest corner of State Lease No. 17204 having Coordinates of X = 1,528,104.00 and Y = 449,085.78; thence South 2,960.78 feet along the West boundary of said State Lease No. 17204 to its Southwest corner having Coordinates of X = 1,528,104.00 and Y = 446,125.00; thence East 5,246.00 feet along the South boundary of said State Lease No. 17204 to its Southeast corner having Coordinates of X = 1,533,350.00 and Y = 446,125.00; thence North 2,424.00 feet along the East boundary of said State Lease No. 17204 to a point having Coordinates of X = 1,533,350.00 and Y = 448,549.00; thence East 1,673.00 feet to a point having Coordinates of X = 1,535,023.00 and Y = 448,549.00; thence South 10,685.00 feet to a point having Coordinates of X = 1,535,023.00 and Y = 437,864.00; thence West 4,595.00 feet to the Northeast corner of said State Lease No. 16957 having Coordinates of X = 1,530,428.00 and Y = 437,864.00; thence West 4,700.00 feet along the North boundary of said State Lease No. 16957 to the point of beginning, containing approximately **1,938 acres**, as shown outlined on a plat on file in the Office of Mineral Resources, Department of Natural Resources, as provided by the applicant. All bearings, distances and coordinates are based on Louisiana Coordinate System of 1927 (South Zone).

NOTE: The above description of the tract nominated for lease has been provided exclusively by the party nominating the tract for lease.

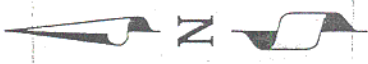
Maps depicting the nominated tract, containing the bearings, distances and coordinates of the nominated tract based on the Louisiana Coordinate System of 1927, North or South Zone, as applicable, are available for public inspection and review at the offices of the Louisiana State Mineral Board from 10:00 a.m. to 3:00 p.m. Monday - Friday.

Any mineral lease selected from the nominated tract and awarded by the Louisiana State Mineral Board shall be without warranty of any kind, either express, implied, or statutory, including, but not limited to, the implied warranties or merchantability and fitness for a particular purpose. Should the mineral lease awarded by the Louisiana State Mineral Board be subsequently modified, cancelled or abrogated due to the existence of conflicting leases, operating agreements, private claims or

other existing or future obligations or conditions which may affect all or any portion of the leased tract, it shall not relieve the Lessee of the obligation to pay any bonus due thereon to the Louisiana State Mineral Board, nor shall the Louisiana State Mineral Board be obligated to refund any consideration paid by the Lessee prior to such modification, cancellation, or abrogation, including, but not limited to, bonuses, rents and royalties.

NOTE: The State of Louisiana does hereby reserve, and this lease shall be subject to, the imprescriptible right of surface use in the nature of a servitude in favor of the Department of Natural Resources and/or the Louisiana Department of Wildlife and Fisheries, including its Offices and Commissions, for the sole purpose of implementing, constructing, servicing and maintaining approved coastal zone management and/or restoration projects. Utilization of any and all rights derived under this lease by the mineral lessee, its agents, successors or assigns, shall not interfere with nor hinder the reasonable surface use by the Department of Natural Resources and/or the Louisiana Department of Wildlife and Fisheries, its Offices or Commissions, as hereinabove reserved.

Applicant: Mohat Properties, L.L.C.



S.L. 17205

S.L. 17253

161

2000' 0' 2000'



S.L. 17204

TR 34585
1,938 ± ACS.
JULY, 2002

G R A N D

S.L. 16957

S.L. 16956

CAMERON PARISH
GRAND LAKE AREA

Cottish

P.O.B.
X= 1,525,728.00'
Y= 437,864.00'

Old Bridge

Cypress

x12
Floodgates

7x

TRACT 34586 - Cameron Parish, Louisiana

All of the lands now or formerly constituting the beds and bottoms of all water bodies of every nature and description and all islands and other lands formed by accretion or reliction, except tax lands, owned by and not under mineral lease from the State of Louisiana on July 10, 2002, situated in Cameron Parish, Louisiana, within the following described boundaries: Beginning at a point having Coordinates of X = 1,535,023.00 and Y = 437,864.00; thence North 10,685.00 feet to a point having Coordinates of X = 1,535,023.00 and Y = 448,549.00; thence East 5,377.00 feet to a point having Coordinates of X = 1,540,400.00 and Y = 448,549.00; thence South 3,290.97 feet to a point on the North boundary of State Lease No. 17205 having Coordinates of X = 1,540,400.00 and Y = 445,258.03; thence North 81 degrees 25 minutes 22 seconds West 4,163.57 feet along the said North boundary of State Lease No. 17205 to its Northwest corner having Coordinates of X = 1,536,283.00 and Y = 445,879.00; thence South 01 degrees 34 minutes 51 seconds West 1,087.41 feet along the West boundary of said State Lease No. 17205 to its Southwest corner, also being the Northwest corner of State Lease No. 17253 having Coordinates of X = 1,536,253.00 and Y = 444,792.00; thence South 01 degrees 11 minutes 16 seconds East 2,122.46 feet along the West boundary of said State Lease No. 17253 to its Southwest corner having Coordinates of X = 1,536,297.00 and Y = 442,670.00; thence South 60 degrees 33 minutes 43 seconds East 3,563.03 feet along the South boundary of said State Lease No. 17253 to its Southeast corner, also being the Southwest corner of State Lease No. 17254 having Coordinates of X = 1,539,400.00 and Y = 440,918.84; thence South 60 degrees 33 minutes 43 seconds East 1,148.25 feet along the South boundary of said State Lease No. 17254 to a point having Coordinates of X = 1,540,400.00 and Y = 440,354.49; thence South 2,490.49 feet to a point having Coordinates of X = 1,540,400.00 and Y = 437,864.00; thence West 5,377.00 feet to the point of beginning, containing approximately **935.18 acres**, as shown outlined on a plat on file in the Office of Mineral Resources, Department of Natural Resources, as provided by the applicant. All bearings, distances and coordinates are based on Louisiana Coordinate System of 1927 (South Zone).

NOTE: The above description of the tract nominated for lease has been provided exclusively by the party nominating the tract for lease.

Maps depicting the nominated tract, containing the bearings, distances and coordinates of the nominated tract based on the Louisiana Coordinate System of 1927, North or South Zone, as applicable, are available for public inspection and review at the offices of the Louisiana State Mineral Board from 10:00 a.m. to 3:00 p.m. Monday - Friday.

Any mineral lease selected from the nominated tract and awarded by the Louisiana State Mineral Board shall be without warranty of any kind, either express, implied, or statutory, including, but not limited to, the

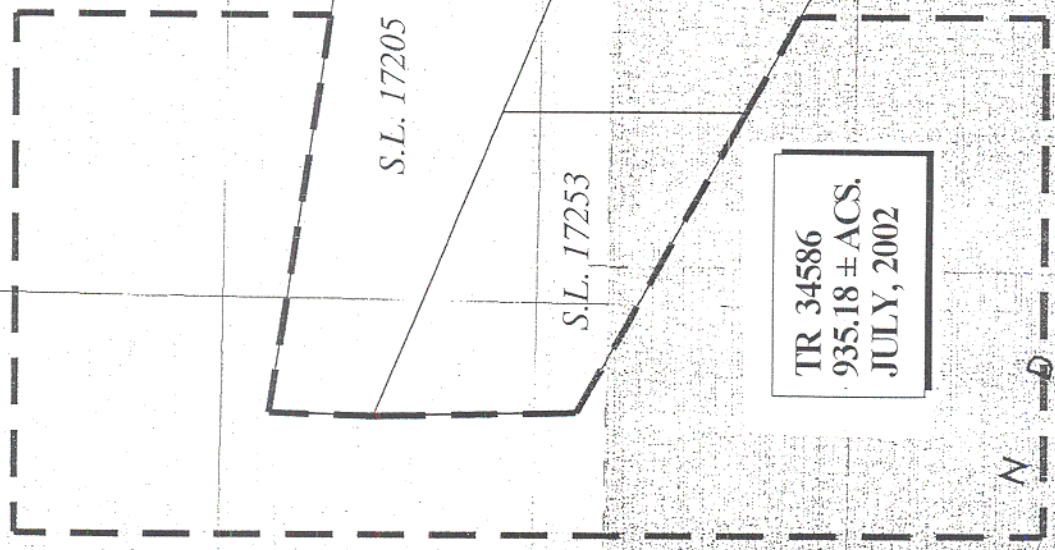
implied warranties or merchantability and fitness for a particular purpose. Should the mineral lease awarded by the Louisiana State Mineral Board be subsequently modified, cancelled or abrogated due to the existence of conflicting leases, operating agreements, private claims or other existing or future obligations or conditions which may affect all or any portion of the leased tract, it shall not relieve the Lessee of the obligation to pay any bonus due thereon to the Louisiana State Mineral Board, nor shall the Louisiana State Mineral Board be obligated to refund any consideration paid by the Lessee prior to such modification, cancellation, or abrogation, including, but not limited to, bonuses, rents and royalties.

NOTE: The State of Louisiana does hereby reserve, and this lease shall be subject to, the imprescriptible right of surface use in the nature of a servitude in favor of the Department of Natural Resources and/or the Louisiana Department of Wildlife and Fisheries, including its Offices and Commissions, for the sole purpose of implementing, constructing, servicing and maintaining approved coastal zone management and/or restoration projects. Utilization of any and all rights derived under this lease by the mineral lessee, its agents, successors or assigns, shall not interfere with nor hinder the reasonable surface use by the Department of Natural Resources and/or the Louisiana Department of Wildlife and Fisheries, its Offices or Commissions, as hereinabove reserved.

Applicant: Mohat Properties, L.L.C.

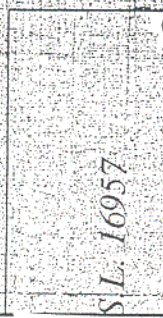
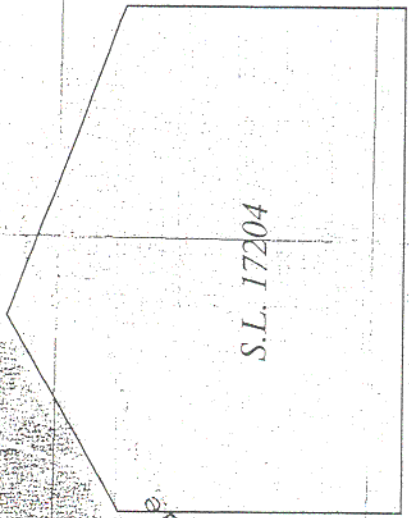


164



TR 34586
935.18 ± ACS.
JULY, 2002

P.O.B.
X= 1,535,023.00'
Y= 437,864.00'



L A K E

CAMERON PARISH
GRAND LAKE AREA

TRACT 34587 - Cameron Parish, Louisiana

All of the lands now or formerly constituting the beds and bottoms of all water bodies of every nature and description and all islands and other lands formed by accretion or reliction, except tax lands, owned by and not under mineral lease from the State of Louisiana on July 10, 2002, situated in Cameron Parish, Louisiana, within the following described boundaries: Beginning at a point having Coordinates of X = 1,545,837.00 and Y = 448,549.00; thence South 5,436.00 feet to a point having Coordinates of X = 1,545,837.00 and Y = 443,113.00; thence East 3,063.00 feet to a point having Coordinates of X = 1,548,900.00 and Y = 443,113.00; thence South 5,249.00 feet to a point having Coordinates of X = 1,548,900.00 and Y = 437,864.00; thence West 8,500.00 feet to a point having Coordinates of X = 1,540,400.00 and Y = 437,864.00; thence North 2,490.49 feet to a point on the South boundary of State Lease No. 17254 having Coordinates of X = 1,540,400.00 and Y = 440,354.49; thence along the Southern and Eastern boundaries of said State Lease No. 17254 the following courses: South 60 degrees 33 minutes 43 seconds East 2,096.71 feet to a point having Coordinates of X = 1,542,226.00 and Y = 439,324.00; South 66 degrees 16 minutes 14 seconds East 2,820.45 feet to a point having Coordinates of X = 1,544,808.00 and Y = 438,189.00; South 88 degrees 48 minutes 17 seconds East 2,876.63 feet to a point having Coordinates of X = 1,547,684.00 and Y = 438,129.00; North 12 degrees 33 minutes 00 seconds West 2,337.86 feet to its most Northerly Northeast corner, also being the most Southern Northeast corner of State Lease No. 17205 having Coordinates of X = 1,547,176.00 and Y = 440,411.00; thence along the Northern boundaries of said State Lease No. 17205 the following courses: North 49 degrees 07 minutes 34 seconds West 4,284.86 feet to a point having Coordinates of X = 1,543,936.00 and Y = 443,215.00; North 56 degrees 53 minutes 36 seconds West 3,595.75 feet to a point having Coordinates of X = 1,540,924.00 and Y = 445,179.00; North 81 degrees 25 minutes 22 seconds West 529.93 feet to a point having Coordinates of X = 1,540,400.00 and Y = 445,258.03; thence North 3,290.97 feet to a point having Coordinates of X = 1,540,400.00 and Y = 448,549.00; thence East 5,437.00 feet to the point of beginning, containing approximately **1,021.44 acres**, as shown outlined on a plat on file in the Office of Mineral Resources, Department of Natural Resources, as provided by the applicant. All bearings, distances and coordinates are based on Louisiana Coordinate System of 1927 (South Zone).

NOTE: The above description of the tract nominated for lease has been provided exclusively by the party nominating the tract for lease.

Maps depicting the nominated tract, containing the bearings, distances and coordinates of the nominated tract based on the Louisiana Coordinate System of 1927, North or South Zone, as applicable, are available for public inspection and review at the offices of the Louisiana State Mineral Board from 10:00 a.m. to 3:00 p.m. Monday - Friday.

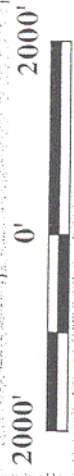
Any mineral lease selected from the nominated tract and awarded by the Louisiana State Mineral Board shall be without warranty of any kind, either express, implied, or statutory, including, but not limited to, the implied warranties or merchantability and fitness for a particular purpose. Should the mineral lease awarded by the Louisiana State Mineral Board be subsequently modified, cancelled or abrogated due to the existence of conflicting leases, operating agreements, private claims or other existing or future obligations or conditions which may affect all or any portion of the leased tract, it shall not relieve the Lessee of the obligation to pay any bonus due thereon to the Louisiana State Mineral Board, nor shall the Louisiana State Mineral Board be obligated to refund any consideration paid by the Lessee prior to such modification, cancellation, or abrogation, including, but not limited to, bonuses, rents and royalties.

NOTE: The State of Louisiana does hereby reserve, and this lease shall be subject to, the imprescriptible right of surface use in the nature of a servitude in favor of the Department of Natural Resources and/or the Louisiana Department of Wildlife and Fisheries, including its Offices and Commissions, for the sole purpose of implementing, constructing, servicing and maintaining approved coastal zone management and/or restoration projects. Utilization of any and all rights derived under this lease by the mineral lessee, its agents, successors or assigns, shall not interfere with nor hinder the reasonable surface use by the Department of Natural Resources and/or the Louisiana Department of Wildlife and Fisheries, its Offices or Commissions, as hereinabove reserved.

Applicant: Mohat Properties, L.L.C.

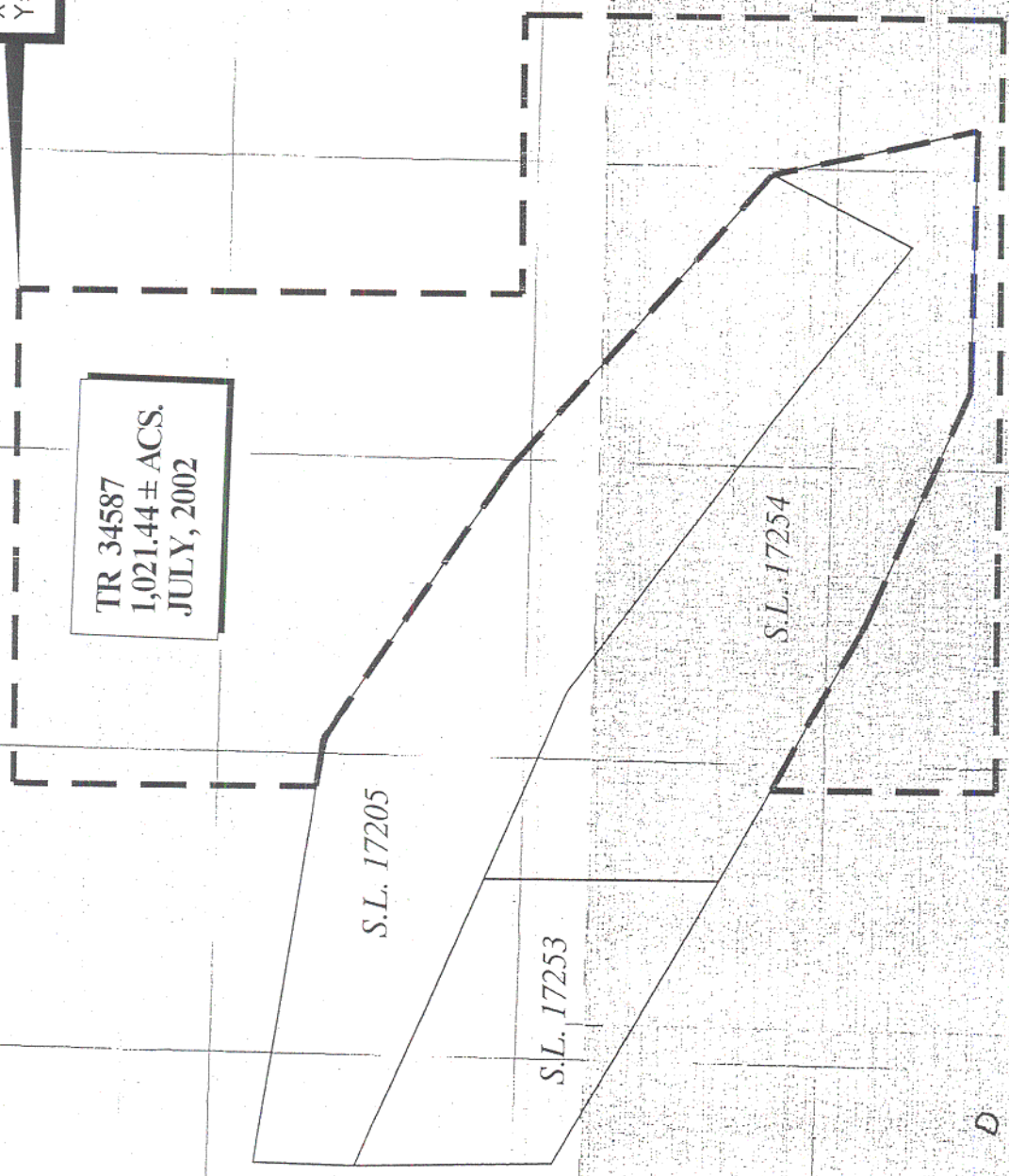


167



P.O.B.
X= 1,545,837.00'
Y= 448,549.00'

TR 34587
1,021.44 ± ACS.
JULY, 2002



CAMERON PARISH
GRAND LAKE AREA

R A N D L A K E

TRACT 34588 - Cameron Parish, Louisiana

All of the lands now or formerly constituting the beds and bottoms of all water bodies of every nature and description and all islands and other lands formed by accretion or reliction, except tax lands, owned by and not under mineral lease from the State of Louisiana on July 10, 2002, situated in Cameron Parish, Louisiana, within the following described boundaries: Beginning at a point having Coordinates of X = 1,535,023.00 and Y = 437,864.00; thence East 11,544.00 feet to a point having Coordinates of X = 1,546,567.00 and Y = 437,864.00; thence South 9,400.00 feet to a point having Coordinates of X = 1,546,567.00 and Y = 428,464.00; thence North 74 degrees 16 minutes 35 seconds West 11,992.77 feet to a point having Coordinates of X = 1,535,023.00 and Y = 431,714.00; thence North 6,150.00 feet to the point of beginning, containing approximately **1,867 acres**, as shown outlined on a plat on file in the Office of Mineral Resources, Department of Natural Resources, as provided by the applicant. All bearings, distances and coordinates are based on Louisiana Coordinate System of 1927 (South Zone).

NOTE: The above description of the tract nominated for lease has been provided exclusively by the party nominating the tract for lease.

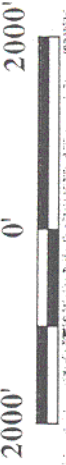
Maps depicting the nominated tract, containing the bearings, distances and coordinates of the nominated tract based on the Louisiana Coordinate System of 1927, North or South Zone, as applicable, are available for public inspection and review at the offices of the Louisiana State Mineral Board from 10:00 a.m. to 3:00 p.m. Monday - Friday.

Any mineral lease selected from the nominated tract and awarded by the Louisiana State Mineral Board shall be without warranty of any kind, either express, implied, or statutory, including, but not limited to, the implied warranties or merchantability and fitness for a particular purpose. Should the mineral lease awarded by the Louisiana State Mineral Board be subsequently modified, cancelled or abrogated due to the existence of conflicting leases, operating agreements, private claims or other existing or future obligations or conditions which may affect all or any portion of the leased tract, it shall not relieve the Lessee of the obligation to pay any bonus due thereon to the Louisiana State Mineral Board, nor shall the Louisiana State Mineral Board be obligated to refund any consideration paid by the Lessee prior to such modification, cancellation, or abrogation, including, but not limited to, bonuses, rents and royalties.

NOTE: The State of Louisiana does hereby reserve, and this lease shall be subject to, the imprescriptible right of surface use in the nature of a servitude in favor of the Department of Natural Resources and/or the Louisiana Department of Wildlife and Fisheries, including its Offices and Commissions, for the sole purpose of implementing, constructing, servicing

and maintaining approved coastal zone management and/or restoration projects. Utilization of any and all rights derived under this lease by the mineral lessee, its agents, successors or assigns, shall not interfere with nor hinder the reasonable surface use by the Department of Natural Resources and/or the Louisiana Department of Wildlife and Fisheries, its Offices or Commissions, as hereinabove reserved.

Applicant: Mohat Properties, L.L.C.



P.O.B.
X= 1,535,023.00'
Y= 437,864.00'

S.L. 17205

S.L. 17254

GRAND

N

L

A K E

TR 34588
1,867 ± ACS.
JULY, 2002

Tebo Point

Little
fish Lake

Betty
Lake

CAMERON PARISH
GRAND LAKE AREA

TRACT 34589 - Cameron Parish, Louisiana

All of the lands now or formerly constituting the beds and bottoms of all water bodies of every nature and description and all islands and other lands formed by accretion or reliction, except tax lands, owned by and not under mineral lease from the State of Louisiana on July 10, 2002, situated in Cameron Parish, Louisiana, within the following described boundaries: Beginning at a point having Coordinates of X = 1,551,897.00 and Y = 437,864.00; thence South 10,600.00 feet to a point having Coordinates of X = 1,551,897.00 and Y = 427,264.00; thence North 77 degrees 18 minutes 43 seconds West 5,463.41 feet to a point having Coordinates of X = 1,546,567.00 and Y = 428,464.00; thence North 9,400.00 feet to a point having Coordinates of X = 1,546,567.00 and Y = 437,864.00; thence East 5,330.00 feet to the point of beginning, containing approximately **1,079 acres**, as shown outlined on a plat on file in the Office of Mineral Resources, Department of Natural Resources, as provided by the applicant. All bearings, distances and coordinates are based on Louisiana Coordinate System of 1927 (South Zone).

NOTE: The above description of the tract nominated for lease has been provided exclusively by the party nominating the tract for lease.

Maps depicting the nominated tract, containing the bearings, distances and coordinates of the nominated tract based on the Louisiana Coordinate System of 1927, North or South Zone, as applicable, are available for public inspection and review at the offices of the Louisiana State Mineral Board from 10:00 a.m. to 3:00 p.m. Monday - Friday.

Any mineral lease selected from the nominated tract and awarded by the Louisiana State Mineral Board shall be without warranty of any kind, either express, implied, or statutory, including, but not limited to, the implied warranties or merchantability and fitness for a particular purpose. Should the mineral lease awarded by the Louisiana State Mineral Board be subsequently modified, cancelled or abrogated due to the existence of conflicting leases, operating agreements, private claims or other existing or future obligations or conditions which may affect all or any portion of the leased tract, it shall not relieve the Lessee of the obligation to pay any bonus due thereon to the Louisiana State Mineral Board, nor shall the Louisiana State Mineral Board be obligated to refund any consideration paid by the Lessee prior to such modification, cancellation, or abrogation, including, but not limited to, bonuses, rents and royalties.

NOTE: The State of Louisiana does hereby reserve, and this lease shall be subject to, the imprescriptible right of surface use in the nature of a servitude in favor of the Department of Natural Resources and/or the Louisiana Department of Wildlife and Fisheries, including its Offices and Commissions, for the sole purpose of implementing, constructing, servicing

and maintaining approved coastal zone management and/or restoration projects. Utilization of any and all rights derived under this lease by the mineral lessee, its agents, successors or assigns, shall not interfere with nor hinder the reasonable surface use by the Department of Natural Resources and/or the Louisiana Department of Wildlife and Fisheries, its Offices or Commissions, as hereinabove reserved.

Applicant: Mohat Properties, L.L.C.

G

R

P.O.B.

X= 1,551,897.00'
Y= 437,864.00'

TR 34589
1,079 ± ACS.
JULY, 2002

S.L. 17205

S.L. 17254

L A K E

Betty
Lake

CAMERON PARISH
GRAND LAKE AREA

173

2000'

0'

2000'

lake

TRACT 34590 - Cameron Parish, Louisiana

All of the lands now or formerly constituting the beds and bottoms of all water bodies of every nature and description and all islands and other lands formed by accretion or reliction, except tax lands, owned by and not under mineral lease from the State of Louisiana on July 10, 2002, situated in Cameron Parish, Louisiana, within the following described boundaries: Beginning at a point having Coordinates of X = 1,557,052.00 and Y = 437,864.00; thence West 8,152.00 feet to a point having Coordinates of X = 1,548,900.00 and Y = 437,864.00; thence North 5,249.00 feet to a point having Coordinates of X = 1,548,900.00 and Y = 443,113.00; thence East 8,152.00 feet to a point having Coordinates of X = 1,557,052.00 and Y = 443,113.00; thence South 5,249.00 feet to the point of beginning, containing approximately **982.32 acres**, as shown outlined on a plat on file in the Office of Mineral Resources, Department of Natural Resources, as provided by the applicant. All bearings, distances and coordinates are based on Louisiana Coordinate System of 1927 (South Zone).

NOTE: The above description of the tract nominated for lease has been provided exclusively by the party nominating the tract for lease.

Maps depicting the nominated tract, containing the bearings, distances and coordinates of the nominated tract based on the Louisiana Coordinate System of 1927, North or South Zone, as applicable, are available for public inspection and review at the offices of the Louisiana State Mineral Board from 10:00 a.m. to 3:00 p.m. Monday - Friday.

Any mineral lease selected from the nominated tract and awarded by the Louisiana State Mineral Board shall be without warranty of any kind, either express, implied, or statutory, including, but not limited to, the implied warranties or merchantability and fitness for a particular purpose. Should the mineral lease awarded by the Louisiana State Mineral Board be subsequently modified, cancelled or abrogated due to the existence of conflicting leases, operating agreements, private claims or other existing or future obligations or conditions which may affect all or any portion of the leased tract, it shall not relieve the Lessee of the obligation to pay any bonus due thereon to the Louisiana State Mineral Board, nor shall the Louisiana State Mineral Board be obligated to refund any consideration paid by the Lessee prior to such modification, cancellation, or abrogation, including, but not limited to, bonuses, rents and royalties.

NOTE: The State of Louisiana does hereby reserve, and this lease shall be subject to, the imprescriptible right of surface use in the nature of a servitude in favor of the Department of Natural Resources and/or the Louisiana Department of Wildlife and Fisheries, including its Offices and Commissions, for the sole purpose of implementing, constructing, servicing and maintaining approved coastal zone management and/or restoration

projects. Utilization of any and all rights derived under this lease by the mineral lessee, its agents, successors or assigns, shall not interfere with nor hinder the reasonable surface use by the Department of Natural Resources and/or the Louisiana Department of Wildlife and Fisheries, its Offices or Commissions, as hereinabove reserved.

Applicant: Mohat Properties, L.L.C.



TR 34590
982.32 ± ACS,
JULY, 2002

P.O.B.
X= 1,557,052.00'
Y= 437,864.00'

CAMERON PARISH
GRAND LAKE AREA



176

S.L. 17205

S.L. 17254

K E

G R

A

N

D

TRACT 34591 - Cameron Parish, Louisiana

All of the lands now or formerly constituting the beds and bottoms of all water bodies of every nature and description and all islands and other lands formed by accretion or reliction, except tax lands, owned by and not under mineral lease from the State of Louisiana on July 10, 2002, situated in Cameron Parish, Louisiana, within the following described boundaries: Beginning at a point having Coordinates of X = 1,535,023.00 and Y = 437,864.00; thence South 6,150.00 feet to a point having Coordinates of X = 1,535,023.00 and Y = 431,714.00; thence North 57 degrees 04 minutes 45 seconds West 5,474.00 feet to a point having Coordinates of X = 1,530,428.00 and Y = 434,689.00; thence North approximately 1,055 feet to the Southeast corner of State Lease No. 16957 having a Coordinate of X = 1,530,428.00; thence North approximately 2,120 feet along the East boundary of said State Lease No. 16957 to its Northeast corner having Coordinates of X = 1,530,428.00 and Y = 437,864.00; thence East 4,595.00 feet to the point of beginning, containing approximately **433 acres**, as shown outlined on a plat on file in the Office of Mineral Resources, Department of Natural Resources, as provided by the applicant. All bearings, distances and coordinates are based on Louisiana Coordinate System of 1927 (South Zone).

NOTE: The above description of the tract nominated for lease has been provided exclusively by the party nominating the tract for lease.

Maps depicting the nominated tract, containing the bearings, distances and coordinates of the nominated tract based on the Louisiana Coordinate System of 1927, North or South Zone, as applicable, are available for public inspection and review at the offices of the Louisiana State Mineral Board from 10:00 a.m. to 3:00 p.m. Monday - Friday.

Any mineral lease selected from the nominated tract and awarded by the Louisiana State Mineral Board shall be without warranty of any kind, either express, implied, or statutory, including, but not limited to, the implied warranties or merchantability and fitness for a particular purpose. Should the mineral lease awarded by the Louisiana State Mineral Board be subsequently modified, cancelled or abrogated due to the existence of conflicting leases, operating agreements, private claims or other existing or future obligations or conditions which may affect all or any portion of the leased tract, it shall not relieve the Lessee of the obligation to pay any bonus due thereon to the Louisiana State Mineral Board, nor shall the Louisiana State Mineral Board be obligated to refund any consideration paid by the Lessee prior to such modification, cancellation, or abrogation, including, but not limited to, bonuses, rents and royalties.

NOTE: The State of Louisiana does hereby reserve, and this lease shall be subject to, the imprescriptible right of surface use in the nature of a

servitude in favor of the Department of Natural Resources and/or the Louisiana Department of Wildlife and Fisheries, including its Offices and Commissions, for the sole purpose of implementing, constructing, servicing and maintaining approved coastal zone management and/or restoration projects. Utilization of any and all rights derived under this lease by the mineral lessee, its agents, successors or assigns, shall not interfere with nor hinder the reasonable surface use by the Department of Natural Resources and/or the Louisiana Department of Wildlife and Fisheries, its Offices or Commissions, as hereinabove reserved.

Applicant: Mohat Properties, L.L.C.

S.L. 17253

P.O.B.
X= 1,535,023.00'
Y= 437,864.00'

S.L. 172

L A K



G R A D

TR 34591
433 ± ACS.
JULY, 2002

Lebo Point

S.L. 16957

S.L. 16956

Little
Catfish Lake

CATFISH

LAKE

CAMERON PARISH
GRAND LAKE AREA

TRACT 34592 - Cameron Parish, Louisiana

All of the lands now or formerly constituting the beds and bottoms of all water bodies of every nature and description and all islands and other lands formed by accretion or reliction, except tax lands, owned by and not under mineral lease from the State of Louisiana on July 10, 2002, situated in Cameron Parish, Louisiana, within the following described boundaries: Beginning at a point having Coordinates of X = 1,557,052.00 and Y = 437,864.00; thence South 7,980.00 feet to a point having Coordinates of X = 1,557,052.00 and Y = 429,884.00; thence West 5,155.00 feet to a point having Coordinates of X = 1,551,897.00 and Y = 429,884.00; thence North 7,980.00 feet to a point having Coordinates of X = 1,551,897.00 and Y = 437,864.00; thence East 5,155.00 feet to the point of beginning, containing approximately **944.37 acres**, as shown outlined on a plat on file in the Office of Mineral Resources, Department of Natural Resources, as provided by the applicant. All bearings, distances and coordinates are based on Louisiana Coordinate System of 1927 (South Zone).

NOTE: The above description of the tract nominated for lease has been provided exclusively by the party nominating the tract for lease.

Maps depicting the nominated tract, containing the bearings, distances and coordinates of the nominated tract based on the Louisiana Coordinate System of 1927, North or South Zone, as applicable, are available for public inspection and review at the offices of the Louisiana State Mineral Board from 10:00 a.m. to 3:00 p.m. Monday - Friday.

Any mineral lease selected from the nominated tract and awarded by the Louisiana State Mineral Board shall be without warranty of any kind, either express, implied, or statutory, including, but not limited to, the implied warranties or merchantability and fitness for a particular purpose. Should the mineral lease awarded by the Louisiana State Mineral Board be subsequently modified, cancelled or abrogated due to the existence of conflicting leases, operating agreements, private claims or other existing or future obligations or conditions which may affect all or any portion of the leased tract, it shall not relieve the Lessee of the obligation to pay any bonus due thereon to the Louisiana State Mineral Board, nor shall the Louisiana State Mineral Board be obligated to refund any consideration paid by the Lessee prior to such modification, cancellation, or abrogation, including, but not limited to, bonuses, rents and royalties.

NOTE: The State of Louisiana does hereby reserve, and this lease shall be subject to, the imprescriptible right of surface use in the nature of a servitude in favor of the Department of Natural Resources and/or the Louisiana Department of Wildlife and Fisheries, including its Offices and Commissions, for the sole purpose of implementing, constructing, servicing and maintaining approved coastal zone management and/or restoration

projects. Utilization of any and all rights derived under this lease by the mineral lessee, its agents, successors or assigns, shall not interfere with nor hinder the reasonable surface use by the Department of Natural Resources and/or the Louisiana Department of Wildlife and Fisheries, its Offices or Commissions, as hereinabove reserved.

Applicant: Mohat Properties, L.L.C.

S.L. 17205

S.L. 17254

P.O.B.

X= 1,557,052.00'
Y= 437,864.00'

TR 34592
944.37 ± ACS.
JULY, 2002

C
R
A
N
D
L
A
K
E



S.L. 16958

182

2000' 0' 2000'



Wash
Lake

Betty
Lake

CAMERON PARISH
GRAND LAKE AREA

TRACT 34593 - Cameron Parish, Louisiana

All of the lands now or formerly constituting the beds and bottoms of all water bodies of every nature and description and all islands and other lands formed by accretion or reliction, except tax lands, owned by and not under mineral lease from the State of Louisiana on July 10, 2002, situated in Cameron Parish, Louisiana, within the following described boundaries: Beginning at a point having Coordinates of X = 1,557,052.00 and Y = 437,864.00; thence North 5,249.00 feet to a point having Coordinates of X = 1,557,052.00 and Y = 443,113.00; thence East 7,448.00 feet to a point having Coordinates of X = 1,564,500.00 and Y = 443,113.00; thence South 5,249.00 feet to a point having Coordinates of X = 1,564,500.00 and Y = 437,864.00; thence West 7,448.00 feet to the point of beginning, containing approximately **897.49 acres**, as shown outlined on a plat on file in the Office of Mineral Resources, Department of Natural Resources, as provided by the applicant. All bearings, distances and coordinates are based on Louisiana Coordinate System of 1927 (South Zone).

NOTE: The above description of the tract nominated for lease has been provided exclusively by the party nominating the tract for lease.

Maps depicting the nominated tract, containing the bearings, distances and coordinates of the nominated tract based on the Louisiana Coordinate System of 1927, North or South Zone, as applicable, are available for public inspection and review at the offices of the Louisiana State Mineral Board from 10:00 a.m. to 3:00 p.m. Monday - Friday.

Any mineral lease selected from the nominated tract and awarded by the Louisiana State Mineral Board shall be without warranty of any kind, either express, implied, or statutory, including, but not limited to, the implied warranties or merchantability and fitness for a particular purpose. Should the mineral lease awarded by the Louisiana State Mineral Board be subsequently modified, cancelled or abrogated due to the existence of conflicting leases, operating agreements, private claims or other existing or future obligations or conditions which may affect all or any portion of the leased tract, it shall not relieve the Lessee of the obligation to pay any bonus due thereon to the Louisiana State Mineral Board, nor shall the Louisiana State Mineral Board be obligated to refund any consideration paid by the Lessee prior to such modification, cancellation, or abrogation, including, but not limited to, bonuses, rents and royalties.

NOTE: The State of Louisiana does hereby reserve, and this lease shall be subject to, the imprescriptible right of surface use in the nature of a servitude in favor of the Department of Natural Resources and/or the Louisiana Department of Wildlife and Fisheries, including its Offices and Commissions, for the sole purpose of implementing, constructing, servicing and maintaining approved coastal zone management and/or restoration

projects. Utilization of any and all rights derived under this lease by the mineral lessee, its agents, successors or assigns, shall not interfere with nor hinder the reasonable surface use by the Department of Natural Resources and/or the Louisiana Department of Wildlife and Fisheries, its Offices or Commissions, as hereinabove reserved.

Applicant: Mohat Properties, L.L.C.



185

2000' 0' 2000'



BAY

UMBRELLA

Shot Point

TR 34593
897.49 ± ACS,
JULY, 2002

P.O.B.
X= 1,557,052.00'
Y= 437,864.00'

G

R

N

D

L

A

K

E

CAMERON PARISH
GRAND LAKE AREA

TRACT 34594 - Cameron Parish, Louisiana

All of the lands now or formerly constituting the beds and bottoms of all water bodies of every nature and description and all islands and other lands formed by accretion or reliction, except tax lands, owned by and not under mineral lease from the State of Louisiana on July 10, 2002, situated in Cameron Parish, Louisiana, within the following described boundaries: Beginning at a point having Coordinates of X = 1,557,052.00 and Y = 437,864.00; thence East 5,342.00 feet to a point having Coordinates of X = 1,562,394.00 and Y = 437,864.00; thence South 7,980.00 feet to a point having Coordinates of X = 1,562,394.00 and Y = 429,884.00; thence West 5,342.00 feet to a point having Coordinates of X = 1,557,052.00 and Y = 429,884.00; thence North 7,980.00 feet to the point of beginning, containing approximately **978.63 acres**, as shown outlined on a plat on file in the Office of Mineral Resources, Department of Natural Resources, as provided by the applicant. All bearings, distances and coordinates are based on Louisiana Coordinate System of 1927 (South Zone).

NOTE: The above description of the tract nominated for lease has been provided exclusively by the party nominating the tract for lease.

Maps depicting the nominated tract, containing the bearings, distances and coordinates of the nominated tract based on the Louisiana Coordinate System of 1927, North or South Zone, as applicable, are available for public inspection and review at the offices of the Louisiana State Mineral Board from 10:00 a.m. to 3:00 p.m. Monday - Friday.

Any mineral lease selected from the nominated tract and awarded by the Louisiana State Mineral Board shall be without warranty of any kind, either express, implied, or statutory, including, but not limited to, the implied warranties or merchantability and fitness for a particular purpose. Should the mineral lease awarded by the Louisiana State Mineral Board be subsequently modified, cancelled or abrogated due to the existence of conflicting leases, operating agreements, private claims or other existing or future obligations or conditions which may affect all or any portion of the leased tract, it shall not relieve the Lessee of the obligation to pay any bonus due thereon to the Louisiana State Mineral Board, nor shall the Louisiana State Mineral Board be obligated to refund any consideration paid by the Lessee prior to such modification, cancellation, or abrogation, including, but not limited to, bonuses, rents and royalties.

NOTE: The State of Louisiana does hereby reserve, and this lease shall be subject to, the imprescriptible right of surface use in the nature of a servitude in favor of the Department of Natural Resources and/or the Louisiana Department of Wildlife and Fisheries, including its Offices and Commissions, for the sole purpose of implementing, constructing, servicing and maintaining approved coastal zone management and/or restoration

projects. Utilization of any and all rights derived under this lease by the mineral lessee, its agents, successors or assigns, shall not interfere with nor hinder the reasonable surface use by the Department of Natural Resources and/or the Louisiana Department of Wildlife and Fisheries, its Offices or Commissions, as hereinabove reserved.

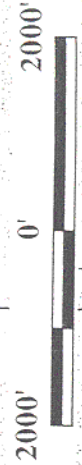
Applicant: Mohat Properties, L.L.C.

P.O.B.
X= 1,557,052.00'
Y= 437,864.00'

TR 34594
978.63 ± ACS.
JULY, 2002

S.L. 16958

CAMERON PARISH
GRAND LAKE AREA



TRACT 34595 - Cameron Parish, Louisiana

All of the lands now or formerly constituting the beds and bottoms of all water bodies of every nature and description and all islands and other lands formed by accretion or reliction, except tax lands, owned by and not under mineral lease from the State of Louisiana on July 10, 2002, situated in Cameron Parish, Louisiana, within the following described boundaries: Beginning at a point having Coordinates of X = 1,562,394.00 and Y = 429,884.00; thence North 7,980.00 feet to a point having Coordinates of X = 1,562,394.00 and Y = 437,864.00; thence East 6,053.00 feet to a point having Coordinates of X = 1,568,447.00 and Y = 437,864.00; thence South 7,980.00 feet to a point having Coordinates of X = 1,568,447.00 and Y = 429,884.00; thence West 2,126.00 feet to the Northeast corner of State Lease No. 16958 having Coordinates of X = 1,566,321.00 and Y = 429,884.00; thence West 3,333.00 feet along the North boundary of said State Lease No. 16958 to its Northwest corner having Coordinates of X = 1,562,988.00 and Y = 429,884.00; thence West 594.00 feet to the point of beginning, containing approximately **1,108.88 acres**, as shown outlined on a plat on file in the Office of Mineral Resources, Department of Natural Resources, as provided by the applicant. All bearings, distances and coordinates are based on Louisiana Coordinate System of 1927 (South Zone).

NOTE: The above description of the tract nominated for lease has been provided exclusively by the party nominating the tract for lease.

Maps depicting the nominated tract, containing the bearings, distances and coordinates of the nominated tract based on the Louisiana Coordinate System of 1927, North or South Zone, as applicable, are available for public inspection and review at the offices of the Louisiana State Mineral Board from 10:00 a.m. to 3:00 p.m. Monday - Friday.

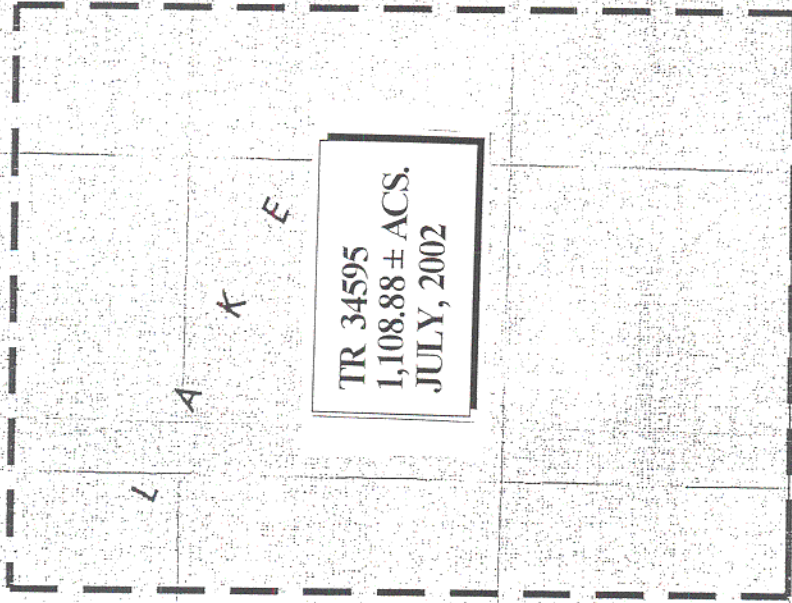
Any mineral lease selected from the nominated tract and awarded by the Louisiana State Mineral Board shall be without warranty of any kind, either express, implied, or statutory, including, but not limited to, the implied warranties or merchantability and fitness for a particular purpose. Should the mineral lease awarded by the Louisiana State Mineral Board be subsequently modified, cancelled or abrogated due to the existence of conflicting leases, operating agreements, private claims or other existing or future obligations or conditions which may affect all or any portion of the leased tract, it shall not relieve the Lessee of the obligation to pay any bonus due thereon to the Louisiana State Mineral Board, nor shall the Louisiana State Mineral Board be obligated to refund any consideration paid by the Lessee prior to such modification, cancellation, or abrogation, including, but not limited to, bonuses, rents and royalties.

NOTE: The State of Louisiana does hereby reserve, and this lease shall be subject to, the imprescriptible right of surface use in the nature of a

servitude in favor of the Department of Natural Resources and/or the Louisiana Department of Wildlife and Fisheries, including its Offices and Commissions, for the sole purpose of implementing, constructing, servicing and maintaining approved coastal zone management and/or restoration projects. Utilization of any and all rights derived under this lease by the mineral lessee, its agents, successors or assigns, shall not interfere with nor hinder the reasonable surface use by the Department of Natural Resources and/or the Louisiana Department of Wildlife and Fisheries, its Offices or Commissions, as hereinabove reserved.

Applicant: Mohat Properties, L.L.C.

G R A N D



TR 34595
1,108.88 ± ACS.
JULY, 2002

P.O.B.
X= 1,562,394.00'
Y= 429,884.00'

S.L. 16958

CAMERON PARISH
GRAND LAKE AREA



TRACT 34596 - Cameron Parish, Louisiana

All of the lands now or formerly constituting the beds and bottoms of all water bodies of every nature and description and all islands and other lands formed by accretion or reliction, except tax lands, owned by and not under mineral lease from the State of Louisiana on July 10, 2002, situated in Cameron Parish, Louisiana, within the following described boundaries: Beginning at a point having Coordinates of X = 1,562,394.00 and Y = 429,884.00; thence East 594.00 feet to the Northwest corner of State Lease No. 16958 having Coordinates of X = 1,562,988.00 and Y = 429,884.00; thence South 4,784.00 feet along the West boundary of said State Lease No. 16958 to its Southwest corner having Coordinates of X = 1,562,988.00 and Y = 425,100.00; thence East 3,333.00 feet along the South boundary of said State Lease No. 16958 to its Southeast corner having Coordinates of X = 1,566,321.00 and Y = 425,100.00; thence North 4,784.00 feet along the East boundary of said State Lease No. 16958 to its Northeast corner having Coordinates of X = 1,566,321.00 and Y = 429,884.00; thence East 2,126.00 feet to a point having Coordinates of X = 1,568,447.00 and Y = 429,884.00; thence South 8,000.00 feet to a point having Coordinates of X = 1,568,447.00 and Y = 421,884.00; thence West 3,560.00 feet to a point having Coordinates of X = 1,564,887.00 and Y = 421,884.00; thence North 60 degrees 40 minutes 57 seconds West 2,859.20 feet to a point having Coordinates of X = 1,562,394.00 and Y = 423,284.00; thence North 6,600.00 feet to the point of beginning, containing approximately **634 acres**, as shown outlined on a plat on file in the Office of Mineral Resources, Department of Natural Resources, as provided by the applicant. All bearings, distances and coordinates are based on Louisiana Coordinate System of 1927 (South Zone).

NOTE: The above description of the tract nominated for lease has been provided exclusively by the party nominating the tract for lease.

Maps depicting the nominated tract, containing the bearings, distances and coordinates of the nominated tract based on the Louisiana Coordinate System of 1927, North or South Zone, as applicable, are available for public inspection and review at the offices of the Louisiana State Mineral Board from 10:00 a.m. to 3:00 p.m. Monday - Friday.

Any mineral lease selected from the nominated tract and awarded by the Louisiana State Mineral Board shall be without warranty of any kind, either express, implied, or statutory, including, but not limited to, the implied warranties or merchantability and fitness for a particular purpose. Should the mineral lease awarded by the Louisiana State Mineral Board be subsequently modified, cancelled or abrogated due to the existence of conflicting leases, operating agreements, private claims or other existing or future obligations or conditions which may affect all or any portion of the leased tract, it shall not relieve the Lessee of the obligation to pay any bonus due thereon to the Louisiana State Mineral

Board, nor shall the Louisiana State Mineral Board be obligated to refund any consideration paid by the Lessee prior to such modification, cancellation, or abrogation, including, but not limited to, bonuses, rents and royalties.

NOTE: The State of Louisiana does hereby reserve, and this lease shall be subject to, the imprescriptible right of surface use in the nature of a servitude in favor of the Department of Natural Resources and/or the Louisiana Department of Wildlife and Fisheries, including its Offices and Commissions, for the sole purpose of implementing, constructing, servicing and maintaining approved coastal zone management and/or restoration projects. Utilization of any and all rights derived under this lease by the mineral lessee, its agents, successors or assigns, shall not interfere with nor hinder the reasonable surface use by the Department of Natural Resources and/or the Louisiana Department of Wildlife and Fisheries, its Offices or Commissions, as hereinabove reserved.

Applicant: Mohat Properties, L.L.C.

P.O.B.
X= 1,562,394.00'
Y= 429,884.00'

S.L. 16958

TR 34596
634 ± ACS.
JULY, 2002

16
Cheniere
du Fond

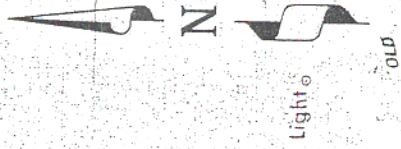
17
East
Lake

18
Long
Lake

19
Little
Lake Benoit

Wash
Lake

CAMERON PARISH
GRAND LAKE AREA



0' 2000' 2000'

194

x4

TRACT 34597 - Cameron Parish, Louisiana

All of the lands now or formerly constituting the beds and bottoms of all water bodies of every nature and description and all islands and other lands formed by accretion or reliction, except tax lands, owned by and not under mineral lease from the State of Louisiana on July 10, 2002, situated in Cameron Parish, Louisiana, within the following described boundaries: Beginning at a point having Coordinates of X = 1,562,394.00 and Y = 429,884.00; thence South 6,600.00 feet to a point having Coordinates of X = 1,562,394.00 and Y = 423,284.00; thence North 69 degrees 14 minutes 08 seconds West 11,226.19 feet to a point having Coordinates of X = 1,551,897.00 and Y = 427,264.00; thence North 2,620.00 feet to a point having Coordinates of X = 1,551,897.00 and Y = 429,884.00; thence East 10,497.00 feet to the point of beginning, containing approximately **925 acres**, as shown outlined on a plat on file in the Office of Mineral Resources, Department of Natural Resources, as provided by the applicant. All bearings, distances and coordinates are based on Louisiana Coordinate System of 1927 (South Zone).

NOTE: The above description of the tract nominated for lease has been provided exclusively by the party nominating the tract for lease.

Maps depicting the nominated tract, containing the bearings, distances and coordinates of the nominated tract based on the Louisiana Coordinate System of 1927, North or South Zone, as applicable, are available for public inspection and review at the offices of the Louisiana State Mineral Board from 10:00 a.m. to 3:00 p.m. Monday - Friday.

Any mineral lease selected from the nominated tract and awarded by the Louisiana State Mineral Board shall be without warranty of any kind, either express, implied, or statutory, including, but not limited to, the implied warranties or merchantability and fitness for a particular purpose. Should the mineral lease awarded by the Louisiana State Mineral Board be subsequently modified, cancelled or abrogated due to the existence of conflicting leases, operating agreements, private claims or other existing or future obligations or conditions which may affect all or any portion of the leased tract, it shall not relieve the Lessee of the obligation to pay any bonus due thereon to the Louisiana State Mineral Board, nor shall the Louisiana State Mineral Board be obligated to refund any consideration paid by the Lessee prior to such modification, cancellation, or abrogation, including, but not limited to, bonuses, rents and royalties.

NOTE: The State of Louisiana does hereby reserve, and this lease shall be subject to, the imprescriptible right of surface use in the nature of a servitude in favor of the Department of Natural Resources and/or the Louisiana Department of Wildlife and Fisheries, including its Offices and Commissions, for the sole purpose of implementing, constructing, servicing

and maintaining approved coastal zone management and/or restoration projects. Utilization of any and all rights derived under this lease by the mineral lessee, its agents, successors or assigns, shall not interfere with nor hinder the reasonable surface use by the Department of Natural Resources and/or the Louisiana Department of Wildlife and Fisheries, its Offices or Commissions, as hereinabove reserved.

Applicant: Mohat Properties, L.L.C.



S.L. 16958

P.O.B.
X= 1,562,394.00'
Y= 429,884.00'

TR 34597
925 ± ACS.
JULY, 2002

17
East Lake

18
Long Lake

Wash Lake

Lake Benoit

Little Lake Benoit

CAMERON PARISH
GRAND LAKE AREA



19

TRACT 34598 - Cameron Parish, Louisiana

All of the lands now or formerly constituting the beds and bottoms of all water bodies of every nature and description and all islands and other lands formed by accretion or reliction, except tax lands, owned by and not under mineral lease from the State of Louisiana on July 10, 2002, situated in Cameron Parish, Louisiana, within the following described boundaries: Beginning at a point having Coordinates of X = 1,568,447.00 and Y = 429,884.00; thence North 7,980.00 feet to a point having Coordinates of X = 1,568,447.00 and Y = 437,864.00; thence East 5,221.00 feet to a point having Coordinates of X = 1,573,668.00 and Y = 437,864.00; thence South 7,980.00 feet to a point having Coordinates of X = 1,573,668.00 and Y = 429,884.00; thence West 5,221.00 feet to the point of beginning, containing approximately **956.46 acres**, as shown outlined on a plat on file in the Office of Mineral Resources, Department of Natural Resources, as provided by the applicant. All bearings, distances and coordinates are based on Louisiana Coordinate System of 1927 (South Zone).

NOTE: The above description of the tract nominated for lease has been provided exclusively by the party nominating the tract for lease.

Maps depicting the nominated tract, containing the bearings, distances and coordinates of the nominated tract based on the Louisiana Coordinate System of 1927, North or South Zone, as applicable, are available for public inspection and review at the offices of the Louisiana State Mineral Board from 10:00 a.m. to 3:00 p.m. Monday - Friday.

Any mineral lease selected from the nominated tract and awarded by the Louisiana State Mineral Board shall be without warranty of any kind, either express, implied, or statutory, including, but not limited to, the implied warranties or merchantability and fitness for a particular purpose. Should the mineral lease awarded by the Louisiana State Mineral Board be subsequently modified, cancelled or abrogated due to the existence of conflicting leases, operating agreements, private claims or other existing or future obligations or conditions which may affect all or any portion of the leased tract, it shall not relieve the Lessee of the obligation to pay any bonus due thereon to the Louisiana State Mineral Board, nor shall the Louisiana State Mineral Board be obligated to refund any consideration paid by the Lessee prior to such modification, cancellation, or abrogation, including, but not limited to, bonuses, rents and royalties.

NOTE: The State of Louisiana does hereby reserve, and this lease shall be subject to, the imprescriptible right of surface use in the nature of a servitude in favor of the Department of Natural Resources and/or the Louisiana Department of Wildlife and Fisheries, including its Offices and Commissions, for the sole purpose of implementing, constructing, servicing and maintaining approved coastal zone management and/or restoration

projects. Utilization of any and all rights derived under this lease by the mineral lessee, its agents, successors or assigns, shall not interfere with nor hinder the reasonable surface use by the Department of Natural Resources and/or the Louisiana Department of Wildlife and Fisheries, its Offices or Commissions, as hereinabove reserved.

Applicant: Mohat Properties, L.L.C.

N
D
L
A
K
E

N

TR 34598
956.46 ± ACS.
JULY, 2002

P.O.B.
X= 1,568,447.00'
Y= 429,884.00'

SL 16958

CAMERON PARISH
GRAND LAKE AREA

Light

old

2000'

0'

2000'

INTRAC

TRACT 34599 - Cameron Parish, Louisiana

All of the lands now or formerly constituting the beds and bottoms of all water bodies of every nature and description and all islands and other lands formed by accretion or reliction, except tax lands, owned by and not under mineral lease from the State of Louisiana on July 10, 2002, situated in Cameron Parish, Louisiana, within the following described boundaries: Beginning at a point having Coordinates of X = 1,568,447.00 and Y = 429,884.00; thence East 5,221.00 feet to a point having Coordinates of X = 1,573,668.00 and Y = 429,884.00; thence South 6,550.00 feet to a point having Coordinates of X = 1,573,668.00 and Y = 423,334.00; thence South 64 degrees 05 minutes 36 seconds West 3,318.80 feet to a point having Coordinates of X = 1,570,682.71 and Y = 421,884.00; thence West 2,235.71 feet to a point having Coordinates of X = 1,568,447.00 and Y = 421,884.00; thence North 8,000.00 feet to the point of beginning, containing approximately **830 acres**, as shown outlined on a plat on file in the Office of Mineral Resources, Department of Natural Resources, as provided by the applicant. All bearings, distances and coordinates are based on Louisiana Coordinate System of 1927 (South Zone).

NOTE: The above description of the tract nominated for lease has been provided exclusively by the party nominating the tract for lease.

Maps depicting the nominated tract, containing the bearings, distances and coordinates of the nominated tract based on the Louisiana Coordinate System of 1927, North or South Zone, as applicable, are available for public inspection and review at the offices of the Louisiana State Mineral Board from 10:00 a.m. to 3:00 p.m. Monday - Friday.

Any mineral lease selected from the nominated tract and awarded by the Louisiana State Mineral Board shall be without warranty of any kind, either express, implied, or statutory, including, but not limited to, the implied warranties or merchantability and fitness for a particular purpose. Should the mineral lease awarded by the Louisiana State Mineral Board be subsequently modified, cancelled or abrogated due to the existence of conflicting leases, operating agreements, private claims or other existing or future obligations or conditions which may affect all or any portion of the leased tract, it shall not relieve the Lessee of the obligation to pay any bonus due thereon to the Louisiana State Mineral Board, nor shall the Louisiana State Mineral Board be obligated to refund any consideration paid by the Lessee prior to such modification, cancellation, or abrogation, including, but not limited to, bonuses, rents and royalties.

NOTE: The State of Louisiana does hereby reserve, and this lease shall be subject to, the imprescriptible right of surface use in the nature of a servitude in favor of the Department of Natural Resources and/or the Louisiana Department of Wildlife and Fisheries, including its Offices and

Commissions, for the sole purpose of implementing, constructing, servicing and maintaining approved coastal zone management and/or restoration projects. Utilization of any and all rights derived under this lease by the mineral lessee, its agents, successors or assigns, shall not interfere with nor hinder the reasonable surface use by the Department of Natural Resources and/or the Louisiana Department of Wildlife and Fisheries, its Offices or Commissions, as hereinabove reserved.

Applicant: Mohat Properties, L.L.C.

P.O.B.
X= 1,568,447.00'
Y= 429,884.00'

S.L. 16958

TR 34599
830 ± ACS.
JULY, 2002

16
Cheniere
du Fond

light

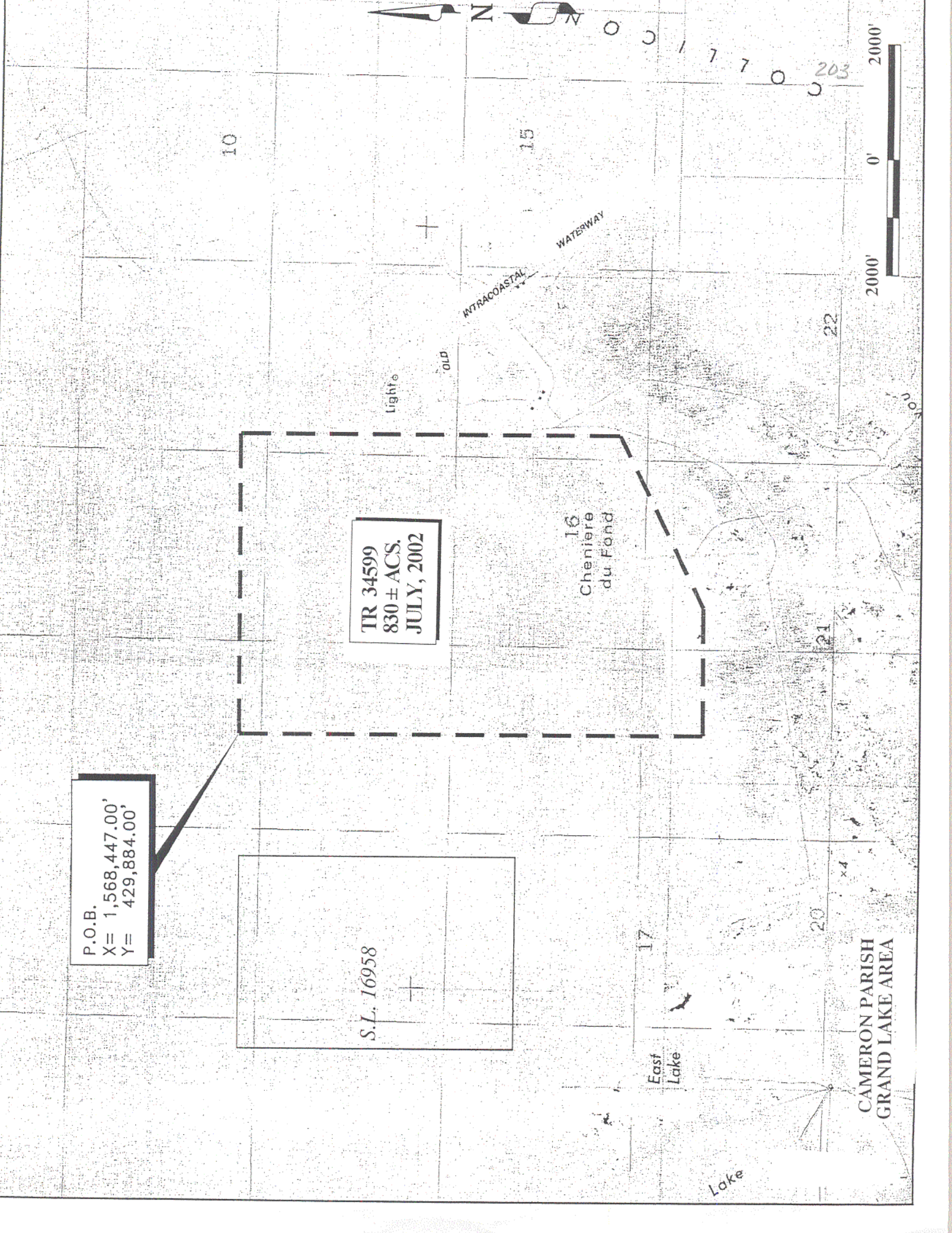
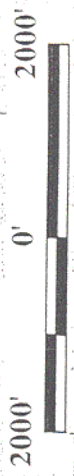
old

INTRACOASTAL
WATERWAY

East
Lake

Lake

CAMERON PARISH
GRAND LAKE AREA



TRACT 34600 - Cameron Parish, Louisiana

All of the lands now or formerly constituting the beds and bottoms of all water bodies of every nature and description and all islands and other lands formed by accretion or reliction, except tax lands, owned by and not under mineral lease from the State of Louisiana on July 10, 2002, situated in Cameron Parish, Louisiana, within the following described boundaries: Beginning at a point having Coordinates of X = 1,573,668.00 and Y = 437,864.00; thence East 6,900.00 feet to a point having Coordinates of X = 1,580,568.00 and Y = 437,864.00; thence South 24 degrees 04 minutes 17 seconds West 5,280.00 feet to a point having Coordinates of X = 1,578,414.43 and Y = 433,043.16; thence South 49 degrees 44 minutes 50 seconds West 2,500.00 feet to a point having Coordinates of X = 1,576,506.42 and Y = 431,427.76; thence South 07 degrees 28 minutes 39 seconds East 3,200.00 feet to a point having Coordinates of X = 1,576,922.85 and Y = 428,254.97; thence South 33 degrees 28 minutes 54 seconds West 5,900.00 feet to a point having Coordinates of X = 1,573,668.00 and Y = 423,334.00; thence North 14,530.00 feet to the point of beginning, containing approximately **949 acres**, as shown outlined on a plat on file in the Office of Mineral Resources, Department of Natural Resources, as provided by the applicant. All bearings, distances and coordinates are based on Louisiana Coordinate System of 1927 (South Zone).

NOTE: The above description of the tract nominated for lease has been provided exclusively by the party nominating the tract for lease.

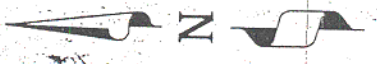
Maps depicting the nominated tract, containing the bearings, distances and coordinates of the nominated tract based on the Louisiana Coordinate System of 1927, North or South Zone, as applicable, are available for public inspection and review at the offices of the Louisiana State Mineral Board from 10:00 a.m. to 3:00 p.m. Monday - Friday.

Any mineral lease selected from the nominated tract and awarded by the Louisiana State Mineral Board shall be without warranty of any kind, either express, implied, or statutory, including, but not limited to, the implied warranties or merchantability and fitness for a particular purpose. Should the mineral lease awarded by the Louisiana State Mineral Board be subsequently modified, cancelled or abrogated due to the existence of conflicting leases, operating agreements, private claims or other existing or future obligations or conditions which may affect all or any portion of the leased tract, it shall not relieve the Lessee of the obligation to pay any bonus due thereon to the Louisiana State Mineral Board, nor shall the Louisiana State Mineral Board be obligated to refund any consideration paid by the Lessee prior to such modification, cancellation, or abrogation, including, but not limited to, bonuses, rents and royalties.

NOTE: The State of Louisiana does hereby reserve, and this lease shall be subject to, the imprescriptible right of surface use in the nature of a servitude in favor of the Department of Natural Resources and/or the Louisiana Department of Wildlife and Fisheries, including its Offices and Commissions, for the sole purpose of implementing, constructing, servicing and maintaining approved coastal zone management and/or restoration projects. Utilization of any and all rights derived under this lease by the mineral lessee, its agents, successors or assigns, shall not interfere with nor hinder the reasonable surface use by the Department of Natural Resources and/or the Louisiana Department of Wildlife and Fisheries, its Offices or Commissions, as hereinabove reserved.

Applicant: Mohat Properties, L.L.C.

BLACKPSS



Blackfish Bay

200



Round Lake

L A K E

10

15

TR 34600
949 ± ACS.
JULY, 2002

INTRACOASTAL
WATERWAY

Light

old

16
Cheniere
du Fond

P.O.B.
X= 1,573,668.00'
Y= 437,864.00'

CAMERON PARISH
GRAND LAKE AREA

S.L. 16958

TRACT 34601 - Terrebonne Parish, Louisiana

All of the lands now or formerly constituting the beds and bottoms of all water bodies of every nature and description and all islands and other lands formed by accretion or reliction, except tax lands, owned by and not under mineral lease from the State of Louisiana on July 10, 2002, situated in Terrebonne Parish, Louisiana, within the following described boundaries: Beginning at the Northwest corner of State Lease No. 17210 having Coordinates of X = 2,049,655.00 and Y = 298,690.00; thence South 01 degrees 46 minutes 10 seconds East 5,412.58 feet on the West line of said State Lease No. 17210 to the Northeast corner of State Lease No. 17335 having Coordinates of X = 2,049,822.12 and Y = 293,280.00; thence West 5,442.12 feet along the North line of said State Lease No. 17335 to a point having Coordinates of X = 2,044,380.00 and Y = 293,280.00; thence North 2,790.00 feet to a point having Coordinates of X = 2,044,380.00 and Y = 296,070.00; thence East 2,670.00 feet to a point having Coordinates of X = 2,047,050.00 and Y = 296,070.00; thence North 2,620.00 feet to a point having Coordinates of X = 2,047,050.00 and Y = 298,690.00; thence East 2,605.00 feet to the point of beginning, containing approximately **13 acres**, as shown outlined on a plat on file in the Office of Mineral Resources, Department of Natural Resources, as provided by the applicant. All bearings, distances and coordinates are based on Louisiana Coordinate System of 1927 (South Zone).

NOTE: The above description of the tract nominated for lease has been provided exclusively by the party nominating the tract for lease.

Maps depicting the nominated tract, containing the bearings, distances and coordinates of the nominated tract based on the Louisiana Coordinate System of 1927, North or South Zone, as applicable, are available for public inspection and review at the offices of the Louisiana State Mineral Board from 10:00 a.m. to 3:00 p.m. Monday - Friday.

Any mineral lease selected from the nominated tract and awarded by the Louisiana State Mineral Board shall be without warranty of any kind, either express, implied, or statutory, including, but not limited to, the implied warranties or merchantability and fitness for a particular purpose. Should the mineral lease awarded by the Louisiana State Mineral Board be subsequently modified, cancelled or abrogated due to the existence of conflicting leases, operating agreements, private claims or other existing or future obligations or conditions which may affect all or any portion of the leased tract, it shall not relieve the Lessee of the obligation to pay any bonus due thereon to the Louisiana State Mineral Board, nor shall the Louisiana State Mineral Board be obligated to refund any consideration paid by the Lessee prior to such modification, cancellation, or abrogation, including, but not limited to, bonuses, rents and royalties.

NOTE: The State of Louisiana does hereby reserve, and this lease shall be subject to, the imprescriptible right of surface use in the nature of a servitude in favor of the Department of Natural Resources and/or the Louisiana Department of Wildlife and Fisheries, including its Offices and Commissions, for the sole purpose of implementing, constructing, servicing and maintaining approved coastal zone management and/or restoration projects. Utilization of any and all rights derived under this lease by the mineral lessee, its agents, successors or assigns, shall not interfere with nor hinder the reasonable surface use by the Department of Natural Resources and/or the Louisiana Department of Wildlife and Fisheries, its Offices or Commissions, as hereinabove reserved.

Applicant: Audubon Oil and Gas Corporation

R 12 E

PIPELINE 209

P. O. B.
X=2,049,655.00
Y= 298,690.00

PROPOSED TRACT
±13 Acres

TR 34601
13± ACS.
JULY, 2002

GAS FIELD

SL 17210

SL 17335

BAYOU

NAD 27 LAMBERT LA. SOUTH ZONE

Terrebonne Parish, Louisiana

2000' 0' 2000'

TRACT 34602 - Terrebonne Parish, Louisiana

All of the lands now or formerly constituting the beds and bottoms of all water bodies of every nature and description and all islands and other lands formed by accretion or reliction, except tax lands, owned by and not under mineral lease from the State of Louisiana on July 10, 2002, situated in Terrebonne Parish, Louisiana, within the following described boundaries: Beginning at a point having Coordinates of X = 2,150,439.00 and Y = 167,991.30, said point also being on the East boundary of State of Louisiana - State Lease No. 16100; thence North 40 degrees 02 minutes 10 seconds East 3,999.83 feet to a point having Coordinates of X = 2,153,011.98 and Y = 171,053.72; thence North 89 degrees 55 minutes 10 seconds East 5,150.66 feet to a point having Coordinates of X = 2,158,162.64 and Y = 171,060.97; thence South 01 degrees 00 minutes 16 seconds East 6,038.12 feet to a point having Coordinates of X = 2,158,268.47 and Y = 165,023.78; thence South 89 degrees 38 minutes 29 seconds West 7,829.63 feet to a point having Coordinates of X = 2,150,439.00 and Y = 164,974.76, said point also being on said East boundary of said State of Louisiana - State Lease No. 16100; thence North 3,016.54 feet on and along said East boundary of said State of Louisiana - State Lease No. 16100 to the point of beginning, containing approximately **747 acres**, as shown outlined on a plat on file in the Office of Mineral Resources, Department of Natural Resources, as provided by the applicant. All bearings, distances and coordinates are based on Louisiana Coordinate System of 1927 (South Zone).

NOTE: The above description of the tract nominated for lease has been provided exclusively by the party nominating the tract for lease.

Maps depicting the nominated tract, containing the bearings, distances and coordinates of the nominated tract based on the Louisiana Coordinate System of 1927, North or South Zone, as applicable, are available for public inspection and review at the offices of the Louisiana State Mineral Board from 10:00 a.m. to 3:00 p.m. Monday - Friday.

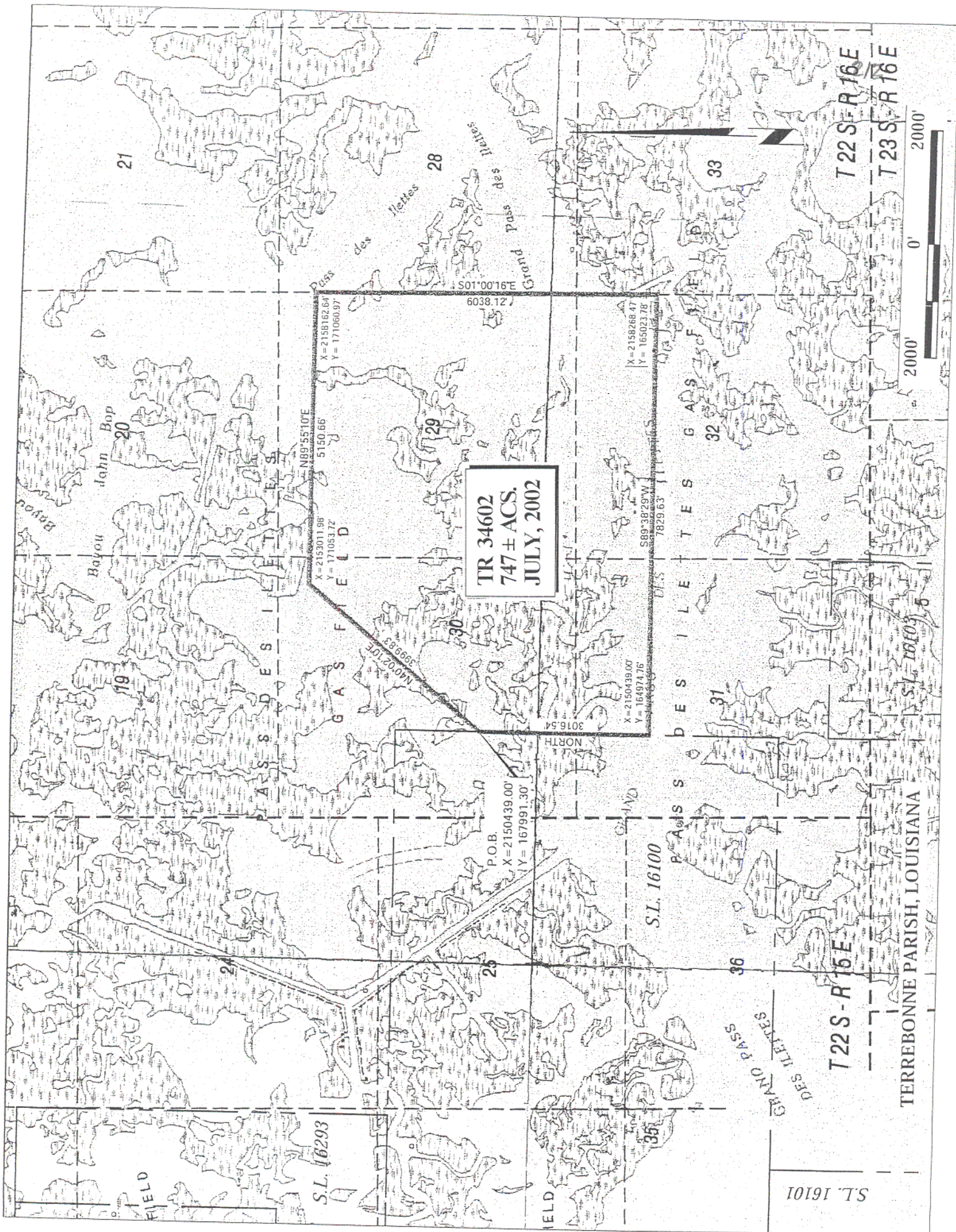
Any mineral lease selected from the nominated tract and awarded by the Louisiana State Mineral Board shall be without warranty of any kind, either express, implied, or statutory, including, but not limited to, the implied warranties or merchantability and fitness for a particular purpose. Should the mineral lease awarded by the Louisiana State Mineral Board be subsequently modified, cancelled or abrogated due to the existence of conflicting leases, operating agreements, private claims or other existing or future obligations or conditions which may affect all or any portion of the leased tract, it shall not relieve the Lessee of the obligation to pay any bonus due thereon to the Louisiana State Mineral Board, nor shall the Louisiana State Mineral Board be obligated to refund any consideration paid by the Lessee prior to such modification,

cancellation, or abrogation, including, but not limited to, bonuses, rents and royalties.

NOTE: The Department of Wildlife and Fisheries has designated certain areas in the coastal waters of the State of Louisiana as Oyster Seed Bed Areas. The exact location of those Seed Bed Areas must be obtained from Wildlife and Fisheries and any work done under an oil, gas and other liquid or gaseous mineral lease from the State of Louisiana must be conducted in conformity with the rules and regulations promulgated by the said Department of Wildlife and Fisheries for Oyster Seed Bed Areas.

NOTE: The State of Louisiana does hereby reserve, and this lease shall be subject to, the imprescriptible right of surface use in the nature of a servitude in favor of the Department of Natural Resources and/or the Louisiana Department of Wildlife and Fisheries, including its Offices and Commissions, for the sole purpose of implementing, constructing, servicing and maintaining approved coastal zone management and/or restoration projects. Utilization of any and all rights derived under this lease by the mineral lessee, its agents, successors or assigns, shall not interfere with nor hinder the reasonable surface use by the Department of Natural Resources and/or the Louisiana Department of Wildlife and Fisheries, its Offices or Commissions, as hereinabove reserved.

Applicant: The Louisiana Land and Exploration Company



TRACT 34603 - Terrebonne Parish, Louisiana

All of the lands now or formerly constituting the beds and bottoms of all water bodies of every nature and description and all islands and other lands formed by accretion or reliction, except tax lands, owned by and not under mineral lease from the State of Louisiana on July 10, 2002, situated in Terrebonne Parish, Louisiana, within the following described boundaries: Beginning at a point having Coordinates of X = 2,150,439.19 and Y = 161,733.96, said point also being the Northwest corner of State of Louisiana - State Lease No. 16103, as amended; thence North 00 degrees 00 minutes 43 seconds West 907.04 feet to a point having Coordinates of X = 2,150,439.00 and Y = 162,641.00, said point also being the Southeast corner of State of Louisiana - State Lease No. 16100; thence North 2,333.76 feet on and along the East boundary of said State of Louisiana - State Lease No. 16100 to a point having Coordinates of X = 2,150,439.00 and Y = 164,974.76; thence North 89 degrees 38 minutes 29 seconds East 7,829.63 feet to a point having Coordinates of X = 2,158,268.47 and Y = 165,023.78; thence South 01 degrees 00 minutes 16 seconds East 7,016.04 feet to a point having Coordinates of X = 2,158,391.45 and Y = 158,008.81; thence South 88 degrees 28 minutes 32 seconds West 4,781.49 feet to a point having Coordinates of X = 2,153,611.65 and Y = 157,881.61, said point also being on the East boundary of said State of Louisiana - State Lease No. 16103, as amended; thence on and along the East and North boundaries of said State of Louisiana - State Lease No. 16103, as amended, the following courses and distances, to-wit: North 3,852.35 feet to a point having Coordinates of X = 2,153,611.65 and Y = 161,733.96, said point also being the Northeast corner of said State of Louisiana - State Lease No. 16103, as amended; and West 3,172.46 feet to the point of beginning, containing approximately **630 acres**, as shown outlined on a plat on file in the Office of Mineral Resources, Department of Natural Resources, as provided by the applicant. All bearings, distances and coordinates are based on Louisiana Coordinate System of 1927 (South Zone).

NOTE: The above description of the tract nominated for lease has been provided exclusively by the party nominating the tract for lease.

Maps depicting the nominated tract, containing the bearings, distances and coordinates of the nominated tract based on the Louisiana Coordinate System of 1927, North or South Zone, as applicable, are available for public inspection and review at the offices of the Louisiana State Mineral Board from 10:00 a.m. to 3:00 p.m. Monday - Friday.

Any mineral lease selected from the nominated tract and awarded by the Louisiana State Mineral Board shall be without warranty of any kind, either express, implied, or statutory, including, but not limited to, the implied warranties or merchantability and fitness for a particular purpose. Should the mineral lease awarded by the Louisiana State Mineral Board be subsequently modified, cancelled or abrogated due to the

existence of conflicting leases, operating agreements, private claims or other existing or future obligations or conditions which may affect all or any portion of the leased tract, it shall not relieve the Lessee of the obligation to pay any bonus due thereon to the Louisiana State Mineral Board, nor shall the Louisiana State Mineral Board be obligated to refund any consideration paid by the Lessee prior to such modification, cancellation, or abrogation, including, but not limited to, bonuses, rents and royalties.

NOTE: The Department of Wildlife and Fisheries has designated certain areas in the coastal waters of the State of Louisiana as Oyster Seed Bed Areas. The exact location of those Seed Bed Areas must be obtained from Wildlife and Fisheries and any work done under an oil, gas and other liquid or gaseous mineral lease from the State of Louisiana must be conducted in conformity with the rules and regulations promulgated by the said Department of Wildlife and Fisheries for Oyster Seed Bed Areas.

NOTE: The State of Louisiana does hereby reserve, and this lease shall be subject to, the imprescriptible right of surface use in the nature of a servitude in favor of the Department of Natural Resources and/or the Louisiana Department of Wildlife and Fisheries, including its Offices and Commissions, for the sole purpose of implementing, constructing, servicing and maintaining approved coastal zone management and/or restoration projects. Utilization of any and all rights derived under this lease by the mineral lessee, its agents, successors or assigns, shall not interfere with nor hinder the reasonable surface use by the Department of Natural Resources and/or the Louisiana Department of Wildlife and Fisheries, its Offices or Commissions, as hereinabove reserved.

Applicant: The Louisiana Land and Exploration Company

TRACT 34604 - Lafourche and Terrebonne Parishes, Louisiana

All of the lands now or formerly constituting the beds and bottoms of all water bodies of every nature and description and all islands and other lands formed by accretion or reliction, except tax lands, owned by and not under mineral lease from the State of Louisiana on July 10, 2002, situated in Lafourche and Terrebonne Parishes, Louisiana, within the following described boundaries: Beginning at a point having Coordinates of X = 2,226,032.05 and Y = 335,025.65; thence North 02 degrees 50 minutes 29 seconds West 5,280.00 feet to a point having Coordinates of X = 2,225,770.32 and Y = 340,299.16; thence North 88 degrees 00 minutes 00 seconds East 2,640.00 feet to a point having Coordinates of X = 2,228,408.71 and Y = 340,391.29; thence South 02 degrees 50 minutes 29 seconds East 5,280.00 feet to a point having Coordinates of X = 2,228,670.45 and Y = 335,117.79; thence South 88 degrees 00 minutes 00 seconds West 2,640.00 feet to the point of beginning, containing approximately **6 acres**, as shown outlined on a plat on file in the Office of Mineral Resources, Department of Natural Resources, as provided by the applicant. All bearings, distances and coordinates are based on Louisiana Coordinate System of 1927 (South Zone).

NOTE: The above description of the tract nominated for lease has been provided exclusively by the party nominating the tract for lease.

Maps depicting the nominated tract, containing the bearings, distances and coordinates of the nominated tract based on the Louisiana Coordinate System of 1927, North or South Zone, as applicable, are available for public inspection and review at the offices of the Louisiana State Mineral Board from 10:00 a.m. to 3:00 p.m. Monday - Friday.

Any mineral lease selected from the nominated tract and awarded by the Louisiana State Mineral Board shall be without warranty of any kind, either express, implied, or statutory, including, but not limited to, the implied warranties or merchantability and fitness for a particular purpose. Should the mineral lease awarded by the Louisiana State Mineral Board be subsequently modified, cancelled or abrogated due to the existence of conflicting leases, operating agreements, private claims or other existing or future obligations or conditions which may affect all or any portion of the leased tract, it shall not relieve the Lessee of the obligation to pay any bonus due thereon to the Louisiana State Mineral Board, nor shall the Louisiana State Mineral Board be obligated to refund any consideration paid by the Lessee prior to such modification, cancellation, or abrogation, including, but not limited to, bonuses, rents and royalties.

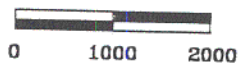
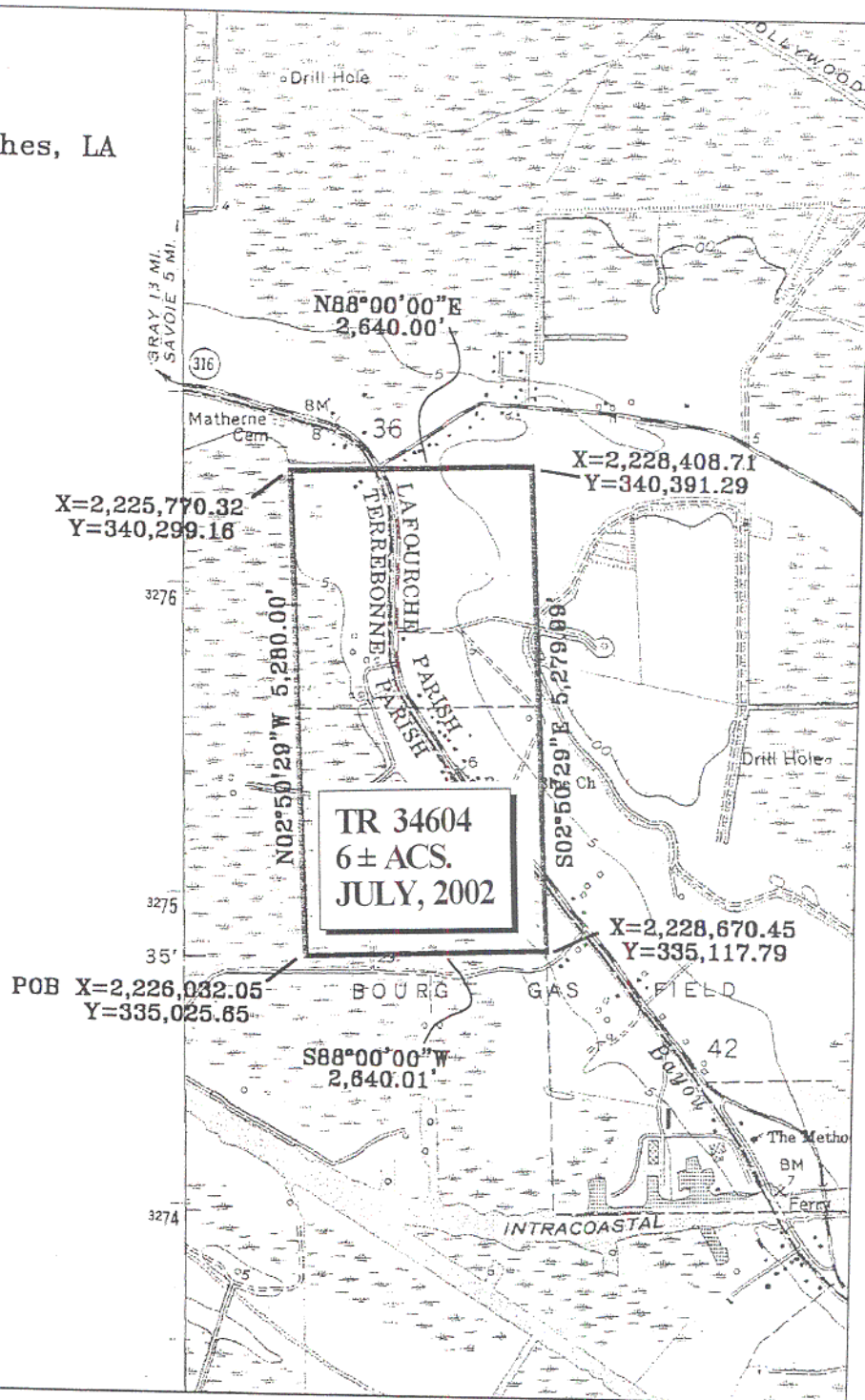
NOTE: The State of Louisiana does hereby reserve, and this lease shall be subject to, the imprescriptible right of surface use in the nature of a servitude in favor of the Department of Natural Resources and/or the

Louisiana Department of Wildlife and Fisheries, including its Offices and Commissions, for the sole purpose of implementing, constructing, servicing and maintaining approved coastal zone management and/or restoration projects. Utilization of any and all rights derived under this lease by the mineral lessee, its agents, successors or assigns, shall not interfere with nor hinder the reasonable surface use by the Department of Natural Resources and/or the Louisiana Department of Wildlife and Fisheries, its Offices or Commissions, as hereinabove reserved.

Applicant: Cypress Energy Corporation

T17S/R18E

Terrebonne & Lafourche Phes, LA



Scale: 1" = 2,000'

TRACT 34605 - Terrebonne Parish, Louisiana

All of the lands now or formerly constituting the beds and bottoms of all water bodies of every nature and description and all islands and other lands formed by accretion or reliction, except tax lands, owned by and not under mineral lease from the State of Louisiana on July 10, 2002, situated in Terrebonne Parish, Louisiana, within the following described boundaries: Beginning at a point having Coordinates of X = 2,214,400.00 and Y = 277,290.00; thence South 14,150.00 feet to a point having Coordinates of X = 2,214,400.00 and Y = 263,140.00; thence West 7,900.00 feet to a point having Coordinates of X = 2,206,500.00 and Y = 263,140.00; thence North 14,150.00 feet to a point having Coordinates of X = 2,206,500.00 and Y = 277,290.00; thence East 7,900.00 feet to the point of beginning, containing approximately **2,242 acres**, as shown outlined on a plat on file in the Office of Mineral Resources, Department of Natural Resources, as provided by the applicant. All bearings, distances and coordinates are based on Louisiana Coordinate System of 1927 (South Zone).

NOTE: The above description of the tract nominated for lease has been provided exclusively by the party nominating the tract for lease.

Maps depicting the nominated tract, containing the bearings, distances and coordinates of the nominated tract based on the Louisiana Coordinate System of 1927, North or South Zone, as applicable, are available for public inspection and review at the offices of the Louisiana State Mineral Board from 10:00 a.m. to 3:00 p.m. Monday - Friday.

Any mineral lease selected from the nominated tract and awarded by the Louisiana State Mineral Board shall be without warranty of any kind, either express, implied, or statutory, including, but not limited to, the implied warranties or merchantability and fitness for a particular purpose. Should the mineral lease awarded by the Louisiana State Mineral Board be subsequently modified, cancelled or abrogated due to the existence of conflicting leases, operating agreements, private claims or other existing or future obligations or conditions which may affect all or any portion of the leased tract, it shall not relieve the Lessee of the obligation to pay any bonus due thereon to the Louisiana State Mineral Board, nor shall the Louisiana State Mineral Board be obligated to refund any consideration paid by the Lessee prior to such modification, cancellation, or abrogation, including, but not limited to, bonuses, rents and royalties.

NOTE: The Department of Wildlife and Fisheries has designated certain areas in the coastal waters of the State of Louisiana as Oyster Seed Bed Areas. The exact location of those Seed Bed Areas must be obtained from Wildlife and Fisheries and any work done under an oil, gas and other liquid or gaseous mineral lease from the State of Louisiana must be

conducted in conformity with the rules and regulations promulgated by the said Department of Wildlife and Fisheries for Oyster Seed Bed Areas.

NOTE: The State of Louisiana does hereby reserve, and this lease shall be subject to, the imprescriptible right of surface use in the nature of a servitude in favor of the Department of Natural Resources and/or the Louisiana Department of Wildlife and Fisheries, including its Offices and Commissions, for the sole purpose of implementing, constructing, servicing and maintaining approved coastal zone management and/or restoration projects. Utilization of any and all rights derived under this lease by the mineral lessee, its agents, successors or assigns, shall not interfere with nor hinder the reasonable surface use by the Department of Natural Resources and/or the Louisiana Department of Wildlife and Fisheries, its Offices or Commissions, as hereinabove reserved.

Applicant: Harold J. Anderson, Inc.

Caillou Ch

of Cem

rand Caillou

Holy Family Cem

ed Caillou Sch

Hog Point

P. O. B.
X=2, 214, 400.00
Y= 277, 290.00

221

T19S - R17E
T19S - R18E

TR 34605
2,242 ± ACS.
JULY, 2002

SL 5351,
As Amended

L
A
K
E

P
O
O
D
R
E
A
U
X

79

80

81

Lake Gero

98

8

NAD 27 LAMBERT LA. SOUTH ZONE



Terrebonne Parish, Louisiana



TRACT 34606 - Terrebonne Parish, Louisiana

All of the lands now or formerly constituting the beds and bottoms of all water bodies of every nature and description and all islands and other lands formed by accretion or reliction, except tax lands, owned by and not under mineral lease from the State of Louisiana on July 10, 2002, situated in Terrebonne Parish, Louisiana, within the following described boundaries: Beginning at a point having Coordinates of X = 2,214,400.00 and Y = 277,290.00; thence East 4,068.96 feet to a point on the Western boundary of State Lease No. 5351, as amended, having Coordinates of X = 2,218,468.96 and Y = 277,290.00; thence along the boundary of said State Lease No. 5351 the following courses: South 21 degrees 37 minutes 43 seconds West 8,326.23 feet, North 84 degrees 00 minutes 13 seconds East 6,384.93 feet, and North 7,073.00 feet to a point having Coordinates of X = 2,221,750.00 and Y = 277,290.00; thence East 3,160.00 feet to a point having Coordinates of X = 2,224,910.00 and Y = 277,290.00; thence South 14,150.00 feet to a point having Coordinates of X = 2,224,910.00 and Y = 263,140.00; thence West 10,510.00 feet to a point having Coordinates of X = 2,214,400.00 and Y = 263,140.00; thence North 14,150.00 feet to the point of beginning, containing approximately **1,711 acres**, as shown outlined on a plat on file in the Office of Mineral Resources, Department of Natural Resources, as provided by the applicant. All bearings, distances and coordinates are based on Louisiana Coordinate System of 1927 (South Zone).

NOTE: The above description of the tract nominated for lease has been provided exclusively by the party nominating the tract for lease.

Maps depicting the nominated tract, containing the bearings, distances and coordinates of the nominated tract based on the Louisiana Coordinate System of 1927, North or South Zone, as applicable, are available for public inspection and review at the offices of the Louisiana State Mineral Board from 10:00 a.m. to 3:00 p.m. Monday - Friday.

Any mineral lease selected from the nominated tract and awarded by the Louisiana State Mineral Board shall be without warranty of any kind, either express, implied, or statutory, including, but not limited to, the implied warranties or merchantability and fitness for a particular purpose. Should the mineral lease awarded by the Louisiana State Mineral Board be subsequently modified, cancelled or abrogated due to the existence of conflicting leases, operating agreements, private claims or other existing or future obligations or conditions which may affect all or any portion of the leased tract, it shall not relieve the Lessee of the obligation to pay any bonus due thereon to the Louisiana State Mineral Board, nor shall the Louisiana State Mineral Board be obligated to refund any consideration paid by the Lessee prior to such modification, cancellation, or abrogation, including, but not limited to, bonuses, rents and royalties.

NOTE: The Department of Wildlife and Fisheries has designated certain areas in the coastal waters of the State of Louisiana as Oyster Seed Bed Areas. The exact location of those Seed Bed Areas must be obtained from Wildlife and Fisheries and any work done under an oil, gas and other liquid or gaseous mineral lease from the State of Louisiana must be conducted in conformity with the rules and regulations promulgated by the said Department of Wildlife and Fisheries for Oyster Seed Bed Areas.

NOTE: The State of Louisiana does hereby reserve, and this lease shall be subject to, the imprescriptible right of surface use in the nature of a servitude in favor of the Department of Natural Resources and/or the Louisiana Department of Wildlife and Fisheries, including its Offices and Commissions, for the sole purpose of implementing, constructing, servicing and maintaining approved coastal zone management and/or restoration projects. Utilization of any and all rights derived under this lease by the mineral lessee, its agents, successors or assigns, shall not interfere with nor hinder the reasonable surface use by the Department of Natural Resources and/or the Louisiana Department of Wildlife and Fisheries, its Offices or Commissions, as hereinabove reserved.

Applicant: Harold J. Anderson, Inc.

R 18 E

P. O. B.
X=2,214,400.00
Y= 277,290.00

SL 5351, As Amended

TR 34606
1,711± ACS.
JULY, 2002

LAKE BOUDREAU
GAS FIELD

LAKE
G.

80

BOUDREAU

93

94

95

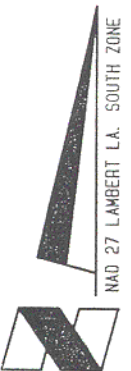
Terrebonne Parish, Louisiana

2000' 0' 2000'

T
19
S

LAKE

BOUDREAU



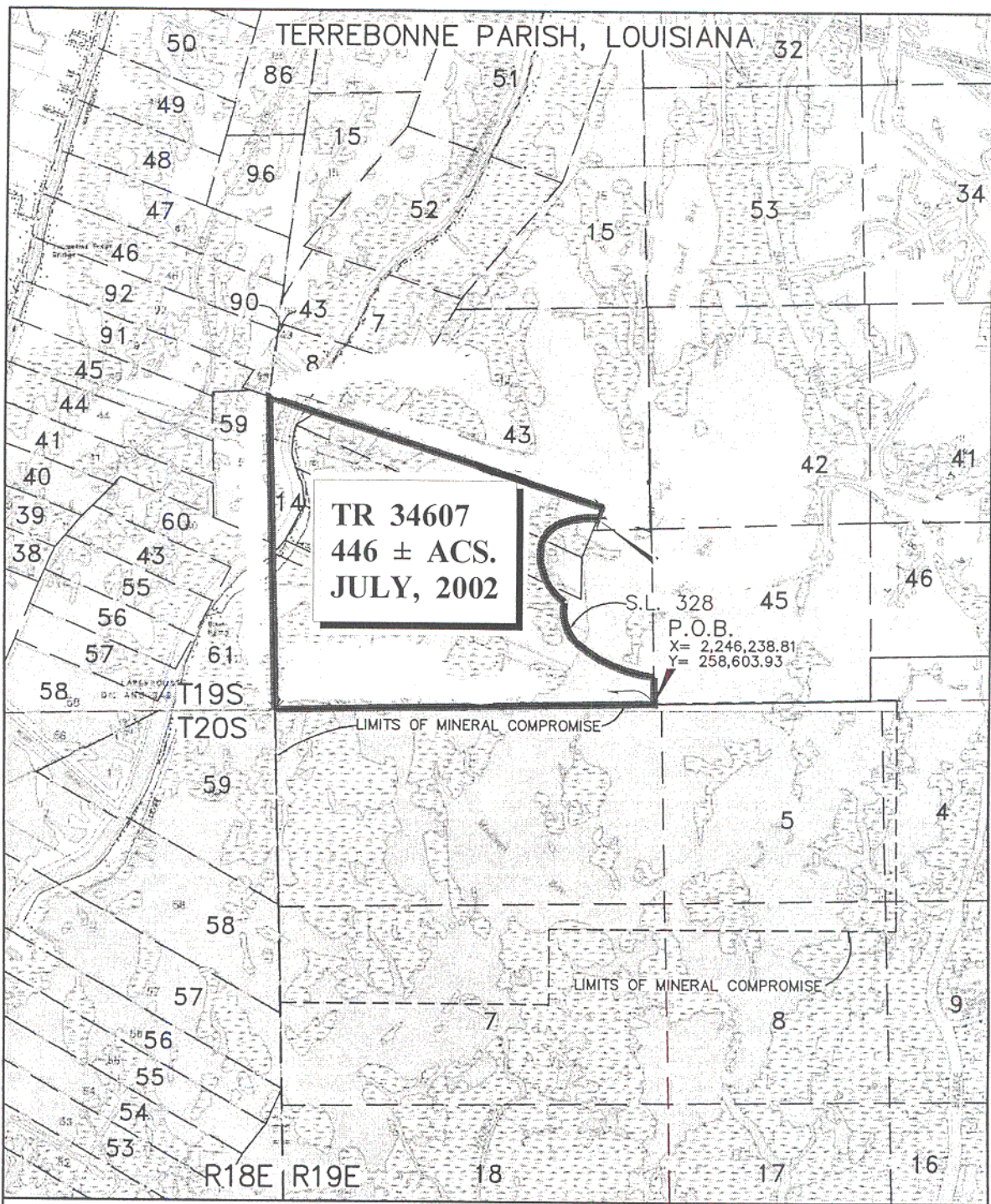
TRACT 34607 - Terrebonne Parish, Louisiana

All of the lands now or formerly constituting the beds and bottoms of all water bodies of every nature and description and all islands and other lands formed by accretion or reliction, except tax lands, owned by and not under mineral lease from the State of Louisiana on July 10, 2002, situated in Terrebonne Parish, Louisiana, within the following described boundaries: Beginning at a point having coordinates of X = 2,246,238.81 and Y = 258,603.93, said point being the Point of Beginning; thence South 88 degrees 51 minutes 35 seconds West a distance of 9,282.53 feet to a point having coordinates of X = 2,236,958.12 and Y = 258,419.21; thence North 01 degrees 12 minutes 00 degrees West a distance of 7,511.44 feet to a point having coordinates of X = 2,236,800.81 and Y = 265,928.99; thence South 72 degrees 14 minutes 12 seconds East a distance of 8,551.32 feet to a point having coordinates of X = 2,244,944.44 and Y = 263,320.10; thence South 21 degrees 53 minutes 49 seconds West approximately 274 feet to a point on the boundary of State Lease No. 328, as amended; thence southerly along said boundary of said State Lease No. 328 to the Point of Beginning, **LESS AND EXCEPT**, if any, that portion of State Lease No. 328, as amended, that may lie within the above described tract, **LESS AND EXCEPT**, if any, that portion of a Compromise Area between the State Mineral Board of Louisiana and FINA Oil And Chemical Company that may lie within the above described tract, containing approximately **446 acres**, as shown outlined on a plat on file in the Office of Mineral Resources, Department of Natural Resources. All bearings, distances and coordinates are based on Louisiana Coordinate System of 1927 (South Zone).

NOTE: The Department of Wildlife and Fisheries has designated certain areas in the coastal waters of the State of Louisiana as Oyster Seed Bed Areas. The exact location of those Seed Bed Areas must be obtained from Wildlife and Fisheries and any work done under an oil, gas and other liquid or gaseous mineral lease from the State of Louisiana must be conducted in conformity with the rules and regulations promulgated by the said Department of Wildlife and Fisheries for Oyster Seed Bed Areas.

NOTE: The State of Louisiana does hereby reserve, and this lease shall be subject to, the imprescriptible right of surface use in the nature of a servitude in favor of the Department of Natural Resources and/or the Louisiana Department of Wildlife and Fisheries, including its Offices and Commissions, for the sole purpose of implementing, constructing, servicing and maintaining approved coastal zone management and/or restoration projects. Utilization of any and all rights derived under this lease by the mineral lessee, its agents, successors or assigns, shall not interfere with nor hinder the reasonable surface use by the Department of Natural Resources and/or the Louisiana Department of Wildlife and Fisheries, its Offices or Commissions, as hereinabove reserved.

Applicant: Petroleum Land Resources, Inc.



LOUISIANA COORDINATE SYSTEM (SOUTH ZONE)
(1927 DATUM)

MAP NOT TO SCALE