

**TRACT 44931 - Tensas Parish, Louisiana**

A certain Tract of land, excluding the beds and bottoms of all navigable waters, belonging to and not presently under mineral lease from Louisiana Department Of Wildlife And Fisheries on June 13, 2018, being more fully described as follows: All of the lands now owned by the Louisiana Department of Wildlife and Fisheries, portion of Buckhorn Wildlife Management Area, lying north of Lake Marydale in Sections 10, 11, 12, 14 and 15, Township 12 North Range 10 East, Tensas Parish, Louisiana, and not presently under mineral lease on March 20, 2018, being more particularly described as follows: Beginning at a point having Coordinates of X = 2,327,737.36 and Y = 502,166.99; thence North 89 degrees 41 minutes 34 seconds East 13,167.10 feet to a point having Coordinates of X = 2,340,904.27 and Y = 502,237.61; thence South 00 degrees 16 minutes 46 seconds East 10,606.45 feet to a point having Coordinates of X = 2,340,956.01 and Y = 491,631.29; thence South 89 degrees 35 minutes 23 seconds West 13,136.46 feet to a point having Coordinates of X = 2,327,819.89 and Y = 491,537.24; thence North 00 degrees 26 minutes 41 seconds West 10,630.07 feet to the point of beginning, containing approximately **869 acres**, all as more particularly outlined on a plat on file in the Office of Mineral Resources, Department of Natural Resources. The description is based on information provided by the State Agency regarding location and ownership of surface and mineral rights. All bearings, distances and coordinates, if applicable, are based on Louisiana Coordinate System of 1927, (North or South Zone).

NOTE: The above description of the Tract nominated for the purpose of acquiring a mineral lease or a geophysical agreement has been provided and corrected, where required, exclusively by the nominating party. Any mineral lease or geophysical agreement selected from this Tract and awarded by the Louisiana State Mineral and Energy Board shall be without warranty of any kind, either express, implied or statutory including, but not limited to, title or the implied warranties of merchantability and fitness for a particular purpose.

An error or omission in the nominating party's Tract description may require that a State mineral lease or geophysical agreement be modified, canceled or abrogated due to the existence of conflicting leases, operating agreements, private claims or other future obligations or conditions within the Tract described. In such case, however, the Louisiana State Mineral and Energy Board shall not be obligated to refund any consideration paid by the Lessee prior to such modification, cancellation or abrogation including, but not limited to, bonuses, rentals and royalties.

NOTE: This tract is located in the Buckhorn Wildlife Management Area under the jurisdiction of the Louisiana Department of Wildlife and Fisheries which has promulgated rules and regulations for the protection of game and wildlife on the aforesaid Tract and, therefore, shall be subject to said rules and regulations, a copy of which may be obtained from the Department

of Wildlife and Fisheries. In addition to the specific rules and regulations applicable, the following shall apply regarding operations under this mineral lease:

1. No activities will be allowed without written authorization from the Louisiana Department of Wildlife and Fisheries.

2. Proposed projects will be evaluated on a case by case basis. Modifications to proposed project features, including, but not limited to, access routes, spoil placement, well sites, flowlines and appurtenant structures may be required by the Department of Wildlife and Fisheries.

3. Compensatory mitigation will be required to offset unavoidable wetland impacts.

4. Removal of all structures, facilities and equipment will be required within 120 days of abandonment unless otherwise agreed to in writing by the Department of Wildlife and Fisheries.

5. No activities will be allowed during the hunting season unless approved by the Department.

6. Compliance with the said WMA regulations will be required unless otherwise specified by the Department.

7. Prior to submitting applications for wetland permits to Federal and State permitting agencies the leaseholder shall coordinate project details with the Department of Wildlife and Fisheries. Contact person for the Department will be Kyle Balkum at (225) 765-2819.

8. Additionally, the Department will require a minimum bonus of \$150.00 per acre and a minimum royalty of 25%.

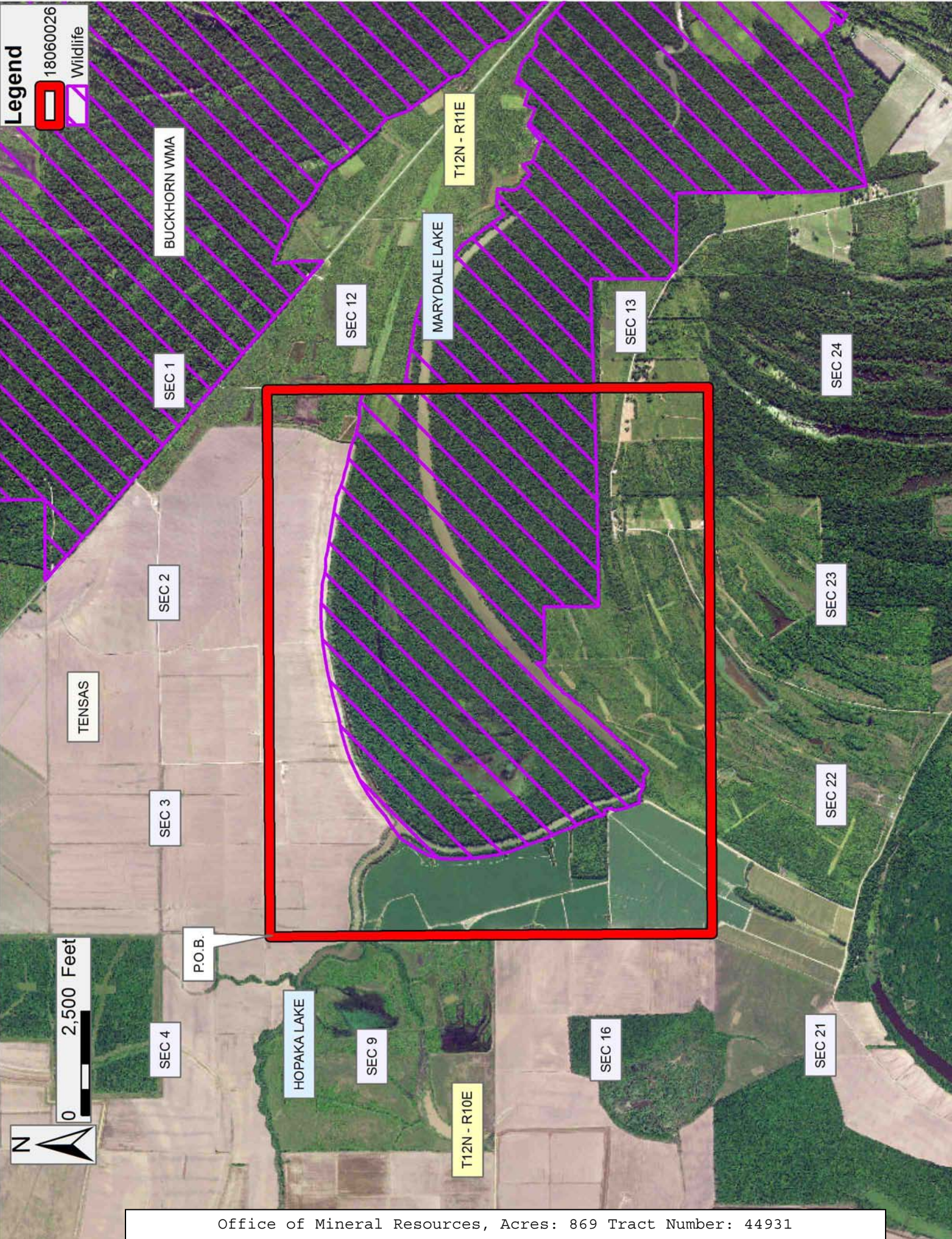
Applicant: SPECTER EXPLORATION, INC. to Agency and by Resolution from the Louisiana Department Of Wildlife And Fisheries authorizing the Mineral Board to act in its behalf

Bidder	Cash Payment	Price/ Acre	Rental	Oil	Gas	Other

**Legend**

18060026

Wildlife



#### **TRACT 44932 - Tensas Parish, Louisiana**

A certain Tract of land, excluding the beds and bottoms of all navigable waters, belonging to and not presently under mineral lease from Louisiana Department Of Wildlife And Fisheries on June 13, 2018, being more fully described as follows: All of the lands now owned by the Louisiana Department of Wildlife and Fisheries, portion of Buckhorn Wildlife Management Area, lying south of Lake Marydale in Sections 11, 12, 13 and 14, and lying north of Lake Marydale in the southeast one quarter, (SE 1/4), of Section 12, Township 12 North Range 10 East, lying south of Lake Marydale in the southwest one quarter, (SW 1/4) of Section 7, an lying south and east of Lake Marydale in Section 18, T12N R11E Tensas Parish, Louisiana, and not presently under mineral lease on March 20, 2018, being more particularly described as follows: Beginning at a point having Coordinates of X = 2,346,292.11 and Y = 491,670.71; thence South 89 degrees 34 minutes 10 seconds West 13,200.00 feet to a point having Coordinates of X = 2,333,092.49 and Y = 491,571.51; thence North 00 degrees 07 minutes 18 seconds West 7,961.81 feet to a point having Coordinates of X = 2,333,075.57 and Y = 499,533.30; thence North 89 degrees 34 minutes 16 seconds East 13,200.00 feet to a point having Coordinates of X = 2,346,275.20 and Y = 499,632.11; thence South 00 degrees 07 minutes 18 seconds East 7,961.42 feet to the point of beginning, containing approximately **987 acres**, all as more particularly outlined on a plat on file in the Office of Mineral Resources, Department of Natural Resources. The description is based on information provided by the State Agency regarding location and ownership of surface and mineral rights. All bearings, distances and coordinates, if applicable, are based on Louisiana Coordinate System of 1927, (North or South Zone).

NOTE: The above description of the Tract nominated for the purpose of acquiring a mineral lease or a geophysical agreement has been provided and corrected, where required, exclusively by the nominating party. Any mineral lease or geophysical agreement selected from this Tract and awarded by the Louisiana State Mineral and Energy Board shall be without warranty of any kind, either express, implied or statutory including, but not limited to, title or the implied warranties of merchantability and fitness for a particular purpose.

An error or omission in the nominating party's Tract description may require that a State mineral lease or geophysical agreement be modified, canceled or abrogated due to the existence of conflicting leases, operating agreements, private claims or other future obligations or conditions within the Tract described. In such case, however, the Louisiana State Mineral and Energy Board shall not be obligated to refund any consideration paid by the Lessee prior to such modification, cancellation or abrogation including, but not limited to, bonuses, rentals and royalties.

NOTE: This tract is located in the Buckhorn Wildlife Management Area under the jurisdiction of the Louisiana Department of Wildlife and Fisheries

which has promulgated rules and regulations for the protection of game and wildlife on the aforesaid Tract and, therefore, shall be subject to said rules and regulations, a copy of which may be obtained from the Department of Wildlife and Fisheries. In addition to the specific rules and regulations applicable, the following shall apply regarding operations under this mineral lease:

1. No activities will be allowed without written authorization from the Louisiana Department of Wildlife and Fisheries.

2. Proposed projects will be evaluated on a case by case basis. Modifications to proposed project features, including, but not limited to, access routes, spoil placement, well sites, flowlines and appurtenant structures may be required by the Department of Wildlife and Fisheries.

3. Compensatory mitigation will be required to offset unavoidable wetland impacts.

4. Removal of all structures, facilities and equipment will be required within 120 days of abandonment unless otherwise agreed to in writing by the Department of Wildlife and Fisheries.

5. No activities will be allowed during the hunting season unless approved by the Department.

6. Compliance with the said WMA regulations will be required unless otherwise specified by the Department.

7. Prior to submitting applications for wetland permits to Federal and State permitting agencies the leaseholder shall coordinate project details with the Department of Wildlife and Fisheries. Contact person for the Department will be Kyle Balkum at (225) 765-2819.

8. Additionally, the Department will require a minimum bonus of \$150.00 per acre and a minimum royalty of 25%.

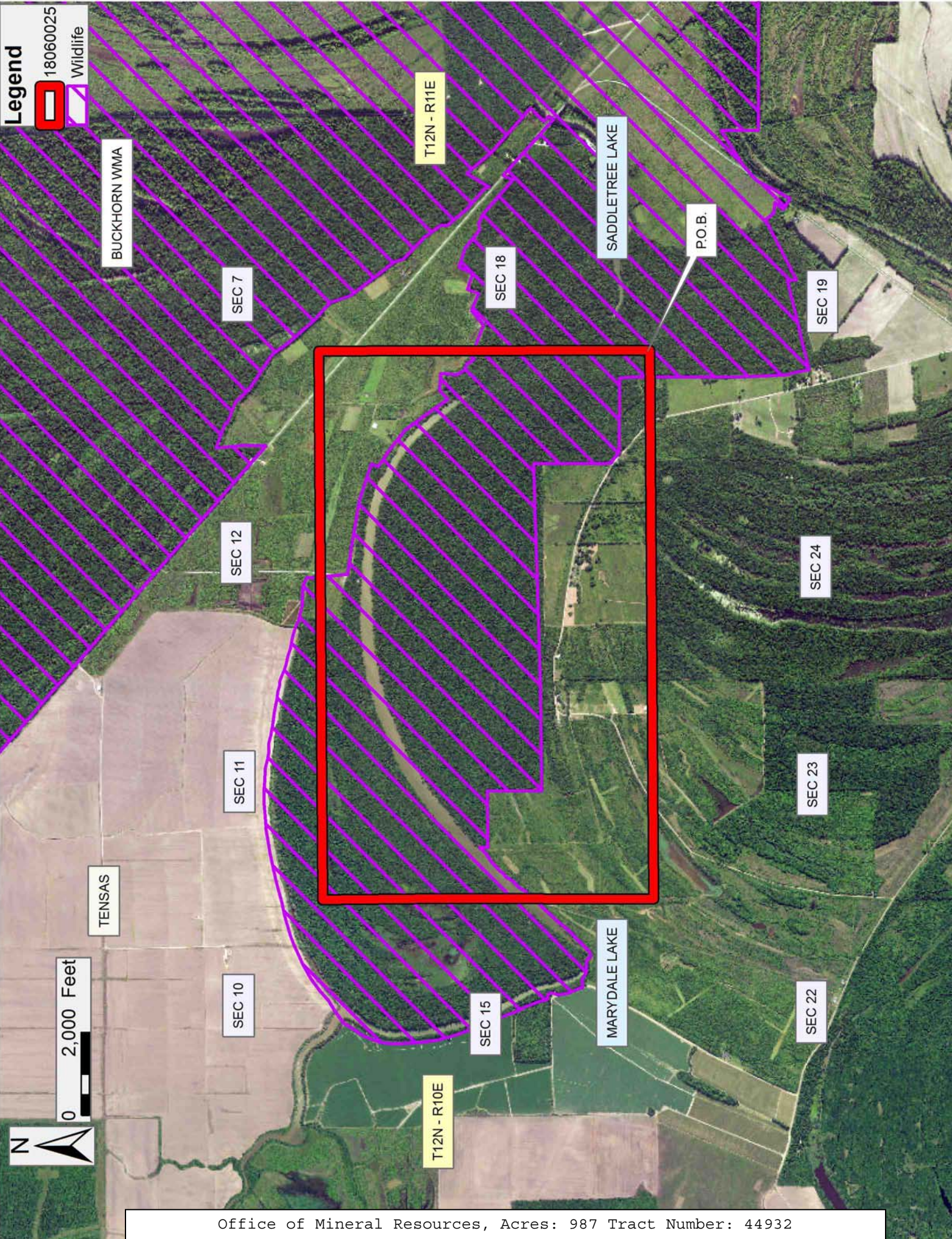
Applicant: SPECTER EXPLORATION, INC. to Agency and by Resolution from the Louisiana Department Of Wildlife And Fisheries authorizing the Mineral Board to act in its behalf

Bidder	Cash Payment	Price/ Acre	Rental	Oil	Gas	Other

**Legend**

18060025

Wildlife



**TRACT 44933 - Calcasieu Parish, Louisiana**

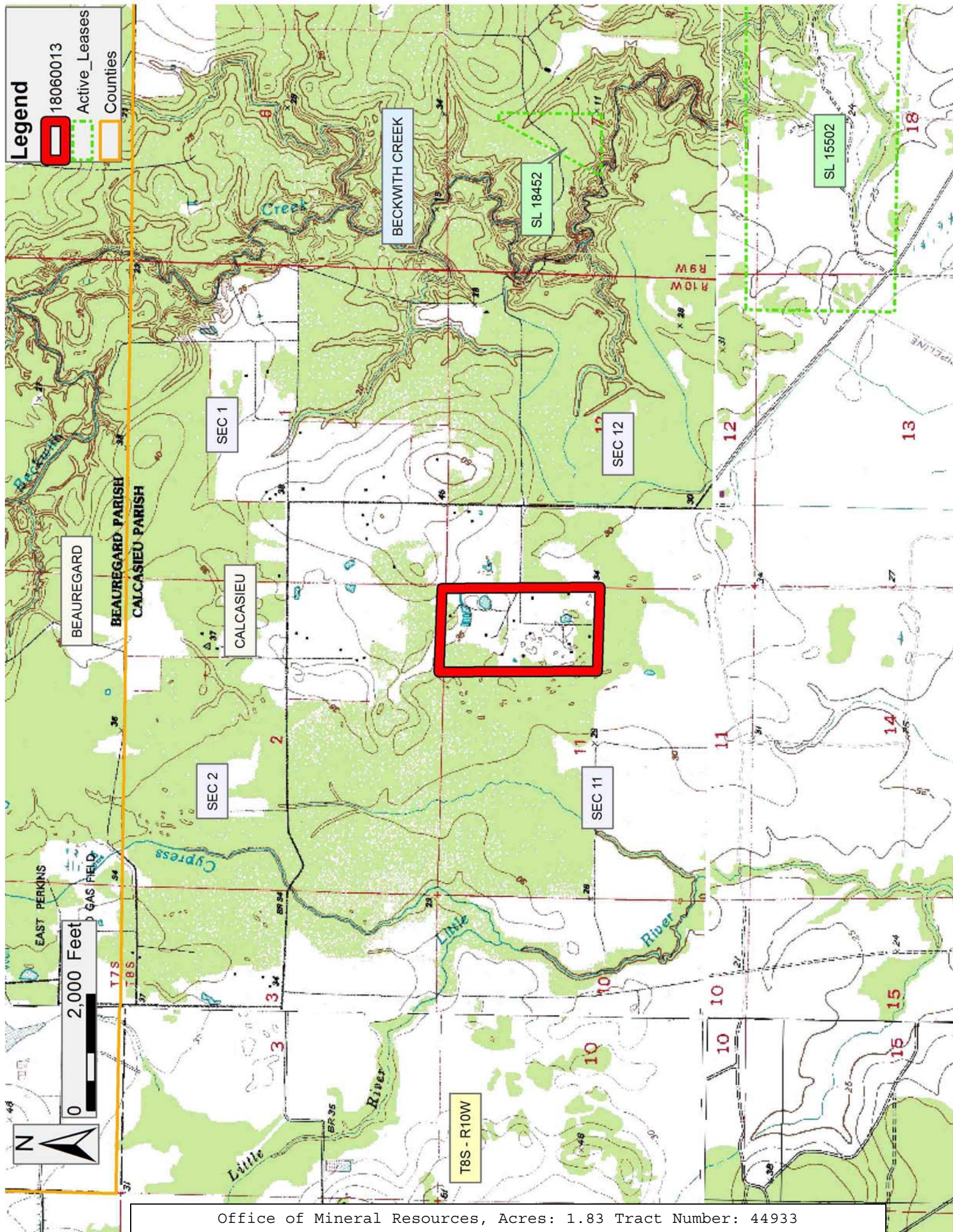
A certain Tract of land, excluding the beds and bottoms of all navigable waters, belonging to and not presently under mineral lease from Calcasieu Parish Police Jury on June 13, 2018, being more fully described as follows: The East Half of the Northeast Quarter (E/2 of the NE/4) of Section 11, Township 8 South, Range 10 West, Calcasieu Parish, Louisiana, containing approximately **1.83 acres**, all as more particularly outlined on a plat on file in the Office of Mineral Resources, Department of Natural Resources. The description is based on information provided by the State Agency regarding location and ownership of surface and mineral rights. All bearings, distances and coordinates, if applicable, are based on Louisiana Coordinate System of 1927, (North or South Zone).

NOTE: The above description of the Tract nominated for the purpose of acquiring a mineral lease or a geophysical agreement has been provided and corrected, where required, exclusively by the nominating party. Any mineral lease or geophysical agreement selected from this Tract and awarded by the Louisiana State Mineral and Energy Board shall be without warranty of any kind, either express, implied or statutory including, but not limited to, title or the implied warranties of merchantability and fitness for a particular purpose.

An error or omission in the nominating party's Tract description may require that a State mineral lease or geophysical agreement be modified, canceled or abrogated due to the existence of conflicting leases, operating agreements, private claims or other future obligations or conditions within the Tract described. In such case, however, the Louisiana State Mineral and Energy Board shall not be obligated to refund any consideration paid by the Lessee prior to such modification, cancellation or abrogation including, but not limited to, bonuses, rentals and royalties.

Applicant: THEOPHILUS OIL, GAS & LAND SERVICES, LLC to Agency and by Resolution from the Calcasieu Parish Police Jury authorizing the Mineral Board to act in its behalf

Bidder	Cash Payment	Price/Acre	Rental	Oil	Gas	Other



**TRACT 44934 - Plaquemines Parish, Louisiana**

A certain Tract of land, excluding the beds and bottoms of all navigable waters, belonging to and not presently under mineral lease from Orleans Levee District on June 13, 2018, being more fully described as follows: TOWNSHIP 18 SOUTH RANGE 16 EAST SECTION 36: All, containing 182 acres, more or less; TOWNSHIP 18 SOUTH RANGE 17 EAST SECTION 31: All, containing 18 acres, more or less; TOWNSHIP 19 SOUTH RANGE 16 EAST SECTION 1: Northwest Quarter (NW/4), containing 67 acres, more or less. The above described lands contain approximately **267 acres**, all as more particularly outlined on a plat on file in the Office of Mineral Resources, Department of Natural Resources. The description is based on information provided by the State Agency regarding location and ownership of surface and mineral rights. All bearings, distances and coordinates, if applicable, are based on Louisiana Coordinate System of 1927, (North or South Zone).

NOTE: The above description of the Tract nominated for the purpose of acquiring a mineral lease or a geophysical agreement has been provided and corrected, where required, exclusively by the nominating party. Any mineral lease or geophysical agreement selected from this Tract and awarded by the Louisiana State Mineral and Energy Board shall be without warranty of any kind, either express, implied or statutory including, but not limited to, title or the implied warranties of merchantability and fitness for a particular purpose.

An error or omission in the nominating party's Tract description may require that a State mineral lease or geophysical agreement be modified, canceled or abrogated due to the existence of conflicting leases, operating agreements, private claims or other future obligations or conditions within the Tract described. In such case, however, the Louisiana State Mineral and Energy Board shall not be obligated to refund any consideration paid by the Lessee prior to such modification, cancellation or abrogation including, but not limited to, bonuses, rentals and royalties.

Applicant: ROBERT A. SCHOEDER, INC. to Agency and by Resolution from the Orleans Levee District authorizing the Mineral Board to act in its behalf

Bidder	Cash Payment	Price/ Acre	Rental	Oil	Gas	Other

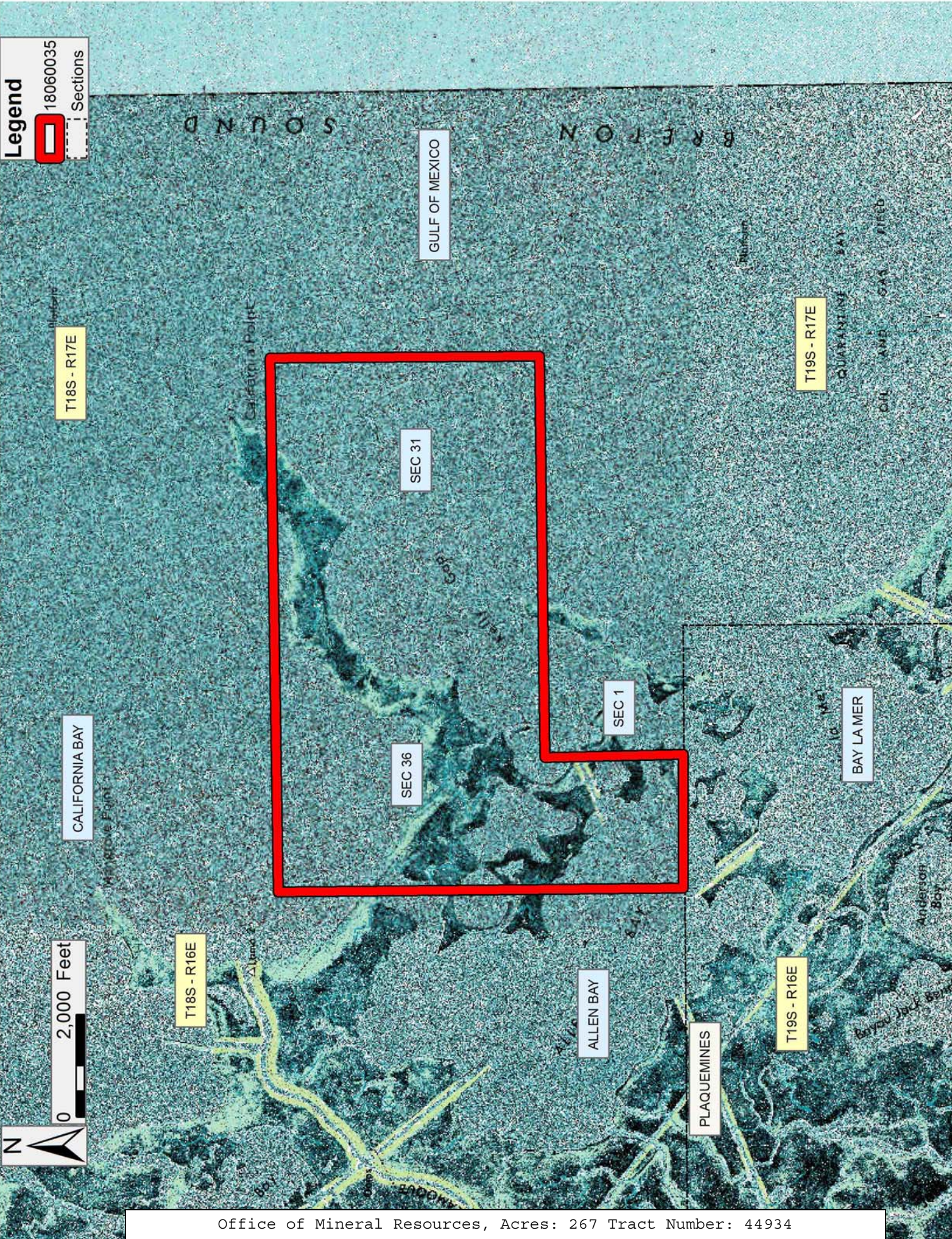


0 2,000 Feet

**Legend**

18060035

Sections



**TRACT 44935 - Plaquemines Parish, Louisiana**

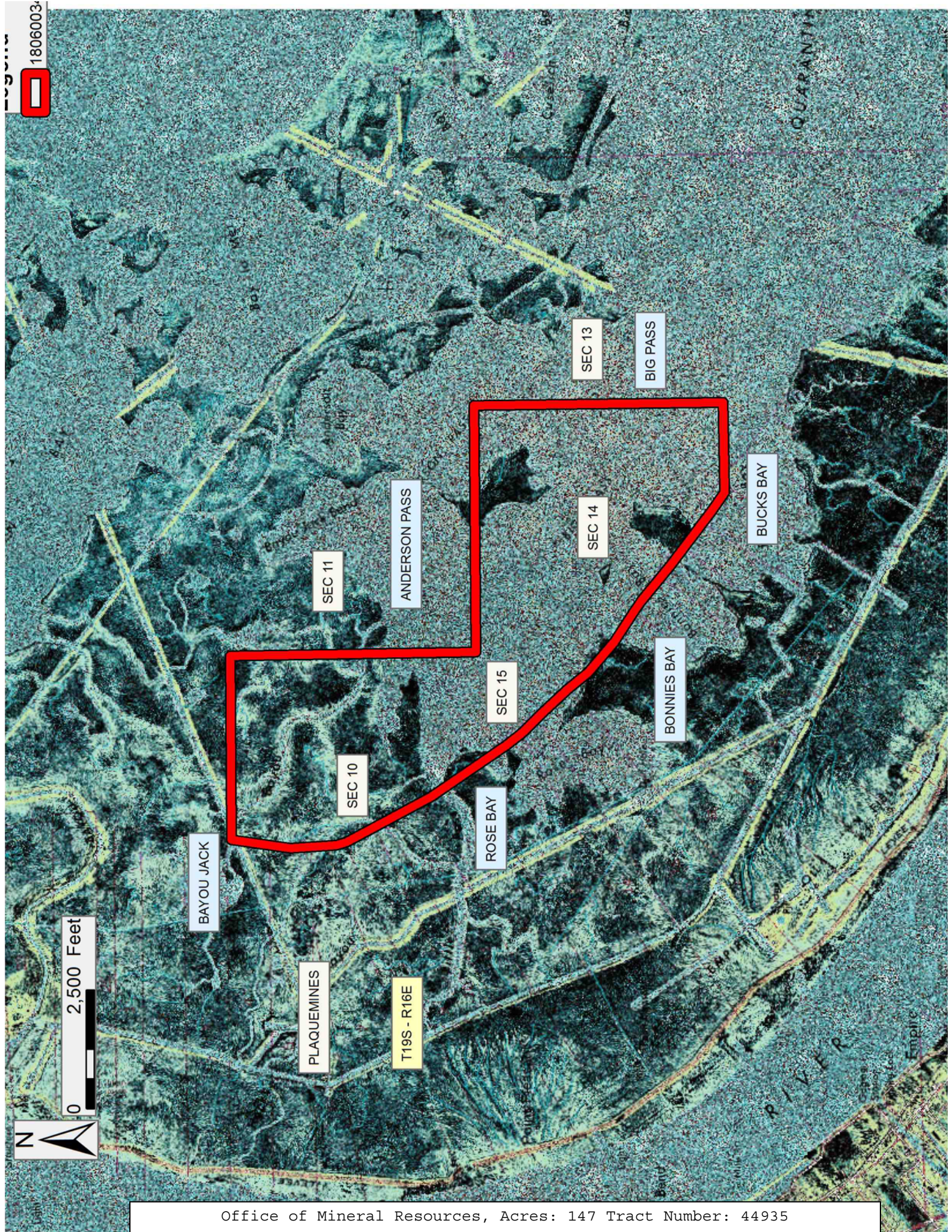
A certain Tract of land, excluding the beds and bottoms of all navigable waters, belonging to and not presently under mineral lease from Orleans Levee District on June 13, 2018, being more fully described as follows: TOWNSHIP 19 SOUTH RANGE 16 EAST SECTION 10: All, except 74 acres in the Northeast Quarter (NE/4), containing 131 acres, more or less; SECTION 14: All, except 5.00 acres in the Northeast Quarter (NE/4), containing 14 acres, more or less; SECTION 15: All, containing 2 acres, more or less. The above described lands contain approximately **147 acres**, all as more particularly outlined on a plat on file in the Office of Mineral Resources, Department of Natural Resources. The description is based on information provided by the State Agency regarding location and ownership of surface and mineral rights. All bearings, distances and coordinates, if applicable, are based on Louisiana Coordinate System of 1927, (North or South Zone).

NOTE: The above description of the Tract nominated for the purpose of acquiring a mineral lease or a geophysical agreement has been provided and corrected, where required, exclusively by the nominating party. Any mineral lease or geophysical agreement selected from this Tract and awarded by the Louisiana State Mineral and Energy Board shall be without warranty of any kind, either express, implied or statutory including, but not limited to, title or the implied warranties of merchantability and fitness for a particular purpose.

An error or omission in the nominating party's Tract description may require that a State mineral lease or geophysical agreement be modified, canceled or abrogated due to the existence of conflicting leases, operating agreements, private claims or other future obligations or conditions within the Tract described. In such case, however, the Louisiana State Mineral and Energy Board shall not be obligated to refund any consideration paid by the Lessee prior to such modification, cancellation or abrogation including, but not limited to, bonuses, rentals and royalties.

Applicant: ROBERT A. SCHOEDER, INC. to Agency and by Resolution from the Orleans Levee District authorizing the Mineral Board to act in its behalf

Bidder	Cash Payment	Price/ Acre	Rental	Oil	Gas	Other



**TRACT 44936 - Plaquemines Parish, Louisiana**

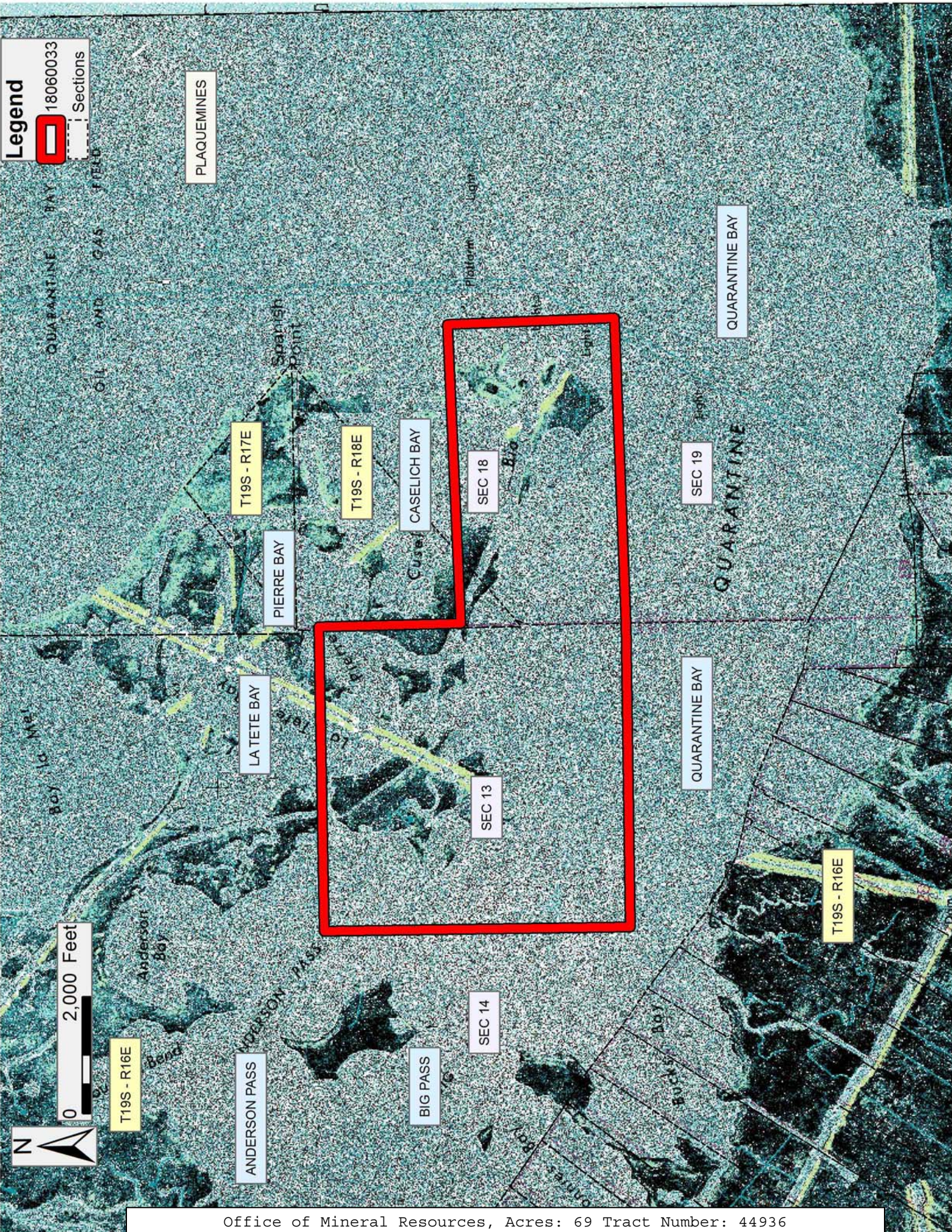
A certain Tract of land, excluding the beds and bottoms of all navigable waters, belonging to and not presently under mineral lease from Orleans Levee District on June 13, 2018, being more fully described as follows: TOWNSHIP 19 SOUTH RANGE 16 EAST SECTION 13: All, except 2.50 acres in the Northeast Quarter (NE/4), containing 40 acres, more or less; TOWNSHIP 19 SOUTH RANGE 17 EAST SECTION 18: South Half (S/2); containing 29 acres, more or less; The above described lands contain approximately **69 acres**, all as more particularly outlined on a plat on file in the Office of Mineral Resources, Department of Natural Resources. The description is based on information provided by the State Agency regarding location and ownership of surface and mineral rights. All bearings, distances and coordinates, if applicable, are based on Louisiana Coordinate System of 1927, (North or South Zone).

NOTE: The above description of the Tract nominated for the purpose of acquiring a mineral lease or a geophysical agreement has been provided and corrected, where required, exclusively by the nominating party. Any mineral lease or geophysical agreement selected from this Tract and awarded by the Louisiana State Mineral and Energy Board shall be without warranty of any kind, either express, implied or statutory including, but not limited to, title or the implied warranties of merchantability and fitness for a particular purpose.

An error or omission in the nominating party's Tract description may require that a State mineral lease or geophysical agreement be modified, canceled or abrogated due to the existence of conflicting leases, operating agreements, private claims or other future obligations or conditions within the Tract described. In such case, however, the Louisiana State Mineral and Energy Board shall not be obligated to refund any consideration paid by the Lessee prior to such modification, cancellation or abrogation including, but not limited to, bonuses, rentals and royalties.

Applicant: ROBERT A. SCHOEDER, INC. to Agency and by Resolution from the Orleans Levee District authorizing the Mineral Board to act in its behalf

Bidder	Cash Payment	Price/ Acre	Rental	Oil	Gas	Other



**Legend**

18060033  
Sections

PLAQUEMINES

QUARANTINE BAY

SEC 19

QUARANTINE BAY

T19S - R16E

SEC 14

BIG PASS

ANDERSON PASS

T19S - R16E

SEC 13

CASELICH BAY

T19S - R18E

PIERRE BAY

T19S - R17E

LA TETE BAY

0 2,000 Feet

