

TRACT 44909 - Avoyelles and Rapides Parishes, Louisiana

All of the lands now or formerly constituting the beds and bottoms of all water bodies of every nature and description as to which title is vested in the State of Louisiana, together with all islands arising therein and other lands formed by accretion or by reliction, where allowed by law, excepting tax adjudicated lands, and not presently under mineral lease on June 13, 2018, situated in Avoyelles and Rapides Parishes, Louisiana, and more particularly described as follows: Beginning at a point having a Coordinate of X = 1,711,100.00 and Y = 857,945.62; thence East 18,400.00 feet to a point having Coordinate of X = 1,729,500.00 and Y = 857,945.62; thence South 18,400.00 feet to a point having a Coordinate of X = 1,729,500.00 and Y = 839,545.62; thence West 18,400.00 feet to a point having Coordinates of X = 1,711,100.00 and Y = 839,545.62; thence North 18,400.00 feet to the point of beginning, **LESS AND EXCEPT** any right, title, and interest in lands owned by and not under lease from the State of Louisiana, on behalf of the Avoyelles and Rapides Parish School Boards, situated in Section 16, Township 1 South, Range 2 East, Avoyelles and Rapides Parishes, Louisiana, contained within the above described tract, containing approximately **80 acres**, all as more particularly outlined on a plat on file in the Office of Mineral Resources, Department of Natural Resources. All bearings, distances and coordinates are based on Louisiana Coordinate System of 1927, (North or South Zone), where applicable.

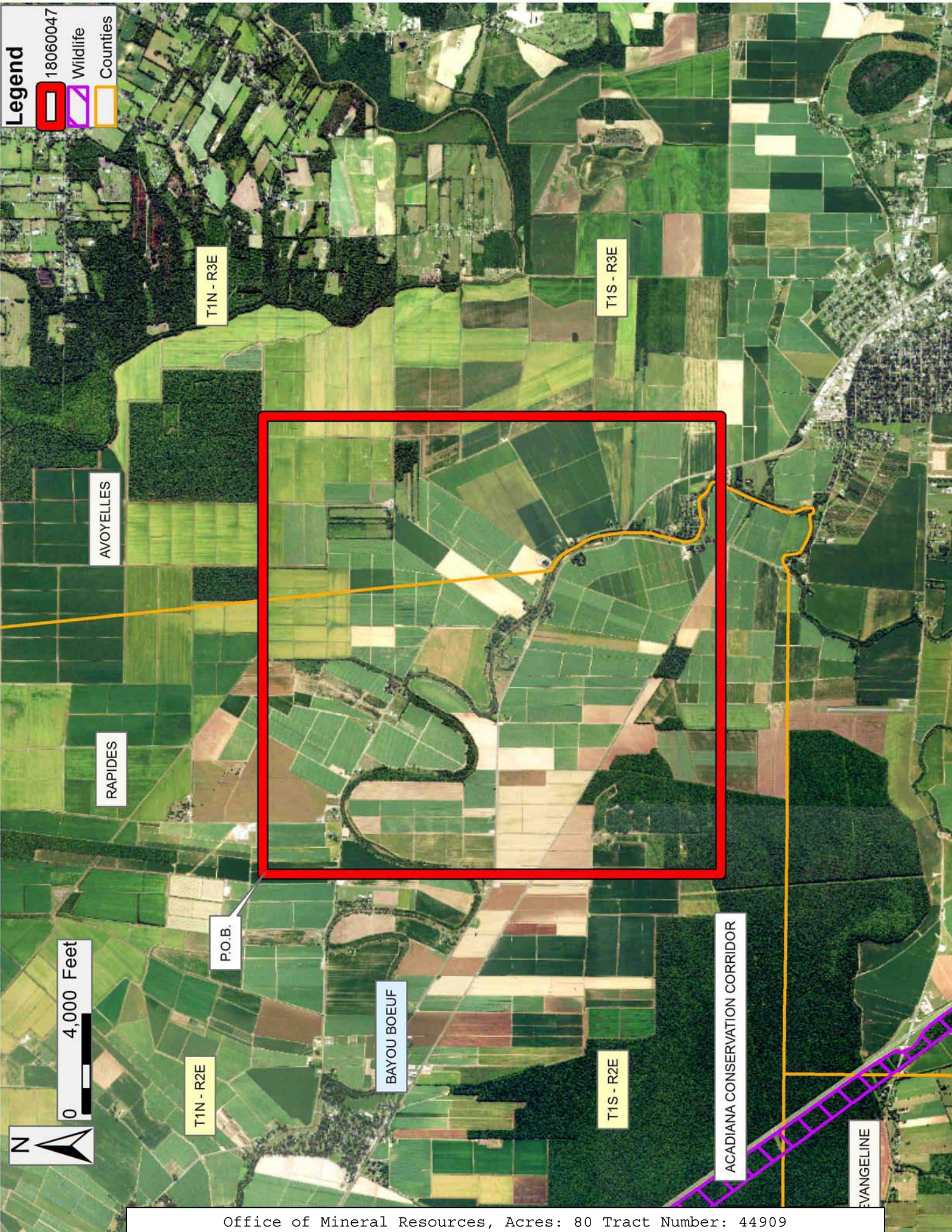
NOTE: The above description of the Tract nominated for the purpose of acquiring a mineral lease or a geophysical agreement has been provided and corrected, where required, exclusively by the nominating party. Any mineral lease or geophysical agreement selected from this Tract and awarded by the Louisiana State Mineral and Energy Board shall be without warranty of any kind, either express, implied or statutory including, but not limited to, title or the implied warranties of merchantability and fitness for a particular purpose.

An error or omission in the nominating party's Tract description may require that a State mineral lease or geophysical agreement be modified, canceled or abrogated due to the existence of conflicting leases, operating agreements, private claims or other future obligations or conditions within the Tract described. In such case, however, the Louisiana State Mineral and Energy Board shall not be obligated to refund any consideration paid by the Lessee prior to such modification, cancellation or abrogation including, but not limited to, bonuses, rentals and royalties.

NOTE: The Office of Mineral Resources will require a minimum bonus of \$500 per acre and a minimum royalty of 25%.

Bidder	Cash Payment	Price/ Acre	Rental	Oil	Gas	Other

Applicant: MURRAY PRESLEY



TRACT 44910 - Evangeline and Rapides Parishes, Louisiana

All of the lands now or formerly constituting the beds and bottoms of all water bodies of every nature and description as to which title is vested in the State of Louisiana, together with all islands arising therein and other lands formed by accretion or by reliction, where allowed by law, excepting tax adjudicated lands, and not presently under mineral lease on June 13, 2018, situated in Evangeline and Rapides Parishes, Louisiana, and more particularly described as follows: Beginning at a point having Coordinates of X = 1,655,725.46 and Y = 856,282.99; thence East 18,480.00 feet to a point having Coordinates of X = 1,674,125.46 and Y = 856,282.99; thence Southerly approximately 5,920 feet to a point being the Northwest corner of State Lease No. 15000, as amended; thence Southerly approximately 8,152 feet along the boundary of said State Lease No. 15000 to a point being its Southwest corner; thence Southerly approximately 4,322 feet to a point having Coordinates of X = 1,674,125.46 and Y = 837,882.99; thence West 18,400 feet to a point having Coordinates of X = 1,655,725.46 and Y = 837,882.99; thence North 18,400 feet to the point of beginning, **LESS AND EXCEPT** any right, title, and interest in lands owned by and not under lease from the State of Louisiana, on behalf of the Evangeline and Rapides Parish School Boards, situated in Section 16, Township 1 South, Range 1 East, Evangeline and Rapides Parishes, Louisiana, contained within the above described tract, containing approximately **55 acres**, all as more particularly outlined on a plat on file in the Office of Mineral Resources, Department of Natural Resources. All bearings, distances and coordinates are based on Louisiana Coordinate System of 1927, (North or South Zone), where applicable.

NOTE: The above description of the Tract nominated for the purpose of acquiring a mineral lease or a geophysical agreement has been provided and corrected, where required, exclusively by the nominating party. Any mineral lease or geophysical agreement selected from this Tract and awarded by the Louisiana State Mineral and Energy Board shall be without warranty of any kind, either express, implied or statutory including, but not limited to, title or the implied warranties of merchantability and fitness for a particular purpose.

An error or omission in the nominating party's Tract description may require that a State mineral lease or geophysical agreement be modified, canceled or abrogated due to the existence of conflicting leases, operating agreements, private claims or other future obligations or conditions within the Tract described. In such case, however, the Louisiana State Mineral and Energy Board shall not be obligated to refund any consideration paid by the Lessee prior to such modification, cancellation or abrogation including, but not limited to, bonuses, rentals and royalties.

NOTE: The Office of Mineral Resources will require a minimum bonus of \$500 per acre and a minimum royalty of 25%.

NOTE: A portion of this tract is located on or adjacent to a Louisiana designated Natural and Scenic River. The applicant must obtain authorization from the Louisiana Department of Wildlife and Fisheries, Scenic Rivers Program prior to initiating any activities within or adjacent to the river, including, but not limited to, crossings by roads and pipelines, well sites, production facilities and water withdrawals.

Applicant: MURRAY PRESELY

Bidder	Cash Payment	Price/ Acre	Rental	Oil	Gas	Other

TRACT 44911 - Avoyelles Parish, Louisiana

All of the lands now or formerly constituting the beds and bottoms of all water bodies of every nature and description as to which title is vested in the State of Louisiana, together with all islands arising therein and other lands formed by accretion or by reliction, where allowed by law, excepting tax adjudicated lands, and not presently under mineral lease on June 13, 2018, situated in Avoyelles Parish, Louisiana, and more particularly described as follows: Beginning at a point having a Coordinate of X = 1,747,796.43 and Y = 854,655.61; thence East 15,195.73 feet to a point having Coordinate of X = 1,762,992.16 and Y = 854,655.61; thence South 18,400.00 feet to the Northeast corner of State Lease No. 21730 having a Coordinate of X = 1,762,992.16 and Y = 836,255.61; thence West 15,195.73 along the Northern boundary of State Lease No. 21730 to a point having Coordinates of X = 1,747,796.43 and Y = 836,255.61; thence North 18,400.00 feet to the point of beginning, containing approximately **97 acres**, all as more particularly outlined on a plat on file in the Office of Mineral Resources, Department of Natural Resources. All bearings, distances and coordinates are based on Louisiana Coordinate System of 1927, (North or South Zone), where applicable.

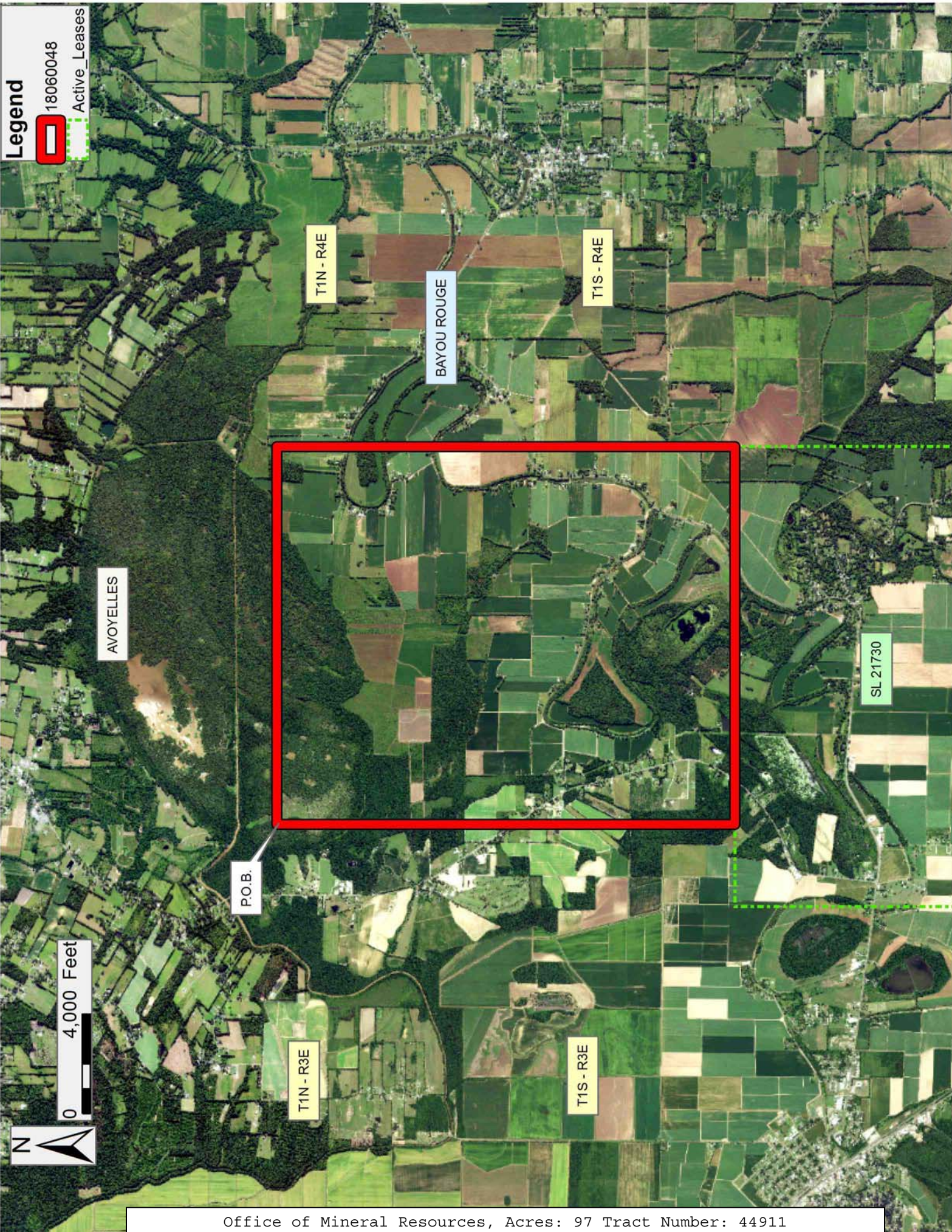
NOTE: The above description of the Tract nominated for the purpose of acquiring a mineral lease or a geophysical agreement has been provided and corrected, where required, exclusively by the nominating party. Any mineral lease or geophysical agreement selected from this Tract and awarded by the Louisiana State Mineral and Energy Board shall be without warranty of any kind, either express, implied or statutory including, but not limited to, title or the implied warranties of merchantability and fitness for a particular purpose.

An error or omission in the nominating party's Tract description may require that a State mineral lease or geophysical agreement be modified, canceled or abrogated due to the existence of conflicting leases, operating agreements, private claims or other future obligations or conditions within the Tract described. In such case, however, the Louisiana State Mineral and Energy Board shall not be obligated to refund any consideration paid by the Lessee prior to such modification, cancellation or abrogation including, but not limited to, bonuses, rentals and royalties.

NOTE: The Office of Mineral Resources will require a minimum bonus of \$500 per acre and a minimum royalty of 25%.

Applicant: MURRAY PRESLEY

Bidder	Cash Payment	Price/ Acre	Rental	Oil	Gas	Other



Legend

18060048

Active Leases

0 4,000 Feet

N

TRACT 44912 - Evangeline and Rapides Parishes, Louisiana

All of the lands now or formerly constituting the beds and bottoms of all water bodies of every nature and description as to which title is vested in the State of Louisiana, together with all islands arising therein and other lands formed by accretion or by reliction, where allowed by law, excepting tax adjudicated lands, and not presently under mineral lease on June 13, 2018, situated in Evangeline and Rapides Parishes, Louisiana, and more particularly described as follows: Beginning at a point having Coordinates of X = 1,637,245.46 and Y = 851,054.49; thence East 18,480.00 feet to a point having Coordinates of X = 1,655,725.46 and Y = 851,054.49; thence South 18,480.00 feet to a point having Coordinates of X = 1,655,725.46 and Y = 832,574.49; thence West 18,480.00 feet to a point having Coordinates of X = 1,637,245.46 and Y = 832,574.49; thence North 18,480.00 feet to the point of beginning, **LESS AND EXCEPT** any right, title, and interest in lands owned by and not under lease from the State of Louisiana, on behalf of the Evangeline and Rapides Parish School Boards, situated in Section 16, Township 1 South, Range 1 West, Evangeline and Rapides Parishes, Louisiana, contained within the above described tract, containing approximately **74 acres**, all as more particularly outlined on a plat on file in the Office of Mineral Resources, Department of Natural Resources. All bearings, distances and coordinates are based on Louisiana Coordinate System of 1927, (North or South Zone), where applicable.

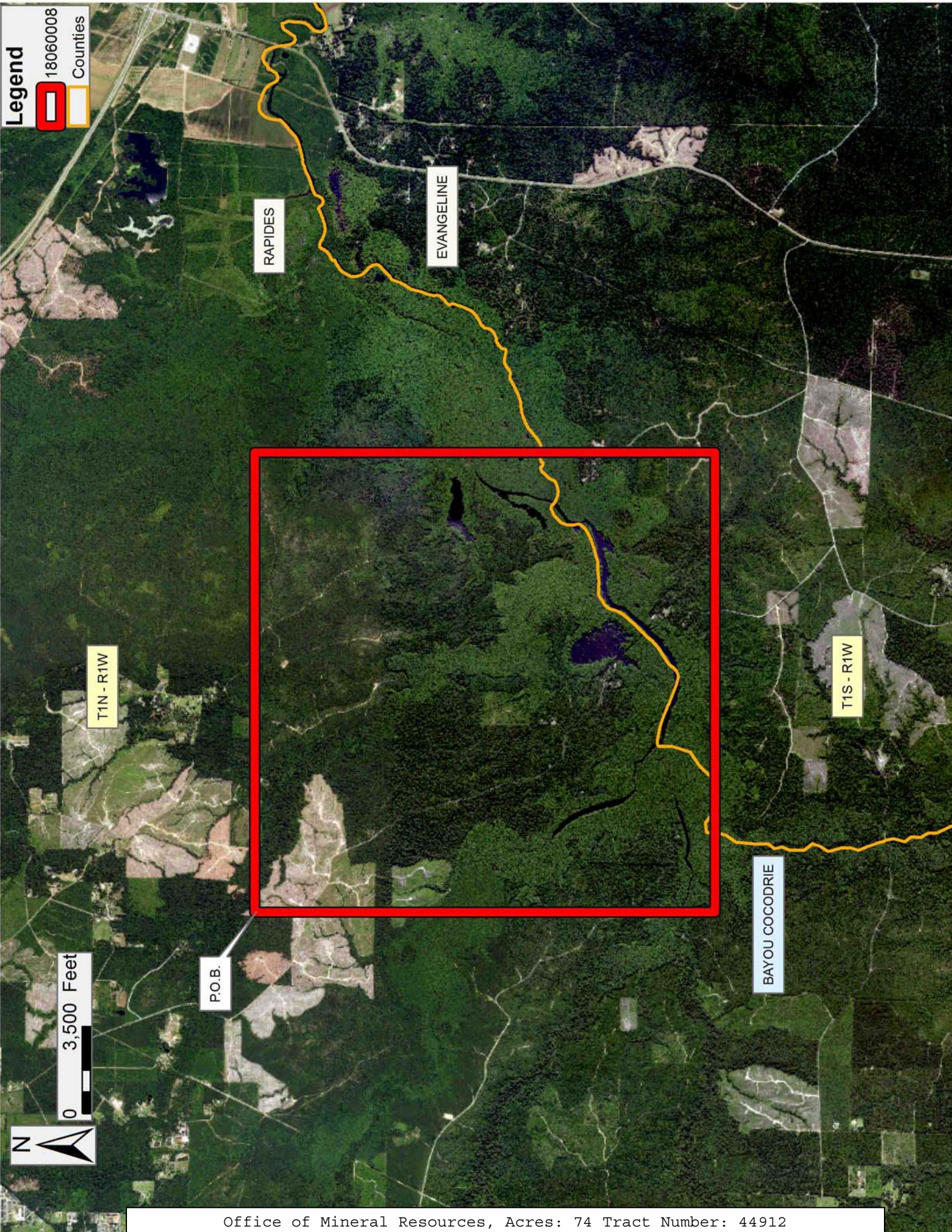
NOTE: The above description of the Tract nominated for the purpose of acquiring a mineral lease or a geophysical agreement has been provided and corrected, where required, exclusively by the nominating party. Any mineral lease or geophysical agreement selected from this Tract and awarded by the Louisiana State Mineral and Energy Board shall be without warranty of any kind, either express, implied or statutory including, but not limited to, title or the implied warranties of merchantability and fitness for a particular purpose.

An error or omission in the nominating party's Tract description may require that a State mineral lease or geophysical agreement be modified, canceled or abrogated due to the existence of conflicting leases, operating agreements, private claims or other future obligations or conditions within the Tract described. In such case, however, the Louisiana State Mineral and Energy Board shall not be obligated to refund any consideration paid by the Lessee prior to such modification, cancellation or abrogation including, but not limited to, bonuses, rentals and royalties.

NOTE: The Office of Mineral Resources will require a minimum bonus of \$500 per acre and a minimum royalty of 25%.

Applicant: MURRAY PRESELY

Bidder	Cash Payment	Price/ Acre	Rental	Oil	Gas	Other



TRACT 44913 - Avoyelles and Rapides Parishes, Louisiana

All of the lands now or formerly constituting the beds and bottoms of all water bodies of every nature and description as to which title is vested in the State of Louisiana, together with all islands arising therein and other lands formed by accretion or by reliction, where allowed by law, excepting tax adjudicated lands, and not presently under mineral lease on June 13, 2018, situated in Avoyelles and Rapides Parishes, Louisiana, and more particularly described as follows: Beginning at a point having a Coordinate of X = 1,711,100.00 and Y = 839,545.62; thence East 18,400.00 feet to a point having Coordinate of X = 1,729,500.00 and Y = 839,545.62; thence South 18,309.62 feet to the Northeast corner of State Lease No. 17880 to a point having a Coordinate of X = 1,729,500.00 and Y = 821,236.00; thence West 5,500 feet along the Northern boundary of State Lease No. 17880 to a point having Coordinates of X = 1,724,000.00 and Y = 821,236.00; thence South 89 degrees 35 minutes 55 seconds West 12,900.32 to a point having a Coordinate of X = 1,711,100.00 and Y = 821,145.62; thence North 18,399.38 feet to the point of beginning, **LESS AND EXCEPT** any right, title, and interest in lands owned by and not under lease from the State of Louisiana, on behalf of the Avoyelles and Rapides Parish School Boards, situated in Section 16, Township 1 South, Range 2 East, Avoyelles and Rapides Parishes, Louisiana, contained within the above described tract, (This tract includes only waterbottoms claimed and owned by the state and specifically excludes any land which the state or Wildlife and Fisheries may claim or own and to which the mineral rights are vested in them), containing approximately **65 acres**, all as more particularly outlined on a plat on file in the Office of Mineral Resources, Department of Natural Resources. All bearings, distances and coordinates are based on Louisiana Coordinate System of 1927, (North or South Zone), where applicable.

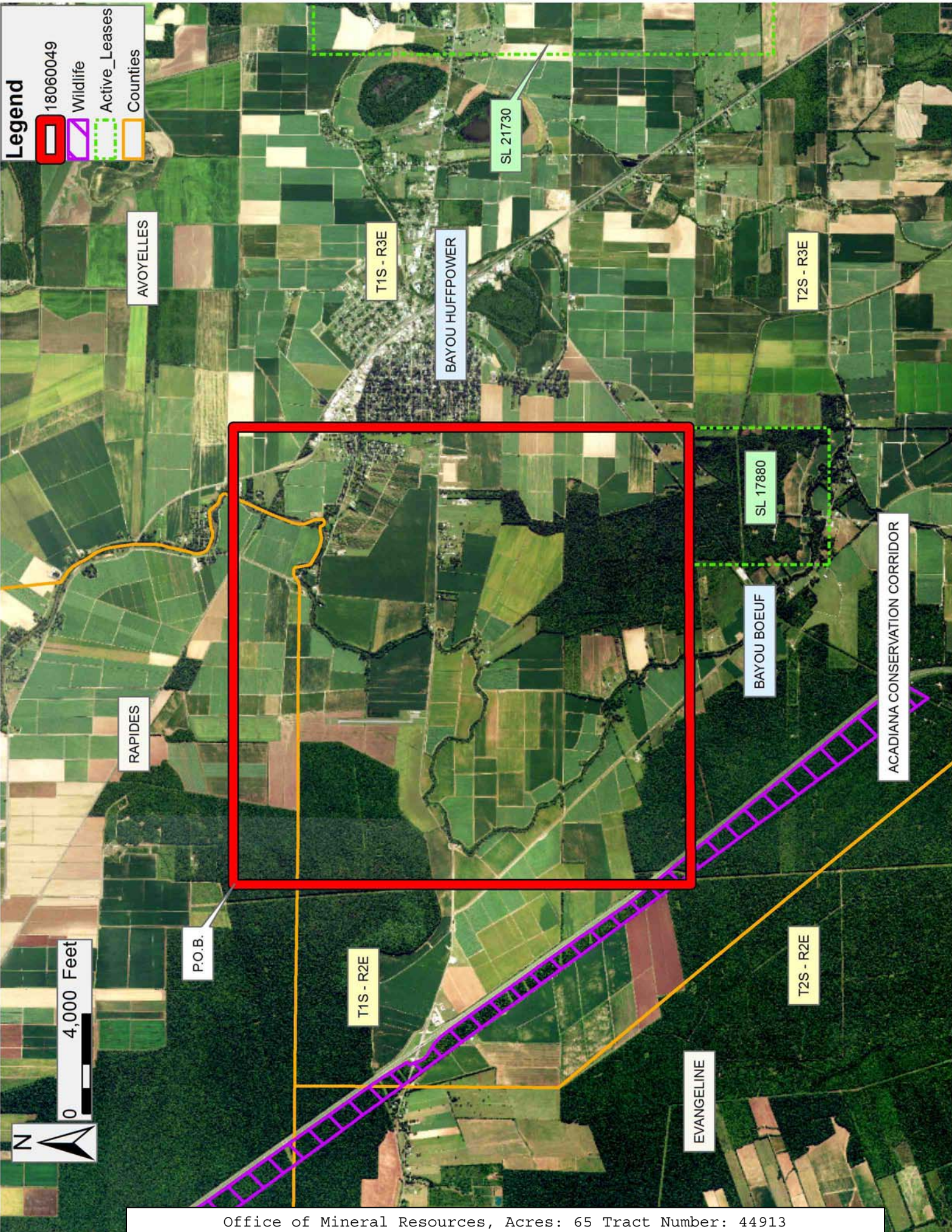
NOTE: The above description of the Tract nominated for the purpose of acquiring a mineral lease or a geophysical agreement has been provided and corrected, where required, exclusively by the nominating party. Any mineral lease or geophysical agreement selected from this Tract and awarded by the Louisiana State Mineral and Energy Board shall be without warranty of any kind, either express, implied or statutory including, but not limited to, title or the implied warranties of merchantability and fitness for a particular purpose.

An error or omission in the nominating party's Tract description may require that a State mineral lease or geophysical agreement be modified, canceled or abrogated due to the existence of conflicting leases, operating agreements, private claims or other future obligations or conditions within the Tract described. In such case, however, the Louisiana State Mineral and Energy Board shall not be obligated to refund any consideration paid by the Lessee prior to such modification, cancellation or abrogation including, but not limited to, bonuses, rentals and royalties.

NOTE: The Office of Mineral Resources will require a minimum bonus of \$500 per acre and a minimum royalty of 25%.

Applicant: MURRAY PRESLEY

Bidder	Cash Payment	Price/ Acre	Rental	Oil	Gas	Other



TRACT 44914 - Avoyelles Parish, Louisiana

All of the lands now or formerly constituting the beds and bottoms of all water bodies of every nature and description as to which title is vested in the State of Louisiana, together with all islands arising therein and other lands formed by accretion or by reliction, where allowed by law, excepting tax adjudicated lands, and not presently under mineral lease on June 13, 2018, situated in Avoyelles Parish, Louisiana, and more particularly described as follows: Beginning at a point having a Coordinate of X = 1,729,500.00 and Y = 839,545.62; thence East 15,012.16 feet to a point having Coordinate of X = 1,744,512.16 and Y = 839,545.62; thence South 3,290.01 feet to a point of the Northwest boundary of State Lease No. 21730 having a Coordinate of X = 1,744,512.16 and Y = 836,255.61; thence South 15,019.61 feet to a point having Coordinates of X = 1,744,512.16 and Y = 821,236.00; thence West 15,012.16 feet to the point on the Northeast corner of State Lease No. 17880 having a Coordinate of X = 1,729,500.00 and Y = 821,236.00; thence North 18,309.62 feet to the point of beginning, **LESS AND EXCEPT** any right, title, and interest in lands owned by and not under lease from the State of Louisiana, on behalf of the Avoyelles Parish School Board, situated in Section 16, Township 1 South, Range 3 East, Avoyelles Parish, Louisiana, contained within the above described tract, (This lease includes only waterbottoms claimed and owned by the state and specifically excludes any land which the state may claim or own and to which the mineral rights are vested in the state), containing approximately **47 acres**, all as more particularly outlined on a plat on file in the Office of Mineral Resources, Department of Natural Resources. All bearings, distances and coordinates are based on Louisiana Coordinate System of 1927, (North or South Zone), where applicable.

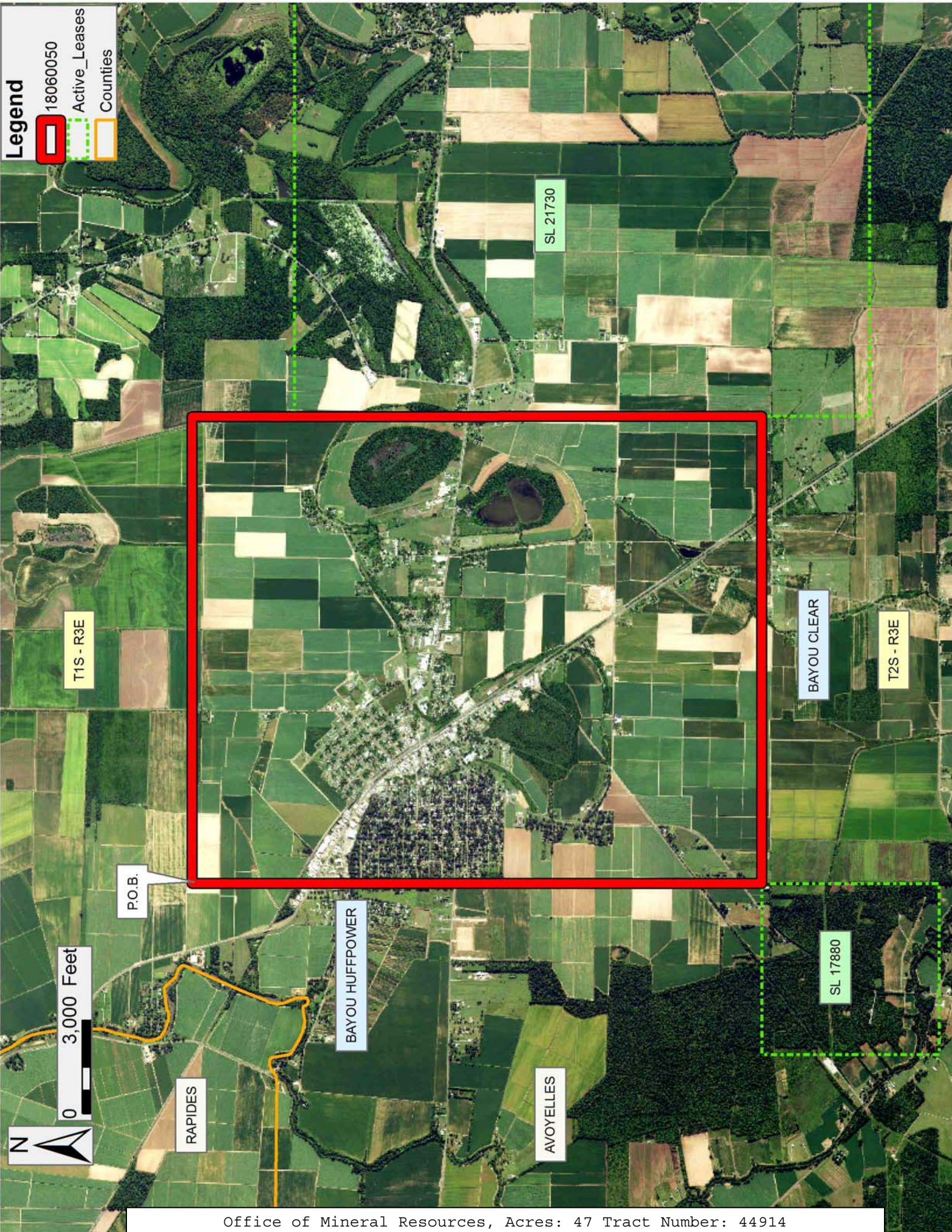
NOTE: The above description of the Tract nominated for the purpose of acquiring a mineral lease or a geophysical agreement has been provided and corrected, where required, exclusively by the nominating party. Any mineral lease or geophysical agreement selected from this Tract and awarded by the Louisiana State Mineral and Energy Board shall be without warranty of any kind, either express, implied or statutory including, but not limited to, title or the implied warranties of merchantability and fitness for a particular purpose.

An error or omission in the nominating party's Tract description may require that a State mineral lease or geophysical agreement be modified, canceled or abrogated due to the existence of conflicting leases, operating agreements, private claims or other future obligations or conditions within the Tract described. In such case, however, the Louisiana State Mineral and Energy Board shall not be obligated to refund any consideration paid by the Lessee prior to such modification, cancellation or abrogation including, but not limited to, bonuses, rentals and royalties.

NOTE: The Office of Mineral Resources will require a minimum bonus of \$500 per acre and a minimum royalty of 25%.

Applicant: MURRAY PRESLEY

Bidder	Cash Payment	Price/ Acre	Rental	Oil	Gas	Other



TRACT 44915 - Evangeline and Rapides Parishes, Louisiana

All of the lands now or formerly constituting the beds and bottoms of all water bodies of every nature and description as to which title is vested in the State of Louisiana, together with all islands arising therein and other lands formed by accretion or by reliction, where allowed by law, excepting tax adjudicated lands, and not presently under mineral lease on June 13, 2018, situated in Evangeline and Rapides Parishes, Louisiana, and more particularly described as follows: Beginning at a point having Coordinates of X = 1,629,120.49 and Y = 832,574.49; thence East 18,480.00 feet to a point having Coordinates of X = 1,647,600.49 and Y = 832,574.49; thence South 18,480.00 feet to a point having Coordinates of X = 1,647,600.49 and Y = 814,094.49; thence West 18,480.00 feet to a point having Coordinates of X = 1,629,120.49 and Y = 814,094.49; thence North 18,480.00 feet to the point of beginning, containing approximately **31 acres**, all as more particularly outlined on a plat on file in the Office of Mineral Resources, Department of Natural Resources. All bearings, distances and coordinates are based on Louisiana Coordinate System of 1927, (North or South Zone), where applicable.

NOTE: The above description of the Tract nominated for the purpose of acquiring a mineral lease or a geophysical agreement has been provided and corrected, where required, exclusively by the nominating party. Any mineral lease or geophysical agreement selected from this Tract and awarded by the Louisiana State Mineral and Energy Board shall be without warranty of any kind, either express, implied or statutory including, but not limited to, title or the implied warranties of merchantability and fitness for a particular purpose.

An error or omission in the nominating party's Tract description may require that a State mineral lease or geophysical agreement be modified, canceled or abrogated due to the existence of conflicting leases, operating agreements, private claims or other future obligations or conditions within the Tract described. In such case, however, the Louisiana State Mineral and Energy Board shall not be obligated to refund any consideration paid by the Lessee prior to such modification, cancellation or abrogation including, but not limited to, bonuses, rentals and royalties.

NOTE: The Office of Mineral Resources will require a minimum bonus of \$500 per acre and a minimum royalty of 25%.

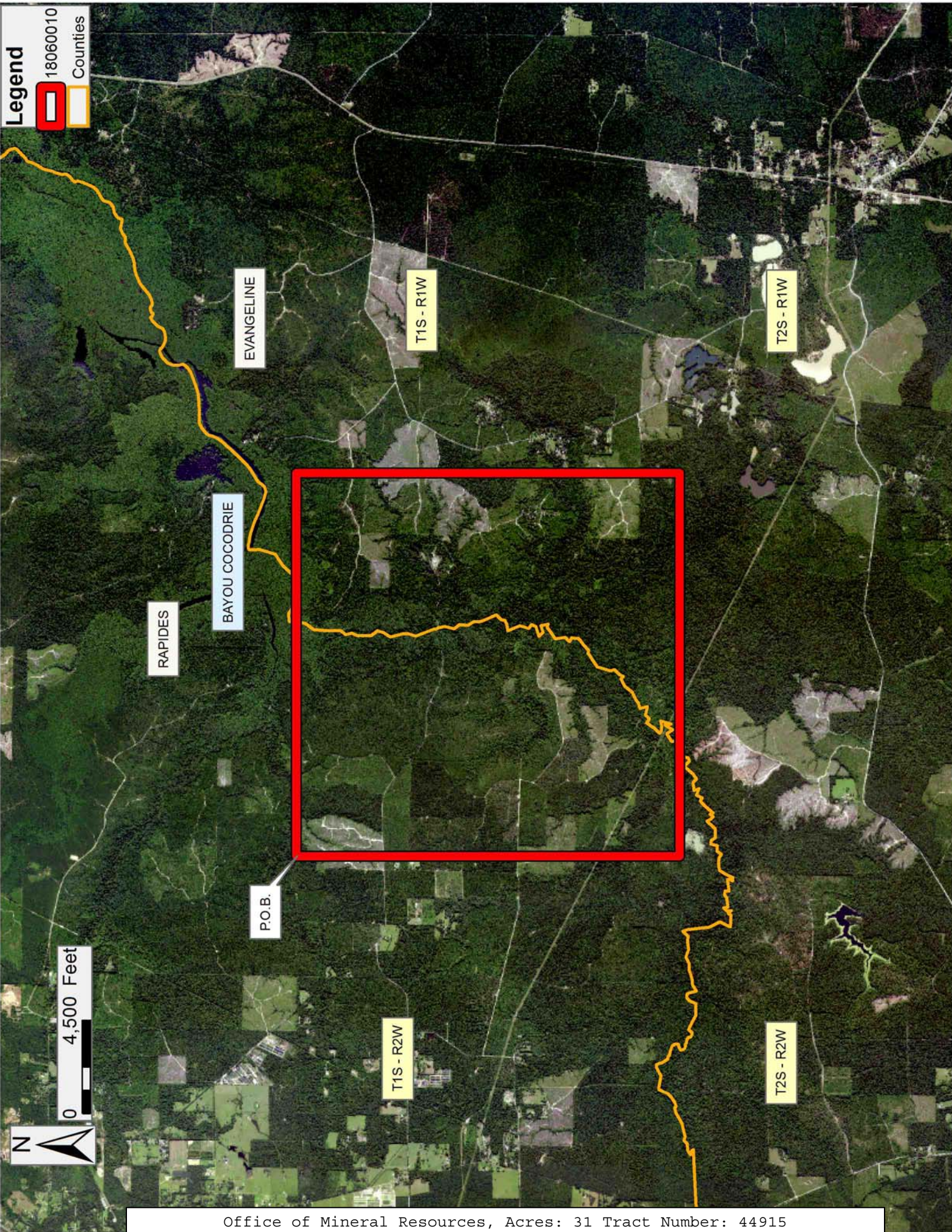
Applicant: MURRAY PRESELY

Bidder	Cash Payment	Price/ Acre	Rental	Oil	Gas	Other

Legend


18060010


Counties




N

0
4,500 Feet

TRACT 44916 - Avoyelles and Evangeline Parishes, Louisiana

All of the lands now or formerly constituting the beds and bottoms of all water bodies of every nature and description as to which title is vested in the State of Louisiana, together with all islands arising therein and other lands formed by accretion or by reliction, where allowed by law, excepting tax adjudicated lands, and not presently under mineral lease on June 13, 2018, situated in Avoyelles and Evangeline Parishes, Louisiana, and more particularly described as follows: Beginning at a point on the Southern boundary of State Lease No. 18864, as amended, having Coordinates of X = 1,687,217.50 and Y = 826,163.99; thence along the boundary of said State Lease No. 18864, as amended, the following: South 89 degrees 36 minutes 36 seconds East 4,512.39 feet to a point having Coordinates of X = 1,691,729.79 and Y = 826,133.28, and North 53 degrees 59 minutes 21 seconds East 761.55 to a point having Coordinates of X = 1,692,345.81 and Y = 826,581.02; thence East 10,980.77 feet to a point having Coordinates of X = 1,703,326.58 and Y = 826,581.02; thence South 15,738.02 feet to a point having Coordinates of X = 1,703,326.58 and Y = 810,843.00; thence East 16,109.07 feet to a point having Coordinates of X = 1,687,217.51 and Y = 810,843.00; thence North 15,320.99 feet to the point of beginning, containing approximately **31 acres**, all as more particularly outlined on a plat on file in the Office of Mineral Resources, Department of Natural Resources. All bearings, distances and coordinates are based on Louisiana Coordinate System of 1927, (North or South Zone), where applicable.

NOTE: The above description of the Tract nominated for the purpose of acquiring a mineral lease or a geophysical agreement has been provided and corrected, where required, exclusively by the nominating party. Any mineral lease or geophysical agreement selected from this Tract and awarded by the Louisiana State Mineral and Energy Board shall be without warranty of any kind, either express, implied or statutory including, but not limited to, title or the implied warranties of merchantability and fitness for a particular purpose.

An error or omission in the nominating party's Tract description may require that a State mineral lease or geophysical agreement be modified, canceled or abrogated due to the existence of conflicting leases, operating agreements, private claims or other future obligations or conditions within the Tract described. In such case, however, the Louisiana State Mineral and Energy Board shall not be obligated to refund any consideration paid by the Lessee prior to such modification, cancellation or abrogation including, but not limited to, bonuses, rentals and royalties.

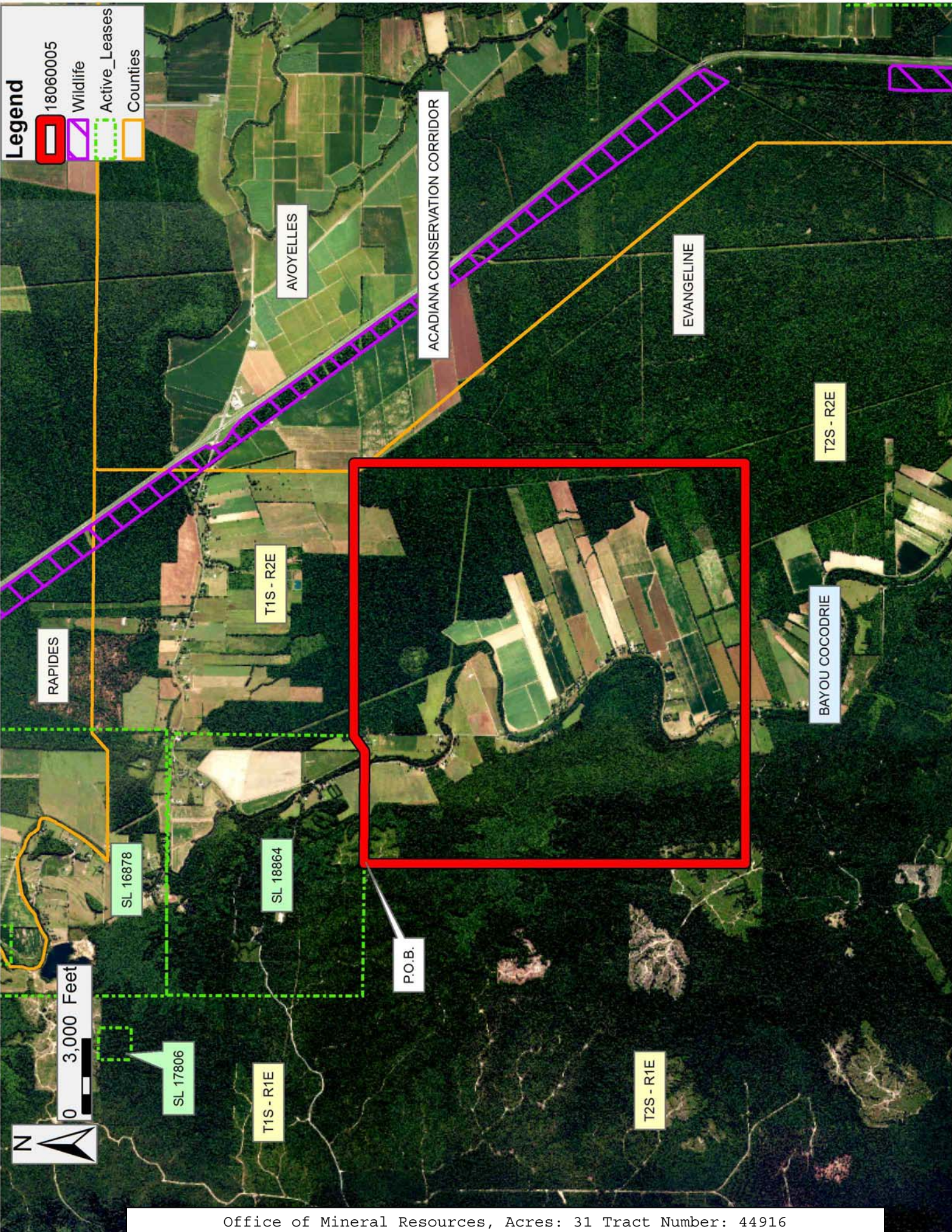
NOTE: The Office of Mineral Resources will require a minimum bonus of \$500 per acre and a minimum royalty of 25%.

NOTE: A portion of this tract is located on or adjacent to a Louisiana designated Natural and Scenic River. The applicant must obtain authorization from the Louisiana Department of Wildlife and Fisheries,

Scenic Rivers Program prior to initiating any activities within or adjacent to the river, including, but not limited to, crossings by roads and pipelines, well sites, production facilities and water withdrawals.

Applicant: MURRAY PRESELY

Bidder	Cash Payment	Price/ Acre	Rental	Oil	Gas	Other



TRACT 44917 - Avoyelles and Evangeline Parishes, Louisiana

All of the lands now or formerly constituting the beds and bottoms of all water bodies of every nature and description as to which title is vested in the State of Louisiana, together with all islands arising therein and other lands formed by accretion or by reliction, where allowed by law, excepting tax adjudicated lands, and not presently under mineral lease on June 13, 2018, situated in Avoyelles and Evangeline Parishes, Louisiana, and more particularly described as follows: Beginning at a point having a Coordinate of X = 1,711,100.00 and Y = 821,145.62; thence North 89 degrees 35 minutes 55 seconds East 12,900.32 feet to a point on the Northwest boundary of State Lease No. 17880 having Coordinate of X = 1,724,000.00 and Y = 821,236.00; thence South 5,700.00 feet to a point on Southwest boundary of State Lease No. 17880 having a Coordinate of X = 1,724,000.00 and Y = 815,536.00; thence along the Southern boundary of State Lease No. 17880 East 5,500.00 feet to a point on the Southeast corner of State Lease No. 17880 having Coordinates of X = 1,729,500.00 and Y = 815,536.00; thence South 8,787.78 feet to the Northern point of State Lease No. 21708 having Coordinates of X = 1,729,500.00 and Y = 806,748.22; thence along the Northern boundary of State Lease No. 21708 West 7,773.42 feet to a point on the Northwest Boundary of State Lease No. 21708 having Coordinates of X = 1,721,726.58 and Y = 806,748.22; thence West 10,626.58 feet to a point having Coordinates of X = 1,711,100.00 and Y = 806,748.22; thence North 14,397.40 feet to the point of beginning, (This tract includes only waterbottoms claimed and owned by the state and specifically excludes any land which the state or Wildlife and Fisheries may claim or own and to which the mineral rights are vested in them), containing approximately **28 acres**, all as more particularly outlined on a plat on file in the Office of Mineral Resources, Department of Natural Resources. All bearings, distances and coordinates are based on Louisiana Coordinate System of 1927, (North or South Zone), where applicable.

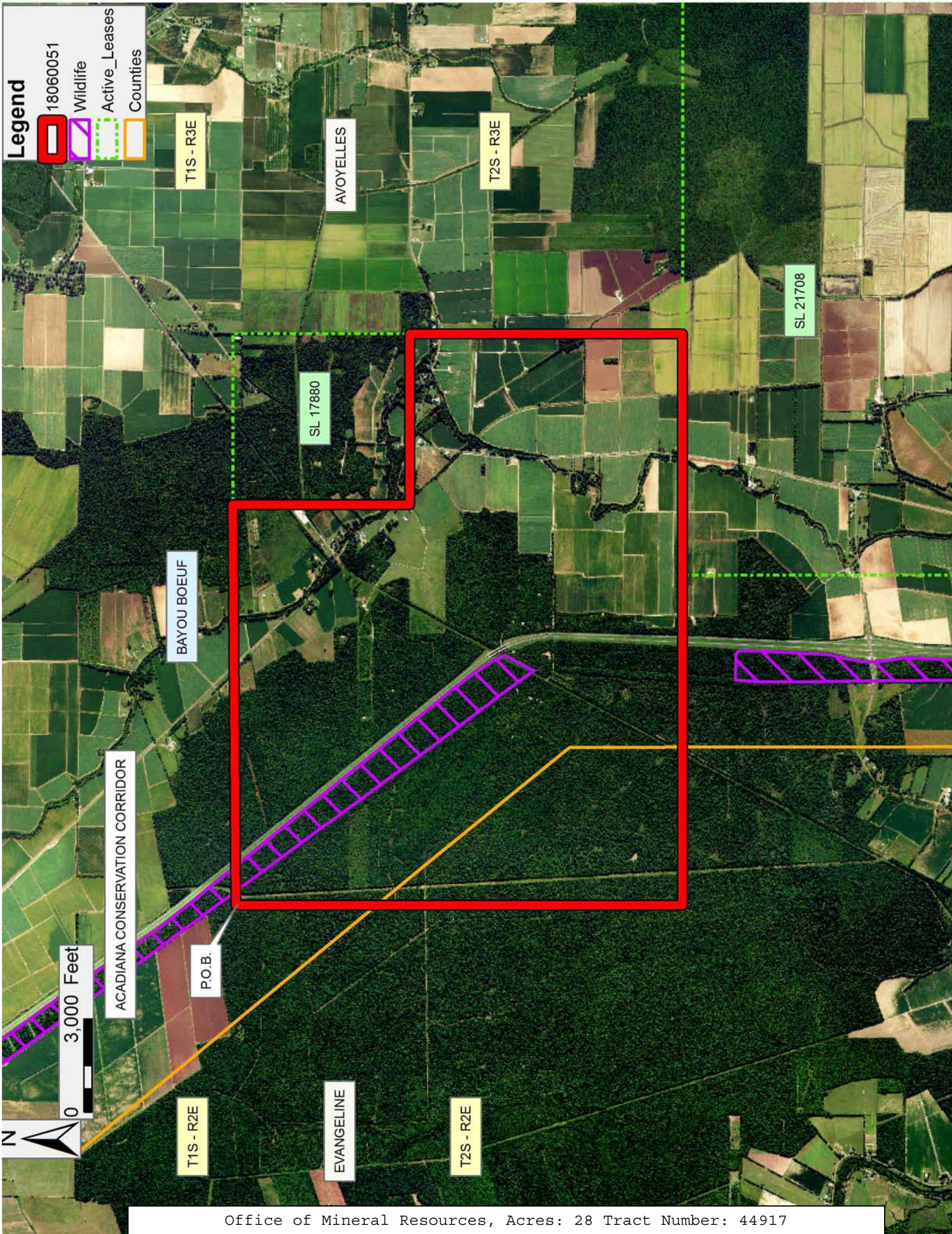
NOTE: The above description of the Tract nominated for the purpose of acquiring a mineral lease or a geophysical agreement has been provided and corrected, where required, exclusively by the nominating party. Any mineral lease or geophysical agreement selected from this Tract and awarded by the Louisiana State Mineral and Energy Board shall be without warranty of any kind, either express, implied or statutory including, but not limited to, title or the implied warranties of merchantability and fitness for a particular purpose.

An error or omission in the nominating party's Tract description may require that a State mineral lease or geophysical agreement be modified, canceled or abrogated due to the existence of conflicting leases, operating agreements, private claims or other future obligations or conditions within the Tract described. In such case, however, the Louisiana State Mineral and Energy Board shall not be obligated to refund any consideration paid by the Lessee prior to such modification, cancellation or abrogation including, but not limited to, bonuses, rentals and royalties.

NOTE: The Office of Mineral Resources will require a minimum bonus of \$500 per acre and a minimum royalty of 25%.

Applicant: MURRAY PRESLEY

Bidder	Cash Payment	Price/ Acre	Rental	Oil	Gas	Other



TRACT 44918 - Avoyelles Parish, Louisiana

All of the lands now or formerly constituting the beds and bottoms of all water bodies of every nature and description as to which title is vested in the State of Louisiana, together with all islands arising therein and other lands formed by accretion or by reliction, where allowed by law, excepting tax adjudicated lands, and not presently under mineral lease on June 13, 2018, situated in Avoyelles Parish, Louisiana, and more particularly described as follows: Beginning at a point on the Northeast Corner of State Lease No. 17880 having a Coordinate of X = 1,729,500.00 and Y = 821,236.00; thence East 15,012.16 feet to a point on the Western line of State Lease No. 21730 having Coordinate of X = 1,744,512.16 and Y = 821,236.00; thence South 3,460.39 feet to a point on the Southwest corner of State Lease No. 21730 having a Coordinate of X = 1,744,512.16 and Y = 817,775.61 thence South 11,027.39 feet to a point having a Coordinate of X = 1,744,512.16 and Y = 806,748.22; thence West 4,305.58 feet to a point on the Northeast corner of State Lease No. 21708 having Coordinates of X = 1,740,206.58 and Y = 806,748.22; thence West 10,706.58 feet along the Northern boundary of State Lease No. 21708 having a Coordinate of X = 1,729,500.00 and Y = 806,748.22; thence North 8,787.78 feet to the Southeast corner of State Lease No. 17880 having a Coordinate of X = 1,729,500.00 and Y = 815,536.00; thence North 5,700 feet to the Northeast corner of State Lease No. 17880 having a Coordinate of X = 1,729,500.00 and Y = 821,236.00 to the point of beginning, **LESS AND EXCEPT** any right, title, and interest in lands owned by and not under lease from the State of Louisiana, on behalf of the Avoyelles Parish School Board, situated in Section 16, Township 2 South, Range 3 East, Avoyelles Parish, Louisiana, contained within the above described tract, containing approximately **12 acres**, all as more particularly outlined on a plat on file in the Office of Mineral Resources, Department of Natural Resources. All bearings, distances and coordinates are based on Louisiana Coordinate System of 1927, (North or South Zone), where applicable.

NOTE: The above description of the Tract nominated for the purpose of acquiring a mineral lease or a geophysical agreement has been provided and corrected, where required, exclusively by the nominating party. Any mineral lease or geophysical agreement selected from this Tract and awarded by the Louisiana State Mineral and Energy Board shall be without warranty of any kind, either express, implied or statutory including, but not limited to, title or the implied warranties of merchantability and fitness for a particular purpose.

An error or omission in the nominating party's Tract description may require that a State mineral lease or geophysical agreement be modified, canceled or abrogated due to the existence of conflicting leases, operating agreements, private claims or other future obligations or conditions within the Tract described. In such case, however, the Louisiana State Mineral and Energy Board shall not be obligated to refund any consideration paid by the Lessee prior to such modification,

cancellation or abrogation including, but not limited to, bonuses, rentals and royalties.

NOTE: The Office of Mineral Resources will require a minimum bonus of \$500 per acre and a minimum royalty of 25%.

Applicant: MURRAY PRESLEY

Bidder	Cash Payment	Price/ Acre	Rental	Oil	Gas	Other

