

TRACT 44899 - Rapides Parish, Louisiana

All of the lands now or formerly constituting the beds and bottoms of all water bodies of every nature and description as to which title is vested in the State of Louisiana, together with all islands arising therein and other lands formed by accretion or by reliction, where allowed by law, excepting tax adjudicated lands, and not presently under mineral lease on June 13, 2018, situated in Rapides Parish, Louisiana, and more particularly described as follows: Beginning at a point having a Coordinate of X = 1,629,002.29 and Y = 897,359.71; thence East 13,673.61 feet to a point having Coordinate of X = 1,642,675.90 and Y = 897,359.71; thence South 18,400.00 feet to a point having a Coordinate of X = 1,642,675.90 and Y = 878,959.71; thence West 13,673.61 feet to a point having Coordinates of X = 1,629,002.29 and Y = 878,959.71; thence North 18,400.00 feet to the point of beginning, (This tract includes only waterbottoms claimed and owned by the state and specifically excludes any land which the state or Wildlife and Fisheries may claim or own and to which the mineral rights are vested in them), containing approximately **5 acres**, all as more particularly outlined on a plat on file in the Office of Mineral Resources, Department of Natural Resources. All bearings, distances and coordinates are based on Louisiana Coordinate System of 1927, (North or South Zone), where applicable.

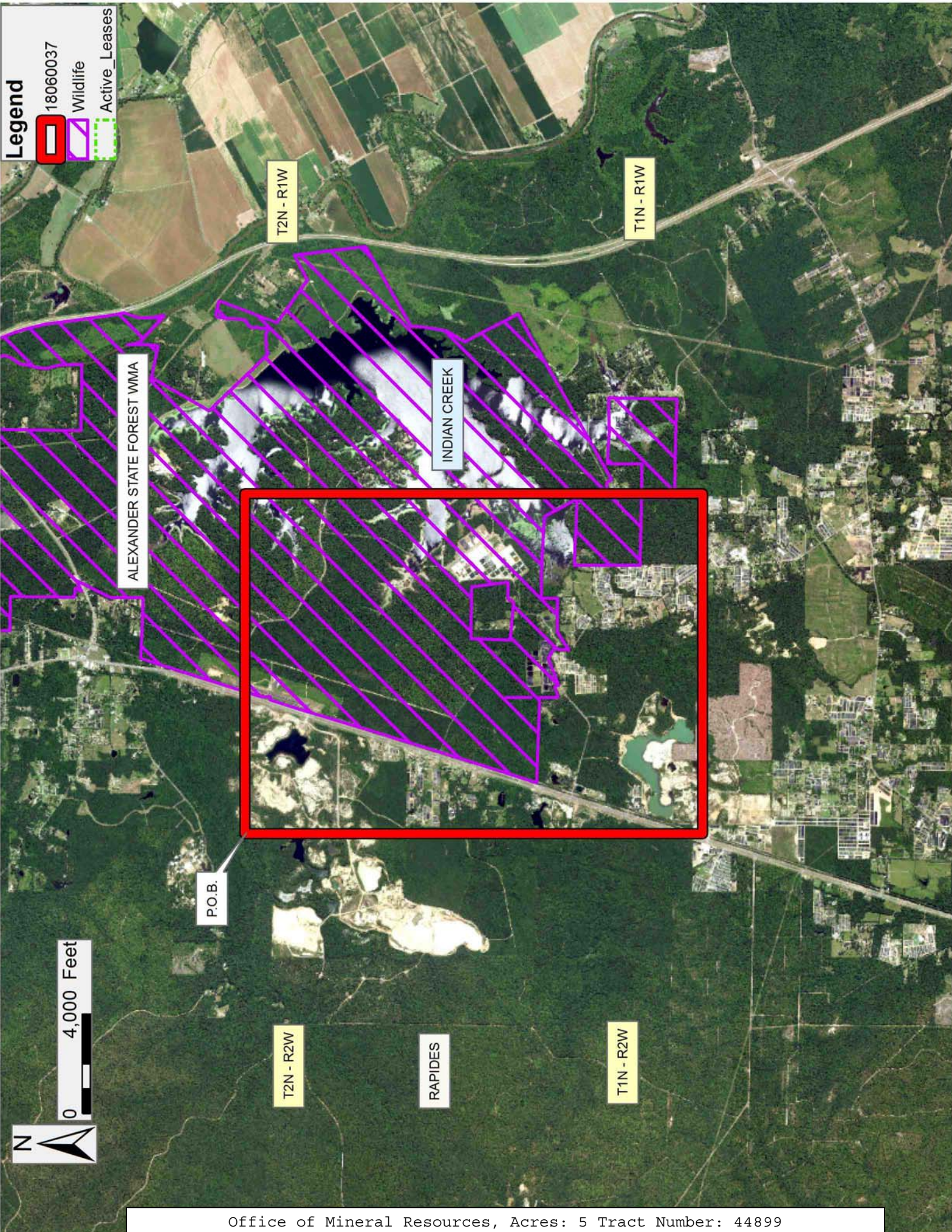
NOTE: The above description of the Tract nominated for the purpose of acquiring a mineral lease or a geophysical agreement has been provided and corrected, where required, exclusively by the nominating party. Any mineral lease or geophysical agreement selected from this Tract and awarded by the Louisiana State Mineral and Energy Board shall be without warranty of any kind, either express, implied or statutory including, but not limited to, title or the implied warranties of merchantability and fitness for a particular purpose.

An error or omission in the nominating party's Tract description may require that a State mineral lease or geophysical agreement be modified, canceled or abrogated due to the existence of conflicting leases, operating agreements, private claims or other future obligations or conditions within the Tract described. In such case, however, the Louisiana State Mineral and Energy Board shall not be obligated to refund any consideration paid by the Lessee prior to such modification, cancellation or abrogation including, but not limited to, bonuses, rentals and royalties.

NOTE: The Office of Mineral Resources will require a minimum bonus of \$500 per acre and a minimum royalty of 25%.

Applicant: MURRAY PRESLEY

Bidder	Cash Payment	Price/ Acre	Rental	Oil	Gas	Other



TRACT 44900 - Rapides Parish, Louisiana

All of the lands now or formerly constituting the beds and bottoms of all water bodies of every nature and description as to which title is vested in the State of Louisiana, together with all islands arising therein and other lands formed by accretion or by reliction, where allowed by law, excepting tax adjudicated lands, and not presently under mineral lease on June 13, 2018, situated in Rapides Parish, Louisiana, and more particularly described as follows: Beginning at a point having a Coordinate of X = 1,642,675.90 and Y = 897,359.71; thence East 18,400.00 feet to a point having Coordinate of X = 1,661,075.90 and Y = 897,359.71; thence South 18,400.00 feet to a point having a Coordinate of X = 1,661,075.90 and Y = 878,959.71; thence West 18,400.00 feet to a point having Coordinates of X = 1,642,975.90 and Y = 878,959.71; thence North 18,400.00 feet to the point of beginning, (This tract includes only waterbottoms claimed and owned by the state and specifically excludes any land which the state or Wildlife and Fisheries may claim or own and to which the mineral rights are vested in them), containing approximately **94 acres**, all as more particularly outlined on a plat on file in the Office of Mineral Resources, Department of Natural Resources. All bearings, distances and coordinates are based on Louisiana Coordinate System of 1927, (North or South Zone), where applicable.

NOTE: The above description of the Tract nominated for the purpose of acquiring a mineral lease or a geophysical agreement has been provided and corrected, where required, exclusively by the nominating party. Any mineral lease or geophysical agreement selected from this Tract and awarded by the Louisiana State Mineral and Energy Board shall be without warranty of any kind, either express, implied or statutory including, but not limited to, title or the implied warranties of merchantability and fitness for a particular purpose.

An error or omission in the nominating party's Tract description may require that a State mineral lease or geophysical agreement be modified, canceled or abrogated due to the existence of conflicting leases, operating agreements, private claims or other future obligations or conditions within the Tract described. In such case, however, the Louisiana State Mineral and Energy Board shall not be obligated to refund any consideration paid by the Lessee prior to such modification, cancellation or abrogation including, but not limited to, bonuses, rentals and royalties.

NOTE: The Office of Mineral Resources will require a minimum bonus of \$500 per acre and a minimum royalty of 25%.

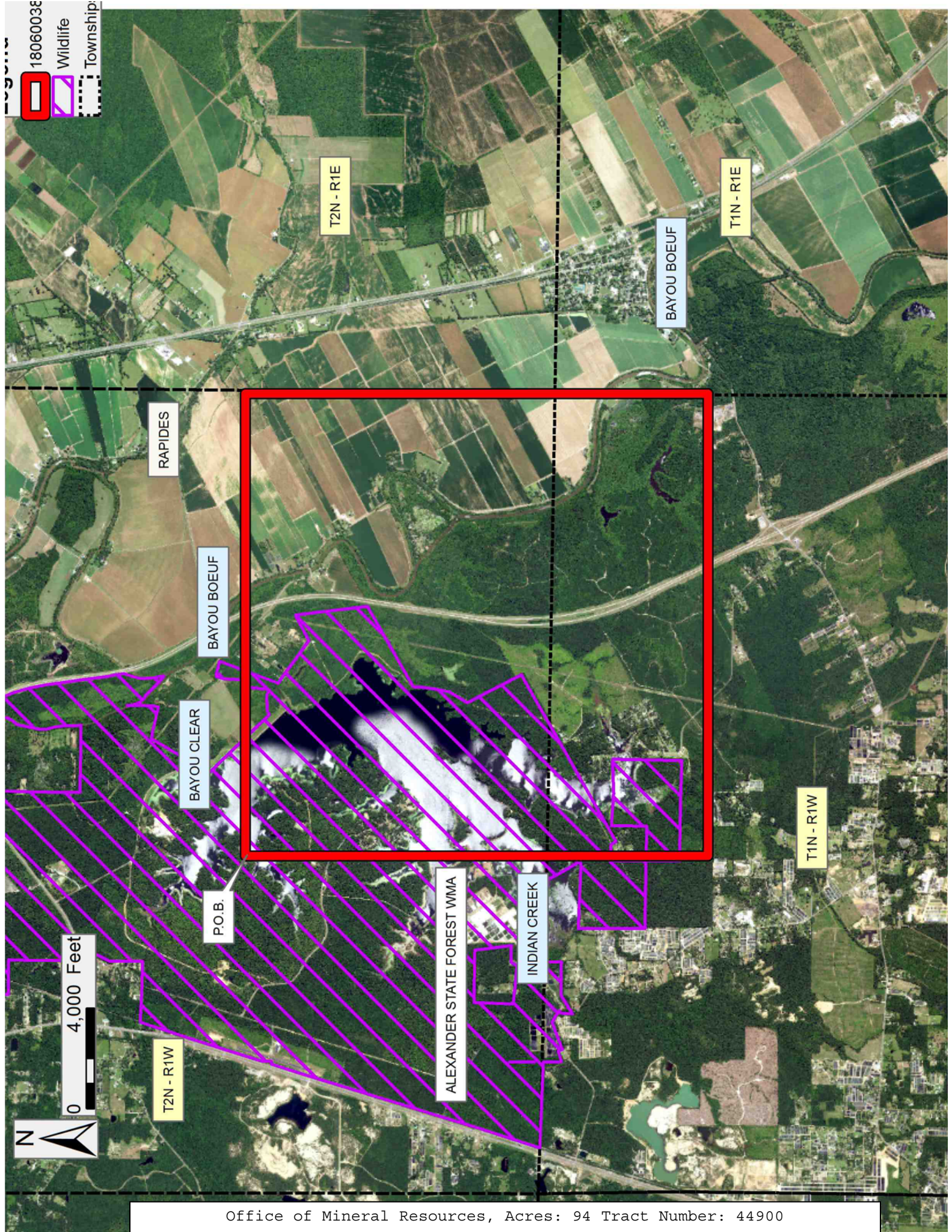
Applicant: MURRAY PRESLEY

Bidder	Cash Payment	Price/ Acre	Rental	Oil	Gas	Other

18060038

Wildlife

Township:



TRACT 44901 - Avoyelles Parish, Louisiana

All of the lands now or formerly constituting the beds and bottoms of all water bodies of every nature and description as to which title is vested in the State of Louisiana, together with all islands arising therein and other lands formed by accretion or by reliction, where allowed by law, excepting tax adjudicated lands, and not presently under mineral lease on June 13, 2018, situated in Avoyelles Parish, Louisiana, and more particularly described as follows: Beginning at a point having a Coordinate of X = 1,742,411.22 and Y = 891,935.59; thence East 13,132.11 feet to a point having Coordinate of X = 1,755,543.33 and Y = 891,935.59; thence South 18,400.00 feet to a point having a Coordinate of X = 1,755,543.33 and Y = 873,535.59; thence West 13,132.11 feet to a point having Coordinates of X = 1,742,411.22 and Y = 873,535.59; thence North 18,400.00 feet to the point of beginning, containing approximately **27 acres**, all as more particularly outlined on a plat on file in the Office of Mineral Resources, Department of Natural Resources. All bearings, distances and coordinates are based on Louisiana Coordinate System of 1927, (North or South Zone), where applicable.

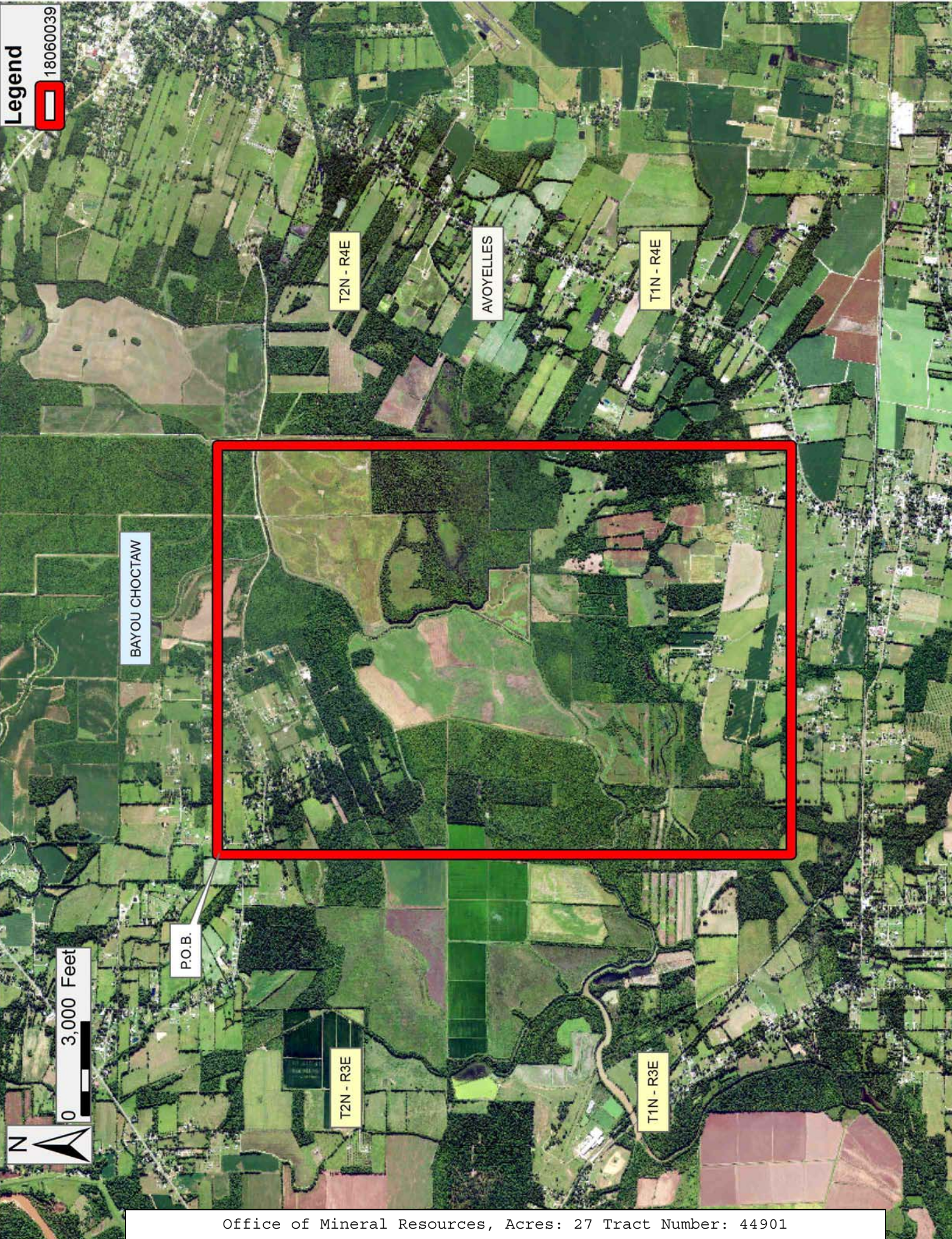
NOTE: The above description of the Tract nominated for the purpose of acquiring a mineral lease or a geophysical agreement has been provided and corrected, where required, exclusively by the nominating party. Any mineral lease or geophysical agreement selected from this Tract and awarded by the Louisiana State Mineral and Energy Board shall be without warranty of any kind, either express, implied or statutory including, but not limited to, title or the implied warranties of merchantability and fitness for a particular purpose.

An error or omission in the nominating party's Tract description may require that a State mineral lease or geophysical agreement be modified, canceled or abrogated due to the existence of conflicting leases, operating agreements, private claims or other future obligations or conditions within the Tract described. In such case, however, the Louisiana State Mineral and Energy Board shall not be obligated to refund any consideration paid by the Lessee prior to such modification, cancellation or abrogation including, but not limited to, bonuses, rentals and royalties.

NOTE: The Office of Mineral Resources will require a minimum bonus of \$500 per acre and a minimum royalty of 25%.

Applicant: MURRAY PRESLEY

Bidder	Cash Payment	Price/ Acre	Rental	Oil	Gas	Other



TRACT 44902 - Rapides Parish, Louisiana

All of the lands now or formerly constituting the beds and bottoms of all water bodies of every nature and description as to which title is vested in the State of Louisiana, together with all islands arising therein and other lands formed by accretion or by reliction, where allowed by law, excepting tax adjudicated lands, and not presently under mineral lease on June 13, 2018, situated in Rapides Parish, Louisiana, and more particularly described as follows: Beginning at a point having a Coordinate of X = 1,661,075.90 and Y = 886,682.99; thence East 13,224.10 feet to a point having Coordinate of X = 1,674,300.00 and Y = 886,682.99; thence South 12,000.00 feet to a point having a Coordinate of X = 1,674,300.00 and Y = 874,682.99; thence West 13,224.10 feet to a point having Coordinates of X = 1,661,075.90 and Y = 874,682.99; thence North 12,000.00 feet to the point of beginning, (This lease includes only waterbottoms claimed and owned by the state and specifically excludes any land which the state may claim or own and to which the mineral rights are vested in the state), containing approximately **51 acres**, all as more particularly outlined on a plat on file in the Office of Mineral Resources, Department of Natural Resources. All bearings, distances and coordinates are based on Louisiana Coordinate System of 1927, (North or South Zone), where applicable.

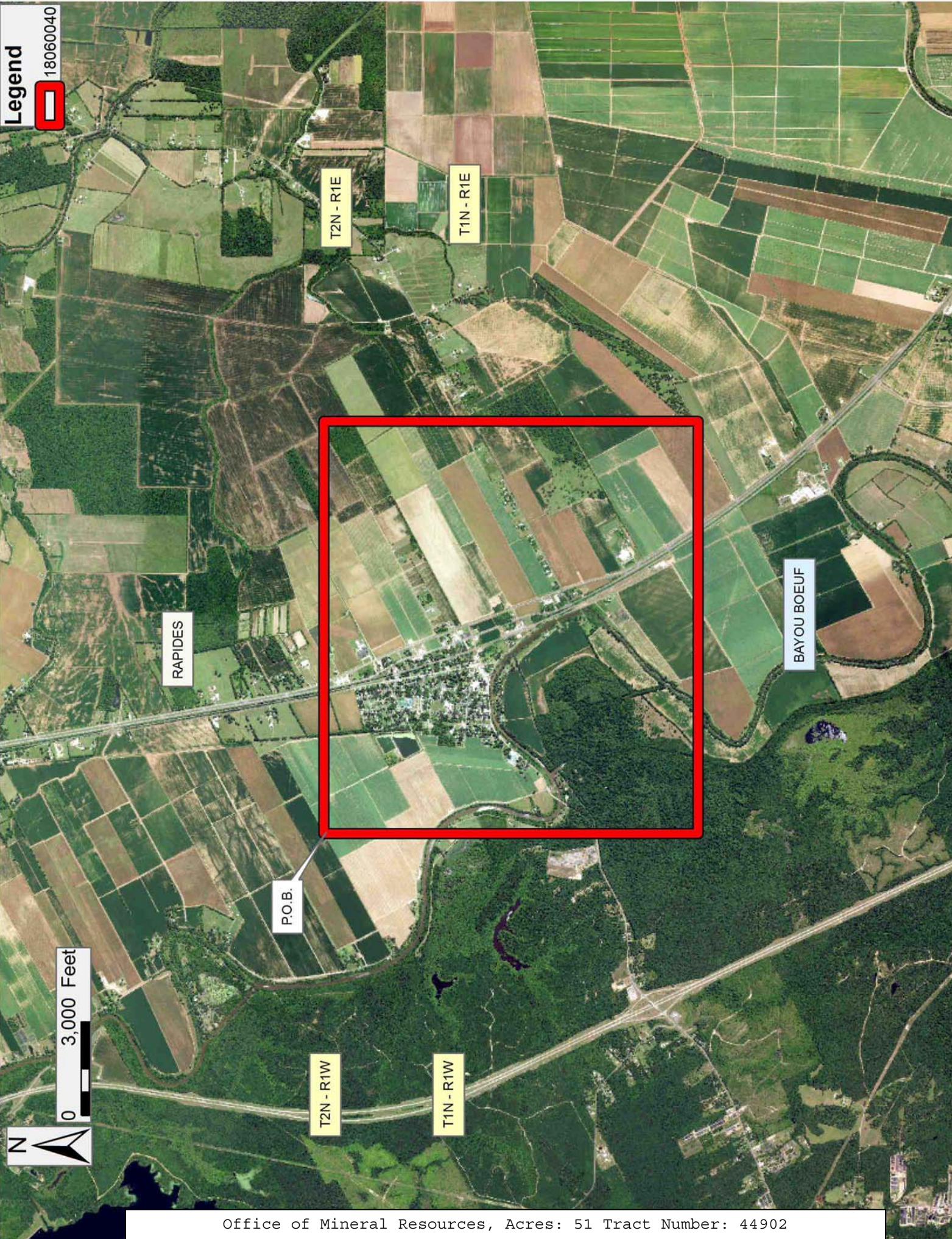
NOTE: The above description of the Tract nominated for the purpose of acquiring a mineral lease or a geophysical agreement has been provided and corrected, where required, exclusively by the nominating party. Any mineral lease or geophysical agreement selected from this Tract and awarded by the Louisiana State Mineral and Energy Board shall be without warranty of any kind, either express, implied or statutory including, but not limited to, title or the implied warranties of merchantability and fitness for a particular purpose.

An error or omission in the nominating party's Tract description may require that a State mineral lease or geophysical agreement be modified, canceled or abrogated due to the existence of conflicting leases, operating agreements, private claims or other future obligations or conditions within the Tract described. In such case, however, the Louisiana State Mineral and Energy Board shall not be obligated to refund any consideration paid by the Lessee prior to such modification, cancellation or abrogation including, but not limited to, bonuses, rentals and royalties.

NOTE: The Office of Mineral Resources will require a minimum bonus of \$500 per acre and a minimum royalty of 25%.

Applicant: MURRAY PRESLEY

Bidder	Cash Payment	Price/ Acre	Rental	Oil	Gas	Other



TRACT 44903 - Avoyelles Parish, Louisiana

All of the lands now or formerly constituting the beds and bottoms of all water bodies of every nature and description as to which title is vested in the State of Louisiana, together with all islands arising therein and other lands formed by accretion or by reliction, where allowed by law, excepting tax adjudicated lands, and not presently under mineral lease on June 13, 2018, situated in Avoyelles Parish, Louisiana, and more particularly described as follows: Beginning at a point having a Coordinate of X = 1,724,011.22 and Y = 881,079.47; thence East 18,400.00 feet to a point having Coordinate of X = 1,742,411.22 and Y = 881,079.47; thence South 18,400.00 feet to a point having a Coordinate of X = 1,742,411.22 and Y = 862,679.47; thence West 18,400.00 feet to a point having Coordinates of X = 1,724,011.22 and Y = 862,679.47; thence North 18,400.00 feet to the point of beginning, **LESS AND EXCEPT** any right, title, and interest in lands owned by and not under lease from the State of Louisiana, on behalf of the Avoyelles Parish School Board, situated in Section 16, Township 1 North, Range 3 East, Avoyelles Parish, Louisiana, contained within the above described tract, containing approximately **72 acres**, all as more particularly outlined on a plat on file in the Office of Mineral Resources, Department of Natural Resources. All bearings, distances and coordinates are based on Louisiana Coordinate System of 1927, (North or South Zone), where applicable.

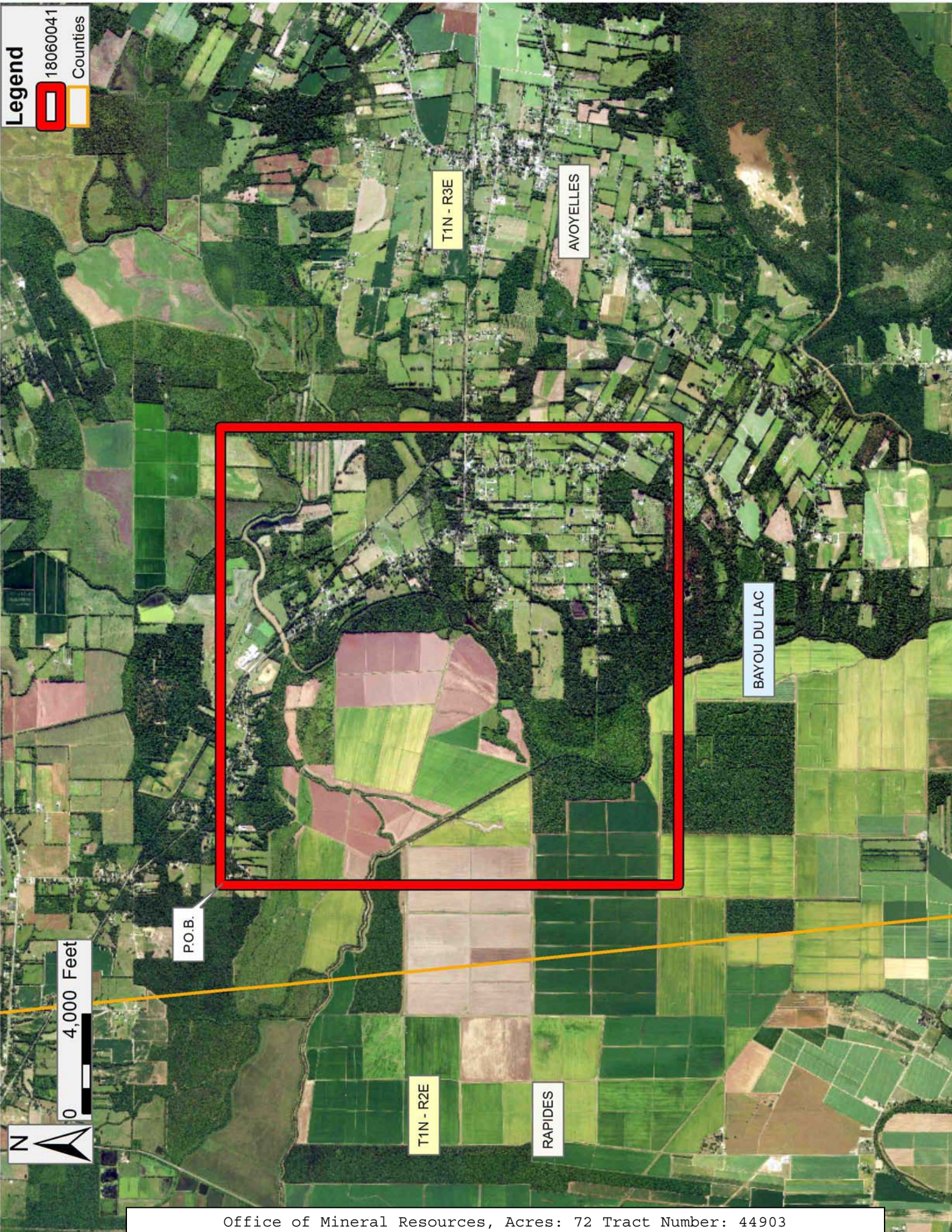
NOTE: The above description of the Tract nominated for the purpose of acquiring a mineral lease or a geophysical agreement has been provided and corrected, where required, exclusively by the nominating party. Any mineral lease or geophysical agreement selected from this Tract and awarded by the Louisiana State Mineral and Energy Board shall be without warranty of any kind, either express, implied or statutory including, but not limited to, title or the implied warranties of merchantability and fitness for a particular purpose.

An error or omission in the nominating party's Tract description may require that a State mineral lease or geophysical agreement be modified, canceled or abrogated due to the existence of conflicting leases, operating agreements, private claims or other future obligations or conditions within the Tract described. In such case, however, the Louisiana State Mineral and Energy Board shall not be obligated to refund any consideration paid by the Lessee prior to such modification, cancellation or abrogation including, but not limited to, bonuses, rentals and royalties.

NOTE: The Office of Mineral Resources will require a minimum bonus of \$500 per acre and a minimum royalty of 25%.

Applicant: MURRAY PRESLEY

Bidder	Cash Payment	Price/ Acre	Rental	Oil	Gas	Other



Legend

18060041

Counties

T1N - R3E

AVOYELLES

BAYOU DU LAC

T1N - R2E

RAPIDES

P.O.B.

0 4,000 Feet

N

TRACT 44904 - Rapides Parish, Louisiana

All of the lands now or formerly constituting the beds and bottoms of all water bodies of every nature and description as to which title is vested in the State of Louisiana, together with all islands arising therein and other lands formed by accretion or by reliction, where allowed by law, excepting tax adjudicated lands, and not presently under mineral lease on June 13, 2018, situated in Rapides Parish, Louisiana, and more particularly described as follows: Beginning at a point having a Coordinate of X = 1,661,075.90 and Y = 874,682.99; thence East 13,224.10 feet to a point having Coordinate of X = 1,674,300.00 and Y = 874,682.99; thence South 18,400.00 feet to a point having a Coordinate of X = 1,674,300.00 and Y = 856,282.99; thence West 13,224.10 feet to a point having Coordinates of X = 1,661,075.90 and Y = 856,282.99; thence North 18,400.00 feet to the point of beginning, containing approximately **70 acres**, all as more particularly outlined on a plat on file in the Office of Mineral Resources, Department of Natural Resources. All bearings, distances and coordinates are based on Louisiana Coordinate System of 1927, (North or South Zone), where applicable.

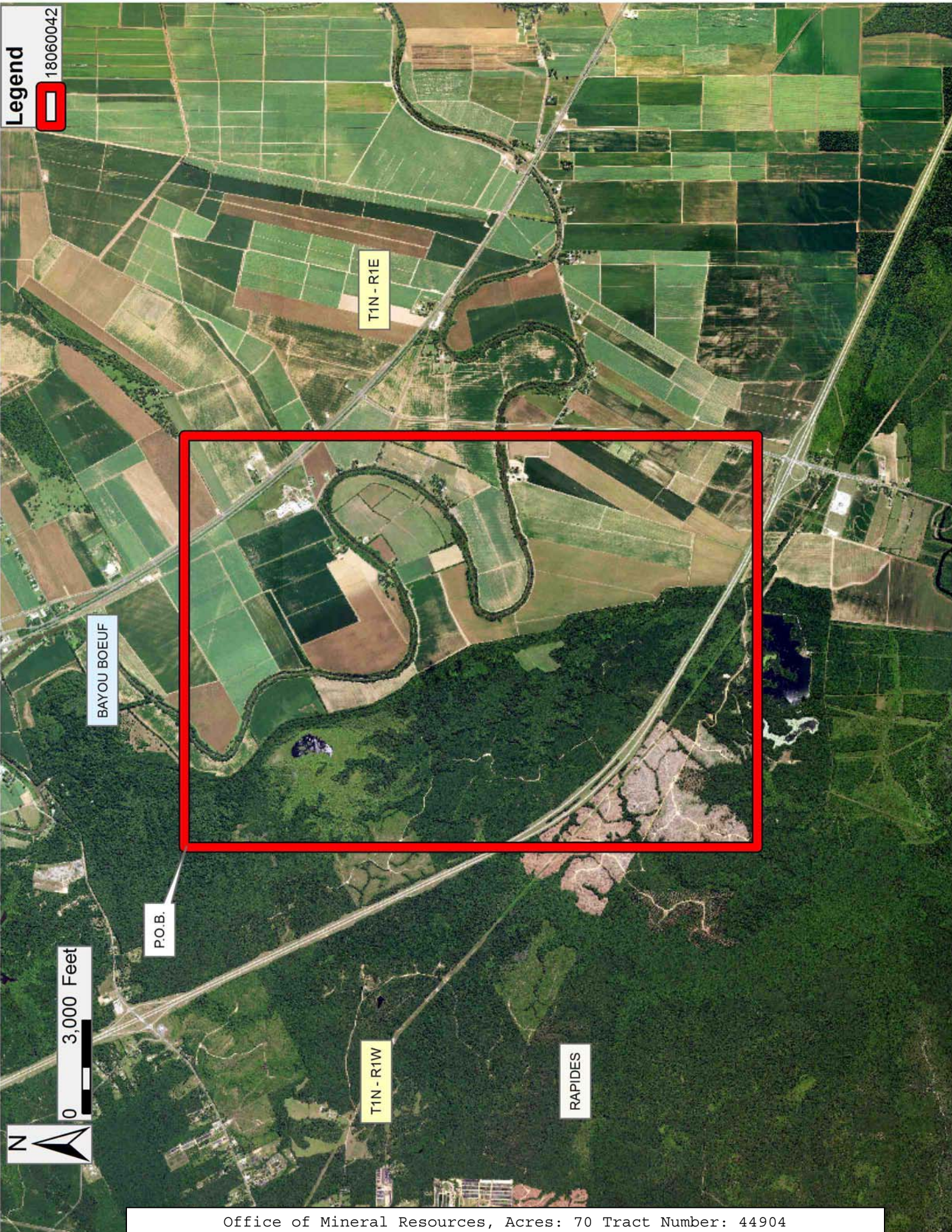
NOTE: The above description of the Tract nominated for the purpose of acquiring a mineral lease or a geophysical agreement has been provided and corrected, where required, exclusively by the nominating party. Any mineral lease or geophysical agreement selected from this Tract and awarded by the Louisiana State Mineral and Energy Board shall be without warranty of any kind, either express, implied or statutory including, but not limited to, title or the implied warranties of merchantability and fitness for a particular purpose.

An error or omission in the nominating party's Tract description may require that a State mineral lease or geophysical agreement be modified, canceled or abrogated due to the existence of conflicting leases, operating agreements, private claims or other future obligations or conditions within the Tract described. In such case, however, the Louisiana State Mineral and Energy Board shall not be obligated to refund any consideration paid by the Lessee prior to such modification, cancellation or abrogation including, but not limited to, bonuses, rentals and royalties.

NOTE: The Office of Mineral Resources will require a minimum bonus of \$500 per acre and a minimum royalty of 25%.

Applicant: MURRAY PRESLEY

Bidder	Cash Payment	Price/ Acre	Rental	Oil	Gas	Other



TRACT 44905 - Rapides Parish, Louisiana

All of the lands now or formerly constituting the beds and bottoms of all water bodies of every nature and description as to which title is vested in the State of Louisiana, together with all islands arising therein and other lands formed by accretion or by reliction, where allowed by law, excepting tax adjudicated lands, and not presently under mineral lease on June 13, 2018, situated in Rapides Parish, Louisiana, and more particularly described as follows: Beginning at a point having a Coordinate of X = 1,674,300.00 and Y = 874,682.99; thence East 18,400.00 feet to a point having Coordinate of X = 1,692,700.00 and Y = 874,682.99; thence South 18,400.00 feet to a point having a Coordinate of X = 1,692,700.00 and Y = 856,282.99; thence West 18,400.00 feet to a point having Coordinates of X = 1,674,300.00 and Y = 856,282.99; thence North 18,400.00 feet to the point of beginning, containing approximately **79 acres**, all as more particularly outlined on a plat on file in the Office of Mineral Resources, Department of Natural Resources. All bearings, distances and coordinates are based on Louisiana Coordinate System of 1927, (North or South Zone), where applicable.

NOTE: The above description of the Tract nominated for the purpose of acquiring a mineral lease or a geophysical agreement has been provided and corrected, where required, exclusively by the nominating party. Any mineral lease or geophysical agreement selected from this Tract and awarded by the Louisiana State Mineral and Energy Board shall be without warranty of any kind, either express, implied or statutory including, but not limited to, title or the implied warranties of merchantability and fitness for a particular purpose.

An error or omission in the nominating party's Tract description may require that a State mineral lease or geophysical agreement be modified, canceled or abrogated due to the existence of conflicting leases, operating agreements, private claims or other future obligations or conditions within the Tract described. In such case, however, the Louisiana State Mineral and Energy Board shall not be obligated to refund any consideration paid by the Lessee prior to such modification, cancellation or abrogation including, but not limited to, bonuses, rentals and royalties.

NOTE: The Office of Mineral Resources will require a minimum bonus of \$500 per acre and a minimum royalty of 25%.

Applicant: MURRAY PRESLEY

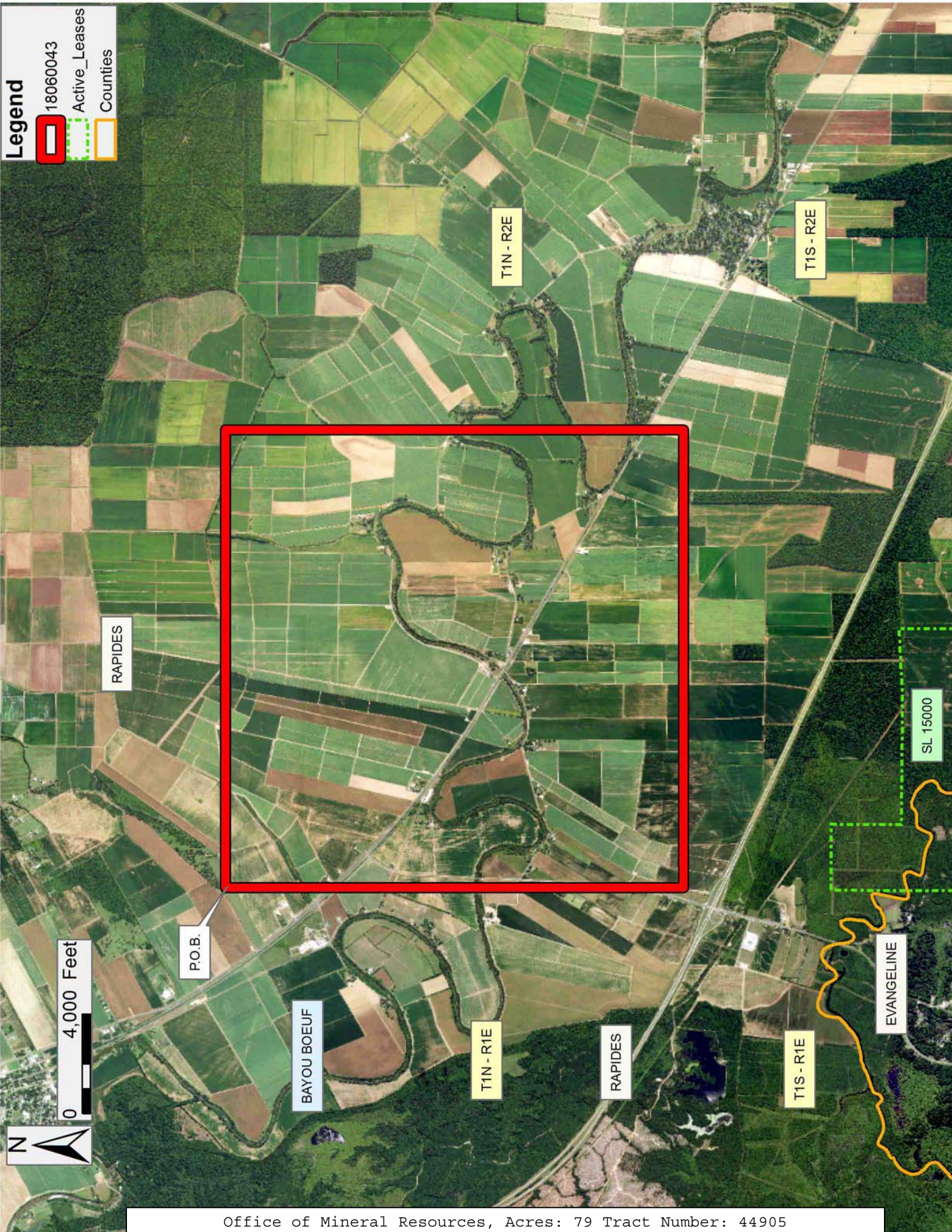
Bidder	Cash Payment	Price/ Acre	Rental	Oil	Gas	Other

Legend

18060043

Active_Leases

Counties



TRACT 44906 - Rapides Parish, Louisiana

All of the lands now or formerly constituting the beds and bottoms of all water bodies of every nature and description as to which title is vested in the State of Louisiana, together with all islands arising therein and other lands formed by accretion or by reliction, where allowed by law, excepting tax adjudicated lands, and not presently under mineral lease on June 13, 2018, situated in Rapides Parish, Louisiana, and more particularly described as follows: Beginning at a point having a Coordinate of X = 1,692,700.00 and Y = 865,879.96; thence East 18,400.00 feet to a point having Coordinate of X = 1,711,100.00 and Y = 865,879.96; thence South 18,400.00 feet to a point having a Coordinate of X = 1,711,100.00 and Y = 847,479.96; thence West 18,400.00 feet to a point having Coordinates of X = 1,692,700.00 and Y = 847,479.96; thence North 18,400.00 feet to the point of beginning, containing approximately **92 acres**, all as more particularly outlined on a plat on file in the Office of Mineral Resources, Department of Natural Resources. All bearings, distances and coordinates are based on Louisiana Coordinate System of 1927, (North or South Zone), where applicable.

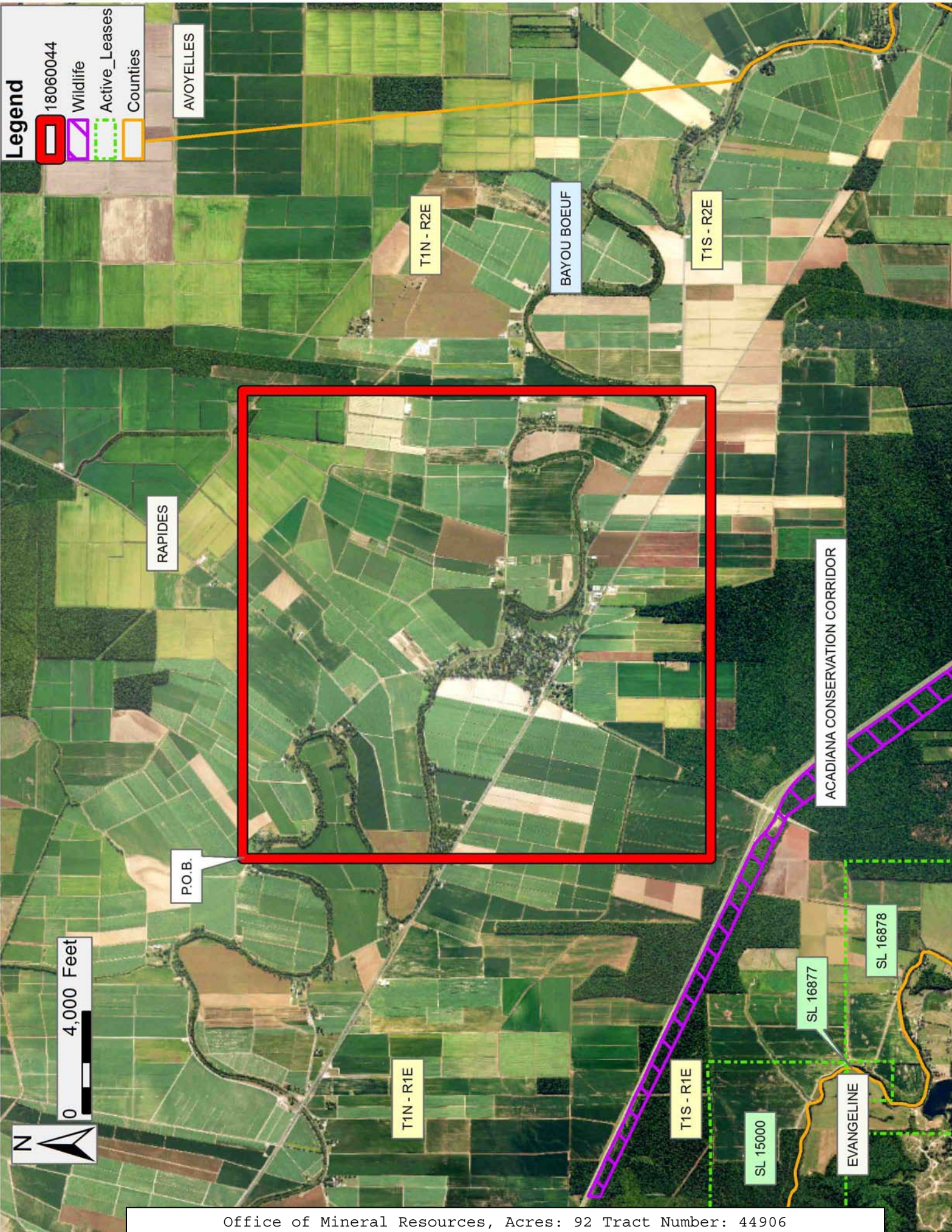
NOTE: The above description of the Tract nominated for the purpose of acquiring a mineral lease or a geophysical agreement has been provided and corrected, where required, exclusively by the nominating party. Any mineral lease or geophysical agreement selected from this Tract and awarded by the Louisiana State Mineral and Energy Board shall be without warranty of any kind, either express, implied or statutory including, but not limited to, title or the implied warranties of merchantability and fitness for a particular purpose.

An error or omission in the nominating party's Tract description may require that a State mineral lease or geophysical agreement be modified, canceled or abrogated due to the existence of conflicting leases, operating agreements, private claims or other future obligations or conditions within the Tract described. In such case, however, the Louisiana State Mineral and Energy Board shall not be obligated to refund any consideration paid by the Lessee prior to such modification, cancellation or abrogation including, but not limited to, bonuses, rentals and royalties.

NOTE: The Office of Mineral Resources will require a minimum bonus of \$500 per acre and a minimum royalty of 25%.

Applicant: MURRAY PRESLEY

Bidder	Cash Payment	Price/ Acre	Rental	Oil	Gas	Other



TRACT 44907 - Avoyelles Parish, Louisiana

All of the lands now or formerly constituting the beds and bottoms of all water bodies of every nature and description as to which title is vested in the State of Louisiana, together with all islands arising therein and other lands formed by accretion or by reliction, where allowed by law, excepting tax adjudicated lands, and not presently under mineral lease on June 13, 2018, situated in Avoyelles Parish, Louisiana, and more particularly described as follows: Beginning at a point having a Coordinate of X = 1,729,500.00 and Y = 862,679.47; thence East 18,296.43 feet to a point having Coordinate of X = 1,747,796.43 and Y = 862,679.47; thence South 15,755.20 feet to a point having a Coordinate of X = 1,747,796.43 and Y = 846,924.27; thence West 18,296.43 feet to a point having Coordinates of X = 1,729,500.00 and Y = 846,924.27; thence North 15,755.20 feet to the point of beginning, (This lease includes only waterbottoms claimed and owned by the state and specifically excludes any land which the state may claim or own and to which the mineral rights are vested in the state), containing approximately **70 acres**, all as more particularly outlined on a plat on file in the Office of Mineral Resources, Department of Natural Resources. All bearings, distances and coordinates are based on Louisiana Coordinate System of 1927, (North or South Zone), where applicable.

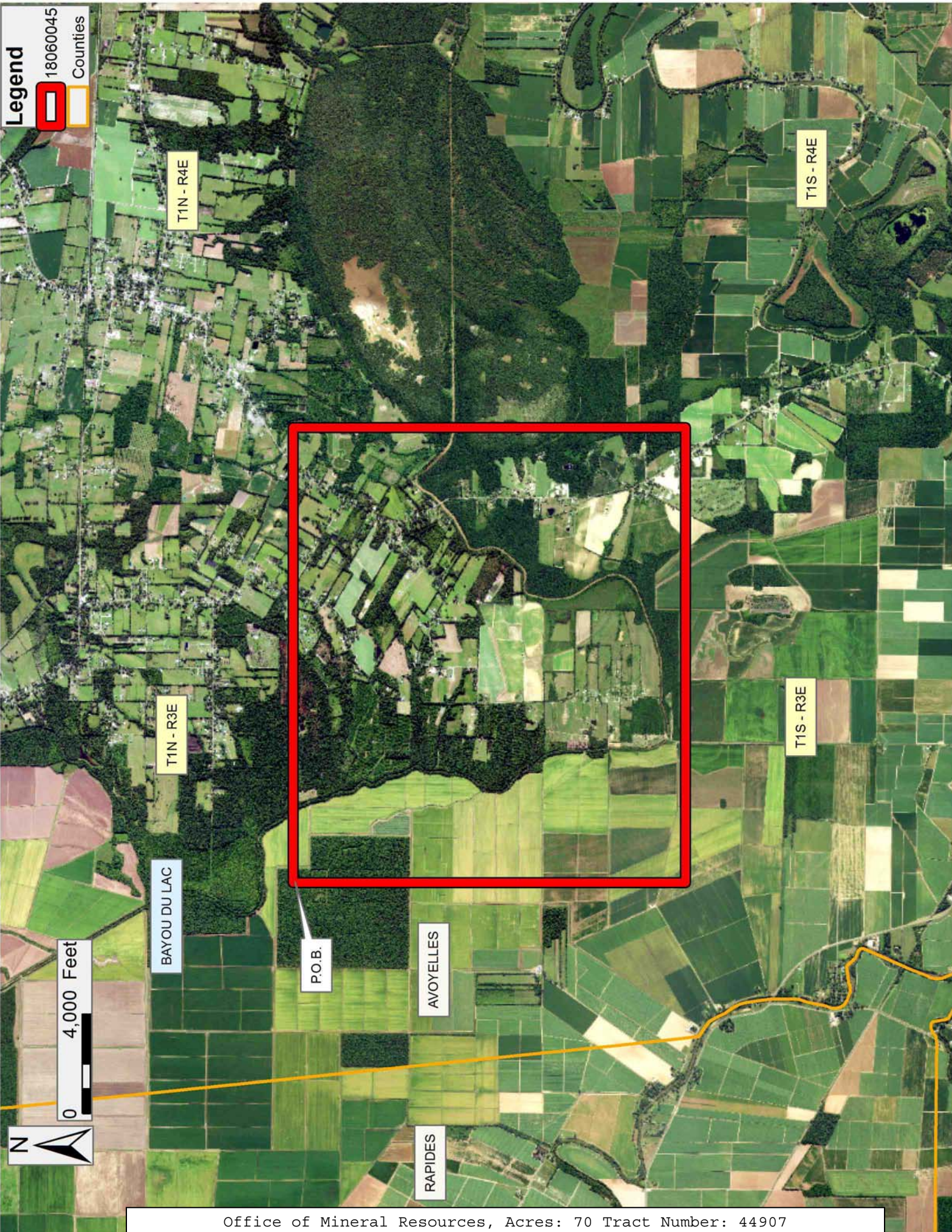
NOTE: The above description of the Tract nominated for the purpose of acquiring a mineral lease or a geophysical agreement has been provided and corrected, where required, exclusively by the nominating party. Any mineral lease or geophysical agreement selected from this Tract and awarded by the Louisiana State Mineral and Energy Board shall be without warranty of any kind, either express, implied or statutory including, but not limited to, title or the implied warranties of merchantability and fitness for a particular purpose.

An error or omission in the nominating party's Tract description may require that a State mineral lease or geophysical agreement be modified, canceled or abrogated due to the existence of conflicting leases, operating agreements, private claims or other future obligations or conditions within the Tract described. In such case, however, the Louisiana State Mineral and Energy Board shall not be obligated to refund any consideration paid by the Lessee prior to such modification, cancellation or abrogation including, but not limited to, bonuses, rentals and royalties.

NOTE: The Office of Mineral Resources will require a minimum bonus of \$500 per acre and a minimum royalty of 25%.

Applicant: MURRAY PRESLEY

Bidder	Cash Payment	Price/ Acre	Rental	Oil	Gas	Other



TRACT 44908 - Avoyelles Parish, Louisiana

All of the lands now or formerly constituting the beds and bottoms of all water bodies of every nature and description as to which title is vested in the State of Louisiana, together with all islands arising therein and other lands formed by accretion or by reliction, where allowed by law, excepting tax adjudicated lands, and not presently under mineral lease on June 13, 2018, situated in Avoyelles Parish, Louisiana, and more particularly described as follows: Beginning at a point having a Coordinate of X = 1,762,992.16 and Y = 862,080.97; thence East 18,400.00 feet to a point having Coordinate of X = 1,781,392.16 and Y = 862,080.97; thence South 18,400.00 feet to a point having a Coordinate of X = 1,781,392.16 and Y = 843,680.97; thence West 18,400.00 feet to a point having Coordinates of X = 1,762,992.16 and Y = 843,680.97; thence North 18,400.00 feet to the point of beginning, containing approximately **117 acres**, all as more particularly outlined on a plat on file in the Office of Mineral Resources, Department of Natural Resources. All bearings, distances and coordinates are based on Louisiana Coordinate System of 1927, (North or South Zone), where applicable.

NOTE: The above description of the Tract nominated for the purpose of acquiring a mineral lease or a geophysical agreement has been provided and corrected, where required, exclusively by the nominating party. Any mineral lease or geophysical agreement selected from this Tract and awarded by the Louisiana State Mineral and Energy Board shall be without warranty of any kind, either express, implied or statutory including, but not limited to, title or the implied warranties of merchantability and fitness for a particular purpose.

An error or omission in the nominating party's Tract description may require that a State mineral lease or geophysical agreement be modified, canceled or abrogated due to the existence of conflicting leases, operating agreements, private claims or other future obligations or conditions within the Tract described. In such case, however, the Louisiana State Mineral and Energy Board shall not be obligated to refund any consideration paid by the Lessee prior to such modification, cancellation or abrogation including, but not limited to, bonuses, rentals and royalties.

NOTE: The Office of Mineral Resources will require a minimum bonus of \$500 per acre and a minimum royalty of 25%.

Applicant: MURRAY PRESLEY

Bidder	Cash Payment	Price/ Acre	Rental	Oil	Gas	Other

Legend

18060046

0

4,000 Feet

N

T1N - R3E

T1N - R4E

T1N - R5E

P.O.B.

AVOYELLES

BAYOU DES GLAISES

T1S - R3E

T1S - R4E

T1S - R5E

Office of Mineral Resources, Acres: 117 Tract Number: 44908