

TRACT 39083 - Portion of Block 37, Breton Sound Area, Plaquemines Parish, Louisiana

The beds and bottoms of all water bodies belonging to the State of Louisiana located in Block 37, Breton Sound Area, together with any present lands formed by accretion to the shoreline or islands formed therein, located in Plaquemines Parish, Louisiana, owned by and not presently under mineral lease as of June 13, 2007, from the State of Louisiana, the geographical area of which is more fully described as follows: Beginning at the Southwest corner of Block 37, Breton Sound Area having Coordinates of X = 2,694,350.00 and Y = 307,580.00; thence North 2,912.12 feet along the West line of said Block 37 to a point on the Louisiana Coastline, as decreed by the Supreme Court of the United States, as determined by a Special Master appointed therein, in litigation styled *United States v. State of Louisiana et al No. 9 Original*, in 1975, having Coordinates of X = 2,694,350.00 and Y = 310,492.12; thence Northeasterly on a straight line, along said Louisiana Coastline, to a point on the East line of said Block 37 having Coordinates of X = 2,709,100.00 and Y = 315,555.59; thence South 7,975.59 feet along the East line of said Block 37 to its Southeast corner having Coordinates of X = 2,709,100.00 and Y = 307,580.00; thence West 14,750.00 feet along the South line of said Block 37 to the point of beginning, containing approximately **1,843.36 acres**, all as more particularly outlined on a plat on file in the Office of Mineral Resources, Department of Natural Resources. All bearings, distances and coordinates are based on Louisiana Coordinate System of 1927, (North or South Zone).

NOTE: The above description of the Tract nominated for lease has been provided and corrected, where required, exclusively by the nomination party. Any mineral lease selected from this Tract and awarded by the Louisiana State Mineral Board shall be without warranty of any kind, either express, implied, or statutory, including, but not limited to, the implied warranties of merchantability and fitness for a particular purpose. Should the mineral lease awarded by the Louisiana State Mineral Board be subsequently modified, cancelled or abrogated due to the existence of conflicting leases, operating agreements, private claims or other future obligations or conditions which may affect all or any portion of the leased Tract, it shall not relieve the Lessee of the obligation to pay any bonus due thereon to the Louisiana State Mineral Board, nor shall the Louisiana State Mineral Board be obligated to refund any consideration paid by the Lessor prior to such modification, cancellation, or abrogation, including, but not limited to, bonuses, rentals and royalties.

NOTE: The State of Louisiana does hereby reserve, and this lease shall be subject to, the imprescriptible right of surface use in the nature of a servitude in favor of the Department of Natural Resources, including its Offices and Commissions, for the sole purpose of implementing, constructing, servicing and maintaining approved coastal zone management and/or restoration projects. Utilization of any and all rights derived under this lease by the mineral lessee, its agents, successors or assigns,

shall not interfere with nor hinder the reasonable surface use by the Department of Natural Resources, its Offices or Commissions, as herein above reserved.

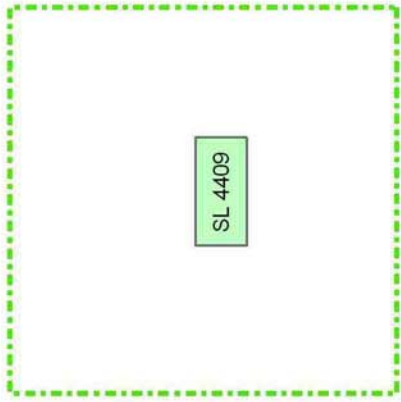
NOTE: It appears, according to our records, that a portion of this Tract is located within the restrictive safety fairway area as set out by the Corps of Engineers, U.S. Army and/or the restrictive anchorage area as set out by the U.S. Coast Guard.

Applicant: PECK ENERGY CORPORATION

Bidder	Cash Payment	Price/Acre	Rental	Oil	Gas	Other

Legend

- 07060041
- Blocks
- Active_Leases



PLAQUEMINES PARISH

BRETON SOUND AREA

BS0037

SL 4409

BS0044

BS0036

SL 1230

GULF OF MEXICO

P.O.B.



TRACT 39084 - Portion of Block 38, Breton Sound Area, Plaquemines Parish, Louisiana

The beds and bottoms of all water bodies belonging to the State of Louisiana located in Block 38, Breton Sound Area, together with any present lands formed by accretion to the shoreline or islands formed therein, located in Plaquemines Parish, Louisiana, owned by and not presently under mineral lease as of June 13, 2007, from the State of Louisiana, the geographical area of which is more fully described as follows: Beginning at the Southwest corner of Block 38, Breton Sound Area having Coordinates of X = 2,709,100.00 and Y = 307,580.00; thence North 7,375.00 feet along the West line of said Block 38 to a point having Coordinates of X = 2,709,100.00 and Y = 314,955.00; thence East 14,750.00 feet to a point on the East line of said Block 38 having Coordinates of X = 2,723,850.00 and Y = 314,955.00; thence South 7,375.00 feet along the East line of said Block 38 to its Southeast corner having Coordinates of X = 2,723,850.00 and Y = 307,580.00; thence West 14,750.00 feet along the South line of said Block 38 to the point of beginning, containing approximately **2,497.27 acres**, all as more particularly outlined on a plat on file in the Office of Mineral Resources, Department of Natural Resources. All bearings, distances and coordinates are based on Louisiana Coordinate System of 1927, (North or South Zone).

NOTE: The above description of the Tract nominated for lease has been provided and corrected, where required, exclusively by the nomination party. Any mineral lease selected from this Tract and awarded by the Louisiana State Mineral Board shall be without warranty of any kind, either express, implied, or statutory, including, but not limited to, the implied warranties of merchantability and fitness for a particular purpose. Should the mineral lease awarded by the Louisiana State Mineral Board be subsequently modified, cancelled or abrogated due to the existence of conflicting leases, operating agreements, private claims or other future obligations or conditions which may affect all or any portion of the leased Tract, it shall not relieve the Lessee of the obligation to pay any bonus due thereon to the Louisiana State Mineral Board, nor shall the Louisiana State Mineral Board be obligated to refund any consideration paid by the Lessor prior to such modification, cancellation, or abrogation, including, but not limited to, bonuses, rentals and royalties.

NOTE: The State of Louisiana does hereby reserve, and this lease shall be subject to, the imprescriptible right of surface use in the nature of a servitude in favor of the Department of Natural Resources, including its Offices and Commissions, for the sole purpose of implementing, constructing, servicing and maintaining approved coastal zone management and/or restoration projects. Utilization of any and all rights derived under this lease by the mineral lessee, its agents, successors or assigns, shall not interfere with nor hinder the reasonable surface use by the Department of Natural Resources, its Offices or Commissions, as herein above reserved.

NOTE: It appears, according to our records, that a portion of this Tract is located within the restrictive safety fairway area as set out by the Corps of Engineers, U.S. Army and/or the restrictive anchorage area as set out by the U.S. Coast Guard.

Applicant: PECK ENERGY CORPORATION

Bidder	Cash Payment	Price/Acre	Rental	Oil	Gas	Other



BS0039

BS0038

PLAQUEMINES PARISH

BRETON SOUND AREA

BS0043



BS0037

GULF OF MEXICO

P.O.B.

TRACT 39085 - Portion of Block 45, Breton Sound Area, Plaquemines Parish, Louisiana

The beds and bottoms of all water bodies belonging to the State of Louisiana located in Block 45, Breton Sound Area, together with any present lands formed by accretion to the shoreline or islands formed therein, located in Plaquemines Parish, Louisiana, owned by and not presently under mineral lease as of June 13, 2007, from the State of Louisiana, the geographical area of which is more fully described as follows: Beginning at the Northeast corner of Block 45, Breton Sound Area having Coordinates of X = 2,694,350.00 and Y = 307,580.00; thence South 6,750.00 feet along the East line of said Block 45 to the Northeast corner of State Lease No. 19052 having Coordinates of X = 2,694,350.00 and Y = 300,830.00; thence along the boundary of said State Lease No. 19052 the following courses: West 4,000.00 feet to its Northwest corner having Coordinates of X = 2,690,350.00 and Y = 300,830.00 and South 5,101.07 feet to its Southwest corner, also being a point on the Northwestern boundary of State Lease No. 17942 having Coordinates of X = 2,690,350.00 and Y = 295,728.93; thence South 64 degrees 19 minutes 10 seconds West 2,219.20 feet along the Northwestern boundary of said State Lease No. 17942 to the Southeast corner of State Lease No. 19050 having Coordinates of X = 2,688,350.00 and Y = 294,767.24; thence along the boundary of said State Lease No. 19050 the following courses: North 4,662.76 feet to its Northeast corner having Coordinates of X = 2,688,350.00 and Y = 299,430.00 and West 1,827.96 feet to its Northwest corner, also being the Northeast corner of State Lease No. 19080, and a point on the Louisiana Coastline, as decreed by the Supreme Court of the United States, as determined by a Special Master appointed therein, in litigation styled *United States v. State of Louisiana et al No. 9 Original*, in 1975, having Coordinates of X = 2,686,522.04 and Y = 299,430.00; thence along said Louisiana Coastline the following courses: Northeasterly on a straight line to a point having Coordinates of X = 2,687,014 and Y = 300,054; Northeasterly on a straight line to a point having Coordinates of X = 2,687,610 and Y = 301,648 and Northeasterly on a straight line to a point on the South boundary of State Lease No. 2001, as amended, having Coordinates of X = 2,687,625.35 and Y = 301,705.00; thence along the boundary of said State Lease No. 2001 the following courses: East 4,724.65 feet to its Southeast corner having Coordinates of X = 2,692,350.00 and Y = 301,705.00 and North 2,925.00 feet to its Northeast corner, also being the Southeast corner of State Lease No. 1237, as amended, having Coordinates of X = 2,692,350.00 and Y = 304,630.00; thence North 2,950.00 feet along the East boundary of said State Lease No. 1237 to a point on the North line of said Block 45 having Coordinates of X = 2,692,350.00 and Y = 307,580.00; thence East 2,000.00 feet along the North line of said Block 45 to the point of beginning, containing approximately **708.16 acres**, all as more particularly outlined on a plat on file in the Office of Mineral Resources, Department of Natural Resources. All bearings, distances and coordinates are based on Louisiana Coordinate System of 1927, (North or South Zone).

NOTE: The above description of the Tract nominated for lease has been provided and corrected, where required, exclusively by the nomination party. Any mineral lease selected from this Tract and awarded by the Louisiana State Mineral Board shall be without warranty of any kind, either express, implied, or statutory, including, but not limited to, the implied warranties of merchantability and fitness for a particular purpose. Should the mineral lease awarded by the Louisiana State Mineral Board be subsequently modified, cancelled or abrogated due to the existence of conflicting leases, operating agreements, private claims or other future obligations or conditions which may affect all or any portion of the leased Tract, it shall not relieve the Lessee of the obligation to pay any bonus due thereon to the Louisiana State Mineral Board, nor shall the Louisiana State Mineral Board be obligated to refund any consideration paid by the Lessor prior to such modification, cancellation, or abrogation, including, but not limited to, bonuses, rentals and royalties.

NOTE: The State of Louisiana does hereby reserve, and this lease shall be subject to, the imprescriptible right of surface use in the nature of a servitude in favor of the Department of Natural Resources, including its Offices and Commissions, for the sole purpose of implementing, constructing, servicing and maintaining approved coastal zone management and/or restoration projects. Utilization of any and all rights derived under this lease by the mineral lessee, its agents, successors or assigns, shall not interfere with nor hinder the reasonable surface use by the Department of Natural Resources, its Offices or Commissions, as herein above reserved.

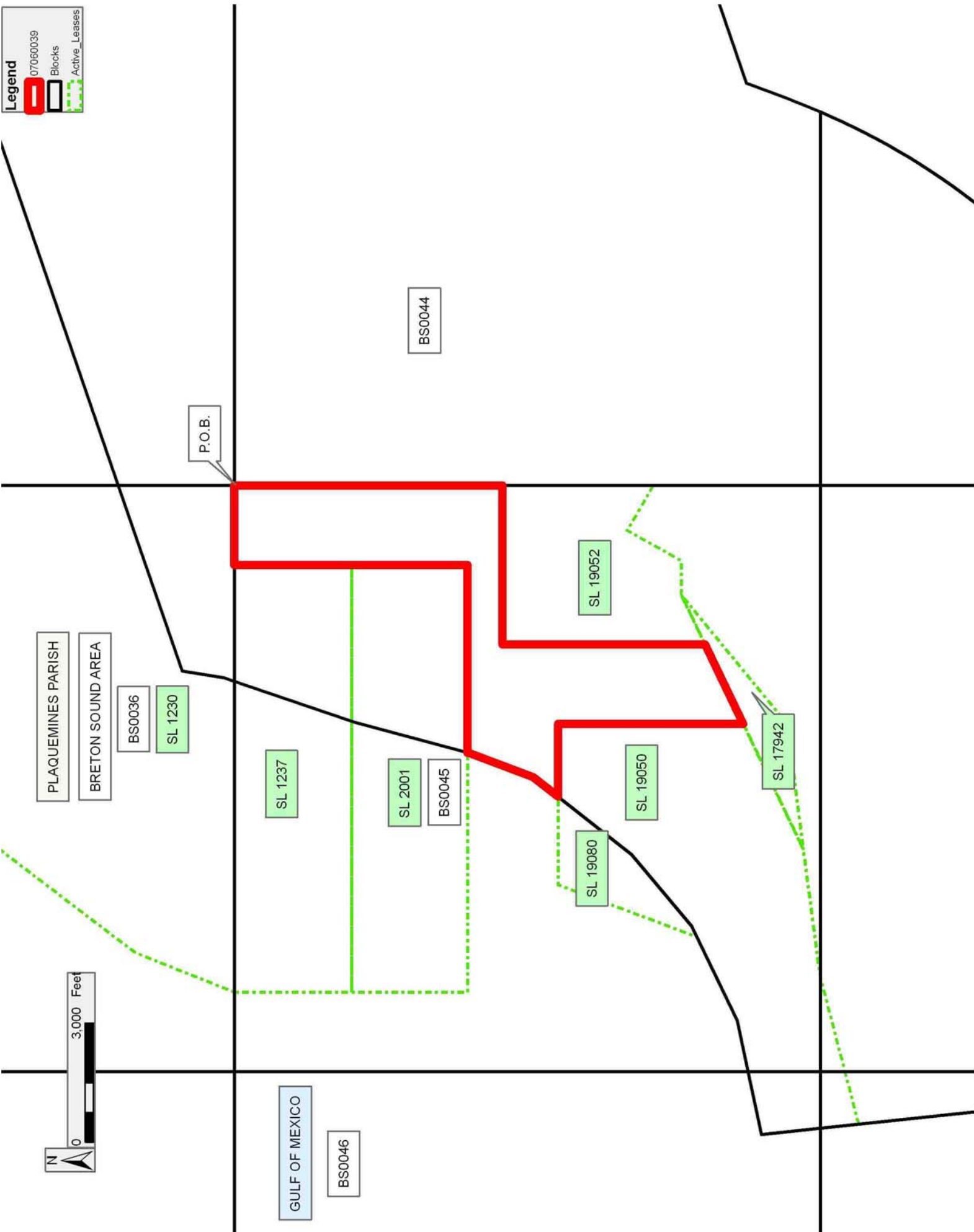
NOTE: It appears, according to our records, that a portion of this Tract is located within the restrictive safety fairway area as set out by the Corps of Engineers, U.S. Army and/or the restrictive anchorage area as set out by the U.S. Coast Guard.

Applicant: PECK ENERGY CORPORATION

Bidder	Cash Payment	Price/Acre	Rental	Oil	Gas	Other

Legend

- 07060039
- Blocks
- Active_Leases



PLAQUEMINES PARISH
BRETON SOUND AREA

BS00036
SL 1230

SL 1237

SL 2001
BS00045

SL 19080

SL 19050

SL 19052

SL 17942

BS00044

P.O.B.

GULF OF MEXICO

BS00046



TRACT 39086 - Portion of Block 44, Breton Sound Area, Plaquemines Parish, Louisiana

The beds and bottoms of all water bodies belonging to the State of Louisiana located in Block 44, Breton Sound Area, together with any present lands formed by accretion to the shoreline or islands formed therein, located in Plaquemines Parish, Louisiana, owned by and not presently under mineral lease as of June 13, 2007, from the State of Louisiana, the geographical area of which is more fully described as follows: Beginning at the Northwest corner of Block 44, Breton Sound Area having Coordinates of X = 2,694,350.00 and Y = 307,580.00; thence East 14,750.00 feet along the North line of said Block 44 to its Northeast corner having Coordinates of X = 2,709,100.00 and Y = 307,580.00; thence South 6,750.00 feet along the East line of said Block 44 to a point having Coordinates of X = 2,709,100.00 and Y = 300,830.00; thence West 14,750.00 feet to a point on the West line of said Block 44 having Coordinates of X = 2,694,350.00 and Y = 300,830.00; thence North 6,750.00 feet along the West line of said Block 44 to the point of beginning, containing approximately **2,285.64 acres**, all as more particularly outlined on a plat on file in the Office of Mineral Resources, Department of Natural Resources. All bearings, distances and coordinates are based on Louisiana Coordinate System of 1927, (North or South Zone).

NOTE: The above description of the Tract nominated for lease has been provided and corrected, where required, exclusively by the nomination party. Any mineral lease selected from this Tract and awarded by the Louisiana State Mineral Board shall be without warranty of any kind, either express, implied, or statutory, including, but not limited to, the implied warranties of merchantability and fitness for a particular purpose. Should the mineral lease awarded by the Louisiana State Mineral Board be subsequently modified, cancelled or abrogated due to the existence of conflicting leases, operating agreements, private claims or other future obligations or conditions which may affect all or any portion of the leased Tract, it shall not relieve the Lessee of the obligation to pay any bonus due thereon to the Louisiana State Mineral Board, nor shall the Louisiana State Mineral Board be obligated to refund any consideration paid by the Lessor prior to such modification, cancellation, or abrogation, including, but not limited to, bonuses, rentals and royalties.

NOTE: The State of Louisiana does hereby reserve, and this lease shall be subject to, the imprescriptible right of surface use in the nature of a servitude in favor of the Department of Natural Resources, including its Offices and Commissions, for the sole purpose of implementing, constructing, servicing and maintaining approved coastal zone management and/or restoration projects. Utilization of any and all rights derived under this lease by the mineral lessee, its agents, successors or assigns, shall not interfere with nor hinder the reasonable surface use by the Department of Natural Resources, its Offices or Commissions, as herein above reserved.

NOTE: It appears, according to our records, that a portion of this Tract is located within the restrictive safety fairway area as set out by the Corps of Engineers, U.S. Army and/or the restrictive anchorage area as set out by the U.S. Coast Guard.

Applicant: PECK ENERGY CORPORATION

Bidder	Cash Payment	Price/Acre	Rental	Oil	Gas	Other

Legend

- 07060040
- Blocks
- Active_Leases

BS0043

PLAQUEMINES PARISH

BRETON SOUND AREA

BS0037

BS0044



SL 1230

P.O.B.

BS0045

GULF OF MEXICO

SL 19052

TRACT 39087 - Portion of Block 43, Breton Sound Area, Plaquemines Parish, Louisiana

The beds and bottoms of all water bodies belonging to the State of Louisiana located in Block 43, Breton Sound Area, together with any present lands formed by accretion to the shoreline or islands formed therein, located in Plaquemines Parish, Louisiana, owned by and not presently under mineral lease as of June 13, 2007, from the State of Louisiana, the geographical area of which is more fully described as follows: Beginning at the Northwest corner of Block 43, Breton Sound Area having Coordinates of X = 2,709,100.00 and Y = 307,580.00; thence East 14,750.00 feet along the North line of said Block 43 to its Northeast corner having Coordinates of X = 2,723,850.00 and Y = 307,580.00; thence South 5,676.07 feet along the East line of said Block 43 to a point on the Three Mile Line, as decreed by the Supreme Court of the United States, as determined by a Special Master appointed therein, in litigation styled *United States v. State of Louisiana et al No. 9 Original*, in 1975, having Coordinates of X = 2,723,850.00 and Y = 301,903.93; thence Southwesterly, along said Three Mile Line, along a curve to the right having a radius of 18,240.60 feet and a radius of X = 2,713,324 and Y = 316,801 to a point having Coordinates of X = 2,722,136.14 and Y = 300,830.00; thence West 13,036.14 feet to a point on the West line of said Block 43 having Coordinates of X = 2,709,100.00 and Y = 300,830.00; thence North 6,750.00 feet along the West line of said Block 43 to the point of beginning, containing approximately **2,265.38 acres, LESS AND EXCEPT** that portion thereof, if any, lying seaward of the line three nautical miles from the coast line of Louisiana, as said three mile line has been decreed by the Supreme Court of the United States, as determined by a Special Master appointed therein, in litigation styled **United States v. State of Louisiana et al No. 9 Original**, in 1975, all as more particularly outlined on a plat in the Office of Mineral Resources, Department of Natural Resources. All bearings, distances and coordinates are based on the Louisiana Coordinate System of 1927, (South Zone).

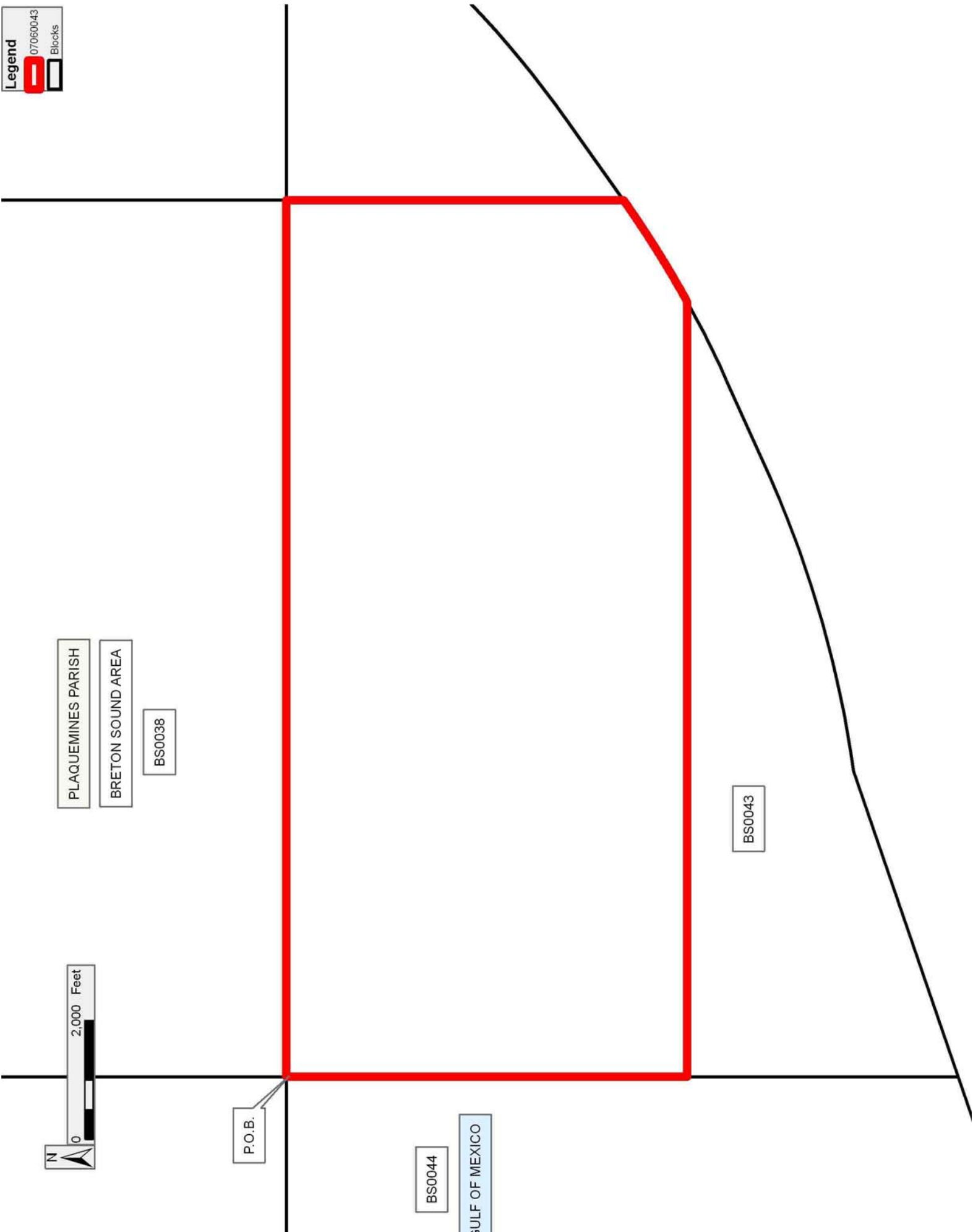
NOTE: The above description of the Tract nominated for lease has been provided and corrected, where required, exclusively by the nomination party. Any mineral lease selected from this Tract and awarded by the Louisiana State Mineral Board shall be without warranty of any kind, either express, implied, or statutory, including, but not limited to, the implied warranties of merchantability and fitness for a particular purpose. Should the mineral lease awarded by the Louisiana State Mineral Board be subsequently modified, cancelled or abrogated due to the existence of conflicting leases, operating agreements, private claims or other future obligations or conditions which may affect all or any portion of the leased Tract, it shall not relieve the Lessee of the obligation to pay any bonus due thereon to the Louisiana State Mineral Board, nor shall the Louisiana State Mineral Board be obligated to refund any consideration paid by the Lessor prior to such modification, cancellation, or abrogation, including, but not limited to, bonuses, rentals and royalties.

NOTE: The State of Louisiana does hereby reserve, and this lease shall be subject to, the imprescriptible right of surface use in the nature of a servitude in favor of the Department of Natural Resources, including its Offices and Commissions, for the sole purpose of implementing, constructing, servicing and maintaining approved coastal zone management and/or restoration projects. Utilization of any and all rights derived under this lease by the mineral lessee, its agents, successors or assigns, shall not interfere with nor hinder the reasonable surface use by the Department of Natural Resources, its Offices or Commissions, as herein above reserved.

NOTE: It appears, according to our records, that a portion of this Tract is located within the restrictive safety fairway area as set out by the Corps of Engineers, U.S. Army and/or the restrictive anchorage area as set out by the U.S. Coast Guard.

Applicant: PECK ENERGY CORPORATION

Bidder	Cash Payment	Price/Acre	Rental	Oil	Gas	Other



PLAQUEMINES PARISH

BRETON SOUND AREA

BS0038

BS0043

BS0044

GULF OF MEXICO

P.O.B.



TRACT 39088 - Portion of Block 7, Eugene Island Area, Revised, Iberia Parish, Louisiana

The beds and bottoms of all water bodies belonging to the State of Louisiana located in Block 7, Eugene Island Area, Revised, together with any present lands formed by accretion to the shoreline or islands formed therein, located in Iberia Parish, Louisiana, owned by and not presently under mineral lease as of June 13, 2007, from the State of Louisiana, the geographical area of which is more fully described as follows: Beginning at the Northeast corner of State Lease No. 19265, also being a point within Block 7, Eugene Island Area, Revised, also being a point on the Louisiana Coastline, as decreed by the Supreme Court of the United States, as determined by a Special Master appointed therein, in litigation styled *United States v. State of Louisiana et al No. 9 Original*, in 1975, having Coordinates of X = 1,852,714.00 and Y = 276,406.43; thence Northeasterly on a straight line, along said Louisiana Coastline, to the Northeast corner of State Lease No. 19259 having Coordinates of X = 1,861,009.00 and Y = 276,849.96; thence South 1,516.04 feet along the West boundary of said State Lease No. 19259 to its Southwest corner, also being a point on the boundary of State Lease No. 19154 having Coordinates of X = 1,861,009.00 and Y = 275,333.92; thence along the boundary of said State Lease No. 19154 the following courses: South 61 degrees 13 minutes 18 seconds West 1,139.23 feet; South 39 degrees 20 minutes 26 seconds West 4,756.99 feet and North 87 degrees 06 minutes 15 seconds East 359.85 feet to the Northwest corner of State Lease No. 19262 having Coordinates of X = 1,857,354.28 and Y = 271,124.63; thence South 46 degrees 18 minutes 36 seconds West 1,783.63 feet along the West boundary of said State Lease No. 19262 to its Southwest corner, also being a point on the South line of said Block 7, having Coordinates of X = 1,856,064.56 and Y = 269,892.58; thence West 2,286.16 feet along the South line of said Block 7 to the Southeast corner of State Lease No. 17695 having Coordinates of X = 1,853,778.40 and Y = 269,892.58; thence North 1,838.42 feet along the East boundary of said State Lease No. 17695 to the Southwest corner of State Lease No. 19264 having Coordinates of X = 1,853,778.40 and Y = 271,731.00; thence along the boundary of said State Lease No. 19264 the following courses: East 2,289.60 feet; North 3,750.00 feet; West 2,289.60 feet and South 2,188.42 feet to the Northeast corner of said State Lease No. 17695 having Coordinates of X = 1,853,778.40 and Y = 273,292.58; thence West 1,064.40 feet along the North boundary of said State Lease No. 17695 to the Easternmost Southeast corner of said State Lease No. 19265 having Coordinates of X = 1,852,714.00 and Y = 273,292.58; thence North 3,113.85 feet along the East boundary of said State Lease No. 19265 to the point of beginning, containing approximately **664.48 acres**, all as more particularly outlined on a plat on file in the Office of Mineral Resources, Department of Natural Resources. All bearings, distances and coordinates are based on Louisiana Coordinate System of 1927, (North or South Zone).

NOTE: The above description of the Tract nominated for lease has been provided and corrected, where required, exclusively by the nomination party. Any mineral lease selected from this Tract and awarded by the

Louisiana State Mineral Board shall be without warranty of any kind, either express, implied, or statutory, including, but not limited to, the implied warranties of merchantability and fitness for a particular purpose. Should the mineral lease awarded by the Louisiana State Mineral Board be subsequently modified, cancelled or abrogated due to the existence of conflicting leases, operating agreements, private claims or other future obligations or conditions which may affect all or any portion of the leased Tract, it shall not relieve the Lessee of the obligation to pay any bonus due thereon to the Louisiana State Mineral Board, nor shall the Louisiana State Mineral Board be obligated to refund any consideration paid by the Lessor prior to such modification, cancellation, or abrogation, including, but not limited to, bonuses, rentals and royalties.

NOTE: The Office of Mineral Resources will require a minimum bonus of \$300 per acre and a minimum royalty of 25%.

NOTE: The State of Louisiana does hereby reserve, and this lease shall be subject to, the imprescriptible right of surface use in the nature of a servitude in favor of the Department of Natural Resources, including its Offices and Commissions, for the sole purpose of implementing, constructing, servicing and maintaining approved coastal zone management and/or restoration projects. Utilization of any and all rights derived under this lease by the mineral lessee, its agents, successors or assigns, shall not interfere with nor hinder the reasonable surface use by the Department of Natural Resources, its Offices or Commissions, as herein above reserved.

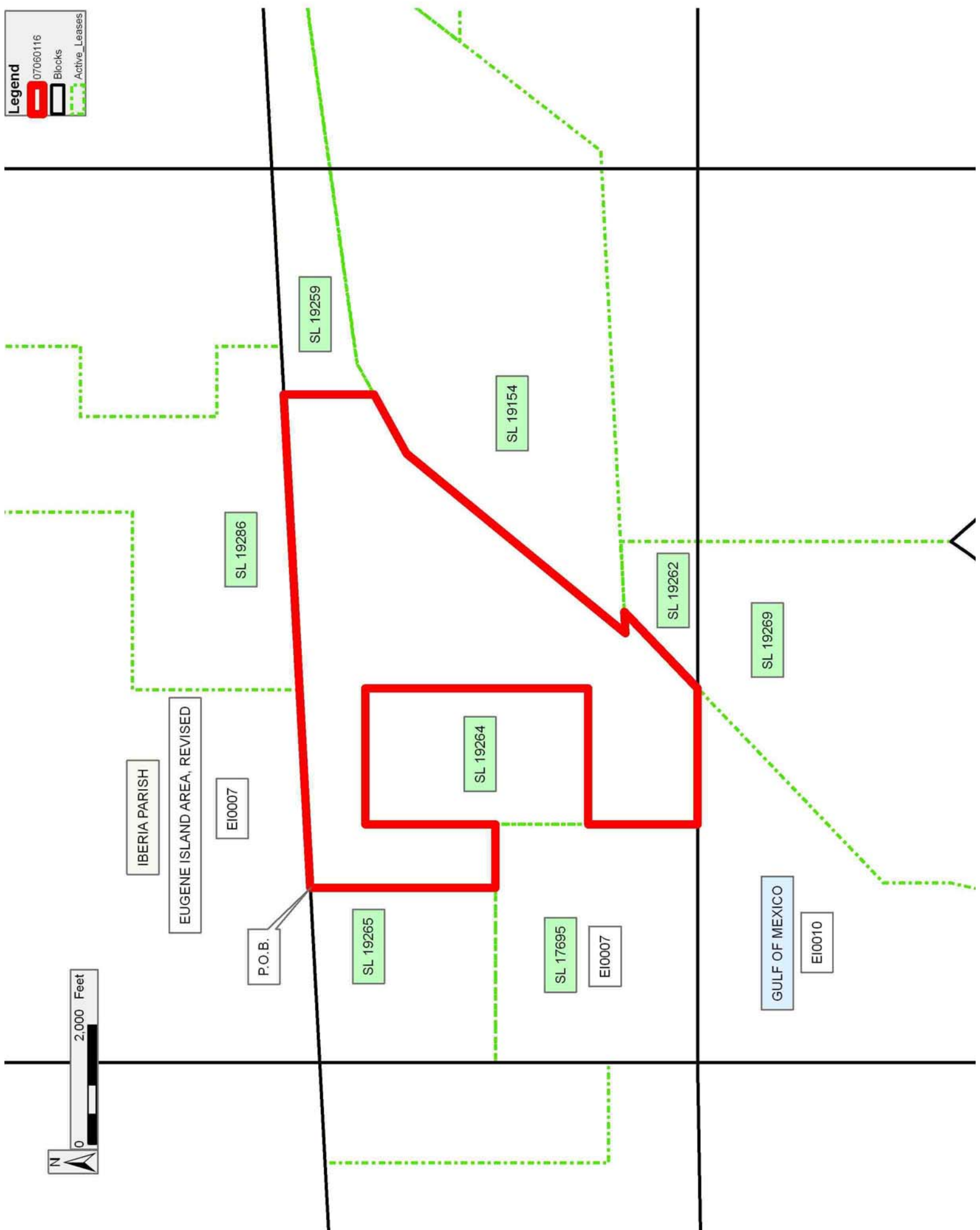
NOTE: The Department of Wildlife and Fisheries has designated certain areas in the coastal waters of the State of Louisiana as Oyster Seed Bed Areas. The exact location of those Seed Bed Areas must be obtained from the Department of Wildlife and Fisheries and any work done under a mineral lease from the State of Louisiana may necessarily be conducted in conformity with the rules and regulations promulgated by the said Department of Wildlife and Fisheries for Oyster Seed Bed Areas.

Applicant: AUDUBON OIL AND GAS CORPORATION

Bidder	Cash Payment	Price/Acre	Rental	Oil	Gas	Other

Legend

- 07060116
- Blocks
- Active_Leases



TRACT 39089 - Portion of Block 6, Eugene Island Area, Revised, Iberia Parish, Louisiana

The beds and bottoms of all water bodies belonging to the State of Louisiana located in Block 6, Eugene Island Area, Revised, together with any present lands formed by accretion to the shoreline or islands formed therein, located in Iberia Parish, Louisiana, owned by and not presently under mineral lease as of June 13, 2007, from the State of Louisiana, the geographical area of which is more fully described as follows: Beginning at a point within Block 6, Eugene Island Area, Revised, also being a point on the Louisiana Coastline, as decreed by the Supreme Court of the United States, as determined by a Special Master appointed therein, in litigation styled *United States v. State of Louisiana et al No. 9 Original*, in 1975, having Coordinates of X = 1,872,418 and Y = 277,460; thence Southeasterly on a straight line, along said Louisiana Coastline, to a point on the East line of said Block 6, having Coordinates of X = 1,879,822.72 and Y = 272,315.34; thence South 2,422.76 feet along the East line of said Block 6 to its Southeast corner having Coordinates of X = 1,879,822.72 and Y = 269,892.58; thence West 1,247.27 feet along the South line of said Block 6 to a point on East boundary of State Lease No. 19298 having Coordinates of X = 1,878,575.45 and Y = 269,892.58; thence along the boundary of said State Lease No. 19298 the following courses: North 1,949.80 feet and West 3,006.35 feet to a point on the East boundary of State Lease No. 18860 having Coordinates of X = 1,875,569.10 and Y = 271,842.38; thence along the boundary of said State Lease No. 18860 the following courses: North 2,050.20 feet and West 3,760.10 feet to the Southeast corner of State Lease No. 19260 having Coordinates of X = 1,871,809.00 and Y = 273,892.58; thence North 3,534.86 feet along the East boundary of said State Lease No. 19260 to its Northeast corner, also being a point on said Louisiana Coastline having Coordinates of X = 1,871,809.00 and Y = 277,427.44; thence Northeasterly on a straight line, along said Louisiana Coastline, to the point of beginning, containing approximately **474.83 acres**, all as more particularly outlined on a plat on file in the Office of Mineral Resources, Department of Natural Resources. All bearings, distances and coordinates are based on Louisiana Coordinate System of 1927, (North or South Zone).

NOTE: The above description of the Tract nominated for lease has been provided and corrected, where required, exclusively by the nomination party. Any mineral lease selected from this Tract and awarded by the Louisiana State Mineral Board shall be without warranty of any kind, either express, implied, or statutory, including, but not limited to, the implied warranties of merchantability and fitness for a particular purpose. Should the mineral lease awarded by the Louisiana State Mineral Board be subsequently modified, cancelled or abrogated due to the existence of conflicting leases, operating agreements, private claims or other future obligations or conditions which may affect all or any portion of the leased Tract, it shall not relieve the Lessee of the obligation to pay any bonus due thereon to the Louisiana State Mineral Board, nor shall the Louisiana State Mineral Board be obligated to refund any consideration

paid by the Lessor prior to such modification, cancellation, or abrogation, including, but not limited to, bonuses, rentals and royalties.

NOTE: The Office of Mineral Resources will require a minimum bonus of \$300 per acre and a minimum royalty of 25%.




NOTE: The State of Louisiana does hereby reserve, and this lease shall be subject to, the imprescriptible right of surface use in the nature of a servitude in favor of the Department of Natural Resources, including its Offices and Commissions, for the sole purpose of implementing, constructing, servicing and maintaining approved coastal zone management and/or restoration projects. Utilization of any and all rights derived under this lease by the mineral lessee, its agents, successors or assigns, shall not interfere with nor hinder the reasonable surface use by the Department of Natural Resources, its Offices or Commissions, as herein above reserved.

NOTE: The Department of Wildlife and Fisheries has designated certain areas in the coastal waters of the State of Louisiana as Oyster Seed Bed Areas. The exact location of those Seed Bed Areas must be obtained from the Department of Wildlife and Fisheries and any work done under a mineral lease from the State of Louisiana may necessarily be conducted in conformity with the rules and regulations promulgated by the said Department of Wildlife and Fisheries for Oyster Seed Bed Areas.

Applicant: AUDUBON OIL AND GAS CORPORATION

Bidder	Cash Payment	Price/Acre	Rental	Oil	Gas	Other

Legend

-  07060117
-  Blocks
-  Active_Leases



IBERIA PARISH

EUGENE ISLAND AREA, REVISED

GULF OF MEXICO

P.O.B.

EI0005

EI0006

EI0005

SL 19260

SL 18860

SL 19298

EI0006

TRACT 39090 - Portion of Block 8, Eugene Island Area, Revised, Iberia Parish, Louisiana

The beds and bottoms of all water bodies belonging to the State of Louisiana located in Block 8, Eugene Island Area, Revised, together with any present lands formed by accretion to the shoreline or islands formed therein, located in Iberia Parish, Louisiana, owned by and not presently under mineral lease as of June 13, 2007, from the State of Louisiana, the geographical area of which is more fully described as follows: Beginning at the Northeast corner of State Lease No. 19263, also being a point within Block 8, Eugene Island Area, Revised, also being a point on the Louisiana Coastline, as decreed by the Supreme Court of the United States, as determined by a Special Master appointed therein, in litigation styled *United States v. State of Louisiana et al No. 9 Original*, in 1975, having Coordinates of X = 1,845,260.24 and Y = 276,007.88; thence Northeasterly on a straight line, along said Louisiana Coastline, to the Northwest corner of State Lease No. 19265 having Coordinates of X = 1,848,093.02 and Y = 276,159.35; thence South 4,767.83 feet along the West boundary of said State Lease No. 19265 to its Southwest corner, also being a point on the boundary of State Lease No. 19152 having Coordinates of X = 1,848,093.02 and Y = 271,391.52; thence West 2,832.78 feet along the boundary of said State Lease No. 19152 to the Southeast corner of said State Lease No. 19263 having Coordinates of X = 1,845,260.24 and Y = 271,391.52; thence North 4,616.36 feet along the East boundary of said State Lease No. 19263 to the point of beginning, containing approximately **305.14 acres**, all as more particularly outlined on a plat on file in the Office of Mineral Resources, Department of Natural Resources. All bearings, distances and coordinates are based on Louisiana Coordinate System of 1927, (North or South Zone).

NOTE: The above description of the Tract nominated for lease has been provided and corrected, where required, exclusively by the nomination party. Any mineral lease selected from this Tract and awarded by the Louisiana State Mineral Board shall be without warranty of any kind, either express, implied, or statutory, including, but not limited to, the implied warranties of merchantability and fitness for a particular purpose. Should the mineral lease awarded by the Louisiana State Mineral Board be subsequently modified, cancelled or abrogated due to the existence of conflicting leases, operating agreements, private claims or other future obligations or conditions which may affect all or any portion of the leased Tract, it shall not relieve the Lessee of the obligation to pay any bonus due thereon to the Louisiana State Mineral Board, nor shall the Louisiana State Mineral Board be obligated to refund any consideration paid by the Lessor prior to such modification, cancellation, or abrogation, including, but not limited to, bonuses, rentals and royalties.

NOTE: The Office of Mineral Resources will require a minimum bonus of \$300 per acre and a minimum royalty of 25%.




NOTE: The State of Louisiana does hereby reserve, and this lease shall be subject to, the imprescriptible right of surface use in the nature of a servitude in favor of the Department of Natural Resources, including its Offices and Commissions, for the sole purpose of implementing, constructing, servicing and maintaining approved coastal zone management and/or restoration projects. Utilization of any and all rights derived under this lease by the mineral lessee, its agents, successors or assigns, shall not interfere with nor hinder the reasonable surface use by the Department of Natural Resources, its Offices or Commissions, as herein above reserved.

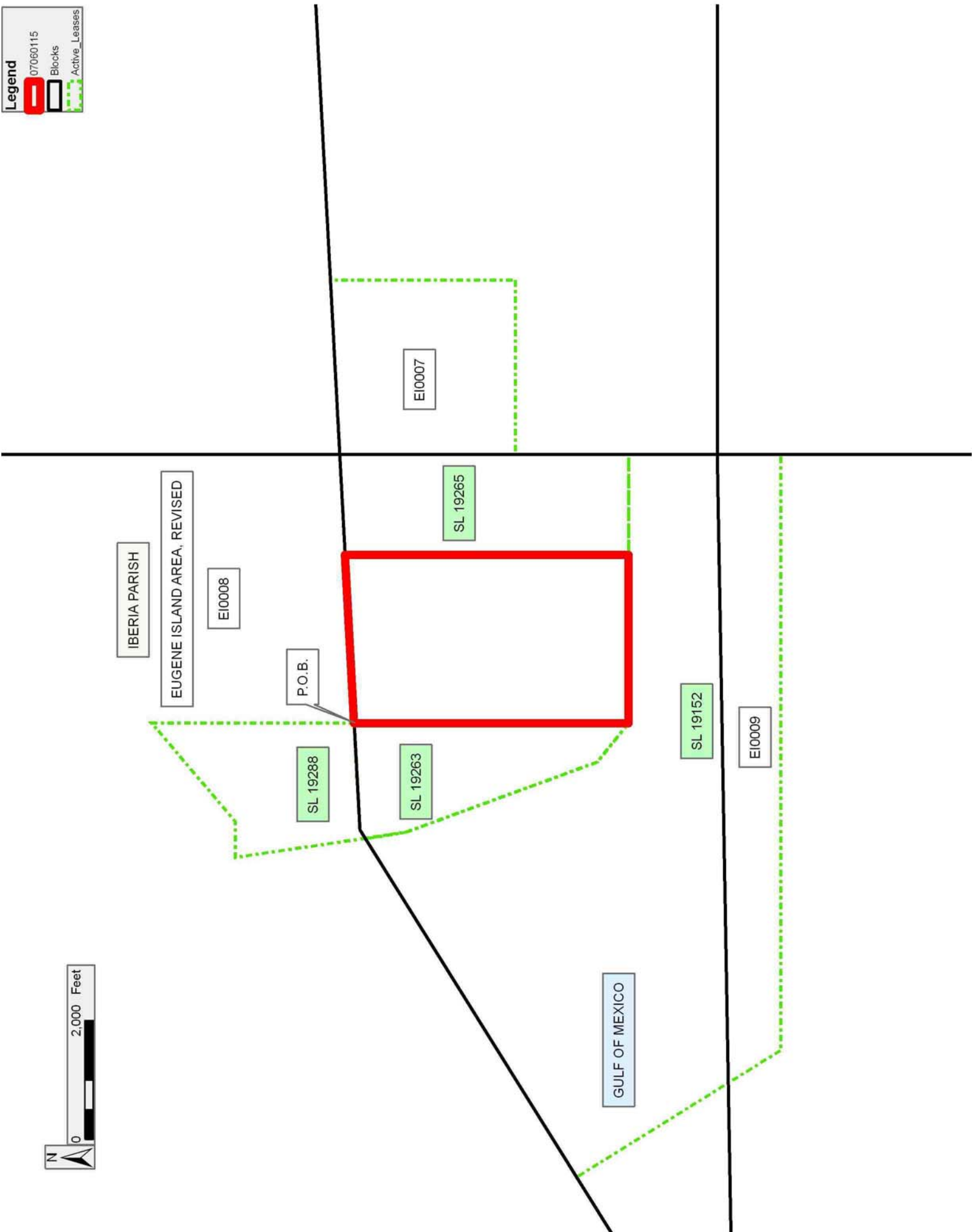
NOTE: The Department of Wildlife and Fisheries has designated certain areas in the coastal waters of the State of Louisiana as Oyster Seed Bed Areas. The exact location of those Seed Bed Areas must be obtained from the Department of Wildlife and Fisheries and any work done under a mineral lease from the State of Louisiana may necessarily be conducted in conformity with the rules and regulations promulgated by the said Department of Wildlife and Fisheries for Oyster Seed Bed Areas.

Applicant: AUDUBON OIL AND GAS CORPORATION

Bidder	Cash Payment	Price/Acre	Rental	Oil	Gas	Other

Legend

-  07060115
-  Blocks
-  Active_Leases



TRACT 39091 - Portion of Block 10, Eugene Island Area, Revised, Iberia Parish, Louisiana

The beds and bottoms of all water bodies belonging to the State of Louisiana located in Block 10, Eugene Island Area, Revised, together with any present lands formed by accretion to the shoreline or islands formed therein, located in Iberia Parish, Louisiana, owned by and not presently under mineral lease as of June 13, 2007, from the State of Louisiana, the geographical area of which is more fully described as follows: Beginning at Northwest corner of Block 10, Eugene Island Area, Revised, having Coordinates of X = 1,849,778.40 and Y = 269,892.58; thence East 6,286.16 feet along the North line of said Block 10 to the Northwest corner of State Lease No. 19269 having Coordinates of X = 1,856,064.56 and Y = 269,892.58; thence along the boundary of said State Lease No. 19269 the following courses: South 46 degrees 17 minutes 32 seconds West 4,514.71 feet, South 1,143.00 feet and South 13 degrees 20 minutes 10 seconds West 6,344.25 feet to a point on the Three Mile Line, as decreed by the Supreme Court of the United States, as determined by a Special Master appointed therein, in litigation styled *United States v. State of Louisiana et al No. 9 Original*, in 1975, having Coordinates of X = 1,851,337.62 and Y = 259,456.83; thence Southwesterly, along said Three Mile Line, along an arc to the right having a radius of 18,240.60 feet and a center at X = 1,843,467 and Y = 275,912 to a point on the West line of said Block 10 having Coordinates of X = 1,849,778.40 and Y = 258,798.18; thence North 11,094.40 feet along the West line of said Block 10 to the point of beginning, containing approximately **749.60 acres, LESS AND EXCEPT** that portion thereof, if any, lying seaward of the line three nautical miles from the coast line of Louisiana, as said three mile line has been decreed by the Supreme Court of the United States, as determined by a Special Master appointed therein, in litigation styled **United States v. State of Louisiana et al No. 9 Original**, in 1975, all as more particularly outlined on a plat in the Office of Mineral Resources, Department of Natural Resources. All bearings, distances and coordinates are based on the Louisiana Coordinate System of 1927, (South Zone).

NOTE: The above description of the Tract nominated for lease has been provided and corrected, where required, exclusively by the nomination party. Any mineral lease selected from this Tract and awarded by the Louisiana State Mineral Board shall be without warranty of any kind, either express, implied, or statutory, including, but not limited to, the implied warranties of merchantability and fitness for a particular purpose. Should the mineral lease awarded by the Louisiana State Mineral Board be subsequently modified, cancelled or abrogated due to the existence of conflicting leases, operating agreements, private claims or other future obligations or conditions which may affect all or any portion of the leased Tract, it shall not relieve the Lessee of the obligation to pay any bonus due thereon to the Louisiana State Mineral Board, nor shall the Louisiana State Mineral Board be obligated to refund any consideration paid by the Lessor prior to such modification, cancellation, or abrogation, including, but not limited to, bonuses, rentals and royalties.

NOTE: The Office of Mineral Resources will require a minimum bonus of \$300 per acre and a minimum royalty of 25%.

NOTE: The State of Louisiana does hereby reserve, and this lease shall be subject to, the imprescriptible right of surface use in the nature of a servitude in favor of the Department of Natural Resources, including its Offices and Commissions, for the sole purpose of implementing, constructing, servicing and maintaining approved coastal zone management and/or restoration projects. Utilization of any and all rights derived under this lease by the mineral lessee, its agents, successors or assigns, shall not interfere with nor hinder the reasonable surface use by the Department of Natural Resources, its Offices or Commissions, as herein above reserved.

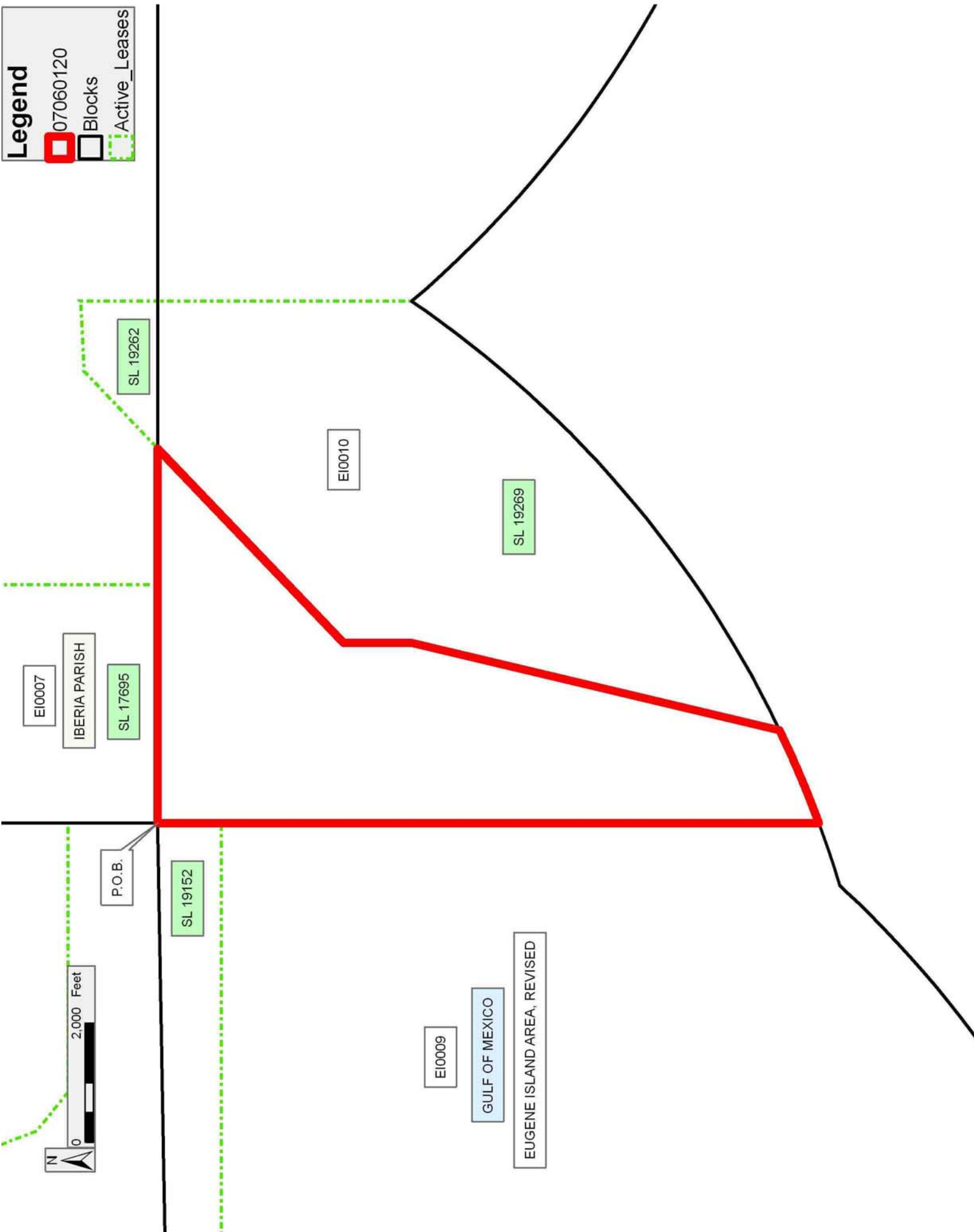
NOTE: The Department of Wildlife and Fisheries has designated certain areas in the coastal waters of the State of Louisiana as Oyster Seed Bed Areas. The exact location of those Seed Bed Areas must be obtained from the Department of Wildlife and Fisheries and any work done under a mineral lease from the State of Louisiana may necessarily be conducted in conformity with the rules and regulations promulgated by the said Department of Wildlife and Fisheries for Oyster Seed Bed Areas.

Applicant: AUDUBON OIL AND GAS CORPORATION

Bidder	Cash Payment	Price/Acre	Rental	Oil	Gas	Other

Legend

- 07060120
- Blocks
- Active_Leases



TRACT 39092 - Portion of Block 11, Eugene Island Area, Revised, Iberia Parish, Louisiana

The beds and bottoms of all water bodies belonging to the State of Louisiana located in Block 11, Eugene Island Area, Revised, together with any present lands formed by accretion to the shoreline or islands formed therein, located in Iberia Parish, Louisiana, owned by and not presently under mineral lease as of June 13, 2007, from the State of Louisiana, the geographical area of which is more fully described as follows: Beginning at a point within Block 11, Eugene Island Area, Revised, also being a point on the South boundary of State Lease No. 19266 having Coordinates of X = 1,872,311.64 and Y = 268,392.58; thence East 757.46 feet along the South boundary of said State Lease No. 19261 to its Easternmost Southeast corner, also being the Southernmost Northwest corner of State Lease No. 19298 having Coordinates of X = 1,873,069.10 and Y = 268,392.58; thence along the boundary of said State Lease No. 19298 the following courses: South 316.50 feet; East 5,506.35 feet and North 1,816.50 feet to a point on the North line of said Block 11 having Coordinates of X = 1,878,575.45 and Y = 269,892.58; thence East 1,247.27 feet along the North line of said Block 11 to its Northeast corner having Coordinates of X = 1,879,822.72 and Y = 269,892.58; thence South 14,498.58 feet along the East line of said Block 11 to its Southeast corner having Coordinates of X = 1,879,822.72 and Y = 255,394.00; thence West 7,511.08 feet along the South line of said Block 11 to a point having Coordinates of X = 1,872,311.64 and Y = 255,394.00; thence North 12,998.58 feet to the point of beginning, containing approximately **2,244.30 acres, LESS AND EXCEPT** that portion thereof, if any, lying seaward of the line three nautical miles from the coast line of Louisiana, as said three mile line has been decreed by the Supreme Court of the United States, as determined by a Special Master appointed therein, in litigation styled **United States v. State of Louisiana et al No. 9 Original**, in 1975, all as more particularly outlined on a plat in the Office of Mineral Resources, Department of Natural Resources. All bearings, distances and coordinates are based on the Louisiana Coordinate System of 1927, (South Zone).

NOTE: The above description of the Tract nominated for lease has been provided and corrected, where required, exclusively by the nomination party. Any mineral lease selected from this Tract and awarded by the Louisiana State Mineral Board shall be without warranty of any kind, either express, implied, or statutory, including, but not limited to, the implied warranties of merchantability and fitness for a particular purpose. Should the mineral lease awarded by the Louisiana State Mineral Board be subsequently modified, cancelled or abrogated due to the existence of conflicting leases, operating agreements, private claims or other future obligations or conditions which may affect all or any portion of the leased Tract, it shall not relieve the Lessee of the obligation to pay any bonus due thereon to the Louisiana State Mineral Board, nor shall the Louisiana State Mineral Board be obligated to refund any consideration paid by the Lessor prior to such modification, cancellation, or abrogation, including, but not limited to, bonuses, rentals and royalties.

NOTE: The Office of Mineral Resources will require a minimum bonus of \$300 per acre and a minimum royalty of 25%.

NOTE: The State of Louisiana does hereby reserve, and this lease shall be subject to, the imprescriptible right of surface use in the nature of a servitude in favor of the Department of Natural Resources, including its Offices and Commissions, for the sole purpose of implementing, constructing, servicing and maintaining approved coastal zone management and/or restoration projects. Utilization of any and all rights derived under this lease by the mineral lessee, its agents, successors or assigns, shall not interfere with nor hinder the reasonable surface use by the Department of Natural Resources, its Offices or Commissions, as herein above reserved.

NOTE: The Department of Wildlife and Fisheries has designated certain areas in the coastal waters of the State of Louisiana as Oyster Seed Bed Areas. The exact location of those Seed Bed Areas must be obtained from the Department of Wildlife and Fisheries and any work done under a mineral lease from the State of Louisiana may necessarily be conducted in conformity with the rules and regulations promulgated by the said Department of Wildlife and Fisheries for Oyster Seed Bed Areas.

Applicant: AUDUBON OIL AND GAS CORPORATION

Bidder	Cash Payment	Price/Acre	Rental	Oil	Gas	Other

Legend

07060123



Blocks



Active_Leases



IBERIA PARISH

EI0012

SL 19298

SL 19261

SL 19266

P.O.B.

EI0011

EUGENE ISLAND AREA, REVISED

GULF OF MEXICO

