

**STATE
AGENCY
TRACTS**

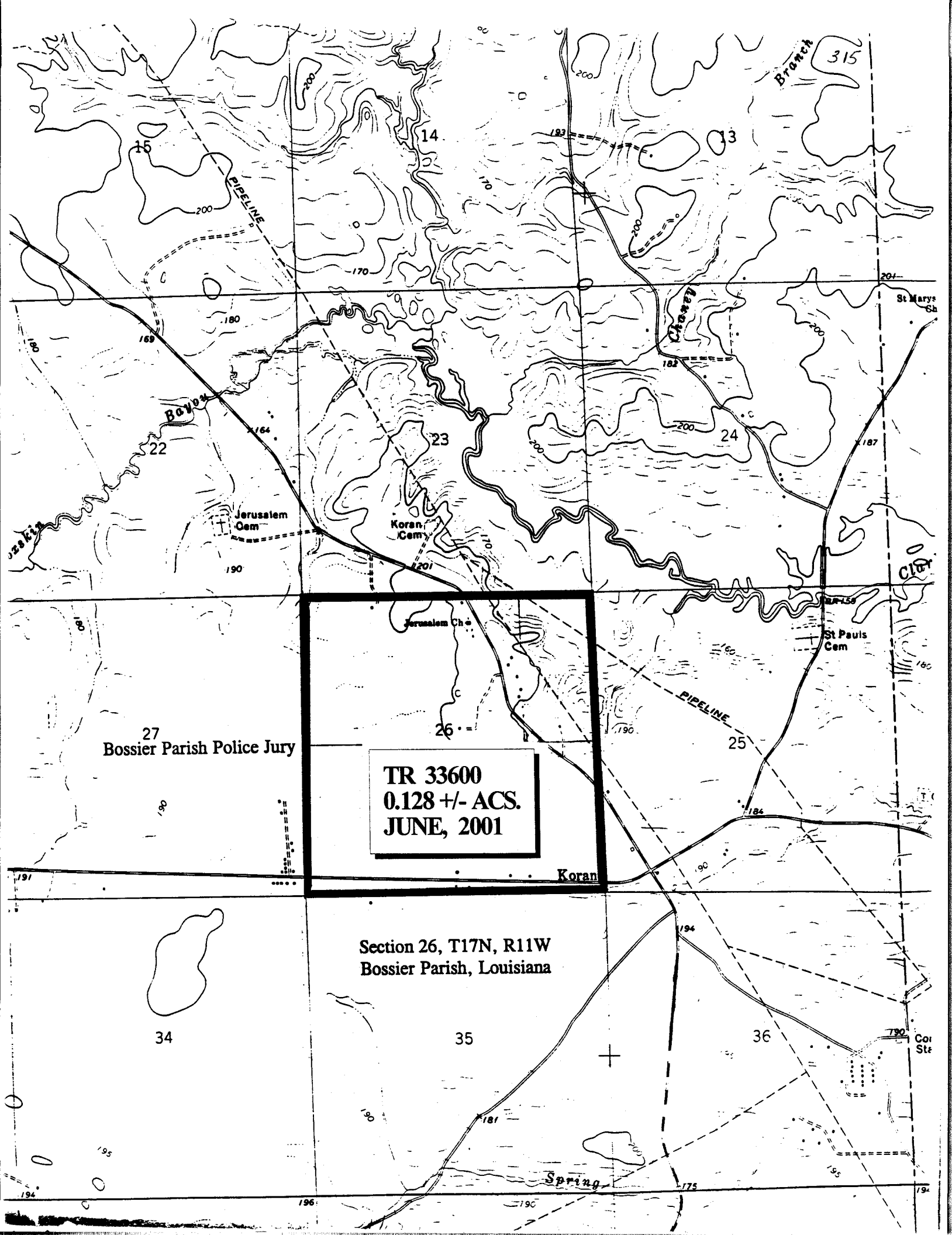
TRACT 33600 - STATE AGENCY - Bossier Parish, Louisiana

A certain tract of land belonging to and not under mineral lease from the Bossier Parish Police Jury, on June 13, 2001, being more fully described as follows: All of the Bossier Parish Police Jury's right, title and interest in and to all streets and roads lying within the boundaries of Section 26, Township 17 North, Range 11 West, Bossier Parish, Louisiana, excluding beds and bottoms of all navigable waters, containing approximately 0.128 acres, as shown outlined in red on a plat on file in the Office of Mineral Resources, Department of Natural Resources, as provided by the applciant. All bearings, distances and coordinates are based on Louisiana Coordinate System of 1927 (South Zone).

NOTE: The boundary description and plat for this tract as shown and as advertised were supplied by the nominating party and have not been checked for accuracy by the staff of the Office of Mineral Resources. Anything which may affect the acreage, the shape or the location of the tract, such as non-closure of or incorrect X, Y coordinates or title disputed acreage, or which may affect the status of the tract for leasing, such as overlap of prior leases or nominated tracts, or which may affect potential operations on leases taken, such as inclusion in areas under the jurisdiction of the Department of Wildlife and Fisheries, will not be specifically determined unless and until a bid on this tract is accepted by the Mineral Board; which bid will be accepted on a per acre basis and which acceptance will be conditional upon such specific determinations being made. Once a bid is conditionally accepted by the Mineral Board, the staff will, within a period following the date of the lease sale, determine the acreage, shape and location of the potential lease area of the tract, the status for leasing of all or any portion thereof, and any conditions which may affect potential operations thereon. These determinations may render all or a portion of the bid area unleaseable or may increase or decrease the State claimed acreage such that the total bonus/rental ultimately required may either exceed the bonus/rental paid at the lease sale, which will require additional payment by the successful bidder, or allow the successful bidder a refund of excessive payment. The successful bidder will be notified of the determinations by the staff and given an opportunity to view the bid area acreage, configuration and location as it has been specifically determined. If all or a portion of the bid area is unleaseable due to overlap of an existing lease, the successful bidder will be given an opportunity to accept or reject a new lease on that portion of the bid area which is not unleaseable. If rejected, the bid and all monies accompanying the bid will be returned to the successful bidder and no lease will be issued. In all other cases a new lease will be issued and any additional per acre bonus/rental, 10% administration fee or \$10 and \$5 per acre fees due as a result of staff determination of more State acreage in the bid area than determined by the successful bidder will be paid prior to the lease being issued. A determination of less State acreage in the bid area will result in a return to the successful bidder of any overpayment.

Applicant: Elm Grove Efforts to Agency and by Resolution of the Bossier Parish Police Jury authorizing the Mineral Board to act in its behalf.

Bidder	Cash Payment	Price / Acre	Rental	Oil	Gas	Other



27
Bossier Parish Police Jury

TR 33600
0.128 +/- ACS.
JUNE, 2001

Section 26, T17N, R11W
Bossier Parish, Louisiana

TRACT 33601 - STATE AGENCY - Bossier Parish, Louisiana

A certain tract of land belonging to and not under mineral lease from the Bossier Parish Police Jury, on June 13, 2001, being more fully described as follows: All of the Bossier Parish Police Jury's right, title and interest in and to all streets and roads lying within the boundaries of Section 1, Township 16 North, Range 11 West, Bossier Parish, Louisiana, excluding beds and bottoms of all navigable waters, containing approximately **2.404 acres**, as shown outlined in red on a plat on file in the Office of Mineral Resources, Department of Natural Resources, as provided by the applicant. All bearings, distances and coordinates are based on Louisiana Coordinate System of 1927 (South Zone).

NOTE: The boundary description and plat for this tract as shown and as advertised were supplied by the nominating party and have not been checked for accuracy by the staff of the Office of Mineral Resources. Anything which may affect the acreage, the shape or the location of the tract, such as non-closure of or incorrect X, Y coordinates or title disputed acreage, or which may affect the status of the tract for leasing, such as overlap of prior leases or nominated tracts, or which may affect potential operations on leases taken, such as inclusion in areas under the jurisdiction of the Department of Wildlife and Fisheries, will not be specifically determined unless and until a bid on this tract is accepted by the Mineral Board; which bid will be accepted on a per acre basis and which acceptance will be conditional upon such specific determinations being made. Once a bid is conditionally accepted by the Mineral Board, the staff will, within a period following the date of the lease sale, determine the acreage, shape and location of the potential lease area of the tract, the status for leasing of all or any portion thereof, and any conditions which may affect potential operations thereon. These determinations may render all or a portion of the bid area unleaseable or may increase or decrease the State claimed acreage such that the total bonus/rental ultimately required may either exceed the bonus/rental paid at the lease sale, which will require additional payment by the successful bidder, or allow the successful bidder a refund of excessive payment. The successful bidder will be notified of the determinations by the staff and given an opportunity to view the bid area acreage, configuration and location as it has been specifically determined. If all or a portion of the bid area is unleaseable due to overlap of an existing lease, the successful bidder will be given an opportunity to accept or reject a new lease on that portion of the bid area which is not unleaseable. If rejected, the bid and all monies accompanying the bid will be returned to the successful bidder and no lease will be issued. In all other cases a new lease will be issued and any additional per acre bonus/rental, 10% administration fee or \$10 and \$5 per acre fees due as a result of staff determination of more State acreage in the bid area than determined by the successful bidder will be paid prior to the lease being issued. A determination of less State acreage in the bid area will result in a return to the successful bidder of any overpayment.

Applicant: Elm Grove Efforts to Agency and by Resolution of the Bossier Parish Police Jury authorizing the Mineral Board to act in its behalf.

Bidder	Cash Payment	Price / Acre	Rental	Oil	Gas	Other

35

36

Compressor
StationWEBSTER PARISH
BOSSIER PARISHTR 33601
2.404 +/- ACS.
JUNE, 2001Gas
WellMarshall
Cem.Fairview
Point2.4040 acres, more or less
Section 1, T16N, R11W
Bossier Parish, Louisiana

Bossier Parish Police Jury

Adam
Point

11

12

7

14

13

18

1 700 000 FEET

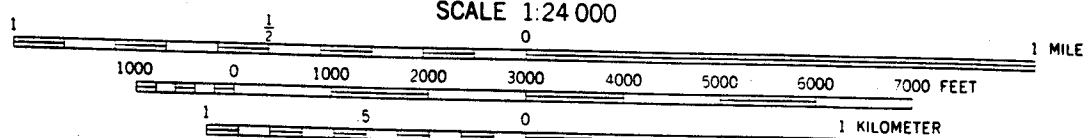
27°30' 19 MI TO LA. 154

R. 11 W 458

(BOSSIER POINT) R 10 W
7348 IV SW

460

SCALE 1:24 000

CONTOUR INTERVAL 10 FEET
DOTTED LINES REPRESENT 5-FOOT CONTOURS
DATUM IS MEAN SEA LEVEL

★ MN
GN

0°14' 4 MILS
6 1/2° 116 MILS

UTM GRID AND 1972 MAGNETIC NORTH
DECLINATION AT CENTER OF SHEET

THIS MAP COMPLIES WITH NATIONAL MAP ACCURACY STANDARDS
FOR SALE BY U. S. GEOLOGICAL SURVEY, DENVER, COLORADO 80225, OR WASHINGTON, D. C. 20242
AND BY THE STATE OF LOUISIANA, DEPARTMENT OF PUBLIC WORKS, BATON ROUGE, LOUISIANA 70804
A FOLDER DESCRIBING TOPOGRAPHIC MAPS AND SYMBOLS IS AVAILABLE ON REQUEST

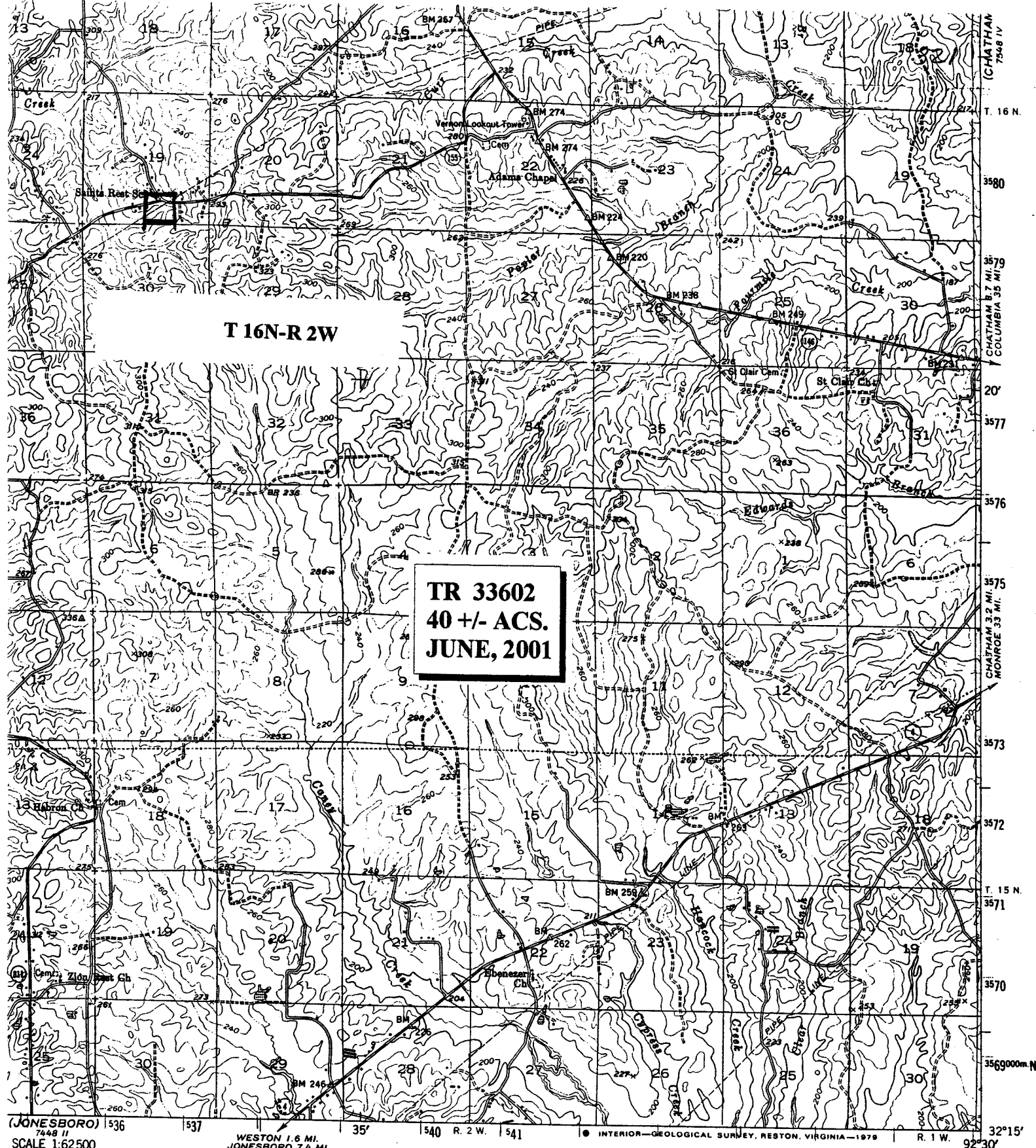
TRACT 33602 - STATE AGENCY - Jackson Parish, Louisiana

A certain tract of land belonging to and not under mineral lease from the Jackson Parish School Board, on June 13, 2001, being more fully described as follows: The Southwest Quarter of the Southeast Quarter, Section 19, Township 16 North, Range 2 West, Jackson Parish, Louisiana, excluding beds and bottoms of all navigable waters, containing approximately 40 acres, as shown outlined in red on a plat on file in the Office of Mineral Resources, Department of Natural Resources, as provided by the applicant. All bearings, distances and coordinates are based on Louisiana Coordinate System of 1927 (South Zone).

NOTE: The boundary description and plat for this tract as shown and as advertised were supplied by the nominating party and have not been checked for accuracy by the staff of the Office of Mineral Resources. Anything which may affect the acreage, the shape or the location of the tract, such as non-closure of or incorrect X, Y coordinates or title disputed acreage, or which may affect the status of the tract for leasing, such as overlap of prior leases or nominated tracts, or which may affect potential operations on leases taken, such as inclusion in areas under the jurisdiction of the Department of Wildlife and Fisheries, will not be specifically determined unless and until a bid on this tract is accepted by the Mineral Board; which bid will be accepted on a per acre basis and which acceptance will be conditional upon such specific determinations being made. Once a bid is conditionally accepted by the Mineral Board, the staff will, within a period following the date of the lease sale, determine the acreage, shape and location of the potential lease area of the tract, the status for leasing of all or any portion thereof, and any conditions which may affect potential operations thereon. These determinations may render all or a portion of the bid area unleaseable or may increase or decrease the State claimed acreage such that the total bonus/rental ultimately required may either exceed the bonus/rental paid at the lease sale, which will require additional payment by the successful bidder, or allow the successful bidder a refund of excessive payment. The successful bidder will be notified of the determinations by the staff and given an opportunity to view the bid area acreage, configuration and location as it has been specifically determined. If all or a portion of the bid area is unleaseable due to overlap of an existing lease, the successful bidder will be given an opportunity to accept or reject a new lease on that portion of the bid area which is not unleaseable. If rejected, the bid and all monies accompanying the bid will be returned to the successful bidder and no lease will be issued. In all other cases a new lease will be issued and any additional per acre bonus/rental, 10% administration fee or \$10 and \$5 per acre fees due as a result of staff determination of more State acreage in the bid area than determined by the successful bidder will be paid prior to the lease being issued. A determination of less State acreage in the bid area will result in a return to the successful bidder of any overpayment.

Applicant: Sidney R. Douglas to Agency and by Resolution of the Jackson Parish School Board authorizing the Mineral Board to act in its behalf.

Bidder	Cash Payment	Price / Acre	Rental	Oil	Gas	Other



SCALE 1:62500

WESTON 1.6 MI.
JONESBORO 7.4 MI.

UR INTERVAL 20 FEET
METRIC VERTICAL DATUM OF 1929

QUADRANGLE LOCATION

LOUISIANA

ROAD CLASSIFICATION

Heavy-duty ——— Light-duty ———
Medium-duty ——— Unimproved dirt - - - - -

U.S. Route State Route

JACKSON PARISH

HODGE, LA.

N3215-W9230/15

1953
PHOTOREVISED 1972

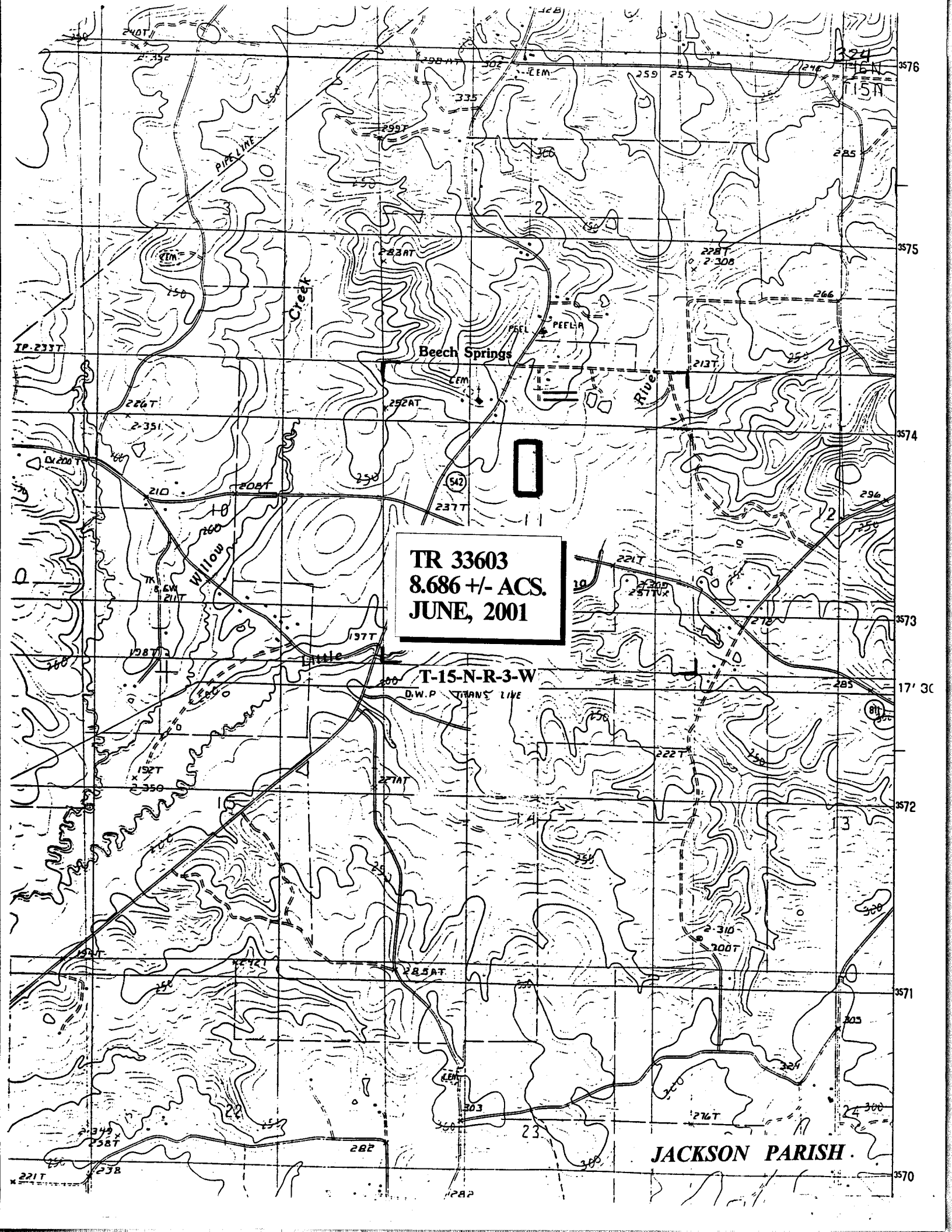
TRACT 33603 - STATE AGENCY - Jackson Parish, Louisiana

A certain tract of land belonging to and not under mineral lease from the Jackson Parish School Board, on June 13, 2001, being more fully described as follows: Beginning at the Southeast corner of the Northeast Quarter of the Northwest Quarter of Section 11, Township 15 North, Range 3 West and run South on forty line a distance of 875.8 feet; thence run West a distance of 432 feet; thence run North a distance of 875.8 feet; thence run East a distance of 432 feet to the point of beginning, being situated in the Southeast Quarter of the Northwest Quarter, Section 11, Township 15 North, Range 3 West, excluding beds and bottoms of all navigable waters, containing approximately 8.686 acres, as shown outlined in red on a plat on file in the Office of Mineral Resources, Department of Natural Resources, as provided by the applicant. All bearings, distances and coordinates are based on Louisiana Coordinate System of 1927 (South Zone).

NOTE: The boundary description and plat for this tract as shown and as advertised were supplied by the nominating party and have not been checked for accuracy by the staff of the Office of Mineral Resources. Anything which may affect the acreage, the shape or the location of the tract, such as non-closure of or incorrect X, Y coordinates or title disputed acreage, or which may affect the status of the tract for leasing, such as overlap of prior leases or nominated tracts, or which may affect potential operations on leases taken, such as inclusion in areas under the jurisdiction of the Department of Wildlife and Fisheries, will not be specifically determined unless and until a bid on this tract is accepted by the Mineral Board; which bid will be accepted on a per acre basis and which acceptance will be conditional upon such specific determinations being made. Once a bid is conditionally accepted by the Mineral Board, the staff will, within a period following the date of the lease sale, determine the acreage, shape and location of the potential lease area of the tract, the status for leasing of all or any portion thereof, and any conditions which may affect potential operations thereon. These determinations may render all or a portion of the bid area unleaseable or may increase or decrease the State claimed acreage such that the total bonus/rental ultimately required may either exceed the bonus/rental paid at the lease sale, which will require additional payment by the successful bidder, or allow the successful bidder a refund of excessive payment. The successful bidder will be notified of the determinations by the staff and given an opportunity to view the bid area acreage, configuration and location as it has been specifically determined. If all or a portion of the bid area is unleaseable due to overlap of an existing lease, the successful bidder will be given an opportunity to accept or reject a new lease on that portion of the bid area which is not unleaseable. If rejected, the bid and all monies accompanying the bid will be returned to the successful bidder and no lease will be issued. In all other cases a new lease will be issued and any additional per acre bonus/rental, 10% administration fee or \$10 and \$5 per acre fees due as a result of staff determination of more State acreage in the bid area than determined by the successful bidder will be paid prior to the lease being issued. A determination of less State acreage in the bid area will result in a return to the successful bidder of any overpayment.

Applicant: Sklar Exploration Company, LLC to Agency and by Resolution of the Jackson Parish School Board authorizing the Mineral Board to act in its behalf.

Bidder	Cash Payment	Price / Acre	Rental	Oil	Gas	Other



TR 33603
8.686 +/- ACS.
JUNE, 2001

T-15-N-R-3-W

D.W.P. TITANS LIVE

JACKSON PARISH.

TRACT 33604 - STATE AGENCY - Rapides Parish, Louisiana

A certain tract of land belonging to and not under mineral lease from the Board of Commissioners of the Red River, Atchafalaya and Bayou Boeuf Levee District, on June 13, 2001, being more fully described as follows: The West Half of the Northeast Quarter and the Northwest Quarter of the Southeast Quarter of Section 15, Township 1 South, Range 4 West, Rapides Parish, Louisiana, excluding beds and bottoms of all navigable waters, containing approximately 125.91 acres, as shown outlined in red on a plat on file in the Office of Mineral Resources, Department of Natural Resources, as provided by the applicant. All bearings, distances and coordinates are based on Louisiana Coordinate System of 1927 (South Zone).

NOTE: The boundary description and plat for this tract as shown and as advertised were supplied by the nominating party and have not been checked for accuracy by the staff of the Office of Mineral Resources. Anything which may affect the acreage, the shape or the location of the tract, such as non-closure of or incorrect X, Y coordinates or title disputed acreage, or which may affect the status of the tract for leasing, such as overlap of prior leases or nominated tracts, or which may affect potential operations on leases taken, such as inclusion in areas under the jurisdiction of the Department of Wildlife and Fisheries, will not be specifically determined unless and until a bid on this tract is accepted by the Mineral Board; which bid will be accepted on a per acre basis and which acceptance will be conditional upon such specific determinations being made. Once a bid is conditionally accepted by the Mineral Board, the staff will, within a period following the date of the lease sale, determine the acreage, shape and location of the potential lease area of the tract, the status for leasing of all or any portion thereof, and any conditions which may affect potential operations thereon. These determinations may render all or a portion of the bid area unleaseable or may increase or decrease the State claimed acreage such that the total bonus/rental ultimately required may either exceed the bonus/rental paid at the lease sale, which will require additional payment by the successful bidder, or allow the successful bidder a refund of excessive payment. The successful bidder will be notified of the determinations by the staff and given an opportunity to view the bid area acreage, configuration and location as it has been specifically determined. If all or a portion of the bid area is unleaseable due to overlap of an existing lease, the successful bidder will be given an opportunity to accept or reject a new lease on that portion of the bid area which is not unleaseable. If rejected, the bid and all monies accompanying the bid will be returned to the successful bidder and no lease will be issued. In all other cases a new lease will be issued and any additional per acre bonus/rental, 10% administration fee or \$10 and \$5 per acre fees due as a result of staff determination of more State acreage in the bid area than determined by the successful bidder will be paid prior to the lease being issued. A determination of less State acreage in the bid area will result in a return to the successful bidder of any overpayment.

Applicant: Thomas A. Galloway to Agency and by Resolution of the Board of Commissioners of the Red River, Atchafalaya and Bayou Boeuf

Levee District authorizing the Mineral Board to act in its behalf.

Bidder	Cash Payment	Price / Acre	Rental	Oil	Gas	Other

120000 FEET

(NORTH)

327

1.2 MI. TO LA. 112
3428
GLENORA 11 MI.

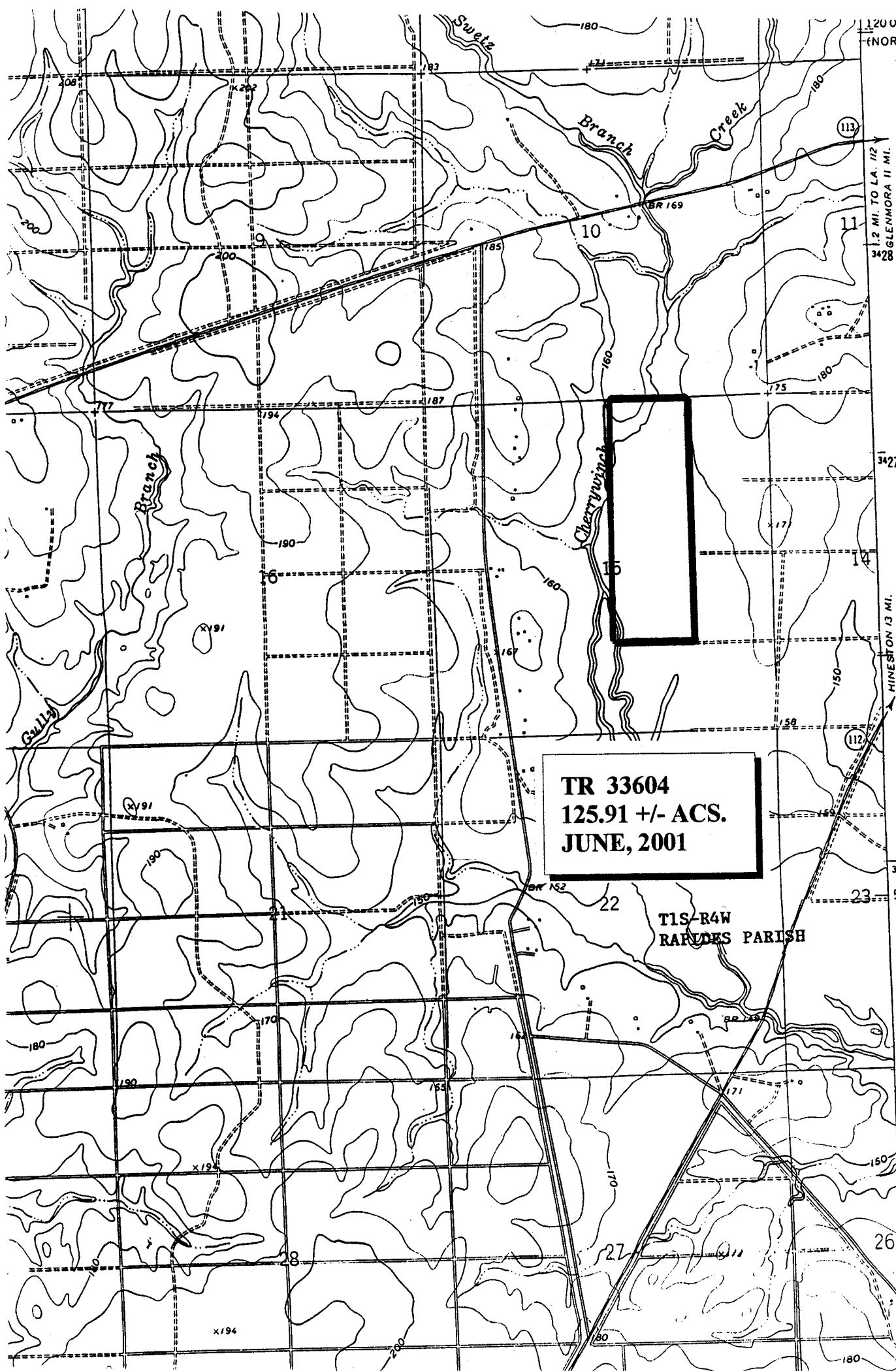
3427
HINESTON 13 MI.
30 MI. TO U.S. 165

3425

57'30"

3424

EE
NW



TR 33604
125.91 +/- ACS.
JUNE, 2001

T1S-R4W
RAYNES PARISH

TRACT 33605 - STATE AGENCY - St. Martin Parish, Louisiana

All of the lands of every nature and description covering and including all servitudes, rights of ways, streets, alleys, lanes, roads and ditches belonging to and not under mineral lease from the St. Martin Parish Police Jury, on June 13, 2001, being more fully described as follows: Beginning at a point having Coordinates of X = 1,884,867.10 and Y = 566,368.92; thence South along the East line 6,731.38 feet to its Southwest corner having Coordinates of X = 1,884,867.10 and Y = 560,002.90; thence West along the South line 6,974.97 feet to its Southwest corner having Coordinates of X = 1,877,892.12 and Y = 560,002.90; thence North along the West line 6,731.38 feet to its Northwest corner having Coordinates of X = 1,877,892.12 and Y = 566,368.92; thence East along the North line 6,974.97 feet to the point of beginning, excluding beds and bottoms of all navigable waters, containing approximately 10.0 acres, as shown outlined in red on a plat on file in the Office of Mineral Resources, Department of Natural Resources, as provided by the applicant. All bearings, distances and coordinates are based on Louisiana Coordinate System of 1927 (South Zone).

NOTE: The boundary description and plat for this tract as shown and as advertised were supplied by the nominating party and have not been checked for accuracy by the staff of the Office of Mineral Resources. Anything which may affect the acreage, the shape or the location of the tract, such as non-closure of or incorrect X, Y coordinates or title disputed acreage, or which may affect the status of the tract for leasing, such as overlap of prior leases or nominated tracts, or which may affect potential operations on leases taken, such as inclusion in areas under the jurisdiction of the Department of Wildlife and Fisheries, will not be specifically determined unless and until a bid on this tract is accepted by the Mineral Board; which bid will be accepted on a per acre basis and which acceptance will be conditional upon such specific determinations being made. Once a bid is conditionally accepted by the Mineral Board, the staff will, within a period following the date of the lease sale, determine the acreage, shape and location of the potential lease area of the tract, the status for leasing of all or any portion thereof, and any conditions which may affect potential operations thereon. These determinations may render all or a portion of the bid area unleaseable or may increase or decrease the State claimed acreage such that the total bonus/rental ultimately required may either exceed the bonus/rental paid at the lease sale, which will require additional payment by the successful bidder, or allow the successful bidder a refund of excessive payment. The successful bidder will be notified of the determinations by the staff and given an opportunity to view the bid area acreage, configuration and location as it has been specifically determined. If all or a portion of the bid area is unleaseable due to overlap of an existing lease, the successful bidder will be given an opportunity to accept or reject a new lease on that portion of the bid area which is not unleaseable. If rejected, the bid and all monies accompanying the bid will be returned to the successful bidder and no lease will be issued. In all other cases a new lease will be issued and any additional per acre bonus/rental, 10% administration fee or \$10 and \$5 per acre fees due as a result of staff determination of more State acreage in the bid area than

determined by the successful bidder will be paid prior to the lease being issued. A determination of less State acreage in the bid area will result in a return to the successful bidder of any overpayment.

Applicant: Merlin Oil and Gas, Inc. to Agency and by Resolution of the St. Martin Parish Police Jury authorizing the Mineral Board to act in its behalf.

Bidder	Cash Payment	Price / Acre	Rental	Oil	Gas	Other

