

being issued. A determination of less State acreage in the bid area will result in a return to the successful bidder of any overpayment.

Applicant: Mineral Services, Inc.

Bidder	Cash Payment	Price / Acre	Rental	Oil	Gas	Other

P.O.B.  
X= 1,942,159.20'  
Y= 474,000.00'

TR 33530  
900 +/- ACS.  
JUNE, 2001

IBERIA PARISH

2000' 0' 2000'

**TRACT 33531 - St. Martin and St. Mary Parishes, Louisiana**

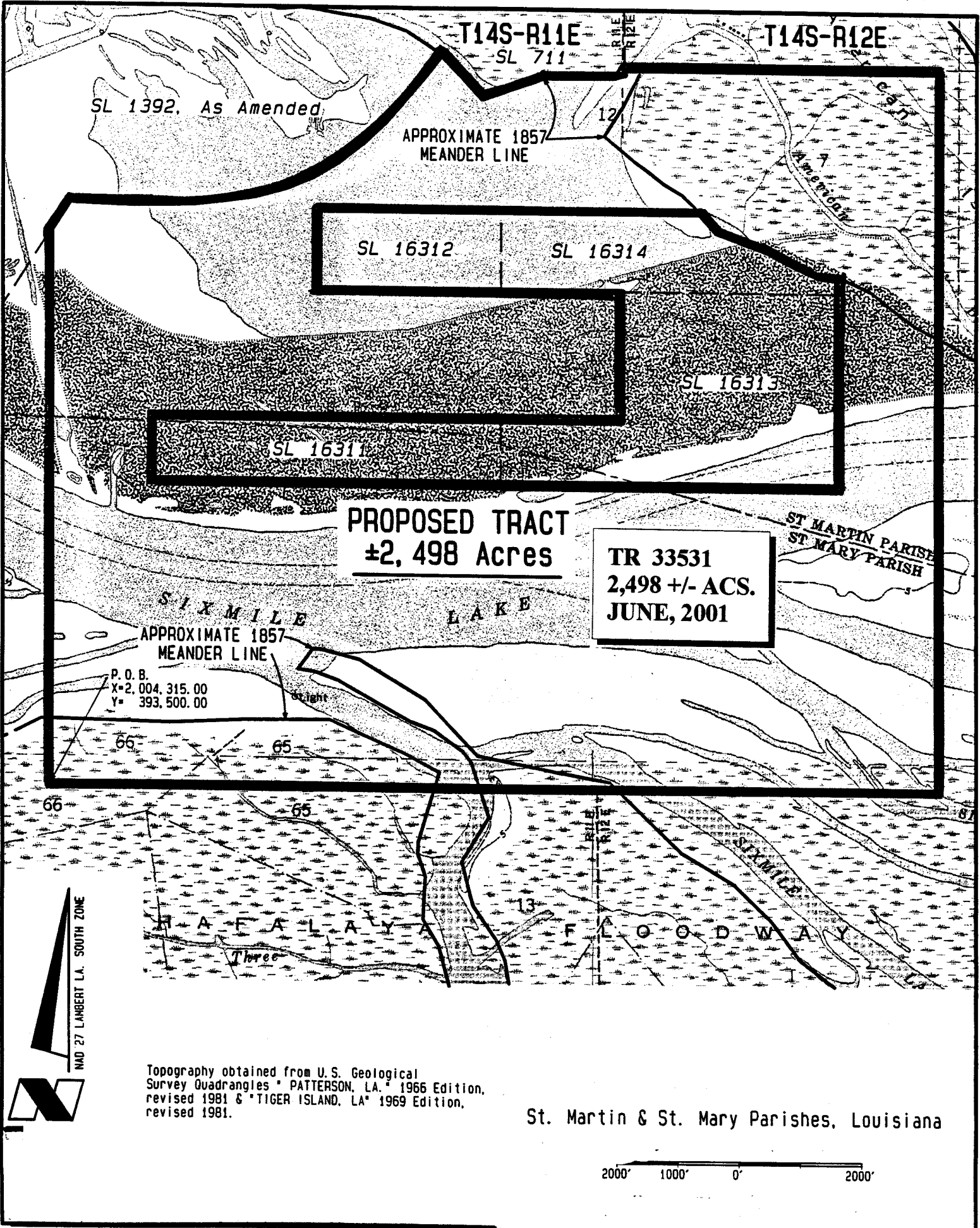
All of the lands now or formerly constituting the beds and bottoms of all water bodies of every nature and description and all islands and other lands formed by accretion or reliction, except tax lands, owned by and not under mineral lease from the State of Louisiana on June 13, 2001, situated in St. Martin and St. Mary Parishes, Louisiana, within the following described boundaries: Beginning at a point having Coordinates of X = 2,004,315.00 and Y = 393,500.00; thence North approximately 9,100 feet to a point on the Southern boundary of State Lease No. 1392, as amended, having a Coordinate of X = 2,004,315.00; thence Northeasterly, Easterly and Northeasterly along the Southern and Eastern boundaries of said State Lease No. 1392 to its Northeast corner, also being a point on the Southern boundary of State Lease No. 711; thence Easterly along the Southern boundary of said State Lease No. 711 to its Southeast corner; thence Northerly along the Eastern boundary of said State Lease No. 711 to a point having a Coordinate of Y = 405,300.00; thence East approximately 5,117 feet to a point having Coordinates of X = 2,018,865.00 and Y = 405,300.00; thence South 11,800.00 feet to a point having Coordinates of X = 2,018,865.00 and Y = 393,500.00; thence West 14,550.00 feet to the point of beginning, **LESS AND EXCEPT** all those portions of State Lease No. 711, State Lease No. 16311, State Lease No. 16312, State Lease No. 16313 and State Lease No. 16314 that lies within the above described tract, containing approximately **2,498 acres**, as shown outlined in red on a plat on file in the Office of Mineral Resources, Department of Natural Resources, as provided by the applicant. All bearings, distances and coordinates are based on Louisiana Coordinate System of 1927 (South Zone).

NOTE: The boundary description and plat for this tract as shown and as advertised were supplied by the nominating party and have not been checked for accuracy by the staff of the Office of Mineral Resources. Anything which may affect the acreage, the shape or the location of the tract, such as non-closure of or incorrect X, Y coordinates or title disputed acreage, or which may affect the status of the tract for leasing, such as overlap of prior leases or nominated tracts, or which may affect potential operations on leases taken, such as inclusion in areas under the jurisdiction of the Department of Wildlife and Fisheries, will not be specifically determined unless and until a bid on this tract is accepted by the Mineral Board; which bid will be accepted on a per acre basis and which acceptance will be conditional upon such specific determinations being made. Once a bid is conditionally accepted by the Mineral Board, the staff will, within a period following the date of the lease sale, determine the acreage, shape and location of the potential lease area of the tract, the status for leasing of all or any portion thereof, and any conditions which may affect potential operations thereon. These determinations may render all or a portion of the bid area unleaseable or may increase or decrease the State claimed acreage such that the total bonus/rental ultimately required may either exceed the bonus/rental paid at the lease sale, which will require additional payment by the successful bidder, or allow the successful bidder a refund of excessive payment. The successful bidder will be notified of the determinations by the staff and given an opportunity to view the bid area acreage, configuration and location as it has been specifically determined. If all or a portion of the bid area is

unleasable due to overlap of an existing lease, the successful bidder will be given an opportunity to accept or reject a new lease on that portion of the bid area which is not unleasable. If rejected, the bid and all monies accompanying the bid will be returned to the successful bidder and no lease will be issued. In all other cases a new lease will be issued and any additional per acre bonus/rental, 10% administration fee or \$10 and \$5 per acre fees due as a result of staff determination of more State acreage in the bid area than determined by the successful bidder will be paid prior to the lease being issued. A determination of less State acreage in the bid area will result in a return to the successful bidder of any overpayment.

Applicant: Paul A. Taranto

Bidder	Cash Payment	Price / Acre	Rental	Oil	Gas	Other



Topography obtained from U.S. Geological  
Survey Quadrangles \* PATTERSON, LA. \* 1966 Edition,  
revised 1981 & \*TIGER ISLAND, LA\* 1969 Edition,  
revised 1981.

St. Martin & St. Mary Parishes, Louisiana

2000' 1000' 0' 2000'

**TRACT 33532 - St. Mary and Terrebonne Parishes, Louisiana**

All of the lands now or formerly constituting the beds and bottoms of all water bodies of every nature and description and all islands and other lands formed by accretion or reliction, except tax lands, owned by and not under mineral lease from the State of Louisiana on June 13, 2001, situated in St. Mary and Terrebonne Parishes, Louisiana, within the following described boundaries: Beginning at a point having Coordinates of X = 2,050,333.00 and Y = 343,433.46, said point also being on the West line of State Lease No. 16044; thence South along the West line of State Lease No. 16044 to a point having Coordinates of X = 2,050,333.00 and y = 341,017.00, said point also being the Northeast corner of State Lease No. 16043; thence West along the North line of State Lease 16043 to a point having Coordinates of X = 2,048,464.46 and Y = 341,017.00, said point also being the Southeast corner of State Lease No. 341; thence Northerly along the East line of State Lease No. 341 to a point having Coordinates of X = 2,048,411.05 and Y = 343,431.89, said point also being the Northwest corner of Section 7, Township 17 South, Range 13 East; thence East along the North line of Section 7, Township 17 South, Range 13 East to the point of beginning, containing approximately **15.23 acres**, as shown outlined in red on a plat on file in the Office of Mineral Resources, Department of Natural Resources, as provided by the applicant. All bearings, distances and coordinates are based on Louisiana Coordinate System of 1927 (South Zone).

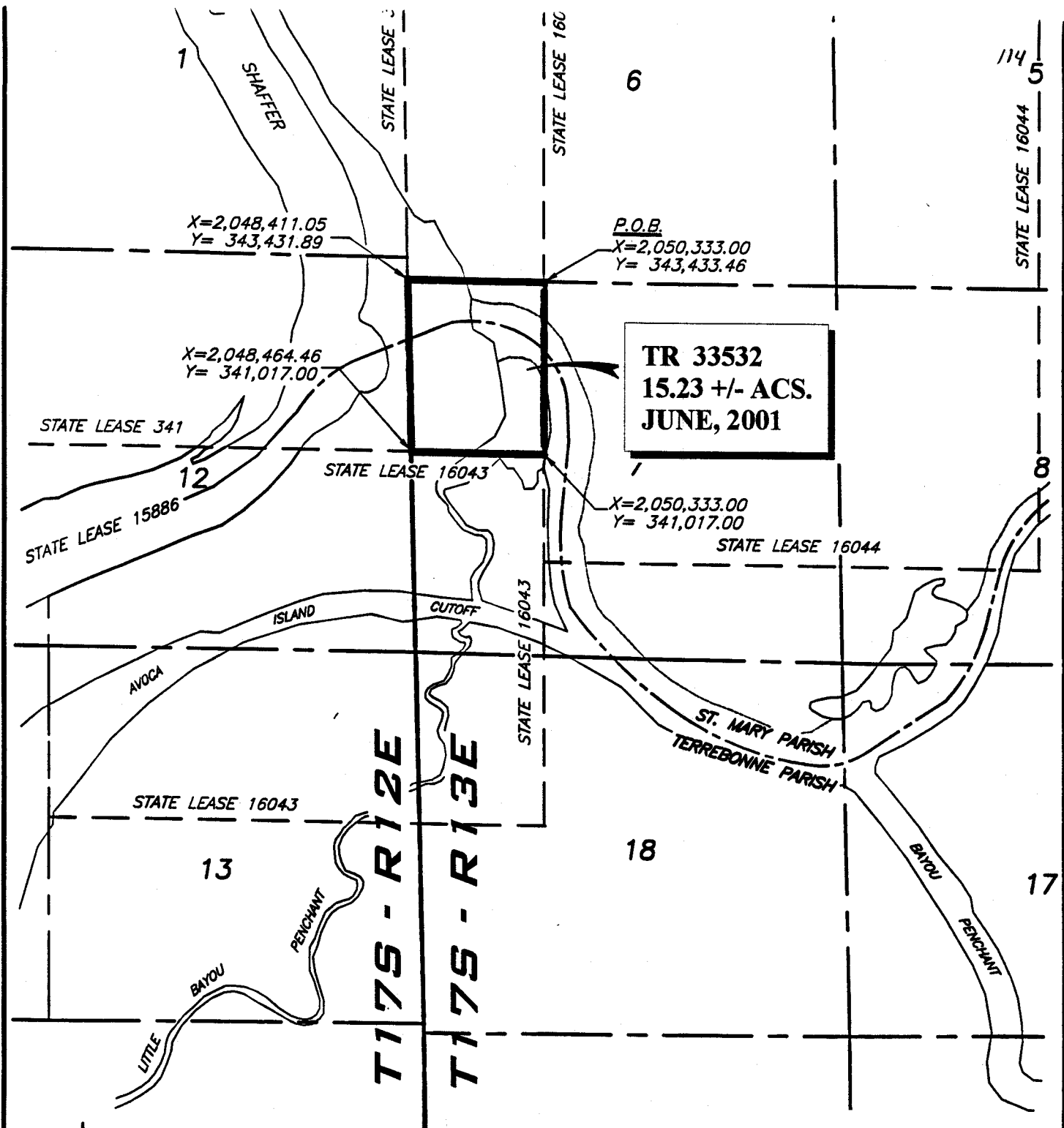
NOTE: The boundary description and plat for this tract as shown and as advertised were supplied by the nominating party and have not been checked for accuracy by the staff of the Office of Mineral Resources. Anything which may affect the acreage, the shape or the location of the tract, such as non-closure of or incorrect X, Y coordinates or title disputed acreage, or which may affect the status of the tract for leasing, such as overlap of prior leases or nominated tracts, or which may affect potential operations on leases taken, such as inclusion in areas under the jurisdiction of the Department of Wildlife and Fisheries, will not be specifically determined unless and until a bid on this tract is accepted by the Mineral Board; which bid will be accepted on a per acre basis and which acceptance will be conditional upon such specific determinations being made. Once a bid is conditionally accepted by the Mineral Board, the staff will, within a period following the date of the lease sale, determine the acreage, shape and location of the potential lease area of the tract, the status for leasing of all or any portion thereof, and any conditions which may affect potential operations thereon. These determinations may render all or a portion of the bid area unleaseable or may increase or decrease the State claimed acreage such that the total bonus/rental ultimately required may either exceed the bonus/rental paid at the lease sale, which will require additional payment by the successful bidder, or allow the successful bidder a refund of excessive payment. The successful bidder will be notified of the determinations by the staff and given an opportunity to view the bid area acreage, configuration and location as it has been specifically determined. If all or a portion of the bid area is unleaseable due to overlap of an existing lease, the successful bidder will be given an opportunity to accept or reject a new lease on that portion of the bid area which is not unleaseable. If rejected, the

bid and all monies accompanying the bid will be returned to the successful bidder and no lease will be issued. In all other cases a new lease will be issued and any additional per acre bonus/rental, 10% administration fee or \$10 and \$5 per acre fees due as a result of staff determination of more State acreage in the bid area than determined by the successful bidder will be paid prior to the lease being issued. A determination of less State acreage in the bid area will result in a return to the successful bidder of any overpayment.

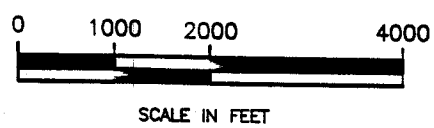
NOTE: The State of Louisiana does hereby reserve, and this lease shall be subject to, the imprescriptible right of surface use in the nature of a servitude in favor of the Department of Natural Resources, including its Offices and Commissions, for the sole purpose of implementing, constructing, servicing and maintaining approved coastal zone management and/or restoration projects. Utilization of any and all rights derived under this lease by the mineral lessee, its agents, successors or assigns, shall not interfere with nor hinder the reasonable surface use by the Department of Natural Resources, its Offices or Commissions, as hereinabove reserved.

Applicant: Cash River Exploration, Inc.

Bidder	Cash Payment	Price / Acre	Rental	Oil	Gas	Other



15.23 ACRES +/-  
LOCATED IN SECTION 7, T-17-S, R-13-E  
ST. MARY & TERREBONNE PARISHES, LOUISIANA





**TRACT 33533 - St. Mary and Terrebonne Parishes, Louisiana**

All of the lands now or formerly constituting the beds and bottoms of all water bodies of every nature and description and all islands and other lands formed by accretion or reliction, except tax lands, owned by and not under mineral lease from the State of Louisiana on June 13, 2001, situated in St. Mary and Terrebonne Parishes, Louisiana, within the following described boundaries: Beginning at a point having Coordinates of X = 2,057,333.00 and Y = 339,500.00, said point also being the Southeast corner of State Lease No. 16044; thence South to a point having Coordinates of X = 2,057,333.00 and Y = 335,800.00; thence West to a point having Coordinates of X = 2,050,333.00 and Y = 335,800.00, said point also being the Southeast corner of State Lease No. 16043; thence North along the East line of State Lease No. 16043 to a point having Coordinates of X = 2,050,333.00 and Y = 339,500.00, said point also being the Southwest corner of State Lease No. 16044; thence East to the point of beginning, containing approximately 139.73 acres, as shown outlined in red on a plat on file in the Office of Mineral Resources, Department of Natural Resources, as provided by the applicant. All bearings, distances and coordinates are based on Louisiana Coordinate System of 1927 (South Zone).

NOTE: The boundary description and plat for this tract as shown and as advertised were supplied by the nominating party and have not been checked for accuracy by the staff of the Office of Mineral Resources. Anything which may affect the acreage, the shape or the location of the tract, such as non-closure of or incorrect X, Y coordinates or title disputed acreage, or which may affect the status of the tract for leasing, such as overlap of prior leases or nominated tracts, or which may affect potential operations on leases taken, such as inclusion in areas under the jurisdiction of the Department of Wildlife and Fisheries, will not be specifically determined unless and until a bid on this tract is accepted by the Mineral Board; which bid will be accepted on a per acre basis and which acceptance will be conditional upon such specific determinations being made. Once a bid is conditionally accepted by the Mineral Board, the staff will, within a period following the date of the lease sale, determine the acreage, shape and location of the potential lease area of the tract, the status for leasing of all or any portion thereof, and any conditions which may affect potential operations thereon. These determinations may render all or a portion of the bid area unleaseable or may increase or decrease the State claimed acreage such that the total bonus/rental ultimately required may either exceed the bonus/rental paid at the lease sale, which will require additional payment by the successful bidder, or allow the successful bidder a refund of excessive payment. The successful bidder will be notified of the determinations by the staff and given an opportunity to view the bid area acreage, configuration and location as it has been specifically determined. If all or a portion of the bid area is unleaseable due to overlap of an existing lease, the successful bidder will be given an opportunity to accept or reject a new lease on that portion of the bid area which is not unleaseable. If rejected, the bid and all monies accompanying the bid will be returned to the successful bidder and no lease will be issued. In all other cases a new lease will be issued and any additional per acre bonus/rental, 10% administration fee or \$10 and \$5 per acre fees due as a result

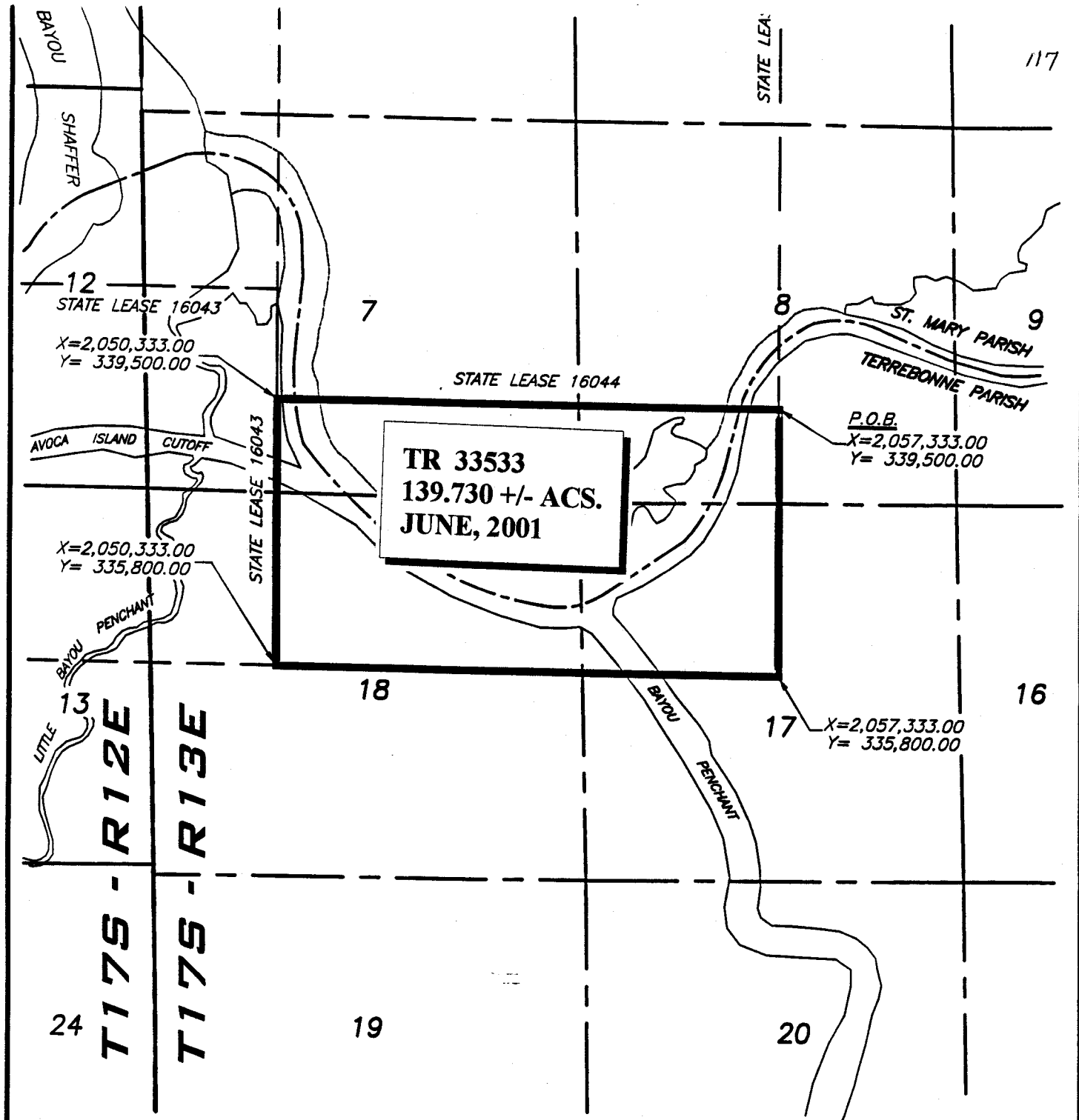
of staff determination of more State acreage in the bid area than determined by the successful bidder will be paid prior to the lease being issued. A determination of less State acreage in the bid area will result in a return to the successful bidder of any overpayment.

NOTE: The above tract is located upon a restricted scenic river and all operations in this area must be conducted in strict conformity with the regulations of the Louisiana Department of Wildlife and Fisheries.

NOTE: The State of Louisiana does hereby reserve, and this lease shall be subject to, the imprescriptible right of surface use in the nature of a servitude in favor of the Department of Natural Resources, including its Offices and Commissions, for the sole purpose of implementing, constructing, servicing and maintaining approved coastal zone management and/or restoration projects. Utilization of any and all rights derived under this lease by the mineral lessee, its agents, successors or assigns, shall not interfere with nor hinder the reasonable surface use by the Department of Natural Resources, its Offices or Commissions, as hereinabove reserved.

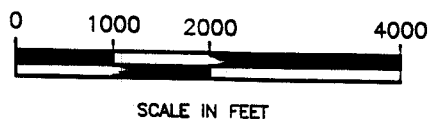
Applicant: Cash River Exploration, Inc.

Bidder	Cash Payment	Price / Acre	Rental	Oil	Gas	Other



139.73 ACRES +/-

LOCATED IN SECTION'S 7, 8, 17 & 18, T-17-S, R-13-E  
ST. MARY AND TERREBONNE PARISHES, LOUISIANA



**TRACT 33534 - Jefferson and St. Charles Parishes, Louisiana**

All of the lands now or formerly constituting the beds and bottoms of all water bodies of every nature and description and all islands and other lands formed by accretion or reliction, except tax lands, owned by and not under mineral lease from the State of Louisiana on June 13, 2001, situated in Jefferson and St. Charles Parishes, Louisiana, within the following described boundaries: Beginning at a point having Coordinates of X = 2,354,800.00 and Y = 406,100.00; thence East 7,551.29 feet to a point on the Western boundary of State Lease No. 15031, as amended, having Coordinates of X = 2,362,351.29 and Y = 406,100.00; thence along the boundary of said State Lease No. 15031 the following courses: South 577.44 feet, South 44 degrees 00 minutes 00 seconds East 3,200.00 feet, East 540.00 feet and South 2,320.67 feet to a point having Coordinates of X = 2,365,114.20 and Y = 400,900.00; thence West 10,314.20 feet to a point having Coordinates of X = 2,354,800.00 and Y = 400,900.00; thence North 5,200.00 feet to the point of beginning, containing approximately 1,107.37 acres, as shown outlined in red on a plat on file in the Office of Mineral Resources, Department of Natural Resources, as provided by the applicant. All bearings, distances and coordinates are based on Louisiana Coordinate System of 1927 (South Zone).

NOTE: The boundary description and plat for this tract as shown and as advertised were supplied by the nominating party and have not been checked for accuracy by the staff of the Office of Mineral Resources. Anything which may affect the acreage, the shape or the location of the tract, such as non-closure of or incorrect X, Y coordinates or title disputed acreage, or which may affect the status of the tract for leasing, such as overlap of prior leases or nominated tracts, or which may affect potential operations on leases taken, such as inclusion in areas under the jurisdiction of the Department of Wildlife and Fisheries, will not be specifically determined unless and until a bid on this tract is accepted by the Mineral Board; which bid will be accepted on a per acre basis and which acceptance will be conditional upon such specific determinations being made. Once a bid is conditionally accepted by the Mineral Board, the staff will, within a period following the date of the lease sale, determine the acreage, shape and location of the potential lease area of the tract, the status for leasing of all or any portion thereof, and any conditions which may affect potential operations thereon. These determinations may render all or a portion of the bid area unleaseable or may increase or decrease the State claimed acreage such that the total bonus/rental ultimately required may either exceed the bonus/rental paid at the lease sale, which will require additional payment by the successful bidder, or allow the successful bidder a refund of excessive payment. The successful bidder will be notified of the determinations by the staff and given an opportunity to view the bid area acreage, configuration and location as it has been specifically determined. If all or a portion of the bid area is unleaseable due to overlap of an existing lease, the successful bidder will be given an opportunity to accept or reject a new lease on that portion of the bid area which is not unleaseable. If rejected, the bid and all monies accompanying the bid will be returned to the successful bidder and no lease will be issued. In all other cases a new lease will be issued and any additional per acre bonus/rental,