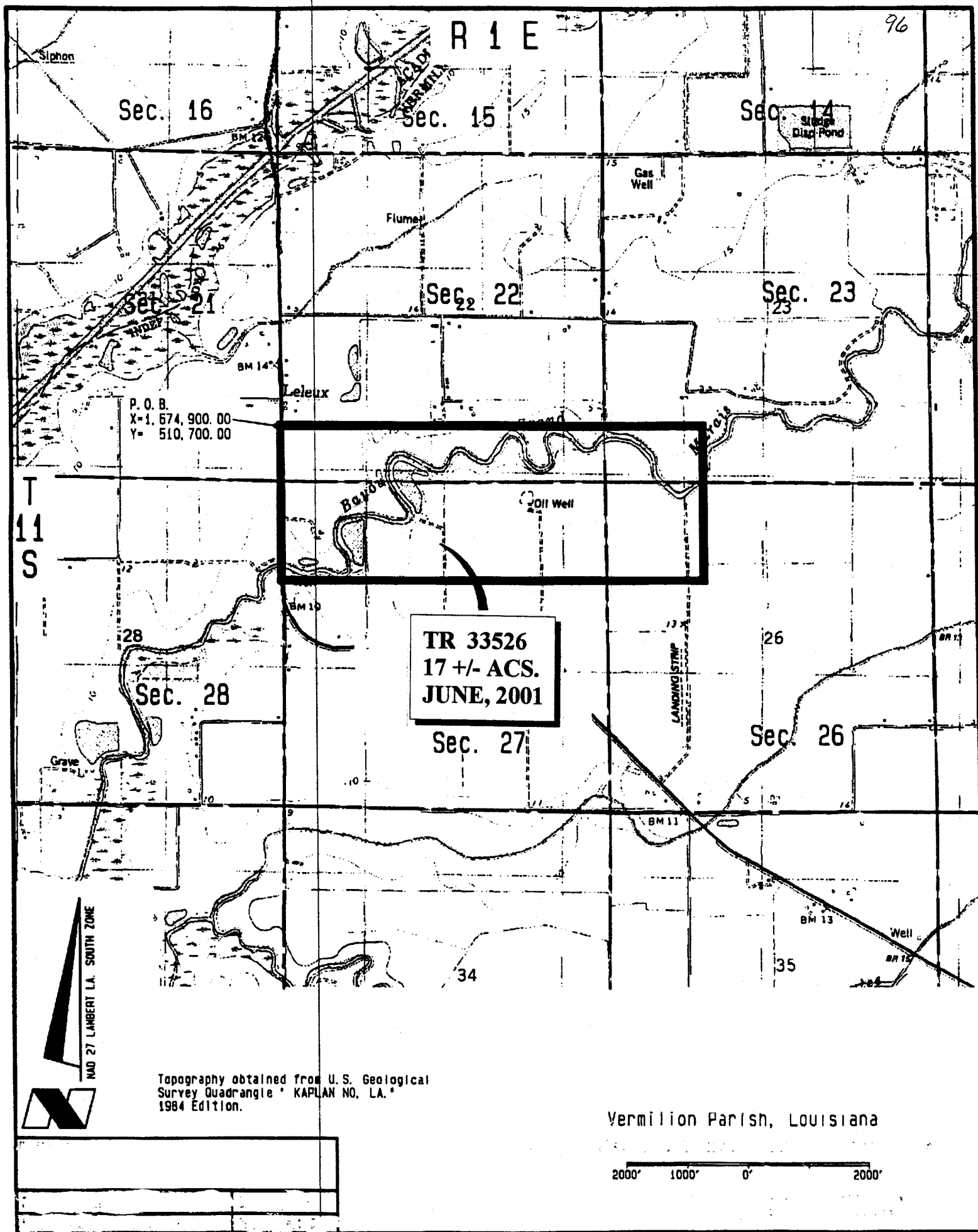


being issued. A determination of less State acreage in the bid area will result in a return to the successful bidder of any overpayment.

Applicant: Angelle & Donohue Oil & Gas Properties, Inc.

Bidder	Cash Payment	Price / Acre	Rental	Oil	Gas	Other



TRACT 33527 - West Feliciana Parish, Louisiana

All of the right, title and interest in and to the lands, water bottoms and dried lake beds owned by and not under mineral lease from the State of Louisiana on June 13, 2001, comprising the site of the Louisiana State Penitentiary, known as Angola State Prison, situated in West Feliciana Parish, Louisiana being more fully described as follows: Beginning at a point having Coordinates of X = 1,931,580.00 and Y = 842,200.00; thence West 14,200.00 feet to a point having Coordinates of X = 1,917,380.00 and Y = 842,200.00; thence South 7,600.00 feet to a point having Coordinates of X = 1,917,380.00 and Y = 834,600.00; thence East 14,200.00 feet to a point having Coordinates of X = 1,931,580.00 and Y = 834,600.00; thence North 7,600.00 feet to the point of beginning, containing approximately 2,477.50 acres, as shown outlined in red on a plat on file in the Office of Mineral Resources, Department of Natural Resources. All bearings, distances and coordinates are based on Louisiana Coordinate System of 1927 (South Zone).

NOTE: The boundary description and plat for this tract as shown and as advertised were supplied by the nominating party and have not been checked for accuracy by the staff of the Office of Mineral Resources. Anything which may affect the acreage, the shape or the location of the tract, such as non-closure of or incorrect X, Y coordinates or title disputed acreage, or which may affect the status of the tract for leasing, such as overlap of prior leases or nominated tracts, or which may affect potential operations on leases taken, such as inclusion in areas under the jurisdiction of the Department of Wildlife and Fisheries, will not be specifically determined unless and until a bid on this tract is accepted by the Mineral Board; which bid will be accepted on a per acre basis and which acceptance will be conditional upon such specific determinations being made. Once a bid is conditionally accepted by the Mineral Board, the staff will, within a period following the date of the lease sale, determine the acreage, shape and location of the potential lease area of the tract, the status for leasing of all or any portion thereof, and any conditions which may affect potential operations thereon. These determinations may render all or a portion of the bid area unleaseable or may increase or decrease the State claimed acreage such that the total bonus/rental ultimately required may either exceed the bonus/rental paid at the lease sale, which will require additional payment by the successful bidder, or allow the successful bidder a refund of excessive payment. The successful bidder will be notified of the determinations by the staff and given an opportunity to view the bid area acreage, configuration and location as it has been specifically determined. If all or a portion of the bid area is unleaseable due to overlap of an existing lease, the successful bidder will be given an opportunity to accept or reject a new lease on that portion of the bid area which is not unleaseable. If rejected, the bid and all monies accompanying the bid will be returned to the successful bidder and no lease will be issued. In all other cases a new lease will be issued and any additional per acre bonus/rental, 10% administration fee or \$10 and \$5 per acre fees due as a result of staff determination of more State acreage in the bid area than determined by the successful bidder will be paid prior to the lease being issued. A determination of less State acreage in the bid area

will result in a return to the successful bidder of any overpayment.

NOTE: Special rules governing access to institutional grounds covered by this tract have been promulgated by the Department of Corrections. Any lease awarded by the Board on said tract shall be subject to these rules, a copy of which shall be attached and made a part of any lease awarded by the Mineral Board. Copies of said rules may be obtained from the Department of Natural Resources, Office of Mineral Resources upon request.

NOTE: Furthermore, it is additionally provided that notwithstanding anything contained in the lease form to the contrary, Lessee agrees that the erection or construction of any derrick, tank, warehouse or other surface equipment, structure or facility shall not unnecessarily interfere with the primary purpose for which Lessor is currently using the leased premises, and to that end Lessee agrees that all such structures or facilities shall be located and maintained only after prior approval by the Secretary of the Department of Corrections for the State of Louisiana as also required in the rules and regulations mentioned above.

Applicant: Lloyd Energy Corporation

Bidder	Cash Payment	Price / Acre	Rental	Oil	Gas	Other

WEST FELICIANA PARISH
T1S-R5W

66 Point of Beginning:

X = 1,931,580.00

Y = 842,200.00

TR 33527
2,477.50 +/- ACS.
JUNE, 2001

2,477.50 acres±

T A T E L P E N A L

LOUISIANA
STATE PENITENTIARY

TRACT 33528 - Iberia and St. Mary Parishes, Louisiana

All of the lands now or formerly constituting the beds and bottoms of all water bodies of every nature and description and all islands and other lands formed by accretion or reliction, except tax lands, owned by and not under mineral lease from the State of Louisiana on June 13, 2001, situated in Iberia and St. Mary Parishes, Louisiana, within the following described boundaries: Beginning at the Southwest corner of State Lease No. 16382 having Coordinates of X = 1,900,500.00 and Y = 333,000.00; thence East 7,800.00 feet along the South boundary of said State Lease No. 16382 to its Southeast corner, also being the Southwest corner of State Lease No. 16383 having Coordinates of X = 1,908,300.00 and Y = 333,000.00; thence East 2,072.32 feet along the South boundary of said State Lease No. 16383 to its Southeast corner having Coordinates of X = 1,910,372.32 and Y = 333,000.00; thence South 2,000.00 feet to a point having Coordinates of X = 1,910,372.32 and Y = 331,000.00; thence West 9,872.32 feet to a point having Coordinates of X = 1,900,500.00 and Y = 331,000.00; thence North 2,000.00 feet to the point of beginning, containing approximately **453.27 acres**, as shown outlined in red on a plat on file in the Office of Mineral Resources, Department of Natural Resources, as provided by the applicant. All bearings, distances and coordinates are based on Louisiana Coordinate System of 1927 (South Zone).

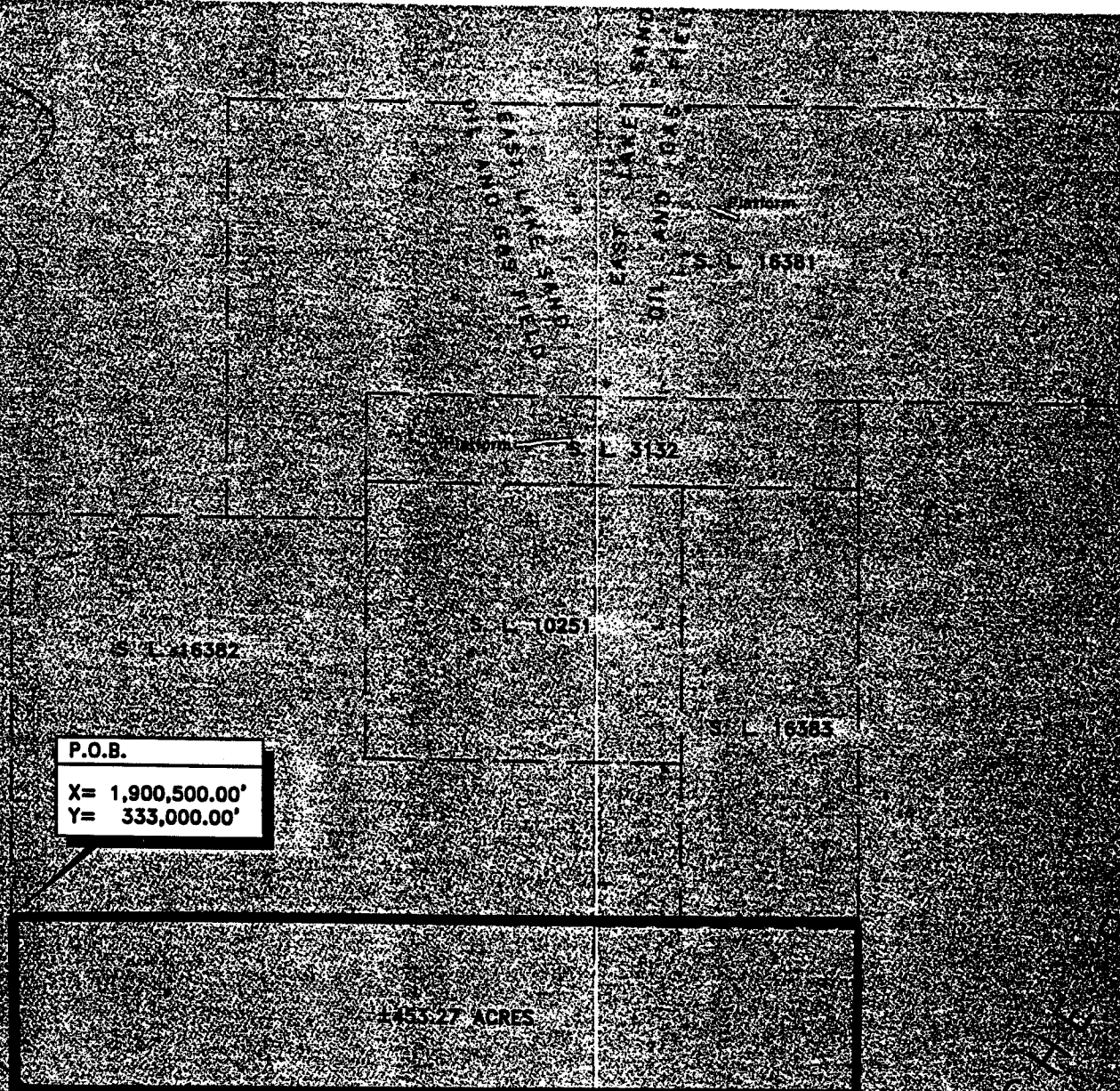
NOTE: The boundary description and plat for this tract as shown and as advertised were supplied by the nominating party and have not been checked for accuracy by the staff of the Office of Mineral Resources. Anything which may affect the acreage, the shape or the location of the tract, such as non-closure of or incorrect X, Y coordinates or title disputed acreage, or which may affect the status of the tract for leasing, such as overlap of prior leases or nominated tracts, or which may affect potential operations on leases taken, such as inclusion in areas under the jurisdiction of the Department of Wildlife and Fisheries, will not be specifically determined unless and until a bid on this tract is accepted by the Mineral Board; which bid will be accepted on a per acre basis and which acceptance will be conditional upon such specific determinations being made. Once a bid is conditionally accepted by the Mineral Board, the staff will, within a period following the date of the lease sale, determine the acreage, shape and location of the potential lease area of the tract, the status for leasing of all or any portion thereof, and any conditions which may affect potential operations thereon. These determinations may render all or a portion of the bid area unleaseable or may increase or decrease the State claimed acreage such that the total bonus/rental ultimately required may either exceed the bonus/rental paid at the lease sale, which will require additional payment by the successful bidder, or allow the successful bidder a refund of excessive payment. The successful bidder will be notified of the determinations by the staff and given an opportunity to view the bid area acreage, configuration and location as it has been specifically determined. If all or a portion of the bid area is unleaseable due to overlap of an existing lease, the successful bidder will be given an opportunity to accept or reject a new lease on that portion of the bid area which is not unleaseable. If rejected, the bid and all monies accompanying the bid will be returned to the successful bidder and no lease will be issued. In all other cases

a new lease will be issued and any additional per acre bonus/rental, 10% administration fee or \$10 and \$5 per acre fees due as a result of staff determination of more State acreage in the bid area than determined by the successful bidder will be paid prior to the lease being issued. A determination of less State acreage in the bid area will result in a return to the successful bidder of any overpayment.

NOTE: The State of Louisiana does hereby reserve, and this lease shall be subject to, the imprescriptible right of surface use in the nature of a servitude in favor of the Department of Natural Resources, including its Offices and Commissions, for the sole purpose of implementing, constructing, servicing and maintaining approved coastal zone management and/or restoration projects. Utilization of any and all rights derived under this lease by the mineral lessee, its agents, successors or assigns, shall not interfere with nor hinder the reasonable surface use by the Department of Natural Resources, its Offices or Commissions, as hereinabove reserved.

Applicant: Energy Partners, Inc.

Bidder	Cash Payment	Price / Acre	Rental	Oil	Gas	Other

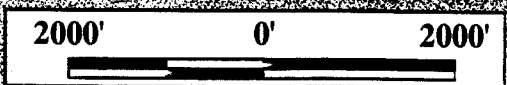


P.O.B.
X= 1,900,500.00'
Y= 333,000.00'

TR 33528
453.27 +/- ACS.
JUNE, 2001



ST. MARY AND IBERIA PARISHES



TRACT 33529 - Iberia Parish, Louisiana

All of the lands now or formerly constituting the beds and bottoms of all water bodies of every nature and description and all islands and other lands formed by accretion or reliction, except tax lands, owned by and not under mineral lease from the State of Louisiana on June 13, 2001, situated in Iberia Parish, Louisiana, within the following described boundaries: Beginning at a point having Coordinates of X = 1,942,159.20 and Y = 474,000.00; thence South 5,000.00 feet to a point having Coordinates of X = 1,942,159.20 and Y = 469,000.00; thence West 7,840.80 feet to a point having Coordinates of X = 1,934,318.40 and Y = 469,000.00; thence North 5,000.00 feet to a point having Coordinates of X = 1,934,318.40 and Y = 474,000.00; thence East 7,840.80 feet to the point of beginning, containing approximately **470 acres**, as shown outlined in red on a plat on file in the Office of Mineral Resources, Department of Natural Resources, as provided by the applicant. All bearings, distances and coordinates are based on Louisiana Coordinate System of 1927 (South Zone).

NOTE: The boundary description and plat for this tract as shown and as advertised were supplied by the nominating party and have not been checked for accuracy by the staff of the Office of Mineral Resources. Anything which may affect the acreage, the shape or the location of the tract, such as non-closure of or incorrect X, Y coordinates or title disputed acreage, or which may affect the status of the tract for leasing, such as overlap of prior leases or nominated tracts, or which may affect potential operations on leases taken, such as inclusion in areas under the jurisdiction of the Department of Wildlife and Fisheries, will not be specifically determined unless and until a bid on this tract is accepted by the Mineral Board; which bid will be accepted on a per acre basis and which acceptance will be conditional upon such specific determinations being made. Once a bid is conditionally accepted by the Mineral Board, the staff will, within a period following the date of the lease sale, determine the acreage, shape and location of the potential lease area of the tract, the status for leasing of all or any portion thereof, and any conditions which may affect potential operations thereon. These determinations may render all or a portion of the bid area unleaseable or may increase or decrease the State claimed acreage such that the total bonus/rental ultimately required may either exceed the bonus/rental paid at the lease sale, which will require additional payment by the successful bidder, or allow the successful bidder a refund of excessive payment. The successful bidder will be notified of the determinations by the staff and given an opportunity to view the bid area acreage, configuration and location as it has been specifically determined. If all or a portion of the bid area is unleaseable due to overlap of an existing lease, the successful bidder will be given an opportunity to accept or reject a new lease on that portion of the bid area which is not unleaseable. If rejected, the bid and all monies accompanying the bid will be returned to the successful bidder and no lease will be issued. In all other cases a new lease will be issued and any additional per acre bonus/rental, 10% administration fee or \$10 and \$5 per acre fees due as a result of staff determination of more State acreage in the bid area than determined by the successful bidder will be paid prior to the lease

being issued. A determination of less State acreage in the bid area will result in a return to the successful bidder of any overpayment.

Applicant: Mineral Services, Inc.

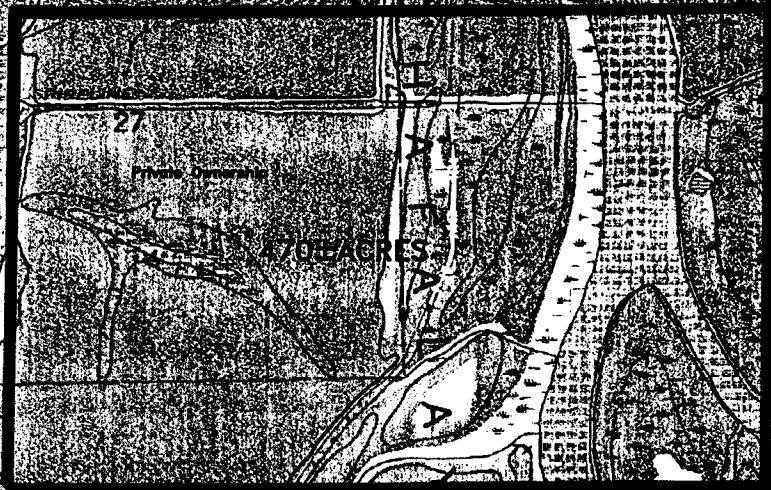
Bidder	Cash Payment	Price / Acre	Rental	Oil	Gas	Other

P.O.B.
X= 1,942,159.20'
Y= 474,000.00'

TR 33529
470 +/- ACS.
JUNE, 2001

IBERIA PARISH

2000' 0' 2000'



APPROXIMATE BOUNDARY
TAKAPUS ISLAND STATE WILDLIFE MANAGEMENT AREA

IBERIA PARISH
ST. MARK PARISH

TRACT 33530 - Iberia Parish, Louisiana

All of the lands now or formerly constituting the beds and bottoms of all water bodies of every nature and description and all islands and other lands formed by accretion or reliction, except tax lands, owned by and not under mineral lease from the State of Louisiana on June 13, 2001, situated in Iberia Parish, Louisiana, within the following described boundaries: Beginning at a point having Coordinates of X = 1,942,159.20 and Y = 474,000.00; thence East 7,840.80 feet to a point having Coordinates of X = 1,950,000.00 and Y = 474,000.00; thence South 5,000.00 feet to a point having Coordinates of X = 1,950,000.00 and Y = 469,000.00; thence West 7,840.80 feet to a point having Coordinates of X = 1,942,159.20 and Y = 469,000.00; thence North 5,000.00 feet to the point of beginning, containing approximately **900 acres**, as shown outlined in red on a plat on file in the Office of Mineral Resources, Department of Natural Resources, as provided by the applicant. All bearings, distances and coordinates are based on Louisiana Coordinate System of 1927 (South Zone).

NOTE: The boundary description and plat for this tract as shown and as advertised were supplied by the nominating party and have not been checked for accuracy by the staff of the Office of Mineral Resources. Anything which may affect the acreage, the shape or the location of the tract, such as non-closure of or incorrect X, Y coordinates or title disputed acreage, or which may affect the status of the tract for leasing, such as overlap of prior leases or nominated tracts, or which may affect potential operations on leases taken, such as inclusion in areas under the jurisdiction of the Department of Wildlife and Fisheries, will not be specifically determined unless and until a bid on this tract is accepted by the Mineral Board; which bid will be accepted on a per acre basis and which acceptance will be conditional upon such specific determinations being made. Once a bid is conditionally accepted by the Mineral Board, the staff will, within a period following the date of the lease sale, determine the acreage, shape and location of the potential lease area of the tract, the status for leasing of all or any portion thereof, and any conditions which may affect potential operations thereon. These determinations may render all or a portion of the bid area unleaseable or may increase or decrease the State claimed acreage such that the total bonus/rental ultimately required may either exceed the bonus/rental paid at the lease sale, which will require additional payment by the successful bidder, or allow the successful bidder a refund of excessive payment. The successful bidder will be notified of the determinations by the staff and given an opportunity to view the bid area acreage, configuration and location as it has been specifically determined. If all or a portion of the bid area is unleaseable due to overlap of an existing lease, the successful bidder will be given an opportunity to accept or reject a new lease on that portion of the bid area which is not unleaseable. If rejected, the bid and all monies accompanying the bid will be returned to the successful bidder and no lease will be issued. In all other cases a new lease will be issued and any additional per acre bonus/rental, 10% administration fee or \$10 and \$5 per acre fees due as a result of staff determination of more State acreage in the bid area than determined by the successful bidder will be paid prior to the lease