

P.O.B.

X = 2,539,491.95'
Y = 447,168.46'

±1,452 ACRES

TR 33595
1,452 +/- ACS.
JUNE, 2001

N

LAKE BORGNE

S. L. 16697

ST. BERNARD PARISH

Scale- 1"=2000'

TRACT 33596 - St. Bernard Parish, Louisiana

All of the lands now or formerly constituting the beds and bottoms of all water bodies of every nature and description and all islands and other lands formed by accretion or reliction, except tax lands, owned by and not under mineral lease from the State of Louisiana on June 13, 2001, situated in St. Bernard Parish, Louisiana, within the following described boundaries: Beginning at a point having Coordinates of X = 2,546,870.98 and Y = 461,926.51; thence South 14,758.05 feet to a point having Coordinates of X = 2,546,870.98 and Y = 447,168.46; thence West 7,379.03 feet to a point having Coordinates of X = 2,539,491.95 and Y = 447,168.46; thence North 14,758.05 feet to a point having Coordinates of X = 2,539,491.95 and Y = 461,926.51; thence East 7,379.03 feet to the point of beginning, containing approximately **2,500.00 acres**, as shown outlined in red on a plat on file in the Office of Mineral Resources, Department of Natural Resources, as provided by the applicant. All bearings, distances and coordinates are based on Louisiana Coordinate System of 1927 (South Zone).

NOTE: The boundary description and plat for this tract as shown and as advertised were supplied by the nominating party and have not been checked for accuracy by the staff of the Office of Mineral Resources. Anything which may affect the acreage, the shape or the location of the tract, such as non-closure of or incorrect X, Y coordinates or title disputed acreage, or which may affect the status of the tract for leasing, such as overlap of prior leases or nominated tracts, or which may affect potential operations on leases taken, such as inclusion in areas under the jurisdiction of the Department of Wildlife and Fisheries, will not be specifically determined unless and until a bid on this tract is accepted by the Mineral Board; which bid will be accepted on a per acre basis and which acceptance will be conditional upon such specific determinations being made. Once a bid is conditionally accepted by the Mineral Board, the staff will, within a period following the date of the lease sale, determine the acreage, shape and location of the potential lease area of the tract, the status for leasing of all or any portion thereof, and any conditions which may affect potential operations thereon. These determinations may render all or a portion of the bid area unleaseable or may increase or decrease the State claimed acreage such that the total bonus/rental ultimately required may either exceed the bonus/rental paid at the lease sale, which will require additional payment by the successful bidder, or allow the successful bidder a refund of excessive payment. The successful bidder will be notified of the determinations by the staff and given an opportunity to view the bid area acreage, configuration and location as it has been specifically determined. If all or a portion of the bid area is unleaseable due to overlap of an existing lease, the successful bidder will be given an opportunity to accept or reject a new lease on that portion of the bid area which is not unleaseable. If rejected, the bid and all monies accompanying the bid will be returned to the successful bidder and no lease will be issued. In all other cases a new lease will be issued and any additional per acre bonus/rental, 10% administration fee or \$10 and \$5 per acre fees due as a result of staff determination of more State acreage in the bid area than determined by the successful bidder will be paid prior to the lease

being issued. A determination of less State acreage in the bid area will result in a return to the successful bidder of any overpayment.

NOTE: The Office of Mineral Resources will require a minimum bonus of \$180.00 per acre and a minimum royalty of 21%.

NOTE: The above tract is located in or near an oyster restricted area and all operations in such area must be conducted in strict conformity with the stipulations and/or regulations of the Louisiana Department of Wildlife and Fisheries.

NOTE: The State of Louisiana does hereby reserve, and this lease shall be subject to, the imprescriptible right of surface use in the nature of a servitude in favor of the Department of Natural Resources, including its Offices and Commissions, for the sole purpose of implementing, constructing, servicing and maintaining approved coastal zone management and/or restoration projects. Utilization of any and all rights derived under this lease by the mineral lessee, its agents, successors or assigns, shall not interfere with nor hinder the reasonable surface use by the Department of Natural Resources, its Offices or Commissions, as hereinabove reserved.

Applicant: Louisiana Oil and Gas, Inc.

Bidder	Cash Payment	Price / Acre	Rental	Oil	Gas	Other

P.O.B.
 X = 2,546,870.98
 Y = 461,926.51

TR 33596
 2,500 +/- ACS.
 JUNE, 2001

LAKE BORGNE

Hay Press
 ST 5102
 50170-1-2

9602

Monterey Fuel
 ST 5102
 80214 (1)

11200

Shell Oil Co.
 ST 4288
 61 (1)

16900

1S 83E 29-52-30

89-27-20

Residential Property

DAYOU

33

THE DATA USED TO PRODUCE
 THIS MAP IS COPYRIGHTED BY
 TOBIN INTERNATIONAL, LTD.,
 AND ALL RIGHTS ARE RESERVED
 BY TOBIN INTERNATIONAL, LTD.

STATE LEASE SALE

St. Bernard Parish, LA

SCALE: 1" = 3000'

TRACT 33597 - St. Bernard Parish, Louisiana

All of the lands now or formerly constituting the beds and bottoms of all water bodies of every nature and description and all islands and other lands formed by accretion or reliction, except tax lands, owned by and not under mineral lease from the State of Louisiana on June 13, 2001, situated in St. Bernard Parish, Louisiana, within the following described boundaries: Beginning at a point having Coordinates of X = 2,539,491.95 and Y = 447,168.46; thence East 11,857.61 feet to an intersection point on the West boundary of State Lease No. 16697 having Coordinates of X = 2,551,349.56 and Y = 447,168.46; thence along the Western boundary of said State Lease No. 16697 the following courses: South 19 degrees 07 minutes 21 seconds West 1,228.85 feet to a corner having Coordinates of X = 2,550,947.01 and Y = 446,007.42; South 52 degrees 38 minutes 20 seconds West 3,795.40 feet to a corner having Coordinates of X = 2,547,930.32 and Y = 443,704.23; South 55 degrees 15 minutes 19 seconds West 3,303.08 feet to a corner having Coordinates of X = 2,545,216.18 and Y = 441,821.73; South 68 degrees 35 minutes 01 seconds West 3,534.21 feet to a corner having Coordinates of X = 2,541,926.00 and Y = 440,531.24; South 01 degrees 15 minutes 15 seconds East 2,531.85 feet to a point having Coordinates of X = 2,541,981.42 and Y = 438,000.00; thence West 2,489.47 feet to a point having Coordinates of X = 2,539,491.95 and Y = 438,000.00; thence North 9,168.46 feet to the point of beginning, containing approximately 1,318 acres, as shown outlined in red on a plat on file in the Office of Mineral Resources, Department of Natural Resources, as provided by the applicant. All bearings, distances and coordinates are based on Louisiana Coordinate System of 1927 (South Zone).

NOTE: The boundary description and plat for this tract as shown and as advertised were supplied by the nominating party and have not been checked for accuracy by the staff of the Office of Mineral Resources. Anything which may affect the acreage, the shape or the location of the tract, such as non-closure of or incorrect X, Y coordinates or title disputed acreage, or which may affect the status of the tract for leasing, such as overlap of prior leases or nominated tracts, or which may affect potential operations on leases taken, such as inclusion in areas under the jurisdiction of the Department of Wildlife and Fisheries, will not be specifically determined unless and until a bid on this tract is accepted by the Mineral Board; which bid will be accepted on a per acre basis and which acceptance will be conditional upon such specific determinations being made. Once a bid is conditionally accepted by the Mineral Board, the staff will, within a period following the date of the lease sale, determine the acreage, shape and location of the potential lease area of the tract, the status for leasing of all or any portion thereof, and any conditions which may affect potential operations thereon. These determinations may render all or a portion of the bid area unleaseable or may increase or decrease the State claimed acreage such that the total bonus/rental ultimately required may either exceed the bonus/rental paid at the lease sale, which will require additional payment by the successful bidder, or allow the successful bidder a refund of excessive payment. The successful bidder will be notified of the determinations by the staff and given an opportunity to view the bid area acreage, configuration and location as it has been specifically determined. If all or a portion of the bid area is

unleasable due to overlap of an existing lease, the successful bidder will be given an opportunity to accept or reject a new lease on that portion of the bid area which is not unleasable. If rejected, the bid and all monies accompanying the bid will be returned to the successful bidder and no lease will be issued. In all other cases a new lease will be issued and any additional per acre bonus/rental, 10% administration fee or \$10 and \$5 per acre fees due as a result of staff determination of more State acreage in the bid area than determined by the successful bidder will be paid prior to the lease being issued. A determination of less State acreage in the bid area will result in a return to the successful bidder of any overpayment.

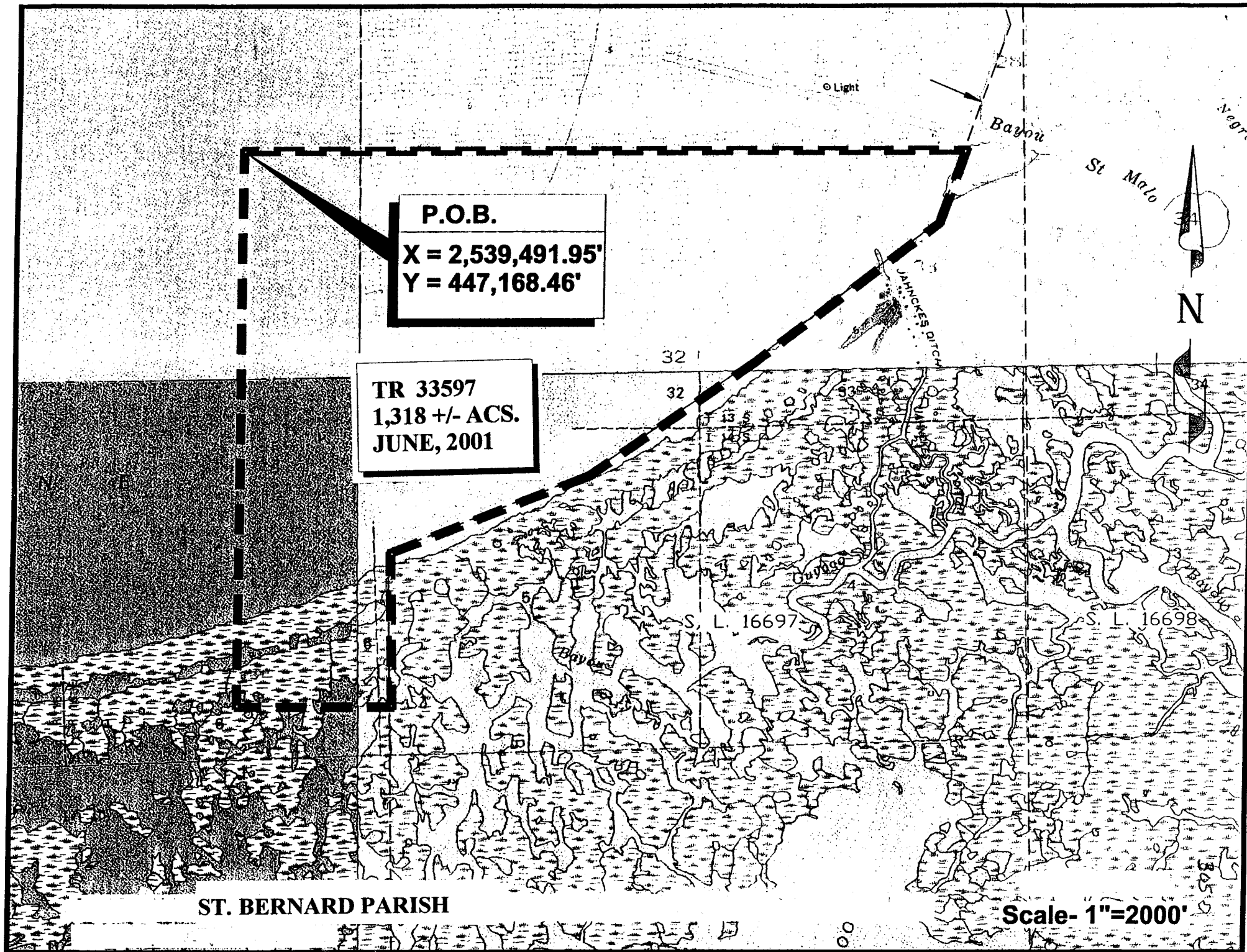
NOTE: The Office of Mineral Resources will require a minimum bonus of \$180.00 per acre and a minimum royalty of 21%.

NOTE: The above tract is located in or near an oyster restricted area and all operations in such area must be conducted in strict conformity with the stipulations and/or regulations of the Louisiana Department of Wildlife and Fisheries.

NOTE: The State of Louisiana does hereby reserve, and this lease shall be subject to, the imprescriptible right of surface use in the nature of a servitude in favor of the Department of Natural Resources, including its Offices and Commissions, for the sole purpose of implementing, constructing, servicing and maintaining approved coastal zone management and/or restoration projects. Utilization of any and all rights derived under this lease by the mineral lessee, its agents, successors or assigns, shall not interfere with nor hinder the reasonable surface use by the Department of Natural Resources, its Offices or Commissions, as hereinabove reserved.

Applicant: Louisiana Oil and Gas, Inc.

Bidder	Cash Payment	Price / Acre	Rental	Oil	Gas	Other



TRACT 33598 - St. Bernard Parish, Louisiana

All of the lands now or formerly constituting the beds and bottoms of all water bodies of every nature and description and all islands and other lands formed by accretion or reliction, except tax lands, owned by and not under mineral lease from the State of Louisiana on June 13, 2001, situated in St. Bernard Parish, Louisiana, within the following described boundaries: Beginning at a point having Coordinates of X = 2,546,870.98 and Y = 461,926.51; thence East 6,312.10 feet to an intersection point on the West boundary of State Lease No. 16695 having Coordinates of X = 2,553,183.07 and Y = 461,926.51; thence along the Western boundary of said State Lease No. 16695 the following courses: South 34 degrees 17 minutes 01 seconds West 3,617.59 feet to a corner having Coordinates of X = 2,551,145.33 and Y = 458,937.44 and South 03 degrees 36 minutes 00 seconds East 8,306.95 feet to the Southwest corner of said State Lease No. 16695, also being the Northwest corner of State Lease No. 16697, having Coordinates of X = 2,551,666.92 and Y = 450,646.89; thence along the Western boundary of said State Lease No. 16697 the following courses: South 17 degrees 43 minutes 44 seconds East 1,400.02 feet to a corner having Coordinates of X = 2,552,093.25 and Y = 449,313.36 and South 19 degrees 07 minutes 21 seconds West 2,270.17 feet to a point having Coordinates of X = 2,551,349.56 and Y = 447,168.46; thence West 4,478.59 feet to a point having Coordinates of X = 2,546,870.98 and Y = 447,168.46; thence North 14,758.05 feet to the point of beginning, said tract excluding any and all portions of the Biloxi Wildlife Management Area, containing approximately 1,618.55 acres, as shown outlined in red on a plat on file in the Office of Mineral Resources, Department of Natural Resources, as provided by the applicant. All bearings, distances and coordinates are based on Louisiana Coordinate System of 1927 (South Zone).

NOTE: The boundary description and plat for this tract as shown and as advertised were supplied by the nominating party and have not been checked for accuracy by the staff of the Office of Mineral Resources. Anything which may affect the acreage, the shape or the location of the tract, such as non-closure of or incorrect X, Y coordinates or title disputed acreage, or which may affect the status of the tract for leasing, such as overlap of prior leases or nominated tracts, or which may affect potential operations on leases taken, such as inclusion in areas under the jurisdiction of the Department of Wildlife and Fisheries, will not be specifically determined unless and until a bid on this tract is accepted by the Mineral Board; which bid will be accepted on a per acre basis and which acceptance will be conditional upon such specific determinations being made. Once a bid is conditionally accepted by the Mineral Board, the staff will, within a period following the date of the lease sale, determine the acreage, shape and location of the potential lease area of the tract, the status for leasing of all or any portion thereof, and any conditions which may affect potential operations thereon. These determinations may render all or a portion of the bid area unleaseable or may increase or decrease the State claimed acreage such that the total bonus/rental ultimately required may either exceed the bonus/rental paid at the lease sale, which will require additional payment by the successful bidder, or allow the successful bidder a refund of excessive payment. The successful bidder will be notified of the determinations by the staff and given an opportunity to view

the bid area acreage, configuration and location as it has been specifically determined. If all or a portion of the bid area is unleaseable due to overlap of an existing lease, the successful bidder will be given an opportunity to accept or reject a new lease on that portion of the bid area which is not unleaseable. If rejected, the bid and all monies accompanying the bid will be returned to the successful bidder and no lease will be issued. In all other cases a new lease will be issued and any additional per acre bonus/rental, 10% administration fee or \$10 and \$5 per acre fees due as a result of staff determination of more State acreage in the bid area than determined by the successful bidder will be paid prior to the lease being issued. A determination of less State acreage in the bid area will result in a return to the successful bidder of any overpayment.

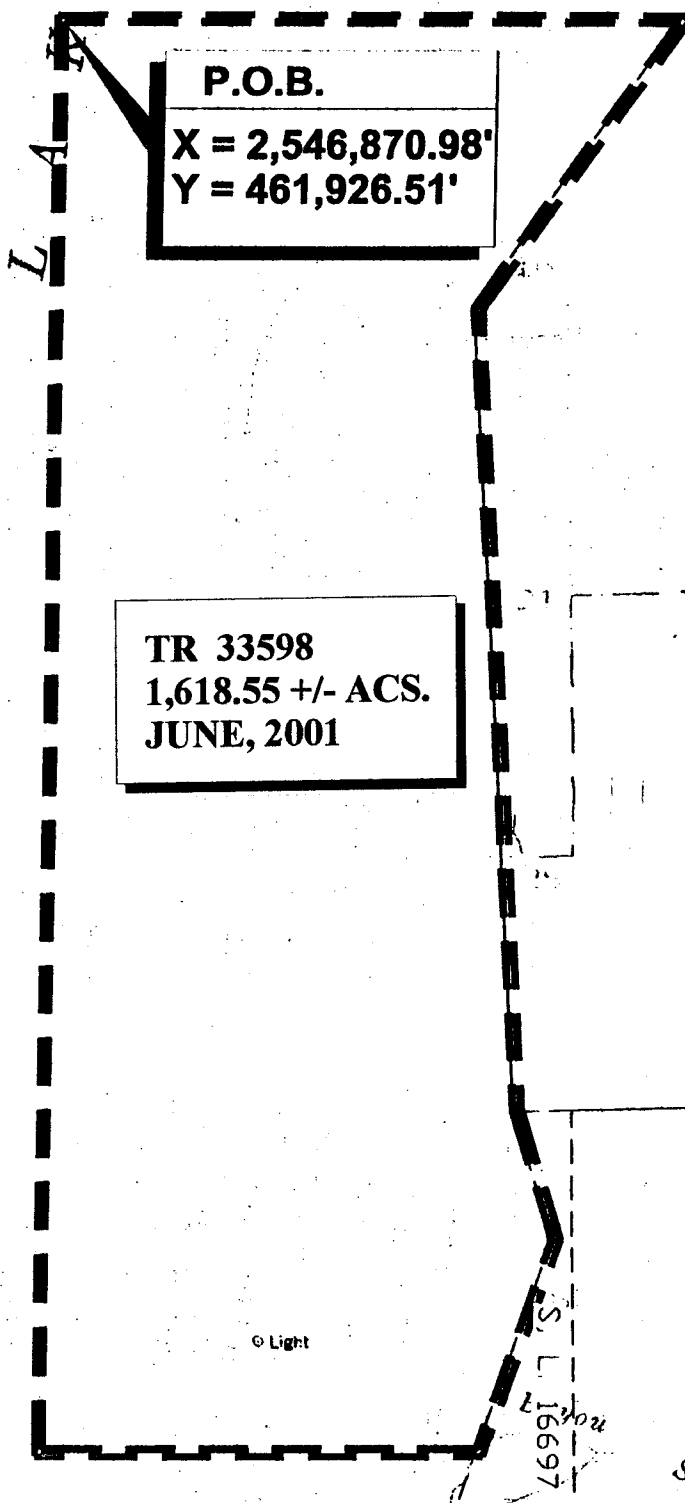
NOTE: The Office of Mineral Resources will require a minimum bonus of \$180.00 per acre and a minimum royalty of 21%.

NOTE: The above tract is located in or near an oyster restricted area and all operations in such area must be conducted in strict conformity with the stipulations and/or regulations of the Louisiana Department of Wildlife and Fisheries.

NOTE: The State of Louisiana does hereby reserve, and this lease shall be subject to, the imprescriptible right of surface use in the nature of a servitude in favor of the Department of Natural Resources, including its Offices and Commissions, for the sole purpose of implementing, constructing, servicing and maintaining approved coastal zone management and/or restoration projects. Utilization of any and all rights derived under this lease by the mineral lessee, its agents, successors or assigns, shall not interfere with nor hinder the reasonable surface use by the Department of Natural Resources, its Offices or Commissions, as hereinabove reserved.

Applicant: Louisiana Oil and Gas, Inc.

Bidder	Cash Payment	Price / Acre	Rental	Oil	Gas	Other



P.O.B.

X = 2,546,870.98'

Y = 461,926.51'

LAKE BORGNE

ORLEANS AND/OR
ST. BERNARD AND/OR
ST. TAMMANY PARISHES,
LOUISIANA

TR 33598
1,618.55 +/- ACS.
JUNE, 2001

S. L. 16695

Bayou

Bayou

S. L. 16698

Light

S. L. 16697

St. Mo

Negro

Scale- 1"=2000'



308

TRACT 33599 - Bossier Parish, Louisiana

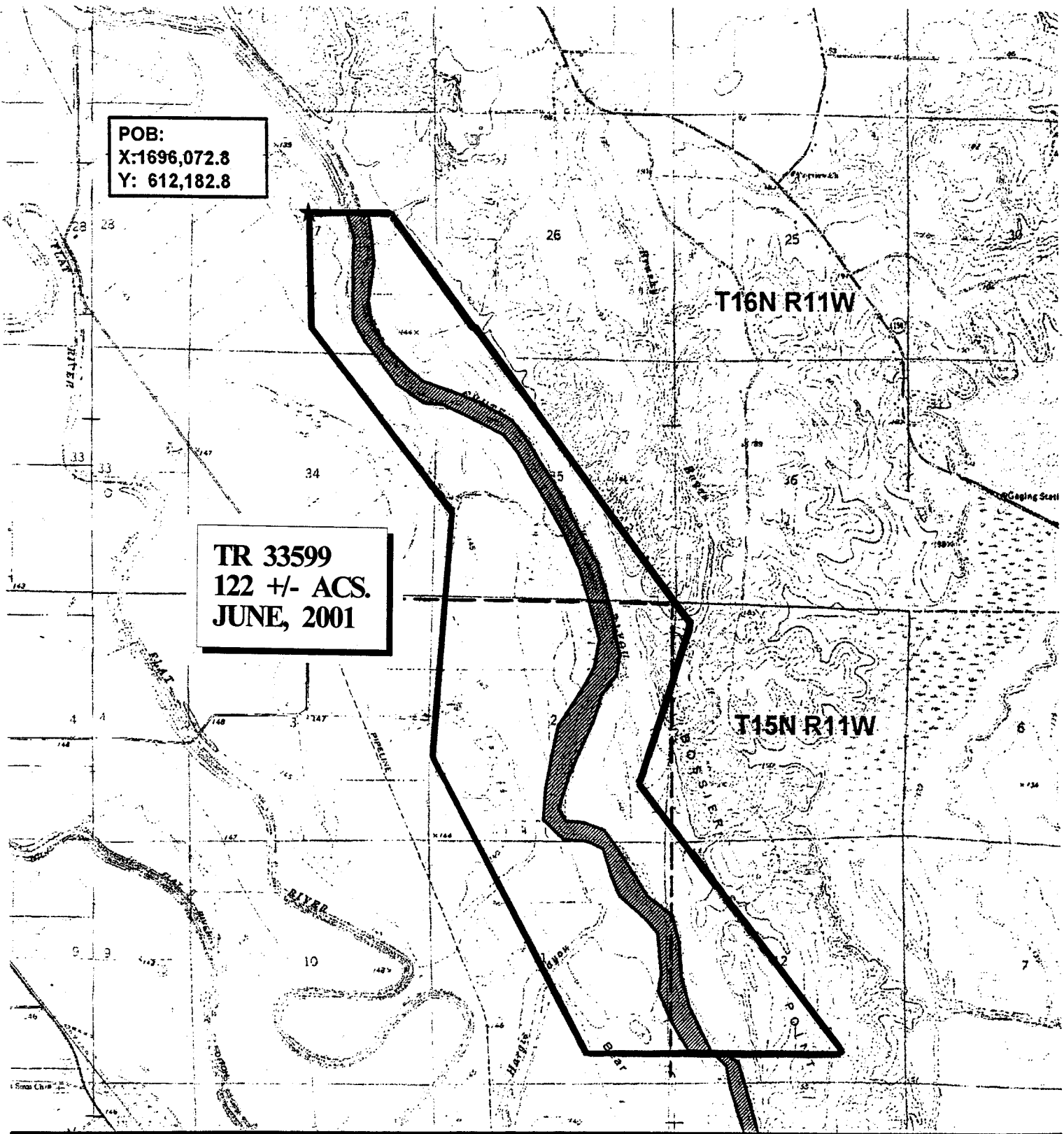
All of the lands now or formerly constituting the beds and bottoms of all water bodies of every nature and description and all islands and other lands formed by accretion or reliction, except tax lands, owned by and not under mineral lease from the State of Louisiana on June 13, 2001, situated in Bossier Parish, Louisiana, within the following described boundaries: Beginning at a point having Coordinates of X = 1,696,072.8 and Y = 612,182.8; thence Southerly to a point having Coordinates of X = 1,696,054.8 and Y = 609,650.8; thence Southerly to a point having Coordinates of X = 1,699,131.9 and Y = 605,659.2; thence Southerly to a point having Coordinates of X = 1,698,633.6 and Y = 600,260.2; thence Southerly to a point having Coordinates of X = 1,701,956.1 and Y = 593,925.6; thence Easterly to a point having Coordinates of X = 1,707,642.1 and Y = 593,939.7; thence Northerly to a point having Coordinates of X = 1,703,139.6 and Y = 599,718.7; thence Northerly to a point having Coordinates of X = 1,704,384.6 and Y = 603,268.7; thence Northerly to a point having Coordinates of X = 1,697,868.2 and Y = 612,176.1; thence Westerly back to the point of beginning, **LESS AND EXCEPT** all that portion of State Lease No. 16397 that lies within the above described tract, containing approximately 122 acres, as shown outlined in red on a plat on file in the Office of Mineral Resources, Department of Natural Resources. All bearings, distances and coordinates are based on Louisiana Coordinate System of 1927 (North Zone).

NOTE: The boundary description and plat for this tract as shown and as advertised were supplied by the nominating party and have not been checked for accuracy by the staff of the Office of Mineral Resources. Anything which may affect the acreage, the shape or the location of the tract, such as non-closure of or incorrect X, Y coordinates or title disputed acreage, or which may affect the status of the tract for leasing, such as overlap of prior leases or nominated tracts, or which may affect potential operations on leases taken, such as inclusion in areas under the jurisdiction of the Department of Wildlife and Fisheries, will not be specifically determined unless and until a bid on this tract is accepted by the Mineral Board; which bid will be accepted on a per acre basis and which acceptance will be conditional upon such specific determinations being made. Once a bid is conditionally accepted by the Mineral Board, the staff will, within a period following the date of the lease sale, determine the acreage, shape and location of the potential lease area of the tract, the status for leasing of all or any portion thereof, and any conditions which may affect potential operations thereon. These determinations may render all or a portion of the bid area unleaseable or may increase or decrease the State claimed acreage such that the total bonus/rental ultimately required may either exceed the bonus/rental paid at the lease sale, which will require additional payment by the successful bidder, or allow the successful bidder a refund of excessive payment. The successful bidder will be notified of the determinations by the staff and given an opportunity to view the bid area acreage, configuration and location as it has been specifically determined. If all or a portion of the bid area is unleaseable due to overlap of an existing lease, the successful bidder will be given an opportunity to accept or reject a new lease on that portion of the bid area which is not unleaseable. If rejected, the

bid and all monies accompanying the bid will be returned to the successful bidder and no lease will be issued. In all other cases a new lease will be issued and any additional per acre bonus/rental, 10% administration fee or \$10 and \$5 per acre fees due as a result of staff determination of more State acreage in the bid area than determined by the successful bidder will be paid prior to the lease being issued. A determination of less State acreage in the bid area will result in a return to the successful bidder of any overpayment.

Applicant: Chris Aymond

Bidder	Cash Payment	Price / Acre	Rental	Oil	Gas	Other



Bid B Bossier Parish, Louisiana
T16N R11W
T15N R11W

Water Acreage: 221.6

Scale: 1" - 3,000'