

**Bid A: Caddo and Bossier Parish, Louisiana**

**T15N R11W Sections: 7, 6**

**T15N R12W Sections: 12, 1, 2**

**T16N R12W Sections: 36, 35, 27, 26**

**Water Acreage: 649.8**

**Scale: 1" - 3,000'**

TRACT 33510 - WITHDRAWN PER APPLICANT

**TRACT 33511 - Bienville, Bossier and Caddo Parishes, Louisiana**

All of the lands now or formerly constituting the beds and bottoms of all water bodies of every nature and description and all islands and other lands formed by accretion or reliction, except tax lands, owned by and not under mineral lease from the State of Louisiana on June 13, 2001, situated in Bienville, Bossier and Caddo Parishes, Louisiana, within the following described boundaries: Beginning at a point having Coordinates of X = 1,703,925.8 and Y = 593,939.5; thence Southerly to a point having Coordinates of X = 1,703,741.5 and Y = 580,468.1; thence Westerly to a point having Coordinates of X = 1,696,760.5 and Y = 580,448.3; thence Southerly to a point having Coordinates of X = 1,696,734.0 and Y = 575,664.7; thence Easterly to a point having Coordinates of X = 1,714,266.6 and Y = 575,723.9; thence Northerly to a point having Coordinates of X = 1,714,427.9 and Y = 585,665.1; thence Westerly to a point having Coordinates of X = 1,708,206.8 and Y = 585,591.3; thence Northerly to a point having Coordinates of X = 1,707,642.1 and Y = 593,939.7; thence Westerly back to the point of beginning, containing approximately **796.5 acres**, as shown outlined in red on a plat on file in the Office of Mineral Resources, Department of Natural Resources, as provided by the applicant. All bearings, distances and coordinates are based on Louisiana Coordinate System of 1927 (North Zone).

NOTE: The boundary description and plat for this tract as shown and as advertised were supplied by the nominating party and have not been checked for accuracy by the staff of the Office of Mineral Resources. Anything which may affect the acreage, the shape or the location of the tract, such as non-closure of or incorrect X, Y coordinates or title disputed acreage, or which may affect the status of the tract for leasing, such as overlap of prior leases or nominated tracts, or which may affect potential operations on leases taken, such as inclusion in areas under the jurisdiction of the Department of Wildlife and Fisheries, will not be specifically determined unless and until a bid on this tract is accepted by the Mineral Board; which bid will be accepted on a per acre basis and which acceptance will be conditional upon such specific determinations being made. Once a bid is conditionally accepted by the Mineral Board, the staff will, within a period following the date of the lease sale, determine the acreage, shape and location of the potential lease area of the tract, the status for leasing of all or any portion thereof, and any conditions which may affect potential operations thereon. These determinations may render all or a portion of the bid area unleaseable or may increase or decrease the State claimed acreage such that the total bonus/rental ultimately required may either exceed the bonus/rental paid at the lease sale, which will require additional payment by the successful bidder, or allow the successful bidder a refund of excessive payment. The successful bidder will be notified of the determinations by the staff and given an opportunity to view the bid area acreage, configuration and location as it has been specifically determined. If all or a portion of the bid area is unleaseable due to overlap of an existing lease, the successful bidder will be given an opportunity to accept or reject a new lease on that portion of the bid area which is not unleaseable. If rejected, the bid and all monies accompanying the bid will be returned to the successful bidder and no lease will be issued. In all other cases

a new lease will be issued and any additional per acre bonus/rental, 10% administration fee or \$10 and \$5 per acre fees due as a result of staff determination of more State acreage in the bid area than determined by the successful bidder will be paid prior to the lease being issued. A determination of less State acreage in the bid area will result in a return to the successful bidder of any overpayment.

Applicant: Chris Aymond

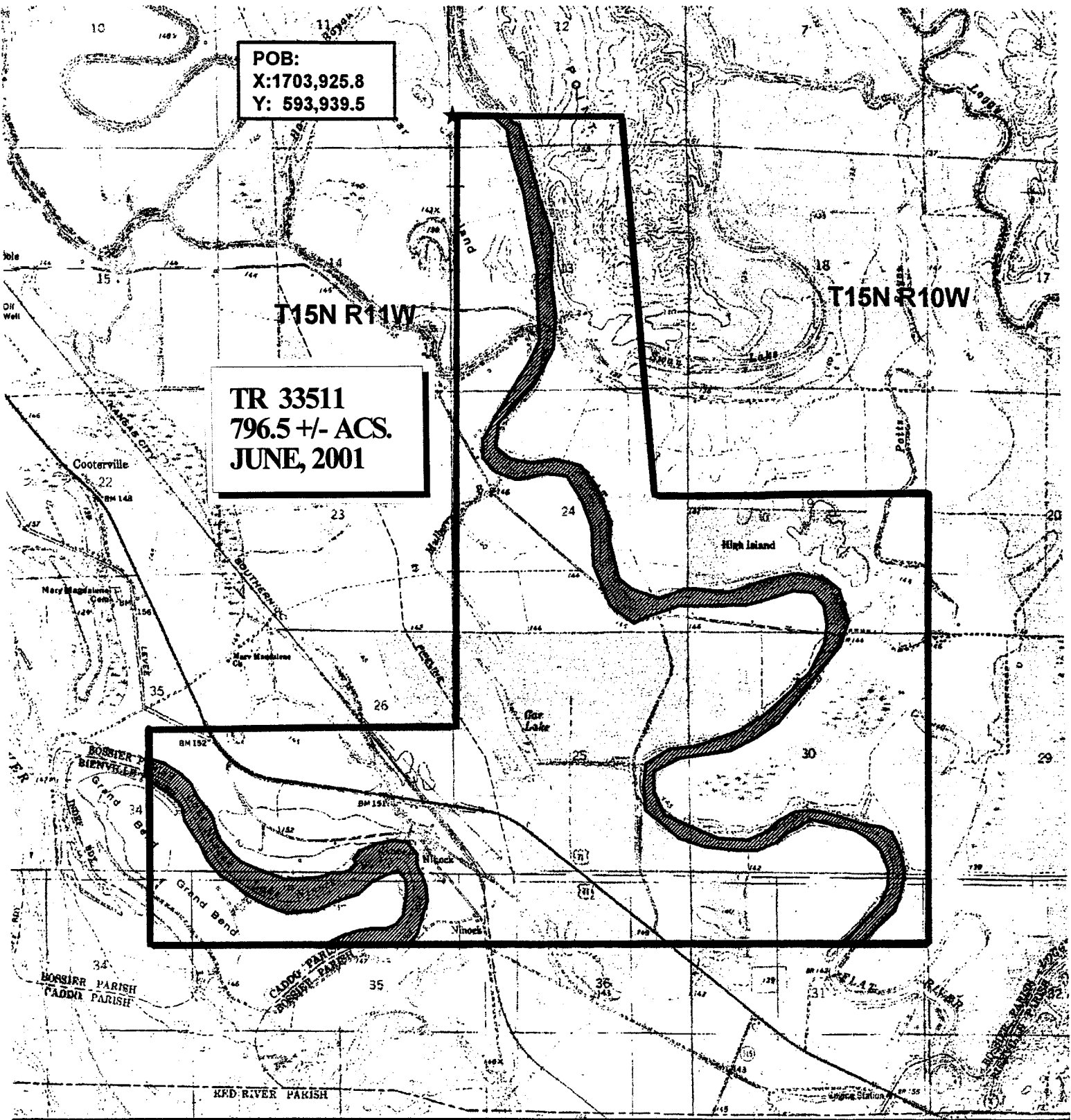
Bidder	Cash Payment	Price / Acre	Rental	Oil	Gas	Other

POB:  
X:1703,925.8  
Y: 593,939.5

T15N R11W

T15N R10W

TR 33511  
796.5 +/- ACS.  
JUNE, 2001



Bid 2: Bossier Parish, Louisiana  
T15N R11W Sections: 13, 24, 25, 11, 12  
T15N R10W Sections: 31, 30, 29

Water Acreage: 796.5

Scale: 1" - 3,000'

**TRACT 33512 - DeSoto and Red River Parishes, Louisiana**

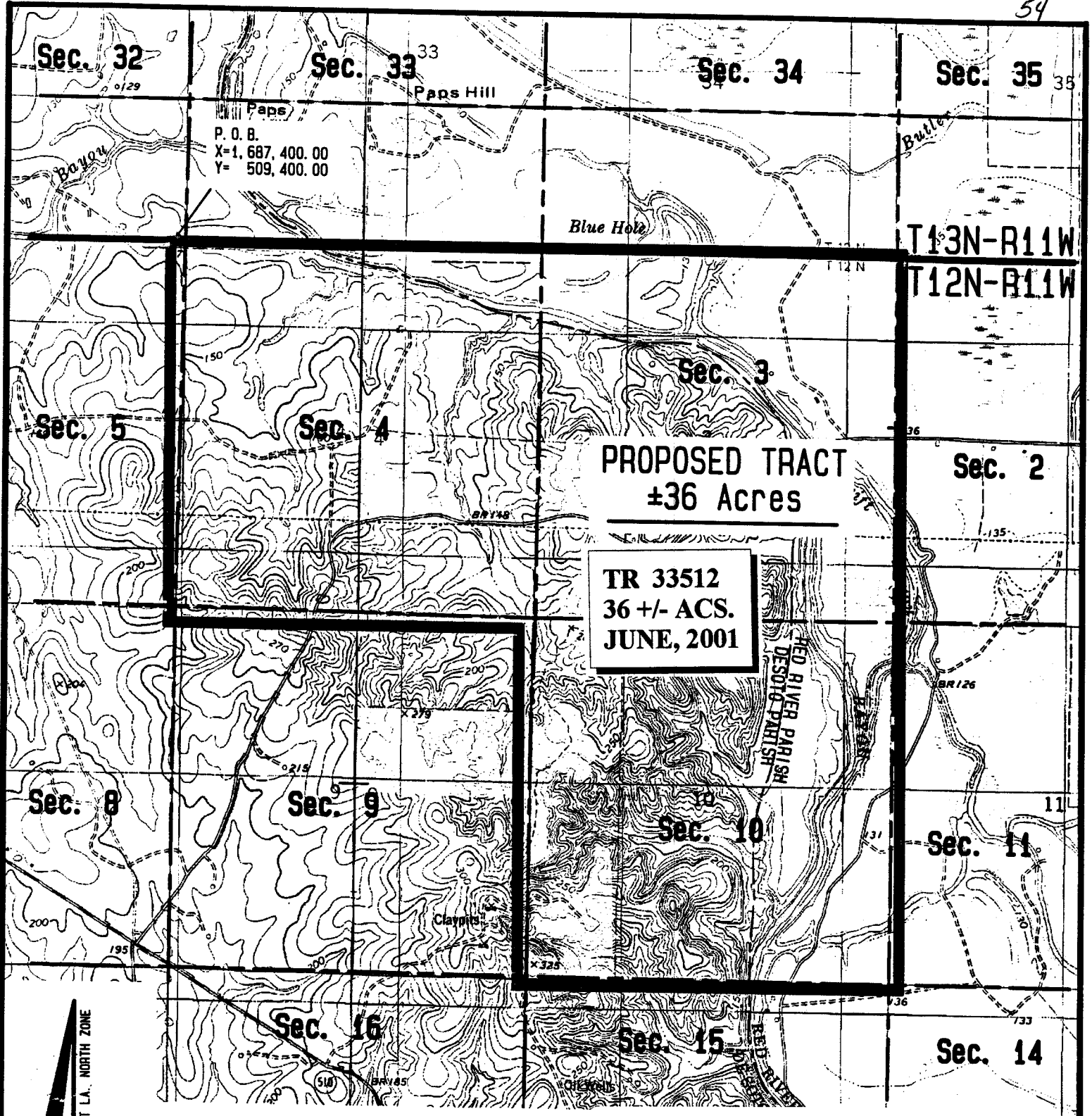
All of the lands now or formerly constituting the beds and bottoms of all water bodies of every nature and description and all islands and other lands formed by accretion or reliction, except tax lands, owned by and not under mineral lease from the State of Louisiana on June 13, 2001, situated in DeSoto and Red River Parishes, Louisiana, within the following described boundaries: Beginning at a point having Coordinates of X = 1,687,400.00 and Y = 509,400.00; thence East 10,800.00 feet to a point having Coordinates of X = 1,698,200.00 and Y = 509,400.00; thence South 10,700.00 feet to a point having Coordinates of X = 1,698,200.00 and Y = 498,700.00; thence West 5,600.00 feet to a point having Coordinates of X = 1,692,600.00 and Y = 498,700.00; thence North 5,200.00 feet to a point having Coordinates of X = 1,692,600.00 and Y = 503,900.00; thence West 5,200.00 feet to a point having Coordinates of X = 1,687,400.00 and Y = 503,900.00; thence North 5,500.00 feet to the point of beginning, containing approximately 36 acres, as shown outlined in red on a plat on file in the Office of Mineral Resources, Department of Natural Resources, as provided by the applicant. All bearings, distances and coordinates are based on Louisiana Coordinate System of 1927 (North Zone).

NOTE: The boundary description and plat for this tract as shown and as advertised were supplied by the nominating party and have not been checked for accuracy by the staff of the Office of Mineral Resources. Anything which may affect the acreage, the shape or the location of the tract, such as non-closure of or incorrect X, Y coordinates or title disputed acreage, or which may affect the status of the tract for leasing, such as overlap of prior leases or nominated tracts, or which may affect potential operations on leases taken, such as inclusion in areas under the jurisdiction of the Department of Wildlife and Fisheries, will not be specifically determined unless and until a bid on this tract is accepted by the Mineral Board; which bid will be accepted on a per acre basis and which acceptance will be conditional upon such specific determinations being made. Once a bid is conditionally accepted by the Mineral Board, the staff will, within a period following the date of the lease sale, determine the acreage, shape and location of the potential lease area of the tract, the status for leasing of all or any portion thereof, and any conditions which may affect potential operations thereon. These determinations may render all or a portion of the bid area unleaseable or may increase or decrease the State claimed acreage such that the total bonus/rental ultimately required may either exceed the bonus/rental paid at the lease sale, which will require additional payment by the successful bidder, or allow the successful bidder a refund of excessive payment. The successful bidder will be notified of the determinations by the staff and given an opportunity to view the bid area acreage, configuration and location as it has been specifically determined. If all or a portion of the bid area is unleaseable due to overlap of an existing lease, the successful bidder will be given an opportunity to accept or reject a new lease on that portion of the bid area which is not unleaseable. If rejected, the bid and all monies accompanying the bid will be returned to the successful bidder and no lease will be issued. In all other cases a new lease will be issued and any additional per acre bonus/rental,

10% administration fee or \$10 and \$5 per acre fees due as a result of staff determination of more State acreage in the bid area than determined by the successful bidder will be paid prior to the lease being issued. A determination of less State acreage in the bid area will result in a return to the successful bidder of any overpayment.

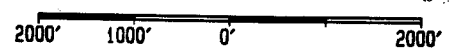
Applicant: Long Petroleum, L.L.C.

Bidder	Cash Payment	Price / Acre	Rental	Oil	Gas	Other



Topography obtained from U.S. Geological Survey  
Quadrangles "DESOTO, LA." & "RED RIVER, LA."

Hed River & Desoto Parishes, Louisiana





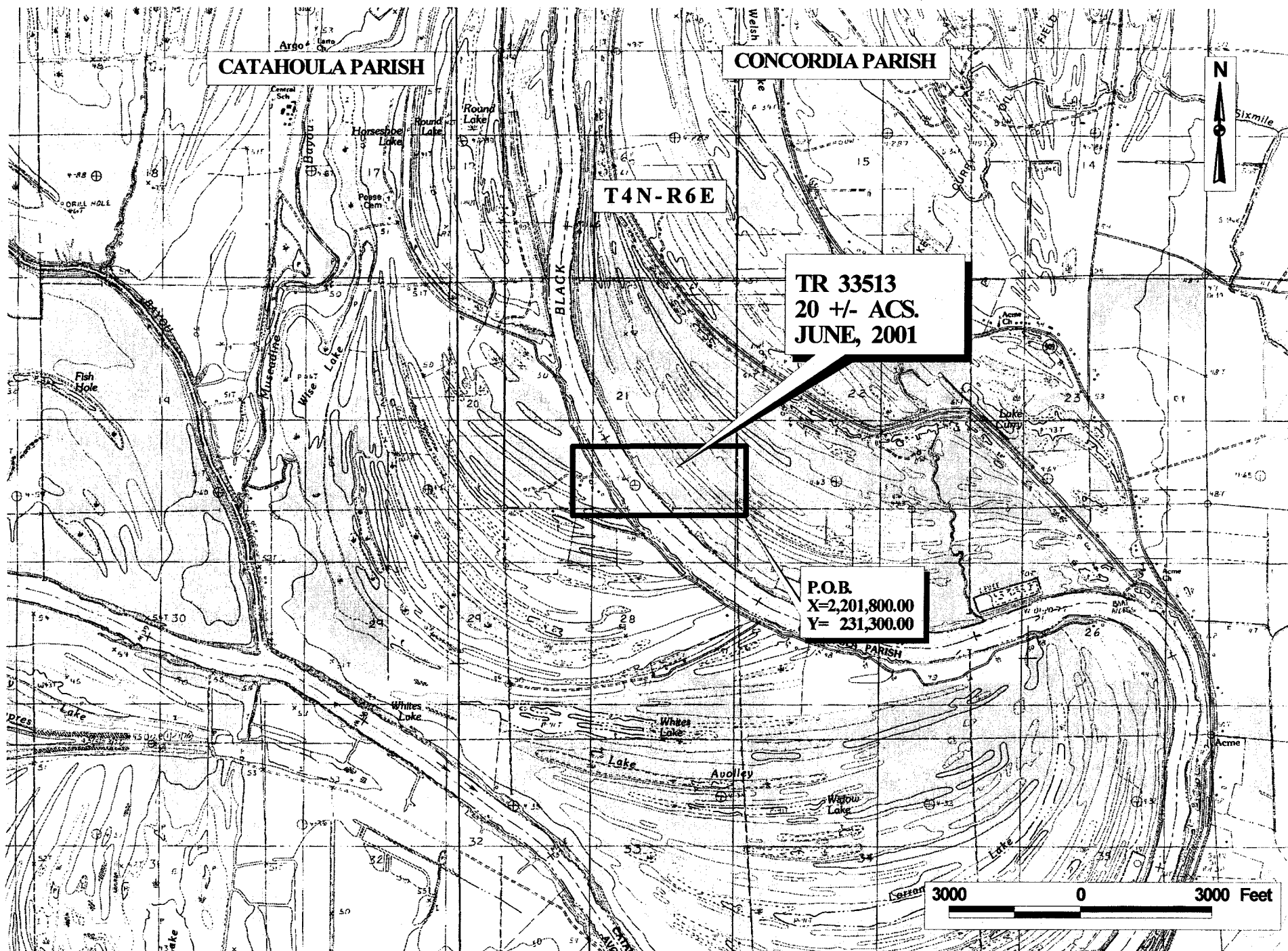
**TRACT 33513 - Catahoula and Concordia Parishes, Louisiana**

All of the lands now or formerly constituting the beds and bottoms of Black River and all islands and other lands formed by accretion or reliction, except tax lands, owned by and not under mineral lease from the State of Louisiana on June 13, 2001, situated in Catahoula and Concordia Parishes, Louisiana, within the following described boundaries: Beginning at a point having Coordinates of X = 2,201,800.00 and Y = 231,300.00; thence West 3,960.00 feet; thence North 1,600.00 feet to a point having Coordinates of X = 2,197,840.00 and Y = 232,900.00; thence East 3,960.00 feet to a point; thence South 1,600.00 feet to the point of beginning, containing approximately 20 acres, as shown outlined in red on a plat on file in the Office of Mineral Resources, Department of Natural Resources, as provided by the applicant. All bearings, distances and coordinates are based on Louisiana Coordinate System of 1927 (North Zone).

NOTE: The boundary description and plat for this tract as shown and as advertised were supplied by the nominating party and have not been checked for accuracy by the staff of the Office of Mineral Resources. Anything which may affect the acreage, the shape or the location of the tract, such as non-closure of or incorrect X, Y coordinates or title disputed acreage, or which may affect the status of the tract for leasing, such as overlap of prior leases or nominated tracts, or which may affect potential operations on leases taken, such as inclusion in areas under the jurisdiction of the Department of Wildlife and Fisheries, will not be specifically determined unless and until a bid on this tract is accepted by the Mineral Board; which bid will be accepted on a per acre basis and which acceptance will be conditional upon such specific determinations being made. Once a bid is conditionally accepted by the Mineral Board, the staff will, within a period following the date of the lease sale, determine the acreage, shape and location of the potential lease area of the tract, the status for leasing of all or any portion thereof, and any conditions which may affect potential operations thereon. These determinations may render all or a portion of the bid area unleaseable or may increase or decrease the State claimed acreage such that the total bonus/rental ultimately required may either exceed the bonus/rental paid at the lease sale, which will require additional payment by the successful bidder, or allow the successful bidder a refund of excessive payment. The successful bidder will be notified of the determinations by the staff and given an opportunity to view the bid area acreage, configuration and location as it has been specifically determined. If all or a portion of the bid area is unleaseable due to overlap of an existing lease, the successful bidder will be given an opportunity to accept or reject a new lease on that portion of the bid area which is not unleaseable. If rejected, the bid and all monies accompanying the bid will be returned to the successful bidder and no lease will be issued. In all other cases a new lease will be issued and any additional per acre bonus/rental, 10% administration fee or \$10 and \$5 per acre fees due as a result of staff determination of more State acreage in the bid area than determined by the successful bidder will be paid prior to the lease being issued. A determination of less State acreage in the bid area will result in a return to the successful bidder of any overpayment.

Applicant: Claude Rabb

Bidder	Cash Payment	Price / Acre	Rental	Oil	Gas	Other



CATAHOULA PARISH

CONCORDIA PARISH

T4N-R6E

TR 33513  
20 +/- ACS.  
JUNE, 2001

P.O.B.  
X=2,201,800.00  
Y= 231,300.00

3000 0 3000 Feet

**TRACT 33514 - Calcasieu Parish, Louisiana**

All of the lands now or formerly constituting the beds and bottoms of Sabine River and all islands and other lands formed by accretion or reliction, except tax lands, owned by and not under mineral lease from the State of Louisiana on June 13, 2001, situated in Calcasieu Parish, Louisiana, within the following described boundaries: Beginning at a point having Coordinates of X = 1,236,200.00 and Y = 614,749.00; thence West 5,000.00 feet to a point; thence North 10,000.00 feet to a point having Coordinates of X = 1,231,200.00 and Y = 624,749.00; thence East 5,000.00 feet to a point; thence South 44 degrees 46 minutes 00 seconds East 1,562.01 feet to a point having Coordinates of X = 1,237,300.00 and Y = 623,640.00; thence East 1,000.00 feet to a point having Coordinates of X = 1,238,300.00 and Y = 623,640.00; thence South 13 degrees 17 minutes 22 seconds West 9,135.64 feet to the point of beginning, containing approximately **34 acres**, as shown outlined in red on a plat on file in the Office of Mineral Resources, Department of Natural Resources, as provided by the applicant, **LESS AND EXCEPT** that portion thereof, if any, located West of the boundary line between the States of Texas and Louisiana as determined by the report of the Special Master in litigation in the Supreme Court of the United States styled Texas v. Louisiana et al No. 36 Original, or as otherwise approved by said court. All bearings, distances and coordinates are based on Louisiana Coordinate System of 1927 (South Zone). All bearings, distances and coordinates are based on Louisiana Coordinate System of 1927 (South Zone).

NOTE: The boundary description and plat for this tract as shown and as advertised were supplied by the nominating party and have not been checked for accuracy by the staff of the Office of Mineral Resources. Anything which may affect the acreage, the shape or the location of the tract, such as non-closure of or incorrect X, Y coordinates or title disputed acreage, or which may affect the status of the tract for leasing, such as overlap of prior leases or nominated tracts, or which may affect potential operations on leases taken, such as inclusion in areas under the jurisdiction of the Department of Wildlife and Fisheries, will not be specifically determined unless and until a bid on this tract is accepted by the Mineral Board; which bid will be accepted on a per acre basis and which acceptance will be conditional upon such specific determinations being made. Once a bid is conditionally accepted by the Mineral Board, the staff will, within a period following the date of the lease sale, determine the acreage, shape and location of the potential lease area of the tract, the status for leasing of all or any portion thereof, and any conditions which may affect potential operations thereon. These determinations may render all or a portion of the bid area unleaseable or may increase or decrease the State claimed acreage such that the total bonus/rental ultimately required may either exceed the bonus/rental paid at the lease sale, which will require additional payment by the successful bidder, or allow the successful bidder a refund of excessive payment. The successful bidder will be notified of the determinations by the staff and given an opportunity to view the bid area acreage, configuration and location as it has been specifically determined. If all or a portion of the bid area is unleaseable due to overlap of an existing lease, the successful bidder will be given an opportunity to accept or reject a new lease on that