

BLK. 6

TR 33571
2,184 +/- ACS.
JUNE, 2001

LAKE BORGNE

P.O.B.

X = 2,562,813.95'
Y = 491,442.60'

ST. BERNARD PARISH

Map Scale- 1"=2000'

TRACT 33572 - PORTION OF BLOCK 9, NORTH LAKE BORGNE AREA, St. Bernard and St. Tammany Parishes, Louisiana

All of the lands now or formerly constituting the beds and bottoms of all water bodies of every nature and description and all islands and other lands formed by accretion or reliction, except tax lands, belonging to the State of Louisiana and not under mineral lease on June 13, 2001, situated in St. Bernard and St. Tammany Parishes, Louisiana, and more particularly described as follows: Beginning at a point on the South boundary of Block 9, North Lake Borgne Area, having Coordinates of X = 2,580,750.00 and Y = 538,958.70; thence West 8,500.00 feet along the South boundary of said Block 9 to its Southwest corner having Coordinates of X = 2,572,250.00 and Y = 538,958.70; thence North approximately 14,400 feet along the West boundary of said Block 9 to its Northwest corner on the boundary between the States of Louisiana and Mississippi having a Coordinate of X = 2,572,250.00; thence Southeasterly, Easterly and Northeasterly along the said boundary between Louisiana and Mississippi to an intersection point with a North-South line having a Coordinate of X = 2,580,750.00; thence South approximately 9,625 feet to the point of beginning, containing approximately 1,862 acres, as shown outlined in red on a plat on file in the Office of Mineral Resources, Department of Natural Resources, as provided by the applicant. All bearings, distances and coordinates are based on Louisiana Coordinate System of 1927 (South Zone).

NOTE: The boundary description and plat for this tract as shown and as advertised were supplied by the nominating party and have not been checked for accuracy by the staff of the Office of Mineral Resources. Anything which may affect the acreage, the shape or the location of the tract, such as non-closure of or incorrect X, Y coordinates or title disputed acreage, or which may affect the status of the tract for leasing, such as overlap of prior leases or nominated tracts, or which may affect potential operations on leases taken, such as inclusion in areas under the jurisdiction of the Department of Wildlife and Fisheries, will not be specifically determined unless and until a bid on this tract is accepted by the Mineral Board; which bid will be accepted on a per acre basis and which acceptance will be conditional upon such specific determinations being made. Once a bid is conditionally accepted by the Mineral Board, the staff will, within a period following the date of the lease sale, determine the acreage, shape and location of the potential lease area of the tract, the status for leasing of all or any portion thereof, and any conditions which may affect potential operations thereon. These determinations may render all or a portion of the bid area unleaseable or may increase or decrease the State claimed acreage such that the total bonus/rental ultimately required may either exceed the bonus/rental paid at the lease sale, which will require additional payment by the successful bidder, or allow the successful bidder a refund of excessive payment. The successful bidder will be notified of the determinations by the staff and given an opportunity to view the bid area acreage, configuration and location as it has been specifically determined. If all or a portion of the bid area is unleaseable due to overlap of an existing lease, the successful bidder will be given an opportunity to accept or reject a new lease on that portion of the bid area which is not unleaseable. If rejected, the bid and all monies accompanying the bid will be returned to the

successful bidder and no lease will be issued. In all other cases a new lease will be issued and any additional per acre bonus/rental, 10% administration fee or \$10 and \$5 per acre fees due as a result of staff determination of more State acreage in the bid area than determined by the successful bidder will be paid prior to the lease being issued. A determination of less State acreage in the bid area will result in a return to the successful bidder of any overpayment.

NOTE: The Office of Mineral Resources will require a minimum bonus of \$250.00 per acre and a minimum royalty of 22%.

NOTE: The above tract is located in or near an oyster restricted area and all operations in such area must be conducted in strict conformity with the stipulations and/or regulations of the Louisiana Department of Wildlife and Fisheries.

NOTE: The State of Louisiana does hereby reserve, and this lease shall be subject to, the imprescriptible right of surface use in the nature of a servitude in favor of the Department of Natural Resources, including its Offices and Commissions, for the sole purpose of implementing, constructing, servicing and maintaining approved coastal zone management and/or restoration projects. Utilization of any and all rights derived under this lease by the mineral lessee, its agents, successors or assigns, shall not interfere with nor hinder the reasonable surface use by the Department of Natural Resources, its Offices or Commissions, as hereinabove reserved.

Applicant: Louisiana Oil and Gas, Inc.

Bidder	Cash Payment	Price / Acre	Rental	Oil	Gas	Other

BLK. 1

BLK. 2

BOUNDARY

TR 33572
1,862 +/- ACS.
JUNE, 2001

P.O.B.

X = 2,580,750.00'
Y = 538,958.70'

BLK. 9

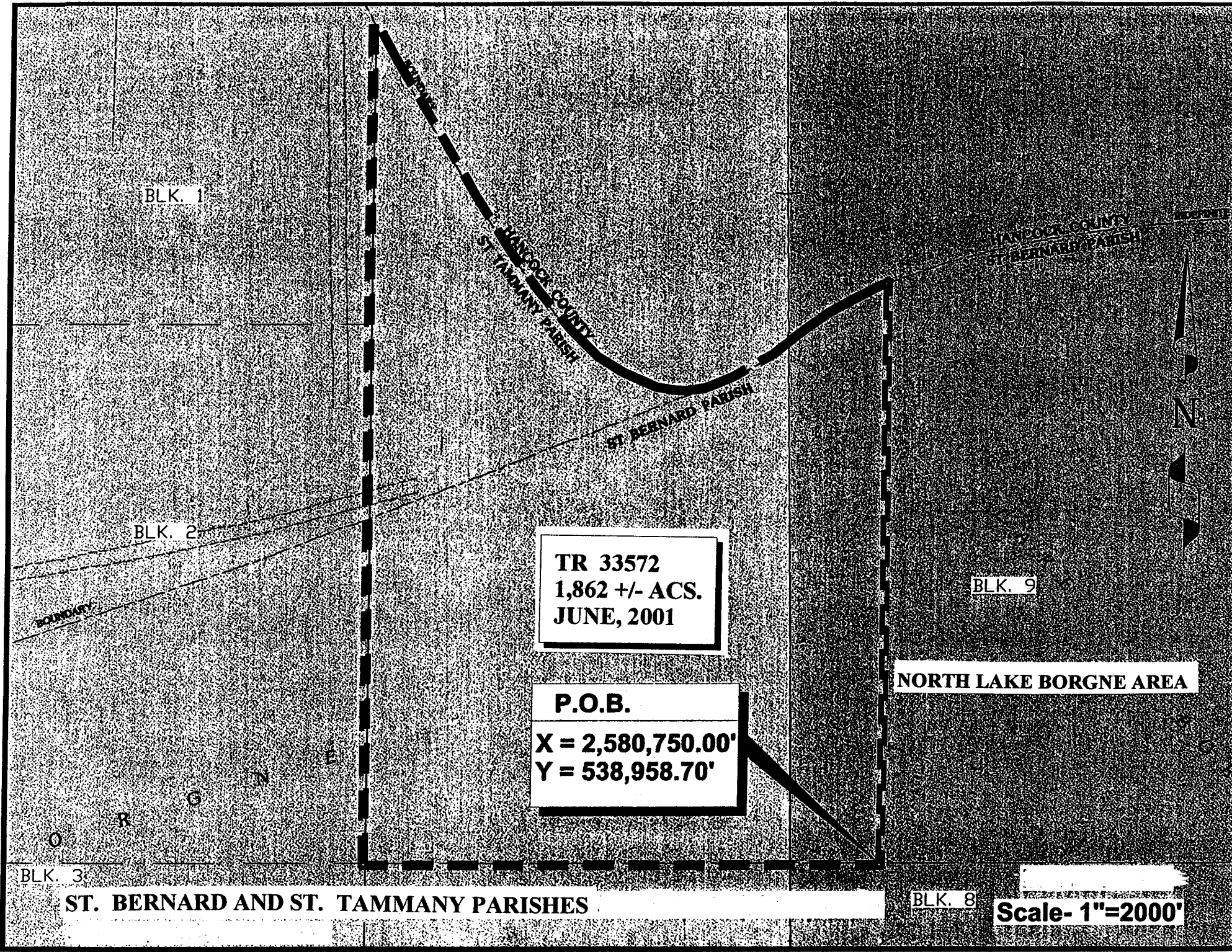
NORTH LAKE BORGNE AREA

BLK. 3

ST. BERNARD AND ST. TAMMANY PARISHES

BLK. 8

Scale- 1"=2000'



TRACT 33573 - PORTION OF BLOCK 8, NORTH LAKE BORGNE AREA, St. Bernard Parish, Louisiana

All of the lands now or formerly constituting the beds and bottoms of all water bodies of every nature and description and all islands and other lands formed by accretion or reliction, except tax lands, belonging to the State of Louisiana and not under mineral lease on June 13, 2001, situated in St. Bernard Parish, Louisiana, and more particularly described as follows: Beginning at the Northwest corner of Block 8, North Lake Borgne Area, having Coordinates of X = 2,572,250.00 and Y = 538,958.70; thence East 8,500.00 feet to a point having Coordinates of X = 2,580,750.00 and Y = 538,958.70; thence South 9,000.00 feet to a point having Coordinates of X = 2,580,750.00 and Y = 529,958.70; thence West 8,500.00 feet to a point having Coordinates of X = 2,572,250.00 and Y = 529,958.70; thence North 9,000.00 feet to the point of beginning, containing approximately 1,756.20 acres, as shown outlined in red on a plat on file in the Office of Mineral Resources, Department of Natural Resources, as provided by the applicant. All bearings, distances and coordinates are based on Louisiana Coordinate System of 1927 (South Zone).

NOTE: The boundary description and plat for this tract as shown and as advertised were supplied by the nominating party and have not been checked for accuracy by the staff of the Office of Mineral Resources. Anything which may affect the acreage, the shape or the location of the tract, such as non-closure of or incorrect X, Y coordinates or title disputed acreage, or which may affect the status of the tract for leasing, such as overlap of prior leases or nominated tracts, or which may affect potential operations on leases taken, such as inclusion in areas under the jurisdiction of the Department of Wildlife and Fisheries, will not be specifically determined unless and until a bid on this tract is accepted by the Mineral Board; which bid will be accepted on a per acre basis and which acceptance will be conditional upon such specific determinations being made. Once a bid is conditionally accepted by the Mineral Board, the staff will, within a period following the date of the lease sale, determine the acreage, shape and location of the potential lease area of the tract, the status for leasing of all or any portion thereof, and any conditions which may affect potential operations thereon. These determinations may render all or a portion of the bid area unleaseable or may increase or decrease the State claimed acreage such that the total bonus/rental ultimately required may either exceed the bonus/rental paid at the lease sale, which will require additional payment by the successful bidder, or allow the successful bidder a refund of excessive payment. The successful bidder will be notified of the determinations by the staff and given an opportunity to view the bid area acreage, configuration and location as it has been specifically determined. If all or a portion of the bid area is unleaseable due to overlap of an existing lease, the successful bidder will be given an opportunity to accept or reject a new lease on that portion of the bid area which is not unleaseable. If rejected, the bid and all monies accompanying the bid will be returned to the successful bidder and no lease will be issued. In all other cases a new lease will be issued and any additional per acre bonus/rental, 10% administration fee or \$10 and \$5 per acre fees due as a result of staff determination of more State acreage in the bid area than

determined by the successful bidder will be paid prior to the lease being issued. A determination of less State acreage in the bid area will result in a return to the successful bidder of any overpayment.

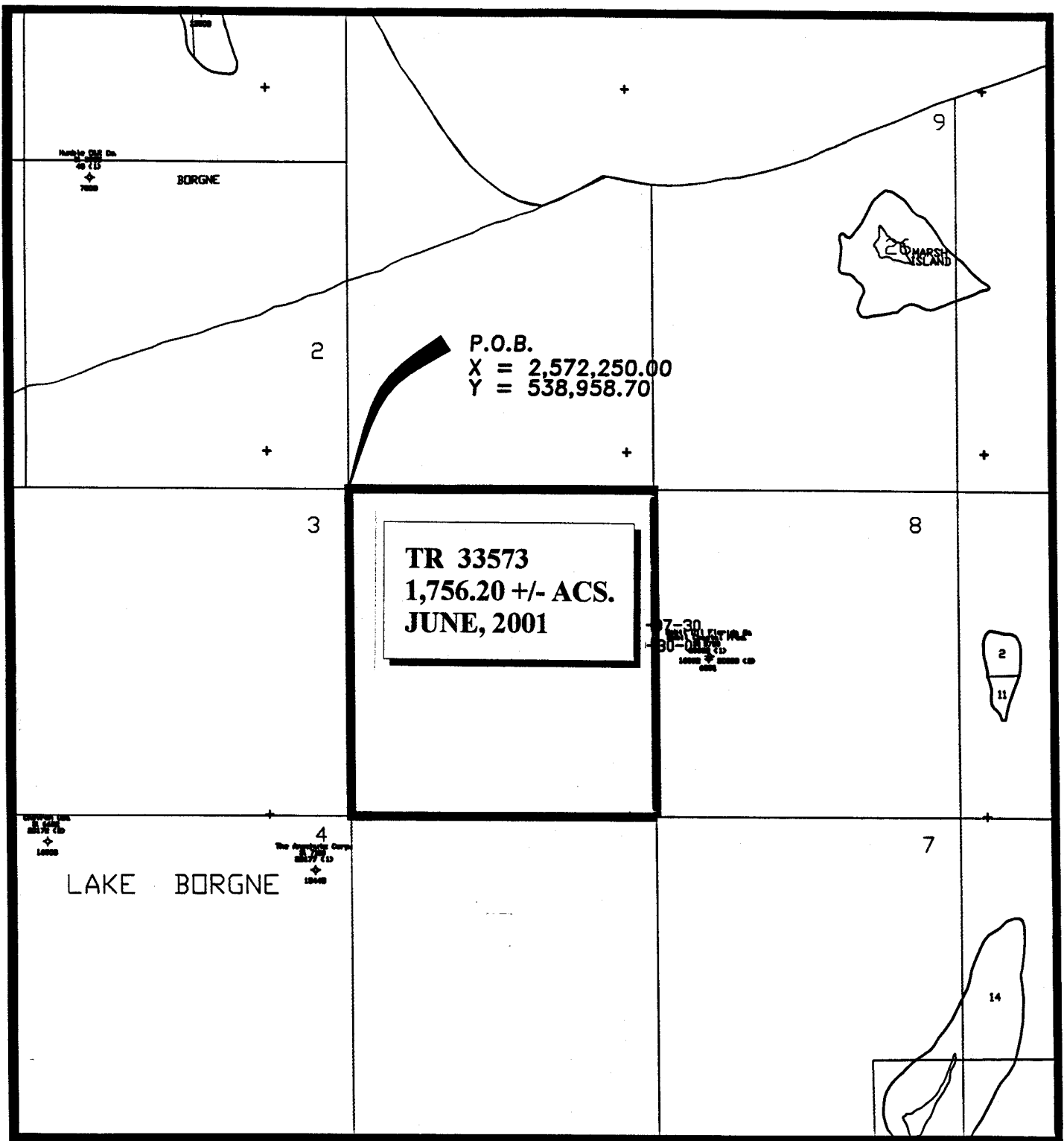
NOTE: The Office of Mineral Resources will require a minimum bonus of \$250.00 per acre and a minimum royalty of 22%.

NOTE: The above tract is located in or near an oyster restricted area and all operations in such area must be conducted in strict conformity with the stipulations and/or regulations of the Louisiana Department of Wildlife and Fisheries.

NOTE: The State of Louisiana does hereby reserve, and this lease shall be subject to, the imprescriptible right of surface use in the nature of a servitude in favor of the Department of Natural Resources, including its Offices and Commissions, for the sole purpose of implementing, constructing, servicing and maintaining approved coastal zone management and/or restoration projects. Utilization of any and all rights derived under this lease by the mineral lessee, its agents, successors or assigns, shall not interfere with nor hinder the reasonable surface use by the Department of Natural Resources, its Offices or Commissions, as hereinabove reserved.

Applicant: Louisiana Oil and Gas, Inc.

Bidder	Cash Payment	Price / Acre	Rental	Oil	Gas	Other



THE DATA USED TO PRODUCE
THIS MAP IS COPYRIGHTED BY
TOBIN INTERNATIONAL, LTD.,
AND ALL RIGHTS ARE RESERVED
BY TOBIN INTERNATIONAL, LTD.

NORTH LAKE BORGNE AREA

St. Bernard Parish, Louisiana

SCALE: 1" = 4000'

TRACT 33574 - PORTION OF BLOCK 7, NORTH LAKE BORGNE AREA, St. Bernard Parish, Louisiana

All of the lands now or formerly constituting the beds and bottoms of all water bodies of every nature and description and all islands and other lands formed by accretion or reliction, except tax lands, belonging to the State of Louisiana and not under mineral lease on June 13, 2001, situated in St. Bernard Parish, Louisiana, and more particularly described as follows: Beginning at a point on the South boundary of Block 7, North Lake Borgne Area, having Coordinates of X = 2,580,750.00 and Y = 520,958.70; thence West 8,500.00 feet along the South boundary of said Block 7 to its Southwest corner having Coordinates of X = 2,572,250.00 and Y = 520,958.70; thence North 9,000.00 feet along the West boundary of said Block 7 to its Northwest corner having Coordinates of X = 2,572,250.00 and Y = 529,958.70; thence East 8,500.00 feet along the North boundary of said Block 7 to a point having Coordinates of X = 2,580,750.00 and Y = 529,958.70; thence South 9,000.00 feet to the point of beginning, containing approximately 1,756.20 acres, as shown outlined in red on a plat on file in the Office of Mineral Resources, Department of Natural Resources, as provided by the applicant. All bearings, distances and coordinates are based on Louisiana Coordinate System of 1927 (South Zone).

NOTE: The boundary description and plat for this tract as shown and as advertised were supplied by the nominating party and have not been checked for accuracy by the staff of the Office of Mineral Resources. Anything which may affect the acreage, the shape or the location of the tract, such as non-closure of or incorrect X, Y coordinates or title disputed acreage, or which may affect the status of the tract for leasing, such as overlap of prior leases or nominated tracts, or which may affect potential operations on leases taken, such as inclusion in areas under the jurisdiction of the Department of Wildlife and Fisheries, will not be specifically determined unless and until a bid on this tract is accepted by the Mineral Board; which bid will be accepted on a per acre basis and which acceptance will be conditional upon such specific determinations being made. Once a bid is conditionally accepted by the Mineral Board, the staff will, within a period following the date of the lease sale, determine the acreage, shape and location of the potential lease area of the tract, the status for leasing of all or any portion thereof, and any conditions which may affect potential operations thereon. These determinations may render all or a portion of the bid area unleaseable or may increase or decrease the State claimed acreage such that the total bonus/rental ultimately required may either exceed the bonus/rental paid at the lease sale, which will require additional payment by the successful bidder, or allow the successful bidder a refund of excessive payment. The successful bidder will be notified of the determinations by the staff and given an opportunity to view the bid area acreage, configuration and location as it has been specifically determined. If all or a portion of the bid area is unleaseable due to overlap of an existing lease, the successful bidder will be given an opportunity to accept or reject a new lease on that portion of the bid area which is not unleaseable. If rejected, the bid and all monies accompanying the bid will be returned to the successful bidder and no lease will be issued. In all other cases

a new lease will be issued and any additional per acre bonus/rental, 10% administration fee or \$10 and \$5 per acre fees due as a result of staff determination of more State acreage in the bid area than determined by the successful bidder will be paid prior to the lease being issued. A determination of less State acreage in the bid area will result in a return to the successful bidder of any overpayment.

NOTE: The Office of Mineral Resources will require a minimum bonus of \$250.00 per acre and a minimum royalty of 22%.

NOTE: The above tract is located in or near an oyster restricted area and all operations in such area must be conducted in strict conformity with the stipulations and/or regulations of the Louisiana Department of Wildlife and Fisheries.

NOTE: The State of Louisiana does hereby reserve, and this lease shall be subject to, the imprescriptible right of surface use in the nature of a servitude in favor of the Department of Natural Resources, including its Offices and Commissions, for the sole purpose of implementing, constructing, servicing and maintaining approved coastal zone management and/or restoration projects. Utilization of any and all rights derived under this lease by the mineral lessee, its agents, successors or assigns, shall not interfere with nor hinder the reasonable surface use by the Department of Natural Resources, its Offices or Commissions, as hereinabove reserved.

Applicant: Louisiana Oil and Gas, Inc.

Bidder	Cash Payment	Price / Acre	Rental	Oil	Gas	Other

BLK. 3

BLK. 8

BLK. 4

BLK. 7

BLK. 5

TR 33574
1,756.20 +/- ACS.
JUNE, 2001

P.O.B.

X = 2,580,750.00'
Y = 520,958.70'

NORTH LAKE BORGNE AREA

ST. BERNARD PARISH

Malheureux
Scale- 1"=2000'

TRACT 33575 - St. Bernard Parish, Louisiana

All of the lands now or formerly constituting the beds and bottoms of all water bodies of every nature and description and all islands and other lands formed by accretion or reliction, except tax lands, owned by and not under mineral lease from the State of Louisiana on June 13, 2001, situated in St. Bernard Parish, Louisiana, within the following described boundaries: Beginning at a point on the South boundary of Block 7 having Coordinates of X = 2,580,750.00 and Y = 520,958.70; thence South 9,000.00 feet to a point having Coordinates of X = 2,580,750.00 and Y = 511,958.70; thence West 8,500.00 feet to the Southeast corner of Block 5 having Coordinates of X = 2,572,250.00 and Y = 511,958.70; thence North 9,000.00 feet along the East boundary of said Block 5 to its Northeast corner, also being the Southeast corner of Block 4 and the Southwest corner of Block 7 having Coordinates of X = 2,572,250.00 and Y = 520,958.70; thence East 8,500.00 feet along the South boundary of said Block 7 to the point of beginning, containing approximately 1,756.20 acres, as shown outlined in red on a plat on file in the Office of Mineral Resources, Department of Natural Resources, as provided by the applicant. All bearings, distances and coordinates are based on Louisiana Coordinate System of 1927 (South Zone).

NOTE: The boundary description and plat for this tract as shown and as advertised were supplied by the nominating party and have not been checked for accuracy by the staff of the Office of Mineral Resources. Anything which may affect the acreage, the shape or the location of the tract, such as non-closure of or incorrect X, Y coordinates or title disputed acreage, or which may affect the status of the tract for leasing, such as overlap of prior leases or nominated tracts, or which may affect potential operations on leases taken, such as inclusion in areas under the jurisdiction of the Department of Wildlife and Fisheries, will not be specifically determined unless and until a bid on this tract is accepted by the Mineral Board; which bid will be accepted on a per acre basis and which acceptance will be conditional upon such specific determinations being made. Once a bid is conditionally accepted by the Mineral Board, the staff will, within a period following the date of the lease sale, determine the acreage, shape and location of the potential lease area of the tract, the status for leasing of all or any portion thereof, and any conditions which may affect potential operations thereon. These determinations may render all or a portion of the bid area unleaseable or may increase or decrease the State claimed acreage such that the total bonus/rental ultimately required may either exceed the bonus/rental paid at the lease sale, which will require additional payment by the successful bidder, or allow the successful bidder a refund of excessive payment. The successful bidder will be notified of the determinations by the staff and given an opportunity to view the bid area acreage, configuration and location as it has been specifically determined. If all or a portion of the bid area is unleaseable due to overlap of an existing lease, the successful bidder will be given an opportunity to accept or reject a new lease on that portion of the bid area which is not unleaseable. If rejected, the bid and all monies accompanying the bid will be returned to the successful bidder and no lease will be issued. In all other cases a new lease will be issued and any additional per acre bonus/rental,

10% administration fee or \$10 and \$5 per acre fees due as a result of staff determination of more State acreage in the bid area than determined by the successful bidder will be paid prior to the lease being issued. A determination of less State acreage in the bid area will result in a return to the successful bidder of any overpayment.

NOTE: The Office of Mineral Resources will require a minimum bonus of \$225.00 per acre and a minimum royalty of 22%.

NOTE: The above tract is located in or near an oyster restricted area and all operations in such area must be conducted in strict conformity with the stipulations and/or regulations of the Louisiana Department of Wildlife and Fisheries.

NOTE: The State of Louisiana does hereby reserve, and this lease shall be subject to, the imprescriptible right of surface use in the nature of a servitude in favor of the Department of Natural Resources, including its Offices and Commissions, for the sole purpose of implementing, constructing, servicing and maintaining approved coastal zone management and/or restoration projects. Utilization of any and all rights derived under this lease by the mineral lessee, its agents, successors or assigns, shall not interfere with nor hinder the reasonable surface use by the Department of Natural Resources, its Offices or Commissions, as hereinabove reserved.

Applicant: Louisiana Oil and Gas, Inc.

Bidder	Cash Payment	Price / Acre	Rental	Oil	Gas	Other