

THE DATA USED TO PRODUCE
THIS MAP IS COPYRIGHTED BY
TOBIN INTERNATIONAL, LTD.,
AND ALL RIGHTS ARE RESERVED
BY TOBIN INTERNATIONAL, LTD.

St. Bernard Parish, LA

SCALE: 1" = 3000'

TRACT 33552 - St. Bernard Parish, Louisiana

All of the lands now or formerly constituting the beds and bottoms of all water bodies of every nature and description and all islands and other lands formed by accretion or reliction, except tax lands, owned by and not under mineral lease from the State of Louisiana on June 13, 2001, situated in St. Bernard Parish, Louisiana, within the following described boundaries: Beginning at a point having Coordinates of X = 2,539,491.95 and Y = 506,200.65; thence South 7,379.02 feet to a point having Coordinates of X = 2,539,491.95 and Y = 498,821.63; thence West 14,758.05 feet to a point having Coordinates of X = 2,524,733.90 and Y = 498,821.63; thence North 7,379.02 feet to a point having Coordinates of X = 2,524,733.90 and Y = 506,200.65; thence East 14,758.05 feet to the point of beginning, containing approximately **2,500.00 acres**, as shown outlined in red on a plat on file in the Office of Mineral Resources, Department of Natural Resources, as provided by the applicant. All bearings, distances and coordinates are based on Louisiana Coordinate System of 1927 (South Zone).

NOTE: The boundary description and plat for this tract as shown and as advertised were supplied by the nominating party and have not been checked for accuracy by the staff of the Office of Mineral Resources. Anything which may affect the acreage, the shape or the location of the tract, such as non-closure of or incorrect X, Y coordinates or title disputed acreage, or which may affect the status of the tract for leasing, such as overlap of prior leases or nominated tracts, or which may affect potential operations on leases taken, such as inclusion in areas under the jurisdiction of the Department of Wildlife and Fisheries, will not be specifically determined unless and until a bid on this tract is accepted by the Mineral Board; which bid will be accepted on a per acre basis and which acceptance will be conditional upon such specific determinations being made. Once a bid is conditionally accepted by the Mineral Board, the staff will, within a period following the date of the lease sale, determine the acreage, shape and location of the potential lease area of the tract, the status for leasing of all or any portion thereof, and any conditions which may affect potential operations thereon. These determinations may render all or a portion of the bid area unleaseable or may increase or decrease the State claimed acreage such that the total bonus/rental ultimately required may either exceed the bonus/rental paid at the lease sale, which will require additional payment by the successful bidder, or allow the successful bidder a refund of excessive payment. The successful bidder will be notified of the determinations by the staff and given an opportunity to view the bid area acreage, configuration and location as it has been specifically determined. If all or a portion of the bid area is unleaseable due to overlap of an existing lease, the successful bidder will be given an opportunity to accept or reject a new lease on that portion of the bid area which is not unleaseable. If rejected, the bid and all monies accompanying the bid will be returned to the successful bidder and no lease will be issued. In all other cases a new lease will be issued and any additional per acre bonus/rental, 10% administration fee or \$10 and \$5 per acre fees due as a result of staff determination of more State acreage in the bid area than determined by the successful bidder will be paid prior to the lease

being issued. A determination of less State acreage in the bid area will result in a return to the successful bidder of any overpayment.

NOTE: The Office of Mineral Resources will require a minimum bonus of \$225.00 per acre and a minimum royalty of 22%.

NOTE: The above tract is located in or near an oyster restricted area and all operations in such area must be conducted in strict conformity with the stipulations and/or regulations of the Louisiana Department of Wildlife and Fisheries.

NOTE: The State of Louisiana does hereby reserve, and this lease shall be subject to, the imprescriptible right of surface use in the nature of a servitude in favor of the Department of Natural Resources, including its Offices and Commissions, for the sole purpose of implementing, constructing, servicing and maintaining approved coastal zone management and/or restoration projects. Utilization of any and all rights derived under this lease by the mineral lessee, its agents, successors or assigns, shall not interfere with nor hinder the reasonable surface use by the Department of Natural Resources, its Offices or Commissions, as hereinabove reserved.

Applicant: Louisiana Oil and Gas, Inc.

Bidder	Cash Payment	Price / Acre	Rental	Oil	Gas	Other

1702

Union Production
\$1,872

83 (1)
✦
10607

Koch Expl. Co.
SI 5862
20109 (4)
*
8708

Texas
21 1900
25 (2)
✦
10230

Koch Expl. Co.
31 5862
20083 (1)
*
9273

Koch Expl. Co.
 51 5862
 20084 (2)
 9515  Texas

Birchright OLG Co.
SI 7194
20152 (2)
◆
2590

+
Koch Explorer
SI 5962
20200 (5)
*
8700

13270 Birthright Oil & Gas
St 7194
20141 (1)
9262

Koch Expl. Co.
SI 6289
20114 (1)
◆
2040

P.O.B.

$$\begin{aligned} X &= 2,539,491.95 \\ Y &= 506,200.65 \end{aligned}$$

Koch Expl. Co.
SA 7572
80159 (1)
◆
10737

Koch Expl. Co.
SI 3944
20101 (1)
✦
11262

TR 33552
2,500 +/- ACS.
JUNE, 2001

Carl DAG
SI 12039
2025 (1)
✦
11000

Texas
21 1901
87 (1)
✦
11466

LAKE BORGNE

Anderson Pritchard 0
SI 3029
3 (1)
✦
12975

St. Bernard Parish, LA

SCALE: 1" = 3000'

TRACT 33553 - St. Bernard Parish, Louisiana

All of the lands now or formerly constituting the beds and bottoms of all water bodies of every nature and description and all islands and other lands formed by accretion or reliction, except tax lands, owned by and not under mineral lease from the State of Louisiana on June 13, 2001, situated in St. Bernard Parish, Louisiana, within the following described boundaries: Beginning at a point having Coordinates of X = 2,539,491.95 and Y = 498,821.63; thence South 7,379.03 feet to a point having Coordinates of X = 2,539,491.95 and Y = 491,442.60; thence West 14,758.05 feet to a point having Coordinates of X = 2,524,733.90 and Y = 491,442.60; thence North 7,379.03 feet to a point having Coordinates of X = 2,524,733.90 and Y = 498,821.63; thence East 14,758.05 feet to the point of beginning, containing approximately 2,500.00 acres, as shown outlined in red on a plat on file in the Office of Mineral Resources, Department of Natural Resources, as provided by the applicant. All bearings, distances and coordinates are based on Louisiana Coordinate System of 1927 (South Zone).

NOTE: The boundary description and plat for this tract as shown and as advertised were supplied by the nominating party and have not been checked for accuracy by the staff of the Office of Mineral Resources. Anything which may affect the acreage, the shape or the location of the tract, such as non-closure of or incorrect X, Y coordinates or title disputed acreage, or which may affect the status of the tract for leasing, such as overlap of prior leases or nominated tracts, or which may affect potential operations on leases taken, such as inclusion in areas under the jurisdiction of the Department of Wildlife and Fisheries, will not be specifically determined unless and until a bid on this tract is accepted by the Mineral Board; which bid will be accepted on a per acre basis and which acceptance will be conditional upon such specific determinations being made. Once a bid is conditionally accepted by the Mineral Board, the staff will, within a period following the date of the lease sale, determine the acreage, shape and location of the potential lease area of the tract, the status for leasing of all or any portion thereof, and any conditions which may affect potential operations thereon. These determinations may render all or a portion of the bid area unleaseable or may increase or decrease the State claimed acreage such that the total bonus/rental ultimately required may either exceed the bonus/rental paid at the lease sale, which will require additional payment by the successful bidder, or allow the successful bidder a refund of excessive payment. The successful bidder will be notified of the determinations by the staff and given an opportunity to view the bid area acreage, configuration and location as it has been specifically determined. If all or a portion of the bid area is unleaseable due to overlap of an existing lease, the successful bidder will be given an opportunity to accept or reject a new lease on that portion of the bid area which is not unleaseable. If rejected, the bid and all monies accompanying the bid will be returned to the successful bidder and no lease will be issued. In all other cases a new lease will be issued and any additional per acre bonus/rental, 10% administration fee or \$10 and \$5 per acre fees due as a result of staff determination of more State acreage in the bid area than determined by the successful bidder will be paid prior to the lease

being issued. A determination of less State acreage in the bid area will result in a return to the successful bidder of any overpayment.

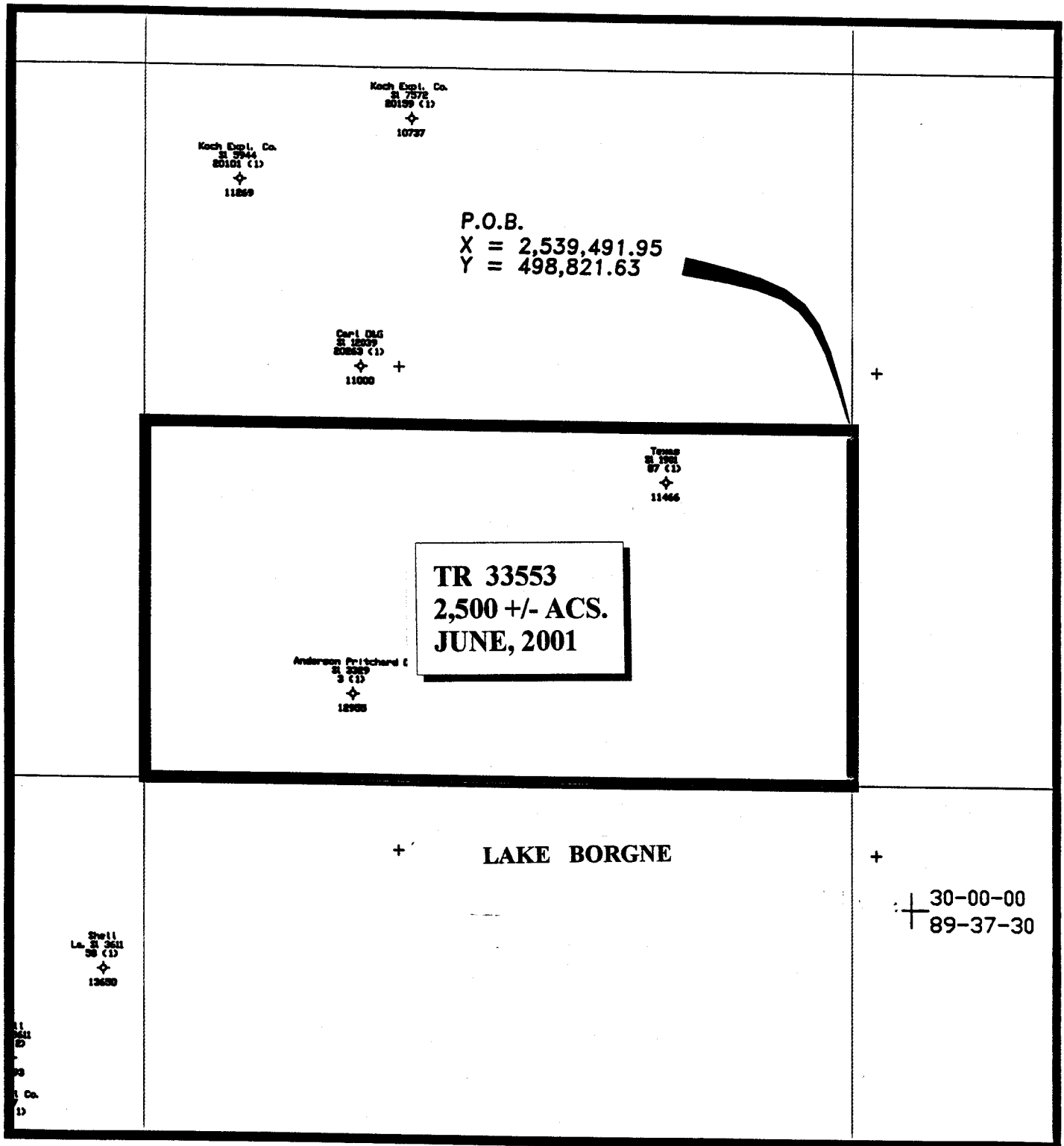
NOTE: The Office of Mineral Resources will require a minimum bonus of \$225.00 per acre and a minimum royalty of 22%.

NOTE: The above tract is located in or near an oyster restricted area and all operations in such area must be conducted in strict conformity with the stipulations and/or regulations of the Louisiana Department of Wildlife and Fisheries.

NOTE: The State of Louisiana does hereby reserve, and this lease shall be subject to, the imprescriptible right of surface use in the nature of a servitude in favor of the Department of Natural Resources, including its Offices and Commissions, for the sole purpose of implementing, constructing, servicing and maintaining approved coastal zone management and/or restoration projects. Utilization of any and all rights derived under this lease by the mineral lessee, its agents, successors or assigns, shall not interfere with nor hinder the reasonable surface use by the Department of Natural Resources, its Offices or Commissions, as hereinabove reserved.

Applicant: Louisiana Oil and Gas, Inc.

Bidder	Cash Payment	Price / Acre	Rental	Oil	Gas	Other



THE DATA USED TO PRODUCE
THIS MAP IS COPYRIGHTED BY
TOBIN INTERNATIONAL, LTD.,
AND ALL RIGHTS ARE RESERVED
BY TOBIN INTERNATIONAL, LTD.

St. Bernard Parish, LA

SCALE: 1" = 3000'

TRACT 33554 - PORTION OF BLOCK 23, NORTH LAKE BORGNE AREA, Orleans, St. Bernard and St. Tammany Parishes, Louisiana

All of the lands now or formerly constituting the beds and bottoms of all water bodies of every nature and description and all islands and other lands formed by accretion or reliction, except tax lands, belonging to the State of Louisiana and not under mineral lease on June 13, 2001, situated in Orleans, St. Bernard and St. Tammany Parishes, Louisiana, and more particularly described as follows: Beginning at the Southwest corner of Block 23, North Lake Borgne Area, having Coordinates of X = 2,536,250.00 and Y = 538,958.70; thence North 9,000.00 feet along the West boundary of said Block 23 to its Northwest corner having Coordinates of X = 2,536,250.00 and Y = 547,958.70; thence East 18,000.00 feet along the North boundary of said Block 23 to its Northeast corner having Coordinates of X = 2,554,250.00 and Y = 547,958.70; thence South 9,000.00 feet along the East boundary of said Block 23 to its Southeast corner having Coordinates of X = 2,554,250.00 and Y = 538,958.70; thence West 2,219.60 feet along the South boundary of said Block 23 to the Southeast corner of State Lease No. 6646, as amended, having Coordinates of X = 2,552,030.40 and Y = 538,958.70; thence along the boundaries of said State Lease No. 6646, as amended, the following courses: North 3,018.10 feet to a corner having Coordinates of X = 2,552,030.40 and Y = 541,976.80; West 4,600.00 feet to a corner having Coordinates of X = 2,547,430.40 and Y = 541,976.80; North 900.00 feet to a corner having Coordinates of X = 2,547,430.40 and Y = 542,876.80; West 4,600.00 feet to a corner having Coordinates of X = 2,542,830.40 and Y = 542,876.80; South 2,876.80 feet to a corner having Coordinates of X = 2,542,830.40 and Y = 540,000.00; West 6,100.40 feet to a corner having Coordinates of X = 2,536,730.00 and Y = 540,000.00; South 1,041.30 feet to the Southwest corner of said State Lease No. 6646, as amended, being on the South boundary of said Block 23 having Coordinates of X = 2,536,730.00 and Y = 538,958.70; thence West 480.00 feet along the said South boundary of said Block 23 to the point of beginning, containing approximately 1,746 acres, as shown outlined in red on a plat on file in the Office of Mineral Resources, Department of Natural Resources, as provided by the applicant. All bearings, distances and coordinates are based on Louisiana Coordinate System of 1927 (South Zone).

NOTE: The boundary description and plat for this tract as shown and as advertised were supplied by the nominating party and have not been checked for accuracy by the staff of the Office of Mineral Resources. Anything which may affect the acreage, the shape or the location of the tract, such as non-closure of or incorrect X, Y coordinates or title disputed acreage, or which may affect the status of the tract for leasing, such as overlap of prior leases or nominated tracts, or which may affect potential operations on leases taken, such as inclusion in areas under the jurisdiction of the Department of Wildlife and Fisheries, will not be specifically determined unless and until a bid on this tract is accepted by the Mineral Board; which bid will be accepted on a per acre basis and which acceptance will be conditional upon such specific determinations being made. Once a bid is conditionally accepted by the Mineral Board, the staff will, within a period following the date of the lease sale, determine the acreage, shape and location of the potential lease area of the tract, the status for leasing of all or any portion thereof, and any conditions which may affect potential operations thereon. These

determinations may render all or a portion of the bid area unleaseable or may increase or decrease the State claimed acreage such that the total bonus/rental ultimately required may either exceed the bonus/rental paid at the lease sale, which will require additional payment by the successful bidder, or allow the successful bidder a refund of excessive payment. The successful bidder will be notified of the determinations by the staff and given an opportunity to view the bid area acreage, configuration and location as it has been specifically determined. If all or a portion of the bid area is unleaseable due to overlap of an existing lease, the successful bidder will be given an opportunity to accept or reject a new lease on that portion of the bid area which is not unleaseable. If rejected, the bid and all monies accompanying the bid will be returned to the successful bidder and no lease will be issued. In all other cases a new lease will be issued and any additional per acre bonus/rental, 10% administration fee or \$10 and \$5 per acre fees due as a result of staff determination of more State acreage in the bid area than determined by the successful bidder will be paid prior to the lease being issued. A determination of less State acreage in the bid area will result in a return to the successful bidder of any overpayment.

NOTE: The Office of Mineral Resources will require a minimum bonus of \$250.00 per acre and a minimum royalty of 22%.

NOTE: The above tract is located in or near an oyster restricted area and all operations in such area must be conducted in strict conformity with the stipulations and/or regulations of the Louisiana Department of Wildlife and Fisheries.

NOTE: The State of Louisiana does hereby reserve, and this lease shall be subject to, the imprescriptible right of surface use in the nature of a servitude in favor of the Department of Natural Resources, including its Offices and Commissions, for the sole purpose of implementing, constructing, servicing and maintaining approved coastal zone management and/or restoration projects. Utilization of any and all rights derived under this lease by the mineral lessee, its agents, successors or assigns, shall not interfere with nor hinder the reasonable surface use by the Department of Natural Resources, its Offices or Commissions, as hereinabove reserved.

Applicant: Louisiana Oil and Gas, Inc.

Bidder	Cash Payment	Price / Acre	Rental	Oil	Gas	Other

TR 33554
1,746 +/- ACS.
JUNE, 2001

P.O.B.

X = 2,536,250.00'
Y = 538,958.70'

NORTH LAKE BORGNE AREA

ORLEANS AND/OR ST. BERNARD AND/OR ST. TAMMANY PARISHES, LOUISIANA

Scale- 1"=2000'

TRACT 33555 - PORTION OF BLOCK 22, NORTH LAKE BORGNE AREA, Orleans, St. Bernard and St. Tammany Parishes, Louisiana

All of the lands now or formerly constituting the beds and bottoms of all water bodies of every nature and description and all islands and other lands formed by accretion or reliction, except tax lands, belonging to the State of Louisiana and not under mineral lease on June 13, 2001, situated in Orleans, St. Bernard and St. Tammany Parishes, Louisiana, and more particularly described as follows: Beginning at the Northeast corner of Block 22, North Lake Borgne Area, having Coordinates of X = 2,554,250.00 and Y = 538,958.70; thence South 4,500.00 feet to the Northeast corner of State Lease No. 6647 having Coordinates of X = 2,554,250.00 and Y = 534,458.70; thence West 2,219.60 feet along the North boundary of said State Lease No. 6647 to its Northwest corner having Coordinates of X = 2,552,030.40 and Y = 534,458.70; thence South 4,500.00 feet along the West boundary of said State Lease No. 6647 to its Southwest corner having Coordinates of X = 2,552,030.40 and Y = 529,958.70; thence West 15,780.40 feet along the South boundary of Block 22, North Lake Borgne Area, to a point having Coordinates of X = 2,536,250.00 and Y = 529,958.70; thence North 9,000.00 feet along the West boundary of Block 22, North Lake Borgne Area, to a point having Coordinates of X = 2,536,250.00 and Y = 538,958.70; thence East 480.00 feet along the North boundary of Block 22, North Lake Borgne Area, to a point being the Northwest boundary of State Lease No. 6647 having Coordinates of X = 2,536,730.00 and Y = 538,958.70; thence along the State Lease No. 6647 the following courses: South 4,099.80 feet, East 6,100.40 feet, North 1,199.80 feet, East 4,600.00 feet, South 900.00 feet, East 4,600.00 feet and North 3,800.00 feet to a point having Coordinates of X = 2,552,030.40 and Y = 538,958.70; thence East 2,219.60 feet to the point of beginning, containing approximately **2,208.02 acres**, as shown outlined in red on a plat on file in the Office of Mineral Resources, Department of Natural Resources, as provided by the applicant. All bearings, distances and coordinates are based on Louisiana Coordinate System of 1927 (South Zone).

NOTE: The boundary description and plat for this tract as shown and as advertised were supplied by the nominating party and have not been checked for accuracy by the staff of the Office of Mineral Resources. Anything which may affect the acreage, the shape or the location of the tract, such as non-closure of or incorrect X, Y coordinates or title disputed acreage, or which may affect the status of the tract for leasing, such as overlap of prior leases or nominated tracts, or which may affect potential operations on leases taken, such as inclusion in areas under the jurisdiction of the Department of Wildlife and Fisheries, will not be specifically determined unless and until a bid on this tract is accepted by the Mineral Board; which bid will be accepted on a per acre basis and which acceptance will be conditional upon such specific determinations being made. Once a bid is conditionally accepted by the Mineral Board, the staff will, within a period following the date of the lease sale, determine the acreage, shape and location of the potential lease area of the tract, the status for leasing of all or any portion thereof, and any conditions which may affect potential operations thereon. These determinations may render all or a portion of the bid area unleaseable or may increase or decrease the State claimed acreage such that the total bonus/rental ultimately required may either exceed the

bonus/rental paid at the lease sale, which will require additional payment by the successful bidder, or allow the successful bidder a refund of excessive payment. The successful bidder will be notified of the determinations by the staff and given an opportunity to view the bid area acreage, configuration and location as it has been specifically determined. If all or a portion of the bid area is unleaseable due to overlap of an existing lease, the successful bidder will be given an opportunity to accept or reject a new lease on that portion of the bid area which is not unleaseable. If rejected, the bid and all monies accompanying the bid will be returned to the successful bidder and no lease will be issued. In all other cases a new lease will be issued and any additional per acre bonus/rental, 10% administration fee or \$10 and \$5 per acre fees due as a result of staff determination of more State acreage in the bid area than determined by the successful bidder will be paid prior to the lease being issued. A determination of less State acreage in the bid area will result in a return to the successful bidder of any overpayment.

NOTE: The Office of Mineral Resources will require a minimum bonus of \$250.00 per acre and a minimum royalty of 22%.

NOTE: The above tract is located in or near an oyster restricted area and all operations in such area must be conducted in strict conformity with the stipulations and/or regulations of the Louisiana Department of Wildlife and Fisheries.

NOTE: The State of Louisiana does hereby reserve, and this lease shall be subject to, the imprescriptible right of surface use in the nature of a servitude in favor of the Department of Natural Resources, including its Offices and Commissions, for the sole purpose of implementing, constructing, servicing and maintaining approved coastal zone management and/or restoration projects. Utilization of any and all rights derived under this lease by the mineral lessee, its agents, successors or assigns, shall not interfere with nor hinder the reasonable surface use by the Department of Natural Resources, its Offices or Commissions, as hereinabove reserved.

Applicant: Louisiana Oil and Gas, Inc.

Bidder	Cash Payment	Price / Acre	Rental	Oil	Gas	Other