

TRACT 32528 - PORTION OF BLOCK 44, BRETON SOUND AREA, Plaquemines Parish, Louisiana

That portion of Block 44, Breton Sound Area, Plaquemines Parish, Louisiana, belonging to the State of Louisiana and not under mineral lease on June 14, 2000, described as follows: Beginning at the Northwest corner of Block 44, Breton Sound Area, having Coordinates of X = 2,694,350.00 and Y = 307,580.00; thence East 7,375.00 feet on the North line of said Block 44 to a point having Coordinates of X = 2,701,725.00 and Y = 307,580.00; thence South 14,750.00 feet to a point on the South line of said Block 44, having Coordinates of X = 2,701,725.00 and Y = 292,830.00; thence West 7,375.00 feet on the South line of said Block 44 to its Southwest corner, having Coordinates of X = 2,694,350.00 and Y = 292,830.00; thence North 14,750.00 feet on the West line of said Block 44 to the point of beginning, containing approximately 2,497.27 acres, as shown outlined in red on a plat on file in the Office of Mineral Resources, Department of Natural Resources. All bearings, distances and coordinates are based on Louisiana Coordinate System of 1927 (South Zone).

NOTE: It appears according to our records that a portion of this tract is located within the restrictive safety fairway area as set out by the Corps of Engineers, U.S. Army.

NOTE: The State of Louisiana does hereby reserve, and this lease shall be subject to, the imprescriptible right of surface use in the nature of a servitude in favor of the Department of Natural Resources, including its Offices and Commissions, for the sole purpose of implementing, constructing, servicing and maintaining approved coastal zone management and/or restoration projects. Utilization of any and all rights derived under this lease by the mineral lessee, its agents, successors or assigns, shall not interfere with nor hinder the reasonable surface use by the Department of Natural Resources, its Offices or Commissions, as hereinabove reserved.

Applicant: Cypress Energy Corporation

Bidder	Cash Payment	Price / Acre	Rental	Oil	Gas	Other

BLK. 36

BLK. 37

P.O.B.
X= 2,694,350.00
Y= 307,580.00



BLK. 45

BLK. 44

S. L. 2001

S. L. 13990

S. L. 14369

TR. 32528
2,497.27 +/- ACS.
JUN., 2000

OFFICIAL COPY
OFFICE OF MINERAL RESOURCES
DEPT. OF NATURAL RESOURCES
DO NOT REMOVE

BRETON SOUND AREA
PLAQUEMINES PARISH

BLK. 52

BLK. 53

3000 0 3000 Feet

TRACT 32529 - PORTION OF BLOCK 52, BRETON SOUND AREA, Plaquemines Parish, Louisiana

That portion of Block 52, Breton Sound Area, Plaquemines Parish, Louisiana, belonging to the State of Louisiana and not under mineral lease on June 14, 2000, described as follows: Beginning at a point on the South line of Block 52, Breton Sound Area, having Coordinates of X = 2,686,975.00 and Y = 278,080.00; thence West 7,375.00 feet on the said South line of said Block 52 to its Southwest corner having Coordinates of X = 2,679,600.00 and Y = 278,080.00; thence North 14,750.00 feet on the West line of said Block 52 to its Northwest corner having Coordinates of X = 2,679,600.00 and Y = 292,830.00; thence East 7,750.00 feet on the North line of said Block 52 to the Northwest corner of State Lease No. 12806, as amended, having Coordinates of X = 2,687,350.00 and Y = 292,830.00; thence along the boundary of said State Lease No. 12806 the following courses: South 50 degrees 32 minutes 23 seconds West 5,310.43 feet, South 1,200.00 feet, South 79 degrees 02 minutes 24 seconds East 2,050.87 feet and along an arc to the left having a radius of 6,073.33 feet to a point having Coordinates of X = 2,686,975.00 and Y = 287,814.95; thence South 9,734.95 feet to the point of beginning, containing approximately 2,237.97 acres, as shown outlined in red on a plat on file in the Office of Mineral Resources, Department of Natural Resources. All bearings, distances and coordinates are based on Louisiana Coordinate System of 1927 (South Zone).

NOTE: The State of Louisiana does hereby reserve, and this lease shall be subject to, the imprescriptible right of surface use in the nature of a servitude in favor of the Department of Natural Resources, including its Offices and Commissions, for the sole purpose of implementing, constructing, servicing and maintaining approved coastal zone management and/or restoration projects. Utilization of any and all rights derived under this lease by the mineral lessee, its agents, successors or assigns, shall not interfere with nor hinder the reasonable surface use by the Department of Natural Resources, its Offices or Commissions, as hereinabove reserved.

Applicant: Cypress Energy Corporation

Bidder	Cash Payment	Price / Acre	Rental	Oil	Gas	Other



BLK. 46

BLK. 45

BLK. 51

BLK. 52

S.L. 12806

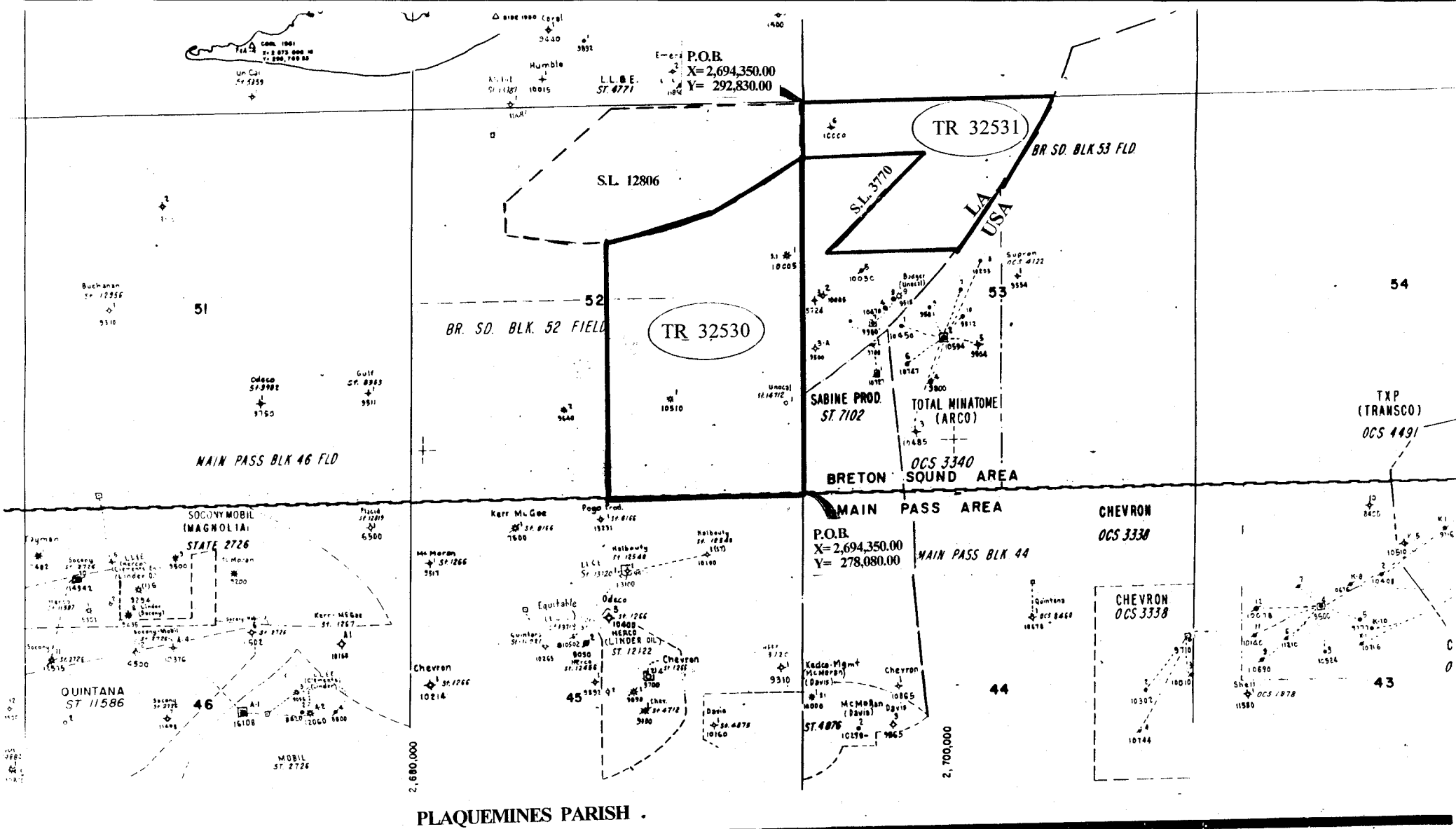
TR. 32529
2,237.97 +/- ACS.
JUNE, 2000

P.O.B.
X= 2,686,975.00
Y= 278,080.00

BRETON SOUND AREA
PLAQUEMINES PARISH

OFFICIAL COPY
OFFICE OF MINERAL RESOURCES
DEPT. OF NATURAL RESOURCES
DO NOT REMOVE

3000 0 3000 Feet



F & A Map Services
Division of PI

MAP NOT TO SCALE

NOT TO BE USED WITH A PORTION BID
FOR INFORMATIONAL PURPOSES ONLY

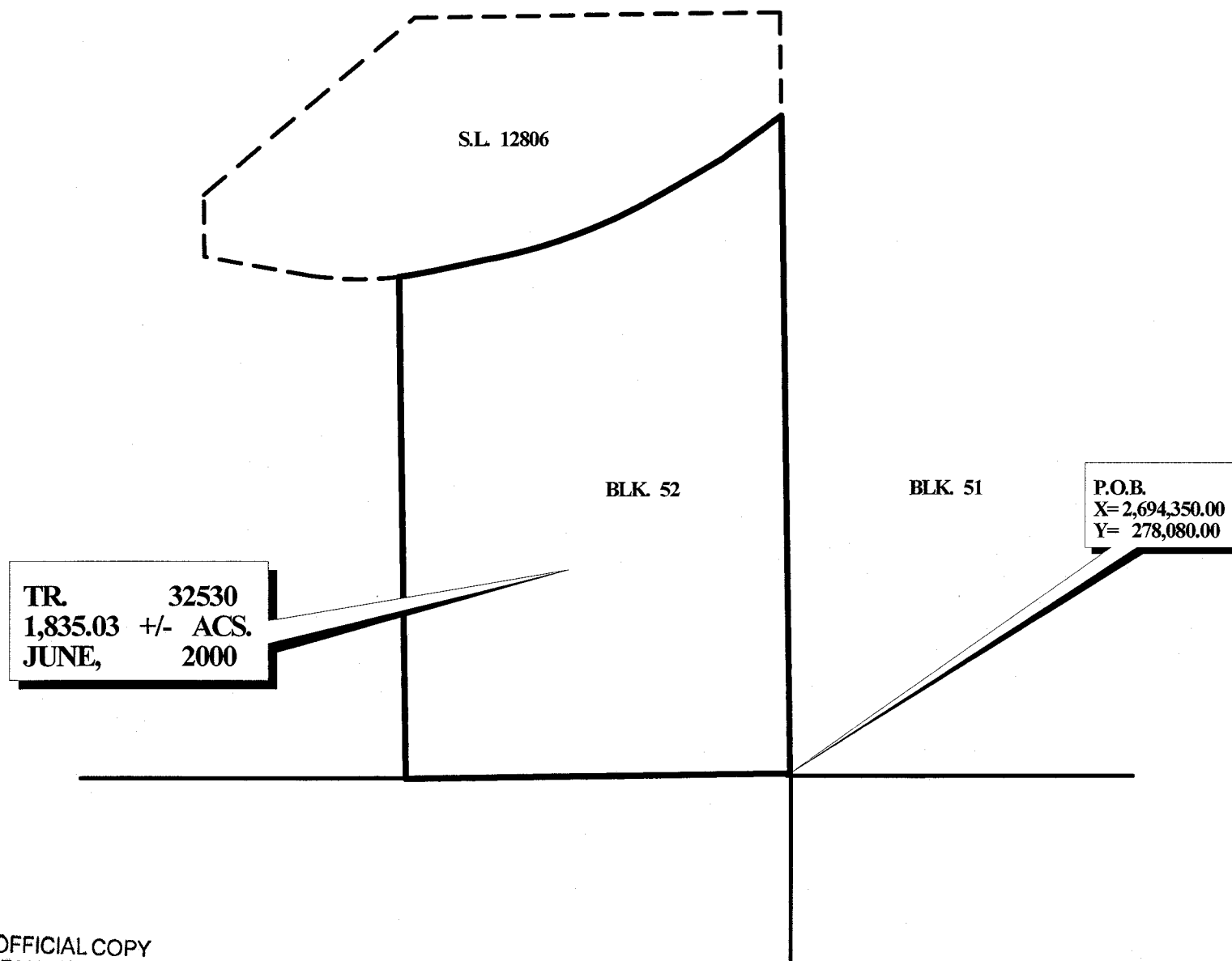
TRACT 32530 - PORTION OF BLOCK 52, BRETON SOUND AREA, Plaquemines Parish, Louisiana

That portion of Block 52, Breton Sound Area, Plaquemines Parish, Louisiana, belonging to the State of Louisiana and not under mineral lease on June 14, 2000, described as follows: Beginning at the Southeast corner of Block 52, Breton Sound Area, having Coordinates of X = 2,694,350.00 and Y = 278,080.00; thence West 7,375.00 feet on the South line of said Block 52 having Coordinates of X = 2,686,975.00 and Y = 278,080.00; thence North 9,734.95 feet to a point on the South line of State Lease No. 12806, as amended, having Coordinates of X = 2,686,975.00 and Y = 287,814.95; thence along the boundary of said State Lease No. 12806 the following courses: Easterly 586.12 feet along an arc to the left with a radius of 6,073.33 feet to a point having Coordinates of X = 2,687,553.37 and Y = 287,908.53, North 78 degrees 46 minutes 57 seconds East 1,028.18 feet, Easterly 3,655.30 feet along an arc to the left with a radius of 10,021.87 feet to a point having Coordinates of X = 2,691,988.99 and Y = 289,320.63, North 60 degrees 17 minutes 03 seconds East 1,392.64 feet and North 54 degrees 34 minutes 36 seconds East 1,413.08 feet to a point on the East line of said Block 52 having Coordinates of X = 2,694,350.00 and Y = 290,830.00; thence South 12,750.00 feet to the point of beginning, containing approximately 1,835.03 acres, as shown outlined in red on a plat on file in the Office of Mineral Resources, Department of Natural Resources. All bearings, distances and coordinates are based on Louisiana Coordinate System of 1927 (South Zone).

NOTE: The State of Louisiana does hereby reserve, and this lease shall be subject to, the imprescriptible right of surface use in the nature of a servitude in favor of the Department of Natural Resources, including its Offices and Commissions, for the sole purpose of implementing, constructing, servicing and maintaining approved coastal zone management and/or restoration projects. Utilization of any and all rights derived under this lease by the mineral lessee, its agents, successors or assigns, shall not interfere with nor hinder the reasonable surface use by the Department of Natural Resources, its Offices or Commissions, as hereinabove reserved.

Applicant: Cypress Energy Corporation

Bidder	Cash Payment	Price / Acre	Rental	Oil	Gas	Other



OFFICIAL COPY
OFFICE OF MINERAL RESOURCES
DEPT. OF NATURAL RESOURCES
DO NOT REMOVE

BRETON SOUND AREA
PLAQUEMINES PARISH

3000 0 3000 6000 Feet

TRACT 32531 - PORTION OF BLOCK 53, BRETON SOUND AREA, Plaquemines Parish, Louisiana

That portion of Block 53, Breton Sound Area, Plaquemines Parish, Louisiana, belonging to the State of Louisiana and not under mineral lease on June 14, 2000, described as follows: Beginning at the Northwest corner of Block 53, Breton Sound Area, having Coordinates of X = 2,694,350.00 and Y = 292,830.00; thence East 9,413.13 feet on the North line of said Block 53 to a point having Coordinates of X = 2,703,763.13 and Y = 292,830.00; thence Southwesterly on an arc having a radius of 18,240.60 feet and a center at X = 2,687,014 and Y = 300,054 to a point having Coordinates of X = 2,701,338 and Y = 288,761; thence Southwesterly on a straight line to the most Easterly corner of State Lease No. 3770, as amended, having Coordinates of X = 2,700,150.00 and Y = 287,254.14; thence on the boundaries of said State Lease No. 3770 as follows: West 5,000.00 feet, North 46 degrees 44 minutes 26 seconds East 5,217.93 feet and West 4,600.00 feet to its Northwest corner on the West line of said Block 53 having Coordinates of X = 2,694,350.00 and Y = 290,830.00; thence North 2,000.00 feet on the West line of said Block 53 to the point of beginning, containing approximately 776.77 acres, as shown outlined in red on a plat on file in the Office of Mineral Resources, Department of Natural Resources, **LESS AND EXCEPT** that portion thereof, if any, which is more than three nautical miles from the coast line as determined by the Report of the Special Master in the litigation in the Supreme Court of the United States styled United States v. State of Louisiana et al No. 9 Original, said three mile line as set out in the June, 1975, decree of the Supreme Court. All bearings, distances and coordinates are based on Louisiana Coordinate System of 1927 (South Zone).

NOTE: The State of Louisiana does hereby reserve, and this lease shall be subject to, the imprescriptible right of surface use in the nature of a servitude in favor of the Department of Natural Resources, including its Offices and Commissions, for the sole purpose of implementing, constructing, servicing and maintaining approved coastal zone management and/or restoration projects. Utilization of any and all rights derived under this lease by the mineral lessee, its agents, successors or assigns, shall not interfere with nor hinder the reasonable surface use by the Department of Natural Resources, its Offices or Commissions, as hereinabove reserved.

Applicant: Cypress Energy Corporation

Bidder	Cash Payment	Price / Acre	Rental	Oil	Gas	Other



P.O.B.
X= 2,694,350.00
Y= 292,830.00

BLK. 53

S. L. 3770

LA
USA

TR. 32531
776.77 +/- ACS.
JUNE, 2000

OFFICIAL COPY
OFFICE OF MINERAL RESOURCES
DEPT. OF NATURAL RESOURCES
DO NOT REMOVE

BRETON SOUND AREA
PLAQUEMINES PARISH

2000 0 2000 4000 Feet

TRACT 32532 - PORTION OF BLOCK 44, BRETON SOUND AREA, Plaquemines Parish, Louisiana

That portion of Block 44, Breton Sound Area, Plaquemines Parish, Louisiana, belonging to the State of Louisiana and not under mineral lease on June 14, 2000, described as follows: Beginning at the Northeast corner of Block 44, Breton Sound Area, having Coordinates of X = 2,709,100.00 and Y = 307,580.00; thence South 11,309.92 feet on the East line of said Block 44 to a point having Coordinates of X = 2,709,100.00 and Y = 296,270.08; thence the following courses: Southwesterly on a straight line to a point having Coordinates of X = 2,704,480 and Y = 294,684, Southwesterly on a straight line to a point having Coordinates of X = 2,704,099 and Y = 293,666 and Southwesterly on an arc having a radius of 18,240.60 feet and a center at X = 2,687,014 and Y = 300,054 to a point on the South line of said Block 44, having Coordinates of X = 2,703,763.13 and Y = 292,830.00; thence West 2,038.13 feet on the South line of Block 44 to a point having Coordinates of X = 2,701,725.00 and Y = 292,830.00; thence North 14,750.00 feet to a point on the North line of said Block 44, having Coordinates of X = 2,701,725.00 and Y = 307,580.00; thence East 7,375.00 feet on the North line of said Block 44 to the point of beginning, containing approximately 2,201.62 acres, as shown outlined in red on a plat on file in the Office of Mineral Resources, Department of Natural Resources, **LESS AND EXCEPT** that portion thereof, if any, which is more than three nautical miles from the coast line as determined by the Report of the Special Master in litigation in the Supreme Court of the United States styled United States v. State of Louisiana et al No. 9 Original, said three mile line as set out in the June, 1975, decree of the Supreme Court. All bearings, distances and coordinates are based on Louisiana Coordinate System of 1927 (South Zone).

NOTE: It appears according to our records that a portion of this tract is located within the restrictive safety fairway area as set out by the Corps of Engineers, U.S. Army.

NOTE: The State of Louisiana does hereby reserve, and this lease shall be subject to, the imprescriptible right of surface use in the nature of a servitude in favor of the Department of Natural Resources, including its Offices and Commissions, for the sole purpose of implementing, constructing, servicing and maintaining approved coastal zone management and/or restoration projects. Utilization of any and all rights derived under this lease by the mineral lessee, its agents, successors or assigns, shall not interfere with nor hinder the reasonable surface use by the Department of Natural Resources, its Offices or Commissions, as hereinabove reserved.

Applicant: Cypress Energy Corporation

Bidder	Cash Payment	Price / Acre	Rental	Oil	Gas	Other



P.O.B.
X= 2,709,100.00
Y= 307,580.00

TR 32532
2,201.62 +/- ACS.
JUN., 2000

BLK 44

LA
USA

BRETON SOUND AREA
PLAQUEMINES PARISH

3000 0 3000 Feet

OFFICIAL COPY
OFFICE OF MINERAL RESOURCES
DEPT. OF NATURAL RESOURCES
DO NOT REMOVE