

OFFSHORE TRACTS

TRACT 32524 - PORTION OF BLOCK 36, BRETON SOUND AREA, Plaquemines Parish, Louisiana

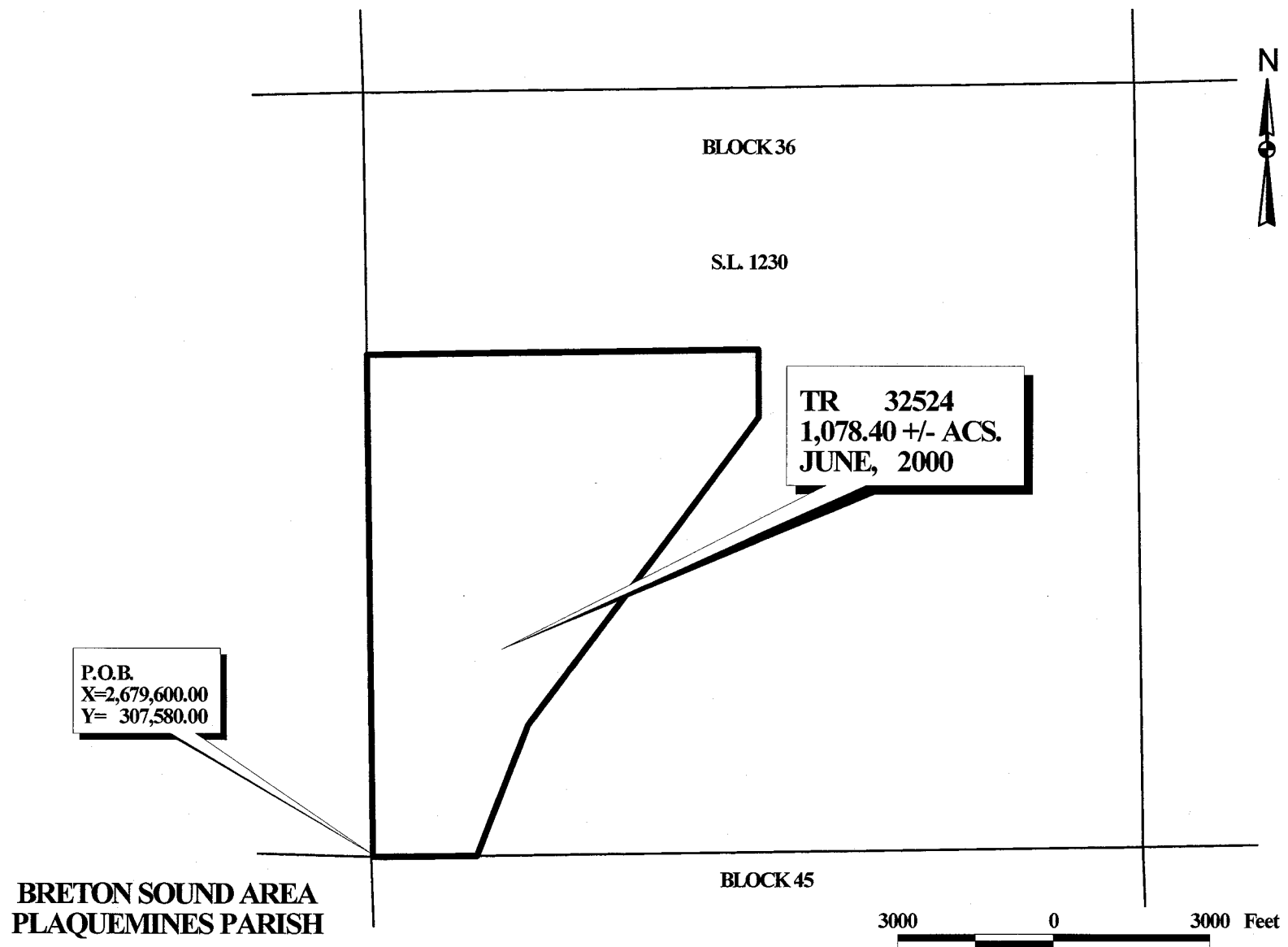
That portion of Block 36, Breton Sound Area, Plaquemines Parish, Louisiana, belonging to the State of Louisiana and not under mineral lease on June 14, 2000, described as follows: Beginning at the Southwest corner of Block 36, Breton Sound Area, having Coordinates of X = 2,679,600.00 and Y = 307,580.00; thence North 9,700.00 feet along the West line of said Block 36 to the most Northern Southwest corner of State Lease No. 1230, as amended, having Coordinates of X = 2,679,600.00 and Y = 317,800.00; thence East 7,500.00 feet along the South boundary of said State Lease No. 1230 to a corner having Coordinates of X = 2,687,100.00 and Y = 317,280.00; thence South 1,300.00 feet along the West boundary of said State Lease No. 1230 to a corner having Coordinates of X = 2,687,100.00 and Y = 315,980.00; thence South 37 degrees 20 minutes 00 seconds West 7,420.24 feet along the West boundary of said State Lease No. 1230 to a corner having Coordinates of X = 2,682,600.00 and Y = 310,080.00; thence South 21 degrees 48 minutes 05 seconds west 2,692.58 feet along the West boundary of said State Lease No. 1230 to its most Southern Southwest corner located on the South line of said Block 36 having Coordinates of X = 2,681,600.00 and Y = 307,580.00; thence West 2,000.00 feet along the South line of said Block 36 to the point of beginning, **LESS AND EXCEPT** any portion of State Lease No. 1230, as amended, that may lie within the above described tract, containing approximately 1,078.40 acres, as shown outlined in red on a plat on file in the Office of Mineral Resources, Department of Natural Resources. All bearings, distances and coordinates are based on Louisiana Coordinate System of 1927 (South Zone).

NOTE: It appears, according to our records, that a portion of this tract is located within the restrictive safety fairway area as set out by the Corps of Engineers, U.S. Army.

NOTE: The State of Louisiana does hereby reserve, and this lease shall be subject to, the imprescriptible right of surface use in the nature of a servitude in favor of the Department of Natural Resources, including its Offices and Commissions, for the sole purpose of implementing, constructing, servicing and maintaining approved coastal zone management and/or restoration projects. Utilization of any and all rights derived under this lease by the mineral lessee, its agents, successors or assigns, shall not interfere with nor hinder the reasonable surface use by the Department of Natural Resources, its Offices or Commissions, as hereinabove reserved.

Applicant: Cypress Energy Corporation

Bidder	Cash Payment	Price / Acre	Rental	Oil	Gas	Other



OFFICIAL COPY
OFFICE OF MINERAL RESOURCES
DEPT. OF NATURAL RESOURCES
DO NOT REMOVE

TRACT 32525 - PORTION OF BLOCK 37, BRETON SOUND AREA, Plaquemines Parish, Louisiana

That portion of Block 37, Breton Sound Area, Plaquemines Parish, Louisiana, belonging to the State of Louisiana and not under mineral lease on June 14, 2000, described as follows: Beginning at the Southwest corner of Block 37, Breton Sound Area, having Coordinates of X = 2,694,350.00 and Y = 307,580.00; thence North 4,500.00 feet on the West line of said Block 37 to the Southwest corner of State Lease No. 4409, as amended, having Coordinates of X = 2,694,350.00 and Y = 312,080.00; thence on the boundary of said State Lease No. 4409 the following courses: East 5,450.00 feet and North 73 degrees 47 minutes 09 seconds East 4,978.00 feet to its Southeast corner having Coordinates of X = 2,704,580.00 and Y = 313,470.00; thence North 74 degrees 25 minutes 25 seconds East 4,692.33 feet to a point on the East line of said Block 37 having Coordinates of X = 2,709,100.00 and Y = 314,730.00; thence South 7,150.00 feet on the East line of said Block 37 to its Southeast corner having Coordinates of X = 2,709,100.00 and Y = 307,580.00; thence West 14,750.00 feet on the South line of said Block 37 to the point of beginning, containing approximately 1,809.63 acres, as shown outlined in red on a plat on file in the Office of Mineral Resources, Department of Natural Resources. All bearings, distances and coordinates are based on Louisiana Coordinate System of 1927 (South Zone).

NOTE: It appears according to our records that a portion of this tract is located within the restrictive safety fairway area as set out by the Corps of Engineers, U.S. Army.

NOTE: The State of Louisiana does hereby reserve, and this lease shall be subject to, the imprescriptible right of surface use in the nature of a servitude in favor of the Department of Natural Resources, including its Offices and Commissions, for the sole purpose of implementing, constructing, servicing and maintaining approved coastal zone management and/or restoration projects. Utilization of any and all rights derived under this lease by the mineral lessee, its agents, successors or assigns, shall not interfere with nor hinder the reasonable surface use by the Department of Natural Resources, its Offices or Commissions, as hereinabove reserved.

Applicant: Cypress Energy Corporation

Bidder	Cash Payment	Price / Acre	Rental	Oil	Gas	Other



TR. 32525
1,809.63 +/- ACS.
JUN., 2000

S. L. 4409

BLK. 37

BLK. 36

BLK. 38

BLK. 45

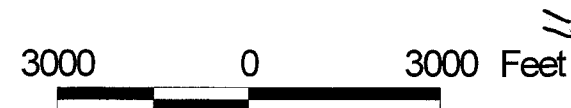
BLK. 44

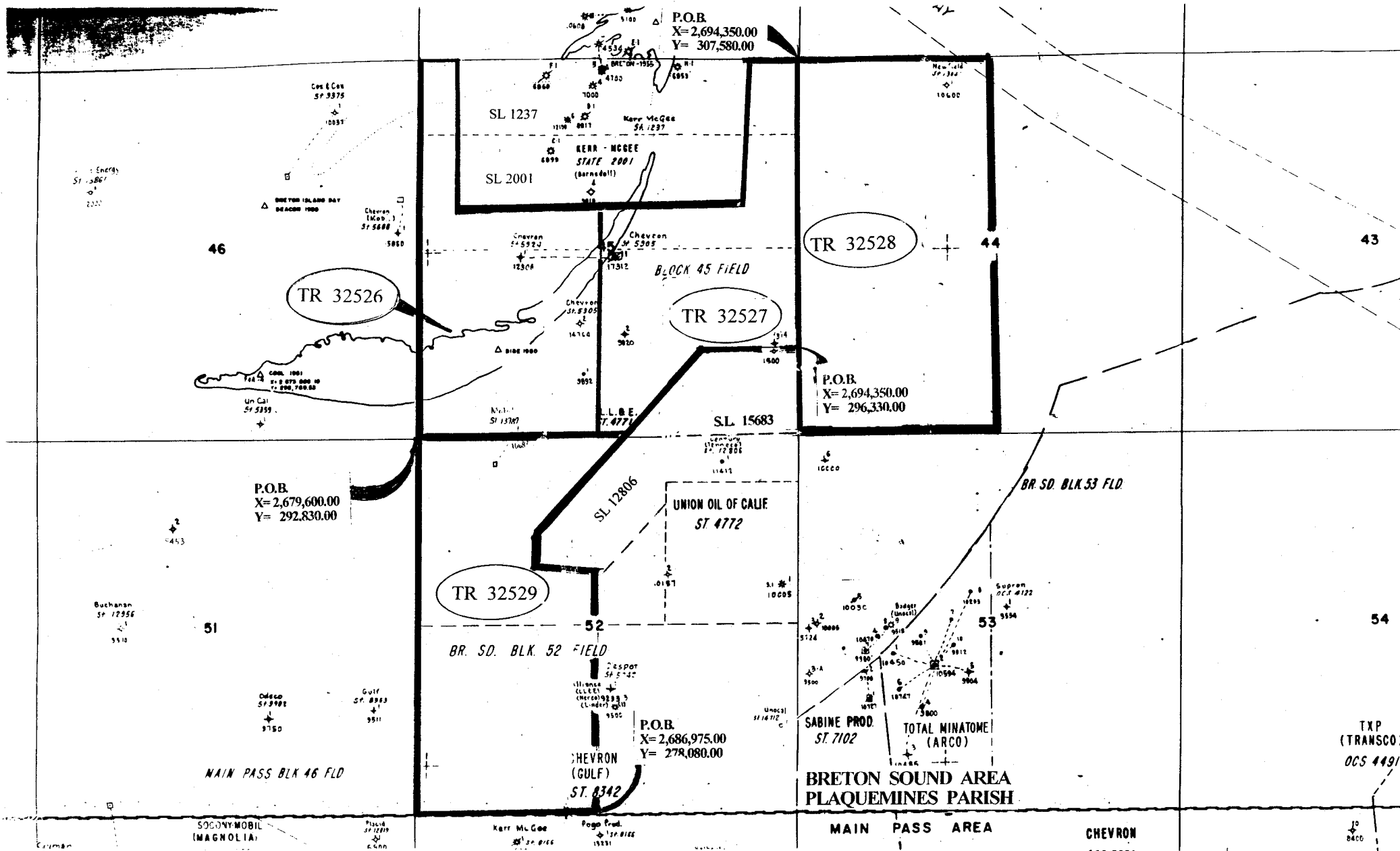
BLK. 43

P.O.B.
X= 2,694,350.00
Y= 307,580.00

BRETON SOUND AREA
PLAQUEMINES PARISH

OFFICIAL COPY
OFFICE OF MINERAL RESOURCES
DEPT. OF NATURAL RESOURCES
DO NOT REMOVE





F & A Map Services
Division of PI

MAP NOT TO SCALE

NOT TO BE USED WITH A PORTION BID
FOR INFORMATIONAL PURPOSES ONLY!

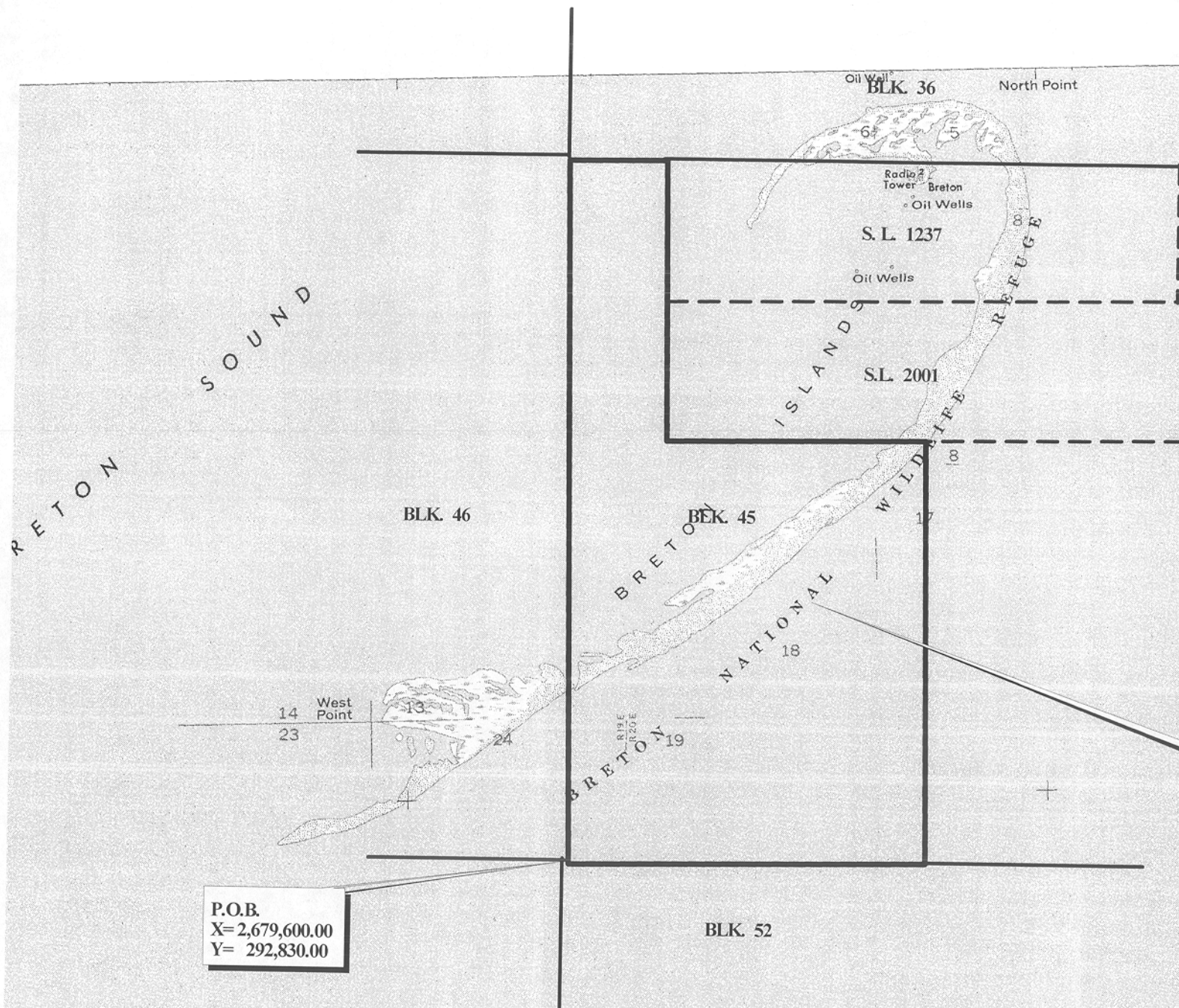
TRACT 32526 - PORTION OF BLOCK 45, BRETON SOUND AREA, Plaquemines Parish, Louisiana

That portion of Block 45, Breton Sound Area, Plaquemines Parish, Louisiana, belonging to the State of Louisiana and not under mineral lease on June 14, 2000, described as follows: Beginning at the Southwest corner of Block 45, Breton Sound Area, having Coordinates of X = 2,679,600.00 and Y = 292,830.00; thence North 14,750.00 feet on the West line of said Block 45 to its Northwest corner having Coordinates of X = 2,679,600.00 and Y = 307,580.00; thence East 2,000.00 feet on the North line of said Block 45 to the Northwest corner of State Lease No. 1237, as amended, having Coordinates of X = 2,681,600.00 and Y = 307,580.00; thence South 2,950.00 feet on the West line of said State Lease No. 1237 to its Southwest corner, also being the Northwest corner of State Lease No. 2001, as amended, having Coordinates of X = 2,681,600.00 and Y = 304,630.00; thence South 2,925.00 feet on the West line of said State Lease No. 2001 to its Southwest corner having Coordinates of X = 2,681,600.00 and Y = 301,705.00; thence East 5,375.00 feet on the South line of said State Lease No. 2001 to a point having Coordinates of X = 2,686,975.00 and Y = 301,705.00; thence South 8,875.00 feet to a point on the South line of said Block 45 having Coordinates of X = 2,686,975.00 and Y = 292,830.00; thence West 7,375.00 feet on the South line of said Block 45 to the point of beginning, containing approximately 1,650 acres, as shown outlined in red on a plat on file in the Office of Mineral Resources, Department of Natural Resources. All bearings, distances and coordinates are based on Louisiana Coordinate System of 1927 (South Zone).

NOTE: The State of Louisiana does hereby reserve, and this lease shall be subject to, the imprescriptible right of surface use in the nature of a servitude in favor of the Department of Natural Resources, including its Offices and Commissions, for the sole purpose of implementing, constructing, servicing and maintaining approved coastal zone management and/or restoration projects. Utilization of any and all rights derived under this lease by the mineral lessee, its agents, successors or assigns, shall not interfere with nor hinder the reasonable surface use by the Department of Natural Resources, its Offices or Commissions, as hereinabove reserved.

Applicant: Cypress Energy Corporation

Bidder	Cash Payment	Price / Acre	Rental	Oil	Gas	Other



P.O.B.
X= 2,679,600.00
Y= 292,830.00

TR. 32526
1,650 +/- ACS.
JUNE, 2000

BRETON SOUND AREA
PLAQUEMINES PARISH

OFFICIAL COPY
OFFICE OF MINERAL RESOURCES
DEPT. OF NATURAL RESOURCES
DO NOT REMOVE

3000 0 3000 Feet

EXICO 14

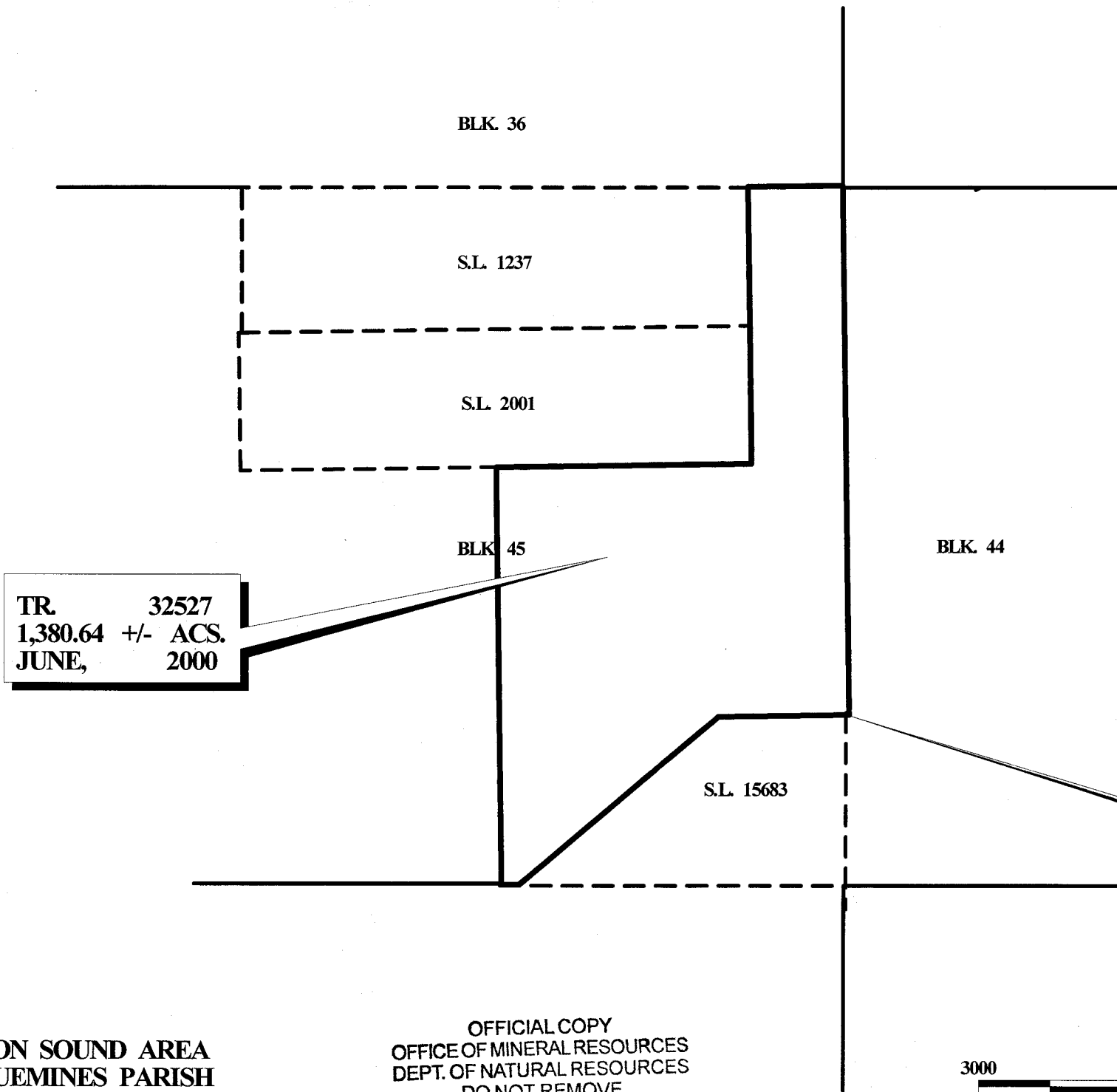
TRACT 32527 - PORTION OF BLOCK 45, BRETON SOUND AREA, Plaquemines Parish, Louisiana

That portion of Block 45, Breton Sound Area, Plaquemines Parish, Louisiana, belonging to the State of Louisiana and not under mineral lease on June 14, 2000, described as follows: Beginning at a point on the East line of Block 45, Breton Sound Area, having Coordinates of X = 2,694,350.00 and Y = 296,330.00, also being the Northeast corner of State Lease No. 15683; thence West 2,750.00 feet on the North line of said State Lease No. 15683 to its Northwest corner having Coordinates of X = 2,691,600.00 and Y = 296,330.00; thence South 50 degrees 31 minutes 39 seconds West 5,505.68 feet on the Northwest line of said State Lease No. 15683 to its Southwest corner located on the South line of said Block 45 having Coordinates of X = 2,687,350.00 and Y = 292,830.00; thence West 375.00 feet on the South line of said Block 45 to a point having Coordinates of X = 2,686,975.00 and Y = 292,830.00; thence North 8,875.00 feet to a point on the South line of State Lease No. 2001, as amended, having Coordinates of X = 2,686,975.00 and Y = 301,705.00; thence East 5,375.00 feet on the South line of said State Lease No. 2001 to its Southwest corner having Coordinates of X = 2,692,350.00 and Y = 301,705.00; thence North 2,925.00 feet on the East line of said State Lease No. 2001 to its Northeast corner, also being the Southeast corner of State Lease No. 1237, as amended, having Coordinates of X = 2,692,350.00 and Y = 304,630.00; thence North 2,950.00 feet on the East line of said State Lease No. 1237 to its Northeast corner located on the North line of said Block 45 having Coordinates of X = 2,692,350.00 and Y = 307,580.00 feet; thence East 2,000.00 feet on the North line of said Block 45 to its Northeast corner having Coordinates of X = 2,694,350.00 and Y = 307,580.00; thence South 11,250.00 feet on the East line of said Block 45 to the point of beginning, containing approximately 1,380.64 acres, as shown outlined in red on a plat on file in the Office of Mineral Resources, Department of Natural Resources. All bearings, distances and coordinates are based on Louisiana Coordinate System of 1927 (South Zone).

NOTE: The State of Louisiana does hereby reserve, and this lease shall be subject to, the imprescriptible right of surface use in the nature of a servitude in favor of the Department of Natural Resources, including its Offices and Commissions, for the sole purpose of implementing, constructing, servicing and maintaining approved coastal zone management and/or restoration projects. Utilization of any and all rights derived under this lease by the mineral lessee, its agents, successors or assigns, shall not interfere with nor hinder the reasonable surface use by the Department of Natural Resources, its Offices or Commissions, as hereinabove reserved.

Applicant: Cypress Energy Corporation

Bidder	Cash Payment	Price / Acre	Rental	Oil	Gas	Other



TR. 32527
1,380.64 +/- ACS.
JUNE, 2000

P.O.B.
X= 2,694,350.00
Y= 296,330.00

BRETON SOUND AREA
PLAQUEMINES PARISH

OFFICIAL COPY
OFFICE OF MINERAL RESOURCES
DEPT. OF NATURAL RESOURCES
DO NOT REMOVE

3000 0 3000 Feet

61