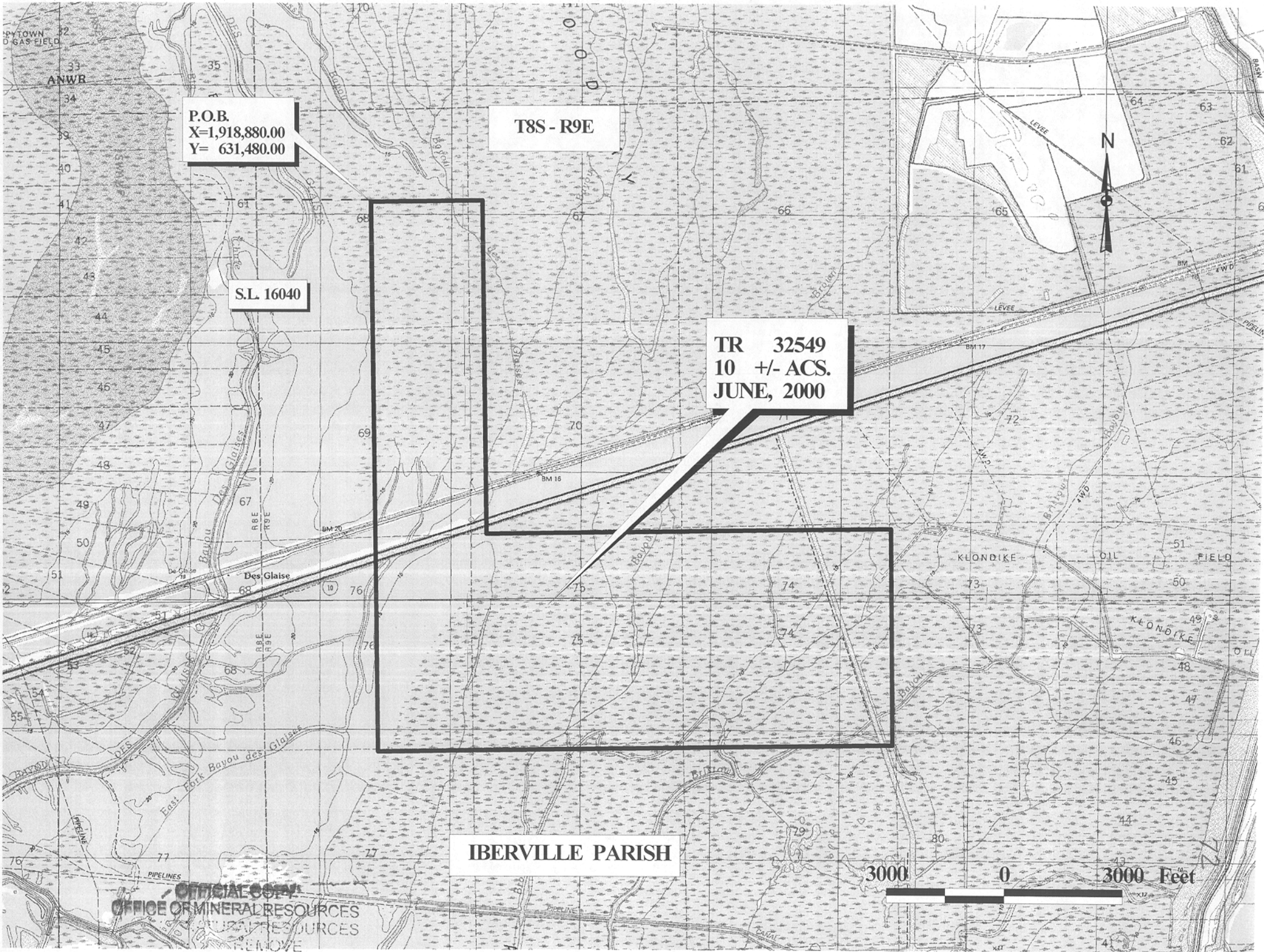


**TRACT 32549 - Iberville Parish, Louisiana**

All of the lands now or formerly constituting the beds and bottoms of all water bodies of every nature and description and all islands and other lands formed by accretion or reliction, except tax lands, owned by and not under mineral lease from the State of Louisiana on June 14, 2000, situated in Iberville Parish, Louisiana, within the following described boundaries: Beginning at the Northeast corner of State Lease No. 16040 having Coordinates of X = 1,918,880.00 and Y = 631,480.00; thence East 2,800.00 feet to a point having Coordinates of X = 1,921,680.00 and Y = 631,480.00; thence South 8,500.00 feet to a point having Coordinates of X = 1,921,680.00 and Y = 622,980.00; thence East 10,200.00 feet to a point having Coordinates of X = 1,931,880.00 and Y = 622,980.00; thence South 5,500.00 feet to a point having Coordinates of X = 1,931,880.00 and Y = 617,480.00; thence West 13,000.00 feet to the Southeast corner of said State Lease No. 16040 having Coordinates of X = 1,918,880.00 and Y = 617,480.00; thence North 14,000.00 feet along the East line of said State Lease No. 16040 to the point of beginning, containing approximately 10 acres, as shown outlined in red on a plat on file in the Office of Mineral Resources, Department of Natural Resources. All bearings, distances and coordinates are based on Louisiana Coordinate System of 1927 (South Zone).

Applicant: A.S. Ruffin, Jr.

Bidder	Cash Payment	Price / Acre	Rental	Oil	Gas	Other



P.O.B.  
X=1,918,880.00  
Y= 631,480.00

T8S - R9E

S.L 16040

TR 32549  
10 +/- ACS.  
JUNE, 2000

IBERVILLE PARISH

OFFICIAL COPY  
OFFICE OF MINERAL RESOURCES  
NATURAL RESOURCES  
REMOVE

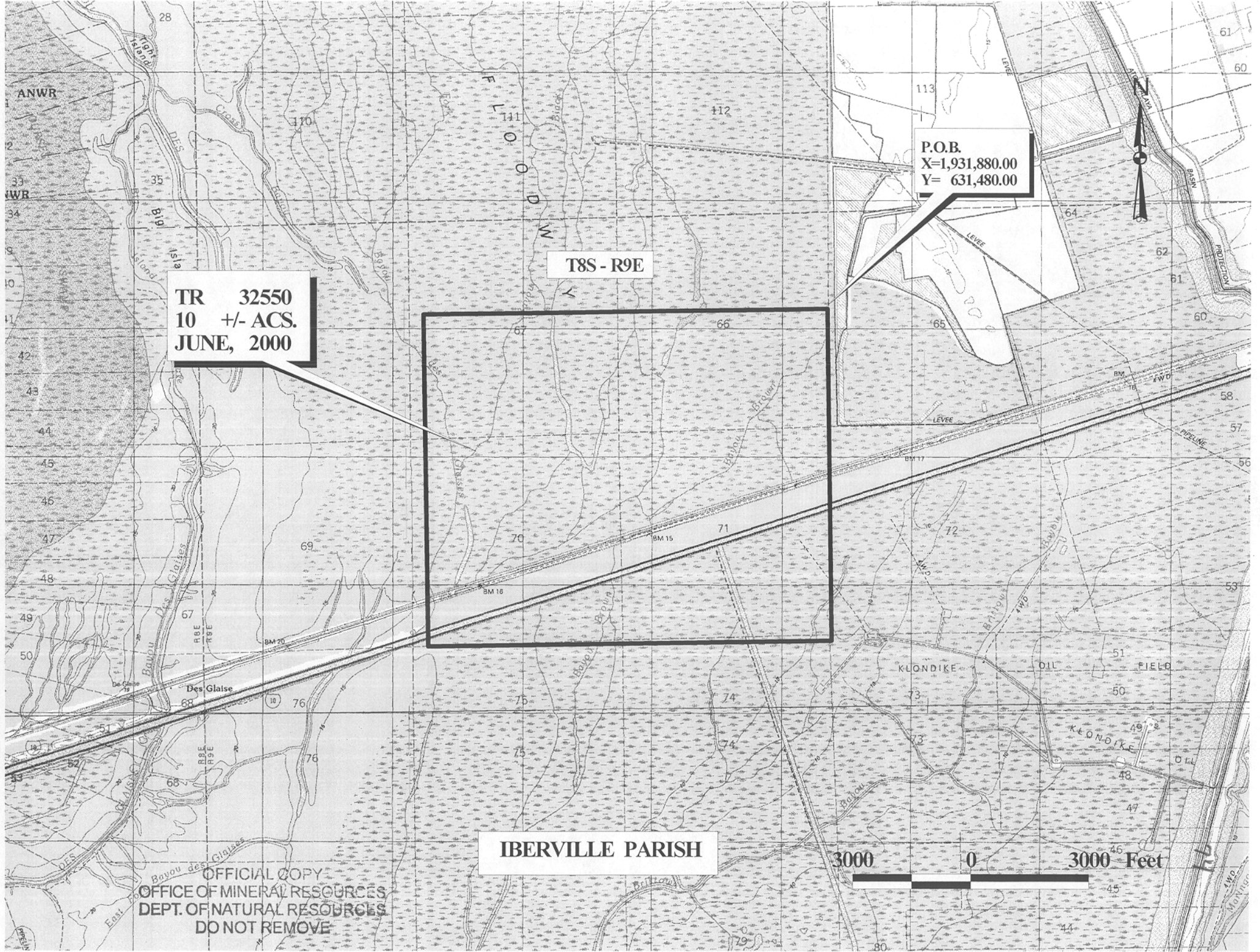
**TRACT 32550 - Iberville Parish, Louisiana**

All of the lands now or formerly constituting the beds and bottoms of all water bodies of every nature and description and all islands and other lands formed by accretion or reliction, except tax lands, owned by and not under mineral lease from the State of Louisiana on June 14, 2000, situated in Iberville Parish, Louisiana, within the following described boundaries: Beginning at a point having Coordinates of X = 1,931,880.00 and Y = 631,480.00; thence South 8,500.00 feet to a point having Coordinates of X = 1,931,880.00 and Y = 622,980.00; thence West 10,200.00 feet to a point having Coordinates of X = 1,921,680.00 and Y = 622,980.00; thence North 8,500.00 feet to a point having Coordinates of X = 1,921,680.00 and Y = 631,480.00; thence East 10,200.00 feet to the point of beginning, containing approximately 10 acres, as shown outlined in red on a plat on file in the Office of Mineral Resources, Department of Natural Resources. All bearings, distances and coordinates are based on Louisiana Coordinate System of 1927 (South Zone).

Applicant: A.S. Ruffin, Jr.

Bidder	Cash Payment	Price / Acre	Rental	Oil	Gas	Other





TR 32550  
10 +/- ACS.  
JUNE, 2000

T8S - R9E

P.O.B.  
X=1,931,880.00  
Y= 631,480.00

IBERVILLE PARISH

3000 0 3000 Feet

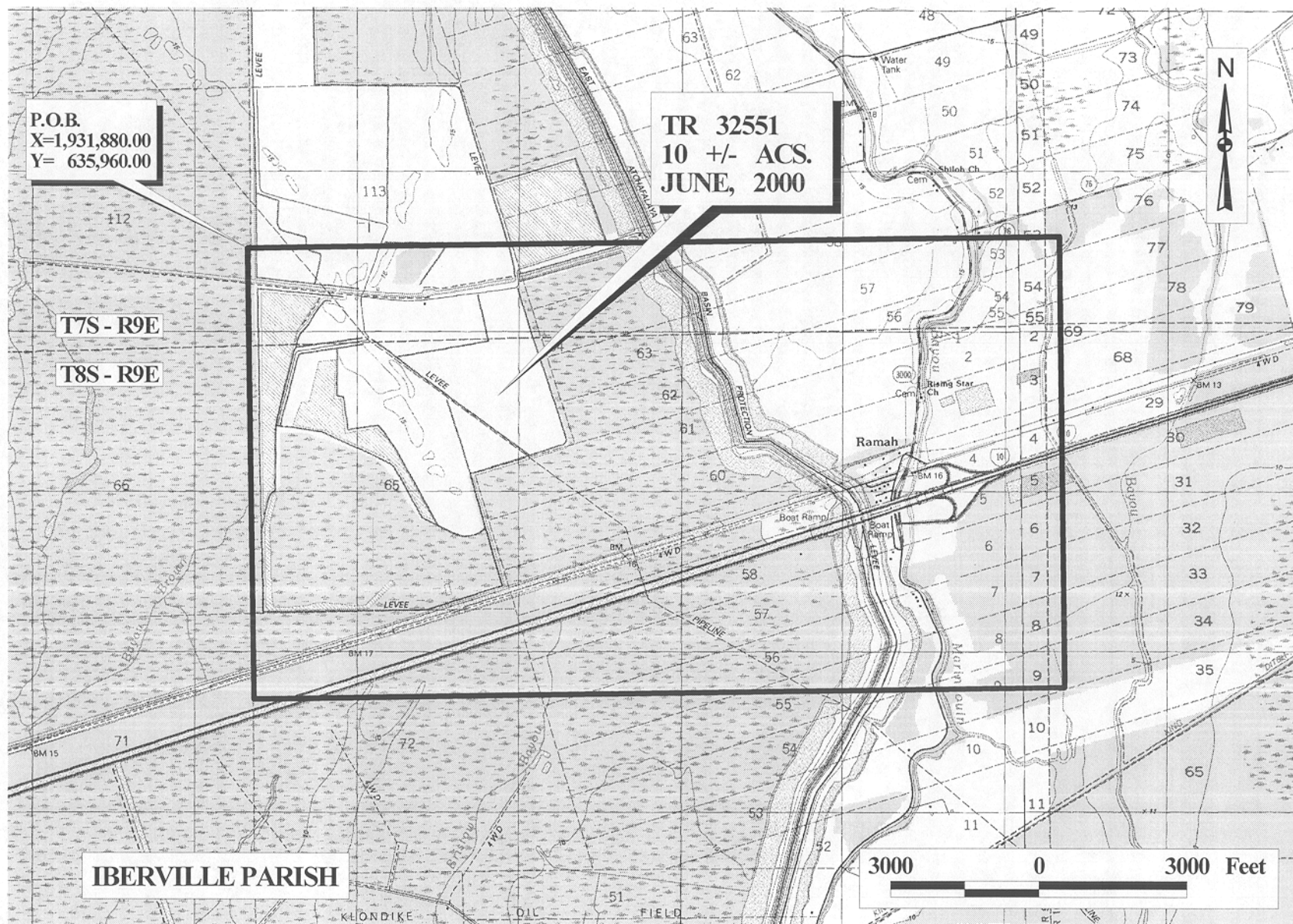
OFFICIAL COPY  
OFFICE OF MINERAL RESOURCES  
DEPT. OF NATURAL RESOURCES  
DO NOT REMOVE

**TRACT 32551 - Iberville Parish, Louisiana**

All of the lands now or formerly constituting the beds and bottoms of all water bodies of every nature and description and all islands and other lands formed by accretion or reliction, except tax lands, owned by and not under mineral lease from the State of Louisiana on June 14, 2000, situated in Iberville Parish, Louisiana, within the following described boundaries: Beginning at a point having Coordinates of X = 1,931,880.00 and Y = 635,960.00; thence East 16,420.00 feet; thence South 9,240.00 feet to a point having Coordinates of X = 1,948,300.00 and Y = 626,720.00; thence West 16,420.00 feet; thence North 9,240.00 feet to the point of beginning, containing approximately 10 acres, as shown outlined in red on a plat on file in the Office of Mineral Resources, Department of Natural Resources. All bearings, distances and coordinates are based on Louisiana Coordinate System of 1927 (South Zone).

Applicant: A.S. Ruffin, Jr.

Bidder	Cash Payment	Price / Acre	Rental	Oil	Gas	Other



OFFICIAL COPY  
OFFICE OF MINERAL RESOURCES  
DEPT. OF NATURAL RESOURCES  
DO NOT REMOVE