

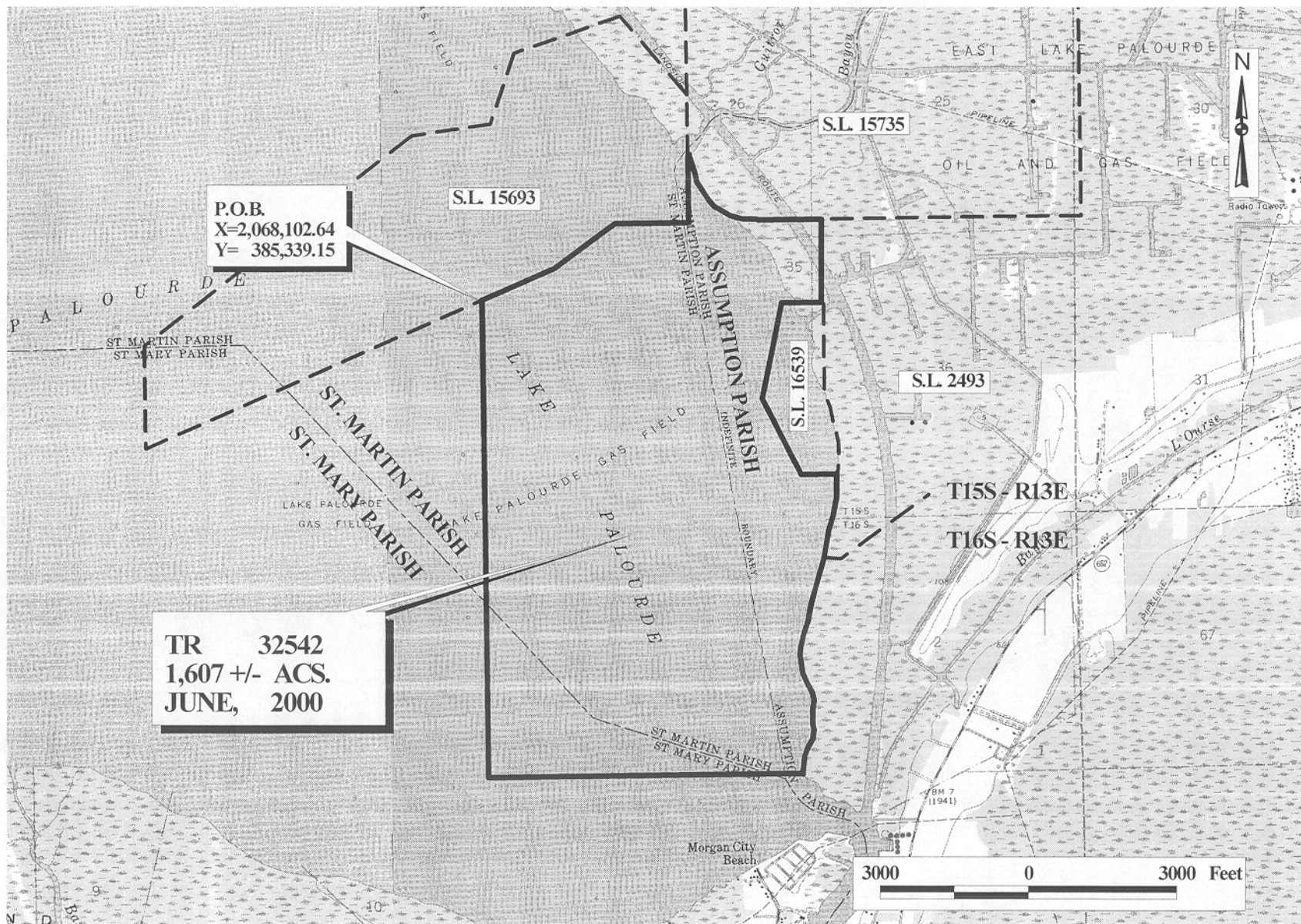
TRACT 32542 - Assumption, St. Martin and St. Mary Parishes, Louisiana

All of the lands now or formerly constituting the beds and bottoms of all water bodies of every nature and description and all islands and other lands formed by accretion or reliction, except tax lands, owned by and not under mineral lease from the State of Louisiana on June 14, 2000, situated in Assumption, St. Martin and St. Mary Parishes, Louisiana, within the following described boundaries: Beginning at a point on the South boundary of State Lease No. 15693 having Coordinates of X = 2,068,102.64 and Y = 385,339.15; thence along the South and East boundaries of said State Lease No. 15693 the following courses: North 66 degrees 37 minutes 58 seconds East 1,589.57 feet to a point having Coordinates of X = 2,069,561.84 and Y = 385,969.61; North 54 degrees 16 minutes 23 seconds East 1,525.25 feet to a point having Coordinates of X = 2,070,800.05 and Y = 386,860.23; East 1,499.95 feet to its Southeast corner having Coordinates of X = 2,072,300.00 and Y = 386,860.23; North approximately 957 feet to an intersection point on the Eastern bank line of Lake Palourde having a Coordinate of X = 2,072,300.00; thence Southeasterly approximately 102 feet to the most Northerly Southwest corner of State Lease No. 15735 having a Coordinate of X = 2,072,360.00; thence Southeasterly along the Western boundary of said State Lease No. 15735 to its Southwest corner; thence Westerly approximately 1,481 feet along the Southern boundary of said State Lease No. 15735 to the Northwest corner of State Lease No. 2493, as amended; thence Southerly approximately 1,495 feet along the West boundary of said State Lease No. 2493 to the Northeast corner of State Lease No. 16539 having a Coordinate of Y = 385,207.74; thence along the Northern, Western and Southern boundaries of said State Lease No. 16539 the following courses: West approximately 782 feet to its Northwest corner having Coordinates of X = 2,074,144.31 and Y = 385,207.74; South 12 degrees 00 minutes 00 seconds West 1,997.44 feet to a point having Coordinates of X = 2,073,729.02 and Y = 383,253.95; South 26 degrees 00 minutes 00 seconds East 1,731.62 feet to its Southwest corner having Coordinates of X = 2,074,488.11 and Y = 381,697.58; East approximately 692 feet to its Southeast corner on the Western boundary of said State Lease No. 2493 having a Coordinate of Y = 381,697.58; thence Southwesterly along the Western boundary of said State Lease No. 2493 to its Southwest corner; thence Southwesterly and Southeasterly along the East bank line of Lake Palourde to an intersection point with a line having a Coordinate of Y = 375,600.00; thence West approximately 6,305 feet to a point having Coordinates of X = 2,068,102.64 and Y = 375,600.00; thence North 9,379.15 feet to the point of beginning, containing approximately 1,607 acres, as shown outlined in red on a plat on file in the Office of Mineral Resources, Department of Natural Resources. All bearings, distances and coordinates are based on Louisiana Coordinate System of 1927 (South Zone).

NOTE: The State of Louisiana does hereby reserve, and this lease shall be subject to, the imprescriptible right of surface use in the nature of a servitude in favor of the Department of Natural Resources, including its Offices and Commissions, for the sole purpose of implementing, constructing, servicing and maintaining approved coastal zone management and/or restoration projects. Utilization of any and all rights derived under this lease by the mineral lessee, its agents, successors or assigns, shall not interfere with nor hinder the reasonable surface use by the Department of Natural Resources, its Offices or Commissions, as hereinabove reserved.

Applicant: Robin L. Hebert

Bidder	Cash Payment	Price / Acre	Rental	Oil	Gas	Other



OFFICIAL COPY
OFFICE OF MINERAL RESOURCES
DEPT. OF NATURAL RESOURCES
DO NOT REMOVE

TRACT 32543 - Assumption, St. Martin and St. Mary Parishes, Louisiana

All of the lands now or formerly constituting the beds and bottoms of all water bodies of every nature and description and all islands and other lands formed by accretion or reliction, except tax lands, owned by and not under mineral lease from the State of Louisiana on June 14, 2000, situated in Assumption, St. Martin and St. Mary Parishes, Louisiana, within the following described boundaries: Beginning at a point having Coordinates of X = 2,065,500.00 and Y = 375,600.00; thence East approximately 8,908 feet to the East bank line of Lake Palourde having a Coordinate of Y = 375,600.00; thence Southeasterly and Southwesterly on the said East bank line of Lake Palourde and the left descending bank of Bayou Boeuf to a point having a Coordinate of Y = 370,800.00; thence West approximately 9,140 feet to a point on the East line of State Lease No. 16589 having Coordinates of X = 2,065,500.00 and Y = 370,800.00; thence North approximately 2,662 feet on the East line of said State Lease No. 16589 to its Northeast corner; thence North approximately 2,138 feet to the point of beginning, containing approximately 623 acres, as shown outlined in red on a plat on file in the Office of Mineral Resources, Department of Natural Resources. All bearings, distances and coordinates are based on Louisiana Coordinate System of 1927 (South Zone).

NOTE: The State of Louisiana does hereby reserve, and this lease shall be subject to, the imprescriptible right of surface use in the nature of a servitude in favor of the Department of Natural Resources, including its Offices and Commissions, for the sole purpose of implementing, constructing, servicing and maintaining approved coastal zone management and/or restoration projects. Utilization of any and all rights derived under this lease by the mineral lessee, its agents, successors or assigns, shall not interfere with nor hinder the reasonable surface use by the Department of Natural Resources, its Offices or Commissions, as hereinabove reserved.

Applicant: Robin L. Hebert

Bidder	Cash Payment	Price / Acre	Rental	Oil	Gas	Other

