

TRACT 32601 - PORTION OF BLOCK 47, MAIN PASS AREA, REVISED, Plaquemines Parish, Louisiana

All of the lands now or formerly constituting the beds and bottoms of all water bodies of every nature and description and all islands and other lands formed by accretion or reliction, except tax lands, belonging to the State of Louisiana and not under mineral lease on June 14, 2000, situated in Plaquemines Parish, Louisiana, and more particularly described as follows: Beginning at the Northwest corner of Block 47, Main Pass Area, Revised, having Coordinates of X = 2,647,350.00 and Y = 278,080.00; thence East 3,200.00 feet on the North line of said Block 47 to the Northwest corner of State Lease No. 16392 having Coordinates of X = 2,650,550.00 and Y = 278,080.00; thence South 2,600.00 feet on the West line of said State Lease No. 16392 to its Southwest corner, also being the Northwest corner of State Lease No. 16570 having Coordinates of X = 2,650,550.00 and Y = 275,480.00; thence South 4,000.00 feet on the West line of said State Lease No. 16570 to its Southwest corner, also being a point on the North line of State Lease No. 1268, as amended, having Coordinates of X = 2,650,550.00 and Y = 271,480.00; thence on the boundaries of said State Lease No. 1268 the following courses: West 525.00 feet and South 1,200.00 feet to the Northeast corner of State Lease No. 16370 having Coordinates of X = 2,650,025.00 and Y = 270,280.00; thence West 2,675.00 feet on the North line of said State Lease No. 16370 to its Northwest corner, also being a point on the West line of said Block 47 having Coordinates of X = 2,647,350.00 and Y = 270,280.00; thence North 7,800.00 feet on the West line of said Block 47 to the point of beginning, containing approximately 558.54 acres, as shown outlined in red on a plat on file in the Office of Mineral Resources, Department of Natural Resources. All bearings, distances and coordinates are based on Louisiana Coordinate System of 1927 (South Zone).

NOTE: The State of Louisiana does hereby reserve, and this lease shall be subject to, the imprescriptible right of surface use in the nature of a servitude in favor of the Department of Natural Resources, including its Offices and Commissions, for the sole purpose of implementing, constructing, servicing and maintaining approved coastal zone management and/or restoration projects. Utilization of any and all rights derived under this lease by the mineral lessee, its agents, successors or assigns, shall not interfere with nor hinder the reasonable surface use by the Department of Natural Resources, its Offices or Commissions, as hereinabove reserved.

Applicant: Robert A. Schroeder, Inc.

Bidder	Cash Payment	Price / Acre	Rental	Oil	Gas	Other

R
E



P.O.B
X=2,647,350.00
Y= 278,080.00

BLOCK 49

BLOCK 50

S.L. 16393
BRETON SOUND AREA

MAIN PASS AREA, REVISED

S.L. 16392

BLOCK 48

BLOCK 47

S.L. 16570

TR 32601
558.54 +/- ACS.
JUNE, 2000

S.L. 1268

S.L. 16370

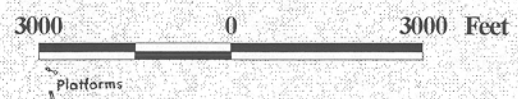
Oil Well

11
Bird Island
14

TAYLOR

PASS

PLAQUEMINES PARISH



OFFICIAL COPY
OFFICE OF MINERAL RESOURCES
DEPT. OF NATURAL RESOURCES
DO NOT REMOVE

192

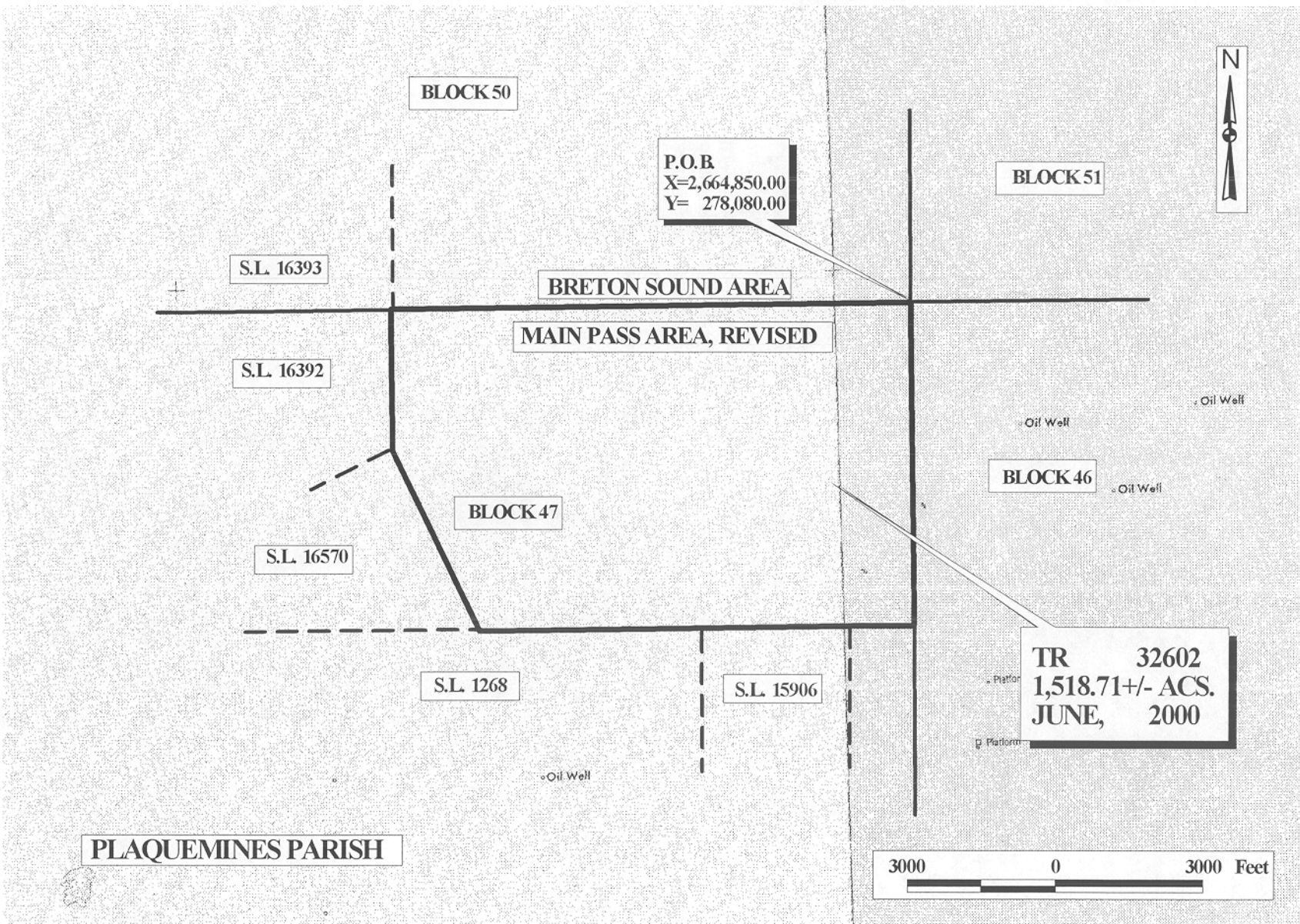
TRACT 32602 - PORTION OF BLOCK 47, MAIN PASS AREA, REVISED, Plaquemines Parish, Louisiana

All of the lands now or formerly constituting the beds and bottoms of all water bodies of every nature and description and all islands and other lands formed by accretion or reliction, except tax lands, belonging to the State of Louisiana and not under mineral lease on June 14, 2000, situated in Plaquemines Parish, Louisiana, and more particularly described as follows: Beginning at the Northeast corner of Block 47, Main Pass Area, Revised, having Coordinates of X = 2,664,850.00 and Y = 278,080.00; thence South 6,600.00 feet on the East line of said Block 47 to a point having Coordinates of X = 2,664,850.00 and Y = 271,480.00; thence West 1,305.60 feet to the Northeast corner of State Lease No. 15906 having Coordinates of X = 2,663,544.40 and Y = 271,480.00; thence West 3,194.40 feet on the North line of said State Lease No. 15906 to its Northwest corner, also being the Northeast corner of State Lease No. 1268, as amended, having Coordinates of X = 2,660,350.00 and Y = 271,480.00; thence West 4,300.00 feet on the North line of said State Lease No. 1268 to the Southeast corner of State Lease No. 16570 having Coordinates of X = 2,656,050.00 and Y = 271,480.00; thence North 24 degrees 40 minutes 37 seconds West 4,071.86 feet on the East line of said State Lease No. 16570 to its Northeast corner, also being the Southeast corner of State Lease No. 16392 having Coordinates of X = 2,654,350.00 and Y = 275,180.00; thence North 2,900.00 feet on the East line of said State Lease No. 16392 to its Northeast corner, also being a point on the North line of said Block 47 having Coordinates of X = 2,654,350.00 and Y = 278,080.00; thence East 10,500.00 feet on the North line of said Block 47 to the point of beginning, containing approximately 1,518.71 acres, as shown outlined in red on a plat on file in the Office of Mineral Resources, Department of Natural Resources. All bearings, distances and coordinates are based on Louisiana Coordinate System of 1927 (South Zone).

NOTE: The State of Louisiana does hereby reserve, and this lease shall be subject to, the imprescriptible right of surface use in the nature of a servitude in favor of the Department of Natural Resources, including its Offices and Commissions, for the sole purpose of implementing, constructing, servicing and maintaining approved coastal zone management and/or restoration projects. Utilization of any and all rights derived under this lease by the mineral lessee, its agents, successors or assigns, shall not interfere with nor hinder the reasonable surface use by the Department of Natural Resources, its Offices or Commissions, as hereinabove reserved.

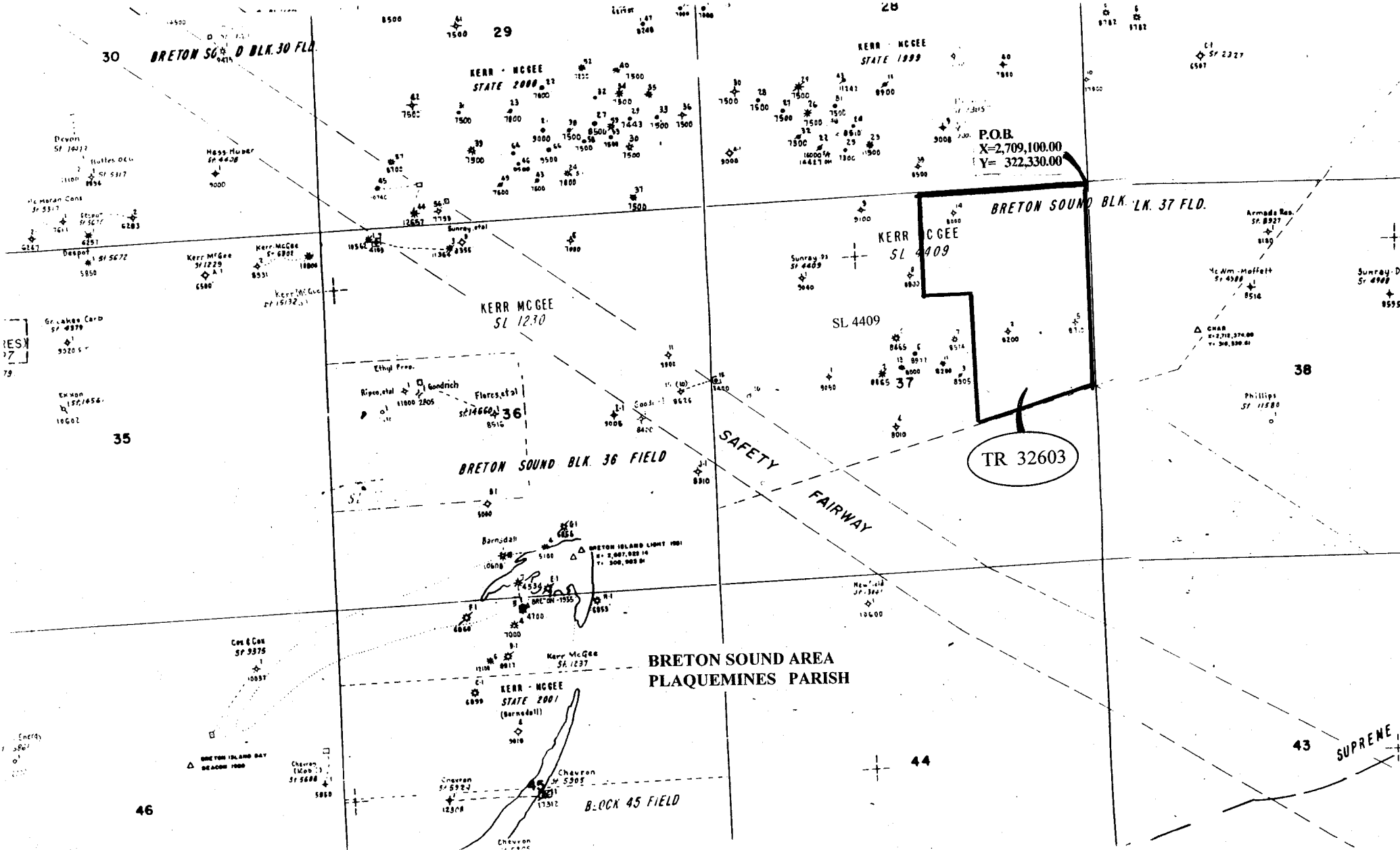
Applicant: Robert A. Schroeder, Inc.

Bidder	Cash Payment	Price / Acre	Rental	Oil	Gas	Other



OFFICIAL COPY
 OFFICE OF MINERAL RESOURCES
 DEPT. OF NATURAL RESOURCES
 DO NOT REMOVE

194



P.O.B.
X=2,709,100.00
Y= 322,330.00

TR 32603

MAP NOT TO SCALE

NOT TO BE USED WITH A PORTION BID
FOR INFORMATIONAL PURPOSES ONLY!

F & A Map Services
Division of PI

195

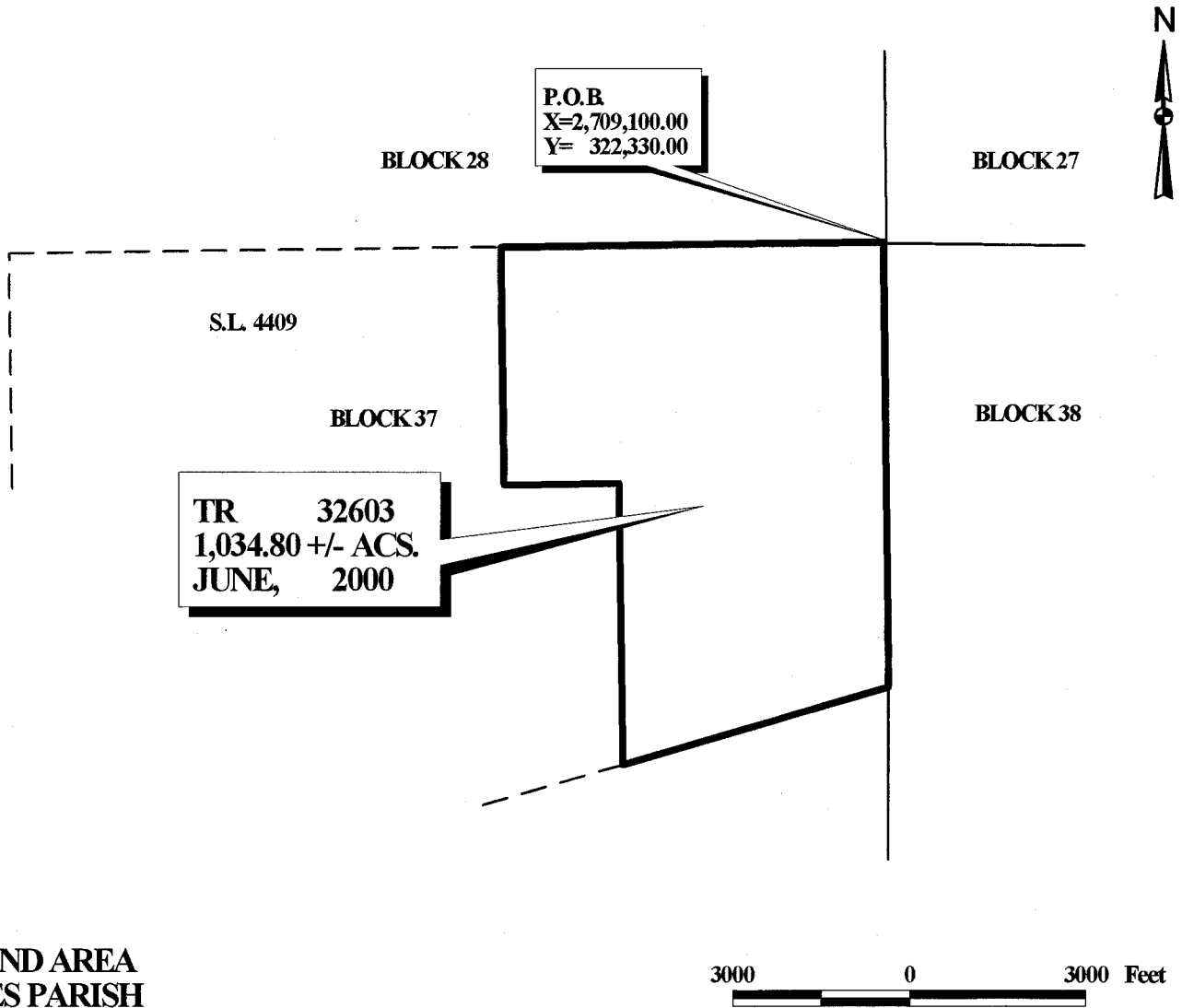
TRACT 32603 - PORTION OF BLOCK 37, BRETON SOUND AREA, Plaquemines Louisiana

All of the lands now or formerly constituting the beds and bottoms of all water bodies of every nature and description and all islands and other lands formed by accretion or reliction, except tax lands, belonging to the State of Louisiana and not under mineral lease on June 14, 2000, situated in Plaquemines Parish, Louisiana, and more particularly described as follows: Beginning at the Northeast corner of Block 37, Breton Sound Area, having Coordinates of X = 2,709,100.00 and Y = 322,330.00; thence South 7,600.00 feet on the East line of said Block 37 to a point having Coordinates of X = 2,709,100.00 and Y = 314,730.00; thence Southwesterly on a straight line to a point on the South line of State Lease No. 4409, as amended, having Coordinates of X = 2,704,580.00 and Y = 313,470.00; thence on the boundary of said State Lease No. 4409 the following courses: North 4,800.00 feet to a point having Coordinates of X = 2,704,580.00 and Y = 318,270.00, West 1,940.00 feet to a point having Coordinates of X = 2,702,640.00 and Y = 318,270.00 and North 4,060.00 feet to a point on the North line of said Block 37 having Coordinates of X = 2,702,640.00 and Y = 322,330.00; thence East 6,460.00 feet on the North line of said Block 37 to the point of beginning, containing approximately 1,034.80 acres, as shown outlined in red on a plat on file in the Office of Mineral Resources, Department of Natural Resources. All bearings, distances and coordinates are based on Louisiana Coordinate System of 1927 (South Zone).

NOTE: The State of Louisiana does hereby reserve, and this lease shall be subject to, the imprescriptible right of surface use in the nature of a servitude in favor of the Department of Natural Resources, including its Offices and Commissions, for the sole purpose of implementing, constructing, servicing and maintaining approved coastal zone management and/or restoration projects. Utilization of any and all rights derived under this lease by the mineral lessee, its agents, successors or assigns, shall not interfere with nor hinder the reasonable surface use by the Department of Natural Resources, its Offices or Commissions, as hereinabove reserved.

Applicant: Cypress Energy Corporation

Bidder	Cash Payment	Price / Acre	Rental	Oil	Gas	Other



**BRETON SOUND AREA
PLAQUEMINES PARISH**

OFFICIAL COPY
OFFICE OF MINERAL RESOURCES
DEPT. OF NATURAL RESOURCES
DO NOT REMOVE

194