

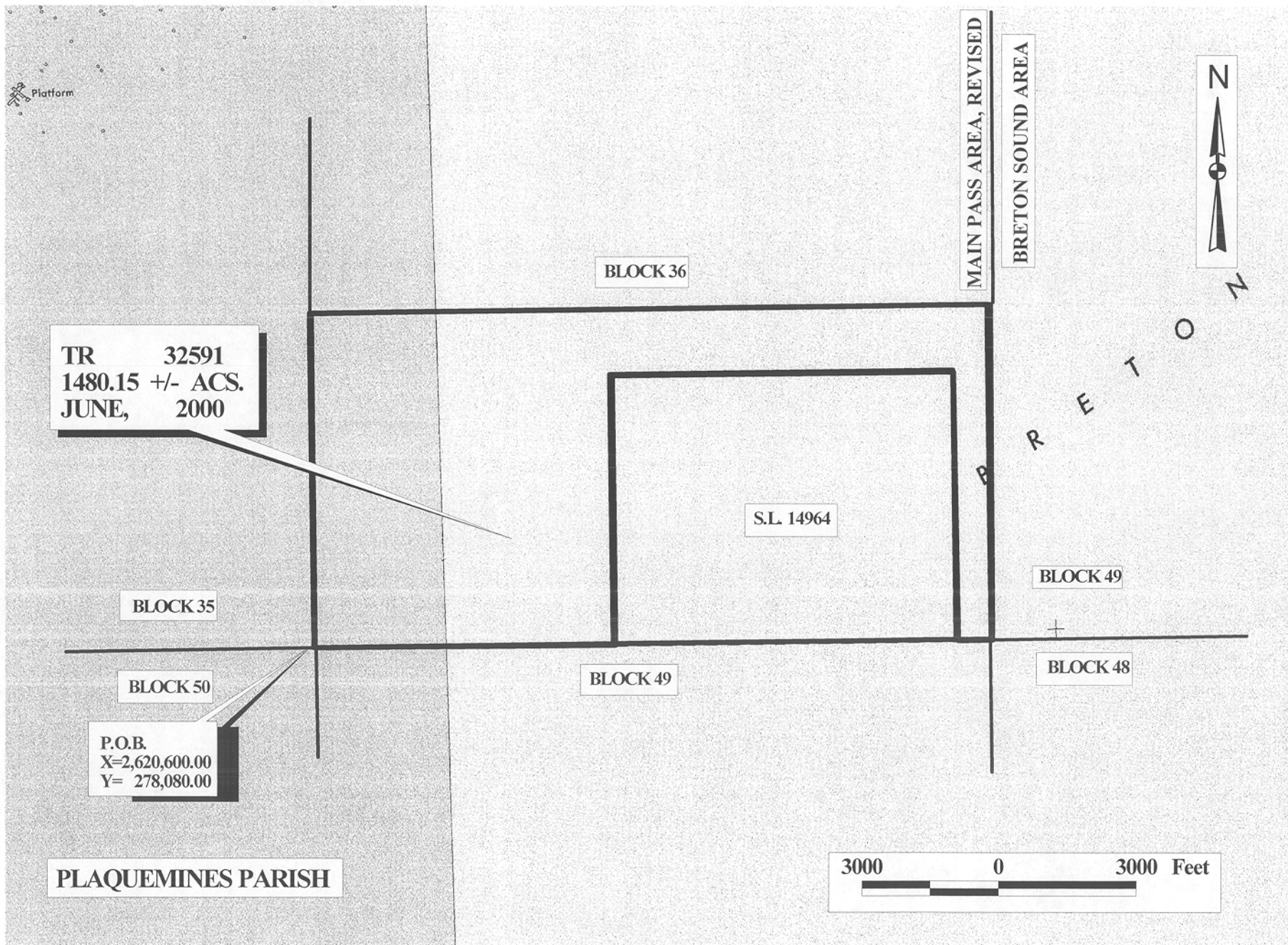
TRACT 32591 - PORTION OF BLOCK 36, MAIN PASS AREA, REVISED, Plaquemines Parish, Louisiana

All of the lands now or formerly constituting the beds and bottoms of all water bodies of every nature and description and all islands and other lands formed by accretion or reliction, except tax lands, belonging to the State of Louisiana and not under mineral lease on June 14, 2000, situated in Plaquemines Parish, Louisiana, and more particularly described as follows: Beginning at the Southwest corner of Block 36, Main Pass Area, Revised, having Coordinates of X = 2,620,600.00 and Y = 278,080.00; thence North 7,375.00 feet on the West line of said Block 36 to a point having Coordinates of X = 2,620,600.00 and Y = 285,455.00; thence East 14,750.00 feet to a point on the East line of said Block 36 having Coordinates of X = 2,635,350.00 and Y = 285,455.00; thence South 7,375.00 feet on the East line of said Block 36 to its Southeast corner having Coordinates of X = 2,635,350.00 and Y = 278,080.00; thence West 766.45 feet on the South line of said Block 36 to the Southeast corner of State Lease No. 14964, as amended, having Coordinates of X = 2,634,583.55 and Y = 278,080.00; thence on the boundaries of said State Lease No. 14964 the following courses: North 5,933.52 feet, West 7,467.05 feet and South 5,933.52 feet to its Southwest corner, also being a point on the South line of said Block 36 having Coordinates of X = 2,627,116.50 and Y = 278,080.00; thence West 6,516.50 feet on the South line of said Block 36 to the point of beginning, containing approximately 1,480.15 acres, as shown outlined in red on a plat on file in the Office of Mineral Resources, Department of Natural Resources. All bearings, distances and coordinates are based on Louisiana Coordinate System of 1927 (South Zone).

NOTE: The State of Louisiana does hereby reserve, and this lease shall be subject to, the imprescriptible right of surface use in the nature of a servitude in favor of the Department of Natural Resources, including its Offices and Commissions, for the sole purpose of implementing, constructing, servicing and maintaining approved coastal zone management and/or restoration projects. Utilization of any and all rights derived under this lease by the mineral lessee, its agents, successors or assigns, shall not interfere with nor hinder the reasonable surface use by the Department of Natural Resources, its Offices or Commissions, as hereinabove reserved.

Applicant: Robert A. Schroeder, Inc.

Bidder	Cash Payment	Price / Acre	Rental	Oil	Gas	Other



OFFICIAL COPY
OFFICE OF MINERAL RESOURCES
DEPT. OF NATURAL RESOURCES
DO NOT REMOVE

TRACT 32592 - PORTION OF BLOCK 50, MAIN PASS AREA, REVISED, Plaquemines Parish, Louisiana

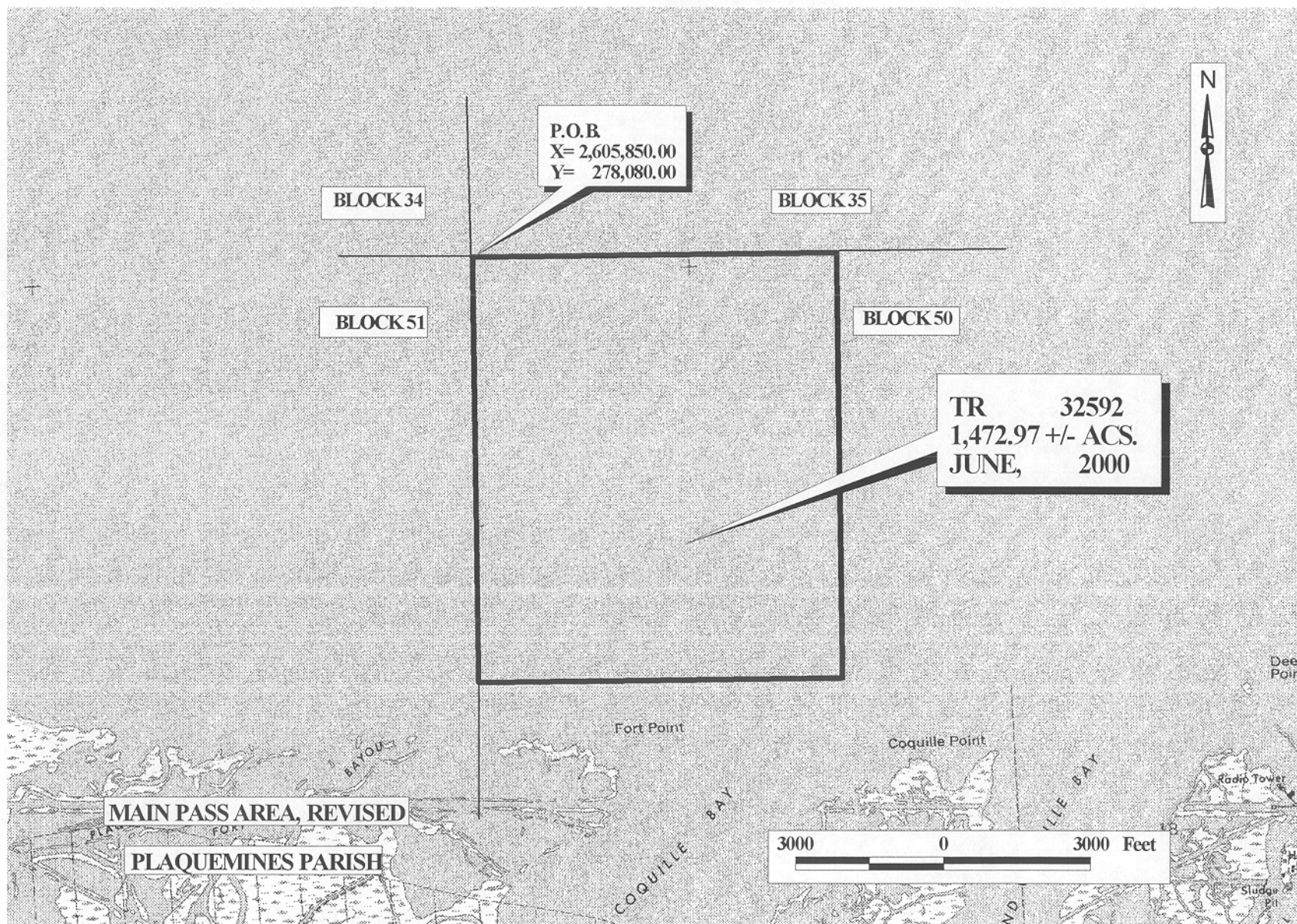
All of the lands now or formerly constituting the beds and bottoms of all water bodies of every nature and description and all islands and other lands formed by accretion or reliction, except tax lands, belonging to the State of Louisiana and not under mineral lease on June 14, 2000, situated in Plaquemines Parish, Louisiana, and more particularly described as follows: Beginning at a point having Coordinates of X = 2,605,850.00 and Y = 278,080.00, also being the Northwest corner of Block 50, Main Pass Area, Revised; thence East 7,375.00 feet on the North line of said Block 50 to a point having Coordinates of X = 2,613,225.00 and Y = 278,080.00; thence South 8,700.00 feet to a point having Coordinates of X = 2,613,225.00 and Y = 269,380.00; thence West 7,375.00 feet to a point having Coordinates of X = 2,605,850.00 and Y = 269,380.00, also being a point on the West line of said Block 50; thence North 8,700.00 feet on the West line of said Block 50 to the point of beginning, containing approximately 1,472.97 acres, as shown outlined in red on a plat on file in the Office of Mineral Resources, Department of Natural Resources. All bearings, distances and coordinates are based on Louisiana Coordinate System of 1927 (South Zone).

NOTE: The above tract is located in or near an oyster restricted area and all operations in such area must be conducted in strict conformity with the stipulations and/or regulations of the Louisiana Department of Wildlife and Fisheries.

NOTE: The State of Louisiana does hereby reserve, and this lease shall be subject to, the imprescriptible right of surface use in the nature of a servitude in favor of the Department of Natural Resources, including its Offices and Commissions, for the sole purpose of implementing, constructing, servicing and maintaining approved coastal zone management and/or restoration projects. Utilization of any and all rights derived under this lease by the mineral lessee, its agents, successors or assigns, shall not interfere with nor hinder the reasonable surface use by the Department of Natural Resources, its Offices or Commissions, as hereinabove reserved.

Applicant: Robert A. Schroeder, Inc.

Bidder	Cash Payment	Price / Acre	Rental	Oil	Gas	Other



OFFICIAL COPY
OFFICE OF MINERAL RESOURCES
DEPT. OF NATURAL RESOURCES
DO NOT REMOVE

TRACT 32593 - PORTION OF BLOCK 50, MAIN PASS AREA, REVISED, Plaquemines Parish, Louisiana

All of the lands now or formerly constituting the beds and bottoms of all water bodies of every nature and description and all islands and other lands formed by accretion or reliction, except tax lands, belonging to the State of Louisiana and not under mineral lease on June 14, 2000, situated in Plaquemines Parish, Louisiana, and more particularly described as follows: Beginning at a point having Coordinates of X = 2,620,600.00 and Y = 278,080.00, also being the Northeast corner of Block 50, Main Pass Area, Revised; thence South 8,700.00 feet on the East line of said Block 50 to a point having Coordinates of X = 2,620,600.00 and Y = 269,380.00; thence West 7,375.00 feet to a point having Coordinates of X = 2,613,225.00 and Y = 269,380.00; thence North 8,700.00 feet to a point having Coordinates of X = 2,613,225.00 and Y = 278,080.00, also being a point on the North line of said Block 50; thence East 7,375.00 feet on the North line of said Block 50 to the point of beginning, **LESS AND EXCEPT**, if any, that portion described in a Judgment by the District Court of the United States, Eastern District of Louisiana, New Orleans Division titled Isaac R. Price, et al v. Gulf Refining Co., et al, a copy of which is recorded in C.O.B. 243, page 600 of the Clerk of Court Records of Plaquemines Parish, Louisiana, containing approximately **1,472.97 acres**, as shown outlined in red on a plat on file in the Office of Mineral Resources, Department of Natural Resources. All bearings, distances and coordinates are based on Louisiana Coordinate System of 1927 (South Zone).

NOTE: The above tract is located in or near an oyster restricted area and all operations in such area must be conducted in strict conformity with the stipulations and/or regulations of the Louisiana Department of Wildlife and Fisheries.

NOTE: The State of Louisiana does hereby reserve, and this lease shall be subject to, the imprescriptible right of surface use in the nature of a servitude in favor of the Department of Natural Resources, including its Offices and Commissions, for the sole purpose of implementing, constructing, servicing and maintaining approved coastal zone management and/or restoration projects. Utilization of any and all rights derived under this lease by the mineral lessee, its agents, successors or assigns, shall not interfere with nor hinder the reasonable surface use by the Department of Natural Resources, its Offices or Commissions, as hereinabove reserved.

Applicant: Robert A. Schroder, Inc.

Bidder	Cash Payment	Price / Acre	Rental	Oil	Gas	Other

