

TRACT 32589 - Plaquemines Parish, Louisiana

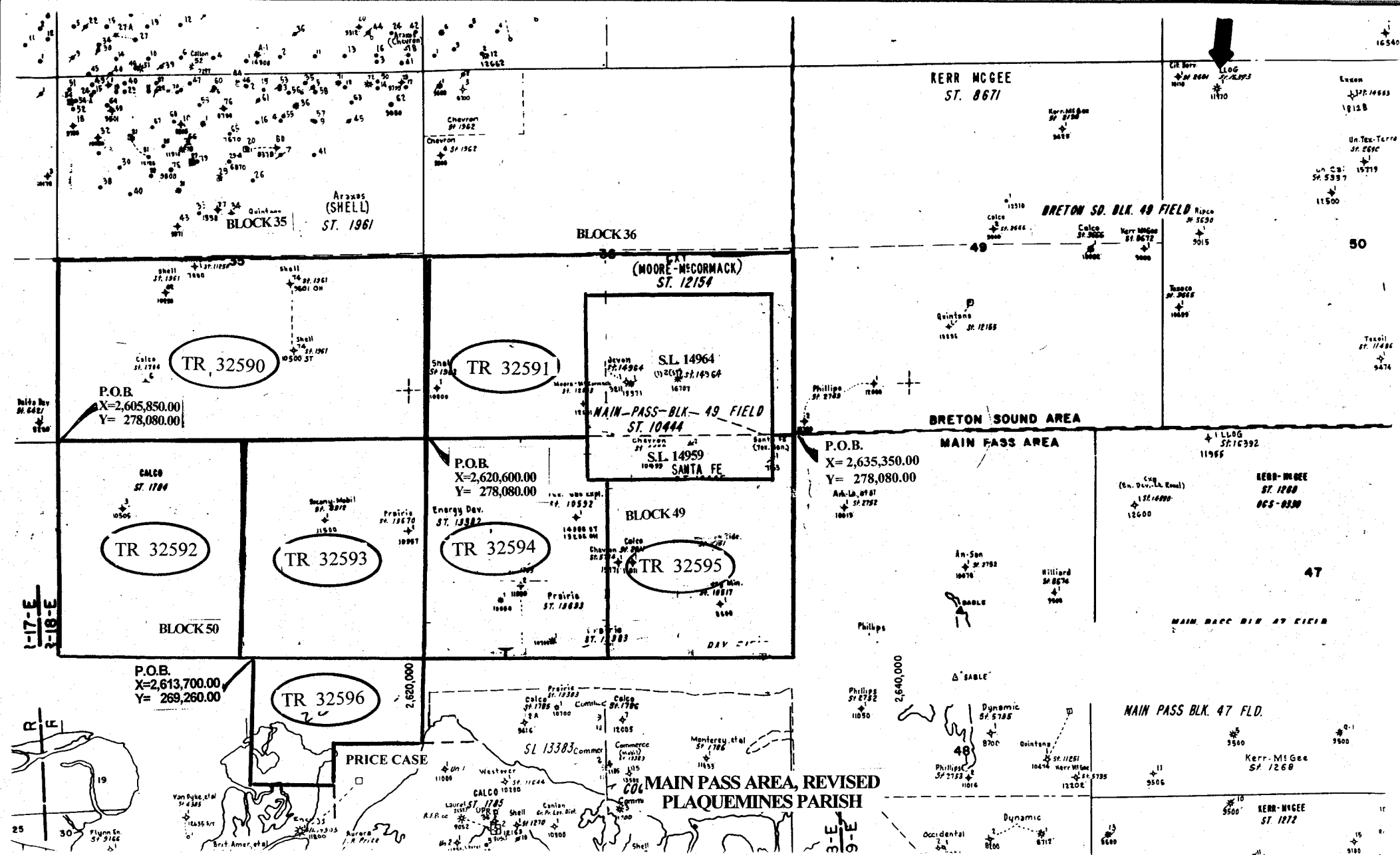
All of the lands now or formerly constituting the beds and bottoms of all water bodies of every nature and description and all islands and other lands formed by accretion or reliction, except tax lands, owned by and not under mineral lease from the State of Louisiana on June 14, 2000, situated in Plaquemines Parish, Louisiana, within the following described boundaries: Beginning at a point having Coordinates of X = 2,613,000.76 and Y = 225,316.05; thence North 88 degrees 16 minutes 41 seconds East 6,678.95 feet to a point having Coordinates of X = 2,619,676.70 and Y = 225,516.74; thence South 01 degrees 43 minutes 15 seconds East 5,280.00 feet to a point having Coordinates of X = 2,619,835.26 and Y = 220,239.13; thence South 88 degrees 16 minutes 41 seconds West 6,678.95 feet to a point having Coordinates of X = 2,613,159.31 and Y = 220,038.43; thence North 01 degrees 43 minutes 15 seconds West 5,280.00 feet to the point of beginning, containing approximately 81 acres, as shown outlined in red on a plat on file in the Office of Mineral Resources, Department of Natural Resources. All bearings, distances and coordinates are based on Louisiana Coordinate System of 1927 (South Zone).

NOTE: The above tract is located in or near an oyster restricted area and all operations in such area must be conducted in strict conformity with the stipulations and/or regulations of the Louisiana Department of Wildlife and Fisheries.

NOTE: The State of Louisiana does hereby reserve, and this lease shall be subject to, the imprescriptible right of surface use in the nature of a servitude in favor of the Department of Natural Resources, including its Offices and Commissions, for the sole purpose of implementing, constructing, servicing and maintaining approved coastal zone management and/or restoration projects. Utilization of any and all rights derived under this lease by the mineral lessee, its agents, successors or assigns, shall not interfere with nor hinder the reasonable surface use by the Department of Natural Resources, its Offices or Commissions, as hereinabove reserved.

Applicant: Texaco Exploration and Production Inc.

Bidder	Cash Payment	Price / Acre	Rental	Oil	Gas	Other



F & A Map Services
Division of PI

MAP NOT TO SCALE

NOT TO BE USED WITH A PORTION BID
FOR INFORMATIONAL PURPOSES ONLY!

165

TRACT 32590 - PORTION OF BLOCK 35, MAIN PASS AREA, REVISED, Plaquemines Parish, Louisiana

All of the lands now or formerly constituting the beds and bottoms of all water bodies of every nature and description and all islands and other lands formed by accretion or reliction, except tax lands, belonging to the State of Louisiana and not under mineral lease on June 14, 2000, situated in Plaquemines Parish, Louisiana, and more particularly described as follows: Beginning at the Southwest corner of Block 35, Main Pass Area, Revised, Plaquemines Parish, Louisiana, having Coordinates of X = 2,605,850.00 and Y = 278,080.00; thence North 7,365.80 feet along the West line of said Block 35 to the Southwest corner of State Lease No. 1961, as amended, having Coordinates of X = 2,605,850.00 and Y = 285,445.80; thence East 14,750.00 feet along the South boundary of said State Lease No. 1961 to its Southeast corner having Coordinates of X = 2,620,600.00 and Y = 285,445.80, also being a point on the East line of said Block 35; thence South 7,365.80 feet along the East line of said Block 35 to its Southeast corner having Coordinates of X = 2,620,600.00 and Y = 278,080.00; thence West 14,750.00 feet along the South line of said Block 35 to the point of beginning, containing approximately 2,494.16 acres, as shown outlined in red on a plat on file in the Office of Mineral Resources, Department of Natural Resources. All bearings, distances and coordinates are based on Louisiana Coordinate System of 1927 (South Zone).

NOTE: The State of Louisiana does hereby reserve, and this lease shall be subject to, the imprescriptible right of surface use in the nature of a servitude in favor of the Department of Natural Resources, including its Offices and Commissions, for the sole purpose of implementing, constructing, servicing and maintaining approved coastal zone management and/or restoration projects. Utilization of any and all rights derived under this lease by the mineral lessee, its agents, successors or assigns, shall not interfere with nor hinder the reasonable surface use by the Department of Natural Resources, its Offices or Commissions, as hereinabove reserved.

Applicant: Robert A. Schroder, Inc.

Bidder	Cash Payment	Price / Acre	Rental	Oil	Gas	Other

