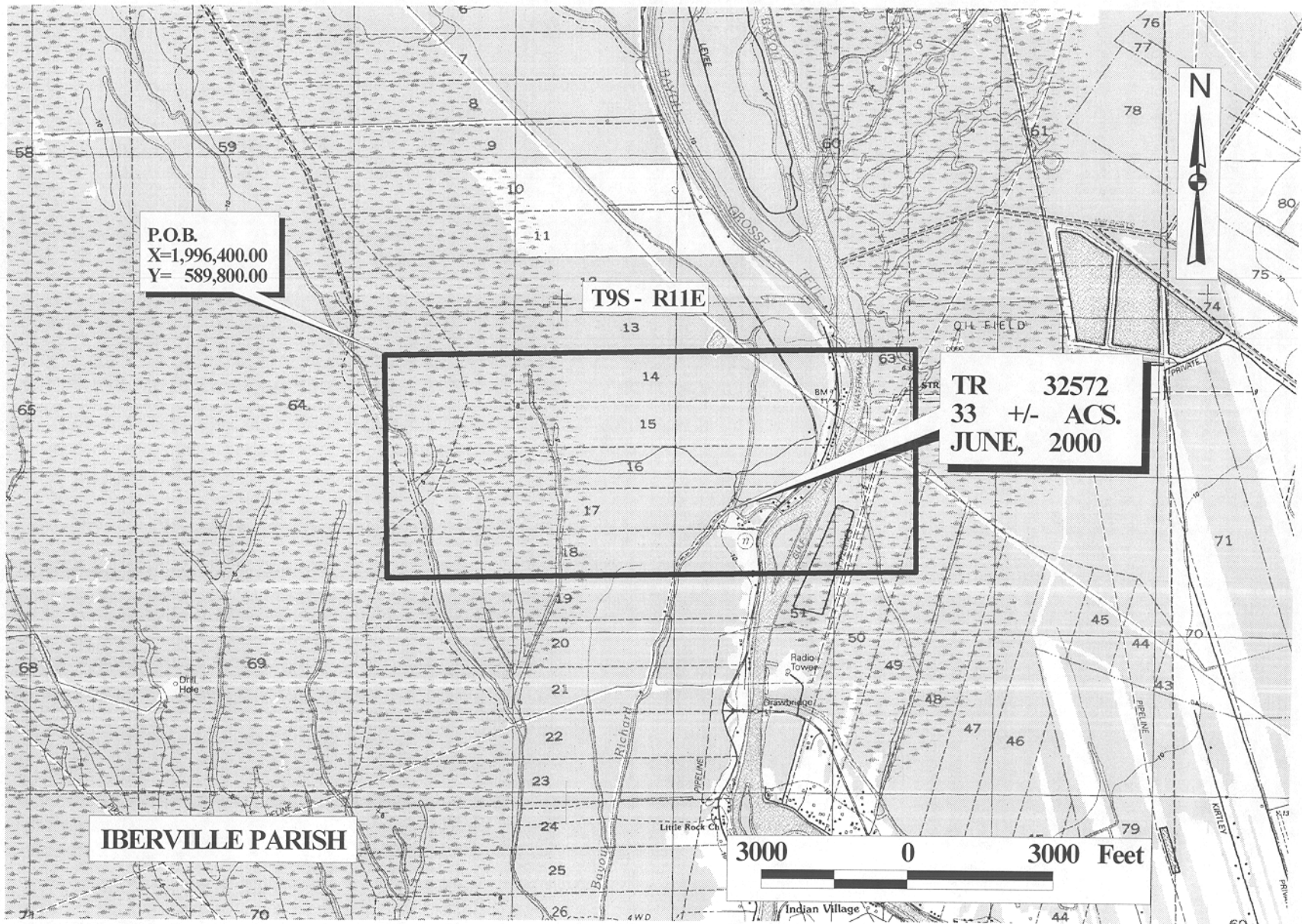


**TRACT 32572 - Iberville Parish, Louisiana**

All of the lands now or formerly constituting the beds and bottoms of all water bodies of every nature and description and all islands and other lands formed by accretion or reliction, except tax lands, owned by and not under mineral lease from the State of Louisiana on June 14, 2000, situated in Iberville Parish, Louisiana, within the following described boundaries: Beginning at a point having Coordinates of X = 1,996,400.00 and Y = 589,800.00; thence East 10,800.00 feet to a point having Coordinates of X = 2,007,200.00 and Y = 589,800.00; thence South 4,600.00 feet to a point having Coordinates of X = 2,007,200.00 and Y = 585,200.00; thence West 10,800.00 feet to a point having Coordinates of X = 1,996,400.00 and Y = 585,200.00; thence North 4,600.00 feet to the point of beginning, containing approximately **33 acres**, as shown outlined in red on a plat on file in the Office of Mineral Resources, Department of Natural Resources. All bearings, distances and coordinates are based on Louisiana Coordinate System of 1927 (South Zone).

Applicant: William R. Denman

Bidder	Cash Payment	Price / Acre	Rental	Oil	Gas	Other



**IBERVILLE PARISH**

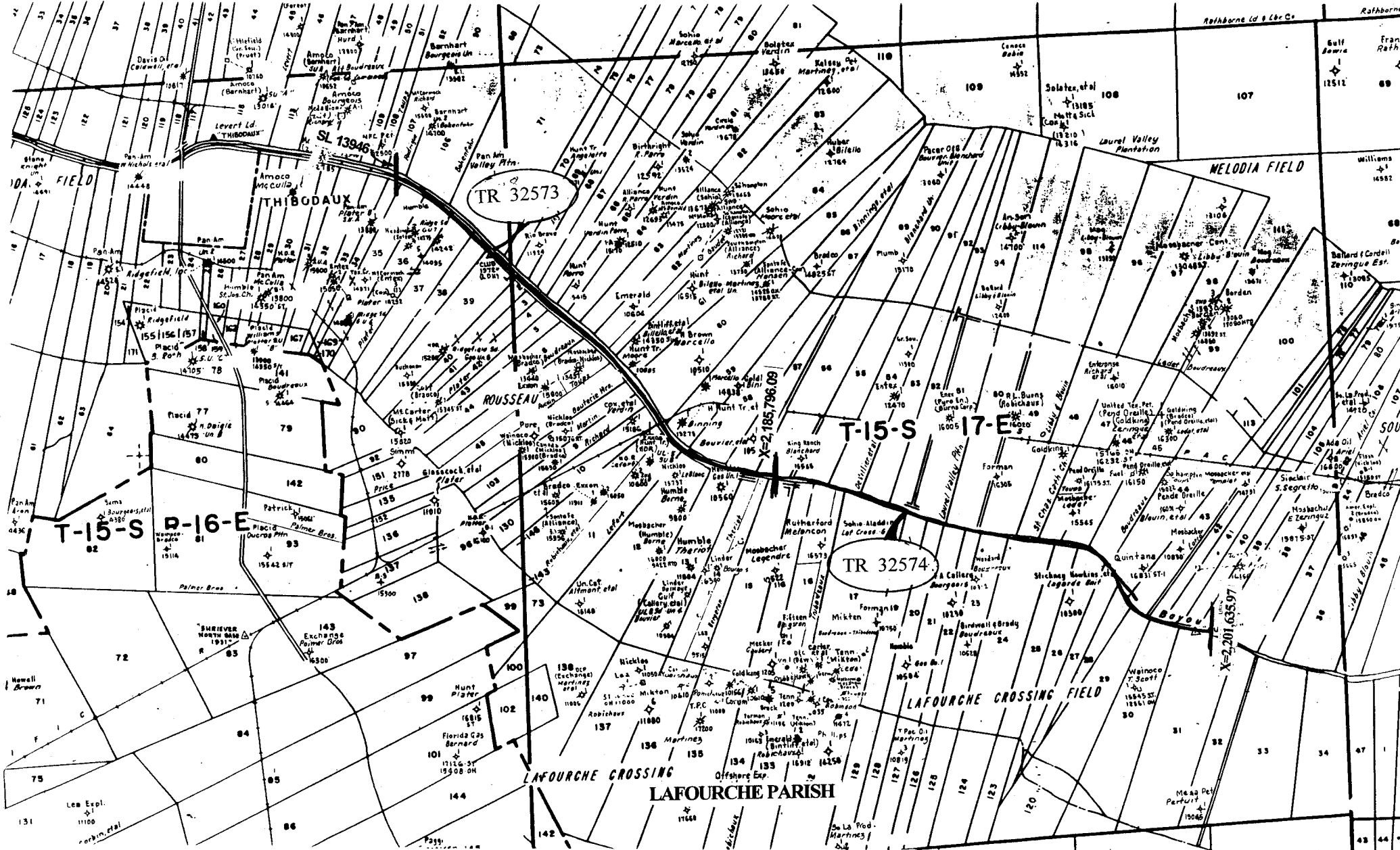
**P.O.B.  
X=1,996,400.00  
Y= 589,800.00**

**T9S - R11E**

**TR 32572  
33 +/- ACS.  
JUNE, 2000**

**3000 0 3000 Feet**

OFFICIAL COPY  
OFFICE OF MINERAL RESOURCES  
DEPT. OF NATURAL RESOURCES  
DO NOT REMOVE



F & A Map Services  
 Division of PI

MAP NOT TO SCALE

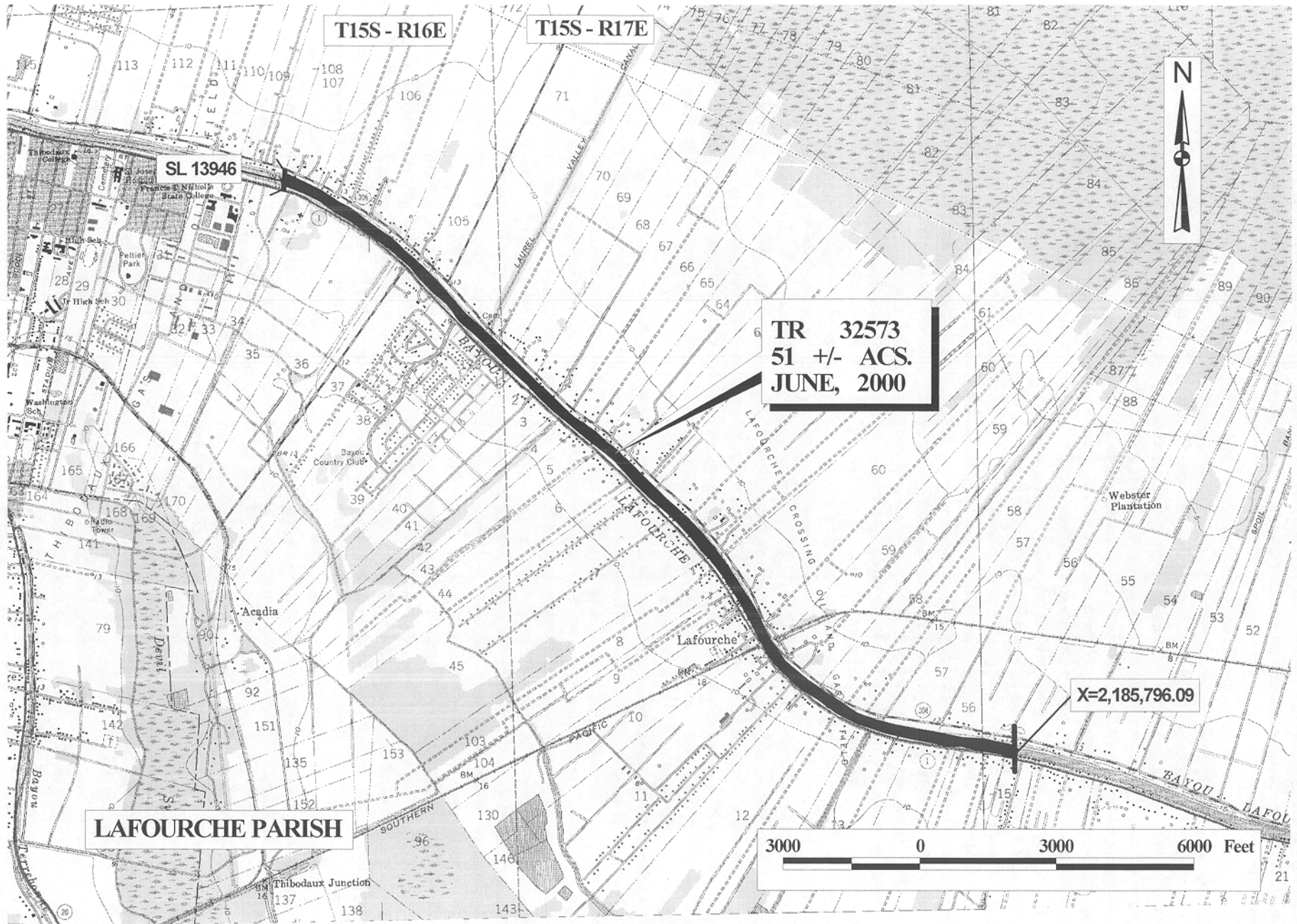
NOT TO BE USED WITH A PORTION BID  
 FOR INFORMATIONAL PURPOSES ONLY!

**TRACT 32573 - Lafourche Parish, Louisiana**

All of the lands now or formerly constituting the beds and bottoms of Bayou Lafourche and all islands and other lands formed by accretion or reliction, except tax lands, owned by and not under mineral lease from the State of Louisiana on June 14, 2000, situated in Lafourche Parish, Louisiana, within the following described boundaries: All of Bayou Lafourche bounded on the West or upstream side by the Eastern boundary of State Lease No. 13946, as amended, being the Eastern boundary of the following two units: (1) the Nicholls B RB SU B, as established by Office of Conservation Order No. 326-K-1, dated June 21, 1993, effective May 18, 1993, and (2) the Bourgeois B RB SU A, as established by Office of Conservation Order No. 326-E-3, dated May 27, 1993, effective May 18, 1993, and on the East or downstream side by a North-South line having a Coordinate of X = 2,185,796.09, containing approximately **51 acres**, as shown outlined in red on a plat on file in the Office of Mineral Resources, Department of Natural Resources. All bearings, distances and coordinates are based on Louisiana Coordinate System of 1927 (South Zone).

Applicant: Chalk Oil

Bidder	Cash Payment	Price / Acre	Rental	Oil	Gas	Other



OFFICIAL COPY  
 OFFICE OF MINERAL RESOURCES  
 DEPT. OF NATURAL RESOURCES  
 DO NOT REMOVE

126