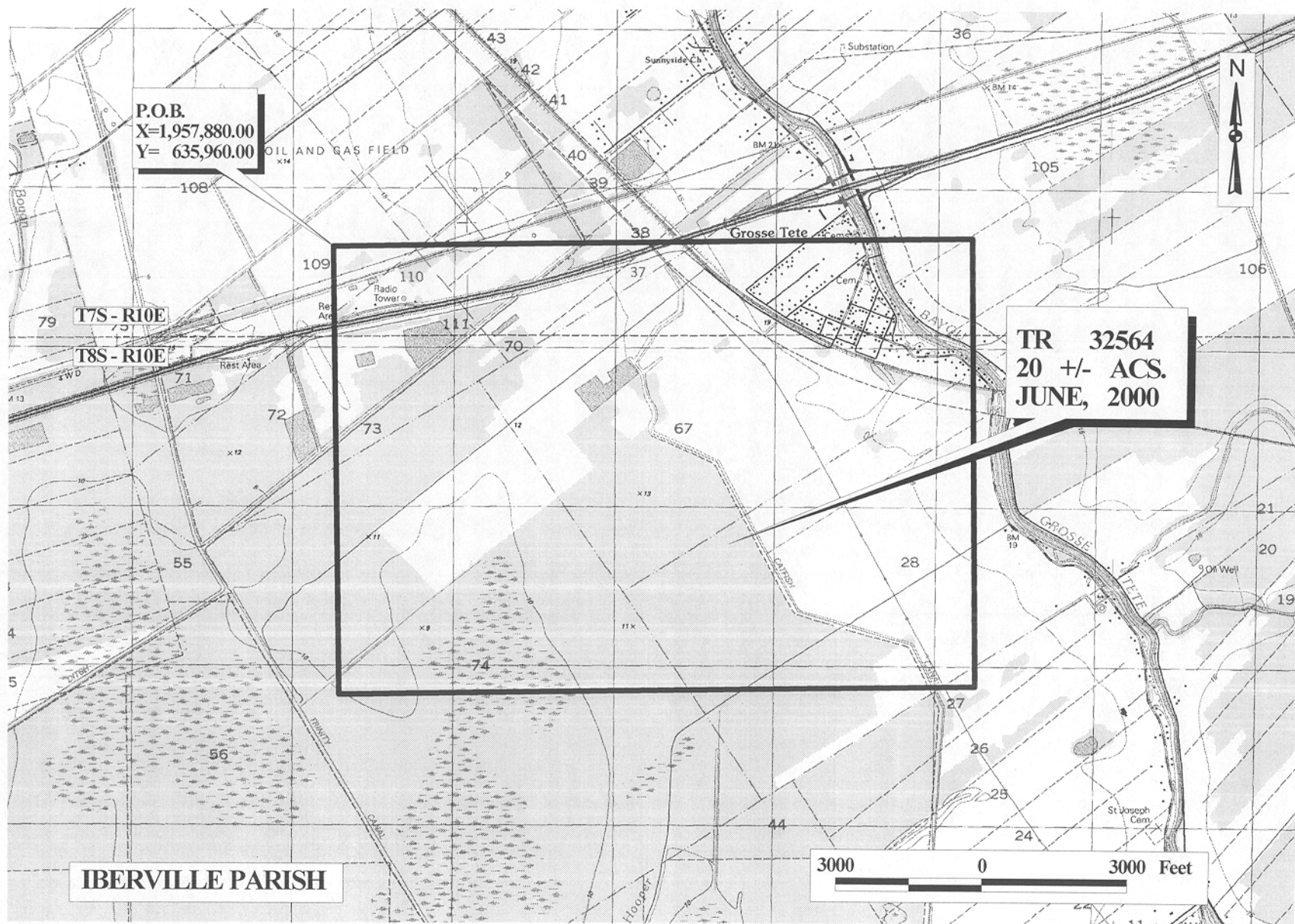


TRACT 32564 - Iberville Parish, Louisiana

All of the lands now or formerly constituting the beds and bottoms of all water bodies of every nature and description and all islands and other lands formed by accretion or reliction, except tax lands, owned by and not under mineral lease from the State of Louisiana on June 14, 2000, situated in Iberville Parish, Louisiana, within the following described boundaries: Beginning at a point having Coordinates of X = 1,957,880.00 and Y = 635,960.00; thence East 13,000.00 feet; thence South 9,240.00 feet to a point having Coordinates of X = 1,970,880.00 and Y = 626,720.00; thence West 13,000.00 feet; thence North 9,240.00 feet to the point of beginning, containing approximately **20 acres**, as shown outlined in red on a plat on file in the Office of Mineral Resources, Department of Natural Resources. All bearings, distances and coordinates are based on Louisiana Coordinate System of 1927 (South Zone).

Applicant: A.S. Ruffin, Jr.

Bidder	Cash Payment	Price / Acre	Rental	Oil	Gas	Other



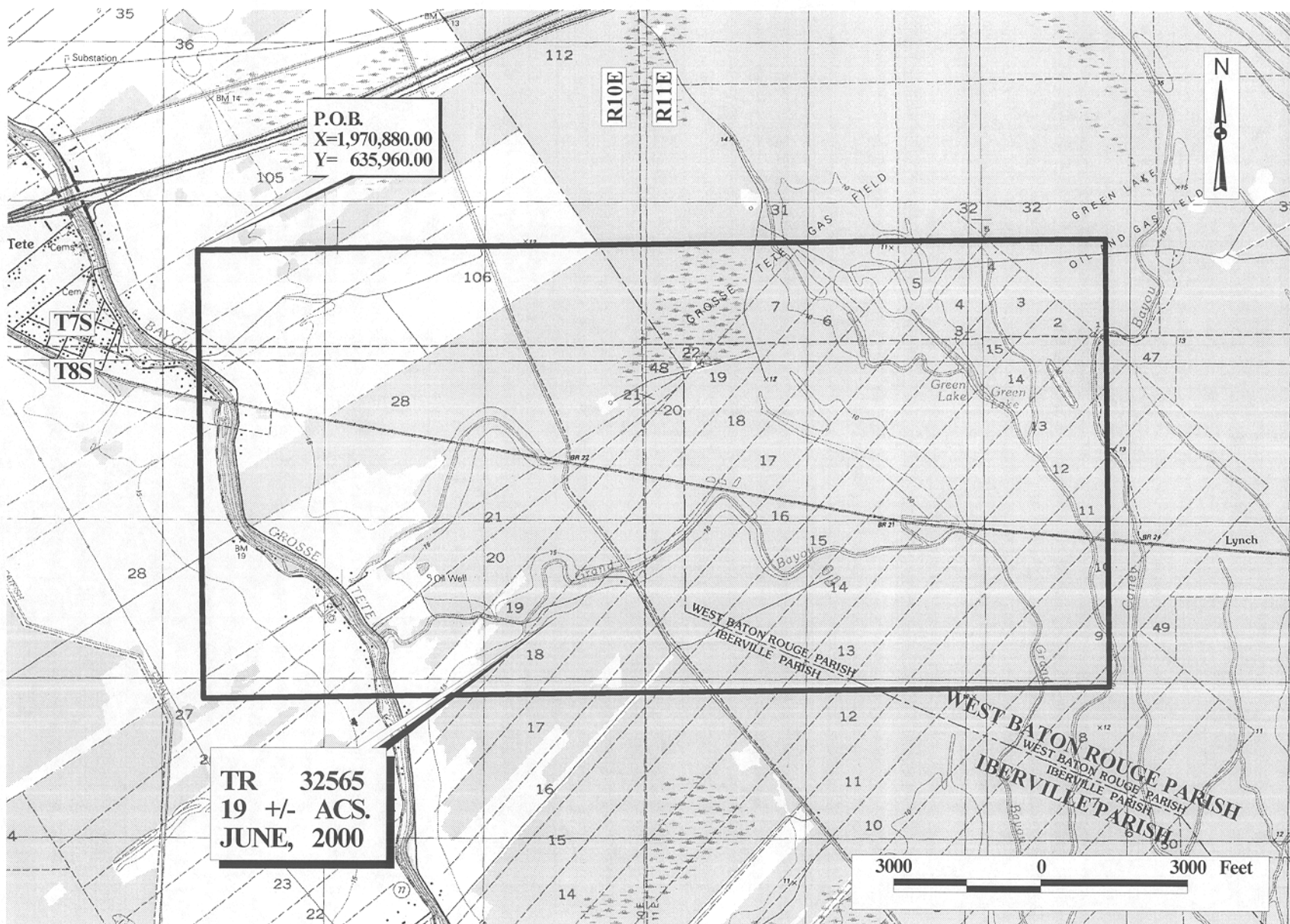
OFFICIAL COPY
 OFFICE OF MINERAL RESOURCES
 DEPT. OF NATURAL RESOURCES
 DO NOT REMOVE

TRACT 32565 - Iberville and West Baton Rouge Parishes, Louisiana

All of the lands now or formerly constituting the beds and bottoms of all water bodies of every nature and description and all islands and other lands formed by accretion or reliction, except tax lands, owned by and not under mineral lease from the State of Louisiana on June 14, 2000, situated in Iberville and West Baton Rouge Parishes, Louisiana, within the following described boundaries: Beginning at a point having Coordinates of X = 1,970,880.00 and Y = 635,960.00; thence East 18,480.00 feet; thence South 9,240.00 feet to a point having Coordinates of X = 1,989,360.00 and Y = 626,720.00; thence West 18,480.00 feet; thence North 9,240.00 feet to the point of beginning, containing approximately 19 acres, as shown outlined in red on a plat on file in the Office of Mineral Resources, Department of Natural Resources. All bearings, distances and coordinates are based on Louisiana Coordinate System of 1927 (South Zone).

Applicant: A.S. Ruffin, Jr.

Bidder	Cash Payment	Price / Acre	Rental	Oil	Gas	Other



OFFICIAL COPY
OFFICE OF MINERAL RESOURCES
DEPT. OF NATURAL RESOURCES
DO NOT REMOVE