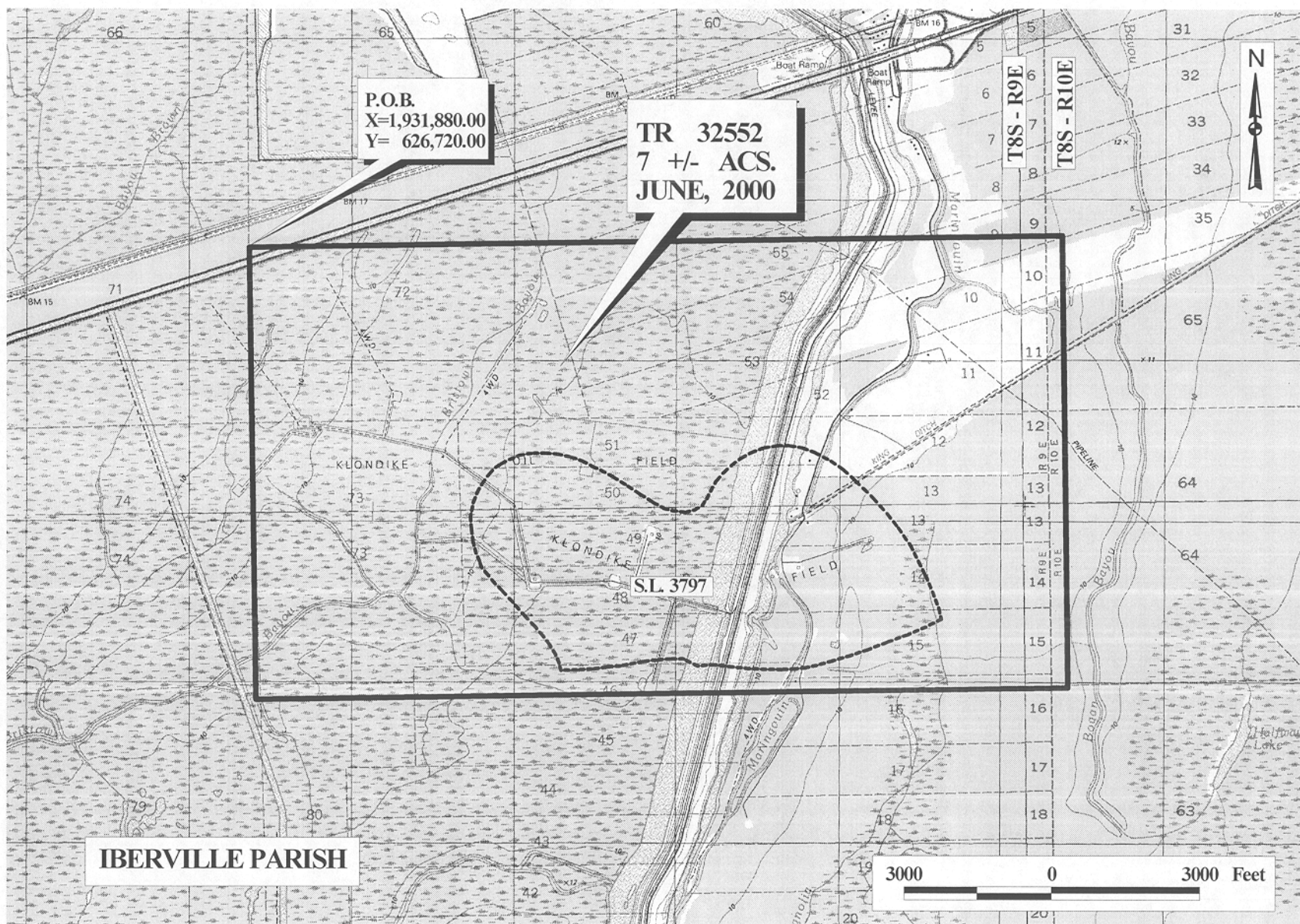


**TRACT 32552 - Iberville Parish, Louisiana**

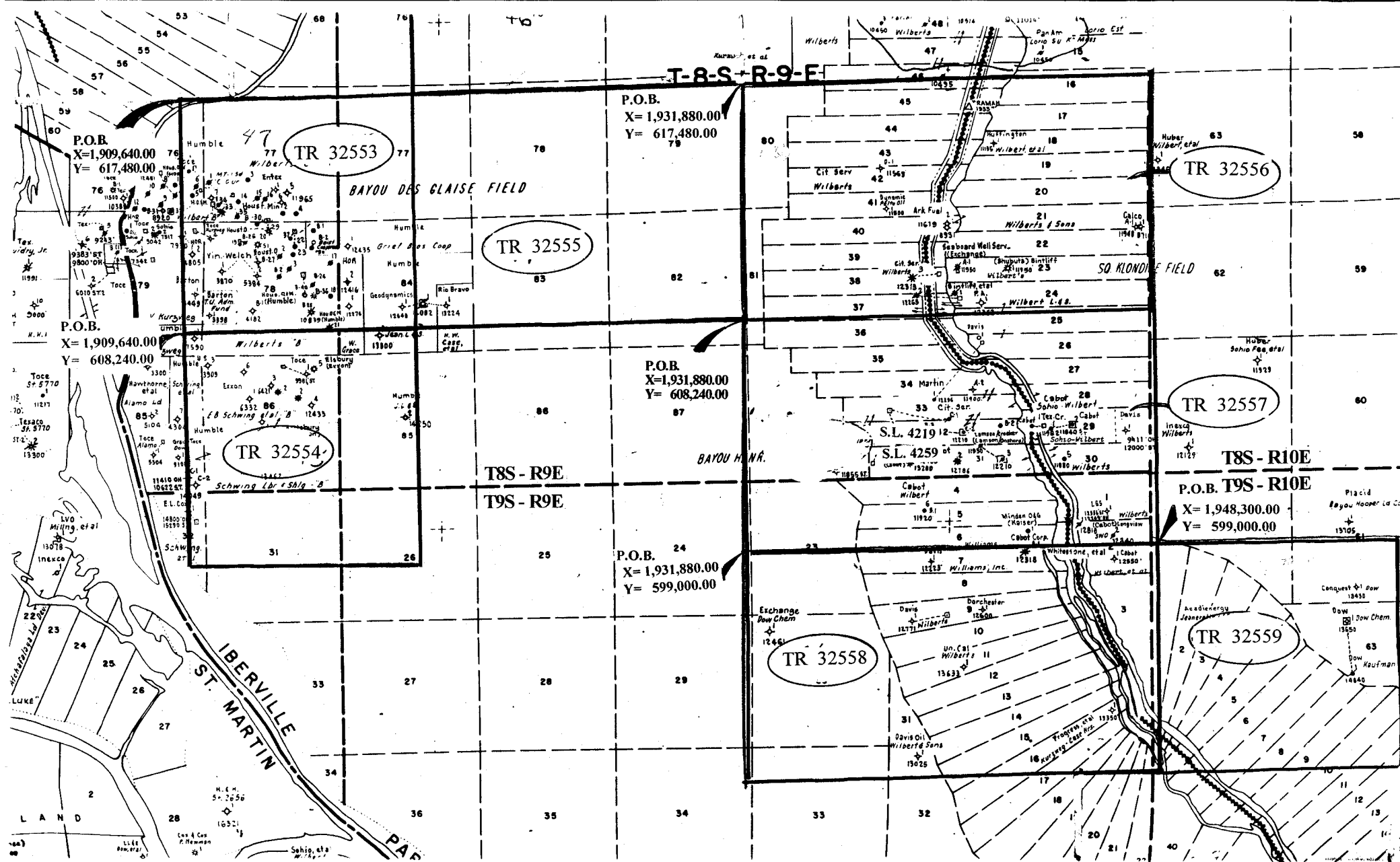
All of the lands now or formerly constituting the beds and bottoms of all water bodies of every nature and description and all islands and other lands formed by accretion or reliction, except tax lands, owned by and not under mineral lease from the State of Louisiana on June 14, 2000, situated in Iberville Parish, Louisiana, within the following described boundaries: Beginning at a point having Coordinates of X = 1,931,880.00 and Y = 626,720.00; thence East 16,420.00 feet to a point; thence South 9,240.00 feet to a point having Coordinates of X = 1,948,300.00 and Y = 617,480.00; thence West 16,420.00 feet; thence North 9,240.00 feet to the point of beginning, **LESS AND EXCEPT** State Lease No. 3797, as amended, that lies entirely within the above described tract, containing approximately 7 acres, as shown outlined in red on a plat on file in the Office of Mineral Resources, Department of Natural Resources. All bearings, distances and coordinates are based on Louisiana Coordinate System of 1927 (South Zone).

Applicant: A.S. Ruffin, Jr.

Bidder	Cash Payment	Price / Acre	Rental	Oil	Gas	Other



OFFICIAL COPY  
OFFICE OF MINERAL RESOURCES  
DEPT. OF NATURAL RESOURCES  
DO NOT REMOVE



F & A Map Services  
Division of PI

MAP NOT TO SCALE

NOT TO BE USED WITH A PORTION BID  
FOR INFORMATIONAL PURPOSES ONLY!

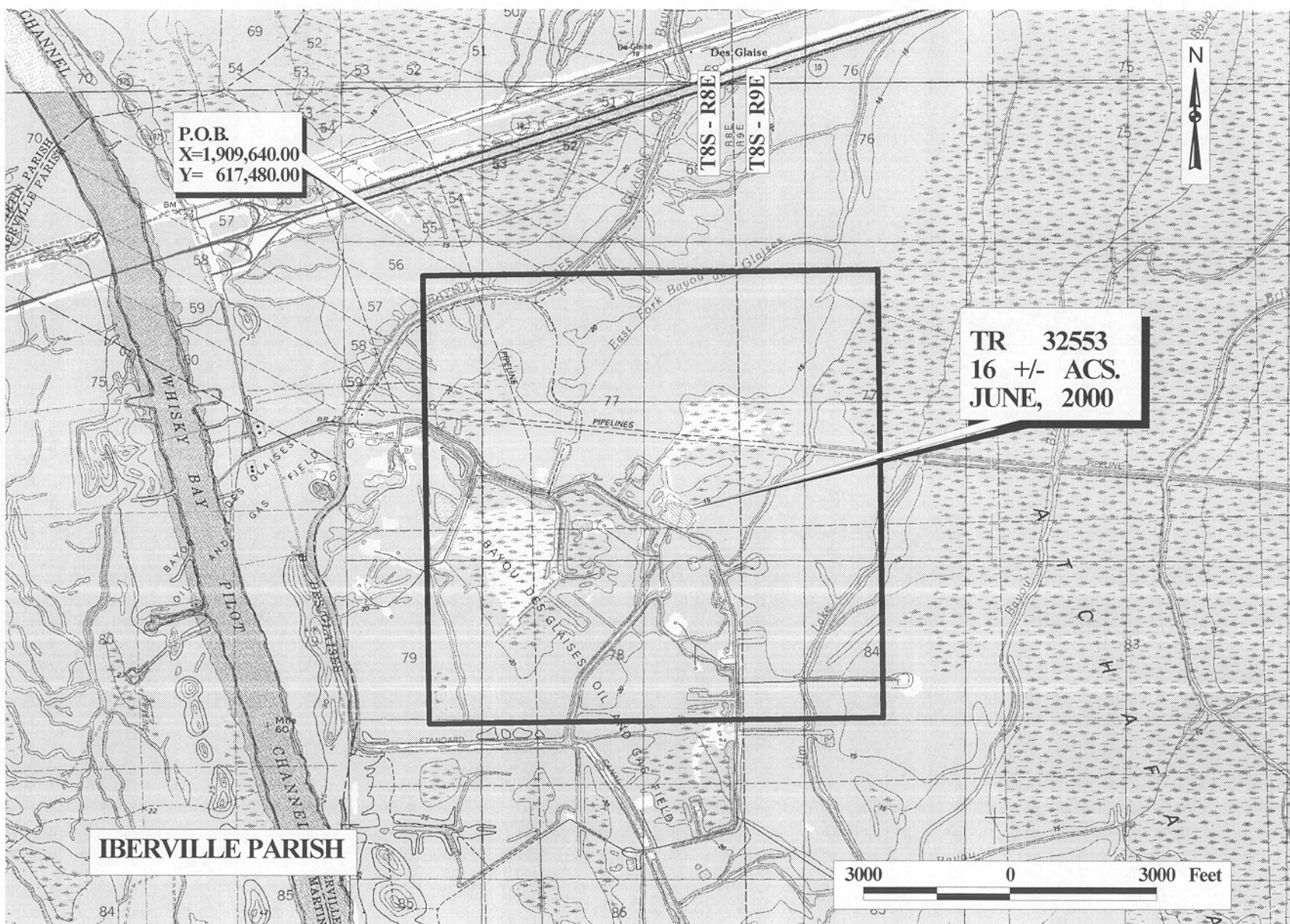
**TRACT 32553 - Iberville Parish, Louisiana**

All of the lands now or formerly constituting the beds and bottoms of all water bodies of every nature and description and all islands and other lands formed by accretion or reliction, except tax lands, owned by and not under mineral lease from the State of Louisiana on June 14, 2000, situated in Iberville Parish, Louisiana, within the following described boundaries: Beginning at a point having Coordinates of X = 1,909,640.00 and Y = 617,480.00; thence East 9,240.00 feet to a point having Coordinates of X = 1,918,880.00 and Y = 617,480.00; thence South 9,240.00 feet to a point having Coordinates of X = 1,918,880.00 and Y = 608,240.00; thence West 9,240.00 feet to a point having Coordinates of X = 1,909,640.00 and Y = 608,240.00; thence North 9,240.00 feet to the point of beginning, containing approximately 16 acres, as shown outlined in red on a plat on file in the Office of Mineral Resources, Department of Natural Resources. All bearings, distances and coordinates are based on Louisiana Coordinate System of 1927 (South Zone).

Applicant: A.S. Ruffin, Jr.

Bidder	Cash Payment	Price / Acre	Rental	Oil	Gas	Other





OFFICIAL COPY  
OFFICE OF MINERAL RESOURCES  
DEPT. OF NATURAL RESOURCES  
DO NOT REMOVE