

INLAND TRACTS

TRACT 32533 - Webster Parish, Louisiana

All of the lands now or formerly constituting the beds and bottoms of Bayou Dorcheat and all islands and other lands formed by accretion or reliction, except tax lands, owned by and not under mineral lease from the State of Louisiana on June 14, 2000, situated in Webster Parish, Louisiana, within the following described boundaries: Beginning at a point having Coordinates of X = 1,740,450.00 and Y = 674,850.00; thence North 8,000.00 feet to a point having Coordinates of X = 1,740,450.00 and Y = 682,850.00; thence East 6,000.00 feet to a point having Coordinates of X = 1,746,450.00 and Y = 682,850.00; thence South 8,000.00 feet to a point having Coordinates of X = 1,746,450.00 and Y = 674,850.00; thence West 6,000.00 feet to the point of beginning, containing approximately 25 acres, as shown outlined in red on a plat on file in the Office of Mineral Resources, Department of Natural Resources. All bearings, distances and coordinates are based on Louisiana Coordinate System of 1927 (North Zone).

Applicant: Hershel Floyd, Jr.

Bidder	Cash Payment	Price / Acre	Rental	Oil	Gas	Other

ARMY AMMUNITION PLANT

T18N - R10W

T18N - R9W



TR 32533
25 +/- ACS.
JUNE, 2000

P.O.B.
X=1,740,450.00
Y= 674,850.00

WEBSTER PARISH

3000 0 3000 Feet

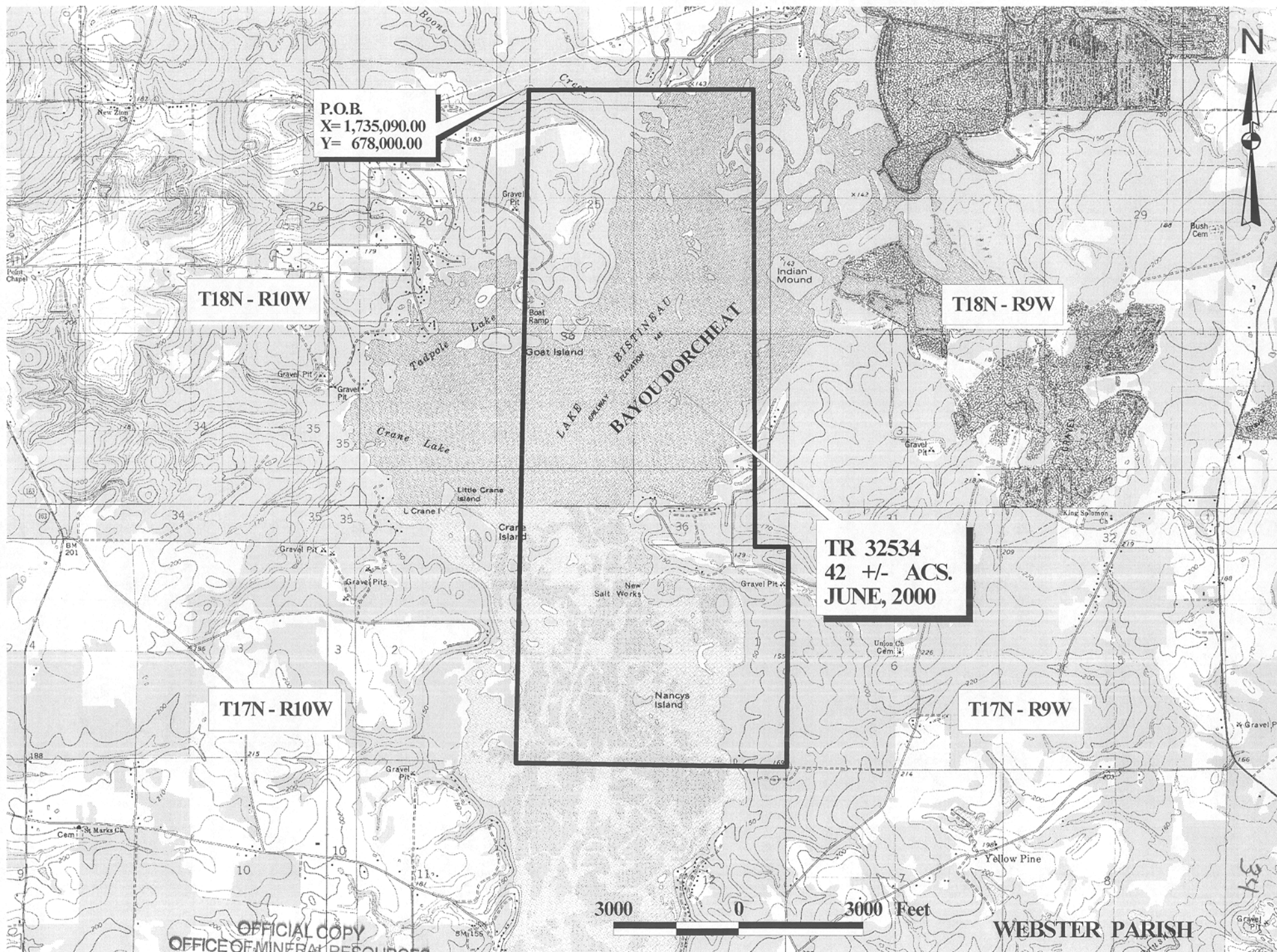
OFFICIAL COPY
OFFICE OF MINERAL RESOURCES
DEPT. OF NATURAL RESOURCES
DO NOT REMOVE

TRACT 32534 - Webster Parish, Louisiana

All of the lands now or formerly constituting the beds and bottoms of Bayou Dorcheat and all islands and other lands formed by accretion or reliction, except tax lands, owned by and not under mineral lease from the State of Louisiana on June 14, 2000, situated in Webster Parish, Louisiana, within the following described boundaries: Beginning at a point having Coordinates of X = 1,735,090.00 and Y = 678,000.00; thence East 5,360.00 feet to a point having Coordinates of X = 1,740,450.00 and Y = 678,000.00; thence South 11,090.00 feet to a point having Coordinates of X = 1,740,450.00 and Y = 666,910.00; thence East 800.00 feet to a point having Coordinates of X = 1,741,250.00 and Y = 666,910.00; thence South 00 degrees 38 minutes 42 seconds West 5,330.34 feet to a point having Coordinates of X = 1,741,190.00 and Y = 661,580.00; thence North 88 degrees 54 minutes 48 seconds West 6,485.17 feet to a point having Coordinates of X = 1,734,706.00 and Y = 661,703.00; thence North 01 degrees 20 minutes 59 seconds East 16,301.52 feet to the point of beginning, containing approximately 42 acres, as shown outlined in red on a plat on file in the Office of Mineral Resources, Department of Natural Resources. All bearings, distances and coordinates are based on Louisiana Coordinate System of 1927 (North Zone).

Applicant: Hershel Floyd, Jr.

Bidder	Cash Payment	Price / Acre	Rental	Oil	Gas	Other



P.O.B.
X= 1,735,090.00
Y= 678,000.00

T18N - R10W

T18N - R9W

TR 32534
42 +/- ACS.
JUNE, 2000

T17N - R10W

T17N - R9W

OFFICIAL COPY
OFFICE OF MINERAL RESOURCES
DEPT. OF NATURAL RESOURCES
DO NOT REMOVE

3000 0 3000 Feet

WEBSTER PARISH