

**TRACT 40842 - Bossier and Caddo Parishes, Louisiana**

All of the lands now or formerly constituting the beds and bottoms of all water bodies of every nature and description as to which title is vested in the State of Louisiana, together with all islands arising therein and other lands formed by accretion or by reliction, where allowed by law, excepting tax adjudicated lands, and not presently under mineral lease on March 11, 2009, situated in Bossier and Caddo Parishes, Louisiana, and more particularly described as follows: Beginning at the Northeast corner of State Lease No. 19927, also being a point on the South boundary of State Lease No. 19826 having Coordinates of X = 1,630,100.00 and Y = 668,906.70; thence East 14,650.00 feet along the South boundary of said State Lease No. 19826 to its Southeast corner, also being the Southwest corner of State Lease No. 19824 having Coordinates of X = 1,644,750.00 and Y = 668,906.70; thence East 978.17 feet along the South boundary of said State Lease No. 19824 to the Northwest corner of State Lease No. 19754 having Coordinates of X = 1,645,728.17 and Y = 668,906.70; thence South 16,542.03 feet along the West boundary of said State Lease No. 19754 to its Southwest corner, also being the Northwest corner of State Lease No. 19755, and the Northeast corner of State Lease No. 19349 having Coordinates of X = 1,645,728.17 and Y = 652,364.67; thence West 15,628.17 feet along the North boundary of said State Lease No. 19349 to its Northwest corner, also being the Southeast corner of said State Lease No. 19927 having Coordinates of X = 1,630,100.00 and Y = 652,364.67; thence North 16,542.03 feet along the East boundary of said State Lease No. 19927 to the point of beginning, (This tract includes only waterbottoms claimed and owned by the state and specifically excludes any land which the state may claim or own and to which the mineral rights are vested in the state), above described tract containing approximately **437 acres**, all as more particularly outlined on a plat on file in the Office of Mineral Resources, Department of Natural Resources. All bearings, distances and coordinates are based on Louisiana Coordinate System of 1927, (North or South Zone), where applicable.

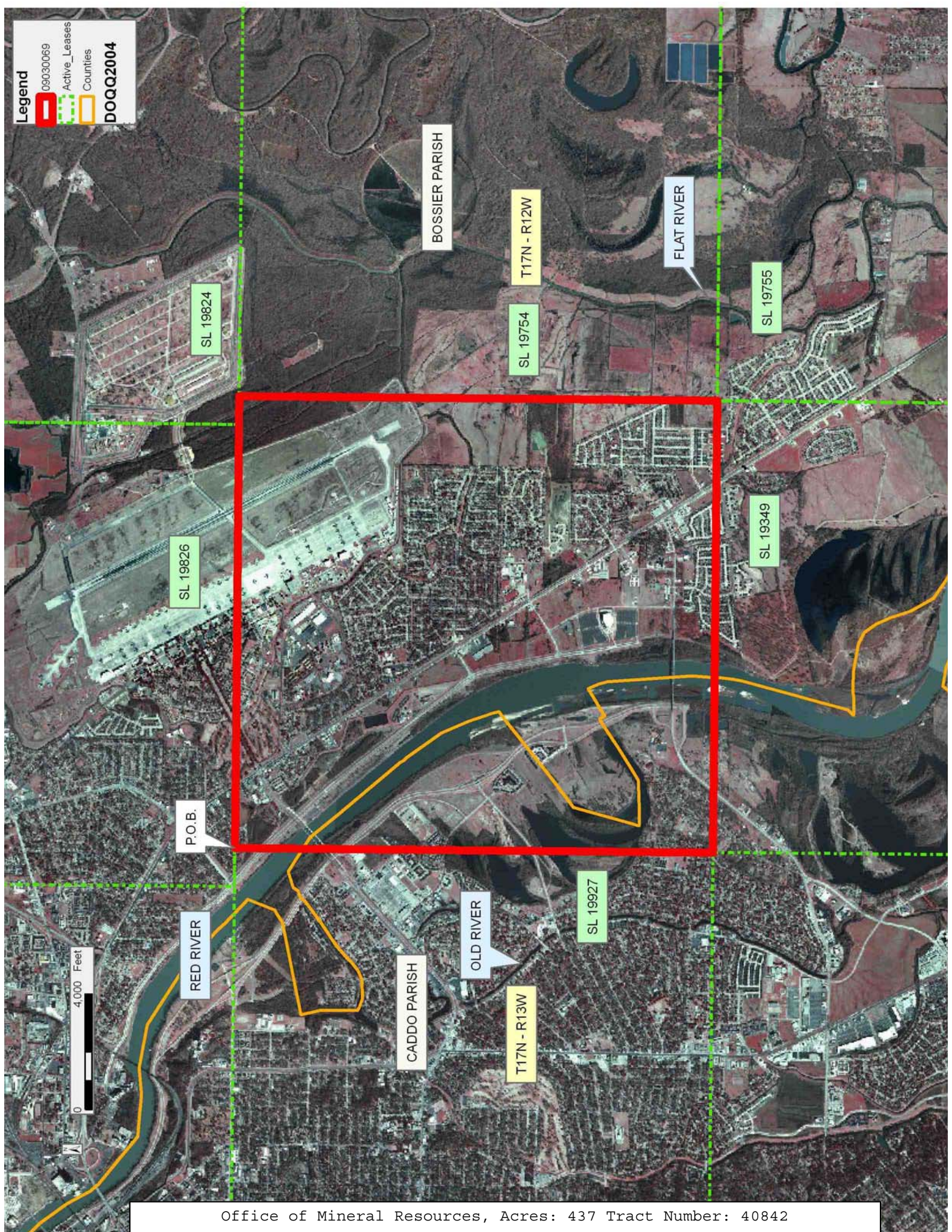
NOTE: The above description of the Tract nominated for lease has been provided and corrected, where required, exclusively by the nomination party. Any mineral lease selected from this Tract and awarded by the Louisiana State Mineral Board shall be without warranty of any kind, either express, implied, or statutory, including, but not limited to, the implied warranties of merchantability and fitness for a particular purpose. Should the mineral lease awarded by the Louisiana State Mineral Board be subsequently modified, cancelled or abrogated due to the existence of conflicting leases, operating agreements, private claims or other future obligations or conditions which may affect all or any portion of the leased Tract, it shall not relieve the Lessee of the obligation to pay any bonus due thereon to the Louisiana State Mineral Board, nor shall the Louisiana State Mineral Board be obligated to refund any consideration paid by the Lessor prior to such modification, cancellation, or abrogation, including, but not limited to, bonuses, rentals and royalties.

Applicant: THEOPHILUS OIL, GAS & LAND SERVICES, LLC

Bidder	Cash Payment	Price/Acre	Rental	Oil	Gas	Other

**Legend**

- 09030069
- Active\_Leases
- Counties
- DOQQ2004



BOSSIER PARISH

FLAT RIVER

SL 19824

T17N - R12W

SL 19755

SL 19826

SL 19754

SL 19349

P.O.B.

RED RIVER

OLD RIVER

SL 19927

CADDO PARISH

T17N - R13W



**TRACT 40843 - Caddo Parish, Louisiana**

All of the lands now or formerly constituting the beds and bottoms of all water bodies of every nature and description as to which title is vested in the State of Louisiana, together with all islands arising therein and other lands formed by accretion or by reliction, where allowed by law, excepting tax adjudicated lands, and not presently under mineral lease on March 11, 2009, situated in Caddo Parish, Louisiana, and more particularly described as follows: Beginning at the Southwest corner of State Lease No. 19927 having Coordinates of X = 1,614,260.00 and Y = 652,364.67: thence East 15,840.00 feet along the South boundary of said State Lease No. 19927 to its Southeast corner, also being the Northwest corner of State Lease No. 19349 having Coordinates of X = 1,630,100.00 and Y = 652,364.67; thence South 13,564.67 feet along the West boundary of said State Lease No. 19349 to its Southwest corner, also being the Northwest corner of State Lease No. 11155, as amended, having Coordinates of X = 1,630,100.00 and Y = 638,800.00; thence South 1,681.21 feet along the West boundary of said State Lease No. 11155 to a point having Coordinates of X = 1,630,100.00 and Y = 637,118.79; thence Westerly approximately 2,364 feet to the Northeast corner of State Lease No. 6316, as amended; thence Westerly approximately 7,504 feet along the North boundary of said State Lease No. 6316 to its Northwest corner, also being the Northernmost Northeast corner of State Lease No. 19757; thence Westerly approximately 5,975 feet along the North boundary of said State Lease No. 19757 to its Northwest corner having Coordinates of X = 1,614,260.00 and Y = 637,320.80; thence North 15,043.87 feet to the point of beginning, (This tract includes only waterbottoms claimed and owned by the state and specifically excludes any land which the state may claim or own and to which the mineral rights are vested in the state), above described tract containing approximately **69 acres**, all as more particularly outlined on a plat on file in the Office of Mineral Resources, Department of Natural Resources. All bearings, distances and coordinates are based on Louisiana Coordinate System of 1927, (North or South Zone), where applicable.

NOTE: The above description of the Tract nominated for lease has been provided and corrected, where required, exclusively by the nomination party. Any mineral lease selected from this Tract and awarded by the Louisiana State Mineral Board shall be without warranty of any kind, either express, implied, or statutory, including, but not limited to, the implied warranties of merchantability and fitness for a particular purpose. Should the mineral lease awarded by the Louisiana State Mineral Board be subsequently modified, cancelled or abrogated due to the existence of conflicting leases, operating agreements, private claims or other future obligations or conditions which may affect all or any portion of the leased Tract, it shall not relieve the Lessee of the obligation to pay any bonus due thereon to the Louisiana State Mineral Board, nor shall the Louisiana State Mineral Board be obligated to refund any consideration paid by the Lessor prior to such modification, cancellation, or abrogation, including, but not limited to, bonuses, rentals and royalties.

Applicant: THEOPHILUS OIL, GAS & LAND SERVICES, LLC

Bidder	Cash Payment	Price/Acre	Rental	Oil	Gas	Other

**Legend**  
09030070  
Active\_Leases  
DOQQ2004



**TRACT 40844 - Cameron Parish, Louisiana**

All of the lands now or formerly constituting the beds and bottoms of all water bodies of every nature and description as to which title is vested in the State of Louisiana, together with all islands arising therein and other lands formed by accretion or by reliction, where allowed by law, excepting tax adjudicated lands, and not presently under mineral lease on March 11, 2009, situated in Cameron Parish, Louisiana, and more particularly described as follows: Beginning at a point having Coordinates of X = 1,541,587.67 and Y = 488,390.02; thence East 18,480.00 feet to a point having Coordinates of X = 1,560,067.67 and Y = 488,390.02; thence South 18,480.00 feet to a point having Coordinates of X = 1,560,067.67 and Y = 469,910.02; thence West 18,480.00 feet to a point having Coordinates of X = 1,541,587.67 and Y = 469,910.02; thence North 10,917.85 feet to a point on the South boundary of State Lease No. 18645 having Coordinates of X = 1,541,587.67 and Y = 480,827.87; thence along the boundary of said State Lease No. 18645 the following courses: East 1,461.85 feet to a point having Coordinates of X = 1,543,049.52 and Y = 480,827.87 and North 4,030.40 feet to its Northeast corner and a point on the South boundary of State Lease No. 18646 having Coordinates of X = 1,543,049.52 and Y = 484,858.27; thence East 4,007.74 feet along the South boundary of said State Lease No. 18646 to its Southeast corner and a point on the West boundary of State Lease No. 18887 having Coordinates of X = 1,547,057.26 and Y = 484,858.27; thence along the boundary of said State Lease No. 18887 the following courses: South 159.11 feet to a point having Coordinates of X = 1,547,057.26 and Y = 484,699.16, East 1,232.32 feet to a point having Coordinates of X = 1,548,289.58 and Y = 484,699.16, North 2,661.02 feet to a point having Coordinates of X = 1,548,289.58 and Y = 487,360.18, West 1,232.32 feet to a point having Coordinates of X = 1,547,057.26 and Y = 487,360.18 and South 350.18 feet to a point on its West boundary and the Northeast corner of said State Lease No. 18646 having Coordinates of X = 1,547,057.26 and Y = 487,010.00; thence along the boundary of said State Lease No. 18646 the following courses: West 1,192.26 feet to a point having Coordinates of X = 1,548,865.00 and Y = 487,010.00, North 245.09 feet to a point having Coordinates of X = 1,545,865.00 and Y = 487,255.09, West 3,977.87 feet to a point having Coordinates of X = 1,541,887.13 and Y = 487,255.09 and South 2,396.82 feet its Southwest corner and a point on the North boundary of said State Lease No. 18645 having Coordinates of X = 1,541,887.13 and Y = 484,858.27; thence West 299.46 feet along the North boundary of said State Lease No. 18645 to a point having Coordinates of X = 1,541,587.67 and Y = 484,858.27; thence North 3,531.75 feet to the point of beginning containing approximately **1,153 acres**, all as more particularly outlined on a plat on file in the Office of Mineral Resources, Department of Natural Resources. All bearings, distances and coordinates are based on Louisiana Coordinate System of 1927, (North or South Zone), where applicable.

NOTE: The above description of the Tract nominated for lease has been provided and corrected, where required, exclusively by the nomination party. Any mineral lease selected from this Tract and awarded by the

Louisiana State Mineral Board shall be without warranty of any kind, either express, implied, or statutory, including, but not limited to, the implied warranties of merchantability and fitness for a particular purpose. Should the mineral lease awarded by the Louisiana State Mineral Board be subsequently modified, cancelled or abrogated due to the existence of conflicting leases, operating agreements, private claims or other future obligations or conditions which may affect all or any portion of the leased Tract, it shall not relieve the Lessee of the obligation to pay any bonus due thereon to the Louisiana State Mineral Board, nor shall the Louisiana State Mineral Board be obligated to refund any consideration paid by the Lessor prior to such modification, cancellation, or abrogation, including, but not limited to, bonuses, rentals and royalties.

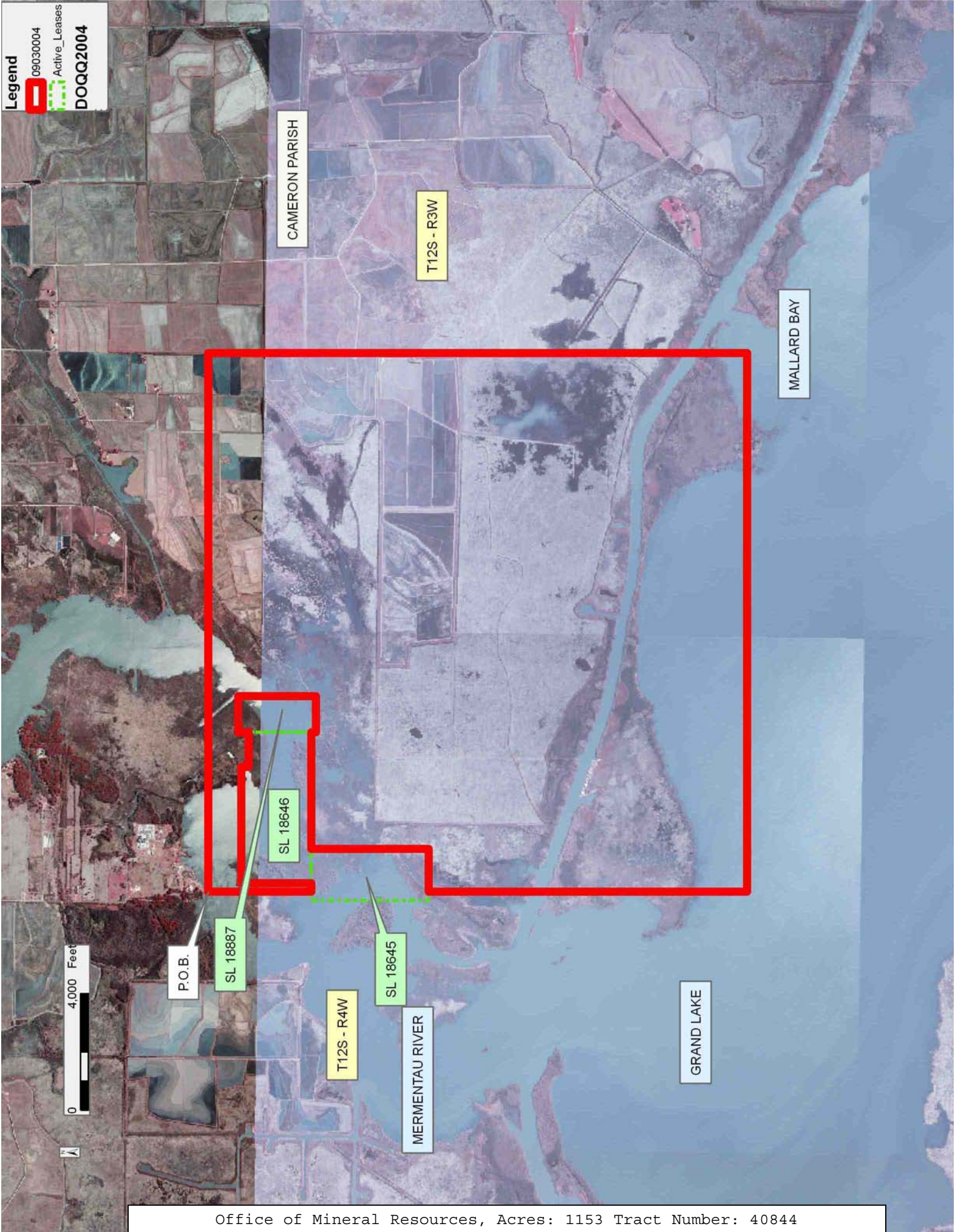
NOTE: The State of Louisiana does hereby reserve, and this lease shall be subject to, the imprescriptible right of surface use in the nature of a servitude in favor of the Department of Natural Resources, including its Offices and Commissions, for the sole purpose of implementing, constructing, servicing and maintaining approved coastal zone management and/or restoration projects. Utilization of any and all rights derived under this lease by the mineral lessee, its agents, successors or assigns, shall not interfere with nor hinder the reasonable surface use by the Department of Natural Resources, its Offices or Commissions, as herein above reserved.

Applicant: LESLIE M COOPER

Bidder	Cash Payment	Price/Acre	Rental	Oil	Gas	Other



**Legend**  
09030004  
Active\_Leases  
DOQQ2004



**TRACT 40845 - Cameron Parish, Louisiana**

All of the lands now or formerly constituting the beds and bottoms of all water bodies of every nature and description as to which title is vested in the State of Louisiana, together with all islands arising therein and other lands formed by accretion or by reliction, where allowed by law, excepting tax adjudicated lands, and not presently under mineral lease on March 11, 2009, situated in Cameron Parish, Louisiana, and more particularly described as follows: Beginning at a point having Coordinates of X = 1,219,339.00 and Y = 480,413.00; thence South 10,113.00 feet to a point having Coordinates of X = 1,219,339.00 and Y = 470,300.00; thence West 4,734.00 feet to a point on the Texas-Louisiana Boundary having Coordinates of X = 1,214,605.00 and Y = 470,300.00; thence along the said Texas-Louisiana Boundary the following courses: North 25 degrees 46 minutes 49 seconds East 816.24 feet to a point having Coordinates of X = 1,214,960.00 and Y = 471,035.00; thence North 48 degrees 11 minutes 45 seconds East 697.59 feet to a point having Coordinates of X = 1,215,480.00 and Y = 471,500.00; thence North 13 degrees 32 minutes 16 seconds East 2,648.59 feet to a point having Coordinates of X = 1,216,100.00 and Y = 474,075.00; and North 08 degrees 18 minutes 12 seconds East 6,405.14 feet to a point having Coordinates of X = 1,217,024.98 and Y = 480,413.00; thence East 2,314.02 feet to the point of beginning, containing approximately **734.63 acres, LESS AND EXCEPT** that portion thereof, if any, located West of the boundary line between the States of Texas and Louisiana as determined by the report of the Special Master and adjudicated by the Supreme Court of the United States in litigation styled **Texas v. Louisiana, et al No. 36 Original**, or as otherwise approved by said court, all as more particularly outlined on a plat on file in the Office of Mineral Resources, Department of Natural Resources. All bearings, distances and coordinates are based on Louisiana Coordinate System of 1927, (North or South Zone), where applicable.

NOTE: The above description of the Tract nominated for lease has been provided and corrected, where required, exclusively by the nomination party. Any mineral lease selected from this Tract and awarded by the Louisiana State Mineral Board shall be without warranty of any kind, either express, implied, or statutory, including, but not limited to, the implied warranties of merchantability and fitness for a particular purpose. Should the mineral lease awarded by the Louisiana State Mineral Board be subsequently modified, cancelled or abrogated due to the existence of conflicting leases, operating agreements, private claims or other future obligations or conditions which may affect all or any portion of the leased Tract, it shall not relieve the Lessee of the obligation to pay any bonus due thereon to the Louisiana State Mineral Board, nor shall the Louisiana State Mineral Board be obligated to refund any consideration paid by the Lessor prior to such modification, cancellation, or abrogation, including, but not limited to, bonuses, rentals and royalties.

NOTE: The State of Louisiana does hereby reserve, and this lease shall be subject to, the imprescriptible right of surface use in the nature of a

servitude in favor of the Department of Natural Resources, including its Offices and Commissions, for the sole purpose of implementing, constructing, servicing and maintaining approved coastal zone management and/or restoration projects. Utilization of any and all rights derived under this lease by the mineral lessee, its agents, successors or assigns, shall not interfere with nor hinder the reasonable surface use by the Department of Natural Resources, its Offices or Commissions, as herein above reserved.

NOTE: The Department of Wildlife and Fisheries has designated certain areas in the coastal waters of the State of Louisiana as Oyster Seed Bed Areas. The exact location of those Seed Bed Areas must be obtained from the Department of Wildlife and Fisheries and any work done under a mineral lease from the State of Louisiana may necessarily be conducted in conformity with the rules and regulations promulgated by the said Department of Wildlife and Fisheries for Oyster Seed Bed Areas.

Applicant: MINERAL SERVICES, INC.

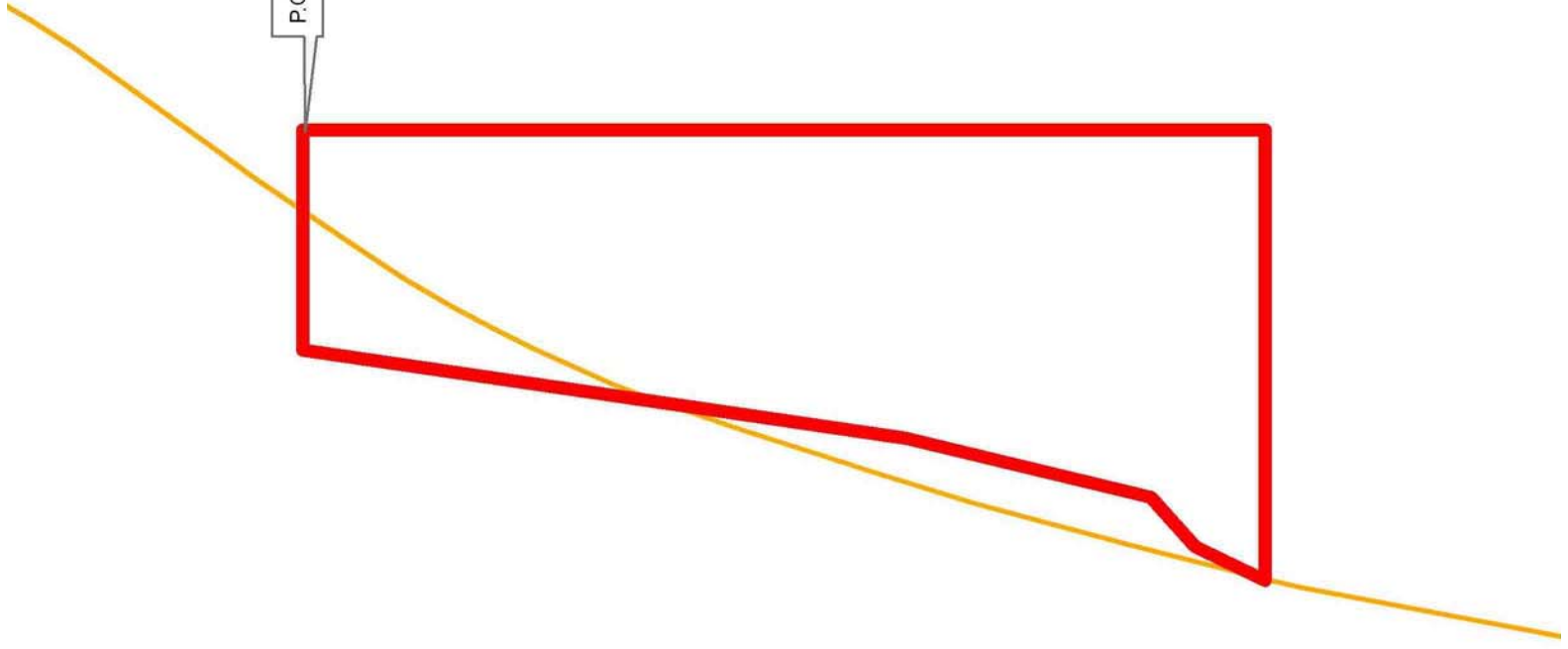
Bidder	Cash Payment	Price/Acre	Rental	Oil	Gas	Other

**Legend**  
09030078  
Counties

CAMERON PARISH

SABINE LAKE

P.O.B.



**TRACT 40846 - Cameron Parish, Louisiana**

All of the lands now or formerly constituting the beds and bottoms of all water bodies of every nature and description as to which title is vested in the State of Louisiana, together with all islands arising therein and other lands formed by accretion or by reliction, where allowed by law, excepting tax adjudicated lands, and not presently under mineral lease on March 11, 2009, situated in Cameron Parish, Louisiana, and more particularly described as follows: Beginning at a point having Coordinates of X = 1,219,339.00 and Y = 480,413.00; thence East 5,622.00 feet to a point having Coordinates of X = 1,224,961.00 and Y = 480,413.00; thence South 4,360.00 feet to a point having Coordinates of X = 1,224,961.00 and Y = 476,053.00; thence West 5,622.00 feet to a point having Coordinates of X = 1,219,339.00 and Y = 476,053.00; thence North 4,360.00 feet to the point of beginning, containing approximately **562.72 acres**, all as more particularly outlined on a plat on file in the Office of Mineral Resources, Department of Natural Resources. All bearings, distances and coordinates are based on Louisiana Coordinate System of 1927, (North or South Zone), where applicable.

NOTE: The above description of the Tract nominated for lease has been provided and corrected, where required, exclusively by the nomination party. Any mineral lease selected from this Tract and awarded by the Louisiana State Mineral Board shall be without warranty of any kind, either express, implied, or statutory, including, but not limited to, the implied warranties of merchantability and fitness for a particular purpose. Should the mineral lease awarded by the Louisiana State Mineral Board be subsequently modified, cancelled or abrogated due to the existence of conflicting leases, operating agreements, private claims or other future obligations or conditions which may affect all or any portion of the leased Tract, it shall not relieve the Lessee of the obligation to pay any bonus due thereon to the Louisiana State Mineral Board, nor shall the Louisiana State Mineral Board be obligated to refund any consideration paid by the Lessor prior to such modification, cancellation, or abrogation, including, but not limited to, bonuses, rentals and royalties.

NOTE: The State of Louisiana does hereby reserve, and this lease shall be subject to, the imprescriptible right of surface use in the nature of a servitude in favor of the Department of Natural Resources, including its Offices and Commissions, for the sole purpose of implementing, constructing, servicing and maintaining approved coastal zone management and/or restoration projects. Utilization of any and all rights derived under this lease by the mineral lessee, its agents, successors or assigns, shall not interfere with nor hinder the reasonable surface use by the Department of Natural Resources, its Offices or Commissions, as herein above reserved.

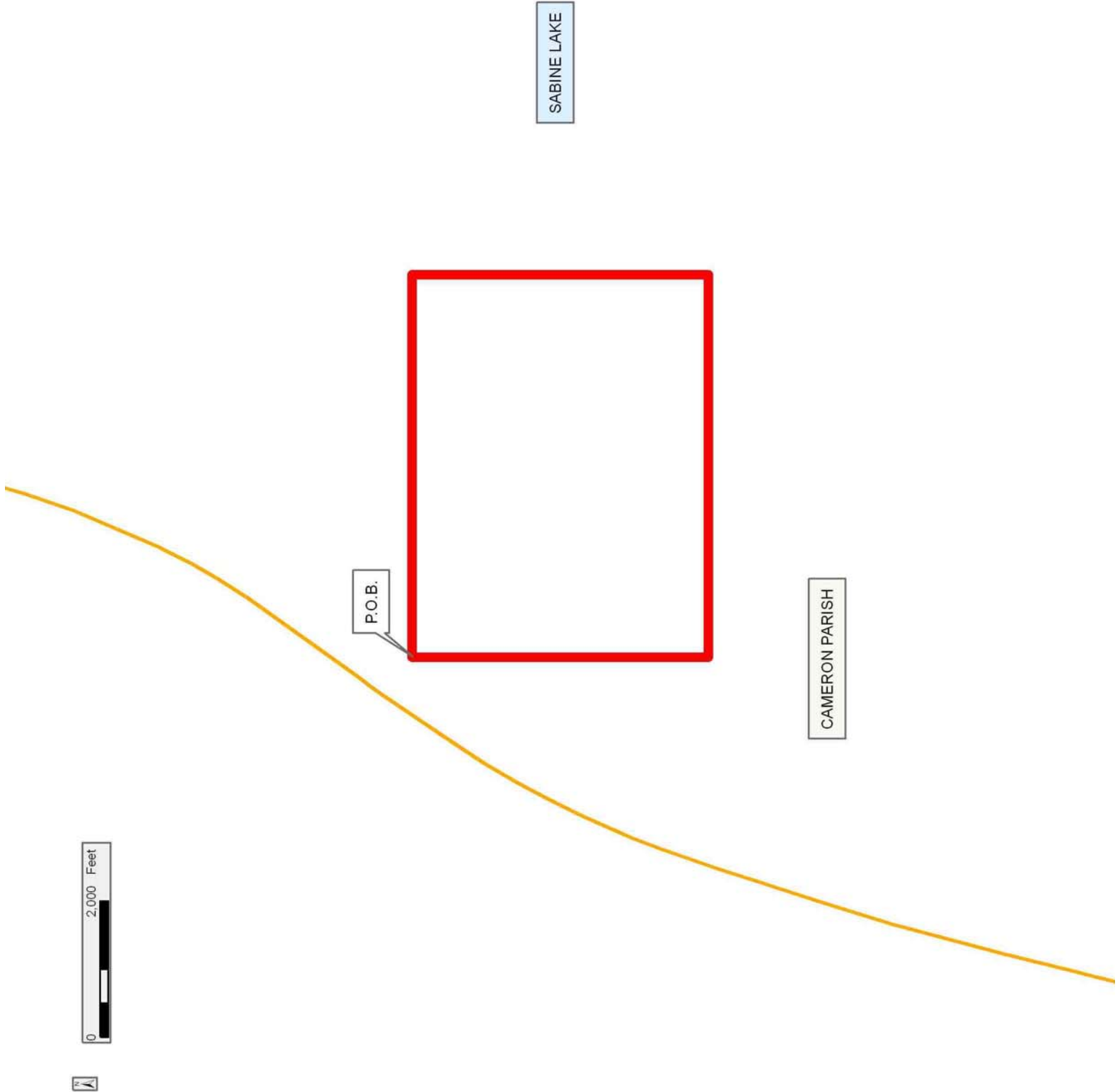
NOTE: The Department of Wildlife and Fisheries has designated certain areas in the coastal waters of the State of Louisiana as Oyster Seed Bed Areas. The exact location of those Seed Bed Areas must be obtained from

the Department of Wildlife and Fisheries and any work done under a mineral lease from the State of Louisiana may necessarily be conducted in conformity with the rules and regulations promulgated by the said Department of Wildlife and Fisheries for Oyster Seed Bed Areas.

Applicant: MINERAL SERVICES, INC.

Bidder	Cash Payment	Price/Acre	Rental	Oil	Gas	Other

**Legend**  
09030076  
Counties



**TRACT 40847 - Cameron Parish, Louisiana**

All of the lands now or formerly constituting the beds and bottoms of all water bodies of every nature and description as to which title is vested in the State of Louisiana, together with all islands arising therein and other lands formed by accretion or by reliction, where allowed by law, excepting tax adjudicated lands, and not presently under mineral lease on March 11, 2009, situated in Cameron Parish, Louisiana, and more particularly described as follows: Beginning at a point having Coordinates of X = 1,219,339.00 and Y = 476,053.00; thence East 5,622.00 feet to a point having Coordinates of X = 1,224,961.00 and Y = 476,053.00; thence South 5,753.00 feet to a point having Coordinates of X = 1,224,961.00 and Y = 470,300.00; thence West 5,622.00 feet to a point having Coordinates of X = 1,219,339.00 and Y = 470,300.00; thence North 5,753.00 feet to the point of beginning, containing approximately **742.50 acres**, all as more particularly outlined on a plat on file in the Office of Mineral Resources, Department of Natural Resources. All bearings, distances and coordinates are based on Louisiana Coordinate System of 1927, (North or South Zone), where applicable.

NOTE: The above description of the Tract nominated for lease has been provided and corrected, where required, exclusively by the nomination party. Any mineral lease selected from this Tract and awarded by the Louisiana State Mineral Board shall be without warranty of any kind, either express, implied, or statutory, including, but not limited to, the implied warranties of merchantability and fitness for a particular purpose. Should the mineral lease awarded by the Louisiana State Mineral Board be subsequently modified, cancelled or abrogated due to the existence of conflicting leases, operating agreements, private claims or other future obligations or conditions which may affect all or any portion of the leased Tract, it shall not relieve the Lessee of the obligation to pay any bonus due thereon to the Louisiana State Mineral Board, nor shall the Louisiana State Mineral Board be obligated to refund any consideration paid by the Lessor prior to such modification, cancellation, or abrogation, including, but not limited to, bonuses, rentals and royalties.

NOTE: The State of Louisiana does hereby reserve, and this lease shall be subject to, the imprescriptible right of surface use in the nature of a servitude in favor of the Department of Natural Resources, including its Offices and Commissions, for the sole purpose of implementing, constructing, servicing and maintaining approved coastal zone management and/or restoration projects. Utilization of any and all rights derived under this lease by the mineral lessee, its agents, successors or assigns, shall not interfere with nor hinder the reasonable surface use by the Department of Natural Resources, its Offices or Commissions, as herein above reserved.

NOTE: The Department of Wildlife and Fisheries has designated certain areas in the coastal waters of the State of Louisiana as Oyster Seed Bed Areas. The exact location of those Seed Bed Areas must be obtained from



the Department of Wildlife and Fisheries and any work done under a mineral lease from the State of Louisiana may necessarily be conducted in conformity with the rules and regulations promulgated by the said Department of Wildlife and Fisheries for Oyster Seed Bed Areas.

Applicant: MINERAL SERVICES, INC.

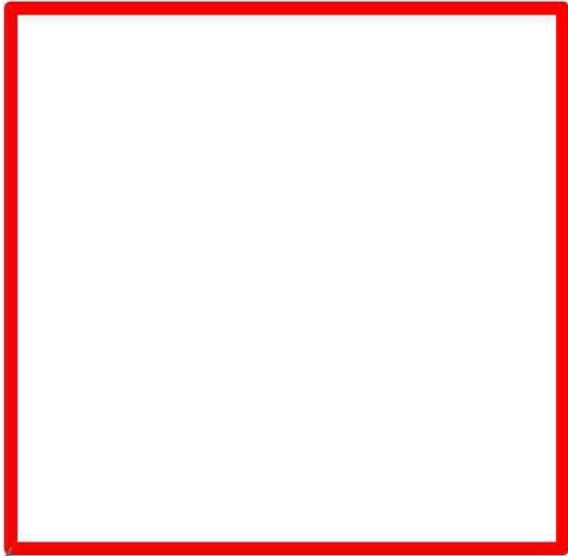
Bidder	Cash Payment	Price/Acre	Rental	Oil	Gas	Other

**Legend**  
09030077  
Counties

SABINE LAKE

CAMERON PARISH

P.O.B.



**TRACT 40848 - Portion of Block 35, Breton Sound Area, Plaquemines Parish, Louisiana**

All of the lands now or formerly constituting the beds and bottoms of all water bodies of every nature and description as to which title is vested in the State of Louisiana, together with all islands arising therein and other lands formed by accretion or by reliction, where allowed by law, excepting tax adjudicated lands, and not presently under mineral lease on March 11, 2009, situated in Plaquemines Parish, Louisiana, and more particularly described as follows: Beginning at a point on the West line of Block 35, Breton Sound Area, having Coordinates of X = 2,664,850.00 and Y = 312,455.00; thence East 3,999.40 feet to the Southernmost Southeast corner of State Lease No. 14561 having Coordinates of X = 2,668,849.40 and Y = 312,455.00; thence South 39 degrees 22 minutes 25 seconds East 6,306.38 feet to a point on the South line of said Block 35 having Coordinates of X = 2,672,850.00 and Y = 307,580.00; thence West 8,000.00 feet along the South line of said Block 35 to its Southwest corner having Coordinates of X = 2,664,850.00 and Y = 307,580.00; thence North 4,875.00 feet along the West line of said Block 35 to the point of beginning, containing approximately **671.45 acres**, all as more particularly outlined on a plat on file in the Office of Mineral Resources, Department of Natural Resources. All bearings, distances and coordinates are based on Louisiana Coordinate System of 1927, (North or South Zone), where applicable.

NOTE: The above description of the Tract nominated for lease has been provided and corrected, where required, exclusively by the nomination party. Any mineral lease selected from this Tract and awarded by the Louisiana State Mineral Board shall be without warranty of any kind, either express, implied, or statutory, including, but not limited to, the implied warranties of merchantability and fitness for a particular purpose. Should the mineral lease awarded by the Louisiana State Mineral Board be subsequently modified, cancelled or abrogated due to the existence of conflicting leases, operating agreements, private claims or other future obligations or conditions which may affect all or any portion of the leased Tract, it shall not relieve the Lessee of the obligation to pay any bonus due thereon to the Louisiana State Mineral Board, nor shall the Louisiana State Mineral Board be obligated to refund any consideration paid by the Lessor prior to such modification, cancellation, or abrogation, including, but not limited to, bonuses, rentals and royalties.




NOTE: The State of Louisiana does hereby reserve, and this lease shall be subject to, the imprescriptible right of surface use in the nature of a servitude in favor of the Department of Natural Resources, including its Offices and Commissions, for the sole purpose of implementing, constructing, servicing and maintaining approved coastal zone management and/or restoration projects. Utilization of any and all rights derived under this lease by the mineral lessee, its agents, successors or assigns, shall not interfere with nor hinder the reasonable surface use by the

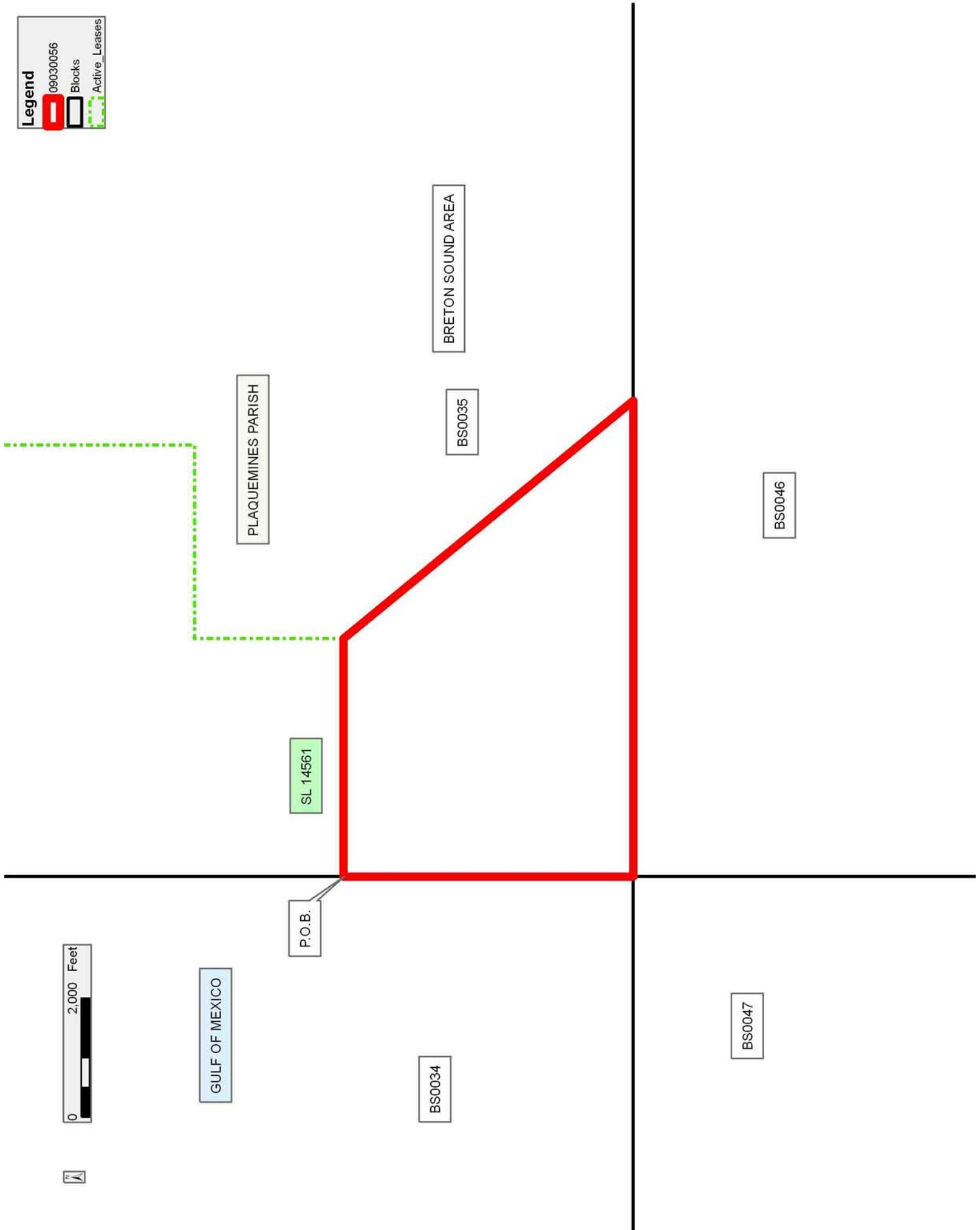
Department of Natural Resources, its Offices or Commissions, as herein above reserved.

Applicant: HAROLD J. ANDERSON, INC.

Bidder	Cash Payment	Price/Acre	Rental	Oil	Gas	Other

**Legend**

-  09030056
-  Blocks
-  Active\_Leases



**TRACT 40849 - Portion of Block 46, Breton Sound Area, Plaquemines Parish, Louisiana**

All of the lands now or formerly constituting the beds and bottoms of all water bodies of every nature and description as to which title is vested in the State of Louisiana, together with all islands arising therein and other lands formed by accretion or by reliction, where allowed by law, excepting tax adjudicated lands, and not presently under mineral lease on March 11, 2009, situated in Plaquemines Parish, Louisiana, and more particularly described as follows: Beginning at the Northwest corner of Block 46, Breton Sound Area, having Coordinates of X = 2,664,850.00 and Y = 307,580.00; thence East 7,375.00 feet along the North line of said Block 46 to a point having Coordinates of X = 2,672,225.00 and Y = 307,580.00; thence South 14,750.00 feet to a point on the South line of said Block 46 having Coordinates of X = 2,672,225.00 and Y = 292,830.00; thence West 7,375.00 feet along the South line of said Block 46 to its Southwest corner having Coordinates of X = 2,664,850.00 and Y = 292,830.00; thence North 14,750.00 feet along the West line of said Block 46 to the point of beginning, containing approximately **2,497.27 acres**, all as more particularly outlined on a plat on file in the Office of Mineral Resources, Department of Natural Resources. All bearings, distances and coordinates are based on Louisiana Coordinate System of 1927, (North or South Zone), where applicable.

NOTE: The above description of the Tract nominated for lease has been provided and corrected, where required, exclusively by the nomination party. Any mineral lease selected from this Tract and awarded by the Louisiana State Mineral Board shall be without warranty of any kind, either express, implied, or statutory, including, but not limited to, the implied warranties of merchantability and fitness for a particular purpose. Should the mineral lease awarded by the Louisiana State Mineral Board be subsequently modified, cancelled or abrogated due to the existence of conflicting leases, operating agreements, private claims or other future obligations or conditions which may affect all or any portion of the leased Tract, it shall not relieve the Lessee of the obligation to pay any bonus due thereon to the Louisiana State Mineral Board, nor shall the Louisiana State Mineral Board be obligated to refund any consideration paid by the Lessor prior to such modification, cancellation, or abrogation, including, but not limited to, bonuses, rentals and royalties.

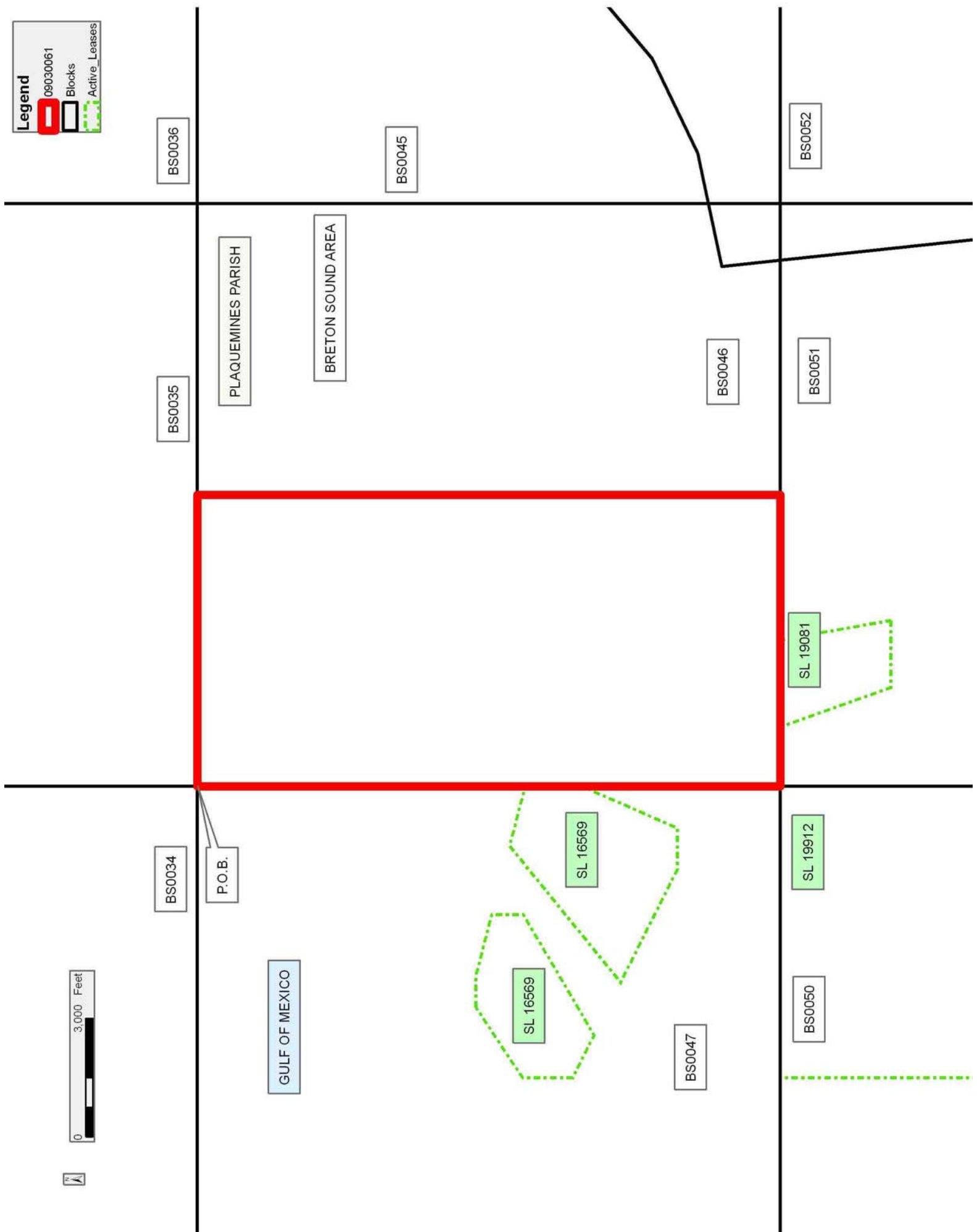
NOTE: The State of Louisiana does hereby reserve, and this lease shall be subject to, the imprescriptible right of surface use in the nature of a servitude in favor of the Department of Natural Resources, including its Offices and Commissions, for the sole purpose of implementing, constructing, servicing and maintaining approved coastal zone management and/or restoration projects. Utilization of any and all rights derived under this lease by the mineral lessee, its agents, successors or assigns, shall not interfere with nor hinder the reasonable surface use by the Department of Natural Resources, its Offices or Commissions, as herein above reserved.

Applicant: HAROLD J. ANDERSON, INC.

Bidder	Cash Payment	Price/Acre	Rental	Oil	Gas	Other

**Legend**

-  09030061
-  Blocks
-  Active\_Leases





**TRACT 40850 - Portion of Block 46, Breton Sound Area, Plaquemines Parish, Louisiana**

All of the lands now or formerly constituting the beds and bottoms of all water bodies of every nature and description as to which title is vested in the State of Louisiana, together with all islands arising therein and other lands formed by accretion or by reliction, where allowed by law, excepting tax adjudicated lands, and not presently under mineral lease on March 11, 2009, situated in Plaquemines Parish, Louisiana, and more particularly described as follows: Beginning at a point on the North line of Block 46, Breton Sound Area, having Coordinates of X = 2,672,225.00 and Y = 307,580.00; thence East 7,375.00 feet along the North line of said Block 46 to its Northeast corner having Coordinates of X = 2,679,600.00 and Y = 307,580.00; thence South 6,350.00 feet along the East line of said Block 46 to the Easternmost corner of State Lease No. 19948 having Coordinates of X = 2,679,600.00 and Y = 301,230.00; thence along the boundary of said State Lease No. 19948 the following courses: West 1,850.00 feet and South 43 degrees 03 minutes 41 seconds West 2,508.55 feet to the Northernmost corner of State Lease No. 19079 having Coordinates of X = 2,676,037.21 and Y = 299,397.20; thence along the boundary of said State Lease No. 19079 the following courses: South 23 degrees 05 minutes 31 seconds West 2,899.52 feet and South 52 degrees 01 minutes 23 seconds East 3,944.14 feet to its Southernmost corner, also being a point on the Louisiana Coastline, as decreed by the Supreme Court of the United States, as determined by a Special Master appointed therein, in litigation styled *United States v. State of Louisiana et al No. 9 Original*, in 1975, having Coordinates of X = 2,678,009.00 and Y = 294,303.00; thence Southeasterly, on a straight line, along said Louisiana Coastline to a point on the South line of said Block 46 having Coordinates of X = 2,678,166.42 and Y = 292,830.00; thence West 5,941.42 feet along the South line of said Block 46 to a point having Coordinates of X = 2,672,225.00 and Y = 292,830.00; thence North 14,750.00 feet to the point of beginning, containing approximately **1,904.04 acres**, all as more particularly outlined on a plat on file in the Office of Mineral Resources, Department of Natural Resources. All bearings, distances and coordinates are based on Louisiana Coordinate System of 1927, (North or South Zone), where applicable.

NOTE: The above description of the Tract nominated for lease has been provided and corrected, where required, exclusively by the nomination party. Any mineral lease selected from this Tract and awarded by the Louisiana State Mineral Board shall be without warranty of any kind, either express, implied, or statutory, including, but not limited to, the implied warranties of merchantability and fitness for a particular purpose. Should the mineral lease awarded by the Louisiana State Mineral Board be subsequently modified, cancelled or abrogated due to the existence of conflicting leases, operating agreements, private claims or other future obligations or conditions which may affect all or any portion of the leased Tract, it shall not relieve the Lessee of the obligation to pay any bonus due thereon to the Louisiana State Mineral Board, nor shall

the Louisiana State Mineral Board be obligated to refund any consideration paid by the Lessor prior to such modification, cancellation, or abrogation, including, but not limited to, bonuses, rentals and royalties.

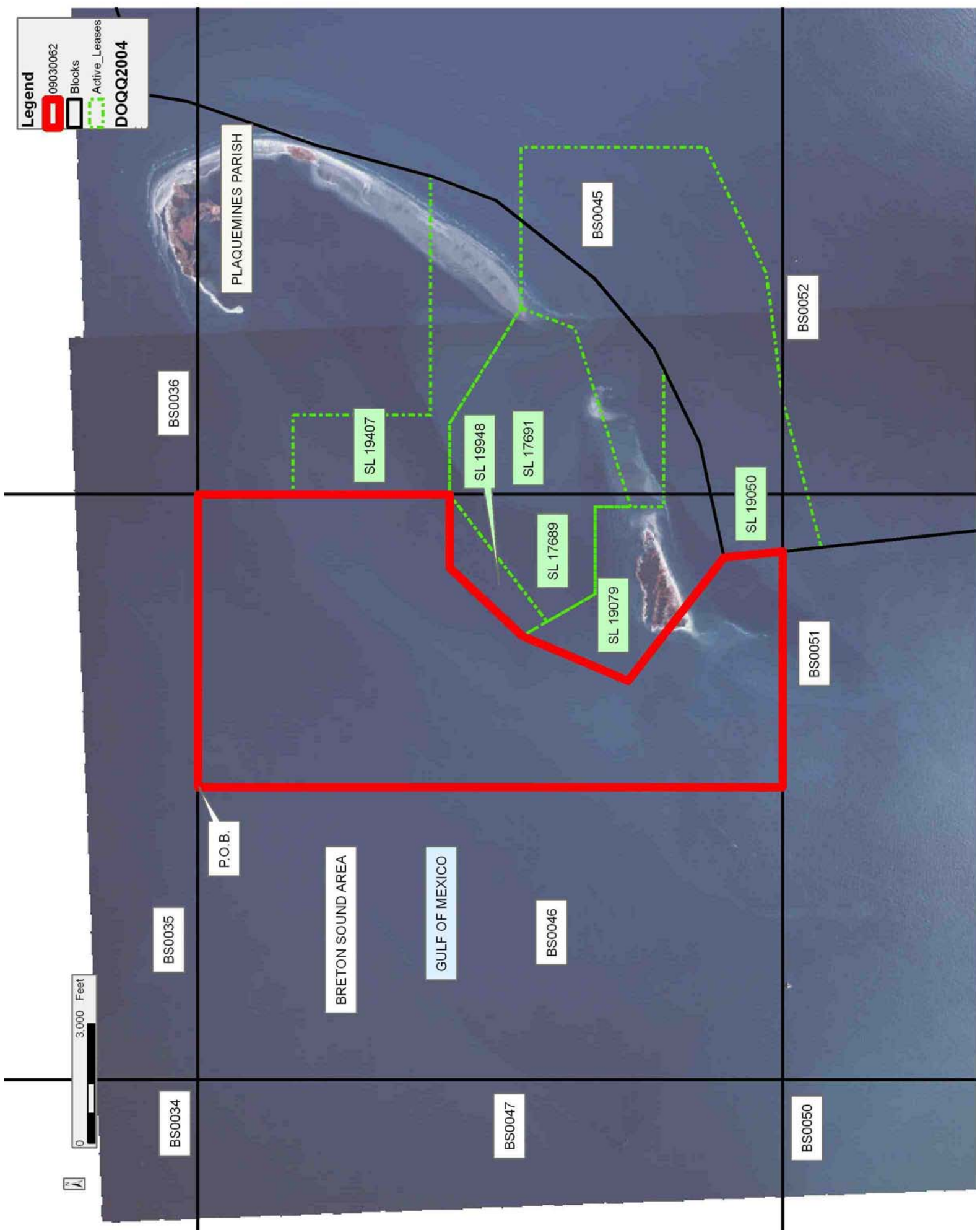
NOTE: The State of Louisiana does hereby reserve, and this lease shall be subject to, the imprescriptible right of surface use in the nature of a servitude in favor of the Department of Natural Resources, including its Offices and Commissions, for the sole purpose of implementing, constructing, servicing and maintaining approved coastal zone management and/or restoration projects. Utilization of any and all rights derived under this lease by the mineral lessee, its agents, successors or assigns, shall not interfere with nor hinder the reasonable surface use by the Department of Natural Resources, its Offices or Commissions, as herein above reserved.

Applicant: HAROLD J. ANDERSON, INC.

Bidder	Cash Payment	Price/Acre	Rental	Oil	Gas	Other

**Legend**

- 09030062
- Blocks
- Active\_Leases
- DOQQ2004



**TRACT 40851 - Portion of Block 51, Breton Sound Area, Plaquemines Parish, Louisiana**

All of the lands now or formerly constituting the beds and bottoms of all water bodies of every nature and description as to which title is vested in the State of Louisiana, together with all islands arising therein and other lands formed by accretion or by reliction, where allowed by law, excepting tax adjudicated lands, and not presently under mineral lease on March 11, 2009, situated in Plaquemines Parish, Louisiana, and more particularly described as follows: Beginning at a point on the North line of Block 51, Breton Sound Area, having Coordinates of X = 2,672,225.00 and Y = 292,830.00; thence East 5,941.42 feet along the North line of said Block 51 to a point on the Louisiana Coastline, as decreed by the Supreme Court of the United States, as determined by a Special Master appointed therein, in litigation styled *United States v. State of Louisiana et al No. 9 Original*, in 1975, having Coordinates of X = 2,678,166.42 and Y = 292,830.00; thence Southeasterly, on a straight line, along said Louisiana Coastline to a point on the East line of said Block 51 having Coordinates of X = 2,679,600.00 and Y = 279,416.19; thence South 1,336.19 feet along the East line of said Block 51 to its Southeast corner, also being the Southeast corner of State Lease No. 17244 having Coordinates of X = 2,679,600.00 and Y = 278,080.00; thence along the boundary of said State Lease No. 17244 the following courses: North 33 degrees 05 minutes 49 seconds West 1,607.88 feet; West 2,053.00 feet and South 1,347.00 feet to its Southwest corner, also being a point on the South line of said Block 51 having Coordinates of X = 2,676,669.00 and Y = 278,080.00; thence West 4,444.00 feet along the South line of said Block 51 to a point having Coordinates of X = 2,672,225.00 and Y = 278,080.00; thence North 5,931.32 feet to a point on the Southern boundary of State Lease No. 16890 having Coordinates of X = 2,672,225.00 and Y = 284,011.32; thence along the boundary of said State Lease No. 16890 the following courses: South 87 degrees 28 minutes 59 seconds East 485.47 feet; North 31 degrees 53 minutes 54 seconds East 2,838.68 feet; North 01 degrees 37 minutes 30 seconds West 1,730.70 feet; West 1,289.52 feet and South 73 degrees 14 minutes 30 seconds West 675.07 feet to a point on its Northern boundary having Coordinates of X = 2,672,225.00 and Y = 287,935.35; thence North 4,894.65 feet to the point of beginning, containing approximately **2,054.86 acres**, all as more particularly outlined on a plat on file in the Office of Mineral Resources, Department of Natural Resources. All bearings, distances and coordinates are based on Louisiana Coordinate System of 1927, (North or South Zone), where applicable.

NOTE: The above description of the Tract nominated for lease has been provided and corrected, where required, exclusively by the nomination party. Any mineral lease selected from this Tract and awarded by the Louisiana State Mineral Board shall be without warranty of any kind, either express, implied, or statutory, including, but not limited to, the implied warranties of merchantability and fitness for a particular purpose. Should the mineral lease awarded by the Louisiana State Mineral Board be subsequently modified, cancelled or abrogated due to the

existence of conflicting leases, operating agreements, private claims or other future obligations or conditions which may affect all or any portion of the leased Tract, it shall not relieve the Lessee of the obligation to pay any bonus due thereon to the Louisiana State Mineral Board, nor shall the Louisiana State Mineral Board be obligated to refund any consideration paid by the Lessor prior to such modification, cancellation, or abrogation, including, but not limited to, bonuses, rentals and royalties.

NOTE: The State of Louisiana does hereby reserve, and this lease shall be subject to, the imprescriptible right of surface use in the nature of a servitude in favor of the Department of Natural Resources, including its Offices and Commissions, for the sole purpose of implementing, constructing, servicing and maintaining approved coastal zone management and/or restoration projects. Utilization of any and all rights derived under this lease by the mineral lessee, its agents, successors or assigns, shall not interfere with nor hinder the reasonable surface use by the Department of Natural Resources, its Offices or Commissions, as herein above reserved.

Applicant: HAROLD J. ANDERSON, INC.

Bidder	Cash Payment	Price/Acre	Rental	Oil	Gas	Other

**Legend**

- 09030067
- Blocks
- Active\_Leases

